

ERRATUM

Open Access



Erratum to: Complete chloroplast genome sequence of MD-2 pineapple and its comparative analysis among nine other plants from the subclass Commelinidae

RM Redwan¹, A. Saidin² and SV Kumar^{1*}

Erratum

After the publication of this work [1], we noticed that an incorrect version of Fig. 2 (Fig. 1 here) was published. The correct version of Fig. 2 has been corrected in the original article and is also included correctly below. The publisher apologizes for any inconvenience caused.

* Correspondence: vijay@ums.edu.my

¹Biotechnology Research Institute, Universiti Malaysia Sabah, Jalan UMS, 88400 Kota Kinabalu, Sabah, Malaysia

Full list of author information is available at the end of the article

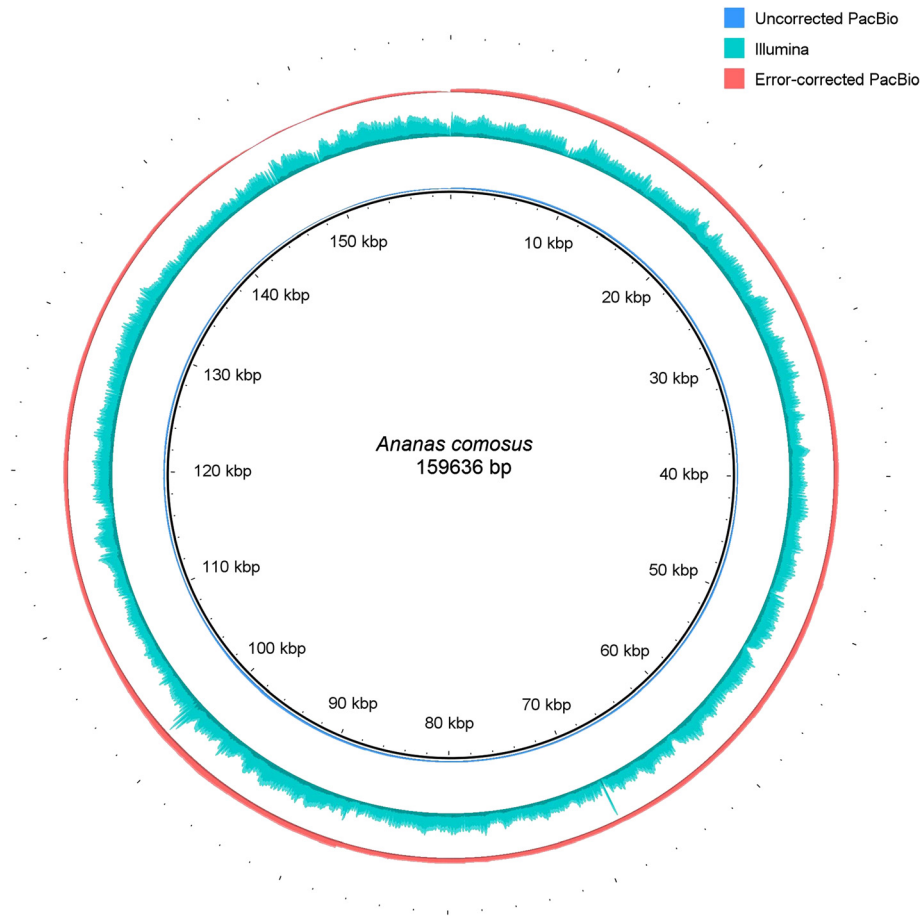


Fig. 1 The coverage profile of the pineapple chloroplast after mapping back the error corrected, uncorrected and the Illumina short reads. Each three rings represented the depth of coverage from mapping back reads used in the assembly of the pineapple chloroplast genome. From the outermost to the innermost, the ring represents the corrected PacBio, the Illumina short reads and uncorrected PacBio mapped to the chloroplast genome of pineapple. The height of each ring is in proportion to the number of reads mapped across the chloroplast genome. Figure was illustrated using BRIG [41]

Author details

¹Biotechnology Research Institute, Universiti Malaysia Sabah, Jalan UMS, 88400 Kota Kinabalu, Sabah, Malaysia. ²Novocraft Technology Sdn. Bhd, Two Square, Seksyen 19, Petaling Jaya, Selangor, Malaysia.

Received: 21 September 2015 Accepted: 21 September 2015

Published online: 18 December 2015

Reference

1. Redwan RM et al. Complete chloroplast genome sequence of MD-2 pineapple and its comparative analysis among nine other plants from the subclass Commelinidae. *J Plant Biol.* 2015;15:196.

**Submit your next manuscript to BioMed Central
and take full advantage of:**

- Convenient online submission
- Thorough peer review
- No space constraints or color figure charges
- Immediate publication on acceptance
- Inclusion in PubMed, CAS, Scopus and Google Scholar
- Research which is freely available for redistribution

Submit your manuscript at
www.biomedcentral.com/submit

