

RESEARCH

Open Access



# Is there a placental microbiota? A critical review and re-analysis of published placental microbiota datasets

Jonathan J. Panzer<sup>1,2</sup> , Roberto Romero<sup>1,3,4,5,6\*</sup> , Jonathan M. Greenberg<sup>1,7</sup>, Andrew D. Winters<sup>1,2</sup>, Jose Galaz<sup>1,7,8</sup>, Nardhy Gomez-Lopez<sup>1,2,7</sup>  and Kevin R. Theis<sup>1,2,7\*</sup> 

## Abstract

The existence of a placental microbiota is debated. The human placenta has historically been considered sterile and microbial colonization was associated with adverse pregnancy outcomes. Yet, recent DNA sequencing investigations reported a microbiota in typical human term placentas. However, this detected microbiota could represent background DNA or delivery-associated contamination. Using fifteen publicly available 16S rRNA gene datasets, existing data were uniformly re-analyzed with DADA2 to maximize comparability. While Amplicon Sequence Variants (ASVs) identified as *Lactobacillus*, a typical vaginal bacterium, were highly abundant and prevalent across studies, this prevalence disappeared after applying likely DNA contaminant removal to placentas from term cesarean deliveries. A six-study sub-analysis targeting the 16S rRNA gene V4 hypervariable region demonstrated that bacterial profiles of placental samples and technical controls share principal bacterial ASVs and that placental samples clustered primarily by study origin and mode of delivery. Contemporary DNA-based evidence does not support the existence of a placental microbiota.

## Importance

Early-gestational microbial influences on human development are unclear. By applying DNA sequencing technologies to placental tissue, bacterial DNA signals were observed, leading some to conclude that a live bacterial placental microbiome exists in typical term pregnancy. However, the low-biomass nature of the proposed microbiome and high sensitivity of current DNA sequencing technologies indicate that the signal may alternatively derive from environmental or delivery-associated bacterial DNA contamination. Here we address these alternatives with a re-analysis of 16S rRNA gene sequencing data from 15 publicly available placental datasets. After identical DADA2 pipeline processing of the raw data, subanalyses were performed to control for mode of delivery and environmental DNA contamination. Both environment and mode of delivery profoundly influenced the bacterial DNA signal from term-delivered placentas. Aside from these contamination-associated signals, consistency was lacking across studies. Thus, placentas delivered at term are unlikely to be the original source of observed bacterial DNA signals.

**Keywords** 16S rRNA gene sequencing, Low microbial biomass sampling, Microbiome, Placenta, Sterile womb

\*Correspondence:

Roberto Romero  
prbchiefstaff@med.wayne.edu  
Kevin R. Theis  
ktheis@med.wayne.edu

Full list of author information is available at the end of the article



© The Author(s) 2023. **Open Access** This article is licensed under a Creative Commons Attribution 4.0 International License, which permits use, sharing, adaptation, distribution and reproduction in any medium or format, as long as you give appropriate credit to the original author(s) and the source, provide a link to the Creative Commons licence, and indicate if changes were made. The images or other third party material in this article are included in the article's Creative Commons licence, unless indicated otherwise in a credit line to the material. If material is not included in the article's Creative Commons licence and your intended use is not permitted by statutory regulation or exceeds the permitted use, you will need to obtain permission directly from the copyright holder. To view a copy of this licence, visit <http://creativecommons.org/licenses/by/4.0/>. The Creative Commons Public Domain Dedication waiver (<http://creativecommons.org/publicdomain/zero/1.0/>) applies to the data made available in this article, unless otherwise stated in a credit line to the data.

## Introduction

The womb has historically been considered sterile throughout typical pregnancy [1–3]; yet, the detection of microorganisms, especially bacteria, in some placentas from complicated pregnancies is an established phenomenon [4–7]. For instance, there are demonstrated associations between bacterial colonization of the placenta and preterm labor [5, 8–15], preterm prelabor rupture of membranes (PPROM) [11, 12], histological chorioamnionitis [8, 14, 16], and clinical chorioamnionitis [12–14, 16]. Therefore, research has largely focused on the presence [9, 17–20] and types of bacteria [21–26] associated with the human placenta in the context of spontaneous preterm birth and other pregnancy complications.

However, in 2014, bacterial DNA-based evidence was presented for a universal low-biomass placental microbiota even among placentas from term pregnancies [27]. Since placental colonization by bacteria suggests that fetal colonization is also feasible, this study revitalized the in utero colonization hypothesis, which maintains that commensal bacteria residing in the placenta and/or amniotic fluid colonize the developing fetus during gestation [3, 28–34]. The in utero colonization hypothesis stands in stark contrast to the traditional sterile womb hypothesis, which posits fetal sterility until colonization at delivery or following rupture of the amniotic membranes [1–3, 35–37, 39–41]. Since publication of this seminal study in 2014, many other studies have similarly utilized DNA sequencing techniques to investigate the existence of a placental microbiota in term pregnancies [28, 29, 34, 36, 37, 39–65]. Yet, the existence of a placental microbiota remains under debate eight years later [66–69].

The debate over the existence of a placental microbiota is fueled by several issues. First, the placenta cannot be readily sampled in utero. Thus, attempts at characterizing a placental microbiota have entailed collection of placental samples following either a vaginal or cesarean delivery. While both delivery methods can introduce bacterial contamination [36, 38, 40, 42, 51, 70], in the form of vaginal and skin bacteria, respectively, vaginal delivery likely exposes the placenta to bacterial contamination to an extent that would overwhelm any weak bacterial DNA signal legitimately present in placental tissue in utero [40, 42, 56]. Furthermore, since bacterial infection is a well-known cause of preterm labor and birth [13, 71–74], infection of the placenta cannot be ruled out as a source of any bacterial DNA signals in preterm placental tissues. Thus, to establish that a placental microbiota exists, it must be documented in placentas from term cesarean deliveries to minimize misinterpretation of potential infection-related or delivery-associated contamination [3, 29, 75].

Second, a lack of robust technical controls has made it difficult to determine if reagent or environmental DNA contamination might be the source of bacterial DNA signals attributed to placentas rather than a resident placental microbiota [27, 29, 46, 53, 54, 57–61, 63–65], given that such a theoretically sparse bacterial community could easily be obfuscated by background DNA contamination in laboratories, kits, and reagents [39, 76–79]. Indeed, several recent studies have shown that the bacterial loads [41] and profiles of placentas from term cesarean deliveries do not exceed or differ from those of technical controls [41, 42]. This issue pertains not only to DNA sequencing of placental tissue, but also to many other internal organs such as the lung [80–82], liver [83], brain [84], or even the blood [85]. Technical controls and sterile collection conditions are therefore essential for the verification of any low-biomass microbiota.

Finally, a lack of consistency in the analytical pipelines used to process the DNA sequence data has resulted in additional debate, including how sequences should be grouped or split into taxonomic units [77, 86, 87]. Specifically, too coarse or too fine a taxonomic resolution could either potentially reveal a shared bacterial DNA signal between placental tissues and technical controls or a signal unique to the placenta, respectively.

Ultimately, if there is a placental microbiota it should exist in a majority of, if not all, placentas from women delivering at term without complications, and there should be some degree of consistency in the bacterial taxa residing in placentas across studies. For example, the human vaginal microbiota worldwide is consistently predominated by various species of *Lactobacillus* and, in a smaller proportion of women, higher diversity bacterial communities exist, which consist of nevertheless predictable genera such as *Prevotella*, *Sneathia*, *Megasphaera*, *Atopobium*, *Mobiluncus*, *Streptococcus*, and *Gardnerella* [88, 89]. Yet, among investigators proposing the existence of a placental microbiota, there are conflicting reports regarding its predominant bacterial members [27–29, 44, 49, 54, 58, 62–65] and, when complementary culture results are available, placental samples are often culture negative or the bacteria recovered are discrepant with the DNA sequencing results [19, 28, 40, 41, 44, 56, 90–95].

Given these current conflicting conclusions regarding the existence of a placental microbiota, here we performed a critical review and re-analysis of fifteen publicly available 16S rRNA gene sequencing datasets from human placental microbiota studies for which sample distinguishing metadata were available [29, 36, 37, 39–44, 50, 53, 57, 96]. In this re-analysis we standardized the analytical process

to enable assessment of taxonomic consistency in placental bacterial profiles across studies conducted by different laboratories across the world (Fig. S1).

Three primary analyses were performed. The first analysis was a comparison of the bacterial profiles of placental samples to technical controls for studies which included at least six controls for background DNA contamination [97] since this environmental contamination could be a source of the purported placental bacterial DNA signal. Ideally, a valid placental microbiota would be expected to exhibit a bacterial DNA signal distinct from that of kit reagents or surrounding laboratory environments. The second analysis was restricted to placentas from term cesarean deliveries so as to avoid potential bacterial contamination of placentas that could occur during vaginal delivery [36, 42, 51, 98]. If there were a placental microbiota, the bacterial DNA signals should be clear and consistent across placentas from term cesarean deliveries. This analysis was therefore performed using data from the six studies for which placental samples could be restricted to those from term cesarean deliveries. The third and final analysis was restricted to studies that targeted the V4 hypervariable region of the 16S rRNA gene to control for any variation which might arise due to variation in targeted 16S rRNA gene hypervariable regions across studies or the DNA sequence processing algorithms used. A valid placental microbiota would be expected to be independent of study identity and mode of delivery.

Collectively, these analyses did not support the presence of a placental microbiota in typical term pregnancies. Observed bacterial signals were products of mode of delivery and background DNA contamination. Although there may be a true, consistent, extremely low biomass bacterial signal beyond the limits of detection by contemporary 16S rRNA gene sequencing, it remains to be demonstrated that the placenta harbors a legitimate bacterial DNA signal or a viable microbiota in typical human pregnancy.

## Results

### Overview of studies included in this re-analysis

Fifteen studies (Fig. 1; Table 1) were included in this re-analysis of investigations of the existence of a placental microbiota. Seven included sequence data from the V4 hypervariable region of the 16S rRNA gene [29, 39, 41, 43, 44, 50, 96], allowing for direct comparisons of sequence data across six of those studies [29, 39, 41, 44, 50, 96]; one study could not be included in the direct comparison due to short read lengths of sequences in the publicly available dataset [43]. Three of the remaining studies included sequence data from the V1-V2 16S

rRNA gene hypervariable region [36–38] two studies sequenced the V6-V8 region [40, 53], and one study each sequenced the V3-V4 [58], V4-V5 [57], and V5-V7 [42] regions. All fifteen studies included at least one placental sample from a term cesarean delivery, but only eight included more than one term cesarean delivered placenta and sufficient background technical controls [i.e.,  $N=6$  [97]] to infer likely DNA contaminants using the R package DECONTAM [36, 39–43, 50, 96] (Fig. 2). Two of these studies lacked available metadata to discriminate placental samples by gestational age at delivery [42, 50], leaving a total of six studies [36, 39–41, 43, 96] for assessing uniformity of bacterial profiles among term cesarean delivered placentas across studies while accounting for potential background DNA contamination (Fig. 2). Notably, five of these six studies concluded that there was no evidence for a placental microbiota in uncomplicated term pregnancies [36, 39–41, 96] (Fig. 2). In contrast, the four studies which did not include sequence data from background technical controls concluded that a placental microbiota does exist [29, 53, 57, 58] (Fig. 2).

### *Lactobacillus* ASVs are the most consistently identified ASVs across placental microbiota studies

After processing the raw 16S rRNA gene sequence data from placental samples from all 15 studies through the same DADA2 analytical pipeline, the most prominent bacterial ASVs, as defined by mean relative abundance, across studies were classified as *Lactobacillus*, *Escherichia/Shigella*, *Staphylococcus*, *Streptococcus*, and *Pseudomonas*. *Lactobacillus* ASVs were among the top five ranked ASVs in eight of the 15 studies [37, 39, 42, 50, 53, 57, 96], making *Lactobacillus* the most consistently detected genus in placental samples across studies with publicly available 16S rRNA gene sequencing data.

The detection of *Lactobacillus* ASVs was not exclusive to the targeted sequencing of specifically any one 16S rRNA gene hypervariable region; *Lactobacillus* ASVs were found among the top five ASVs in the dataset of at least one study targeting the V1-V2, V4, V4-V5, V5-V7, or V6-V8 hypervariable region(s) of the 16S rRNA gene. Other genera which were not 16S rRNA gene hypervariable region specific and were detected in the top five ranked ASVs in more than one dataset, but in no more than four, included *Staphylococcus* [40, 44, 54, 96], *Streptococcus* [38, 40, 42], and *Pseudomonas* [50, 54, 57]. In contrast, *Escherichia/Shigella* ASVs were exclusively among the top five ranked ASVs in datasets of studies that targeted the V4 hypervariable region of the 16S rRNA gene for sequencing (3/7 such datasets) [29, 39, 96].

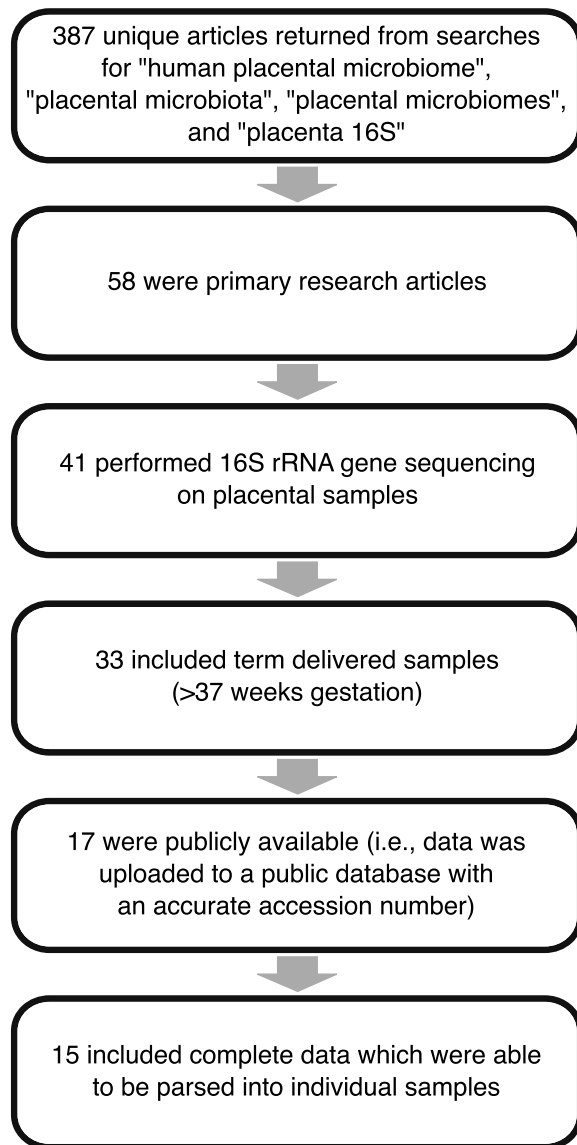
**Table 1** Overview of placental microbiota studies that were based on 16S rRNA gene sequencing data and that were included in this critical review and re-analysis. The presented study characteristics include the: name of the first author(s); geographical location at which subjects were sampled; specific 16S rRNA gene hypervariable region that was targeted for sequencing; number of placentas sampled by mode of delivery and whether delivery was before (i.e., preterm) or after (i.e., term) 37 weeks; number of technical controls included to address potential background DNA contamination; and whether we were able to categorize placental samples based on mode of delivery, gestational age at delivery (i.e., before or after 37 weeks), and whether DECONTAM analysis could be performed to identify background DNA contaminants (i.e.,  $N \geq 6$  technical controls included in the study) [97]. Square brackets indicate that available sample metadata did not allow for placentas to be grouped by gestational age at delivery.

Study	Geographic Location	16S rRNA gene hypervariable region	Cesarean		Vaginal		Technical Controls		Ability to group by		Ability to run DECONTAM
			Term	Preterm	Term	Preterm	Delivery	Gestational Age			
de Goffau Part <sup>b</sup>	Cambridge, UK	V1-V2	80	0	0	0	47	X	X	X	
Lauder	Philadelphia, PA, USA	V1-V2	1	0	5	0	39	X	X	X	
Leiby	Philadelphia, PA, USA	V1-V2	1	5	19	15	103	X	X	X	
Olomu	Lansing, MI, USA	V4	47 <sup>a</sup>	0	0	0	131	X	X	X	
Parnell	St. Louis, MO, USA	V4	34	0	23	0	21	X	X	X	
Theis <sup>c</sup>	Detroit, MI, USA	V4	29 <sup>a</sup>	0	0	0	43	X	X	X	
Theis, Winters	Detroit, MI, USA	V4	28	14	21	6	12	X	X	X	
Sterpu	Stockholm, Sweden	V6-V8	50 <sup>a</sup>	0	26	0	6	X	X	X	
Dinsdale	South Hedland, Australia	V4	[19]			[31]	8	X		X	
Tang	Shanghai, China	V3-V4	15 <sup>a</sup>	0	0	0	0	X	X		
Liu	Kunming, China	V4-V5	42	0	36	0	0	X	X		
Gomez-Arango	Brisbane, Australia	V6-V8	16 <sup>a</sup>	0	20	0	0	X	X		
Young	Durham, NC, USA	V4	5 <sup>a</sup>	5	0	0	0	X	X		
Leon	London, England, UK	V5-V7	[136]			[120]	21			X	
Seferovic	Houston, TX, USA	V4	26	8	0	18	2				

<sup>a</sup> Indicates that placental samples were delivered without labor

<sup>b</sup> Analyzed data are from the Cohort 1 component of the study

<sup>c</sup> Analyzed data are from the nested PCR component of the study

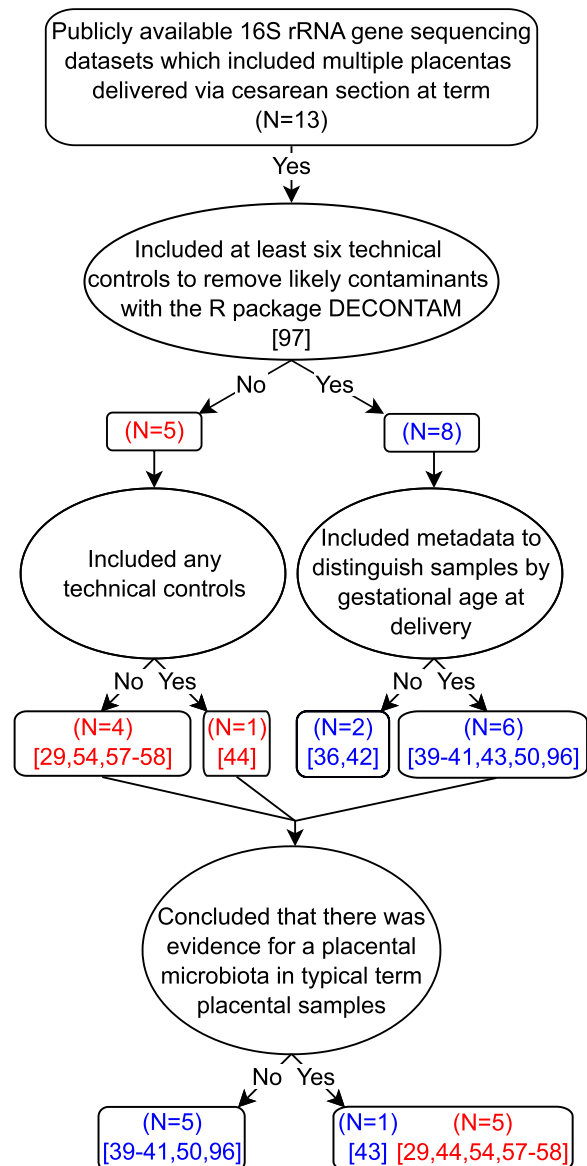


**Fig. 1** Study inclusion flowchart

Four searches were performed on PubMed to identify studies for inclusion in the re-analysis. Filtering criteria were: primary research article, 16S rRNA gene sequencing data, placentas obtained from term deliveries, sequencing data accessible with published accession number, and sufficient metadata available to parse sequencing data into individual samples.

**Lactobacillus ASVs in placental samples are typically contaminants introduced through vaginal delivery and/or background DNA contamination**

While it can be difficult to identify the definitive source of a particular ASV in placental samples, the difference in *Lactobacillus* predominance between vaginally delivered placentas and cesarean delivered placentas is striking. *Lactobacillus* ASVs were among the top five ASVs



**Fig. 2** Conclusions of thirteen studies evaluating the existence of a placental microbiota, which included data from multiple placentas delivered via cesarean section at term

The studies are principally separated and contrasted depending upon whether they included technical controls to account for potential background DNA contamination.

in five of seven datasets which included placentas from vaginal deliveries before running the R package DECONTAM, and three of four datasets which included placentas from vaginal deliveries after running DECONTAM. Consider, for instance, the Lauder et al. [37] and Leiby et al. [38] datasets. While all samples in the Lauder et al. dataset [37] had *Lactobacillus* ASVs, the percentage of *Lactobacillus* normalized reads in cesarean delivered

**Table 2** Summary of prominent bacterial ASVs in term cesarean delivered placental samples before and after removal of background DNA contaminants using the R package DECONTAM. The top five ASVs as determined by mean relative abundance across placental samples after DADA2 processing are provided for studies which could be restricted to term cesarean delivered placental samples. Asterisks indicate ASV sequence genus level classifications which were assigned by NCBI BLAST with the highest percent identity in excess of 95%. The Liu et al. [57] dataset could not be assessed post-DECONTAM since no technical controls were included in the study.

Study	16S rRNA gene hypervariable region	ASV1	ASV2	ASV3	ASV4	ASV5
<b>Before DECONTAM</b>						
Olomu	V4	<i>Escherichia/Shigella</i>	<b>Lactobacillus</b>	<b>Lactobacillus</b>	<i>Finegoldia</i>	<i>Fenollaria</i>
Parnell	V4	<i>Leptospira</i>	<i>Leptospira</i>	<i>Leptospira</i>	<i>Cutibacterium</i>	<i>Leptospira</i>
Theis	V4	<i>Achromobacter</i>	<i>Delftia</i>	<i>Phyllobacterium</i>	<i>Clostridium sensu stricto 5</i>	<i>Stenotrophomonas</i>
Theis, Winters	V4	<b>Lactobacillus</b>	<i>Staphylococcus</i>	<i>Escherichia/Shigella</i>	<i>Serratia*</i>	<i>Streptococcus</i>
Liu	V4-V5	<i>Pseudomonas</i>	<i>Pantoea*</i>	<i>Pantoea*</i>	<b>Lactobacillus</b>	<i>Pantoea*</i>
Sterpu	V6-V8	<i>Cutibacterium</i>	<i>Staphylococcus</i>	<i>Streptococcus</i>	<i>Streptococcus</i>	<i>Streptococcus</i>
<b>After DECONTAM</b>						
Olomu	V4	<i>Fenollaria</i>	<i>Acinetobacter</i>	<b>Lactobacillus</b>	<i>Campylobacter</i>	<i>Peptoniphilus</i>
Parnell	V4	<i>Leptospira</i>	<i>Leptospira</i>	<i>Leptospira</i>	<i>Cutibacterium</i>	<i>Leptospira</i>
Theis	V4	<i>Achromobacter</i>	<i>Alcaligenaceae</i>	<i>Escherichia/Shigella</i>	<i>Achromobacter</i>	<i>Alcaligenaceae</i>
Theis, Winters	V4	<i>Corynebacterium</i>	<i>Serratia*</i>	<i>Mycoplasma</i>	<i>Corynebacterium</i>	<i>Fusobacterium</i>
Sterpu	V6-V8	<i>Staphylococcus</i>	<i>Gardnerella</i>	<i>Staphylococcus</i>	<i>Staphylococcus</i>	<i>Streptococcus</i>

ASV1–5 are rank designations based on percent relative abundance

*Lactobacillus* ASVs are bolded to emphasize prevalence and lack thereof after likely-contaminant removal

placental samples was 23% compared to 46% in vaginally delivered placental samples. In the Leiby et al. [38] dataset only four of 23 (17%) cesarean delivered placentas had any *Lactobacillus* ASVs, and they made up only 2% of the total reads from their respective samples. In contrast, 35 of 116 (30%) placentas from vaginal deliveries had *Lactobacillus* ASVs, and they made up 22% of the total reads from those 35 samples.

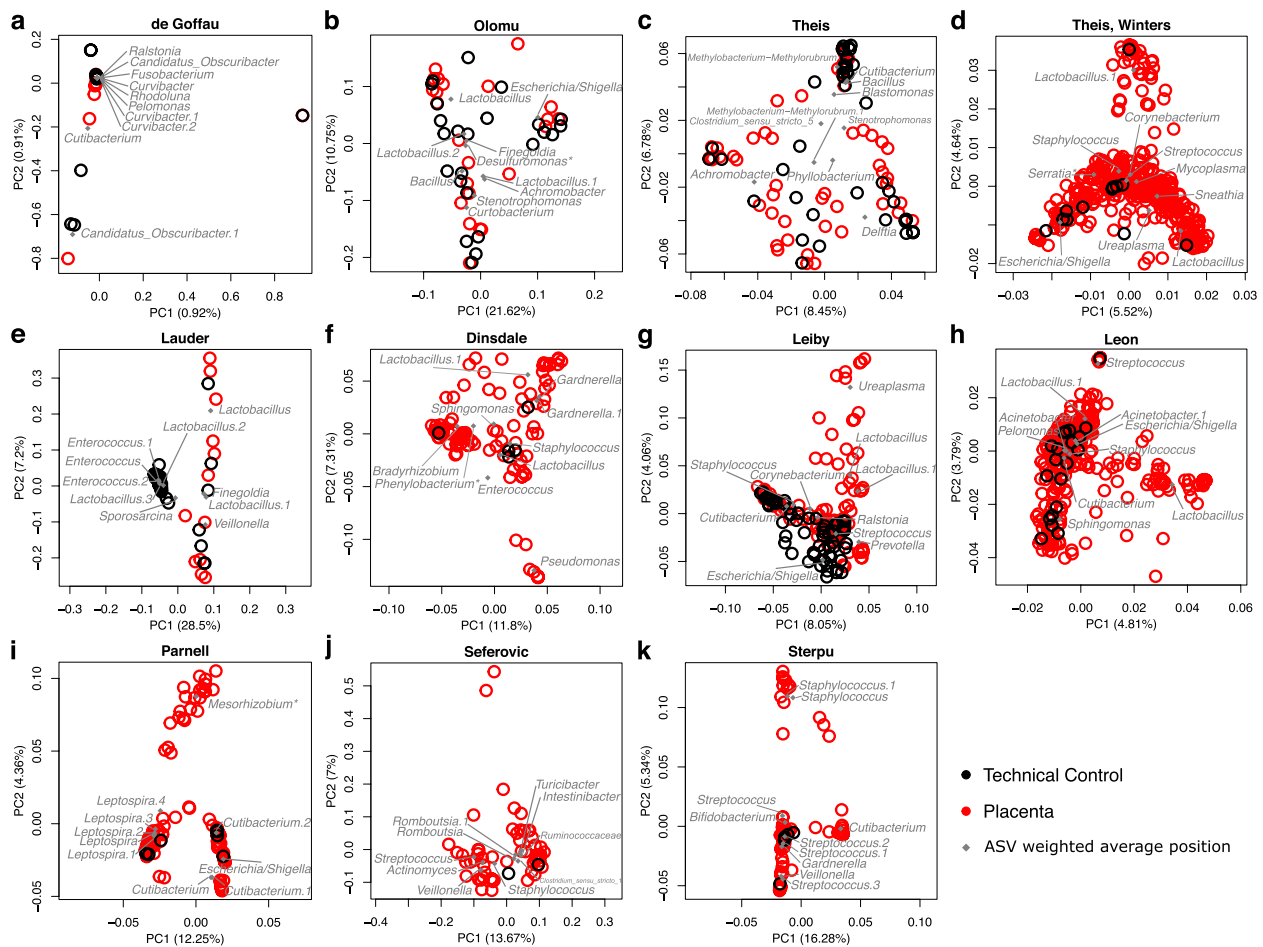
*Lactobacillus* ASVs were among the top five ranked ASVs in three [39, 57, 96] of the six datasets which could be restricted to placental samples from cesarean term deliveries (Table 2). Yet, after removing potential background DNA contaminants using DECONTAM, only the Olomu et al. [39] dataset still retained a *Lactobacillus* ASV in the top five ranked ASVs (Table 2). Notably, the authors of that study identified the origin of *Lactobacillus* in placental samples as well-to-well DNA contamination from vaginal to placental samples during 16S rRNA gene sequence library generation.

Furthermore, *Lactobacillus* ASVs were also more prominent in samples of placental tissues of maternal origin, such as the decidua or basal plate, than placental tissues of fetal origin, such as the amnion, chorion, or villous tree. After separating placental sample data from non-labor term cesarean deliveries by fetal and maternal origin, with the exception of the Olomu et al. [39] study, *Lactobacillus* ASVs were absent from placental samples of fetal origin (Table S1). In contrast, among samples

of maternal origin from the Theis, Winters et al. dataset [96], *Lactobacillus* was the most relatively abundant ASV even after removal of likely DNA contaminants with DECONTAM, and in the Lauder et al. [37] study, only the maternal side of the single cesarean delivered placenta had a high predominance of *Lactobacillus*.

#### The bacterial ASV profiles of placental samples and background technical controls cluster based on study origin

Beta diversity between placental samples and technical controls was visualized through Principal Coordinates Analysis (PCoA) for each study in the re-analysis to assess the extent of influence of background DNA contamination on the bacterial ASV profiles of placental samples (Fig. 3). A majority of placental samples cluster with their respective technical controls across the studies. Specifically, in five of eleven studies, technical controls covered the entire bacterial profile spectrum of placental samples (Fig. 3A-E), and in the remaining six studies which included technical controls, the bacterial profiles of most placental samples largely clustered with those of technical controls (Fig. 3F-K). Placental samples in the latter group which did not cluster with technical controls were characterized by a predominance of *Lactobacillus* (Fig. 3F-H), *Cutibacterium* (Fig. 3I,K), *Gardnerella* (Fig. 3F), *Pseudomonas* (Fig. 3F), *Ureaplasma*



**Fig. 3** Principal Coordinates Analyses of the beta diversity of bacterial DNA profiles between placental samples and technical controls in published placental microbiota studies

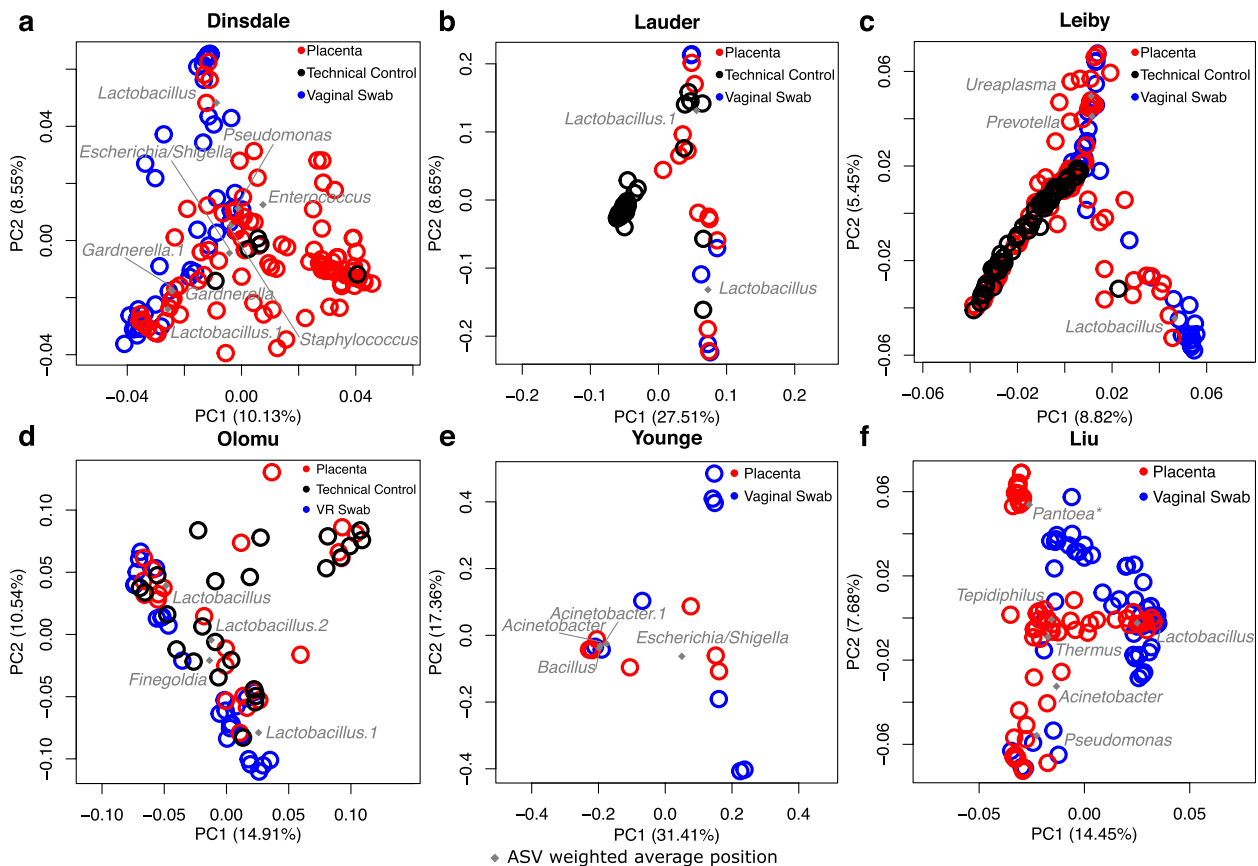
Studies were included if technical controls were sequenced and made publicly available to account for background DNA contamination. Beta diversity between placental (red open circles) and technical control (black open circles) samples is illustrated by study in PCoA plots based on the Bray-Curtis dissimilarity index. Genus level classifications of the top ten ASVs in placental samples and technical controls by total reads are plotted at their weighted average positions (grey diamonds). Asterisks indicate ASV sequence genus level classifications which were assigned by NCBI BLAST with the highest percent identity in excess of 95%.

(Fig. 3G), *Mesorhizobium* (Fig. 3I), *Prevotella* (Fig. 3J), *Actinomyces* (Fig. 3J), *Streptococcus* (Fig. 3J), *Veillonella* (Fig. 3J), and *Staphylococcus* (Fig. 3K). Notably, the bacterial profiles of most placental samples from term cesarean deliveries were not significantly different from those of technical controls in either dispersion or structure (Table S2). In cases where the structure of the bacterial profiles differed between placental samples and technical controls, but the dispersion of the bacterial profiles did not, it was only the bacterial profiles of the exterior surfaces of the placenta which differed from those of controls. In these cases, the bacterial profiles of the exterior surfaces of placental samples were characterized by *Cupriavidus*, *Serratia*, *Corynebacterium*, and

*Staphylococcus* (Table S2), the latter two of which are well-known commensal bacteria of the human skin [99].

#### The bacterial ASV profiles of vaginally delivered placental samples also cluster with their respective vaginal samples across studies

Six studies [29, 37, 39, 50, 57] in the re-analysis included vaginal or vaginal-rectal swab samples as a complement to placental samples; four of these studies also included technical controls [37, 39, 50]. While most technical controls did not cluster with vaginal samples, placental samples typically clustered with vaginal samples and/or technical controls (Fig. 4A-D), or if technical controls were not included in the study, with vaginal samples



**Fig. 4** Principal Coordinates Analyses of the beta diversity of the bacterial DNA profiles of placental and vaginal/vaginal-rectal samples in placental microbiota studies

Prior published studies were included if vaginal or vaginal-rectal samples were sequenced and made publicly available alongside placental samples. The top ten ASVs shared between placental samples and technical controls, and the top ten ASVs in vaginal samples are plotted at their weighted average positions in the ordination space (grey diamonds) and their genus level classifications are noted. Agglomerated genus level classifications were plotted for the Liu dataset instead of ASVs since no ASVs were greater than 1% mean relative abundance across placental samples. Asterisks indicate ASV sequence genus level classifications which were assigned by NCBI BLAST with the highest percent identity in excess of 95%.

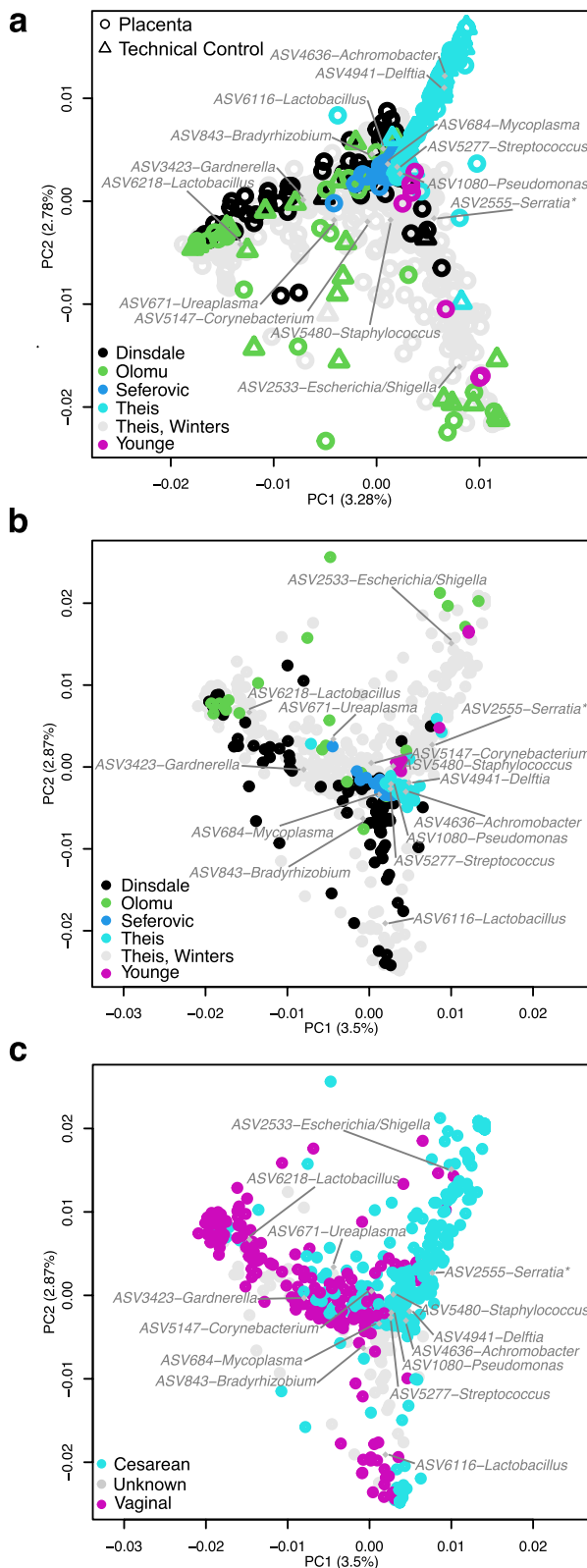
(Fig. 4E-F). Notably, nine *Lactobacillus* ASVs were shared between the top ranked ASVs of placental and vaginal swab samples across five studies [37, 39, 50, 57] (Fig. 4).

#### Placental and technical control samples co-cluster by study and placental samples additionally cluster by mode of delivery

In order to fully utilize the capacity for ASVs to be directly compared across placental microbiota studies, taxonomy and ASV count tables were merged based on the exact ASV sequence data for six [29, 39, 41, 44, 50, 96] of seven studies [29, 39, 41, 43, 44, 96] which sequenced the V4 hypervariable region of the 16S rRNA gene using the PCR primers 515F and 805R. Principal Coordinates Analysis illustrated that placental and technical control samples formed distinct clusters based on study origin (Fig. 5A; NPMANOVA using

Bray-Curtis; placental samples:  $F=16.0$ ,  $P=0.001$ ; technical controls:  $F=4.64$ ,  $P=0.001$ ). The only exception was the Theis, Winters et al. dataset [96], which encompassed the bacterial profiles of placental samples from the other studies. This was likely due to the inclusion of samples in Theis, Winters et al. [96] from multiple regions of the placenta (i.e., amnion, amnion-chorion interface, subchorion, villous tree, and basal plate) as well as placentas from term and preterm vaginal and cesarean deliveries (Fig. 5A). When stratifying by study and thereby taking study origin into account, placental and technical control samples did not exhibit distinct bacterial DNA profiles (Fig. 5A; NPMANOVA:  $n=775$ ,  $F=6.66$ ;  $P=0.512$ ). When technical controls were excluded from the PCoA, discrete clustering of placental samples by study origin was still apparent (Fig. 5B). Furthermore, the bacterial DNA profiles of placental samples were





**Fig. 5** Placental and technical control samples cluster by study origin, mode of delivery, and gestational age at delivery

A) Beta diversity between placental (open circles) and technical control samples (open triangles) from studies which sequenced the V4 hypervariable region of the 16S rRNA gene is visualized through principal coordinate analysis (PCoA) based on the Bray-Curtis dissimilarity index. B) Beta diversity of placental samples without technical control samples from each study. C) Placental samples from the same six studies were characterized by mode of delivery and gestational age at delivery. Weighted average positions of ASVs greater than 1% were plotted as grey diamonds and labelled with genus level classifications. Asterisks indicate ASV sequence genus level classifications which were assigned by NCBI BLAST with the highest percent identity in excess of 95%.

clearly affected by mode of delivery across studies (Fig. 5C; NPMANOVA:  $n=690$ ,  $F=23.9$ ,  $P=0.001$ ). Unsurprisingly, common vaginal bacteria such as *Lactobacillus*, *Ureaplasma*, and *Gardnerella* were predominant in the profiles of placental samples from vaginal deliveries (Fig. 5C).

**Bacterial profiles of placental and technical control samples characterized using the V4 hypervariable region of the 16S rRNA gene share prominent ASVs**

While placental samples from each study exhibited characteristic patterns of predominant ASVs, some ASVs such as ASV2533-*Escherichia/Shigella*, ASV6218-*Lactobacillus*, and ASV6216-*Lactobacillus* were predominant in the datasets of several studies (Fig. 6A-B, E). However, across studies, nearly every ASV that was consistently predominant in the bacterial DNA profiles of placental samples, was also consistently predominant in the profiles of the technical control samples from the same dataset (Fig. 6). For instance, in two studies, all ASVs with a mean relative abundance greater than 1% in placental samples were also greater than 2% mean relative abundance in technical control samples (Fig. 6B-C). In a third study, all ASVs other than ASV5229-*Cutibacterium* were also greater than 2% mean relative abundance across technical control samples (Fig. 6D). These data collectively indicate that prominent placental ASVs were likely derived from background DNA contamination captured by the technical control samples.

**Discussion**

**Principal findings of the study**

In this re-analysis of fifteen placental microbiota studies, of the ASVs which were ranked in the top five ASVs for relative abundance in any one study, *Lactobacillus* ASVs were clearly the most prevalent across studies. Yet, *Lactobacillus* ASV prevalence was explained by background DNA contamination, contamination from the birth canal

during vaginal delivery, or well-to-well contamination from vaginal samples during the sequence library build process. Overall, the bacterial DNA profiles of placental samples were highly similar to those of technical controls in their respective studies. Indeed, a secondary analysis of the six studies which targeted the V4 hypervariable region of the 16S rRNA gene for sequencing, showed that the bacterial DNA signal of both placental and technical control samples clustered by study of origin rather than by sample type. In addition, the top two ASVs in placental samples from each of the six studies in the secondary analysis were also the top ranked ASVs in technical controls from the corresponding study. Considered in isolation, placental samples clustered by mode of delivery, suggesting that the process of delivery greatly affected the bacterial DNA profiles of placentas. Therefore, placental samples included in this re-analysis do not provide evidence of a consistent bacterial DNA signal in typical term pregnancy independent of mode of delivery. Instead, the modest consistency in bacterial DNA signals identified across studies was associated with general background DNA contamination or contamination introduced during vaginal delivery.

#### The findings of this study in the context of prior reports

Currently, the extent of bacterial presence within the placenta is under debate. There have been numerous reviews, commentaries, and editorials, which have sought to synthesize and resolve conflicting results regarding the existence of a placental microbiota [3, 30, 32, 33, 66–68, 77, 100–144]. Although there has been disagreement about the existence of a placental microbiota in typical human pregnancy, there is a consensus that any given body site, including the placenta, can be at least transiently infected by microorganisms. Several reviews have emphasized that microorganisms in placental tissue would not be able to survive for long durations given the structure of the placenta and the immunobiological response of the host [3, 110]. In contrast, some have proposed that microorganisms could survive intracellularly within the basal plate of the placenta and thus effectively evade the host immune system [68, 145]. Many reviews addressing prior microbiota datasets have been challenged to draw conclusions given the multiple confounding factors which could significantly influence results: the specific 16S rRNA gene hypervariable region targeted for sequencing, brand and lot number of the DNA extraction kits, gestational age at

delivery and sampling, mode of delivery of the placenta, inadequate metadata for deposited sequence data, and a general lack of technical controls to account for background DNA contamination. Regardless, many have viewed the current evidence for placental and/or in utero colonization as theoretically tenuous given the existence of germ-free mammals [146, 147] and the strong potential for background bacterial DNA to influence DNA sequencing surveys of low microbial biomass samples [36, 37, 39–41, 91, 112]. Finally, similar to the results presented here in this re-analysis, the prevalence of *Lactobacillus* across placental samples in prior studies has been acknowledged, yet so too has been the high variability in the bacterial taxa reported within placental tissues across studies. Indeed, variability is high even across studies of similar cohorts from the same research groups [27, 41, 44, 63–65, 96].

#### Mode of delivery must be taken into account when investigating the existence and structure of a placental bacterial DNA signal

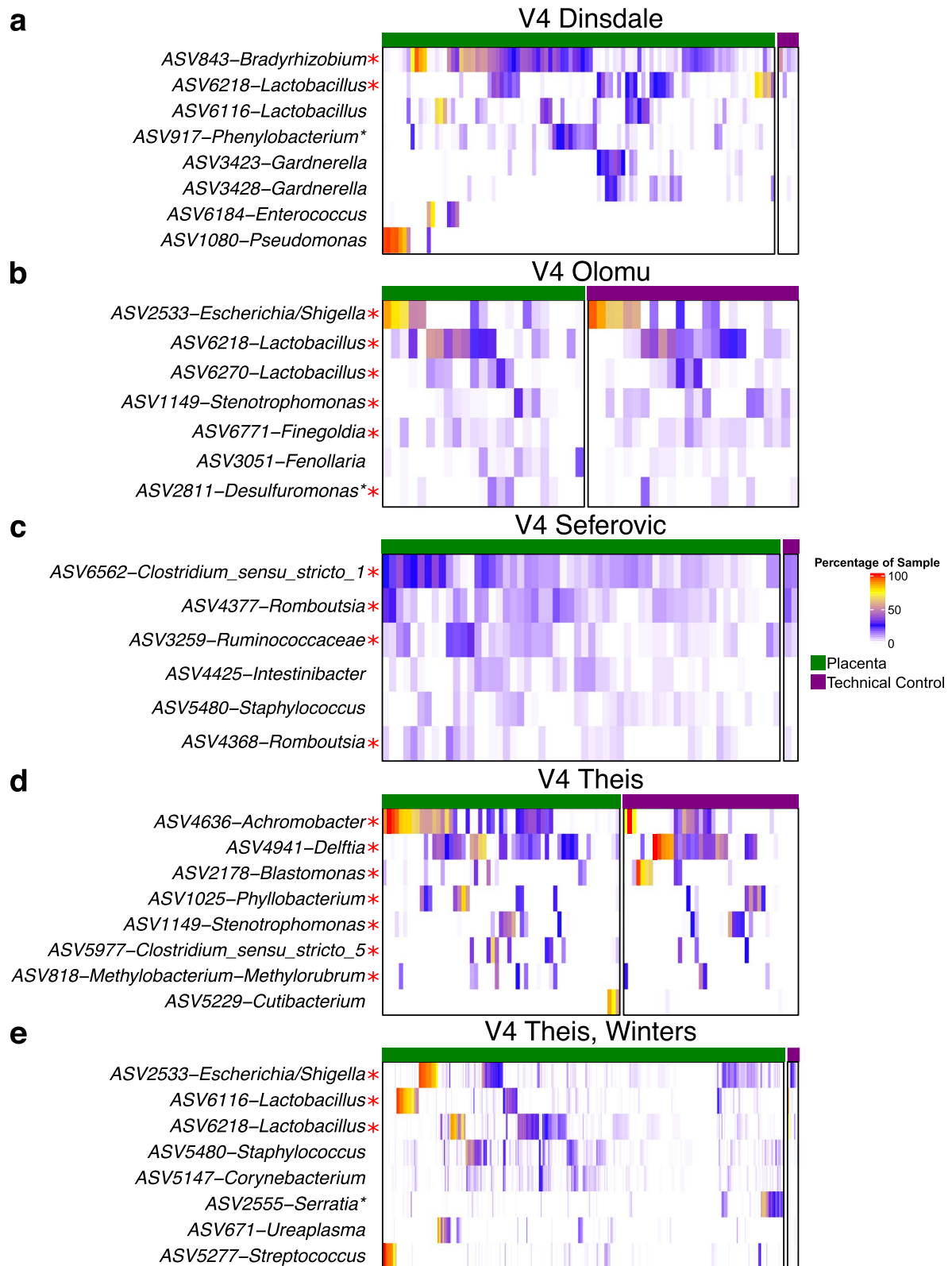
Eight studies [27, 38, 43, 44, 52, 54, 57, 59] concluded that the bacterial DNA signals in placentas from cesarean deliveries were not significantly different from those in placentas delivered vaginally. Yet, five other studies [36, 42, 51, 96, 98] have reported that the bacterial DNA signals in placentas from vaginal and cesarean deliveries significantly differ. The latter studies have reported increased prevalence and relative abundance of *Lactobacillus* and other vaginally associated taxa in placentas from vaginal deliveries. Additionally, even the rupture of membranes, a prerequisite for labor and vaginal delivery, provides microorganisms access to the amniotic cavity [148] and thus the placenta, with prolonged access leading to microbial invasion and infection [149, 150]. Notably, bacterial culture of placentas from vaginal deliveries have significantly higher positivity rates [18, 96], higher total colony counts [40], and a higher prevalence of bacterial colonies from *Lactobacillus* and *Gardnerella*, both of which are typical residents of the human vagina [88]. In contrast, placentas from cesarean deliveries consistently yield bacteria which typically predominate on the skin, such as *Propionibacterium*, *Staphylococcus*, and *Streptococcus* [40, 99].

Importantly, through robust analysis of the entire bacterial DNA signal from hundreds of placental samples, this re-analysis clearly highlights the influence of mode

(See figure on next page.)

**Fig. 6** Heatmaps of the bacterial DNA profiles of placental and technical control samples from studies which sequenced the V4 hypervariable region of the 16S rRNA gene demonstrating a high degree of overlap between these two sample types

ASVs are listed by study if they had a mean relative abundance greater than 1% across placental samples (green bar). Red asterisks indicate ASVs which had a mean relative abundance greater than 2% across all technical control samples (purple bar) from that study. Regular asterisks indicate ASV sequence genus level classifications which were assigned by NCBI BLAST with the highest percent identity in excess of 95%.



**Fig. 6** (See legend on previous page.)

of delivery on the bacterial DNA signal from placental samples by demonstrating mode of delivery-associated clustering across six studies. Furthermore, it is apparent that removing the exterior layers (i.e., amnion, chorion, and basal plate) of a placenta delivered vaginally is not sufficient to eliminate delivery associated DNA contamination of the sample since the diversity and structure of bacterial DNA profiles from the inner layers (i.e., subchorion, villous tree) of the placenta differed significantly between cesarean and vaginal deliveries. Evidence in the literature combined with this re-analysis warrants careful consideration of mode of delivery and even time since rupture of membranes [52, 149, 150] when investigating the bacterial DNA signal from placental samples.

#### **Background bacterial DNA limits analysis of bacterial 16S rRNA gene signal from the placenta**

Theoretically, a low bacterial biomass community is detectable using 16S rRNA gene sequencing when its concentration is at least 10–100 CFU/mL [151]. However, discerning a true tissue-derived low bacterial DNA signal from other potential sources is exceedingly difficult. This re-analysis, along with eight other studies [36, 37, 39–41, 91, 96], found that placental samples and technical controls share highly abundant bacterial taxa when 16S rRNA gene sequencing is used. Since technical controls represent the environment and reagents to which the placenta is exposed post-delivery, it follows that a majority of the bacterial DNA signal from placental samples is also acquired from those environments and reagents. While a placental tissue limit of bacterial detection through DNA sequencing is yet to be determined, other low-bacterial-biomass sample types such as oral rinse, bronchoalveolar lavage fluid, and exhaled breath condensate were predominated by stochastic noise below  $10^4$  16S rRNA gene copies per sample [152]. Even the bacterial DNA signal from a pure culture of *Salmonella bongori* serially diluted to a final concentration of  $10^3$  CFU/mL was mostly contamination [78]. If these limits are comparable to those in placental tissue, then stochastic noise and background DNA contamination would predominate the bacterial DNA signal from placental tissue leaving any true DNA signal well beyond the detection limits of 16S rRNA gene sequencing. Therefore, it follows that 16S rRNA gene sequencing by itself without additional verification is inadequate to make a clear assessment of the existence of a placental microbiota.

#### **Prior reports of 16S rRNA gene sequencing on placentas from term pregnancies**

With the prior considerations in mind, out of the 40 studies which performed 16S rRNA gene sequencing on placental samples, 32 included at least some term deliveries. However, only 16 focused exclusively on placentas from

term deliveries [28, 37, 39–41, 43, 49, 53, 54, 56–58, 62–65]. Additionally, only nine of these studies focused exclusively on placentas from cesarean deliveries [28, 39, 41, 49, 56, 58, 62, 64, 65] and only three included technical controls and their DNA sequencing data thus accounting for gestational age, mode of delivery, and background DNA contamination [39, 41, 49]. Two of three concluded that there was no evidence for a placental microbiota in the context of term cesarean delivery [39, 41].

Many studies have reported evidence for a low biomass placental microbiota [27, 29, 30, 43–47, 49, 50, 52–54, 57, 58, 60, 61, 63–65, 92, 93, 145, 153] but only nine of these studies exclusively sampled placentas from term deliveries [43, 49, 53, 54, 57, 58, 63–65]. Predominant bacterial taxa reported in these studies included *Pseudomonas* [54, 64, 65], *Lactobacillus* [49, 54], Bacteroidales [64], *Enterococcus* [63], *Mesorhizobium* [43], *Prevotella* [58], unclassified Proteobacteria [57], *Ralstonia* [43], and *Streptococcus* [54]. Two studies from this term delivery subset, which sampled multiple regions of the placenta, observed gradients of *Lactobacillus* relative abundance across levels of the placenta, but in opposite directions [43, 49].

In contrast, five studies did not find evidence for a microbiota in placentas from term deliveries since neither the placental bacterial DNA signal from 16S rRNA gene sequencing [37, 39–41] nor the bacterial load as determined by quantitative real-time PCR [37, 39–41, 56] were significantly different from technical controls. One study even noted that no operational taxonomic units greater than 1% relative abundance in placental samples, were less than 1% in technical control samples, emphasizing the overlap between the two sample types [37]. Three of these studies [40, 41, 56] also attempted to culture viable bacteria from placental tissue, but were rarely successful. In cases where culture was successful, viable bacteria often conflicted with the DNA sequencing results suggesting that cultured bacteria were likely contaminants [40, 41].

#### **Clinical significance**

##### ***Non-viable or viable bacterial DNA could feasibly be filtered from maternal blood by the placenta leading to a placental bacterial DNA signal***

The placenta is a transient internal organ with functions that include promotion of gas exchange, nutrient and waste transport, maternal immunoglobulin transport, and secretion of hormones critical for fetal growth and development [154]. These exchanges and transfers occur due to diffusion gradients between fetal and maternal blood, the latter of which bathes the chorionic villi in the intervillous space of the placenta [108]. This maternal blood, which cannot be fully drained from the placenta before biopsy or sampling, can undoubtedly contain bacterial particles or even the remnants of a low-grade

bacterial infection [56, 112, 155]. Because of its structure, the placenta functions as a filter and retains these particles or bacteria, dead or alive. A bacterial DNA signal due to this filtering process would be extremely weak and transient. In addition, the bacterial taxa identified would be highly variable since they do not correspond to a specific niche, which is consistent with the findings of this re-analysis.

#### **Infection is a potential source for the placental bacterial DNA signal**

Instead of in utero colonization, it is more likely that the bacterial DNA signal coming from a subset of placental samples is caused by infection. It is curious to note that specific bacteria are associated with stronger bacterial DNA signals and inflammation in placental tissue resulting in adverse pregnancy outcomes including preterm birth and/or preterm prelabor rupture of membranes (PPROM) [52, 55, 98]. Spontaneous preterm birth has been shown to increase bacterial load [55] and the relative abundances of several taxa in placental samples including but not limited to *Ureaplasma* [26, 36, 38, 42, 51, 52, 156, 157], *Fusobacterium* [51, 52], *Mycoplasma* [42, 51, 52], *Streptococcus* [36, 51], *Burkholderia* [27], *Escherichia/Shigella* [55], *Gardnerella* [51], *Gemella* [52], and *Pseudomonas* [50]. *Ureaplasma urealyticum*, *Mycoplasma hominis*, *Bacteroides* spp., *Gardnerella* spp., *Mobiluncus* spp., various enterococci, and *Streptococcus agalactiae* (also known as Group B Streptococcus or GBS) are frequently associated with histologic acute chorioamnionitis as well as uterine infection [16, 26, 108, 157]. GBS is also a major cause of early onset neonatal sepsis and has been commonly isolated at autopsy in addition to *E. coli*, and *Enterococcus* [16, 158]. While metagenomics sequencing could identify genes with pathogenic potential to determine pathogenicity of bacteria (bacterial DNA) detected in the placenta, it is difficult to infer pathogenicity exclusively from 16S rRNA gene sequencing data. Nevertheless, the DNA of the notoriously pathogenic bacterial genera detailed above were all found in placental tissue, suggesting an invasive phenotype rather than commensal colonization.

#### **Recommendations for future studies**

In order to establish the existence of a viable placental microbiota several criteria need to be met, which have been detailed previously [36, 41]. Studies which aim to assess the viability of a bacterial DNA signal in a purported low biomass sample type should start with the null hypothesis that the entire DNA signal results from contamination and subsequently attempt to reject it with experimental evidence [159]. Therefore, any study evaluating a potential microbiota of the placenta should

attempt to demonstrate viability through both culture and DNA sequencing. Placentas should come from term cesarean deliveries without labor to obviate contamination during vaginal delivery and subjects should be screened to ensure that only healthy women are sampled (i.e., no history of antenatal infection, pre-eclampsia, recent antibiotic use, signs of infection or inflammation). Additionally, future studies need to include ample sequenced technical controls in order to identify and account for sources of contamination, which will inevitably exist no matter how rigorous and/or sterile the protocol [75]. Universal sources of contamination include environmental DNA, reagents used to process samples and build sequence libraries, and even the sequencing instruments themselves. Further, biological replicates from the same placenta should also be included to ascertain the consistency of any bacterial DNA signal. Moreover, it should not be assumed that all remaining sequences are legitimate after post-hoc contaminant removal by algorithms such as DECONTAM, especially in low microbial biomass environments such as the placenta.

Since 16S rRNA gene sequencing limits of detection have not yet been thoroughly interrogated in placental tissue, serial dilutions of spiked-in live bacteria or cell-free DNA should be included in a portion of tissue samples to demonstrate the feasibility of recovering the bacterial DNA signal from placental tissue. When multiplexing samples, unique dual index primer sets should be used to eliminate the possibility of barcode hopping which is another source of sample “contamination” [160, 161], and before sequencing, low biomass samples should be segregated from higher biomass samples to avoid well-to-well contamination [39, 162]. Furthermore, 16S rRNA gene sequencing results should be complemented with shotgun metagenomics sequencing to allow for strain level microbiome analyses that can more effectively link DNA detected in placental tissues to its source. With strain-level resolution, bacterial DNA signals can be identified as being unique to the placenta in an individually-specific manner within a study and thus suggestive of a placental microbiota, or shared across the placental samples in a study indicating universal sample contamination. If multiple sequencing methods or other investigative methods such as culture are utilized, concordance should be sought among the data from these multiple methods to determine the legitimacy of potentially credible microbial signals. Finally, in conjunction with publishing, all sequence data and accompanying detailed metadata should be submitted to a public database and code for any data analyses or manipulations should be made publicly available so that others can replicate and verify the results.

### Strengths of this study

Broad searches of the available literature were utilized to ensure that all publicly available 16S rRNA gene sequencing data of placental samples (with associated metadata to partition pooled sample data) were incorporated into the re-analysis, which re-examined the data with in-depth comparisons of term placental samples to technical controls. This allowed for the detection of background DNA contamination in the bacterial DNA signal from placental tissue. In addition, potential confounding variables such as mode of delivery, gestational age at delivery, and 16S rRNA gene target hypervariable region were controlled for whenever possible. By utilizing DADA2 to process the sequence data, variation and biases due to post-sequencing processing were eliminated. This enabled ASV-to-ASV comparisons for six studies which targeted the same 16S rRNA gene hypervariable region using the same PCR primers, a first in the placental microbiota field.

### Limitations of this study

The quality and public availability of data and metadata were the primary limiting factors of this re-analysis. Unfortunately, the availability of metadata or even the data themselves is a pervasive issue in the microbiome field [163–165]. While study cohort statistics were well reported overall, detailed metadata for each subject are required in order to perform a proper re-analysis. Ideally, any study investigating the existence of a viable placental microbiota would, at a minimum, include associated metadata by subject for potential confounders (e.g., gestational age at delivery, and mode of delivery).

Additionally, the impacts of individual low abundance ASVs (i.e., less than 1% mean relative abundance) were not evaluated. While some of these ASVs could potentially represent DNA signals from viable bacteria, most were likely stochastic environmental DNA contamination. Finally, while the R package DECONTAM was used to remove likely contaminants by comparing the prevalence of ASVs in biological samples and technical controls, this tool would be unable to identify contaminants introduced during sampling, delivery, or to identify taxa which were truly present in a sample but also happened to be present in most control samples. In addition, the contaminant identification accuracy of DECONTAM also diminishes when used on low biomass samples such as placental samples where the majority of the sequences are likely contaminants [75, 166].

### Conclusion

As we extend the boundaries of DNA sequencing technologies we need to tread carefully, especially in purported low-biomass sites such as the placenta. Although DNA sequencing is required to capture bacteria that are unable

to grow under typical culture conditions, the limitations of current DNA sequencing technology make detection of a legitimate signal or determination of viability unattainable at such low levels [76, 78]. DNA sequencing in and of itself is insufficient to demonstrate the existence of a microbiome in an organ previously believed to be sterile since the presence of DNA merely alludes to former viability not necessarily concurrent with the time of sampling.

Only after demonstrating a valid, viable bacterial DNA signal from term cesarean deliveries, through sterile protocol, with technical controls, and associated culture positive data, can we evaluate the degree to which the maternal immune system tolerates these bacteria without eliciting a deleterious immune response and whether their presence resembles commensal existence or infection. Finally, the placental microbiota may or may not exist, but it is quite clear that attempts to maintain sterility and avoid contamination have not been successful since the vast majority of sequencing reads from placental samples can be attributed to multiple modes of contamination. Therefore, sequencing methodologies require significant improvement before a placental microbiota can be established as 16S rRNA gene sequencing appears to lack the ability to discriminate between a markedly low biomass microbiota and background DNA contamination at present.

## Materials and methods

### Study inclusion criteria

Searches for “human placental microbiome”, “placenta microbiota”, “placental microbiomes”, and “placenta 16S” were queried on PubMed with a cutoff date of 6/16/21 to identify studies addressing the existence of a placental microbiota or lack thereof. Additionally we included our recent preprint [96] in this pool of studies. Of the 387 unique studies identified, 58 performed primary research and 41 implemented 16S rRNA gene sequencing on placental samples (Fig. 1). Therefore, we focused on 16S rRNA gene sequencing data. 16S rRNA gene sequencing is a well-characterized way of detecting and classifying bacterial communities within biological samples [167–169], and it is potentially sensitive enough to detect the typically low number of 16S rRNA bacterial gene copies hypothesized to be in the placenta [34, 170]. 33 of the 41 studies which implemented 16S rRNA gene sequencing included at least one placental sample from an uncomplicated delivery at term [27–29, 36, 37, 39–45, 47, 49–65, 96, 153]. However, only 15 of these 33 studies included publicly available 16S rRNA gene sequence data (i.e., sequencing files uploaded to a public database with a published and accurate accession number with sufficient metadata to partition pooled sample data) [29, 36, 37,

39–44, 50, 53, 57, 58, 96]. Thus, the re-analysis ultimately included 15 studies.

#### **Processing of 16S rRNA gene sequence data using DADA2**

Fastq files of the 16S rRNA gene sequence data from samples included in each study were downloaded from publicly accessible databases. If a study included fastq files that contained sequence data from multiple samples, the data were demultiplexed using QIIME2 (version 2020.2) [171] and SED (GNU Sed 4.7), a stream editor for text processing [172].

Sequence datasets from each study were individually processed using the Differential Abundance Denoising Algorithm (DADA2), which is an R package designed to partition 16S rRNA gene sequences into distinct Amplicon Sequence Variants (ASVs) and to taxonomically classify the resultant ASVs [173]. R version 3.6.1 [174] was used for DADA2 processing and all downstream analyses. Processing followed the 1.16 DADA2 guidelines (<https://benjjneb.github.io/dada2/tutorial.html>), except when stated otherwise. Samples that had an average sequence quality score which dipped below 30 before the expected trim length cutoffs were removed from the dataset. Trim length cutoffs were set to maximize the read length and number of passing samples while still removing poor quality base calls from the ends of reads. Reads were then filtered using the `filterAndTrim()` function with multithread set to TRUE to enable parallel computation and decrease real time spent computing. Error rates of base calling in the filtered sequences were inferred from the data using the `learnErrors()` function with multithread set to TRUE. Using the inferred error rates, sequences were partitioned into ASVs with `pool` and `multithread` set to TRUE. If the `dada()` function failed to complete partitioning after 7 days for a particular study's dataset, which occurred for only one study [36], `pool` was set to FALSE for sample independent sequence partitioning.

If forward and reverse sequences were not yet merged, they were merged using the `mergePairs()` function. In cases where the forward and reverse reads were already merged in publicly available data files, the DADA2 merging step was omitted and the code adjusted for merged input sequences. Merged sequences with lengths greater or less than 20 nucleotides from the expected amplified region were removed from the data set since they were most likely due to non-specific merging of forward and reverse reads resulting in extra-long or extra-short reads. Chimeric sequences were detected and removed using the `removeBimeraDenovo()` function with multithread set to FALSE. This employs the default consensus method instead of the pooled method. The consensus

method determines chimeric sequences in each sample and then compares detected chimeric sequences across samples for a consensus. Taxonomy was assigned to sequences using the Silva 16S rRNA gene bacterial database (v 138) [168, 175]. Species assignments were added, when possible.

For each study, merged datasets of ASV counts and taxonomic classifications were filtered using functions from the R package `dplyr` [176] to remove ASVs that were classified as mitochondrial, chloroplast, or not of bacterial origin. ASVs not classified at the phylum level and samples which did not have at least 100 sequence reads after filtering were removed from the data set.

#### **Removal of likely DNA contaminants through the prevalence-based method of the R package DECONTAM**

To control for background DNA contamination, the R package DECONTAM was used to identify and remove sequences which were more prevalent in technical controls than in placental samples. For likely sequence contaminant removal, only studies which included at least six technical controls [36, 37, 39–43, 50, 96] were included based on the recommendation of the authors of DECONTAM [97]. Technical controls included air swabs, blank DNA extraction kits, and template-free PCR reactions. The DECONTAM prevalence-based function `isNotContaminant()`, recommended for use with low-biomass samples, was used to remove ASVs based on chi-square tests of ASV presence-absence tables [97]. Thresholds were study specific with the goal of excluding most of the low prevalence likely-contaminant ASVs while retaining high prevalence ASVs not likely to be contaminants. Despite using these stringent study specific thresholds, the results were unchanged if the default threshold of 0.5 was used instead.

#### **Normalization of 16S rRNA gene sequence datasets within and across studies**

All datasets were normalized using the function `rarefy_even_depth()` from the R package `phyloseq` (1.30.0) [177]. Following the normalization process, samples whose sequence libraries did not have at least 100 reads were excluded. The remaining samples were subsampled without replacement (i.e., the same sequence was never reselected when subsampling) to the minimum number of sequences per sample within a study. `RNGseed` was set to 1 to fix the seed for reproducible random number generation. This normalization approach was utilized since 16S rRNA gene read counts can vary by five orders of magnitude among samples in a single study. Given this

degree of variability, normalization to the same sequence depth is justified and required for accurate comparisons of 16S rRNA gene profiles among samples [178].

### Data visualization

Heatmaps illustrating the relative abundances of ASVs were prepared using the ComplexHeatmap R package (version 2.2.0) [179]. Samples were grouped by sample type and ASVs were ordered based on ASV mean relative abundances within samples.

The function `vegdist()` from the R package `vegan` (version 2.5–6) [180] was used to create Bray-Curtis dissimilarity matrices which were then used as the basis for Principal Coordinates Analysis plots that were generated using the `pco()` function from the R package `ecodist` (version 2.0.7) [181]. The Bray-Curtis index was used because it takes into account both the composition and structure of 16S rRNA gene sequence bacterial profiles [182]. The Lingoes method was used to correct for negative eigenvalues so that dissimilarity between samples could be completely explained in Euclidean space [183].

All code to produce the published figures from the raw data is included in the supplementary materials in an R markdown file available at [https://github.com/jp589/Placental\\_Microbiota\\_Reanalysis](https://github.com/jp589/Placental_Microbiota_Reanalysis).

### Statistical analysis

Homogeneity of 16S rRNA gene sequence profiles between placental samples and technical controls was tested using `betadisper()` from the R package `vegan` (version 2.5–6) [180]. Differences in 16S rRNA gene profile structure between placental samples by sampling level and technical controls were evaluated using the function `pairwise.adonis()` from the R package `pairwiseAdonis` (version 0.4) [184].

All code to recapitulate these analyses are included in an R markdown file available at [https://github.com/jp589/Placental\\_Microbiota\\_Reanalysis](https://github.com/jp589/Placental_Microbiota_Reanalysis).

### Supplementary Information

The online version contains supplementary material available at <https://doi.org/10.1186/s12866-023-02764-6>.

Additional file 1.

### Acknowledgements

Some raw data files and metadata included in the analyses were not publicly available, yet were generously provided upon request. Specifically, Drs. Shuppe-Koistinen and Hugerth provided raw sequence data for technical control samples for the Sterpu et al. study, as well as mode of delivery metadata, and Dr. Leon provided metadata for gestational age at delivery and mode of delivery for the Leon et al. study, which used samples taken from the Baby Bio Bank [185]. We thank David Kracht and Dylan Millikin, both members of the Theis laboratory, for feedback and editing on the manuscript and the R markdown file.

### Authors' contributions

JP and KRT conceived the manuscript. JP wrote the original draft and completed all primary analyses. RR and NG-L provided critical resources and guidance in completing the manuscript. JMG, ADW, JG, and KRT provided guidance in data analysis and revising the manuscript.

### Funding

This research was supported, in part, by the Pregnancy Research Branch (PRB, formerly known as the Perinatology Research Branch), Division of Intramural Research, Eunice Kennedy Shriver National Institute of Child Health and Human Development, National Institutes of Health, U. S. Department of Health and Human Services (NICHD/NIH/DHHS), and, in part, with federal funds from the NICHD/NIH/DHHS under Contract No. HHSN275201300006C. This research was also supported by the Wayne State University Perinatal Initiative in Maternal, Perinatal and Child Health. The funders had no role in the study design, data collection and analysis, decision to publish, or preparation of the manuscript. Dr. Romero has contributed to this work as part of his official duties as an employee of the United States Federal Government.

### Availability of data and materials

All DADA2 processed sequence data and metadata from the studies included in this critical review, as well as an R markdown file with the code to produce each of the figures and tables, are available online at [https://github.com/jp589/Placental\\_Microbiota\\_Reanalysis](https://github.com/jp589/Placental_Microbiota_Reanalysis). In addition, an R package 'dada2tools' with functions for efficient analysis of the data, is available at <https://github.com/jp589/dada2tools>.

Raw data for each of the studies included in analyses can be accessed through the following accession numbers:

De Goffau et al. PMID: 31367035 / Accession no. ERP109246;  
Dinsdale et al. PMID: 33194782 / Accession no. PRJEB39698;  
Gomez-Arango et al. PMID: 28240736 / Accession no. PRJNA357524;  
Lauder et al. PMID: 27338728 / Accession no. PRJNA309332;  
Leiby et al. PMID: 30376898 / Accession no. PRJNA451186;  
Leon et al. PMID: 29776928 / Accession no. PRJEB25986;  
Liu et al. PMID: 31685443 / Accession no. PRJNA559967;  
Olomu et al. PMID: 32527226 / Accession no. PRJNA577959;  
Parnell et al. PMID: 28894161 / Accession no. PRJNA395716;  
Seferovic et al. PMID: 31055031 / Accession no. PRJNA511648;  
Sterpu et al. PMID: 32871131 / Accession no. PRJEB38528;  
Tang et al. PMID: 33193081 / Accession no. PRJNA564455;  
Theis et al. PMID: 30832984 / Accession no. PRJNA397876;  
Theis, Winters et al. bioRxiv MS: 497119 / Accession no. PRJNA692425;  
Younge et al. PMID: 31479427 / Accession no. PRJNA557826.

### Declarations

#### Ethics approval and consent to participate

Not applicable. All data in the manuscript are publicly available.

#### Consent for publication

Not applicable.

#### Competing interests

The authors report there are no competing interests or conflicts of interest to declare.

#### Author details

<sup>1</sup>Pregnancy Research Branch, Division of Obstetrics and Maternal-Fetal Medicine, Division of Intramural Research, Eunice Kennedy Shriver National Institute of Child Health and Human Development, National Institutes of Health, U.S. Department of Health and Human Services, Detroit, MI, USA. <sup>2</sup>Department of Biochemistry, Microbiology, and Immunology, Wayne State University School of Medicine, Detroit, Michigan, USA. <sup>3</sup>Department of Obstetrics and Gynecology, University of Michigan, Ann Arbor, Michigan, USA. <sup>4</sup>Department of Epidemiology and Biostatistics, Michigan State University, East Lansing, Michigan, USA. <sup>5</sup>Center for Molecular Medicine and Genetics, Wayne State University, Detroit, Michigan, USA. <sup>6</sup>Detroit Medical Center, Detroit, Michigan, USA. <sup>7</sup>Department of Obstetrics and Gynecology, Wayne State University School of Medicine, Detroit, Michigan, USA. <sup>8</sup>Division of Obstetrics



and Gynecology, School of Medicine, Faculty of Medicine, Pontificia Universidad Católica de Chile, Santiago, Chile.

Received: 10 August 2022 Accepted: 10 January 2023  
Published online: 18 March 2023

## References

- Aquino TI, Zhang J, Kraus FT, Knefel R, Taff T. Subchorionic fibrin cultures for bacteriologic study of the placenta. *Am J Clin Pathol*. 1984;81:482–6. <https://doi.org/10.1093/ajcp/81.4.482>.
- Butler B. Value of endometrial cultures in sterility investigation. *Fertil Steril*. 1958;9:269–73. [https://doi.org/10.1016/S0015-0282\(16\)33070-9](https://doi.org/10.1016/S0015-0282(16)33070-9).
- Perez-Muñoz ME, Arrieta M-C, Ramer-Tait AE, Walter J. A critical assessment of the “sterile womb” and “in utero colonization” hypotheses: implications for research on the pioneer infant microbiome. *Microbiome*. 2017;5. <https://doi.org/10.1186/s40168-017-0268-4>.
- Baud D, Greub G. Intracellular bacteria and adverse pregnancy outcomes. *Clin Microbiol Infect*. 2011;17:1312–22. <https://doi.org/10.1111/j.1469-0691.2011.03604.x>.
- Gibbs RS. The relationship between infections and adverse pregnancy outcomes: an overview. *Annals of Periodontology*. 2001;6:153–63. <https://doi.org/10.1902/annals.2001.6.1.153>.
- Brabin BJ. Epidemiology of infection in pregnancy. *Rev Infect Dis*. 1985;7:579–603. <https://doi.org/10.1093/clinids/7.5.579>.
- Cappelletti M, Presicce P, Kallapur SG. Immunobiology of acute Chorioamnionitis. *Front Immunol*. 2020;11. <https://doi.org/10.3389/fimmu.2020.00649>.
- Gibbs RS, Romero R, Hillier SL, Eschenbach DA, Sweet RL. A review of premature birth and subclinical infection. *Am J Obstet Gynecol*. 1992;166:1515–28. [https://doi.org/10.1016/0002-9378\(92\)91628-N](https://doi.org/10.1016/0002-9378(92)91628-N).
- Goldenberg RL, Hauth JC, Andrews WW. Intrauterine infection and preterm delivery. *N Engl J Med*. 2000;342:1500–7. <https://doi.org/10.1056/NEJM200005183422007>.
- Jefferson KK. The bacterial etiology of preterm birth. *Adv Appl Microbiol*. 2012;80:1–22. <https://doi.org/10.1016/B978-0-12-394381-1.00001-5>.
- Kundsin RB, Leviton A, Allred EN, Poulin SA. *Ureaplasma urealyticum* infection of the placenta in pregnancies that ended prematurely. *Obstet Gynecol*. 1996;87:122–7. [https://doi.org/10.1016/0029-7844\(95\)00376-2](https://doi.org/10.1016/0029-7844(95)00376-2).
- Romero R, Ghidini A, Mazor M, Behnke E. Microbial invasion of the amniotic cavity in premature rupture of membranes. *Clin Obstet Gynecol*. 1991;34(4):769–78. <https://doi.org/10.1097/00003081-19911200-00013>.
- Romero R, et al. The role of infection in preterm labour and delivery. *Paediatr Perinat Epidemiol*. 2001;15(Suppl 2):41–56. <https://doi.org/10.1046/j.1365-3016.2001.00007.x>.
- Abele-Horn M, Scholz M, Wolff C, Kolben M. High-density vaginal *Ureaplasma urealyticum* colonization as a risk factor for chorioamnionitis and preterm delivery. *Acta Obstet Gynecol Scand*. 2000;79:973–8.
- Green ES, Arck PC. Pathogenesis of preterm birth: bidirectional inflammation in mother and fetus. *Semin Immunopathol*. 2020;42:413–29. <https://doi.org/10.1007/s00281-020-00807-y>.
- McClure EM, Dudley DJ, Reddy UM, Goldenberg RL. Infectious causes of stillbirth: a clinical perspective. *Clin Obstet Gynecol*. 2010;53:635–45. <https://doi.org/10.1097/GRF.0b013e3181eb6620>.
- Kovalovszki L, Villanyi Z, Pataki I, Veszolovszky I, Nagy ZB. Isolation of aerobic bacteria from the placenta. *Acta Paediatr Acad Sci Hung*. 1982;23:357–60.
- Onderdonk AB, et al. Detection of bacteria in placental tissues obtained from extremely low gestational age neonates. *Am J Obstet Gynecol*. 2008;198(110):e111–7. <https://doi.org/10.1016/j.ajog.2007.05.044>.
- Pettker CM, et al. Value of placental microbial evaluation in diagnosing intra-amniotic infection. *Obstet Gynecol*. 2007;109:739–49. <https://doi.org/10.1097/01.AOG.0000255663.47512.23>.
- Steel JH, et al. Bacteria and inflammatory cells in fetal membranes do not always cause preterm labor. *Pediatr Res*. 2005;57:404–11. <https://doi.org/10.1203/01.PDR.0000153869.96337.90>.
- Hillier SL, et al. A Case—Control Study of Chorioamnion Infection and Histologic Chorioamnionitis in Prematurity. *N Engl J Med*. 1988;319:972–8. <https://doi.org/10.1056/nejm198810133191503>.
- Huber BM, et al. Vertical transmission of *Mycoplasma pneumoniae* infection. *Neonatology*. 2018;114:332–6. <https://doi.org/10.1159/000490610>.
- Min AM, et al. Placental histopathology in preterm birth with confirmed maternal infection: a systematic literature review. *PLoS One*. 2021;16:e0255902. <https://doi.org/10.1371/journal.pone.0255902>.
- Park JH, et al. Challenging management of chorioamnionitis with placental listeriosis: lessons from 2 cases. *Obstet Gynecol Sci*. 2018;61:688–92. <https://doi.org/10.5468/ogs.2018.61.6.688>.
- Salafia CM, et al. Placental pathologic findings in preterm birth. *Am J Obstet Gynecol*. 1991;165:934–8. [https://doi.org/10.1016/0002-9378\(91\)90443-u](https://doi.org/10.1016/0002-9378(91)90443-u).
- Sweeney EL, et al. Placental infection with *Ureaplasma* species is associated with histologic Chorioamnionitis and adverse outcomes in moderately preterm and late-preterm infants. *J Infect Dis*. 2016;213:1340–7. <https://doi.org/10.1093/infdis/jiv587>.
- Aagaard K, et al. The placenta harbors a unique microbiome. *Sci Transl Med*. 2014;6:237ra265. <https://doi.org/10.1126/scitranslmed.3008599>.
- Collado MC, Rautava S, Aakko J, Isolauri E, Salminen S. Human gut colonisation may be initiated in utero by distinct microbial communities in the placenta and amniotic fluid. *Sci Rep*. 2016;6:23129. <https://doi.org/10.1038/srep23129>.
- Younge N, et al. Fetal exposure to the maternal microbiota in humans and mice. *JCI Insight*. 2019;4. <https://doi.org/10.1172/jci.insight.127806>.
- Stinson LF, Boyce MC, Payne MS, Keelan JA. The not-so-sterile womb: evidence that the human fetus is exposed to bacteria prior to birth. *Front Microbiol*. 2019;10:1124. <https://doi.org/10.3389/fmicb.2019.01124>.
- Stinson LF, Payne MS, Keelan JA. Planting the seed: origins, composition, and postnatal health significance of the fetal gastrointestinal microbiota. *Crit Rev Microbiol*. 2017;43:352–69. <https://doi.org/10.1080/1040841x.2016.1211088>.
- Tarazi C, Agostoni C, Kim KS. The placental microbiome and pediatric research. *Pediatr Res*. 2014;76:218–9. <https://doi.org/10.1038/pr.2014.95>.
- Coscia A, Bardanzellu F, Caboni E, Fanos V, Peroni DG. When a neonate is born, so is a microbiota. *Life (Basel)*. 2021;11:148. <https://doi.org/10.3390/life11020148>.
- Al Alam D, et al. Human fetal Lungs Harbor a microbiome signature. *Am J Respir Crit Care Med*. 2020;201:1002–6. <https://doi.org/10.1164/rccm.201911-2127LE>.
- Teisala, K Endometrial microbial flora of hysterectomy specimens *European Journal of Obstetrics & Gynecology and Reproductive Biology* **26**, 151–155, doi:[https://doi.org/10.1016/0028-2243\(87\)90050-5](https://doi.org/10.1016/0028-2243(87)90050-5) (1987).
- de Goffau MC, et al. Human placenta has no microbiome but can contain potential pathogens. *Nature*. 2019;572:329–34. <https://doi.org/10.1038/s41586-019-1451-5>.
- Lauder AP, et al. Comparison of placenta samples with contamination controls does not provide evidence for a distinct placenta microbiota. *Microbiome*. 2016;4:29. <https://doi.org/10.1186/s40168-016-0172-3>.
- Leiby JS, et al. Lack of detection of a human placenta microbiome in samples from preterm and term deliveries. *Microbiome*. 2018;6:196. <https://microbiomejournal.biomedcentral.com/articles/10.1186/s40168-018-0575-4>.
- Olomu IN, et al. Elimination of “kitome” and “splashome” contamination results in lack of detection of a unique placental microbiome. *BMC Microbiol*. 2020;20:157. <https://doi.org/10.1186/s12866-020-01839-y>.
- Sterpu I, et al. No evidence for a placental microbiome in human pregnancies at term. *Am J Obstet Gynecol*. 2021;224:296 e291–296 e223. <https://doi.org/10.1016/j.ajog.2020.08.103>.
- Theis KR, et al. Does the human placenta delivered at term have a microbiota? Results of cultivation, quantitative real-time PCR, 16S rRNA gene sequencing, and metagenomics. *Am J Obstet Gynecol*. 2019;220:267 e261–267 e239. <https://doi.org/10.1016/j.ajog.2018.10.018>.
- Leon LJ, et al. Enrichment of clinically relevant organisms in spontaneous preterm-delivered placentas and reagent contamination across all clinical groups in a large pregnancy cohort in the United Kingdom. *Appl Environ Microbiol*. 2018;84. <https://doi.org/10.1128/AEM.00483-18>.
- Parnell LA, et al. Microbial communities in placentas from term normal pregnancy exhibit spatially variable profiles. *Sci Rep*. 2017;7:11200. <https://doi.org/10.1038/s41598-017-11514-4>.
- Seferovic MD, et al. Visualization of microbes by 16S in situ hybridization in term and preterm placentas without intraamniotic infection. *Am J*

- Obstet Gynecol. 2019;221:146 e141-146 e123. <https://doi.org/10.1016/j.ajog.2019.04.036>.
45. Amarasekara R, Jayasekara RW, Senanayake H, Dissanayake VH. Microbiome of the placenta in pre-eclampsia supports the role of bacteria in the multifactorial cause of pre-eclampsia. *J Obstet Gynaecol Res*. 2015;41:662–9. <https://doi.org/10.1111/jog.12619>.
  46. Antony KM, et al. The preterm placental microbiome varies in association with excess maternal gestational weight gain. *Am J Obstet Gynecol*. 2015;212(653):e651–16. <https://doi.org/10.1016/j.ajog.2014.12.041>.
  47. Bassols J, et al. Gestational diabetes is associated with changes in placental microbiota and microbiome. *Pediatr Res*. 2016;80:777–84. <https://doi.org/10.1038/pr.2016.155>.
  48. Dong X-D, et al. Bacterial communities in neonatal feces are similar to mothers' placentae. *Canadian Journal of Infectious Diseases and Medical Microbiology*. 2015;26:90–4. <https://doi.org/10.1155/2015/737294>.
  49. Benny PA, et al. Placentas delivered by pre-pregnant obese women have reduced abundance and diversity in the microbiome. *FASEB J*. 2021;35:e21524. <https://doi.org/10.1096/fj.202002184RR>.
  50. Dinsdale NK, Castano-Rodriguez N, Quinlivan JA, Mendz GL. Comparison of the genital microbiomes of pregnant Aboriginal and non-Aboriginal women. *Front Cell Infect Microbiol*. 2020;10:523764. <https://doi.org/10.3389/fcimb.2020.523764>.
  51. Doyle RM, et al. Term and preterm labour are associated with distinct microbial community structures in placental membranes which are independent of mode of delivery. *Placenta*. 2014;35:1099–101. <https://doi.org/10.1016/j.placenta.2014.10.007>.
  52. Doyle RM, et al. Bacterial communities found in placental tissues are associated with severe chorioamnionitis and adverse birth outcomes. *PLoS One*. 2017;12:e0180167. <https://doi.org/10.1371/journal.pone.0180167>.
  53. Gomez-Arango LF, et al. Antibiotic treatment at delivery shapes the initial oral microbiome in neonates. *Sci Rep*. 2017;7:43481. <https://doi.org/10.1038/srep43481>.
  54. Gomez-Arango LF, et al. Contributions of the maternal oral and gut microbiome to placental microbial colonization in overweight and obese pregnant women. *Sci Rep*. 2017;7:2860. <https://doi.org/10.1038/s41598-017-03066-4>.
  55. Hockney R, et al. Fetal membrane bacterial load is increased in histologically confirmed inflammatory chorioamnionitis: a retrospective cohort study. *Placenta*. 2020;91:43–51. <https://doi.org/10.1016/j.placenta.2020.01.006>.
  56. Kuperman AA, et al. Deep microbial analysis of multiple placentas shows no evidence for a placental microbiome. *BJOG*. 2020;127:159–69. <https://doi.org/10.1111/1471-0528.15896>.
  57. Liu CJ, et al. Is the delivery mode a critical factor for the microbial communities in the meconium? *EBioMedicine*. 2019;49:354–63. <https://doi.org/10.1016/j.ebiom.2019.10.045>.
  58. Tang N, et al. The association between gestational diabetes and microbiota in placenta and cord blood. *Front Endocrinol (Lausanne)*. 2020;11:550319. <https://doi.org/10.3389/fendo.2020.550319>.
  59. Tuominen H, Collado MC, Rautava J, Syrjanen S, Rautava S. Composition and maternal origin of the neonatal oral cavity microbiota. *J Oral Microbiol*. 2019;11:1663084. <https://doi.org/10.1080/20002297.2019.1663084>.
  60. Tuominen H, Rautava S, Syrjanen S, Collado MC, Rautava J. HPV infection and bacterial microbiota in the placenta, uterine cervix and oral mucosa. *Sci Rep*. 2018;8:9787. <https://doi.org/10.1038/s41598-018-27980-3>.
  61. Williams N, et al. Investigating the origin of the fetal gut and placenta microbiome in twins. *J Matern Fetal Neonatal Med*. 2021;1-11. <https://doi.org/10.1080/14767058.2021.1936487>.
  62. Wu S, et al. Do maternal microbes shape newborn Oral microbes? *Indian J Microbiol*. 2021;61:16–23. <https://doi.org/10.1007/s12088-020-00901-7>.
  63. Zheng J, et al. The placental microbiome varies in association with low birth weight in full-term neonates. *Nutrients*. 2015;7:6924–37. <https://doi.org/10.3390/nu7085315>.
  64. Zheng J, et al. The placental microbiota is altered among subjects with gestational diabetes mellitus: a pilot study. *Front Physiol*. 2017;8:675. <https://doi.org/10.3389/fphys.2017.00675>.
  65. Zheng J, et al. Correlation of placental microbiota with fetal macrosomia and clinical characteristics in mothers and newborns. *Oncotarget*. 2017;8:82314–25. <https://doi.org/10.18632/oncotarget.19319>.
  66. Gil A, et al. Is there evidence for bacterial transfer via the placenta and any role in the colonization of the infant gut? - a systematic review. *Crit Rev Microbiol*. 2020;46:493–507. <https://doi.org/10.1080/1040841X.2020.1800587>.
  67. Blaser MJ, et al. Lessons learned from the prenatal microbiome controversy. *Microbiome*. 2021;9. <https://doi.org/10.1186/s40168-020-00946-2>.
  68. Silverstein RB, Mysorekar IU. Group therapy on in utero colonization: seeking common truths and a way forward. *Microbiome*. 2021;9. <https://doi.org/10.1186/s40168-020-00968-w>.
  69. Walter J, Hornef MW. A philosophical perspective on the prenatal in utero microbiome debate. *Microbiome*. 2021;9. <https://doi.org/10.1186/s40168-020-00979-7>.
  70. Dominguez-Bello MG, et al. Delivery mode shapes the acquisition and structure of the initial microbiota across multiple body habitats in newborns. *Proc Natl Acad Sci U S A*. 2010;107:11971–5. <https://doi.org/10.1073/pnas.1002601107>.
  71. Agrawal V, Hirsch E. Intrauterine infection and preterm labor. *Semin fetal neonatal med*. 2012;17:12–9. <https://doi.org/10.1016/j.siny.2011.09.001>.
  72. Klein LL, Gibbs RS. Infection and preterm birth. *Obstet Gynecol Clin N Am*. 2005;32:397–410. <https://doi.org/10.1016/j.ogc.2005.03.001>.
  73. Stinson LF, Payne MS. Infection-mediated preterm birth: bacterial origins and avenues for intervention. *Aust N Z J Obstet Gynaecol*. 2019;59:781–90. <https://doi.org/10.1111/ajo.13078>.
  74. Romero R, et al. The role of inflammation and infection in pre-term birth. *Semin Reprod Med*. 2007;25:21–39. <https://doi.org/10.1055/s-2006-956773>.
  75. Kennedy KM, et al. Fetal meconium does not have a detectable microbiota before birth. *Nat Microbiol*. 2021. <https://doi.org/10.1038/s41564-021-00904-0>.
  76. Glassing A, Dowd SE, Galandiuk S, Davis B, Chiodini RJ. Inherent bacterial DNA contamination of extraction and sequencing reagents may affect interpretation of microbiota in low bacterial biomass samples. *Gut Pathog*. 2016;8(24). <https://doi.org/10.1186/s13099-016-0103-7>.
  77. O'Callaghan JL, et al. Re-assessing microbiomes in the low-biomass reproductive niche. *BJOG*. 2020;127:147–58. <https://doi.org/10.1111/1471-0528.15974>.
  78. Salter SJ, et al. Reagent and laboratory contamination can critically impact sequence-based microbiome analyses. *BMC Biol*. 2014;12:87. <https://doi.org/10.1186/s12915-014-0087-z>.
  79. Weiss S, et al. Tracking down the sources of experimental contamination in microbiome studies. *Genome biology*. 2014;15. <https://doi.org/10.1186/s13059-014-0564-2>.
  80. Hasrat R, et al. Benchmarking laboratory processes to characterise low-biomass respiratory microbiota. *Sci Rep*. 2021;11:17148. <https://doi.org/10.1038/s41598-021-96556-5>.
  81. Marsh RL, et al. how low can we go? The implications of low bacterial load in respiratory microbiota studies. *Pneumonia (Nathan)*. 2018;10:7 <<http://europepmc.org/abstract/MED/30003009>,<https://doi.org/10.1186/s41479-018-0051-8>,<https://europepmc.org/articles/PMC6033291>,<https://europepmc.org/articles/PMC6033291?pdf=render>>.
  82. Saladié M, et al. Microbiomic analysis on low abundant respiratory biomass samples; improved recovery of microbial DNA from Bronchoalveolar lavage fluid. *Front Microbiol*. 2020;11:572504. <https://doi.org/10.3389/fmicb.2020.572504>.
  83. Broderick NA, Nagy L. Bacteria may be in the liver, but the jury is still out. *J Clin Invest*. 2022;132. <https://doi.org/10.1172/jci158999>.
  84. Link CD. Is there a brain microbiome? *Neurosci Insights*. 2021;16:26331055211018709. <https://doi.org/10.1177/26331055211018709>.
  85. Selway CA, Eisenhofer R, Weyrich LS. Microbiome applications for pathology: challenges of low microbial biomass samples during diagnostic testing. *J Pathol Clin Res*. 2020;6:97–106. <https://doi.org/10.1002/cjp.2.151>.
  86. Callahan BJ, McMurdie PJ, Holmes SP. Exact sequence variants should replace operational taxonomic units in marker-gene data analysis. *The ISME Journal*. 2017;11:2639–43. <https://doi.org/10.1038/ismej.2017.119>.
  87. Schloss PD, McMahon K. Amplicon sequence variants artificially split bacterial genomes into separate clusters. *mSphere*. 2021;6:e00191–21. <https://doi.org/10.1128/mSphere.00191-21>.

88. Ravel J, et al. Vaginal microbiome of reproductive-age women. *Proc Natl Acad Sci U S A*. 2011;108(Suppl 1):4680–7. <https://doi.org/10.1073/pnas.1002611107>.
89. Ma ZS, Li L. Quantifying the human vaginal community state types (CSTs) with the species specificity index. *PeerJ*. 2017;5:e3366–6. <https://doi.org/10.7717/peerj.3366>.
90. Fiore JR, et al. The absence of culturable bacteria from at term placentae from HIV-negative and positive women argues against a placental unique microbiota. *Minerva Ginecol*. 2019;71:476–7. <https://doi.org/10.23736/S0026-4784.19.04474-5>.
91. Gschwind R, et al. Evidence for contamination as the origin for bacteria found in human placenta rather than a microbiota. *PLoS One*. 2020;15:e0237232. <https://doi.org/10.1371/journal.pone.0237232>.
92. Lannon SMR, et al. Parallel detection of lactobacillus and bacterial vaginosis-associated bacterial DNA in the chorioamnion and vagina of pregnant women at term. *J Matern Fetal Neonatal Med*. 2019;32:2702–10. <https://doi.org/10.1080/14767058.2018.1446208>.
93. Prince AL, et al. The placental membrane microbiome is altered among subjects with spontaneous preterm birth with and without chorioamnionitis. *Am J Obstet Gynecol*. 2016;214:627 e621–627 e616. <https://doi.org/10.1016/j.ajog.2016.01.193>.
94. Satokari R, Grönroos T, Laitinen K, Salminen S, Isolauri E. Bifidobacterium and Lactobacillus DNA in the human placenta. *Lett Appl Microbiol*. 2009;48:8–12. <https://doi.org/10.1111/j.1472-765x.2008.02475.x>.
95. Zhu L, et al. Bacterial communities in the womb during healthy pregnancy. *Front Microbiol*. 2018;9:2163. <https://doi.org/10.3389/fmicb.2018.02163>.
96. Theis KR, et al. Bacterial profiles of the human placenta from term and preterm deliveries. *bioRxiv*. 2022. <https://doi.org/10.1101/2022.06.21.497119>.
97. Davis NM, Proctor DM, Holmes SP, Relman DA, Callahan BJ. Simple statistical identification and removal of contaminant sequences in marker-gene and metagenomics data. *Microbiome*. 2018;6:226. <https://doi.org/10.1186/s40168-018-0605-2>.
98. Jones HE, et al. Differing prevalence and diversity of bacterial species in fetal membranes from very preterm and term labor. *PLoS One*. 2009;4:e8205. <https://doi.org/10.1371/journal.pone.0008205>.
99. Byrd AL, Belkaid Y, Segre JA. The human skin microbiome. *Nat Rev Microbiol*. 2018;16:143–55. <https://doi.org/10.1038/nrmicro.2017.157>.
100. Bushman FD. De-discovery of the placenta microbiome. *Am J Obstet Gynecol*. 2019;220:213–4. <https://doi.org/10.1016/j.ajog.2018.11.1093>.
101. Cao B, Stout MJ, Lee I, Mysorekar IU. Placental microbiome and its role in preterm birth. *Neoreviews*. 2014;15:e537–45. <https://doi.org/10.1542/neo.15-12-e537>.
102. Chen HJ, Gur TL. Intrauterine microbiota: missing, or the missing Link? *Trends Neurosci*. 2019;42:402–13. <https://doi.org/10.1016/j.tins.2019.03.008>.
103. Dudley D. The placental microbiome: yea, nay or maybe? *BJOG Int J Obstet Gynaecol*. 2020;127:170–0. <https://doi.org/10.1111/1471-0528.15994>.
104. Eienkel R, Zygmunt M, Muzzio DO. Microorganisms in the healthy upper reproductive tract: from denial to beneficial assignments for reproductive biology. *Reprod Biol*. 2019;19:113–8. <https://doi.org/10.1016/j.repbio.2019.04.001>.
105. Fischer LA, Demerath E, Bittner-Eddy P, Costalonga M. Placental colonization with periodontal pathogens: the potential missing link. *Am J Obstet Gynecol*. 2019;221:383–392.e383. <https://doi.org/10.1016/j.ajog.2019.04.029>.
106. Fricke WF, Ravel J. Microbiome or no microbiome: are we looking at the prenatal environment through the right lens? *Microbiome*. 2021;9. <https://doi.org/10.1186/s40168-020-00947-1>.
107. Gschwind R, Fournier T, Butel M-J, Wydau-Dematteis S. Établissement du microbiote. *Med Sci (Paris)*. 2018;34:331–7.
108. Heerema-Mckenny A. Defense and infection of the human placenta. *APMIS*. 2018;126:570–88. <https://doi.org/10.1111/apm.12847>.
109. Heil BA, Paccamonti DL, Sones JL. Role for the mammalian female reproductive tract microbiome in pregnancy outcomes. *Physiol Genomics*. 2019;51:390–9. <https://doi.org/10.1152/physiolgenomics.00045.2019>.
110. Hornef M, Penders J. Does a prenatal bacterial microbiota exist? *Mucosal Immunol*. 2017;10:598–601. <https://doi.org/10.1038/mi.2016.141>.
111. Kamińska D, Gajęcka M. Is the role of human female reproductive tract microbiota underestimated? *Benef Microbes*. 2017;8:327–43. <https://doi.org/10.3920/bm2015.0174>.
112. Kliman HJ. Comment on "the placenta harbors a unique microbiome". *Sci Transl Med*. 2014;6:254le254. <https://doi.org/10.1126/scitranslmed.3009864>.
113. Mei C, Yang W, Wei X, Wu K, Huang D. The unique microbiome and innate immunity during pregnancy. *Front Immunol*. 2019;10:2886–6. <https://doi.org/10.3389/fimmu.2019.02886>.
114. Mesa MD, et al. The evolving microbiome from pregnancy to early infancy: a comprehensive review. *Nutrients*. 2020;12:133. <https://doi.org/10.3390/nu12010133>.
115. Mor G, Kwon J-Y. Trophoblast-microbiome interaction: a new paradigm on immune regulation. *Am J Obstet Gynecol*. 2015;213:S131–7. <https://doi.org/10.1016/j.ajog.2015.06.039>.
116. Mysorekar IU, Cao B. Microbiome in parturition and preterm birth. *Semin Reprod Med*. 2014;32:50–5. <https://doi.org/10.1055/s-0033-1361830>.
117. Neuman H, Koren O. The pregnancy microbiome. *Nestle Nutr Inst Workshop Ser*. 2017;88:1–9. <https://doi.org/10.1159/000455207>.
118. Nuriel-Ohayon M, Neuman H, Koren O. Microbial changes during pregnancy, birth, and infancy. *Front Microbiol*. 2016;7. <https://doi.org/10.3389/fmicb.2016.01031>.
119. Olaniyi KS, Moodley J, Mahabeer Y, Mackraj I. Placental microbial colonization and its association with pre-eclampsia. *Front Cell Infect Microbiol*. 2020;10:413. <https://doi.org/10.3389/fcimb.2020.00413>.
120. Parnell LA, Briggs CM, Mysorekar IU. Maternal microbiomes in preterm birth: recent progress and analytical pipelines. *Semin Perinatol*. 2017;41:392–400. <https://doi.org/10.1053/j.semperi.2017.07.010>.
121. Parris KM, Amabebe E, Cohen MC, Anumba DO. Placental microbial-metabolite profiles and inflammatory mechanisms associated with preterm birth. *J Clin Pathol*. 2021;74:10–8. <https://doi.org/10.1136/clinpath-2020-206536>.
122. Pelzer E, Gomez-Arango LF, Barrett HL, Nitert MD. Review: maternal health and the placental microbiome. *Placenta*. 2017;54:30–7. <https://doi.org/10.1016/j.placenta.2016.12.003>.
123. Peric A, Weiss J, Vulliamoz N, Baud D, Stojanov M. Bacterial colonization of the female upper genital tract. *Int J Mol Sci*. 2019;20:3405. <https://doi.org/10.3390/ijms20143405>.
124. Power ML, Quagliari C, Schulkin J. Reproductive microbiomes: a new thread in the microbial network. *Reprod Sci*. 2017;24:1482–92. <https://doi.org/10.1177/1933719117698577>.
125. Prince AL, Antony KM, Chu DM, Aagaard KM. The microbiome, parturition, and timing of birth: more questions than answers. *J Reprod Immunol*. 2014;104:105:12–9. <https://doi.org/10.1016/j.jri.2014.03.006>.
126. Prince AL, Antony KM, Ma J, Aagaard KM. The microbiome and development: a mother's perspective. *Semin Reprod Med*. 2014;32:14–22. <https://doi.org/10.1055/s-0033-1361818>.
127. Prince AL, et al. The perinatal microbiome and pregnancy: moving beyond the vaginal microbiome. *Cold Spring Harb Perspect Med*. 2015;5:a023051–1. <https://doi.org/10.1101/cshperspect.a023051>.
128. Romano-Keeler J, Weitkamp J-H. Maternal influences on fetal microbial colonization and immune development. *Pediatr Res*. 2015;77:189–95. <https://doi.org/10.1038/pr.2014.163>.
129. Schoenmakers S, Steegers-Theunissen R, Faas M. The matter of the reproductive microbiome. *Obstet Med*. 2019;12:107–15. <https://doi.org/10.1177/1753495x18775899>.
130. Segata N. No bacteria found in healthy placentas. *Nature*. 2019;572:317–8. <https://doi.org/10.1038/d41586-019-02262-8>.
131. Selma-Royo M, et al. Shaping microbiota during the first 1000 days of life. *Adv Exp Med Biol*. 2019;1125:3–24. [https://doi.org/10.1007/5584\\_2018\\_312](https://doi.org/10.1007/5584_2018_312).
132. Singh A, Mittal M. Neonatal microbiome - a brief review. *J Matern Fetal Neonatal Med*. 2020;33:3841–8. <https://doi.org/10.1080/14767058.2019.1583738>.
133. Solt I. The human microbiome and the great obstetrical syndromes: a new frontier in maternal-fetal medicine. *Best Pract Res Clin Obstet Gynaecol*. 2015;29:165–75. <https://doi.org/10.1016/j.bpobgyn.2014.04.024>.
134. Taddei CR, Cortez RV, Mattar R, Torloni MR, Daher S. Microbiome in normal and pathological pregnancies: a literature overview. *Am J Reprod Immunol*. 2018;80:e12993. <https://doi.org/10.1111/aji.12993>.
135. Infectious TL, D. Microbiome studies and "blue whales in the Himalayas". *Lancet Infect Dis*. 2018;18:925. [https://doi.org/10.1016/s1473-3099\(18\)30503-6](https://doi.org/10.1016/s1473-3099(18)30503-6).
136. Vinturache AE, Gyamfi-Bannerman C, Hwang J, Mysorekar IU, Jacobsson B. Maternal microbiome - a pathway to preterm birth. *Semin Fetal Neonatal Med*. 2016;21:94–9. <https://doi.org/10.1016/j.siny.2016.02.004>.

137. Walker WA. The importance of appropriate initial bacterial colonization of the intestine in newborn, child, and adult health. *Pediatr Res*. 2017;82:387–95. <https://doi.org/10.1038/pr.2017.111>.
138. Walker WA. Bacterial colonization of the newborn gut, immune development, and prevention of disease. *Nestle Nutr Inst Workshop Ser*. 2017;88:23–33. <https://doi.org/10.1159/000455210>.
139. Wang XX, Huang K, Tao FB. Placental microbiota and pregnancy. *Zhonghua Yu Fang Yi Xue Za Zhi*. 2019;53:633–7. <https://doi.org/10.3760/cma.j.issn.0253-9624.2019.06.018>.
140. Wassenaar TM, Panigrahi P. Is a foetus developing in a sterile environment? *Lett Appl Microbiol*. 2014;59:572–9. <https://doi.org/10.1111/lam.12334>.
141. Willyard C. Could baby's first bacteria take root before birth? *Nature*. 2018;553:264–6. <https://doi.org/10.1038/d41586-018-00664-8>.
142. Younes JA, et al. Women and their microbes: the unexpected friendship. *Trends Microbiol*. 2018;26:16–32. <https://doi.org/10.1016/j.tim.2017.07.008>.
143. Záhumienský J, Hederlingová J, Pšenková P. The importance of maternal microbiome in pregnancy. *Ceska Gynekol*. 2017;82:211–7.
144. Zakis DR, et al. The evidence for placental microbiome and its composition in healthy pregnancies: a systematic review. *J Reprod Immunol*. 2022;149:103455. <https://doi.org/10.1016/j.jri.2021.103455>.
145. Stout MJ, et al. Identification of intracellular bacteria in the basal plate of the human placenta in term and preterm gestations. *Am J Obstet Gynecol*. 2013;208(226):e221–7. <https://doi.org/10.1016/j.ajog.2013.01.018>.
146. Barnes RD, Bentovim A, Hensman S, Piesowicz AT. Care and observation of a germ-free neonate. *Arch Dis Child*. 1969;44:211–7. <https://doi.org/10.1136/adc.44.234.211>.
147. Kirk RG. "life in a germ-free world": isolating life from the laboratory animal to the bubble boy. *Bull Hist Med*. 2012;86:237–75. <https://doi.org/10.1353/bhm.2012.0028>.
148. Harris JW, Brown JH. The bacterial content of the uterus at cesarean section. *Am J Obstet Gynecol*. 1927;13:133–43.
149. Blanc WA. Pathways of fetal and early neonatal infection. *J Pediatr*. 1961;59:473–96. [https://doi.org/10.1016/s0022-3476\(61\)80232-1](https://doi.org/10.1016/s0022-3476(61)80232-1).
150. Romero R, et al. Intraamniotic infection and the onset of labor in preterm premature rupture of the membranes. *Am J Obstet Gynecol*. 1988;159:661–6. [https://doi.org/10.1016/s0002-9378\(88\)80030-9](https://doi.org/10.1016/s0002-9378(88)80030-9).
151. Culbreath K, et al. Validation and retrospective clinical evaluation of a quantitative 16S rRNA gene metagenomic sequencing assay for bacterial pathogen detection in body fluids. *J Mol Diagn*. 2019;21:913–23. <https://doi.org/10.1016/j.jmoldx.2019.05.002>.
152. Erb-Downward JR, et al. Critical relevance of stochastic effects on low-bacterial-biomass 16S rRNA gene analysis. *mBio*. 2020;11. <https://doi.org/10.1128/mbio.00258-20>.
153. Hu J, et al. Intrauterine growth restriction is associated with unique features of the reproductive microbiome. *Reprod Sci*. 2021;28:828–37. <https://doi.org/10.1007/s43032-020-00374-5>.
154. Griffiths SK, Campbell JP. Placental structure, function and drug transfer. *Continuing Education in Anaesthesia Critical Care & Pain*. 2015;15:84–9. <https://doi.org/10.1093/bjaceaccp/mku013>.
155. Ganai-Vonarburg SC, Hornef MW, Macpherson AJ. Microbial-host molecular exchange and its functional consequences in early mammalian life. *Science*. 2020;368:604–7. <https://doi.org/10.1126/science.aba0478>.
156. Motomura, K. et al. Intra-amniotic infection with *Ureaplasma parvum* causes preterm birth and neonatal mortality that are prevented by treatment with clarithromycin. *mBio* 11, e00797–e00720, doi:<https://doi.org/10.1128/mBio.00797-20> (2020).
157. Kikhney J, et al. Is *Ureaplasma* spp. the leading causative agent of acute chorioamnionitis in women with preterm birth? *Clin Microbiol Infect*. 2017;23:119 e111–119 e117. <https://doi.org/10.1016/j.cmi.2016.10.010>.
158. Stoll BJ, et al. Early onset neonatal Sepsis: the burden of group B streptococcal and *E. coli* disease continues. *PEDIATRICS*. 2011;127:817–26. <https://doi.org/10.1542/peds.2010-2217>.
159. Kim D, et al. Optimizing methods and dodging pitfalls in microbiome research. *Microbiome*. 2017;5. <https://doi.org/10.1186/s40168-017-0267-5>.
160. Costello M, et al. Characterization and remediation of sample index swaps by non-redundant dual indexing on massively parallel sequencing platforms. *BMC Genomics*. 2018;19:332. <https://doi.org/10.1186/s12864-018-4703-0>.
161. MacConaill LE, et al. Unique, dual-indexed sequencing adapters with UMIs effectively eliminate index cross-talk and significantly improve sensitivity of massively parallel sequencing. *BMC Genomics*. 2018;19:30. <https://doi.org/10.1186/s12864-017-4428-5>.
162. Minich JJ, et al. Quantifying and Understanding Well-to-Well Contamination in Microbiome Research. *mSystems*. 2019;4. <https://doi.org/10.1128/mSystems.00186-19>.
163. Berg G, et al. Microbiome definition re-visited: old concepts and new challenges. *Microbiome*. 2020;8. <https://doi.org/10.1186/s40168-020-00875-0>.
164. Langille MGI, Ravel J, Fricke WF. "Available upon request": not good enough for microbiome data! *Microbiome*. 2018;6. <https://doi.org/10.1186/s40168-017-0394-z>.
165. Schloss Patrick D, Ravel J. Identifying and overcoming threats to reproducibility, replicability, Robustness, and Generalizability in Microbiome Research *mBio*. 2018;9:e00525–18. <https://doi.org/10.1128/mBio.00525-18>.
166. Karstens L, et al. Controlling for contaminants in low biomass 16S rRNA gene sequencing experiments: Cold Spring Harbor Laboratory; 2018.
167. Clarridge JE. Impact of 16S rRNA gene sequence analysis for identification of bacteria on clinical microbiology and infectious diseases. *Clin Microbiol Rev*. 3rd, 2004;17:840–62, table of contents. <https://doi.org/10.1128/CMR.17.4.840-862.2004>.
168. Quast C, et al. The SILVA ribosomal RNA gene database project: improved data processing and web-based tools. *Nucleic Acids Res*. 2013;41:D590–6. <https://doi.org/10.1093/nar/gks1219>.
169. Caporaso JG, et al. Global patterns of 16S rRNA diversity at a depth of millions of sequences per sample. *Proc Natl Acad Sci*. 2011;108:4516. <https://doi.org/10.1073/pnas.1000080107>.
170. Villette R, et al. Refinement of 16S rRNA gene analysis for low biomass biospecimens. *Sci Rep*. 2021;11:10741. <https://doi.org/10.1038/s41598-021-90226-2>.
171. Bolyen E, et al. Reproducible, interactive, scalable and extensible microbiome data science using QIIME 2. *Nat Biotechnol*. 2019;37:852–7. <https://doi.org/10.1038/s41587-019-0209-9>.
172. GNU SED v. 4.7 (2018).
173. Callahan BJ, et al. DADA2: high-resolution sample inference from Illumina amplicon data. *Nat Methods*. 2016;13:581–3. <https://doi.org/10.1038/nmeth.3869>.
174. RCore Team. R: A language and environment for statistical computing. Vienna: R Foundation for Statistical Computing; 2019. <https://www.R-project.org/>.
175. Yilmaz P, et al. The SILVA and "all-species living tree project (LTP)" taxonomic frameworks. *Nucleic Acids Res*. 2014;42:D643–8. <https://doi.org/10.1093/nar/gkt1209>.
176. Wickham H, François R, Henry L, Müller K. dplyr: A Grammar of Data Manipulation. 2021. <https://dplyr.tidyverse.orghttps://github.com/tidyverse/dplyr>.
177. McMurdie PJ, Holmes S. Phyloseq: an R package for reproducible interactive analysis and graphics of microbiome census data. *PLoS One*. 2013;8:e61217. <https://doi.org/10.1371/journal.pone.0061217>.
178. Weiss S, et al. Normalization and microbial differential abundance strategies depend upon data characteristics. *Microbiome*. 2017;5:27. <https://doi.org/10.1186/s40168-017-0237-y>.
179. Gu Z, Eils R, Schlesner M. Complex heatmaps reveal patterns and correlations in multidimensional genomic data. *Bioinformatics*. 2016;32:2847–9. <https://doi.org/10.1093/bioinformatics/btw313>.
180. Oksanen, J. et al. vegan: Community Ecology Package. R package version 2.5–7. (2020).
181. Goslee SC, Urban DL. The ecodist package for dissimilarity-based analysis of Ecological data. *J Stat Softw*. 2007;22;http://hdl.handle.net/10.
182. McCune BP, Grace J. Analysis of Ecological Communities. 2002. [https://doi.org/10.1016/S0022-0981\(03\)00091-1](https://doi.org/10.1016/S0022-0981(03)00091-1).
183. Legendre P, Anderson MJ. Distance-based redundancy analysis: testing multispecies responses in multifactorial ecological experiments. *Ecol Monogr*. 1999;69:1–24. [https://doi.org/10.1890/0012-9615\(1999\)069\[0001:DBRATM\]2.0.CO;2](https://doi.org/10.1890/0012-9615(1999)069[0001:DBRATM]2.0.CO;2).
184. Martinez AP. PairwiseAdonis: Pairwise multilevel comparison using adonis. R package version 0.4. 2020.
185. Leon LJ, et al. A new biological and clinical resource for research into pregnancy complications: the baby bio Bank. *Placenta*. 2016;46:31–7. <https://doi.org/10.1016/j.placenta.2016.08.085>.

## Publisher's Note

Springer Nature remains neutral with regard to jurisdictional claims in published maps and institutional affiliations.