

RESEARCH ARTICLE

Open Access



# Gene expression analysis indicates reduced memory and cognitive functions in the hippocampus and increase in synaptic reorganization in the frontal cortex 3 weeks after MDMA administration in Dark Agouti rats

Peter Petschner<sup>1,2</sup>, Viola Tamasi<sup>3</sup>, Csaba Adori<sup>1,4</sup>, Eszter Kirilly<sup>1</sup>, Romeo D. Ando<sup>1</sup>, Laszlo Tothfalusi<sup>1</sup> and Gyorgy Bagdy<sup>1,2,5\*</sup>

## Abstract

**Background:** 3,4-methylenedioxymethamphetamine (MDMA, “ecstasy”) is a widely used entactogenic drug known to impair cognitive functions on the long-run. Both hippocampal and frontal cortical regions have well established roles in behavior, memory formation and other cognitive tasks and damage of these regions is associated with altered behavior and cognitive functions frequently described in otherwise healthy MDMA users. Meanwhile, in post-traumatic stress disorder (PTSD) patients seem to benefit from therapeutic application of the drug, where damage in hippocampal cue extinction may play a role. The aim of this study was to examine the hippocampus, frontal cortex and dorsal raphe of Dark Agouti rats with gene expression arrays (Illumina RatRef bead arrays) looking for possible mechanisms and new candidates contributing to the consequences of a single dose of MDMA (15 mg/kg) 3 weeks earlier.

**Results:** The number of differentially expressed genes in the hippocampus, frontal cortex and the dorsal raphe were 481, 155, and 15, respectively. Gene set enrichment analysis of the microarray data revealed reduced expression of ‘memory’ and ‘cognition’, ‘dendrite development’ and ‘regulation of synaptic plasticity’ gene sets in the hippocampus, parallel to the downregulation of CaMK II subunits, glutamate-, CB1 cannabinoid- and EphA4, EphA5, EphA6 receptors. Downregulated gene sets in the frontal cortex were related to protein synthesis, chromatin organization, transmembrane transport processes, while ‘dendrite development’, ‘regulation of synaptic plasticity’ and ‘positive regulation of synapse assembly’ gene sets were upregulated besides elevated levels of a CaMK II subunit and NMDA2B glutamate receptor. Changes in the dorsal raphe region were mild and in most cases not significant.

(Continued on next page)

\* Correspondence: [bag13638@iif.hu](mailto:bag13638@iif.hu)

<sup>1</sup>Department of Pharmacodynamics, Semmelweis University, Nagyvarad ter 4., Budapest H-1089, Hungary

<sup>2</sup>MTA-SE Neuropsychopharmacology & Neurochemistry Research Group, Nagyvarad ter 4., Budapest H-1089, Hungary

Full list of author information is available at the end of the article



(Continued from previous page)

**Conclusion:** The present data raise the possibility of new synapse formation / synaptic reorganization in the frontal cortex 3 weeks after a single neurotoxic dose of MDMA. In contrast, a prolonged depression of new neurite formation in the hippocampus is proposed by downregulations of members in long-term potentiation pathway and synaptic plasticity emphasizing the particular vulnerability of this brain region and proposing a mechanism responsible for cognitive problems in healthy individuals. At the same time, these results underpin benefits of MDMA in PTSD, where the drug may help memory extinction.

**Keywords:** Ecstasy, Endocannabinoid, CB1, RhoGTPase, Serotonin, Gene expression, Microarray, Eph receptors, CaMKII, NMDA2B

## Background

Ecstasy (3,4-methylenedioxyamphetamine, MDMA) is an amphetamine derivative widely abused for its euphoric and prosocial (entactogenic) effects in developed countries [1, 2]. The acute indirect monoaminergic agonist effects of MDMA are mainly mediated by an increase in serotonergic, noradrenergic and dopaminergic neurotransmission of the brain by reversing transmembrane transporter functions, which are normally responsible for the uptake of neurotransmitters from the synaptic cleft [1–3]. However, in the long-run, a decrease in serotonergic markers was reported in experimental animals and also in human users suggesting a long-term selective vulnerability of the serotonergic system [2, 4–6]. Functional deficits could also be observed in humans and in rodents, e.g. impaired decision making, sleep disturbances, increased anxiety and impulsivity levels, elevated aggression, learning and memory impairments and depression [2, 5, 7–10]. In addition to the selective damage observed in serotonergic neurons, MDMA may also cause more wide-spread changes, like production of toxic metabolites and free radicals or the disruption of local cerebral blood flow and glucose utilization, which might cause alterations in the nutrition-supply of neurons [4, 11–14].

The serotonergic projections in the mammalian brain, the primary targets of MDMA's effects in rats, originate from the raphe nuclei in the brainstem. Dorsal (DR) and median raphe nuclei innervate upper brain structures, including the frontal cortical regions and the hippocampus (HC) [15–18]. The frontal cortex (FC) plays major roles in risk evaluation, executive functioning, and working memory, while its malfunctions may be associated with neuropsychiatric diseases [19–22]. At the same time, HC has a pivotal role in contextual and hereby spatial memory formation [18, 23], thus, all of the latter regions are candidates for long-run functional consequences caused by MDMA.

Despite the observed serotonergic deficits, recent criticism of these studies raised the possibility of the therapeutic application of MDMA. The Multidisciplinary Association for Psychedelic Studies ([www.maps.org](http://www.maps.org)) is involved in studies investigating drug-assisted psychotherapy with MDMA in post-traumatic stress disorder (PTSD)

patients. As a result, Mithoefer et al. demonstrated an 83% clinical response rate to psychotherapy with tolerable side effects in the MDMA group compared with 21% in the control group [24, 25]. However, mechanisms responsible for these promising results in severe cases of PTSD remain to be elucidated in the different brain regions that are implicated in cognition and behavioral alterations.

Parallel to neuronal damage neuroprotective mechanisms can occur and, later in time, recovery processes also may begin. Heat-shock proteins (HSPs) can ameliorate the damage caused by cellular stress of different origin e.g. hyperthermia, ischemia, or excessive production of free radicals [26]. Elevated levels of HSP27 in the FC and HC 3 days after MDMA treatment was demonstrated by Adori et al. and this elevation persisted until at least 7 days in the HC but normalized in the FC by this time [4]. Brain-derived neurotrophic factor (BDNF), a well-characterized member of neurotrophic factors, is involved in several processes maintaining central nervous system (CNS) functions like dendritic arborization, synaptogenesis and activity-dependent potentiation (for review see [27]). A study elucidating MDMA's effects on BDNF mRNA expression reported ever increasing elevations in FC up to 7 days after MDMA administration while in the HC a decrease was evident [28]. Investigation of MDMA's long-term effects revealed that in the parietal cortex BDNF protein levels peaked at 8 weeks after an initial decline but in the HC no significant change could be reported [29]. Differences were also demonstrated on the long-run between HC and temporal cortex in tryptophan hydroxylase levels, the 5-HT synthesis enzyme, following binge or single-dose administration of MDMA [30]. All of the latter results suggest different recovery capacities of the HC and FC, but the detailed biochemical mechanisms responsible for these differences remained so far less investigated at later time points. We speculated that these consequences might be already visible at 21 days following a single dose of MDMA thus we performed our analysis 3 weeks after drug administration to investigate both recovery processes and downstream mediators of already mentioned functional effects at this time point [5, 7].

Studies examining transcriptional changes following MDMA administration are scarce, only few reports evaluated alterations in mRNA levels of genes which were assumed to be related to MDMA effects (see e.g. [5, 28, 31–33]).

Thus, the aim of this study was to identify downstream transcriptional consequences of MDMA (which may be related to functional alterations of the drug) and to find possible new targets of regulatory mechanisms by using large-scale gene expression profiling in the HC, FC, and DR regions of Dark Agouti (DA) rats 21 days after a single-dose MDMA administration. Additionally, we also addressed whether signs of functional recovery on the molecular level can occur in the FC and HC and if so, whether they differ in quality or quantity in these two regions. In order to achieve our goals we used a dosage regimen of 15 mg/kg in the DA rat strain, which was utilized for the following reasons: 1) it is a commonly used strain in MDMA research, 2) DA rats are more similar to each other compared to other rat strains, thus, on a genome-wide scale our results remain more comparable with other experiments, 3) we were able to compare current results with those from our previous experiments with the same strain and same dosage regimen.

## Results

### General overview of gene expression alterations

Comparison of the gene expression profiles showed 615 differentially expressed genes in the MDMA treated group compared to the saline control (minimum probability of positive log ratio [MinPplr] < 0.001). From 155 significant genes in the FC region 66 were up- and 89 downregulated. In the HC region 481 genes showed altered expression, 171 and 310 genes were up- or downregulated, respectively. Only 14 unique genes were altered in the DR region, 11 showed elevated expression and the remaining 3 showed a decrease compared to the control group. All genes emphasized in the chapters below were selected by individual considerations of MDMA's known effects and related literature data. For full results see Additional file 1: Table S1.

The gene set enrichment analysis (GSEA) revealed 55, 18 and 1 differentially regulated gene sets in the FC, HC and DR regions, respectively.

### Frontal cortex

#### Differentially expressed genes

MDMA caused a significant overexpression of long-term potentiation (LTP) pathway genes (*Camk2g* and *Camk1g*) and the ionotropic glutamate receptor, NMDA2B (*Grin2b*). The alpha subunit of the heat shock protein 1 (*Hspca*, HSP90 $\alpha$ ) and heat shock factor 2 (*Hsf2*) were downregulated, similarly to high-affinity glial glutamate transporter (*Slc1a3*) (See Table 1 and Additional file 1: Table S1 for all significantly altered genes).

### Gene set enrichment analysis

Altogether 55 gene sets were differentially enriched in the FC after the single-dose MDMA treatment, containing both our literature-based, individually chosen (Additional file 2: Table S2) and Msig DB C5 gene sets. Additionally, we used GSEA network analysis on significantly enriched GO terms to determine biologically relevant processes shown in Table 2.

The biological process with the most prominent alterations contained 21 significantly dysregulated gene sets related to protein synthesis and protein localization within the neurons, and 10 significantly enriched gene sets were involved in transport processes. All of these 31 gene sets were, without exception, downregulated in the FC region, together with gene sets responsible for chromatin maintenance. The dendrite and synapse development gene sets were upregulated 3 weeks after MDMA administration (Table 2, in all cases,  $p < 0.05$ , and FDR < 0.25, see Additional file 3: Table S3 for detailed and full results).

We also used in silico GSEA network analysis (Fig. 1) on significantly enriched gene ontology (GO) terms, which represents functional connectivity and was applied to determine biologically relevant processes shown in Table 2.

### Hippocampus

#### Differentially expressed genes

Changes in major hippocampal neuroplasticity related pathways included reductions in glutamatergic GRIN2A (*Grin2a*) and AMPA3 (*Gria3*) mRNA levels, parallel with downregulations in a variety of LTP pathway members, like calcium/calmodulin dependent protein kinase (CaMK) II genes (*Camk2g*, *Camk2b*), kalirin, (*Kalrn*) and EphA4 (*LOC316539*), *Epha5* and *Epha6* receptors, members of ephrin signaling. Accordingly, an inhibitor of the CaMK II (*Camk2n2*) was upregulated along with a GABA-A receptor subunit (*Gabre*). The mRNA levels of *Atp2b3*, *Atp2b1* calcium transporting ATP-ases and *Slc5a3*, an inositol transporter was also decreased. Some of the voltage-gated potassium transporter genes (*Kcnd2*, *Kcnc2*) were also downregulated and type 1 cannabinoid receptor (*Cnr1*, CB1) showed decreased levels in HC, too. (See Table 1 and Additional file 1: Table S1 for all significantly altered genes).

### Gene set enrichment analysis

The GSEA analysis revealed altogether 18 differentially represented gene sets in the HC region, including both the Msig DB C5 gene set database and individually chosen gene sets based on the literature (see Additional file 2: Table S2). Two particularly important gene sets, 'memory' [GO:0007613] and 'cognition' [GO:0050890] were underexpressed in HC samples and multiple gene sets related to the molecular function of kinases were also downregulated. Other, negatively influenced processes included synaptic plasticity

**Table 1** Selection of significantly altered genes by single-dose MDMA treatment in the different brain regions

		MinPplr	Fold Change (on log <sub>2</sub> scale)
Frontal Cortex			
<i>Camk2g</i>	Calcium/calmodulin-dependent protein kinase II gamma	0.000127	0.900
<i>Camk1g</i>	Calcium/calmodulin-dependent protein kinase I gamma	0.000174	0.383
<i>Grin2b</i>	Glutamate receptor, ionotropic, NMDA2B (Grin2b)	0.000395	0.448
<i>Hspca</i>	Heat shock protein 90a	0.000677	-0.398
<i>Slc1a3</i>	Solute carrier family 1 (glial high affinity glutamate transporter), member 3	0.000417	-0.724
Hippocampus			
<i>Gria3</i>	Glutamate receptor, ionotropic, AMPA3	5.23E-05	-0.916
<i>Grin2a</i>	Glutamate receptor, ionotropic, N-methyl D-aspartate 2A	5.42E-08	-1.610
<i>Camk2g</i>	Calcium/calmodulin-dependent protein kinase II gamma	1.46E-08	-1.451
<i>Camk2b</i>	Calcium/calmodulin-dependent protein kinase II beta	1.02E-08	-1.751
<i>Kalrn</i>	Kalirin, RhoGEF kinase	2.69E-05	-0.419
<i>LOC316539</i>	Eph receptor A4	1.82E-05	-0.729
<i>Epha5</i>	Eph receptor A5	3.29E-09	-1.065
<i>Epha6</i>	Eph receptor A6	7.39E-05	-0.484
<i>Camk2n2</i>	Calcium/calmodulin-dependent protein kinase II inhibitor 2	3.44E-06	0.345
<i>Gabre</i>	Gamma-aminobutyric acid A receptor, epsilon	0.000525	0.268
<i>Atp2b3</i>	ATPase, Ca <sup>++</sup> transporting, plasma membrane 3	2.41E-12	-0.567
<i>Atp2b1</i>	ATPase, Ca <sup>++</sup> transporting, plasma membrane 1	1.16E-05	-0.863
<i>Slc5a3</i>	Solute carrier family 5 (inositol transporters), member 3	9.94E-10	-1.356
<i>Kcnd2</i>	Potassium voltage gated channel, Shal-related family, member 2	7.56E-07	-1.476
<i>Kcnc2</i>	Potassium voltage gated channel, Shaw-related subfamily, member 2	6.11E-07	-0.905
<i>Cnr1</i>	Cannabinoid receptor 1	3.1E-06	-0.793
Dorsal Raphe			
<i>Slc6a5</i>	Solute carrier family 6 (neurotransmitter transporter, glycine), member 5	0.000153	1.143
<i>Hsd11b1</i>	Hydroxysteroid 11-beta dehydrogenase 1	1.19E-08	0.450
<i>Dao1</i>	D-amino acid oxidase	0.000384	0.451

This table summarizes the genes significantly (minimum probability of positive log ratio (MinPplr) < 0.001) altered in the frontal cortex (FC), hippocampus (HC) and dorsal raphe (DR) of Dark Agouti (DA) rats after a single-dose 3,4-methylenedioxymethamphetamine (MDMA) treatment (15 mg/kg, intraperitoneal) 3 weeks earlier. The genes were selected based on literature data and individual considerations, for all the significantly changed genes see Additional file 1: Table S1. See text for further details

**Table 2** Biologically Relevant Processes with Enriched Gene Sets in the Frontal Cortical Region

Biological Process	Number of Enriched Gene Sets Related to the Process	Direction
Protein synthesis and localization	21	
Transmembrane transport	10	
Nucleocytoplasmic transport	7	
Cell growth	6	
Others	4	
Chromatin maintenance	3	
Dendrite and synapse development	3	
Oxidoreductase activity	2	

This table summarizes the biological processes significantly altered in the frontal cortex (FC) of Dark Agouti (DA) rats after a single-dose 3,4-methylenedioxymethamphetamine (MDMA) treatment (15 mg/kg, intraperitoneal) 3 weeks earlier. The processes were created based on the network analysis of gene set enrichment analysis and individual considerations. All significantly enriched GO terms are included in one of the processes. Downward arrows represent down-, upward arrows represent upregulations. In some of the biological processes both up- and downregulated gene sets were present (mixed up- and downward arrows). See text for further details

and dendrite / synapse development and the regulation of glutamatergic neurotransmission (Table 3, in all cases,  $p < 0.05$ , and false discovery rate (FDR)  $< 0.25$ , see Additional file 3: Table S3 for detailed and full results). Figure 2 summarizes the main findings of the gene set analyses in a network form based on the GSEA network analysis.

### Dorsal raphe

#### Differentially expressed genes

In the DR region the glycine neurotransmitter transporter (*Slc6a5*), the D-amino acid oxidase (*Dao1*) and the 11-beta-hydroxysteroid dehydrogenase (*Hsd11b1*, 11 $\beta$ -HSD1) genes were upregulated among others (See Table 1 and Additional file 1: Table S1 for all significantly altered genes).

#### Gene set enrichment analysis

In the region only one gene set, namely ‘caspase activation’ [GO:0006919] was significantly downregulated after the single-dose MDMA treatment. No upregulated gene sets could be observed (in all cases  $p < 0.05$ , and FDR  $< 0.25$ ). The full results of the GSEA analysis in the DR region are shown in Additional file 3: Table S3.

#### Heatmap analysis

The heatmap (Fig. 3) shows genes after two-way hierarchical clustering comparing their expression levels among all three regions. It provides a different insight into the transcriptional changes after MDMA treatment. In the HC region nearly all of the genes were downregulated. In contrast, most of those genes that were downregulated in the HC were found to be upregulated in the

FC, suggesting marked differences between the two regions. Changes in the DR were scant independently of alterations in the other two regions.

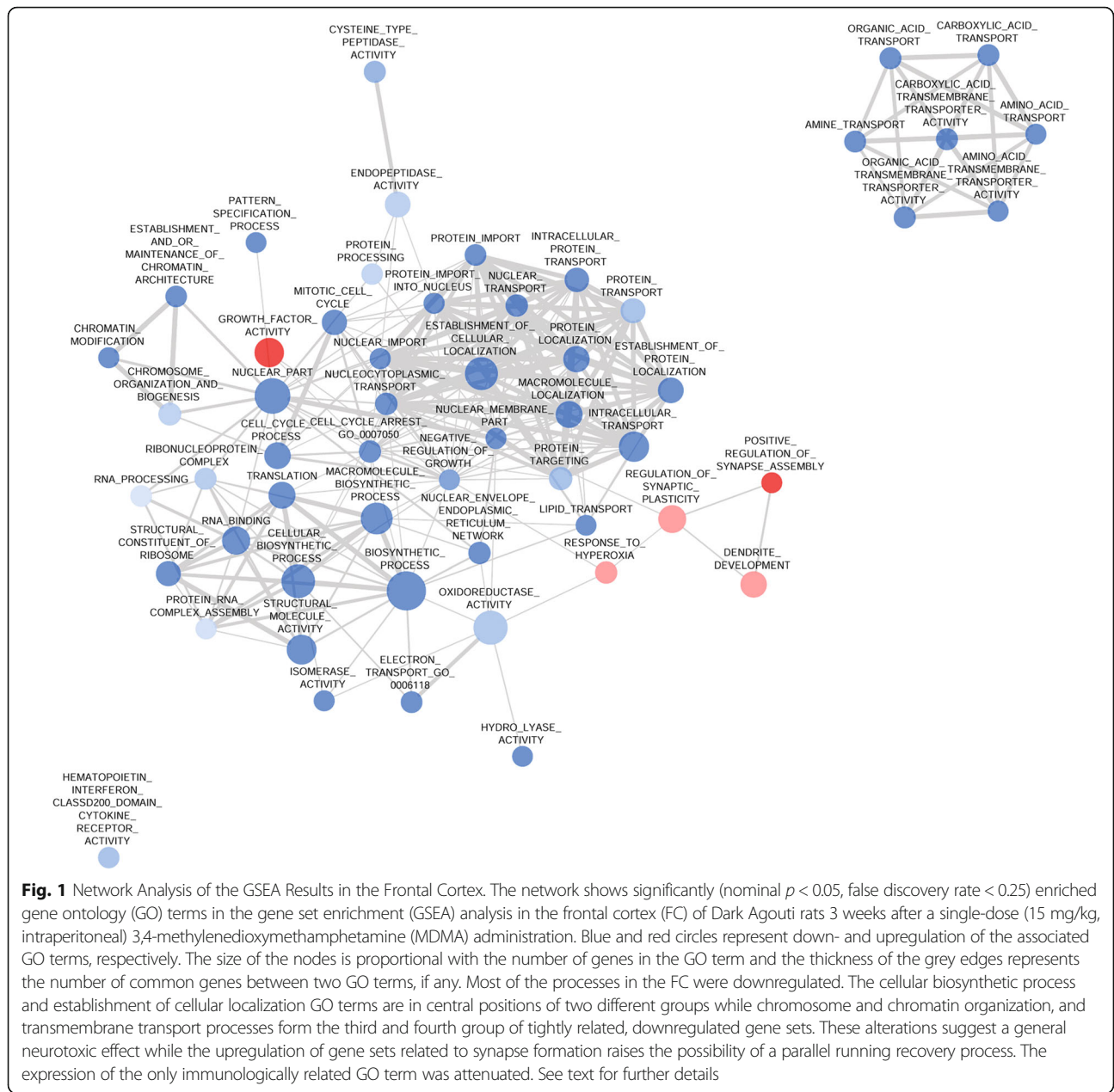
### Discussion

In this study we evaluated the transcriptional consequences 3 weeks after a single neurotoxic dose of MDMA in DA rats with gene expression arrays in three different brain areas. The FC region exhibits wide-scale negative changes in basic anabolic and transport processes and the upregulations of the ‘dendrite development’, ‘regulation of synaptic plasticity’ and ‘positive regulation of synapse assembly’ gene sets suggest a partial new synapse formation/synaptic reorganization in this region on the transcriptional level. MDMA’s effects indicate alterations in cognition and memory related processes with the possible involvement of the LTP pathway, CB1 and Eph receptors in the HC. These differences between the FC and HC point to markedly different transcriptional responses of these two brain regions 3 weeks after a single dose MDMA administration.

### Frontal cortex

While alterations in expression of 5-HT markers in cortical regions are well-defined, studies examining other effects of MDMA on gene expression are scarce. Thiriet et al. examined 1176, toxicology-related genes in adult Sprague-Dawley rats and followed expression patterns up to 7 days after a 20 mg/kg single-dose MDMA administration [33]. They found nerve growth factor alterations and suggested cytoskeletal reorganization while in another study, Fernandez-Castillo et al. emphasized neuroinflammatory responses in MDMA-effects 8 h after repeated-administration in adult mice [32]. Martinez-Turillas et al. investigated BDNF augmentations in the FC region of Wistar rats up to 7 days after drug administration [28]. In our present study we examined gene expression patterns longer time (3 weeks) after a single neurotoxic dose of MDMA in the DA rat strain and found no overlap with previous transcriptomic investigations probably because of the different time point examined. We report wide-scale downregulation of genes involved in chromatin organization, nucleocytoplasmic transport, ribosome-related functions, protein synthesis/folding and transmembrane transport processes in the FC region (Table 2). It seems reasonable that the observed changes are long-term consequences of the acute general neurotoxic processes, like toxic metabolite formation, hyperthermic effect or free radical production or impairment in the auto-regulation of cerebral blood flow [4, 11–14, 34–38]. The latter is even further supported by the upregulation of the response to hyperoxia gene set.

Motor regions in the FC are targets of thalamic inputs and contribute to motor system functions [39]. Studies in DA rats with the same MDMA administration



protocol like in the recent experiment indicated chronic changes in motor activity [40–42]. Additionally, Karageorgiou et al. reported alterations in right supplementary motor area activation in human MDMA users on fMRI recordings [43]. Our results might reflect molecular changes in the FC that may relate to these observations on a functional level.

As from another functional perspective FC and prefrontal cortical regions (PFC) are not only responsible for motor functions, but are also closely related to different cognitive tasks, e.g. working memory, goal-directed behavior, and executive functions in rats [20, 44–46]. In

our experiment FC samples contained regions from primary and secondary (supportive) motor cortices principally and likely some parts of PFC [46]. Thus, inhibition of certain biosynthetic processes found in the present study might be distinctly involved in the cognitive decline of heavy MDMA users.

We have previously demonstrated that HSP90 staining is not influenced by MDMA either 3 days or 1 week after administration in DA rats with the same administration protocol [4]. The downregulation of *Hspca* gene mRNA encoding for HSP90 $\alpha$ , therefore, is surprising and may indicate changes later in time that might be

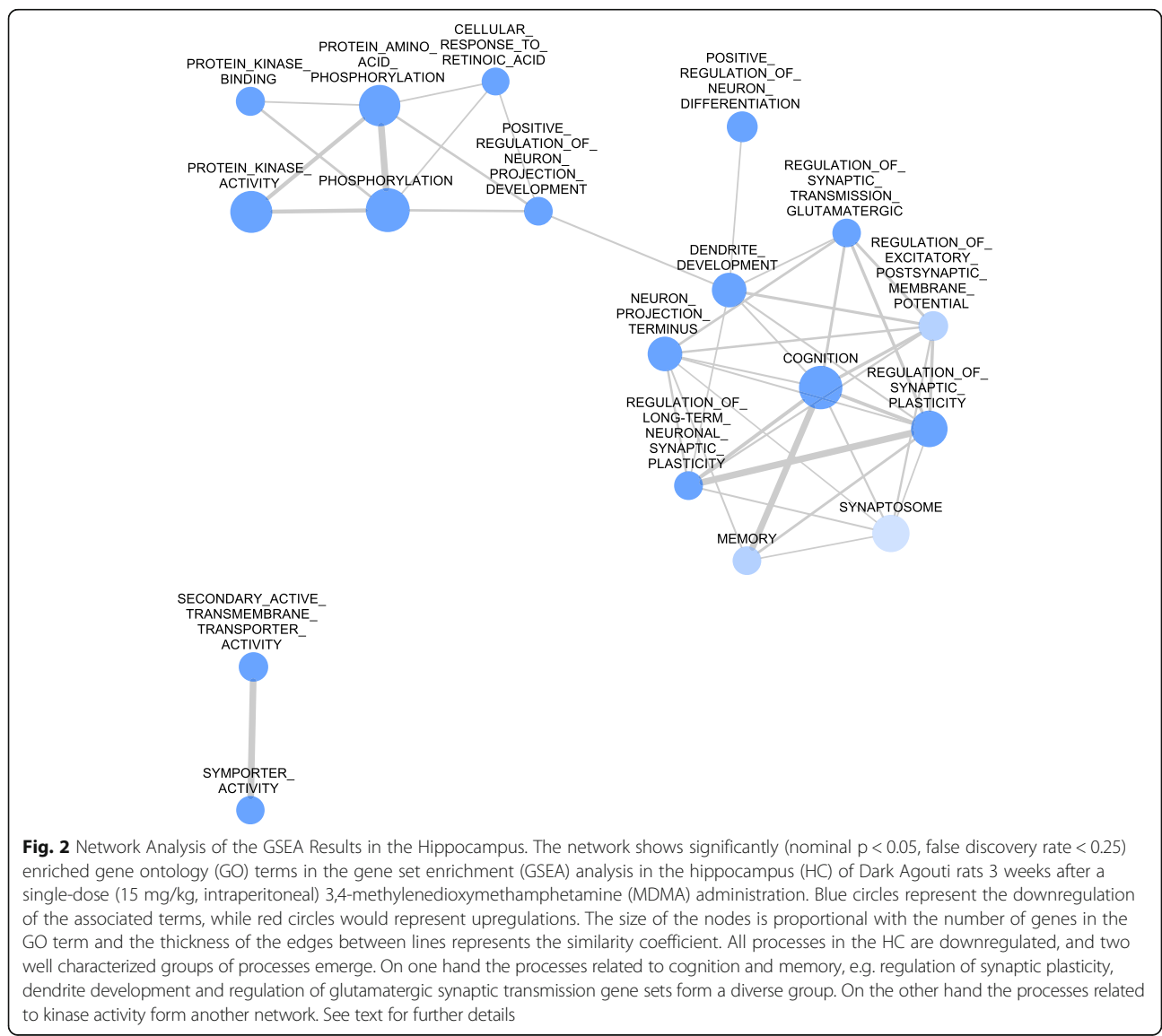
**Table 3** Biologically Relevant Processes with Enriched Gene Sets in the Hippocampal Region

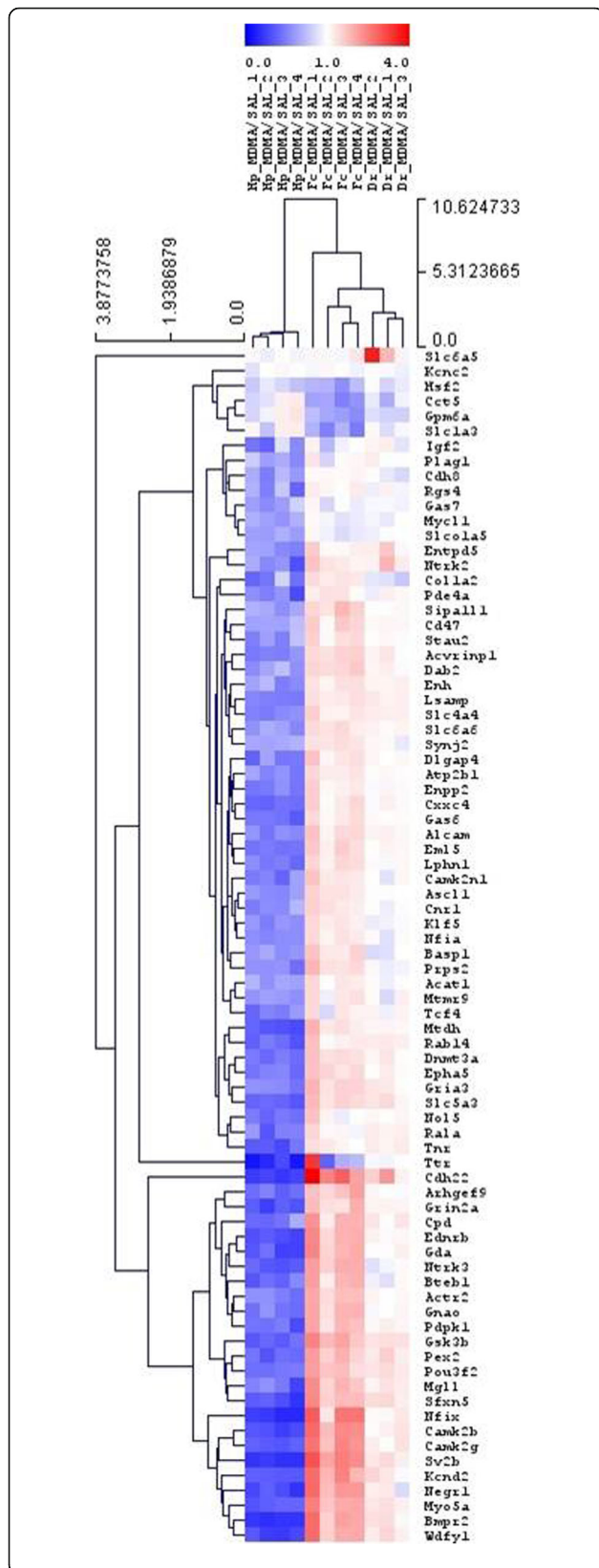
Biological Process	Number of Enriched Gene Sets Related to the Term	Direction
Protein Phosphorylation	4	
Dendrite and synapse development	4	
Synaptic plasticity	4	
Transmembrane transport	2	
Others	2	
Memory, cognition	2	

This table summarizes the biological processes significantly altered in the hippocampus of Dark Agouti rats after a single-dose 3,4-methylenedioxyamphetamine (MDMA) treatment (15 mg/kg, intraperitoneal) 3 weeks earlier. The processes were created based on the network analysis of gene set enrichment analysis and individual considerations. All significantly enriched GO terms are included in one of the processes. Downward arrows represent downregulations. See text for further details

triggered by *Hsf2* (also downregulated in the present experiment) able to bind promoter regions of *Hspca* [47]. Nevertheless, further studies are definitely required to unravel the exact roles of these factors in the FC of DA rats after single-dose MDMA administration.

A possible recovery mechanism on a network level marked by the upregulation of LTP members, like CaMK subunits *Camk2g* and *Camk1g* and the ionotropic glutamate receptor, NMDA2B (*Grin2b*), is suggested. Activation of CaMK II is both necessary and sufficient for LTP induction under physiological circumstances and it remains one of the most important factors in this process and, hence, in cognition itself [48]. The preceding Ca-influx which normally activates CaMK II is triggered by activation of NMDA-type glutamate receptors and, while different NMDA subunits may regulate different behaviors, all are involved in LTP [48, 49]. Physiologically, after elevations





**Fig. 3** Two-way hierarchical clustering of representative genes selected from all three brain regions. Genes modulated more than 1.5 or less than 0.5 are clustered (Euclidean distance, average linkage) into the heatmap from all three brain regions (hippocampus [HC], frontal cortex [FC] and the dorsal raphe [DR]) of Dark Agouti rats 3 weeks after a single-dose of (15 mg/kg, intraperitoneal) MDMA. The brain regions are unequivocally separated by this analysis, suggesting markedly different effects of MDMA in the different regions. See text for further details

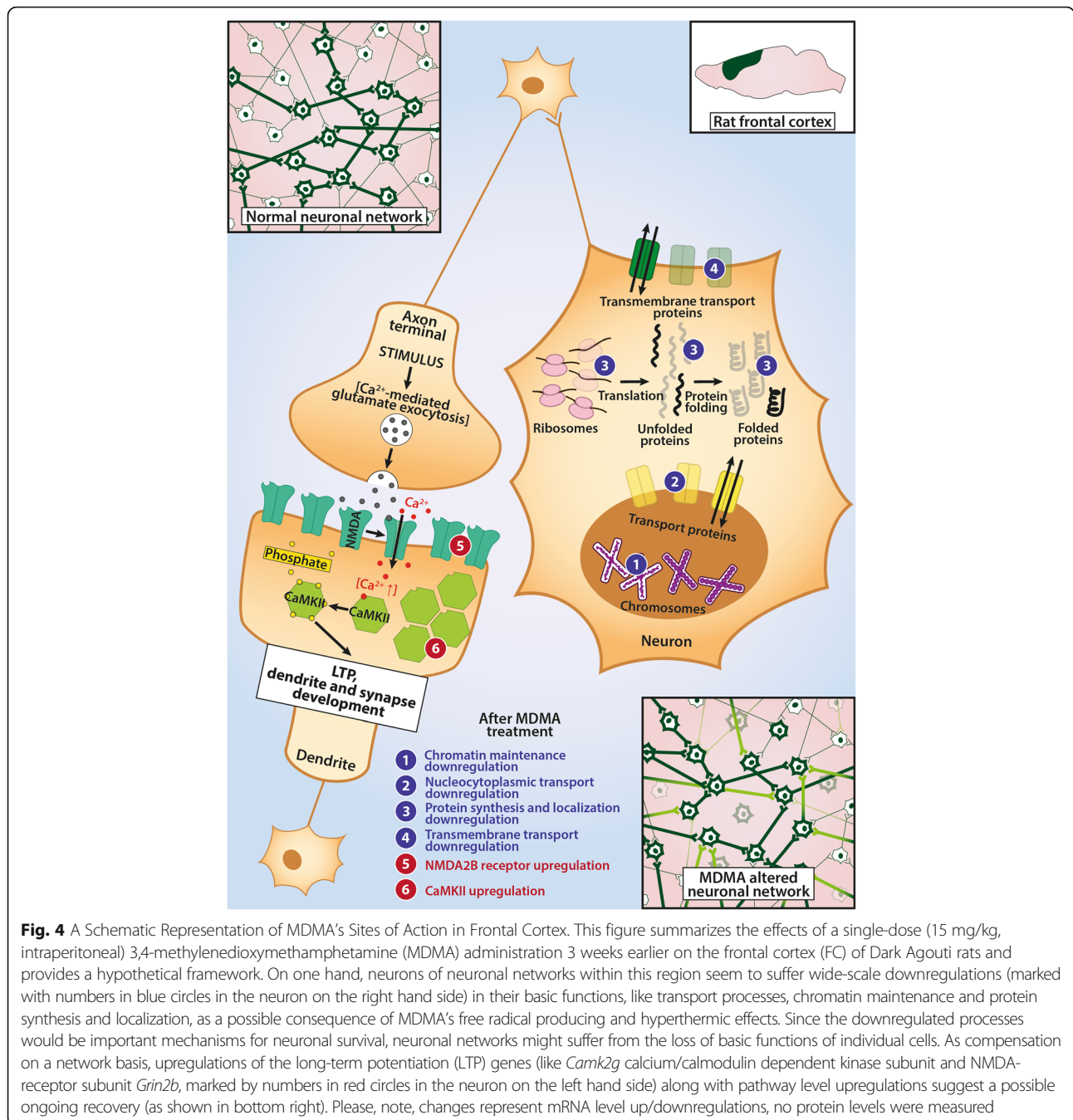
in intracellular  $Ca^{2+}$  concentrations, which render it into active conformation, CaMK II phosphorylates multiple targets within the neurons on their serine/threonine residues and ultimately recruits AMPA receptors into post-synaptic dendritic spine membranes accompanied by morphological changes of these membranes through guanine nucleotide exchange factors that activate Rho GTPases (RhoGEFs) [48]. According to our recent understanding, through these steps synapses are markedly sensitized for glutamate-induced depolarization, which is, in essence, LTP and is considered as the basic mechanism of cognitive functions on neuronal levels. LTP, while mainly associated with HC has important roles also in motor regions, PFC, and neocortical regions and it influences skill learning and executive functions alike [50, 51]. Our results indicate that the frontal cortical region reacts differently to a previous, single-dose MDMA challenge than HC in DA rats (see in Hippocampus chapter). While individual cells may show impaired biosynthetic processes, these alterations seem to be compensated on a network level by the possible strengthening of neuronal connections, a mechanism which provides the possibility of functional restoration following injuries of the central nervous system [52]. These conclusions on the gene level are partially underpinned by the GSEA, since gene sets related to dendrite and synapse development were upregulated. While connectivity may be enhanced, indication for enhanced LTP is provided only on a gene level (elevated *Camk2g*, *Camk1g* and *Grin2b*), and we have to note that gene sets could not unequivocally confirm such processes.

In summary, the downregulation of almost 50 gene sets related to biosynthetic processes in the FC may reflect consequences of general neurotoxic effects not related to specific pathways (see Fig. 4). At the same time, the upregulation of the gene set responsible for dendrite development in this brain region may point to a starting recovery process/synaptic reorganization and could be a sign of a compensatory mechanism ameliorating MDMA's acute effects 3 weeks after the administration in DA rats.

**Hippocampus**

In the HC region we report downregulations in CaMK II subunits, *Camk2g* and *Camk2b* and upregulation of an inhibitor of CaMKs parallel with decreased level of a





regulatory subunit of NMDA glutamate receptors, *Grin2a*. Moyano et al. observed attenuated levels of CaMK II after 1 week cessation following an MDMA treatment protocol upon a repeated administration, but could not demonstrate altered levels of CaMK II or NMDA-receptor subunits without the acute challenge, hence, concluded that MDMA cannot cause chronic alterations in CaMK II or NMDA-subunit levels in the HC [53]. We show that later, namely after 3 weeks, CaMK II and *Grin2a* show decreased mRNA levels. Chronic downregulations of CaMK

II and an NMDA channel mRNAs may mark central alterations that can ultimately lead to losses in cognitive performance via the disruption of LTP. In the present study decreased expression of Ca-transporters, like *Atp2b3* and *Atp2b1*, further support the notion of altered calcium homeostasis that may affect CaMK II activation, while downstream effectors of the LTP pathway, AMPA3 and kalirin, a RhoGEF kinase, were also significantly downregulated. Taken together, besides CaMK II and *Grin2a*, mRNA levels of several components necessary for proper

LTP are negatively influenced 3 weeks after single-dose MDMA administration in the used rat strain. Furthermore, results from GSEA support the gene level data showing downregulation of protein phosphorylation, memory, cognition, synaptic plasticity and synapse/dendrite development gene sets, correlates of the mRNA alterations on a pathway level (though LTP pathway directly remained non-significant, see Fig. 2 and Additional file 3: Table S3). Thereby, HC shows a contrast to FC, where some genes of the LTP pathway showed opposite changes. Such differences between the HC and FC suggest that different memory types with different relative involvement of these regions may show different responses to the drug. Indeed, a functional study investigating such differences following binge administration of MDMA, reported rats learning working-memory related tasks (mainly FC mediated) faster on the long-run compared to spatial reference memory (mainly HC mediated) in an 8-arm radial maze challenge [54]. In summary, these results indicate that the MDMA-caused lasting cognitive impairments in humans and experimental animals [2, 5, 8–10, 55, 56] may be partially consequences of transcriptional downregulations in essential elements of the CaMK II-mediated pathway in the HC at a chronic time point after use.

In this region we also show decreased mRNA levels of EphA4, EphA5 and EphA6 receptors. These membrane-anchored receptors only exert their actions upon direct cell-cell contact and, after binding, both the receptor and the similarly membrane-anchored ligand start intracellular signaling processes [57]. Eph receptors are suggested to be involved in the development and maintenance of HC and its cognitive functions through modulating synapse formation and glutamatergic LTP [58]. Simón et al. demonstrated that reductions in HC EphA4 levels preceded the development of attenuated object recognition and spatial memory in a mouse model of Alzheimer-disease [59, 60], while *Epha6* KO mice showed impaired memory using a fear conditioning training paradigm [61]. Although in comparison with EphA4 and EphA6, EphA5 is weakly labelled under physiological conditions in the HC, it may also be necessary for proper neuronal projections in the region [62].

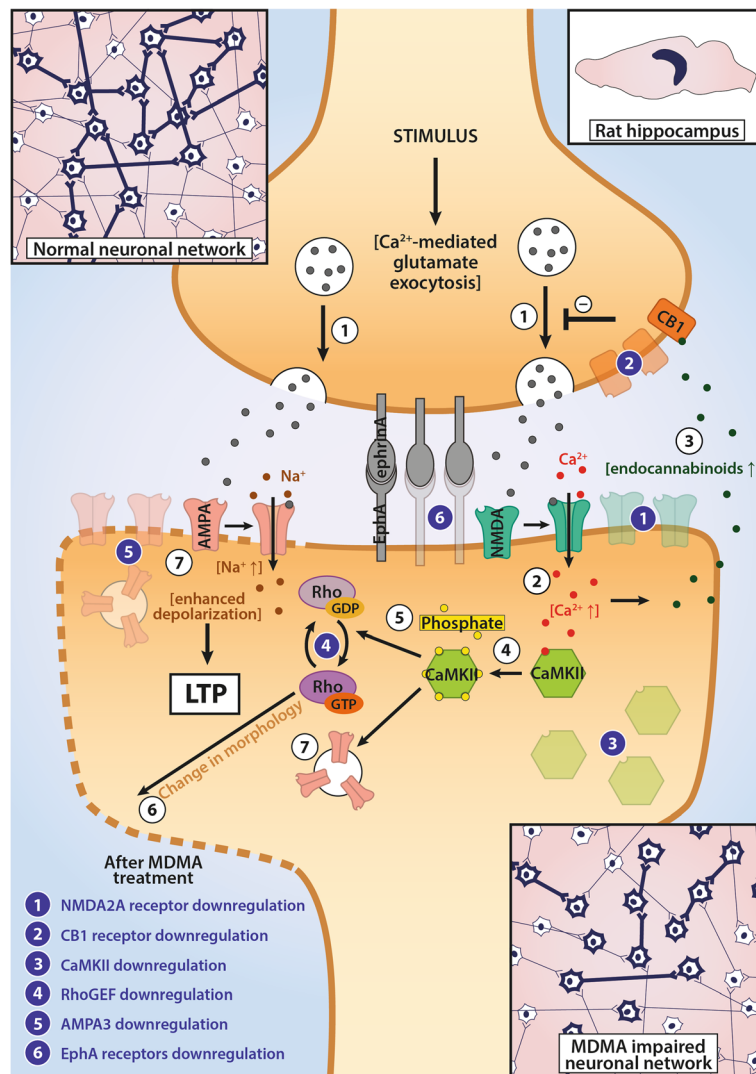
Another gene downregulated in the current setup was the CB1 receptor. Nawata et al. also investigated CB1 receptor mRNA levels in the HC regions of mice up to 7 days following the cessation from repeated MDMA administration and they reported an increase 7 days, but not 1 day after last treatment [56]. CB1 receptors are important components in suppression of excitatory impulses in the HC through inhibition of presynaptic neurotransmitter release [63]. It is accepted that suppression of synaptic glutamate levels in the HC by cannabinoid agonists cause impairments in cognitive functions and, accordingly, antagonists may improve them [64]. Indeed, Nawata et al. also showed that a

cannabinoid antagonist was able to ameliorate the MDMA induced cognitive impairments at 7 days after withdrawal from the drug suggesting that elevated CB1 levels may be important in this effect [56]. Here we report downregulations, which suggest alternating temporal patterns or species differences of this receptor after MDMA use and, hence, application of CB1 antagonists at later time points may have different consequences, at least in DA rats. Nevertheless, increased intracellular  $Ca^{2+}$  levels, a result of NMDA channel activation could directly induce endocannabinoid release in HC neurons and, thus, one may speculate that decreased  $Ca^{2+}$  levels (as a consequence of *Grin2a* downregulation) might be the sources for downregulations of CB1 receptors observed in the current paradigm [65].

Potassium channels play important roles in the maintenance of intracellular ion concentrations, the excitability of the neurons and in LTP, where long-term adaptations in excitability occur. The *Kcnd2* gene encodes for a Shal-related potassium channel, Kv4.2, which is responsible for A-type  $K^+$  currents in hippocampal pyramidal neurons [66]. Varga et al. demonstrated that CaMK II activation induces elevations in functional cellular Kv4.2 proteins, thus, the downregulations of Kv4.2 mRNA in our study might reflect the attenuation in CaMK II functions discussed previously [67], along with decreased *Kcnc2* levels encoding the Kv3.1b potassium channel [68].

As we have only investigated one dose of MDMA and only at 3-weeks after administration, our results are less generalizable. However, we would like to point to a possible connection between our results on a transcriptomic level and the recent successful clinical application of the drug in combination with psychotherapy in PTSD patients [25]. While in otherwise healthy human individuals the alterations discussed above can be detrimental on cognitive functions, in disease, loss of negative memory clues may be beneficial [69]. In PTSD it has been long proposed that dysfunctions in memory extinction may be involved in the maintenance of the symptomatology [70]. If our results can be extrapolated on an interspecies scale and onto the protein level by subsequent confirmatory analyses, they may represent molecular mechanisms through which MDMA may induce extinction of negative clues in HC circuitries and could benefit PTSD patients.

Taken together, MDMA, 3 weeks after its use in a single dose, caused decreased mRNA levels of major components of the LTP pathway, ephrin signaling and CB1 receptors accompanied by downregulations in memory, cognition, synaptic plasticity and synapse/dendrite development gene sets in HC of DA rats (Fig. 5). Our results indicate that a central region of cognitive functioning, the HC, may be particularly vulnerable for MDMA's toxic effects in DA rats.



**Fig. 5** A Schematic Representation of MDMA's Sites of Action in Hippocampus. This figure summarizes the effects of a single-dose (15 mg/kg, intraperitoneal) of 3,4-methylenedioxymethamphetamine (MDMA) 3 weeks earlier on hippocampal neurons in Dark Agouti rats. White circles represent molecular events explained in this legend. Based on current knowledge, neuronal long-term potentiation (LTP) would be initiated by glutamate release from synaptic vesicles (1) and their binding to NMDA-type glutamate receptors, which after activated, let Ca<sup>2+</sup> flow into the cells (2). The elevated intracellular Ca-levels, on one hand, cause endocannabinoid synthesis acting as a negative feedback mechanism via cannabinoid 1 (CB1) receptors (3), while on the other hand, activate calcium/calmodulin dependent kinase II (CaMK II) and induce autoactivation of the enzyme (4). The active CaMK II molecules phosphorylate intracellular targets, thereby activating Rho GTPases (5) to induce changes in synaptic membrane morphology (6) and, thereby, let AMPA glutamate receptors be expressed in postsynaptic membranes (7). The newly recruited AMPA receptors may react to presynaptic glutamate release causing elevated excitability upon repeated stimuli and a strengthening of synaptic transmission. Downregulations caused by the single-dose administration are marked by blue numbers and show that besides of decreased mRNA levels found in our study in the subunits of the LTP-members (which was supported by downregulations in regulation of synaptic plasticity, cognition and memory gene sets), the drug also induced downregulation in Eph receptors, which may be responsible for direct cell-cell contacts in synapses. These changes indicate that the connectivity and thus, hippocampal neuronal network functions might be damaged as a consequence of the administration of the drug. Please, note, changes represent mRNA level up/downregulations, no protein levels were measured. See text for further details

### Dorsal raphe

The changes in the DR region were mild in line with our previous results suggesting that MDMA-caused damage to these neurons are restricted to serotonergic axon terminals instead of neuronal cell bodies directly [71]. The

caspase activation gene set significantly changed in the present study was not supported by individual genes, or other gene sets related to apoptotic processes. The up-regulation in 11β-HSD1 mRNA level might suggest a possible role of the hypothalamic-pituitary-adrenal axis

and glucocorticoids in MDMA's long-term consequences, an effect also proposed by others [72, 73]. 11 $\beta$ -HSD1 is responsible for the conversion of glucocorticoids into active form. Chronically elevated glucocorticoids were shown to be involved in aging and cognitive decline and it has been shown that 11 $\beta$ -HSD1 may induce such processes [74]. Since its expression was confirmed in the brainstem [75], 11 $\beta$ -HSD1 may be an interesting topic for further research in the region. Otherwise, the DR region seems to be mostly unaffected 3 weeks after a single-dose of MDMA administration in DA rats.

### Limitations

In the present study we have not elucidated the temporal patterns of the mRNAs. Further studies are needed addressing the time course of described alterations to elicit causative relations of these transcriptional processes in detail, especially, since some alterations in HC seem to be highly time-dependent and may influence therapeutic interventions of MDMA-induced cognitive changes.

We could not confirm the decreased expression of serotonergic markers in the present study. Both serotonin transporter and tryptophan hydroxylase mRNA levels were unaltered in the treatment group, which is in conflict with previous results: well established prolonged serotonergic depletion and decreased expression of serotonergic markers in both protein and mRNA levels after MDMA-treatment was demonstrated by our group earlier [4, 5]. Here we can assume that collection of DR samples was not precise enough and as we did not apply laser capture microdissection in this case, significant amount of surrounding tissue was perhaps cut out together with the DR and it may result a bias in the measurement of serotonergic markers. Notably, the decrease of serotonin transporter expression, measured by quantitative in situ hybridization, was approximately 20% in the same animal model 3 weeks after the MDMA treatment, compared to the control level, and this moderate alteration was significant only in case of the fine measurement of grain densities of individual cells but not with the measuring of the autoradiography signal on film [5].

On the other hand, microarray method has well-known drawbacks, when compared to polymerase chain reaction (PCR) methods or in-situ hybridization used in our earlier papers. Namely, limited amount of probes on the microarray may result in smaller fold change values. In addition, shorter oligomers used can result in more mismatch hybridization, which can overcome smaller changes in gene expressions, like that in the case of serotonin transporter. However, for this very reason we assume that the results presented here, with our significance criterion, are robust enough to overcome this bias.

We did not find alterations in the *Bdnf* gene expression, which is in agreement with our previous study

where we demonstrated that (after a slight transient acute decrease) BDNF protein level was increased only 8 weeks after same MDMA dosage regimen in same rat strain [29].

Though members of LTP pathway were downregulated, we could not demonstrate a downregulation in the pathway itself by GSEA in HC. GSEA examines all of the genes of a certain pathway in the ordered list of genes (based on t-statistics) between the experimental groups. Significance of complete pathways therefore depends on all of the genes annotated to a given set. This could mean that other members, except those which were significant, in the LTP pathway remained mostly unchanged. However, on one hand, our present knowledge about CaMK II indicates that it can be solely responsible for the induction of LTP [48] and, on the other, related pathways (e.g. cognition and memory sets) were significant, therefore, we think this discrepancy is less of an importance.

We must also note the major limitation of transcriptional studies, namely, mRNA levels do not necessarily reflect to the corresponding protein levels. At the same time, we have to point out that recent studies demonstrated mRNA levels as important regulators of protein levels [76, 77].

Finally, we also have to note that strain selection could have influenced the results because DA rats might be more prone to autoimmune neuroinflammation and glial activation [78], can have altered reactivity in the dopaminergic (and thus reward) system [79], may show elevated serotonergic neurotoxicity after MDMA [80] and DA rats are considered poor or intermediate metabolizers at CYP2D1 corresponding the human CYP2D6 that is implicated in MDMA metabolism [80]. While these effects may have influenced our observations, there is currently no direct proof that our findings would be substantially altered and conclusions limited by using this strain.

### Conclusion

We performed a genome-wide evaluation of transcriptional changes 3 weeks after a single-dose of MDMA in DA rats. The downregulated pathways in the FC were related to the basic mechanisms of the cell functionality in the absence of specific markers of certain pathways. Upregulation of 'dendrite development', 'regulation of synaptic plasticity' and 'positive regulation of synapse assembly' gene sets raise the possibility of new synapse formation/synaptic reorganization mechanisms in the region. All of these results point out to a starting reinstatement of the neuronal pathways and connections in the FC 3 weeks after a 15 mg/kg dose of MDMA. The HC region showed markedly different changes. Our data highlight decreased CaMK II, glutamatergic, Eph receptor and CB1 mRNA levels as potential downstream mediators of MDMA in

the HC. In addition, GSEA showed downregulated ‘cognition’ and ‘memory’ gene sets similarly indicating decreased functionality of LTP and glutamatergic pathways. These results provide further molecular biological information on the transcriptional level, which may underpin the well-known cognitive deficits following MDMA use in humans and animals as well as might indicate a possible mechanism by which the drug can help extinction of negative memory clues in PTSD patients.

## Methods

### Animals

Altogether 21 male DA rats (Harlan, Olac Ltd., Shaw's Farm, Blackthorn, Bicester, Oxon, UK) aged approximately 8 weeks (weighing  $152 \pm 3,58$  g (SEM) at the beginning of the experiment) were used. The animals (four per cage) were kept under controlled environmental conditions along the whole experiment (temperature  $21 \pm 1$  °C, humidity: 40–50%, 12 h light-dark cycle starting at 6:00 a.m.) and food and water were available for them ad libitum.

### Drug administration and experimental design

(±)3,4-methylenedioxyamphetamine (Sanofi-Synthelabo-Chinoin, Hungary, purity > 99.5%) was dissolved in 0.9% NaCl (SAL) at an equivalent dose of 15 mg/kg free base and was administered intraperitoneally (i.p.) in a volume of 1 ml/kg. The dose of MDMA was selected based on the interspecies scaling  $D_{\text{human}} = D_{\text{animal}} \left( \frac{W_{\text{human}}}{W_{\text{animal}}} \right)^{0.7}$ , where  $D$  are doses in mg and  $W$  are weights in kg [81]. By using  $W_{\text{animal}} = 0.152$  kg,  $D_{\text{animal}} = 15$  mg/kg \* 0.152 kg, and  $W_{\text{human}} = 70$  kg, our administration protocol results in a dose of 166.8 mg human dose [81] that is in a similar range as in a recent clinical study (187.5 mg) on MDMA's therapeutic effects [25] and can be found in purer MDMA tablets for recreational use [2, 82].

For control animals SAL was used i.p. in equivalent volumes (1 ml/kg). The MDMA-treated and control groups consisted of 11 and 10 animals, respectively, and were randomly assigned to each group. Vehicle-containing Alzet 2001 osmotic minipumps (Durect Corp., CA, USA) were inserted under the skin for all animals. The rats were sacrificed 3 weeks after the injections.

### RNA extraction and sample preparation

Three weeks after MDMA or vehicle injections rats were killed quickly by decapitation. The brains were removed, approximately 2 mm thick coronal sections were cut and the HC, FC and DR regions were dissected according to Paxinos and Watson ([83], dorsal HC: from bregma – 2.5 mm to – 4.5 mm; FC: from bregma + 1.7 to – 0.3 mm; DR: from bregma – 7 mm to – 8 mm, respectively) and stored at – 80 °C. The samples were homogenized with

1 ml TRIzol reagent (Ambion, TX, USA) according to the manufacturer's instructions. Thus, the homogenized samples were centrifuged at 12000 g at 4 °C for 10 min, the supernatant transferred to a new sterile Eppendorf tube and incubated at room temperature for 5 min. Chloroform in a volume of 200 µl was added; the mixture was vortexed and incubated again at room temperature for 2–3 min. Following centrifugation at 12000 x g at 4 °C for 15 min the upper (clear) aqueous phase was transferred to a new Eppendorf tube and was mixed with 500 µl of isopropanol and incubated for 10 min at room temperature. After centrifuging the samples at 12000 x g at 4 °C for 10 min the supernatant was removed and 1 ml 75% ethanol was added to the precipitation. The samples were again centrifuged at 7500 x g at 4 °C for 5 min, the supernatant was removed, and 1 ml 75% ethanol was added. After centrifuging samples at 7500 x g at 4 °C for 5 min, the ethanol was removed, and the RNA pellets briefly dried. The pellets were dissolved in 20 µl diethylpyrocarbonate treated-dH<sub>2</sub>O (DEPC-dH<sub>2</sub>O) and the samples stored at – 80 °C until further processing. To determine the quality of the samples 1–2 µl were used for optical density (OD, 260/230 and 260/280 ratios) measurements. The OD ratios were determined for all samples and randomly repeated to evaluate the reliability of the measurements (no significant difference was observed, data not shown). Samples with the lowest RNA concentrations were excluded from further analysis and thus both MDMA and control groups consisted of 8 animals. Two-two randomly selected samples were pooled in each treatment group resulting in 4 pooled samples per brain region and per treatment group. These samples (altogether 24 samples) were sent to Service XS (Leiden, Netherlands) for microarray analysis with the Illumina (San Diego, CA, USA) RatRef-12 v1 beadarray expression chip. Upon arrival, samples were once again subjects to a purification process and quality control measurements with Agilent Bioanalyzer and Nanodrop spectrophotometer and one sample from the DR region was excluded from further analysis due to degradation.

### Data analysis

Raw microarray data were processed with beadarray [84], preprocessCore [85] and puma [86] Bioconductor [87] packages for R [88] as described in [89–91]. Briefly, backgroundCorrect method used in the beadarray package was set to “minimum”, and “log = TRUE; n = 10” variables were used for createbeadsummaryData method. The normalization method used was the quantile normalization method in the preprocessCore package. Additionally, pumaComb, pumaDE, and write.rslts functions with default settings were used. Changes were considered statistically significant when the MinPplr was below 0.001. This strict criterion was necessary to

reduce the number of false positive results to an acceptable limit.

Heatmap visualization of the differences in gene expression was done using Multiexperiment Viewer Tool [92, 93]. Genes with similar expression patterns are grouped together with hierarchical clustering (Euclidean distance, average linkage) [94].

GSEA was performed using GSEA version 3.1 from the Broad Institute at MIT (<http://www.broadinstitute.org/gsea>) [95, 96]. Gene sets (GMT format) were obtained from the MSigDB for C5 category (GO gene sets) and in addition, neuronal function related gene sets were selected from the GO homepage ([www.geneontology.org](http://www.geneontology.org); [97]) manually. Gene identifiers used in the array dataset and gene sets were gene symbols. The data set had 22,523 features (Illumina probes), which were collapsed to gene symbols (the median expression value was used for the probe set). In these analyses, the gene sets analyzed were restricted to those sets containing between 15 and 500 genes as recommended [98]. The t-test was used as the metrics for ranking genes and gene set was chosen as the permutation type because of the sample size in the study. One thousand permutations were used to calculate *p*-value with the seed of permutation set to 149. All other basic and advanced fields were set to default. A normalized enrichment score (NES) was calculated for each gene set to represent the degree in which it was enriched in one phenotype. The nominal *p*-value and the FDR corresponding to each NES were calculated. A NES with a nominal *p*-value < 0.05, FDR < 0.25 were considered statistically significant. Network visualization and analysis using enrichment results was done using Cytoscape 2.8.3. and its plugin “Enrichment Analyzer” with the following cut-offs: similarity coefficient cut-off 0.1, *p*-value cut-off 0.05 and FDR cut-off 0.25 [98–100].

### PCR validation

We have validated altogether 19 RNA products from the original pooled samples with real-time PCR on Fluidigm GEx array (San Francisco, CA, USA) using Taqman Gene Expression assays for the appropriate RNAs obtained from Applied Biosystems (Carlsbad, CA, USA) (for the full list of validated genes see Additional file 4: Table S4). Each sample was used in duplo following quality control measurements (altogether three samples were excluded due to degraded or insufficient amount of RNA). The validation experiment was performed by Service XS (Leiden, Netherlands). The Pearson correlation coefficients of the fold change values of the quantile normalized microarray and the housekeeper normalized PCR values were 0.619 and 0.610 for the 200 ng and 500 ng samples, respectively. To provide support to our main conclusions, the array and PCR fold change values of the extensively discussed significant genes included in the validation study (*Gria3*,

*Camk2g*, *Camk2b*, *Grin2b* and *Cnr1*) in the FC and HC are given in Additional file 5: Table S5.

## Additional files

**Additional file 1: Table S1.** contains significantly up- or downregulated genes compared to the control group in the three examined brain region. (XLSX 123 kb)

**Additional file 2: Table S2.** contains individually selected GO terms for GSEA analysis. (XLSX 42 kb)

**Additional file 3: Table S3.** contains the significantly enriched GO terms selected by NES, FDR and nominal *p*-values (nomP) in the examined brain regions. (XLSX 15 kb)

**Additional file 4: Table S4.** contains the genes validated with the Fluidigm GEx PCR array and the used TaqMan assays. (XLSX 18 kb)

**Additional file 5: Table S5.** contains the fold change values of genes validated and extensively discussed in the manuscript measured by Illumina RatRef-12 v1 beadarrays and Fluidigm GEx PCR method after normalization. (XLSX 10 kb)

## Abbreviations

11 $\beta$ -HSD1 (*Hsd11b1*): 11 beta-hydroxysteroid dehydrogenase type 1 (gene); 5-HT: 5-hydroxytryptamine, serotonin; AMPA:  $\alpha$ -amino-3-hydroxy-5-methyl-4-isoxazolepropionic acid; AMPA3 (*Gria3*): Glutamate ionotropic receptor AMPA type subunit 3 (gene); ATP2B1 (*Atp2b1*): ATPase, Ca<sup>++</sup> transporting, plasma membrane 1 (gene); ATP2B3 (*Atp2b3*): ATPase, Ca<sup>++</sup> transporting, plasma membrane 3 (gene); BDNF (*Bdnf*): Brain-derived neurotrophic factor (gene); Camk1g (*Camk1g*): Calcium/calmodulin-dependent protein kinase I gamma subunit (gene); Camk2g/2b (*Camk2g/2b*): Calcium/calmodulin-dependent protein kinase II gamma/beta subunits (genes); *Camk2n2*: Calcium/calmodulin-dependent protein kinase II inhibitor 2 gene; CaMKII: Calcium/calmodulin dependent protein kinase II; CB1 (*Cnr1*): Cannabinoid receptor type 1 (gene); CNS: Central nervous system; CYP2D1: Cytochrome P450 2D1; CYP2D6: Cytochrome P450 2D6; DA: Dark Agouti; *Dao1*: D-amino oxidase gene; DEPC-dH<sub>2</sub>O: Diethylpyrocarbonate treated-dH<sub>2</sub>O; DR: Dorsal raphe; EphA4 (*Epha4*, *LOC316539*): Ephrin-type A receptor 4 (gene); EphA5 (*Epha5*): Ephrin-type A receptor 5 (gene); EphA6 (*Epha6*): Ephrin-type A receptor 6 (gene); FC: Frontal cortex; FDR: False discovery rate; fMRI: Functional magnetic resonance imaging; GABA-A: Gamma-aminobutyric acid A receptor; *Gabra*: Gamma-aminobutyric acid A receptor, epsilon subunit gene; GO: Gene ontology; GSEA: Gene set enrichment analysis; HC: Hippocampus; *Hsf2*: Heat shock factor 2 gene; HSP90 $\alpha$  (*Hspca*): Alpha subunit of the heat shock protein 1 (gene); HSPs: Heat-shock proteins; i.p.: Intraperitoneally; *Kalrn*: Kalirin gene; KO: Knockout; Kv3.1b (*Kcnc2*): Potassium voltage gated channel, Shaw-related subfamily, member 2 (gene); Kv4.2 (*Kcnd2*): Potassium voltage-gated channel, Shal-related family, member 2 (gene); LTP: Long-term potentiation; MDMA : 3,4-methylenedioxyamphetamine; MinPplr: Minimum probability of positive log ratio; mRNA: Messenger RNA; MSigDB: Molecular signatures database; NES: Normalized enrichment score; NMDA: N-methyl-D-aspartate; NMDA2A/GRIN2A (*Grin2a*): N-methyl D-aspartate receptor subtype 2A/Glutamate receptor, ionotropic subtype 2A (gene); NMDA2B/GRIN2B (*Grin2b*): N-methyl D-aspartate receptor subtype 2B/Glutamate receptor, ionotropic subtype 2B (gene); OD: Optical density; PCR: Polymerase chain reaction; PFC: Prefrontal cortical regions; PTSD: Post-traumatic stress disorder; RhoGEFs: Guanine nucleotide exchange factors that activate Rho GTPases; RhoGTPase: Rho family of GTP-binding protein regulators; RNA: Ribonucleic acid; SAL: Saline; SEM: Standard error of the mean; *Slc1a3*: Solute carrier family 1 (glial high affinity glutamate transporter), member 3 gene; *Slc5a3*: Solute carrier family 5 (inositol transporters), member 3 gene; *Slc6a5*: Solute carrier family 6 (neurotransmitter transporter, glycine), member 5 gene

## Acknowledgments

We'd like to thank to Timothy A. Hinsley, who performed the data normalization and to Anna Petschner for her contribution to the figures.

### Funding

This manuscript was supported by the European Commission Framework 6. Integrated Project NEWMOOD, by the Hungarian Academy of Sciences and Semmelweis University (MTA-SE Neuropsychopharmacology and Neurochemistry Research Group), by the Hungarian Brain Research Program (Grants KTIA\_13\_NAP-A-II/14 and 2017-1.2.1-NKP-2017-00002) and National Development Agency (Grant KTIA\_NAP\_13-1-2013-0001), by the ÚNKP-17-4-I-SE-8 New National Excellence Program of the Ministry of Human Capacities, by János Bolyai Research Scholarship of the Hungarian Academy of Sciences and by the Hungarian Scientific Research Fund (Grant: OTKA-PD 108297).

### Availability of data and materials

The data supporting the results of this publication have been deposited in NCBI's Gene Expression Omnibus [101] and are accessible through GEO Series accession number GSE47541 (<http://www.ncbi.nlm.nih.gov/geo/query/acc.cgi?acc=GSE47541>).

### Author's contributions

PP participated in the GSEA and gene level analysis, wrote scripts, interpreted the data and drafted the manuscript. VT carried out the GSEA analysis and participated in the interpretation while also contributed in drafting of the manuscript. CA, EK, RDA carried out the treatment protocol dissected the brain samples and prepared the RNA extractions. LT helped in data analysis, to draft the manuscript and supervised the programming tasks. GB prepared study design and protocols, coordinated the study and helped in the interpretation and drafting of the manuscript. All authors have read and approved the final manuscript.

### Ethics approval and consent to participate

The animal experiments and housing conditions were carried out in accordance with the European Community Council Directive of 24 November 1986 (86/609/EEC), as well as the National Institutes of Health Principles of Laboratory Animal Care (NIH Publication 85-23, revised 1985) and special national laws (the Hungarian Governmental Regulation on animal studies, 31 December 1998 Act). The experiments were approved by the National Scientific Ethical Committee on Animal Experimentation and permitted by the Food Chain Safety and Animal Health Directorate of the Central Agricultural Office, Hungary (permission number: 22.1/3152/001/2007).

### Consent for publication

Not applicable.

### Competing interests

The authors declare that they have no competing interests.

### Publisher's Note

Springer Nature remains neutral with regard to jurisdictional claims in published maps and institutional affiliations.

### Author details

<sup>1</sup>Department of Pharmacodynamics, Semmelweis University, Nagyvarad ter 4., Budapest H-1089, Hungary. <sup>2</sup>MTA-SE Neuropsychopharmacology & Neurochemistry Research Group, Nagyvarad ter 4., Budapest H-1089, Hungary. <sup>3</sup>Department of Genetics, Cell- and Immunobiology, Semmelweis University, Nagyvarad ter 4., Budapest H-1089, Hungary. <sup>4</sup>Retzius Laboratory, Department of Neuroscience, Karolinska Institutet, Retzius väg 8, 17177, Stockholm, Sweden. <sup>5</sup>NAP-2-SE New Antidepressant Target Research Group, Semmelweis University, Nagyvarad ter 4., Budapest H-1089, Hungary.

Received: 3 May 2017 Accepted: 5 July 2018

Published online: 02 August 2018

### References

- Colado MI, O'Shea E, Granados R, Esteban B, Martin AB, Green AR. Studies on the role of dopamine in the degeneration of 5-HT nerve endings in the brain of dark Agouti rats following 3,4-methylenedioxymethamphetamine (MDMA or 'ecstasy') administration. *Br J Pharmacol*. 1999;126(4):911-24.
- Green AR, Mechan AO, Elliott JM, O'Shea E, Colado MI. The pharmacology and clinical pharmacology of 3,4-methylenedioxymethamphetamine (MDMA, 'ecstasy'). *Pharmacol Rev*. 2003;55(3):463-508.
- Capela JP, Carmo H, Remiao F, Bastos ML, Meisel A, Carvalho F. Molecular and cellular mechanisms of ecstasy-induced neurotoxicity: an overview. *Mol Neurobiol*. 2009;39(3):210-71.
- Adori C, Ando RD, Kovacs GG, Bagdy G. Damage of serotonergic axons and immunolocalization of Hsp27, Hsp72, and Hsp90 molecular chaperones after a single dose of MDMA administration in dark Agouti rat: temporal, spatial, and cellular patterns. *J Comp Neurol*. 2006;497(2):251-69.
- Kirilly E, Molnar E, Balogh B, Kantor S, Hansson SR, Palkovits M, Bagdy G. Decrease in REM latency and changes in sleep quality parallel serotonergic damage and recovery after MDMA: a longitudinal study over 180 days. *Int J Neuropsychopharmacol*. 2008;11(6):795-809.
- McCann UD, Szabo Z, Seckin E, Rosenblatt P, Mathews WB, Ravert HT, Dannals RF, Ricaurte GA. Quantitative PET studies of the serotonin transporter in MDMA users and controls using [11C]McN5652 and [11C]DASB. *Neuropsychopharmacology*. 2005;30(9):1741-50.
- Ando RD, Benko A, Ferrington L, Kirilly E, Kelly PA, Bagdy G. Partial lesion of the serotonergic system by a single dose of MDMA results in behavioural disinhibition and enhances acute MDMA-induced social behaviour on the social interaction test. *Neuropharmacology*. 2006;50(7):884-96.
- Bond AJ, Verheyden SL, Wingrove J, Curran HV. Angry cognitive bias, trait aggression and impulsivity in substance users. *Psychopharmacology*. 2004;171(3):331-9.
- Nulsen CE, Fox AM, Hammond GR. Differential effects of ecstasy on short-term and working memory: a meta-analysis. *Neuropsychol Rev*. 2010;20(1):21-32.
- Parrott AC, Sisk E, Turner JJ. Psychobiological problems in heavy 'ecstasy' (MDMA) polydrug users. *Drug Alcohol Depend*. 2000;60(1):105-10.
- Ferrington L, Kirilly E, McBean DE, Olverman HJ, Bagdy G, Kelly PA. Persistent cerebrovascular effects of MDMA and acute responses to the drug. *Eur J Neurosci*. 2006;24(2):509-19.
- Kovacs GG, Ando RD, Adori C, Kirilly E, Benedek A, Palkovits M, Bagdy G. Single dose of MDMA causes extensive decrement of serotonergic fibre density without blockage of the fast axonal transport in dark Agouti rat brain and spinal cord. *Neuropathol Appl Neurobiol*. 2007;33(2):193-203.
- Mechan AO, Esteban B, O'Shea E, Elliott JM, Colado MI, Green AR. The pharmacology of the acute hyperthermic response that follows administration of 3,4-methylenedioxymethamphetamine (MDMA, 'ecstasy') to rats. *Br J Pharmacol*. 2002;135(1):170-80.
- Vollenweider FX, Gamma A, Liechti M, Huber T. Psychological and cardiovascular effects and short-term sequelae of MDMA ('ecstasy') in MDMA-naïve healthy volunteers. *Neuropsychopharmacology*. 1998;19(4):241-51.
- Törk I. Raphe nuclei and serotonin containing systems. Paxinos G. The rat nervous system. Sydney: Academic Press; 1985. p. 43-78.
- Kosofsky BE, Molliver ME. The serotonergic innervation of cerebral cortex: different classes of axon terminals arise from dorsal and median raphe nuclei. *Synapse*. 1987;1(2):153-68.
- Baker KG, Halliday GM, Tork I. Cytoarchitecture of the human dorsal raphe nucleus. *J Comp Neurol*. 1990;301(2):147-61.
- Gulyas AI, Acsady L, Freund TF. Structural basis of the cholinergic and serotonergic modulation of GABAergic neurons in the hippocampus. *Neurochem Int*. 1999;34(5):359-72.
- Chayer C, Freedman M. Frontal lobe functions. *Curr Neurol Neurosci Rep*. 2001;1(6):547-52.
- Andres P. Frontal cortex as the central executive of working memory: time to revise our view. *Cortex*. 2003;39(4-5):871-95.
- Buckner RL, Kelley WM, Petersen SE. Frontal cortex contributes to human memory formation. *Nat Neurosci*. 1999;2(4):311-4.
- D'Esposito M, Postle BR, Rypma B. Prefrontal cortical contributions to working memory: evidence from event-related fMRI studies. *Exp Brain Res*. 2000;133(1):3-11.
- Acsady L, Kali S. Models, structure, function: the transformation of cortical signals in the dentate gyrus. *Prog Brain Res*. 2007;163:577-99.
- Mithoefer MC, Wagner MT, Mithoefer AT, Jerome L, Martin SF, Yazar-Klosinski B, Michel Y, Brewerton TD, Doblin R. Durability of improvement in post-traumatic stress disorder symptoms and absence of harmful effects or drug dependency after 3,4-methylenedioxymethamphetamine-assisted psychotherapy: a prospective long-term follow-up study. *J Psychopharmacol*. 2013;27(1):28-39.
- Mithoefer MC, Wagner MT, Mithoefer AT, Jerome L, Doblin R. The safety and efficacy of (+/-)3,4-methylenedioxymethamphetamine-assisted psychotherapy in subjects with chronic, treatment-resistant posttraumatic

- stress disorder: the first randomized controlled pilot study. *J Psychopharmacol.* 2011;25(4):439–52.
26. Stetler RA, Gan Y, Zhang W, Liou AK, Gao Y, Cao G, Chen J. Heat shock proteins: cellular and molecular mechanisms in the central nervous system. *Prog Neurobiol.* 2010;92(2):184–211.
  27. Lu Y, Christian K, Lu B. BDNF: a key regulator for protein synthesis-dependent LTP and long-term memory? *Neurobiol Learn Mem.* 2008; 89(3):312–23.
  28. Martinez-Turrillas R, Moyano S, Del Rio J, Frechilla D. Differential effects of 3,4-methylenedioxyamphetamine (MDMA, "ecstasy") on BDNF mRNA expression in rat frontal cortex and hippocampus. *Neurosci Lett.* 2006; 402(1–2):126–30.
  29. Adori C, Ando RD, Ferrington L, Szekeres M, Vas S, Kelly PA, Hunyady L, Bagdy G. Elevated BDNF protein level in cortex but not in hippocampus of MDMA-treated dark Agouti rats: a potential link to the long-term recovery of serotonergic axons. *Neurosci Lett.* 2010;478(2):56–60.
  30. Adori C, Ando RD, Szekeres M, Gutknecht L, Kovacs GG, Hunyady L, Lesch KP, Bagdy G. Recovery and aging of serotonergic fibers after single and intermittent MDMA treatment in dark Agouti rat. *J Comp Neurol.* 2011; 519(12):2353–78.
  31. Simantov R. Multiple molecular and neuropharmacological effects of MDMA (ecstasy). *Life Sci.* 2004;74(7):803–14.
  32. Fernandez-Castillo N, Orejarena MJ, Ribases M, Blanco E, Casas M, Robledo P, Maldonado R, Cormand B. Active and passive MDMA (ecstasy) intake induces differential transcriptional changes in the mouse brain. *Genes Brain Behav.* 2012;11(1):38–51.
  33. Thiriet N, Ladenheim B, McCoy MT, Cadet JL. Analysis of ecstasy (MDMA)-induced transcriptional responses in the rat cortex. *FASEB J.* 2002;16(14):1887–94.
  34. Broening HW, Bowyer JF, Slikker W Jr. Age-dependent sensitivity of rats to the long-term effects of the serotonergic neurotoxicant (+/–)-3,4-methylenedioxyamphetamine (MDMA) correlates with the magnitude of the MDMA-induced thermal response. *J Pharmacol Exp Ther.* 1995;275(1):325–33.
  35. Gordon CJ, Watkinson WP, O'Callaghan JP, Miller DB. Effects of 3,4-methylenedioxyamphetamine on autonomic thermoregulatory responses of the rat. *Pharmacol Biochem Behav.* 1991;38(2):339–44.
  36. Green AR, O'Shea E, Saadat KS, Elliott JM, Colado MI. Studies on the effect of MDMA (ecstasy) on the body temperature of rats housed at different ambient room temperatures. *Br J Pharmacol.* 2005;146(2):306–12.
  37. Kolbrich EA, Goodwin RS, Gorelick DA, Hayes RJ, Stein EA, Huestis MA. Physiological and subjective responses to controlled oral 3,4-methylenedioxyamphetamine administration. *J Clin Psychopharmacol.* 2008;28(4):432–40.
  38. Malberg JE, Seiden LS. Small changes in ambient temperature cause large changes in 3,4-methylenedioxyamphetamine (MDMA)-induced serotonin neurotoxicity and core body temperature in the rat. *J Neurosci.* 1998;18(13):5086–94.
  39. Herrero MT, Barcia C, Navarro JM. Functional anatomy of thalamus and basal ganglia. *Childs Nerv Syst.* 2002;18(8):386–404.
  40. Balogh B, Molnar E, Jakus R, Quate L, Olverman HJ, Kelly PA, Kantor S, Bagdy G. Effects of a single dose of 3,4-methylenedioxyamphetamine on circadian patterns, motor activity and sleep in drug-naive rats and rats previously exposed to MDMA. *Psychopharmacology.* 2004;173(3–4):296–309.
  41. Gyongyosi N, Balogh B, Kirilly E, Kitka T, Kantor S, Bagdy G. MDMA treatment 6 months earlier attenuates the effects of CP-94,253, a 5-HT1B receptor agonist, on motor control but not sleep inhibition. *Brain Res.* 2008;1231:34–46.
  42. Gyongyosi N, Balogh B, Katai Z, Molnar E, Laufer R, Tekes K, Bagdy G. Activation of 5-HT3 receptors leads to altered responses 6 months after MDMA treatment. *J Neural Transm.* 2010;117(3):285–92.
  43. Karageorgiou J, Dietrich MS, Charboneau EJ, Woodward ND, Blackford JU, Salomon RM, Cowan RL. Prior MDMA (ecstasy) use is associated with increased basal ganglia-thalamocortical circuit activation during motor task performance in humans: an fMRI study. *NeuroImage.* 2009;46(3):817–26.
  44. Seitz RJ, Franz M, Azari NP. Value judgments and self-control of action: the role of the medial frontal cortex. *Brain Res Rev.* 2009;60(2):368–78.
  45. Duncan J, Owen AM. Common regions of the human frontal lobe recruited by diverse cognitive demands. *Trends Neurosci.* 2000;23(10):475–83.
  46. Dalley JW, Cardinal RN, Robbins TW. Prefrontal executive and cognitive functions in rodents: neural and neurochemical substrates. *Neurosci Biobehav Rev.* 2004;28(7):771–84.
  47. Wilkerson DC, Skaggs HS, Sarge KD. HSF2 binds to the Hsp90, Hsp27, and c-Fos promoters constitutively and modulates their expression. *Cell Stress Chaperones.* 2007;12(3):283–90.
  48. Herring BE, Nicoll RA. Long-term potentiation: from CaMKII to AMPA receptor trafficking. *Annu Rev Physiol.* 2016;78:351–65.
  49. Ryan TJ, Kopanitsa MV, Indersmitten T, Nithianantharajah J, Afinowi NO, Pettit C, Stanford LE, Sprengel R, Saksida LM, Bussey TJ, et al. Evolution of GluN2A/B cytoplasmic domains diversified vertebrate synaptic plasticity and behavior. *Nat Neurosci.* 2013;16(1):25–32.
  50. Rioult-Pedotti MS, Friedman D, Hess G, Donoghue JP. Strengthening of horizontal cortical connections following skill learning. *Nat Neurosci.* 1998; 1(3):230–4.
  51. Rioult-Pedotti MS, Friedman D, Donoghue JP. Learning-induced LTP in neocortex. *Science.* 2000;290(5491):533–6.
  52. Fawcett J. Molecular control of brain plasticity and repair. *Prog Brain Res.* 2009;175:501–9.
  53. Moyano S, Del Rio J, Frechilla D. Acute and chronic effects of MDMA on molecular mechanisms implicated in memory formation in rat hippocampus: surface expression of CaMKII and NMDA receptor subunits. *Pharmacol Biochem Behav.* 2005;82(1):190–9.
  54. Kay C, Harper DN, Hunt M. The effects of binge MDMA on acquisition and reversal learning in a radial-arm maze task. *Neurobiol Learn Mem.* 2011; 95(4):473–83.
  55. Wagner D, Tkotz S, Koester P, Becker B, Gouzoulis-Mayfrank E, Daumann J. Learning, memory, and executive function in new MDMA users: a 2-year follow-up study. *Front Neurosci.* 2015;9:445.
  56. Nawata Y, Hiranita T, Yamamoto T. A cannabinoid CB(1) receptor antagonist ameliorates impairment of recognition memory on withdrawal from MDMA (ecstasy). *Neuropsychopharmacology.* 2010;35(2):515–20.
  57. Bruckner K, Pasquale EB, Klein R. Tyrosine phosphorylation of transmembrane ligands for Eph receptors. *Science.* 1997;275(5306):1640–3.
  58. Hruska M, Dalva MB. Ephrin regulation of synapse formation, function and plasticity. *Mol Cell Neurosci.* 2012;50(1):35–44.
  59. Simon AM, de Maturana RL, Ricobaraza A, Escriban L, Schiapparelli L, Cuadrado-Tejedor M, Perez-Mediavilla A, Avila J, Del Rio J, Frechilla D. Early changes in hippocampal Eph receptors precede the onset of memory decline in mouse models of Alzheimer's disease. *J Alzheimers Dis.* 2009; 17(4):773–86.
  60. Murai KK, Nguyen LN, Irie F, Yamaguchi Y, Pasquale EB. Control of hippocampal dendritic spine morphology through ephrin-A3/EphA4 signaling. *Nat Neurosci.* 2003;6(2):153–60.
  61. Savelieva KV, Rajan I, Baker KB, Vogel P, Jarman W, Allen M, Lanthorn TH. Learning and memory impairment in Eph receptor A6 knockout mice. *Neurosci Lett.* 2008;438(2):205–9.
  62. Gao PP, Yue Y, Cerretti DP, Dreyfus C, Zhou R. Ephrin-dependent growth and pruning of hippocampal axons. *Proc Natl Acad Sci U S A.* 1999;96(7):4073–7.
  63. Kawamura Y, Fukaya M, Maejima T, Yoshida T, Miura E, Watanabe M, Ohno-Shosaku T, Kano M. The CB1 cannabinoid receptor is the major cannabinoid receptor at excitatory presynaptic sites in the hippocampus and cerebellum. *J Neurosci.* 2006;26(11):2991–3001.
  64. Schlicker E, Kathmann M. Modulation of transmitter release via presynaptic cannabinoid receptors. *Trends Pharmacol Sci.* 2001;22(11):565–72.
  65. Hashimoto Y, Ohno-Shosaku T, Watanabe M, Kano M. Roles of phospholipase C $\beta$  and NMDA receptor in activity-dependent endocannabinoid release. *J Physiol.* 2007;584(Pt 2):373–80.
  66. Serodio P, Rudy B. Differential expression of Kv4 K<sup>+</sup> channel subunits mediating subthreshold transient K<sup>+</sup> (A-type) currents in rat brain. *J Neurophysiol.* 1998;79(2):1081–91.
  67. Varga AW, Yuan LL, Anderson AE, Schrader LA, Wu GY, Gatchel JR, Johnston D, Sweatt JD. Calcium-calmodulin-dependent kinase II modulates Kv4.2 channel expression and upregulates neuronal A-type potassium currents. *J Neurosci.* 2004;24(14):3643–54.
  68. Henderson Z, Lu CB, Janzso G, Matto N, McKinley CE, Yanagawa Y, Halasy K. Distribution and role of Kv3.1b in neurons in the medial septum diagonal band complex. *Neuroscience.* 2010;166(3):952–69.
  69. Myers KM, Davis M. Mechanisms of fear extinction. *Mol Psychiatry.* 2007; 12(2):120–50.
  70. Wicking M, Steiger F, Nees F, Diener SJ, Grimm O, Ruttorf M, Schad LR, Winkelmann T, Wirtz G, Flor H. Deficient fear extinction memory in posttraumatic stress disorder. *Neurobiol Learn Mem.* 2016;136:116–26.



71. Adori C, Low P, Ando RD, Gutknecht L, Pap D, Truszka F, Takacs J, Kovacs GG, Lesch KP, Bagdy G. Ultrastructural characterization of tryptophan hydroxylase 2-specific cortical serotonergic fibers and dorsal raphe neuronal cell bodies after MDMA treatment in rat. *Psychopharmacology*. 2011;213(2–3):377–91.
72. McCann UD, Eligulashvili V, Merti M, Murphy DL, Ricaurte GA. Altered neuroendocrine and behavioral responses to m-chlorophenylpiperazine in 3,4-methylenedioxyamphetamine (MDMA) users. *Psychopharmacology*. 1999;147(1):56–65.
73. Gerra G, Bassignana S, Zaimovic A, Moi G, Bussandri M, Caccavari R, Brambilla F, Molina E. Hypothalamic-pituitary-adrenal axis responses to stress in subjects with 3,4-methylenedioxy-methamphetamine ('ecstasy') use history: correlation with dopamine receptor sensitivity. *Psychiatry Res*. 2003; 120(2):115–24.
74. Caughey S, Harris AP, Seckl JR, Holmes MC, Yau JL. Forebrain-specific transgene rescue of 11beta-HSD1 associates with impaired spatial memory and reduced hippocampal BDNF mRNA levels in aged 11beta-HSD1 deficient mice. *J Neuroendocrinol*. 2016;29(1):1–9.
75. Lakshmi V, Sakai RR, McEwen BS, Monder C. Regional distribution of 11 beta-hydroxysteroid dehydrogenase in rat brain. *Endocrinology*. 1991;128(4):1741–8.
76. Schwanhausser B, Busse D, Li N, Dittmar G, Schuchhardt J, Wolf J, Chen W, Selbach M. Global quantification of mammalian gene expression control. *Nature*. 2011;473(7347):337–42.
77. Edfors F, Danielsson F, Hallstrom BM, Kall L, Lundberg E, Ponten F, Forsstrom B, Uhlen M. Gene-specific correlation of RNA and protein levels in human cells and tissues. *Mol Syst Biol*. 2016;12(10):883.
78. Bellander BM, Lidman O, Ohlsson M, Meijer B, Piehl F, Svensson M. Genetic regulation of microglia activation, complement expression, and neurodegeneration in a rat model of traumatic brain injury. *Exp Brain Res*. 2010;205(1):103–14.
79. van Den Brandt J, Kovacs P, Kloting I. Metabolic variability among disease-resistant inbred rat strains and in comparison with wild rats (*Rattus norvegicus*). *Clin Exp Pharmacol Physiol*. 2000;27(10):793–5.
80. Colado MI, Williams JL, Green AR. The hyperthermic and neurotoxic effects of 'Ecstasy' (MDMA) and 3,4 methylenedioxyamphetamine (MDA) in the dark Agouti (DA) rat, a model of the CYP2D6 poor metabolizer phenotype. *Br J Pharmacol*. 1995;115(7):1281–9.
81. Mordenti J, Chappell W. The use of interspecies scaling in toxicokinetics. In: Yacobi A, Skelly JP, Batra VK, editors. *Toxicokinetics and new drug development*, vol. xii. 1st ed. New York: Pergamon Press; 1989. p. 246.
82. Parrott AC. Chronic tolerance to recreational MDMA (3,4-methylenedioxyamphetamine) or ecstasy. *J Psychopharmacol*. 2005; 19(1):71–83.
83. Paxinos G, Watson C. *The rat brain in stereotaxic coordinates*. 2nd ed. Sydney: Academic Press; 1986.
84. Dunning MJ, Smith ML, Ritchie ME, Tavaré S. Beadarray: R classes and methods for Illumina bead-based data. *Bioinformatics*. 2007;23(16):2183–4.
85. Bolstad BM: preprocessCore: a collection of pre-processing functions. R package version 1.20.0. 2010.
86. Pearson RD, Liu X, Sanguinetti G, Milo M, Lawrence ND, Rattray M. Puma: a Bioconductor package for propagating uncertainty in microarray analysis. *BMC Bioinformatics*. 2009;10:211.
87. Gentleman RC, Carey VJ, Bates DM, Bolstad B, Dettling M, Dudoit S, Ellis B, Gautier L, Ge Y, Gentry J, et al. Bioconductor: open software development for computational biology and bioinformatics. *Genome Biol*. 2004;5(10):R80.
88. Core Team R. R: a language and environment for statistical computing. Vienna: Foundation for Statistical Computing; 2012.
89. Alltoa A, Koiv K, Hinsley TA, Brass A, Harro J. Differential gene expression in a rat model of depression based on persistent differences in exploratory activity. *Eur Neuropsychopharmacol*. 2010;20(5):288–300.
90. Tamasi V, Petschner P, Adori C, Kirilly E, Ando RD, Tothfalusi L, Juhasz G, Bagdy G. Transcriptional evidence for the role of chronic venlafaxine treatment in neurotrophic signaling and neuroplasticity including also glutamatergic [corrected] - and insulin-mediated neuronal processes. *PLoS One*. 2014;9(11):e113662.
91. Petschner P, Juhasz G, Tamasi V, Adori C, Tothfalusi L, Hokfelt T, Bagdy G. Chronic venlafaxine treatment fails to alter the levels of galanin system transcripts in normal rats. *Neuropeptides*. 2016;57:65–70.
92. Saeed AI, Bhagabati NK, Braisted JC, Liang W, Sharov V, Howe EA, Li J, Thiagarajan M, White JA, Quackenbush J. TM4 microarray software suite. *Methods Enzymol*. 2006;411:134–93.
93. Saeed AI, Sharov V, White J, Li J, Liang W, Bhagabati N, Braisted J, Klapa M, Currier T, Thiagarajan M, et al. TM4: a free, open-source system for microarray data management and analysis. *BioTechniques*. 2003;34(2):374–8.
94. Eisen MB, Spellman PT, Brown PO, Botstein D. Cluster analysis and display of genome-wide expression patterns. *Proc Natl Acad Sci U S A*. 1998;95(25): 14863–8.
95. Subramanian A, Tamayo P, Mootha VK, Mukherjee S, Ebert BL, Gillette MA, Paulovich A, Pomeroy SL, Golub TR, Lander ES, et al. Gene set enrichment analysis: a knowledge-based approach for interpreting genome-wide expression profiles. *Proc Natl Acad Sci U S A*. 2005;102(43):15545–50.
96. Mootha VK, Lindgren CM, Eriksson KF, Subramanian A, Sihag S, Lehar J, Puigserver P, Carlsson E, Ridderstrale M, Laurila E, et al. PGC-1alpha-responsive genes involved in oxidative phosphorylation are coordinately downregulated in human diabetes. *Nat Genet*. 2003;34(3):267–73.
97. Ashburner M, Ball CA, Blake JA, Botstein D, Butler H, Cherry JM, Davis AP, Dolinski K, Dwight SS, Eppig JT, et al. Gene ontology: tool for the unification of biology. The gene ontology consortium. *Nature genetics*. 2000;25(1):25–9.
98. Merico D, Isserlin R, Stueker O, Emili A, Bader GD. Enrichment map: a network-based method for gene-set enrichment visualization and interpretation. *PLoS One*. 2010;5(11):e13984.
99. Shannon P, Markiel A, Ozier O, Baliga NS, Wang JT, Ramage D, Amin N, Schwikowski B, Ideker T. Cytoscape: a software environment for integrated models of biomolecular interaction networks. *Genome Res*. 2003;13(11): 2498–504.
100. Cline MS, Smoot M, Cerami E, Kuchinsky A, Landys N, Workman C, Christmas R, Avila-Campillo I, Creech M, Gross B, et al. Integration of biological networks and gene expression data using Cytoscape. *Nat Protoc*. 2007;2(10): 2366–82.
101. Edgar R, Domrachev M, Lash AE. Gene expression omnibus: NCBI gene expression and hybridization array data repository. *Nucleic Acids Res*. 2002; 30(1):207–10.

**Ready to submit your research? Choose BMC and benefit from:**

- fast, convenient online submission
- thorough peer review by experienced researchers in your field
- rapid publication on acceptance
- support for research data, including large and complex data types
- gold Open Access which fosters wider collaboration and increased citations
- maximum visibility for your research: over 100M website views per year

At BMC, research is always in progress.

Learn more [biomedcentral.com/submissions](https://www.biomedcentral.com/submissions)

