

RESEARCH ARTICLE

Open Access



Using whole genome sequencing to investigate transmission in a multi-host system: bovine tuberculosis in New Zealand

Joseph Crispell¹, Ruth N. Zadoks¹, Simon R. Harris², Brent Paterson³, Desmond M. Collins⁴, Geoffrey W. de-Lisle⁴, Paul Livingstone³, Mark A. Neill³, Roman Biek¹, Samantha J. Lycett⁵, Rowland R. Kao^{1*} and Marian Price-Carter⁴

Abstract

Background: Bovine tuberculosis (bTB), caused by *Mycobacterium bovis*, is an important livestock disease raising public health and economic concerns around the world. In New Zealand, a number of wildlife species are implicated in the spread and persistence of bTB in cattle populations, most notably the brushtail possum (*Trichosurus vulpecula*). Whole Genome Sequenced (WGS) *M. bovis* isolates sourced from infected cattle and wildlife across New Zealand were analysed. Bayesian phylogenetic analyses were conducted to estimate the substitution rate of the sampled population and investigate the role of wildlife. In addition, the utility of WGS was examined with a view to these methods being incorporated into routine bTB surveillance.

Results: A high rate of exchange was evident between the sampled wildlife and cattle populations but directional estimates of inter-species transmission were sensitive to the sampling strategy employed. A relatively high substitution rate was estimated, this, in combination with a strong spatial signature and a good agreement to previous typing methods, acts to endorse WGS as a typing tool.

Conclusions: In agreement with the current knowledge of bTB in New Zealand, transmission of *M. bovis* between cattle and wildlife was evident. Without direction, these estimates are less informative but taken in conjunction with the low prevalence of bTB in New Zealand's cattle population it is likely that, currently, wildlife populations are acting as the main bTB reservoir. Wildlife should therefore continue to be targeted if bTB is to be eradicated from New Zealand. WGS will be a considerable aid to bTB eradication by greatly improving the discriminatory power of molecular typing data. The substitution rates estimated here will be an important part of epidemiological investigations using WGS data.

Keywords: Bovine tuberculosis, Whole Genome Sequencing, New Zealand, Substitution rate, Inter-species transmission

Background

Control of a disease in a multi-host system is most efficient when the role of the different hosts is understood [1, 2]. Control of bovine tuberculosis (bTB) in domestic cattle herds is motivated by the zoonotic risk of the causative agent *Mycobacterium bovis*, its impacts on animal productivity, and the benefits of TB-free status in

international trade [3]. *M. bovis* infection has been successfully combated in many countries [4–6]. Effective campaigns have relied upon test and slaughter regimes, movement restrictions and abattoir surveillance. Despite success using such regimes, endemic bTB still exists, most notably in areas that have wildlife reservoirs of infection. A broad host range, promoting multi-host bTB systems, is considered to be one means by which *M. bovis* persists in the face of control [7, 8].

In New Zealand, the introduced brushtail possum (*Trichosurus vulpecula*) has long been recognised as an

* Correspondence: Rowland.Kao@glasgow.ac.uk

¹Institute of Biodiversity, Animal Health, and Comparative Medicine, University of Glasgow, Glasgow, Scotland G61 1QH, UK
Full list of author information is available at the end of the article



important maintenance reservoir for *M. bovis* [9, 10]. In addition, deer, pigs, and ferrets are thought to act as key spatial and temporal vectors of infection [10]. Control of bTB in cattle herds uses test and slaughter surveillance; more frequent testing and movement control are employed in Vector Risk Areas (VRAs), where the risk of infection from wildlife is highest [11]. Within VRAs, control methods such as trapping and poisoning are primarily aimed at the possum population so as to limit the potential for intra- and inter-species transmission [12]. The incidence of infected cattle herds has been drastically reduced over the last two decades [13] but complete eradication remains elusive, likely as a result of persistent infection in wildlife populations.

Discriminatory molecular typing tools have been extremely helpful in the study of *M. bovis* infection in livestock, informing the tracking of infection [14–16] and improving our understanding of how bTB spreads and persists [17, 18]. Traditionally in New Zealand, Restriction Endonuclease Analysis (REA) typing was used extensively during bTB surveillance. Cattle and wildlife were shown to share the same REA type [19], and importantly, local regionalisation of REA types enabled the distinction between re-infection and introduction [20]. While REA typing is discriminatory, it is technically challenging to perform, interpret and document, and has recently been replaced with Variable Number Tandem Repeat (VNTR) typing [15].

The advent of Next Generation Sequencing has made it increasingly feasible to sequence and compare Whole Genome Sequences (WGS) in order to inform epidemiological analyses. WGS data provide the highest resolution, and therefore discriminatory power, for understanding the sampled system [21, 22]. Recently Glaser et al. [23] used WGS data to distinguish outbreaks carrying identical VNTR types, as well as identifying transmission within and between cattle and deer populations. Similar work in New Zealand has demonstrated the utility of WGS as a robust and highly discriminatory typing method (in prep: Price-Carter et al. 2017). Biek et al. [22] used WGS methods to examine bTB transmission in Northern Ireland, and demonstrated that badgers and livestock living in close proximity shared very similar *M. bovis* strains, suggesting that multiple inter-species transmission events had occurred.

Our research aimed to refine our understanding of the role of wildlife in the transmission and persistence of bTB across New Zealand and estimate the substitution rate of *M. bovis* in this system. Samples taken from infected cattle and wildlife provided *M. bovis* isolates for which WGS data was generated. In agreement with previous knowledge, wildlife species were implicated in the transmission and persistence of bTB infection in the sampled population. We found evidence of multiple

inter-species transmission events and estimated their force and direction. Estimating the transmission direction was found to be influenced by the sampling patterns. The availability of WGS data presented the opportunity to evaluate the use of WGS in routine typing. WGS methods were able to discriminate isolates to a finer resolution than REA typing, and there was good agreement between these typing methods. The utility of WGS techniques depends on the frequency with which mutations are fixed within the population. The estimated substitution rate was higher than those previously estimated for *M. bovis*.

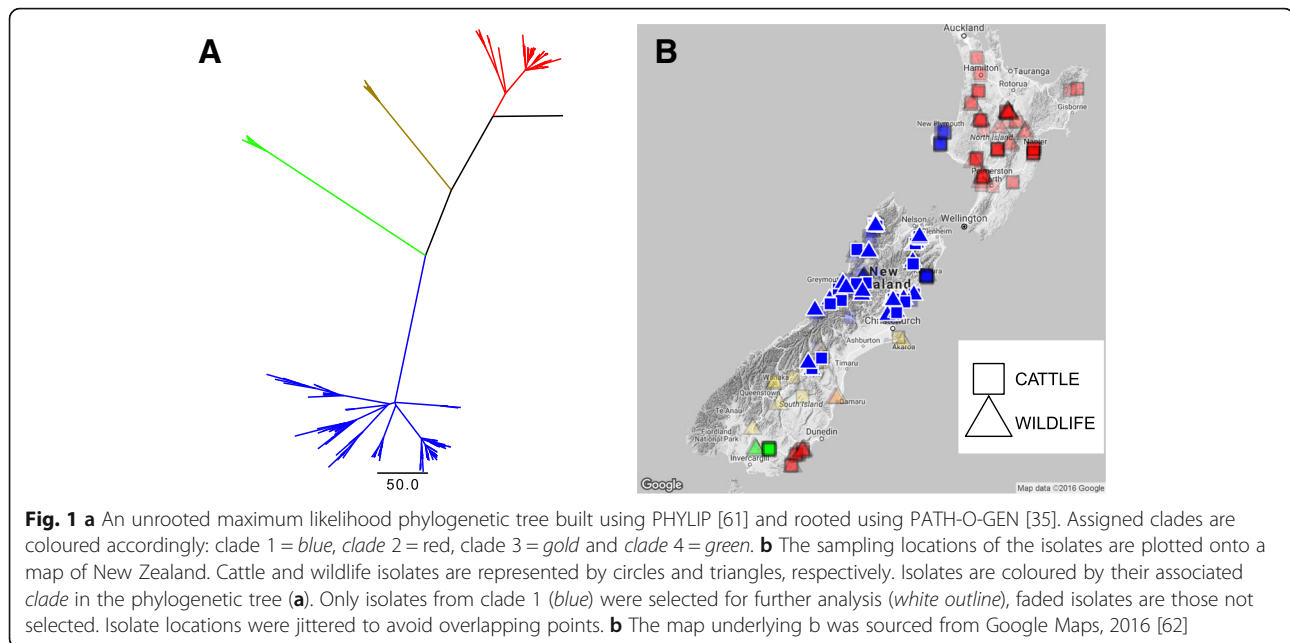
Methods

Sampling and isolate preparation

As part of the routine bTB surveillance in New Zealand, any cattle or wildlife suspected of *M. bovis* infection undergo a post-mortem examination, and if lesions are discovered a selection are investigated using culture and strain typing. Conventional tests (described in de Lisle et al. [24]) were used to positively identify *M. bovis* infection. Isolates were REA typed according to previously described methods [16, 25] and cultures were frozen and stored in the strain archive at AgResearch Ltd. Isolates from the archive were selected to provide a representative sample of the *M. bovis* population circulating in cattle and wildlife across New Zealand between 1985 and 2013 (Fig. 1). To create this representative sample, groups of isolates, from cattle and wildlife, of the same or closely related REA type from the same geographical region were selected from the Central North Island region, and the West Coast and Northeast regions of the South Island. The groups were selected to include all of the most frequently isolated REA types.

Selected isolates were re-cultured at AgResearch Ltd. to generate DNA (Deoxyribonucleic Acid) extracts for WGS. Frozen culture stocks were grown to mid log phase ($OD_{600} = 0.4–0.8$) in 5 ml of Tween/albumin broth [26] and sub-cultured into 100 ml of the same media for 5 to 11 weeks until the cultures reached stationary phase. Cell cultures were heat killed and stored at -20°C . Bacterial DNA was specifically separated from the other cellular components with a high salt hexadecyl trimethyl ammonium bromide (CTAB) extraction. DNA was then extracted with a chloroform/isoamyl alcohol method and quantified using Invitrogen Qubit fluorometry.

A selection of 90 DNA isolates were sequenced at the University of Glasgow Polyomics Facility using an Illumina MiSeq platform that produced 2×300 bp paired end reads per isolate. 17 additional isolates were sequenced at New Zealand Genomics Ltd. on a MiSeq platform that produced 2×250 bp paired end reads. The remaining isolates ($n = 204$) were sequenced at the Wellcome Trust Sanger Institute using an Illumina HiSeq that produced 2×100 bp paired end reads.



Processing sequencing data

The raw reads for each isolate were examined using FASTQC (v0.11.2 - Andrews [27]) to identify poor quality ends that were then trimmed using PRINSEQ (v0.20.4 - Schmieder & Edwards [28]). If adaptor sequences were present these were removed using TRIM-GALORE (v0.4.1 - Krueger [29]). Each isolate's trimmed reads were aligned to the *M. bovis* reference genome, AF2122/97 [30], using the freely available Burrows-Wheeler Alignment tool [31, 32]. The mean coverage (sites with Read Depth (DP) ≥ 20) for the isolates was 99% (2.5% Lower: 96.9, 97.5% Upper: 99.8).

Site information across the isolates was collated to allow the quality of individual sites to be assessed. Sites that fell within Proline-Glutamate (PE) and Proline-Proline-Glutamate (PPE) genes or annotated repeat regions were removed (Sampson [33]). Thereafter only Variant Positions (VPs), sites for which at least one of the isolates showed variation against the reference genome, were retained.

High quality sites were selected for subsequent analyses based on the Mapping Quality (MQ), High Quality base Depth (HQDP) and Read Depth (DP). Filters were designed using MQ, HQDP, DP, in addition to the support for the allele called (SUP), the site coverage across the isolates (COV), and the number of positions that separated SNPs (PROX). A filter sensitivity analysis was conducted in order to establish an optimal filter combination (See Additional file 1: Supplementary text 1.1). The following filters were selected: MQ ≥ 30 , HQDP ≥ 4 , DP ≥ 30 , SUP ≥ 0.95 , COV ≥ 0.7 , and PROX = 10.

Isolate selection

An early examination of the WGS data revealed that, although most isolates with the same Restriction Endonuclease Analysis (REA) type were very similar, several isolates were quite distinct from the others with the same REA type. These "outliers" were further investigated to determine whether they were mislabelled. Although it was not possible to re-examine these isolates with the REA typing method, potentially mislabelled samples were further examined with Variable Number Tandem Repeat (VNTR) assays. Specific REA types are known to be associated with specific VNTR types. VNTR assays were conducted (described in [15]) using a subset of VNTR loci that were likely to discriminate the isolates in question. For controls, a selection of isolates with similar sample numbers to the questionable isolates was also re-examined. If the determined VNTR types differed from what would have been expected based on previous analyses of these types [15], the isolate was considered to have been mislabelled. 15 of the 28 (14 suspects and 14 controls) isolates examined had VNTR loci that differed from what was expected. These 15 mislabelled isolates were removed from any further analyses (See Additional file 1: Supplementary text 1.2), leaving 296 isolates for further investigation.

Using the 296 isolates, a maximum likelihood phylogenetic tree was constructed in the program PHYLIP (v3.695 - Felsenstein [34]) and rooted using the program PATH-O-GEN (v1.4 - Rambaut [35]). For each isolate the sampling location (including latitude and longitude) and year (of sample submission), sampled species, and REA type were available. Using the maximum likelihood

tree and the available sampling information, a selection of spatially and temporally associated isolates were chosen from within clade 1 (Fig. 1a).

Although a large number of isolates were available for the current analyses, these isolates fell within highly distinct clades. Isolates from a single clade were selected to ensure a relatively recent common ancestor to the isolates analysed, and limit the effects of biases introduced by examining genetically distinct groups. Unique pairs of cattle and wildlife isolates were chosen from within strict spatial (40 km) and temporal (+/- 3 years) limits to reduce the impact of potential temporal and spatial sampling biases (Figs. 1b and 2). The spatial and temporal thresholds were chosen so as they were the minimum values necessary to retain a large enough sample size for further analyses. Using the spatial and temporal thresholds described, only Clade 1 had enough spatially and temporally associated isolates to warrant further analyses.

Clustering of inter-isolate genetic distances

The available data for the isolates-REA type, sampling location (district where the sampling took place) and sampled host - were used to define groups of isolates and the within- and between-group genetic distances were examined to determine whether there was an association. The concatenated sequence of VPs of each isolate was compared to one another to generate an inter-isolate genetic distance (using the p-distance-defined as the proportion of the sites that differ between two sequences).

The observed difference between the mean intra- and inter-group genetic distances was calculated where the groups were defined, separately, by host species sampled, sampling location and REA type. To determine whether each observed difference could have arisen by chance alone, the isolate data was shuffled and the difference recalculated. The shuffling was repeated 10,000 times to generate null distributions of observed differences. The associations were considered significant if the observed metric fell outside the lower (2.5%) and upper (97.5%) quantiles of the null distribution. Importantly, any species signature is likely to be nested within a spatial one, since regional localisation of bTB is known. To account for this, only comparisons that were between isolates sampled in the same district were included in the clustering analyses using the host species sampled.

Phylogenetic Analyses

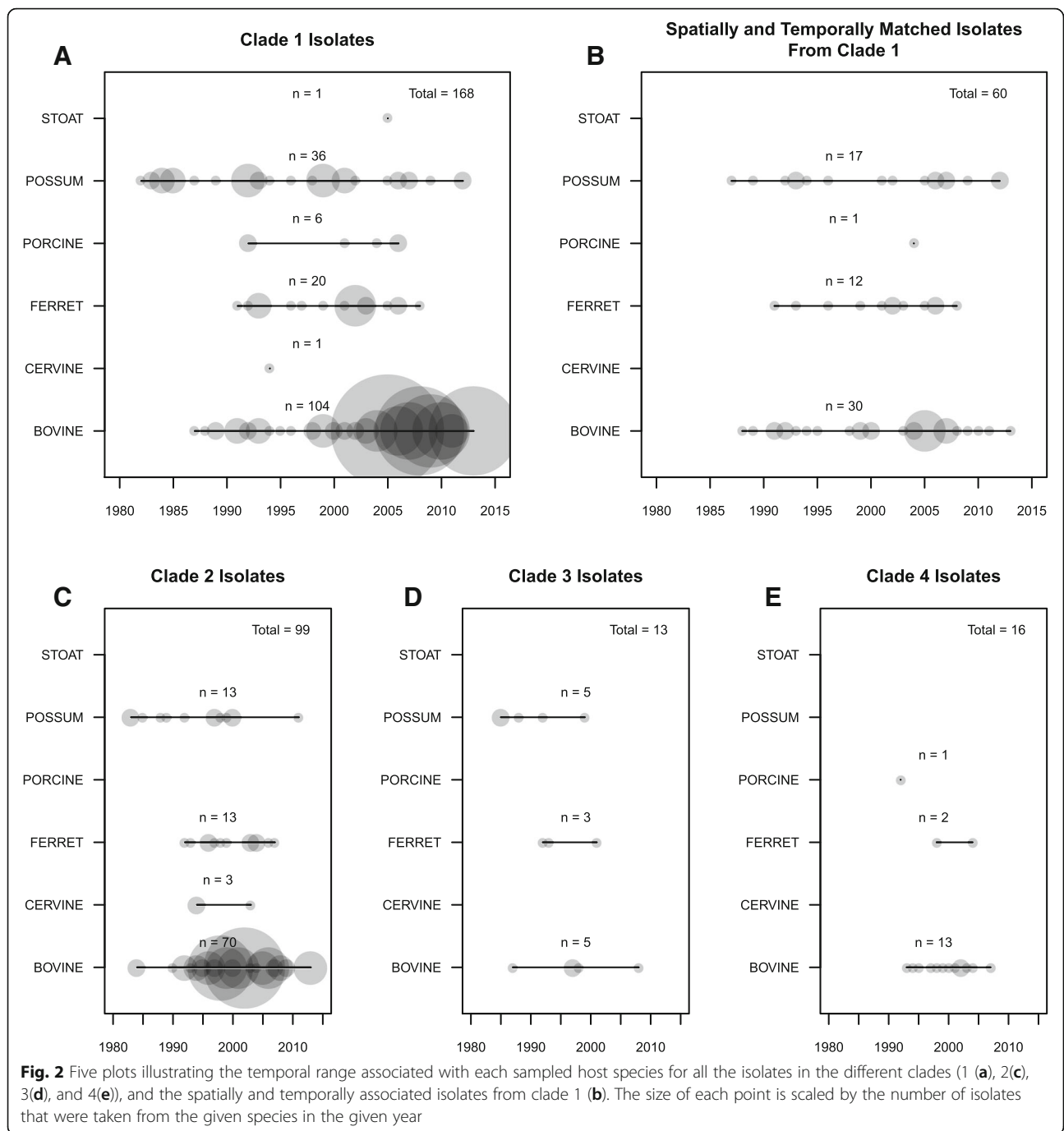
The Bayesian Evolutionary Analysis by Sampling Trees (BEAST v1.8.4 - Drummond & Rambaut [36]) software was used for a phylogenetic analysis of the isolates' sequences combined with their sampling years. BEAST was used to estimate the phylogenetic tree topology, substitution rate and date of the Most Recent Common Ancestor (MRCA) for the sampled *M. bovis* population.

A BEAST analysis requires the existence of a clock-like substitution process. Additional analyses, as conducted by Firth et al. [37], were used to examine whether a clock-like process could have produced the inter-isolate variation (See Additional file 1: Supplementary text 1.3).

Models selected in a BEAST analysis may significantly impact the results. Care must be taken to select appropriate models for the substitution process [38] and the underlying population dynamics [39]. A series of BEAST analyses were completed in a hierarchical fashion to explore the different models available; for each analysis a chain length of 500,000,000 steps, sampled every 50,000 steps, was used and three replicates were completed. Following the removal of a 10% burn-in, the posterior distributions were examined to determine which structure of BEAST analysis best described the isolate data. Different analyses were compared based upon the log likelihood scores, model convergence and posterior support of parameters (assessed using TRACER v1.6 [40]), path sampling and stepping stone analyses (See Additional file 1: Supplementary text 1.4). In addition, the biological feasibility of the results was examined for each analysis.

The selected BEAST analysis used the Hasegawa-Kishino-Yano (HKY) substitution model, a relaxed clock model, drawing from an exponential distribution, and the Gaussian Markov Random Field (GMRF) Bayesian Skygrid population model. The HKY substitution model allows variable base frequencies, transition and transversion rates to be estimated [41]. A relaxed clock model enabled the estimated substitution rate to vary across the branches of the phylogenetic tree; the extent of this variation was modelled using an exponential distribution. The GMRF Skygrid model is a flexible model that is able to estimate changing population dynamics over the course of a phylogenetic history [39]. In a BEAST analysis, population dynamics are estimated based on the structure of the phylogenetic tree according to coalescent theory [42].

An additional Discrete Ancestral Trait Mapping (DATM) analysis [38, 43] for two states was implemented in the BEAST analysis. According to the host species sampled, isolates were assigned either a cattle or wildlife state. Based upon the states of the tips of the phylogenetic tree (the isolates) the DATM estimates the ancestral states in the phylogeny, and as such the most likely sources of infection within the sampled *M. bovis* population. A comparison was made between a symmetric and asymmetric DATM analyses in BEAST using the spatially and temporally matched isolates. The former symmetric analysis refers to the state transition matrix being symmetric; this analysis estimates a single parameter (in a two state analysis), the transmission rate of the pathogen from one state to another. The asymmetric



analysis has two inter-state transmission parameters and as such can be used to determine whether there is a directional bias in the exchange; is the pathogen jumping from one population into another more often than in the other direction?

The influence of the selection of prior distributions for the parameters estimated in the BEAST analyses, described above, was investigated by running an analysis where the data were removed and only the prior distributions sampled. It was shown that the selected prior

distributions were conservative and that the data provided a strong signal for the parameter estimations of our model (See Additional file 1: Supplementary text 1.5).

Results

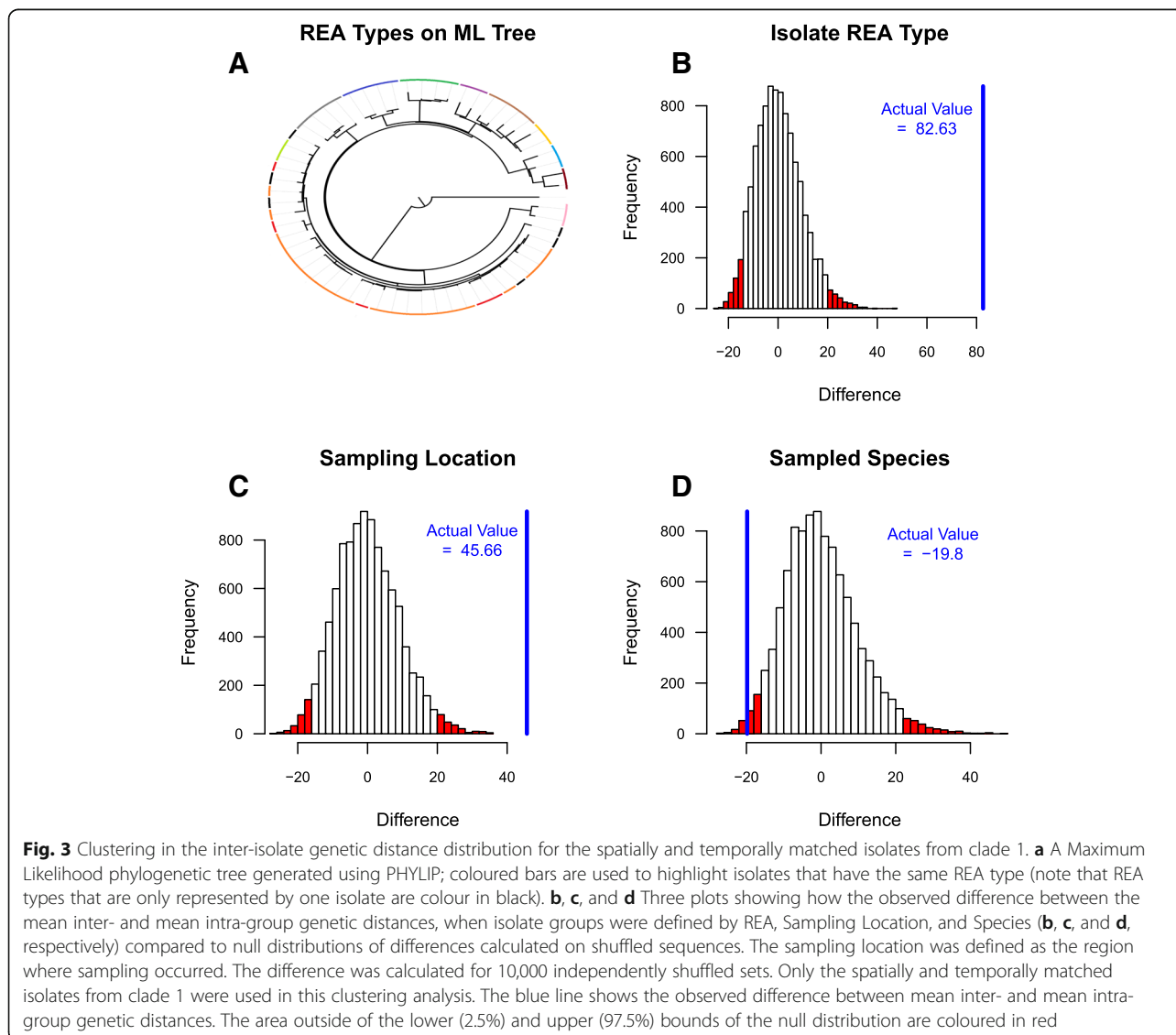
Structure in the sampled *M. bovis* population

There were four recognisably distinct clades formed by the 321 isolates sampled in New Zealand that were regionally localised (Fig. 1). A total of 3449 VPs were found. Long distance translocation and establishment

of new foci of infection was evident, when the genetic structure of the population was considered. Clade 2 (Fig. 1 – red), although mostly found in New Zealand's North Island, has an established foci of infection involving both cattle and wildlife on the South Island. Clade 1 (Fig. 1 – blue) isolates were mostly situated on the South Island of New Zealand, providing a densely sampled genetically similar set from which to select the spatially and temporally associated isolates for further analysis (Figs. 1 and 2). Clade 3 (Fig. 1 – gold) included eight wildlife and five cattle isolates, found across a broad spatial range in the southwest of New Zealand's South Island. Clade 4 (Fig. 1 – green) also included thirteen cattle and three wildlife isolates, which were sampled from two locations <20 km apart in the south of New Zealand's South Island.

Clustering of inter-isolate genetic distances

The inter-isolate genetic distance distribution of the spatially and temporally associated isolates from clade 1 was examined. Isolates of the same REA type were, on average, more genetically similar than those of different types. This difference was reflected in lower average within- than between-group genetic distances, when groups were defined by REA types (Fig. 3b). In addition, diversity was evident in the within-group distances demonstrating the added resolution of WGS data. The observed difference between the mean inter- and intra-group genetic distances was unlikely to have arisen by chance when the isolates were grouped by their REA type, sampling location or sampled species (Fig. 3b and c). In contrast to the lower within- than between-group genetic distances observed when groups were defined by



REA type or sampling location (as was demonstrated by the positive observed difference (Fig. 3b and c)), when groups were defined by the host species sampled, the within-group distances were higher than the between-group distances (Fig. 3d). These higher within-group distances resulted in a negative observed difference, which was unlikely to have arisen by chance as it fell just outside the 95% bounds of the generated null distribution. This negative difference may be caused by lower within-outbreak distances resulting from sampling local outbreaks (involving cattle and wildlife) that are separated in space.

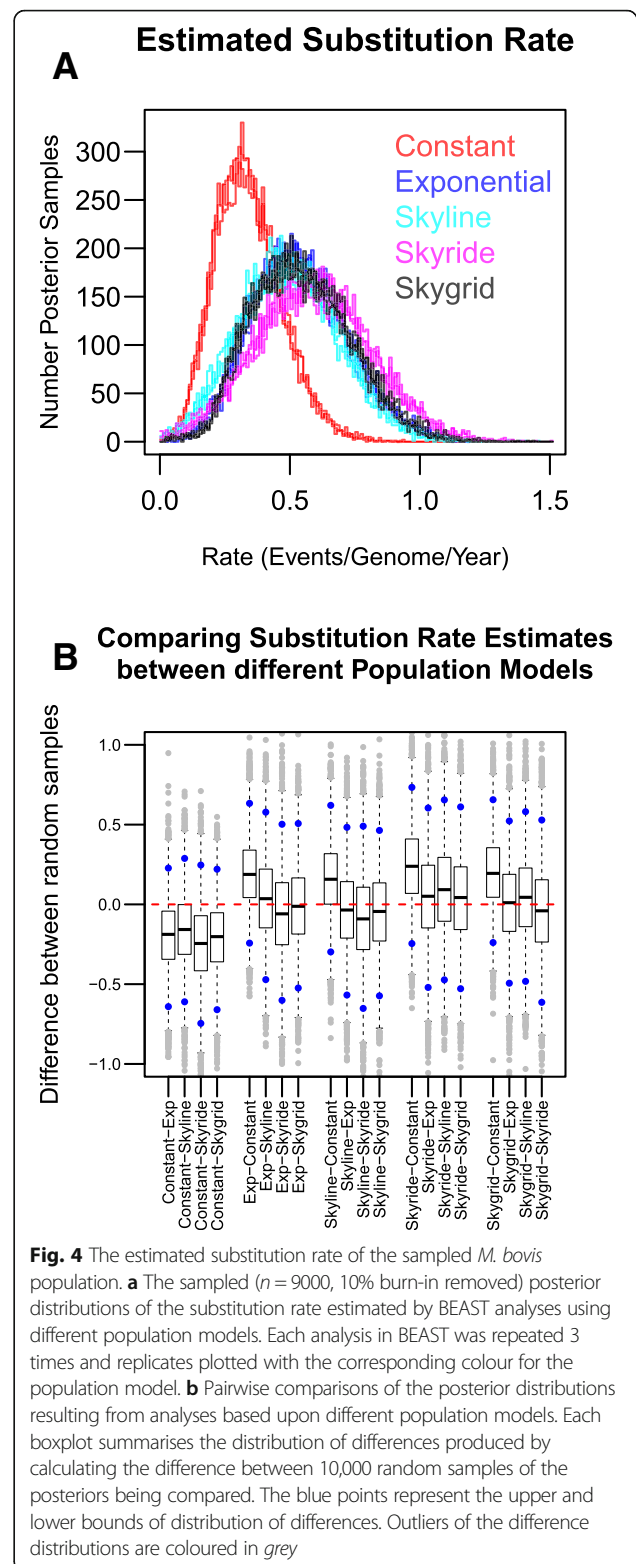
Substitution rate estimation

Using a bootstrapping procedure the posterior distributions resulting from BEAST analyses incorporating different population models were compared (Fig. 4b). For each pairwise posterior comparison, a distribution of differences was generated by calculating the difference between single point estimates, that were sampled proportionately from each of the two posterior distributions. If similar distributions are compared using this pairwise comparison, the calculated differences between point estimates drawn randomly from each distribution will be close to zero. The paired posterior distributions were not significantly different; the distribution of calculated differences resulting from each pairwise comparison overlapped with zero. The Skygrid population model, which had a high likelihood in the model selection procedures (See Additional file 1: Supplementary text 1.4) and agreed well with the other population models used (Fig. 4), estimated the substitution rate of the sampled *M. bovis* population to be 0.53 (2.5% Lower: 0.22, 97.5% Upper: 0.94) events per genome per year.

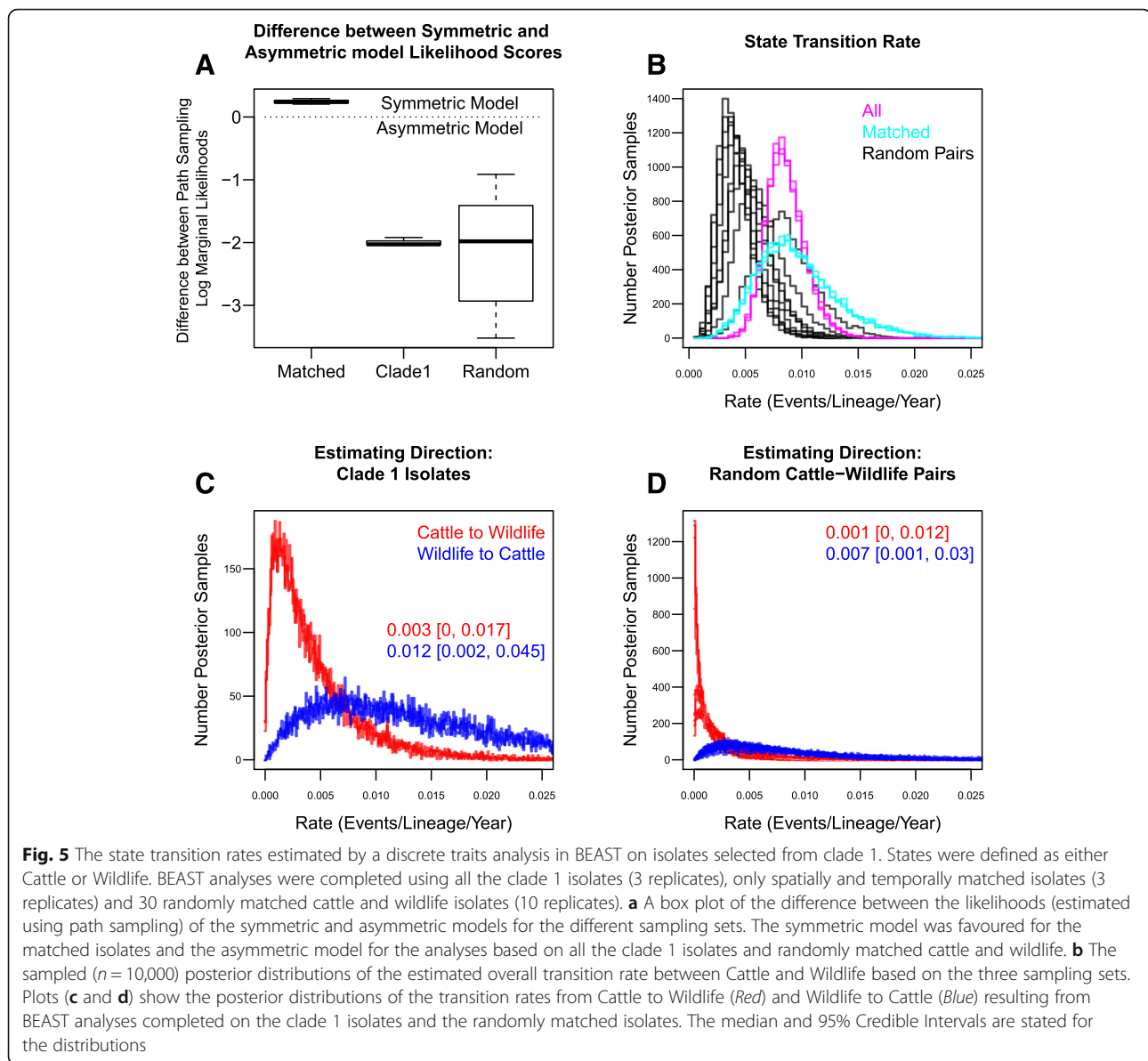
Using the Skygrid population model, the MRCA to the sampled *M. bovis* population was estimated to have been circulating in 1859 (2.5% Lower: 1525, 97.5% Upper: 1936). Binney et al. [44] recently established that a large number of cattle were imported into New Zealand in the 1860s, mostly originating from Australia and the United Kingdom. The structure of clade 1 and of the full maximum likelihood phylogeny (Fig. 1a) aren't indicative of a single introduction event into New Zealand. The sampling window used in this study was narrow, relative to the phylogenetic history of the sampled population. Via simulation it was shown that estimates of the substitution rate were robust to the shortening of the sampling window; estimates increasingly lacked precision but retained accuracy (data not shown).

Ancestral traits analysis

Different selections of isolates from clade 1 (all isolates, temporally and spatially matched isolates, or 30 random cattle and wildlife pairs) were used in separate DATM



BEAST analyses. According to the path sampling likelihood values, the symmetric model (equal rates from cattle to wildlife and vice versa) was favoured for the matched isolates (Fig. 5a). The asymmetric (different



rates) was favoured when the DATM analysis was based on all the clade 1 isolates or the randomly paired isolates (Fig. 5a). The DATM analyses were able to provide an estimate for the overall state transition rate (Fig. 5b). For the analyses based on all the clade 1 isolates or randomly matched isolates the asymmetric model provided directional estimates of the state transition rates (Fig. 5c and d). Using all isolates or the random cattle and wildlife pairs, a dominant direction of transmission from wildlife to cattle was estimated (Fig. 5c and d). Using the spatially and temporally matched isolates the symmetric model out-performed the asymmetric model and directional estimates weren't available. The difference in the support for the symmetric versus asymmetric model was a result of the isolates selected and therefore shows a

strong influence of sampling. Without knowing which sample set is most representative it is difficult to have confidence in the directional state transition rates.

Discussion

The current research suggests that *M. bovis* infection was being transmitted between the sampled wildlife and cattle populations. In Northern Ireland, where the role of badger populations is under investigation, WGS data has been used in an attempt to elucidate the mechanisms of persistence of bTB in cattle herds [22, 45]. High genetic similarity suggested recent transmission links between badger and cattle populations. Similarly, Glaser et al. [23], used WGS data to reveal exchange within and between cattle and deer populations in Minnesota.

By the end of June 2015, there were 39 infected cattle herds in New Zealand [11]. Whilst cattle movements remain a recognised cause of newly detected herd infections, wildlife are thought to be the main contributors. In the current research, isolates originating from cattle and wildlife sources were indistinguishable suggesting a high degree of exchange. A high degree of exchange was supported by the estimations of an overall inter-species rate. With New Zealand's low prevalence of bTB in livestock, despite being unable to estimate inter-species transmission direction in the current research, it would seem highly likely that wildlife populations are acting as maintenance reservoirs and as such should remain the target of the eradication campaign.

When investigating any epidemiological process using genetic data of a pathogen, the relative speed of that epidemiological process compared to the rate of change of the sampled pathogen must be considered [46]. Ideally, the sampling of a system of interest should reflect the underlying epidemiological processes, and not produce additional noise or biases. For example, if isolates are too distantly related (both genetically and epidemiologically) noise may dominate the signal of the epidemiological events of interest, making the estimation of these events difficult. In addition, it is important that the sampling of a system of interest is designed such that potential epidemiological events are likely to be captured and not masked by additional noise. For example, if highly distinct isolates result from the sampling, too many of the epidemiological events of interest may have occurred in the shared history of the isolates, making the estimation of these events difficult.

Here, the inter-species transmission rate was estimated. The difficulty encountered when estimating the direction of interspecies transmission may be a reflection of a high rate of exchange of *M. bovis* between cattle and wildlife estimated using a slowly evolving pathogen sampled from a broad genetic distribution.

The role of wildlife in the maintenance of bTB in New Zealand could provide an explanation for why the substitution rate estimated here was relatively high, in comparison to previously published estimates of the substitution rate for the *M. tuberculosis* complex

(Table 1). This difference will enhance the utility of genomic data for routine epidemiological investigations because it will allow for better estimates of the time of introductions of new infections into herds and wildlife populations and thus aid in the identification of likely sources of infection.

Most brushtail possums suffer an extensive *M. bovis* infection if exposed, and many will die within 6 months [47, 48]. In contrast, the majority of humans, cattle, and badgers suffer a localised latent TB infection [49–51]. Given that herd breakdowns in New Zealand are thought to be mainly the result of spill-over events from wildlife vectors [11, 20], the higher levels of replication during the more extensive infection in possums could result in an increased accumulation of mutations for the sampled *M. bovis* population.

Colangeli et al. [52] demonstrated that the likely lower rates of replication occurring during latent *M. tuberculosis* infection, in humans, resulted in significantly lower accumulation of mutations when compared to active infection. This research supports the theory that replication rates impact substitution rates and is consistent with other observations on host-level variability [53]. However, Ford et al. [54] were unable to find an effect of latency on the substitution rate of *M. tuberculosis* in infected Macaque monkeys, in an experimental setting, and so this area requires further study. Alternatively, the higher substitution rate could be the result of a lineage specific trait, such differences have been demonstrated in *M. tuberculosis* [55, 56].

The patterns of sampling and their influence on results of any analysis are an important consideration. Broad credible intervals were estimated around the substitution rate and date of the MRCA for the sampled population. The isolates analysed in the current research were sampled between 1987 and 2013; relative to the estimated root height (1859 [1525, 1936]), this sampling window is narrow. *M. bovis* is likely to have been circulating in New Zealand since the mid-1800s [12], therefore sampling early in this outbreak wasn't possible. Analyses based on simulated epidemics sampled using an increasingly late and narrow window, demonstrated that a narrow sampling window had a pronounced effect on the

Table 1 A comparison between estimates of the substitution rates (events per genome per year) taken from WGS analyses on *M. tuberculosis* and *M. bovis*, with the results of this study inserted in the final row

Published Source	Bacteria Species	Mean/Median	Lower	Upper	Host Sampled	Country
Walker et al., 2013	<i>M. tuberculosis</i>	0.5	0.3	0.7	Human	UK
Bryant et al., [63]	<i>M. tuberculosis</i>	0.3	NA	NA	Human	Netherlands
Roetzer et al., [21]	<i>M. tuberculosis</i>	0.4	0.3	0.7	Human	Germany
Biek et al., [22]	<i>M. bovis</i>	0.15	0.04	0.26	Cattle/Badger	UK
Trewby et al. 2015	<i>M. bovis</i>	0.2	0.1	0.3	Cattle/Badger	UK
Current Research	<i>M. bovis</i>	0.53	0.22	0.94	Cattle/Possum	New Zealand

precision of estimates but, importantly, little effect on the accuracy of parameter estimation in BEAST (data not shown).

In the DATM analysis a temporal bias was evident in the original set of clade 1 isolates (Fig. 2), with dense sampling of wildlife in early years and of cattle in later years, resulted in a dominant direction of spread from wildlife to cattle being estimated. Using the current data it wasn't possible to determine whether this dominance exists, and the sampling patterns are a true reflection of New Zealand's bTB system, or the directionality observed was an artefact of the sampling patterns.

The WGS data provided added resolution to the examination of bTB in New Zealand, distinguishing isolates sharing an identical REA type (Fig. 3a). The declining cost, added resolution, good agreement with REA typing, and evidence of a strong spatial signature all act to endorse the use of WGS typing in routine surveillance.

The utility of any typing method lies in its molecular clock speed; too quick and noise masks important events, too slow and important events could be missed [57, 58]. Both human- and bovine-TB are caused by slowly evolving, genetically conserved, bacteria [17, 30]. With such a recognisably slow rate of change it is unlikely that infection dynamics within or between individuals will result in significant genetic signatures. In contrast herd level signatures are likely to be present and of use in routine surveillance that targets herds [22, 23, 46].

Conclusions

In the current research it was shown that knowledge of epidemiology combined with WGS data can provide a means for in-depth investigations of bTB dynamics, shedding light on important and as yet unquantified features, such as the extent of inter-species transmission and the substitution rate. A caveat though, the influence of the sampling strategy used, should be thoroughly examined as to its potential impact on any findings. Targeted control of wildlife populations is part of New Zealand's eradication strategy [12] and wildlife were implicated in the current research. Identifying local persistence or introduction is the focus of bTB surveillance in New Zealand and regional localisation of isolates makes this possible. WGS data, despite the low substitution rate of *M. bovis*, adds resolution, decreasing the scale at which persistence versus introduction can be evaluated. In addition, an estimate of the substitution rate of *M. bovis* in New Zealand, however broad, will inform these evaluations. For routine surveillance, the resolution gained by using WGS data must be weighed against any increased costs, a decision that will be aided by the decreasing price of sequencing technologies.

Additional file

Additional file 1: Supplementary text 1.1: Filter Sensitivity Analysis. Supplementary text 1.2: Investigating Highly Distinct Isolates. Supplementary text 1.3: Temporal Signal. Supplementary text 1.4: Hierarchical Model Selection. Supplementary text 1.5: Influence of the Priors. **Table S1.** Results from investigating highly distinct isolates. **Table S2.** Results from hierarchical model selection. (DOCX 36 kb)

Abbreviations

bTB: Bovine tuberculosis; COV: Site Coverage across the isolates; CTAB: Hexadecyl trimethyl ammonium bromide; DATM: Discrete Ancestral Trait Mapping; DNA: Deoxyribonucleic Acid; DP: Read Depth; GMRF: Gaussian Markov Random Field; HKY: Hasegawa-Kishino-Yano; HQDP: High Quality base Depth; MQ: Mapping Quality; MRCA: Most Recent Common Ancestor; PE: Proline-Glutamate; PPE: Proline-Proline-Glutamate; PROX: The number of positions that separated SNPs; REA: Restriction Endonuclease Analysis; SNP: Single Nucleotide Polymorphism; SUP: Support for the allele called; VP: Variant Position; VNTR: Variable Number Tandem Repeat; VRA: Vector Risk Area; WGS: Whole Genome Sequenced

Acknowledgements

We thank AgResearch Ltd. and TBfree in New Zealand for providing the *M. bovis* samples and the associated meta-data. Thanks to New Zealand Genomics Ltd., the Sanger Institute and the University of Glasgow Polyomics Facility for sequencing *M. bovis* isolates.

Thank you to the Editor and anonymous reviewers for their helpful and constructive comments. Thank you to Joanna Crispell for help in the writing of the manuscript.

Funding

Joseph Crispell is funded under a BBSRC PhD studentship.

Availability of data and material

Any scripts used for this publication are freely available on Github at (programming languages-R, Perl, and Java): https://github.com/JosephCrisp/NewZealand_Tools/.

Additional sampling information is available at: https://github.com/JosephCrisp/NewZealand_SamplingInformation/.

The raw sequence files (FASTQ) were archived on the NCBI Sequence Read Archive and are available at: <https://www.ncbi.nlm.nih.gov/sra/SRP098533>.

The individual isolates can be accessed under the following Biosample accession numbers: SAMN06252081-SAMN06252374. The Bioproject accession number is: PRJNA363037.

Authors' contributions

JC designed and implemented the analyses and wrote the manuscript. RZ, SH, BP, MN, DC, GdL, PL, RB, SL, RK, and MP-C provided comments on the manuscript. BP, MN, DC, GdL, PL, and MP-C were involved in the selection of the isolates. RZ advised on the design and implementation of the analyses. SH provided sequenced isolates from the Sanger Institute. BP and MN provided additional information about where the isolates were sampled. DC and GdL were involved in the REA typing of the isolates. RB and SL provided technical advice about the phylogenetic analyses. RK and MP-C designed and advised on the implementation of the study. MP-C coordinated the sequencing of the isolates and conducted the additional VNTR assays. All authors read and approved the final manuscript.

Competing interests

The author's declare no competing interests.

Consent for publication

Not applicable.

Ethics approval and consent to participate

In all cases the *M. bovis* isolates used in the current research were sourced from archived isolates, which originally resulted from routine bTB control operations conducted in New Zealand.

M. bovis isolates from cattle were sourced from tissue samples taken from livestock at slaughter, as part of routine surveillance. Animals were

slaughtered in New Zealand slaughterhouses that complied with the animal welfare standards described in “Code of Welfare Commercial Slaughter” [59]. *M. bovis* isolates from wildlife were sourced from tissue samples. These tissue samples were collected during post-mortem examinations of wildlife procured via poisoning or trapping, as part of OSPRI’s operational control and/or surveillance program. Wildlife were killed in compliance with the standards described in “National Animal Ethics Advisory Committee Occasional Paper No 8” [60].

Author details

¹Institute of Biodiversity, Animal Health, and Comparative Medicine, University of Glasgow, Glasgow, Scotland G61 1QH, UK. ²Wellcome Trust Sanger Institute, Wellcome Genome Campus, Hinxton, Cambridge, UK. ³TBfree New Zealand, PO Box 3412, Wellington 6140, New Zealand. ⁴AgResearch, Hopkirk Research Centre, Palmerston North, New Zealand. ⁵Infection and Immunity Division, The Roslin Institute, University of Edinburgh, Easter Bush, Midlothian, Scotland, UK.

Received: 6 September 2016 Accepted: 9 February 2017

Published online: 16 February 2017

References

- Benavides JA, Cross PC, Luikart G, Creel S. Limitations to estimating bacterial cross-species transmission using genetic and genomic markers: Inferences from simulation modeling. *Evol Appl*. 2014;7:774–87. Available from: <http://doi.wiley.com/10.1111/eva.12173>.
- Haydon DT, Cleaveland S, Taylor LH, Laurenson MK. Identifying reservoirs of infection: A conceptual and practical challenge. *Emerg Infect Dis*. 2002;8:1468–73. Available from: <http://www.ncbi.nlm.nih.gov/pubmed/12498665>.
- Michel AL, Müller B, van Helden PD. *Mycobacterium bovis* at the animal-human interface: A problem, or not? *Vet Microbiol*. 2010;140:371–81. Available from: <http://www.ncbi.nlm.nih.gov/pubmed/19773134>.
- Cousins DV, Roberts JL. Australia’s campaign to eradicate bovine tuberculosis: The battle for freedom and beyond. *Tuberculosis*. 2001;81:5–15. Available from: <http://www.ncbi.nlm.nih.gov/pubmed/11463220>.
- Reviriego Gordejo FJ, Vermeersch JP. Towards eradication of bovine tuberculosis in the European Union. *Vet Microbiol*. 2006;112:101–9. Available from: <http://www.ncbi.nlm.nih.gov/pubmed/16388921>.
- Hall S. Official bovine tuberculosis-free status in Scotland. *Vet Rec*. 2010;166:245–6. Available from: <http://www.ncbi.nlm.nih.gov/pubmed/20173112>.
- Comer LAL. The role of wild animal populations in the epidemiology of tuberculosis in domestic animals: How to assess the risk. *Vet Microbiol*. 2006;112:303–12. Available from: <http://linkinghub.elsevier.com/retrieve/pii/S0378113505004050>.
- Gortazar C, Cowan P. Dealing with TB in wildlife. *Epidemiol Infect*. 2013;141:1339–41. Available from: http://www.journals.cambridge.org/abstract_S0950268813000599.
- Morris RS, Pfeiffer DU. Directions and issues in bovine tuberculosis epidemiology and control in New Zealand. *N Z Vet J*. 1995;43:256–65. Available from: <http://www.ncbi.nlm.nih.gov/pubmed/16031864>.
- Nugent G, Gortazar C, Knowles G. The epidemiology of *Mycobacterium bovis* in wild deer and feral pigs and their roles in the establishment and spread of bovine tuberculosis in New Zealand wildlife. *N Z Vet J*. 2015;63 Suppl 1:54–67. Available from: <http://www.tandfonline.com/doi/full/10.1080/00480169.2014.963792>.
- OSPRI. Annual Report 2014–2015. 2015.
- Livingstone PG, Hancox N, Nugent G, de Lisle GW. Toward eradication: The effect of *Mycobacterium bovis* infection in wildlife on the evolution and future direction of bovine tuberculosis management in New Zealand. *N Z Vet J*. 2014;63 Suppl 1:4–18. Available from: <http://www.ncbi.nlm.nih.gov/pubmed/25273888>.
- Livingstone PG, Hancox N, Nugent G, Mackereth G, Hutchings SA. Development of the New Zealand strategy for local eradication of tuberculosis from wildlife and livestock. *N Z Vet J*. 2015;2015:98–107. Available from: <http://dx.doi.org/10.1080/00480169.2015.1013581>.
- Skuce RA, McDowell SW, Mallon TR, Luke B, Breadon EL, Lagan PL, et al. Discrimination of isolates of *Mycobacterium bovis* in Northern Ireland on the basis of variable numbers of tandem repeats (VNTRs). *Vet Rec*. 2005;157:501–4. Available from: <http://www.ncbi.nlm.nih.gov/pubmed/16244231%5Cn>. <http://veterinaryrecord.bmj.com/content/157/17/501.abstract>.
- Price-Carter M, Rooker S, Collins DM. Comparison of 45 variable number tandem repeat (VNTR) and two direct repeat (DR) assays to restriction endonuclease analysis for typing isolates of *Mycobacterium bovis*. *Vet Microbiol Elsevier BV*. 2011;150:107–14. Available from: <http://dx.doi.org/10.1016/j.jvetmic.2011.01.012>.
- Collins DM. DNA typing of *Mycobacterium bovis* strains from the Castlepoint area of the Wairarapa. *N Z Vet J*. 1999;47:207–9. Available from: <http://www.tandfonline.com/doi/abs/10.1080/00480169.1999.36145>.
- Smith NH, Gordon SV, de la Rua-Domenech R, Clifton-Hadley RS, Hewinson RG. Bottlenecks and broomsticks: The molecular evolution of *Mycobacterium bovis*. *Nat. Rev. Microbiol*. 2006;4:670–81.
- Navarro Y, Romero B, Copano MF, Bouza E, Domínguez L, de Juan L, et al. Multiple sampling and discriminatory fingerprinting reveals clonally complex and compartmentalized infections by *M. bovis* in cattle. *Vet Microbiol*. 2015;175:99–104. Available from: <http://linkinghub.elsevier.com/retrieve/pii/S0378113514005161>.
- de Lisle GW, Yates GF, Collins DM, MacKenzie RW, Crews KB, Walker R. A study of bovine tuberculosis in domestic animals and wildlife in the MacKenzie Basin and surrounding areas using DNA fingerprinting. *N Z Vet J*. 1995;43:266–71. Available from: <http://www.ncbi.nlm.nih.gov/pubmed/16031865>.
- Buddle B, de Lisle G, Griffin J, Hutchings S. Epidemiology, diagnostics, and management of tuberculosis in domestic cattle and deer in New Zealand in the face of a wildlife reservoir. *N Z Vet J*. 2015;63:19–27. Available from: <http://www.ncbi.nlm.nih.gov/pubmed/24992203>.
- Roetzer A, Diel R, Kohl TA, Rückert C, Nübel U, Blom J, et al. Whole genome sequencing versus traditional genotyping for investigation of a *Mycobacterium tuberculosis* outbreak: A longitudinal molecular epidemiological study. *PLoS Med*. 2013;10:1–12. Available from: <http://www.ncbi.nlm.nih.gov/pubmed/23424287>.
- Biek R, O’Hare A, Wright D, Mallon T, McCormick C, Orton RJ, et al. Whole genome sequencing reveals local transmission patterns of *Mycobacterium bovis* in sympatric cattle and badger populations. *PLoS Pathog*. 2012;8:e1003008.
- Glaser L, Carstensen M, Shaw S, Robbe-Austerman S, Wunschmann A, Gear D, et al. Descriptive epidemiology and whole genome sequencing analysis for an outbreak of bovine tuberculosis in beef cattle and white-tailed deer in northwestern Minnesota. *PLoS One*. 2016;11:1–21. Available from: <http://dx.doi.org/10.1371/journal.pone.0145735>.
- de Lisle GW, Pamela Kawakami R, Yates GF, Collins DM. Isolation of *Mycobacterium bovis* and other mycobacterial species from ferrets and stoats. *Vet Microbiol*. 2008;132:402–7. Available from: <http://linkinghub.elsevier.com/retrieve/pii/S037811350800206X>.
- Collins DM, De Lisle GW, Gabric DM. Geographic distribution of restriction types of *Mycobacterium bovis* isolates from brush-tailed possums (*Trichosurus vulpecula*) in New Zealand. *J Hyg (Lond)*. 1986;96:431–8. Available from: <http://www.ncbi.nlm.nih.gov/pubmed/3016075>.
- Vestal, AL. Procedures for the isolation and identification of Mycobacteria. Dept. of Health, Education, and Welfare, Public Health Service, Center for Disease Control, Bureau of Laboratories, Training and Consultation Division. 1975.
- Andrews S. FastQC: A quality control tool for high throughput sequence data. 2010.
- Schmieder R, Edwards R. Quality control and preprocessing of metagenomic datasets. *Bioinformatics*. 2011;27:863–4. Available from: <http://www.ncbi.nlm.nih.gov/pubmed/21278185>.
- Krueger F. Trim Galore. A wrapper tool around Cutadapt and FastQC to consistently apply quality and adapter trimming to FastQ files. 2015.
- Garnier T, Eiglmeier K, Camus J-C, Medina N, Mansoor H, Pryor M, et al. The complete genome sequence of *Mycobacterium bovis*. *Proc Natl Acad Sci U S A*. 2003;100:7877–82. Available from: <http://www.ncbi.nlm.nih.gov/pubmed/12788972>.
- Li H, Durbin R. Fast and accurate short read alignment with Burrows-Wheeler transform. *Bioinformatics*. 2009;25:1754–60. Available from: <http://www.ncbi.nlm.nih.gov/pubmed/19451168>.
- Li H, Handsaker B, Wysoker A, Fennell T, Ruan J, Homer N, et al. The Sequence Alignment/Map format and SAMtools. *Bioinformatics*. 2009;25:2078–9. Available from: <http://www.ncbi.nlm.nih.gov/pubmed/19505943>.
- Sampson SL. Mycobacterial PE/PPE proteins at the host-pathogen interface. *Clin. Dev. Immunol*. 2011; Available from: <http://www.ncbi.nlm.nih.gov/pubmed/21318182>.
- Felsenstein J. PHYLIP - Phylogeny inference package - v3.2. *Cladistics*. 1989, p. 164–6. Available from: <http://doi.wiley.com/10.1111/j.1096-0031.1989.tb00562.x>.
- Rambaut A. Path-O-Gen: Temporal signal investigation tool v1.4. 2009.

36. Drummond AJ, Rambaut A. BEAST: Bayesian Evolutionary Analysis by Sampling Trees. *BMC Evol Biol.* 2007;7:214. Available from: <http://bmcevolbiol.biomedcentral.com/articles/10.1186/1471-2148-7-214>.
37. Firth C, Kitchen A, Shapiro B, Suchard MA, Holmes EC, Rambaut A. Using time-structured data to estimate evolutionary rates of double-stranded DNA viruses. *Mol Biol Evol.* 2010;27:2038–51.
38. Lemey P, Rambaut A, Drummond AJ, Suchard MA. Bayesian phylogeography finds its roots. *PLoS Comput Biol.* 2009;5:1–16. Available from: <http://www.ncbi.nlm.nih.gov/pubmed/19779555>.
39. Ho SYW, Shapiro B. Skyline-plot methods for estimating demographic history from nucleotide sequences. *Mol Ecol Resour.* 2011;11:423–34. Available from: <http://www.ncbi.nlm.nih.gov/pubmed/21481200>.
40. Rambaut A, Drummond AJ. Tracer v1. 4. 2007.
41. Hasegawa M, Kishino H, Yano T. Dating of the human-ape splitting by a molecular clock of mitochondrial DNA. *J Mol Evol.* 1985;22:160–74. Available from: <http://www.ncbi.nlm.nih.gov/pubmed/3934395>.
42. Gill MS, Lemey P, Faria NR, Rambaut A, Shapiro B, Suchard MA. Improving Bayesian population dynamics inference: A coalescent-based model for multiple loci. *Mol Biol Evol.* 2013;30:713–24. Available from: <http://www.ncbi.nlm.nih.gov/pubmed/23180580>.
43. Pagel M, Meade A, Barker D. Bayesian estimation of ancestral character states on phylogenies. *Syst Biol.* 2004;53:673–84. Available from: <http://www.ncbi.nlm.nih.gov/pubmed/15545248>.
44. Binney B, Biggs P, Carter P, Holland B, French N. Quantification of historical livestock importation into New Zealand 1860–1979. *N Z Vet J.* 2014;62:309–14. Available from: <http://www.tandfonline.com/doi/abs/10.1080/00480169.2014.914861>.
45. Trewby H, Wright D, Breadon EL, Lycett SJ, Mallon TR, McCormick C, et al. Use of bacterial whole-genome sequencing to investigate local persistence and spread in bovine tuberculosis. *Epidemics Elsevier BV.* 2016;14:26–35. Available from: <http://dx.doi.org/10.1016/j.epidem.2015.08.003>.
46. Biek R, Pybus OG, Lloyd-Smith JO, Didelot X. Measurably evolving pathogens in the genomic era. *Trends Ecol. Evol.* [Internet]. Elsevier Ltd. 2015;30:306–13. Available from: <http://dx.doi.org/10.1016/j.tree.2015.03.009>.
47. Cooke MM, Buddle BM, Aldwell FE, McMurray DN, Alley MR. The pathogenesis of experimental endo-bronchial *Mycobacterium bovis* infection in brushtail possums (*Trichosurus vulpecula*). *N Z Vet J.* 1999;47:187–92. Available from: <http://www.tandfonline.com/doi/abs/10.1080/00480169.1999.36141>.
48. Nugent G, Buddle B, Knowles G. Epidemiology and control of *Mycobacterium bovis* infection in brushtail possums (*Trichosurus vulpecula*), the primary wildlife host of bovine tuberculosis in New Zealand. *N Z Vet J.* 2015;63:28–41. Available from: <http://www.tandfonline.com/doi/full/10.1080/00480169.2014.963791>.
49. Flynn JL, Chan J. Tuberculosis: Latency and reactivation. *Infect Immun.* 2001; 69:4195–201.
50. Cassidy JP. The pathogenesis and pathology of bovine tuberculosis with insights from studies of tuberculosis in humans and laboratory animal models. *Vet Microbiol* [Internet]. 2006;112:151–61. Available from: <http://linkinghub.elsevier.com/retrieve/pii/S0378113505003895>.
51. Roper T. Badger. HarperCollins UK. 2010.
52. Colangeli R, Arcus VL, Cursons RT, Ruthe A, Karalus N, Coley K, et al. Whole genome sequencing of *Mycobacterium tuberculosis* reveals slow growth and low mutation rates during latent infections in humans. Kaushal D, editor. *PLoS One.* 2014;9:1–9. Available from: <http://dx.plos.org/10.1371/journal.pone.0091024>.
53. Walker TM, Ip CLC, Harrell RH, Evans JT, Kapatai G, Dedicoat MJ, et al. Whole-genome sequencing to delineate *Mycobacterium tuberculosis* outbreaks: A retrospective observational study. *Lancet Infect Dis.* 2012;13(2):137–46.
54. Ford CB, Lin PL, Chase MR, Shah RR, Iartchouk O, Galagan J, et al. Use of whole genome sequencing to estimate the mutation rate of *Mycobacterium tuberculosis* during latent infection. *Nat Genet* [Internet]. 2011;43:482–6. Available from: <http://www.pubmedcentral.nih.gov/articlerender.fcgi?artid=3101871&tool=pmcentrez&rendertype=abstract>.
55. Mestre O, Luo T, Dos Vultos T, Kremer K, Murray A, Namouchi A, et al. Phylogeny of *Mycobacterium tuberculosis* Beijing strains constructed from polymorphisms in genes involved in DNA replication, recombination and repair. *PLoS One.* 2011;6:e16020. Available from: <http://www.ncbi.nlm.nih.gov/pubmed/21283803ok>.
56. O'Neill MB, Mortimer TD, O'Neill MB, Mortimer TD, Pepperell CS. Diversity of *Mycobacterium tuberculosis* across evolutionary scales. *PLoS Pathog.* 2015;11: 1–48. Available from: <http://www.ncbi.nlm.nih.gov/pubmed/26562841>.
57. Croucher NJ, Didelot X. The application of genomics to tracing bacterial pathogen transmission. *Curr Opin Microbiol Elsevier Ltd.* 2015;23:62–7. Available from: <http://dx.doi.org/10.1016/j.mib.2014.11.004>.
58. Kao RR, Haydon DT, Lycett SJ, Murcia PR. Supersize me: How whole-genome sequencing and big data are transforming epidemiology. *Trends Microbiol Elsevier Ltd.* 2014;22:282–91. Available from: <http://dx.doi.org/10.1016/j.tim.2014.02.011>.
59. New Zealand Government. Code of Welfare Commercial Slaughter. 2016. Available from: https://www.mpi.govt.nz/mpisearch/?site-search=Code+of+Welfare+Commercial+Slaughter&action_doPageSearch=.
60. National Animal Ethics Advisory Committee. Research on vertebrate pesticides and traps: Do wild animals benefit? 2012. Available from: <https://www.mpi.govt.nz/protection-and-response/animal-welfare/overview/national-animal-ethics-advisory-committee/naeac-publications/>.
61. Felsenstein J. PHYLIP-Phylogeny inference package (Version 3.2). *Cladistics.* 1989;5:163–6.
62. Google. Google Maps. 2016.
63. Bryant JM, Schürch AC, van Deutekom H, Harris SR, de Beer JL, de Jager V, et al. Inferring patient to patient transmission of *Mycobacterium tuberculosis* from whole genome sequencing data. *BMC Infect Dis* [Internet]. 2013;13:1–12. Available from: <https://bmcinfectdis.biomedcentral.com/articles/10.1186/1471-2334-13-110>.

Submit your next manuscript to BioMed Central and we will help you at every step:

- We accept pre-submission inquiries
- Our selector tool helps you to find the most relevant journal
- We provide round the clock customer support
- Convenient online submission
- Thorough peer review
- Inclusion in PubMed and all major indexing services
- Maximum visibility for your research

Submit your manuscript at
www.biomedcentral.com/submit

