

RESEARCH ARTICLE

Open Access



Longer trinucleotide repeats of androgen receptor are associated with higher testosterone and low oxytocin levels in diabetic premature ejaculatory dysfunction patients

Haroon Latif Khan¹, Shahzad Bhatti^{1,2,3,4*}, Sana Abbas¹, Yousaf Latif Khan¹, Rosa Maria Marquez Gonzalez⁵, Muhammad Aslamkhan², Gerardo Rodriguez Gonzalez⁶ and Hikmet Hakan Aydin⁷

Abstract

Background: Despite its worldwide high occurrence, the obscurity regarding the description, epidemiology and management of premature ejaculation remains provocative. It is well established that male premature ejaculatory dysfunction is an increasing problem due to spontaneous ejaculation across a variety of general and clinical subjects. The main goal of this study was to determine the relationships between trinucleotide repeats of the androgen receptor (AR), sex steroids, and pituitary hormones with sexual function in men with type 2 diabetes mellitus (DM) and reported with acquired premature ejaculation (PE).

Methods: A total of 150 normal and 250 PE + DM subjects were enrolled in this study. Each subject was invited to fill out an elaborative questionnaire to acquire precise selective information regarding BMI, duration of PE + DM, self-reported Intra-Vaginal Ejaculatory Latency Time (IELT), sexual and mental health status by using the premature ejaculation diagnostic tool (PEDT) and Beck Depression Inventory-II (BDI-II). Pearson's correlation analysis was used to analyze the relationship between clinical, hormonal, and genetic variables. Ward's minimum variance cluster analysis and principal component analysis were used for evaluation of dependence between genetic, clinical, and demographic parameters.

Results: The patients who have the lowest number of (≤ 21) (CAG)n repeats have higher serum oxytocin levels (114.2 pg/ml; $n = 54$, 43.2%) than the controls (69.18 pg/ml; $n = 22$, 17.6%) and the patients with the highest (≥ 26) number of (CAG)n repeats (62.9 pg/ml; $n = 108$, 43.2%).

On the other hand, patients who have the highest numbers of (CAG)n repeats (≥ 26) have higher serum testosterone (6.1 ng/ml; $n = 108$, 43.2% of cohort) lower prolactin (3.01 ng/ml; $n = 108$, 43.2% of cohort) levels than the controls and patients with the lowest numbers (≤ 21) of (CAG)n repeats and their TSH (1.53 mIU/L, $P < 0.05$) levels are lower than those of controls. In the Pearson correlation model, self-estimated IELT demonstrated significantly negative correlation with both (CAG)n and (GCC)n repeats ($r = -0.16$, $p = 0.0001$; $r = -0.19$, $p = 0.0001$) respectively. These repeats have positive correlation with PEDT ($r = 0.28$, $p = 0.0001$; $r = 0.24$, $p = 0.0001$,

(Continued on next page)

* Correspondence: drshahzadbhatti@yahoo.com; drshahzadbhatti@uhs.edu.pk

¹Lahore Institute of fertility and Endocrinology, Hameed Latif Hospital, 14 – Abu Bakar Block, New Garden Town, Lahore, Pakistan

²Department of Human Genetics and Molecular biology, University of Health Sciences, Lahore -54600, Pakistan

Full list of author information is available at the end of the article



(Continued from previous page)

whole model) and inversely correlated with BDI-II ($r = -0.25$, $p = 0.0001$).

Conclusion: This study indicates that androgen receptor polymorphism modulates the endocrine effect on ejaculatory reflex and depends strongly on its "cofactors". Moreover, our results also confirmed an association between long tri-nucleotide repeats of androgen receptor, sex steroids, pituitary, and thyroid hormones in relation to acquired premature ejaculatory dysfunction in diabetic patients. However, endocrine regulation of PE reflex is a complex phenomenon that requires further investigation.

Keywords: Androgen receptor, Testosterone, Oxytocin, Premature ejaculation, Diabetes mellitus

Résumé

Contexte: Malgré une fréquence élevée partout dans le monde de l'éjaculation précoce (EP), le caractère obscur de sa description, de son épidémiologie et de sa prise en charge reste provocateur. Il est avéré que la dysfonction masculine représentée par l'EP est un problème croissant en raison de l'occurrence de l'éjaculation spontanée dans de nombreux sujets généraux et cliniques. L'objectif principal de la présente étude était de déterminer les relations entre le nombre de répétitions de trinucleotides du récepteur aux androgènes (RA), les stéroïdes sexuels et les hormones hypophysaires d'une part, et la fonction sexuelle d'hommes qui présentent un Diabète de type 2 (DT2) et qui rapportent une EP acquise.

Sujets et Méthodes: Un total de 150 sujets normaux et de 250 sujets qui présentaient une EP et un DT2 ont été enrôlés dans cette étude. Il a été demandé à chaque sujet de remplir un questionnaire approprié au recueil sélectif d'informations précises concernant l'indice de masse corporelle, la durée de l'EP+ DT2, le temps de latence éjaculatoire intra vaginal (IELT) auto-rapporté, ainsi que les statuts sexuel et mental sur la base de l'outil diagnostique de l'éjaculation précoce (PEDT) et de l'inventaire de dépression de Beck-II (BDI-II). Les coefficients de corrélation de Pearson ont été utilisés pour évaluer les relations entre les paramètres génétiques, cliniques et démographiques. L'analyse de variance minimale des groupements de Ward et l'analyse en composante principale ont été utilisées pour évaluer la dépendance entre les paramètres génétiques, clinique et démographiques.

Résultats: Les sujets qui avaient le plus faible nombre (≤ 21) de répétitions de (CAG) n présentaient des taux sériques plus élevés d'ocytocine (114.2 pg/ml; $n = 54$, 43.2%) que les témoins (69.18 pg/ml; $n = 22$, 17.6%) et que les sujets avec le nombre le plus élevé (≥ 26) de répétitions de (CAG) n (62.9 pg/ml; $n = 108$, 43.2%). D'un autre côté, les sujets qui présentaient le nombre le plus élevé (≥ 26) de répétitions de (CAG) n avaient des taux sériques de testostérone plus élevés (6.1ng/ml; $n = 108$, 43.2% de la cohorte) et de prolactine plus bas (3.01ng/ml; $n = 108$, 43.2% de la cohorte) que les témoins et que les sujets qui présentaient le nombre le plus bas (≥ 21) de répétitions de (CAG) n ; et leurs taux sériques de TSH était plus bas (1.53 mIU/L; $p < 0.05$) que ceux des témoins. Dans le modèle de corrélation de Pearson, l'IELT auto-rapporté présentait une corrélation négative avec les répétitions à la fois des triplets (CAG) n ($r = -0.16$, $p = 0.0001$) et des triplets (GGC) n ($r = -0.19$, $p = 0.0001$). Ces répétitions étaient respectivement corrélées positivement avec PEDT ($r = 0.28$, $p = 0.0001$; $r = 0.24$, $p = 0.0001$, modèle global) et inversement corrélées avec BDI-II ($r = -0.25$, $p = 0.0001$).

Conclusion: Cette étude montre que le polymorphisme du récepteur aux androgènes module l'effet endocrinien sur le réflexe éjaculatoire et qu'il est étroitement dépendant de ses « cofacteurs ». De plus, les présents résultats confirment aussi l'association entre les longues répétitions de trinucleotides du récepteur aux androgènes, les stéroïdes sexuels, les hormones pituitaires et thyroïdiennes en relation avec une dysfonction éjaculatoire précoce acquise chez les patients diabétiques. La régulation endocrine du réflexe de l'EP est toutefois un phénomène complexe qui nécessite de futures investigations.

Mots-clés: Récepteur aux androgènes, Testostérone, Ocytocine, Ejaculation précoce, Diabète de type 2

Background

The control of male ejaculatory function is a mechanistic, self-efficacious, multifunctional process comprising inputs of the sympathetic neuronal system, interconnected contractions of ductus deferens and reduced resistance to ductus ejaculatory closure [1]. An ejaculatory dysfunction is a heterogeneous group of dysfunctions that might be an outcome of interruption at any point in the sequential cascade of discharge, evacuation and sexual climax [2].

Among men, premature ejaculation (PE) or premature climax is the most prevalent form that has the greatest impact on the male sexual dysfunction and referred as a culture based symptom of the society that is self-described, self-distinguished and self-ranked [3, 4]. It is a condition of short ejaculatory latency, characterized by rapid recurrent ejaculation with insignificant sexual motivation prior, on or soon after heterosexual vaginal penetration or lack of control upon ejaculation [5]. PE classification system has been broadly established as primary PE (Lifelong PE) and secondary PE (acquired during the life). Primary PE presents since a start from the sexual activity with nearly every sexual partner and also encountered during self-masturbation [6]. While, acquired PE is the most common condition, with high prevalence rate (30%) and frequently reported in different epidemiological studies [7, 8].

The updated guidelines for PE proposed by International Society for Sexual Medicine (ISSM) are based on three critical points I) Brief Intra-Vaginal Ejaculatory Latency Time (IELT), spans from penetration to ejaculation i.e. a short involuntary ejaculatory episode that should be less than one minute; however, IELT that spans from 1 to 2 min is considered short if it exerts significant distress on both partners or one of them. II) Loss of self-control about the timing of ejaculation or inability to control the onset of ejaculation III) Unsatisfaction, fear, and severity of psychological distress related to ejaculatory dysfunction [9].

Androgen receptor (AR) is likely responsible for androgen mediating signaling and plays a key role in the sexual differentiation during embryonic development, and growth of secondary sex characters [10]. Human AR gene is located on the long arm of X-chromosome (q11–12). It consists of 8 exons which are more than 90 kb long and transcribed into fully functional protein of about 919 amino acids [11]. Androgen receptor gene has two polymorphic tandem repeats characterized by varied numbers of (CAG)_n and (GGC)_n repeats, located on the opposite ends of exon 1. AR protein functions as an androgen hormone- activated transcription factor which consists of three functional domains: N-terminal transactivation domain (NTD), DNA binding domain (DBD) and Ligand binding domain (LBD). The NTD of the AR

protein harbor varied numbers of poly-glutamine (poly-Q) and poly-glycine (poly-G) stretches, which are transcribed by the (CAG)_n and (GGC)_n repeats [12]. On binding the ligand, AR separates from accessory proteins, translocates into the nucleoplasm, dimerizes and starts the transcription of the AR- responsive elements [13]. Longer (CAG)_n repeats are responsible for compromised AR transcriptional activity whereas, very short repeats are the leading cause of prostate cancer, however, the role of the long (GGC)_n repeats is still uncertain [14].

The obligatory role of endocrine regulation in acquired PE has been well-known over the past decades. The androgens and hypophyseal hormones have been considered as potentially important candidates in the modulation of ejaculatory mechanism [15]. Among androgens testosterone (TT) plays a pivotal role in the maintenance of accessory organs and is involved specifically in the regulation of normal spermatogenesis. It affects the control of ejaculatory mechanism both on central and peripheral levels. It also has a facilitatory role in the control of ejaculatory reflex, sexual behavior and copulation frequency [16].

Diabetes mellitus (DM) and thyroid disorders are believed to play a vital role in the development of PE, both describe the two most recurrent endocrinopathies found in clinical practice. Moreover, these disorders trigger the lifelong adverse effects on self-perception and mental health of men by altering the central serotonergic pathways, resulting in the diminished ejaculation control practice [17]. A recent study has pointed out that PE may be differentially affected by pituitary hormones such as oxytocin, prolactin as well as thyrotropin at various levels of ejaculatory process [18]. Therefore, the aim of present study is to investigate any possible association between tri-nucleotide repeats of androgen receptor, sex steroids and pituitary hormones in a cohort of diabetic patients consulting for premature ejaculatory dysfunction.

Methods

Subjects

A total of 250 diabetic patients consulting for premature ejaculatory dysfunction were selected: 120 outpatients diagnosed with mild to moderate comorbid erectile dysfunction (ED). Firstly, these patients were treated for ED but when they continue to have PE, they were included in this study. Control group consists of 150 non-diabetic subjects with normal IELT (> 4 min) and normal International index of erectile function (IIEF-15) score.

The study was approved by the Institutional Ethical Committee (IEC) in accordance with Helsinki Declarations. Personal interviews were conducted to get the information regarding patient's age, onset and duration of PE, self-reported Intra-Vaginal Ejaculatory Latency Time (IELT) and prevalence of any congenital disease. Sexual

and mental health status was evaluated by using the premature ejaculation diagnostic tool (PEDT) and Beck Depression Inventory-II (BDI-II), after obtaining consent from each contributor. Moreover, a clinical investigator physically examined the subjects before taking blood samples.

Inclusion criteria

Subjects between the age of 30 to 60 years were selected, according to the following criteria: i) normal urine albumin to creatinine ratio (<30 mg/g) on spot urine, ii) normal ejaculation experiences iii) acquired PE for at least more than six months iv) monogamous v) detailed drug treatment and had no cause of organic PE vi) devoid of anatomical anomalies, vii) experience morning stiffness with no history of using selective serotonin reuptake inhibitors viii) continuous sexual relationship for at least twelve months ix) trying for intercourse more than once per week x) had no psychiatric disorder and absent perceived ejaculatory control, met the DSM-IV-TR criteria for PE, had IELT \leq 3 min [19].

Exclusion criteria

Patients with any congenital defect, hypogonadism, TSH levels outside reference range (0.4–4.5 mIU/L), urogenital surgery, chronic prostatitis, any sexually transmitted disease, habitual to use ejaculation delaying pills, sprays, condoms, psychological and mental illness, alcoholic addiction, and infectious disease were excluded from the study. Moreover, those patients whose female partners had anorgasmia, inactive sexual desire, and pain (vaginismus) disorders were not included in this study.

Assessment of the polymorphic (CAG)n and (GGC)n repeats copy number

Genomic DNA was extracted from peripheral blood by using revised salting out method [20]. AR exon 1 repeats (CAG)n and (GGC)n were amplified from genomic DNA in 50 μ l reaction mixture, having 10 ng genomic DNA, 10 μ M (2.5 mmol) MgCl₂, 0.5 μ l of each primer and AmpliTaq Gold® (Applied Bios systems, USA) master mix were used according to the manufacturer's instructions. Amplification of (CAG)n repeats has been done by forward primer sequence GTGGTTGCTCCCGCAAGTTTCC and reverse primer GCTCCCACTTCCTCCAAGGACAATTA. While the automated sequencing has been done through GCTGTGAAGGTTGCTGTTCCCTC; for (GGC)n repeats forward primer was CAGCAAGAGACTAGCCCCAG and reverse was CCAGAACACAGAGTGACTCTGCC. (GGC) repeats sequenced with primer GGACTGGGATAGGGCACTCTGCTCAACC [21]. PCR extension was achieved using BioRad™ MJ Mini thermal cycler (Applied Bios systems, USA) under standard conditions: initial denaturation at 95 °C for 10 min, followed by 35 cycles of 94 °C for

Table 1 Baseline demographics, Clinical and hormonal characteristics of diabetic premature ejaculatory dysfunction patients and normal study cohort

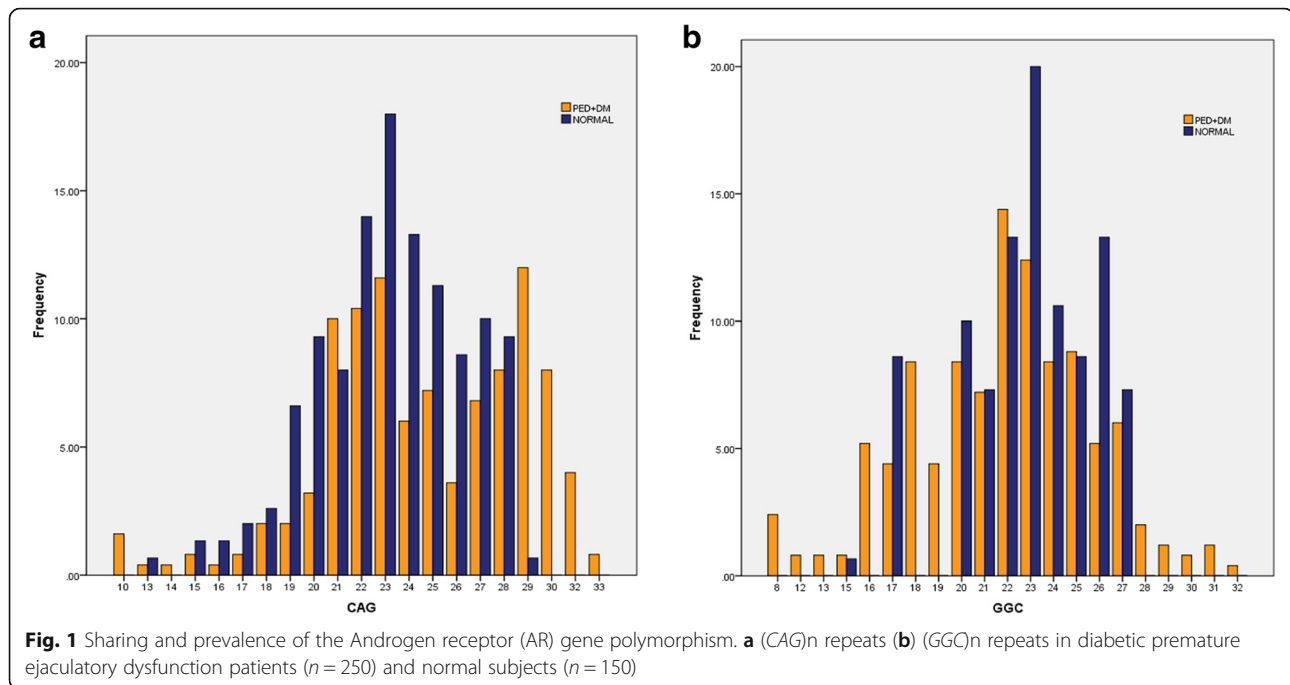
Variables	Subjects with PE + DM (n = 250) Mean \pm SD	Control Subjects (n = 150) Mean \pm SD	ρ^*
Clinical Parameters			
(CAG)n repeats	22.0 \pm 5.34	21.4 \pm 6.3	NS
(GGC)n repeats	22.01 \pm 4.36	22.0 \pm 7.2	NS
Age (years)	45.0 \pm 10.1	45.3 \pm 7.5	NS
BMI (kg/m ²)	31.5 \pm 4.0	29.43 \pm 3.99	NS
Blood collection time (8–10 AM) /30 mint	8.79 \pm 2.59	9.29 \pm 6.34	NS
HbA _{1c} (%)	7.01 \pm 2.41	3.85 \pm 1.05	< 0.001
Diabetes duration (years)	8.25 \pm 4.59	–	–
Hormonal Assays			
Oxytocin (pg/ml)	87.9 \pm 25.2	69.4 \pm 23.6	< 0.001
Prolactin (ng/ml)	5.05 \pm 2.31	7.1 \pm 1.62	< 0.001
TSH (mIU/L)	1.56 \pm 2.1	3.19 \pm 1.6	< 0.001
Total Testosterone (ng/ml)	4.76 \pm 1.52	3.63 \pm 1.26	< 0.001
Premature Ejaculation Assessments			
PEDT	18.7 \pm 3.81	7.21 \pm 3.56	< 0.001
Self-estimated IELT (s)	121 \pm 7.69	314.8 \pm 28.36	< 0.001
Depression Assessments			
BDI-II	48 \pm 9.40	8.7 \pm 3.12	< 0.001
Sexual Assessments			
IIEF-15	44.3 \pm 9.60	49.3 \pm 2.8	NS

PE: Premature Ejaculatory dysfunction; DM: Diabetes mellitus type II; NS Not significant; BMI Body mass index; TSH Thyroid stimulating hormone; PEDT Premature ejaculation diagnostic tool; BDI-II Beck's Depression Inventory-II; IELT Intravaginal ejaculatory latency time; IIEF-15 International index of Erectile Dysfunction-15
Data have shown as mean \pm SD. ρ^* Mann-Whitney; $p < 0.05$ was considered statistically significant

3 min, annealing at 59 °C for 30 s, extension at 72 °C for 1 min and final extension at 72 °C for 10 min. ExoSAP-IT® (USB, Cleveland, OH, USA) was employed for refinement of PCR product. Sequencing was carried out by 3500 Genetic Analyzer (Applied Biosystems, Inc.) by using Big Dye™ Terminator version 3.1 cycle sequencing kit (Applied Biosystems) according to the manufacturer's instructions.

Estimation of clinical parameters

Clinical parameters such as height and weight were recorded to compute the body mass index (BMI) according to standard protocol [22]. Glycated hemoglobin (HbA_{1c}) was determined by Menarini Analyzer (Hb 9210 Menarini Diagnostics, UK).



Valuation of endocrine dimensions

Blood samples were collected between 8 to 10 am from cubital vein and serum was separated instantly and stored at -20°C till the performance of hormonal assays including oxytocin, prolactin, testosterone, and TSH through electrochemiluminescence immunoassay, in accordance with manufacturer's instructions (Elecsys[®] Roche Diagnostics, Indianapolis, USA).

Evaluation of sexual and mental performance

Sexual performance was estimated according to the International Index of Erectile Function-15 (IIEF-15), which includes 5 domains: erectile function (items; 1, 2,3,4,5 and 15), sexual desire (items; 11 and 12), intercourse satisfaction (items; 6–8), overall satisfaction (items; 13 and 14). According to the score, erectile function (EF) can be normal = 26–30, slightly impaired = 17–25, moderately impaired = 11–16, or severely impaired ≤ 11 . Other parameters were evaluated, such as sexual desire (SD) ranging from score 2–10, intercourse satisfaction (IS) estimated from 0 to 15, Orgasm (OR) ranging 0–10 and overall satisfaction (OS) ranging from 2 to 10 score [23]. The incidence of PE is being determined according to the guidelines provided by The European Association of Urology (EAU). PEDT was assessed by using a questionnaire including five items, minimal stimulation, distress, interpersonal difficulties, self-control, and frequency. A score of ≤ 9 excludes PE [24]. The Degree of depression was calculated by BDI-II (Beck Depression Inventory-II) questionnaire according to following scoring criteria, 0–13 = minimal range, i.e.

no depression, 14–19 = mild depression, 20–28 = moderate depression, 29–63 = severe depression [25].

Statistical analysis

Data are presented as mean with standard deviation and as median with interquartile range (IQR) for subgroups due to the number of patients. Clinical parameters, hormonal assays, premature ejaculation assessments, depression assessments and sexual assessments were compared between the PE + DM group and the control group using the nonparametric Mann-Whitney test. Kruskal-Wallis / two-tailed test was performed to find the outcome differences in the distribution of values across the three subgroups: the short CAG (≤ 21), medium CAG (22–25) and long CAG (≥ 26) repeats of PE + DM patients and entire control samples. Pearson correlation analysis was used to analyze the relationships among clinical, hormonal, and genetic variables. Finally, the dependence between genetic, clinical, and demographic parameters was evaluated using Ward's minimum variance cluster analysis and principal component analysis.

Statistical analysis was done using statistical package SPSS (version 21; SPSS Inc., Chicago, IL, USA) and XLSTAT 2017 software. The significant statistical difference was considered $p < 0.05$.

Results

Characteristics of the diabetic premature ejaculatory dysfunction patients

The detailed characteristics of PE patients are given in the Table 1. Comparisons between patients and controls show

Table 2 Clinical and sexual parameters of subjects with PE + DM and normal group based on Androgen receptor (CAG)n repeats

Subjects with PE + DM <i>n</i> = 250	Control subjects <i>n</i> = 150			<i>Kruskal-Wallis</i> = <i>P</i> *	CAG Long stretches (≥ 26) <i>n</i> = 43	CAG Medium stretches (22–25) <i>n</i> = 85	CAG short stretches (≤ 21) <i>n</i> = 22
	CAG Long stretches (≥ 26) <i>n</i> = 108	CAG Medium stretches (22–25) <i>n</i> = 88	CAG short stretches (≤ 21) <i>n</i> = 54				
Clinical Parameter							
Age (years)	45 (35–55)	43.5 (32–58)	45 (30–60)	NS	45 (30–60)	46 (32–60)	45 (30–60)
BMI (Kg/m ²)	31 (30–32)	31.6 (29.3–33.9)	32.05 (30.1–34.0)	NS	31.1 (28.6–33.6)	31.3 (28.9–33.7)	31.9 (28.85–35.01)
Blood Sampling Time (8–10 Am)	9.00 (8.00–10)	8.65 (8.00–9.30)	8.72 (8.15–9.30)	NS	9.50 (9.00–10)	9.57 (9.15–10)	8.80 (8.30–9.30)
Diabetes duration (years)	8.30 (4.5–12.1)	7.85(2.2–13.5)	9.67 (6.37–12.98)	NS	9.3 (4.21–14.56)	8.4 (4.4–12.5)	7.5 (3.3–11.8)
HbA _{1c} (%)	6.95 (6–7.9)	6.95 (5.9–8.00)	7.1 (6.1–8.1)	< 0.0001	3.8 (3.2–4.5)	3.7 (3.1–4.3)	3.9 (3.3–4.6)
Hormonal Assays							
Oxytocin (pg/ml)	62.9(43.1–82.8)	89.9 (69.9–99.8)	114.2 (99–129.5)	< 0.0001	70.12 (58.1–82.1)	68.85 (56.4–81.3)	69.18 (57.1–81.2)
Prolactin (ng/ml)	3.01 (2.3–4.8)	5.23 (4.01–6.46)	6.89 (4.7–8.01)	< 0.0001	7.12 (5.98–8.4)	7.03 (5.71–8.40)	7.23 (5.5–8.9)
Total Testosterone (ng/ml)	6.1 (5.4–6.8)	4.8 (4.4–5.36)	3.4 (3.1–3.8)	< 0.0001	3.9 (3.7–4.1)	3.3 (3.0–3.7)	3.6 (3.1–4.2)
TSH (mIU/L)	1.53 (1–2.1)	1.6 (1–2.02)	1.6 (1–2.02)	< 0.0001	3.15 (2.5–3.8)	3.15 (2.5–3.8)	3.15 (2.5–3.8)
Premature Ejaculation Assessments							
PEDT	18.8 (17.8–19.8)	18.8 (11.4–26.1)	18.5 (11.2–5.8)	< 0.0001	7.02 (5.1–9.0)	7.23 (5.4–9.0)	7.4 (6.2–8.6)
Self-estimated IELT (s)	100 (25–175) #	114 (40–188) #	119 (59–179)	< 0.0001	315 (190–440)	317 (125–510)	314 (188–440)
Depression Assessments							
BDI-II	45 (35–55) #	48 (38–58) #	51 (42–60)	< 0.0001	8.75 (4.5–13)	8.7 (4.4–13)	8.75 (4.5–13)
Sexual Assessments							
EF	19 (18–20)	19.5 (17–22)	29.5 (29–30)	NS	26.5 (26–27)	27 (26–28)	26.5 (26–27)
OR	5 (3–6)	5 (1–9)	5 (1–9)	NS	5 (3–7)	5 (3–7)	6 (3–9)
SD	4 (2–6)	6 (4–8)	6 (4–8)	NS	5.5 (3–8)	5 (1–9)	6 (4–8)
OS	4(2–6)	4.5 (3–6)	6.5 (5–8)	NS	5 (4–6)	6 (4–8)	4.5 (3–6)
IS	2 (1–3)	3 (1–5)	2 (1–3)	< 0.0001	6 (4–8)	7 (6–8)	6 (3–9)
IIEF-15- Score	34 (26–41)	38 (26–58)	49 (33–58)	< 0.0001	48 (40–56)	50 (40–60)	49 (39–59)

PE Premature Ejaculatory dysfunction; DM Diabetes mellitus type II BMI Body mass index; TSH Thyroid stimulating hormone; PEDT Premature ejaculation diagnostic tool; IELT Intravaginal ejaculatory latency time; BDI-II Beck's Depression Inventory II; EF Erectile function; OR Orgasmic function; SD Sexual desire; OS Overall satisfaction; IS Intercourse satisfaction; IIEF-15 International index of Erectile Dysfunction-15. Kruskal-Wallis test was used to assess the distribution of values across the subgroups based on the length of CAG repeats

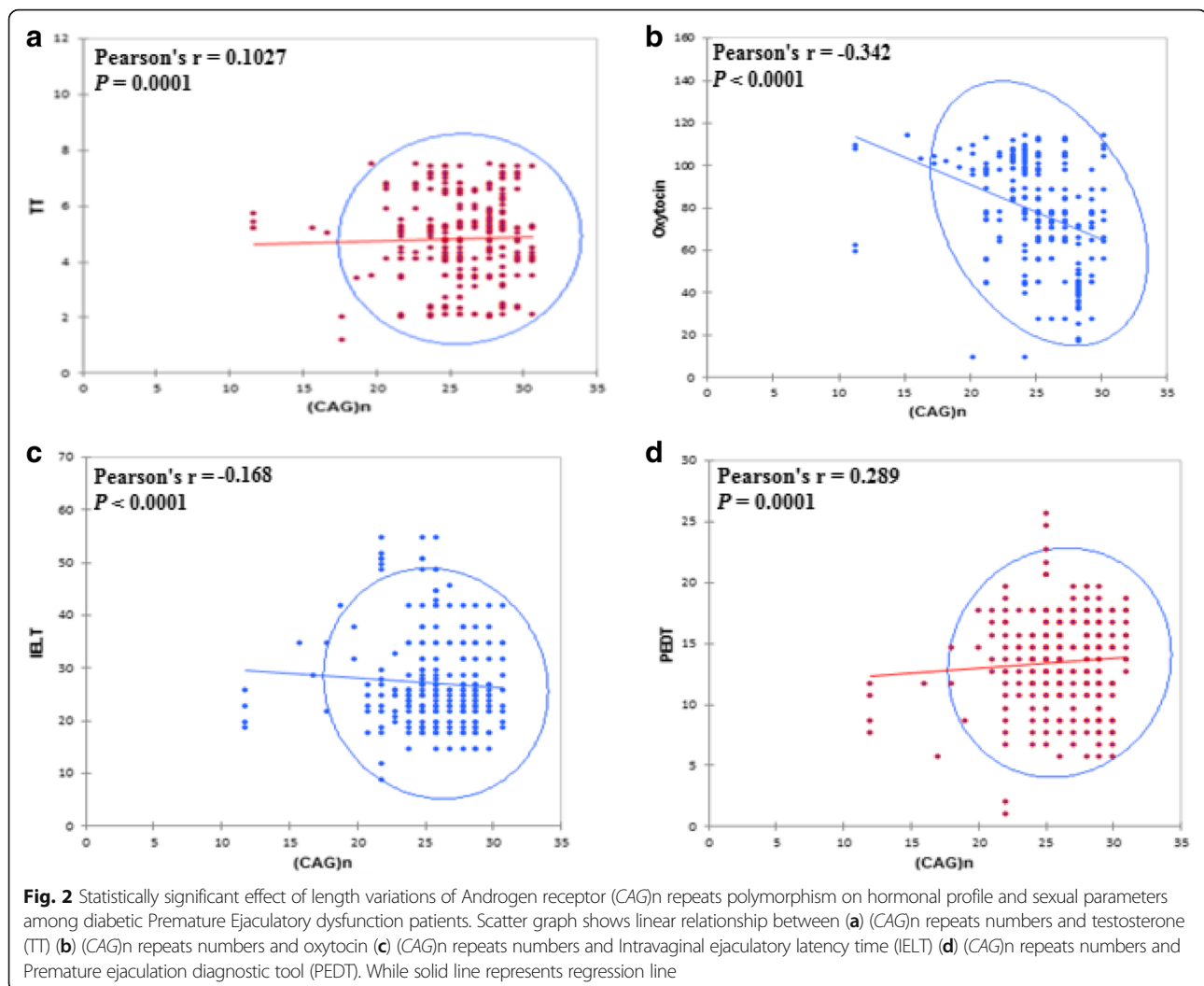
Data are presented as median (interquartile range). Significant differences among PE + DM subgroups are shown in bold ($P < 0.001$). # ($P < 0.05$) shows that a result is significantly different from only one of the other PE + DM subgroups. * $p < 0.0167$ (Kruskal-Wallis/two tailed test with Bonferroni correction) means differences between PE + DM subgroups and entire control group. No statistical difference was found between 3 subgroups (the short, medium, and long CAG) of controls

significant differences. In addition to the expected difference regarding indicators of PE, patients have significantly higher oxytocin, lower PRL, and TSH respectively. Figure 1 shows the ranges of the number of (CAG)n and (GGC)n repeats in patients and controls, the highest and the lowest number of repeats are found among the patients. (CAG)n repeats range from 10 to 33 with a mean of 22.0 ± 5.34 and median of 22, whereas (GGC)n repeats range from 8 to 32 repeats with a mean of 22.01 ± 4.36 and median 22. The subjects with long (CAG)n repeats trend to have longer (GGC)n repeats. Mean age of PE subjects and control group was not different and ranged between 45.0 ± 10.1 to 45.3 ± 7.5 respectively. However, PE

subjects were more likely to be obese (BMI = 31.5 ± 4.0) than control subjects (29.43 ± 3.99).

Longer trinucleotide (CAG)n repeats of the androgen receptor is associated with higher testosterone and low oxytocin

The categorization of the study subjects was shown in Table 2 that was based on the length of (CAG)n repeats i.e. short CAG (≤ 21), medium CAG ((22–25) and long CAG (≥ 26) repeats. The patients who have the lowest number of (≤ 21) (CAG)n repeats have higher serum oxytocin levels (114.2 pg/ml; $n = 54$, $p < 0.05$) than the controls (69.18 pg/ml; $p < 0.05$) and the patients with the highest (≥ 26) number of (CAG)n repeats (62.9 pg/ml; n



= 108, Mann-Whitney U-test, $p < 0.0001$). On the other hand, patients who have the highest numbers of (*CAG*)n stretches (≥ 26) have higher serum testosterone (6.1 ng/ml; $n = 108$, $p < 0.05$) lower prolactin (3.01 ng/ml; $n = 108$, $p < 0.05$) and thyrotropin (1.53 mIU/L, $p < 0.05$) levels than the controls. There is also a significant difference with the other subgroups of patients, especially regarding IIEF-15 score in patients with long *CAG* (≥ 26) repeats, particularly in comparison with patients with short *CAG* (≤ 21).

The significant effect of length variations of the androgen receptor (*CAG*)n repeats polymorphism on hormonal profile and sexual parameters was depicted in Fig. 2 which shows that the long (*CAG*)n repeats have a positive correlation with testosterone and negative correlation with oxytocin. Among the analyzed PE patients, no statistically significant difference was found for the association of different (*GGC*)n polymorphic repeats length with oxytocin, total testosterone, TSH and IIEF-15- Score (Table 3).

Association of trinucleotide repeats with sexual parameters

Studying the correlations between (*CAG*)n repeats and the other variables in the patients' group shows that the highest numbers of (*CAG*)n repeats are related to the highest testosterone levels, the lowest oxytocin levels, the highest PEDT and the lowest IELT, BDI-II, IS, and IIEF-15 scores. When the same study is performed with the number of (*GGC*)n repeats, no significant correlations are observed with the hormonal variables, but significant correlations are still found with PEDT and IELT (i.e. indicators of premature ejaculation), and BDI-II (indicator of depression), not with IIEF-15 score (indicator of erectile function) (see Table 4). Oxytocin and testosterone were inversely correlated with self-estimated IELT ($r = -0.019$, $p = 0.0001$; $r = -0.024$, $p = 0.0001$) and IIEF-15 ($r = -0.302$; $p = 0.0001$, $r = -0.009$ $p = 0.001$). Based on this finding oxytocin and testosterone are potent predictors of sexual function (Table 5).

Another substantial aspect of this study was inspecting the data in such a way as to highlight their similarities

Table 3 Clinical and sexual parameters of subjects with PE + DM and normal group based on Androgen receptor (GGC)n repeats

Subjects with PE + DM n = 250	Control subjects n = 125					
	GGC Long stretches (≥26) n = 42	GGC Medium stretches (22–25) n = 110	GGC short stretches (≤21) n = 98	GGC Long stretches (≥26) n = 31	GGC Medium stretches (22–25) n = 79	GGC short stretches (≤21) n = 40
Clinical Parameter						
Age (years)	45 (35–55)	43.5 (32–58)	45 (30–60)	45 (30–60)	46 (32–60)	45 (30–60)
BMI (Kg/m ²)	32.45 (30.8–34.1)	32.25 (30.5–34.0)	31 (30–32)	31.25 (28.9–33.6)	30.8 (27.9–33.7)	31.9 (28.85–35.01)
Blood Sampling Time (8–10 Am)	9.50 (9.00–10)	9.57 (9.15–10)	8.72 (8.15–9.30)	9.00 (8.00–10)	8.65 (8.00–9.30)	8.80 (8.30–9.30)
Diabetes duration (years)	9.3 (4.21–14.56)	7.85(2.2–13.5)	8.30 (4.5–12.1)	9.67 (6.37–12.98)	8.4 (4.4–12.5)	7.5 (3.3–11.8)
HbA _{1c} (%)	7.05 (6.2–7.9)*	7.2 (6.4–8.00)*	7.1 (6.3–7.9)*	4.2 (3.9–4.6)	4.1 (3.7–4.5)	4.1 (3.4–4.9)
Hormonal Assays						
Oxytocin (pg/ml)	79.1 (51.9–106.3)	82.85 (65.9–99.8)	83.8 (68.4–97.8)	79.35 (76.5–82.2)	80 (78.9–81.1)	79.5 (77.9–81.2)
Prolactin (ng/ml)	5.00 (4.01–5.98)	5.11 (4.34–5.95)	5.01 (4.1–6.00)	7.2 (5.6–8.99)	7.1 (5.8–8.50)	6.95 (4.9–8.96)
Total Testosterone (ng/ml)	4.9 (3.8–5.9)	4.8 (4.4–5.36)	4.8 (3.8–5.8)	5.1 (3.4–6.9)	4.1 (3.9–4.4)	4.9 (4.1–5.8)
TSH (mIU/L)	2.7 (2.5–2.9)	2.5 (2.1–2.9)0	3.0 (2.5–3.5)	2.9 (2.1–3.8)	3.1 (2.5–3.8)	2.9 (2.1–3.8)
Premature Ejaculation Assessments						
PEDT	22.5 (20–25.1)*	21.9 (17.8–26)*	21.3 (16.8–25.9)*	7.7 (6.57–9.00)	7.4 (6.8–8.19)	7.6 (6.2–9.00)
Self-estimated IELT (s)	168 (156–180)*	170 (165–175)*	168 (158–178)*	344 (201–488)	342 (224–460)	343 (250–436)
Depression Assessments						
BDI-II	49 (40–58)*	48 (38–58)*	51 (42–60)*	10 (7–13)	11 (9–13)	11 (9–13)
Sexual Assessments						
EF	29.5 (29–30)	29.5 (29–30)	27 (26–28)	27 (26–28)	26.5 (26–27)	26.5 (26–27)
OR	3 (1–5)	3 (1–5)	5 (3–7)	5 (3–7)	6 (3–9)	6 (3–9)
SD	7 (6–8)	8 (7–9)	5 (1–9)	5 (1–9)	6 (4–8)	6 (4–8)
OS	4.5 (3–6)	4.5 (3–6)	6 (4–8)	6 (4–8)	4.5 (3–6)	4.5 (3–6)
IS	3 (1–5)*	3 (1–5)*	6 (4–8)	7 (6–8)	6 (3–9)	6 (3–9)
IIEF-15- Score	47 (40–54)	48 (41–55)	49 (39–60)	50 (40–60)	49 (39–59)	49 (39–59)

PE Premature Ejaculatory dysfunction; DM Diabetes mellitus type II; BMI Body mass index; TSH Thyroid stimulating hormone; PEDT Premature ejaculation diagnostic tool; IELT Intravaginal ejaculatory latency time; BDI-II Beck's Depression Inventory-II; EF Erectile function; OR Orgasmic function; SD Sexual desire; OS Overall satisfaction; IS Intercourse satisfaction; IIEF-15 International index of Erectile Dysfunction-15
Data is presented as median (Interquartile range). Values in (*) $p < 0.05$ are comparison with the entire control

and dissimilarities through Principal Component Analysis (PCA) that identify new variables. The plot retained most of the inherent dissimilarities by reducing the dimensionality of the data set and identifying directions known as principal components, which displayed a projection of initial variables in the factor space, along with the variation in the data set were at highest level. By utilizing limited components, comparatively few numbers presented every sample in lieu of values for many variables. The linear combination of the projection of initial variables in the factor space F1 accounts for 19.27% variation and F2 displayed 10.92% variation (Fig. 3).

While, Cluster Analysis (CA) further evenly aligned all studied parameters into three clusters (Fig. 4). The

dendrogram showed the similarity and dissimilarity with the ordering of the cluster among the parameters.

1. **Cluster I (Green):** (CAG)n, TT, IELT, PEDT, prolactin, Oxytocin, TSH
2. **Cluster II (Red):** Age, EF, IIEF-15, BMI, SD and OS.
3. **Cluster III (Blue):** BDI-II, (GGC)n.

The first cluster is more homogenous and less dissimilar than the second and third cluster which displayed highest variations when looking at class variables. Cluster I have shortest branches displayed a close relationship between BDI-II and (GGC)n repeats. While second and third clusters showed approximately same dissimilarity index.

Table 4 Correlation between tri-nucleotide repeats, clinical variables, and sexual parameters in whole samples

Variables	Hormonal Parameters				Sexual parameters										
	Oxytocin	Prolactin	TSH	TT	Self-estimated IELT	PEDT	BDI	EF	OR	SD	IS	OS	IIIEF-15		
(CAG) _n	$r = -0.342$ $p < 0.0001$	$r = -0.065$ $p = 0.303$	$r = -0.536$ $p = 0.401$	$r = 0.1027$ $p < 0.0001$	$r = -0.168$ $p < 0.0001$	$r = 0.289$ $p < 0.0001$	$r = -0.259$ $p < 0.0001$	$r = -0.431$ $p = 0.89$	$r = -0.441$ $p < 0.92$	$r = -0.253$ $p = 0.35$	$r = -0.029$ $p < 0.0001$	$r = 0.121$ $p = 0.59$	$r = -0.368$ $p = 0.001$		
(GGC) _n	$r = -0.312$ $p = 0.231$	$r = -0.055$ $p = 0.388$	$r = -0.075$ $p = 0.235$	$r = 0.020$ $p = 0.758$	$r = -0.190$ $p < 0.0001$	$r = 0.240$ $p < 0.0001$	$r = -0.231$ $p < 0.0001$	$r = 0.476$ $p < 0.11$	$r = 0.491$ $p = 0.020$	$r = 0.312$ $p = 0.021$	$r = 0.273$ $p = 0.06$	$r = 0.112$ $p = 0.13$	$r = -0.281$ $p = 0.45$		

Pearson correlation analysis was used to analyze the relationship among clinical, hormonal, and genetic variables. Values in bold are different from 0 with a significance level $\alpha = 0.05$
 TSH Thyroid stimulating hormone; TT Total Testosterone, PE Premature Ejaculatory dysfunction; DM Diabetes mellitus type II; PEDT Premature ejaculation diagnostic tool; BDI-II Beck's Depression Inventory-II; IELT Intravaginal ejaculatory latency time; IIIEF-15 International Index of Erectile Dysfunction-15

Table 5 Correlation of mean plasma levels of biochemical indices of PE + DM subjects and ejaculation related parameters

Parameters	Oxytocin	Prolactin	TSH	TT
Self-estimated IELT	$r = -0.019$ $\rho = 0.0001$	$r = 0.121$ $\rho = 0.055$	$r = -0.041$ $\rho = 0.52$	$r = -0.024$ $\rho = 0.0001$
PEDT	$r = 0.022$ $\rho = 0.72$	$r = -0.051$ $\rho = 0.0001$	$r = 0.069$ $\rho = 0.27$	$r = 0.100$ $\rho = 0.11$
BDI	$r = 0.066$ $\rho = 0.29$	$r = 0.015$ $\rho = 0.81$	$r = -0.034$ $\rho = 0.59$	$r = 0.032$ $\rho = 0.61$
EF	$r = -0.396$ $\rho = 0.0001$	$r = -0.002$ $\rho = 0.98$	$r = -0.053$ $\rho = 0.400$	$r = 0.033$ $\rho = 0.604$
OR	$r = 0.187$ $\rho = 0.003$	$r = 0.102$ $\rho = 0.107$	$r = -0.021$ $\rho = 0.73$	$r = -0.109$ $\rho = 0.086$
SD	$r = 0.127$ $\rho = 0.0001$	$r = 0.118$ $\rho = 0.061$	$r = -0.016$ $\rho = 0.800$	$r = 0.025$ $\rho = 0.697$
IS	$r = -0.043$ $\rho = 0.49$	$r = 0.064$ $\rho = 0.31$	$r = -0.084$ $\rho = 0.18$	$r = 0.031$ $\rho = 0.62$
OS	$r = -0.109$ $\rho = 0.085$	$r = 0.029$ $\rho = 0.74$	$r = -0.039$ $\rho = 0.64$	$r = 0.002$ $\rho = 0.97$
IIEF-15	$r = -0.302$ $\rho = 0.0001$	$r = 0.091$ $\rho = 0.152$	$r = -0.018$ $\rho = 0.20$	$r = -0.009$ $\rho = 0.001$

Pearson correlation analysis was used to analyze the relationship among clinical, hormonal, and genetic variables. Values in bold are different from 0 with a significance level $\alpha = 0.05$. PE Premature Ejaculatory dysfunction; DM Diabetes mellitus type II; PEDT Premature ejaculation diagnostic tool; BDI-II Beck's Depression Inventory-II; IELT Intravaginal ejaculatory latency time; IIEF-15 International index of Erectile Dysfunction-15

Discussion

Sexual function is a complex multidimensional biological process regulating the central dogma of libido and stimulation [26]. It also controls the primary mechanism for the generation of penile tumescence, sexual arousal, rigidity, orgasm, and ejaculation. In the present study, patients do not differ significantly from the controls regarding the number of (CAG)n or (GGC)n repeats, but those patients with longer trinucleotide repeats have higher testosterone and lower oxytocin levels than other patients and controls. According to the correlation studies, patients with longer trinucleotide repeats have lower IELT and higher PEDT scores than the other patients (i.e. more severe premature ejaculation) and lower IIEF-15 scores i.e. they are more prone to erectile dysfunction.

While, TSH and PRL levels appear to be lower in patients with premature ejaculation and diabetes mellitus than in controls.

Additionally, it is validated that endocrine milieu influences the process of PE and has its effects on the ability to achieve an erection by regulating the pathway of L-arginine-nitric oxide-guanylyl cyclase-cyclic guanosine monophosphate (cGMP) mediated smooth muscle relaxation [27, 28].

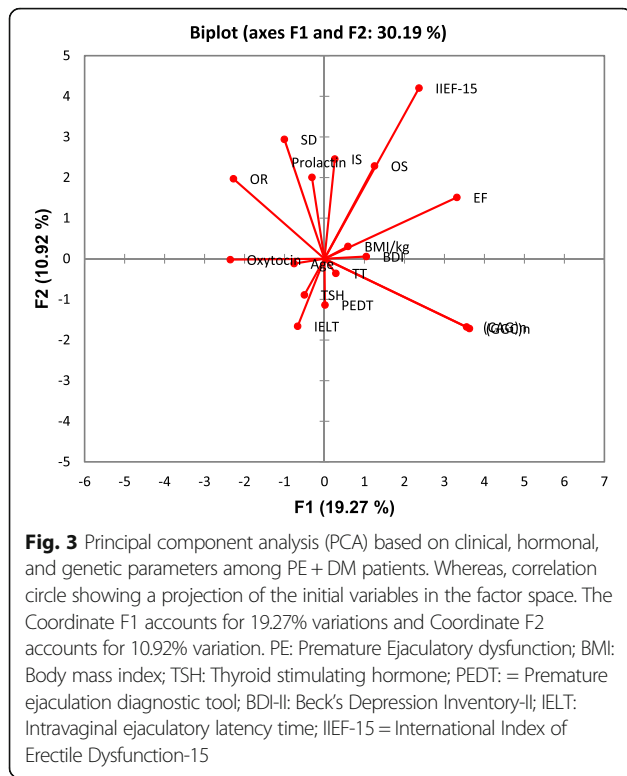
This study tends to confirm that long (CAG)n repeats in the AR compromise several androgen-dependent functions, especially erectile function. Testosterone is one of the key players in the sexual function by

influencing the sexual desire of men through central and peripheral nervous system. The lower levels of serum testosterone (TT) are directly linked to obesity, metabolic syndrome and type 2 diabetes, whereas high levels are in turn associated with PE [29].

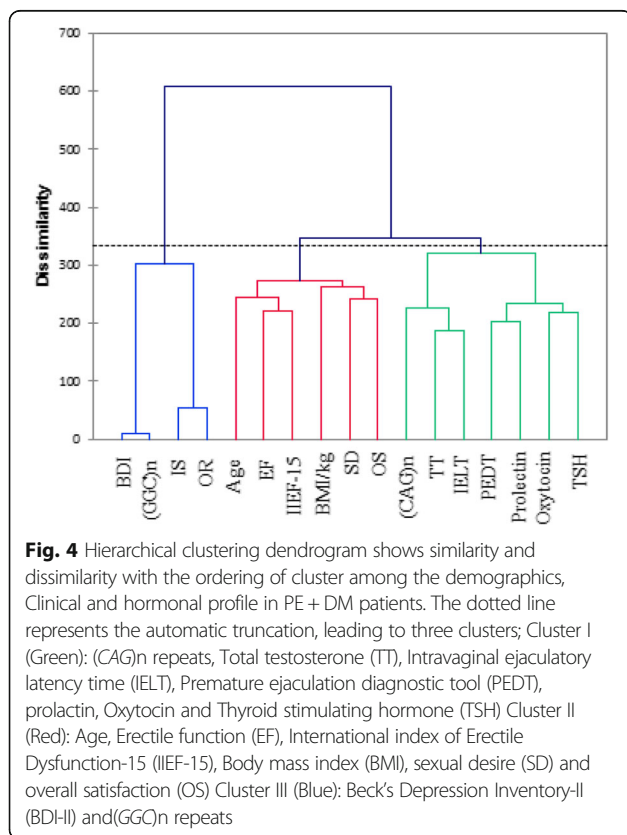
In our study, the patients with long (CAG)n repeats were found to have lower IIEF-15 scores than the controls though they had higher testosterone levels. Moreover, an inverse correlation was observed in the patients' group between (CAG)n repeats length and IIEF-15 score. Thus, in patients with high testosterone levels, long (CAG)n repeats impair the effect of testosterone on erectile function. This confirms the results of the study by Liu CC et al. (who employed the IIEF 5 instead of IIEF-15) who reported that long (CAG)n repeats are an independent risk factor for erectile dysfunction in subjects with testosterone levels above 3.3 ng/mL, but not in those with testosterone levels of 3.3 ng/mL or below [16]. In the PE patients the length of (CAG)n repeats was inversely related to self-estimated IELT and positively related to PEDT, i.e. a greater length was associated with more severe PE. The length of (CAG)n repeats was also positively related to testosterone levels and negatively related to oxytocin levels.

Regarding the PE patients with long (CAG)n repeats, they were found to have higher testosterone levels than the other PE patients and the controls. Testosterone is known to be able to suppress serotonin, a neuromodulator that prevents ejaculations, so that increased testosterone levels could lead to secondary PE. Serotonin is secreted by the brain stem, hypothalamus, and spinal cord and exerts an inhibitory influence on ejaculation. In the patients with long (CAG)n repeats, the high testosterone levels that are found could overtake the lowering effect of (CAG)n repeats length regarding testosterone action on serotonin, and partly explain why the patients with long CAG repeats suffer from PE as well as those patients with normal or short (CAG)n repeats. [30]. Any drug like SSRI, (Selective serotonin reuptake inhibitors) blocks the serotonin reuptake by central neurons successively increased the accumulation of serotonin, which in turn prevents ejaculation and sustained IELT for a bit longer spell [31].

Regarding the PE patients with short (CAG)n repeats, they were found to have higher oxytocin levels than the other subgroups of patients and controls. Such higher oxytocin levels could account for the occurrence of PE in these patients with short (CAG)n repeats. Oxytocin is a neuromodulator and is involved in the modulation of the symptoms of severe depression. Oxytocin levels may increase during sexual intercourse and facilitate the ejaculation by reducing the ejaculatory latency time [32]. The study performed with mice provided the first empirical evidence that high levels of oxytocin can induce a potent effect on ejaculation by decreasing the IELT and post-



copulatory refractory period. Alternatively, rodents with



low serum oxytocin levels had prolonged mount and longer refractory spell [33]. Contrarily, in another study, conducted on a small group of active healthy men, the administration of exogenous oxytocin through nasal spray had no substantial outcome on IELT and orgasm [34].

Thus, this study highlights the fact that androgen receptor polymorphism plays a role in PE and that this role is strongly dependent on hormonal cofactors, especially testosterone and oxytocin: patients with long (CAG)n repeats have higher TT levels that can lead to PE, whereas patients with short (CAG)n repeats may have a higher TT effect (because of short CAG repeats) and higher oxytocin levels, thereby also contributing to occurrence of PE.

The finding of high oxytocin levels in PE + DM patients with short (CAG)n repeats lengths has not yet been reported and remains to be further confirmed in a large cohort study. There is no clear explanation for such a result. However, it is clearly known that testosterone and oxytocin have opposite effects in neuropsychiatric disorders, cognitive and behavioral functions that might be based upon a direct inhibition of AR on oxytocin transcription [35]. A recent study has proposed a clear opposing effect of testosterone and oxytocin in the modulation of psychiatric disorders such as bipolar disorder and major depressive disorder in diabetic patients [36, 37]. Short (CAG)n repeats would have been expected to increase the effects of testosterone and to decrease oxytocin. The inhibiting effect of testosterone on oxytocin seems to be impaired in these patients with short (CAG)n repeats in comparison with controls. It has also been reported that testosterone could exert an indirect role through estradiol, which is a metabolite of testosterone that could stimulate oxytocin release [35]. However, the definite explanation can be given for this finding of high oxytocin levels in patients with short (CAG)n repeats by conducting more robust future studies.

The role of (GGC)n repeats length appears to be a minor one in comparison with that of (CAG)n repeats length. However, there is an inverse significant relationship between the length of (GGC)n repeats and self-estimated IELT and a positive significant relationship with PEDT, which means that longer (GGC)n repeats have an impact on severe PE.

Furthermore, trinucleotide repeats (TNR) polymorphism findings on depression analysis (BDI-II score), demonstrating that all subgroups (PE + DM) had significantly higher state depression than controls, are in line with previous research stated that both PE and ED were associated with severe free-floating anxiety in DM patients [38, 39]. Other published studies suggested that organic and neurobiological factors implicated more than psychological factors in the development of acquired PE [9, 40]. Rastrelli G et al. stated that hypoprolactinemia has

been associated with erectile dysfunction and premature ejaculation, findings further confirmed in the general European population and infertile men. They thought that low PRL might be a mirror of an increased dopaminergic or a decreased serotonergic tone [41]. Corona G et al. showed that PRL (as well as TSH) levels progressively increased from patients with severe PE towards those with an-ejaculation (and that the opposite was observed for testosterone levels). Interestingly, Corona G. et al. included in their discussion the following statements: 'The speculation that low basal PRL could mirror an impaired serotonergic pathway is based also on the observation that... hypoprolactinemia was associated with psychobiological features, often considered associated with a low serotonergic signaling. These include anxiety symptoms and a major propensity towards metabolic syndrome' [42]. This appears to be in accordance with the finding in the present study of low PRL levels in patients with PE and type 2 diabetes. This low serotonergic tone is likely to play a role in PE in such patients. Moreover, Corona et al. [42] give also interesting information regarding TSH and thyroid hormones in PE. Interestingly, the present study also found low TSH levels in PE patients even though we had excluded patients with abnormal TSH levels, unlike Corona's study (in Corona's study, 33 /2652 patients suffered from hyperthyroidism).

This lowering effect on TSH levels might be related to the frequent use of metformin that is widely used the drug as the first line of oral hypoglycemic agent for treatment of type 2 diabetes mellitus [43]. Other studies also proposed that metformin has a notable lowering effect on TSH through modification of thyroid hormone receptor binding affinity and by inhibition of AMPK (adenosine 5' - monophosphate -activated kinase) signaling cascade [44].

The low levels of TSH lead to boost the frequency of contraction in seminal vesicle as well as bulbospongiosus muscles located in the middle of the perineum and are likely responsible for ejaculation with minimal sexual stimulation [45]. Whereas, recovery from low levels of thyrotropin prolonged the emission and expulsion episodes in PE subjects [46, 47]. Consistent with the same scenario another prospective study showed that 50% hyperthyroid cohort had PE and this condition became reversed after therapy, with twofold increased intravaginal ejaculatory latency time [46]. Contrarily, a study on a small group of Dutch patients did not reflect any association between TSH and PE [48].

Typically, a multivariate analysis is the crucial stepping stone towards depicting a scenario between the parameters which are often evident in the classic to the parametric system. For instance, Cluster analysis (CA) that separates all the 16 parameters into three clusters and reveals a heterogeneity among observed parameters,

which are assorted into varied clusters. Furthermore, CA also shows a close link among nearby, associated variables. In this framework, the first cluster assorted (CAG)n, TT, IELT, PEDT, prolactin, Oxytocin, and TSH from the rest of parameters. This is in agreement with contemporary research evidence, has been described by Humble MB et al., that neurohypophyseal hormones are directly involved in the orgasm function, penile erection, and social bonding. They also facilitate the ejaculation which makes them potential candidates as targets for drug therapy in PE subjects [49].

The novel finding of this work is reporting an association between longer (CAG)n homopolymeric tracts and IIEF-15 score. This observation was clearer in CA and PCA analysis which also presented a close liaison between (CAG)n, (GGC)n and IIEF-15 score. High linkage distance between the cluster I and III indicates that hormonal status of oxytocin and prolactin is not dependent on the length of polymorphic (GGC)n repeats of the androgen receptor. This lack of correlation between (GGC)n repeats size and hormonal status in PE subjects have also been described previously by Kalliolia E et al. [50].

PCA analysis projects the biochemical and genetic variables in the first two PCAs space exhibited that concentration of prolactin was positively correlated with orgasm function. Whereas, the second group exposed a close affiliation between self-reported intravaginal ejaculatory latencies, the total serum concentration of testosterone, thyrotropin levels, overall sexual satisfaction, premature ejaculation diagnostic tool (PEDT), and with BML. Interestingly, PCA analysis has also exhibited the correlation between PE parameters (IELT, PEDT, and OS) and hormonal milieu (TT and TSH). The close relationship between TT and IELT suggests that T might have both exogenous and endogenous role on the ejaculatory mechanism through supraspinal control or spinal nucleus of the bulbocavernosus mediated ejaculatory reflex (SNB) [51].

One of the main limitations of our study is that most of the participants filled the questionnaires in front of investigators, which might have triggered uncomfortable feelings, resulting in a negative impact on the precision of the results. Secondly, 250 subjects with PE + DM and 150 healthy men were registered in this study; the small sample size might have influenced the outcomes. Third, we do not record the stopwatch measured IELT values in this study, which might affect the exactitude of results. Fourth, certification of the Chinese version of IIEF-15 has not been done before, though it was employed in this study. Fifth, Type 2 DM patients using metformin might have a lowering effect on the thyrotropin levels.

Conclusion

This study indicates that androgen receptor polymorphism modulates the endocrine effect on ejaculatory reflex

and depends strongly on its 'cofactors'. Moreover, our results also confirmed an association between long trinucleotide repeats of androgen receptor, sex steroids, pituitary, and thyroid hormones in relation to acquired premature ejaculatory dysfunction in diabetic type II patients. However, endocrine regulation of PE reflex is a complex phenomenon that requires further investigation.

Abbreviations

AR: Androgen receptor; BDI-II: Beck Depression Inventory-II; DBD: DNA-binding domain; DM: Diabetes mellitus; EF: Erectile function; FSH: Follicular stimulating hormone; IELT: Self-reported Intra-Vaginal Ejaculatory Latency Time; IIEF-15 score: International Index of Erectile Function-15; IS: Intercourse satisfaction; ISSM: International Society for Sexual Medicine; LBD: Ligand binding domain; NTD: N-terminal transactivation domain; OR: Orogenic function; PE: Premature ejaculation; PEDT: Premature ejaculation diagnostic tool; SD: Sexual desire; TNR: Tri-nucleotide repeat; TT: Testosterone

Acknowledgements

We acknowledge the research initiative of the Lahore Institute of Fertility and Endocrinology (LIFE) and gratefully thank Professor, Dr. Rashid Latif Khan, Professor of Emeritus in Obstetrics, and Gynecology, in logical support and manuscript editing. I would like to convey my sincere appreciation for the expertise of Rameen Nasir and Saba Sardar in producing highly valued graphical pictures.

Authors' contributions

HLK, YLK supervised the work and edited the manuscript, SB; performed all the experimental work and wrote the paper, MA; planned the work, SA; assisted in sample collection and PCR amplification; RMMG, GRG and HHK, contributed in sequencing, hormonal assay, and statistical analysis. All authors read and approved the final manuscript.

Competing interests

The authors declare that they have no competing interests.

Publisher's Note

Springer Nature remains neutral with regard to jurisdictional claims in published maps and institutional affiliations.

Author details

¹Lahore Institute of fertility and Endocrinology, Hameed Latif Hospital, 14 – Abu Bakar Block, New Garden Town, Lahore, Pakistan. ²Department of Human Genetics and Molecular biology, University of Health Sciences, Lahore -54600, Pakistan. ³Institute of Molecular Biology and Biotechnology, The University of Lahore, Lahore 54600, Pakistan. ⁴Department of Medical Education, Rashid Latif Medical College, Lahore, Pakistan. ⁵Centro de investigacion Biomedica de Occidente, IMSS, Universidad de Guadalajara, Jalisco Maxico, Guadalajara, Mexico. ⁶Universidad De Guadalajara CIBO, IMSS, Sierra Mojada 800 Independencia, 44340 Guadalajara, Jalisco Maxicom, Mexico. ⁷Department of Medical Biochemistry, Ege University School of Medicine, Bornova, Izmir, Turkey.

Received: 14 July 2017 Accepted: 1 February 2018

Published online: 06 March 2018

References

- McMahon CG, Jannini EA, Serefoglu EC, Hellstrom WJ. The pathophysiology of acquired premature ejaculation. *Transl Androl Urol*. 2016;5(4):434–49.
- Martyn-St James M, Cooper K, Ren S, Kaltenthaler E, Dickinson K, Cantrell A, Wylie K, et al. Phosphodiesterase type 5 inhibitors for premature ejaculation: a systematic review and meta-analysis. *Eur Urol Focus*. 2017;3(1):119–29.
- Mousa W, Kliesch S, Sandhowe R, Zitzmann M. HP-03-006 association between premature ejaculation (PE) and serum sex steroid concentrations. *J Sex Med*. 2017;14(4):e148–e49.
- Minhas S, Mulhall J. *Male Sexual Dysfunction: A Clinical Guide Custom Reprint*. John Wiley & Sons. 2017;54(11):1031–7.
- Parnham A, Serefoglu EC. Classification and definition of premature ejaculation. *Transl Androl Urol*. 2016;5(4):416–7.
- Shaeer O, Shaeer K, Serefoglu E, Fode M. 381 premature ejaculation among English-speaking male internet users in the USA: results from the global online sexuality survey (GOSS) 2015. *J Sex Med*. 2017;14(1):112–3.
- Basile Fasolo C, Mirone V, Gentile V, Parazzini F, Ricci E. Premature ejaculation: prevalence and associated conditions in a sample of 12,558 men attending the andrology prevention week 2001—a study of the Italian Society of Andrology (SIA). *J Sex Med*. 2005;2(3):376–82.
- Laumann EO, Nicolosi A, Glasser DB, Paik A, Gingell C, Moreira E, et al. Sexual problems among women and men aged 40–80 y: prevalence and correlates identified in the global study of sexual attitudes and behaviors. *Int J Impot Res*. 2005;17(1):39–57.
- Althof SE, McMahon CG, Waldinger MD, Serefoglu EC, Shindel AW, Adair PG, et al. An update of the International Society of Sexual Medicine's guidelines for the diagnosis and treatment of premature ejaculation (PE). *J Sex Med*. 2014;11(6):1392–422.
- Matsumoto T, Sakari M, Okada M, Yokoyama A, Takahashi S, Kouzmenko A, et al. The androgen receptor in health and disease. *Annu Rev Physiol*. 2013; 75:201–24.
- Lu J, Van der Steen T, Tindall DJ. Are androgen receptor variants a substitute for the full-length receptor? *Nat Rev Urol*. 2015;12(3):137–44.
- Tan ME, Li J, Xu HE, Melcher K, E-I Y. Androgen receptor: structure, role in prostate cancer and drug discovery. *Acta Pharmacol Sin*. 2015;36(1):3–23.
- Mostaghel EA, Plymate SR, Montgomery B. Molecular pathways: targeting resistance in the androgen receptor for therapeutic benefit. *Clin Cancer Res*. 2014;20(4):791–8.
- Yuan X, Cai C, Chen S, Yu Z, Balk S. Androgen receptor functions in castration-resistant prostate cancer and mechanisms of resistance to new agents targeting the androgen axis. *J Oncol*. 2014;33(22):2815–25.
- Waldinger MD. Ejaculatio praecox, erectio praecox, and detumescentia praecox as symptoms of a hypertonic state in lifelong premature ejaculation: a new hypothesis. *Pharmacol Biochem Behav*. 2014;121:189–94.
- Liu CC, Lee YC, Tsai V, Cheng KH, Wu WJ, Bao BY, et al. The interaction of serum testosterone levels and androgen receptor CAG repeat polymorphism on the risk of erectile dysfunction in aging Taiwanese men. *Andrology*. 2015;3(5):902–8.
- Fatima SS, Rehman R, Butt Z, Asif Tauni M, Fatima Munim T, et al. Screening of subclinical hypothyroidism during gestational diabetes in Pakistani population. *J Matern-Fetal & Neonatal Med*. 2016;29(13):2166–70.
- Carson DS, Guastella AJ, Taylor ER, McGregor IS. A brief history of oxytocin and its role in modulating psychostimulant effects. *Aust J Psychol*. 2013; 27(3):231–47.
- Lunenfeld B, Mskhalaya G, Zitzmann M, Arver S, Kalinchenko S, Tishova Y, et al. Recommendations on the diagnosis, treatment and monitoring of hypogonadism in men. *Aging Male*. 2015;18(1):5–15.
- Fang Y, Xu M, Chen X, Sun G, Guo J, Wu W, et al. Modified pretreatment method for total microbial DNA extraction from contaminated river sediment. *Front Environ Sci & Eng*. 2015;9(3):444–52.
- Ferlin A, Garolla A, Bettella A, Bartoloni L, Vianzi C, Roverato A, et al. Androgen receptor gene CAG and GGC repeat lengths in cryptorchidism. *Eur J Endocrinol*. 2005;152(3):419–25.
- Wang J, Thornton JC, Russell M, Burastero S, Heymsfield S, Pierson R. Asians have lower body mass index (BMI) but higher percent body fat than do whites: comparisons of anthropometric measurements. *Am J Clin Nutr*. 1994;60(1):23–8.
- JIANN BP. Using the international index of erectile Function-5 to assess erectile function in epidemiological studies. *J Sex Med*. 2012;9(1):327–8.
- Symonds T, Perelman MA, Althof S, Giuliano F, Martin M, May K, et al. Development and validation of a premature ejaculation diagnostic tool. *Eur Urol*. 2007;52(2):565–73.
- Arnau RC, Meagher MW, Norris MP, Bramson R. Psychometric evaluation of the Beck depression inventory-II with primary care medical patients. *Health Psychol*. 2001;20(2):112–3.
- Clavijo R, Ramasamy R. Testosterone replacement should be given to men with erectile dysfunction. *J Urol*. 2017;197(2):284–5.
- Bianco F. The role of man in relation to the sexual desire of the woman. *J Sex Med*. 2017;14(5):e223–4.
- Wu Q, Yang F, Fang Z, Zhao J, Xiaoyan H, Li L. The clinical efficacy and safety of sildenafil in premature ejaculate: a meta-analysis. *Int J Clin Exp Med*. 2017;10(1):394–401.
- Gettler LT, Ryan CP, Eisenberg DT, Rzhetskaya M, Hayes MG, Feranil AB, et al. The role of testosterone in coordinating male life history strategies: the

- moderating effects of the androgen receptor CAG repeat polymorphism. *Horm Behav.* 2017;87:164–75.
30. McMahon CG. Current and emerging treatments for premature ejaculation. *Sex Med Rev.* 2015;3(3):183–202.
 31. Moutkine I, Quentin E, Guiard BP, Maroteaux L, Doly S. Heterodimers of serotonin receptor subtypes 2 are driven by 5-HT_{2C} promoters. *J Biol Chem.* 2017;292(15):6352–68.
 32. Leng G, Ludwig M. Intranasal oxytocin: myths and delusions. *Biol Psychiatry.* 2016;79(3):243–50.
 33. Hughes AM, Everitt BJ, Lightman SL, Todd K. Oxytocin in the central nervous system and sexual behaviour in male rats. *Brain Res.* 1987;414(1):133–7.
 34. Burri A, Heinrichs M, Schedlowski M, Kruger TH. The acute effects of intranasal oxytocin administration on endocrine and sexual function in males. *Psychoneuroendocrinology.* 2008;33(5):591–600.
 35. Crespi BJ. Oxytocin, testosterone, and human social cognition. *Biol Rev Camb Philos Soc.* 2016;91(2):390–408.
 36. Cochran D, Fallon D, Hill M, Frazier JA. The role of oxytocin in psychiatric disorders: a review of biological and therapeutic research findings. *Harv Res Psychiatry.* 2013;21(5):219–20.
 37. Dai D, Li Q-C, Zhu Q-B, Hu S-H, Balesar R, Swaab D, et al. Direct involvement of androgen receptor in oxytocin gene expression: possible relevance for mood disorders. *Neuropsychopharmacology.* 2017;34(3):469–77.
 38. Corona G, Mannucci E, Petrone L, Ricca V, Balercia G, Giommi R, et al. Psycho-biological correlates of free-floating anxiety symptoms in male patients with sexual dysfunctions. *J Androl.* 2006;27(1):86–93.
 39. Mourikis I, Antoniou M, Matsouka E, Voursora E, Tzavara C, Ekizoglou C, et al. Anxiety and depression among Greek men with primary erectile dysfunction and premature ejaculation. *Ann General Psychiatry.* 2015;14(1):34–5.
 40. Giuliano F. Premature ejaculation: definition and drug treatment. *Drugs.* 2007;67(11):1629–31.
 41. Rastrelli G, Corona G, Maggi M. The role of prolactin in andrology: what is new? *Rev J Endocr Metab Disord.* 2015;16(3):233–48.
 42. Corona G, Jannini E, Lotti F, Boddì V, De Vita G, Forti G, et al. Premature and delayed ejaculation: two ends of a single continuum influenced by hormonal milieu. *Int J Androl.* 2011;34(1):41–8.
 43. Fournier J-P, Yin H, Yu OHY, Azoulay L. Metformin and low levels of thyroid-stimulating hormone in patients with type 2 diabetes mellitus. *CMAJ.* 2014;186(15):1138–45.
 44. Chau-Van C, Gamba M, Salvi R, Gaillard RC, Pralong FP. Metformin inhibits adenosine 5'-monophosphate-activated kinase activation and prevents increases in neuropeptide Y expression in cultured hypothalamic neurons. *Endocrinology.* 2007;148(2):507–11.
 45. Carosa E, Di Sante S, Rossi S, Castri A, D'adamo F, Gravina GL, et al. Ontogenetic profile of the expression of thyroid hormone receptors in rat and human corpora cavernosa of the penis. *J Sex Med.* 2010;7(4pt1):1381–90.
 46. Maggi M, Buvat J, Corona G, Guay A, Torres LO. Hormonal causes of male sexual dysfunctions and their management (hyperprolactinemia, thyroid disorders, GH disorders, and DHEA). *J Sex Med.* 2013;10(3):661–77.
 47. Corona G, Rastrelli G, Ferri S, Sforza A, Maggi M: In : Hohl A. (Editor) : Testosterone. From basic to clinical aspects. 2017, Springer, Cham, pp 271–84.
 48. van de Ven AC, Muntjewerff JW, Netea-Maier RT, de Vegt F, Ross H, Sweep F, Kiemeny L, Vos P, et al. Association between thyroid function, thyroid autoimmunity, and state and trait factors of depression. *Acta Psychiatr Scand.* 2012;126(5):377–84.
 49. Humble MB, Bejerot S. Orgasm, serotonin reuptake inhibition, and plasma oxytocin in obsessive-compulsive disorder. Gleaning from a distant randomized clinical trial. *J Sex Med.* 2016;4(3):e145–e55.
 50. Kalliolia E, Silajdžić E, Nambron R, Costelloe SJ, Martin NG, Hill NR, et al. A 24-hour study of the Hypothalamo-pituitary axes in Huntington's disease. *PLoS One.* 2015;10(10):e0138848.
 51. Paduch DA, Polzer PK, Ni X, Basaria S. Testosterone replacement in androgen-deficient men with ejaculatory dysfunction: a randomized controlled trial. *J Clin Endocrinol Metab.* 2015;100(8):2956–62.

Submit your next manuscript to BioMed Central and we will help you at every step:

- We accept pre-submission inquiries
- Our selector tool helps you to find the most relevant journal
- We provide round the clock customer support
- Convenient online submission
- Thorough peer review
- Inclusion in PubMed and all major indexing services
- Maximum visibility for your research

Submit your manuscript at
www.biomedcentral.com/submit

