

ORIGINAL ARTICLE

Open Access



# Kinematic Sensitivity Analysis and Dimensional Synthesis of a Redundantly Actuated Parallel Robot for Friction Stir Welding

Xinxue Chai, Ningbin Zhang, Leiying He, Qinchuan Li and Wei Ye\*

## Abstract

Friction stir welding (FSW) has been widely applied in many fields as an alternative to traditional fusion welding. Although serial robots can provide the orientation capability required to weld along curved surfaces, they cannot adequately support the huge axial downward forces that FSW generates. Available parallel mechanism architectures, particularly redundantly actuated architectures for FSW, are still very limited. In this paper, a redundantly actuated 2UPR-2RPU parallel robot for FSW is proposed, where U denotes a universal joint, R denotes a revolute joint and P denotes a prismatic pair. First, its semi-symmetric structure is described. Next, inverse kinematics analysis involving an analytical representation of rotational axes is implemented. Velocity analysis is also conducted, which leads to the formation of a Jacobian matrix. Sensitivity performance is evaluated utilizing level set and convex optimization methods, where the local sensitivity indices are unit consistent, coordinate free, and of definite physical significance. Furthermore, global and hierarchical sensitivity indices are proposed for the design process. Finally, dimension synthesis is conducted based on the sensitivity indices and the optimal link parameters of the parallel robot are obtained. In summary, this paper proposes a dimensional synthesis method for a redundantly actuated parallel robot for FSW based on sensitivity indices.

**Keywords:** Parallel robot, Actuation redundancy, Sensitivity, Optimization, Friction stir welding

## 1 Introduction

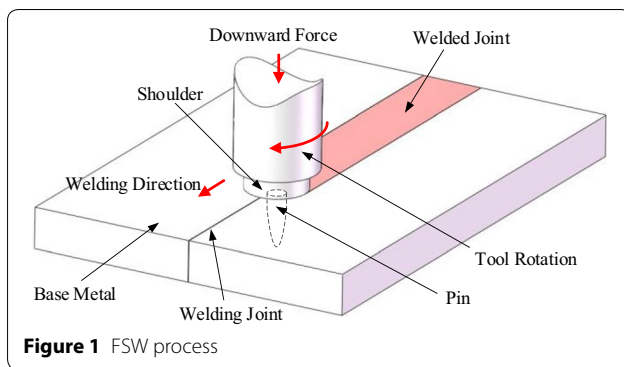
Friction stir welding (FSW) is a novel solid-state welding technology that was patented by The Welding Institute in 1991 [1]. Its advantages over conventional fusion welding processes include the elimination of porosity, low distortion, and no requirement for a filler wire or gas shielding. Consequently, FSW is widely used in the aerospace, shipbuilding, railway, and automotive industries [2]. During the welding process, a rotating tool is inserted into the workpieces to be joined. Frictional heat generates a softened and plasticized zone near the tool. A consolidated joint is then formed by moving the tool along the joint line [3], as shown in Figure 1. Huge axial downward force

is necessary to maintain a steady joining process [4]. Maintaining this force requires a very rigid FSW machine structure, especially when joining thick plates.

FSW along a complex three-dimensional surface requires both orientation capability and high rigidity. These requirements cannot be fulfilled utilizing traditional FSW equipment, which has a limited range of movement, or by six-degree-of-freedom (DOF) serial industrial robots, which are not sufficiently rigid. A parallel robot (or parallel mechanism) consists of a moving platform, fixed platform, and several limb chains connecting the moving platform to the fixed platform. Based on its structural characteristics, a parallel robot can provide higher rigidity and precision, and lower inertia compared to a serial robot. Therefore, parallel mechanisms are a promising choice for FSW machines.

\*Correspondence: wye@zstu.edu.cn

Faculty of Mechanical Engineering and Automation, Zhejiang Sci-Tech University, Hangzhou 310018, China



Parallel robots have been utilized for FSW previously. A Tricept-based hybrid robot for FSW was proposed in Ref. [5]. A five-axis hybrid parallel kinematic machine called VERNE was also utilized for FSW and a control method utilizing force feedback was introduced in Ref. [6]. The optimal design of an FSW robot based on a 3-PRS parallel mechanism was investigated in Ref. [7], where P denotes a prismatic pair, R denotes a revolute pair, and S denotes a spherical joint. The authors proposed a new hybrid robot for FSW consisting of a 3-DOF 2-SPR-RPS parallel mechanism with a 2-DOF PP serial mechanism [8]. However, the low stiffness and limited rotational capability of spherical joints cannot be neglected for FSW. Overall, the available parallel mechanism architectures for FSW are still very limited and a redundantly actuated parallel robot for FSW has not yet been reported.

Singularity and stiffness are two critical issues for FSW parallel robots. Singularity is an inherent property of parallel mechanisms. In a singular configuration, a parallel mechanism loses its rigidity and becomes uncontrollable. One method to eliminate singularity and increase stiffness is to introduce actuation redundancy. There are two main methods for implementing actuation redundancy in a parallel robot. The first is to actuate passive joints. The second is to include an additional actuated limb without changing the DOF of the mobile platform. Many researchers prefer the second approach.

Significant progress has been made regarding the design of parallel robots with actuation redundancy. Fang et al. proposed redundantly actuated parallel mechanisms for ankle rehabilitation and discussed their kinematics and design [9, 10]. Qu et al. designed a class of 3-DOF wrist mechanisms with redundantly actuated closed-loop units [11]. Wu et al. made significant progress in terms of the force and kinematic optimization of redundantly actuated robots [12–15]. Xie et al. [16] discussed the optimization of a redundantly actuated parallel kinematic mechanism with motion/force transmissibility. Kim et al. made relevant contributions to the optimal design of redundantly actuated parallel robots [17–20]. They designed the first

6-DOF redundantly actuated parallel robots for five-face machining and investigated the antagonistic stiffness and energy-saving optimization of redundantly actuated parallel mechanisms systematically. Saffi et al. [21] proposed a redundantly actuated 3-RRR spherical parallel manipulator for a haptic device, which improved dexterity and eliminated singularity. Wang et al. [22] presented the design of an actuation device that could automatically distribute external loads based on stability theorems. Choi et al. [23] proposed an optimization method for torque distribution of redundantly actuated planar parallel mechanisms based on a null-space solution. Cheng et al. [24] proposed a simple scheme for computing the inverse dynamics of a redundantly actuated parallel manipulator and four basic control algorithms. Müller investigated the influence of geometric imperfections on the control of redundantly actuated parallel manipulators [25, 26]. He also presented a relevant interpretation of the geometric aspects of redundant parallel manipulators [27]. Wen and Xu [28] developed a redundantly actuated parallel mechanism with an actuation system for jaw movement. The performance of a five-axis hybrid mechanism was improved by an evolutionary algorithm proposed by Gao and Zhang [29].

In the implementation of dimension synthesis for a known-structure manipulator, kinematic performance evaluation is conducted at two levels, namely, local indices and global indices, which are classified based on whether or not they are configuration dependent. One important type of local indices is based on the Jacobian matrix. This type varies from configuration to configuration. In earlier studies, kinematic indices have been directly derived from Jacobian-based assessments, such as determinants [30], singular values [31], and condition numbers [32]. However, these indices, which can fail to provide an invariant benchmark for Lie group  $SE(3)$ , which is a special Euclidean group involving rotation and translation, tend to suffer from unites inconsistency and metric unboundedness [33]. Therefore, some indices for handling the dimensional non-homogeneity of Jacobian matrices within non-commensurable systems [34] have been proposed in recent years. Based on the concept of isotropy, Angeles [35] proposed an approach to normalize the Jacobian matrix based on an engineered “characteristic length” (CL). Unfortunately, the proper selection of a CL is task dependent. Therefore, this method is not widely accepted [36, 37]. Furthermore, because the CL is unique for each parallel robot, comparisons between different parallel robots during the design process (even parallel robots with the same architecture, but different dimensions) are not sound. Since the proposition of the CL, more researchers have focused on the physical interpretation of dimensionally homogeneous indices, such as power manipulability [36] and the mobility tetrahedron method [38].

In high-precision applications, predicting the boundaries of position and orientation errors for given configurations and actuator errors is crucial. Maximum position and orientation errors are typically regarded as the best assessment metrics for interval sensitivity analysis [33, 39, 40]. As shown by Li et al. [41], the sensitivity and accuracy analysis of a parallel robot can be regarded as a convex optimization process. In Ref. [42], a convex optimization problem was derived from a six-dimensional one level set problem. In this problem, rotation was separated from translation to generate kinematic sensitivity indices with consistent units and clear physical interpretations. Additionally, Wang et al. [43] proposed an approach to predict the exact output error bounds of parallel manipulators based on the level set method.

To overcome the drawbacks of the 2-SPR-RPS parallel robot for FSW, a redundantly actuated 2UPR-2RPU parallel robot is proposed in this paper. Actuation redundancy is implemented by adding an actuated RPU limb to a 3-DOF 2-UPR-RPU parallel robot [44–46] to eliminate singularity and enhance stiffness. In this paper, the kinematic characteristics of the proposed parallel robot are investigated, followed by sensitivity analysis and dimension optimization, where the sensitivity indices utilized are dimensionally homogeneous, coordinate free, and of clear physical significance.

The remainder of this paper is organized as follows. Section 2 presents the model of the 2UPR-2RPU parallel robot and corresponding system settings. Section 3 discusses the kinematics, including inverse position analysis, mobility identification and velocity derivation. In Section 4, both local and global indices representing rotation and translation sensitivities are implemented based on the level set method and convex optimization. Section 5 presents dimension optimization based on the proposed indices. Our conclusions are summarized in Section 6.

## 2 System Description

A CAD model of the 2UPR-2RPU parallel robot is presented in Figure 2. The manipulator consists of a base platform, mobile platform, and four limbs arranged symmetrically. Counting from the base to the mobile platform, limb 1 and limb 2 are identical UPR limbs. The first revolute axes of the two U joints are coincident. The second revolute axis of the U joint is parallel to the revolute axis near the mobile platform and perpendicular to the prismatic pair. Limb 3 and limb 4 are identical RPU limbs that are inverted forms of limb 1 and limb 2. Counting from the base, the first revolute axes in limb 3 and limb 4 are parallel. The revolute axis near the mobile platform in the U joint in limb 3 is coincident with the revolute axis near the mobile platform in the U joint in limb 4. All four prismatic pairs are actuated. The centers of the U joints in limb 1 and limb 2 are denoted

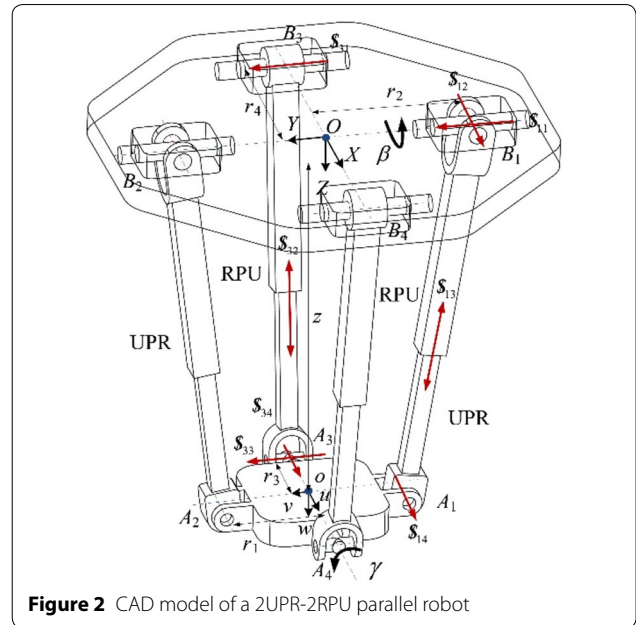


Figure 2 CAD model of a 2UPR-2RPU parallel robot

as  $B_1$  and  $B_2$ , respectively, while the centers of the R joints in limb 3 and limb 4 are denoted as  $B_3$  and  $B_4$ , respectively. The centers of the R joints in limb 1 and limb 2 are denoted as  $A_1$  and  $A_2$ , respectively, while the centers of the U joints in limb 3 and limb 4 are denoted as  $A_3$  and  $A_4$ , respectively.

A fixed coordinate frame  $O-XYZ$ , denoted as  $\{O\}$ , is attached to the base. The origin  $O$  lies on the center point of  $B_1B_2$ . The  $X$  and  $Y$  axes are coincident with  $OB_4$  and  $OB_2$ , respectively, and the  $Z$  axis points downward. A moving coordinate frame  $o-uvw$ , denoted as  $\{o\}$ , is established on the mobile platform, where the  $u$  axis runs along  $oA_4$ ,  $v$  axis runs along  $oA_2$ , and  $w$  axis obtained from the right-hand rule. The coordinate frame  $B_i-x_iy_iz_i$  ( $i=1-4$ ), denoted as  $\{R_i\}$ , is attached to limb  $i$ . For  $\{R_i\}$  ( $i=1, 2$ ), the  $x_i$  and  $y_i$  axes point along the corresponding axes of the U joint on  $B_i$ . For  $\{R_i\}$  ( $i=3, 4$ ), all of the axes point in the same directions as the corresponding axes of  $\{O\}$ . The joint points  $\{A_1, A_2, A_3, A_4\}$  and  $\{B_1, B_2, B_3, B_4\}$  form two rhombuses with  $oA_1 = oA_2 = r_1$ ,  $oB_1 = oB_2 = r_2$ ,  $oA_3 = oA_4 = r_3$ ,  $oB_3 = oB_4 = r_4$ , and  $r_2r_3 = r_1r_4$ . The robot for FSW consists of a 2UPR-2RPU parallel mechanism and two gantries, as shown in Figure 3.

## 3 Kinematics

### 3.1 Inverse Position Analysis

For the 2UPR-2RPU parallel robot, the rotation transformation matrix of frame  $\{o\}$  with respect to frame  $\{O\}$  is derived as

$$R = \text{Rot}(y, \beta)\text{Rot}(u, \gamma) = \begin{bmatrix} c_\beta & s_\beta s_\gamma & s_\beta c_\gamma \\ 0 & c_\gamma & -s_\gamma \\ -s_\beta & c_\beta s_\gamma & c_\beta c_\gamma \end{bmatrix}, \quad (1)$$

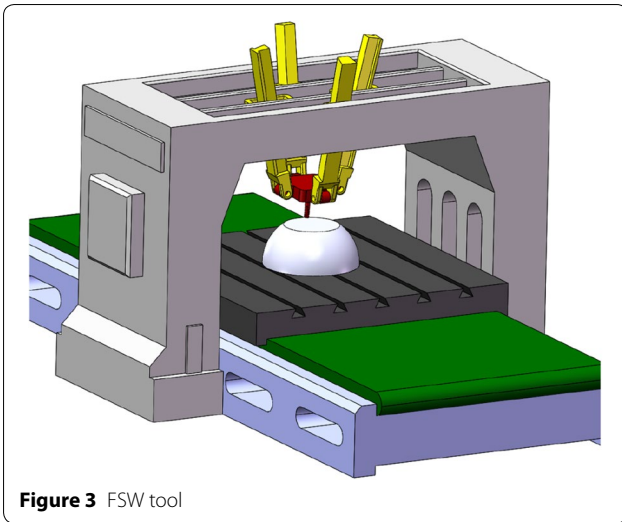


Figure 3 FSW tool

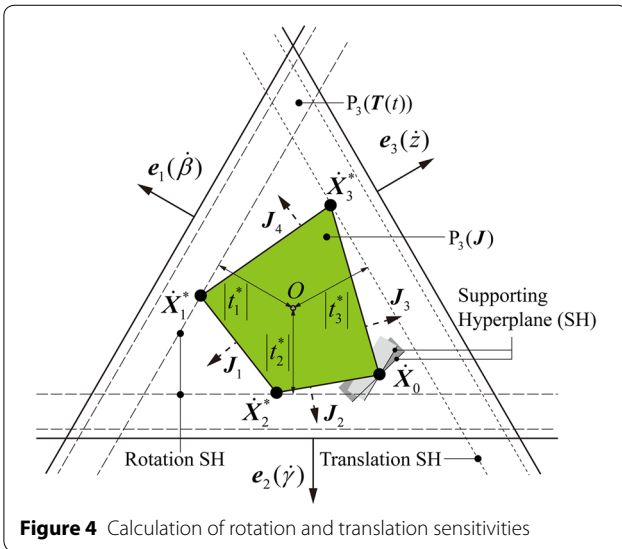


Figure 4 Calculation of rotation and translation sensitivities

where  $\beta$  and  $\gamma$  are the rotation angles of the moving platform around the  $Y$  axis and  $u$  axis, respectively. The letters “c” and “s” represent cosine and sine, respectively. As shown in Figure 4, the position vector of the center point  $o$  of the moving platform with respect to frame  $\{O\}$  is denoted as  $P$ .

$$P = [zt\beta \ 0 \ z]^T, \tag{2}$$

where “t” represents tangent. The position vectors of joint points  $A_i$  with respect to  $\{o\}$  and  $B_i$  with respect to  $\{O\}$  are written as

$$\begin{cases} {}^oA_1 = [0 \ -r_1 \ 0]^T, & B_1 = [0 \ -r_2 \ 0]^T, \\ {}^oA_2 = [0 \ r_1 \ 0]^T, & B_2 = [0 \ r_2 \ 0]^T, \\ {}^oA_3 = [-r_3 \ 0 \ 0]^T, & B_3 = [-r_4 \ 0 \ 0]^T, \\ {}^oA_4 = [r_3 \ 0 \ 0]^T, & B_4 = [r_4 \ 0 \ 0]^T, \end{cases} \tag{3}$$

where the leading superscript “ $o$ ” indicates a vector expressed in frame  $\{o\}$ , and that in frame  $\{O\}$  is omitted for simplicity. Therefore, the points  $A_i$  with respect to  $\{O\}$  are derived as

$$A_i = R^o A_i + P. \tag{4}$$

By combining Eqs. (2), (3), and (4), the inverse position kinematics for the 2UPR-2RPU parallel robot can be obtained as follows:

$$q_i = |A_i - B_i| = |[\lambda_i \ \mu_i]|, \quad i = 1, 2, 3, 4, \tag{5}$$

where

$$\begin{cases} \lambda_1 = z\sec\beta - r_1s_\gamma, & \mu_1 = r_2 - r_1c_\gamma, \\ \lambda_2 = z\sec\beta + r_1s_\gamma, & \mu_2 = r_1c_\gamma - r_2, \\ \lambda_3 = r_4 - r_3c_\beta + zt\beta, & \mu_3 = z + r_3s_\beta, \\ \lambda_4 = r_3c_\beta + zt\beta - r_4, & \mu_4 = z - r_3s_\beta. \end{cases}$$

### 3.2 Mobility of the Moving Platform

The mobility of the moving platform depends on its configuration. Based on the screw theory [47], we not only calculate the DOFs of the 2UPR-2RPU parallel robot, but also identify the motion axes under each configuration. In the screw theory, a unit screw  $\mathcal{S}$  is defined as

$$\mathcal{S} = (s; s_0) = (s; r \times s + hs), \tag{6}$$

where  $s$  is a unit vector representing the direction of the screw axis,  $r$  is the position vector of any point on the screw axis, and  $h$  is the pitch.

A screw  $\mathcal{S}^r = (s_r; s_{0r})$  and screw system,  $\{\mathcal{S}_1, \mathcal{S}_2, \dots, \mathcal{S}_n\}$  are said to be reciprocal if they satisfy the following condition:

$$\mathcal{S}_i \circ \mathcal{S}^r = s_i \cdot s_{0r} + s_r \cdot s_{0i}, \tag{7}$$

where “ $\circ$ ” represents the reciprocal product. The screw of the  $j$ th joint of the  $i$ th limb is denoted as  $\mathcal{S}_{ij}$  and the  $k$ th constraint screw of the  $i$ th limb exerted on the mobile platform is denoted as  $\mathcal{S}_{ik}^r$ . For the  $i$ th limbs ( $i = 1, 2$ ), the motion system is defined as

$$\begin{cases} \mathcal{S}_{i1} = (s_{i1} \hat{B}_i s_{i1})^T, \\ \mathcal{S}_{i2} = (s_{i2} \hat{B}_i s_{i2})^T, \\ \mathcal{S}_{i3} = (\mathbf{0}_{1 \times 3} (A_i - B_i)/q_i)^T, \\ \mathcal{S}_{i4} = (s_{i4} \hat{A}_i s_{i4})^T, \end{cases} \quad i = 1, 2, \tag{8}$$

where “ $\wedge$ ” denotes a skew-symmetric operator (for additional details, see Ref. [48]),  $s_{i1} = [0 \ 1 \ 0]^T$ , and  $s_{i2} = s_{i4} = \text{Rot}(y, \beta)[1 \ 0 \ 0]^T$ . Similarly, for the other  $i$ th limbs ( $i = 3, 4$ ), we have

$$\begin{cases} \$_{i1} = (\mathbf{s}_{i1} \hat{\mathbf{B}}_i \mathbf{s}_{i1})^T, \\ \$_{i2} = (\mathbf{0}_{1 \times 3} (\mathbf{A}_i - \mathbf{B}_i) / q_i)^T, \\ \$_{i3} = (\mathbf{s}_{i3} \hat{\mathbf{A}}_i \mathbf{s}_{i3})^T, \\ \$_{i4} = (\mathbf{s}_{i4} \hat{\mathbf{A}}_i \mathbf{s}_{i4})^T, \end{cases} \quad i = 3, 4, \quad (9)$$

where  $\mathbf{s}_{i1} = \mathbf{s}_{i3} = [0 \ 1 \ 0]^T$  and  $\mathbf{s}_{i4} = \text{Rot}(y, \beta)[1 \ 0 \ 0]^T$ . The two types of screw systems in Eqs. (8) and (9), are presented in Figure 2 with  $i = 1$  and  $i = 3$  for reference. By utilizing Eq. (7), the constraint wrench system of the  $i$ th limb can be obtained as follows:

$$\mathbf{C}_i = [ \$_{i1}^r \ \$_{i2}^r ] = \text{Rec}(\$_{i1}, \$_{i2}, \$_{i3}, \$_{i4}), \quad (i = 1, 2, 3, 4), \quad (10)$$

where “Rec(·)” denotes the reciprocal operator of a screw system \*. Then, all of the constraint wrench systems exerted on the moving platform can be written as

$$\mathbf{C} = [ \mathbf{C}_1 \ \mathbf{C}_2 \ \mathbf{C}_3 \ \mathbf{C}_4 ]. \quad (11)$$

Finally, the mobility of the moving platform is defined as

$$\begin{aligned} \mathbf{M} &= \text{Rec}(\mathbf{C}) = (\mathbf{M}_1 \ \mathbf{M}_2 \ \mathbf{M}_3) \\ &= \begin{pmatrix} 0 & 0 & 0 & t_\beta & 0 & 1 \\ 0 & 1 & 0 & 0 & 0 & 0 \\ -\cot\beta & 0 & 1 & 0 & -z/(s_\beta c_\beta) & 0 \end{pmatrix}^T. \end{aligned} \quad (12)$$

According to Eqs. (10)–(12), although  $\mathbf{C}$  is a  $6 \times 8$  matrix, its column-space rank is three, meaning the moving platform is over-constrained by additional linearly dependent ( $8 - 3 = 5$ ) wrenches. Therefore, the DOF of the moving platform is  $6 - 3 = 3$  with one translational DOF along  $\mathbf{M}_1$ , and two rotational DOFs along  $\mathbf{M}_2$  and  $\mathbf{M}_3$ . It is clear that the translational direction of  $\mathbf{M}_1$  lies along  $(t_\beta \ 0 \ 1)^T$ . The rotational axis of  $\mathbf{M}_2$  passes through the origin point at a direction of  $(0 \ 1 \ 0)^T$ . Finally, the rotational axis of  $\mathbf{M}_3$  points along  $(-\cot\beta \ 0 \ 1)^T$  with a line moment of  $(0 \ -z/(s_\beta c_\beta) \ 0)^T$ .

### 3.3 Velocity Analysis

Taking the first-order derivative of Eq. (5) yields

$$\mathbf{D}\dot{\mathbf{q}} = \mathbf{G}\dot{\mathbf{X}}, \quad (13)$$

where  $\dot{\mathbf{q}} = [\dot{q}_1 \ \dot{q}_2 \ \dot{q}_3 \ \dot{q}_4]^T$ ,  $\dot{\mathbf{X}} = [\dot{\beta} \ \dot{\gamma} \ \dot{z}]^T$ ,  $\mathbf{D} = \text{diag}(q_1, q_2, q_3, q_4)$ ,  $\mathbf{G} = [G_{ij}]_{4 \times 3}$ ,  $G_{11} = \lambda_1 z \sec\beta t_\beta$ ,  $G_{12} = \mu_1 r_1 s_\gamma - \lambda_1 r_1 c_\gamma$ ,  $G_{13} = \lambda_1 \sec\beta$ ,  $G_{21} = \lambda_2 z \sec\beta t_\beta$ ,  $G_{22} = \lambda_2 r_1 c_\gamma - \mu_2 r_1 s_\gamma$ ,  $G_{23} = \lambda_2 \sec\beta$ ,  $G_{31} = \lambda_3 (r_3 s_\beta + z \sec\beta^2) + \mu_3 r_3 c_\beta$ ,  $G_{32} = 0$ ,  $G_{33} = \lambda_3 t_\beta + \mu_3$ ,  $G_{41} = \lambda_4 (z \sec\beta^2 - r_3 s_\beta) - \mu_4 r_3 c_\beta$ ,  $G_{42} = 0$ ,  $G_{43} = \lambda_4 t_\beta + \mu_4$ .

If  $\mathbf{D}$  is not singular (i.e.,  $q_i \neq 0$ ), then multiplying both sides of Eq. (13) by  $\mathbf{D}^{-1}$  yields the well-known velocity Jacobian mapping

$$\begin{aligned} \dot{\mathbf{q}} &= \mathbf{D}^{-1} \mathbf{G} \dot{\mathbf{X}} = \mathbf{J} \dot{\mathbf{X}} \\ &= [J_2^T \ J_2^T \ J_3^T \ J_4^T]^T [\boldsymbol{\omega}^T \ \boldsymbol{\nu}^T]^T, \end{aligned} \quad (14)$$

where  $J_i$  is the  $i$ th row of the Jacobian matrix  $\mathbf{J}$ ,  $\boldsymbol{\omega} = [\dot{\beta} \ \dot{\gamma}]^T$ , and  $\boldsymbol{\nu} = \dot{z}$ .

## 4 Sensitivity Analysis

The sensitivity of a parallel robot is determined by its mechanical structure, actuator errors, joint clearances, etc. During the design process, the parameter settings of the mechanical structure are the main consideration, so other aspects are not considered in this paper. From the perspective of mechanical structure, the sensitivity of a parallel manipulator indicates how small displacements of the actuator affect the motion of the moving platform in a given configuration. It should be noted that the sensitivity described above is local. Local sensitivity is insufficient for describing the overall sensitivity performance of a parallel manipulator in a real-world workspace. Here, we present both local and general sensitivity analysis of the 2UPR-2RPU parallel robot, which is inspired by the work of Cardou et al. [42].

For a given configuration, the sensitivity problem is defined by maximizing the infinite norm of  $\boldsymbol{\omega}$  and  $\boldsymbol{\nu}$  under the velocity Jacobian constraints as follows:

$$\begin{cases} \sigma_{r,\infty} = \max_{\mathbf{X}} \|\boldsymbol{\omega}\|_\infty, \\ \sigma_{t,\infty} = \max_{\mathbf{X}} \|\boldsymbol{\nu}\|_\infty, \end{cases} \quad \text{s.t.}, \quad \|\dot{\mathbf{q}}\|_\infty = \|\mathbf{J}\dot{\mathbf{X}}\|_\infty = 1, \quad (15)$$

where  $\sigma_{r,\infty}$  and  $\sigma_{t,\infty}$  are the indices of rotation sensitivity (RS) and translation sensitivity (TS), respectively. For the 2UPR-2RPU parallel robot, we have  $\boldsymbol{\omega} = [\dot{\beta} \ \dot{\gamma}]^T$  and  $\boldsymbol{\nu} = \dot{z}$ , which implies that the optimization problem can be solved in a three-dimensional polytope (cube) denoted as  $\mathbf{P}_3(\mathbf{J}) = \{\mathbf{X} \in \mathbb{R}^3 \mid \|\mathbf{J}\dot{\mathbf{X}}\|_\infty = 1\}$ , whose center is located at the origin and whose edge length is two. Note that two of the edges indicate rotation variation and the third edge indicates translation variation. The solution to the problem in Eq. (15) is given by the one-level set of the function

$$\mathbf{P}_3(\mathbf{T}(t)) = \{\mathbf{X} \in \mathbb{R}^3 \mid \|\mathbf{T}(t)\dot{\mathbf{X}}\|_\infty = 1\}, \quad (16)$$

where  $\mathbf{T}(t) = t^{-1} \mathbf{I}_{3 \times 3}$ . Therefore, we have

$$\|\mathbf{T}(t)\dot{\mathbf{X}}\|_\infty = |t^{-1}| \|\dot{\mathbf{X}}\|_\infty = \begin{cases} |t^{-1}| \|\boldsymbol{\omega}\|_\infty = 1, & \text{Rot.} \\ |t^{-1}| \|\boldsymbol{\nu}\|_\infty = 1, & \text{Trans.} \end{cases} \quad (17)$$

From Eqs. (15) and (17), we have

$$\begin{cases} Rot : \max_X \|\omega\|_\infty \Leftrightarrow \max_X |t|, \\ Trans : \max_X \|\nu\|_\infty \Leftrightarrow \max_X |t|. \end{cases} \quad (18)$$

As shown in Figure 4, the convex set  $P_3(\mathbf{J})$  is inscribed in  $P_3(\mathbf{T}(t))$ . Regarding the supporting hyperplane theorem [49], for any boundary point (denoted as  $\dot{X}_0$ ) of  $P_3(\mathbf{J})$ , one can always find a supporting hyperplane containing  $\dot{X}_0$ . Therefore, the problem consists of identifying the boundary of  $P_3(\mathbf{J})$  in the directions of the rotational or translational axes, which is equivalent to finding the farthest boundary point  $\dot{X}^* = P_3(\mathbf{T}(t^*))$  from the origin point  $O$ . By moving the hyperplanes with normal vectors  $\mathbf{e}_i$  along the direction of  $-\mathbf{e}_i$ , the point  $\dot{X}_i^*$  can be identified, where the maximum distance is  $|t_i^*|$ . Because the envelop of  $P_3(\mathbf{J})$  is symmetric with respect to the origin point  $O$ , the calculation of hyperplanes can be simplified on the side of  $\mathbf{e}_i^T \dot{X} \geq 0$ . Therefore, the supporting hyperplanes are obtained as

$$t_i^* = \max_X \mathbf{e}_i^T \dot{X}, \quad \text{s.t.}, \quad L\dot{X} - \mathbf{1}_{2n} \leq \mathbf{0}_{2n}, \quad (19)$$

where  $L = [J^T \ -J^T]^T$  and  $n$  is the number of actuators. Furthermore, the RS and TS are defined as

$$\begin{cases} \sigma_{r,\infty} = \max(t_i^*), i = 1, 2, \\ \sigma_{t,\infty} = t_3^*. \end{cases} \quad (20)$$

Figure 5 presents the distribution of rotation and translation sensitivities with  $(r_1, r_2, r_3, r_4, z) = (1, 3, 2, 6, \sqrt{6}) m$ . The small displacements are normalized as  $(\|\omega\|_\infty, \|\nu\|_\infty) = (1 \text{ rad}, 1 \text{ mm})$ , and the thresholds are correspondingly selected as  $(\varepsilon_{r,\infty}, \varepsilon_{t,\infty}) = (10 \text{ rad/m}, 10 \text{ mm/m})$ . The atlases are represented by polar coordinates. We denote the polar

radius as  $\beta \in [0, 90^\circ]$  and polar angle as  $\gamma \in [0^\circ, 360^\circ]$ . The blank regions in both the RS and TS are denoted as high-sensitivity areas (HSAs), where the thresholds  $\varepsilon_{r,\infty}$  and  $\varepsilon_{t,\infty}$  eliminate points with extreme values (greater than  $10^5 \text{ rad/m}$  or  $10^5 \text{ mm/m}$ ). The appearance of HSAs is strongly related to the angle  $\beta$ . In the range of  $\beta = [87^\circ, 90^\circ]$ , for any  $\gamma$ , there are no points inside the threshold for the RS. The same is true for the range of  $\beta = [75^\circ, 90^\circ]$  for the TS. In contrast, the impact of  $\gamma$  on sensitivity remains at a relatively low level. The region near  $\gamma = 90^\circ$  exhibits slight fluctuation, while the other regions are largely stable (fluctuations smaller than 1), which can be observed in the dashed boxes of both RS and TS. In summary, we wish to enlarge the low-sensitivity areas, which are far from the rotation angle boundaries, especially for the angle  $\beta$ . Although Figure 5 is presented as a single example, similar distribution trends can be observed in other scenarios without loss of generality.

During the performance evaluation of a parallel robot, both types of sensitivity must be considered. As shown above, both sensitivities increase dramatically near the boundaries of rotation angles. Such regions should be avoided during operation. To identify low-sensitivity regions (LSRs), we define the following global indices:

$$\eta_r = \frac{A_r}{W}, \quad \eta_t = \frac{A_t}{W} \quad (21)$$

where  $A_r(A_t)$  is the area in which  $\sigma_{r,\infty} \leq \varepsilon_{r,\infty} (\sigma_{t,\infty} \leq \varepsilon_{t,\infty})$ , and the parameter  $\varepsilon_{r,\infty} (\varepsilon_{t,\infty})$  denotes the allowable maximum rotational (translational) output error. The parameter  $W$  is the area of the reachable workspace. The parameters  $\eta_r(\eta_t)$  and  $\eta$  denote the ratios of rotational (translational) LSRs and general LSRs, respectively. The greater the magnitudes of  $\eta_r(\eta_t)$  and  $\eta$

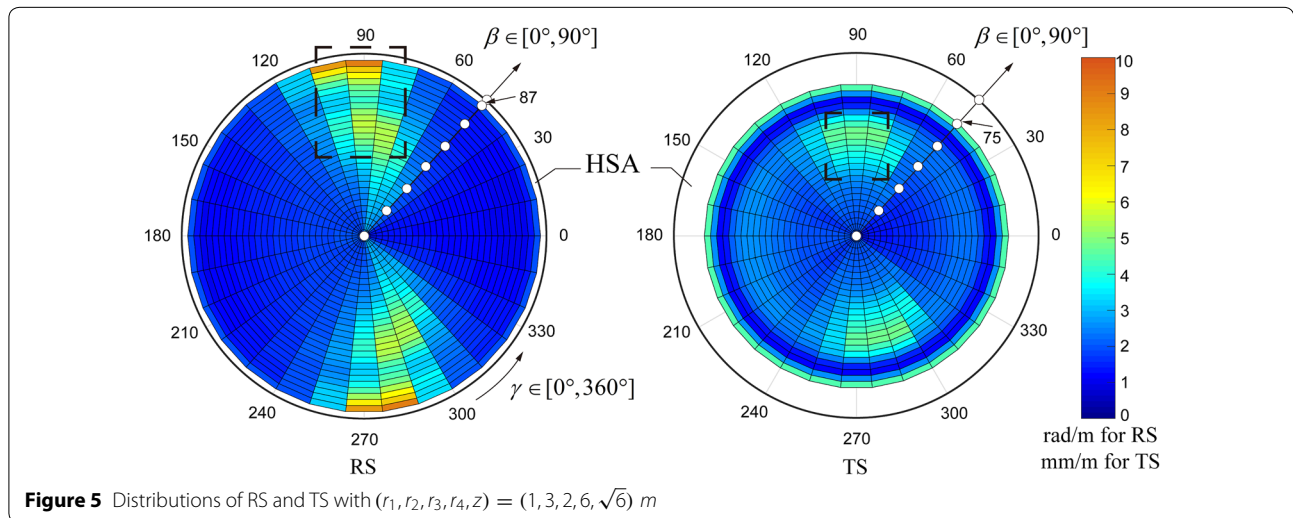


Figure 5 Distributions of RS and TS with  $(r_1, r_2, r_3, r_4, z) = (1, 3, 2, 6, \sqrt{6}) m$

for the workspace of a robot, the better the sensitivity. To evaluate the quality of LSRs, we define

$$\xi_r = A_r^{-1} \int_{A_r} \sigma_{r,\infty} dA_r, \quad \xi_t = A_t^{-1} \int_{A_t} \sigma_{t,\infty} dA_t, \quad (22)$$

where  $\xi_r$  ( $\xi_t$ ) and  $\xi$  denote the mean values of rotational (translational) LSRs and general LSRs, respectively. The smaller the magnitudes of  $\xi_r$  ( $\xi_t$ ) and  $\xi$ , the better the sensitivity. Here, we do not define an index as  $\xi = \min(\xi_r, \xi_t)$  because the units of  $\xi_r$  and  $\xi_t$  are different. Because different indices describe different characteristics of sensitivities, the priority of indices in Eqs. (21) and (22) depends on engineering demands.

### 5 Optimization of Architecture Parameters

The performance of a parallel robot is heavily influenced by link parameters. To improve the accuracy of the 2UPR-2RPU parallel robot in the design stage, the RS and TS indices are adopted for parameter optimization. The objective of optimization is to find optimal or near-optimal parameter sets with which the parallel robot has adequate rotational and translational sensitivities. We utilized the optimal design approach from Ref. [16], where the parameters are initially normalized as

$$\begin{cases} D = (r_1 + r_2 + r_3)/3, \\ l_i = r_i/Di = 1, 2, 3, \\ r_4 = r_2r_3/r_1, \end{cases} \quad (23)$$

where  $D$  is a normalized factor and  $l_i$  is a normalized non-dimensional parameter. When considering practical applications, the normalized lengths  $l_i$  satisfies

$$\begin{cases} l_3, l_4 \leq l_1, l_2, \\ 0 < l_i < 3. \end{cases} \quad (24)$$

If the length of the stroke  $z$  is too short, the parallel robot may suffer from linkage interference at large rotation angles  $\gamma$ . Therefore, we have  $z > \max(r_1, r_3)$ . Additionally, we define  $z \equiv k\max(r_2, r_4)$  as the general working stroke, where  $k$  is a weighting coefficient depending on the application. This is because the stroke  $z$  is not an architecture parameter (such parameters must be designed with fixed values). In a three-dimensional space with coordinate axes of  $l_1, l_2$ , and  $l_3$ , as shown in Figure 6, the parameter design space can be represented by the shaded area, which is determined by the conditions in Eqs. (23) and (24). Furthermore, the three-dimensional design space can be planarized into a two-dimensional design space [50, 51] according to the following equation:

$$\begin{cases} U = l_1, \\ V = (3 - l_3 + l_2)/\sqrt{3}. \end{cases} \quad (25)$$

Figure 7 presents the distribution of  $(\eta_r, \eta_p, \sigma_r, \sigma_p)$  in the parameter design space. The optimal region (OR) for each index is different. To avoid numerical calculation errors, some optimal points or small ORs are discarded and only large ORs are considered. However, different indices describe different characteristics of sensitivities, meaning dimension optimization must be conducted hierarchically in terms of the priority of indices. Therefore, the expected cost first maximization and second minimization are defined as

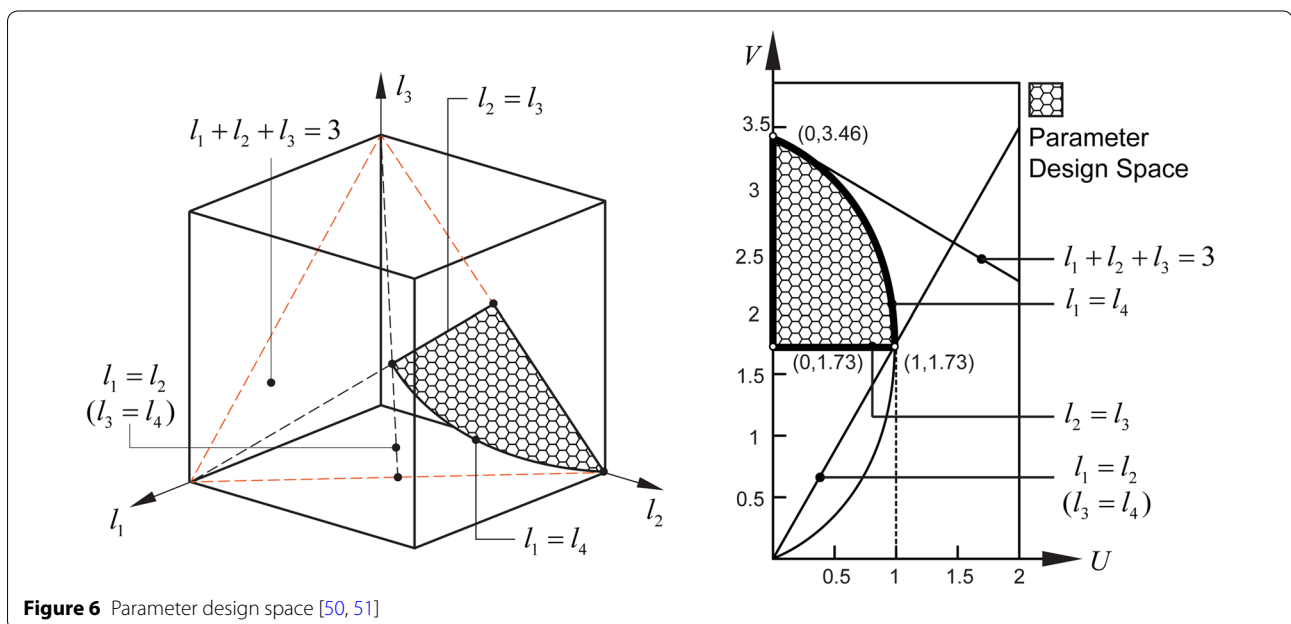


Figure 6 Parameter design space [50, 51]

$$\begin{cases} \max_{U,V} \chi_1 = \frac{1}{2(\theta_{11} + \theta_{12})} \left( \frac{\theta_{11}\eta_r}{\max(\eta_r)} + \frac{\theta_{12}\eta_p}{\max(\eta_p)} \right), & \text{1st optimization,} \\ \min_{U,V} \chi_2 = \frac{1}{2(\theta_{21} + \theta_{22})} \left( \frac{\theta_{21}\sigma_r}{\max(\sigma_r)} + \frac{\theta_{22}\sigma_p}{\max(\sigma_p)} \right), & \text{2nd optimization,} \end{cases} \quad (26)$$

where  $(\theta_{11}, \theta_{12}, \theta_{21}, \theta_{22})$  are weighting factors depending on the characteristic to be highlighted. Eq. (26) indicates that optimization begins with  $\max_{U,V} \chi_1$ , followed by  $\min_{U,V} \chi_2$ , where  $\chi_i$  is normalized to a range of zero to one. In this case, we set  $(\theta_{11}, \theta_{12}, \theta_{21}, \theta_{22}) = (1, 1, 1, 1)$  and the final OR is obtained as shown in Figure 8. First, the region where  $\chi_1 = 1$  is selected. However, this region is nearly coincident with the region where  $\max \chi_2 = 0.85$ . According to the hierarchical order of  $\chi_i$ , we can derive a compromised OR solution set with  $(\chi_1, \chi_2) = (1, 0.85)$ . Robust solutions for the optimized architecture parameters are listed in Table 1, where  $D = 500$  mm and the value of  $r_i$  is rounded. The 2UPR-2RPU parallel robot with optimized dimensions has hierarchical robustness to the disturbances of actuators considering both rotation and translation sensitivities.

### 6 Conclusions

In this paper, we presented the kinematic sensitivity analysis and dimensional synthesis of a 2UPR-2RPU redundantly actuated parallel robot for FSW. Mobility analysis revealed that the parallel robot has one translational and two rotational DOFs, which can meet the demands of FSW applications in which the explicit displacement and orientation axes of DOFs are identified. To improve the accuracy of the proposed parallel robot, sensitivity analysis was conducted based on decoupled rotation and translation indices. The range of HSAs is

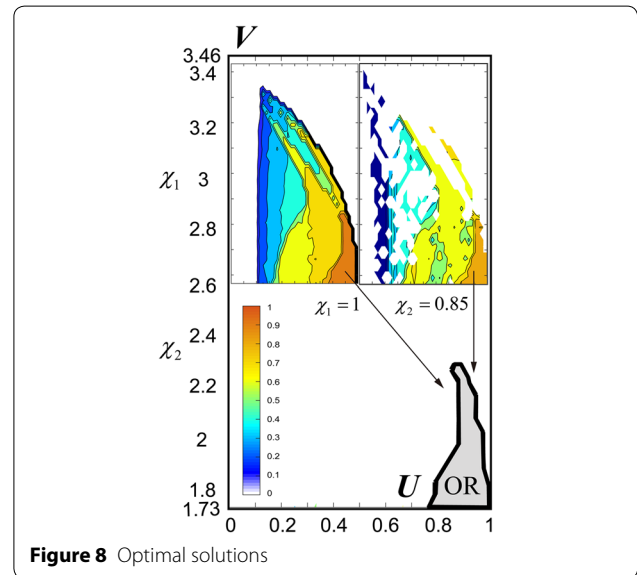


Figure 8 Optimal solutions

strongly related to the angle  $\beta$ , rather than the angle  $\gamma$ . The region near  $\gamma = 90^\circ$  exhibits slight fluctuations, while the other regions are largely stable. Furthermore, global sensitivity indices are utilized hierarchically for dimension synthesis for the proposed parallel robot. The parallel robot with optimal parameter sets has relatively good RS and TS performance (i.e., robust to the disturbance of actuators).

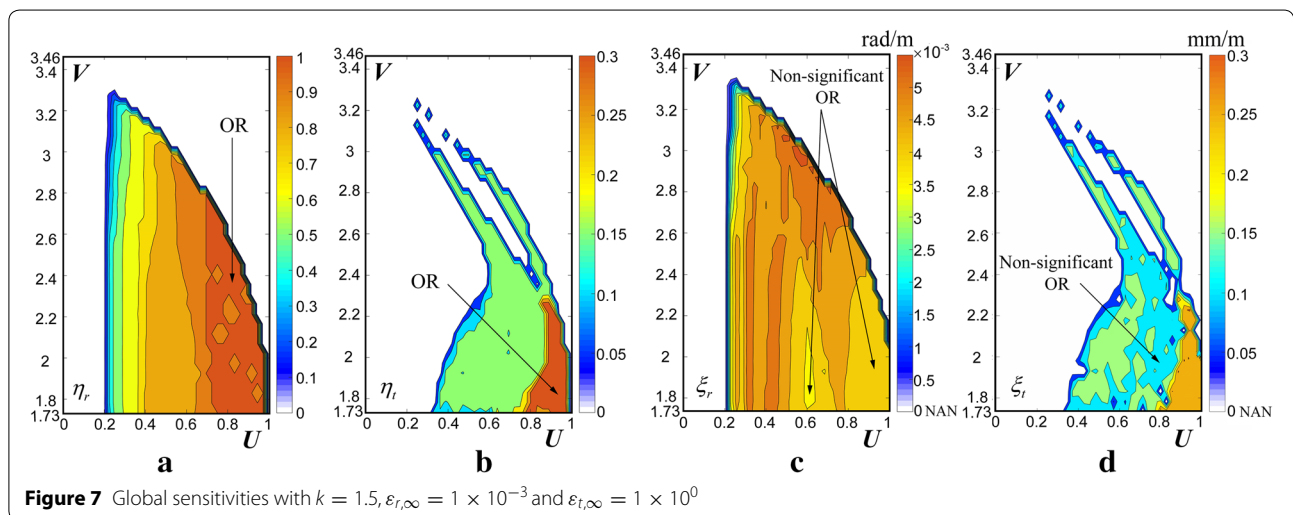


Figure 7 Global sensitivities with  $k = 1.5$ ,  $\epsilon_{r,\infty} = 1 \times 10^{-3}$  and  $\epsilon_{t,\infty} = 1 \times 10^0$



**Table 1 Selected candidates for architecture parameters**

No.	$U$	$V$	$l_1$	$l_2$	$l_3$	$r_1$ (mm)	$r_2$ (mm)	$r_3$ (mm)	$r_4$ (mm)
#1	0.98	1.8	1.07	0.95	1.04	490	534	476	519
#2	0.94	1.8	1.09	0.97	1.12	470	544	486	562
#3	0.94	1.9	1.18	0.88	1.11	470	588	442	553
#4	0.90	1.8	1.11	0.99	1.22	450	554	496	611
#5	0.90	1.9	1.20	0.90	1.20	450	598	452	601
#6	0.90	2.0	1.28	0.82	1.17	450	641	409	583
#7	0.90	2.1	1.37	0.73	1.11	450	684	366	556
#8	0.90	2.2	1.46	0.64	1.04	450	728	322	521
#9	0.86	1.8	1.13	1.01	1.33	430	564	506	664
#10	0.82	1.8	1.15	1.03	1.44	410	574	516	722

**Authors' Contributions**

WY was in charge of the whole trial; XC wrote the manuscript; NZ and LH assisted with mathematical modeling; QL assisted with performance evaluation. All authors read and approved the final manuscript.

**Authors' Information**

Xinxue Chai, born in 1988, is currently a lecturer at Zhejiang Sci-Tech University, China. She received her PhD degree on mechanism design and theory from Zhejiang Sci-Tech University, China, in 2017. Her research interests include mechanism theory of parallel manipulators and application.

Ningbin Zhang, born in 1990, is currently a PhD candidate at Shanghai Jiao Tong University, China. He received his master degree on mechatronic engineering from Zhejiang Sci-Tech University, China, in 2016. His research interests include mechanism theory of parallel manipulators and application.

Leiyong He, born in 1983, is currently a lecturer at Zhejiang Sci-Tech University, China. He received his PhD degree on mechanism design and theory from Zhejiang Sci-Tech University, China, in 2014. His research interests include robotics and application.

Qinchuan Li, born in 1975, is currently a professor at Zhejiang Sci-Tech University, China. He received his PhD degree on mechanism design and theory from Yanshan University, China, in 2013. His research interests include mechanism theory of parallel manipulators and application.

Wei Ye, born in 1988, is currently a lecturer at Zhejiang Sci-Tech University, China. He received his PhD degree on mechanism design and theory from Beijing Jiaotong University, China, in 2016. His research interests include design and analysis of reconfigurable parallel mechanisms.

**Acknowledgements**

Not applicable.

**Competing Interests**

The authors declare that they have no competing interests.

**Availability of Data and Materials**

All data generated or analysed during this study are included in this published article.

**Funding**

Supported by National Natural Science Foundation of China (Grant Nos. U1713202, 51525504).

Received: 20 July 2019 Revised: 5 November 2019 Accepted: 27 December 2019

Published online: 03 February 2020

**References**

- [1] W M Thomas. Friction stir butt welding: International Patent Application No. PCT/GB92/02203, 1991.
- [2] P L Threadgill, A J Leonard, H R Shercliff, et al. Friction stir welding of aluminium alloys. *International Materials Reviews*, 2009, 54(2): 49–93.
- [3] R Nandan, T DebRoy, H K D H Bhadeshia. Recent advances in friction-stir welding-process, weldment structure and properties. *Progress in Materials Science*, 2008, 53(6): 980–1023.
- [4] M Soron, I Kalaykov. A robot prototype for friction stir welding. *Proceedings of the IEEE Conference on Robotics, Automation and Mechatronics*, Bangkok, Thailand, June 1–3, 2006: 1–5.
- [5] A V Strombeck, C Schilling, J D Santos. Robotic friction stir welding-tool technology and applications. *Biuletyn Instytutu Spawalnictwa*, 2001, 45(6): 49–52.
- [6] A P Manogaran, G Racineux, J Y Hascoet. Measurement and comparison of force effort during friction stir welding in a parallel kinematic 5-axis milling machine. *Proceedings of the ASME 2012 11th Biennial Conference on Engineering Systems Design and Analysis*, Nantes, France, July 2–4, 2012: 115–121.
- [7] J Shi, Y H Wang, G Zhang, et al. Optimal design of 3-DOF PKM module for friction stir welding. *International Journal of Advanced Manufacturing Technology*, 2013, 66(9–12): 1879–1889.
- [8] Q C Li, W F Wu, J N Xiang, et al. A hybrid robot for friction stir welding. *Proceedings of the Institution of Mechanical Engineers Part C-Journal of Mechanical Engineering Science*, 2015, 229(14): 2639–2650.
- [9] C Z Wang, Y F Fang, S Guo, et al. Design and kinematical performance analysis of a 3-RUS/RRR redundantly actuated parallel mechanism for ankle rehabilitation. *Journal of Mechanisms and Robotics*, 2013, 5(4): 041003.
- [10] C Z Wang, Y F Fang, S Guo. Multi-objective optimization of a parallel ankle rehabilitation robot using modified differential evolution algorithm. *Chinese Journal of Mechanical Engineering*, 2015, 28(4): 702–715.
- [11] H B Qu, Y F Fang, S Guo. Structural synthesis of a class of 3-DOF wrist mechanisms with redundantly-actuated closed-loop units. *Proceedings of the Institution of Mechanical Engineers, Part C: Journal of Mechanical Engineering Science*, 2016, 230(2): 276–290.
- [12] J Wu, B B Zhang, L P Wang. Optimum design and performance comparison of a redundantly actuated solar tracker and its nonredundant counterpart. *Solar Energy*, 2016, 127: 36–47.
- [13] L P Wang, B B Zhang, J Wu. Optimum design of a 4-PSS-PU redundant parallel manipulator based on kinematics and dynamics. *Proceedings of the Institution of Mechanical Engineers, Part C: Journal of Mechanical Engineering Science*, 2016, 230(13): 2273–2284.
- [14] J Wu, B B Zhang, L P Wang. A measure for evaluation of maximum acceleration of redundant and nonredundant parallel manipulators. *Journal of Mechanisms and Robotics*, 2016, 8(2): 021001.

- [15] J Wu, T M Li, B Q Xu. Force optimization of planar 2-DOF parallel manipulators with actuation redundancy considering deformation. *Proceedings of Institution of Mechanical Engineers Part C: Journal of Mechanical Engineering Science*, 2013, 227(6): 1371–1377.
- [16] F G Xie, X J Liu, Y H Zhou. Optimization of a redundantly actuated parallel kinematic mechanism for a 5-degree-of-freedom hybrid machine tool. *Proceedings of the Institution of Mechanical Engineers, Part B: Journal of Engineering Manufacture*, 2014, 228(12): 1630–1641.
- [17] J Kim, F C Park, S J Ryu, et al. Design and analysis of a redundantly actuated parallel mechanism for rapid machining. *IEEE Transactions on Robotics and Automation*, 2001, 17(4): 423–434.
- [18] S H Kim, D Jeon, H P Shin, et al. Design and analysis of decoupled parallel mechanism with redundant actuator. *International Journal of Precision Engineering and Manufacturing*, 2009, 10(4): 93–99.
- [19] H Shin, S C Lee, W In, et al. Kinematic optimization of a redundantly actuated parallel mechanism for maximizing stiffness and workspace using Taguchi method. *Journal of Computational and Nonlinear Dynamics*, 2011, 6(1): 011017.
- [20] S Jin, J Kim, T Seo. Optimization of a redundantly actuated 5R symmetrical parallel mechanism based on structural stiffness. *Robotica*, 2015, 33(9): 1973–1983.
- [21] H Saafi, M A Laribi, S Zeghloul. Redundantly actuated 3-RRR spherical parallel manipulator used as a haptic device: improving dexterity and eliminating singularity. *Robotica*, 2015, 33(5): 1113–1130.
- [22] H Wang, L Y Kong, G L Chen, et al. Design of an actuation device with the capability of automatically distributing external load based on stability theorems. *Journal of Mechanical Design*, 2015, 137(8): 085001.
- [23] J H Choi, T W Seo, J W Lee. Torque distribution optimization of redundantly actuated planar parallel mechanisms based on a null-space solution. *Robotica*, 2014, 32(7): 1125–1134.
- [24] H Cheng, Y K Yiu, Z Li. Dynamics and control of redundantly actuated parallel manipulators. *IEEE-ASME Transactions on Mechatronics*, 2003, 8(4): 483–491.
- [25] A Müller. Problems in the control of redundantly actuated parallel manipulators caused by geometric imperfections. *Meccanica*, 2011, 46(1): 41–49.
- [26] A Müller. Consequences of geometric imperfections for the control of redundantly actuated parallel manipulators. *IEEE Transactions on Robotics*, 2010, 26(1): 21–31.
- [27] A Müller. On the terminology and geometric aspects of redundant parallel manipulators. *Robotica*, 2013, 31(1): 137–147.
- [28] H Y Wen, W L Xu, M Cong. Kinematic model and analysis of an actuation redundant parallel robot with higher kinematic pairs for jaw movement. *IEEE Transactions on Industrial Electronics*, 2015, 62(3): 1590–1598.
- [29] Z Gao, D Zhang. Performance analysis, mapping, and multi-objective optimization of a hybrid robotic machine tool. *IEEE Transactions on Industrial Electronics*, 2015, 62(1): 423–433.
- [30] T Yoshikawa. Analysis and control of robot manipulators with redundancy. In: M Brady, R P Paul. *Robotics Research: The First International Symposium*. Massachusetts: MIT Press Cambridge, 1984: 735–747.
- [31] J Ryu, J Cha. Volumetric error analysis and architecture optimization for accuracy of hexaslide type parallel manipulators. *Mechanism and Machine Theory*, 2003, 38(3): 227–240.
- [32] C Gosselin, J Angeles. The optimum kinematic design of a spherical three-degree-of-freedom parallel manipulator. *Journal of Mechanisms, Transmissions, and Automation in Design*, 1989, 111(2): 202–207.
- [33] J P Merlet. Jacobian, manipulability, condition number and accuracy of parallel robots. *Journal of Mechanical Design*, 2006, 128(1): 199–206.
- [34] E Schwartz, R Manseur, K Doty. Noncommensurate systems in robotics. *International Journal of Robot and Automation*, 2002, 17(2): 86–92.
- [35] J Angeles. The design of isotropic manipulator architectures in the presence of redundancies. *The International Journal of Robotics Research*, 1992, 11(3): 196–201.
- [36] I Mansouri, M Ouali. The power manipulability-A new homogeneous performance index of robot manipulators. *Robotics and Computer-Integrated Manufacturing*, 2011, 27(2): 434–449.
- [37] G Legnani, D Tosi, I Fassi, et al. The 'point of isotropy' and other properties of serial and parallel manipulators. *Mechanism and Machine Theory*, 2010, 45(10): 1407–1423.
- [38] H T Liu, T Huang, D G Chetwynd. A method to formulate a dimensionally homogeneous Jacobian of parallel manipulators. *IEEE Transactions on Robotics*, 2011, 27(1): 150–156.
- [39] C Han, J Kim, J Kim, et al. Kinematic sensitivity analysis of the 3-UPU parallel mechanism. *Mechanism and Machine Theory*, 2002, 37(8): 787–798.
- [40] S Briot, I A Bonev. Accuracy analysis of 3-DOF planar parallel robots. *Mechanism and Machine Theory*, 2008, 43(4): 445–458.
- [41] J Meng, D J Zhang, Z X Li. Accuracy analysis of parallel manipulators with joint clearance. *Journal of Mechanical Design*, 2009, 131(1): 011013.
- [42] P Cardou, S Bouchard, C Gosselin. Kinematic-sensitivity indices for dimensionally nonhomogeneous Jacobian matrices. *IEEE Transactions on Robotics*, 2010, 26(1): 166–173.
- [43] H Wang, G L Chen, Y Zhao, et al. Output error bound prediction of parallel manipulators based on the level set method. *Mechanism and Machine Theory*, 2010, 45(8): 1153–1170.
- [44] Q C Li, J M Herve. Type synthesis of 3-DOF RPR-equivalent parallel mechanisms. *IEEE Transactions on Robotics*, 2014, 30(6): 1333–1343.
- [45] Q C Li, L M Xu, Q H Chen, et al. New family of RPR-equivalent parallel mechanisms: Design and application. *Chinese Journal of Mechanical Engineering*, 2017, 30(2): 217–221.
- [46] C Yang, Q C Li, Q H Chen. Multi-objective optimization of parallel manipulators using a game algorithm. *Applied Mathematical Modelling*, 2019, 74: 217–243.
- [47] Z Huang, J F Liu, Y W Li. *On the degree of freedom-the general formula of the degree of freedom which has been searched for 150 years*. Beijing: Science Press, 2011. (in Chinese)
- [48] R M Murray, Z X Li, S S Sastry. *A mathematical introduction to robotic manipulation*. Florida: Chemical Rubber Company Press, 1994.
- [49] S Boyd, L Vandenberghe. *Convex optimization*. Cambridge: Cambridge University Press, 2004.
- [50] Q C Li, N B Zhang, F B Wang. New indices for optimal design of redundantly actuated parallel manipulators. *Journal of Mechanisms and Robotics*, 2017, 9(1): 011007.
- [51] L M Xu, X X Chai, Q C Li, et al. Design and experimental investigation of a new 2R1T overconstrained parallel kinematic machine with actuation redundancy. *Journal of Mechanisms and Robotics*, 2019, 11(3): 031016.

Submit your manuscript to a SpringerOpen<sup>®</sup> journal and benefit from:

- Convenient online submission
- Rigorous peer review
- Open access: articles freely available online
- High visibility within the field
- Retaining the copyright to your article

Submit your next manuscript at ► [springeropen.com](https://www.springeropen.com)