

RESEARCH

Open Access

# A gene expression signature of emphysema-related lung destruction and its reversal by the tripeptide GHK

Joshua D Campbell<sup>1,2</sup>, John E McDonough<sup>3</sup>, Julie E Zeskind<sup>1,2</sup>, Tillie L Hackett<sup>3</sup>, Dmitri V Pechkovsky<sup>3</sup>, Corry-Anke Brandsma<sup>4</sup>, Masaru Suzuki<sup>3</sup>, John V Gosselink<sup>3</sup>, Gang Liu<sup>1</sup>, Yuriy O Alekseyev<sup>5</sup>, Ji Xiao<sup>1</sup>, Xiaohui Zhang<sup>1</sup>, Shizu Hayashi<sup>3</sup>, Joel D Cooper<sup>6</sup>, Wim Timens<sup>4</sup>, Dirkje S Postma<sup>7</sup>, Darryl A Knight<sup>3</sup>, Marc E Lenburg<sup>1,2\*</sup>, James C Hogg<sup>3†</sup> and Avrum Spira<sup>1,2\*</sup>

## Abstract

**Background:** Chronic obstructive pulmonary disease (COPD) is a heterogeneous disease consisting of emphysema, small airway obstruction, and/or chronic bronchitis that results in significant loss of lung function over time.

**Methods:** In order to gain insights into the molecular pathways underlying progression of emphysema and explore computational strategies for identifying COPD therapeutics, we profiled gene expression in lung tissue samples obtained from regions within the same lung with varying amounts of emphysematous destruction from smokers with COPD (8 regions × 8 lungs = 64 samples). Regional emphysema severity was quantified in each tissue sample using the mean linear intercept (Lm) between alveolar walls from micro-CT scans.

**Results:** We identified 127 genes whose expression levels were significantly associated with regional emphysema severity while controlling for gene expression differences between individuals. Genes increasing in expression with increasing emphysematous destruction included those involved in inflammation, such as the B-cell receptor signaling pathway, while genes decreasing in expression were enriched in tissue repair processes, including the transforming growth factor beta (TGFβ) pathway, actin organization, and integrin signaling. We found concordant differential expression of these emphysema severity-associated genes in four cross-sectional studies of COPD. Using the Connectivity Map, we identified GHK as a compound that can reverse the gene-expression signature associated with emphysematous destruction and induce expression patterns consistent with TGFβ pathway activation. Treatment of human fibroblasts with GHK recapitulated TGFβ-induced gene-expression patterns, led to the organization of the actin cytoskeleton, and elevated the expression of integrin β1. Furthermore, addition of GHK or TGFβ restored collagen I contraction and remodeling by fibroblasts derived from COPD lungs compared to fibroblasts from former smokers without COPD.

**Conclusions:** These results demonstrate that gene-expression changes associated with regional emphysema severity within an individual's lung can provide insights into emphysema pathogenesis and identify novel therapeutic opportunities for this deadly disease. They also suggest the need for additional studies to examine the mechanisms by which TGFβ and GHK each reverse the gene-expression signature of emphysematous destruction and the effects of this reversal on disease progression.

\* Correspondence: [mensburg@bu.edu](mailto:mensburg@bu.edu); [aspira@bu.edu](mailto:aspira@bu.edu)

† Contributed equally

<sup>1</sup>Division of Computational Biomedicine, Department of Medicine, Boston University School of Medicine, 72 East Concord Street, Boston, MA 02118, USA

Full list of author information is available at the end of the article

## Background

Chronic obstructive pulmonary disease (COPD) is a significant public health problem worldwide and the third leading cause of death in the United States [1]. It is characterized by irreversible airflow limitation due to obstruction in the small conducting airways and emphysematous destruction of the gas exchanging tissue of the lung. Tobacco smoke is a significant risk factor for COPD and at least 25% of smokers develop this disease [2]. Current theories concerning disease pathogenesis include an imbalance between protease and anti-protease activity, induced apoptosis of alveolar cells through deregulation of pathways involved in oxidative stress, chronic inflammation, and aberrant tissue remodeling that lead to the destruction of the extracellular matrix (ECM) in the lung [3,4]. Lung repair and regeneration are potential processes to target with novel therapeutics in COPD as abnormal tissue repair by the epithelial-mesenchymal trophic unit can result in either fibrosis or destruction of the ECM [5]. However, the molecular mechanisms responsible for the pathogenesis of COPD remain poorly understood.

Several groups have profiled gene expression in patients with and without COPD or between patients with varying levels of airflow obstruction in order to understand differences in gene expression related to COPD [6-11]. While these studies have provided an initial look into the COPD transcriptome, their results primarily relied on the use of lung function tests to define the presence or degree of COPD. Lung function phenotypes can neither distinguish between obstruction in the small airways and emphysematous destruction of the lung parenchyma nor provide information about regional differences in disease severity. Recently, McDonough *et al.* used micro-CT scans to quantify the degree of emphysema in different regions of lungs from patients with severe COPD by measuring the mean linear intercept (Lm), a morphological measurement of alveolar destruction [12]. In order to gain insights into biological pathways associated with increasing emphysema severity within a patient and explore computational strategies for identifying COPD therapeutics, we obtained paired samples from eight regions at regular intervals between the apex and base of each explanted lung from six patients with severe COPD (Global Initiative for Chronic Obstructive Lung Disease (GOLD) stage IV) and two donor lungs. The degree of emphysematous destruction was quantified in one tissue sample from each region by Lm, while gene expression was profiled in the adjacent tissue sample from the same region.

We identified a number of genes whose expression is associated with increasing emphysematous destruction and found that pathways enriched among these genes were involved in the immune response and tissue remodeling. Using the Connectivity Map (CMap) [13], we found that

the tripeptide Gly-His-Lys (GHK) was able to reverse the aberrant patterns of gene expression associated with increasing emphysema severity and induce patterns of gene expression consistent with transforming growth factor beta (TGF $\beta$ ) pathway activation. Furthermore, we showed that by treating distal lung fibroblasts from COPD patients with GHK, we can restore normal contractile function through re-organization of the actin cytoskeleton and up-regulation of integrin- $\beta$ 1. These data further support the potential of GHK as a therapeutic in the treatment of emphysema.

## Materials and methods

### Sample acquisition and processing

Single lungs ( $n = 6$ ) were removed from patients treated for severe COPD by double lung transplantation at the University of Pennsylvania. Donor lungs ( $n = 2$ ) for which no suitable recipient was identified were released for research use from the Gift of Life Organ Procurement Organization in Philadelphia. This study was approved by the institutional review boards and conforms to the Helsinki Declaration. Written informed consent for use of these specimens and the relevant clinical and radiological data required for this research were obtained from each patient prior to surgery and from the next of kin of the persons whose donated lung was released for research. Each lung was removed from the thorax, cooled to 1.6°C, and transported to the laboratory where the bronchial stump was cannulated [14]. The lung was then inflated using a compressed air source attached to an underwater seal to slowly increase transpulmonary pressure (PL) from 0 to 30 cmH<sub>2</sub>O. The specimen was then held at a transpulmonary pressure of 10 cmH<sub>2</sub>O while frozen by liquid nitrogen vapor (-130°C). The frozen specimen had a multidetector CT scan followed by being cut into 2-cm thick slices in the same plane as the CT scan. Tissue samples were collected using a sharpened steel cylinder (cork bore diameter of 14 mm). One sample from a cluster of four core samples of lung obtained from each site was processed for micro-CT [12]. A companion core from the same cluster was used for the gene profiling and validation studies reported here. The representative nature of these samples with respect to the entire lung was established by comparing the densities of the sampled sites with the frequency distribution of the densities in the entire lung on multidetector CT as reported in McDonough *et al.* [12].

### Measurement of mean linear intercept

The severity of emphysema within each core was estimated by measuring Lm. A micro-CT scan of each core provided approximately 1,000 contiguous 16- $\mu$ m thick images. Lm was measured at 20 regularly spaced intervals of each of the micro-CT scans using a previously

validated grid of test lines projected onto the image and a custom macro linked to specialized software (ImagePro Plus; MediaCybernetics (Rockville, MD, USA). The number of intercepts between these lines and tissue was counted. Lm was calculated as the total length of the test lines divided by the number of cross-overs with tissue (equal to the number of intercepts divided by 2).

### Microarray sample processing

High molecular weight (mRNA-containing fraction) RNA was isolated from tissue cores using the miRNeasy Mini Kit (Qiagen, Valencia, CA, USA). RNA integrity was assessed using an Agilent 2100 Bioanalyzer and RNA purity was assessed using a NanoDrop spectrophotometer. RNA (1  $\mu$ g) was processed and hybridized onto the Human Exon 1.0 ST array (Affymetrix Inc., Santa Clara, CA, USA) according to the manufacturer's protocol as previously described [15]. Expression Console Version 1.1 (Affymetrix Inc.) was used to generate transcript-level gene expression estimates for the 'core' exon probesets via the robust multichip average (RMA) algorithm. Gene symbols of transcript IDs were retrieved using DAVID [16]. These gene expression data are available through the Gene Expression Omnibus (GEO) under the accession GSE27597.

### Microarray data analysis

Two linear mixed-effects models were used to identify gene expression profiles associated with the degree of regional emphysema severity as measured by Lm:

1.  $\text{Gene}_{ij} = \beta_0 + \beta_{\text{Slice}} \times \text{Slice}_{ij} + \alpha_j + \varepsilon_{ij}$
  2.  $\text{Gene}_{ij} = \beta_0 + \beta_{\text{Slice}} \times \text{Slice}_{ij} + \beta_{\text{Lm}} \times \text{Lm}_{ij} + \alpha_j + \varepsilon_{ij}$
- $i = 1, 2, \dots, 8; j = 1, 2, \dots, 8$

$$\varepsilon_{ij} \sim N(0, \sigma^2) \quad \alpha_j \sim N(0, \sigma_{\alpha_j}^2)$$

$\text{Gene}_{ij}$  is the  $\log_2$  expression value for sample  $i$  in patient  $j$  for a single gene. Slice is a fixed effect controlling for the position within the lung from which the sample core was obtained. The random term  $\varepsilon_{ij}$  represents the random error, which was assumed to be normally distributed,  $\alpha_j$  represents the random effect for patient, and  $\beta_0$  represents the intercept. Model 2 contains an additional fixed effect term for emphysema severity measured by the natural log of Lm. A gene's expression profile was considered associated with Lm if model 2 fit better than model 1 as determined by a significant  $P$ -value from a likelihood ratio test between the two models after applying a false discovery rate (FDR) correction. In the immunohistochemistry experiments, these linear models were also used to examine the relationship between Lm and the volume fraction of tissue with positive staining by substituting volume fraction (Vv) for gene expression as a dependent variable. All statistical analyses were conducted using R statistical

software v2.9.2 and the nlme package in Bioconductor v2.4 [17].

### Functional enrichment analysis

Functional enrichment analysis was performed using DAVID 2008 or Gene Set Enrichment Analysis (GSEA) v2.0.7 [16,18]. For DAVID, functional enrichment was examined among Gene Ontology categories, and KEGG and BIOCARTA pathways. All genes in the species *Homo sapiens* were used as a reference set. For GSEA, genes were ranked by the t-statistic of the  $\beta_{\text{Lm}}$  coefficient in the linear mixed-effects model and then analyzed for the enrichment of canonical pathways and Gene Ontology term gene sets obtained from MSigDB v2.5.

### Connecting to other gene-expression datasets

Using GSEA, sets of genes reported to change with COPD-related phenotypes or with TGF $\beta$  treatment in other gene-expression studies were examined in a ranked list of genes ordered from most induced in severe emphysema to most repressed in severe emphysema by the t-statistic of the  $\beta_{\text{Lm}}$  coefficient in the linear mixed-effects model. Conversely, sets of genes we identified as significantly positively or negatively associated with Lm were examined within gene lists ranked by the degree of differential expression as determined by re-analyzing previously published COPD-or TGF $\beta$ -related microarray studies. See Additional file 1 for a description of the data normalization procedures and statistical analyses used to generate gene sets and/or ranked gene lists for each of the previously published gene-expression datasets.

### Connectivity Map

In order to find compounds that reverse gene-expression patterns associated with emphysema severity, we generated separate signatures for each COPD or TGF $\beta$  gene-expression dataset examined in this study. Signatures were generated by identifying the 50 genes most up-regulated and the 50 genes most down-regulated with respect to a COPD or TGF $\beta$ -related phenotype. Each signature was queried against the CMap using the algorithm described by Lamb *et al.* [13]. See Additional file 1 for a description of the statistical analysis used to generate each query signature for each phenotype within each dataset. The list of all CMap query signatures used in this analysis include: 1) genes that change in expression as a function of regional emphysema severity in this study; genes that change in expression with 2) forced expiratory volume in 1 second (FEV $_1$ ), 3) FEV $_1$ /forced vital capacity (FVC), or 4) between cases versus controls in Bhattacharya *et al.* [7]; genes that change in expression between 5) controls versus emphysema patients or between 6) controls versus  $\alpha$ 1-antitrypsin disease in Golpon *et al.* [6]; genes that change in expression with 7) FEV $_1$  or 8) diffusing capacity of carbon

monoxide (DLCO) in Spira *et al.*[9]; genes that change in expression with 9) FEV<sub>1</sub>, 10) FEV<sub>1</sub>/FVC, 11) DLCO, 12) non-smokers versus GOLD2, or 13) non-smokers versus GOLD3 in Wang *et al.*[10]; and genes that change in expression with TGF $\beta$  treatment from 14) Qin *et al.*[19], 15) Classen *et al.*[20], 16) Renzoni *et al.*[21], 17) Koinuma *et al.*[22], and 18) Malizia *et al.*[23]. For comparison of the CMap data to our *in vitro* studies of the effects of GHK in primary lung fibroblasts, raw data for GHK-treated and control samples were downloaded from the CMap website and normalized using MAS5.0 with the Affymetrix CDF. Genes were ranked by a paired *t*-test between treatment and controls of different batches and compared to gene sets of GHK and TGF $\beta$  treatment using GSEA.

#### Isolation and culture of lung fibroblasts

Lung tissue of former smokers (defined as quitting smoking for at least one year before surgery) with normal lung function or GOLD stage IV COPD was obtained from patients undergoing surgery for resection for pulmonary carcinoma or lung transplantation. Fibroblast cultures were established from parenchymal lung tissue by an explant technique as previously described [24]. Isolated cells were characterized as fibroblasts by morphological appearance and expression pattern of specific proteins as described previously [24,25]. Fibroblast cultures were stored into liquid nitrogen until use.

#### Immunofluorescence

Fibroblast cultures at passage 3 were cultured in eight-well chamber slides (Gibco, Burlington, ON, Canada) in growth medium (DMEM, 10% fetal bovine serum (FBS), penicillin, and streptavidin from Invitrogen, Burlington, ON, Canada). After reaching 70% confluence, fibroblasts were cultured for 24 h in 1% FBS DMEM and then incubated with either TGF $\beta$ 1 10ng/ml (Peprotech, Dollard des Ormeaux, Quebec, Canada), GHK 10 nM (Sigma, Markham, Ontario, Canada) or control media (1% FBS DMEM, penicillin, streptavidin) for a further 48 h. After stimulations, chamber slides were fixed with 4% paraformaldehyde for 20 minutes, blocked in 10% goat serum in phosphate-buffered saline (PBS) with 0.1% saponin for 1 h and then stained with integrin- $\beta$ 1 antibody (M-106, Santa Cruz Biotechnology, Santa Cruz, CA, USA) in 0.1% saponin in PBS for 2 h at room temperature. Following washing in PBS with 0.1% saponin and 0.1% Tween 20, secondary antibody conjugated with goat anti-Mouse IgG Alexa Fluor 488 and Phalloidin conjugated with Alexa Fluor 594 were incubated for 2 h at room temperature. Following final washes, cultures were incubated with DAPI 1 ng/ml and then coverslipped with cyto seal. Confocal images were acquired with a Leica AOBSP2 laser scanning confocal microscope (Leica, Heidelberg, Germany). The images were overlaid and the contrast

enhancements were performed on the images using Volocity software™ (Improvisations Inc., Boston, MA, USA) as previously described [26].

#### Collagen gel contraction assays

Fibroblast cultures at passage 3 were cultured in six-well tissue culture plates (Gibco, Canada) in growth medium (DMEM, 10% FBS, penicillin, and streptavidin from Invitrogen, Canada). After reaching 70% confluence, fibroblasts were cultured for 24 h in 1% FBS DMEM and then incubated with TGF $\beta$ 1 10 ng/ml (Peprotec, Canada), GHK 10 nM (Sigma, Canada) or growth media control for a further 48 h. Prior to the end of the treatment time point, a 12-well tissue culture plate was incubated with 1% bovine serum albumin in DMEM for 2 h. The medium was removed and then 500  $\mu$ l of 0.4 mg/ml type I collagen (BD Biosciences, Mississauga, ON, Canada) was added and allowed to polymerize for 8 h at 37°C. The treated fibroblasts were then trypsinized and seeded at  $2 \times 10^5$  cells/500  $\mu$ l of 1% FBS DMEM, penicillin, streptavidin in duplicate on the collagen gels and cultured for an additional 24 h at 37°C in 5% CO<sub>2</sub>. The gels were imaged before and after and the extent of gel contraction measured using Image Pro Software.

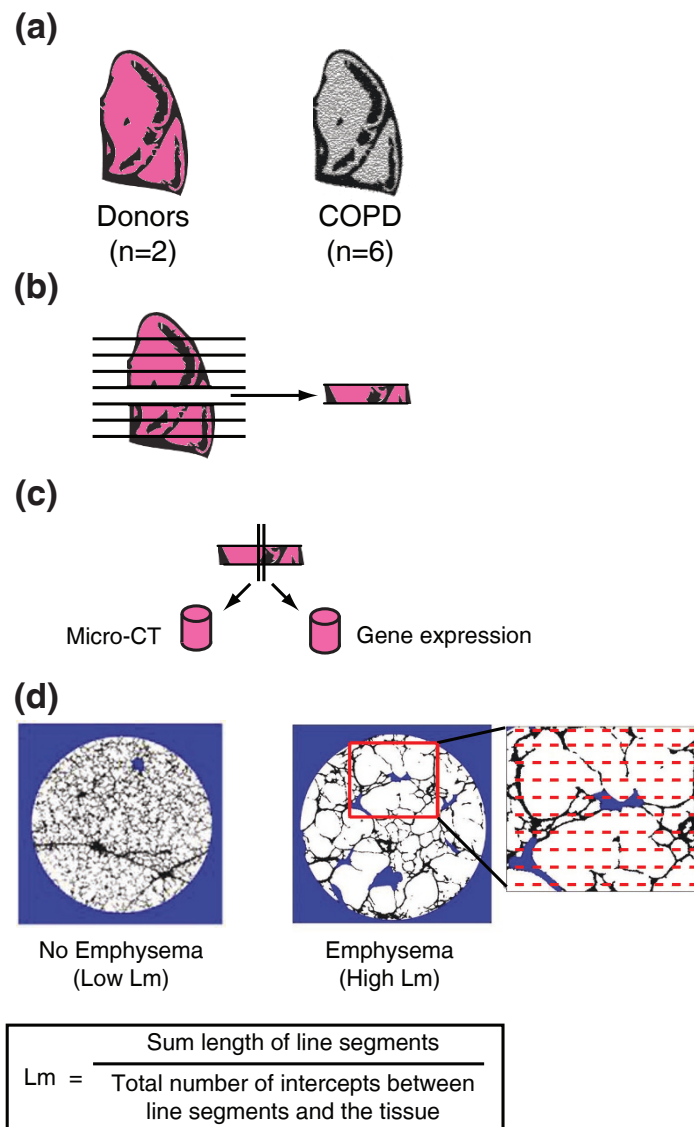
#### Multi-photon and second harmonic generation microscopy

The collagen gels were fixed with 4% paraformaldehyde for 20 minutes and washed in PBS with 0.1% saponin and 0.1% Tween 20 before being incubated with phalloidin conjugated with Alexa Fluor 594 for 1 h at room temp. Gels were then mounted on to a glass slide using Secure-seal™ imaging spacers (size 20 mm; Sigma) and aqueous mounting media. The gels were then imaged using second harmonic generation microscopy to determine fibrillar collagen as previously described [27]. For each cell volume, Z-section images were compiled and the three-dimensional image restoration was performed using Volocity software (Improvisations, Inc.). A noise-removal filter with a kernel size of  $3 \times 3$  was applied to these three-dimensional images.

## Results

#### Study population

Lm was quantified using micro-CT scans in eight samples taken at regular intervals from apex to base of lungs from six subjects that required transplantation for COPD and two organ donors (Figure 1). Table 1 shows demographic information and clinical characteristics of the eight subjects used in this study. As expected, samples from subjects with COPD had a higher mean and a greater range of Lm values between samples compared to those from donor lungs, indicating that there are regions of severe emphysema in COPD subjects (Table 1).



**Figure 1 Outline of study design.** (a) Whole lungs were removed from patients with severe COPD and from donors, inflated with air, and rapidly frozen in liquid nitrogen vapor. (b) The frozen specimens were cut into 2-cm slices from apex to base of the lung. (c) Adjacent tissue cores were removed from 8 different slices of each lung (8 patients with 8 slices = 64 total regions). (d) Micro-CT was used to measure Lm at 20 evenly spaced intervals throughout one core from each region.

**Table 1 Subject demographics for lung tissue samples**

Patient ID	Description	Sex	Age	Pack years	Smoking status	Lm mean ± SD (µm)	Lm range (µm)
6965	COPD	M	62	50	Former	716 ± 164	494-982
6967	COPD	F	61	25	Former	414 ± 82	334-585
6968	COPD	F	63	38	Former	724 ± 252	357-1,013
6969	COPD <sup>a,b</sup>	F	56	54	Former	1,822 ± 1270	521-4,620
6970	COPD <sup>c</sup>	M	55	15	Former	1,352 ± 599	647-2,551
6971	COPD	M	59	30	Former	1,097 ± 441	720-2,101
6982	Donor	M	59	-	Never	384 ± 47	344-473
6983	Donor	M	62	24	Former	289 ± 41	231-352

Subjects with COPD had FEV<sub>1</sub>/FVC <70% and FEV<sub>1</sub> <25% predicted. <sup>a-c</sup>Some patients had other diseases: <sup>a</sup>von Willebrand disease; <sup>b</sup>hypertension; <sup>c</sup>α1-antitrypsin deficiency disease.

Subject 6967 was diagnosed with a pure airway obstruction COPD phenotype without emphysema [28]. Consistent with this diagnosis, the distribution of Lm measurements for this patient closely resembles the distribution of Lm measurements from the donor lungs. Subject 6970 was diagnosed with  $\alpha$ 1-antitrypsin deficiency. The remaining four subjects with COPD had the centrilobular emphysematous phenotype commonly observed in smokers. The distribution of emphysematous destruction in tissue cores from these COPD patients range from little to no emphysema ( $Lm < 600$ ) to very severe emphysema ( $Lm > 1,000$ ) [12]. Subject 6969 had one sample excluded from subsequent analysis because its Lm measurement was an outlier (more than three times the interquartile range of the distribution of Lm measurements in all cores from all lungs examined).

#### Pathways associated with regional emphysema severity

Using linear mixed-effect models, the expression levels of 127 genes were significantly associated with Lm and thus associated with regional emphysema severity (Figure 2a;  $FDR < 0.10$ ; see Additional file 2 for the analytic results for all genes). Using DAVID [16] or GSEA [18], we found that genes with functions in the B-cell receptor signaling pathway were over-represented among the up-regulated genes, while genes involved in cellular structure, integrin signaling, extracellular matrix production, focal adhesion, blood vessel morphogenesis, and the vascular endothelial growth factor and TGF $\beta$  pathways were enriched among the down-regulated genes ( $FDR < 0.05$ ; see Additional file 3 for a list of all significantly enriched pathways). The expression of CD79A, a component of the B-cell receptor, increased in expression with increasing emphysema severity (Figure 2b), and the expression of ACVRL1 (also known as activin-like kinase I), a receptor in the TGF $\beta$  pathway, decreased in expression with increasing emphysema severity (Figure 2c). These two genes are shown as examples of the characteristic relationship between Lm and gene expression as observed in Figure 2a. To predict transcription factors that might be responsible for the observed patterns of differential expression, we inferred a gene expression relevance network using the Context Likelihood of Relatedness (CLR) algorithm [29]. Transcription factors with the most connections to other genes included EPAS1 (also known as HIF-2 $\alpha$ ), KLF13, TAL1, TBX3, GATA2, and BCL11A (Additional file 4). Fourteen genes whose expression is significantly correlated with regional emphysema severity or transcription factors that are highly connected to these genes in the relevance network were selected for quantitative RT-PCR validation in a subset of tissue cores from subjects with severe emphysema (see Additional file 1 for methods). Twelve out of the fourteen genes had a significant correlation between the expression values derived from the microarray and quantitative RT-PCR, showing that the

association of gene expression with regional emphysema severity is reproducible across assays (Pearson correlation,  $P < 0.05$ ; Additional file 5).

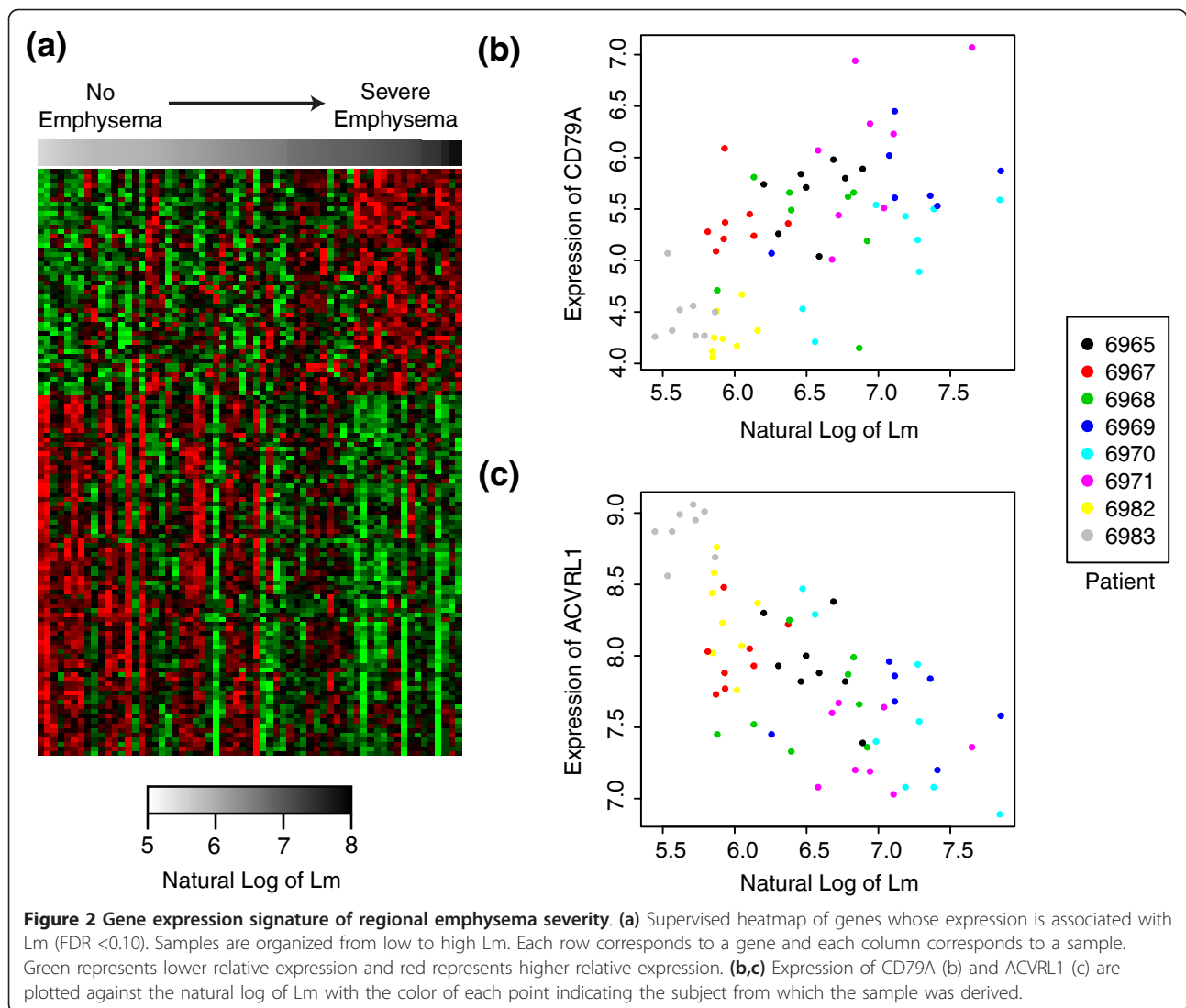
In order to demonstrate that the 127 gene signature is related to regional emphysema severity within individuals and not to differences between donors and COPD patients or to differences in levels of emphysema between COPD patients, we repeated the same statistical analysis while only including the five COPD patients with emphysema and standardizing the Lm measurements within each patient core to a mean of zero and a standard deviation of one (Z-score). Using GSEA, the sets of up- and down-regulated genes in the 127-gene signature identified in the previous analysis with all eight patients and unscaled Lm measurements were concordantly enriched among genes differentially expressed when only the five emphysema patients were analyzed with Z-scored Lm measurements, indicating that this gene signature is associated with regional emphysema severity ( $FDR < 0.001$ , GSEA; see Additional file 6 for the enrichment plot).

#### Validation of pathways up-regulated in regions of severe emphysema

In order to investigate whether the up-regulation of components of the B cell receptor signaling pathway is associated with a change in the quantity of B cells in lung tissue, we quantified the Vv of CD79A protein, a marker for B cells, in relation to Lm by immunohistochemistry (see Additional file 1 for methods). CD79A-positive B cells were observed in the alveolar and small airway wall tissue (Figure 3). Vv was quantified in alveolar tissue for all 64 samples and in small airway tissue for 43 samples that contained small airways and was found to be positively correlated to Lm in both the alveolar and small airway wall tissue ( $P < 0.001$ ), indicating that B cell abundance increases as emphysema severity increases.

#### Validation of pathways down-regulated in regions of severe emphysema

Several members of the TGF $\beta$  pathway were among the genes that had decreased expression as a function of regional emphysema severity. These genes included *ACVRL1*, *ENG*, *TGFBR2*, and *SMAD6*. Other components in this family, including *BMPR2* ( $FDR$  q-value = 0.125) and *SMAD7* ( $FDR$  q-value = 0.223), also showed evidence of modest down-regulation while *SMAD1* showed evidence of modest up-regulation ( $FDR$  q-value = 0.101). To determine whether the TGF $\beta$  pathway might be affected by emphysema pathogenesis, we used seven previously published studies that had examined the effect of TGF $\beta$  ligands on gene expression to develop a collection of signatures of TGF $\beta$  pathway activation [19-23,30,31]. Genes that exhibited significantly decreased expression with increasing emphysema severity were enriched among



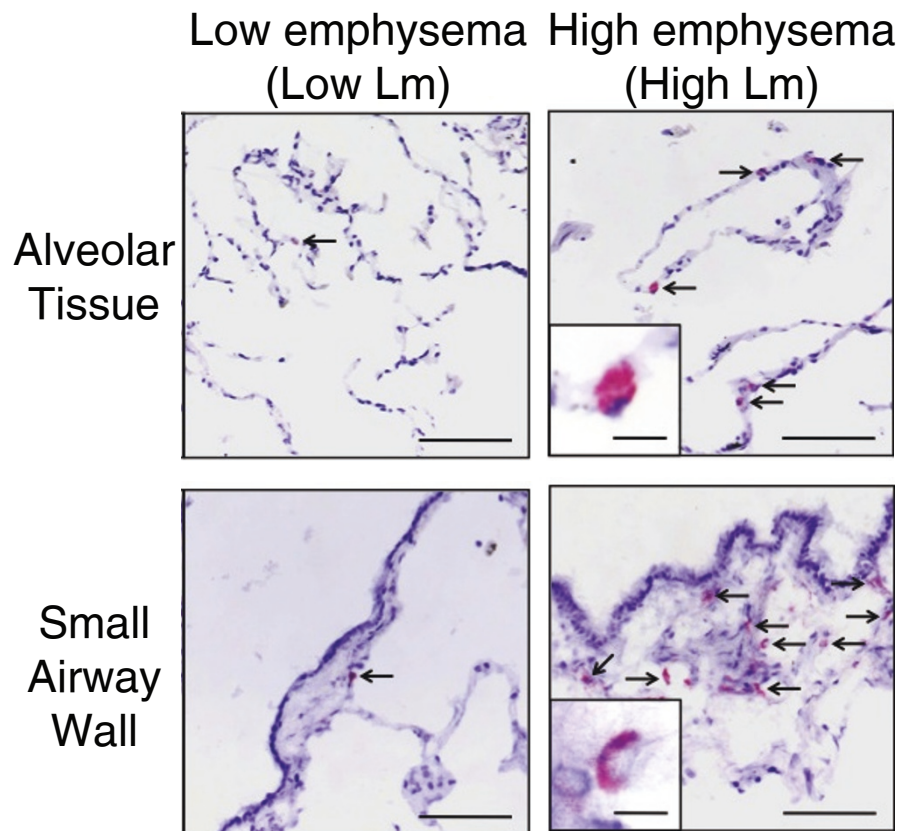
genes induced in response to TGF $\beta$  treatment in a total of three datasets (FDR <0.05, GSEA). Similarly, the sets of genes most induced by TGF $\beta$  from each of the seven datasets examined were enriched among genes whose expression decreased as a function of emphysema severity (FDR <0.05, GSEA). As an example, the enrichment of genes associated with emphysema severity among genes changing with TGF $\beta$  treatment in the dataset from Malizia *et al.* [23] is shown in Figure 4a,b. See Additional file 7 for the GSEA enrichment plots for all seven datasets.

To further validate these findings, we cultured human lung fibroblasts with and without TGF $\beta$ 1 and found that the set of genes most induced by TGF $\beta$ 1 were enriched among genes that decrease in expression with increasing regional emphysema severity (FDR <0.05, GSEA; see Additional file 8 for the GSEA enrichment plot and Additional file 1 for the fibroblast culture methods). Immunostaining of lung tissue from the same regions on which we

performed gene expression analysis localized SMAD2, a down-stream signal transducer of TGF $\beta$ , to the alveolar and airway walls while members of the bone morphogenetic protein (BMP) pathway, including SMAD6 and SMAD1, were primarily seen in vascular endothelial cells (Additional file 9).

#### Relationship to expression profiles in other COPD studies

In order to show that the gene expression signature of regional emphysema severity is present in larger cohorts of patients with earlier stages of disease, we used GSEA to examine the relationship between genes associated with regional emphysema severity in this dataset and genes associated with COPD phenotypes in other cross-sectional studies [6-11]. The genes that decreased in expression with increasing emphysema severity were significantly enriched among genes down-regulated as a function of COPD-related phenotypes in four of the five previously



**Figure 3 Validation of differential expression for CD79A by immunohistochemistry.** Representative images of CD79A-positive cells (arrows) in the alveolar tissue and the small airway walls. Positive staining appears red. Scale = 200  $\mu\text{m}$ ; inset = 10  $\mu\text{m}$ .

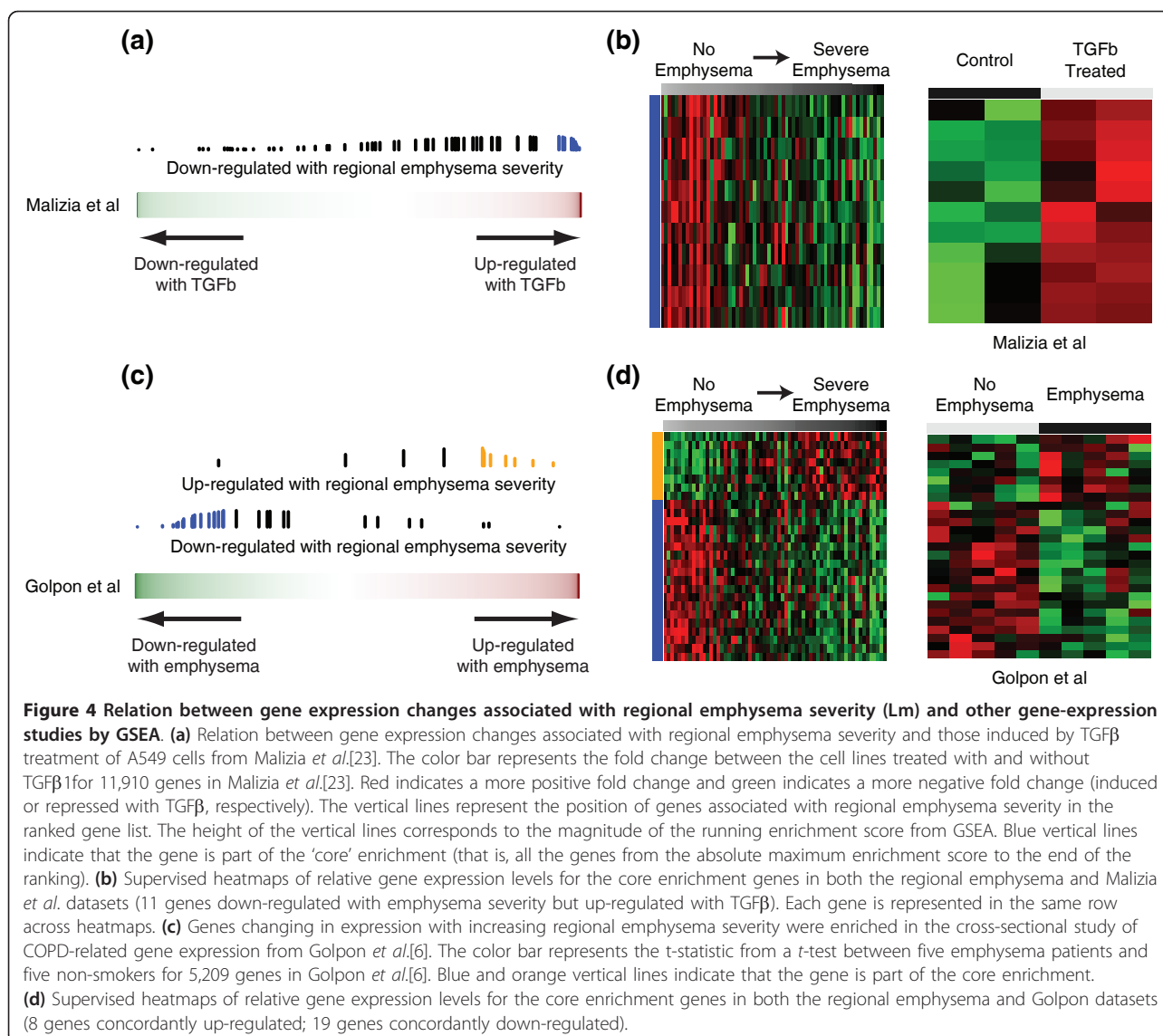
published datasets that we examined (FDR <0.05, GSEA; Additional file 10). In addition, genes that increased in expression with increasing emphysema severity were enriched amongst genes up-regulated as a function of COPD-related phenotypes in three of the five datasets (FDR <0.05, GSEA). As an example, the enrichment of genes associated with regional emphysema severity among genes differentially expressed with the presence of emphysema in the dataset from Golpon *et al.*[6] is shown in Figure 4c,d. Conversely, sets of genes reported to be differentially expressed with COPD in four of the six other cross-sectional studies were enriched among the genes changing in expression with increasing regional emphysema severity (FDR <0.05, GSEA; Additional file 10). Examples of genes validated by quantitative RT-PCR in this study and concordantly differentially expressed in other studies are shown in Additional file 11. Many of these datasets, such as Bhattacharya *et al.*[7] and Wang *et al.*[10], contained larger numbers of patients with a variety of stages of disease (for example, GOLD stage 0 through GOLD stage IV). The enrichment of genes associated with regional emphysema severity with COPD-related phenotypes in these other datasets suggests that

the biological processes associated with increasing emphysema severity within a patient with severe COPD also vary in individuals with earlier stages of disease.

#### Prediction of novel therapeutics for emphysema

In order to identify compounds that might reverse the gene-expression pattern associated with progression of emphysema, we utilized the CMap [13], a compendium of microarray experiments that measure the effect of therapeutic compounds on gene expression in cancer cell lines. Signatures of genes that 1) change in expression with regional emphysema severity in this dataset, 2) change in expression with lung function measures in other datasets [6,7,9,10], or 3) change in expression with TGF $\beta$  treatment in other datasets [19-23] were each used as separate queries into the CMap data. We found that gene expression changes resulting from treatment with the tripeptide GHK, a compound thought to accelerate wound healing [32,33], were negatively correlated with expression patterns associated with increasing regional emphysema severity ( $P = 0.006$ ) and the COPD-related expression patterns observed in Bhattacharya *et al.*[7] and Golpon *et al.* [6] ( $P < 0.05$ ). In addition, the gene expression effects of





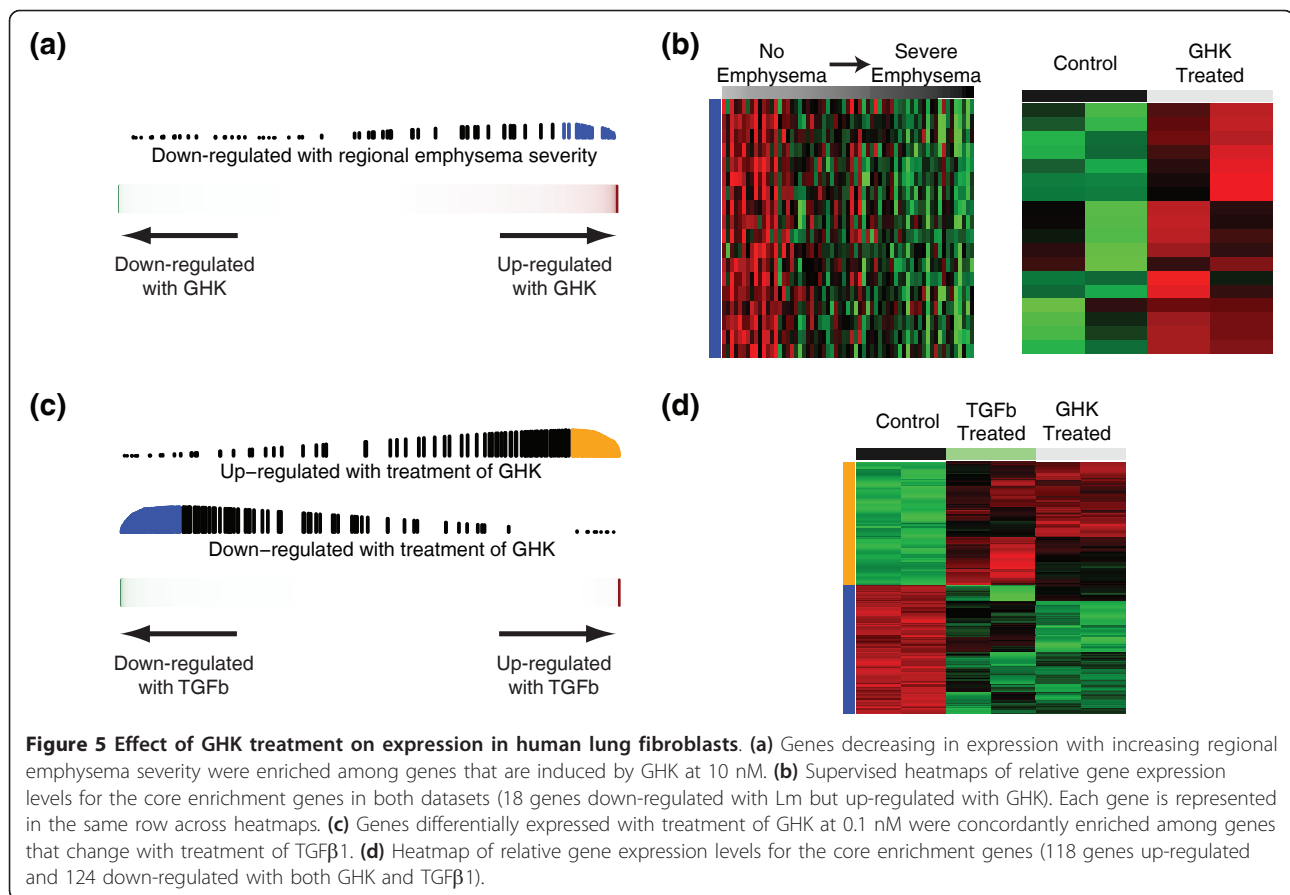
GHK are similar to the effects of TGFβ treatment observed by Malizia *et al.*[23] ( $P = 0.004$ ).

As the CMap examined the effect of GHK in cancer cell lines, we next sought to verify the effect of GHK treatment in a cell type more relevant to emphysema pathogenesis. We utilized human lung fibroblasts because fibroblasts are the major interstitial cell within the alveolar unit that can synthesize and remodel the ECM and previous studies have demonstrated that GHK can induce ECM production in dermal fibroblasts [32-34]. Human lung fibroblast cultures were treated with two concentrations of GHK or with TGFβ1 (see Additional file 1 for methods). Gene expression profiling of these cells demonstrated that the 200 genes most induced by GHK at 1 μM in cancer cell lines in the CMap dataset were enriched among genes that increased after treatment with GHK at 0.1 nM in

fibroblast cultures (FDR < 0.05, GSEA). Furthermore, genes whose expression is decreased with increasing emphysema severity are enriched among genes induced by GHK at 10 nM (FDR < 0.05, GSEA; Figure 5a,b). Genes whose expression is altered by GHK treatment at either concentration are also enriched among genes that change with TGFβ1 treatment (FDR < 0.05, GSEA; Figure 5c,d). See Additional file 8 for the GSEA enrichment plots showing the relationship between GHK, TGFβ, and emphysema severity signatures.

#### Reversal of COPD-related phenotypes in fibroblasts by GHK

Genes induced in human lung fibroblasts after treatment with GHK were enriched in actin cytoskeleton organization and focal adhesion pathways (FDR < 0.05,

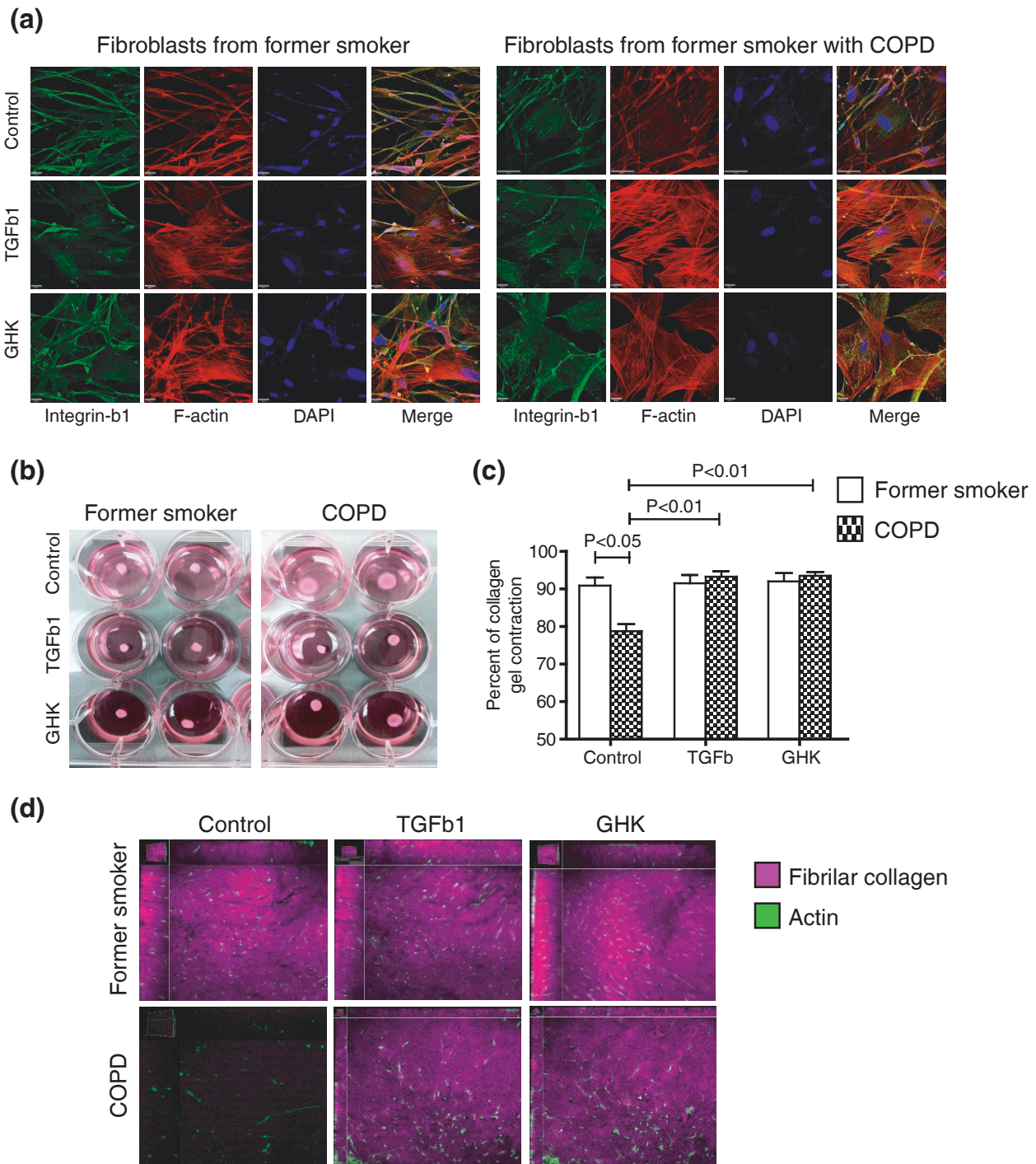


DAVID). These included integrins involved in collagen attachment, such as *ITGB1*. *ITGB1* gene expression was also down-regulated with increasing emphysema severity in lung tissue ( $P = 0.008$ ). Resolution of damaged tissue requires mesenchymal cells to attach to collagen fibers through integrin-dependent mechanisms and generate mechanical tension via the actin cytoskeleton to promote tissue contraction and wound size reduction. Using distal lung fibroblasts isolated from former smokers with and without COPD, we found that GHK (10 nM), like TGFβ1 (10 ng/ml), induced alterations in integrin-β1 localization (green staining in Figure 6a) and reorganized actin to form contractile filaments (red staining in Figure 6a). We further demonstrated using a three-dimensional collagen gel contraction bioassay that distal lung fibroblasts derived from former smokers with COPD ( $n = 5$ ) were unable to fully contract collagen I gels compared to fibroblasts obtained from former smokers without COPD ( $n = 5$ ,  $P < 0.05$ ; Figure 6b,c; see Additional file 12 for subject demographics), similar to what has been previously described [35]. However, fibroblasts derived from COPD patients first treated for 48 h with either TGFβ1 or GHK were able to induce full collagen I gel contraction comparable to that observed in fibroblasts from former

smokers without COPD ( $P < 0.01$ , Figure 6b,c). Using the second harmonic generation properties of fibrillar collagen and multi-photon microscopy, we confirmed that fibroblasts from former smokers with COPD were unable to efficiently remodel collagen into fibrils (Figure 6d). Importantly, following 48 h of treatment with TGFβ1 or GHK on lung fibroblasts from former smokers with COPD, we were able to restore this intrinsic defect, which we propose is through organization of the actin cytoskeleton to a contractile phenotype as demonstrated by the confocal images displayed in Figure 6a.

## Discussion

The goal of this study was to identify gene expression changes associated with regional emphysema severity in order to elucidate biological processes underlying the progression of emphysema and to identify potential COPD therapeutics. By measuring gene expression from regions of varying emphysema severity within the same lung and by using a morphologic measurement of airspace size (Lm), which reflects the degree of alveolar destruction, we were able to identify gene expression changes associated specifically with the emphysematous component of COPD.



**Figure 6 Effect of GHK treatment on collagen contraction by fibroblasts from former smokers with COPD.** **(a)** Representative immunofluorescent images of distal lung fibroblasts from former smokers with and without COPD treated with GHK (10 nM), TGFβ1 (10 ng/ml), or media control for 48 h and stained with phalloidin to localize the actin cytoskeleton (red), integrin-β1 antibody (green) and DAPI to localize nuclei (blue). **(b)** Representative images of collagen I gel bioassays at 24 h after being seeded with distal lung fibroblasts from former smokers with and without COPD previously treated with GHK, TGFβ1, or media control for 48 h. **(c)** The percentage of collagen I contraction was significantly decreased in fibroblasts derived from former smokers with COPD compared to former smokers without COPD ( $P < 0.05$ ) but was significantly increased with addition of TGFβ1 or GHK ( $P < 0.01$ ). **(d)** Representative enface Z-stack slices of three-dimensional reconstructed collagen I gel bioassays demonstrating actin in fibroblasts (green, phalloidin) and second harmonic signal originating from collagen fibrils (purple, 414 nM). Fibroblasts from former smokers with COPD were unable to efficiently remodel collagen into fibrils. However, this intrinsic defect was restored with treatment of TGFβ1 or GHK.

Interestingly, there was significant enrichment between genes differentially expressed in COPD or associated with worsening lung function in other datasets and those we found to be associated with regional emphysema severity. Importantly, this similarity supports the notion that regional differences in emphysema severity reflect the processes that occur with general COPD pathogenesis and progression and are not only present in patients with end-stage disease. Overall, these observations suggest a similarity in the gene expression alterations that accompany airflow obstruction, gas exchange abnormalities, and alveolar destruction measured by Lm.

A common characteristic in the pathology of COPD is progressive lymphocyte infiltration of the small airways and alveolar walls [36]. In addition, the formation of tertiary lymphoid organs within this infiltration suggests the presence of an adaptive immune response to persistent foreign or autoimmune antigens [37,38]. The present study extends these observations by showing that the expression patterns of several components of the B-cell receptor signaling pathway have increased expression in regions of severe emphysema. Ig $\alpha$  (CD79A) and Ig $\beta$  (CD79B) are proteins that associate with the B-cell receptor and transmit its signal upon stimulation. Immunohistochemistry showed a significant relationship between the volume fraction of the airway wall and alveolar tissue positively stained for CD79A and an increase in Lm. This relationship supports an increased number of B cells in both airway wall and alveolar tissues and is consistent with the induction of CD79A during tissue destruction associated with the increase in Lm.

The TGF $\beta$  signaling pathway is involved in a variety of cellular processes, including immune response, extracellular matrix remodeling, angiogenesis, and cell differentiation. This pathway has also been implicated in a variety of diseases such as cancer and fibrosis [39]. It has been hypothesized that the TGF $\beta$  pathway could play a role in COPD pathogenesis, but its role is not completely understood [40]. Togo *et al.* [35] found that fibroblasts isolated from COPD patients exhibited reduced chemotaxis, reduced nuclear to cytoplasmic ratios of phosphorylated SMAD3, and decreased  $\alpha$ -smooth muscle actin production compared to controls when treated with TGF $\beta$ . Decreased mRNA expression or protein levels for TGF $\beta$ 1, TGFBR1 [41], SMAD3 [42], SMAD6 [43], and SMAD7 [41,43] have been reported in more advanced stages of COPD or fibroblasts from COPD patients. In both alveolar and bronchiolar epithelium of emphysematous lungs, a decrease in phosphorylated SMAD2 has been shown by immunohistochemistry [44]. In normal human lung parenchyma, repair processes in response to mechanical injury are associated with increased TGF $\beta$  signaling, while a decrease in expression has been observed for TGF $\beta$ -related genes with worsening lung

function in patients with COPD [25,45]. Furthermore, association studies have identified both promoter and coding region polymorphisms in the TGF $\beta$ 1 gene that associate with increased risk for COPD [46-48]. In the present study, we identified several components of the TGF $\beta$  and BMP pathways that have decreasing expression with increasing emphysema severity. In the BMP pathway, ACVRL1 and ENG are receptors involved in the phosphorylation of SMAD1 and are expressed in the mature lung vasculature. The changing expression of SMAD6 and SMAD1, their localization predominantly to vascular endothelial cells, and the roles of ACVRL1 and ENG in angiogenesis support the hypothesis of aberrant tissue remodeling in the lung vasculature during emphysema pathogenesis. In the TGF $\beta$  pathway, TGFBR2 is a receptor involved in the phosphorylation of SMAD2/3 and is important for many tissue remodeling processes, including wound repair. Moreover, genes found to be induced by TGF $\beta$  in diverse studies were down-regulated in regions of severe emphysema. The localization of SMAD2 to alveolar and airway tissue and the decreased TGF $\beta$  pathway activity seen with increasing emphysema severity support the hypothesis that a decrease in TGF $\beta$  pathway activity also contributes to emphysema pathogenesis.

As COPD remains a major public health concern due to lack of effective therapeutic strategies, we sought to use computational methods to identify compounds that might modulate molecular processes associated with emphysema pathogenesis. The CMap is a large compendium of microarray experiments that measures the effect of over 1,000 compounds on gene expression in several cell lines [13]. By querying a gene expression signature of disease pathogenesis against the CMap dataset, one can find compounds that elicit a pattern of gene expression that is the opposite to the disease-related gene expression profile. This can lead to the hypothesis that such compounds, since they reverse the disease-related gene expression pattern, are potential therapeutics for that disease. This approach has been recently successful in the therapeutic repositioning of the antiulcer drug cimetidine to lung adenocarcinoma and the anticonvulsant drug topiramate to inflammatory bowel disease [49,50]. In these studies, signatures for each disease were derived using several publicly available gene-expression datasets and queried in the CMap. Candidate compounds or drugs that could significantly reverse the disease-related signatures of gene expression were further validated *in vitro*, showing that this computational method is a viable approach for identifying novel therapeutics.

Using the CMap dataset, we identified a relationship between the gene expression changes induced by the tripeptide GHK and those that are repressed with increasing emphysema severity. Intriguingly, we further found that

GHK-treatment induced a pattern of gene expression similar to that resulting from TGF $\beta$  pathway activation. We replicated both of these findings in human lung fibroblasts, which are the major interstitial cells that maintain tissue structural integrity by sculpting the connective tissue. GHK-Cu is a natural tripeptide that, in human plasma, can be found at a concentration of 200 ng/ml at the age of 20 years but drops to around 80 ng/ml by the age of 60 years [34]. Characterization GHK-Cu in skin wound repair models suggests that it induces wound contraction, cell proliferation, angiogenesis, and increased expression of antioxidant enzymes and integrins [34,51]. Direct evidence for the ability of GHK-Cu to promote wound healing comes from experimental rat models where GHK treatment causes an acceleration of healing and a concentration-dependent increase of connective tissue and other ECM components [32,33]. These effects are consistent with the gene expression alterations induced by GHK and TGF $\beta$  treatment. Moreover, we confirmed these similarities by demonstrating that GHK and TGF $\beta$  induced significantly higher expression and re-organization of actin and integrin- $\beta$ 1 in distal lung fibroblasts.

We further assessed the ability of GHK and TGF $\beta$  to induce tissue contraction. As in previous studies [35], we demonstrated that distal lung fibroblasts derived from COPD patients have intrinsic defects in collagen I contraction compared to fibroblasts derived from former smokers without COPD. When fibroblasts from COPD lungs were treated with GHK or TGF $\beta$  contraction and remodeling of collagen gels was induced to levels comparable to fibroblasts from former smokers without COPD. We further demonstrated that the collagen contraction induced in COPD fibroblasts by GHK involves the organization of collagen I gels into collagen fibrils using multi-photon microscopy. Taken together, these data further support the hypothesis in which a wound-healing-like process is diminished as a function of emphysema progression and further suggest that this process is related to the TGF $\beta$  pathway.

While the number of subjects in this study for genomic analysis was small, the analysis of eight specimens per lung representing different degrees of emphysema from each individual allowed us to detect gene expression changes specifically associated with regional emphysema severity. We further demonstrated that these genes are concordantly differentially expressed in previous cross-sectional studies involving larger numbers of individuals with varying degrees of airflow limitation. These results validate the gene expression differences associated with regional emphysema severity in independent cohorts from different clinical settings and support the hypothesis that the genes whose expression is associated with regional emphysema severity reflect the activity of true disease-associated processes. As demonstrated by our

micro-CT data, COPD is a heterogeneous disease within the lung [12]. Further studies will be required to assess whether COPD-associated differences in ECM remodeling by distal fibroblasts *in vitro* is associated with the regional disease severity in the tissue from which the fibroblasts are derived.

## Conclusions

This study has provided insights into molecular processes associated with emphysematous destruction of the lung and revealed mechanisms that contribute to the pathogenesis of COPD. Whole genome gene-expression analysis supports the role of the immune response in regional emphysema and elucidates additional pathways involved in the process of emphysematous destruction. The suggestion that progressive emphysematous destruction is associated with down-regulation of genes involved in or downstream of tissue remodeling and wound repair pathways supports a role for defects in ECM homeostasis and angiogenesis in the emphysematous destruction that occurs with chronic inflammation in COPD. We propose that these processes could be linked through decreased TGF $\beta$  pathway activation. These data are supported by our identification of GHK as a compound with the potential to mimic TGF $\beta$  pathway activity and induce collagen contraction, an important functional component of wound repair.

## Additional material

**Additional file 1: Supplementary methods.**

**Additional file 2: Statistical results for gene expression analysis.**

**Additional file 3: Functional categories enriched among genes associated with regional emphysema severity.**

**Additional file 4: Gene expression relevance network.** Dark blue circles are genes that have expression significantly correlated with Lm; light blue circles are all other genes. Edges are indicated by green (positive correlation) or red (negative correlation) lines.

**Additional file 5: RT-PCR validation of 14 genes associated with regional emphysema severity.**

**Additional file 6: Confirmation of gene expression changes associated with regional emphysema severity (Lm) within individuals with emphysema using GSEA.** Genes associated with unscaled Lm measurements identified using all eight patients in the analysis are concordantly enriched among genes associated with scaled Lm measurements (Z-scored within each patient) using only the five emphysema patients (FDR <0.001). These results demonstrate that the 127 gene signature is related to regional emphysema severity within individuals and not to differences between donors and COPD patients or to differences in levels of emphysema between COPD patients. Orange and blue color bars represent the t-statistics from correlations of gene expression with Lm. The vertical black lines represent the position of genes in the gene set among the ranked gene list. The length of the black lines corresponds to the magnitude of the running enrichment score from GSEA.

**Additional file 7: Relation between gene expression changes associated with regional emphysema severity (Lm) and studies of TGF $\beta$ -related gene expression using GSEA.** Genes associated with Lm are enriched among the genes that are differentially expressed in response to TGF $\beta$  treatment in datasets from (a) Classen *et al.*[20], (b) Koinuma *et al.*

[22], and (c) Malizia et al.[23]. (d) Genes most induced by TGF $\beta$  in seven studies [19-23,30,31] are enriched among the genes that are associated with Lm. Orange and blue color bars represent the t-statistics from correlations of gene expression with a continuous variable. Red and green color bars represent the fold change between samples treated with and without TGF $\beta$ . The vertical black lines represent the position of genes in the gene set among the ranked gene list. The length of the black lines corresponds to the magnitude of the running enrichment score from GSEA. Enrichments with an FDR q-value <0.05 were considered significant.

**Additional file 8: Relation between gene expression changes associated with regional emphysema severity (Lm) and gene expression changes that occur with treatment of GHK or TGF $\beta$  in fibroblast cell lines using GSEA.** (a) Genes increasing in expression in response to treatment with GHK or TGF $\beta$  are enriched among genes that decrease with increasing emphysema severity. (b) Genes differentially expressed with TGF $\beta$  treatment or in response to GHK in the Connectivity Map are enriched among genes that change in expression with GHK (0.1 nM) in fibroblast cell lines. (c) Genes that are differentially expressed with TGF $\beta$  treatment or that are down-regulated with increasing emphysema severity are enriched among genes that change in expression with GHK (10 nM) in fibroblast cell lines. (d) Genes that are differentially expressed in response to GHK are concordantly enriched among genes that change in expression with TGF $\beta$  treatment in fibroblast cell lines. Orange and blue color bars represent the t-statistics from correlations of gene expression with a continuous variable. Red and green color bars represent the t-statistic between treated and untreated samples. The vertical black lines represent the position of genes among the ranked gene list. The length of the black lines corresponds to the magnitude of the running enrichment score from GSEA. Enrichments with an FDR q-value <0.05 were considered significant.

**Additional file 9: Localization of members of the TGF $\beta$  superfamily using immunohistochemistry.** Representative images of positive SMAD2 staining (arrows) in the (a) alveolar and (b) small airway wall tissue. (c) Representative image of positive SMAD6 staining in vascular endothelial cells (arrows) and macrophages (arrowheads). (d) Representative image of weak SMAD1 staining in vascular endothelial cells (arrows). Representative images are shown for control IgG staining in the (e) alveolar wall tissue, (f) airway wall tissue, and (g) blood vessels. Scale bar = 200  $\mu$ m.

**Additional file 10: Relation between gene expression changes associated with regional emphysema severity (Lm) and cross-sectional studies of COPD-related gene expression using GSEA.** Genes associated with Lm are enriched among the genes found to be associated with the presence of COPD or degree of airflow obstruction in datasets from (a) Golpon et al.[6], (b) Spira et al.[9], (c) Wang et al.[10], and (d) Bhattacharya et al.[7]. (e) Genes previously found to be associated with COPD-related clinical variables [6,8-10] are enriched among the genes associated with Lm. Orange and blue color bars represent the t-statistics from correlations of gene expression with a continuous variable. Red and green color bars represent the t-statistic from a t-test between cases and controls. The vertical black lines represent the position of genes in the gene set among the ranked gene list. The length of the black lines corresponds to the magnitude of the running enrichment score from GSEA. Enrichments with an FDR q-value <0.05 were considered significant.

**Additional file 11: Examples of genes associated with Lm and validated by quantitative RT-PCR that were also differentially expressed in other COPD-related gene-expression datasets.** Genes such as *ACVRL1*, *SMAD6*, *CCR7*, and *CXCL13* were associated with increasing regional emphysema severity and concordantly differentially expressed in other datasets such as Golpon et al.[6] and/or Wang et al.[10].

**Additional file 12: Subject demographics for lung fibroblast cultures.**

## Abbreviations

BMP: bone morphogenetic protein; CMap: Connectivity Map; COPD: chronic obstructive pulmonary disease; CT: computed tomography; DLCO: diffusing capacity of carbon monoxide; DMEM: Dulbecco's modified Eagle's medium; ECM: extracellular matrix; FBS: fetal bovine serum; FDR: false discovery rate;

FEV<sub>1</sub>: forced expiratory volume in 1 second; FVC: forced vital capacity; GOLD: Global Initiative for Chronic Obstructive Lung Disease; GSEA: Gene Set Enrichment Analysis; Lm: mean linear intercept; PBS: phosphate-buffered saline; TGF: transforming growth factor; Vv: volume fraction.

## Authors' contributions

AS, JCH, MEL, DAK, DSP, and WT conceived and designed the experiments. JEM, TLH, DVP, CAB, MS, JVG, GL, YOA, JX, XZ, and SH performed the experiments. JDC, JEZ, TLH, DVP, and CAB analyzed the data. JDC and JCH contributed materials. JDC, MEL, JCH, and AS wrote the manuscript. All authors read and approved the final version for publication.

## Competing interests

Boston University has intellectual property related to the work described in this manuscript.

## Acknowledgements

We thank A Wright, D Horng, and P Sanchez for supporting studies in this manuscript; W Elliott for help with the immunohistochemistry; F Shaheen for help with cell culture; K Steiling for reviewing this manuscript; T Abraham at the UBC James Hogg Research Centre Imaging Cellular Imaging and Biophysics Core facility for help with imaging the collagen gels. This work was funded by the National Heart, Lung and Blood Institute (R01HL095388 to AS and MEL), National Center for Advancing Translational Science (UL1 TR000157 to AS and MEL), National Science Foundation (Integrative Graduate Education and Research Traineeship to JDC and JEZ), British Columbia Lung Association, Canadian Institute for Health Research, Parker B Francis Foundation (Senior Fellowship to TLH) and the Dutch Asthma Foundation and European Respiratory Society (International Research Fellowship to CAB).

## Author details

<sup>1</sup>Division of Computational Biomedicine, Department of Medicine, Boston University School of Medicine, 72 East Concord Street, Boston, MA 02118, USA. <sup>2</sup>Bioinformatics Program, Boston University, 44 Cummington Street, Boston, MA 02215, USA. <sup>3</sup>UBC James Hogg Research Centre, Providence Heart + Lung Institute, St. Paul's Hospital and Department of Pathology and Laboratory Medicine, University of British Columbia, 1081 Burrard St, Vancouver, BC V6Z 1Y6, Canada. <sup>4</sup>Department of Pathology and Medical Biocology, University Medical Center Groningen, University of Groningen, Hanzeplein 1, 9713 Groningen, Netherlands. <sup>5</sup>Department of Pathology and Laboratory Medicine, Boston University School of Medicine, 72 East Concord Street, Boston, MA 02118, USA. <sup>6</sup>Hospital of the University of Pennsylvania, Division of Thoracic Surgery, 3400 Spruce Street 6 White Building, Philadelphia, PA 19104, USA. <sup>7</sup>Department of Pulmonary Diseases, University Medical Center Groningen, University of Groningen, Hanzeplein 1, 9713 Groningen, Netherlands.

Received: 5 March 2012 Revised: 14 August 2012

Accepted: 16 August 2012 Published: 31 August 2012

## References

1. Miniño AM, Xu J, Kochanek KD, Statistics V: Deaths: Preliminary Data for 2008. *National Vital Statistics Reports Volume 59 NVSS*; 2010 [http://www.cdc.gov/nchs/data/nvsr/nvsr59/nvsr59\_02.pdf].
2. Lange P, Scharling H, Fabricius P, Vestbo J: Developing COPD: a 25 year follow up study of the general population. *Thorax* 2006, **61**:935-939.
3. Park JW, Rytter SW, Choi AMK: Functional significance of apoptosis in chronic obstructive pulmonary disease. *COPD* 2007, **4**:347-353.
4. Postma DS, Timens W: Remodeling in asthma and chronic obstructive pulmonary disease. *Proc Am Thorac Soc* 2006, **3**:434-439.
5. Rennard SI, Bailey KL: Chronic obstructive pulmonary disease exacerbations: accurate and easy measurement promises much. *Am J Respir Crit Care Med* 2012, **185**:1139-1141.
6. Golpon HA, Coldren CD, Zamora MR, Cosgrove GP, Moore MD, Tuder RM, Geraci MW, Voelkel NF: Emphysema lung tissue gene expression profiling. *Am J Respir Cell Mol Biol* 2004, **31**:595-600.
7. Bhattacharya S, Srisuma S, Demeo DL, Shapiro SD, Bueno R, Silverman EK, Reilly JJ, Mariani TJ: Molecular biomarkers for quantitative and discrete COPD phenotypes. *Am J Respir Cell Mol Biol* 2009, **40**:359-367.

8. Ning W, Li C-J, Kaminski N, Feghali-Bostwick C, Alber SM, Di YP, Otterbein SL, Song R, Hayashi S, Zhou Z, Pinsky DJ, Watkins SC, Pilewski JM, Sciruba FC, Peters DG, Hogg JC, Choi AMK: **Comprehensive gene expression profiles reveal pathways related to the pathogenesis of chronic obstructive pulmonary disease.** *Proc Natl Acad Sci USA* 2004, **101**:14895-14900.
9. Spira A, Beane J, Pinto-Plata V, Kadar A, Liu G, Shah V, Celli B, Brody JS: **Gene expression profiling of human lung tissue from smokers with severe emphysema.** *Am J Respir Cell Mol Biol* 2004, **31**:601-610.
10. Wang I-M, Stepaniants S, Boie Y, Mortimer JR, Kennedy B, Elliott M, Hayashi S, Loy L, Coulter S, Cervino S, Harris J, Thornton M, Raubertas R, Roberts C, Hogg JC, Crackower M, O'Neill G, Paré PD: **Gene expression profiling in patients with chronic obstructive pulmonary disease and lung cancer.** *Am J Respir Crit Care Med* 2008, **177**:402-411.
11. Francis SMS, Larsen JE, Pavey SJ, Bowman RV, Hayward NK, Fong KM, Yang I: **Expression profiling identifies genes involved in emphysema severity.** *Respir Res* 2009, **10**:81.
12. McDonough JE, Yuan R, Suzuki M, Seyednejad N, Elliott WM, Sanchez PG, Wright AC, Geffer WB, Litzky L, Coxson HO, Paré PD, Sin DD, Pierce RA, Woods JC, McWilliams AM, Mayo JR, Lam SC, Cooper JD, Hogg JC: **Small-airway obstruction and emphysema in chronic obstructive pulmonary disease.** *N Engl J Med* 2011, **365**:1567-1575.
13. Lamb J, Crawford ED, Peck D, Modell JW, Blat IC, Wrobel MJ, Lerner J, Brunet J-P, Subramanian A, Ross KN, Reich M, Hieronymus H, Wei G, Armstrong S, Haggarty SJ, Clemons P, Wei R, Carr S, Lander ES, Golub TR: **The Connectivity Map: using gene-expression signatures to connect small molecules, genes, and disease.** *Science* 2006, **313**:1929-1935.
14. Choong CK, Haddad FJ, Martinez C, Hu DZ, Pierce J, Meyers BF, Patterson GA, Cooper JD: **A simple, reproducible, and inexpensive technique in the preparation of explanted emphysematous lungs for ex vivo studies.** *J Thorac Cardiovasc Surg* 2005, **130**:922-923.
15. Zhang X, Liu G, Lenburg ME, Spira A: **Comparison of smoking-induced gene expression on Affymetrix Exon and 3'-based expression arrays.** *Genome Inform* 2007, **18**:247-257.
16. Dennis G, Sherman BT, Hosack D, Yang J, Gao W, Lane HC, Lempicki R: **DAVID: Database for Annotation, Visualization, and Integrated Discovery.** *Genome Biol* 2003, **4**:P3.
17. Gentleman RC, Carey VJ, Bates DM, Bolstad B, Dettling M, Dudoit S, Ellis B, Gautier L, Ge Y, Gentry J, Hornik K, Hothorn T, Huber W, Iacus S, Irizarry R, Leisch F, Li C, Maechler M, Rossini AJ, Sawitzki G, Smyth G, Tierney L, Yang JYH, Zhang J: **Bioconductor: open software development for computational biology and bioinformatics.** *Genome Biol* 2004, **5**:R80.
18. Subramanian A, Tamayo P, Mootha VK, Mukherjee S, Ebert BL, Gillette M, Paulovich A, Pomeroy SL, Golub TR, Lander ES, Mesirov JP: **Gene set enrichment analysis: a knowledge-based approach for interpreting genome-wide expression profiles.** *Proc Natl Acad Sci USA* 2005, **102**:15545-15550.
19. Qin H, Chan MWY, Liyanarachchi S, Balch C, Potter D, Souriraj JJ, Cheng ASL, Agosto-Perez FJ, Nikonova EV, Yan PS, Lin H-J, Nephew KP, Saltz JH, Showe LC, Huang THM, Davuluri RV: **An integrative ChIP-chip and gene expression profiling to model SMAD regulatory modules.** *BMC Syst Biol* 2009, **3**:73.
20. Classen S, Zander T, Eggle D, Chemnitz JM, Brors B, Büchmann I, Popov A, Beyer M, Eils R, Debey S, Schultze JL: **Human resting CD4+ T cells are constitutively inhibited by TGF beta under steady-state conditions.** *J Immunol* 2007, **178**:6931-6940.
21. Renzoni E, Abraham DJ, Howat S, Shi-Wen X, Sestini P, Bou-Gharios G, Wells AU, Veeraraghavan S, Nicholson AG, Denton CP, Leask A, Pearson JD, Black CM, Welsh KI, du Bois RM: **Gene expression profiling reveals novel TGFbeta targets in adult lung fibroblasts.** *Respir Res* 2004, **5**:24.
22. Koinuma D, Tsutsumi S, Kamimura N, Taniguchi H, Miyazawa K, Sunamura M, Imamura T, Miyazono K, Aburatani H: **Chromatin immunoprecipitation on microarray analysis of Smad2/3 binding sites reveals roles of ETS1 and TFAP2A in transforming growth factor beta signaling.** *Mol Cell Biol* 2009, **29**:172-186.
23. Malizia AP, Keating DT, Smith SM, Walls D, Doran PP, Egan JJ: **Alveolar epithelial cell injury with Epstein-Barr virus upregulates TGFbeta1 expression.** *Am J Physiol Lung Cell Mol Physiol* 2008, **295**:L451-460.
24. Noordhoek JA, Postma DS, Chong LL, Menkema L, Kauffman HF, Timens W, van Straaten JFM, van der Geld YM: **Different modulation of decorin production by lung fibroblasts from patients with mild and severe emphysema.** *COPD* 2005, **2**:17-25.
25. Pechkovsky DV, Hackett TL, An SS, Shaheen F, Murray L, Knight D: **Human lung parenchyma but not proximal bronchi produces fibroblasts with enhanced TGF-beta signaling and alpha-SMA expression.** *Am J Respir Cell Mol Biol* 2010, **43**:641-651.
26. Hackett T-L, Warner SM, Stefanowicz D, Shaheen F, Pechkovsky DV, Murray L, Argentieri R, Kicic A, Stick SM, Bai TR, Knight D: **Induction of epithelial-mesenchymal transition in primary airway epithelial cells from patients with asthma by transforming growth factor-beta1.** *Am J Respir Crit Care Med* 2009, **180**:122-133.
27. Abraham T, Carthy J, McManus B: **Collagen matrix remodeling in 3-dimensional cellular space resolved using second harmonic generation and multiphoton excitation fluorescence.** *J Struct Biol* 2010, **169**:36-44.
28. Bignon J, Khoury F, Even P, Andre J, Brouet G: **Morphometric study in chronic obstructive bronchopulmonary disease. Pathologic, clinical, and physiologic correlations.** *Am Rev Respir Dis* 1969, **99**:669-695.
29. Faith JJ, Hayete B, Thaden JT, Mogno I, Wierzbowski J, Cottarel G, Kasif S, Collins JJ, Gardner TS: **Large-scale mapping and validation of Escherichia coli transcriptional regulation from a compendium of expression profiles.** *PLoS Biol* 2007, **5**:e8.
30. Chambers RC, Leoni P, Kaminski N, Laurent GJ, Heller RA: **Global expression profiling of fibroblast responses to transforming growth factor-beta1 reveals the induction of inhibitor of differentiation-1 and provides evidence of smooth muscle cell phenotypic switching.** *Am J Pathol* 2003, **162**:533-546.
31. Verrecchia F, Chu ML, Mauviel A: **Identification of novel TGF-beta/Smad gene targets in dermal fibroblasts using a combined cDNA microarray/promoter transactivation approach.** *J Biol Chem* 2001, **276**:17058-17062.
32. Siméon A, Wegrowski Y, Bontemps Y, Maquart FX: **Expression of glycosaminoglycans and small proteoglycans in wounds: modulation by the tripeptide-copper complex glycyl-L-histidyl-L-lysine-Cu(2+).** *J Invest Dermatol* 2000, **115**:962-968.
33. Maquart FX, Bellon G, Chaqour B, Wegrowski J, Patt LM, Trachy RE, Monboisse JC, Chastang F, Birembaut P, Gillerly P: **In vivo stimulation of connective tissue accumulation by the tripeptide-copper complex glycyl-L-histidyl-L-lysine-Cu2+ in rat experimental wounds.** *J Clin Invest* 1993, **92**:2368-2376.
34. Pickart L: **The human tri-peptide GHK and tissue remodeling.** *J Biomater Sci Polym Ed* 2008, **19**:969-988.
35. Togo S, Holz O, Liu X, Sugiura H, Kamio K, Wang X, Kawasaki S, Ahn Y, Fredriksson K, Skold CM, Mueller KC, Branscheid D, Welker L, Watz H, Magnussen H, Rennard SI: **Lung fibroblast repair functions in patients with chronic obstructive pulmonary disease are altered by multiple mechanisms.** *Am J Respir Crit Care Med* 2008, **178**:248-260.
36. Hogg JC, Chu F, Utokaparch S, Woods R, Elliott WM, Buzatu L, Cherniack RM, Rogers RM, Sciruba FC, Coxson HO, Paré PD: **The nature of small-airway obstruction in chronic obstructive pulmonary disease.** *N Engl J Med* 2004, **350**:2645-2653.
37. Brusselle GG, Demoor T, Bracke KR, Brandsma C-a, Timens W: **Lymphoid follicles in (very) severe COPD: beneficial or harmful?.** *Eur Respir J* 2009, **34**:219-230.
38. van der Strate BW, Postma DS, Brandsma C-A, Melgert BN, Luinge M, Geerlings M, Hylkema MN, van den Berg A, Timens W, Kerstjens HaM: **Cigarette smoke-induced emphysema: A role for the B cell?.** *Am J Respir Crit Care Med* 2006, **173**:751-758.
39. Globe GC, Schiemann WP, Lodish HF: **Role of transforming growth factor beta in human disease.** *N Engl J Med* 2000, **342**:1350-1358.
40. Morty RE, Königshoff M, Eickelberg O: **Transforming growth factor-beta signaling across ages: from distorted lung development to chronic obstructive pulmonary disease.** *Proc Am Thorac Soc* 2009, **6**:607-613.
41. Zandvoort A, Postma DS, Jonker MR, Noordhoek J, Vos JTWM, van der Geld YM, Timens W: **Altered expression of the Smad signalling pathway: implications for COPD pathogenesis.** *Eur Respir J* 2006, **28**:533-541.
42. Zandvoort A, Postma DS, Jonker MR, Noordhoek J, Vos JTWM, Timens W: **Smad gene expression in pulmonary fibroblasts: indications for defective ECM repair in COPD.** *Respir Res* 2008, **9**:83.
43. Springer J, Scholz FR, Peiser C, Groneberg D, Fischer A: **SMAD-signaling in chronic obstructive pulmonary disease: transcriptional down-regulation of inhibitory SMAD 6 and 7 by cigarette smoke.** *Biol Chem* 2004, **385**:649-653.

44. Leppäranta O, Myllärniemi M, Salmenkivi K, Kinnula VL, Keski-Oja J, Koli K: **Reduced phosphorylation of the TGF-Beta signal transducer Smad2 in emphysematous human lung.** *COPD* 2009, **6**:234-241.
45. Gosselink JV, Hayashi S, Elliott WM, Xing L, Chan B, Yang L, Wright C, Sin D, Paré PD, Pierce J, Pierce R, Patterson A, Cooper J, Hogg JC: **Differential expression of tissue repair genes in the pathogenesis of chronic obstructive pulmonary disease.** *Am J Respir Crit Care Med* 2010, **181**:1329-1335.
46. Smolonska J, Wijmenga C, Postma DS, Boezen HM: **Meta-analyses on suspected chronic obstructive pulmonary disease genes: a summary of 20 years' research.** *Am J Respir Crit Care Med* 2009, **180**:618-631.
47. van Diemen CC, Postma DS, Vonk JM, Bruinenberg M, Nolte IM, Boezen HM: **Decorin and TGF-beta1 polymorphisms and development of COPD in a general population.** *Respir Res* 2006, **7**:89.
48. van Diemen CC, Postma DS, Aulchenko YS, Snijders PJLM, Oostra B, van Duijn CM, Boezen HM: **Novel strategy to identify genetic risk factors for COPD severity: a genetic isolate.** *Eur Respir J* 2010, **35**:768-775.
49. Dudley JT, Sirota M, Shenoy M, Pai RK, Roedder S, Chiang AP, Morgan A, Sarwal MM, Pasricha PJ, Butte AJ: **Computational repositioning of the anticonvulsant topiramate for inflammatory bowel disease.** *Sci Transl Med* 2011, **3**:96ra76.
50. Sirota M, Dudley JT, Kim J, Chiang AP, Morgan A, Sweet-Cordero A, Sage J, Butte AJ: **Discovery and preclinical validation of drug indications using compendia of public gene expression data.** *Sci Transl Med* 2011, **3**:96ra77.
51. Kang Y-A, Choi H-R, Na J-H, Huh C-H, Kim M-J, Youn S-W, Kim K-H, Park K-C: **Copper-GHK increases integrin expression and p63 positivity by keratinocytes.** *Arch Dermatol Res* 2009, **301**:301-306.

doi:

**Cite this article as:** Campbell *et al.*: A gene expression signature of emphysema-related lung destruction and its reversal by the tripeptide GHK. *Genome Medicine* 2012 **4**:67.

**Submit your next manuscript to BioMed Central  
and take full advantage of:**

- Convenient online submission
- Thorough peer review
- No space constraints or color figure charges
- Immediate publication on acceptance
- Inclusion in PubMed, CAS, Scopus and Google Scholar
- Research which is freely available for redistribution

Submit your manuscript at  
[www.biomedcentral.com/submit](http://www.biomedcentral.com/submit)

