

RESEARCH

Open Access

Relative hyperlactatemia and hospital mortality in critically ill patients: a retrospective multi-centre study

Alistair D Nichol^{*1,3}, Moritoki Egi², Ville Pettila¹, Rinaldo Bellomo^{1,4}, Craig French⁵, Graeme Hart⁴, Andrew Davies³, Edward Stachowski⁶, Michael C Reade⁴, Michael Bailey^{1,3} and David James Cooper^{1,3}

Abstract

Introduction: Higher lactate concentrations within the normal reference range (*relative hyperlactatemia*) are not considered clinically significant. We tested the hypothesis that relative hyperlactatemia is independently associated with an increased risk of hospital death.

Methods: This observational study examined a prospectively obtained intensive care database of 7,155 consecutive critically ill patients admitted to the Intensive Care Units (ICUs) of four Australian university hospitals. We assessed the relationship between ICU admission lactate, maximal lactate and time-weighted lactate levels and hospital outcome in all patients and also in those patients whose lactate concentrations (admission $n = 3,964$, maximal $n = 2,511$, and time-weighted $n = 4,584$) were under 2 mmol.L^{-1} (i.e. relative hyperlactatemia).

Results: We obtained 172,723 lactate measurements. Higher admission and time-weighted lactate concentration within the reference range was independently associated with increased hospital mortality (admission odds ratio (OR) 2.1, 95% confidence interval (CI) 1.3 to 3.5, $P = 0.01$; time-weighted OR 3.7, 95% CI 1.9 to 7.00, $P < 0.0001$). This significant association was first detectable at lactate concentrations $> 0.75 \text{ mmol.L}^{-1}$. Furthermore, in patients whose lactate ever exceeded 2 mmol.L^{-1} , higher time-weighted lactate remained strongly associated with higher hospital mortality (OR 4.8, 95% CI 1.8 to 12.4, $P < 0.001$).

Conclusions: In critically ill patients, relative hyperlactatemia is independently associated with increased hospital mortality. Blood lactate concentrations $> 0.75 \text{ mmol.L}^{-1}$ can be used by clinicians to identify patients at higher risk of death. The current reference range for lactate in the critically ill may need to be re-assessed.

Introduction

In healthy individuals there is a continuous cycle of lactate production and metabolism, which ensures that blood lactate concentrations are normally low [1,2]. Higher blood lactate concentrations occur when lactate production exceeds clearance, when clearance capacity is decreased or more frequently when both occur simultaneously [3,4]. Elevated blood lactate concentrations above the accepted *normal* reference range (absolute hyperlactatemia) are common and associated with increased hospital mortality in the critically ill [5-12]. Their usefulness in identifying criti-

cally ill patients at higher risk of death has led to the adoption of lactate measurement in most blood gas analyzers and the frequent measurement of lactate in the critically ill.

While the normal lactate concentration in unstressed individuals is $1.0 \pm 0.5 \text{ mmol.L}^{-1}$ [1,2], patients with critical illness are considered to have normal lactate levels at concentrations of less than 2 mmol.L^{-1} [13]. Furthermore, this 2 mmol.L^{-1} cut off may be considered to be a conservative threshold as some have suggested that a level of up to 4 mmol.L^{-1} is within the normal limits [14].

However, it is unknown whether a higher blood lactate concentration within the current reference range (relative hyperlactatemia) might also be associated with increased hospital mortality. This knowledge would be clinically important because the currently used upper reference limit

* Correspondence: Alistair.Nichol@med.monash.edu.au

¹ Australian and New Zealand Intensive Care-Research Centre, School of Public Health and Preventive Medicine, Monash University, Alfred Hospital Campus, 75 Commercial Road, Prahran, VIC 31821, Australia

for lactatemia may fail to identify many patients who are at higher risk of death.

We hypothesized that higher blood lactate concentrations within the reference range would be associated with an increased risk of hospital death and investigated the relationship between ICU admission, maximal and time-weighted blood lactate concentrations and hospital mortality in a large cohort of critically ill patients.

Materials and methods

The data collection and the data analysis for this study are part of ongoing de-identified data auditing processes across the participating hospitals, which have all waived the need for informed consent. The Austin Hospital Ethics Committee approved the study.

Study population and data sources

We conducted this study as a four-centre retrospective investigation of a prospectively gathered intensive care database. Four Australian university teaching hospital intensive care units enrolled patients in this study. We included all patients admitted to these ICUs from January 2000 to October 2004.

The blood lactate concentration data used for this study were stored and retrieved electronically. We obtained age, sex, use of mechanical ventilation, reason for ICU admission, surgical and non-surgical divided into (trauma, cardiac/vascular, gastrointestinal tract, neurological and thoracic/respiratory diseases), and Acute Physiology and Chronic Health Evaluation (APACHE) II score [15] from the electronic data repositories of each ICU, using prospectively collected data as part of a continuing data collection by the Australian and New Zealand Intensive Care Society - Centre for Outcome and Resources Evaluation (ANZICS-CORE). We coded admission diagnosis by APACHE III system used by the ANZICS-CORE - Adult Patient Database [16].

All patients had initial arterial lactate and blood gas measured by blood gas analyser (Rapilab, Bayer Australia, Sydney, NSW, Australia, upper normal limit 2.00 mmol.L⁻¹) at the time of admission to the ICU. The timing of repeat measurements was at the discretion of the managing critical care team. All subsequent blood lactate measurements were performed using the same blood-gas analyzer in each hospital. A *normal* (within reference) lactate was defined as a concentration between 0.00 and 2.00 mmol.L⁻¹ [13]. Laboratories in the participating hospitals comply with standards of the National Association of Testing Authorities [17] and the Royal College of Pathologists of Australasia [18].

Statistical Analysis

We used the ICU admission (Lac_{ADM}) and maximal (Lac_{MAX}) blood lactate concentrations to indicate the admission and highest value recorded while in the ICU. We first

assessed blood lactate concentration in all patients and second, in those patients whose ICU admission (Lac_{ADM}), and maximal (Lac_{MAX}) blood lactate concentrations never exceeded the *normal* reference range (that is, < 2 mmol.L⁻¹). In addition, to avoid the potential effect of surveillance bias due to the increased blood lactate monitoring in more severely ill patients, we calculated the time-weighted lactate concentration (Lac_{TW}). This time-weighted method is more representative of the true lactate level during the ICU stay than the arithmetic mean, as it assumes a linear trend between each individual lactate measurement for each patient during their ICU stay. This method was modified from, and used in accordance with, an approach previously used by Finney et al to describe hyperglycaemia [19].

As the relationship between Lac_{ADM}, Lac_{MAX}, Lac_{TW} and mortality was expected not to be linear in nature, categorical variables were created. We divided lactate into four bands: *normal* (0.00 to 2.00 mmol.L⁻¹); mild hyperlactatemia (2.01 to 4.00 mmol.L⁻¹); moderate hyperlactatemia (4.01 to 6.00 mmol.L⁻¹) and severe hyperlactatemia (> 6.01 mmol.L⁻¹) for comparison.

The *normal* range of lactate (0.00 to 2.00 mmol.L⁻¹) was subsequently divided into eight bands. However, due to the small number of patients with values under < 0.75 mmol.L⁻¹ we combined the three lower octiles to achieve adequate size for statistical comparison. We therefore compared: the lower limit of normal (LLN, 0.00-0.75 mmol.L⁻¹); upper limit of normal (ULN, 1.76 to 2.00 mmol.L⁻¹) and four intermediate categories (0.75 to 1.00 mmol.L⁻¹); (1.01 to 1.25 mmol.L⁻¹); (1.26 to 1.50 mmol.L⁻¹); (1.51 to 1.75 mmol.L⁻¹).

To confirm that any association between Lac_{TW} levels within the normal range and mortality was not being biased by patients who had individual lactate concentrations above 2 mmol.L⁻¹ while in the ICU, we then examined the association between Lac_{TW} and mortality in the cohort of patients whose lactate never exceeded 2 mmol.L⁻¹.

The primary outcome for analysis was hospital mortality and the secondary outcome was ICU mortality. We performed crude univariate analysis with lactate as a categorical variable for comparison between groups according to hospital survival status using chi-square test for proportions, Student t-test for normally distributed outcomes and Wilcoxon rank sum tests otherwise. In addition, we performed multivariate analysis where we adjusted for all available predictors of hospital mortality included in the models (gender, age, APACHE II, mechanical ventilation, surgical admission and diagnosis type) determined by backward elimination of non-significant variables. Furthermore, to determine if the lactate associations were consistent across patient admission diagnosis subgroups and study hospitals, we examined the interactions between measures of lactate

and other variables in the model. We report results from the multivariate models using odds ratios, OR (95% confidence intervals, 95% CI).

All analyses were performed using SAS version 9.2 (SAS Institute Inc, Cary, NC, USA). A two-sided *P*-value of 0.05 was considered to be statistically significant.

Results

We studied a heterogeneous cohort of 7,155 critically ill patients with 172,723 blood lactate measurements (Table 1). The absolute blood lactate concentrations (admission lactate Lac_{ADM} , maximal lactate Lac_{MAX} and time-weighted lactate Lac_{TW}), were significantly higher in non-survivors compared to survivors (Table 1).

Overall assessment of hyperlactatemia (absolute hyperlactatemia)

A higher crude Lac_{ADM} , Lac_{MAX} and Lac_{TW} concentration above the reference range (0.00 to 2.00 mmol.L⁻¹) was associated with a higher hospital and ICU mortality rate (Figure 1, Panel a, b, c, respectively). Multivariate analysis showed that compared to the current reference lactate concentration (0.00 to 2.00 mmol.L⁻¹) a higher Lac_{ADM} (> 8 mmol.L⁻¹), Lac_{MAX} (> 10 mmol.L⁻¹) and Lac_{TW} (> 6 mmol.L⁻¹) blood lactate concentration was strongly associated with an increased adjusted hospital mortality (Lac_{ADM} OR213.49 (95% CI 28.69 to 1588.71), *P* < 0.0001); Lac_{MAX} OR8.44 (95% CI 5.99 to 11.91), *P* < 0.0001) Lac_{TW} OR 37.78 (95% CI 18.72 to 76.25), *P* < 0.0001). This association between lactate (Lac_{ADM} , Lac_{MAX} and Lac_{TW}) and adjusted mortality was independent of admission diagnosis, admission hospital and APACHE II score.

Assessment of relative hyperlactatemia

We further identified the cohorts of patients with a Lac_{ADM} (n = 3,964), Lac_{MAX} , (n = 2,511) and with Lac_{TW} (n = 4,584) within the current reference range (0.00 to 2.00 mmol.L⁻¹). Table 2 shows the clinical characteristics of the Lac_{ADM} subgroup of patients divided into hospital survivors and non-survivors. Patients with an admission or time weighted lactate level just below 2 mmol.L⁻¹ had a crude hospital mortality rate of approximately 20% (Figures 2a and 3b). Lac_{ADM} , Lac_{MAX} and Lac_{TW} were significantly higher in hospital non-survivors compared to survivors (Table 2).

A higher admission lactate (Lac_{ADM}) concentration within the reference range was associated with higher crude hospital mortality (Figure 2a), with a mortality rate of 18.5% in the higher risk cohort. There also was a significant independent relationship between Lac_{ADM} within the reference range and adjusted hospital mortality (Figure 2b). Higher Lac_{TW} within the reference range was independently

associated with higher adjusted hospital mortality (Figure 3b) with a crude mortality rate of 21.1% in the higher risk cohort (Figure 3a). In addition, higher Lac_{TW} (1.5 to 2.00 mmol.L⁻¹ vs 0.00 to 0.75 mmol.L⁻¹) was also independently associated with hospital mortality in the cohort of patients whose lactate never exceeded 2 mmol.L⁻¹ (Lac_{TW} OR4.8, 95% CI 1.8 to 12.4, *P* < 0.001, n = 2,254).

The association between adjusted hospital mortality and Lac_{ADM} and Lac_{TW} lactate concentrations within the normal range was first detected at lactate concentrations over 0.75 mmol.L⁻¹ and the strength of this association increased with higher lactate concentrations within the reference range (Figures 2b and 3b). The detected association between lactate within the reference range and adjusted hospital mortality was independent of admission diagnosis, admission hospital and APACHE II score. Interestingly, a higher crude and adjusted maximal lactate (Lac_{MAX}) concentration within the *normal* reference range was not independently associated with increased hospital mortality (data not shown).

Discussion

Statement of key findings

We tested whether higher levels of lactatemia within the current reference range (relative hyperlactatemia) are independently associated with an increased risk of hospital mortality. We found that most patients admitted to ICU had an admission or time weighted lactate level within the current normal reference range and yet a crude hospital mortality rate of approximately 20%. We also found that higher ICU admission (Lac_{ADM}) and time weighted (Lac_{TW}) blood lactate concentrations within the *normal* reference range were strongly and independently associated with hospital mortality. In addition, this increased mortality risk was first detected at lactate concentrations above 0.75 mmol.L⁻¹.

Comparison with previous studies

Many studies have found that either Lac_{ADM} or Lac_{MAX} above the reference range are associated with higher mortality following cardiothoracic surgery [12], trauma [7], major abdominal surgery [5], high risk surgery, major vascular trauma, sepsis [20], liver disease [21], in ventilated neonates [22] and critically ill children [11]. Our observations that the extent of absolute hyperlactatemia is strongly linked with mortality independent of admission diagnostic group in a large mixed cohort of critically ill patients confirm that lactate is a useful marker in the intensive care setting to identify patients at high risk of death. In addition, these findings suggest that other observations related to lactate obtained from our cohort might also be generalizable. In addition, we found that time weighted lactate (Lac_{TW}), a representation of the lactate concentration throughout the ICU stay, was strongly associated with increasing hospital

Table 1: Clinical characteristics of hospital survivors and non-survivors

	n	Hospital Non-survivors	n	Hospital Survivors	P-value
Male Sex	1,561	57.3% (894)	5,590	60.2% (3,365)	0.035
APACHE II score	1,250	24.6 (8.1)	4,845	15.1 (6.6)	< 0.0001
Age (yr)	1,428	65.8 (16.6)	5,181	59.7 (18.9)	< 0.0001
Number on mechanical ventilation	1,434	81.2% (1164)	5,515	55.6% (3,066)	< 0.0001
Surgical patients	1,565	28.4% (444)	5,590	48.7% (2,722)	< 0.0001
Diagnosis at admission					
Cardiac and vascular	1,565	26% (407)	5,590	21.6% (1,207)	0.0003
Thoracic and respiratory	1,565	18.5% (290)	5,590	18.9% (1,057)	0.69
Trauma	1,565	2.2% (34)	5,590	7.9% (442)	< 0.0001
Neurological	1,565	14.1% (221)	5,590	10.9% (609)	0.0004
Gastrointestinal tract diseases	1,565	14.1% (221)	5,590	22.9% (1,280)	< 0.0001
Other	1,565	25% (391)	5,590	17.7% (989)	< 0.0001
ICU stay (days)	1,559	3.0 (1.5 to 6.6)	5,589	2.5 (1.6 to 4.9)	< 0.0001
Hospital stay (days)	1,312	9 (3 to 24)	5,131	14 (8 to 29)	< 0.0001
Admission blood lactate (mmol.L⁻¹)	1,395	2.3 (1.4 to 4.4)	5,037	1.5 (1.0 to 2.4)	< 0.0001
Time-weighted blood lactate (mmol.L⁻¹)	1,411	2.0 (1.4 to 3.3)	4,977	1.3 (1.0 to 1.8)	< 0.0001
Max blood lactate (mmol.L⁻¹)	1,565	4.0 (2.2 to 7.5)	5,590	2.1 (1.4 to 3.3)	< 0.0001

Data are expressed as, percentage (number), (standard deviation) or median (interquartile range).
 APACHE II, Acute Physiology and Chronic Health Evaluation II.

mortality. The finding that the duration of this derangement while in the ICU is associated with increased mortality expands previous work demonstrating that periods of sustained hyperlactataemia (that is, ongoing excess production or decreased clearance of lactate) is associated with an increased risk of death [3,5,23-28].

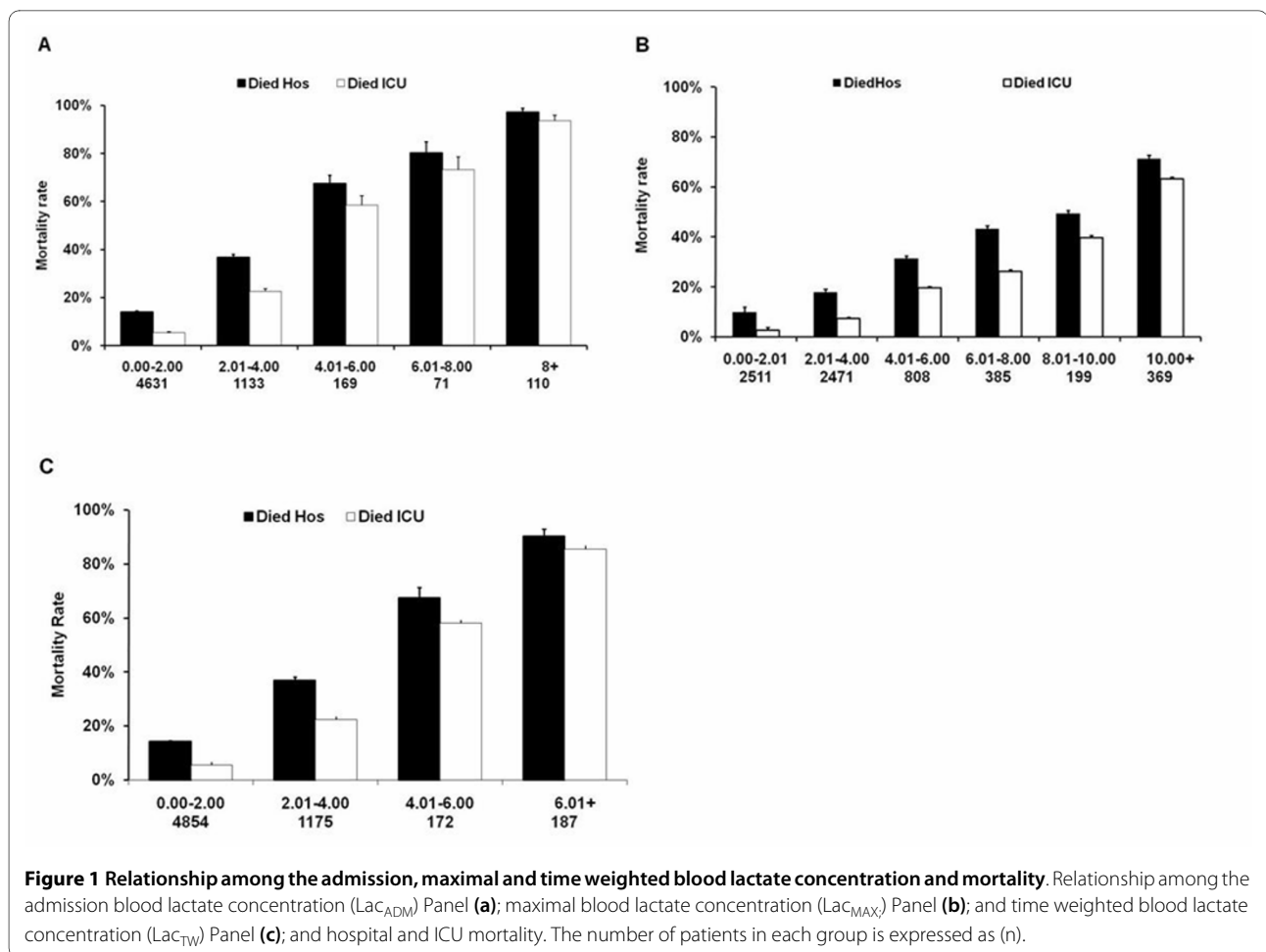
To our knowledge, this is the first study to assess the relationship of higher lactate concentrations within the current reference range and mortality. We found a strong association between an increased Lac_{ADM} and Lac_{TW} within the current reference range and increased hospital mortality. Furthermore, we demonstrated that higher Lac_{TW} in the cohort of patients whose lactate ever exceeded 2 mmol.L⁻¹ was also strongly associated with higher hospital mortality. These results suggest that relative hyperlactaemia may be useful in identifying critically ill patients at high risk of death. Furthermore, we have demonstrated that the higher mortality associated with higher lactate levels (Lac_{ADM} and Lac_{TW}) within the normal reference range is detectable at all concentrations > 0.75 mmol.L⁻¹ compared to 0.00 to

0.75 mmol.L⁻¹. In their aggregate, these results suggest that the transition from *physiological* to *pathological* lactatemia occurs at a concentration well below 2.00 mmol.L⁻¹ and that an elevated Lac_{ADM} and/or Lac_{TW} > 0.75 mmol.L⁻¹ identifies critically ill patients at higher risk of death.

Implications for clinicians

These findings expand our understanding of lactate as a clinical biomarker in the ICU. Relatively small changes in lactate homeostasis as detected by higher blood concentrations within the reference range may reflect important otherwise undetected physiological changes, which may reflect widespread metabolic stress [29] and increased use of lactate as a fuel source [30].

A higher time weighted lactate (Lac_{TW}) below 2 mmol.L⁻¹, the cohort of patients whose lactate ever exceeded 2 mmol.L⁻¹, was also strongly associated with increased hospital mortality. This finding extends our understanding of the reference range by emphasizing the role of the duration of lactate derangement in predicting increased risk of death



[3,5,23-25,28,31,32]. Furthermore, it highlights the clinical importance of persistently higher lactate concentrations. This notion may explain why Lac_{TW} (which reflects the extent and duration of the derangement) but not Lac_{MAX} (which only reflects its momentary extent) predicted mortality within the reference range.

Our results suggest that ICU clinicians confronted with a patient with a Lac_{ADM} or Lac_{TW} (persistently higher lactate) over 0.75 mmol.L⁻¹ should look for any remediable causes of physiological stress and appreciate that these patients are at increased risk of an adverse outcome.

Strengths and limitations of the study

The strengths of our study include the fact that it is the largest investigation of lactatemia in a general multicenter cohort of patients, thus carrying a higher degree of external validity. It used data from > 170,000 measurements obtained with state-of-the-art technology, thus increasing their accuracy and reproducibility. It used robust and clinically relevant outcomes. It is the first to study the independent relationship between relative hyperlactatemia and outcome and identified clinically relevant findings. Limita-

tions of the study include the fact that it is retrospective in design and thus potentially subject to systematic error and bias. However, all the clinical and electronic data utilised were collected prospectively in a large number of consecutive critically ill patients in four ICUs. The data are numerical in nature and were measured independently; thus they were not amenable to selection bias or unintended manipulation. A number of common ICU therapeutic interventions such as epinephrine [33], metformin [34], nucleoside analogues in HIV [35], high-volume hemofiltration (HVHF) with lactate-buffered replacement fluids [36] can all affect lactate levels and we did not have information on their use. We were therefore unable to include these in our multivariate analyses. However, the size of our study and the strength of the association between Lac_{ADM} and Lac_{TW} and mortality within the reference range independent of admission diagnosis and hospital suggest that these factors are not likely to have confounded the signal in this study. Despite this, clinicians should be aware of the potential of these iatrogenic causes of relative or absolute hyperlactataemia. Due to the smaller numbers of patients in the cohort with Lac_{ADM} and Lac_{TW} in the lowest three octiles, we com-

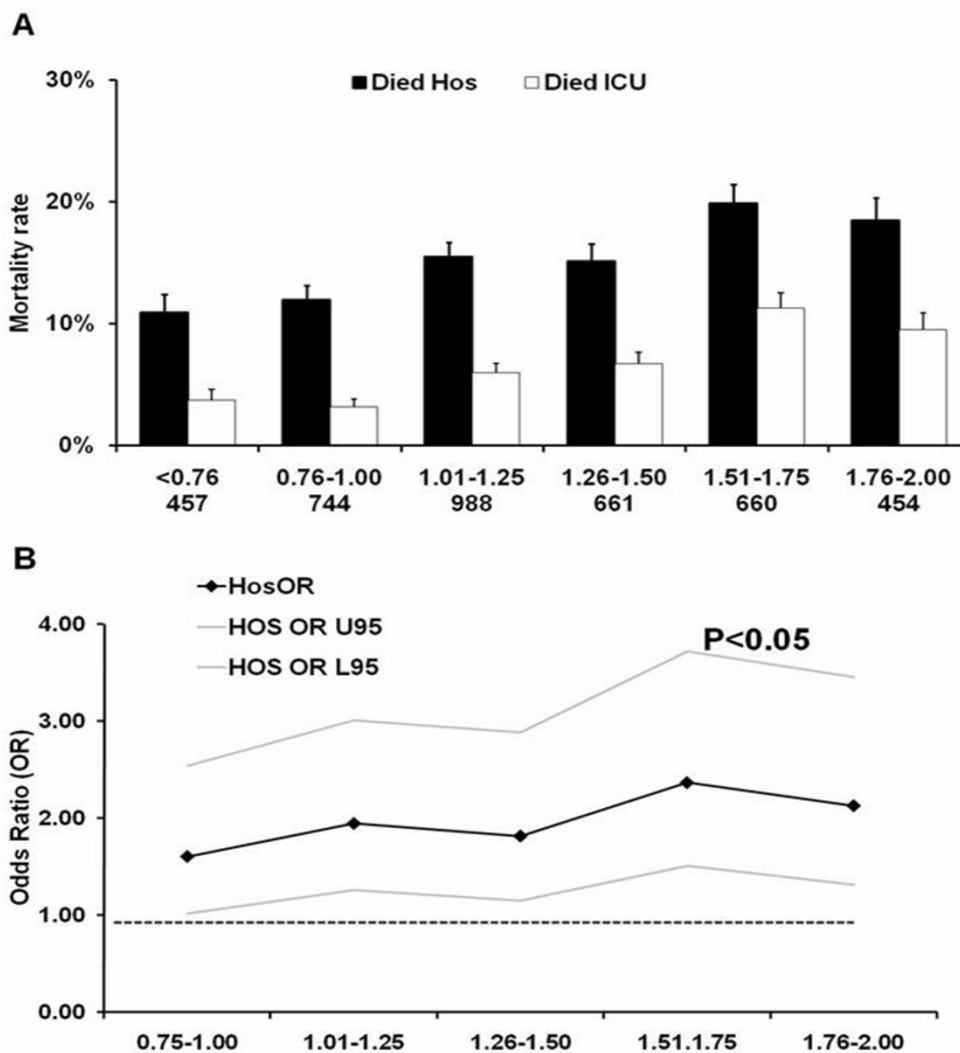


Figure 2 Relationship between the admission blood lactate concentration within the normal range and mortality rate. Relationship between the admission blood lactate (LaC_{ADM}) concentration within the normal range and ICU and hospital mortality rate (Panel (a)). The number of patients in each group is expressed as (n). Panel (b) displays the result (adjusted odds ratios (OR) with 95% Confidence Interval (CI) of a multivariate analysis assessing the association between admission blood lactate (LaC_{ADM}) within the normal range and hospital mortality. (All ORs in the multivariate analysis are compared to the 0.00 to 0.75mmol.L⁻¹ group with the horizontal line representing an OR of 1.0).

pressed these octiles into a single group (0.00 to 0.75 mmol.L⁻¹) to provide sufficient numbers for statistical analyses. This compression limited our ability to determine if higher blood lactate concentrations below 0.75 mmol.L⁻¹ may also be associated with increasing mortality.

Future research

Our findings are novel and need to be confirmed by similar studies in other countries or patient populations before they can be considered to reflect a general biological principle. Such studies should ideally be performed prospectively with a simultaneous collection of information on interven-

tions, which may affect lactate by dilution (intravenous fluids) or by changing its metabolism (drugs) and these studies should ideally also include non-ICU cohorts of patients (that is, Emergency Department patients). If these studies confirm the value of relative hyperlactatemia, the reference value for lactate in critically ill patients may require adjustment.

Conclusions

In conclusion, higher LaC_{ADM} and LaC_{TW} blood lactate concentrations within the current reference range are associated with greater hospital mortality. These results suggest that

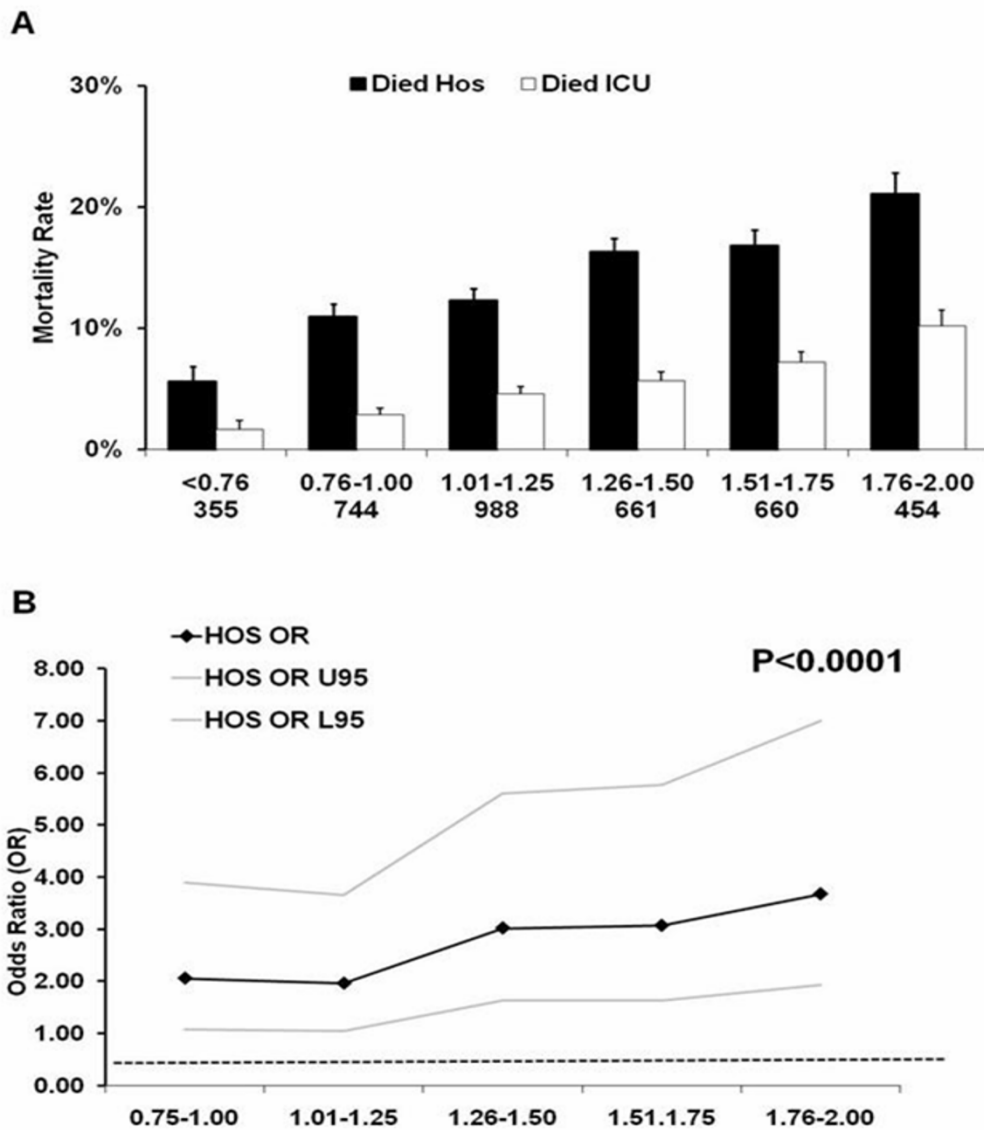


Figure 3 Relationship between time-weighted blood lactate concentration within the normal range and mortality rate. Relationship between time-weighted blood lactate (Lac_{TW}) concentration within the reference range and ICU and hospital mortality rate (Panel (a)). The number of patients in each group is expressed as (n). Panel (b) displays the result (adjusted odds ratios (OR) with 95% Confidence Interval (CI)) of a multivariate analysis assessing the association between time-weighted blood lactate concentration (Lac_{TW}) within the normal range and hospital mortality. Abbreviations: OR U95; odds ratio upper 95% CI; OR L95, odds ratios lower 95% CI. (All ORs in the multivariate analysis are compared to 0.00 to 0.75 mmol.L⁻¹ group with the horizontal line representing an OR of 1.0).

even relative hyperlactaemia is a useful biomarker in critical illness. They also suggest that the upper level of the reference value for lactate in critically ill patients may require readjustment. Finally, they imply that clinicians should be especially alert in all patients with admission and/or persistent blood lactate concentrations within the current upper limit of the reference range.

Key messages

- Blood lactate concentration is increasingly being measured in the critically ill.
- Higher intensive care unit blood lactate concentrations above the current normal range (absolute hyperlactatemia) are associated with increased hospital mortality.
- Higher intensive care unit admission blood lactate concentrations within the current normal range (relative

Table 2: Clinical characteristics for hospital survivors and non-survivors in patients with admission blood lactate concentration within the reference range

	n	Hospital Non-survivors	n	Hospital Survivors	P-value
Male Sex	607	58.2% (353)	3,357	59% (1,981)	0.71
APACHE II score	485	22.1 (7.3)	2,891	14.2 (6.2)	< 0.0001
Age (yr)	556	66.0 (16.5)	3,090	60.7 (18.7)	< 0.0001
Number on mechanical ventilation	551	77.3% (426)	3,313	48.7% (1,613)	< 0.0001
Surgical patients	607	31% (188)	3,357	50.9% (1,709)	< 0.0001
Diagnosis at admission					
Cardiac and vascular	607	15.2% (92)	3,357	20.4% (685)	0.003
Thoracic and respiratory	607	24.2% (147)	3,357	20% (671)	0.017
Trauma	607	3.6% (22)	3,357	8.8% (295)	< 0.0001
Neurological	607	18.1% (110)	3,357	10.9% (366)	< 0.0001
Gastrointestinal tract diseases	607	15.3% (93)	3,357	23.7% (796)	< 0.0001
Other	607	23.6% (143)	3,357	16.2% (544)	< 0.0001
ICU stay (days)	606	3.0 (2.0 to 8.0)	3,357	2.0 (1.3 to 4.0)	< 0.0001
Hospital stay (days)	501	12.9 (5.2 to 30.2)	3,064	13.0 (7.9 to 26.7)	0.041
Admission blood lactate (mmol.L-1)	607	1.3 (1 to 1.6)	3,357	1.2 (0.9 to 1.5)	< 0.0001
Time-weighted blood lactate (mmol.L-1)	599	1.4 (1.1 to 1.9)	3,212	1.20 (1.0 to 1.5)	< 0.0001
Max blood lactate (mmol.L-1)	607	2.4 (1.6 to 4.1)	3,357	1.7 (1.3 to 2.4)	< 0.0001

Data are expressed as, percentage (number), (standard deviation) or median (interquartile range) APACHE II, Acute Physiology and Chronic Health Evaluation II.

hyperlactatemia) are associated with increased hospital mortality.

- Higher time weighted intensive care unit blood lactate concentrations within the current *normal* range (relative hyperlactatemia) are associated with increased hospital mortality.
- Higher blood lactate concentrations within the current normal range can be used to identify patients at high risk of death; possibly suggesting that we need to revise the current definition of normal blood lactate concentration in the critically ill.

Abbreviations

ANZICS-APD: Australian and New Zealand Intensive Care Society - Adult Patient Database; ANZICS-CORE: Australian and New Zealand Intensive Care Society - Centre for Outcome and Resources Evaluation; APACHE: Acute Physiological and Chronic Health Evaluation; LLN: lower limit of normal; Lac_{ADM}: admission lactate; Lac_{MAX}: maximal lactate; Lac_{TW}: time-weighted lactate; OR: odds ratio; ULN: upper limit of normal.

Competing interests

The authors declare that they have no competing interests.

Authors' contributions

AN, RB, VP, GH, D JC, MB and ES carried out the database searches, participated in the data collation and drafted the manuscript with AD, CF, ES, MR. AN, RB, VP,

DJC, MB conceived of the study, and participated in its design and coordination and helped to draft the manuscript. All authors read and approved the final manuscript.

Acknowledgements

No financial support was received for the collation of this article.

Author Details

¹Australian and New Zealand Intensive Care-Research Centre, School of Public Health and Preventive Medicine, Monash University, Alfred Hospital Campus, 75 Commercial Road, Prahran, VIC 31821, Australia, ²Department of Anaesthesiology and Resuscitology, 2-5-1 Shikata-cho, Okayama, 700-8558, Japan, ³Department of Intensive Care, The Alfred Hospital, 75 Commercial Road, Prahran, VIC 31821, Australia, ⁴Department of Intensive Care, The Austin Hospital, 145 Studley Road, Heidelberg, VIC 3084, Australia, ⁵Department of Intensive Care, The Western Hospital, 148 Gordon Street, Footscray, VIC 3011, Australia and ⁶Department of Intensive Care, Westmead Hospital, Darcy Road & Hawksebury Road, Westmead, Sydney, NSW 2145, Australia

Received: 25 January 2010 Accepted: 24 February 2010

Published: 24 February 2010

References

1. De Backer D: **Lactic acidosis.** *Intensive Care Med* 2003, **29**:699-702.
2. De Backer D: **Lactic acidosis.** *Minerva Anestesiol* 2003, **69**:281-284.
3. Manikis P, Jankowski S, Zhang H, Kahn RJ, Vincent JL: **Correlation of serial blood lactate levels to organ failure and mortality after trauma.** *Am J Emerg Med* 1995, **13**:619-622.

4. Vincent JL, Dufaye P, Berre J, Leeman M, Degaute JP, Kahn RJ: **Serial lactate determinations during circulatory shock.** *Crit Care Med* 1983, **11**:449-451.
5. Husain FA, Martin MJ, Mullenix PS, Steele SR, Elliott DC: **Serum lactate and base deficit as predictors of mortality and morbidity.** *Am J Surg* 2003, **185**:485-491.
6. Basaran M, Sever K, Kafali E, Ugurlucan M, Sayin OA, Tansel T, Alpagut U, Dayioglu E, Onursal E: **Serum lactate level has prognostic significance after pediatric cardiac surgery.** *J Cardiothorac Vasc Anesth* 2006, **20**:43-47.
7. Cerovic O, Golubovic V, Spec-Marn A, Kremzar B, Vidmar G: **Relationship between injury severity and lactate levels in severely injured patients.** *Intensive Care Med* 2003, **29**:1300-1305.
8. Jansen TC, van Bommel J, Woodward R, Mulder PG, Bakker J: **Association between blood lactate levels, Sequential Organ Failure Assessment subscores, and 28-day mortality during early and late intensive care unit stay: a retrospective observational study.** *Crit Care Med* 2009, **37**:2369-2374.
9. Khosravani H, Shahpori R, Stelfox HT, Kirkpatrick AW, Laupland KB: **Occurrence and adverse effect on outcome of hyperlactatemia in the critically ill.** *Crit Care* 2009, **13**:R90.
10. Jansen TC, van Bommel J, Mulder PG, Rommes JH, Schievelde SJ, Bakker J: **The prognostic value of blood lactate levels relative to that of vital signs in the pre-hospital setting: a pilot study.** *Crit Care* 2008, **12**:R160.
11. Koliski A, Cat I, Giraldi DJ, Cat ML: **[Blood lactate concentration as prognostic marker in critically ill children].** *J Pediatr (Rio J)* 2005, **81**:287-292.
12. Toraman F, Evrenkaya S, Yuce M, Aksoy N, Karabulut H, Bozkulak Y, Alhan C: **Lactic acidosis after cardiac surgery is associated with adverse outcome.** *Heart Surg Forum* 2004, **7**:E155-159.
13. Mizock BA: **Lactic acidosis.** *Dis Mon* 1989, **35**:233-300.
14. Rivers E, Nguyen B, Havstad S, Ressler J, Muzzin A, Knoblich B, Peterson E, Tomlanovich M: **Early goal-directed therapy in the treatment of severe sepsis and septic shock.** *N Engl J Med* 2001, **345**:1368-1377.
15. Knaus WA, Draper EA, Wagner DP, Zimmerman JE: **APACHE II: a severity of disease classification system.** *Crit Care Med* 1985, **13**:818-829.
16. ANZICS AaZICS: **Modified APACHE III admission diagnosis.** [<http://www.anzics.com.au>].
17. **National Association of Testing Authorities** [<http://www.nata.asn.au>]
18. **RCPA Manual.** In *The Royal College of Pathologists of Australasia Fifth edition.* The Royal College of Pathologists of Australasia Sydney; 2009.
19. Finney SJ, Zekveld C, Elia A, Evans TW: **Glucose control and mortality in critically ill patients.** *Jama* 2003, **290**:2041-2047.
20. Park M, Azevedo LC, Maciel AT, Pizzo VR, Noritomi DT, da Cruz Neto LM: **Evolution of standard base excess and serum lactate level in severe sepsis and septic shock patients resuscitated with early goal-directed therapy: still outcome markers?** *Clinics* 2006, **61**:47-52.
21. Kruse JA, Zaidi SA, Carlson RW: **Significance of blood lactate levels in critically ill patients with liver disease.** *Am J Med* 1987, **83**:77-82.
22. Deshpande SA, Platt MP: **Association between blood lactate and acid-base status and mortality in ventilated babies.** *Arch Dis Child Fetal Neonatal Ed* 1997, **76**:F15-20.
23. Abramson D, Scalea TM, Hitchcock R, Trooskin SZ, Henry SM, Greenspan J: **Lactate clearance and survival following injury.** *J Trauma* 1993, **35**:584-588. discussion 588-589.
24. McNelis J, Marini CP, Jurkiewicz A, Szomstein S, Simms HH, Ritter G, Nathan IM: **Prolonged lactate clearance is associated with increased mortality in the surgical intensive care unit.** *Am J Surg* 2001, **182**:481-485.
25. Kalyanaraman M, DeCampi WM, Campbell AI, Bhalala U, Harmon TG, Sandiford P, McMahon CK, Shore S, Yeh TS: **Serial blood lactate levels as a predictor of mortality in children after cardiopulmonary bypass surgery.** *Pediatr Crit Care Med* 2008, **9**:285-288.
26. Jansen TC, van Bommel J, Mulder PG, Lima AP, Hoven B van der, Rommes JH, Snellen FT, Bakker J: **Prognostic value of blood lactate levels: does the clinical diagnosis at admission matter?** *J Trauma* 2009, **66**:377-385.
27. Levraut J, Ichai C, Petit I, Ciebiera JP, Perus O, Grimaud D: **Low exogenous lactate clearance as an early predictor of mortality in normolactatemic critically ill septic patients.** *Crit Care Med* 2003, **31**:705-710.
28. Yang CS, Qiu HB, Huang YZ, Xie JF, Mo M, Liu SQ, Yang Y: **[Prospective research on the prognosis of septic shock based on the change of lactate concentration in arterial blood].** *Zhonghua Wai Ke Za Zhi* 2009, **47**:685-688.
29. Gladden LB: **Lactate metabolism: a new paradigm for the third millennium.** *J Physiol* 2004, **558**:5-30.
30. Leverve XM: **Lactate in the intensive care unit: pyromaniac, sentinel or fireman?** *Crit Care* 2005, **9**:622-623.
31. Bakker J, Gris P, Coffernils M, Kahn R, Vincent J: **Serial blood lactate levels can predict the development of multiple organ failure following septic shock.** *Am J Surg* 1996, **171**:221-226.
32. Cardinal Fernandez PA, Olano E, Acosta C, Bertullo H, Albornoz H, Bagnulo H: **Prognostic value of lactate clearance in the first 6 hours of intensive medicine course.** *Med Intensiva* 2009, **33**:166-170.
33. Myburgh JA, Higgins A, Jovanovska A, Lipman J, Ramakrishnan N, Santamaria J: **A comparison of epinephrine and norepinephrine in critically ill patients.** *Intensive Care Med* 2008.
34. Chang CT, Chen YC, Fang JT, Huang CC: **Metformin-associated lactic acidosis: case reports and literature review.** *J Nephrol* 2002, **15**:398-402.
35. Falco V, Crespo M, Ribera E: **Lactic acidosis related to nucleoside therapy in HIV-infected patients.** *Expert Opin Pharmacother* 2003, **4**:1321-1329.
36. Cole L, Bellomo R, Baldwin I, Hayhoe M, Ronco C: **The impact of lactate-buffered high-volume hemofiltration on acid-base balance.** *Intensive Care Med* 2003, **29**:1113-1120.

doi: 10.1186/cc8888

Cite this article as: Nichol *et al.*, Relative hyperlactatemia and hospital mortality in critically ill patients: a retrospective multi-centre study *Critical Care* 2010, **14**:R25