

Commentary

The stressed synovium

Georg Schett*, Makiyeh Tohidast-Akrad†, Günter Steiner** and Josef Smolen**†

*Department of Internal Medicine III, University of Vienna, Austria

†Ludwig Boltzmann Institute for Rheumatology and Balneology, Vienna, Austria.

Correspondence: Georg Schett, MD, Division of Rheumatology, Department of Internal Medicine III, University of Vienna, Währinger Gürtel 18–20, A-1180 Vienna, Austria. Tel: +43 1 40400 4300; fax: +43 1 40400 4306, e-mail: georg.schett@akh-wien.ac.at

Received: 25 October 2000

Revisions requested: 13 November 2000

Revisions received: 16 November 2000

Accepted: 7 December 2000

Published: 9 January 2001

Arthritis Res 2001, **3**:80–86

© 2001 BioMed Central Ltd
(Print ISSN 1465-9905; Online ISSN 1465-9913)

Abstract

This review focuses on the mechanisms of stress response in the synovial tissue of rheumatoid arthritis. The major stress factors, such as heat stress, shear stress, proinflammatory cytokines and oxidative stress, are discussed and reviewed, focusing on their potential to induce a stress response in the synovial tissue. Several pathways of stress signalling molecules are found to be activated in the synovial membrane of rheumatoid arthritis; of these the most important examples are heat shock proteins, mitogen-activated protein kinases, stress-activated protein kinases and molecules involved in the oxidative stress pathways. The expression of these pathways *in vitro* and *in vivo* as well as the consequences of stress signalling in the rheumatoid synovium are discussed. Stress signalling is part of a cellular response to potentially harmful stimuli and thus is essentially involved in the process of synovitis. Stress signalling pathways are therefore new and promising targets of future anti-rheumatic therapies.

Keywords: heat shock proteins, rheumatoid arthritis, stress, stress-activated protein kinases

Introduction

Patients with rheumatoid arthritis (RA) are confronted with a multitude of stressful events during the course of their disease. Flares of disease activity with joint pain, swelling and stiffness, progressive damage and subsequent loss of function are hallmarks of RA. These features of chronic inflammation and destruction lead to a harassed and stressed rather than a relaxed life for the patients and their joints. At the microscopic and molecular level of disease, this 'stressful life' must have its counterparts. Understanding the cellular integration of stressful stimuli is of increasing importance and ought to be undertaken in these days of molecular medicine, because it might constitute at least part of the underlying pathogenetic events and thus permit new insights.

Mechanical stress

Under normal physiological conditions the synovial space is one of the most heavily pressured areas in the body. In diseases such as inflammatory arthritis the local conditions can deteriorate. Several classical stress factors are present in the synovial cavity and these stimuli are likely to influence the function of the cells in the synovial membrane. As in the walls of blood vessels, the synovial cavity is exposed to a high degree of mechanical stress under both normal and pathological conditions. Besides mechanical stress due to the load of body weight, which affects predominantly the joint cartilage, mechanical stress following shear forces is also present. In particular the motion of the synovial fluid during exercise induces shear forces whose biophysics has been studied in detail [1,2].

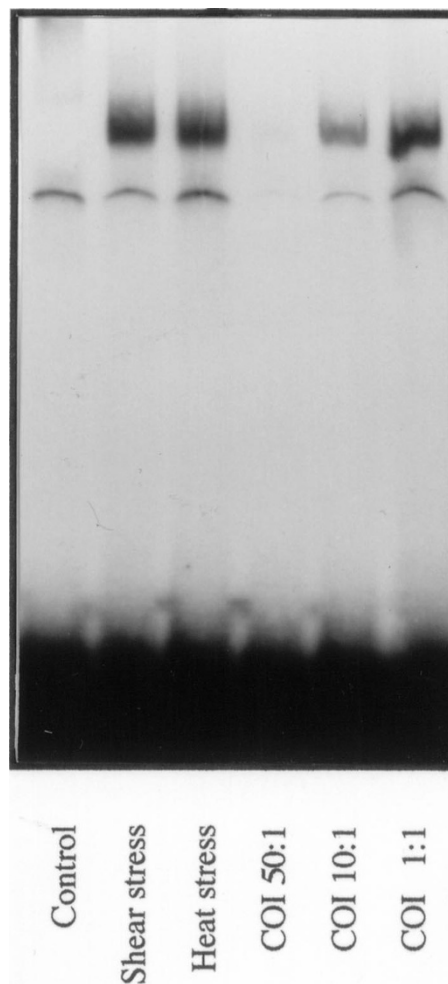
However, because cells can transduce mechanical stress into biochemical signals, numerous cellular functions can be influenced by the presence of mechanical stress.

The biochemical effects of shear stress on the synovial membrane were not studied in detail until recently, and the signal transduction pathways, which are activated, are largely unknown. Mechanical stress has been demonstrated to induce synovial hyperplasia, suggesting the initiation of cellular stimuli of growth and mitogenesis [3]. Indeed, cardiovascular research has demonstrated various effects of mechanical stress on the vessel wall leading to the activation of endothelial cells and to the proliferation of smooth muscle cells [4,5]. Shear forces induce signal transduction via mitogen-activated protein kinases (MAPKs) in these cells by membrane perturbation and the subsequent activation of Ras and Rac G-proteins [6]. By activating the MAPK pathways, mechanical stress gains access to *c-jun/c-fos* transcription factor activation, which is a central step of cellular activation in several different cell types [7]. Besides MAPKs, mechanical stress also influences other signalling systems, which are activated in the synovial membrane of RA [8]. Nuclear factor (NF)- κ B, for example, is one of them and also heat shock proteins (HSPs) 60 and 70 are regulated by shear stress [9,10]. Interestingly, recent data from our laboratory have shown that shear stress induces a complete response of the heat shock factor (HSF)-1/HSP70 pathway in synovial fibroblasts by inducing DNA binding of HSF-1 (Fig. 1) and the subsequent overexpression of HSP70 [11]. Especially in the synovial-lining layer, where the cells are directly exposed to shear stress, HSP expression can resemble a defence strategy of the cells to survive. Shear forces, although certainly present in normal joints, can vary greatly and directly depending on the quantity and quality of exercise that the person performs. In addition, synovial proliferation and cartilage destruction during arthritis are likely to be factors affecting the intensity of the shear forces present in the joint.

Heat stress and heat shock protein

Heat is another physical stress factor present in the inflamed synovial membrane. Flares of disease activity based on an increased inflammatory activity lead to hyperaemia and the release of pyrogenic substances. Thus, hyperthermia is a frequent and long-known symptom of arthritis. Heat stress can induce matrix metalloproteinases [12], for example, which participate in tissue destruction during RA. Transduction of heat to biochemical signals has been studied for several decades and the heat shock response of cells has become a favored topic during recent years [13,14]. HSFs were discovered as signal transducers of heat stress and HSPs as the effector molecules that allow cellular adaptation to heat [15]. The function of HSPs is to protect the folding of nascent proteins, the refolding of denatured

Figure 1



Activation of synovial fibroblast-like cells by heat shock factor. Gel mobility-shift assay of heat shock factor (HSF)-1 DNA binding in human synovial fibroblast-like cells. HSF-1/DNA complexes are not present in unstimulated cells (control), whereas shear stress, and also heat stress, lead to a strong increase in the DNA-binding activity of HSF-1. Specific binding can be blocked by an excess of unlabelled oligonucleotide; unlabelled oligonucleotide inhibition (COI) is the ratio of unlabelled to labelled oligonucleotide (50:1, 10:1 and 1:1).

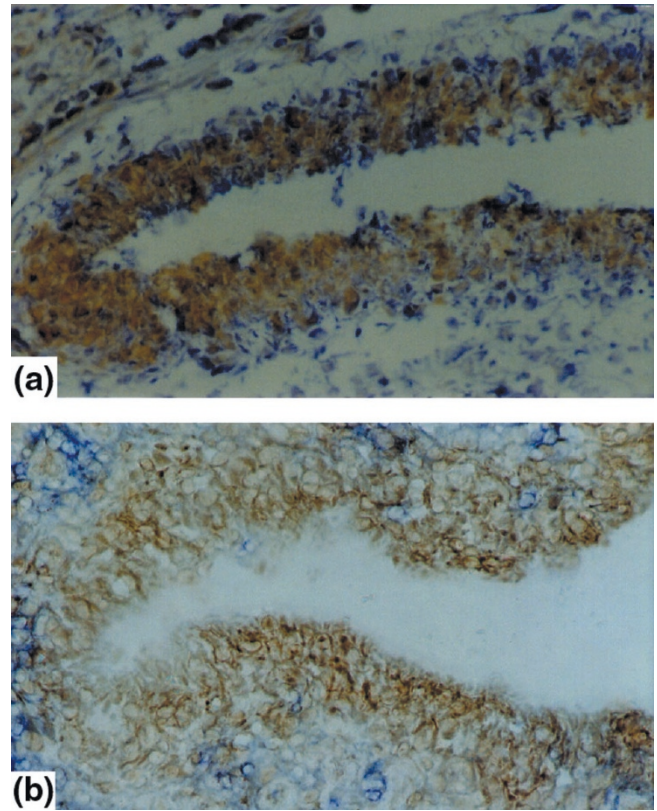
proteins and the solubilization of protein aggregates especially under conditions of heat stress [16]. Several multimember families of HSPs have been discovered and are characterized by their molecular mass and intracellular localization. Although heat is the most typical inducer of HSPs, other stress factors such as shear stress [17], oxidative stress [18] and proinflammatory cytokines [19] can also induce certain types of HSP. In comparison with the large number of investigations on autoimmunity against HSPs in RA [20], studies on the expression of HSPs in the synovial membrane and on the factors leading to synovial HSP expression have been rare.

HSP60 is the human homologue of mycobacterial HSP65, and the cellular and humoral autoimmune responses to both isoforms have been studied for many years in RA [21,22]. HSP60 is expressed in the synovial membrane of patients with RA [23] and juvenile RA [24]; however, the synovial tissues of normal and osteoarthritis patients also express a considerable amount of HSP60 [23]. The predominant localizations are the synovial lining, the synovial endothelium and the cartilage–pannus junction [25]; in addition, synovial lymphocytes also express HSP60 [26]. The factors leading to synovial HSP60 expression are not known, but heat is obviously not the only factor because normal and osteoarthritic synovial membranes also express this stress protein. Shear stress, for example, has been identified as an inducer of HSP60 in endothelial cells [10] and it is conceivable that shear stress might have a role in HSP60 expression in the synovial lining and endothelium.

The expression of HSP60 in the synovial membrane is likely to exert a protective role on stressed cells. Interestingly, rat strains resistant to adjuvant arthritis express HSP60 abundantly in the synovial membrane, whereas arthritis-prone Lewis rats fail to show a significant expression of HSP60, an observation that suggests a protective role of this molecule against arthritis [27]. Overexpression of HSP60 might also explain the development of an autoimmune response to this protein because overexpression might go along with altered localization of this normally mitochondria-localized protein [28,29]. Similarly to HSP60 expression, the presence of an autoimmune response directed to HSP60 is associated with a protective rather than a pathogenic effect in both adjuvant and human arthritis [30–32].

Besides HSP60, the inducible form of HSP70 is also expressed in the synovial membrane, but its expression is confined to the RA synovial membrane and it is not found in the synovial tissue of osteoarthritis patients [11]. HSP70 is strictly regulated by the activation of its transcription factor HSF-1; the activation of HSF-1 is also characteristic of the synovial membrane of RA patients but not that of osteoarthritis patients. HSP70 expression is predominantly found in the synovial-lining layer, in both synovial macrophages and fibroblasts (Fig. 2a). Besides heat stress, proinflammatory cytokines, especially tumour necrosis factor- α (TNF- α) and interleukin (IL)-1, and also shear stress were identified as the factors leading to the expression of synovial HSP70 [11]. HSP70 protects cells against a variety of toxic conditions such as oxidative stress, TNF- α , heat shock, heavy metals and cellular damage after ischaemia. In addition, HSP70 overexpression has been shown to be protective against apoptotic death; synovial cells expressing elevated HSP70 levels might therefore develop a certain resistance to apoptosis [33,34]. This would be in line with the observation of the low frequency of apoptosis in rheumatoid synovium despite the abundance of apoptosis-inducing factors

Figure 2

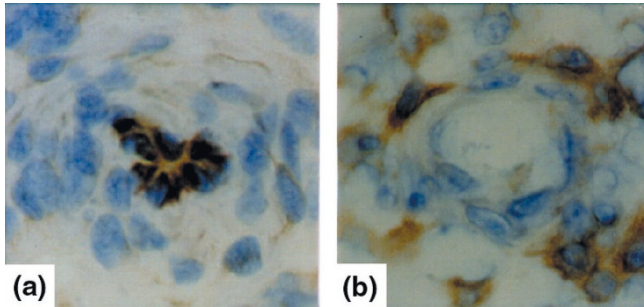


Expression of hsp70 (a) and phosphorylated p38 protein kinase (b) in the synovial-lining layer. Immunohistochemistry of synovial membranes of patients with RA shows a hypertrophic synovial-lining layer. (a) Immunostaining for heat shock protein (HSP)70; (b) staining for phosphorylated p38 protein kinase (brown). Both molecules show strong expression in the synovial-lining layer of patients with RA.

[35,36]. Besides HSP70, other anti-apoptotic signals, such as a protein called sentrin, are observed in the synovial membrane [37], and it remains to be elucidated whether other heat shock proteins are also expressed in the synovial tissue of RA. HSP27 might be a good candidate because it is activated by the p38 stress kinase pathway, which is a part of TNF- α signalling [38].

Cytokine stress and stress-activated protein kinases

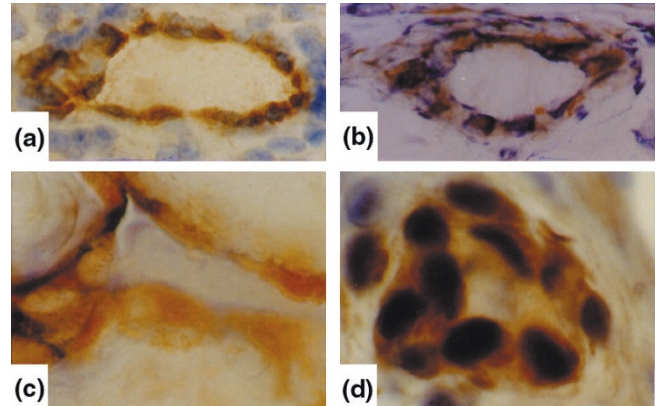
As well as physical stress factors, the synovial membrane is targeted by a number of proinflammatory cytokines, which trigger and fuel the chronic inflammatory process in the synovium by governing a variety of pathophysiological processes including cell activation, cell proliferation, tissue resorption and chemotaxis [39–41]. In particular, TNF- α and IL-1 have been identified as major pathogenic mediators in RA, inducing and propagating a chronic inflammatory process in the synovial membrane [42]. Both cytokines

Figure 3

Expression of phosphorylated p38 protein kinase and ERK protein kinase in synovial microvessels. Immunohistochemistry of synovial microvessels of patients with RA show the expression of phosphorylated p38 protein kinase in synovial endothelial cells (a). In contrast, the phosphorylated ERK protein kinase (b) is not expressed by synovial endothelial cells but by cells surrounding the synovial microvessel.

and their receptors are overexpressed in the synovial tissue of patients with RA in comparison with degenerative joint disease [43–46], and inhibition of their action has proved to be a useful therapeutic strategy [47,48]. There is a wide range of cellular responses to TNF- α , some of which, such as proinflammatory cytokines [49,50] and metalloproteinase synthesis [51], chemotaxis [52] and the induction of apoptotic cell death [53], are likely to be involved in synovitis. As a consequence, the signalling pathways of TNF- α and IL-1 are complex, and several groups of intracellular signal transduction molecules participate in them. The most important of these are the NF- κ B pathway [54], the caspase cascade [55] and the mitogen- and stress-activated protein kinases (MAPK/SAPKs) [56,57]. The functions of NF- κ B activation and of the caspase cascades in the synovial membrane have already been described elsewhere [55] and will therefore not be reviewed here. We have recently focused our attention on signalling by the MAPK/SAPK pathway, which represents the cellular integration of stress signals, namely cytokines and mitogens.

In the synovial membrane of RA patients, all three known MAPK/SAPK signalling pathways are activated, including the extracellular signal-regulated protein kinase (ERK), c-Jun amino-terminal kinase (JNK) and p38 pathways [58,59]. In contrast, synovial membranes of degenerative joint disease show almost no MAPK/SAPK activation [58,59], indicating the essential role of inflammation as the basis for synovial MAPK/SAPK activation. Each MAPK/SAPK signalling pathway has a relatively distinct localization within the synovial membrane. Signalling by p38 is found predominantly in the synovial vascular endothelium and in macrophages and fibroblasts of the synovial-lining layer (Fig. 2b). In contrast, ERK signalling is

Figure 4

Expression of phosphorylated p38 protein kinase and transcription factor ETS-1 in synovial microvessels and synovial endothelial cells. Immunohistochemistry of synovial microvessels (a,c) and synovial endothelial cells (b,d) of patients with RA shows the expression of phosphorylated p38 protein kinase (a,b) and ETS-1 transcription factor (c,d) in the endothelium of synovial microvessels.

typical of areas of the synovial membrane located around synovial microvessels and is not found in the synovial endothelium (Fig. 3). Finally, JNK activation is seen in the sublining regions, where especially mononuclear cell infiltration containing macrophages and T cells signals through the JNK pathway. The differential synovial expression of stress signalling pathways (Table 1) underlines the variability of cellular responses to stress factors in different sub-compartments of the synovial membrane. Cytokines such as TNF, IL-1 and IL-6 have been demonstrated to be the major inducers of all three stress kinases in human synovial cells; however, several other factors, such as growth factors in ERK signalling, heat stress in p38 signalling, and other cytokines such as fibroblast growth factor and vascular endothelial growth factor might have additional roles.

Stress kinase activation in the synovium largely depends on the type of stress kinase signalling but also on the cell type using the signalling pathway. Thus, synovial endothelial cells, for example, show p38 activation (Fig. 4), which might be due to the effect of TNF- α or IL-1; however, vascular endothelial growth factor might also have a role because this growth factor uses p38 signalling for angiogenesis [60]. Endothelial p38 activation is known to be important for crucial endothelial functions: chemoattraction by inducing the expression of E-selectin [61], vascular cell adhesion molecule-1 [62] and macrophage chemoattractant protein-1 [63]; angiogenesis by inducing the activation of ETS-1 transcription factor [64], which is overexpressed in the synovial membrane of RA [65] (Fig. 4); and vasodilatation by inducible nitric oxide synthase (iNOS) [66]. In

Table 1**Differential activation of MAPK/SAPK in the synovial subcompartments of RA**

Signalling pathway	Synovial-lining layer	Sublining layer	Mononuclear infiltrates	Perivascular region	Vascular endothelium
p38	+++	+	+	-	+++
ERK	-	+	-	+++	-
JNK	+	++	++	+	-

contrast, in the synovial-lining layer, the function of p38 might be completely different because it might exert its activity as a transcriptional inducer of proinflammatory cytokine synthesis [67,68]. Thus, p38 activation in the synovial lining is likely to be a central mechanism in the development of a hypertrophic and destructive synovial lining, which is most actively involved in synovitis.

As regards the activation of JNK, its expression by mononuclear cells might reflect the production of IL-6, IL-8 and matrix metalloproteinases *in situ* by these cells, because JNK signals the transcriptional activation of these proteins [69,70]. In contrast, JNK activation in synovial T cells might mirror the fact that JNK is essential for T cell effector function and stimulates T cells to differentiate into a T helper 1 type [71]. The fact that recent progress in pharmacological research has led to the development of selective inhibitors of all three MAPK/SAPK pathways will provide further insights into the role of each of these pathways in the pathogenesis of RA. Their therapeutic use is under investigation and might prove to be a new and fascinating targeted therapy [72].

Oxidative stress

Finally, there is experimental evidence for the presence of oxidative stress in the synovial tissue of RA. An example is thioredoxin, a cellular catalyst induced by oxidative stress, which is overexpressed in synovial cells and tissue of patients with RA [73]. Thioredoxin, which is induced by TNF- α , acts as a co-stimulatory factor for the TNF- α -induced synthesis of IL-6 and IL-8 by synovial fibroblast-like cells [74]. Furthermore, thioredoxin acts in a proinflammatory manner by activating the NF- κ B pathway [74]. However, several mechanisms of antioxidative functions are present in the synovial membrane of RA: metallothioneins are cytosolic proteins protecting cells from metal toxicity and oxidative stress [75], and they are expressed particularly in synovial fibroblasts in the lining layer and to a smaller extent in the sublining regions. Thioredoxin reductase is an antagonist of proinflammatory thioredoxin and is also produced *in situ* in the synovial membrane of RA, thus counterbalancing the effects of oxidative stress and thioredoxin [73]. As a third regulatory system, the activity of glutathione reductase is also increased in patients with RA [76]. However, these mechanisms might not fully counterbalance oxidative stress in

the synovial membrane of RA and therefore might not prevent the exposure of synovial cells to reactive oxygen products [77]. There is experimental evidence that oxidative stress can induce mutations of key regulatory genes, including the p53 tumour suppressor gene [77–79]. These mutations could be part of the self-perpetuation process by which RA becomes a chronic condition.

Conclusion

Shear stress, heat stress, cytokine stress and oxidative stress are the hostile conditions to which cells are exposed in the synovial membrane of RA. Given that the rate of apoptotic cell death in the synovial membrane is rather low, it is obvious that synovial cells have adapted to these stressful conditions and manage to survive. Thus, the cellular response to the stress factors in the joint in general is not cell death, but instead cellular activation, proliferation and participation in a chronic inflammatory process. Signalling systems such as the p38 stress kinase pathway can drive cells into apoptotic death; however, in RA, p38 is likely to be centrally involved in synovitis, thus signalling inflammation and tissue proliferation. The resistance of synovial cells to stress is an important observation and might be associated with the expression of HSPs in the synovial tissue, which can protect the cells from apoptotic death. It seems that this balance between stress factors and the cellular stress response influences the course of synovitis to a similar extent to the balance of pro-inflammatory and anti-inflammatory mechanisms. Thus, the stress response might be an integral part in, and a significant cause of, the chronic nature of RA. Investigations into the molecular actions of stress in the inflamed joint are therefore of great importance to our better understanding of the events taking place in the synovial membrane in RA. Targeting stress pathways by specific therapies, such as inhibition of the p38 pathway, might become increasingly important and represent new and potentially effective therapeutic tools.

References

- Hlavacek M: **The role of synovial fluid filtration by cartilage in lubrication of synovial joints. IV. Squeeze-film lubrication: the central film thickness for normal and inflammatory synovial fluids for axial symmetry under high loading conditions.** *J Biomech* 1995, **28**:1199–1205.
- Gomez JE, Thurston GB: **Comparison of the oscillatory shear viscoelasticity and composition of pathological synovial fluids.** *Biorheology* 1993, **30**:409–427.

3. Shay AK, Bliven ML, Scampoli DN, Otterness IG, Milici AJ: **Effects of exercise on synovium and cartilage from normal and inflamed joints.** *Rheumatol Int* 1995, **14**:183-189.
4. Zou Y, Hu Y, Metzler B, Xu Q: **Signal transduction in arteriosclerosis: mechanical stress-activated MAP kinases in vascular smooth muscle cells (review).** *Int J Mol Med* 1998, **1**: 827-834.
5. Mayr M, Li C, Zou Y, Huemer U, Hu Y, Xu Q: **Biomechanical stress-induced apoptosis in vein grafts involves p38 mitogen-activated protein kinases.** *FASEB J* 2000, **14**:261-270.
6. Li C, Hu Y, Mayr M, Xu Q: **Cyclic strain stress-induced mitogen-activated protein kinase (MAPK) phosphatase 1 expression in vascular smooth muscle cells is regulated by Ras/Rac-MAPK pathways.** *J Biol Chem* 1999, **274**:25273-25280.
7. Hu Y, Cheng L, Hochleitner BW, Xu Q: **Activation of mitogen-activated protein kinases (ERK/JNK) and AP-1 transcription factor in rat carotid arteries after balloon injury.** *Arterioscler Thromb* 1997, **17**:2808-2816.
8. Nagel T, Resnick N, Dewey CF Jr, Gimbrone MA Jr: **Vascular endothelial cells respond to spatial gradients in fluid shear stress by enhanced activation of transcription factors.** *Arterioscler Thromb* 1999, **19**:1825-1834.
9. Hishikawa K, Oemar BS Yang Z, Luscher TF: **Pulsatile stretch stimulates superoxide production and activates nuclear factor- κ B in human coronary smooth muscle.** *Circ Res* 1997, **81**:797-803.
10. Hochleitner BW, Hochleitner EO, Obrist P, Eberl T, Amberger A, Xu Q, Margreiter R, Wick G: **Fluid shear stress induces heat shock protein 60 expression in endothelial cells *in vitro* and *in vivo*.** *Arterioscler Thromb* 2000, **20**:617-623.
11. Schett G, Redlich R, Xu Q, Bitzan P, Groger M, Tohidast-Akrad M, Kiener H, Smolen J, Steiner G: **Enhanced expression of heat shock protein 70 (hsp70) and heat shock factor 1 (HSF1) activation in rheumatoid arthritis synovial tissue.** *J Clin Invest* 1998, **102**:302-312.
12. Vance BA, Kowalski CG, Brinckerhoff CE: **Heat shock of rabbit synovial fibroblasts increases expression of mRNAs for two metalloproteinases, collagenase and stromelysin.** *J Cell Biol* 1989, **108**:2037-2043.
13. Van Eden W, Young DB: *Stress Proteins in Medicine*. New York: Marcel Dekker, Inc; 1996.
14. Schlesinger MJ: **Heat shock proteins.** *J Biol Chem* 1990, **265**: 12111-12114.
15. Lis J, Wu C: **Protein trafficking on the heat shock promotor.** *Cell* 1993, **74**:1-4.
16. Morimoto RI, Tissieres A, Georgopoulous C: **The stress response, function of the proteins, and perspectives.** In *Stress Proteins in Biology and Medicine*. Edited by Morimoto RI. Cold Spring Harbor, NY: Cold Spring Harbor Laboratory; 1990.
17. Xu Q, Fawcett TW, Udelsmann R, Holbrook NJ: **Activation of heat shock transcription factor 1 in rat aorta in response to high blood pressure.** *Hypertension* 1996, **28**:53-57.
18. Liu H, Lightfoot R, Stevens JL: **Activation of heat shock factor by alkylating agents is triggered by glutathione depletion and oxidation of protein thiols.** *J Biol Chem* 1996, **271**:4805-4812.
19. Strandell E, Buschard K, Saldeen J, Welsh N: **Interleukin-1 beta induces the expression of hsp70, heme oxygenase and Mn-SOD in FACS-purified rat island beta-cells, but not in alpha-cells.** *Immunol Lett* 1995, **48**:145-148.
20. Cohen IR, Young DB: **Autoimmunity, microbial immunity and the immunological homunculus.** *Immunol Today* 1991, **12**: 105-110.
21. Celis L, Vanduyver C, Geusens P, Dequeker J, Raus J, Zhang J: **Clonal expansion of mycobacterial heat shock protein-reactive T lymphocytes in synovial fluid and of blood of rheumatoid arthritis patients.** *Arthritis Rheum* 1997, **40**:510-519.
22. de Graeff Meeder ER, van der Zee R, Rijkers GT, Schuurman HJ, Kuis W, Bijlsma JW, Zegers BJ, van-Eden W: **Recognition of human 60kD heat shock protein by mononuclear cells from patients with juvenile chronic polyarthritis.** *Lancet* 1991, **337**: 1368-1372.
23. Sharif M, Worall JG, Singh B, Gupta RS, Lydyard PM, Lambert C, McCulloch J, Rook GA: **The development of monoclonal antibodies to the human mitochondrial 60-kd heat shock protein, and their use in studying the expression of the protein in rheumatoid arthritis.** *Arthritis Rheum* 1992, **35**:1427-1433.
24. Evans DJ, Norton P, Ivanji J: **Distribution in tissue sections of the human groEL-stress protein homologue.** *APMIS* 1990, **98**: 437-441.
25. Karlsson Parra A, Soderstrom K, Ferm M, Ivanyi J, Kiessling R, Klareskog L: **Presence of human 65 kD heat shock protein (hsp) in inflamed joints and subcutaneous nodules of RA patients.** *Scand J Immunol* 1990, **31**:283-288.
26. Sato H, Miyata M, Kasukawa R: **Expression of heat shock protein on lymphocytes in peripheral blood and synovial fluid from patients with rheumatoid arthritis.** *J Rheum* 1996, **23**: 2027-2032.
27. Miyata M, Sato H, Sato H, Sato Y, Kodama E, Kasukawa R: **Significance of endogenous heat shock protein in adjuvant arthritis.** *J Rheum* 1999, **26**:2210-2214.
28. Schett G, Xu Q, Amberger A, Van der Zee R, Recheis H, Wick G: **Autoantibodies against heat shock protein 60 mediate endothelial cytotoxicity.** *J Clin Invest* 1995, **96**:2569-2577.
29. Soltys BJ, Gupta RS: **Cell surface localization of the 60 kDa heat shock chaperonin protein (hsp60) in mammalian cells.** *Cell Biol Int* 1997, **21**:315-320.
30. Hogervorst EJM, Wagenaar JPA, Wagenaar CJP, Boog R, van der Zee R, van Emden JDA, van Eden W: **Adjuvant arthritis and immunity to the mycobacterial heat 65-kD heat shock protein.** *Int Immunol* 1992, **4**:719-727.
31. Prakken AB, van Eden W, Rijkers GT, Kuis W, Toebes-EA, de-Graeff-Meeder ER, van-der-Zee R, Zegers BJ: **Autoreactivity to human heat shock protein 60 predicts disease remission in oligoarticular juvenile rheumatoid arthritis.** *Arthritis Rheum* 1996, **39**:1826-1832.
32. de Graeff Meeder ER, van Eden W, Rijkers GT, Prakken AB, Kuis W, Voorhorst-Ogink MM, van-der-Zee R: **Juvenile chronic arthritis: T cell reactivity to human HSP60 in patients with a favourable course of arthritis.** *J Clin Invest* 1995, **95**:934-940.
33. Mosser DD, Caron A, Bourget L, Denis-Larose C, Massie B: **Role of human heat shock protein hsp70 in protection against stress-induced apoptosis.** *Mol Cell Biol* 1997, **17**:5317-5322.
34. Schett G, Steiner CW, Groger M, Winkler S, Graninger W, Smolen J, Xu Q, Steiner G: **Activation of Fas inhibits heat-induced activation of HSF1 and up-regulation of hsp70.** *FASEB J* 1999, **13**:833-842.
35. Sugiyama M, Tsukazaki T, Yonekura A, Matsuzaki S, Yamashita S, Iwasaki K: **Localization of apoptosis and expression of apoptosis related proteins in the synovium of patients with rheumatoid arthritis.** *Ann Rheum Dis* 1996, **55**:442-449.
36. Asahara H, Hasunuma T, Kobata T, Inoue H, Muller-Ladner U, Gay S, Sumida T, Nishioka K: **In situ expression of protooncogenes and Fas/Fas ligand in rheumatoid arthritis synovium.** *J Rheumatol* 1997, **24**:430-435.
37. Franz JK, Pap T, Hummel KM, Nawrath M, Aicher WK, Shigeyama Y, Muller-Ladner U, Gay RE, Gay S: **Expression of sentrin, a novel antiapoptotic molecule, at sites of synovial invasion in rheumatoid arthritis.** *Arthritis Rheum* 2000, **43**:599-607.
38. Rouse J, Cohen P, Trigon S, Morange M, Alonso-Llamazares A, Zamanillo D, Hunt T, Nebreda AR: **A novel kinase cascade triggered by stress and heat shock that stimulates MAPKAP kinase-2 and phosphorylation of the small heat shock proteins.** *Cell* 1994, **78**:1027-1037.
39. Zvaifler NJ: **Editorial. Rheumatoid arthritis: the multiple pathways to chronic synovitis.** *Lab Invest* 1995, **73**:307-310.
40. Firestein GS, Manning AM: **Signal transduction and transcription factors in rheumatic disease.** *Arthritis Rheum* 1999, **42**: 609-621.
41. Smolen JS, Tohidast-Akrad M, Gal A, Kunaver M, Eberl G, Zenz P, Falus A, Steiner G: **The role of T-lymphocytes and cytokines in rheumatoid arthritis.** *Scand J Rheumatol* 1996, **25**:1-4.
42. Brennan FM, Maini RN, Feldmann M: **Role of pro-inflammatory cytokines in rheumatoid arthritis.** *Springer Semin Immunopathol* 1998, **20**:133-147.
43. Chu CQ, Field M, Feldmann M, Maini RN: **Localization of tumor necrosis factor α in synovial tissues and the cartilage pannus junction in patients with rheumatoid arthritis.** *Arthritis Rheum* 1991, **34**:1125-1132.
44. Farahat MN, Yanni G, Poston R, Panayi GS: **Cytokine expression in synovial membranes of patients with rheumatoid arthritis and osteoarthritis.** *Ann Rheum Dis* 1993, **52**:870-875.
45. Brennan, FM, Gibbons DL, Mitchell T, Cope AP, Maini RN, Feldmann M: **Enhanced expression of TNF receptor mRNA and**

- protein in mononuclear cells isolated from rheumatoid arthritis synovial joints. *Eur J Immunol* 1992, **22**:1907–1912.
46. Steiner G, Tohidast-Akrad M, Witzmann G, Vesely M, Studnicka-Benke A, Gal A, Kunaver M, Zenz P, Smolen JS: **Cytokine production by synovial T cells in rheumatoid arthritis.** *Rheumatology* 1999, **38**:202–213.
 47. Elliott MJ, Maini RN, Feldmann M, Kalden JR, Antoni C, Smolen JS, Leeb B, Breedveld FC, Macfarlane JD, Bijl H, Woody JN: **Randomized double blind comparison of a chimaeric monoclonal antibody to tumor necrosis factor α (cA2) versus placebo in rheumatoid arthritis.** *Lancet* 1994, **344**:1105–1110.
 48. Arend WP, Dayer JM: **Inhibition of the production and effects of interleukin-1 and tumor necrosis factor α in rheumatoid arthritis.** *Arthritis Rheum* 1995, **38**:1151–1160.
 49. Nawroth PP, Bank I, Handley D, Cassimeris J, Chess L, Stern D: **Tumor necrosis factor (cachectin) interacts with endothelial cell receptors to induce release of interleukin 1.** *J Exp Med* 1986, **163**:1363.
 50. Brennan FM, Jackson A, Chantry D, Maini R, Feldmann M: **Inhibitory effect of TNF alpha antibodies on synovial cell interleukin-1 production in rheumatoid arthritis.** *Lancet* 1989, **2**:244–247.
 51. Dayer JM, de Rochemonteix B, Burrus B, Denczuk S, Dinarello CA: **Human recombinant interleukin 1 stimulates collagenase and prostaglandin E2 production by human synovial cells.** *J Clin Invest* 1986, **77**:645–648.
 52. Saklatvala J: **Tumour necrosis factor α stimulates resorption and inhibits synthesis of proteoglycan in cartilage.** *Nature* 1986, **322**:547–549.
 53. Verheij M, Bose R, Lin XH, Yao B, Jarvis WD, Grant S, Birrer MJ, Szabo E, Zon LI, Kyriakis JM, Haimovitz-Friedman A, Fuks Z, Kolesnick RN: **Requirement for ceramide-initiated SAPK/JNK signalling in stress-induced apoptosis.** *Nature* 1996, **380**:75–79.
 54. Mercurio F, Manning AM: **NF- κ B as a primary regulator of the stress response.** *Oncogene* 1999, **18**:6163–6171.
 55. Rath PC, Aggarwal BB: **TNF-induced signaling in apoptosis.** *J Clin Immunol* 1999, **19**:350–364.
 56. Kyriakis JM, Avruch J: **Sounding the alarm: protein kinase cascades activated by stress and inflammation.** *J Biol Chem* 1996; **271**:24313–24316.
 57. Canman CE, Kastan MB: **Three pathways to stress relief.** *Nature* 1996, **384**:213–214.
 58. Schett G, Tohidast-Akrad M, Smolen JS, Redlich K, Steiner G: **Differential induction, localization and regulation of stress-activated protein kinases, ERK-, JNK and p38, activation in rheumatoid arthritis synovial tissue.** *Arthritis Rheum* 2000, **43**(suppl):186.
 59. Schett G, Tohidast-Akrad M, Smolen JS, Jahn Schmid B, Steiner CW, Bitzan P, Zenz P, Redlich K, Xu Q, Steiner G: **Activation, differential localization and regulation of stress-activated protein kinases, ERK-, JNK and p38 in synovial tissue and cells of rheumatoid arthritis.** *Arthritis Rheum* 2000, **43**:2501–2512.
 60. Rosseau S, Houle F, Landry J, Huot J: **p38 MAP kinase activation by vascular endothelial growth factor mediates actin reorganization and cell migration in human endothelial cells.** *Oncogene* 1997, **15**:2169–2177.
 61. Read MA, Whitley MZ, Gupta S, Pierce JW, Best J, Davis RJ, Collins T: **Tumor necrosis factor α -induced E-selectin expression is activated by the nuclear factor- κ B and c-JUN N-terminal kinase/p38 mitogen-activated protein kinase pathways.** *J Biol Chem* 1997, **272**:2753–2761.
 62. Pietersma A, Tilly BC, Gaestel M, de Jong N, Lee JC, Koster JF, Sluiter W: **p38 mitogen activated protein kinase regulates endothelial VCAM-1 expression at the post-transcriptional level.** *Biochem Biophys Res Commun* 1997, **230**:44–48.
 63. Goebeler M, Kilian K, Gillitzer R, Kunz M, Yoshimura-T; Brocker EB, Rapp UR, Ludwig S: **The MKK6/p38 stress kinase cascade is critical for tumor necrosis factor- α -induced expression of monocyte-chemoattractant protein-1 in endothelial cells.** *Blood* 1999, **93**:857–865.
 64. Tanaka K, Oda N, Iwasaka C, Abe M, Sato Y: **Induction of Ets-1 in endothelial cells during reendothelialization after denuding injury.** *J Cell Physiol* 1998, **176**:235–244.
 65. Redlich K, Kiener HP, Schett G, Tohidast-Akrad M, Radda I, Stummvoll GH, Bitzan P, Smolen JS, Steiner G: **The transcription factor ETS-1 is overexpressed in rheumatoid arthritis synovial tissue.** *Arthritis Rheum* 2001, in press.
 66. Paul A, Wilson S, Belham CM, Robinson CJ, Scott PH, Gould GW, Plevin R: **Stress-activated protein kinases: activation, regulation and function.** *Cell Signal* 1997, **9**:403–410.
 67. Lee JC, Laydon JT, McConnell PC, Gallagher JF, Kumar S, Green D, McNulty D, Blumenthal MJ, Heys JR, Landvatter SW: **A protein kinase involved in the regulation of inflammatory cytokine synthesis.** *Nature* 1994, **372**:739–746.
 68. Beyaert R, Cuenda C, Vanden Berghe W, Plaisance S, Lee JC, Haegeman G, Cohen P, Fiers W: **The p38/RK protein mitogen-activated protein kinase pathway regulates interleukin-6 synthesis response to tumor necrosis factor.** *EMBO J* 1996, **15**:1914–1923.
 69. Krause A, Holtmann H, Eickemeier S, Winzen R, Szamel M, Resch K, Saklatvala J, Kracht M: **Stress-activated protein kinase/Jun N-terminal kinase is required for interleukin (IL)-1-induced IL-6 and IL-8 gene expression in the human epidermal carcinoma cell line KB.** *J Biol Chem* 1998, **273**:23681–23689.
 70. Force T, Pombo CM, Avruch JA, Bonventre JV, Kyriakis JM: **Stress-activated protein kinases in cardiovascular disease.** *Circ Res* 1996, **78**:947–953.
 71. Dong C, Yang DD, Tournier C, Whitmarsh AJ, Xu J, Davis RJ, Flavell RA: **JNK is required for effector T-cell function but not for T-cell activation.** *Nature* 2000, **405**:91–94.
 72. Wadsworth SA, Cavender DE, Beers SA, Lalan P, Schafer PH, Malloy EA, Wu W, Fahmy B, Olini GC, Davis JE, Pellegrino-Gensey JL, Wachter MP, Siekierka JJ: **RWJ 67657, a potent, orally active inhibitor of p38-mitogen-activated protein kinase.** *J Pharm Exp Ther* 1999, **291**:680–687.
 73. Maurice MM, Nakamura H, Gringhuis S, Okamoto T, Yoshida S, Kullmann F, Lechner S, van-der-Voort EA, Leow A, Versendaal J, Muller-Ladner U, Yodoi-J, Tak PP, Breedveld FC, Verweij CL: **Expression of the thioredoxin-thioredoxin-reductase system in inflamed joints of patients with rheumatoid arthritis.** *Arthritis Rheum* 1999, **42**:2430–2439.
 74. Yoshida S, Katoh T, Tetsuka T, Uno K, Matsui N, Okamoto T: **Involvement of thioredoxin in rheumatoid arthritis: its costimulatory roles in the TNF- α -induced production of IL-6 and IL-8 from cultured synovial fibroblasts.** *J Immunol* 1999, **163**:351–358.
 75. Backman JT, Siegle I, Fritz P: **Immunohistochemical localization of metallothionein in synovial tissue of patients with chronic inflammatory and degenerative joint disease.** *Virchows Arch* 1998, **433**:153–160.
 76. Mulherin DM, Thurnham DI, Situnayake RD: **Glutathione reductase activity, riboflavin status, and disease activity in rheumatoid arthritis.** *Ann Rheum Dis* 1996, **55**:837–840.
 77. Tak PP, Zvaifler NJ, Green DR, Firestein GS: **Rheumatoid arthritis and p53: how oxidative stress might alter the course of inflammatory diseases.** *Immunol Today* 2000, **21**:78–82.
 78. Firestein GS, Nguyen K, Aupperle KR, Yeo M, Boyle DL, Zvaifler NJ: **Apoptosis in rheumatoid arthritis: p53 overexpression in rheumatoid arthritis synovium.** *Am J Pathol* 1996, **149**:143–151.
 79. Firestein GS, Echeverri F, Yeo M, Zvaifler NJ, Green DR: **Somatic mutations in the p53 tumor suppressor gene in rheumatoid arthritis synovium.** *Proc Natl Acad Sci USA* 1997, **94**:10895–10900.