



RESEARCH

Open Access

MEIS1, *PREP1*, and *PBX4* Are Differentially Expressed in Acute Lymphoblastic Leukemia: Association of *MEIS1* Expression with Higher Proliferation and Chemotherapy Resistance

Judith A Rosales-Aviña^{1†}, Jorge Torres-Flores^{1†}, Adriana Aguilar-Lemarroy¹, Carmen Gurrola-Díaz², Georgina Hernández-Flores¹, Pablo C Ortiz-Lazareno¹, José M Lerma-Díaz¹, Ruth de Celis¹, Óscar González-Ramella³, Esperanza Barrera-Chaires⁴, Alejandro Bravo-Cuellar¹ and Luis F Jave-Suárez^{1*}

Abstract

Background: The Three-amino acid-loop-extension (*TALE*) superfamily of homeodomain-containing transcription factors have been implicated in normal hematopoiesis and in leukemogenesis and are important survival, differentiation, and apoptosis pathway modulators. In this work, we determined the expression levels of *TALE* genes in leukemic-derived cell lines, in blood samples of patients with Acute lymphoblastic leukemia (ALL), and in the blood samples of healthy donors.

Results: Here we show increased expression of *MEIS1*, *MEIS2*, and *PREP1* genes in leukemia-derived cell lines compared with blood normal cells. High levels of *MEIS1* and *PREP1*, and low levels of *PBX4* expression were also founded in samples of patients with ALL. Importantly, silencing of *MEIS1* decreases the proliferation of leukemia-derived cells but increases their survival after etoposide treatment. Etoposide-induced apoptosis induces down-regulation of *MEIS1* expression or *PREP1* up-regulation in chemotherapy-resistant cells.

Conclusions: Our results indicate that up-regulation of *MEIS1* is important for sustaining proliferation of leukemic cells and that down-regulation of *MEIS1* or up-regulation of *PREP1* and *PBX* genes could be implicated in the modulation of the cellular response to chemotherapeutic-induced apoptosis.

Keywords: *TALE* genes, leukemia, *MEIS1*, *PREP1*, *PBX*, Apoptosis

Background

Three-amino-acid loop extension (*TALE*) genes belong to the homeobox group and are distinguished by the presence of three extra amino acids in the loop binding the first to the second alpha helix of the homeodomain [1]. *TALE* proteins include subfamilies MEINOX and PBC. MEINOX is composed of the members *MEIS1*, *MEIS2*, the recently described *MEIS3*, *PREP1*, and *PREP2* in humans [1,2]. The PBC subfamily contains *PBX1*, *PBX2*, *PBX3*, and *PBX4* proteins [3,4]. Expression of *TALE* genes

has been related with normal development, differentiation, survival, apoptosis, and with the hematopoietic process [5-10]. Indeed, some *TALE* genes are targets for viral insertion or for chromosome translocations during leukemogenesis. In this regard, *MEIS1* has been characterized as a common proviral integration site in BXH-2 mice [11]; in these mice, leukemic tumors that contain a viral integration site at the *MEIS1* locus frequently possess an additional co-integration site in some *HOX* genes [12], which suggests the required cooperative effect of *MEIS* and *HOX* during leukemogenesis. Over-expression of *MEIS1* in CD34⁺ hematopoietic cells has been related with suppression of differentiation, promotion of proliferation, and self-renewal. Interestingly, high levels of *MEIS1* in myeloid progenitors have been shown to regulate the cellular

* Correspondence: lfjave@yahoo.com

† Contributed equally

¹División de Inmunología, Centro de Investigación Biomédica de Occidente - IMSS, Sierra Mojada No. 800, CP 44340, Guadalajara, Jalisco, Mexico
Full list of author information is available at the end of the article

response to some cytokines, favoring self-renewal or differentiation. Moreover, in the murine myeloid cell line 32Dcl3, it has been observed that *MEIS1* can block granulocytic differentiation in response to G-CSF [13]. *MEIS1* has been also found over-expressed in human leukemic cells [14].

Other TALE proteins that have been also related with normal hematopoiesis and leukemogenesis comprise members of the PBX group. PBX proteins were first identified as HOX cofactors involved in developmental gene regulation [15,16]. *PBX1* plays a role in the development of blood cell populations because hematopoietic stem cells from *PBX1*^{-/-} embryos have reduced colony-forming activity and are unable to establish multilineage hematopoiesis in competitive reconstitution experiments [8]. PBX-PREP1 complexes are required for the production of normal CD4 and CD8 T-lymphocytes. Furthermore, PBX-MEIS complexes have been implicated in megakaryocyte differentiation, and PBX-PREP complexes have been also connected with the regulation of Interleukin (IL)-10 production in macrophages during the phagocytosis of apoptotic cells [17]. PREP proteins are also important during development; for instance, deletion of *PREP1* in mice and zebrafish induces embryonic lethality [18,19]. Mice hypomorphic for *PREP1* exhibit defects in T-cell development, with a decreased number of single-positive thymocytes, increased apoptosis of double-positive thymocytes, and abnormalities in the expression of $\alpha\beta$ and $\gamma\delta$ T-cell receptors [19]. Additionally, reduction in *PREP1* expression directly affects the expression of *MEIS* and *PBX* and consequently, normal embryonic hematopoiesis [20].

In summary, *TALE* genes codify for important transcription factors involved in hematopoiesis and leukemogenesis and are important survival, differentiation, and apoptosis pathway modulators in hematopoietic cells. In this study, we analyzed the expression of *TALE* genes in leukemia-derived cell lines, in samples of patients with Acute lymphoblastic leukemia (ALL), and in samples of clinically healthy donors. We observed consistent up-regulation of *MEIS1* and *PREP1* and down-regulation of *PBX4* in leukemic cell lines and in the samples of patients with ALL. Interestingly, RNA-mediated down-modulation of *MEIS1* lowers leukemic cell proliferation. Additionally, chemotherapeutic treatment of lymphoblastic cell lines induces an increment in *PREP1*, *PBX2*, and *PBX4* messenger RNA (mRNA) levels that could be related with a more resistant phenotype.

Results

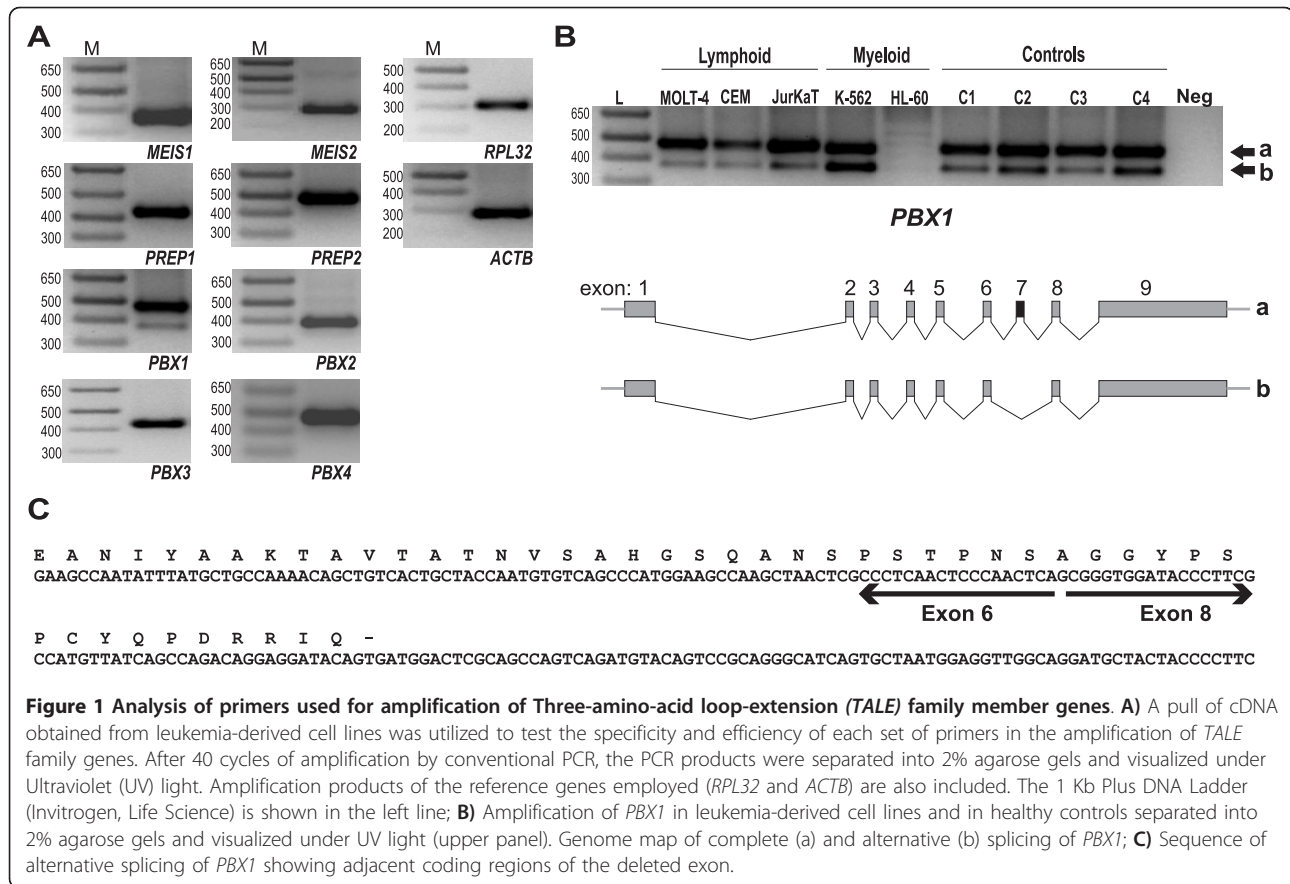
Higher Expression Levels of *MEIS1*, *MEIS2*, and *PREP1* Genes in Leukemia-derived Cell Lines Compared with Normal Cells

TALE genes are normally involved in the differentiation of hematopoietic cells and their expression has been

related with deregulated differentiation. From this starting point, we wanted to determine the expression levels of *TALE* genes in cells with impaired differentiation. For this purpose, we choose leukemic-derived cell lines and normal differentiated cells as the study model. In order to analyze the expression of *TALE* genes, we first selected primer pairs to amplify these genes and proved these primers by conventional PCR reactions utilizing a pull of complementary DNA (cDNA) obtained from leukemia-derived cell lines (Table 1). All primer pairs were able to amplify a specific product corresponding to the expected size for each *TALE* gene (Figure 1A); however, for *PBX1*, we observed an additional band of lower molecular size. We carried out the same approach to analyze primer pairs designed to amplify the L32 ribosomal protein (*RPL32*) and Beta-Actin (*ACTB*) in order to have reference genes to measure relative gene expression (Figure 1A). Regarding *PBX1*, we also noticed the

Table 1 Primer pairs used for PCR reactions

GENE	ACCESSION NUMBER	PRIMER SEQUENCE	Tm
<i>MEIS1</i>	[GenBank: NM_002398]	F: CCC CAG CAC AGG TGA CGA TGA T R: TGC CCA TTC CAC TCA TAG GTC C	60
<i>MEIS2</i>	[GenBank: NM_170677]	F: CCA TCG ACC TCG TCA TTG AT R: CCT CCT TTC TTC TGG CGT TTT T	60
<i>PREP1</i>	[GenBank: NM_004571]	F: GGT TTT GGC CTG ATT CTA TTG C R: GTG GGG AGG GAG TGG TG	65
<i>PREP2</i>	[GenBank: NM_022062]	F: GCC ACC AAT ATA ATG CGT TCT T R: GTG TTC CAA GCC CAG GTC	65
<i>PBX1</i>	[GenBank: NM_002585]	F: CTA ACT CGC CCT CAA CTC C R: GTG TCC AGA TTG GCT GAA ATA G	60
<i>PBX2</i>	[GenBank: NM_002586]	F: GGC GGC TCT TTC AAT CTC TCA R: GTC TCG TTA GGG AGG GGA TGA C	65
<i>PBX3</i>	[GenBank: NM_006195]	F: CAA GGG TCC CAA GTC GG R: TGG CCT AAT TGG ATA AAG TGC T	60
<i>PBX4</i>	[GenBank: NM_025245]	F: ATG GGG AAG TTT CAA GAA GAG G R: ATC TCG AGT CGC AGC AGA C	65
<i>GAPDH</i>	[GenBank: NM_002046]	F: CAC TGC CAC CCA GAA GAC TGT G R: TGT AGG CCA TGA GGT CCA CCA C	60
<i>RPL32</i>	[GenBank: NM_000994]	F: GCA TTG ACA ACA GGG TTC GTA G R: ATT TAA ACA GAA AAC GTG CAC A	60
<i>ACTB</i>	[GenBank: NM_001101]	F: TCC GCA AAG ACC TGT ACG R: AAG AAA GGG TGT AAC GCA ACT A	60



low-molecular-weight band existing in controls and in all leukemia derived cell lines (Figure 1B). By sequence analysis, we found that this corresponds to an isoform of *PBX1* in which exon 7 is lost (Figures 1B and 1C). This indicated that our PCR primers were specific for *PBX1*, and also that they are able to amplify both *PBX1* versions. Because we planned to quantify gene expression by real time PCR (qRT-PCR) utilizing the SYBR Green strategy, in the case of *PBX1*, the value obtained in quantification correspond to the sum of the expression of both isoforms.

Next, we proceeded to analyze the expression of TALE genes by qRT-PCR in leukemia-derived cell lines. We employed five cell lines including Jurkat, CEM, MOLT-4, K562, and HL-60; the first three are lymphoblastic, and the latter two, myeloid. We determined the crossing point for each target gene and subsequently normalized this with the crossing point of an internal reference gene to calculate the ΔCP , which represents an absolute and more comparative value (see Materials and Methods). It is important to bear in mind that the ΔCP value is inversely proportional to gene expression. To obtain more consistent results, we use two different reference genes: *RPL32*, and *ACTB*. As can be observed in Figure

2, results obtained with *RPL32* and *ACTB* follow the same tendency. In this regard, *RPL32* and *ACTB* were selected as confident reference genes. Interestingly, when expression levels of TALE genes in leukemic cell lines and blood-derived normal cells were evaluated, significant differences were observed in the expression of *MEIS1*, *MEIS2*, and *PREP1*. Normal blood cells have greater ΔCP values for these three genes, thus lower expression (Figure 2). For *PREP2* and all *PBX* members, we did not observe any variation. Additionally, on comparing ΔCP values we could note that in all cell lines and control cells, *PREP2* possesses the lowest mRNA level.

Up-regulation of *MEIS1* and *PREP1* and Down-regulation of *PBX4* in ALL Samples vs. Those of Healthy Individuals

To confirm whether variations in TALE expression observed in cell lines were also observed in samples of patients with leukemia, we recruited 14 samples of patients diagnosed with Acute lymphoblastic leukemia (ALL) and 19 samples from clinically healthy volunteers (Table 2). We again analyzed the genetic expression of TALE genes by qRT-PCR employing the previously mentioned *RPL32* and *ACTB* as reference genes to

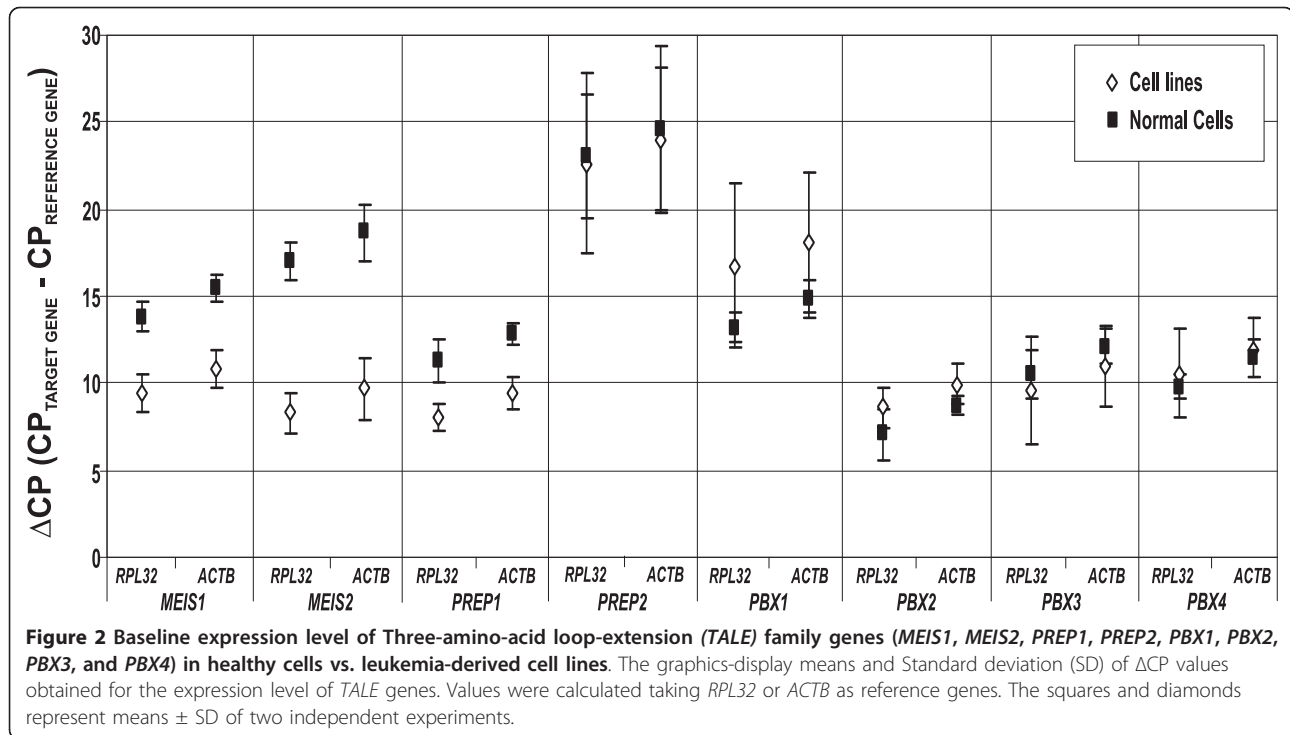


Table 2 Overview of controls and patients

Control ID	Gender	Age (years)	Patient ID	Gender	Age (years)	Diagnosis
1	M	33	1	M	38	ALL
2	M	26	2	M	82	ALL
3	F	54	3	M	56	ALL
4	F	34	4	F	46	ALL
5	F	68	5	F	32	ALL
6	M	51	6	F	36	ALL
7	F	43	7	F	56	ALL
8	F	24	8	M	84	ALL
9	F	56	9	M	61	ALL
10	M	40	10	M	58	ALL
11	F	53	11	F	30	ALL
12	F	35	12	M	52	ALL
13	F	26	13	F	43	ALL
14	M	39	14	M	18	ALL
15	M	73				
16	M	45				
17	F	39				
18	M	40				
19	M	26				

ALL, Acute lymphoblastic leukemia; ID, identification; M, Masculine; F, Feminine.

calculate ΔCP values. As can be observed in Figure 3, distribution of ΔCP s obtained for ALL samples were noticeably different from those obtained for control samples in the cases of *MEIS1* and *PREP1*. Differences in ΔCP values for *MEIS2* and *PREP2* in patients compared with controls were not statistically significant. For the *PBX* group (see Figure 4), we observed that *PBX1* and *PBX3* were, to some extent, up-regulated in patients with ALL, but this difference was only statistically significant when we normalized with reference gene *RPL32*. *PBX2* expression remained unchanged in patients and controls, and the sole member that clearly exhibited down-regulation in ALL samples was *PBX4*.

MEIS1 Silencing Decreases the Proliferation Rate of Leukemic-derived Cell Lines

Because we determined a consistent up-regulation of *MEIS1* and *PREP1* in cell lines and in samples of patients with ALL, it was interesting to us to determine which type of advantage provides the high expression of these genes to leukemic cells. First we analyzed the role of *MEIS1*. The *MEIS1* gene has been localized in chromosome 2 and it has been described that Jurkat cells are monosomic for this chromosome, CEM cells have two copies, and K562 cells are trisomic [21]; in this regard, expression of *MEIS1* ought to be different in these cell lines. To test this hypothesis, we analyzed *MEIS1* baseline expression in these cell lines by qRT-

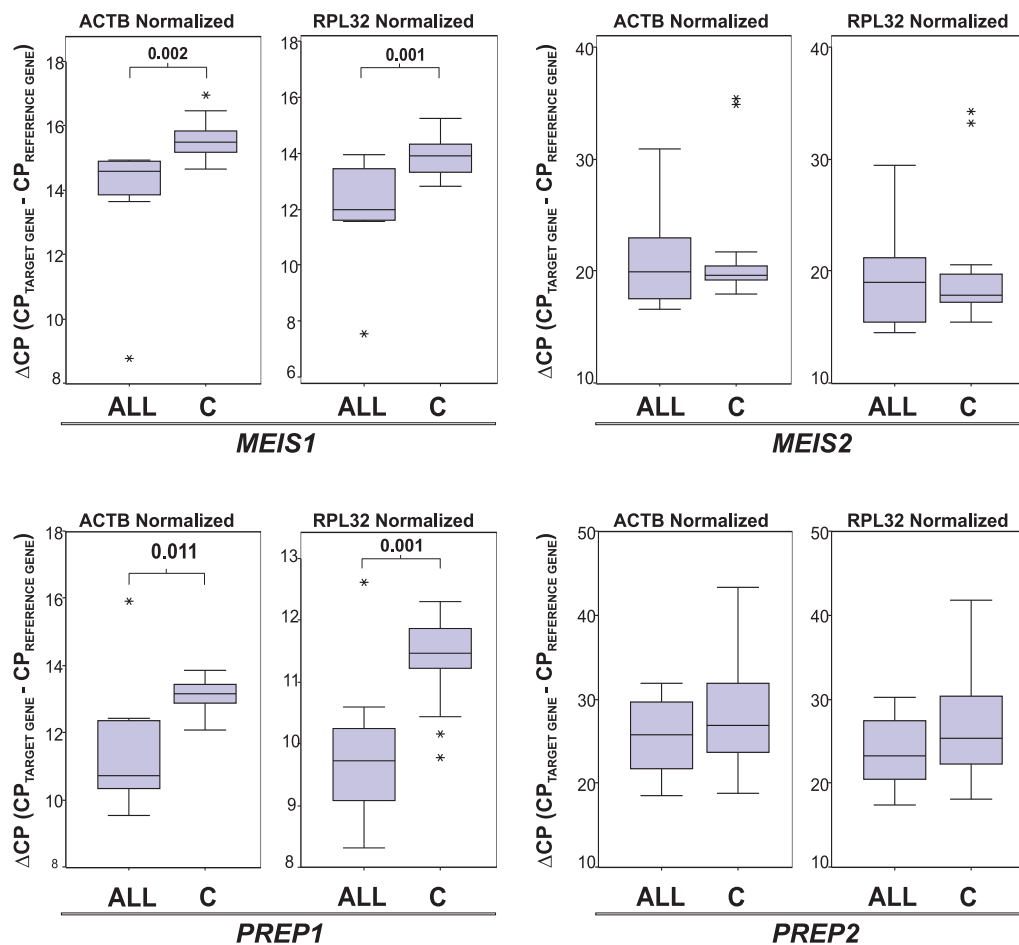


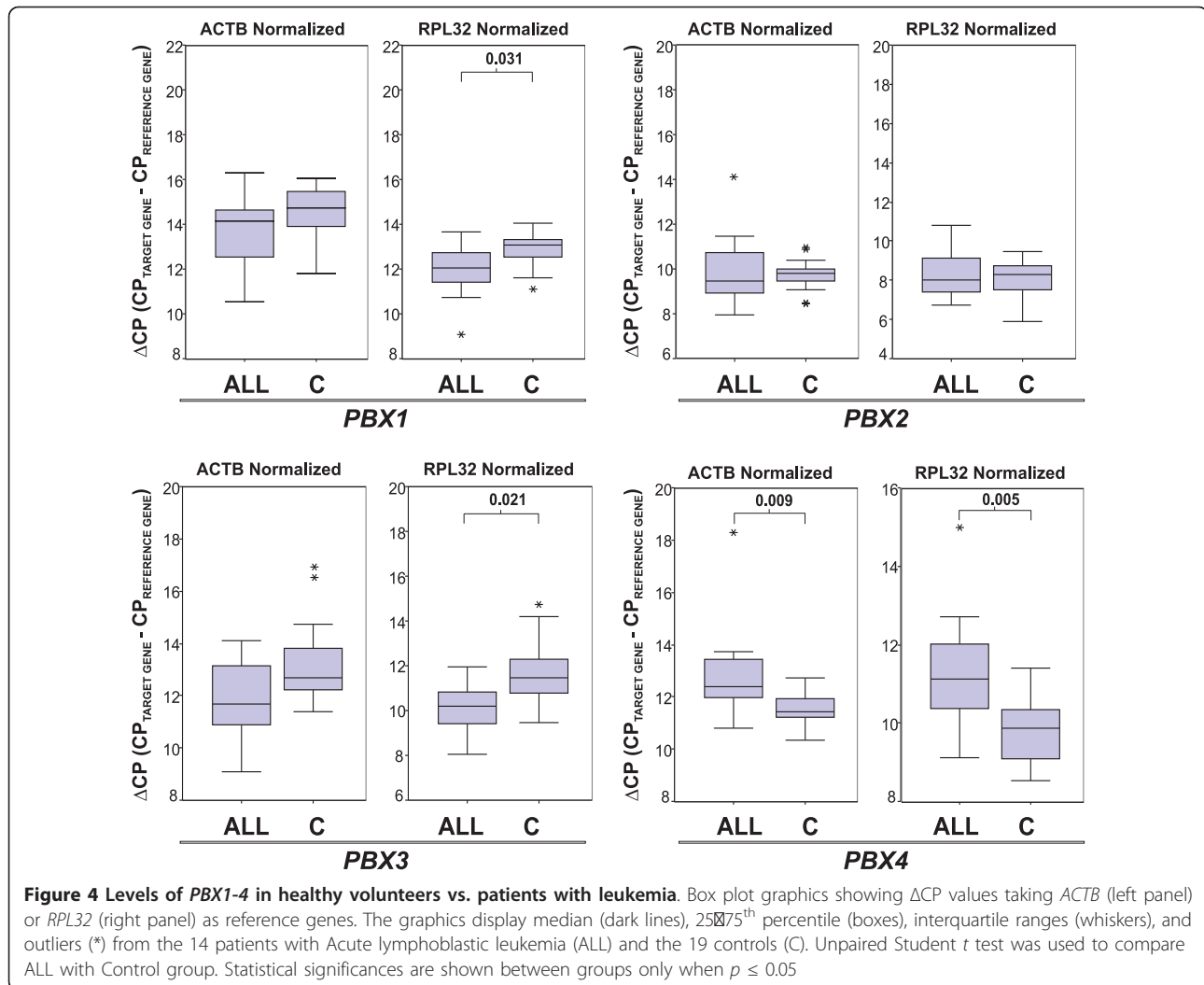
Figure 3 Levels of *MEIS1-2* and *PREP1-2* in healthy volunteers vs. patients with leukemia. Box plot graphics showing ΔCP values taking *ACTB* (left panel) or *RPL32* (right panel) as reference genes. The graphics display median (dark lines), 25th–75th percentile (boxes), interquartile ranges (whiskers), and outliers (*) from the 14 patients with Acute lymphoblastic leukemia (ALL) and the 19 controls (C). Unpaired Student *t* test was used to compare ALL with Control group. Statistical significances are shown between groups only when $p \leq 0.05$.

PCR (Figure 5A). As expected, Jurkat was the cell line with the lowest *MEIS1* expression, followed by CEM and K562 expressing highest levels. Taking advantage of the existing different levels of *MEIS1* in the cell lines, we utilized Jurkat and K562 cells to investigate whether high *MEIS1* expression is related with increased proliferation. We observed that K562 have a higher proliferation rate than Jurkat cells (Figure 5B). To demonstrate the direct involvement of *MEIS1* in this exacerbated proliferation, we performed silencing assays in both cell lines. We employed short hairpin RNAs shRNAs directed to two different regions of *MEIS1* mRNA: one was directed to Exon 9 (E9), and the other to Exon 13 (E13). By using recombinant virus, we introduced these sequences into Jurkat and K562 cells. To assure that all infected cells were carrying the construction, a resistance gene to puromycin was also introduced and the infected cells were selected with this antibiotic.

Additionally, we infected the cells with an empty virus (without shRNA) and selected them also with puromycin in order to possess a control for the selection and infection process. We then tested *MEIS1* (mRNA) levels by qRT-PCR. As shown in Figures 5C and 5E, *MEIS1* mRNA levels decrease with both shRNAs in both cell lines to nearly 50% of the initial expression. Employing the *MEIS1*-silenced cells, we then measured the proliferation rate and observed that proliferation was affected in all clones in which *MEIS1* was silenced (Figures 5D and 5F). This effect was more obvious in K562 cells, which are the cells that express more *MEIS1*.

Expression of *MEIS1* and *PREP1* Is Modulated in Response to Apoptosis Induction by Etoposide

The other *TALE* member that we found up-regulated in leukemic cells was *PREP1*. Expression of this gene has been associated with resistance to apoptosis and it also



has been described that *PREP1* regulates *MEIS1* expression [20,22]. In this respect, we subsequently analyzed whether the expression of *PREP1* and *MEIS1* was related with resistance to apoptosis induction by chemotherapeutic stimulus in leukemic cells. In order to assess this parameter, cultured cells were exposed to etoposide for 1 or 2 h; thereafter, variations in *MEIS1* and *PREP1* expression were analyzed by qRT-PCR. We observed that after etoposide treatment, Jurkat cells exhibit a tendency to increase *MEIS1* expression, CEM cells remained unchanged, while diminishes K562 expression was noteworthy (Figure 6A). For *PREP1*, nearly no difference was observed in Jurkat cells; the response of CEM cells was more important because a notorious up-regulation was evidenced. Interestingly, K562 cells down-regulate *PREP1* expression in response to etoposide (Figure 6A). To correlate these observations with phenotypic response, we measured the percentage of apoptotic cells after 5, 15, and 24 h

of etoposide treatment. As can be observed in Figure 6B, Jurkat cells were the cells most sensitive to etoposide action; in contrast, CEM and K562 cells were the most resistant cells.

Given that K562 cells show a chemotherapeutic-resistant phenotype and that response of these cells to etoposide exposure is the down-modulation of *MEIS1*, and because we observed that Jurkat cells increased *MEIS1* expression and were the most sensitive cells, we postulate that *MEIS1* down-regulation could be a mechanism for resistance to etoposide-induced apoptosis. In this regard, Jurkat clones with *MEIS1*-silenced should be more resistant than Jurkat infected with the empty virus (pLVX) or with parental Jurkat cells. We tested this hypothesis exposing the cells to etoposide and measuring the percentage of surviving cells (Figure 6C). From this approach, we observed that Jurkat clones in which *MEIS1* was silenced demonstrated a higher percentage of cell survival compared with pLVX infected cells or

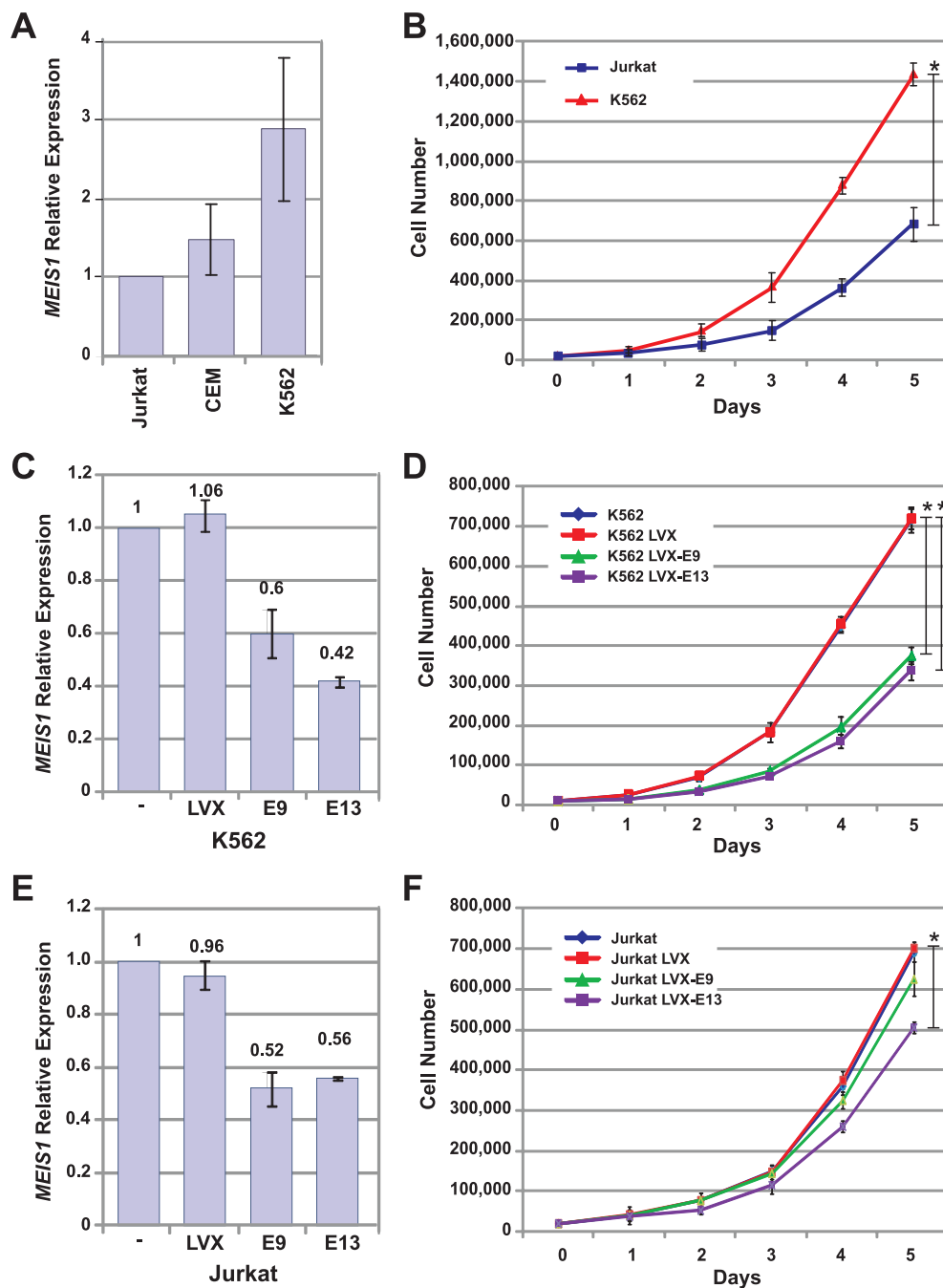


Figure 5 Effect of *MEIS1* expression on cell growth of leukemia-derived cell lines. A) Expression levels of *MEIS1* were analyzed by qRT-PCR in Jurkat, CEM, and K562 cells; expression of RPL32 was also determined and used as reference gene to calculate relative expression; B) Cell proliferation analysis of K562 and Jurkat cells; C, E) Expression levels of *MEIS1* in Jurkat and K562 cell lines infected with virus carrying shRNA-E9 or shRNA-E13. Values were obtained by qRT-PCR using RPL32 as reference gene; D, F) Proliferation of *MEIS1*-silenced cells. Jurkat and K562 cells were infected with an shRNA directed to exon 9 (LVX-E9) and an shRNA directed to exon 13 (LVX-E13). Cell growth was determined counting the cells daily for 5 days. Graphics show means \pm Standard deviations (SD) of values obtained from three independent experiments. Statistical differences were calculated at the end point of proliferation curves using 2 way ANOVA analysis and Bonferroni posttest, (*) significances are shown between groups only when $p \leq 0.05$.

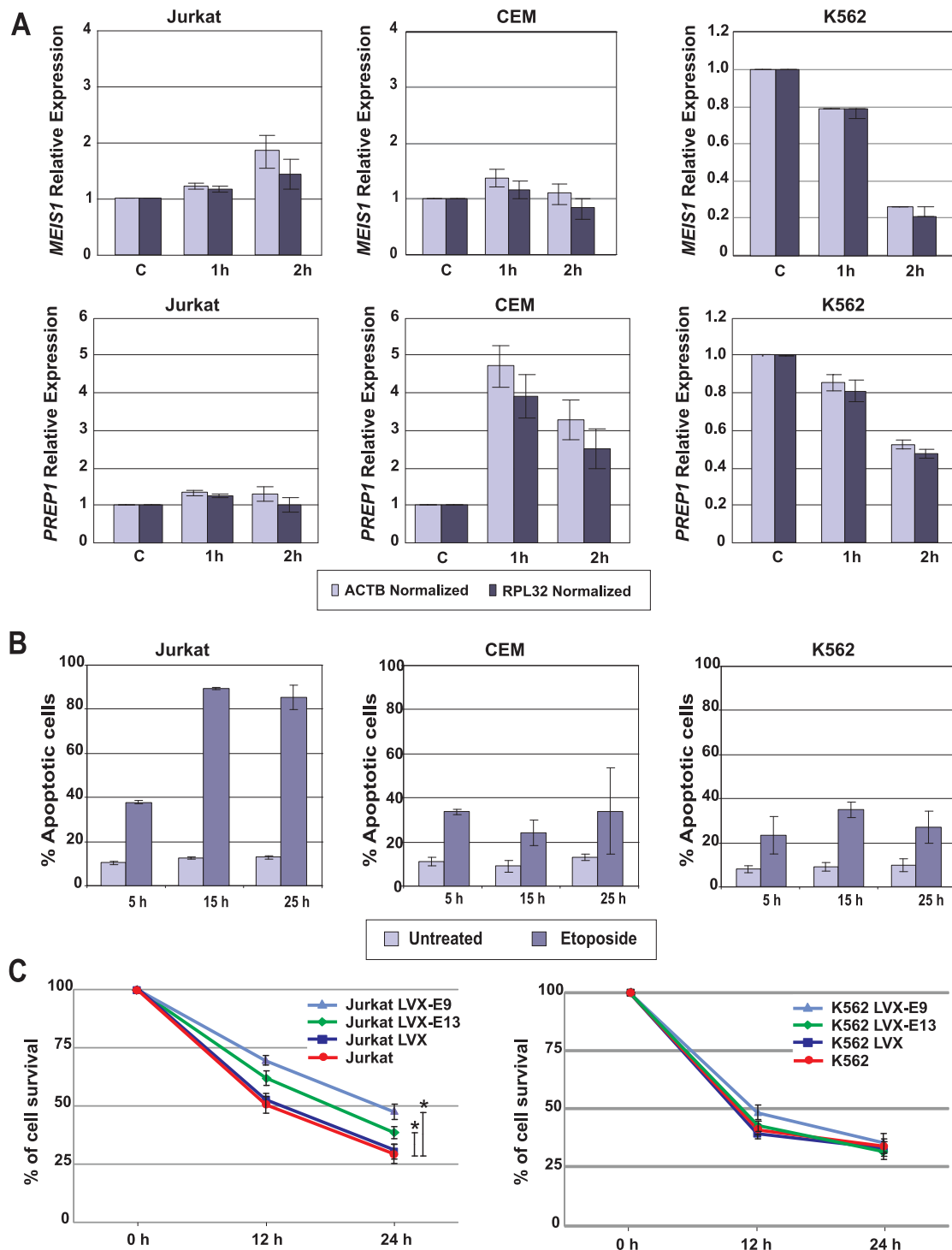


Figure 6 Modulation of *MEIS1* and *PREP1* expression after etoposide treatment. A) Jurkat, CEM, and K562 cells were treated with 170 μ M etoposide for 1 and 2 h; thereafter, total RNA was extracted and retrotranscribed. Real time-PCR assays were performed to determine the relative expression levels of *MEIS1* and *PREP1*. Expression analysis was carried out by normalizing with non-treated cells and employing *RPL32* as reference gene. The bars represent means \pm Standard deviations (SD) of two independent experiments; B) Percentage of apoptotic cells induced by etoposide treatment. Jurkat, CEM, and K562 cells were treated with 170 μ M etoposide; the percentage of apoptotic cells was measured using Annexin-V-FLUOS. The bars represent means \pm Standard deviations (SD) of three independent experiments. C) *MEIS1*-silenced (LVX-E9 and -E13) cells were treated with 170 μ M etoposide for 12 and 24 hours. Parental cells (Jurkat and K562) or empty vector-silenced cells (LVX) were also used. After etoposide treatment WST-1 was added to cell cultures and incubate for 3 additional hours. The percentage of cell survival was calculated measuring Optical density (OD) at 450 nm (OD of untreated cells was set as 100%). Statistical differences were calculated at the end point of the curves using 2 way ANOVA analysis and Bonferroni posttest, (*) significances are shown between groups only when $p \leq 0.05$.

parental cells. *MEIS1* silencing in K562 cells did not further increase the percentage of surviving cells.

Discussion

TALE genes are a particular group of homeobox genes that are important in the regulation of proliferation, apoptosis, and normal cell differentiation. Anomalous expression of these genes has been involved in the development of hematological malignancies [23]. In this work, we first analyzed variations in the expression of *TALE* genes in leukemia-derived cell lines compared with normal control cells. In that we observed dissimilar *MEIS1*, *MEIS2*, and *PREP1* expression levels, we wished to confirm whether these changes were also observed in samples of patients with leukemia. Interestingly, we found variations in *MEIS1*, *PREP1*, and *PBX4* expression. It has been reported that over-expression of *MEIS1* blocks myeloid cell differentiation; thus, high levels of *MEIS1* are required to maintain hematopoietic cells in an undifferentiated state [13]. We observed high levels of *MEIS1* mRNA in leukemia-derived cell lines and also in the blood samples of patients with ALL; our results are in agreement with observations that lower levels of *MEIS1* are unfavorable for cell life, because *MEIS1* down-regulation has been related with decreased proliferation and poor survival of neuroblastoma and leukemia cell lines [24,25]. Moreover, Kawagoe *et al.* reported that down-regulation of *MEIS1* is required to induce differentiation of hematopoietic cells [26]. Our findings support the notion that this gene plays an oncogenic role and that its expression is required to sustain proliferation and block differentiation in leukemia cells [24,27]. Controversially, it has been reported that high levels of this protein can also trigger apoptosis; we observed that high *MEIS1*-expressing K562 cells were more resistant to apoptosis induction than Jurkat cells, which exhibited lower levels of *MEIS1*; however, it is also well known that *MEIS1* requires the presence of protein partners to achieve its different functions [16,28,29]; one explanation for the contradictory effects reported for *MEIS1* could be that, regardless of higher *MEIS1* expression, cells can regulate the action of this protein by modulating the expression of *MEIS1* cofactors, such as *HOX*. The availability of the later can transform *MEIS1* action from proliferative into proapoptotic [28].

In the cell lines studied, we observed that an apoptotic stimulus induces *MEIS1* up- and down-regulation (Jurkat and K562, respectively). A strategy of tumor cells for survival could be down-regulation of *MEIS1*. In this respect, through lowering its proliferation rate, tumor cells avoid DNA damage, which can induce apoptosis.

Regarding *MEIS2* expression, this gene has been found in immature neuronal precursor cells, lens proliferative

cells, ovarian cancer, and other tumor cell types, which underlies its possible role in sustaining proliferation [30]. We observed strong expression in leukemia-derived cell lines compared with control cells, which is in agreement with the findings of Smith *et al.* [31]; however, when we analyzed its expression in patients, we found no variation in the expression of this gene (Figure 3).

To a greater extent, we observed that all studied cell lines express *PREP1*, but not *PREP2*. *PREP1* has been described to be ubiquitously expressed in adult tissues [32] and *PREP2* is depicted as possessing more restricted expression, being negative in peripheral blood leukocytes [2]. After apoptosis induction by etoposide, CEM cells greatly increase *PREP1* gene expression, *PREP1* has been directly involved in the regulation of apoptosis: it has been described that *BCL_{XL}*, an intrinsic apoptotic-pathway regulator, is a direct target of *PREP1* [22]. *PREP* proteins interact with *PBX* members to achieve their functions [33]. Interaction of *PREP* with *PBX1* and *PBX2* increases the stability of *PBX* proteins and additionally increases the affinity of *PREP* for DNA binding [34,35]; the expression of *BCL_{XL}* and *p53* has been reported to be regulated by *PREP1* in cooperation with *PBX1b* [22,36]. In etoposide-treated CEM cells, it was observed that expression of *PBX2* and *PBX4* increases (Additional file 1); *PBX2* has been reported as a negative apoptosis modulator through negative regulation of *BCL2* [37]. Up-regulation of *PREP1* together with down-regulation of *PBX* genes could account for the etoposide-resistant phenotype of CEM cells; this resistance could be mediated by *BCL_{XL}* and *p53*. High levels of *p53* have been associated with apoptosis but, in the presence of *BCL_{XL}*-mediated survival signals, *p53* can induce senescence instead of apoptosis [38].

Conclusions

In conclusion, our study shows that *MEIS1* and *PREP1* mRNA levels are significantly up-regulated in patients with ALL in comparison with healthy controls and inversely, that *PBX4* is down-regulated in patients with ALL. Importantly, utilizing silencing assays, we confirmed that down-modulation of *MEIS1* produces a lower leukemic-cell proliferation rate, an effect that was most notorious in the K562 myeloblastic cell line. Etoposide-induced apoptosis leads to changes in the expression of *PREP1* and *MEIS1*; up-regulation of *PREP1* and down-regulation of *MEIS1* were independently related with resistance to apoptosis. Taken together, these results support the important role that *TALE* genes play in leukemic cell proliferation and survival, in addition to their probable involvement during leukemia development. Therefore, it could be important to evaluate *MEIS1* and *PREP1* expression in patients with leukemia prior to and after chemotherapeutic

treatment and to correlate these findings with the clinical response.

Methods

Cells and cell culture

We used five commercially available human leukemia-derived cell lines: MOLT-4; Jurkat and CEM cells derived from lymphoid leukemia; HL-60 derived from promyelocytic leukemia, and K562 from erythroleukemia. Cells were grown in RPMI-1640 medium supplemented with 10% Fetal bovine serum (FBS), penicillin (100 U/mL), and streptomycin (100 µg/mL); all products mentioned previously were obtained from GIBCO™ (Invitrogen Corp., Carlsbad, CA, USA). Cultures were maintained at 37°C in a humidified atmosphere with 5% CO₂.

Patients and sample collection

Peripheral blood samples were collected from 14 patients with Acute lymphoblastic leukemia (ALL) according to World Health Organization (WHO) classification criteria at the Centro Médico Nacional de Occidente of the Mexican Social Security Institute (CIBO-IMSS) and the Hospital Civil de Guadalajara Fray Antonio Alcalde. Additionally, blood samples from 19 healthy donors were also collected from the IMSS Blood Bank. Letters of informed consent and protocols were approved by the CLIS-1305 Ethical Board of CIBO-IMSS.

Drugs and *in vitro* cell treatments

Etoposide was obtained from Lemery Laboratorios, México. The drug was stored at 4°C for <4 days and adjusted to the desirable concentration with DMEM culture medium immediately prior to utilization. The concentration employed was 170 µM etoposide.

RNA extraction and cDNA synthesis

Total RNA was isolated by using the PureLink™ Micro-to-Midi Total RNA Purification System (Invitrogen Corp.) from 5 × 10⁶ cultured cells as described by the manufacturer. Peripheral blood samples from patients with leukemia and from healthy donors were collected with EDTA as anticoagulant and mixed immediately after collection with 45 mL of RNA/DNA Stabilization Reagent for Blood/Bone Marrow (Roche Applied Science, Germany) and stored at -80°C for preservation. The stabilized samples were utilized for mRNA isolation via a two-step procedure by means of magnetic separation employing the mRNA Isolation kit for blood/bone marrow (Roche Applied Science). mRNA was finally eluted from the magnetic pearls in 20 µL of water and stored at -80°C until use.

cDNA synthesis was performed from 5 µg of total RNA or 12 uL mRNA employing the Transcriptor First Strand cDNA Synthesis kit primed with oligo(dT) (cat. no. 04897030001, Roche Applied Science). The protocol was conducted as recommended by the manufacturer. cDNA were stored at -20°C and aliquots were utilized as templates for PCR and RT-PCR reactions.

PCR and RT-PCR

PCR reactions were carried out utilizing the set of primers presented in Table 1; the primers were designed using Oligo v6.0 software from sequences obtained from the NCBI-website GenBank Nucleotide database. PCR was performed using Taq DNA Polymerase (cat. no. 11146173001, Roche Applied Science) and Deoxynucleoside triphosphates (cat. no. 1969064, Roche Applied Science) in a PX2 Thermal Cycler (Thermo Electron Corp.). All reactions were conducted in 20 µL at the specified T_m (see Table 1). PCR products were resolved in 2% agarose gels containing 0.1 µg/mL ethidium bromide (Sigma Aldrich, Germany), visualized under Ultraviolet (UV) light, and documented with a DigiDoc-It System, (UVP, UK). RT-PCR analysis was achieved by employing the LightCycler-FastStart DNA MasterPLUS SYBR Green I kit (cat. no. 03515885001, Roche Applied Science) in the LightCycler 1.5 System (Roche Diagnostics GmbH, Mannheim, Germany). Data were normalized to the expression of the reference genes *RPL32* (L32 Ribosomal Protein) and *ACTB* (β-actin).

ΔCP analysis

To normalize target gene expression, we employed two different reference genes. We calculated the Crossing point (CP) for target and reference genes in each sample and subsequently calculated the ΔCP value of each sample, i.e., the target gene CP minus the reference gene CP. This facilitated analysis by taking only the intrinsic values of each sample. CPs from *ACTB*, and *RPL32* were employed for this analysis. It is extremely noteworthy that ΔCP is inversely proportional to the expression of the target gene.

Lentivirus production and infection

Oligonucleotides used to construct shRNAs were: forward 5'- GAT CCG CGG GAC TCA CCA TCC TTC AAG TGA ATT CAA GAG ATT CAC TTG AAG GAT GGT GAG TCC CGT TTT TTG-3' and reverse 5'-AAT TCA AAA AAC GGG ACT CAC CAT CCT TCA AGT GAA TCT CTT GAA TTC ACT TGA AGG ATG GTG AGT CCC GCG-3' directed to *MEIS1* exon 9 (E9); forward 5'-GAT CCG CCG TGT GTT TAG AAG CCT AAT TCA AGA GAT TAG GCT TCT AAA CAC ACG GCT TTT TTA CGC GTG-3 and reverse 5'-

AAT TCA CGC GTA AAA AAG CCG TGT GTT TAG AAG CCT AAT CTC TTG AAT TAG GCT TCT AAA CAC ACG GCG-3' directed to *MEIS1* exon 13 (E13); this latter sequence has been previously used [24]. Complementary primers were annealed and cloned into the vector pLVX-shRNA1 (Clontech Laboratories, USA) using the restriction sites BamHI and EcoRI (NEB-Biolabs, USA). To produce infectious viral particles, Lenti-X 293T cells were transiently transfected by Lentiphos HT/Lenti-X HT Packaging Systems with lentiviral vectors pLVX-Puro or pLVX-shRNA1-E9 or pLVX-shRNA1-E13 as described by the manufacturer (Clontech Laboratories, USA). After 48 h, supernatants were checked with Lenti-X GoStix (Clontech Laboratories, USA) to determine whether sufficient viral particles were produced before transducing target cells. Supernatants were filtered through a 0.22- μ m PES filter to eliminate detached cells, were aliquoted, and subsequently stored at -80°C until use. Jurkat and K562 cells (2.5×10^5) were transduced with approximately 4.5×10^5 IFU/mL of supernatants. RNA extractions were obtained after at least 2 weeks of puromycin selection (1 $\mu\text{g}/\text{mL}$).

Cell survival determination

Cell survival was determined by cleavage of tetrazolium salt WST-1 to formazan by cellular mitochondrial dehydrogenase enzymes. After different treatment periods, cells were incubated with 10 $\mu\text{L}/\text{well}$ of WST-1/ECS solution (BioVision Research, Mountain View, CA, USA) for 3 h. Absorbance (450 nm) of treated and untreated samples was determined on a microtiter plate reader (SynergyTM HT Multi-Mode Microplate Reader; Biotek, Winooski, VT, USA). Data are reported as percentage of cell survival taking untreated control cells as 100% of cell survival.

Apoptosis detection

Cell death was measured by flow cytometry using propidium iodide (cat. no. P4864, Sigma-Aldrich) and Annexin-V-FIUOS (cat. no. 1828681, Roche Applied Science) as recommended by these manufacturers. Cells were seeded in 6-well plates at a density of 3×10^5 cells per well in 1 mL RPMI medium containing or not etoposide (170 μM). After 5, 15, and 25 h, each sample was analyzed in a FACS Aria cytometer (BD Biosciences).

Additional material

Additional file 1: Modulation of *PBX1-4* expression after etoposide treatment. Jurkat and CEM cells were treated with 170 μM etoposide for 1 and 2 h; thereafter, total RNA was extracted and retrotranscribed. Real time-PCR assays were performed to determine the relative expression levels of *PBX1-4*. Expression analysis was carried out by normalizing with non-treated cells and employing *RPL32* as reference gene. The bars

represent means \pm Standard deviations (SD) of two independent experiments.

Acknowledgements

We thank our technicians María de Jesús Delgado-Ávila and Leticia Ramos-Zavala for their efficient support. This work was supported by grants CB-2005-25121/51502-M (CONACyT-México), FIS/2005/1/1/022, and FIS/2006/1A/1/051 (IMSS) to LFJ-S.

Author details

¹División de Inmunología, Centro de Investigación Biomédica de Occidente - IMSS, Sierra Mojada No. 800, CP 44340, Guadalajara, Jalisco, Mexico. ²Instituto de Enfermedades Crónicas Degenerativas, Departamento de Biología Molecular y Genómica, Centro Universitario de Ciencias de la Salud, Universidad de Guadalajara, Sierra Mojada No. 900, CP 44340, Guadalajara, Jalisco, Mexico. ³Laboratorio de Inmunología, Departamento de Fisiología, Centro Universitario de Ciencias de la Salud, Universidad de Guadalajara, Sierra Mojada No. 950, CP 44340, Guadalajara, Jalisco, Mexico. ⁴Servicio de Hematología, Hospital Civil de Guadalajara Fray Antonio Alcalde, Hospital No. 278, CP 44280, Guadalajara, Jalisco, Mexico.

Authors' contributions

JAR-A, JT-F, and AA-L carried out the PCR experiments but were also involved in all of the experimental work. GH-F, PCO-L, and JML-D made up the cell culture and devised drug treatment and flow cytometry for apoptosis detection. RdC determined cell survival. AB-C, CG-D, OG-R, and EB-C were involved in the recruitment of patients with leukemia and controls. AA-L and LFJ-S performed the statistical analysis, conceived of and designed the study, and wrote the manuscript. All authors helped to draft the manuscript and in reading and approving this final version.

Competing interests

The authors declare that they have no competing interests.

Received: 14 September 2011 Accepted: 20 December 2011

Published: 20 December 2011

References

1. Burglin TR: Analysis of TALE superclass homeobox genes (MEIS, PBC, KNOX, Iroquois, TGIF) reveals a novel domain conserved between plants and animals. *Nucleic Acids Res* 1997, **25**:4173-4180.
2. Fognani C, Kilstrup-Nielsen C, Berthelsen J, Ferretti E, Zappavigna V, Blasi F: Characterization of PREP2, a paralog of PREP1, which defines a novel sub-family of the MEINOX TALE homeodomain transcription factors. *Nucleic Acids Res* 2002, **30**:2043-2051.
3. Monica K, Galili N, Nourse J, Saltman D, Cleary ML: PBX2 and PBX3, new homeobox genes with extensive homology to the human proto-oncogene PBX1. *Mol Cell Biol* 1991, **11**:6149-6157.
4. Wagner K, Mincheva A, Korn B, Lichter P, Popperl H: Pbx4, a new Pbx family member on mouse chromosome 8, is expressed during spermatogenesis. *Mech Dev* 2001, **103**:127-131.
5. Di Giacomo G, Koss M, Capellini TD, Brendolan A, Popperl H, Selleri L: Spatio-temporal expression of Pbx3 during mouse organogenesis. *Gene Expr Patterns* 2006, **6**:747-757.
6. Selleri L, Depew MJ, Jacobs Y, Chanda SK, Tsang KY, Cheah KS, Rubenstein JL, O'Gorman S, Cleary ML: Requirement for Pbx1 in skeletal patterning and programming chondrocyte proliferation and differentiation. *Development* 2001, **128**:3543-3557.
7. Toresson H, Parmar M, Campbell K: Expression of Meis and Pbx genes and their protein products in the developing telencephalon: implications for regional differentiation. *Mech Dev* 2000, **94**:183-187.
8. DiMartino JF, Selleri L, Traver D, Firpo MT, Rhee J, Warnke R, O'Gorman S, Weissman IL, Cleary ML: The Hox cofactor and proto-oncogene Pbx1 is required for maintenance of definitive hematopoiesis in the fetal liver. *Blood* 2001, **98**:618-626.
9. Pillay LM, Forrester AM, Erickson T, Berman JN, Waskiewicz AJ: The Hox cofactors Meis1 and Pbx act upstream of gata1 to regulate primitive hematopoiesis. *Dev Biol* 2010.

10. Hisa T, Spence SE, Rachel RA, Fujita M, Nakamura T, Ward JM, Devor-Henneman DE, Saiki Y, Kutsuna H, Tessarollo L, *et al*: Hematopoietic, angiogenic and eye defects in *Meis1* mutant animals. *EMBO J* 2004, **23**:450-459.
11. Moskow JJ, Bullrich F, Huebner K, Daar IO, Buchberg AM: *Meis1*, a PBX1-related homeobox gene involved in myeloid leukemia in BXH-2 mice. *Mol Cell Biol* 1995, **15**:5434-5443.
12. Nakamura T, Largaespada DA, Shaughnessy JD Jr, Jenkins NA, Copeland NG: Cooperative activation of *Hoxa* and *Pbx1*-related genes in murine myeloid leukaemias. *Nat Genet* 1996, **12**:149-153.
13. Calvo KR, Knoepfler PS, Sykes DB, Pasillas MP, Kamps MP: *Meis1a* suppresses differentiation by G-CSF and promotes proliferation by SCF: potential mechanisms of cooperativity with *Hoxa9* in myeloid leukemia. *Proc Natl Acad Sci USA* 2001, **98**:13120-13125.
14. Diaz-Blanco E, Bruns I, Neumann F, Fischer JC, Graef T, Roskopf M, Brors B, Pechtel S, Bork S, Koch A, *et al*: Molecular signature of CD34(+) hematopoietic stem and progenitor cells of patients with CML in chronic phase. *Leukemia* 2007, **21**:494-504.
15. Mann RS, Affolter M: Hox proteins meet more partners. *Curr Opin Genet Dev* 1998, **8**:423-429.
16. Moens CB, Selleri L: Hox cofactors in vertebrate development. *Dev Biol* 2006, **291**:193-206.
17. Chung EY, Liu J, Homma Y, Zhang Y, Brendolan A, Saggese M, Han J, Silverstein R, Selleri L, Ma X: Interleukin-10 expression in macrophages during phagocytosis of apoptotic cells is mediated by homeodomain proteins *Pbx1* and *Prep-1*. *Immunity* 2007, **27**:952-964.
18. Deflorian G, Tiso N, Ferretti E, Meyer D, Blasi F, Bortolussi M, Argenton F: *Prep1.1* has essential genetic functions in hindbrain development and cranial neural crest cell differentiation. *Development* 2004, **131**:613-627.
19. Penkov D, Di Rosa P, Fernandez Diaz L, Basso V, Ferretti E, Grassi F, Mondino A, Blasi F: Involvement of *Prep1* in the alpha beta T-cell receptor T-lymphocytic potential of hematopoietic precursors. *Mol Cell Biol* 2005, **25**:10768-10781.
20. Ferretti E, Villaescusa JC, Di Rosa P, Fernandez-Diaz LC, Longobardi E, Mazzieri R, Miccio A, Micali N, Selleri L, Ferrari G, Blasi F: Hypomorphic mutation of the TALE gene *Prep1* (*pKnox1*) causes a major reduction of *Pbx* and *Meis* proteins and a pleiotropic embryonic phenotype. *Mol Cell Biol* 2006, **26**:5650-5662.
21. Roschke AV, Tonon G, Gehlhaus KS, McTyre N, Bussey KJ, Lababidi S, Scudiero DA, Weinstein JN, Kirsch IR: Karyotypic complexity of the NCI-60 drug-screening panel. *Cancer Res* 2003, **63**:8634-8647.
22. Micali N, Ferrai C, Fernandez-Diaz LC, Blasi F, Crippa MP: *Prep1* directly regulates the intrinsic apoptotic pathway by controlling *Bcl-XL* levels. *Mol Cell Biol* 2009, **29**:1143-1151.
23. Allen TD, Zhu YX, Hawley TS, Hawley RG: TALE homeoproteins as HOX11-interacting partners in T-cell leukemia. *Leuk Lymphoma* 2000, **39**:241-256.
24. Kumar AR, Li Q, Hudson WA, Chen W, Sam T, Yao Q, Lund EA, Wu B, Kowal BJ, Kersey JH: A role for *MEIS1* in MLL-fusion gene leukemia. *Blood* 2009, **113**:1756-1758.
25. Geerts D, Schilderink N, Jorritsma G, Versteeg R: The role of the *MEIS* homeobox genes in neuroblastoma. *Cancer Lett* 2003, **197**:87-92.
26. Kawagoe H, Humphries RK, Blair A, Sutherland HJ, Hogge DE: Expression of *HOX* genes, *HOX* cofactors, and *MLL* in phenotypically and functionally defined subpopulations of leukemic and normal human hematopoietic cells. *Leukemia* 1999, **13**:687-698.
27. Argiropoulos B, Yung E, Humphries RK: Unraveling the crucial roles of *Meis1* in leukemogenesis and normal hematopoiesis. *Genes Dev* 2007, **21**:2845-2849.
28. Wermuth PJ, Buchberg AM: *Meis1*-mediated apoptosis is caspase dependent and can be suppressed by coexpression of *HoxA9* in murine and human cell lines. *Blood* 2005, **105**:1222-1230.
29. Fujino T, Yamazaki Y, Largaespada DA, Jenkins NA, Copeland NG, Hirokawa K, Nakamura T: Inhibition of myeloid differentiation by *Hoxa9*, *Hoxb8*, and *Meis* homeobox genes. *Exp Hematol* 2001, **29**:856-863.
30. Pennartz S, Belvindrah R, Tomiuk S, Zimmer C, Hofmann K, Conradt M, Bosio A, Cremer H: Purification of neuronal precursors from the adult mouse brain: comprehensive gene expression analysis provides new insights into the control of cell migration, differentiation, and homeostasis. *Mol Cell Neurosci* 2004, **25**:692-706.
31. Smith JE, Afonja O, Yee HT, Inghirami G, Takeshita K: Chromosomal mapping to 15q14 and expression analysis of the human *MEIS2* homeobox gene. *Mamm Genome* 1997, **8**:951-952.
32. Ferretti E, Schulz H, Talarico D, Blasi F, Berthelsen J: The PBX-regulating protein *PREP1* is present in different PBX-complexed forms in mouse. *Mech Dev* 1999, **83**:53-64.
33. Diaz VM, Bachi A, Blasi F: Purification of the *Prep1* interactome identifies novel pathways regulated by *Prep1*. *Proteomics* 2007, **7**:2617-2623.
34. Berthelsen J, Zappavigna V, Mavilio F, Blasi F: *Prep1*, a novel functional partner of *Pbx* proteins. *EMBO J* 1998, **17**:1423-1433.
35. Longobardi E, Blasi F: Overexpression of *PREP-1* in F9 teratocarcinoma cells leads to a functionally relevant increase of *PBX-2* by preventing its degradation. *J Biol Chem* 2003, **278**:39235-39241.
36. Micali N, Longobardi E, Iotti G, Ferrai C, Castagnaro L, Ricciardi M, Blasi F, Crippa MP: Down syndrome fibroblasts and mouse *Prep1*-overexpressing cells display increased sensitivity to genotoxic stress. *Nucleic Acids Res* 2010.
37. Qiu Y, Song B, Zhao G, Deng B, Makino T, Tomita Y, Wang J, Luo W, Doki Y, Aozasa K, Morii E: Expression level of Pre B cell leukemia homeobox 2 correlates with poor prognosis of gastric adenocarcinoma and esophageal squamous cell carcinoma. *Int J Oncol* 2010, **36**:651-663.
38. Zuckerman V, Wolyniec K, Sionov RV, Haupt S, Haupt Y: Tumour suppression by *p53*: the importance of apoptosis and cellular senescence. *J Pathol* 2009, **219**:3-15.

doi:10.1186/1756-9966-30-112

Cite this article as: Rosales-Aviña *et al.*: *MEIS1*, *PREP1*, and *PBX4* Are Differentially Expressed in Acute Lymphoblastic Leukemia: Association of *MEIS1* Expression with Higher Proliferation and Chemotherapy Resistance. *Journal of Experimental & Clinical Cancer Research* 2011 **30**:112.

Submit your next manuscript to BioMed Central and take full advantage of:

- Convenient online submission
- Thorough peer review
- No space constraints or color figure charges
- Immediate publication on acceptance
- Inclusion in PubMed, CAS, Scopus and Google Scholar
- Research which is freely available for redistribution

Submit your manuscript at
www.biomedcentral.com/submit

