

RESEARCH

Open Access

Spectral Karyotyping for identification of constitutional chromosomal abnormalities at a national reference laboratory

Arturo Anguiano[†], Boris T Wang[†], Shirong R Wang, Fatih Z Boyar, Loretta W Mahon, Mohamed M El Naggar, Peter H Kohn, Mary H Haddadin, Vladimira Sulcova, Adam H Sbeiti, Mervat S Ayad, Beverly J White and Charles M Strom*

Abstract

Spectral karyotyping is a diagnostic tool that allows visualization of chromosomes in different colors using the FISH technology and a spectral imaging system. To assess the value of spectral karyotyping analysis for identifying constitutional supernumerary marker chromosomes or derivative chromosomes at a national reference laboratory, we reviewed the results of 179 consecutive clinical samples (31 prenatal and 148 postnatal) submitted for spectral karyotyping. Over 90% of the cases were requested to identify either small supernumerary marker chromosomes (sSMCs) or chromosomal exchange material detected by G-banded chromosome analysis. We also reviewed clinical indications of those cases with marker chromosomes in which chromosomal origin was identified by spectral karyotyping. Our results showed that spectral karyotyping identified the chromosomal origin of marker chromosomes or the source of derivative chromosomal material in 158 (88%) of the 179 clinical cases; the identification rate was slightly higher for postnatal (89%) compared to prenatal (84%) cases. Cases in which the origin could not be identified had either a small marker chromosome present at a very low level of mosaicism (< 10%), or contained very little euchromatic material. Supplemental FISH analysis confirmed the spectral karyotyping results in all 158 cases. Clinical indications for prenatal cases were mainly for marker identification after amniocentesis. For postnatal cases, the primary indications were developmental delay and multiple congenital anomalies (MCA). The most frequently encountered markers were of chromosome 15 origin for satellited chromosomes, and chromosomes 2 and 16 for non-satellited chromosomes. We were able to obtain pertinent clinical information for 47% (41/88) of cases with an identified abnormal chromosome. We conclude that spectral karyotyping is sufficiently reliable for use and provides a valuable diagnostic tool for establishing the origin of supernumerary marker chromosomes or derivative chromosomal material that cannot be identified with standard cytogenetic techniques.

Keywords: Spectral Karyotyping, Marker Chromosome, FISH, array CGH

Introduction

Spectral karyotyping is an invaluable diagnostic tool in constitutional studies for identifying marker chromosomes and chromosomal exchanges that are not fully defined by conventional cytogenetic methods [1,2]. This is especially true in cases involving *de novo* small supernumerary marker chromosomes (sSMCs) and derivative chromosomes [3-6]. Such definitive karyotyping is

important in assessing risk for phenotypic abnormalities, especially for prenatal situations [7,8]. The ability to identify the origin of additional genetic materials is very important for providing information to couples in regard to the potential phenotypic and/or developmental effect of a *de novo* rearrangement. Similarly, in evaluation of infertility, the identification of derivative chromosomal material may shed light on the mechanism of infertility [9,10].

Although spectral karyotyping was developed more than a decade ago, few large-scale studies have assessed

* Correspondence: Charles.M.Strom@QuestDiagnostics.com

† Contributed equally

Quest Diagnostics Nichols Institute, San Juan Capistrano, CA 92690, USA

its ability to further resolve constitutional chromosomal rearrangements initially identified with conventional GTG-banding (G-banding) cytogenetic analysis. The primary aim of this study was to assess the utilization of spectral karyotyping for resolving chromosome abnormalities that are not well delineated by conventional G-banding.

Materials and methods

Spectral Karyotyping Analysis of Abnormalities not resolved with Conventional Chromosome Analysis

We reviewed the results of spectral karyotyping and confirmatory FISH testing performed on 179 consecutive clinical specimens (31 prenatal and 148 postnatal specimens) submitted to our national reference laboratory. In both prenatal and postnatal settings, the most common indication for spectral karyotyping analysis was the presence of chromosomal material not defined by conventional G-banding. Chromosomal abnormalities included unidentified marker chromosomes, additional rearranged material of unknown origin, ring chromosomes, and various complex rearrangements.

Spectral Karyotyping Assay Procedure

The spectral karyotyping assay protocol recommended by the vendor (Applied Spectral Imaging, Carlsbad, CA) was followed. Emphasis was placed on the examination of telomeric regions. Spectral karyotyping was performed on metaphase chromosomes prepared for routine cytogenetic study from peripheral blood, amniotic fluid, and chorionic villus sampling (CVS) using standard hybridization procedures [1]. Equipment included the SKY Vision Cytogenetic Workstation with a Spectra-Cube[®] and Sagnac interferometer, CCD camera for image capture, and a computer system for image analysis and pseudo-color karyotyping (Applied Spectral Imaging). The resulting multicolor images were examined with a 60x plan apochromatic objective followed by Kodak color print documentation of pseudo-colored karyotypes. All spectral karyotyping findings were confirmed by FISH using appropriate probes.

Results

Most of the 179 clinical samples were submitted to further delineate additional material detected on G-banded analysis. Overall, spectral karyotyping identified the origins of the rearranged materials (including marker chromosomes) in 88% (158/179) of these cases; rates were similar in prenatal and postnatal cases (84% vs. 89%; see Table 1). The abnormalities included supernumerary marker chromosome (75 cases), additional material on a rearranged chromosome (71 cases), and ring chromosome (13 cases); a variety of complex rearrangements were observed in the remaining 20 cases. Spectral

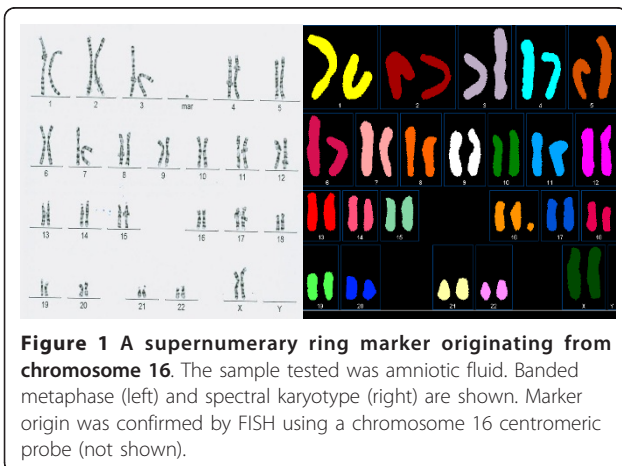
karyotyping identified the origin of the additional material in 77% to 100% of prenatal and postnatal samples, depending on the type of rearrangement involved. Notably, spectral karyotyping resolved the G-banding ambiguities in 19 of the 20 cases (95%) with complex rearrangements. Most cases in which the origin could not be identified were characterized by either a small marker chromosome present at a very low level of mosaicism (< 10%), or by a very small abnormality (data not shown). The lower practical limit of detection by spectral karyotyping appears to be within a single euchromatic band at a 500 band-level of resolution, or 6-10 Mb in size. Figures 1, 2, 3 and 4 illustrate the use of spectral karyotyping in a variety of selected cases with ambiguous GTG-banding results. Table 2 listed clinical indications of 41 cases referred for further characterization of sSMC and also other rearrangements by spectral karyotyping. Clinical indications for prenatal cases were mainly for marker identification after amniocentesis. For postnatal cases, the primary indications were developmental delay and multiple congenital anomalies (MCA). The most frequently encountered markers were of chromosome 15 origin for satellited chromosomes, and chromosomes 2 and 16 for non-satellited chromosomes. We were able to obtain pertinent clinical information for 47% (41/88) of cases with an identified abnormal chromosome.

Discussion

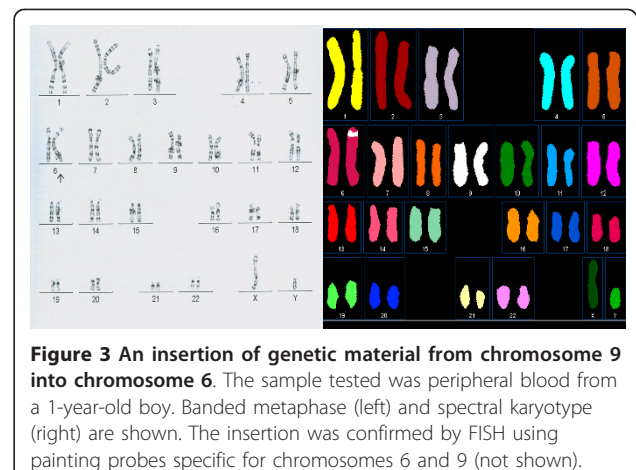
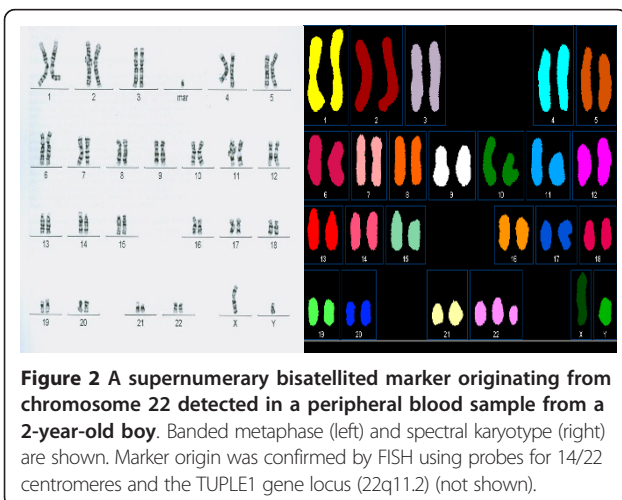
The findings of this study demonstrate the accuracy and usefulness of spectral karyotyping in identifying derivative constitutional chromosomal material. Our findings clearly demonstrate the clinical usefulness of spectral karyotyping for resolving the origin of a marker chromosome or rearranged chromosomal material when G-banding analysis does not. Once the source has been identified by spectral karyotyping, confirmatory testing using FISH probes or family studies should follow. In our series, these confirmatory studies verified informative spectral karyotyping results in all 158 cases. Therefore, if further data support the accuracy of spectral karyotyping, follow-up FISH testing may not always be needed for confirmation. In comparison with array CGH, spectral karyotyping is considered more valuable when it is used to identify polyploidy (e.g., 69,XXX), the origin of a marker chromosome in metaphase, or balanced rearrangements such as translocations, provided that the size of the subtle rearrangement is at least one-band size at a 500 band-level of resolution [9,11]. Spectral karyotyping may also be advantageous over array CGH when a low level of mosaicism (< 20%) is suspected, when a complex karyotype is observed on a conventional G-banded study, or when a DNA sample is not attainable for array CGH as a part of the follow-

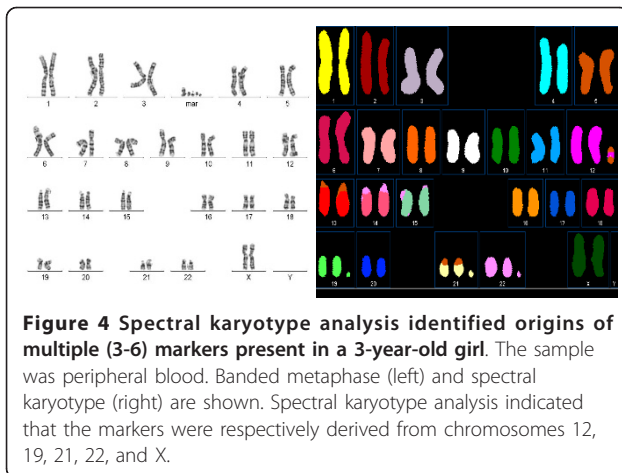
Table 1 Spectral Karyotype Findings in 31 Prenatal Cases and 148 Postnatal Cases with Abnormal Karyotypes

Cytogenetic (GTG-banded) Abnormality	Spectral Karyotype Findings		
	Positive, n	Inconclusive, n	Approximate Sensitivity, %
Supernumerary Marker			
Prenatal (n = 13)	10	3	77
Postnatal (n = 62)	48	14	77
Additional genetic material			
Prenatal (n = 6)	5	1	83
Postnatal (n = 65)	63	2	97
Ring chromosome			
Prenatal (n = 4)	4	0	100
Postnatal (n = 9)	9	0	100
Complex rearrangements			
Prenatal (n = 8)	7	1	88
Postnatal (n = 12)	12	0	100
=====	=====	=====	=====
Total			
Prenatal (N = 31)	26	5	84
Postnatal (N = 148)	132	16	89



up process [12,13]. However, unlike array CGH, spectral karyotyping has limited ability to accurately measure the size of a chromosomal rearrangement including sSMCs and to precisely determine the chromosome regions or breakpoints involved [9]. As such, spectral karyotyping will not allow for an accurate correlation between a chromosomal rearrangement and a specific phenotype. It is through the effort made by Liehr *et al.* at Jena University of Germany since 2004 that a comprehensive sSMC homepage <http://www.uniklinikum-jena.de/fish/sSMC.html> has become available as an important reference source for the research community [14]. This homepage is a regularly updated, freely available online database with a focus to collect all available reported small supernumerary marker chromosomes (sSMCs) for





future prognosis and as a helpful tool in genetic counseling.

In the 41 referral cases available for collection of further clinical information in our series, clinical indications were different between pre- and post-natal cases. While clinical indications were mainly for marker characterization after amniocentesis among prenatal cases, developmental delay and multiple congenital anomalies were the two major indications in our post-natal cases. Our data showed that the most frequently encountered markers were of chromosome 15 origin for satellited chromosomes, and chromosomes 2 and 16 for non-satellited chromosomes. These data are consistent with those published by Liehr et al [14]. Due to our unique setting as a national reference laboratory, we were only able to obtain pertinent clinical information for 47% (41/88) of cases with an identified abnormal chromosome.

Besides spectral karyotyping, there are many other approaches that are available for sSMC characterization. These approaches include centromere-specific multicolor FISH (cenM-FISH), subcentromere-specific multicolor (subcenM-FISH), microdissection and reverse FISH, microdissection and array CGH, or array CGH alone [14-18]. For other complex rearrangements, many possibilities are also accessible for further delineation after the chromosomal origin has been identified. These include BAC-FISH and FISH-banding methodologies such as multicolor banding fluorescence in situ hybridization (MCB/m-banding) up to array-CGH (microarray-based comparative genomic hybridization) in case of unbalanced rearrangements [16,18].

In recent years, array-CGH has attracted a great deal of research interest and is now considered an efficient and sensitive technique for detecting genome-wide copy number alterations at high resolution. It has increasingly replaced the role of spectral karyotyping in the

diagnostic arena to identify the origin of sSMCs and other rearrangements, and also to characterize complex sSMCs. However, spectral karyotyping, to our belief, will still hold its unique value in the market place as a useful diagnostic tool, especially in identifying complex rearrangements in metaphase.

The data presented here and in the literature do not support the use of spectral karyotyping as a primary diagnostic tool in prenatal situations, as the risk of misdiagnosis is still a major concern [7,8]. Yaron et al. tested the application of spectral karyotyping for characterizing *de novo* small supernumerary marker chromosomes (sSMCs) during prenatal diagnosis [7]. In this series, the evaluation of ring chromosomes and non-satellited SMCs benefited greatly from the additional analysis; however, spectral karyotyping did not provide further information for characterization in two cases with bisatellited SMCs [7]. Besides, spectral karyotyping results, unlike array CGH, often need to be refined by the use of FISH probes. Therefore, Heng et al. proposed a strategy that combines G-banding, spectral karyotyping and FISH for pre- and post-natal chromosomal analysis [11]. This strategy involves routine G-banding for the initial evaluation, but any marker chromosomes or complex rearrangements thus detected are further characterized by spectral karyotyping and then verified with FISH. Our findings provide evidence that this strategy is efficient for pre- and postnatal analysis. In this regard, Liehr et al. (2009) also proposed a different approach that uses only FISH methodologies to handle sSMC cases in prenatal situations [14].

In the foreseeable future, spectral karyotyping in conjunction with array CGH will continue to be applied not only in constitutional chromosome studies, but also in cancer cytogenetic studies for identification of complex and cryptic rearrangements [19]. Knowing that chromosomal changes in cancer are often considered a useful reference for therapy design, these chromosomal changes must be elucidated as precisely as possible. To provide better care for cancer patients, spectral karyotyping in combination with other molecular cytogenetic methodologies such as FISH and array CGH should be useful for supplementing G-banding analysis for the identification of significant prognostic rearrangements.

In conclusion, our findings describe the validation of spectral karyotyping in a national-wide commercial cytogenetics laboratory and its successful introduction into the diagnostic arena. This technology provides a valuable diagnostic tool for establishing the origin of small supernumerary marker chromosomes (sSMCs) and derivative chromosomal material that cannot be identified with standard techniques.

Table 2 Clinical indications of 41 cases referred for spectral karyotyping

Case number	Sex	Age	Type of Study	Result	Clinical indication
F0414116	M	Prenatal	Prenatal (AF)	der(1)	Supernumerary mosaic marker found elsewhere at amniocentesis, Parental chromosome studies reported as normal (studied elsewhere)
F0425680	F	Prenatal	Prenatal (CVS)	der(2)	Advanced maternal age
F0439968	M	1Y	Neonatal	r(2)	Developmental delay
F0533491	F	10Y	Postnatal	der(2)	Short stature, Pituitary dwarfism
F0549217	M	19M	Postnatal	der(2)	Delayed milestones, Multiple congenital anomalies
F0613262	M	2Y	Postnatal	der(3)	Developmental delay
F0732043	M	2Y	Postnatal	der(3)	Delayed milestones
F043725	M	2Y	Postnatal	der(7)	Prenatal ultrasound with an unspecified kidney abnormality; AF study with a result of 47,XY+mar[3]/46,XY[27]
F0451268	M	1Y	Neonatal	r(8)	47,XY,+r/46,XY (diagnosed elsewhere)
F0633932	M	2Y	Postnatal	der(9)	Developmental delay
F0713569	F	6M	Neonatal	i(9)(p10)	Macroglossia
F0716379	F	11Y	Postnatal	der(9)	Velocardiofacial (VCF) phenotype; NF1 diagnosis; Congenital cataract, Developmental delay, Abnormal aortic valve
F0646031	F	Prenatal	Prenatal (AF)	der(12)	Advanced maternal age
F0445519	M	2Y	Postnatal	der(14 or 22)	Developmental delay
F0519414	F	12Y	Postnatal	der(14 or 22)	Ataxia; Rule out 47,XXX
F058133	M	Prenatal	Prenatal (AF)	der(15)	Advanced maternal age; Amniocentesis study had a result of 47,XY,+mar[8]pat/46,XY[2]
F0554133	F	12Y	Postnatal	der(15)	Short stature
F0621647	F	12Y	Postnatal	r(15)	Previous study performed elsewhere
F0642559	F	3Y	Postnatal	psu idic (15)	Rule out SRY deletion
F0658799	M	6Y	Postnatal	idic(15)	Pervasive developmental disorder
F077829	M	25Y	Postnatal	der(15)	Infertility
F047204	F	33Y	Postnatal	r(16)	Multiple miscarriages
F0548089	F	2M	Neonatal	der(16)	Prenatal karyotype of 47,XX,+mar[7]/46,XX[12] (performed elsewhere)
F0616779	F	2Y	Postnatal	r(16)	Seizures
F0751841	F	Prenatal	Prenatal (AF)	der(16)	Advanced maternal age
F04635	F	7Y	Postnatal	der(18)	Previous blood study showed mosaicism for a small marker chromosome
F0528563	M	2M	Neonatal	der(18)	Multiple congenital anomalies; A ring chromosome detected at prenatal diagnosis
F077572	F	Prenatal	Prenatal (AF)	der(18)	Mosaic fetal karyotype of 47,XX,+mar[8]/46,XX[7] reported elsewhere; Advanced maternal age
F0534481	F	35D	Neonatal	der(19)	Amniotic fluid study had a karyotype of 47,XX,+mar
F0628560	F	2Y	Postnatal	r(19)	Multiple congenital anomalies
F0642312	F	12Y	Postnatal	der(19)	Rule out Fragile x syndrome
F0549359	N/G	10Y	Postnatal	der(20)	Developmental delay, Autism
F0819257	F	8Y	Postnatal	der(20)	Mental retardation/developmental delay, Trigonocephaly
F067630	F	11Y	Postnatal	r(21)	Dermatitis, Acquired acanthosis nigricans
F0535997	M	35Y	Postnatal	der(22)	Unspecified anterior pituitary hyperfunction, Chronic lymphocytosis, Thyroiditis, Hirsutism, Celiac disease, Disorders of iron metabolism.
F0560040	F	27Y	Postnatal	dic(22)	Bone marrow aspirate: agranulocytosis, neutropenia and borderline anemia; Blood specimen: agranulocytosis; To rule out a constitutional marker chromosome
F0636127	M	1Y	Postnatal	der(22)	Developmental delay
F0636122	M	N/G	Postnatal	der(22)	Rule out Trisomy 13
F0646601	F	11Y	Postnatal	idic(22)	Delayed milestones, Multiple congenital anomalies
F0845840	F	1D	Neonatal	der(22)	Microcephaly
F0851097	F	20Y	Postnatal	der(22)	Congenital heart defect

Acknowledgements

The authors thank Jeff Radcliff (Quest Diagnostics) for assistance in editorial review of the manuscript.

Authors' contributions

AA supervised the assay implementation and its performance, supervised molecular cytogenetic studies, drafted and revised the manuscript. BTW reviewed and analyzed the spectral karyotyping data; drafted and finalized the manuscript. SRW supervised the molecular cytogenetic studies. FZB supervised the molecular cytogenetic studies and made critical comments on the drafted manuscript. LOM collected further clinical information and constructed Table 2. MME reviewed cases referred for spectral karyotyping analysis. PHK reviewed cases referred for spectral karyotyping analysis. MHH reviewed cases referred for spectral karyotyping analysis. VS carried out the molecular cytogenetic studies. AHS supervised the molecular cytogenetic studies. MSA supervised the molecular cytogenetic studies. BJW reviewed cases referred for spectral karyotyping analysis. CMS corresponding author; supervised the overall molecular cytogenetic studies and drafted the initial manuscript. All authors have read and approved the final manuscript.

Competing interests

The authors declare that they have no competing interests.

Received: 13 June 2010 Accepted: 16 January 2012

Published: 16 January 2012

References

- Schrock E, du Manoir S, Veldman T, Schoell B, Wienberg J, Ferguson-Smith MA, Ning Y, Ledbetter DH, Bar-Am I, Soenksen D, Garini Y, Ried T: **Multicolor spectral karyotyping of human chromosomes.** *Science* 1996, **273**(5274):494-497.
- Schrock E, Veldman T, Padilla-Nash H, Ning Y, Spurbek J, Shaffer JS, Papenhausen P, Kozma C, Phelan MC, Kjeldsen E, Schonberg SA, O'Brien P, Biesecker L, du Manoir S, Ried T: **Spectral karyotyping refines cytogenetic diagnostics of constitutional chromosomal abnormalities.** *Hum Genet* 1997, **101**:255-262.
- Huang B, Ning Y, Lamb AN, Sandlin CJ, Jamehdor M, Ried T, Bartley J: **Identification of an unusual marker chromosome by spectral karyotyping.** *Am J Med Genet* 1998, **80**(4):368-372.
- Haddad BR, Schrock E, Meck J, Cowan J, Young H, Ferguson-Smith MA, du Manoir S, Ried T: **Identification of de novo chromosomal markers and derivatives by spectral karyotyping.** *Hum Genet* 1998, **103**:619-625.
- Phelan MC, Blackburn W, Rogers RC, Crawford EC, Cooley NR Jr, Schrock E, Ning Y, Ried T: **FISH analysis of a complex chromosome rearrangement involving nine breakpoints on chromosomes 6, 12, 14 and 16.** *Prenat Diagn* 1998, **18**(11):1174-1180.
- Peschka B, Leygraaf J, Hansmann D, Hansmann M, Schrock E, Ried T, Engels H, Schwanz G, Schubert R: **Analysis of a de novo complex chromosome rearrangement involving chromosomes 4, 11, 12 and 13 and eight breakpoints by conventional cytogenetic, fluorescence in situ hybridization and spectral karyotyping.** *Prenat Diagn* 1999, **19**(12):1143-1149.
- Yaron Y, Carmon E, Goldstein M, Voskoboinik N, Ochshorn Y, Gelman-Kohan Z, Orr-Urtreger A: **The clinical application of spectral karyotyping (SKY) in the analysis of prenatally diagnosed extra structurally abnormal chromosomes.** *Prenat Diagn* 2003, **23**(1):74-79.
- Guanciali-Franchi P, Calabrese G, Morizio E, Fantasia D, Colosimo A, Rinaldi MM, Cristini L, Simonelli A, Lonardo F, Turci A, Zatterale A, Lagana C, Stuppia L, Sabatino G, Palka G: **Identification of 14 rare marker chromosomes and derivatives by spectral karyotyping in prenatal and postnatal diagnosis.** *Am J Med Genet* 127A(2):144-148.
- Lee C, Gisselsson D, Jin C, Nordgren A, Ferguson DO, Blennow E, Fletcher JA, Morton CC: **Limitations of chromosome classification by multicolor karyotyping.** *Am J Hum Genet* 2001, **68**(4):1043-1047.
- Mergenthaler-Gatfield S, Holzgreve W, Hahn S: **Spectral karyotyping (SKY): applications in prenatal diagnostics.** *Methods Mol Bio* 2008, **444**:3-26.
- Heng HH, Ye CJ, Yang F, Ebrahim S, Liu G, Bremer SW, Thomas CM, Ye J, Chen TJ, Tuck-Muller C, Yu JW, Krawetz SA, Johnson A: **Analysis of markers or complex chromosomal rearrangements present in pre- and post-natal karyotypes utilizing a combination of G-banding, spectral karyotyping and fluorescence in situ hybridization.** *Clin Genet* 2003, **63**(5):358-367.
- Manning M, Hudgins L: **Use of array-based technology in the practice of medical genetics.** *Genet Med* 2007, **9**(9):650-653.
- Shaffer LG, Beaudet AL, Brothman AR, Hirsch B, Levy B, Martin CL, Mascarello JT, Rao KW, A Working Group of the Laboratory Quality Assurance Committee of the American College of Medical Genetics: **Microarray analysis for constitutional cytogenetic abnormalities.** *Genet Med* 2007, **9**(9):654-662.
- Liehr T, Ewers E, Kosyakova N, Klaschka V, Rietz F, Wagner R, Weise A: **Handling small supernumerary marker chromosomes in prenatal diagnostics.** *Expert Rev Mol Diagn* 2009, **9**(4):317-324.
- Henegariu O, Bray-Ward P, Artan S, Vance GH, Qumsyieh M, Ward DC: **Small marker chromosome identification in metaphase and interphase using centromeric multiplex FISH (CM-FISH).** *Lab Invest* 2001, **81**(4):475-481.
- Liehr T, Weise A, Hinreiner S, Mkrtychyan H, Mrasek K, Kosyakova N: **Characterization of chromosomal rearrangements using multicolor-banding (MCB/m-band).** *Methods Mol Biol* 2010, **659**:231-238.
- Sheth F, Andrieux J, Ewers E, Kosyakova N, Weise A, Sheth H, Romana SP, LeLorc'h M, Delobel B, Theisen O, Liehr T, Nampoothiri S, Sheth J: **Characterization of sSMC by FISH and molecular techniques.** *Eur J Med Genet* 2011, **54**(3):247-255.
- Tsuchiya KD, Opheim KE, Hannibal MC, Hing AV, Glass IA, Raff ML, Norwood T, Torchia BA: **Unexpected structural complexity of supernumerary marker chromosomes characterized by microarray comparative genomic hybridization.** *Mol Cytogenet* 2008, **1**:7.
- Hilgenfeld E, Montagna C, Padilla-Nash H, Stapleton L, Heselmeyer-Haddad K, Ried T: **Spectral karyotyping in cancer cytogenetics.** *Methods Mol Med* 2002, **68**:29-44.

doi:10.1186/1755-8166-5-3

Cite this article as: Anguiano *et al.*: Spectral Karyotyping for identification of constitutional chromosomal abnormalities at a national reference laboratory. *Molecular Cytogenetics* 2012 **5**:3.

Submit your next manuscript to BioMed Central and take full advantage of:

- Convenient online submission
- Thorough peer review
- No space constraints or color figure charges
- Immediate publication on acceptance
- Inclusion in PubMed, CAS, Scopus and Google Scholar
- Research which is freely available for redistribution

Submit your manuscript at
www.biomedcentral.com/submit

