

Short report

Open Access

EBV-positive diffuse large B-cell lymphoma in a human T-lymphotropic virus type I carrier

Brady Beltran¹, Renzo Salas¹, Pilar Quiñones², Domingo Morales², Fernando Hurtado¹, Esther Cotrina³, Luis Riva¹ and Jorge Castillo*⁴

Address: ¹Department of Oncology and Radiotherapy, Edgardo Rebagliati Martins Hospital, Lima, Peru, ²Department of Pathology, Edgardo Rebagliati Martins, Lima, Peru, ³Nursing Department, Edgardo Rebagliati Martins, Lima, Peru and ⁴The Warren Alpert Medical School of Brown University, Division of Hematology and Oncology, The Miriam Hospital, Providence, RI, USA

Email: Brady Beltran - bgrady@hotmail.com; Renzo Salas - renzosalas@hotmail.com; Pilar Quiñones - mpilarquinones_hempath@yahoo.es; Domingo Morales - dmoralesluna@yahoo.com; Fernando Hurtado - fernanhur@terra.com.pe; Esther Cotrina - bgrady@hotmail.com; Luis Riva - luisalbertorive@gmail.com; Jorge Castillo* - jcastillo@lifespan.org

* Corresponding author

Published: 6 July 2009

Received: 4 March 2009

Infectious Agents and Cancer 2009, **4**:10 doi:10.1186/1750-9378-4-10

Accepted: 6 July 2009

This article is available from: <http://www.infectagentscancer.com/content/4/1/10>

© 2009 Beltran et al; licensee BioMed Central Ltd.

This is an Open Access article distributed under the terms of the Creative Commons Attribution License (<http://creativecommons.org/licenses/by/2.0>), which permits unrestricted use, distribution, and reproduction in any medium, provided the original work is properly cited.

Abstract

The development of B-cell lymphomas has been seldom described in HTLV-I carriers. We present the case of an elderly Peruvian HTLV-I carrier who was diagnosed with EBV-positive diffuse large B-cell lymphoma. Despite an initial good response to therapy, patient died during treatment due to fatal *Pneumocystis jirovecii* pneumonia. EBV infection is characterized by B-cell lymphotropism and selective immunodeficiency. HTLV-I, on the other hand, induces T-cell dysfunction and B-cell proliferation. Finally, immunosenescence is characterized by T-cell dysregulation, decreased apoptosis and cytokine upregulation. In this elderly patient, the combination of EBV and HTLV-I coinfection and immunosenescence may have played a role in the development of this aggressive diffuse large B-cell lymphoma. Furthermore, the immunodeficiency caused by the viral infections and chemotherapy may have played a role in developing life-threatening infectious complications.

Findings

The Epstein Barr virus (EBV) was the first described oncovirus, which has been associated with the development of a variety of lymphoproliferative disorders, such as Burkitt [1], primary CNS [2], NK/T-cell [3], plasmablastic [4] and Hodgkin lymphoma [5]. EBV infection occurs early in childhood, and approximately 90 to 95% of adults worldwide are EBV-seropositive. EBV expression has also been reported in patients with diffuse large B-cell lymphoma (DLBCL) [6]. DLBCL is the most common variant of non-Hodgkin lymphoma in the United States (US) and accounts for approximately 25–30% of the cases [7]. In Peru, DLBCL accounts for up to 45% of all lymphomas

and, akin to Asian countries, there is high incidence of T-cell lymphomas and low incidence of follicular lymphomas [8]. On the other hand, the human T-lymphotropic virus type 1 (HTLV-1) is a retrovirus and is the pathogenic agent of adult T-cell lymphoma/leukemia (ATLL) and other diseases [9]. HTLV-1 is endemic in Japan, the Melanesian Islands, the Caribbean, South America, the Middle East and parts of Africa. The prevalence of HTLV-1 in Europe and the US is lower than 1%. In Peru, it is estimated that up to 3% of the healthy adult population carry HTLV-1 [10]. The interaction of these two oncoviruses, EBV and HTLV-1, has seldom been reported in the medical literature.

The case is an 85-year-old Peruvian man with a past medical history of hypertension, who presented with a seven-week history of bilateral cervical node enlargement. The patient denied weight loss, drenching night sweats or fever. Physical examination showed an elderly individual with good performance status (ECOG 1) and non-tender bilateral cervical lymphadenopathy. No hepatosplenomegaly was found. CT scans of the neck, chest, abdomen and pelvis did not reveal other sites of disease. Complete blood count revealed 6,900 leucocytes per mm³, with 52% neutrophils and 28% lymphocytes; the white blood cell morphology was unremarkable. Hemoglobin was 13.6 g/dl and platelets 245,000 per mm³. Serum lactate dehydrogenase (LDH) levels were within normal limits. Renal and hepatic function tests and immunoglobulin A, G, M and E quantification were within normal ranges. The patient was seropositive to HTLV-1 using Western Blot testing and was seronegative for the Human Immunodeficiency Virus (HIV). Hepatitis B and C and Cytomegalovirus viral capsid antigen (CMV VCA) IgM antibodies were not detected. EBV nuclear antigen IgG was positive, this pattern is characteristic of past EBV infection. An excisional biopsy from a left cervical lymph node showed a diffuse, large-cell B-cell morphology. Bone marrow aspiration and biopsy revealed a normocellular marrow showing trilineage hematopoiesis, without evidence of lymphoma or other morphological abnormalities.

Automated immunohistochemistry studies were performed on paraffin-embedded tissue sections. The tumor cells were positive for CD20 (Dako, Carpinteria, CA; dilution 1:100; Figure 1), PAX5 (Santa Cruz Biotechnology, Santa Cruz, CA; dilution 1:100) and MUM1 (Santa Cruz Biotechnology; dilution 1:200; Figure 2) and negative for

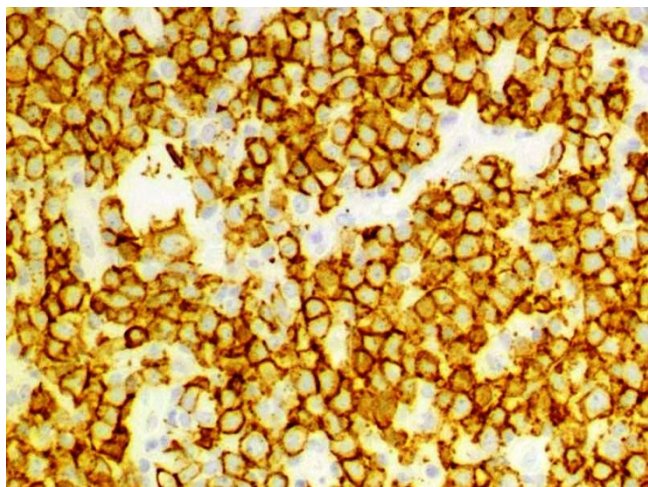


Figure 1
Immunohistochemical expression of CD20. CD20 is a pan-B-cell marker, demonstrating the B-cell lineage of this lymphoma (100×)

CD10 (Novocastra; Newcastle upon Tyne, UK; dilution 1:10), BCL-6 (Dako; dilution 1:10), CD30 (Novocastra; dilution 1:100) and LMP-1 (Dako; dilution 1:100). Automated chromogenic in situ hybridization (CISH) for EBER was performed according to the manufacturer's protocol (Dako), and showed positive nuclear expression in tumoral cells (Figure 3).

Before treatment, written consent was obtained from the patient, who was then defined as stage IIA DLBCL with a low-risk International Prognostic Index (IPI) score of 1 out of 5 (i.e. age older than 60 years). Treatment was started with cyclophosphamide, doxorubicin, vincristine and prednisone (CHOP) every 21 days with 25% dose-reduction of cyclophosphamide and doxorubicin with granulocyte-colony stimulating factor (G-CSF) support given patient's age. Four cycles of dose-reduced CHOP were administered. The patient achieved a complete response by radiologic criteria after the fourth cycle of treatment. Before the fifth cycle, the patient developed an interstitial pneumonia with increased serum LDH levels. Pneumocystis jirovecii pneumonia (PJP) was confirmed by immunofluorescent staining. Serology for Legionella, Chlamydia and Mycoplasma were negative. The patient died in the Intensive Care Unit 25 days after onset of PJP, 5 months after his lymphoma diagnosis.

EBV is a herpesvirus with demonstrated B-cell lymphotropism. EBV infection starts by attachment of the virus to the CD21 antigen; this initial step prepares the B-lymphocyte for EBV infection and is characterized by increased production of IL-6 and mRNA along with blastic transformation and mobilization of calcium. EBV is

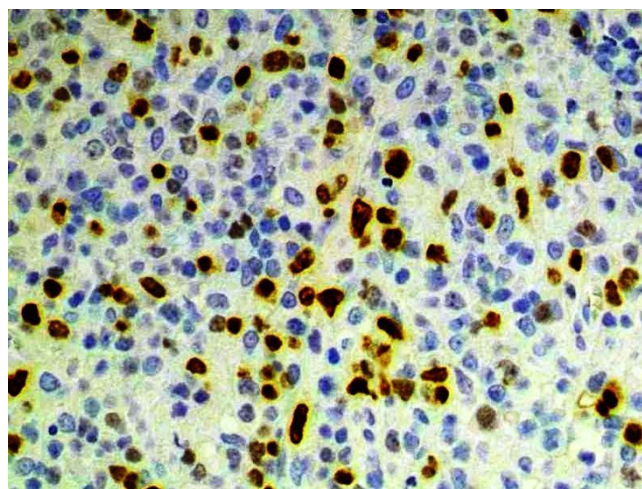


Figure 2
Immunohistochemical expression of MUM1. MUM1 is a plasma cell marker and, in DLBCL, is consistent with a non-germinal center subtype. DLBCL with a non-germinal center profile have been associated with worse survival (100×)

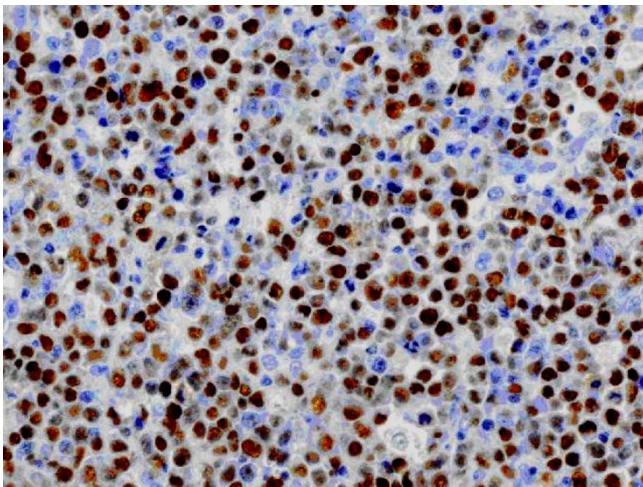


Figure 3
Immunohistochemical detection of EBV-encoded RNA (EBER). Nuclear expression is demonstrated through automated chromogenic in situ hybridization (75×)

then inserted into the nucleus where it, episomally, acquires a circle-shaped configuration. EBV nuclear antigens (EBNA-LP, -1, -2 and -3) are the first to be produced after infection; these products are essential for immortalization of the cell and upregulation of the expression of other molecules and genes such as the latent membrane proteins (LMP-1 and -2). EBNAs also upregulate *c-myc*, which is a well-known human oncogene associated with cell proliferation. LMPs increase expression of *BCL-2* and drive the cell into a latent state, which is maintained by the production of EBV-encoded RNA (EBER-1 and -2). In this way, EBV-infected B-cells enter the resting phase avoiding immunosurveillance but, due to their activated phenotype, more prone to develop secondary oncogenic changes [11]. In the present case, the serologic studies are consistent with a prior EBV infection and the immunohistochemical studies showed expression of EBER. The presence of EBNA-2 was observed in 28% of the cases of age-related EBV-associated lymphoproliferative disorder reported by Oyama and colleagues [12], which is indicative of a type III EBV latency, similar to the one observed in some cases of HIV-associated [13] and post-transplant lymphoproliferative disorders [14]. Genetic factors could also play a role in the development of EBV-associated lymphoma; it has been suggested that a genetically determined susceptibility, possibly based on certain HLA types, results in an abnormal response to primary EBV infection in certain parts of Asia [15]. These variations in HLA phenotype may provide a basis for the higher frequency of EBV-positive tumors among Asians. In addition, a recent study from Japan has shown that patients with EBV-associated NK/T-cell lymphomas, nasal type, have a low frequency of the HLA-A*0201 allele, suggesting the

importance of this allele in cytotoxic T-lymphocyte responses [16].

HTLV-1 is a deltaretrovirus that infects a wide variety of cells, such as lymphocytes, monocytes and fibroblasts by virtue of its receptor, a commonly expressed transporter of glucose [17]. HTLV-1 induces a higher rate of production of infected cells rather than replicating itself, unlike HIV. A first step is to produce viral-associated proteins such as Tax, which is encoded in the pX region of the viral genome. Tax increases proliferation of virus-infected cells by accelerating all the phases of the cell cycle and renders the affected cells tolerant to a series of genetic and epigenetic changes [18]. The expression of Tax wears out as cells acquire the ability to proliferate independently. Due to its prolonged latency period of 40 to 60 years, HTLV-1 infected cells are more susceptible to acquire malignant phenotypes in a multistep process. Previous studies have indicated that the frequency of primary malignant neoplasms in HTLV-1 carriers is higher than in HTLV-1 seronegative non-Hodgkin lymphoma cases [19]. HTLV-1 infection is strongly associated to the development of ATLL and several Peruvian studies on clinical characteristics and outcomes of patients with ATLL have been reported [20]. Although HTLV-1 has not been associated with the development of B-cell lymphomas, HTLV-1 carriers with B-cell lymphoma tend to have a worse prognosis [21]. Theoretically, chronic HTLV-1 infection can cause T-cell dysfunction and B-cell proliferation inducing a particular state of immunosuppression favoring lymphomagenesis.

As people ages, their immune systems do not respond adequately to external pathogens or new antigens, such as immunizations or cancer. T-lymphocytes are greatly affected by this immune dysregulation state called immunosenescence since the number of naïve T-cells decrease in peripheral blood and lymph nodes [22], the distribution of T-cell population is altered [23] and the T-cell receptor repertoire becomes more limited [24]. The presence of persistent infections, such as EBV or HTLV-1 or other persistent antigens, such as cancer will also induce a phenomenon called immune exhaustion [25]. Other immunological changes associated with age include decrease in apoptosis [26] and elevation of levels of proinflammatory molecules [27]. This could potentially explain the increased incidence of cancers in the elderly. Furthermore, the detection of a type III EBV latency pattern speaks of a severe immunosuppression that could be partially explained by chronic HTLV-1 infection and/or immunosenescence. This theoretical relationship is currently unclear but plausible. To date, there are very few cases reporting the emergence of lymphoma in patients with coinfection by EBV and HTLV-1 [28-30].

Likely, HTLV-1 infection will cause chronic immunosuppression and activate B-cell proliferation, favoring the development of EBV infection, which in turn will prepare

the host for the development of B-cell lymphoma portending a worse prognosis. It seems intuitive that a patient with a combination of severe immunological impairment due to EBV and HTLV-1 infections, immunosenescence and chemotherapy would develop life-threatening opportunistic infections, although the occurrence of PJP in HTLV-1 carriers has seldom been reported in the medical literature [31,32]. Further research is needed to better understand the interaction between EBV and HTLV-1 in lymphomagenesis.

Competing interests

The authors declare that they have no competing interests.

Authors' contributions

BB, RS, FH, EC and LR provided clinical care to patient. PQ and DM carried out pathological studies. BB and JC prepared the manuscript. All the authors read and approved the final manuscript.

References

- Brady G, MacArthur GJ, Farrell PJ: **Epstein-Barr virus and Burkitt lymphoma.** *J Clin Pathol* 2007, **60**:1397-1402.
- Yu GH, Montone KT, Frias-Hidvegi D, Cajulis RS, Brody BA, Levy RM: **Cytomorphology of primary CNS lymphoma: review of 23 cases and evidence for the role of EBV.** *Diagn Cytopathol* 1996, **14**:114-120.
- Siu LL, Chan JK, Kwong YL: **Natural killer cell malignancies: clinicopathologic and molecular features.** *Histol Histopathol* 2002, **17**:539-554.
- Castillo J, Pantanowitz L, Dezube BJ: **HIV-associated plasmablastic lymphoma: lessons learned from 112 published cases.** *Am J Hematol* 2008, **83**:804-809.
- Pallesen G, Hamilton-Dutoit SJ, Rowe M, Young LS: **Expression of Epstein-Barr virus latent gene products in tumour cells of Hodgkin's disease.** *Lancet* 1991, **337**:320-322.
- Park S, Lee J, Ko YH, Han A, Jun HJ, Lee SC, Hwang IG, Park YH, Ahn JS, Jung CW, et al.: **The impact of Epstein-Barr virus status on clinical outcome in diffuse large B-cell lymphoma.** *Blood* 2007, **110**:972-978.
- Swerdlow S, Campo E, Harris N, Jaffe E: *WHO Classification of Tumours of Haematopoietic and Lymphoid Tissues* 4th edition. Lyon, France: International Agency for Research on Cancer; 2008.
- Beltran B, Morales D, Quinones P, Salas A, Riva L, Carrasco A: **Distribution and Pathology Characteristics of Non Hodgkin Lymphoma in Peru: A Study of 1014 Cases Using WHO Classification of Lymphoid Neoplasm.** *ASH Annual Meeting Abstracts* 2007, **110**:4419.
- Ohshima K, Kikuchi M, Masuda Y, Sumiyoshi Y, Eguchi F, Mohtai H, Takeshita M, Kimura N: **Human T-cell leukemia virus type I associated lymphadenitis.** *Cancer* 1992, **69**:239-248.
- Alarcon JO, Friedman HB, Montano SM, Zunt JR, Holmes KK, Quinlan GV Jr: **High endemicity of human T-cell lymphotropic virus type I among pregnant women in peru.** *J Acquir Immune Defic Syndr* 2006, **42**:604-609.
- Thompson MP, Kurzrock R: **Epstein-Barr virus and cancer.** *Clin Cancer Res* 2004, **10**:803-821.
- Oyama T, Yamamoto K, Asano N, Oshiro A, Suzuki R, Kagami Y, Morishima Y, Takeuchi K, Izumo T, Mori S, et al.: **Age-related EBV-associated B-cell lymphoproliferative disorders constitute a distinct clinicopathologic group: a study of 96 patients.** *Clin Cancer Res* 2007, **13**:5124-5132.
- Buisson M, Morand P, Genoulaz O, Bourgeat MJ, Micoud M, Seigneurin JM: **Changes in the dominant Epstein-Barr virus type during human immunodeficiency virus infection.** *J Gen Virol* 1994, **75**(Pt 2):431-437.
- Delecluse HJ, Kremmer E, Rouault JP, Cour C, Bornkamm G, Berger F: **The expression of Epstein-Barr virus latent proteins is related to the pathological features of post-transplant lymphoproliferative disorders.** *Am J Pathol* 1995, **146**:1113-1120.
- de Campos-Lima PO, Levitsky V, Brooks J, Lee SP, Hu LF, Rickinson AB, Masucci MG: **T cell responses and virus evolution: loss of HLA A11-restricted CTL epitopes in Epstein-Barr virus isolates from highly A11-positive populations by selective mutation of anchor residues.** *J Exp Med* 1994, **179**:1297-1305.
- Kanno H, Kojima S, Li T, Ohsawa M, Nakatsuka S, Miyaguchi M, Harabuchi Y, Aozasa K: **Low frequency of HLA-A*0201 allele in patients with Epstein-Barr virus-positive nasal lymphomas with polymorphic reticulosis morphology.** *Int J Cancer* 2000, **87**:195-199.
- Manel N, Battini JL, Sitbon M: **Human T cell leukemia virus envelope binding and virus entry are mediated by distinct domains of the glucose transporter GLUT1.** *J Biol Chem* 2005, **280**:29025-29029.
- Yoshida M: **Multiple viral strategies of HTLV-I for dysregulation of cell growth control.** *Annu Rev Immunol* 2001, **19**:475-496.
- Kozuru M, Uike N, Muta K, Goto T, Suehiro Y, Nagano M: **High occurrence of primary malignant neoplasms in patients with adult T-cell leukemia/lymphoma, their siblings, and their mothers.** *Cancer* 1996, **78**:1119-1124.
- Beltran-Garate BE, Carrasco-Yalan AA, Lopez-Odria OM, Riva-Gonzales L, Rios H, Chumpitaz-Anchiraco G, Falcon-Lisarazo S, Navarro-MJ, de Mendoza FH, Castillo-Aguirre J: **Clinical Outcomes in Adult T Leukemia/Lymphoma: Report of 55 Cases from Peru.** *ASH Annual Meeting Abstracts* 2005, **106**:4797.
- Pimentel P, Beltran B, Flores D, Ferrel G, Falcon S, Vera L, Figueroa A, Portugal K, Bermudez V: **Clinical characteristics of lymphomatous form of Adult T cell lymphoma-leukemia in Peru.** *ASCO Meeting Abstracts* 2005, **23**:6728.
- Fagnoni FF, Vescovini R, Passeri G, Bologna G, Pedrazzoni M, Lavagetto G, Casti A, Franceschi C, Passeri M, Sansoni P: **Shortage of circulating naive CD8(+) T cells provides new insights on immunodeficiency in aging.** *Blood* 2000, **95**:2860-2868.
- Koch S, Larbi A, Derhovanessian E, Ozelik D, Naumova E, Pawelec G: **Multiparameter flow cytometric analysis of CD4 and CD8 T cell subsets in young and old people.** *Immun Ageing* 2008, **5**:6.
- Naylor K, Li G, Vallejo AN, Lee WW, Koetz K, Bryl E, Witkowski J, Fulbright J, Weyand CM, Goronzy JJ: **The influence of age on T cell generation and TCR diversity.** *J Immunol* 2005, **174**:7446-7452.
- Zinkernagel RM, Moskophidis D, Kundig T, Oehen S, Pircher H, Hengartner H: **Effector T-cell induction and T-cell memory versus peripheral deletion of T cells.** *Immunol Rev* 1993, **133**:199-223.
- Spaulding C, Guo W, Effros RB: **Resistance to apoptosis in human CD8+ T cells that reach replicative senescence after multiple rounds of antigen-specific proliferation.** *Exp Gerontol* 1999, **34**:633-644.
- Franceschi C, Capri M, Monti D, Giunta S, Olivieri F, Sevini F, Panourgia MP, Invidia L, Celani L, Scurti M, et al.: **Inflammaging and anti-inflammaging: a systemic perspective on aging and longevity emerged from studies in humans.** *Mech Ageing Dev* 2007, **128**:92-105.
- Murata T, Nakamura S, Kato H, Yatabe Y, Shiraishi T, Kuroda M, Yatsuni R, Suchi T: **Epstein-Barr virus-related Hodgkin's disease showing B cell lineage in an immunosuppressive patient seropositive for HTLV-I.** *Pathol Int* 1997, **47**:801-805.
- Sadahira Y, Nishihara H, Shimizu M, Hirokawa M, Wada H, Yamada O, Yawata Y, Manabe T: **Epstein-Barr virus-associated Hodgkin's disease in HTLV-I seropositive patients: a report of two cases.** *Pathol Int* 1998, **48**:67-73.
- Tobinai K, Ohtsu T, Hayashi M, Kinoshita T, Matsuno Y, Mukai K, Shimoyama M: **Epstein-Barr virus (EBV) genome carrying monoclonal B-cell lymphoma in a patient with adult T-cell leukemia-lymphoma.** *Leuk Res* 1991, **15**:837-846.
- Roudier M, Lamaury I, Strobel M: **Human T cell leukemia/lymphoma virus type I (HTLV-I) and Pneumocystis carinii associated with T cell proliferation and haemophagocytic syndrome.** *Leukemia* 1997, **11**:453-454.
- Shahbaz S, Reich D, Arevalo-Valencia D, Kucinska S, Tulczynska J, Fleischman J: **HTLV-I-associated adult T cell leukemia lymphoma presenting as granulomatous pneumocystis jiroveci pneumonia (PJP) and hypercalcemia.** *J Gen Intern Med* 2007, **22**:420-423.