

RESEARCH

Open Access

# The host-range, genomics and proteomics of *Escherichia coli* O157:H7 bacteriophage rV5

Andrew M Kropinski<sup>1,2</sup>, Tom Waddell<sup>3</sup>, Juncai Meng<sup>4</sup>, Kristyn Franklin<sup>1</sup>, Hans-Wolfgang Ackermann<sup>5</sup>, Rafiq Ahmed<sup>6</sup>, Amanda Mazzocco<sup>1</sup>, John Yates III<sup>7</sup>, Erika J Lingohr<sup>1</sup> and Roger P Johnson<sup>1\*</sup>

## Abstract

**Background:** Bacteriophages (phages) have been used extensively as analytical tools to type bacterial cultures and recently for control of zoonotic foodborne pathogens in foods and in animal reservoirs.

**Methods:** We examined the host range, morphology, genome and proteome of the lytic *E. coli* O157 phage rV5, derived from phage V5, which is a member of an *Escherichia coli* O157:H7 phage typing set.

**Results:** Phage rV5 is a member of the *Myoviridae* family possessing an icosahedral head of 91 nm between opposite apices. The extended tail measures 121 x 17 nm and has a sheath of 44 x 20 nm and a 7 nm-wide core in the contracted state. It possesses a 137,947 bp genome (43.6 mol%GC) which encodes 233 ORFs and six tRNAs. Until recently this virus appeared to be phylogenetically isolated with almost 70% of its gene products ORFans. rV5 is closely related to coliphages Delta and vB-EcoM-FY3, and more distantly related to *Salmonella* phages PVP-SE1 and SSE-121, *Cronobacter sakazakii* phage vB\_CsaM\_GAP31, and coliphages phAPEC8 and phi92. A complete shotgun proteomic analysis was carried out on rV5, extending what had been gleaned from the genomic analyses. Host range studies revealed that rV5 is active against several other *E. coli*.

**Keywords:** *E. coli* O157:H7, Phage evolution, Phage ecology, *Myoviridae*, Genomics, Proteomics, Bioinformatics, Pyrosequencing, Tail spike

## Background

Since *Escherichia coli* O157:H7 is associated with foodborne illness in humans with serious complications such as hemorrhagic colitis and the hemolytic uremic syndrome, much effort has been directed at understanding the epidemiology and virulence of this zoonotic bacterium [1,2], and minimizing its carriage by cattle through phage biocontrol [3-5].

The scientific literature lists over fifty phages described as being *E. coli* O157-specific. These include sixteen phages (V1-V16) comprising part of a phage typing scheme for this bacterium [6] plus phages 38, 39, 41, 42, ECB7 and ECA1 [7]; AR1 [8,9]; Bo-21, Av-05, Av-06, and Av-08 [10]; CA933P, CA911 MFA933P and MFA45D [11]; CEV1 and CEV2 [12,13]; CSLO157 [14]; DC22 [15], e4/1c and e11/2 [16]; ECML-4, ECML-117, and ECML-134 [17]; JK06; KH1, KH4 and KH5 [18]; LG1 [19]; φV10 [20,21]; PP01

[22]; SFP10 [23]; SH1 [24]; SP15, SP21, and SP22 [25]; vB\_EcoM\_CBA120 [5]; vB\_EcoS\_AKVF33 [4]; and, vB\_EcoS\_Rogue1 [26]. However, relatively little or consistent information on morphology and taxonomic position, host range, receptor specificity, genome size and characterization is available for many of these viruses.

Only a limited number of these viruses have been fully sequenced. They include members of the *Myoviridae* (AR1, V7, wV8, CBA120, SFP10), *Siphoviridae* (JK06; Rogue1; AKVF33) and *Podoviridae* (φV10) viral families. All are lytic phages except the latter virus which is temperate. The myoviruses include representatives of three viral genera: the “FelixO1likevirus” (wV8; [27,28]), the “Viunlikeviruses” (CBA120 and SFP10; [29] and the “T4likeviruses” (AR1 and V7 [30]) and the “T5like viruses” (AKVF33). The siphoviruses belong to the “Tunlikevirus” genus (JK06, Rogue1) or “T5likevirus” (AKVF33), while the member of the *Podoviridae* is related to Group E1 *Salmonella enterica*-specific bacteriophage ε15 [31], making it a member of the “Epsilon15likevirus” genus [28].

\* Correspondence: Roger.Johnson@phac-aspc.gc.ca

<sup>1</sup>Public Health Agency of Canada, Laboratory for Foodborne Diseases, 110 Stone Road West, Guelph, ON N1G 3W4, Canada

Full list of author information is available at the end of the article

We describe here the host range, morphology, genome and proteome of a phage designated rV5, considered a derivative of the typing phage V5 of the original *E. coli* O157:H7 phage typing set [6]. Phage rV5 was the predominant phage recovered (hence “r”V5) from the feces of calves experimentally infected with *E. coli* O157:H7 and treated successfully with a cocktail of six of these typing phages including V5 during a phage therapy trial [32,33]. Although having the same host range as V5, as shown below, rV5 was considered distinct from V5 as rV5 may have acquired other attributes during passage through the calves that would enhance its value as a candidate therapeutic phage.

## Results

### Host-range of phage rV5

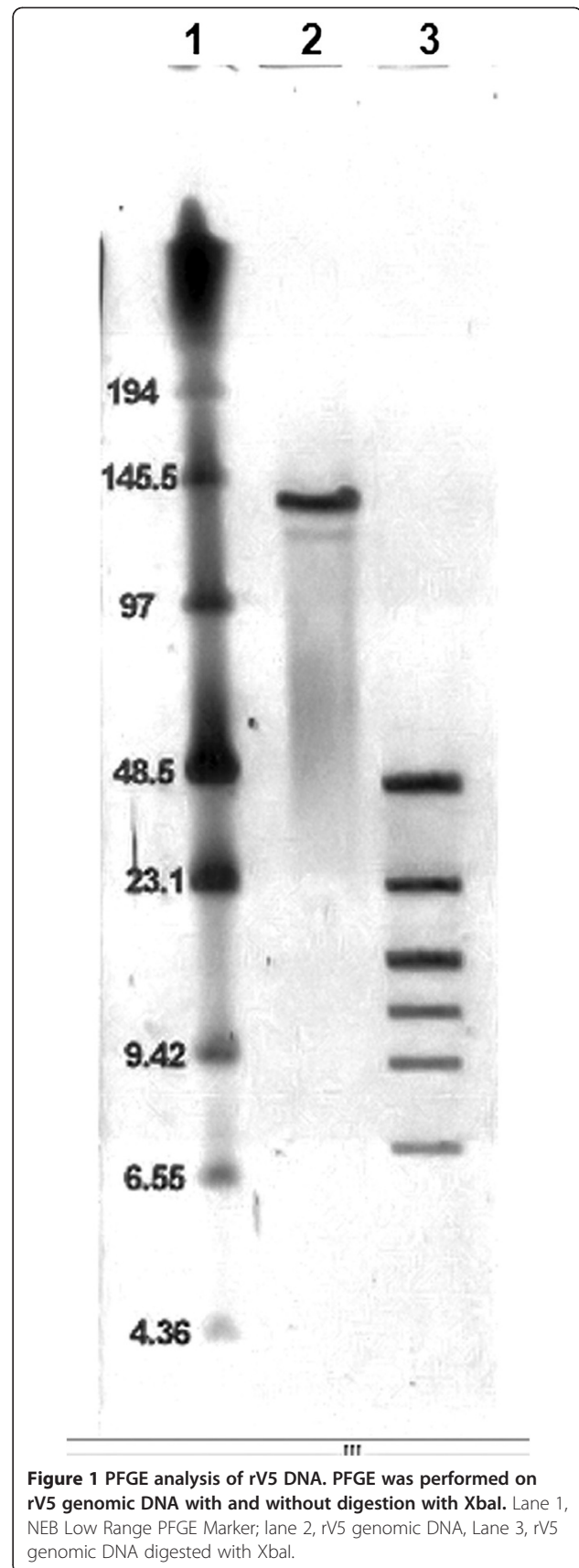
The phage was tested for lytic activity on reference strains of 12 common phage types of *E. coli* O157:H7 and the ECOR collection [34]. The host range and activity of rV5 on these 12 is the same as previously found for phage V5 (data not shown). Six (50%) of the 12 O157:H7 phage type reference strains were susceptible; four being highly susceptible (>50% lysis) (Additional file 1: Table S1). Seventeen (24%) of 72 strains of the ECOR collection showed evidence of lysis, although only one strain was highly susceptible (>50% lysis) (Additional file 2: Table S2) Among these 17 strains, five had O antigens shared by other diarrheagenic *E. coli*: O7, enteroaggregative *E. coli*; O25 and O173, enterotoxigenic *E. coli*; O113, enterohemorrhagic *E. coli*; and O167, enteroinvasive *E. coli* [35].

### Morphology of rV5

Phage rV5 has a contractile tail and is therefore a member of the *Myoviridae* family. This virus has an icosahedral head with a diameter of 91 nm between opposite apices. The extended tail measures 121 × 17 nm and has a sheath of 44 × 20 nm and a 7 nm-wide core in the contracted state. Five to six thin tail fibers of 70 nm in length are occasionally seen (data not shown).

### Properties of the phage genome

The sequence of the rV5 phage genome was determined through sequencing of two random clone libraries and by primer walking using the phage DNA as a template. All 846 sequence reactions at approximately 600 bp per reaction resulted in 3.6 fold coverage of the genome. The final sequence of the circularly permuted genome (137,947 bp, 43.6 mol% GC) is very similar to the size estimated by PFGE (132.5 kb; Figure 1). An analysis of the variation in base composition over the entire length of the genome



**Figure 1** PFGE analysis of rV5 DNA. PFGE was performed on rV5 genomic DNA with and without digestion with *Xba*I. Lane 1, NEB Low Range PFGE Marker; lane 2, rV5 genomic DNA, Lane 3, rV5 genomic DNA digested with *Xba*I.

revealed very little evidence of horizontally acquired genes [36].

#### tRNAs

Like many of the larger members of the *Myoviridae*, rV5 codes for tRNAs. Five (Arg<sub>AGA</sub>, Tyr<sub>TAC</sub>, Thr<sub>ACA</sub>, Met<sub>ATG</sub>, Pro<sub>CCA</sub>) were identified using the tRNAScan program [37] and an additional one (Ser<sub>TGA</sub>) was detected using ARAGORN [38]. In *E. coli* O157:H7 strains AGA is used as the Arg codon 5.1% of the time, followed by threonyl codon ACA (14.6%), prolyl codon CCA (19.1%), tyrosyl codon TAC (42.7%), and methionyl codon ATG (100%). By comparison, rV5 uses these same codons 26, 35, 29, 46 and 100% of the time. It would appear that the presence of the tRNA<sub>Arg</sub> and the tRNA<sub>Pro</sub> homologs would increase the rate of translation of phage mRNAs. Methionyl tRNA, while seemingly unwarranted, occurs in many members of the *Myoviridae* including *Aeromonas* phage Aeh1 (2 copies, NC\_005260), mycobacteriophages Bxz1 (2 copies, NC\_004687), vibriophage KVP40 (NC\_005083), *Listeria* phage P100 (NC\_007610), and *Synechococcus* phage S-PM2 (3 copies, NC\_006820). This suggests that the presence of additional tRNA<sub>Met</sub> may facilitate the rapid translation of phage mRNAs.

#### Identification of ORFs

The ORFs for rV5 were identified using the Kodon software package from Applied Maths (Austin, TX). In almost every case upstream there was a sequence showing considerable similarity to the consensus ribosome-binding site (5'GGAGGT3'). A total of 233 ORFs were discovered most closely packed or overlapping. The total codon capacity of the genome was 91.6% (average 0.54 kb per ORF) (Figure 2). The rV5 genome contained 88 mainly small ORFs between 92269–121323 and no observable ORFs from regions 104013–106618. Prior to our description of *Salmonella* phage PVP-SE1 [39], only 73 (31%) of gene products of rV5 possessed homologs to proteins in the nonredundant databases; and, only 44 (19%) were homologous to phage proteins. The rV5 proteome was scanned with TMHMM [40], and Phobius [41] programs, revealing that 15 proteins possessed transmembrane domains (Additional file 3: Table S3).

#### Transcription

From the gene layout in Figure 2, we propose that rV5 contains four transcriptional units comprising genes *10-1-238-164*, *11-26*, *27-81*, and *82-163*, respectively. Based upon the gene arrangement, we would minimally expect bidirectional transcriptional terminators between genes 26 and 27 and genes 163 and 164, and bidirectional promoters between genes 10 and 11 and 81 and 82, respectively. Of these sites, only the

bidirectional terminators were located between genes 26 and 27. In addition, bidirectional promoters were discovered between genes 10 and 11. In total, using stringent selection processes, 33 promoters and 20 rho-independent terminators were discovered in the rV5 genome (Additional file 4: Table S4). All had extensive homology to the consensus *E. coli* promoters, with 11 possessing extended -10 regions [34,35]. Since these promoters are distributed across the rV5 genome, it suggests that modification of the host holo-RNA polymerase, as observed with coliphage T4 to permit recognition of different promoter classes [42], might not occur in rV5. To investigate this further, we selected the upstream sequence for late genes (27–66) and resubmitted it to MEME [43]. Eight copies of a motif (TggTAaAAAtA) which is similar to the T4 late promoter consensus sequence (TATAAATA) [44,45], were identified (Additional file 4: Table S4). Late transcription in T4-like phages is dependent upon three gene products, namely gp45 (RNA polymerase recruitment), gp33 (co-activator of late transcription) and gp55 (late promoter recognition protein). There are no homologs for these proteins in rV5.

PSI-BLAST analysis of gp11 revealed that it is probably a Srd homolog. These proteins are postulated to act as antisigma factors functioning as decoys for RpoD and RpoS. It is homologous to similar proteins in coliphages T4 (NP\_049634), *Acinetobacter* phage 133 (YP\_004300600) and *Pseudomonas* phage φPto-bp6g (AE014611). Perhaps this is used as a part of a molecular switch between early and late transcription.

#### Nucleotide metabolism and DNA replication

Phage rV5 contains numerous genes involved in nucleotide metabolism and DNA replication. Among the former we found genes coding for exo- (gp94) and endodeoxyribonucleases (gp213), the anaerobic and aerobic ribonucleotide reductase subunits (gp109-112 and 117), and thymidylate synthase (gp106). This group of enzymes is also commonly found in many other members of the *Myoviridae* and is collectively responsible for generating deoxyribonucleotides for phage DNA synthesis. The ribonucleoside-diphosphate reductases are responsible for the interconversion of ribo- to deoxyribonucleotides and are usually represented by three main classes: class I complex of NrdAB or NrdEF which requires oxygen for activity; class II containing NrdJ and the oxygen-sensitive; class III encoded by NrdDG [46]. As with coliphages RB43, RB49 and RB69, phage rV5 contains homologs of the hosts NrdAB and NrdDG proteins.

Among the enzymes directly involved in DNA replication are a DNA ligase (gp88), DNA polymerase (gp228), and two possible helicases (gp230, gp237). gp88 contains

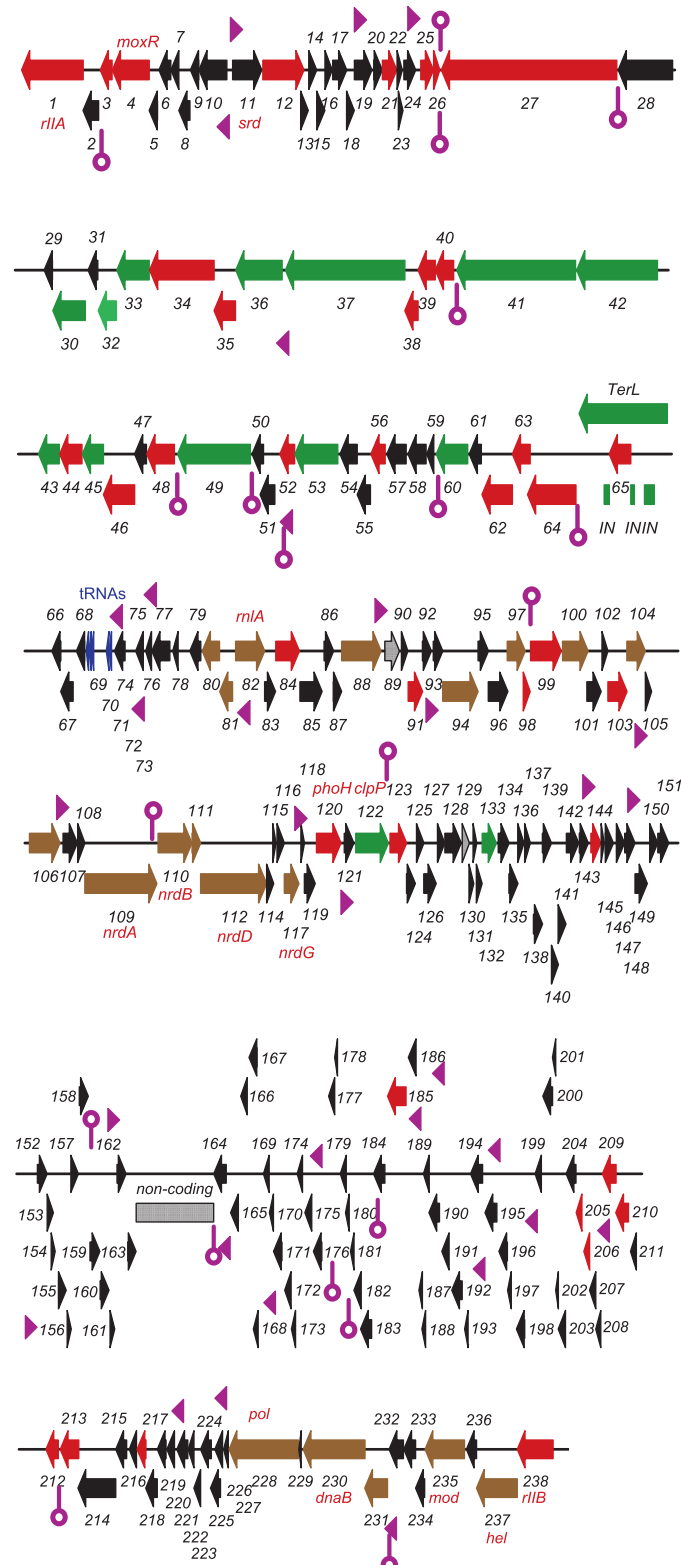


Figure 2 (See legend on next page.)



(See figure on previous page.)

**Figure 2 Genetic map of phage rV5 with each line representing 21 kb of the sequence.** Genes in colour represent those whose products exhibit homologs in the NCBI nonredundant databases, while those illustrated in black lack homologs. Green, brown and grey colored genes specify proteins involved in morphogenesis, DNA metabolism and lysis, respectively. The grey box labeled "non-coding" contained no ORFs. Promoters are illustrated as pink arrowheads, while rho-independent terminators are displayed as stem-loop structure, also in pink.

a PRK09125 DNA ligase domain and its closest homolog in ATP-dependent DNA ligase of Enterobacteria phage vB\_EcoM-FV3 (AEZ65217), *Salmonella* phage 7-11 (YP\_004782418) [47] and *Pseudomonas* phage P3\_CHA (ADX32167) [48]. The 775 amino acid rV5 DNA polymerase (gp228), possesses a smart00482 (POLAc) DNA polymerase A and, a DNA\_pol\_A\_pol\_I\_B (cd08643) domain. Its closest homologs are in Enterobacteria phage vB\_EcoM-FV3 (AEZ65345), *Cronobacter* phage CR3 (AFH21225) [49] and *Vibrio* phage ICP1\_2001\_A (ADX89239) – all members of the *Myoviridae*. Gp230 contains C-terminal GP4d\_helicase (cd01122) and DnaB (COG0305) domains. Again its homologs are to proteins in vB\_EcoM-FV3 (AEZ65346), CR3 (AFH21242) as well as to primase/helicases in members of the *Podoviridae*. The product of gene 237 has PIF1 (pfam05970), PIF1-like helicase and RecD (COG0507), ATP-dependent exoDNAse (exonuclease V), alpha subunit domains, and again shows homology to proteins in phages vB\_EcoM-FV3 and CR3.

In an effort to define the origin of replication of this phage, Grigoriev AT- and GC-skew analysis was undertaken [50-53]. The rV5 genome revealed changes at nucleotides 6425, 13675-13725, 66675-66725 and 104425-105475, all of which appear to be associated with a change in the orientation of transcription.

### Proteomics and morphogenesis

The proteomics of rV5 were investigated in three ways. (1) The proteins were screened for homologs to structural proteins in other phages using the BLASTP program, (2) the virions were studied by one-dimensional SDS-PAGE (data not shown) and (3) the total phage proteome was investigated by mass spectrometry (Additional file 5: Table S5). SDS-PAGE revealed at least 10 bands, the five major ones having relative molecular weights of 288.2, 174.0, 52.3, 26.1 and 9.7 kDa. Among the proteins detected by total phage proteomics were the putative tail proteins (gp37, 42 and 49), tail fibre proteins (gp30, 32, 33, 41 and 43), tail baseplate (gp36 and 45), and a major capsid protein (gp60).

The five proteins that deserve further attention are gp30, 33, 37, 41 and 43 since they appear to specify tail fiber-like proteins which play crucial roles in phage adsorption to its host. These proteins were analyzed using HHpred [54]. Gp30, a 347 amino acid protein, contained a domain with significant similarity (Probab=98.39 E-value=9e-08) to the short tail fibers of coliphage T4 (Gp12) which are

involved in LPS-binding (PDB accession number 1PDI; [55]). Interestingly, the similarly sized Gp33 also shows significant homology (Probab=97.69 E-value=7.5e-06) to this same protein. These two proteins show 42.3% sequence identity using the ALIGN Query program [56] which suggests that two chemotypes of LPS may be recognized.

With 1279 amino acid residues, gp37 is one of the largest proteins specified by this virus. Its domains include COG4733 [phage-related protein, tail component]. The phage homologs include *Shewanella* prophage MUSO2, 43 kDa tail protein 3CDD (Probab=97.13 E-value=0.011) and a *Neisseria* 43 kDa prophage tail protein (Probab=97.05 E-value=0.0095). Gp41, a 1272 AA protein, possesses a C-terminal domain (3GW6, Probab=98.69 E-value=1.5e-08) to an endo-N-acetylneuraminidase from Enterobacteria phage K1F, a podovirus. This region shows a high probability of a coiled-coil structure as demonstrated using PCOILS [57,58]. The N-terminus of gp43 (222 AA) shows structural similarity to the N-terminus of phage P22 tailspike protein (2VNL; Probab=96.34 E-value=0.00042).

Using mass spectrometry of trypsin-digested virions the following proteins were identified: gp52 (tail tube protein; 16.1% coverage), gp53 (tail sheath protein; 31.9%), gp60 (major capsid protein; 83.3%), gp61 (head decoration protein; 85.3%), gp64 (portal protein; 36.3%) all of which are expected to be major components of the viral particles. In addition, gp133 (15.9%) was one of the predominant proteins (Additional file 5: Table S5). A comparison of phage rV5 and phi92 [59] permitted us to definitively identify the tail tube and sheath proteins.

### Introns in terminase

BLASTX analysis revealed that the gene specifying the large subunit of the terminase complex was divided into three segments, one of which contained a homing endonuclease. While introns are not uncommon in myoviral genomes, being present in coliphage T4 [42], *Aeromonas* phage 25 (NC\_008208), *Pseudomonas* phage φEL, and *Synechococcus* phage S-PM2, in only one other virus, siphovirus LL-H of *Lactobacillus delbrueckii* subsp. *Lactis*, does the TerL gene contain an intron [60].

### Lysis

Lysis of infected bacteria is brought about through the sequential effects of a pore-producing protein – the holin – and a peptidoglycan-degrading enzyme – the lysin. Holins usually contain 2–3 membrane spanning helices (TMD), a

charged C-terminus and exhibit poor sequence identity to other functionally related proteins [61-63]. In many phages, a lysis cassette exists in the genome with the holin gene preceding that of the lysin. In rV5, Gp89 codes for an obvious lysin (pfam00959, Phage\_lysozyme & COG467, Muramidase) possessing strong sequence identity to the lysozymes of enterobacterial phages phage vB\_EcoM-FV3, and *Salmonella* phage Vi II variant E1 [64]. Since no homolog to a holin was discovered, the rV5 proteome was scanned with TMHMM [40] and Phobius [41]. In only one case, gp129, did the two programs indicate that the protein contained two TMDs. This 78 amino-acid residue protein also possessed a high concentration of lysyl- and arginyl-residues in its C-terminus suggesting that this putative holin is separated from the lysin gene as in phage T4.

## Discussion

### Host range studies

Phage rV5 was subject to extensive host range studies, revealing virulence for numerous *E. coli* other than serotype O157:H7. The six *E. coli* O157:H7 phage type reference strains susceptible to rV5 together represent 73% of all isolates of *E. coli* O157:H7 phage typed at the National Microbiology Laboratory in Canada in 2007–2010 [65] [The National Microbiology Laboratory (NML) and Centre for Food-borne Environmental and Zoonotic Infectious Diseases (CFEZID) PHAC, Provincial Public Health Microbiology Laboratories. 2010 Annual Summary of Laboratory Surveillance Data. Forthcoming]. Also, among the susceptible *E. coli* strains of the ECOR collection were several that share the same O antigens as other diarrheagenic *E. coli*. Since O antigens are recognized as attachment sites for phages of Gram-negative bacteria, rV5 potentially may be active against diarrheagenic *E. coli* other than *E. coli* O157:H7. Virulence for such a broad range of pathogens potentially is of value for candidate therapeutic phages, as has been noted previously [66].

### Evolutionary considerations

The phylogenetic origin of specific phages is always complicated by recombinational exchanges that have presumably occurred during the speciation of the virus. When this study was initiated in 2004, phage rV5 was a genomic orphan since the majority (ca. 70%) of its genes were ORFans [67,68]. Since then five other phages have been reported to be rV5-like: coliphages vB\_EcoM-FV3 [69], phAPEC8 [70] and phi92 [59], *Cronobacter sakazakii* phage vB\_CsaM\_GAP31 [71] and *Salmonella* phage PVP-SE1 [39]. To this list we can also add *Salmonella* phage SSE-121 (JX181824); and, coliphage Delta Y that Andrey Letarov and Alla Golomidova (Winogradsky

Institute of Microbiology, RAS, Moscow, Russia), isolated from horse manure, and partially sequenced. This once again illustrates that very similar phages may be isolated from widely different locales [72-74].

Based upon the proposed assignment to a genus being the presence of 40% conserved proteins [28,75], the five fully sequenced phages could be grouped in the “V5likevirus” genus. The submitting author is now of the opinion that the use of the 40% protein homologs as an indication of membership in the same genus is too inclusive, resulting in, at least for the phages with large proteomes, “taxonomic lumping.” At the protein level, rV5 and FV3 share 90.6% homologous proteins; while rV5 and PVP-SE1, only share 42.9% of the proteomic content. At the DNA level, rV5 and coliphage vB\_EcoM-FV3 share 87.3% DNA sequence identity, while rV5 and *Salmonella* phage PVP-SE1 share <50% sequence identity. Based upon BLASTN analysis the mycobacteriophages have been grouped and subgrouped (<http://phagesdb.org/>; [76]). Using the same approach, complemented by progressiveMauve analyses (Figure 3) [77] we visualize the existence of three related genera - the “V5likevirus” (rV5, FV3), the “Pvplikevirus” (PVP-SE1, GAP31 and SSE-121) and the Phi92likevirus (phi92 and phAPEC8). The results of the progressiveMauve alignment also indicate a serious problem with the genomics of phages with circularly permuted genomes, that the genomes are not collinear. This is most apparent with the “Pvplikevirus” all of which start in radically different positions, which require realignment before running EMBOSS stretcher. The separation of the rV5-related phages into three groups is also indicated by a phylogenetic analysis of their capsid proteins and DNA polymerases which clearly indicate three clades (Figure 4).

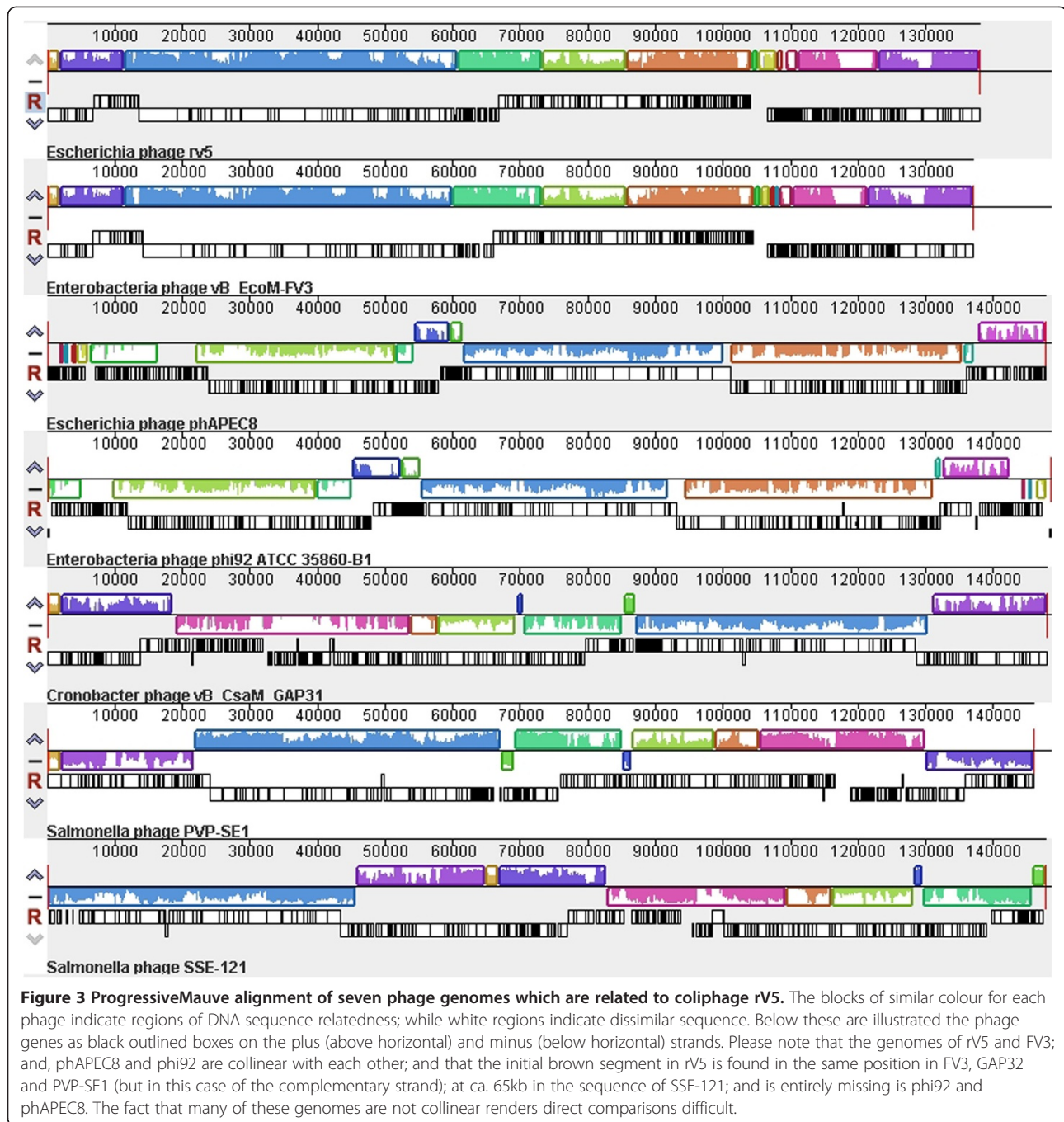
## Materials and methods

### Bacteriophages and hosts

Phage V5 was obtained from Rafiq Ahmed (National Microbiology Laboratory, Winnipeg, MN, Canada) and is part of a collection of *E. coli* O157:H7 typing phages [6]. Phage rV5 was isolated during a successful “proof of concept” study of phage therapy for *E. coli* O157:H7 infection of cattle; it was the predominant phage in the feces of calves that eliminated *E. coli* O157:H7 following oral administration of a mixture of V5 and five other lytic O157 phages [32,33]. Determination of the host range of rV5 and V5 propagated and quantitated on *E. coli* O157:H7 strain R508 for 12 *E. coli* O157:H7 phage type reference strains revealed they shared the same host range, consistent with the designation of rV5 as a derivative of V5.

### Host range study

The virulence of phage rV5 for reference strains of 12 common phage types of *E. coli* O157:H7 and 72 strains of the ECOR collection [34] was determined by spotting



$10^5$  PFU of phage rV5 onto freshly seeded lawns of bacteria on agar plates [6].

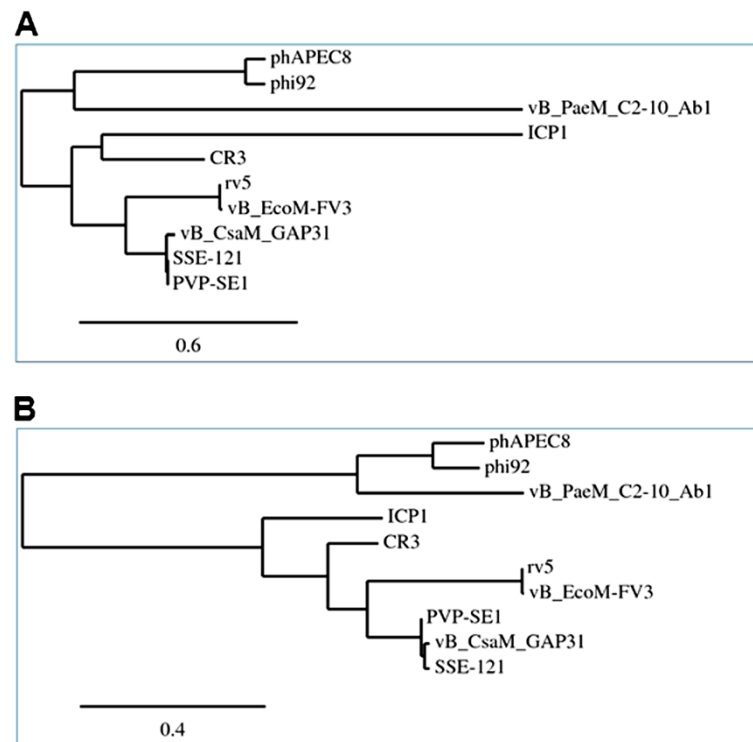
#### Electron microscopy

Phage rV5 was sedimented for 60 min at 25,000 g in a Beckman J2-21 ultracentrifuge (Palo Alto, CA) using a JA-18.1 fixed angle rotor, and washed twice in buffer (0.1 M neutral ammonium acetate). The sediment was deposited on carbon-coated copper grids, stained with 2% potassium phosphotungstate (pH 7.0) and 2% uranyl

acetate (pH 4.0), and then examined in a Philips EM 300 electron microscope operated at 60 kV. Magnification was monitored using T4 phage tails (113 nm in length) [78]. Particles were measured on prints at a final magnification of 297,000 times.

#### Propagation of phages and their purification

The phages were propagated at a multiplicity of infection (MOI) of 10 on *E. coli* O157:H7 strain R508 in 2.0 L of TSB containing 10 mM MgSO<sub>4</sub> for 18 h at 37°C



**Figure 4** Phylogenetic analysis of rv5-related phage capsids protein (A) and DNA polymerases (B) using “one click at phylogeny.fr. Homologous proteins from *Cronobacter* phage C3 (NC\_017974), *Vibrio* phage ICP1 (NC\_015157) and *Pseudomonas* phage vB\_PaeM\_C2-10\_Ab1 (HE983845) were used as outliers.

with shaking at 120 rpm. The resulting lysates were clarified by centrifugation at  $6,000 \times g$  and pancreatic DNase 1 and RNase A (Sigma Aldrich, St. Louis, MO) were added to the filtrate to concentrations of 10  $\mu\text{g}/\text{ml}$ . The phages were precipitated with polyethylene glycol 8000 [79], and subsequently purified by cesium chloride step and equilibrium density gradient ultracentrifugation as described by Sambrook and Russell [80]. The final band was dialyzed at  $4^\circ\text{C}$  against two changes of 2 L of dialysis buffer (10 mM Tris HCl, 10 mM  $\text{MgSO}_4 \cdot 7\text{H}_2\text{O}$ , 25mM NaCl, pH 7.5, 0.01% gelatin). The concentration of purified phages in the dialyzed suspension was determined by direct plaque assay with *E. coli* O157:H7 strain EC990298 as the host.

#### Pulsed field gel electrophoresis (PFGE)

The genome size of rv5 was characterized by PFGE [81] and data were analyzed using the BioNumerics program (Applied Maths, Austin, TX).

#### Purification of phage DNA

DNA for construction of a clone library was extracted from phage rv5 prepared as above to the stage of precipitation with PEG 8000 and sedimentation by ultracentrifugation. The pellet was resuspended in a minimal volume of lambda diluent. EDTA was then added to a

concentration of 20 mM, and the phage DNA was extracted by sequential treatment with proteinase K (50 mg/ml), SDS (0.5%, w/v), phenol-chloroform extraction and ethanol precipitation [80]. The precipitated DNA was dissolved in water, tested for purity by electrophoresis in 0.9% agarose and by PCR for contaminating bacterial DNA using the *malM* gene of *E. coli* O157:H7 as a target. The concentration of DNA in the final preparation was calculated from its absorbance at 260 nm.

#### Genome sequencing

The sequence of rv5 was derived initially from a clone library and subsequently by primer walking at The Centre for Applied Genomics (Toronto, ON, Canada). Primers were designed using Premier Biosoft's NetPrimer (<http://www.premierbiosoft.com/netprimer/>), and purchased from Sigma Genosys Canada (Oakville, ON). The sequences were assembled using the SeqMan program (DNASTAR, Madison, WI).

#### Genome annotation

Open reading frames (ORFs) were identified using Kodon (Applied Maths). The protein products of each ORF were examined for homologs using the programs PSI-BLASTP [82,83] or Batch-BLAST ([http://greengene.umd.edu/programs/NCBI\\_Blast.html](http://greengene.umd.edu/programs/NCBI_Blast.html)). In certain cases the



proteins were also subjected to HHpred [54,84] analysis at <http://toolkit.tuebingen.mpg.de/hhrep>. In addition, each protein was scanned for conserved protein motifs using Batch Web CD-Search Tool [85,86], TMHMM [41] and Phobius [41]. Transfer RNAs were detected using tRNAscan [37] and ARAGORN [38]. Codon usage information on *E. coli* O157:H7 strains was determined using data from the Forsyth Institute's Microbial Genome Codon Usage Database (<http://exon.gatech.edu/metagenome/CodonUsageDatabase/>). The codon usage of rV5 was analyzed using DNAMAN software (Lynnon Corp., Vaudreuil-Dorion, QC, Canada). Potential terminators were located by ARNold [87] and verified using the MFOLD algorithm [88]. Putative promoters were identified in the sequence upstream (5') of the genes by homology to the consensus sigma-70 promoters of *E. coli* (TTGACA (N15-20) TATAAT) using the "search sequences" feature of DNAMAN. As a further aid to identifying interesting regulatory sequences 100 bp of 5' upstream sequence data was extracted using extractUpStreamDNA at <http://lfz.corefacility.ca/extractUpStreamDNA/> and submitted to MEME [89] at <http://meme.sdsc.edu/>.

For comparative genomic analyses we employed EMBOSS Stretcher at <http://emboss.bioinformatics.nl/cgi-bin/emboss/stretcher>, while CoreGenes 2.0 [90,91] was used to compare proteomes. Phylogenetic analyses were carried out using "one click" at <http://www.phylogeny.fr/> [92].

#### Genome accession numbers

The annotated genomic sequence of phage rV5 is available from the NCBI under the accession number DQ832317.

#### Proteomics (sample preparation and MudPIT analysis)

After unsuccessful attempts to disrupt phage rV5 by osmotic shock with sodium chloride, it was treated with LiCl (2). Six ml of 10 M LiCl were added to 6 ml of purified dialysed phage rV5 containing  $1.2 \times 10^{12}$  PFU. The mixture was incubated for 20 min at 46°C and then diluted 10-fold with dialysis buffer (10 mM Tris-HCl, 10 mM MgSO<sub>4</sub>, 25 mM NaCl, pH 7.5) at 4°C. After concentration to the starting volume (6 ml) by centrifugation in a 10,000 molecular weight cut-off (MWCO) device (Amicon Centriprep YM10, Millipore Corporation, Bedford MA, USA), the concentrate was dialyzed against 4 L of dialysis buffer for 24 h in a 10,000 MWCO cassette (Pierce, Rockford, IL, USA). After dialysis, the sample was processed three times on an immobilized DNase 1 F<sub>7M</sub> matrix column (MoBiTec, Göttingen, Germany) with elution by gravity. The eluate was dialyzed as before, against two 4 L volumes of the same dialysis buffer to remove the cleaved DNA fragments and then concentrated to 0.5 ml by centrifugation in a 10,000

MWCO device (Centriprep YM10) and stored at -20°C. The protein concentration was estimated from its absorbance at 280 nm at 1.59 mg/ml.

Protein samples were suspended in 8 M urea and 100 mM Tris pH 8.5, reduced with 100 mM TCEP for 30 min followed by cysteine alkylation with 55 mM iodoacetamide for another 30 min in the dark. The mixture was then diluted to 4 M urea by adding 100 mM Tris buffer pH 8.5 (and CaCl<sub>2</sub> was added to ensure tryptic specificity at 2 mM). Trypsin was then used to digest the protein samples at 37°C for 24 hrs (1:100 enzyme:sample). The digestion was stopped with the addition of formic acid to 4% (v/v) prior to column loading.

The protein digest was pressure-loaded onto a column containing 4 cm of 5 µm C18 resin packed into 250 µm inner diameter fused silica capillary with a M-520 0.5 µm filter assembly (IDEX Health & Science LLC, Oak Harbor, WA), followed by desalting with 0.1% formic acid in 5% acetonitrile. The loaded C18 column was then connected to 100 µm (i.d.) analytical column consisting of 4 cm of packed 5 µm strong cation exchange resin (SCX Partisphere, Whatman GE Healthcare) and 10 cm of packed C18 resin (Polymicro Technologies, Phoenix, AZ) with a 5 µm laser pulled tip. The column assembly was placed inline and LC/LC-MS/MS was carried out as described earlier [93], using a 12-step separation with an Agilent HP1100 system connected to a LCQ Deca ion trap mass spectrometer (Thermo Scientific).

Tandem mass spectra were collected in a data-dependent pattern by collecting one full MS scan (m/z range = 400–1400) followed by MS/MS spectra of the three most abundant precursor ions. The MS/MS spectra were then processed and searched against the protein database (NCBI) using the SEQUEST algorithm (<http://fields.scripps.edu/sequest/>). All subsequent filtering and comparisons of identifications were made using DTASelect and Contrast software [94].

#### Additional files

**Additional file 1: Table S1.** Sensitivity of reference strains of 12 common phage types of *E. coli* O157:H7 to lysis by phage rV5.

**Additional file 2: Table S2.** Sensitivity of ECOR strains to lysis by phage rV5.

**Additional file 3: Table S3.** rV5 genes, their products, homologs and potential function.

**Additional file 4: Table S4.** Predicted promoters and rho-independent terminators found in the rV5 genome.

**Additional file 5: Table S5.** MS data on rV5.

#### Abbreviations

AA: Amino acid; BLAST: Basic local alignment search tool; CFU: Colony forming unit, a measure of the number of viable bacterial cells; DNase: Deoxyribonuclease; ECOR: *Escherichia coli* collection of reference; gp: Gene product; LC-MS: Liquid chromatography-mass spectrometry; MAFFT: Multiple alignment using fast fourier transform; MOI: Multiplicity of

Infection, ratio of infective phage particles to vulnerable hosts; MS-MS: Tandem mass spectrometry; MudPIT: Multi-dimensional protein identification technology; PDB: Research collaborative for structural bioinformatics (rcsb) protein data bank; PFU: Plaque forming unit, a measure of the number of viable viral particles; RNase: Ribonuclease; TCEP: (tris(2-carboxyethyl)phosphine); TMHMM: TransMembrane prediction using Hidden Markov Models; TSB: Tryptic soy broth.

#### Competing interests

The authors have no competing interests to disclose.

#### Authors' contributions

AMK and RPJ designed and guided the project; TW, RPJ, and AM isolated rV5 and with KF, AM and EJL were involved in the initial characterization of this phage; DMM and HWA performed the electron microscopy; EJL and AM arranged for the sequencing; EJL carried out the PFGE; JM and JY conducted the proteomic analyses; and AMK did the annotation. AMK did most of the writing of the paper and all authors read and approved the final manuscript.

#### Acknowledgements

AMK acknowledges research funding from the Natural Sciences and Engineering Research Council of Canada, and with other authors, funding from the Laboratory for Foodborne Zoonoses, Public Health Agency of Canada. These funding bodies did not have any role in the design of the experiments, in the collection, analysis, and interpretation of data; in the writing of the manuscript; or in the decision to submit the manuscript for publication. The authors thank Dr. David Shub for his help in defining the location of the intron in rV5. The authors thank Dr. Jennifer Alami for her careful proofreading and corrections of this manuscript.

#### Author details

<sup>1</sup>Public Health Agency of Canada, Laboratory for Foodborne Diseases, 110 Stone Road West, Guelph, ON N1G 3W4, Canada. <sup>2</sup>Department of Molecular and Cellular Biology, University of Guelph, Guelph, ON N1G 2W1, Canada. <sup>3</sup>Abbott Point of Care, 185 Corkstown Road, Ottawa, ON K2H 8V4, Canada. <sup>4</sup>Merck Research Laboratories, 126E Lincoln Avenue, Rahway, NJ 07065, USA. <sup>5</sup>Département de Microbiologie-infectiologie et immunologie, Faculté de médecine, Université Laval, Québec, QC G1K 7P4, Canada. <sup>6</sup>Enteric Diseases Program, National Microbiology Laboratory, Public Health Agency of Canada, 1015 Arlington Street, Winnipeg, MB R3E 3R2, Canada. <sup>7</sup>The Scripps Research Institute, Department of Cell Biology, Proteomic Mass Spectrometry Laboratory, 10550 North Torrey Pines Road, La Jolla, CA 92037, USA.

Received: 12 June 2012 Accepted: 28 February 2013

Published: 6 March 2013

#### Reference

- Bolton DJ: Verocytotoxic (Shiga toxin-producing) *Escherichia coli*: virulence factors and pathogenicity in the farm to fork paradigm. *Foodborne Pathog Dis* 2011, **8**:357–365.
- Karmali MA: Host and pathogen determinants of verocytotoxin-producing *Escherichia coli*-associated hemolytic uremic syndrome. *Kidney Int Suppl* 2009, **112**:S4–S7.
- Stanford K, McAllister TA, Niu YD, Stephens TP, Mazzocco A, Waddell TE, Johnson RP: Oral delivery systems for encapsulated bacteriophages targeted at *Escherichia coli* O157:H7 in feedlot cattle. *J Food Prot* 2010, **73**:1304–1312.
- Niu YD, Stanford K, Kropinski AM, Ackermann HW, Johnson RP, She YM, Ahmed R, Villegas A, McAllister TA: Genomic, proteomic and physiological characterization of a T5-like bacteriophage for control of Shiga toxin-producing *Escherichia coli* O157:H7. *PLoS One* 2012, **7**:e34585.
- Kutter EM, Skutt-Kakaria K, Blasdel B, el-Shibiny A, Castano A, Bryan D, Kropinski AM, Villegas A, Ackermann HW, Toribio AL, Pickard D, Anany H, Callaway T, Brabban AD: Characterization of a Vi-like phage specific to *Escherichia coli* O157:H7. *Viol J* 2011, **8**:430.
- Ahmed R, Bopp C, Borczyk A, Kasatiya S: Phage-typing scheme for *Escherichia coli* O157:H7. *J Infect Dis* 1987, **155**:806–809.
- Viazis S, Akhtar M, Feirtag J, Brabban AD, Diez-Gonzalez F: Isolation and characterization of lytic bacteriophages against enterohaemorrhagic *Escherichia coli*. *J Appl Microbiol* 2011, **110**:1323–1331.
- Ronner AB, Cliver DO: Isolation and characterization of a coliphage specific form *Escherichia coli* O157:H7. *J Food Prot* 1990, **53**:944–947.
- Liao WC, Ng WW, Lin IH, Syu WJ, Liu TT, Chang CH: T4-Like genome organization of the *Escherichia coli* O157:H7 lytic phage AR1. *J Virol* 2011, **85**:6567–6578.
- López-Cuevas O, Castro-Del CN, León-Felix J, González-Robles A, Chaidez C: Characterization of bacteriophages with a lytic effect on various *Salmonella* serotypes and *Escherichia coli* O157:H7. *Can J Microbiol* 2011, **57**:1042–1051.
- Dini C, De Urraza PJ: Isolation and selection of coliphages as potential biocontrol agents of enterohemorrhagic and Shiga toxin-producing *E. coli* (EHEC and STEC) in cattle. *J Appl Microbiol* 2010, **109**:873–887.
- Raya RR, Varey P, Oot RA, Dyen MR, Callaway TR, Edrington TS, Kutter EM, Brabban AD: Isolation and characterization of a new T-even bacteriophage, CEV1, and determination of its potential to reduce *Escherichia coli* O157:H7 levels in sheep. *Appl Environ Microbiol* 2006, **72**:6405–6410.
- Raya RR, Oot RA, Moore-Maley B, Wieland S, Callaway TR, Kutter EM, Brabban AD: Naturally resident and exogenously applied T4-like and T5-like bacteriophages can reduce *Escherichia coli* O157:H7 levels in sheep guts. *Bacteriophage* 2011, **1**:15–24.
- Kannan P, Yong HY, Reiman L, Cleaver C, Patel P, Bhagwat AA: Bacteriophage-based rapid and sensitive detection of *Escherichia coli* O157:H7 isolates from ground beef. *Foodborne Pathog Dis* 2010, **7**:1551–1558.
- McAllister TA, Stanford K, Bach SJ: Monitoring and migration of *E. coli* O157:H7 in commercial dairies. *Advances in Dairy Technology* 2005, **17**:227–246.
- O'Flynn G, Ross RP, Fitzgerald GF, Coffey A: Evaluation of a cocktail of three bacteriophages for biocontrol of *Escherichia coli* O157:H7. *Appl Environ Microbiol* 2004, **70**:3417–3424.
- Abuladze T, Li M, Menetrez MY, Dean T, Senecal A, Sulakvelidze A: Bacteriophages reduce experimental contamination of hard surfaces, tomato, spinach, broccoli, and ground beef by *Escherichia coli* O157:H7. *Appl Environ Microbiol* 2008, **74**:6230–6238.
- Kudva IT, Jelacic S, Tarr PI, Youderian P, Hovde CJ: Biocontrol of *Escherichia coli* O157 with O157-specific bacteriophages. *Appl Environ Microbiol* 1999, **65**:3767–3773.
- Goodridge L, Chen J, Griffiths M: Development and characterization of a fluorescent-bacteriophage assay for detection of *Escherichia coli* O157:H7. *Appl Environ Microbiol* 1999, **65**:1397–1404.
- Perry LL, SanMiguel P, Minocha U, Terekhov AI, Shroyer ML, Farris LA, Bright N, Reuhs BL, Applegate BM: Sequence analysis of *Escherichia coli* O157:H7 bacteriophage  $\phi$ V10 and identification of a phage-encoded immunity protein that modifies the O157 antigen. *FEMS Microbiol Lett* 2009, **292**:182–186.
- Hendrix RW, Casjens SR: Myoviridae, Siphoviridae, Podoviridae. In *Virus Taxonomy. VIIIth Report of the International Committee on Taxonomy of Viruses*. Edited by Fauquet CM, Mayo MA, Maniloff J, Desselberger U, Ball LA. New York: Elsevier Academic Press; 2005:43–47.
- Morita M, Tanji Y, Mizoguchi K, Akitsu T, Kijima N, Unno H: Characterization of a virulent bacteriophage specific for *Escherichia coli* O157:H7 and analysis of its cellular receptor and two tail fiber genes. *FEMS Microbiol Lett* 2002, **211**:77–83.
- Park M, Lee JH, Shin H, Kim M, Choi J, Kang DH, Heu S, Ryu S: Characterization and comparative genomic analysis of a novel bacteriophage, SFP10, simultaneously inhibiting both *Salmonella enterica* and *Escherichia coli* O157:H7. *Appl Environ Microbiol* 2012, **78**:58–69.
- Sheng H, Knecht HJ, Kudva IT, Hovde CJ: Application of bacteriophages to control intestinal *Escherichia coli* O157:H7 levels in ruminants. *Appl Environ Microbiol* 2006, **72**:5359–5366.
- Tanji Y, Shimada T, Yoichi M, Miyayama K, Hori K, Unno H: Towards a rational control of *Escherichia coli* O157:H7 by a phage cocktail. *Appl Microbiol Biotechnol* 2004, **64**:270–274.
- Kropinski AM, Lingohr EJ, Moyles DM, Ojha S, Mazzocco A, She YM, Bach SJ, Rozema EA, Stanford K, McAllister TA, Johnson RP: Endemic bacteriophages: a cautionary tale for evaluation of bacteriophage therapy and other interventions for infection control in animals. *J Virol* 2012, **9**:207.
- Villegas A, She YM, Kropinski AM, Lingohr EJ, Mazzocco A, Ojha S, Waddell TE, Ackermann HW, Moyles DM, Ahmed R, Johnson RP: The genome and

- proteome of a virulent *Escherichia coli* O157:H7 bacteriophage closely resembling *Salmonella* phage Felix O1. *Viral J* 2009, **6**:41.
28. Lavigne R, Darius P, Summer EJ, Seto D, Mahadevan P, Nilsson AS, Ackermann H-W, Kropinski AM: **Classification of Myoviridae bacteriophages using protein sequence similarity.** *BMC Microbiol* 2009, **9**:224.
  29. Adriaenssens EM, Ackermann HW, Anany H, Blasdel B, Connerton IF, Goulding D, Griffiths MW, Hooton SP, Kutter EM, Kropinski AM, Lee JH, Maes M, Pickard D, Ryu S, Sephezadeh Z, Shahrabak SS, Toribio AL, Lavigne R: **A suggested new bacteriophage genus: "Viunalikevirus".** *Arch Virol* 2012, **157**:2035–2046.
  30. Kropinski AM, Lingohr EJ, Moyles DM, Chibeu A, Mazzocco A, Franklin K, Villegas A, Ahmed R, She YM, Johnson RP: ***Escherichia coli* O157:H7 typing phage V7 is a T4-like virus.** *J Virol* 2012, **86**:10246–10251.
  31. Kropinski AM, Kovalyova IV, Billington SJ, Butts BD, Patrick AN, Guichard JA, Hutson SM, Sydlaske AD, Day KR, Falk DR, McConnell MR: **The genome of  $\epsilon$ 15, a serotype-converting, Group E1 *Salmonella enterica*-specific bacteriophage.** *Virology* 2007, **369**:234–244.
  32. Waddell TE, Mazzocco A, Pacan J, Johnson R, Ahmed R, Poppe C, Khakhria C: **Use of bacteriophages to control *Escherichia coli* O157 infections in cattle.** *United States Patent No* 2002, **6**:485,902.
  33. Waddell T, Mazzocco A, Johnson R, Pacan J, Campbell S, Perets A, MacKinnon J, Holtslander B, Poppe C, Gyles C: **Control of *Escherichia coli* O157:H7 infection of calves by bacteriophages.** 1st edition. Kyoto, Japan: Fourth International Symposium and Workshop on Shiga toxin (verocytotoxin)-producing *Escherichia coli* (VTEC 2000); 2000:1–2.
  34. Ochman H, Selander RK: **Standard reference strains of *Escherichia coli* from natural populations.** *J Bacteriol* 1984, **157**:690–693.
  35. Lior H: **Classification of *Escherichia coli*.** In *Escherichia coli in Domestic Animals and Humans*. Edited by Gyles CL. Wallingford, UK: CAB International; 1994:31–72.
  36. Kropinski AM: **Sequence of the genome of the temperate, serotype-converting, *Pseudomonas aeruginosa* bacteriophage D3.** *J Bacteriol* 2000, **182**:6066–6074.
  37. Lowe TM, Eddy SR: **tRNAscan-SE: a program for improved detection of transfer RNA genes in genomic sequence.** *Nucleic Acids Res* 1997, **25**:955–964.
  38. Laslett D, Canback B: **ARAGORN, a program to detect tRNA genes and tmRNA genes in nucleotide sequences.** *Nucleic Acids Res* 2004, **32**:11–16.
  39. Santos SB, Kropinski AM, Ceyssens PJ, Ackermann HW, Villegas A, Lavigne R, Krylov VN, Carvalho CM, Ferreira EC, Azeredo J: **Genomic and proteomic characterization of the broad-host-range *Salmonella* phage PVP-SE1: creation of a new phage genus.** *J Virol* 2011, **85**:11265–11273.
  40. Sonnhammer ELL, von Heijne G, Krogh A: **A hidden Markov model for predicting transmembrane helices in protein sequences.** In *Proceedings of the Sixth International Conference on Intelligent Systems for Molecular Biology*. Edited by Glasgow J, Littlejohn T, Major F, Lathrop R, Sankoff D, Sensen C. Menlo Park, CA: AAAI Press; 1998:175–182.
  41. Kall L, Krogh A, Sonnhammer EL: **A combined transmembrane topology and signal peptide prediction method.** *J Mol Biol* 2004, **338**:1027–1036.
  42. Miller EC, Kutter E, Mosig G, Arisaka F, Kunisawa T, Ruger W: **Bacteriophage T4 genome.** *Microbiol Mol Biol Rev* 2003, **67**:86–156.
  43. Bailey TL, Elkan C: **The value of prior knowledge in discovering motifs with MEME.** *ISMB* 1995, **3**:21–29.
  44. Kassavetis GA, Butler ET, Roulland D, Chamberlin MJ: **Bacteriophage SP6-specific RNA polymerase. II. Mapping of SP6 DNA and selective in vitro transcription.** *J Biol Chem* 1982, **257**:5779–5788.
  45. Geiduschek EP, Kassavetis GA: **Transcription of the T4 late genes.** *Viral J* 2010, **7**:288.
  46. Lundin D, Torrents E, Poole AM, Sjoberg BM: **RNRdb, a curated database of the universal enzyme family ribonucleotide reductase, reveals a high level of misannotation in sequences deposited to Genbank.** *BMC Genomics* 2009, **10**:589.
  47. Kropinski AM, Lingohr EJ, Ackermann HW: **The genome sequence of enterobacterial phage 7–11, which possesses an unusually elongated head.** *Arch Virol* 2011, **156**:149–151.
  48. Morello E, Saussereau E, Maura D, Huerre M, Touqui L, Debarbieux L: **Pulmonary bacteriophage therapy on *Pseudomonas aeruginosa* cystic fibrosis strains: first steps towards treatment and prevention.** *PLoS One* 2011, **6**:e16963.
  49. Shin H, Lee JH, Kim Y, Ryu S: **Complete genome sequence of *Cronobacter sakazakii* bacteriophage CR3.** *J Virol* 2012, **86**:6367–6368.
  50. Grigoriev A: **Analyzing genomes with cumulative skew diagrams.** *Nucleic Acids Res* 1998, **26**:2286–2290.
  51. Lobry JR, Lobry C: **Evolution of DNA base composition under no-strand-bias conditions when the substitution rates are not constant.** *Mol Biol Evol* 1999, **16**:719–723.
  52. Lobry JR: **Genomic landscapes.** *Microbiology Today* 1999, **26**:164–165.
  53. Grigoriev A: **Strand-specific compositional asymmetries in double-stranded DNA viruses.** *Virus Res* 1999, **60**:1–19.
  54. Hildebrand A, Remmert M, Biegert A, Soding J: **Fast and accurate automatic structure prediction with HHpred.** *Proteins* 2009, **77**(Suppl 9):128–132.
  55. Kostyuchenko VA, Leiman PG, Chipman PR, Kanamaru S, van Raaij MJ, Arisaka F, Mesyanzhinov VV, Rossmann MG: **Three-dimensional structure of bacteriophage T4 baseplate.** *Nat Struct Biol* 2003, **10**:688–693.
  56. Pearson WR, Wood T, Zhang Z, Miller W: **Comparison of DNA sequences with protein sequences.** *Genomics* 1997, **46**:24–36.
  57. Lupas A: **Predicting coiled-coil regions in proteins.** *Curr Opin Struct Biol* 1997, **7**:388–393.
  58. Lupas A, Van DM, Stock J: **Predicting coiled coils from protein sequences.** *Science* 1991, **252**:1162–1164.
  59. Schwarzer D, Buettner FF, Browning C, Nazarov S, Rabsch W, Bethe A, Oberbeck A, Bowman VD, Stummeyer K, Muhlenhoff M, Leiman PG, Gerardy-Schahn R: **A multivalent adsorption apparatus explains the broad host range of phage phi92: a comprehensive genomic and structural analysis.** *J Virol* 2012, **86**:10384–10398.
  60. Mikkonen M, Alatossava T: **A group I intron in the terminase gene of *Lactobacillus delbrueckii* subsp. *lactis* phage LL-H.** *Microbiology* 1995, **141**:2183–2190.
  61. Young R: **Bacteriophage lysis: mechanism and regulation.** *Microbiol Rev* 1992, **56**:430–481.
  62. Grundling A, Blasi U, Young R: **Biochemical and genetic evidence for three transmembrane domains in the class I holin, lambda S.** *J Biol Chem* 2000, **275**:769–776.
  63. Young R, Blasi U: **Holins: form and function in bacteriophage lysis.** *FEMS Microbiol Rev* 1995, **17**:191–205.
  64. Pickard D, Thomson NR, Baker S, Wain J, Pardo M, Goulding D, Hamlin N, Choudhary J, Threfall J, Dougan G: **Molecular characterization of the *Salmonella enterica* serovar Typhi Vi-typing bacteriophage E1.** *J Bacteriol* 2008, **190**:2580–2587.
  65. The National Microbiology Laboratory (NML) and Centre for Food-borne Environmental and Zoonotic Infectious Diseases (CFEZID) PHAoC, Provincial Public Health Microbiology Laboratories: **2009 Annual Summary of Laboratory Surveillance Data, Including Serotype and Phage Types Tables for 2007–2009, NESP and NML.** 2009. <http://www.nml-ilm.gc.ca/NESP-PNSME/surveillance-2009-eng.html>.
  66. Viscardi M, Perugini AG, Auriemma C, Capuano F, Morabito S, Kim KP, Loessner MJ, Iovane G: **Isolation and characterisation of two novel coliphages with high potential to control antibiotic-resistant pathogenic *Escherichia coli* (EHEC and EPEC).** *Int J Antimicrob Agents* 2008, **31**:152–157.
  67. Fischer D, Eisenberg D: **Finding families for genomic ORFans.** *Bioinformatics* 1999, **15**:759–762.
  68. Yin Y, Fischer D: **Identification and investigation of ORFans in the viral world.** *BMC Genomics* 2008, **9**:24.
  69. Truncaite L, Simoliunas E, Zajackauskaite A, Kaliniene L, Mankeviciute R, Stanilius J, Klaus V, Meskys R: **Bacteriophage vB\_EcoM\_FV3: a new member of "rv5-like viruses".** *Arch Virol* 2012, **157**:2431–2435.
  70. Tsonos J, Adriaenssens EM, Klumpp J, Hernalsteens JP, Lavigne R, De GH: **Complete genome sequence of the novel *Escherichia coli* phage phiAPEC8.** *J Virol* 2012, **86**:13117–13118.
  71. Abbasifar R, Kropinski AM, Sabour PM, Ackermann HW, Alanis VA, Abbasifar A, Griffiths MW: **Genome sequence of *Cronobacter sakazakii* myovirus vB\_CsaM\_GAP31.** *J Virol* 2012, **86**:13830–13831.
  72. Ceyssens PJ, Brabban A, Rogge L, Lewis MS, Pickard D, Goulding D, Dougan G, Noben JP, Kropinski A, Kutter E, Lavigne R: **Molecular and physiological analysis of three *Pseudomonas aeruginosa* phages belonging to the "N4-like viruses".** *Virology* 2010, **405**:26–30.
  73. Ceyssens PJ, Miroshnikov K, Mattheus WS, Krylov V, Robben J, Noben JP, Vanderschraeghe S, Sykilinda N, Kropinski AM, Volckaert G, Mesyanzhinov V, Lavigne R: **Comparative analysis of the widespread and conserved PB1-like viruses infecting *Pseudomonas aeruginosa*.** *Environ Microbiol* 2009, **11**:2874–2883.

74. Ceyssens PJ, Glonti T, Kropinski NM, Lavigne R, Chanishvili N, Kulakov L, Lashkhi N, Tediashvili M, Merabishvili M: **Phenotypic and genotypic variations within a single bacteriophage species.** *Virology* 2011, **418**:134.
75. Lavigne R, Seto D, Mahadevan P, Ackermann H-W, Kropinski AM: **Unifying classical and molecular taxonomic classification: analysis of the *Podoviridae* using BLASTP-based tools.** *Res Microbiol* 2008, **159**:406–414.
76. Pedulla ML, Ford ME, Houtz JM, Karthikeyan T, Wadsworth C, Lewis JA, Jacobs-Sera D, Falbo J, Gross J, Pannunzio NR, Brucker W, Kumar V, Kandasamy J, Keenan L, Bardarov S, Kriakov J, Lawrence JG, Jacobs WR Jr, Hendrix RW, Hatfull GF: **Origins of highly mosaic mycobacteriophage genomes.** *Cell* 2003, **113**:171–182.
77. Darling AE, Mau B, Perna NT: **progressiveMauve: multiple genome alignment with gene gain, loss and rearrangement.** *PLoS One* 2010, **5**:e11147.
78. Voelker R, Sulakvelidze A, Ackermann HW: **Spontaneous tail length variation in a *Salmonella* myovirus.** *Virus Res* 2005, **114**:164–166.
79. Yamamoto KR, Alberts BM, Benzing R, Lawhorne L, Treiber G: **Rapid bacteriophage sedimentation in the presence of polyethylene glycol and its application to large-scale virus purification.** *Virology* 1970, **40**:734–744.
80. Sambrook J, Russell DW: *Molecular Cloning: A Laboratory Manual*. 3rd edition. Cold Spring Harbor, New York: Cold Spring Harbor Press; 2001.
81. Lingohr E, Frost S, Johnson RP: **Determination of bacteriophage genome size by pulsed-field gel electrophoresis.** *Methods Mol Biol* 2009, **502**:19–25.
82. Altschul SF, Gish W, Miller W, Myers EW, Lipman DJ: **Basic local alignment search tool.** *J Mol Biol* 1990, **215**:403–410.
83. Altschul SF, Madden TL, Schaffer AA, Zhang J, Zhang Z, Miller W, Lipman DJ: **Gapped BLAST and PSI-BLAST: a new generation of protein database search programs.** *Nucleic Acids Res* 1997, **25**:3389–4022.
84. Soding J, Biegert A, Lupas AN: **The HHpred interactive server for protein homology detection and structure prediction.** *Nucleic Acids Res* 2005, **33**:W244–W248.
85. Marchler-Bauer A, Lu S, Anderson JB, Chitsaz F, Derbyshire MK, DeWeese-Scott C, Fong JH, Geer LY, Geer RC, Gonzales NR, Gwadz M, Hurwitz DL, Jackson JD, Ke Z, Lanczycki CJ, Lu F, Marchler GH, Mullokandov M, Omelchenko MV, Robertson CL, Song JS, Thanki N, Yamashita RA, Zhang D, Zhang N, Zheng C, Bryant SH: **CDD: a conserved domain database for the functional annotation of proteins.** *Nucleic Acids Res* 2011, **39**:D225–D229.
86. Derbyshire MK, Lanczycki CJ, Bryant SH, Marchler-Bauer A: **Annotation of functional sites with the Conserved Domain Database.** *Database* 2012. 2012:bar058.
87. Macke TJ, Ecker DJ, Gutell RR, Gautheret D, Case DA, Sampath R: **RNA Motif, an RNA secondary structure definition and search algorithm.** *Nucleic Acids Res* 2001, **29**:4724–4735.
88. Zuker M, Zuker M: **Mfold web server for nucleic acid folding and hybridization prediction.** *Nucleic Acids Res* 2003, **31**:3406–3415.
89. Bailey TL, Elkan C: *Fitting a mixture model by expectation maximization to discover motifs in biopolymers.* Menlo Park, CA USA: AAAI Press; 1994:28–36.
90. Zafar N, Mazumder R, Seto D: **CoreGenes: a computational tool for identifying and cataloging “core” genes in a set of small genomes.** *BMC Bioinforma* 2002, **3**:12.
91. Kropinski AM, Borodovsky M, Carver TJ, Cerdeno-Tarraga AM, Darling A, Lomsadze A, Mahadevan P, Stothard P, Seto D, Van DG, Wishart DS: **In silico identification of genes in bacteriophage DNA.** *Methods Mol Biol* 2009, **502**:57–89.
92. Dereeper A, Guignon V, Blanc G, Audic S, Buffet S, Chevenet F, Dufayard JF, Guindon S, Lefort V, Lescot M, Claverie JM, Gascuel O: **Phylogeny.fr: robust phylogenetic analysis for the non-specialist.** *Nucleic Acids Res* 2008, **36**:W465–W469.
93. Washburn MP, Wolters D, Yates JR III, Washburn MP, Wolters D, Yates JR: **Large-scale analysis of the yeast proteome by multidimensional protein identification technology.** *Nat Biotechnol* 2001, **19**:242–247.
94. Tabb DL, McDonald WH, Yates JR III, Tabb DL, McDonald WH, Yates JR: **DTASelect and Contrast: tools for assembling and comparing protein identifications from shotgun proteomics.** *J Proteome Res* 2002, **1**:21–26.

doi:10.1186/1743-422X-10-76

Cite this article as: Kropinski et al.: The host-range, genomics and proteomics of *Escherichia coli* O157:H7 bacteriophage rV5. *Virology Journal* 2013 **10**:76.

Submit your next manuscript to BioMed Central and take full advantage of:

- Convenient online submission
- Thorough peer review
- No space constraints or color figure charges
- Immediate publication on acceptance
- Inclusion in PubMed, CAS, Scopus and Google Scholar
- Research which is freely available for redistribution

Submit your manuscript at  
www.biomedcentral.com/submit

