

Research

Open Access

Repolarization of the action potential enabled by Na⁺ channel deactivation in PSpice simulation of cardiac muscle propagation

Lakshminarayanan Ramasamy¹ and Nicholas Sperelakis*²

Address: ¹Dept. of Electrical Computer Engineering and Computer Science, University of Cincinnati College of Engineering, Cincinnati, OH 45219, USA and ²Dept. of Molecular & Cellular Physiology, University of Cincinnati College of Medicine, Cincinnati, OH 45267-0576, USA

Email: Lakshminarayanan Ramasamy - laksnarayana@yahoo.com; Nicholas Sperelakis* - spereln@ucmail.uc.edu

* Corresponding author

Published: 12 December 2005

Received: 08 November 2005

Theoretical Biology and Medical Modelling 2005, **2**:48 doi:10.1186/1742-4682-2-48

Accepted: 12 December 2005

This article is available from: <http://www.tbiomed.com/content/2/1/48>

© 2005 Ramasamy and Sperelakis; licensee BioMed Central Ltd.

This is an Open Access article distributed under the terms of the Creative Commons Attribution License (<http://creativecommons.org/licenses/by/2.0>), which permits unrestricted use, distribution, and reproduction in any medium, provided the original work is properly cited.

Abstract

Background: In previous studies on propagation of simulated action potentials (APs) in cardiac muscle using PSpice modeling, we reported that a second black-box (BB) could not be inserted into the K⁺ leg of the basic membrane unit because that caused the PSpice program to become very unstable. Therefore, only the rising phase of the APs could be simulated. This restriction was acceptable since only the mechanism of transmission of excitation from one cell to the next was being investigated.

Methods and results: We have now been able to repolarize the AP by inserting a second BB into the Na⁺ leg of the basic units. This second BB effectively mimicked deactivation of the Na⁺ channel conductance. This produced repolarization of the AP, not by activation of K⁺ conductance, but by deactivation of the Na⁺ conductance. The propagation of complete APs was studied in a chain (strand) of 10 cardiac muscle cells, in which various numbers of gap-junction (gj) channels (assumed to be 100 pS each) were inserted across the cell junctions. The shunt resistance across the junctions produced by the gj-channels (R_{gj}) was varied from 100,000 M Ω (0 gj-channels) to 10,000 M Ω (1 gj-channel), to 1,000 M Ω (10 channels), to 100 M Ω (100 channels), and 10 M Ω (1000 channels). The velocity of propagation (θ , in cm/s) was calculated from the measured total propagation time (TPT, the time difference between when the AP rising phase of the first cell and the last cell crossed -20 mV, assuming a cell length of 150 μ m). When there were no gj-channels, or only a few, the transmission of excitation between cells was produced by the electric field (EF), i.e. the negative junctional cleft potential, that is generated in the narrow junctional clefts (e.g. 100 A) when the prejunctional membrane fires an AP. When there were many gj-channels (e.g. 1000 or 10,000), the transmission of excitation was produced by local-circuit current flow from one cell to the next through the gj-channels.

Conclusion: We have now been able to simulate complete APs in cardiac muscle cells that could propagate along a single chain of 10 cells, even when there were no gj-channels between the cells.

Background

There are no low-resistance connections between the cells in several different cardiac muscle and smooth muscle

preparations [1-3]. In a computer simulation study of propagation in cardiac muscle, it was shown that the electric field (EF) generated in the narrow junctional clefts

when the prejunctional membrane fires an action potential (AP) depolarizes the postjunctional membrane to its threshold [4-7]. This results in excitation of the postjunctional cell after a brief junctional delay. The total propagation time consists primarily of the summed junctional delays. This results in a staircase-shaped propagation, the surface sarcolemma of each cell firing almost simultaneously [5]. Propagation has been shown to be discontinuous (or saltatory) in cardiac muscle [8-11]. Fast Na⁺ channels are localized in the junctional membranes of the intercalated disks in cardiac muscle [6,12,13], a requirement for the EF mechanism to work [4,5]. Propagation in the heart still occurs in connexin-43 and Cx40 knockout mice, but it is slowed [14-17], as predicted by our PSpice simulation study.

We have modeled APs in cardiac muscle using the PSpice program for circuit design and analysis, and we have corroborated our earlier reports that the EF developed in the junctional cleft is sufficiently large to allow the transfer of excitation without the requirement for a gap junction [7,18,19]. In those studies, we found that a second black-box (BB-2) could not be inserted into the K⁺ leg of the Hodgkin-Huxley circuit of the basic membrane units because that caused the PSpice program to become very erratic and unstable. Therefore, only the rising phase of the APs was simulated. This defect in the program was acceptable since only the mechanism(s) for the transfer of excitation from one cell to the next was under investigation; for this purpose, only the fast rising phase of the AP was necessary. The purpose of the present study was to determine whether another method for repolarization could be devised that would circumvent the instability problem. We inserted a second BB (BB-2) into the same leg as the first (BB-1), i.e. the Na⁺ leg, to mimic the deactivation of the Na⁺ channel and thereby produce repolarization of the AP. This method worked, as it did in the case of smooth muscle and the Ca²⁺ channel [18]. Thus, repolarization was produced not by activation of the K⁺ conductance, but instead by deactivation of the Na⁺ conductance.

Methods

Details of the methods and circuit parameters used for cardiac muscle were described previously [3,7]. There were two surface membrane units in each cell (one facing upwards and one inverted) and one unit for each of the junctional membranes. The values for the circuit parameters used (standard conditions) are listed in Table 1. The cardiac muscle cell was assumed to be a cylinder 150 μm long and 16 μm in diameter. The cell input resistance was assumed to be 20 MΩ. A junctional tortuosity (interdigitation) factor of 4 was assumed for the cell junction [3]. The junctional cleft potential (V_{jC}) is produced across R_{jC}, the radial resistance of the narrow and tortuous junctional

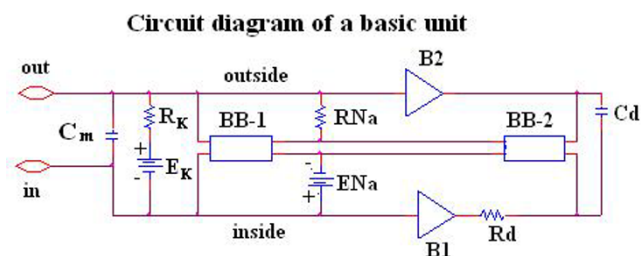
Table 1: Parameter values used under standard conditions.

Parameters	Surface unit	Junctional Unit
C _m (fF)	300	30
R _K (MΩ)	71	710
R _{Na} (MΩ)	710	7100
E _K (mV)	-94	-94
E _{Na} (mV)	+60	+60
R _d (MΩ)	5000	5000
C _d (pF)	30	30
	Common	
R _{or} (KΩ)	1.0	
R _{oi} (KΩ)	1.0	
R _i (KΩ)	100	
R _{jC} (MΩ)	20 (40 / 2)	
R _{BT} (KΩ)	1.0	

cleft. The junctional cleft contained two radial resistances (R_{jC}) of 40 MΩ each in parallel (i.e. R_{jC} = 20 MΩ). The value assigned to R_{jC} reflects the thickness of the junctional gap (end-to-end) and the tortuosity factor.

The circuit used for each unit was kept as simple as possible, using only those ion channels that set the resting potential (RP) and predominate during the rising phase of the AP. The RP was -80 mV and the overshoot potential was +30 mV (AP amplitude of 110 mV). Because the PSpice program does not have a V-dependent resistance to represent the increase in conductance for Na⁺ ions during excitation, this function was simulated by a V-controlled current source (our "black-box", BB) in each of the basic circuit units. The current output of the BB at various membrane voltages was calculated assuming a sigmoidal relationship between membrane voltage and resistance.

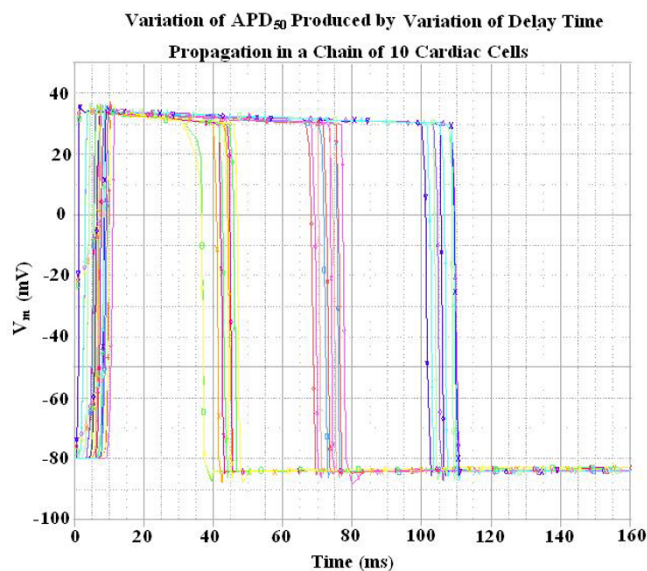
Our novel approach to simulation of the entire action potential (AP) waveform was achieved by inserting a second BB into the sodium leg (Na⁺) of the basic unit. Thus, the first BB mimics Na⁺ activation, and the second BB mimics deactivation of the Na⁺-channel conductance. The latter allowed repolarization of the AP to occur. BB-2 is connected between the outside and inside of the membrane unit, with reversed polarity compared to BB-1, as shown in Figure 1. The outputs of BB-1 and BB-2 were tied together in such a way that BB-2's output current nullifies BB-1's output current. BB-2 was activated with a delay time corresponding to the physiological delay value (i.e. to give an appropriate APD₅₀). The required delay time was generated using a delay element R_d, C_d (RC time constant), as shown in Figure 1. Figure 2 illustrates how the duration of the cardiac action potentials (APD₅₀) in the chain of 10 cells can be varied over a wide range by changing the RC time constant. As can be seen, decreasing the delay time results in shortening of the AP.

**Figure 1**

Circuit diagram for one of the basic units. The unit circuitry was the same for both the surface units and junctional units, but the values of the various components were adjusted to reflect the long surface membrane and short junctional membrane. These values are listed in Table 1. The GTABLE values for the two types of membrane were also different, and these are listed in Table 2. Note that there are two black-boxes (BB) in the basic unit, and both are in the same leg of the Hodgkin-Huxley circuit, namely the Na^+ conductance leg. The first BB produced activation of the Na^+ conductance, and the second produced deactivation of the Na^+ channel conductance. It was necessary to produce a time delay (RC time constant) before the second BB came into play to cause deactivation. The two operational amplifiers (unit gain) acted as buffers. In the K^+ leg, the K^+ conductance is in series with E_K , the K^+ equilibrium potential.

At the resting potential, BB-2's output current is set to 0 nA. Once the cell has fired using BB-1's current, the potential across the input of BB-2 starts increasing with a rate corresponding to the RC time constant of the delay element. Thereby, BB-2 starts responding to the rising input voltage. Two buffer elements (unity gain operational amplifiers) were added to isolate the input terminal of BB-2 from BB-1. Thus, any hindrance of BB1's function by BB-2 was avoided.

The cells in the chain were either connected by low-resistance pathways (gap-junction channels) or not interconnected, so that transmission of excitation from one cell to the next had to be by the electric field (EF) developed in the narrow junctional cleft. The ends of the chain had a bundle termination resistance (R_{BT}) of 1.0 $\text{K}\Omega$ to mimic the physiological condition. Electrical stimulation (rectangular current pulses of 0.25 nA and 0.50 ms duration) was applied to the inside of the first cell of the chain (cell #1). To minimize confusion, the voltage was recorded from only one surface unit (upward-facing) in each cell. Propagation velocity was calculated from the total propagation time (TPT), measured as the difference between the times when the APs (rising phase) of the first cell and that of the last cell crossed -20 mV; the cell length was assumed to be 150 μm .

**Figure 2**

Records showing how variations in the delay time (RC time constant), controlling the activation of the second black box (BB-2), affected the duration of the action potentials (APD_{50}). The records were obtained with propagation in a chain of 10 cells. Shortening the delay time produced shortening of the APD_{50} .

Results

The AP waveform and propagation down the chain of 10 cells is illustrated in Figure 3. To avoid confusion, records are illustrated for only cells 1, 5 and 10. Propagation was studied with various numbers of gj-channels traversing the cell junctions, namely 0, 1, 10, 100 and 1,000. Assuming each gj-channel has a conductance of 100 pS, these channels corresponded to shunt resistances across each junction (R_{gj}) of 100,000 $\text{M}\Omega$, 10,000 $\text{M}\Omega$, 1,000 $\text{M}\Omega$ and 100 $\text{M}\Omega$, respectively. The corresponding records are shown in panels A, B, C and D of Figure 3.

When there were no gj-channels (A), or only one channel (B), fast propagation still occurred, which was initiated by the EF mechanism. When there are many gj-channels (e.g., 1000 (D)), then the APs of all 10 cells are superimposed. Thus, the TPT (measured at a V_m of -20 mV) is that of a single AP, which is approximately 0.004 ms in panel D. Hence, the propagation velocity (θ) appears to be nearly infinite.

Figure 4 shows a plot of θ as a function of R_{gj} . As R_{gj} decreases (reflecting more and more gj-channels), θ increases. These data are also summarized in Table 3 to facilitate quantitative comparison.

Propagation of action potentials along a chain of 10 cardiac muscle cells
Entire action potentials are depicted for 3 cells.

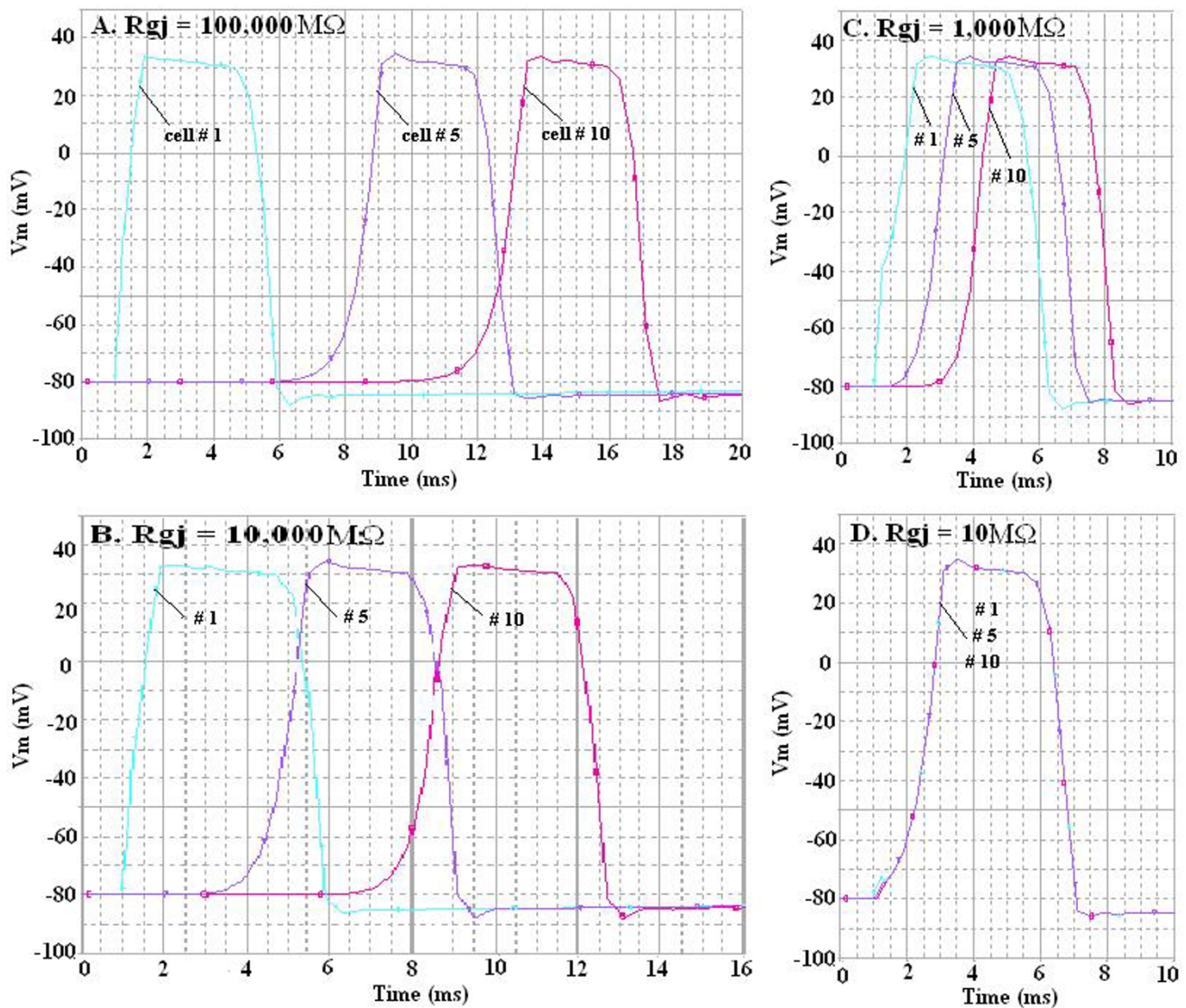


Figure 3

Propagation of APs simulated by PSpice along a chain of ten cardiac muscle cells. The entire AP is depicted, but to avoid confusion the records illustrate only three of the cells: cells # 1, 5 and 10. The four panels show the effect of varying the number of g_j -channels from zero (panel A, $R_{gj} = 100,000 M\Omega$), to one (panel B, $R_{gj} = 10,000 M\Omega$), to 10 (panel C, $R_{gj} = 1,000 M\Omega$), to 1000 (panel D, $R_{gj} = 10 M\Omega$). When there were many g_j -channels (D), the APs of all 10 cells were superimposed, indicating extremely fast propagation velocity.

Discussion

The present results demonstrate that we can simulate the entire cardiac AP, both the rising phase and the falling phase, using PSpice. Since a second BB (BB-2) could not be inserted into the K^+ leg of the basic Hodgkin-Huxley membrane units because of instability in the PSpice pro-

gram, the problem was solved by inserting the BB-2 into the Na^+ leg to produce deactivation of the Na^+ conductance turned on by the first BB (BB-1). BB-2 supplied current in the opposite polarity to that supplied by BB-1, essentially canceling it out and giving a net current of zero. BB-2 supplied its current after a time delay provided by an

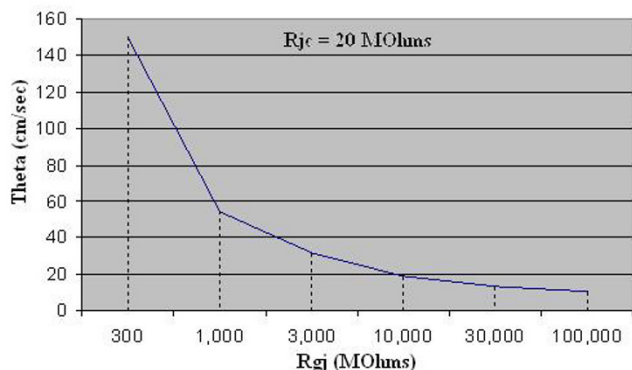


Figure 4
Graphic summary of the propagation velocity (θ) as a function of the shunt resistance across the 9 cell junctions (R_{gj}). TPT was the difference between the times when the AP of cell #1 and cell #10 crossed a V_m of -20 mV. The velocity (θ) was calculated from the TPT assuming a cell length of 150 μ m. Assuming the conductance of the gj-channel is 100 pS, the R_{gj} values of 10, 100, 1,000, 10,000 and 100,000 M Ω correspond to the number of gj-channels of 1,000, 100, 10, 1.0 and 0. For the purpose of graphic presentation, runs were also made for R_{gj} values of 30, 300, 3,000 and 30,000.

RC time constant. Thus, BB-1 produced the rising phase of the AP and BB-2 produced the falling (repolarizing) phase. Therefore, it is now possible to use the PSpice program to study propagation of complete APs in single strands and in two-dimensional sheets (parallel strands).

When there were no low-resistance connections or gj-channels between the cells, propagation was still rapid because of the EF mechanism. When there were many gj-channels (e.g. 1000), the propagation velocity became extremely fast, i.e. non-physiological.

The after-hyperpolarization produced following the polarization of the AP (e.g. see Fig. 2), equivalent to the physiological hyperpolarizing after-potential seen in some excitable cells (e.g. smooth muscle cells, cardiac pacemaker cells and neurons), is due to a "feed-forward" mechanism. When BB-2 is supplying its opposing current and producing partial repolarization of the AP, the current supplied by BB-1 starts to decrease because the BB-GT-ABLE is reversible [19]. Therefore, BB-2 supplies an excess of current, causing the after-hyperpolarization.

The PSpice modeling techniques can be used to study propagation of excitation in various tissues including cardiac muscle, smooth muscle and neurons. The method should provide insight into the mechanisms by which some heart arrhythmias are generated. In neurons, one

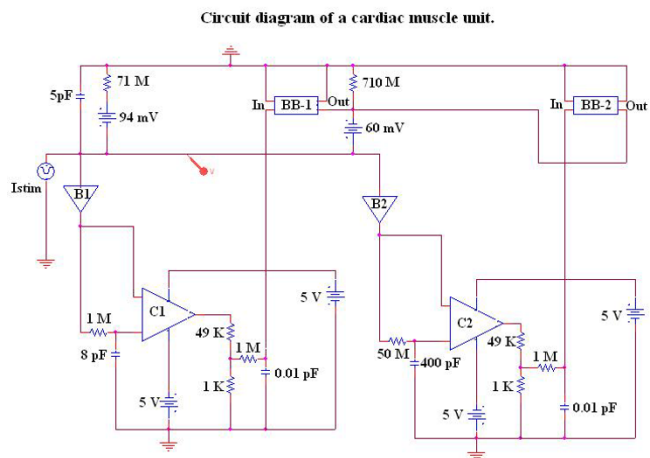


Figure 5
Diagram of the circuit used to show a more accurately modeled cardiac action potential with spike and plateau components.

could examine saltatory conduction and the effect of various degrees of demyelination, as in MS.

Conclusion

As in the case of smooth muscle [18], we have been able to produce complete cardiac APs in PSpice simulation by placing a second BB (BB-2) into the Na⁺ leg of the basic membrane units, which supplied an opposing current

Action potential generated by the more complicated circuit shown in Fig 5.

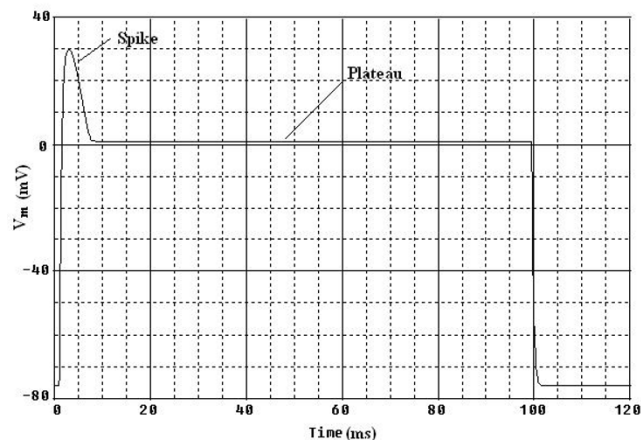


Figure 6
Action potential generated by the more complex circuit given in Fig 5. It was possible with this circuit to generate an AP waveform for cardiac muscle cells with spike and plateau components. This figure should be compared with Fig 2.

Table 3: Summary of TPT and θ values as a function of number of gap-junction channels.

Number of gap-junction channels #	Rgj (M Ω)	TPT (ms)	Θ (cm/s)
0	100,000	12.9	10.4
1	10,000	7.1	19.0
10	1,000	2.5	54.0
100	100	0.2	675
1,000	10	0.0004	337500

Each gap-junction channel was assumed to have a conductance of 100 picosiemens (pS)

Table 2: Black-box values (GTABLE) for surface membrane unit and junctional membrane unit.

A. Surface membrane unit			
Black-box #1		Black-box #2	
Voltage (mV)	Current (nA)	Voltage (mV)	Current (nA)
-80	0	-80	0
+30	-1.77	+30	+1.0

B. Junctional membrane unit			
Black-box #1		Black-box #2	
Voltage (mV)	Current (nA)	Voltage (mV)	Current (nA)
-80	0	-80	0
+30	-0.177	+30	+0.10

We found that the two entries into the GTABLE are sufficient to obtain the waveform desired.

after a short time delay. This opposing current essentially deactivated the inward Na⁺ current that was supplied by BB-1. Propagation in cardiac muscle occurred at physiological velocities when either no gj-channels or only one gj-channel was present. The propagation velocity became very fast and non-physiological when many gj-channels were present (e.g. 100 or 1000).

The Appendix presents a more complicated circuit for regulating the shape of the cardiac AP (e.g. to produce the typical spike and plateau of the cardiac action potential).

Appendix

The circuit shown in Figure 5 depicts the novel circuit design for achieving a closer comparison to the physiological waveform for the cardiac action potential. In this circuit, BB-1 mimics the function of the fast Na⁺ channel and BB-2 mimics the function of the slow Na⁺ channel. Each leg contains a buffer amplifier (unit gain), a comparator (open-loop operational amplifier) and a delay element (RC time constant). The two BBs function in such a way that the sum of their output currents is equal to the instantaneous current at any time. The RC time delay element contained in each leg produces a corresponding delay time (i.e. the fast Na⁺ channel leg has a shorter delay time

and the slow Na⁺ channel leg has a longer one). The buffer elements isolate both legs from BB-1 in order to avoid any hindrance in its function. The comparator is used to trigger the BBs with a fixed peak-to-peak voltage. The output of the comparator is connected to a voltage-divider network. The required voltage swing input for BB-1 and BB-2 is 110 mV. Since the comparator produces a rail-to-rail output voltage swing (-5 V to +5 V), the voltage-divider network circuit is used to scale down the output voltage swing from 10 V to 110 mV. An additional RC delay element was added at the inputs of BB-1 and BB-2 to smooth the edges of the AP. Using this method, one can include additional legs as needed to mimic the more ideal AP. The output waveform shown in Figure 6 was obtained by applying an I_{stim} (current stimulus signal) at the inside surface of the cell.

References

1. Sperelakis N: **An electric field mechanism for transmission of excitation between myocardial cells.** *Circ Res* 2002, **91**:985-987.
2. Sperelakis N, McConnell K: **Electric field interactions between closely abutting excitable cells.** *IEEE-Eng Med Biol* 2002, **21**:77-89.
3. Sperelakis N, Ramasamy L: **Propagation in cardiac muscle and smooth muscle based on electric field transmission at cell junctions: An analysis by PSpice.** *IEEE-Eng Med Biol* 2002, **21**:130-143.

4. Sperelakis N, Mann JE Jr: **Evaluation of electric field changes in the cleft between excitable cells.** *J Theor Biol* 1977, **64**:71-96.
5. Picone JB, Sperelakis N, Mann JE Jr: **Expanded model of the electric field: Hypothesis for propagation in cardiac muscle.** *Math and computer modeling* 1991, **15**:17-35.
6. Kucera JP, Rohr S, Rudy Y: **Localization of sodium channels in intercalated disks modulates cardiac conduction.** *Circ Res* 2002, **91**:1176-1182.
7. Sperelakis N, Murali KPV: **Combined electric field and gap junctions on propagation of action potentials in cardiac muscle and smooth muscle in PSpice simulation.** *J Electrocardiol* 2003, **36**(4):279-293.
8. Spach MS, Miller WT, Geselowitz DB, Barr R, Kootsey JM, Johnson EA: **The discontinuous nature of propagation in normal canine cardiac muscle. Evidence for recurrent discontinuity of intracellular resistance that affects the membrane currents.** 2003.
9. Diaz PJ, Rudy Y, Plonsey R: **Intercalated discs as a cause for discontinuous propagation in cardiac muscle. A theoretical simulation.** *Ann Biomed Eng* 1983, **11**:177-189.
10. Shaw RM, Rudy Y: **Ionic mechanisms of propagation in cardiac tissue. Roles of the sodium and L-type calcium currents during reduced excitability and decreased gap junction coupling.** *Circ Res* 1997, **81**:727-741.
11. Henriquez AP, Vogel R, Muller-Borer BJ, Henriquez CS, Weingart R, Cascio WE: **Influence of dynamic gap junction resistance on impulse propagation in ventricular myocardium: a computer simulation study.** *Biophys J* 2001, **81**:2112-2121.
12. Cohen SA: **Immunocytochemical localization of rH1 sodium channel in adult rat heart atria and ventricle. Presence in terminal intercalated disks.** *Circulation* 1994, **74**:1071-1096.
13. Sperelakis N: **Cable properties and propagation of action potentials.** **CH 18. CellPhysiology Source Book 1st edition.** Academic Press Publishers. San Diego; 1995:245-254.
14. Morley GE, Vaidya D, Samie FH, Lo CW, Taffet SM, Delmar M, Jalife J: **Characterization of conduction in the ventricles of normal and heterozygous Cx43 knockout mice using optical mapping.** *J Cardiovasc Electrophysiol* 1999, **10**:1361-1375.
15. Tamaddon HS, Vaidya D, Simon AM, Paul DL, Jalife J, Morley GE: **High resolution optical mapping of the right bundle branch in connexin40 knockout mice reveals low conduction in the specialized conduction system.** *Circ Res* 2000, **87**:929-936.
16. Gutstein DE, Morley GE, Tamaddon H, Vaidya D, Schneider MD, Chen J, Chien KR, Stuhlmann H, Fishman GI: **Conduction slowing and sudden arrhythmic death in mice with cardiac restricted inactivation of connexin43.** *Circ Res* 2001, **88**:333-339.
17. Vaidya D, Tamaddon HS, Lo CW, Taffet SM, Delmar M, Morley GE: **Nullmutation of connexin43 causes slow propagation of ventricular activation in the late stages of mouse embryonic development.** *Circ Res* 2001, **88**:1196-1202.
18. Ramasamy L, Sperelakis N: **Action potential repolarization enabled by Ca⁺⁺ deactivation in PSpice simulation of smooth muscle propagation.** *Bio Med Eng Online* in press.
19. Sperelakis N, Ramasamy L, Kalloor B: **Propagated repolarization of simulated action potentials in cardiac muscle and smooth muscle.** *Theo Biol Med Modeling* 2005, **2**:5.

Publish with **BioMed Central** and every scientist can read your work free of charge

"BioMed Central will be the most significant development for disseminating the results of biomedical research in our lifetime."

Sir Paul Nurse, Cancer Research UK

Your research papers will be:

- available free of charge to the entire biomedical community
- peer reviewed and published immediately upon acceptance
- cited in PubMed and archived on PubMed Central
- yours — you keep the copyright

Submit your manuscript here:
http://www.biomedcentral.com/info/publishing_adv.asp

