



RESEARCH

Open Access

Effect of a governmentally-led physical activity program on motor skills in young children attending child care centers: a cluster randomized controlled trial

Antoine Bonvin^{1*}, Jérôme Barral¹, Tanja H Kakebeeke², Susi Kriemler³, Anouk Longchamp⁴, Christian Schindler⁵, Pedro Marques-Vidal⁶ and Jarden J Puder⁶

Abstract

Objective: To assess the effect of a governmentally-led center based child care physical activity program (Youp'là Bouge) on child motor skills.

Patients and methods: We conducted a single blinded cluster randomized controlled trial in 58 Swiss child care centers. Centers were randomly selected and 1:1 assigned to a control or intervention group. The intervention lasted from September 2009 to June 2010 and included training of the educators, adaptation of the child care built environment, parental involvement and daily physical activity. Motor skill was the primary outcome and body mass index (BMI), physical activity and quality of life secondary outcomes. The intervention implementation was also assessed.

Results: At baseline, 648 children present on the motor test day were included (age 3.3 ± 0.6 , BMI 16.3 ± 1.3 kg/m², 13.2% overweight, 49% girls) and 313 received the intervention. Relative to children in the control group (n = 201), children in the intervention group (n = 187) showed no significant increase in motor skills (delta of mean change (95% confidence interval: -0.2 (-0.8 to 0.3), p = 0.43) or in any of the secondary outcomes. Not all child care centers implemented all the intervention components. Within the intervention group, several predictors were positively associated with trial outcomes: 1) free-access to a movement space and parental information session for motor skills 2) highly motivated and trained educators for BMI 3) free-access to a movement space and purchase of mobile equipment for physical activity (all p < 0.05).

Conclusion: This "real-life" physical activity program in child care centers confirms the complexity of implementing an intervention outside a study setting and identified potentially relevant predictors that could improve future programs.

Trial registration: Clinical trials.gov NCT00967460

Keywords: Physical activity, Motor skills, Child care centers, Randomized controlled trial, Government

* Correspondence: antoine.bonvin@unil.ch

¹Institute of Sport Sciences, University of Lausanne, Quartier Unil - Mouline, Bâtiment Geopolis, Lausanne 1015, Switzerland

Full list of author information is available at the end of the article

Background

Participating in an adequate amount of physical activity is beneficial for the health of children (e.g. social development, obesity prevention, bone health) [1-3]. Over the past two decades, physical activity among children and adolescents has been decreasing at an alarming rate [4]. The causes of this complex problem are multifactorial. Less developed motor skills have been identified as a potential contributor to physical inactivity in young children [3]. Relationships between physical activity and motor skills are bidirectional and both physical activity and motor skills represent essential components for developmental processes of children and influence motor, cognitive or emotional aspects of children's health [3,5]. Thus, increasing physical activity provides more opportunities to promote neuromotor development [6,7], which reinforces motor competences. On the other hand, well-developed motor skills contribute to children's propensity to engage in physical activity [5,8]. Stodden et al. [3] suggest that the impact of physical activity or of motor skill competences is especially pronounced in young children. The more they are involved in active behaviors, the more they built a sufficiently adapted motor repertoire for specific movement contexts. In contrast, limited physical activity can contribute to impaired motor skills and motor coordination in older children which may in turn lead to poorer self-efficacy and lower life satisfaction [5,9]. Physical activity interventions in children have shown to have positive impact on self-esteem [10] and the effect of physical activity on quality of life is especially pronounced in obese children [1,11]. As the first years of life are crucial in determining later lifestyle behaviors and health [12-15], child care centers have been identified as important settings to deliver physical activity interventions to improve motor skills and prevent obesity [16-20]. They offer the advantage of involving a large number of young children and their educators are receptive for training [21]. Further, providing a supportive social environment and rearranging the existing built environment of the child care center can represent an attractive feasible low-cost non-curricular approach to increase physical activity [20]. However, a recent Cochrane collaboration review [22] has identified a need to study physical activity intervention in preschoolers. To our knowledge, few randomized preschool-based physical activity interventions have been performed [2,23-35]. There exist even fewer child care-based interventions targeting younger children, e.g. children aged 2-4 years [36,37]. Of the existing four controlled child care-based studies, two included slightly older children [30,34] (mean age 4.2 and 4.1 years respectively), one was small-sized and of short duration [37] ($n = 42$, 8 weeks duration), one was not randomized and did not measure physical activity [36] and two did not evaluate motor skills.

To fill the existing gap, our objective was to conduct a cluster randomized controlled trial (RCT) taking advantage of the implementation of a "real-life" physical activity program in child care centers ("Youp'là Bouge") carried out by the local governmental institutions. We thus hypothesized that the program would improve motor skills using age-specific motor tasks [38,39]. In addition, the study focused on possible effects on children's body mass index (BMI), their child-care-based physical activity level and their quality of life. Based on results of previously published studies [40-44], our aim was also to evaluate the impact of certain predictors that have been associated with improved outcomes within a physical activity intervention.

Methods

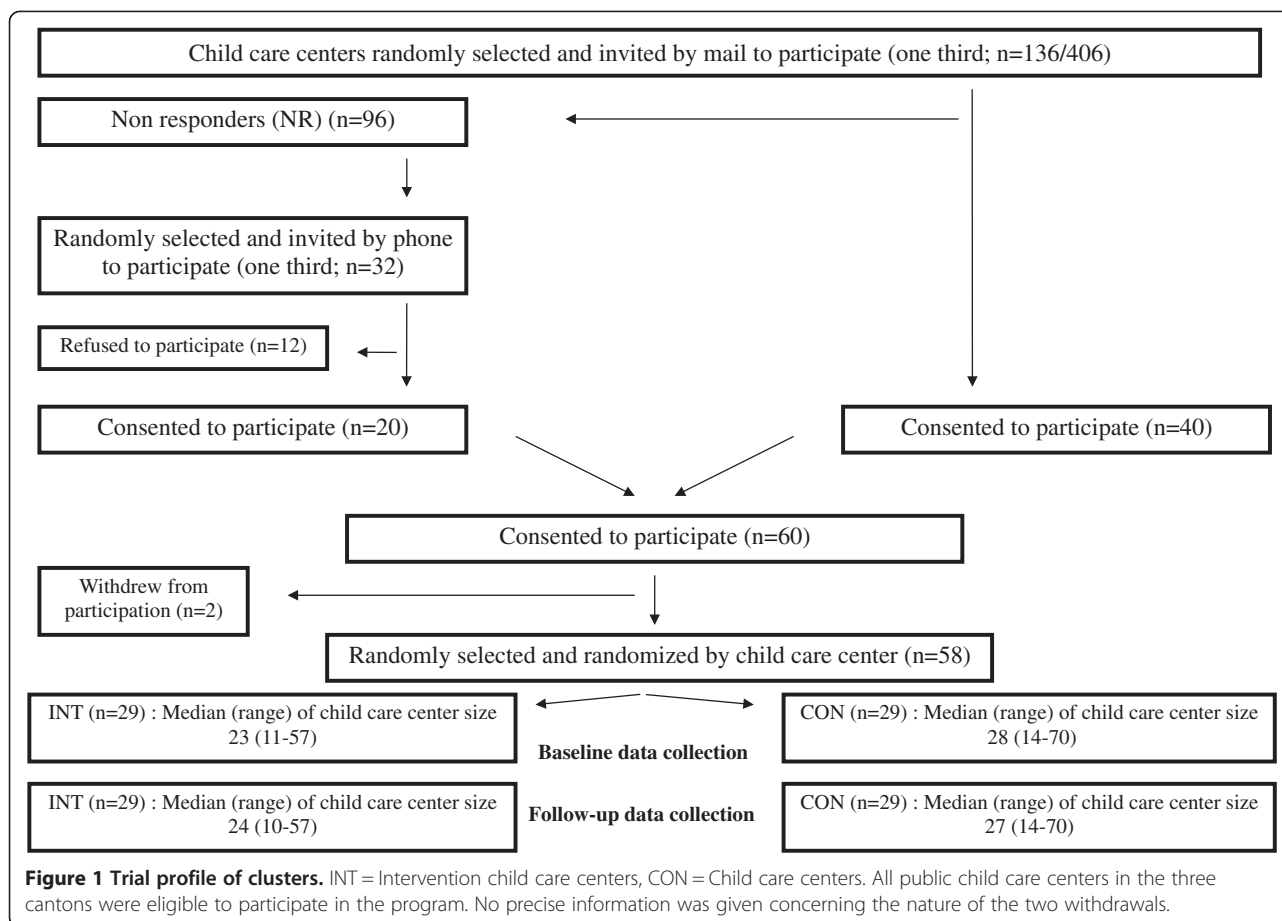
Study design, setting and participants

This cluster-RCT was performed in 3 out of 6 cantons in the French-speaking part of Switzerland (Vaud, Neuchâtel and Jura). A canton represents a geographic government area. Vaud has 725'000, Neuchâtel 174'000 and Jura 70'000 inhabitants with all three cantons having both rural and urban areas. The cantonal ethical committees approved the study and parents gave informed written consent. The RCT was registered as clinical trials.gov NCT00967460.

As the respective cantonal governmental institutions conducted the intervention, all public child care centers in these cantons were eligible. Recruitment, selection and a blinded randomization of the child care centers took place between October 2008 and February 2009 and were performed by a governmental coordinator not involved in the assessment of the program. For organizational purposes, the governmental agencies decided to select and randomize all the centers before the end of the school year in order to be able to start the intervention after the summer break. A third of the public child care centers ($n = 136/406$) in the three cantons were randomly selected and invited by mail to participate in the Youp'là Bouge physical activity program (Figure 1). Two child care centers withdrew at the beginning of the program without giving more information. Fifty-eight child care centers from rural and urban areas participated in the program. They were 1:1 assigned to a control ($n = 29$, corresponding to a waiting list for a future participation) and an intervention ($n = 29$) group. Educators, parents and children were informed that the intervention aimed to promote children's health, but were unaware of the main objectives of the study.

Intervention

The physical activity intervention lasted from September 2009 to June 2010 and was designed to intervene at the individual (children, educators, and parents) and envi-



ronmental (child care built environment; physical activity as part of the daily program) level, based on a socio-ecological conceptual model [45]. Behavioral strategies, targeting children, educators and families aimed to improve knowledge about physical activity benefits and to increase pleasure, self-efficacy and skills and to integrate physical activity into the daily life of the child care [46]. The physical activity intervention also integrated several components that have been previously shown to be effective [22] and that can be implemented on a large scale: 1) Training and support of the educators [42,47]; 2) Rearrangement of the child care built environment [48]; 3) Encouragement of parental involvement [49]; 4) Recommendation of daily physical activity [48]. However, in order to attract as many child care centers as possible and respect their specific needs for autonomy, no precise mandatory demands were made regarding the daily physical activity time or the use of a structured physical activity curriculum.

Training and support of the educators

Five workshops providing theoretical and practical physical activity support were held for the educators of the respective intervention child care centers between April

2009 and July 2009. At least one educator per child care had to be present, but child care centers were encouraged to train more than one educator. Workshops were given by the coordinator, by sport scientists specialized in physical activity and health and by physicians. Themes of the workshops were 1) "Movement and motor development": Educators were made aware about the importance of physical activity and of motor development for global childhood development. 2) "Moving - a pleasure and a need": Educators learned to better understand the main factors related to inactivity and how to promote physical activity in young children and families. Practical aspects were also given, especially about the use of the materials. 3) "Practical aspect of physical activity": The trainers highlighted the importance of letting the children move freely around and autonomously explore the environment. The aspect of security was also treated in this workshop. 4) "Health promotion in child care centers": Educators learned more about the health implications of physical activity/inactivity (such as obesity) and the importance of involving the parents in such a program. 5) "Implementation of the project": Educators were given tools showing how to implement the program in their specific context. The coordinator provided

the child care centers with flyers, documentation and personal support for the parental sessions.

During the intervention, the coordinator organized every 2 months regular group meetings in the different child cares with the trained educators of all child care centers of a canton. During the meetings, the child care presented what they had changed, exchanged ideas and discussed their barriers, problems and achievements. The coordinator was available for any questions and concerns that occurred between the meetings.

Child care environment

Each child care center received a budget of \$1500 for the rearrangement of their environment. The coordinator advised educators on how to make the child care environment more activity-friendly by specifically recommending providing an indoor movement space and provision of portable or/and fixed indoor or outdoor physical activity equipment.

Parental involvement

Child care centers were encouraged to involve parents in an information and discussion session presenting the program and the benefits of physical activity and to exchange views on how to integrate physical activity in their family environment. In addition, the parents of all intervention child care centers received flyers containing information regarding Youp'là Bouge.

Control group

The control group did not receive any intervention and continued their regular program. No financial incentives were provided for the participants of either group.

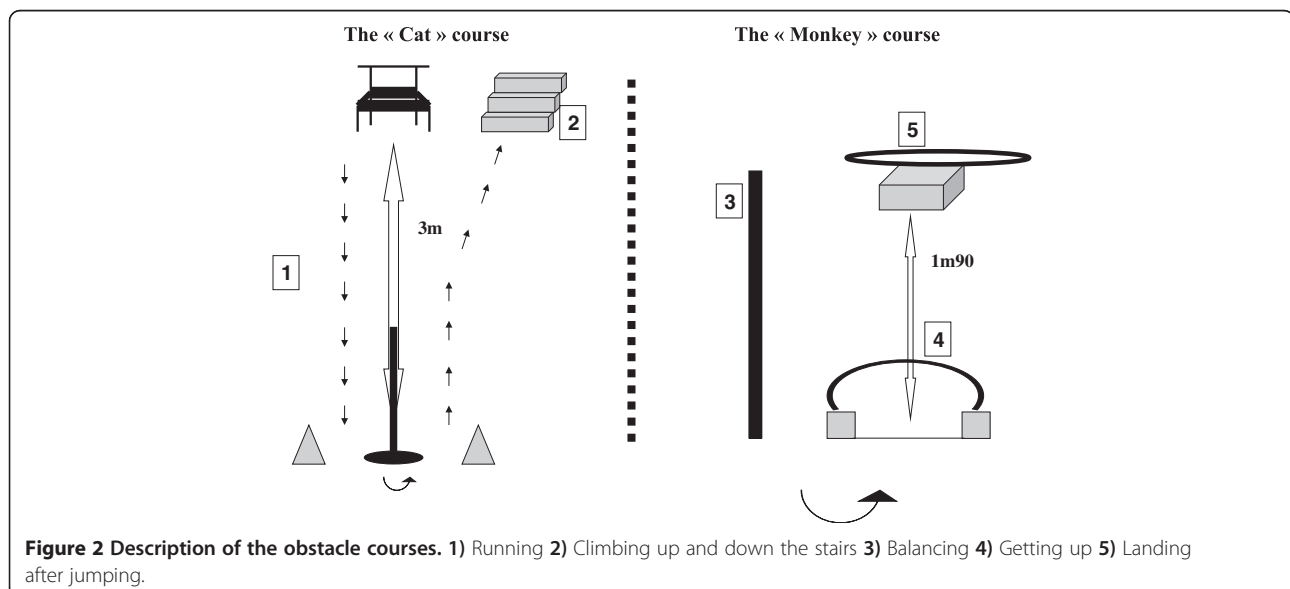
Data collection procedures and measures

We tested the efficacy of the program by comparing participants allocated to the intervention group with those in the control group at baseline and after 9 months. Trained researchers blinded to group allocation provided the assessments.

Primary outcomes

Motor skills were chosen as the primary outcome of this low-level intervention based on the results of a previous intervention in a similar setting [34]. Motor skill measures were adapted from the Zurich Neuromotor Assessment (ZNA) test, a standardized and reliable test for 5- to 8-year-old children [50,51]. Based on the developmental stages (initial, elementary and mature) according to Gallahue et al. [52], this test has been recently extended and subsequently validated for 3- to 5-year-old children [38,39,53]. Two of the three evaluators of the present study conducted a pilot study in two additional child care centers in order to compute the test-retest reliability ($n = 33$, Intra class correlation: $r = 0.5$, $p < 0.05$ for both evaluators over a two weeks period) and the inter-rater correlation ($n = 42$, Intra class correlation: $r = 0.8$, $p < 0.05$) of the "global motor score" (see below).

In this test, five motor skill tasks (climbing up and down the stairs; running; balancing; getting up; landing after jumping; no 1–5 in Figure 2) were tested using two playful obstacle courses (the "Cat" and the "Monkey"). Each task was rated on a 5-point scale scoring from 0 for worst to 4 for best. Motor skills' testing was carried out in a separate room in groups of 4 to 6 children in the presence of 1 educator and 3 evaluators. Each of both obstacle courses was explained and demonstrated to a subgroup of 2 to 3 children and each child was



evaluated and scored individually by one evaluator. This test allows assessing motor skills of 6 children with two evaluators within 15 minutes. A “global motor score” (ranging from 0–20) was calculated summing up the score of each motor skill task.

Children that refused to participate in even one of the five motor tasks were removed from all analyses to be able to use a “global motor score” ($n = 115$; 18% refusals). Refusals were especially numerous in younger children (mean age of refusals: 2.8 ± 0.6 yrs).

Secondary outcomes

Standing height was determined and body weight was measured using an electronic scale (Seca, Basel, Switzerland; accuracy 0.05 g). Children were classified into two BMI-groups (normal weight and overweight group (including both overweight and obese children)) according to the International Obesity Task Force criteria [54].

We also aimed to determine if the intervention demonstrated an effect on children physical activity levels during child care. Due to cost and limited human resources, 30 of the 58 child care centers were randomly selected after stratification for group assignment to also include physical activity measurements which were carried out one week after the other outcomes. Physical activity was measured over one day at the child care center with an accelerometer (GT1M, Actigraph, Florida, USA). The accelerometer was worn around the hip and programmed to save data in 15 s intervals (epoch size of 15 s), as proposed and validated for this age [55-57]. Data were considered valid if collected for at least 3 hours. This allowed the inclusion of children attending the child care center during half days. Mean total wearing time was 6.1 hours (standard deviation (SD) 1.4). Sequences of at least 10 min of consecutive zero values were removed and interpreted as accelerometer not worn [58]. Average physical activity level was expressed in counts per minute (cpm, total counts recorded divided by total daily wearing time). Physical activity was further categorized using age-specific cut-offs [57] into moderate-vigorous physical activity (MVPA; ≥ 420 counts/epoch) and vigorous physical activity (VPA; ≥ 842 counts/epoch). Thereby, data are expressed as the number of epochs/hour above the respective cut-offs.

Quality of life of the participating children was assessed using the parent report for children of PedsQL 4.0 Generic Core Scales questionnaire validated for this age group [59]. Information about parental socio-cultural cofounders (migrant status, education and workload) were obtained through a general health questionnaire [33,60-62] which was filled out at home. When necessary, the educators gave help to the parents to fill it out. Country of birth determined parental

migrant status. Being migrant was defined as born outside of Switzerland and educational level as the highest school grade completed (5 levels) [61,63].

Process evaluation and predictors

Process evaluation of the implementation in all 29 intervention child care centers was performed by the program coordinator for the following 6 predictors: 1) *Number of trained educators per child care center* (child care centers included between one to eight educators for this age group); 2) *educators' motivation*; 3) *management's involvement* (the latter two on a 3-point Likert scale: 1-Hardly motivated/involved 2-Moderately motivated/involved 3-Strongly motivated/involved); 4) *child care environment*: free access to a movement space (yes/no); 5) *type of equipment bought* (mobile only versus mobile and fixed for indoors and/or outdoors, respectively); 6) *parental involvement*: organization of a information and discussion session with parents (yes/no). These predictors were determined based on previous cross-sectional studies that notified their association with physical activity [40-44]. The coordinator also intended to evaluate the changes of time dedicated to daily physical activity, but educators were unable to provide exact information. The process evaluation was used to assess the impact of these parameters (predictors) on the chosen outcome changes.

Satisfaction

At the end of the intervention, parents and educators in the intervention group were asked to fill out a questionnaire determining their satisfaction with the program. The degree of satisfaction of the program was obtained from a 4 points Likert scale question: 1- highly satisfied 2- satisfied 3- more or less satisfied 4- unsatisfied. Parents also had the possibility to provide any critical comments about the program.

Statistical methods

All analyses were performed using Stata version 11.0 (Statacorp, College Station, TX, USA). For the power calculations we assumed an intraclass correlation of 0.10, i.e., corresponding to a random class effect whose standard deviation is 0.34 times the standard deviation of the primary outcome measure (motor skills) within classes. We also assumed that on average 10 children per child care center would be available for baseline and follow-up measurements (due to non-participation, attrition, moving, sickness or planned absence on the testing day) and that the intervention effect would be ≥ 0.4 standard deviations for the main primary outcome. Under these conditions, we calculated that 28 child care centers per group would provide 90% power with a p -value < 0.05 , if the true treatment effect equals at least

0.4 sigma. In total, 29 child care centers per group were included in order to account for possible attrition. Analyses were performed on an intention to treat basis; using individual children data but adjusting for clustering of outcomes within child care centers. Results are described as mean standard deviation (SD) or percentages, as data were normally distributed. Baseline characteristics between the intervention and control group were compared by mixed linear or regression models. Intervention effects were estimated using mixed linear regression models with the change in the respective outcome as the dependent variable, adjusting for baseline outcomes, age and sex as covariates. In case of binary outcome variables, logistic regression models were used with the follow-up outcome as the dependent variable adjusting for the same covariates including the respective baseline values. The effect estimates for quantitative outcomes are expressed as the difference between the mean individual changes in the intervention and the mean individual changes in the control groups. The effect estimates for binary outcomes were obtained from logistic regression models and are presented as odds ratios with 95% confidence intervals. All analyses were also adjusted for migrant status and educational level. No *p*-value adjustment for parallel comparisons was made for the secondary outcomes because the focus was on effect estimation and there is considerable correlation between the outcome and the predictor variables considered. In order to be able to further improve the program in the future, we performed exploratory analyses to test if the potential predictors mentioned in the process evaluation would be associated with improved longitudinal outcomes within the intervention group. Mixed linear models were used with motor skills, BMI, physical activity and quality of life as the respective dependent outcome variables and either one or all 6 predictors (see "process evaluation and predictors") as the respective predictor variables adjusting for the baseline outcomes, age and sex as covariates. We thereby compared those child care centers that implemented these items to those who did not. For all analyses, there was no imputation of missing data.

Results

Study sample

Participant flow is shown in Figures 1 and 3. A total of 58 child care centers ($n = 1616$ children) entered the program. Informed consent was obtained from 91% of the parents' children ($n = 1467$). Of those, a total of 737 children received the intervention. Due to a mean attendance of the children at child care center of 48%, the current sample focuses on the 648 children who were present on the test day (313 intervention and 335 controls). None of the child care centers left the program,

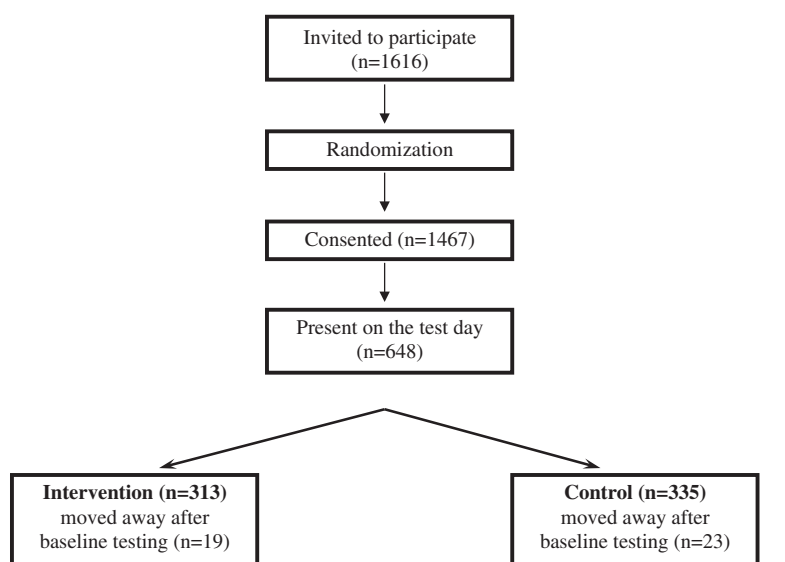
but 19 children (6%) in the intervention group and 23 (7%) in the control group had moved away by the end of the year. Child and parental baseline characteristics according to study group are shown in Table 1. Mean age of the children was 3.3 years (SD 0.6). No significant differences were observed in baseline characteristics and outcome variables between the control and the intervention groups (Table 1, all $p > 0.09$).

Outcomes

The results of the intervention on primary and secondary outcomes are summarized in Table 2. There was no intervention effect on the primary (motor skills) or the three secondary outcomes (BMI or the prevalence of overweight, measured physical activity and quality of life). Adjusting for parental migrant status or educational level did not alter the results (not shown).

Process evaluation, predictors and satisfaction

All intervention centers provided at least one, and five centers (17%) two or more educators for training. These educators attended all workshops. The educators were either strongly (50%) or moderately (50%) motivated. The management was either strongly (70%) or moderately (30%) involved. All intervention centers rearranged their indoor environment and purchased physical activity indoor equipment (69% of it mobile), while 28% also purchased outdoor equipment (only mobile); 69% of the centers provided free access to a movement space and 72% organized an information session with parents (i.e. parental involvement). Table 3 shows the predictors with significant impact on the assessed outcomes within the intervention group: Child motor skills were higher where centers offered a parental information session or free access to a movement space, while the motivation and training of additional educators was associated with higher effects on BMI. The purchase of only mobile as compared to mobile and fixed indoor equipment and providing a free access to a movement space was associated with higher average physical activity and more intense physical activities (VPA and MVPA, respectively). No impact on the chosen outcomes was found for the other potential predictors (all $p > 0.05$, data not shown). When including all six predictors in addition to sex, age and the respective outcome variables in multivariate analyses, the above mentioned results (Table 3) remained unchanged except for two predictors: The association of a parental information session with increased motor skills ($p = 0.1$) and the presence of mobile indoor equipment (as compared to mobile and fixed indoor equipment) with greater average physical activity ($p = 0.08$) did not remain significant. However, mobile equipment continued to be significantly associated with



Primary outcomes						
Baseline	Follow-up	Both		Baseline	Follow-up	Both
261	264	187	Motor skills ^a	272	290	201
Secondary outcomes						
283	269	204	BMI ^a	308	298	225
211	197	134	Quality of life ^b	185	173	118
189	188	133	Physical Activity ^c	182	196	140

Figure 3 Trial profile of participants. ¹Due to a mean attendance of the children at child care of 48%, 648 children were present on the test day at baseline, 589 with valid BMI and 533 with valid motor skill (global motor score) measures. ²Valid data for total quality of life as assessed by PedsQL questionnaire. ³Due to cost and logistic reasons, 30 of the 58 child care centers were randomly selected to also include physical activity measurements which were performed one week after the other outcomes.

Table 1 Child and parental baseline characteristics according to study group

Characteristic	Control	Intervention	Total sample
n	335	313	648
Gender, male, % (n)	49 (164)	51 (171)	51 (335)
Age, mean ± SD, y (n)	3.3 ± 0.6 (335)	3.4 ± 0.6 (313)	3.3 ± 0.6 (648)
Weight, mean ± SD, kg (n)	15.6 ± 2.2 (314)	15.8 ± 2.3 (283)	15.7 ± 2.2 (597)
Height, mean ± SD, cm (n)	97.9 ± 6.5 (308)	98.1 ± 6.4 (283)	98.0 ± 6.4 (591)
BMI, mean ± SD, kg/m ² (n)	16.2 ± 1.2 (308)	16.3 ± 1.4 (283)	16.3 ± 1.3 (591)
Overweight children, % (n) ^a	11 (34)	15.7 (44)	13.2 (78)
Parental migrant status, % (n) ^b	61.3 (146)	54.7 (145)	57.9 (291)
Parental low educational level, % (n) ^c	15.8 (35)	19 (49)	17.5 (84)

^a according to the International Obesity Task Force criteria.

^b migrant status was defined as at least one parent born outside of Switzerland.

^c parental low educational level was defined as at least one parent with 9 years or less of education.

No significant differences were observed in baseline characteristics and outcome variables between the control and the intervention groups (all p > 0.09).

Table 2 Baseline and follow-up values of primary and secondary outcomes and intervention effects

Outcomes	Baseline		Follow-up		Effect estimates	
	Intervention	Control	Intervention	Control	Δ of mean change (95% CI) ^a	p value
	n = 313	n = 335	n = 280	n = 308		
<i>Primary outcome</i>						
Motor skills (Global motor score), mean \pm SD	12.4 \pm 3.5	12.5 \pm 3.5	14.2 \pm 2.9	14.2 \pm 2.8	-0.2 (-0.8 to 0.3)	0.43
<i>Secondary outcomes</i>						
Average PA, mean \pm SD, counts/min	620 \pm 278	600 \pm 206	765 \pm 340	711 \pm 219	55.9 (-30.6 to 142.3)	0.21
MVPA, mean \pm SD, epochs/hour \geq 420 counts	29.2 \pm 14	28.1 \pm 12.5	37.2 \pm 17.1	35.9 \pm 13.7	1.1 (-4.2 to 6.4)	0.68
VPA mean \pm SD, epochs/hour \geq 842 counts	8.1 \pm 6.1	7.4 \pm 5.3	10.3 \pm 7.5	9.2 \pm 6.2	1.22 (-1.25 to 3.69)	0.33
Quality of life (PedsQL™ Score), mean \pm SD	83.0 \pm 9.1	82.0 \pm 11.0	82.9 \pm 9.3	81.5 \pm 11.3	1.1 (-1.8 to 3.9)	0.46
BMI, mean \pm SD, kg/m ²	16.3 \pm 1.4	16.2 \pm 1.2	16.1 \pm 1.3	16.2 \pm 1.3	-0.7 (-0.2 to 0.6)	0.29
<i>Odds Ratio (95% CI)^b</i>						
Normal Weight, %	84.3	89.0	82.5	85.9	0.74 (0.48 to 2.76)	0.2
Overweight, %	15.7	11	17.5	14.1		

BMI body mass index, PA physical activity, MVPA moderate to vigorous physical activity, VPA vigorous physical activity, CI confidence intervals.

^aIn the case of quantitative outcome variables, the effect estimates describe the difference between the mean individual changes in the intervention group and the mean individual changes in the control group using mixed linear models and adjusting for the respective baseline values, age, gender and for the cluster factor child care center (i.e. the unit of randomization).

^bIn the case of the binary outcome variables, effect estimates were obtained from mixed logistic regression models with the same adjustments, and they are expressed as odds ratios.

n is based on the number of children present at the test day. See Figure 3 for more details on the number of valid outcome data at a given time point.

VPA and newly also on MVPA, when all predictors were taken simultaneously into account.

All educators of the intervention child care centers were either highly satisfied (43%) or satisfied (57%). All parents were highly satisfied with the different parts of the program, but 10% would have wished a faster and more extensive return of the results and 3% a higher parental involvement.

Discussion

The Youp'là Bouge program, a governmentally-led “real-life” physical activity program in child care centers, did

not lead to improvements in child motor skills. The intervention also resulted in smaller effect sizes for BMI, child care-based physical activity and quality of life than were hypothesized. This program was intended to represent a low-level feasible physical activity intervention integrating several components that have been shown to be effective in previous lifestyle interventions [22] namely a daily physical activity period in the child care center, training and support of the educators, rearrangement of the child care built environment and encouragement of parental involvement. The design aimed to identify potentially relevant and modifiable predictors of

Table 3 Significant predictors of the primary and the secondary outcomes

Predictors ^a	% of child care centers ^b	Outcomes	Effect estimates of the predictors	
			Δ of mean change (95% CI) ^c	p value
Information session with parents	72%	Motor skills (Global motor score)	1.15 (0.16 to 2.13)	p = 0.02
Free access to a movement space	48%	Motor skills (Global motor score)	0.92 (0.12 to 1.70)	p = 0.02
High motivation of the educators	59%	BMI (kg/m ²)	-0.16 (-0.30 to -0.01)	p = 0.04
Training of additional educators	17%	BMI (kg/m ²)	-0.26 (-0.50 to -0.01)	p = 0.04
Free access to a movement space	48%	Average PA (counts/min)	144 (41 to 248)	p = 0.006
Free access to a movement space	48%	MVPA (epochs/hours \geq 420 counts)	9.4 (2.9 to 15.9)	p = 0.005
Purchase of mobile indoor equipment	69%	Average PA (counts/min)	170 (12 to 328)	p = 0.03
Purchase of mobile indoor equipment	69%	VPA (epochs/hours \geq 842 counts)	4.0 (0.1 to 7.9)	p = 0.04

BMI Body Mass Index, PA physical activity, VPA vigorous physical activity, CI confidence intervals.

^a Feedback was obtained by the program coordinator from all 29 intervention child care centers at the end of the intervention. Only the significant predictors are shown in this table (5 out of 6).

^b Percentage of child care centers that provided the respective predictors.

^c The effect estimates describe the difference between the mean individual changes in the intervention child care centers fulfilling the respective criterion and the mean individual changes of the remaining intervention child care centers using mixed linear models and adjusting for the respective baseline values, age, gender and for the cluster factor child care center (i.e. the unit of randomization).

improved outcomes. We thereby provide results of a program that was studied as a RCT, yet not conducted by a study group, but initiated and led by the local governmental education and health institutions.

Comparison with other studies

Previous published preschool-based randomized controlled trials had studied the impact of physical activity interventions on motor skills in typically developing healthy preschoolers and all of them were investigator-driven studies (as opposed to governmentally-led “real-life studies”) [24,29,32,35]. Mean age of the children was well over 4 years (ranging from 4.4 to 6.1 years) compared to 3.3 years in our program. All offered a relatively intense program that included structured physical activity ranging from twice to 4 times a week and lasting 6–10 months. All except for one study lead to an improvement of motor skills, as measured by fundamental motor skills testing (jumping, balance, skipping, and ball exercises) or agility. The study [24] that did not improve motor skills offered 30 min/day of vigorous physical activity games and measured side-to-side jumps from the Karlsruhe Motor Screening 3–6 [64] as their measure of motor skills. To our knowledge, only 2 randomized controlled trials were child care-based and evaluated motor skills, both of them being investigator-driven [30,34]. The mean age of the children was over 4 years and thus higher than the mean age in our program. Both studies included structured sessions of physical activity three to four times/week ranging from 30–45 minutes over around 6 months and one study focused in each lesson on fundamental motor skills [30]. In contrast to our results, children in these two studies improved their motor skills. The first study [30] assessed fundamental motor skills using the Test of Gross Motor Development second edition (TGMD-2) [65] while the second one [34] used the Movement Assessment Battery [6]. Altogether, the design of the implementation (study setting vs governmentally-led program, structured vs unstructured physical activity, differences in age) and the methodology used to assess motor skills are quite different between the other trials and our program.

Predictors of improved outcome

This governmentally-led program was designed to attract as many child care centers as possible and to respect their autonomy, daily functioning and existing time and space limitations. Therefore, the only compulsory components of the program were training of the educators and rearrangement of the built environment, but no precise mandatory demands were made regarding the other components. No information about exact daily physical activity time or the use of any specific curriculum for structured physical activity, the number of

trained educators, the provision of a free access to a movement space or a specific type of physical activity equipment, or the organization of a parental information session was obtained. As not all components were implemented by all child care centers, the design allowed us to identify the role of different relevant predictors in one single study.

Thus, different components can be identified as predictors for improved outcomes in previous studies and particularly in the present intervention: 1) The few existing RCT interventions in preschool that had increased effects on motor skill development [29,30,34,35,61], physical activity [2,26–28,33,37], or obesity [26,27,31,33] used a *specific curriculum* to implement structured physical activity (see also above). In accordance with this, as confirmed by a previous study [23], focusing exclusively on free play did not increase objectively measured physical activity. In our program, a specific curriculum might have allowed the achievement of a homogeneous amount of physical activity in the whole intervention group, but this is difficult to implement in daily practice and should not be done at the expense of free playtime [66]. An option might be to formally integrate a specific amount of structured physical activity into the daily routines [37,43,67]. 2) *Educators' motivation* was judged by the coordinator based on the involvement during and outside of the workshops and meetings and during the on-site visits. As motivation is difficult to measure, its assumed impact on behavioral change or, in our case, on BMI, has been rarely assessed. Similarly, Brown et al. [40] found that child care educator enthusiasm and efforts are directly related to children's physical activity. In addition, the training of an *additional educator* may have contributed to increase the educator's motivation in the current study, as the program was led by two persons. In concordance with previous studies, these findings underline the importance of the educators' qualification and training [42]. 3) We found that the presence of a *free access to a movement space* and of *mobile physical activity equipment* were related to better motor skills and/or higher physical activity. The presence of a free access movement space favors child-initiated activities and might be in accordance with the findings of Brown et al. [41] who demonstrated that child-initiated activities were associated with higher physical activity levels than educators-initiated ones. Moreover, having free access to a movement space had also an increased effect on motor skills, which confirms the existing relationship between motor skills and physical activity [6,7,25,68–70]. Similarly to our results, the presence of mobile equipment has been shown to increase physical activity in previous studies [16,41]. As suggested by Kreichauff et al. [43], mobile equipment seems to stimulate more physical activity, as it can be used in many different ways, and typically involves games of higher intensity. 4) The importance of

parental involvement to change children's lifestyle has been reported in previous successful interventions [44,71-74] but, as far as we are aware, not analyzed as a predictor within a study. In our trial, offering parental sessions was related to an increased effect on motor skills within the intervention group.

Limitations and strengths

The present study has a number of limitations. To study such a "real-life" program including both precise mandatory components as well as recommendations, evidently leads to a substantial heterogeneity. Moreover, the intervention probably provided an inadequate dose and "type" of physical activity (absence of structured physical activity) to have any beneficial impact on the measured outcomes. To be more relevant in our analyses it would have been interesting to collect precise information about daily physical activity time or structured physical activity implementation. The child care-based investigation of physical activity performed during one single day (mean wearing time of 6 hours) and only during child care attendance, represents another limitation. Considering the literature, a minimum of three days would have been more valuable for this assessment [75]. However, Trost et al. [75] suggest that the variability of this assessment observed over a single day seems to decrease as children get younger. Physical activity measurements restricted to the child care center setting can also offer the advantage to demonstrate potential differences within a defined setting. The motor skill assessment has been previously validated [53]. In our own pilot study ($n = 33$ children), test-retest correlations were only moderate compared to other motor tests [65,70,76]. The very young age of our sample might explain these relatively low test-retest correlations. The variability at this age in motor performance might be due to the fact that the children are in a period of unsteady motor acquisition. A bigger sample in our pilot study might have strengthened our results. On the other side, this test has the advantage to assess motor skill performance in a relatively short time. Strengths of the study are its design, the investigation of a "real-life" program and its potentially beneficial predictors, the assessment of motor skills and of child care-based objectively measured physical activity and the young age of the children.

Generalizability

Based on the fact the Youp'là Bouge program was a governmental "real-life" program, was offered to all child care centers without any exclusion criteria and was implemented in both rural and urban regular child care centers, our results should be generalizable. From a practical point of view, the Youp'là Bouge program was feasible and well-received. Child care centers and parents

were highly satisfied with the program which allowed its further widespread implementation over the following years outside of a study setting. The assessment also allowed us to identify the predictors that improve the effectiveness of the implementation. Based on the current findings, the program adapted its content and created a label that requires Youp'là Bouge child care centers to comply with the following requirements: 1) 90 minutes/day of physical activity (10 minutes of which structured physical activity); 2) at least one trained educator per child care center; 3) a written physical activity policy to integrate the different intervention components; 4) wherever possible, a free access to an indoor movement space and the purchase of specifically mobile equipment; 5) at least one parental information session/year. The impact of this new and adapted program should be studied in a future trial including new predictors in order to constantly improve existing programs.

Conclusion

In summary, our results indicate that the "real-life" Youp'là Bouge physical activity program in child care centers did not lead to increased effects in motor skills, BMI, child care-based physical activity or quality of life and confirms the complexity of implementing physical activity intervention outside of a study setting [77]. The novel approach identified potentially relevant predictors within a governmentally-led RCT which helped to adapt the program and the allocation of its resources. The impact of this adapted program should be studied in a future trial including new predictors in order to constantly improve existing programs.

Abbreviations

BMI: Body mass index; MVPA: Moderate to vigorous physical activity; VPA: Vigorous physical activity; RCT: Randomized control trial.

Competing interests

Financial disclosures: The authors have no financial relationships relevant to this article to disclose. Conflict of interest: The authors declare that they have no conflicts of interest relevant to this article to disclose.

Authors' contribution

AB contributed to the design of the study, acquired, analyzed and interpreted the data, and drafted, wrote, revised the manuscript. He approved the final manuscript as submitted. JB contributed to the conception of the design instruments, assisted in data acquisition, and in drafting the manuscript. He approved the final manuscript as submitted. THK contributed to the conception of the design instruments, and assisted in drafting the manuscript. She approved the final manuscript as submitted. SK assisted in the conception and design of the study, and in drafting the manuscript. She approved the final manuscript as submitted. AL contributed to the conception and design of the study, and assisted in drafting the manuscript. She approved the final manuscript as submitted. CS assisted in data analysis, and critically reviewed the manuscript. He approved the final manuscript as submitted. PMV assisted in data analysis and interpretation, and critically reviewed the manuscript. He approved the final manuscript as submitted. JJP conceived and designed the study, analyzed and interpreted the data, and drafted and revised the manuscript. She approved the final manuscript as submitted. All authors read and approved the final manuscript.

Author details

¹Institute of Sport Sciences, University of Lausanne, Quartier Unil - Mouline, Bâtiment Geopolis, Lausanne 1015, Switzerland. ²Child Development Center, University Children's Hospital, Zürich 8032, Switzerland. ³Swiss Tropical and Public Health Institute, University of Basel, Socinstrasse 57, Basel 4002, Switzerland. ⁴Health League, Rue de la Mouline 8, Chavannes-près-Renens 1022, Switzerland. ⁵Institute of Social and Preventive Medicine, University of Basel, Basel, Switzerland. ⁶Service of Endocrinology, Diabetes and Metabolism, Centre Hospitalier Universitaire Vaudois, University of Lausanne, Rue du Bugnon 46, Lausanne 1011, Switzerland.

Received: 24 July 2012 Accepted: 2 July 2013

Published: 8 July 2013

References

- Hartmann T, Zahner L, Puhse U, Puder JJ, Kriemler S: **Effects of a school-based physical activity program on physical and psychosocial quality of life in elementary school children: a cluster-randomized trial.** *Pediatr Exerc Sci* 2010, **22**:511–522.
- Specker B, Binkley T, Fahrwald N: **Increased periosteal circumference remains present 12 months after an exercise intervention in preschool children.** *Bone* 2004, **35**:1383–1388.
- Stodden D, Goodway JD, Langendorfer S, Robertson MA, Rudisill MA, Garcia LE: **A developmental perspective on the role of motor skill competence in physical activity: an emergent relationship.** *Quest* 2008, **60**:290–306.
- Bös K: **Motorische leistungsfähigkeit von kindern und junglichen (physical fitness in children and adolescents).** *Erster Deutscher Kinder- und Jugendsportbericht* 2003, **2003**:1550–1573.
- Jenni OG, Aziz C, Cafilisch J, Rousson V: **Motor and intellectual functions in normally developing children between 7 and 18 years: are they fundamentally related?** *Developmental Neuropsychology* 2012. in press.
- Fisher A, Reilly JJ, Kelly LA, Montgomery C, Williamson A, Paton JY, Grant S: **Fundamental movement skills and habitual physical activity in young children.** *Med Sci Sports Exerc* 2005, **37**:684–688.
- Wrotniak BH, Epstein LH, Dorn JM, Jones KE, Kondilis VA: **The relationship between motor proficiency and physical activity in children.** *Pediatrics* 2006, **118**:e1758–1765.
- Piek JP, Bradbury GS, Elsley SC, Tate L: **Motor coordination and social-emotional behaviour in preschool-aged children.** *Int J Disabil Dev Educ* 2008, **55**:143–151.
- Blank R: **European academy of childhood disability (EACD): recommendations on the definition, diagnosis and intervention of developmental coordination disorder (pocket version).** german-swiss interdisciplinary clinical practice guideline S3-standard according to the association of the scientific medical societies in germany. Pocket version. Definition, diagnosis, assessment, and intervention of developmental coordination disorder (DCD). *Dev Med Child Neurol* 2012, **54**:e1–7.
- Ahn S, Fedewa AL: **A meta-analysis of the relationship between children's physical activity and mental health.** *J Pediatr Psychol* 2011, **36**:385–397.
- Hartmann T, Zahner L, Puhse U, Schneider S, Puder JJ, Kriemler S: **Physical activity, bodyweight, health and fear of negative evaluation in primary school children.** *Scand J Med Sci Sports* 2010, **20**:e27–34.
- Hesketh KD, Campbell KJ: **Interventions to prevent obesity in 0–5 year olds: an updated systematic review of the literature.** *Obesity (Silver Spring)* 2010, **18**(Suppl 1):S27–35.
- Monasta L, Batty GD, Cattaneo A, Lutje V, Ronfani L, Van Lenthe FJ, Brug J: **Early-life determinants of overweight and obesity: a review of systematic reviews.** *Obes Rev* 2010, **11**:695–708.
- Monasta L, Batty GD, Macaluso A, Ronfani L, Lutje V, Bavar C, van Lenthe FJ, Brug J, Cattaneo A: **Interventions for the prevention of overweight and obesity in preschool children: a systematic review of randomized controlled trials.** *Obes Rev* 2011, **12**:e107–118.
- Moore LL, Gao D, Bradlee ML, Cupples LA, Sundarajan-Ramamurti A, Proctor MH, Hood MY, Singer MR, Ellison RC: **Does early physical activity predict body fat change throughout childhood?** *Prev Med* 2003, **37**:10–17.
- Bower JK, Hales DP, Tate DF, Rubin DA, Benjamin SE, Ward DS: **The childcare environment and children's physical activity.** *Am J Prev Med* 2008, **34**:23–29.
- McWilliams C, Ball SC, Benjamin SE, Hales D, Vaughn A, Ward DS: **Best-practice guidelines for physical activity at child care.** *Pediatrics* 2009, **124**:1650–1659.
- Story M, Kaphingst KM, French S: **The role of child care settings in obesity prevention.** *Future Child* 2006, **16**:143–168.
- Trost SG, Ward DS, Senso M: **Effects of child care policy and environment on physical activity.** *Med Sci Sports Exerc* 2010, **42**:520–525.
- Ward DS: **Physical activity in young children: the role of child care.** *Med Sci Sports Exerc* 2010, **42**:499–501.
- Finch M, Wolfenden L, Morgan PJ, Freund M, Wyse R, Wiggers J: **A cluster randomised trial to evaluate a physical activity intervention among 3–5 year old children attending long day care services: study protocol.** *BMC Publ Health* 2010, **10**:534.
- Waters E, de Silva-Sanigorski A, Hall BJ, Brown T, Campbell KJ, Gao Y, Armstrong R, Prosser L, Summerbell CD: **Interventions for preventing obesity in children.** *Cochrane Database Syst Rev* 2011, **CD001871**(12).
- Alhassan S, Sirard JR, Robinson TN: **The effects of increasing outdoor play time on physical activity in Latino preschool children.** *Int J Pediatr Obes* 2007, **2**:153–158.
- Bayer O, von Kries R, Strauss A, Mitschek C, Toschke AM, Hose A, Koletzko BV: **Short- and mid-term effects of a setting based prevention program to reduce obesity risk factors in children: a cluster-randomized trial.** *Clin Nutr* 2009, **28**:122–128.
- Burgi F, Meyer U, Granacher U, Schindler C, Marques-Vidal P, Kriemler S, Puder JJ: **Relationship of physical activity with motor skills, aerobic fitness and body fat in preschool children: a cross-sectional and longitudinal study (Ballabeina).** *Int J Obes (Lond)* 2011, **35**:937–944.
- Eliakim A, Nemet D, Balakirski Y, Epstein Y: **The effects of nutritional-physical activity school-based intervention on fatness and fitness in preschool children.** *J Pediatr Endocrinol Metab* 2007, **20**:711–718.
- Fitzgibbon ML, Stolley MR, Schiffer L, Van Horn L, KauferChristoffel K, Dyer A: **Two-year follow-up results for Hip-Hop to health Jr.: a randomized controlled trial for overweight prevention in preschool minority children.** *J Pediatr* 2005, **146**:618–625.
- Fitzgibbon ML, Stolley MR, Schiffer L, Van Horn L, KauferChristoffel K, Dyer A: **Hip-Hop to health Jr. For latino preschool children.** *Obesity (Silver Spring)* 2006, **14**:1616–1625.
- Hardy LL, King L, Kelly B, Farrell L, Howlett S: **Munch and move: evaluation of a preschool healthy eating and movement skill program.** *Int J Behav Nutr Phys Act* 2010, **7**:80.
- Jones RA, Riethmuller A, Hesketh K, Trezise J, Batterham M, Okely AD: **Promoting fundamental movement skill development and physical activity in early childhood settings: a cluster randomized controlled trial.** *Pediatr Exerc Sci* 2011, **23**:600–615.
- Mo-suwan L, Pongprapai S, Junjana C, Puetpaiboon A: **Effects of a controlled trial of a school-based exercise program on the obesity indexes of preschool children.** *Am J Clin Nutr* 1998, **68**:1006–1011.
- Niederer I, Kriemler S, Gut J, Hartmann T, Schindler C, Barral J, Puder JJ: **Relationship of aerobic fitness and motor skills with memory and attention in preschoolers (Ballabeina): a cross-sectional and longitudinal study.** *BMC Pediatr* 2011, **11**:34.
- Puder JJ, Marques-Vidal P, Schindler C, Zahner L, Niederer I, Burgi F, Ebenegger V, Nydegger A, Kriemler S: **Effect of multidimensional lifestyle intervention on fitness and adiposity in predominantly migrant preschool children (Ballabeina): cluster randomised controlled trial.** *BMJ* 2011, **343**:d6195.
- Reilly JJ, Kelly LA, Montgomery C, Williamson A, Fisher A, McColl JH, Lo Conte R, Paton JY, Grant S: **Physical activity to prevent obesity in young children: cluster randomised controlled trial.** *BMJ* 2006, **333**:1041.
- Zask A, Adams JK, Brooks LO, Hughes DF: **Tooty fruity veggie: an obesity prevention intervention evaluation in Australian preschools.** *Health Promot J Austr* 2012, **23**:10–15.
- de Silva-Sanigorski AM, Bell AC, Kremer P, Nichols M, Crellin M, Smith M, Sharp S, de Groot F, Carpenter L, Boak R, et al: **Reducing obesity in early childhood: results from romp & chomp, an Australian community-wide intervention program.** *Am J Clin Nutr* 2010, **91**:831–840.
- Trost SG, Fees B, Dziewaltowski D: **Feasibility and efficacy of a "move and learn" physical activity curriculum in preschool children.** *J Phys Act Health* 2008, **5**:88–103.
- Kakebeeke TH, Cafilisch J, Chaouch A, Rousson V, Largo RH, Jenni OG: **Neuromotor development in children. Part 3: motor performance in 3- to 5-year-olds.** *Dev Med Child Neurol* 2012, **55**(3):248–256.
- Kakebeeke TH, Locatelli I, Rousson V, Cafilisch J, Jenni OG: **Improvement in gross motor performance between 3 and 5 years of age.** *Percept Mot Skills* 2012, **114**:795–806.

40. Brown WH, Googe HS, McIver KL, Rathel JM: **Effects of teacher-encouraged physical activity on preschool playgrounds.** *J Early Intervent* 2009, **31**:126–145.
41. Brown WH, Pfeiffer KA, McIver KL, Dowda M, Addy CL, Pate RR: **Social and environmental factors associated with preschoolers' non-sedentary physical activity.** *Child Dev* 2009, **80**:45–58.
42. Dowda M, Pate RR, Trost SG, Almeida MJ, Sirard JR: **Influences of preschool policies and practices on children's physical activity.** *J Community Health* 2004, **29**:183–196.
43. Kreichauf S, Wildgruber A, Krombholz H, Gibson EL, Voegelé C, Nixon C, Douthwaite W, Moore H, Manios Y, Summerbell CD: **Critical narrative review to identify educational strategies promoting physical activity in preschool.** *Obes Rev* 2012, **13**(Suppl 1):96–105.
44. Loprinzi PD, Trost SG: **Parental influences on physical activity behavior in preschool children.** *Prev Med* 2010, **50**:129–133.
45. Egger G, Swinburn B: **An "ecological" approach to the obesity pandemic.** *BMJ* 1997, **315**:477–480.
46. Nixon CA, Moore HJ, Douthwaite W, Gibson EL, Voegelé C, Kreichauf S, Wildgruber A, Manios Y, Summerbell CD: **Identifying effective behavioural models and behaviour change strategies underpinning preschool- and school-based obesity prevention interventions aimed at 4–6-year-olds: a systematic review.** *Obes Rev* 2012, **13**(Suppl 1):106–117.
47. Dowda M, Brown WH, McIver KL, Pfeiffer KA, O'Neill JR, Addy CL, Pate RR: **Policies and characteristics of the preschool environment and physical activity of young children.** *Pediatrics* 2009, **123**:e261–266.
48. Hannon JC, Brown BB: **Increasing preschoolers' physical activity intensities: an activity-friendly preschool playground intervention.** *Prev Med* 2008, **46**:532–536.
49. Ferreira I, van der Horst K, Wendel-Vos W, Kremers S, van Lenthe FJ, Brug J: **Environmental correlates of physical activity in youth - a review and update.** *Obes Rev* 2007, **8**:129–154.
50. Largo RH, Caffisch JA, Hug F, Muggli K, Molnar AA, Molinari L: **Neuromotor development from 5 to 18 years. Part 2: associated movements.** *Dev Med Child Neurol* 2001, **43**:444–453.
51. Rousson V, Gasser T, Caffisch J, Largo R: **Reliability of the Zurich neuromotor assessment.** *Clin Neuropsychol* 2008, **22**:60–72.
52. Gallahue D, Ozmun J (Eds): *Understanding Motor Development Infants, Children, Adolescents, Adults.* Indianapolis: The McGraw-Hill Companies edition; 2006.
53. Kakebeke TH, Jenni OG: **Neuromotor development from three to five years.** In *Book Neuromotor development from three to five years*, Volume 4. Fens abstract: City; 2008:211–212. 211.212.
54. Cole TJ, Bellizzi MC, Flegal KM, Dietz WH: **Establishing a standard definition for child overweight and obesity worldwide: international survey.** *BMJ* 2000, **320**:1240–1243.
55. Bailey RC, Olson J, Pepper SL, Porszasz J, Barstow TJ, Cooper DM: **The level and tempo of children's physical activities: an observational study.** *Med Sci Sports Exerc* 1995, **27**:1033–1041.
56. de Vries SI, Bakker I, Hopman-Rock M, Hirasings RA, van Mechelen W: **Clinimetric review of motion sensors in children and adolescents.** *J Clin Epidemiol* 2006, **59**:670–680.
57. Pate RR, Almeida MJ, McIver KL, Pfeiffer KA, Dowda M: **Validation and calibration of an accelerometer in preschool children.** *Obesity (Silver Spring)* 2006, **14**:2000–2006.
58. Baquet G, Stratton G, Van Praagh E, Berthoin S: **Improving physical activity assessment in prepubertal children with high-frequency accelerometry monitoring: a methodological issue.** *Prev Med* 2007, **44**:143–147.
59. Varni JW, Limbers CA, Burwinkle TM: **Parent proxy-report of their children's health-related quality of life: an analysis of 13,878 parents' reliability and validity across age subgroups using the PedsQL 4.0 Generic Core Scales.** *Health Qual Life Outcomes* 2007, **5**:2.
60. Kriemler S, Zahner L, Schindler C, Meyer U, Hartmann T, Hebestreit H, Brunner-La Rocca HP, van Mechelen W, Puder JJ: **Effect of school based physical activity programme (KISS) on fitness and adiposity in primary schoolchildren: cluster randomised controlled trial.** *BMJ* 2010, **340**:c785.
61. Niederer I, Kriemler S, Zahner L, Burgi F, Ebenegger V, Hartmann T, Meyer U, Schindler C, Nydegger A, Marques-Vidal P, Puder JJ: **Influence of a lifestyle intervention in preschool children on physiological and psychological parameters (Ballabeina): study design of a cluster randomized controlled trial.** *BMC Publ Health* 2009, **9**:94.
62. Zahner L, Puder JJ, Roth R, Schmid M, Guldimann R, Puhse U, Knopfli M, Braun-Fahrlander C, Marti B, Kriemler S: **A school-based physical activity program to improve health and fitness in children aged 6–13 years ("Kinder-Sportstudie KISS"): study design of a randomized controlled trial [ISRCTN15360785].** *BMC Publ Health* 2006, **6**:147.
63. Urquia ML, Gagnon AJ: **Glossary: migration and health.** *J Epidemiol Community Health* 2011, **65**:467–472.
64. Bös K, Bappert S, Tittlbach S, Woll A: **Karlsruher-motorik-screening für kindergartenkinder (KMS 3–6).** *Sportunterricht* 2004, **53**:79–87.
65. Ulrich: *Test of Gross Motor Development-2.* TX: PRO-ED: Austin; 2000.
66. Burdette HL, Whitaker RC: **Resurrecting free play in young children: looking beyond fitness and fatness to attention, affiliation, and affect.** *Arch Pediatr Adolesc Med* 2005, **159**:46–50.
67. Krombholz H (Ed): *Bewegungsförderung im Kindergarten. Ein Modellversuch.* Schorndorf: Hofmann; 2005.
68. Barnett LM, van Beurden E, Morgan PJ, Brooks LO, Beard JR: **Childhood motor skill proficiency as a predictor of adolescent physical activity.** *J Adolesc Health* 2009, **44**:252–259.
69. Stodden D, Langendorfer S, Robertson MA: **The association between motor skill competence and physical fitness in young adults.** *Res Q Exerc Sport* 2009, **80**:223–229.
70. Williams HG, Pfeiffer KA, O'Neill JR, Dowda M, McIver KL, Brown WH, Pate RR: **Motor skill performance and physical activity in preschool children.** *Obesity (Silver Spring)* 2008, **16**:1421–1426.
71. Golan M: **Parents as agents of change in childhood obesity—from research to practice.** *Int J Pediatr Obes* 2006, **1**:66–76.
72. Kipping RR, Jago R, Lawlor DA: **Developing parent involvement in a school-based child obesity prevention intervention: a qualitative study and process evaluation.** *J Public Health (Oxf)* 2011, **34**(2):236–244.
73. Lawman HG, Wilson DK: **A review of family and environmental correlates of health behaviors in high-risk youth.** *Obesity (Silver Spring)* 2012, **20**(6):1142–1157.
74. Oliver M, Schofield GM, Kolt GS: **Physical activity in preschoolers: understanding prevalence and measurement issues.** *Sports Med* 2007, **37**:1045–1070.
75. Trost SG, Pate RR, Freedson PS, Sallis JF, Taylor WC: **Using objective physical activity measures with youth: how many days of monitoring are needed?** *Med Sci Sports Exerc* 2000, **32**:426–431.
76. Croce RV, Horvat M, McCarthy E: **Reliability and concurrent validity of the movement assessment battery for children.** *Percept Mot Skills* 2001, **93**:275–280.
77. Swinburn B, Egger G, Raza F: **Dissecting obesogenic environments: the development and application of a framework for identifying and prioritizing environmental interventions for obesity.** *Prev Med* 1999, **29**:563–570.

doi:10.1186/1479-5868-10-90

Cite this article as: Bonvin et al.: Effect of a governmentally-led physical activity program on motor skills in young children attending child care centers: a cluster randomized controlled trial. *International Journal of Behavioral Nutrition and Physical Activity* 2013 **10**:90.

Submit your next manuscript to BioMed Central and take full advantage of:

- **Convenient online submission**
- **Thorough peer review**
- **No space constraints or color figure charges**
- **Immediate publication on acceptance**
- **Inclusion in PubMed, CAS, Scopus and Google Scholar**
- **Research which is freely available for redistribution**

Submit your manuscript at
www.biomedcentral.com/submit

