

RESEARCH

Open Access

Establishment of a pancreatic stem cell line from fibroblast-derived induced pluripotent stem cells

Takashi Kuise¹, Hirofumi Noguchi^{2*}, Hiroshi Tazawa¹, Takashi Kawai¹, Masaya Iwamuro³, Issei Saitoh⁴, Hitomi Usui Kataoka⁵, Masami Watanabe⁶, Yasufumi Noguchi⁷ and Toshiyoshi Fujiwara¹

* Correspondence:

n.hirofumi@cehpnet.com

²Department of Surgery, Chiba-East National Hospital, National Hospital Organization, Chiba 260-8712, Japan
Full list of author information is available at the end of the article

Abstract

Background: For cell therapies to treat diabetes, it is important to produce a sufficient number of pancreatic endocrine cells that function similarly to primary islets. Induced pluripotent stem (iPS) cells represent a potentially unlimited source of functional pancreatic endocrine cells. However, the use of iPS cells for laboratory studies and cell-based therapies is hampered by their high tumorigenic potential and limited ability to generate pure populations of differentiated cell types *in vitro*. The purpose of this study was to establish a pancreatic stem cell line from iPS cells derived from mouse fibroblasts.

Methods: Mouse iPS cells were induced to differentiate into insulin-producing cells by a multi-step differentiation protocol, which was conducted as described previously with minor modifications. Selection of the pancreatic stem cell was based on morphology and Pdx1 expression. The pancreatic potential of the pancreatic stem cells was evaluated using a reverse transcription PCR, real-time PCR, immunofluorescence, and a glucose challenge test. To assess potential tumorigenicity of the pancreatic stem cells, the cells were injected into the quadriceps femoris muscle of the left hindlimb of nude mice.

Results: The iPS-derived pancreatic stem cells expressed the transcription factor β -Pdx1—a marker of pancreatic development, and continued to divide actively beyond passage 80. Endocrine cells derived from these pancreatic stem cells expressed insulin and pancreatic genes, and they released insulin in response to glucose stimulation. Mice injected with the pancreatic stem cells did not develop tumors, in contrast to mice injected with an equal number of iPS cells.

Conclusion: This strategy provides a new approach for generation of insulin-producing cells that is more efficient and safer than using iPS cells. We believe that this approach will help to develop a patient-specific cell transplantation therapy for diabetes in the near future.

Keywords: Mouse pancreatic stem cells, Diabetes, iPS cells

Background

Production of a sufficient number of insulin-producing cells from stem cells that function similarly to primary islets is important for clinical application of stem cell therapy to diabetes. Many studies have reported the differentiation of insulin-producing cells from mouse embryonic stem (ES) cells and, more recently, from human ES cells [1-7]. Unfortunately, these methods involving ES cells have various limitations such as ethical issues during the generation of the cells and immunological rejection after an

allogeneic transplant. Induced pluripotent stem (iPS) cell technology has the potential to generate patient-specific cell types including functional pancreatic endocrine cells [8-11]. However, the use of ES and iPS cells for laboratory studies and cell-based therapies is hampered by their high tumorigenic potential and limited ability to generate pure populations of differentiated cell types *in vitro*.

D'Amour *et al.* developed a 5-step protocol for differentiation of human ES cells into pancreatic hormone-expressing cells in 2006 [12]; this method represented a great step forward in regenerative medicine; however, the use of ES cells in clinical practice is problematic, as explained above. We and other groups have established mouse pancreatic stem cell lines using specific culture conditions [13-15]. We have also demonstrated that young mice have a high number of pancreatic stem cells that can be isolated, but older mice have a low number of pancreatic stem cells, and therefore are unable to provide viable clones [16]. Similarly, human pancreatic stem cells cannot be isolated from 20- to 60-year-old donors [17].

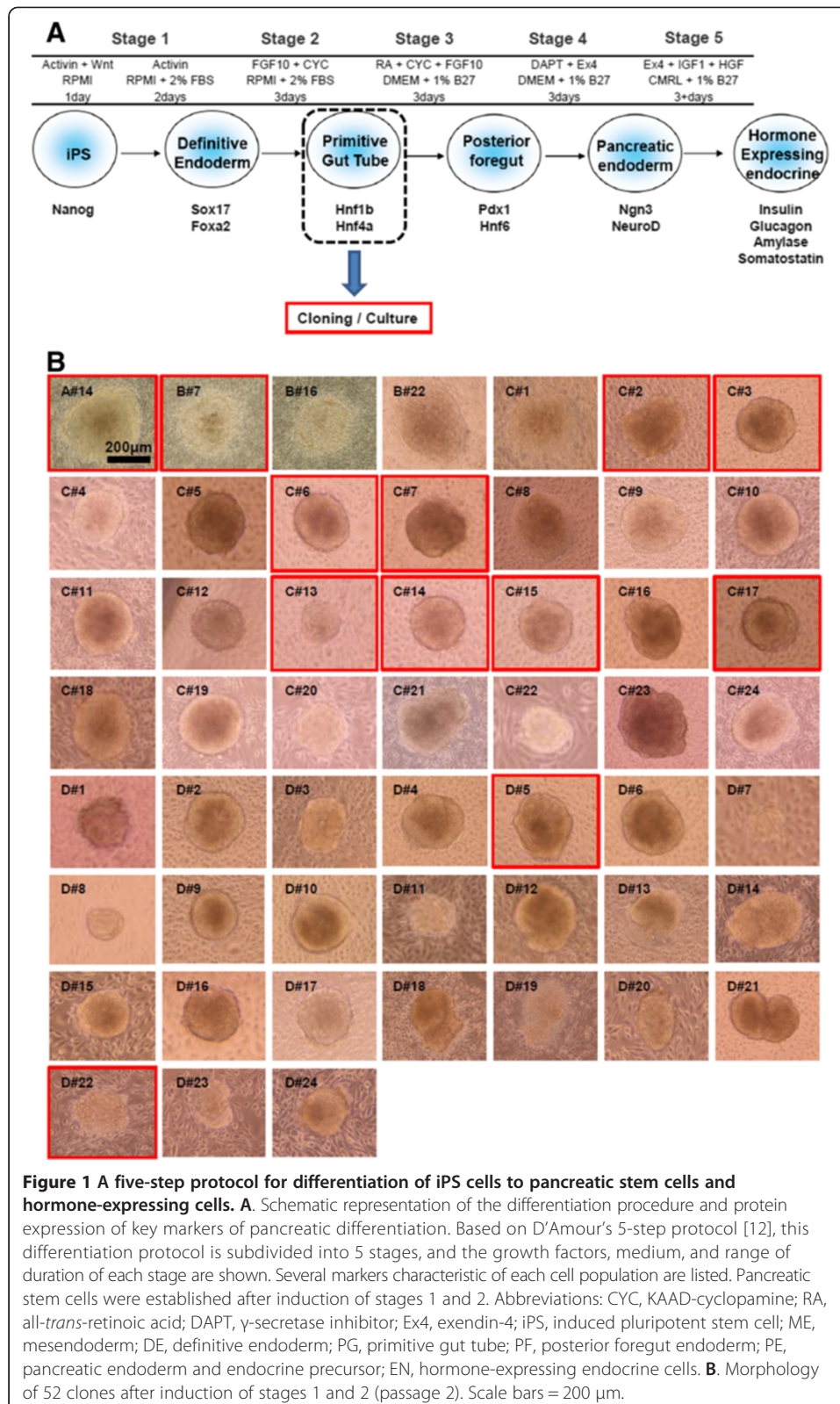
In this study, we established a pancreatic stem cell line from mouse iPS cells, which have the potential for self-renewal and multipotency to generate both endocrine and exocrine pancreatic cells.

Methods

Culture conditions

Mouse iPS cells (iPS-MEF-Ng-20D-17) were provided by the RIKEN BRC through the Project for Realization of Regenerative Medicine and the National Bio-Resource Project of MEXT, Japan [18]. Undifferentiated iPS cells were maintained on mouse embryo fibroblast feeder layers (STO cell line) in Dulbecco's modified Eagle medium (DMEM; Sigma-Aldrich, St Louis, MO, USA) supplemented with 15% (vol/vol) fetal bovine serum (FBS; Millipore, Billerica, MA, USA), 1% nonessential amino acids (Millipore), 1% nucleosides (Millipore), 1% penicillin/streptomycin (Sigma-Aldrich), 110 μ M 2-mercaptoethanol (Life Technologies, Tokyo, Japan), and 500 U/mL leukemia inhibitory factor (LIF; Millipore) at 37°C. Cultures were manually passaged at a 1:4–1:8 split ratio every 3–5 days.

Directed differentiation into insulin-producing cells was conducted as described previously [12], with minor modifications (Figure 1). At stage 1, cells were incubated with 25 ng/mL Wnt3a and 100 ng/mL activin A (R&D Systems, Minneapolis, MN, USA) in the RPMI medium (Life Technologies) at 37°C for 1 day, followed by treatment with 100 ng/mL activin A in RPMI (containing 0.2% FBS) at 37°C for 2 days. At stage 2, the cells were incubated with 50 ng/mL FGF10 (R&D Systems) and 0.25 μ M KAAD-cyclopamine (Toronto Research Chemicals, Toronto, Ontario, Canada) in RPMI (containing 2% FBS) at 37°C for 3 days. At stage 3, the cells were incubated with 50 ng/mL fibroblast growth factor 10 (FGF10), 0.25 μ M KAAD-cyclopamine, and 2 μ M all-*trans* retinoic acid (Sigma-Aldrich) in DMEM with a 1% (vol/vol) B27 supplement (Life Technologies) at 37°C for 3 days. At stage 4, the cells were treated with 1 μ M N-[N-(3,5-Difluorophenacetyl)-L-alanyl]-S-phenylglycine t-butyl ester (DAPT; Sigma-Aldrich) and 50 ng/mL exendin-4 (Sigma-Aldrich) in DMEM with a 1% (vol/vol) B27 supplement at 37°C for 3 days. At stage 5, the cells were incubated with 50 ng/mL exendin-4, 50 ng/mL IGF-1 (Sigma), and 50 ng/mL hepatocyte growth factor (HGF; R&D Systems) in the CMRL medium (Life technologies) with a 1% (vol/vol) B27 supplement at 37°C for 3–6 days.



Tumorigenesis assay

To examine the potential tumorigenicity of candidate clones at passage 50, 1×10^7 cells were injected into the quadriceps femoris muscle of the left hindlimb of nude mice ($n = 3$). As a positive control, we transplanted 1×10^7 iPS cells into the right hindlimb. All mouse studies were approved by the Institutional Animal Care and Use Committee of Okayama University (Reference number: OKU-2011351).

Semi-quantitative RT-PCR

Total RNA was extracted from cells using the RNeasy Mini Kit (Qiagen, Tokyo, Japan). After the RNA was quantified using spectrophotometry, 2.5 μg of the RNA was heated at 85°C for 3 min and then reverse-transcribed into cDNA in a 25- μL reaction containing 200 units of Superscript III RT (Life Technologies), 50 ng of random hexamer primers (Life Technologies), 160 $\mu\text{mol/L}$ dNTP, and 10 nmol/L dithiothreitol. The reaction consisted of 10 min at 25°C, 60 min at 42°C, and 10 min at 95°C. PCRs were performed in a Perkin-Elmer 9700 Thermocycler with 3 μL of cDNA (20 ng RNA equivalent), 160 $\mu\text{mol/L}$ cold dNTPs, 10 pmol of the appropriate oligonucleotide primers, 1.5 mmol/L MgCl_2 , and 5 units of AmpliTaq Gold DNA polymerase (Perkin-Elmer, Waltham, MA, USA). The oligonucleotide primers and cycle numbers used for semi-quantitative PCR are shown in Table 1. The thermal cycle profile used a 10-min denaturing step at 94 C followed by the amplification cycles (1 min denaturation at 94 C, 1 min annealing at 57 C, and 1 min extension at 72°C), with a final extension step of 10 min at 72°C. The steps taken to validate these measurements were previously reported [19].

TaqMan real-time PCR

Quantification of Ngn3, NeuroD, and insulin-2 mRNA levels was conducted using the TaqMan real-time PCR system according to the manufacturer's instructions (Life Technologies). PCR consisted of 40 cycles including 2 min at 50°C and 10 min at 95°C as initial steps. In each cycle, denaturation was performed for 15 s at 95°C and annealing/extension was 1 min at 60°C. PCR was conducted in 20- μL reaction containing cDNA synthesized from 1,500 ng of total RNA. Standard curves were constructed using cDNA generated from total RNA isolated from primary mouse islets. For each sample, the expression of Ngn3, NeuroD, and insulin-2 was normalized against the β -actin expression level. Mouse Ngn3, NeuroD, and insulin-2 and β -actin primers were obtained commercially (Assays-on-Demand Gene Expression Products; Life Technologies).

Table 1 List of gene-specific primers

Gene	Forward/Reverse primer (5' → 3')
Nanog	cacaggctctttctcagattg/tcttgcttgctcttcacattgg
Pdx1	cggacatctccccatacg/aaagggagctggacgcgg
Insulin-2	tccgctacaatcaaaaacat/gctgggtagtggtgggtcta
Glucagon	agaagggcagagcttggcc/tgctgcttggccctccaagt
Amylase	tggccttctggatcttgc/aaaggtctgcttcttggg
Somatostatin	atgctgtcctgcccgtct/ttctgtctggttgggctc
Gapdh	accacagtcctatgccatcac/tccaccacctgttgcgtga

The glucose challenge

To remove insulin added to the culture medium, cultured cells were washed 10 times with phosphate-buffered saline (PBS). The RPMI medium with a low glucose concentration (2.8 mM) was added, and the cells were cultured at 37°C for 30 min as preincubation. After the preincubation, RPMI with a low glucose concentration (2.8 mM) was added, and the cells were cultured at 37°C for 60 min. This low-glucose medium was then collected. The RPMI medium with a high glucose concentration (20 mM) was then added, and the cells were cultured at 37°C for 60 min. This high-glucose medium was also collected. The collected media were assayed for insulin concentration using an enzyme-linked immunosorbent assay (ELISA; SRL, Tokyo, Japan).

An immunofluorescence assay

Cells were fixed in 4% paraformaldehyde for 20 min. Subsequently, the cells were blocked with 10% serum and 0.2% Triton X-100 in PBS, and then incubated with a primary antibody against mouse insulin (guinea pig polyclonal antibody to mouse insulin, 1:100; Abcam, Tokyo, Japan) overnight at 4°C. The cells were next incubated with a secondary antibody (goat polyclonal antibody against guinea pig IgG, H&L labeled with fluorescein isothiocyanate [FITC], 1:100; Abcam). A medium for fluorescence microscopy that contained 4',6-diamidino-2-phenylindole (DAPI; Vector Laboratories, Burlingame, CA, USA) was used for mounting onto slides.

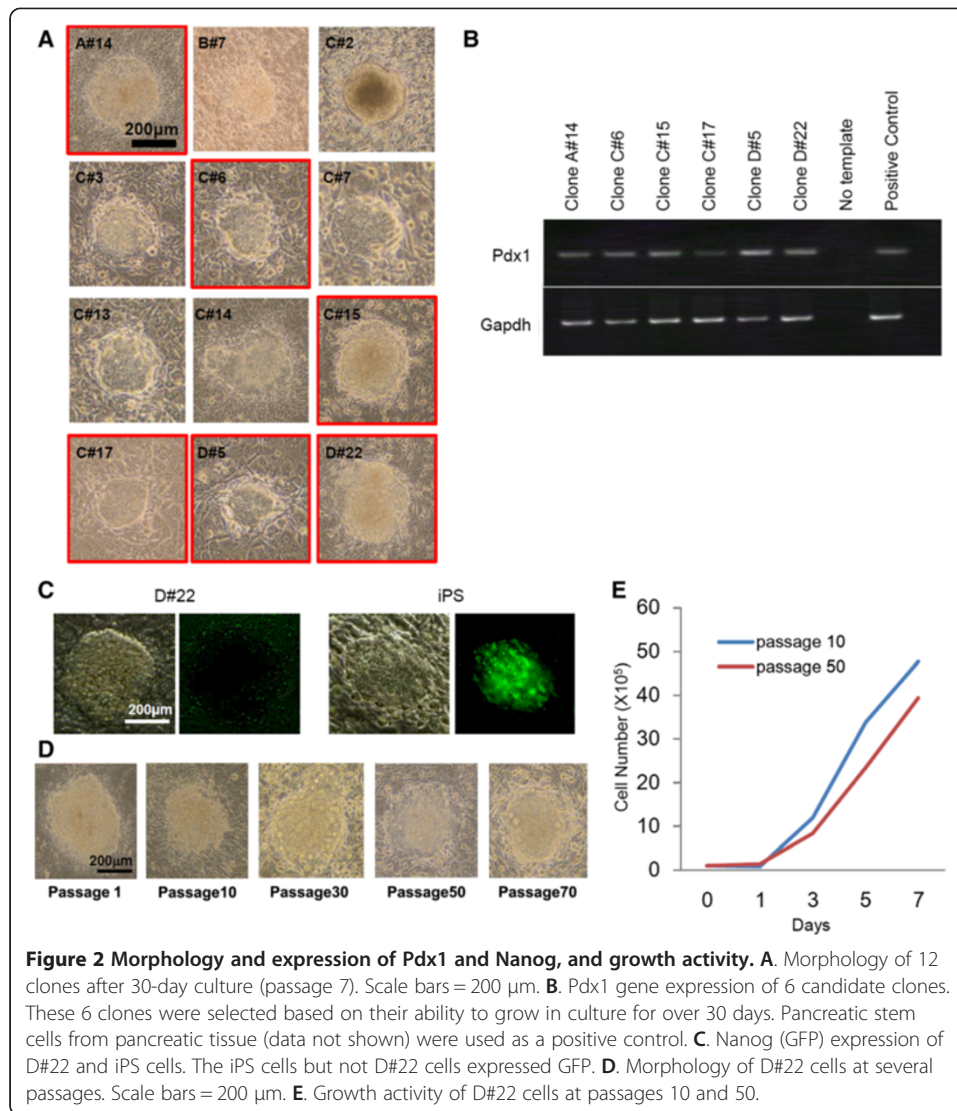
Results

Directed pancreatic differentiation of fibroblast-derived iPS cells

To generate pancreatic stem cells from iPS cells, we applied the D'Amour's protocol [12]. At stage 1, iPS cells differentiated into definitive endoderm using high concentrations of activin A with Wnt3a (day 1) and FBS supplementation (days 2–3). At stage 2, the definitive endoderm cells differentiated into gut tube endoderm through removal of activin A and addition of FGF10 and KAAD-cyclopamine. After the cells were passaged once and cultured for 4 days, the clones were manually picked under a dissecting microscope (Figure 1A). These clones were then cultured on STO feeder cells in the ES culture medium. The 52 clones were cultured and passaged for 30 days (Figure 1B). After the 30-day culture of these clones, 12 clones were still viable (Figure 2A),

Establishment of pancreatic stem cells

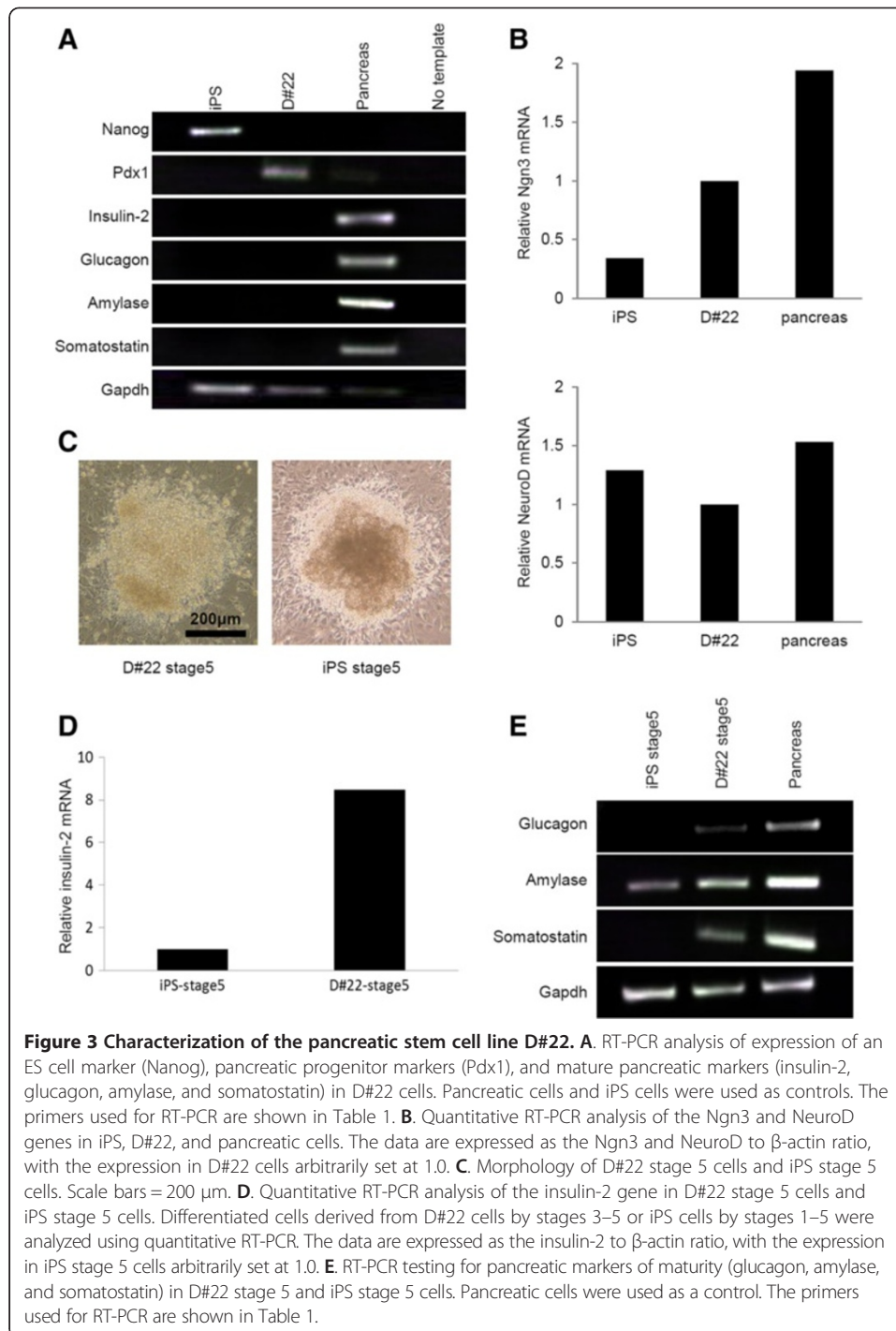
Among the 12 clones, 6 were eliminated because they did not proliferate as actively as did the iPS cells. Expression of pancreatic and duodenal homeobox factor 1 (Pdx1) mRNA, a transcription factor required for pancreatic development and β -cell maturation, in the remaining 6 clones is shown in Figure 2B. The proliferative activity of 4 of the 6 clones significantly decreased during a 60-day culture after the isolation. Therefore, we selected the 2 clones (C#15 and D#22) that maintained a constant cell proliferation rate as candidate clones for differentiation into pancreatic stem cells. Clone C#15 was ascertained to have a tumorigenic potential. Finally, clone D#22 was selected (Figure 2C). D#22 cells did not express green fluorescent protein (GFP), whereas the



iPS cells in this study expressed GFP according to Nanog expression [18]; this result suggests that D#22 cells do not express Nanog and are therefore different from iPS cells (Figure 2C).

Morphology, gene expression, and growth activity of the pancreatic stem cell line D#22

Clone D#22 formed a flat “cobblestone” monolayer, which is characteristic of cultured duct cells [20]. D#22 cells continued to divide actively beyond passage 80 (over 6 months) without changes in morphology (Figure 2D) or in growth activity (Figure 2E). We performed normal and quantitative RT-PCR testing of clone D#22 for ES cell markers, endodermal/pancreatic progenitor cell markers, and pancreatic cell markers. Mouse pancreas cDNA and iPS cells were used as controls. Representative genes of the posterior foregut (Pdx1) and pancreatic endoderm (Ngn3, NeuroD) were expressed by clone D#22, whereas genes typically expressed in undifferentiated iPS cells (Nanog) and in pancreatic tissue (insulin, glucagon, amylase, and somatostatin) were not expressed in D#22 (Figure 3A, B).



The differentiation capacity of the pancreatic stem cell line D#22

For differentiation of D#22 cells into insulin-producing cells, the following protocols were used (stages 3–5 in Figure 1A). At the final stage of differentiation, D#22 cells underwent a morphological transition (Figure 3C). The differentiated cells derived from D#22 cells, named D#22 stage 5 cells, were tested for pancreas-specific gene expression and insulin production. Mouse iPS cells were also induced to differentiate using the 5-step protocol (Figure 1); the pancreatic potential of the final product (iPS stage 5

cells) was compared with that of D#22 stage 5 cells. Quantitative PCR demonstrated that levels of insulin 2 mRNA were 8.46-fold higher in D#22 stage 5 cells than in iPS stage 5 cells (Figure 3D). D#22 stage 5 cells were positive for gene expression of hormones produced in the endocrine pancreas (e.g., insulin, glucagon, and somatostatin) in addition to a representative enzyme produced in the exocrine pancreas (amylase; Figure 3E).

Insulin expression and functional analysis of D#22 stage 5 cells

To determine whether D#22 cells could differentiate into insulin-producing cells, immunofluorescence analysis was performed. Some D#22 stage 5 cells were positive for insulin, and the insulin-positive cells were C-peptide positive, thus excluding the possibility of insulin uptake from the medium (Figure 4A).

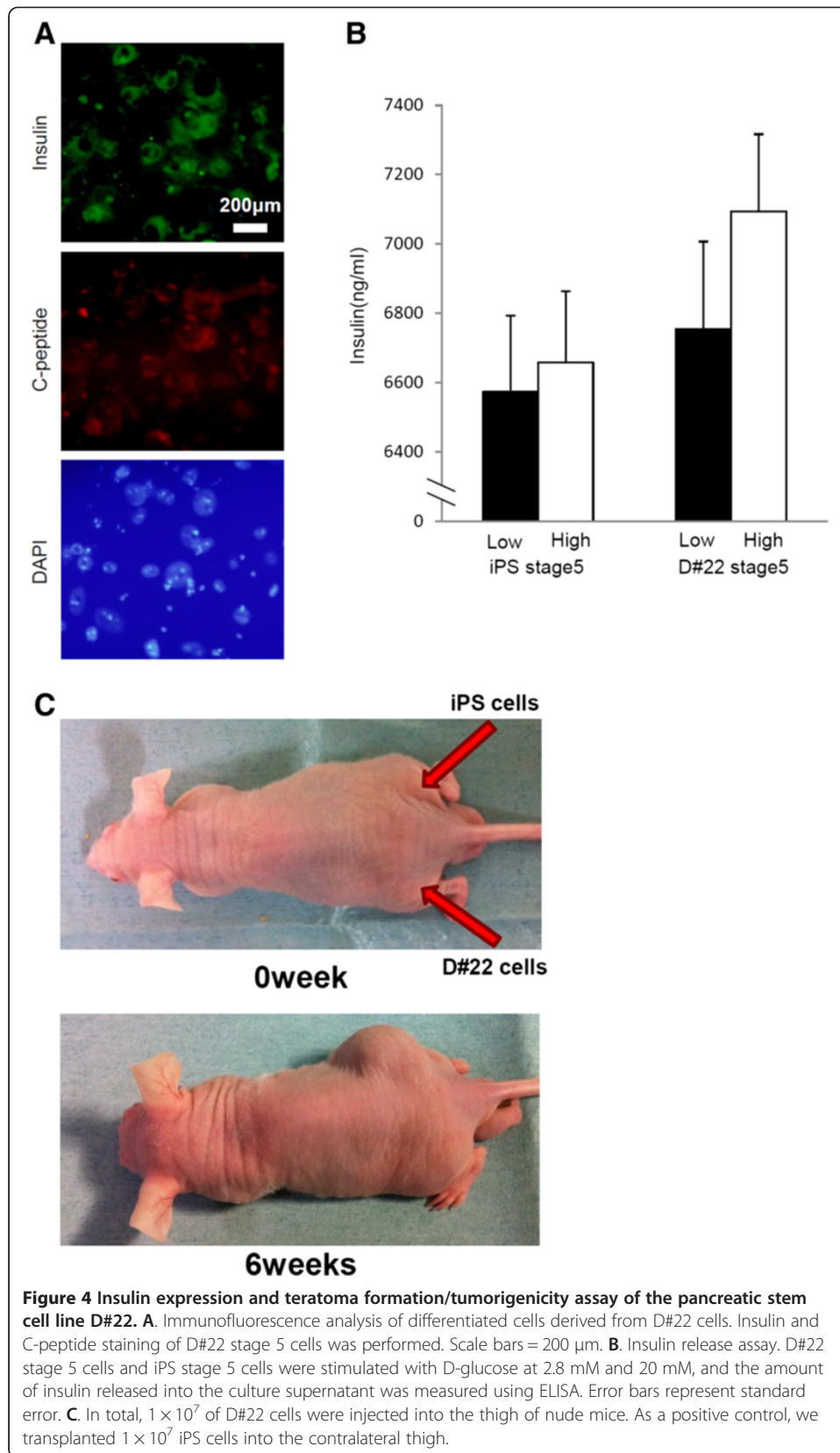
To evaluate the insulin production of D#22 stage 5 cells, a glucose challenge test was performed *in vitro*. The amount of insulin secreted by D#22 stage 5 cells tended to increase when the glucose concentration of the medium was high, whereas iPS stage 5 cells showed little or no response to the glucose challenge (Figure 4B). These data suggested that D#22 stage 5 cells had the ability to secrete insulin in response to the pathological glucose concentrations similar to those in diabetic patients.

Tumorigenicity of the pancreatic stem cell line D#22

To rule out the possibility of teratoma formation as a result of contamination with iPS cells or spontaneous transformation of D#22 cells, the tumorigenic potential was tested *in vivo*. D#22 cells (1×10^7) at passage 50 were transplanted into nude mice ($n = 3$), and no tumors developed after 2 months. In contrast, injection of 1×10^7 iPS cells resulted in tumor development after 2 weeks. Tumors derived from the iPS cells became larger over time and had a size of 40 mm at 2 months after transplantation (Figure 4C).

Discussion

In this study, we established a pancreatic stem cell line, D#22, from mouse fibroblast-derived iPS cells. Generally, stem cells are defined as cells capable of self-renewal that can develop into various lineages in the body. D#22 cells were maintained by repeated passaging for more than 6 months without growth inhibition, which indicates that D#22 cells have the potential for self-renewal. The differentiated D#22 stage 5 cells express insulin, glucagon, amylase, and somatostatin mRNA; these data indicate that D#22 cells can generate both endocrine and exocrine pancreatic lineages. Consequently, we consider the clone D#22 a pancreatic stem cell line. As shown in Figure 3A, D#22 cells express Pdx1, Ngn3, and NeuroD. Pdx1-expressing epithelial progenitors are involved in the development of organs during embryogenesis, especially the cells giving rise to the endocrine, exocrine, and ductal cells of the pancreas [21]. Ngn3 is expressed in all endocrine progenitors [21], initiating a cascade of expression of transcription factors that control endocrine cell differentiation. NeuroD, a basic helix-loop-helix (bHLH) transcription factor, is also a key regulator of pancreatic islet morphogenesis and insulin gene transcription [22,23]. However, D#22 cells did not express key transcription factors of ES cells (Nanog) or mature pancreatic cells (insulin, glucagon,



amylase, and somatostatin). These data indicate that D#22 cells have the characteristics of pancreatic endoderm-committed intermediates or pancreatic progenitors.

D#22 stage 5 cells secreted insulin in response to glucose stimulation, and immunofluorescent analysis of the differentiated cells showed production of insulin and C-peptide. Moreover, in the real-time PCR analysis, mRNA expression of insulin 2 was 8.46-fold higher in D#22 stage 5 cells than in iPS stage 5 cells generated using the same stepwise differentiation protocol. In addition, clone D#22 is not tumorigenic, whereas transplanted iPS cells rapidly form tumors. In general, tumorigenesis is a major concern in the clinical application of stem cell therapy. Therefore, we can conclude that D#22 cells are potentially a more useful cell source for β -cell replacement therapy in diabetes than iPS cells because the former are safer and capable of generating greater numbers of functional insulin-producing cells. Nevertheless, the level of insulin expression was still low; suggesting that the induced cells were still immature. Therefore, it is necessary to develop a more efficient differentiation protocol for production of insulin-producing cells.

The advantages of D#22 cells compared with iPS cells are 1) more efficient differentiation, and 2) no teratoma formation. Recently, a self-renewing endodermal progenitor (EP) cell line generated from human ES and iPS cells was reported [24]. The self-renewing EP cells display morphological properties and a gene expression pattern characteristic of a definitive endoderm. These EP cells differentiate into pancreatic cells, hepatocytes, and intestinal epithelial cells. Moreover, EP cells are not tumorigenic *in vivo*. D#22 cells may be similar to EP cells, but are likely to be differentiated further into the pancreatic lineage because they express the Pdx1, Ngn3, and NeuroD transcription factors.

Conclusions

We established a mouse pancreatic stem cell line from iPS cells derived from mouse embryonic fibroblasts. This clonal cell line has the ability of self-renewal and efficiently differentiates into insulin-producing cells without any signs of tumorigenesis. Therefore, this strategy provides a new approach for generation of insulin-producing cells more efficiently and safely compared to iPS cells. We believe that this approach will help implement a patient-specific cell transplantation therapy for diabetic patients in the near future.

Abbreviations

DAPI: 4',6-diamidino-2-phenylindole; DAPT: N-[N-(3,5-Difluorophenacetyl)-L-alanyl]-S-phenylglycine t-butyl ester; DMEM: Dulbecco's modified Eagle medium; ES: Embryonic stem, FBS, fetal bovine serum; FGF10: Fibroblast growth factor 10; FITC: Fluorescein isothiocyanate; Foxa2: Forkhead box protein a2; GFP: Green fluorescent protein; HGF: Hepatocyte growth factor; IGF-1: Insulin-like growth factor 1; iPS: Induced pluripotent stem; LIF: Leukemia inhibitory factor; MEXT: Ministry of Education, Culture, Sports, Science, and Technology of Japan; Pdx1: Pancreatic and duodenal homeobox factor 1.

Competing interests

The authors declare that they have no competing interests.

Authors' contributions

TK carried out most of the experimental work with the help of HT, TK, MI. HN designed the experiments and analyzed the data. IS, HUK, MW, YN and TF provided materials and discussion. TK and HN wrote the manuscript. All authors discussed and commented on the manuscript. All authors read and approved the final manuscript.

Acknowledgements

This work was supported in part by the Japan Society for the Promotion of Science; the Ministry of Health, Labor, and Welfare; and the Okayama Medical Foundation.

Author details

¹Department of Gastroenterological Surgery, Okayama University Graduate School of Medicine, Dentistry and Pharmaceutical Sciences, Okayama 700-8558, Japan. ²Department of Surgery, Chiba-East National Hospital, National Hospital Organization, Chiba 260-8712, Japan. ³Department of Gastroenterology and Hepatology, Okayama University Graduate School of Medicine, Dentistry, and Pharmaceutical Sciences, Okayama 700-8558, Japan. ⁴Department of Pediatric Dentistry, Niigata University Graduate School of Medical and Dental Sciences, Niigata 951-8514, Japan. ⁵Department of Primary Care and Medical Education, Okayama University Graduate School of Medicine, Dentistry and Pharmaceutical Sciences, Okayama 700-8558, Japan. ⁶Department of Urology, Okayama University Graduate School of Medicine, Dentistry and Pharmaceutical Sciences, Okayama 700-8558, Japan. ⁷Department of Socio-environmental Design, Hiroshima International University, Hiroshima 737-0112, Japan.

Received: 2 April 2014 Accepted: 23 May 2014

Published: 27 May 2014

References

1. Bonner-Weir S, Weir GC: **New sources of pancreatic beta-cells.** *Nat Biotechnol* 2005, **23**(7):857–861.
2. Madsen OD: **Stem cells and diabetes treatment.** *APMIS* 2005, **113**(11–12):858–875.
3. Assady S, Maor G, Amit M, Itskovitz-Eldor J, Skorecki KL, Tzukerman M: **Insulin production by human embryonic stem cells.** *Diabetes* 2001, **50**(8):1691–1697.
4. Segev H, Fishman B, Ziskind A, Shulman M, Itskovitz-Eldor J: **Differentiation of human embryonic stem cells into insulin-producing clusters.** *Stem Cells* 2004, **22**(3):265–274.
5. Baharvand H, Jafary H, Massumi M, Ashtiani SK: **Generation of insulin-secreting cells from human embryonic stem cells.** *Dev Growth Differ* 2006, **48**(5):323–332.
6. Xu X, Kahan B, Forgianni A, Jing P, Jacobson L, Browning V, Treff N, Odorico J: **Endoderm and pancreatic islet lineage differentiation from human embryonic stem cells.** *Cloning Stem Cells* 2006, **8**(2):96–107.
7. Kwon YD, Oh SK, Kim HS, Ku SY, Kim SH, Choi YM, Moon SY: **Cellular manipulation of human embryonic stem cells by TAT-PDX1 protein transduction.** *Mol Ther* 2005, **12**(1):28–32.
8. Takahashi K, Tanabe K, Ohnuki M, Narita M, Ichisaka T, Tomoda K, Yamanaka S: **Induction of pluripotent stem cells from adult human fibroblasts by defined factors.** *Cell* 2007, **131**(5):861–872.
9. Yu J, Vodyanik MA, Smuga-Otto K, Antosiewicz-Bourget J, Frane JL, Tian S, Nie J, Jonsdottir GA, Ruotti V, Stewart R, Slukvin II, Thomson JA: **Induced pluripotent stem cell lines derived from human somatic cells.** *Science* 2007, **318**(5858):1917–1920.
10. Park IH, Arora N, Huo H, Maherali N, Ahfeldt T, Shimamura A, Lensch MW, Cowan C, Hochedlinger K, Daley GQ: **Disease-specific induced pluripotent stem cells.** *Cell* 2008, **134**(5):877–886.
11. Dimos JT, Rodolfa KT, Niakan KK, Weisenthal LM, Mitsumoto H, Chung W, Croft GF, Saphier G, Leibel R, Goland R, Wichterle H, Henderson CE, Eggan K: **Induced pluripotent stem cells generated from patients with ALS can be differentiated into motor neurons.** *Science* 2008, **321**(5893):1218–1221.
12. D'Amour KA, Bang AG, Eliazar S, Kelly OG, Agulnick AD, Smart NG, Moorman MA, Kroon E, Carpenter MK, Baetge EE: **Production of pancreatic hormone-expressing endocrine cells from human embryonic stem cells.** *Nat Biotechnol* 2006, **24**(11):1392–1401.
13. Noguchi H, Oishi K, Ueda M, Yukawa H, Hayashi S, Kobayashi N, Levy MF, Matusmoto S: **Establishment of mouse pancreatic stem cell line.** *Cell Transplant* 2009, **18**(5):563–571.
14. Yamamoto T, Yamato E, Taniguchi H, Shimoda M, Tashiro F, Hosoi M, Sato T, Fujii S, Miyazaki JI: **Stimulation of cAMP signaling allows isolation of clonal pancreatic precursor cells from adult mouse pancreas.** *Diabetologia* 2006, **49**(10):2359–2367.
15. Noguchi H, Saitoh I, Kataoka HU, Watanabe M, Noguchi Y, Fujiwara T: **Culture conditions for mouse pancreatic stem cells.** *Cell Med* 2013, **5**(2–3):63–68.
16. Kuise T, Noguchi H, Saitoh I, Kataoka HU, Watanabe M, Noguchi Y, Fujiwara T: **Isolation efficiency of mouse pancreatic stem cells is age-dependent.** *Cell Med* 2013, **5**(2–3):69–73.
17. Noguchi H, Naziruddin B, Jackson A, Shimoda M, Ikemoto T, Fujita Y, Chujo D, Takita M, Kobayashi N, Onaca N, Hayashi S, Levy MF, Matsumoto S: **Characterization of human pancreatic progenitor cells.** *Cell Transplant* 2010, **19**(6):879–886.
18. Okita K, Ichisaka T, Yamanaka S: **Generation of germline-competent induced pluripotent stem cells.** *Nature* 2007, **448**(7151):313–317.
19. Noguchi H, Iwanaga Y, Okitsu T, Nagata H, Yonekawa Y, Matsumoto S: **Evaluation of islet transplantation from non-heart beating donors.** *Am J Transplant* 2006, **6**(10):2476–2482.
20. Bonner-Weir S, Baxter LA, Schuppin GT, Smith FE: **A second pathway for regeneration of adult exocrine and endocrine pancreas: a possible recapitulation of embryonic development.** *Diabetes* 1993, **42**(12):1715–1720.
21. Gu G, Dubauskaite J, Melton DA: **Direct evidence for the pancreatic lineage: NGN3+ cells are islet progenitors and are distinct from duct progenitors.** *Development* 2002, **129**(10):2447–2457.
22. Lee JE, Hollenberg SM, Snider L, Turner DL, Lipnick N, Weintraub H: **Conversion of Xenopus ectoderm into neurons by NeuroD, a basic helix–loop–helix protein.** *Science* 1995, **268**(5212):836–844.
23. Naya FJ, Stellrecht CM, Tsai MJ: **Tissue-specific regulation of the insulin gene by a novel basic helix–loop–helix transcription factor.** *Genes Dev* 1995, **9**(8):1009–1019.
24. Cheng X, Ying L, Lu L, Galvão AM, Mills JA, Lin HC, Kotton DN, Shen SS, Nostro MC, Choi JK, Weiss MJ, French DL, Gadue P: **Self-renewing endodermal progenitor lines generated from human pluripotent stem cells.** *Cell Stem Cell* 2012, **10**(4):371–384.

doi:10.1186/1475-925X-13-64

Cite this article as: Kuise et al.: Establishment of a pancreatic stem cell line from fibroblast-derived induced pluripotent stem cells. *BioMedical Engineering OnLine* 2014 **13**:64.