

ORAL PRESENTATION

Open Access

Studies on the breeding swarms of *Anopheles gambiae* complex in malaria control perspective

Benoît S Assogba^{1,2*}, Luc S Djogbenou^{1,2}, Roch K Dabiré³, Abdoulaye Diabaté³, Thierry Baldet²

From Parasite to Prevention: Advances in the understanding of malaria
Edinburgh, UK. 20-22 October 2010

Background

To reduce malaria transmission through vector control, alternative measures are necessary as transgenic mosquitoes are resistant to *Plasmodium* [1] and sterile insect technique (SIT) [2]. Both approaches require a fine understanding of the biology of reproduction of *Anopheles gambiae* complex. This study aims to characterize the swarm structure and several environmental parameters associated with distribution of breeding swarms and sites in the south of Benin.

Methods

After the survey in field, molecular analyses were done and productive breeding sites, breeding swarms and human habitations positions were integrated into a map using a geographic information system.

Results

The molecular identification of 510 males collected from 17 swarms and 680 females from larvae of *An. gambiae* s.l. has allowed the description of breeding swarms and sites characteristic of two species: *An. gambiae* M and *An. melas* (Figures 1, 2,3) as well as their distribution (Figures 4, 5). These results indicate that the swarming and mating system involved mainly mosquitoes of the same species, suggesting the existence of specific factors related to the mating system of each species.

Conclusion

Further studies on the swarming and mating system of *An. gambiae* s.l. need to be conducted to produce a predictive model of swarm distribution to aid malaria eradication strategies based on the use of generalized method of moments and SIT.

Acknowledgements

We are very grateful to MIM/TDR/WHO for financial support. MIM grant ID: A80690.

Author details

¹IRSP/UAC, 01BP918Cotonou, Bénin. ²CREC/IRD/UR016, 06BP2604Cotonou, Benin. ³Centre Muraz/IRSS BP 390 Bobo-Dioulasso, Burkina-Faso.

Published: 20 October 2010

References

1. WHO: Report on planning meeting 1. 2010, Geneva, Switzerland, 4-6 May 2009.
2. Alphey L, Benedict M, Bellini R, Clark GG, Dame DA, Service MW, Dobson SL: Sterile-insect methods for control of mosquito-borne diseases: an analysis. *Vector Borne Zoonotic Dis* 2010, **10**:295-31.

doi:10.1186/1475-2875-9-S2-O1

Cite this article as: Assogba et al.: Studies on the breeding swarms of *Anopheles gambiae* complex in malaria control perspective. *Malaria Journal* 2010 **9**(Suppl 2):O1.

Submit your next manuscript to BioMed Central and take full advantage of:

- Convenient online submission
- Thorough peer review
- No space constraints or color figure charges
- Immediate publication on acceptance
- Inclusion in PubMed, CAS, Scopus and Google Scholar
- Research which is freely available for redistribution

Submit your manuscript at
www.biomedcentral.com/submit



¹IRSP/UAC, 01BP918Cotonou, Bénin
Full list of author information is available at the end of the article

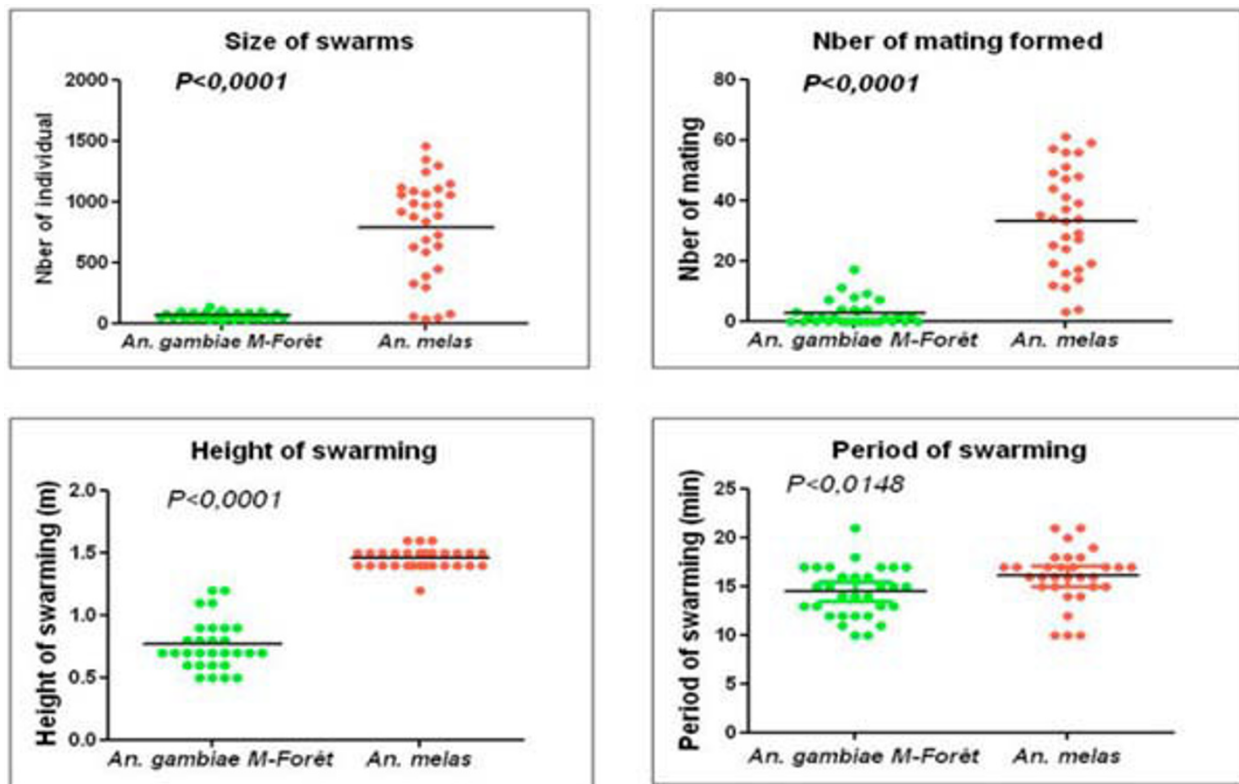


Figure 1 Comparison of swarm size, swarming period, height and number of mating couples observed between the swarms of *An. gambiae* s.s. M and *An. melas*.

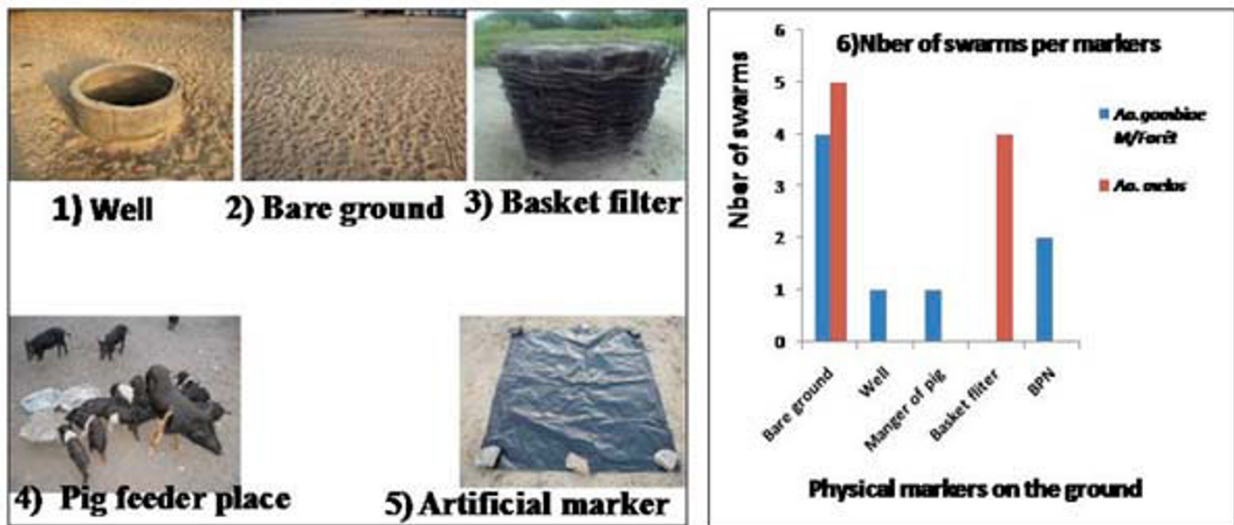


Figure 2 Physical markers of *An.gambiae* M and *An. melas* swarm sites.

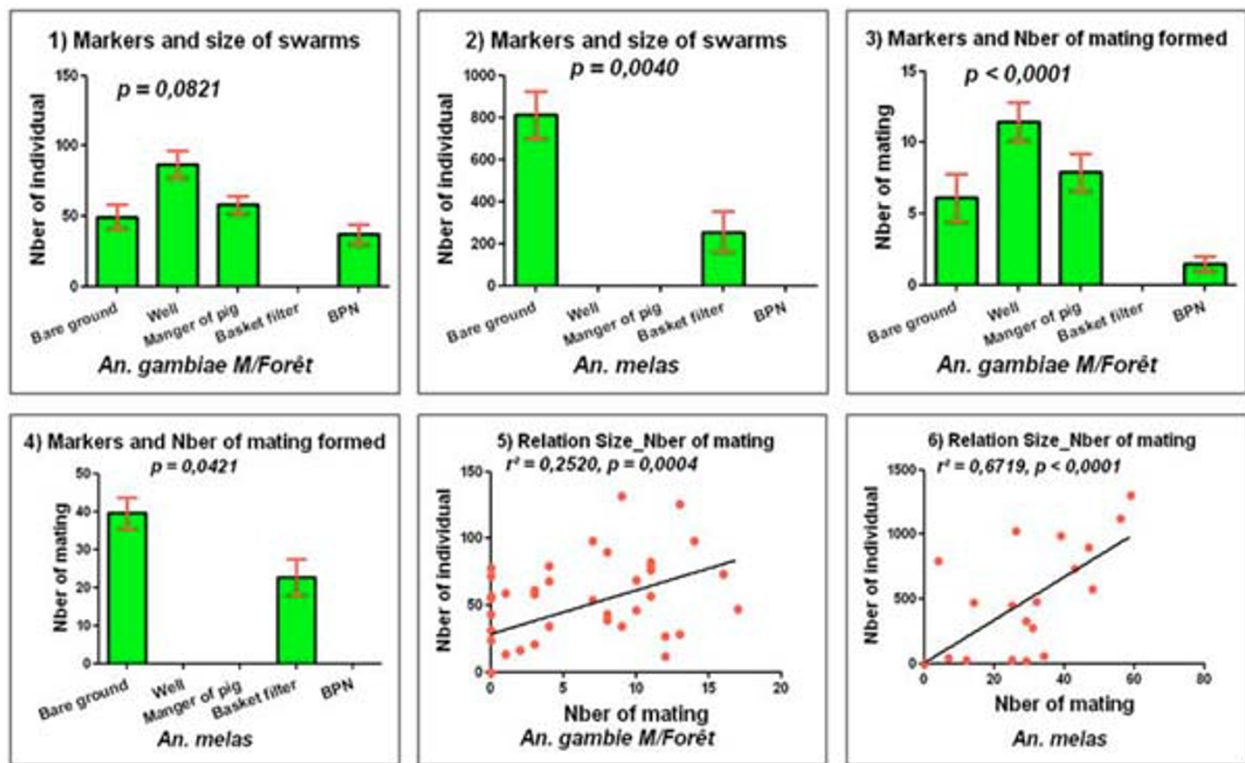


Figure 3 Relation between swarming markers and size and mating of swarms of *An. gambiae s.*

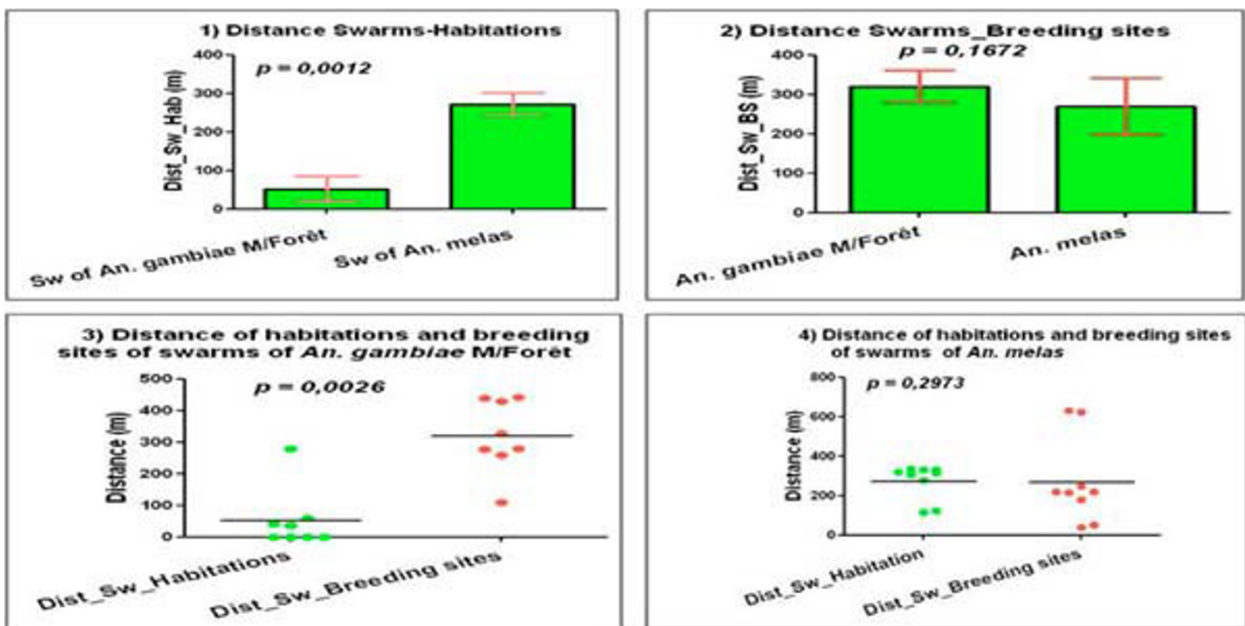


Figure 4 Relation between swarms, mosquito breeding sites and human house distribution in the study site.

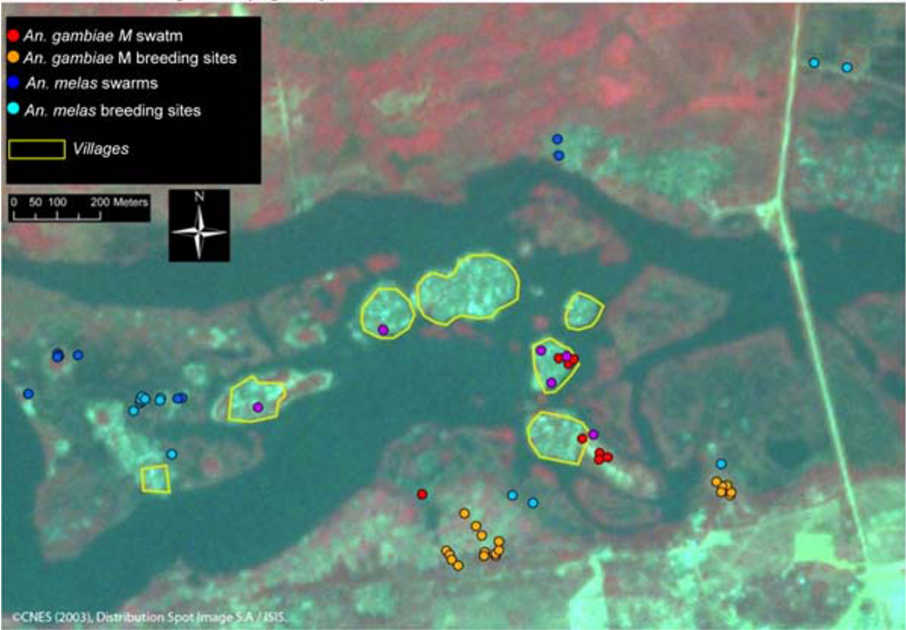


Figure 5 Distribution map of swarms and mosquito breeding sites of *An. gambiae* s.s. M and *An. melas* in the village of Djègbadji.