

Research

Open Access

Spatial malaria epidemiology in Bangladeshi highlands

Ubydul Haque¹, Mamun Huda¹, Awlad Hossain², Syed Masud Ahmed²,
Mohammad Moniruzzaman³ and Rashidul Haque*¹

Address: ¹International Center for Diarrhoeal Disease Research Bangladesh, 68 Shaheed Tajuddin Ahmed Sharani, Mohakhali, Dhaka 1212, (GPO Box 128, Dhaka 1000), Bangladesh, ²BRAC, BRAC Centre, 75 Mohakhali, Dhaka 1212, Bangladesh and ³Local Government and Engineering Department, GIS Unit, Agargaon, Dhaka, Bangladesh

Email: Ubydul Haque - ubydul@icddr.org; Mamun Huda - mhuda83@icddr.org; Awlad Hossain - awlad.hossain@brac.net; Syed Masud Ahmed - sma@brac.net; Mohammad Moniruzzaman - mzaman1972@yahoo.com; Rashidul Haque* - rhaque@icddr.org

* Corresponding author

Published: 5 August 2009

Received: 8 April 2009

Malaria Journal 2009, **8**:185 doi:10.1186/1475-2875-8-185

Accepted: 5 August 2009

This article is available from: <http://www.malariajournal.com/content/8/1/185>

© 2009 Haque et al; licensee BioMed Central Ltd.

This is an Open Access article distributed under the terms of the Creative Commons Attribution License (<http://creativecommons.org/licenses/by/2.0>), which permits unrestricted use, distribution, and reproduction in any medium, provided the original work is properly cited.

Abstract

Background: Malaria is a major public health burden in the south-eastern part of Bangladesh, particularly in the Chittagong Hill Tracts region. In 2007, BRAC and ICDDR,B carried out a malaria prevalence survey in the endemic regions including the Khagrachari District.

Methods: This study was done to detect clusters of malaria and identify the geographic risk factors. Thirty mauzas (the lowest administrative unit/bigger than village in Bangladesh that has polygon boundary) from the area were selected for the survey using probability proportional to size (PPS) sampling. Twenty-five households within each mauza were then randomly selected for screening, with a GPS point being recorded at each household. Rapid diagnostic tests were used to diagnose malaria.

Results: The average malaria prevalence in the District was 15.47% (n = 750). SaTScan detected five geographic clusters of malaria, one of which was highly significant (p = 0.001). Malaria cases were significantly associated with proximity to water bodies and forests.

Conclusion: The data presented in this paper are the first step to understanding malaria in southeastern Bangladesh from a micro-geographic perspective. The study results suggest that there are 'malaria hot-spots' in the study area. The government of Bangladesh and non-governmental organizations involved in malaria control should consider these results when planning malaria control measures. In particular, malaria maps should be updated on a regular basis as new data become available.

Background

Malaria is a major health burden in the south-eastern part of Bangladesh, especially in the Chittagong Hill Tracts [1]. In 13 endemic districts, total malaria prevalence was 3.97% with the rapid diagnosis test (BRAC and ICDDR,B unpublished report). To control malaria in hilly forest

areas is a big challenge in many parts of Asia and South America [2].

Disease mapping techniques help to control malaria, especially in high malaria transmission areas. In order to control malaria, application of GIS and GPS was reported

in India, Thailand and Madagascar. GIS was used to detect high risk areas and for malaria surveillance in India. In Thailand, GIS has proven to be a significant tool for forecasting malaria epidemics [3]. These statistical techniques depend on case event and count data, where geographic locations (x, y coordinates) are represented as points. Recently, Geographic information system (GIS) and remote sensing (RS) technology have enabled scientists and epidemiologists to study vector borne disease, mapping, to explore environmental relations, and to understand spatial and temporal distribution [4].

Mosquito vectors breed near rivers, pools, agricultural lands and forests; they depend on the existence of water and river flow [5]. Malaria risk maps were developed in Sri Lanka based on the household distance from streams and rivers that are known as potential vector breeding sites. People living within 750 meters of streams were identified as high-risk groups [6]. In southern Ontario, Canada, SaT-Scan was used to investigate spatial clusters of giardiasis. SaTScan successfully identified approximate locations and spatial clusters [7]. Recently GIS, GPS and spatial statistics have also been used in malaria research and control in sub-Saharan African countries. Malaria maps have long been considered an important tool to control malaria. Generally this type of map is used to predict risk [8].

In order to detect aggregation of disease cases, cluster detection is very important. Until now, there is no published report on the micro-geographic distribution of malaria incidence or prevalence in Bangladesh. This study uses GIS, GPS, and SaTScan tools to detect geographic clusters of malaria, to assess association between malaria cases and geographic risk factors.

Methods

Data collection and data preparation

The population figures from 2001 population census of Bangladesh were used for sampling [9]. Multi-stage cluster sampling technique was used. Sample size was calculated using web-based software C-Survey 2.0 based on the conservative estimates of malaria prevalence and design effect. In Khagrachari, all mauzas were listed and 30 mauzas (the lowest administrative unit of Bangladesh that have polygon boundary) were selected using a probability proportional to size (PPS) sampling procedure. These mauzas are the study clusters. City corporations and towns were not included in this survey. Thirty mauzas were selected for this survey. Twenty-five households were selected using systematic randomization from each mauza. In each cluster, the study team drew a map. Households were then chosen through a systematic random sampling as mentioned above. Simple random sampling was then used to select one individual from each household. This individual was screened using rapid diag-

nostic tests for malaria after obtaining written informed consent from the individual or their legal guardian.

Rapid diagnostic tests

Malaria was diagnosed by using rapid diagnostic tests (RDT, Falcivax) to detect *Plasmodium falciparum* and *Plasmodium vivax*-specific antigens. The trade name of this RDT is "Falcivax" and is produced by Zephyr Biomedicals, India <http://www.tulipgroup.com>. Each Falcivax is rapid self-performing, qualitative, two site sandwich immunoassay utilizing whole blood for the detection of *P. falciparum*-specific histidine rich protein-2 (Pf, HRP-2) and *P. vivax*-specific pLDH. The test can be used for specific detection and differentiation of *P. falciparum* and *P. vivax* malaria. The standardization of this test has already been done by the Zephyr Biomedicals. Sensitivity of the RDT is similar to that commonly achieved by good field microscopy. Sensitivity and specificity of the RDT used for the detection of *P. falciparum* and *P. vivax* is more than 95% and now been recommended for use in the malaria control programme by the World Health Organization [10-12]. A recent study in India also confirmed the reliability of Falcivax to diagnosis malaria [13].

GPS data collections

The coordinates (longitude and latitude) of all selected households (n = 750) were recorded on-site using eTrex Venture single handheld GPS receivers. GPS points were uploaded to a Fox Pro database system and cleaned for duplicates. Household positions were printed in hard copy and accuracy was checked at the field level. Water and forest data were obtained from the Local Government and Engineering Department (LGED) of the Government of Bangladesh (figure 1). Distances between points of interest were calculated using the following equation:

$$\text{Distance} = \sqrt{(x_2 - x_1)^2 + (y_2 - y_1)^2}$$

Study area and population

Khagrachari is a hilly area covered with forests, lakes and streams that have provided an excellent breeding ground for malaria vector. It is surrounded by Tripura (Indian state) to the north, Rangamati and Chittagong to the south, Rangamati to the east and Chittagong and Tripura to the west. Khagrachari has a total area of 2,699.55 square kilometer and a total population of 524,961. The temperature ranges from 13°C to 34.6°C and annual rainfall is 3,031 mm.

Data analysis

Epidemiologic information and laboratory results were linked to each household's GPS data. Maps were produced with Arc GIS 9.1 software. SaTScan (v. 07) was used to detect spatial clusters (settings: spatial analysis; Ber-

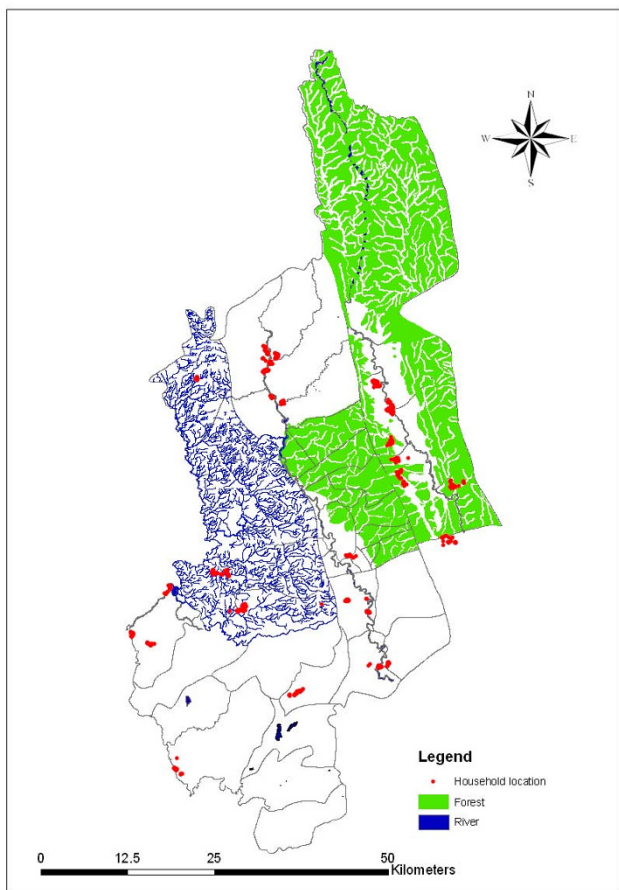


Figure 1
Land use map of Khagrachari.

noulli probability model; Cartesian coordinates; no geographical overlap). Clusters were determined by calculating the maximum likelihood ratio. Standardized incidence ratios (SIR) were estimated by dividing the number of observed cases by the number of expected cases in each cluster. Simulated p-values were obtained using Monte Carlo methods with 9,999 replications. Statistical analyses were done with SPSS 11.5 software. Multiple logistic regression models were used to control for confounding.

Results

The average malaria prevalence in Khagrachari district was 15.47% (n = 750). [District is divided into several thanas. Thanas are again divided into unions. Again unions are divided into mauzas the lowest administrative unit in Bangladesh]. Table 1 lists the individual prevalence of malaria for the thanas in Khagrachari. The highest prevalence was found in Dighinala (22%) and lowest prevalence was found in Panchari (5.72%). SaTScan was used to detect malaria clusters in Khagrachari (n = 750). Table 2 presents there were five clusters in total. Among them,

Table 1: Malaria prevalence in Khagrachari district

Thana	Prevalence (%)
Dighinala	22
Panchari	5.72
Manikchari	8
Khagrachari sador	10
Mahalchari	16
Ramgarh	21.34
Matiranga	21.6

one was most likely clustered and four were secondary clusters (figure 2). The most likely malaria case cluster area is in Dighinala thana (RR = 3.381; p = 0.0002). In most of the secondary clusters, the relative risk ratio was high, but none were statistically significant.

Table 3 presents the distribution of environmental and socioeconomic characteristics by malaria positive, negative and total household. Table 4 lists the adjusted odds ratios for malaria based on the distance from each participating household to various locations, including forest, and water sources. A binary variable with 3 km as the cut-off point was created because most mosquitoes cannot fly more than 3 km from their breeding places [14]. Results reveal that people living in houses less than 3 km from the forest were at much higher risk for malaria than people living further away. The strong effect of distance from house to forest remained significant after controlling for a number of potentially confounding variables. People living in houses more than 3 km from the water sources were at much higher risk of malaria than people living within 3 km. After controlling for confounding by other variables, the effect remained significant for the distance from house to water sources. Children had a significantly higher risk for malaria than adults. Independent risk factors for malaria infection found significant in multivariate analysis for the entire surveyed area were proximity to forest, precarious house (house made with temporary construction materials like straw, polythene, bamboo etc), and bed net with <3 in house. Only proximity to water came out as an independent and significant protective factor for malaria infection.

Discussion

Malaria epidemiology was never studied in the study area before. The prevalence study showed a high prevalence rate. This is also the first data set and can be useful for target interventions for control programme. Malaria is pri-

Table 2: Spatial malaria clusters in Khagrachari district detected by SaTScan v7.0.3

Cluster	Population	No. of Cases	Expected Cases	Relative Risk	Log Likelihood Ratio	P-Value
Most likely cluster						
	85	35	13.15	3.381	19.066555	0.0002
Secondary clusters						
	73	24	11.29	2.419	7.742381	0.0824
	3	3	0.46	6.611	5.632573	0.8629
	3	3	0.46	6.611	5.632573	0.8629
	5	4	0.77	5.321	5.185802	0.9100

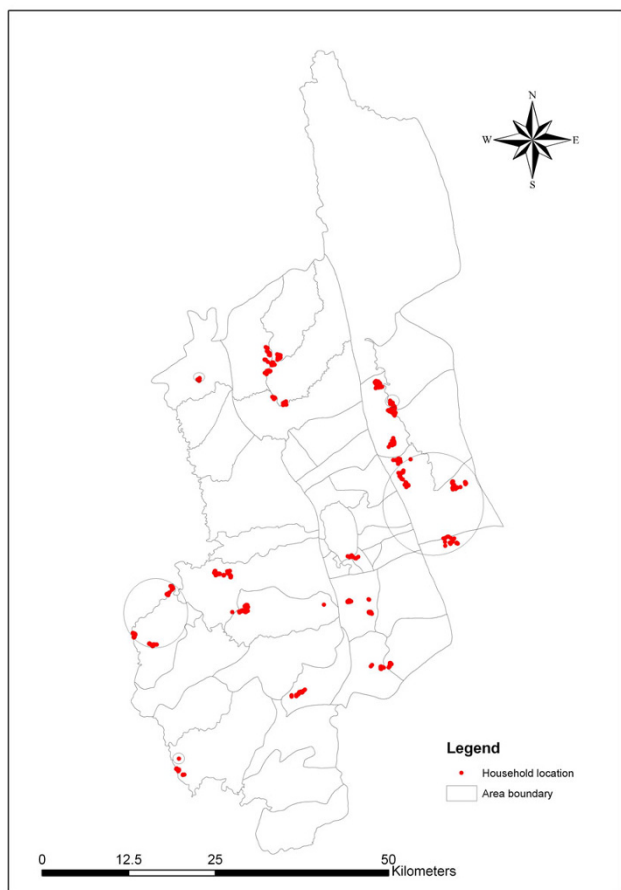


Figure 2
Distribution of malaria clusters in Khagrachari.

marily clustered in Dighinala, which shares a common border with India and Myanmar, and has hilly reserve forests and water bodies. This results originated from the cross-sectional study. Malaria clusters may differ because of seasonal variation. The result is very important because there are several malaria clusters even in a high endemic area. Government and BRAC who is implementing the national malaria control programme should update passive surveillance data and detect malaria cluster in regular basis for target intervention. That will provide an opportunity of optimum use of limited resources for the national malaria control programme.

Individual and household level risk factors were investigated. Logistic regression was used to examine the effects of distance to forest and water bodies, housing status, bed net use and age. Consistent with other studies proximity to forest was found to be a risk factor for malaria in the study region [15]. In contrast to common findings the proximity of household to water bodies was found to be protective against malaria. These unusual findings were discussed with international malaria experts and they were not surprised by the findings noting that such findings have occurred in other locations. One explanation offered was that people living closer to breeding sites are more aware of malaria and thus take more precautionary measures than others.

Housing status has been shown to be an important risk factor of malaria. In Burkina Faso, *P. falciparum* prevalence was two times higher for those living in mud-roofed houses compared to those living in iron-sheet roofed houses compared [16]. A similar study in Sri Lanka showed a strong significant relationship with poorer

Table 3: Distribution of environmental and socioeconomic characteristics by malaria positive, negative and total household (HH)

	Malaria Positive household N = 116		Malaria Negative household N = 634		Total household N = 750	
	%	95% CI	%	95% CI	%	95% CI
Forest within 3 km	37.9	29.146.8	29.5	26.033.1	30.8	27.534.1
Water within 3 km	55.2	46.164.2	72.4	68.975.9	69.7	66.473.0
Precarious house	46.6	37.555.6	28.5	25.032.0	31.3	28.034.7
HH with less than 3 bed nets	62.9	54.171.7	46.1	42.249.9	48.7	45.152.3
Having cattle or small animal [§]	95.7	91.999.3	92.4	90.494.5	92.9	91.194.8
HH with more than 5 family members	41.4	32.450.3	33.6	29.937.3	34.8	31.438.2
Illiterate household head	50.0	41.059.1	45.6	41.749.5	46.3	42.749.8
Deficient HH	62.1	53.271.0	50.8	46.954.7	52.5	48.956.1

[§]Chickens, ducks, goats

housing construction and the presence of indoor-resting mosquitoes [17]. In this study, precarious housing was associated with malaria risk. Additionally, significant risk was associated with those in households possessing less than three bed nets, which is widely supported in the literature [2,18]. Unsurprisingly children in the Khagrachari district are at significantly greater risk of contracting malaria.

This study also suggests the target interventions in the high risk areas that can help significantly to control malaria. Through the map it is possible to determine which areas require the greatest control effort. The maps presented in this paper are the first step to understanding malaria in hilly Khagrachari from a micro-geographic perspective.

Table 4: Risk factors for malaria in Khagrachari, Bangladesh

	Crude OR	(95% CI)	Adjusted OR	(95% CI)	P-value
Distance to forest					
- <= 3 km	1.50	(1.002.21)	2.23	(1.373.60)	0.001
- >3 km	1.00		1.00		
Distance to water					
- ≤3 km	0.47	(0.310.70)	0.50	(0.310.80)	0.004
- > 3 km	1.00		1.00		
Housing status					
- Precarious	2.18	(1.503.30)	1.66	(1.042.64)	0.034
- Non-precarious	1.00		1.00		
Bed net in house					
- <3 bed net	2.00	(1.303.00)	1.70	(1.102.72)	0.028
- ≥3 bed net	1.00		1.00		
Age					
- ≤17 years	4.27	(2.836.45)	4.14	(2.716.32)	<0.0001
- > 17 years	1.00		1.00		

Conclusion

Understanding the spatial distribution of malaria, identifying geographic risk factors and the population at risk are important steps toward effective control of malaria. The data presented in this paper are the first step to understanding malaria in south-eastern Bangladesh from a micro-geographic perspective. The study result suggests that there are 'malaria hot-spots' in the study area. The government of Bangladesh and non-governmental organizations involved in malaria control should consider these results when planning malaria control measures. More efforts should be focused on people living in remote areas. BRAC the largest NGO in Bangladesh is currently implementing malaria control programme in Bangladesh. They have deployed health workers in grass root level. They have supplied ITN (Insecticide treated net) in every household. They should consider this result to control malaria and investigate the reasons of cluster.

They should be provided with more bed nets and anti-malarial drugs. One way to accomplish this would be to redistribute health workers to remote regions. The government should also consider allocating additional resources so that more operational research can be carried out in the micro-geographic area. In particular, malaria maps should be updated on a regular basis as new data become available.

Competing interests

The authors declare that they have no competing interests.

Authors' contributions

UH designed, analysed and prepared the manuscript, AH collected data, MH analysed the data, RH and SMA were responsible for study design and conduct the study.

Acknowledgements

This research study was funded by BRAC. ICDDR,B acknowledges with gratitude the commitment of BRAC to the Centre's research efforts.

We are grateful for the technical assistance provided by the ESRI group (USA) and Martin Kulldorff, associate professor, Harvard University. We are thankful to Mahbubur Rahman for his assistance in constructing the GIS database and to all of the field staff who collected the data. We would also like to acknowledge the contributions of Rezwana Haque, an undergraduate student of Harvard University and Beth Yakes, a PhD student of UC Davis for editing the initial version of this manuscript.

References

- Bangali AM, Mahmood AH, Rahman M: **The malaria situation in Bangladesh.** *Mekong Malaria Forum* 2000, **6**:16-23.
- Erhart A, Thang ND, Van Ky P, Tinh TT, Van OC, Speybroeck N, Obsomer V, Hung LX, Thuan LK, Coosemans M, D'alejandro U: **Epidemiology of forest malaria in central Vietnam: a large scale cross-sectional survey.** *Malar J* 2005, **4**:58.
- Bautista CT, Chan AST, Ryan JR, Calampa C, Roper MH, Hightower AW, Magill AJ: **Epidemiology and spatial analysis of malaria in the northern Peruvian Amazon.** *Am J Trop Med Hyg* 2006, **75**:216-222.
- Elnaiem AD, Schorscher J, Bendall A, Obsomer V, Osman ME, Mekkawi AM, Connor JS, Ashford RW, Thomson CM: **Risk mapping of visceral leishmaniasis: The role of local variation in rainfall and altitude on the presence and incidence of Kala-Azar in Eastern Sudan.** *Am J Trop Med Hyg* 2003, **68**:10-17.
- Brooker S, Leslie T, Kolaczinski K, Mohsen E, Mehboob N, Saleheen S, Khudonazarov J, Freeman T, Clements A, Rowland M, Kolaczinski J: **Spatial epidemiology of Plasmodium vivax, Afghanistan.** *Emerg Infect Dis* 2006, **12**:1600-1602.
- Hoek WVVD, Konradsen F, Amerasinghe PH, Perera D, Piyaratne MKFP: **Towards a risk map of malaria for Sri Lanka: the importance of house location relative to vector breeding sites.** *Int J of Epidemiol* 2003, **32**:280-285.
- Odoi A, Martin SVV, Michel P, Middleton D, Holt J, Wilson J: **Investigation of clusters of giardiasis using GIS and a spatial scan statistic.** *Int J of Health Geogr* 2004, **3**:11.
- Kleinschmidt I, Bagayoko M, Clarke GPY, Craig M, Sueur DL: **A Spatial statistical approach to malaria mapping.** *Int J of Epidemiol* 2000, **29**:355-361.
- Khan AH, Musa AKM, Islam T, Sikder AR, Ara FN, Ahmed F, Haque Z, Ahmed M, Farid AKM, Nowsherwa Md, Bhowmick TK, Haque M, Majibullah M, Rahman L, Khan SL: **Bangladesh population census.** *Bangladesh Bureau of Statistics* 2001.
- Singh N, Saxena A, Sharma VP: **Usefulness of an inexpensive, Paracheck test in detecting asymptomatic infectious reservoir of Plasmodium falciparum during dry season in an inaccessible terrain in central India.** *J Infect* 2002, **45**:165-8.
- Moody A: **Rapid diagnostic tests for malaria parasites.** *Clin Microbiol Rev* 2002, **15**:66-78.
- World Health Organization: *The use of malaria rapid diagnostic tests* WHO, Geneva; 2004.
- Meena M, Joshi D, Sridhar S, Waghdhare S, Gangane N, Kalantri SP: **Accuracy of a multispecies rapid diagnostic test kit for detection of malarial parasite at the point of care in a low endemicity region.** *Trans R Soc Trop Med Hyg* 2009.
- Dysoley L, Kaneko A, Eto H, Mita T, D Socheat D, Borkman A, Kobayakawa T: **Changing patterns of forest malaria among the mobile adult male population in Chumkiri District, Cambodia.** *Acta Trop* 2008:207-212.
- Brooker S, Clarke S, Njagi JK, Polack S, Mugo B, Estambale B, Muchiri E, Magnussen P, Cox J: **Spatial clustering of malaria and associated risk factors during an epidemic in a highland area of western Kenya.** *Trop Med Int Health* 2004, **9**:757-766.
- Yé Y, Hoshen M, Louis V, Séraphin S, Traoré I, Sauerborn R: **Housing conditions and Plasmodium falciparum infection: protective effect of iron-sheet roofed houses.** *Malar J* 2006, **5**:8.
- Konradsen F, Amerasinghe P, Hoek WVVD, Amerasinghe F, Perera D, Piyaratne M: **Strong association between house characteristics and malaria vectors in Sri Lanka.** *Am J Trop Med Hyg* 2003, **68**:177-181.
- Crowe S: **Malaria outbreak hits refugees in Tanzania.** *Lancet* 1997, **350**:41.

Publish with **BioMed Central** and every scientist can read your work free of charge

"BioMed Central will be the most significant development for disseminating the results of biomedical research in our lifetime."

Sir Paul Nurse, Cancer Research UK

Your research papers will be:

- available free of charge to the entire biomedical community
- peer reviewed and published immediately upon acceptance
- cited in PubMed and archived on PubMed Central
- yours — you keep the copyright

Submit your manuscript here:
http://www.biomedcentral.com/info/publishing_adv.asp

