

RESEARCH

Open Access

Malaria epidemiology in Lihir Island, Papua New Guinea

Oriol Mitjà^{1,2*}, Raymond Paru¹, Billy Selve⁴, Inoni Betuela³, Peter Siba³, Elisa De Lazzari² and Quique Bassat²

Abstract

Background: *Plasmodium vivax* and *Plasmodium falciparum* malaria remain highly endemic in the Pacific Islands including Lihir Island, Papua New Guinea. Lihir Gold Limited is conducting mining activities and funded an integrated vector control intervention within the villages surrounding the mine. The aim of this study was to assess the impact of such programme by comparing the epidemiological trends of malaria in different parts of the island.

Methods: Two cross-sectional surveys were conducted before and after the intervention (2006–2010) to determine malaria prevalence in mine-impact (MI) and non-MI areas. Incidence of malaria was estimated for the Lihir Medical Centre catchment area using island population denominators and a health-centre passive case detection ongoing from 2006–2011.

Results: A total of 2,264 and 1,653 children < 15 were surveyed in the cross-sectional studies. The prevalence of any malaria parasitaemia initially was 31.5% in MI areas and, 34.9% in non-MI (POR 1.17; 95 CI 0.97 – 1.39). After four years there was a significant reduction in prevalence in the MI areas (5.8%; POR 0.13, 95 CI 0.09–0.20), but reduction was less marked in non-MI areas (26.9%; POR 0.69, 95 CI 0.58–0.81).

28,747 patients were included in the evaluation of incidence trends and overall malaria in local Lihirian population in MI areas declined over time, while it remained at similar high levels among migrants. The age-incidence analysis showed that for each higher age range the malaria incidence declines compared to that of the previous stratum.

Conclusions: There was a substantial reduction in prevalence and incidence rates of both *P. vivax* and *P. falciparum* in the mining area following implementation of a malaria control intervention, which was not seen in the area outside the mining activities.

Keywords: Malaria, Epidemiology, Prevalence, Vector control

Background

The burden of malaria in Papua New Guinea (PNG) is among the highest in Asia and the Pacific region [1,2], and in some areas of the country disease transmission reaches holoendemic levels rarely found outside sub-Saharan Africa. However, the results of a recent country-wide survey, conducted by the PNG Institute of Medical Research (PNGIMR) in 2011, indicate a major reduction in malaria prevalence in all age groups compared to the previous survey [3] as a result of the Global Fund-supported National Malaria Control Programme [4,5]. On average, 6.8% of all

surveyed individuals and 7% of all children under the age of five years were infected with malaria parasites as compared to 18% and 24% respectively, in 2008 [6].

The epidemiology of malaria in islands often varies from what occurs in the mainland. Little published data on malaria epidemiology exist for Lihir Island (New Ireland Province), with an extension of 300 square kilometres, and a population of 23,000 inhabitants, and where malaria seems to remain a major public health problem. A general baseline health survey report carried out in 1991 by Bentley *et al.* (unpublished observations) concluded that six of the nine villages surveyed were hyperendemic, and the other three villages were mesoendemic.

Lihir Gold Limited (LGL; Newcrest Mining Ltd), a mining company in Papua New Guinea, recognizes that malaria is a major issue affecting employee health as well

* Correspondence: oriolmitja@hotmail.com

¹Department of Medicine, Lihir Medical Center, PO Box 34, Lihir Island, NIP, Papua New Guinea

²Barcelona Centre for International Health Research, Hospital Clinic, University of Barcelona, Barcelona, Spain

Full list of author information is available at the end of the article

as the health of communities in areas surrounding their operations in malaria-endemic areas. Therefore, the company is committed to delivering comprehensive and effective management and control of malaria in its sites. Under this premise, the Island's Public Health Department, planned a malaria control programme specifically targeted at the mine impacted area. This study describes the basic epidemiological data regarding *P. falciparum* and *P. vivax* infections, in a coastal area in the northern islands of Papua New Guinea, used for monitoring and evaluating malaria interventions in a mining area.

Methods

Study setting and patients

The study was conducted in the main island of the Lihir Group, in the Bismarck Archipelago, 900 km northeast of Port Moresby in the New Ireland Province of Papua New Guinea (PNG). The Lihir islands are geographically remote and host PNG's largest gold mine since 1995. Mining operations have led to an important increase in the population of the island from 9,900 in 1995 to a population of 21,800 in 2011 of which 6,600 are migrants, and does not include the current mining workforce of 3,500 people (Nick Bainton, Lihir Social impact monitoring programme, personal communication). In the past five years there has been a steep rise in the number of non-Lihirian population, which has increased by 65%. Migrants make their way to Lihir in search of economic opportunities.

The study areas are in a wet tropical forest zone where the mean annual rainfall is about 4,000 mm per annum. There are a large number of streams on the Island, many of which have relatively small catchments with variable flows resulting in fast flowing torrents during heavy rainfall periods and almost no flow during extended dry periods. A drought might cause pooling in rivers and hence create conditions suitable for the breeding of *Anopheles* mosquitoes. The dry season is mainly concentrated between the months of October to December, with the rest of the year being very rainy.

Vector control intervention

The vectors of malaria in New Ireland Province belong to the *Anopheles farauti* and *Anopheles punctulatus* complex of mosquitoes [7,8]. An integrated vector control strategy was put in place in the northern section of Lihir Island in a number of villages between Zuen and Put-put2 affected by mining activities (Figure 1). The programme is based around quantitative monitoring of vectors and interventions include long-term measures targeting adult mosquitoes and mosquito breeding source reduction. Indoor and outdoor residual spraying takes place bi-annually with good coverage of all houses in the mine-impact (MI) area. Distribution of bed nets

to all households was implemented in 2004 and again in 2010. Finally, vector breeding site reduction is undertaken once a week around the MI areas; when anophelines are present the area is drained, filled or treated with *Bacillus thuringiensis israelensis*.

Procedures and data collection

The study involved both active and passive case detection methods for data collection. Two cross-sectional surveys were carried out, in 2006 and in 2010 and the incidence of malaria was measured from January 2006 to December 2011 in the MI area. The annual demographic census of the LGL Social impact monitoring (SIM) report was used to estimate population denominators and incidence rates. Population denominators are well established and updated on continuing basis through quarterly reporting process from village information officers.

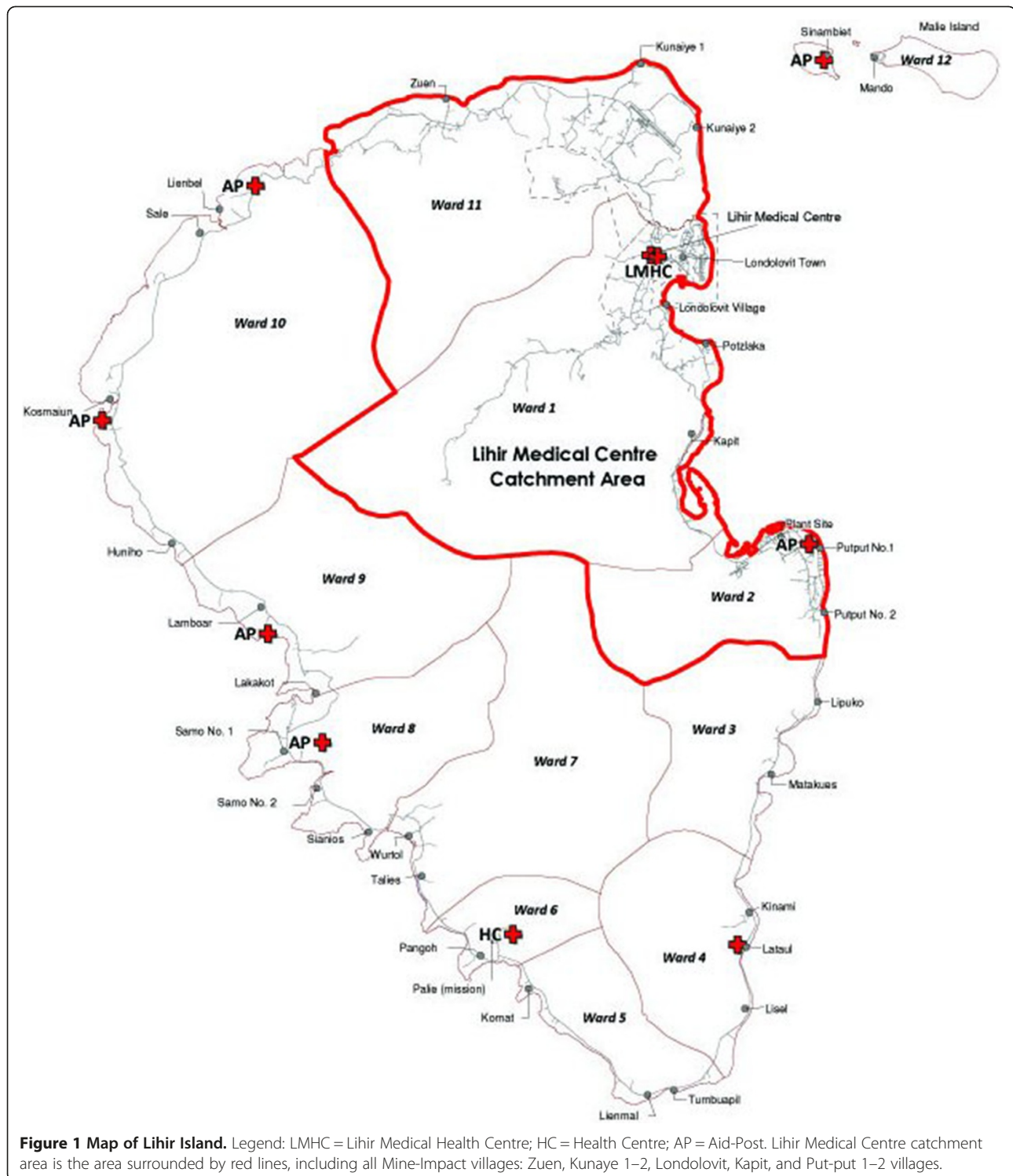
Active case detection

An island-wide cross-sectional survey with the aim to estimate the community prevalence of malaria parasitaemia in children < 15 years was conducted in January 2006, covering 19 villages as part of a large Mass Drug Administration intervention for filariasis. In January 2010, a second cross-sectional survey in children < 15 years was undertaken covering the same 19 villages. Data were collected by trained field worker teams, which included at least one registered nursing officer for sample collection procedures.

Blood collection was performed by finger-prick. One thick and one thin blood smears were prepared for each survey participant. Thick blood films were examined by light microscopy at Lihir Medical Centre's microscopy section. Slides were read by WHO-certified microscopists following established standard operating procedures. A slide was recorded as negative when 200 fields of the thick film were read and no parasite was seen. Parasite species in positive films were identified on thin films and gametocyte stages were recorded separately. No molecular techniques were used to complement microscopy. All individuals found to be unwell or parasitaemic during the survey were referred to a study clinician and treated according to PNG National guidelines.

Passive case detection

A passive case detection system was used, an administrative database which contains outpatient records of malaria detection at Lihir Medical Centre (LMC). Outpatients visited at LMC from January 2006 through December 2011 were eligible for this study. Patients that resided outside the MI-area (LMC catchment area) (Figure 1) were excluded.



Clinical malaria episodes were defined as a fever (i.e. axillary temperature $\geq 37.5^{\circ}\text{C}$) or history of fever during the preceding 48 hours in the presence of a light microscopically detectable parasitaemia of any *Plasmodium* species and density. Minimum hospital-based incidence rates (MHBIRs) were calculated as the yearly number of malaria

cases visited at the outpatient clinic in patients resident in the study area divided by the total individuals' years at risk (IYAR) for that age group and year. Case-patients were classified as Lihirians or migrants, the latter including all non-Lihirians, both permanent residents and workers living temporarily in and out, in camp accommodation.

All positive malaria cases were treated with appropriate anti-malarial treatment according to the recommendation of the National Malaria Treatment Protocol. Anti-malarial efficacy studies undertaken throughout the 1980s and 1990s in PNG clearly showed the decreasing efficacy of chloroquine (CQ) for the treatment of malaria [9-11]. As a result, the Department of Health protocols for first-line treatment were changed in 1999 to the combination of CQ + sulphadoxine-pyrimethamine (SP), again in 2005 to artesunate (AS) + sulphadoxine-pyrimethamine (SP) and, finally, in 2009 to the combination of artemether + lumefantrine (AL).

Entomological surveys

Entomological surveys were carried out in the MI communities from 2006 to 2011. Indoor human landing catches of the vector mosquito were conducted from sunset to sunrise (18:30–06:30 h). With the help of an aspirator, mosquitoes were caught when they landed on a human volunteer for taking a blood meal. This method was approved by local Ethics Committees. The entomologic inoculation rate (EIR) was calculated as the product of the proportion of Anopheles positive by microscopy also termed as sporozoite rate (SR) and the Human Biting Rate, which is estimated as the geometric mean of Anopheles caught per man per month.

Rainfall data

The monthly rainfall data for four different meteorological stations from January 2006 to December 2011 were obtained from the LGL Mining department of environment at Lihir. An island-wide rainfall index was constructed based on the records averaged over the four geographically-dispersed stations and diagnostics were reported.

Statistical analysis

Summary statistics were constructed on the basis of the frequencies and proportions of categorical variables and on the basis of the mean and standard deviation and median and interquartile range (IQR) values of continuous variables. Pearson's chi-squared test was used to analyse contingency tables, *t*-test for comparing normally distributed quantitative characteristics between groups and, Mann-Whitney *U* test for non-normally distributed quantitative variables. Poisson regression models with robust standard errors were used to estimate the incidence rate ratio (IRR) of malaria outcomes for age ranges and for calendar year. The prevalence odds ratio (POR) for comparing prevalence between groups and between surveys (2010 vs 2006) was estimated with a logistic regression model without and with robust standard errors, respectively. Data were entered into Access

databases, and Stata version 12.1 (StataCorp) was used for statistical analysis.

Ethical approval

Ethical approval to conduct the study was granted by the Lihir Sub-district Health Ethics Committee. Community entry involved explaining the study to key community opinion leaders followed by community meetings. At these meetings, the study's aims, objectives, risk and benefits were explained to all participants.

Results

Active case detection

In the 2006 study, a total of 2,264 children were surveyed for malaria parasitaemia. Overall, a total of 760 (33.6% 95 CI 31.7 – 35.5) of all blood slides were found positive. Species distribution included a majority of *P. vivax* (57.0%; 95 CI 53.4 – 60.5) followed by *P. falciparum* infections (40.4%; 95 CI 37.0 – 43.9). *Plasmodium malariae* was less common (2.6%; 95 CI 1.7 – 4.0) and no *Plasmodium ovale* infections were detected in the survey. Malaria parasites were found in 34.9% (95 CI 32.4 – 37.4) of blood slides in the non-MI area and 31.5% (95 CI 28.5 – 34.6) in the MI area (POR 1.17; 95 CI 0.97 – 1.39) (Table 1).

In the 2010 study, a total of 1,653 children from elementary schools were surveyed. Malaria parasites were found in 329 (19.9%, 95 CI 18.1 – 21.9) of all blood slides. Malaria prevalence varied between geographical regions with the highest prevalence found in non-MI villages. (Figure 2) Regional differences for malaria were found to be statistically significant between non-MI and MI areas (26.9 vs. 5.8%, POR 5.99; 95 CI 4.09 – 8.77). Compared to 2006 there was a significant reduction in prevalence in the MI areas (POR 0.13; 95 CI 0.09 – 0.20, $P < 0.001$) and a less marked reduction in non-MI areas (POR 0.69; CI 0.58 – 0.81, $P = 0.012$).

Patient characteristics by passive case detection

From January 2006 to December 2011 a total of 45,594 (mean per annum [SD] 7,599 [1083]) confirmed malaria cases were diagnosed at Lihir Medical Centre (LMC). Of these 45,594 outpatients, 16,847 (37%) patients resided in villages outside the LMC catchment area who either decided to come to the LCM in the first instance, or were referred from a peripheral aid-post or health centre.

The remaining 28,747 patients were included in the study for incidence trends analysis. Table 2 summarizes

Table 1 Prevalence of malaria in children in 19 villages of Lihir Island

	MI area (%)	Non-MI area (%)	POR (95% CI)	p-value
2006	31.5	34.9	1.17 (0.97; 1.39)	0.0931
2010	5.8	26.9	5.99 (4.09; 8.77)	<0.0001

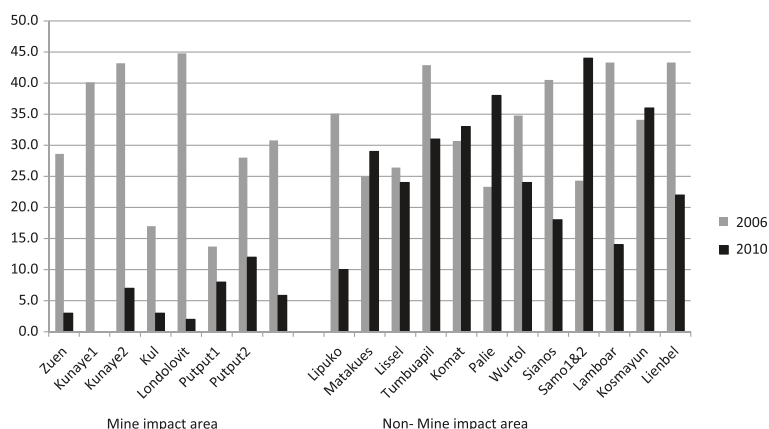


Figure 2 Malaria prevalence in 19 villages of Lihir Island. Legend: Results of two cross-sectional surveys in children <15 years. Bars are prevalence of children with malaria parasitemia in every village.

patient demographic characteristics, clinical severity, and outcomes. Overall, the distribution of male (52.5%, CI 51.9 – 53.0) and female was similar, and the median age of all patients with malaria infection was 20 years (interquartile range [IQR], 5 – 33 years). The median age of patients with *P. vivax* infection was much lower than that of patients with *P. falciparum* (10.0 vs. 22.0 years of age, $P < 0.001$). A majority of patients were migrants (15,040; 52.3%) as opposed to Lihirians (13,707; 47.7%).

Temporal trends in malaria infection in Lihirians and migrants

The incidence of malaria infection, *P. falciparum* and *P. vivax* varies significantly over time in all groups (total population, Lihirians, migrants) (Table 3). In the total population and Lihirians, the general trend showed a decline in the incidence over time, but in 2008 compared to 2007 the decline slowed down or converted in an increment, and in 2009 compared to 2008 the incidence was significantly higher. In migrants, *P. falciparum* incidence was almost the same until 2009, in 2010 was significantly higher than 2009 and then in 2011 diminished

significantly. *Plasmodium vivax* incidence decreased in 2007 but then increased in 2008 and 2009 and reached a plateau (2010 and 2011).

Malaria species and age trends in burden of disease

Of the total number of malaria parasitologically-confirmed diagnoses in LMC, 70.8% were positive for *P. falciparum*, 27.0% for *P. vivax*, 2.3% for *P. malariae* and 3.2% were diagnosed of mixed infections. *Plasmodium falciparum* asexual stage parasitaemia was much more frequent in sick subjects seen in the health centre than in healthy members of the community when assessed through the cross-sectional surveys in malaria peak season (70.7% vs. 40.4% [OR 3.6; 95 CI 3.26– 3.88, $P < 0.001$]).

The incidence of malaria infection, *P. falciparum* and *P. vivax* varies significantly over age ranges (Table 4). For each higher age range the incidence declines compared to that of the previous stratum, except for the last one (≥ 20 years) for which it is higher. For 5–9 years compared to <4 years, the incidence decrease in *P. vivax* is significantly higher than in *P. falciparum*, IRR 0.62 (95% CI 0.58; 0.67) p -value = < 0.0001.

Table 2 Characteristics of patients with Malaria infection in the mine-impact area during the study period, 2006 – 2011

Characteristic	<i>P. falciparum</i> infection (n = 20,302)	<i>P. vivax</i> infection (n = 7,808)	All malaria infections (n = 28,747)
Age, median years (IQR)	22.0 (6.0 – 34.0)	10.0 (3.0 – 30.0)	20.0 (5.0 – 33.0)
Children under 5 years of age, %	18.4% (17.8 – 18.9)	32.6% (31.6 – 33.6)	21.7% (21.3 – 22.2)
Male sex	51.9% (51.2 – 52.6)	53.7% (52.6 – 54.8)	52.5% (51.9 – 53.0)
Origin			
Lihirian	46.9% (46.2 – 47.5)	50.3% (49.1 – 51.4)	47.7% (47.1 – 48.3)
Migrant	53.1% (52.5 – 53.8)	49.7% (48.6 – 50.8)	52.3% (51.7 – 52.9)
Severity and outcome			
Malaria admissions, n (%)	406 (2.0%; 1.8 – 2.2)	23 (0.3%; 0.2 – 0.5)	429 (1.5%; 1.4 – 1.7)
Died in hospital, n (%)	13 (0.06%; 0.03 – 0.10)	none	13 (0.04%; 0.02 – 0.07)

Legend. Data are % (95 CI) of patients, unless otherwise indicated. IQR, interquartile range.

Table 3 Incidence of malaria infection is presented yearly for the total population, Lihirians and migrants

		2006	2007	2008	2009	2010	2011	p-value
All - total population		n = 7094	n = 7598	n = 8606	n = 10508	n = 10581	n = 10709	
Malaria infection	Incidence	601	494	505	570	542	437	< 0.001
	IRR		0.82	1.02	1.13	0.95	0.81	
Lihirians		n = 3594	n = 3660	n = 3768	n = 3905	n = 3980	n = 4059	
Malaria infection	Incidence	723	568	587	740	548	430	< 0.001
	IRR		0.79	1.03	1.26	0.74	0.79	
Migrants		n = 3500	n = 3938	n = 4838	n = 6603	n = 6601	n = 6650	
Malaria infection	Incidence	476	425	441	469	538	442	< 0.001
	IRR		0.89	1.04	1.06	1.15	0.82	

Legend. Incidence was only calculated for the mine-impact area. Incidence is estimated as Minimum community-based incidence rates of all microscopically confirmed malaria infections. The Incidence Rate Ratio (IRR) compares the incidences of two consecutive years.

Seasonality and rainfall

Significant seasonality could be observed for *P. falciparum* clinical cases, increasing from January to May and decreasing thereafter. The annual peak of clinical *P. vivax* cases in this period was apparent but less marked. Malaria transmission was highest following the dry season, usually occurring at the end of the year (October - December). Upsurges in malaria transmission were seen with a time lag of one or two months. The average rainfall in the months of October to December was lower (mean [SD] 260.4 [125,8] mm) than the remaining months of the year (mean [SD] 345.7 [149.2] mm per month). The relationship between rainfall and malaria over the time is illustrated in Figure 3.

Mosquito abundance and man biting rates (MBRs)

A total of 10,061 mosquitoes were captured during the different surveys occurring from 2006 to 2011 in the MI areas, with about a fifth of the mosquitoes belonging to the *Anopheles* species (19.3%; n = 2,323). Non-*Anopheles* species accounted for the remaining 80.7% (n = 9,732), with a predominance of *Culex* and *Aedes* species. EIRs for *Anopheles farauti* were generally low in the MI areas; the median EIR was 1 ib/p/month (IQR 0 – 3 ib/p/month). The highest was recorded in June 2006 and January 2009 (Figure 3).

Discussion

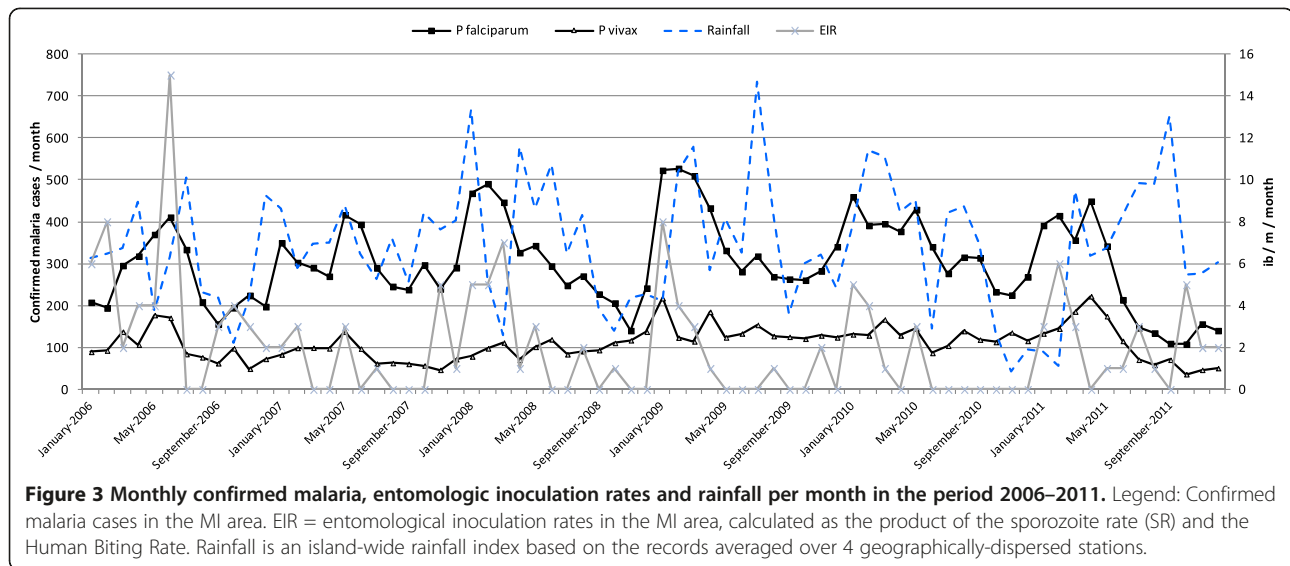
The study assessed the epidemiology of malaria in a tropical forest area of the New Guinea Islands, PNG, covering villages within a mining area where malaria control interventions have been specifically introduced, and villages outside. Parasite prevalence data was used as the main indicator for transmission reduction. The main findings of this study include the confirmation of a major decrease by 80% in malaria prevalence in the mining area in 2010 compared to the previous survey in 2006. This study has also highlighted the difference in prevalence in villages within the MI areas (6%) compared to those in non-MI areas (27%). There are a number of reasons this may be the case including vector control activities, a better socio-economic profile, better screening or higher use of repellents or easier access to quality care and treatment and to anti-malarial drugs which are more effective in the elimination of the transmissible stage of malaria – gametocytes- than previous drugs used.

When only looking at non-MI areas changes in prevalence of malaria parasitaemia are not substantial. In non-MI villages the prevalence of malaria parasitaemia remained surprisingly high (27%) even when compared to reports of other similar rural parts of the country (6.2% in PNG Islands in 2010) [3]. The reduction in malaria prevalence in other areas of PNG coincided with a major increase in the coverage with long-lasting insecticide treated

Table 4 Incidence of malaria infection stratified for age range

		≤4 yrs n = 538	5-9 yrs n = 571	10-14 yrs n = 513	15-19 yrs n = 402	≥20 yrs n = 1789	p-value
Malaria infection	Incidence	1,264	897	441	317	407	< 0.001
	IRR (95% CI)		0.71 (0.47; 1.07)	0.49 (0.47; 0.51)	0.72 (0.67; 0.77)	1.29 (1.21; 1.37)	
<i>P. falciparum</i>	Incidence	754	622	332	242	308	< 0.001
	IRR (95% CI)		0.83 (0.80; 0.85)	0.53 (0.50; 0.56)	0.73 (0.67; 0.79)	1.27 (1.18; 1.37)	
<i>P. vivax</i>	Incidence	514	262	96	64	88	< 0.001
	IRR (95% CI)		0.51 (0.48; 0.55)	0.37 (0.32; 0.41)	0.67 (0.56; 0.81)	1.37 (1.17; 1.62)	

Legend The Incidence Rate Ratio (IRR) compares the incidence of a two consecutive age ranges.



nets (LLIN) [12]. In Lihir villages, despite the successful distribution of bed nets by the Department of Health in association with Rotarians Against Malaria (36 – 89% of households with at least one bed net) [13], a recent survey by Bentley *et al.* in 2010 showed that the greatest majority of people were not using them for malaria control (unpublished observations).

Incidence (as minimal hospital-based incidence rates) was only calculated for the mining area. The study showed that incidence of malaria in migrant populations, unlike in local populations, has increased in recent years. The poorer living conditions of most migrants (including houses made of bush material, location near swampy areas, and lack of means to buy mosquito nets) put them at continued risk of infection compared to other inhabitants in MI areas [14], but also a migrant infected with malaria can serve as a reservoir becoming an “active transmitter”, thereby enabling the spread of malaria again. The places of origin of migrants are diverse while some are from low transmission sites [15], others are from provinces with historically high rates of malaria [16]. This might indicate that the Island sees a significant arrival of parasites from infected individuals (imported malaria, from highly endemic areas) but also the arrival of individuals with high vulnerability (from low transmission areas) [17,18].

Age-dependent patterns of disease have been observed in this study for *P. vivax* and *P. falciparum* infections. In both cases, the incidence of clinical episodes decreased significantly with age throughout the entire age range until the age of 20 years. However, the peak burden of *P. vivax* infection and illness was concentrated in the younger 0–4 years group, while in *P. falciparum* peak levels remained high until the 10 years of age. Similar results have been reported in other highly endemic areas

in PNG where the risk of symptomatic *P. vivax* infection has been found highest among children less than five years of age [19,20]. Under natural, lifelong exposure, immunity to *P. vivax* is acquired more quickly than immunity to *P. falciparum*. With increasing immunity the duration and severity of fevers associated with *P. vivax* infection tend to decrease rapidly, in particular for recurrences with the same strain [19].

There are few longitudinal malaria entomology studies carried out in mining communities in PNG and other parts of the world. Entomologically, only a few malaria vectors can be found on the island of Lihir including *An. punctulatus* found in small numbers relative to *An. farauti sp.*, which often breeds in coastal, brackish water [21]. Surveillance conducted along the duration of this study, confirmed the positive impact of vector control on malaria transmission parameters in the MI areas. The EIRs between 2006 – 2010 in the MI area calculated in this survey were relatively low (<1 ib/p/month) as compared to data from the survey by Ebsworth *et al.* in 2001, who estimated EIRs around 10 ib/b/month [21]. The highest EIRs in the MI area were recorded in months that experienced low-moderate rainfall. Low rainfall creates pockets of water, which favours breeding of larvae unlike torrential rains which washes away larval breeding sites of the major malaria vectors in PNG. The association between rainfall patterns and malaria transmission has previously been investigated thoroughly [22,23] and shown once again in this study.

This study has the limitations of a cross-sectional survey; the study captures one moment in time and can hence not consider weather pattern related changes in parasite prevalence. Also, parasite density to determine the expected average decrease as a surrogate marker of the reduction in transmission was not documented.

However, both cross-sectional surveys were carried out in the same season. In addition, complementary evidence was provided from incidence measurements and entomological studies suggesting that the results from this survey are indeed a reflection of real and significant changes in the malaria epidemiology. While public-health malaria control oriented activities started by the mining company have resulted in a significant decrease of malaria prevalence in the areas where they have been performed, not much impact has been observed outside these areas. Interestingly, reductions in the malaria burden witnessed by other parts of the country as a result of the scale-up of malaria control interventions have not yet reached Lihir Island, where malaria still represents one of the major public health challenges for the health of its inhabitants.

Competing interests

The authors declare that they have no competing interests.

Authors' contributions

OM conceived the study, supervised data collection and wrote the manuscript. RP and BS led the data collection and participated in data analysis. IB, PS helped to draft the manuscript. EL performed the statistical analysis. QB conceived and designed the study and revised the manuscript. All authors read and approved the final manuscript.

Acknowledgements

We thank all the community members who participated in our surveys and the community leaders and health authorities who facilitated the field work. Our sincere thanks go to the field data collectors and the clinical and laboratory personnel of the Lihir medical Centre. This study was supported by the International SOS (Australasia) and Lihir Gold Limited, Newcrest Mining Ltd.

Author details

¹Department of Medicine, Lihir Medical Center, PO Box 34, Lihir Island, NIP, Papua New Guinea. ²Barcelona Centre for International Health Research, Hospital Clinic, University of Barcelona, Barcelona, Spain. ³PNG Institute of Medical Research, Goroka, Papua New Guinea. ⁴Sustainable Development Department, Newcrest Mining Ltd, Lihir Island, Put put, Papua New Guinea.

Received: 19 September 2012 Accepted: 10 March 2013

Published: 15 March 2013

References

1. Kazuraa J, Sibab P, Betuela I, Mueller I: **Research challenges and gaps in malaria knowledge in Papua New Guinea.** *Acta Trop* 2012, **121**:274–280.
2. Mueller I, Bockarie M, Alpers M, Smith T: **The epidemiology of malaria in Papua New Guinea.** *Trends Parasitol* 2003, **19**:253–259.
3. Hetzel MW, Pulford J, Siba PM, Mueller I: *Summary report on malaria parasite prevalence in Papua New Guinea (2011)*. Goroka: Papua New Guinea Institute of Medical Research; 2011.
4. PNG DoH: *National malaria control programme strategic plan 2009–2013*. Port Moresby: Papua New Guinea Ministry of Health; 2009.
5. The Global Fund: *Community-based malaria prevention and control in Papua New Guinea – nationwide insecticide treated nets (ITN) distribution and expansion of confirmed diagnosis and appropriate treatment of malaria*. Geneva: The Global Fund to Fight AIDS, Tuberculosis and Malaria; 2010.
6. Roll Back Malaria: *World malaria report*. Geneva; 2010. Available from: http://www.who.int/malaria/publications/country-profiles/profile_png_en.pdf.
7. Lee DJ, Hicks MM, Griffiths M, Debenham ML, Bryan JH, Russell RC, Geary M, Marks EN: *The Culicidae of the Australasian region*. Volume 5th edition. Canberra: Australian Government Publishing Service; 1987.
8. Cooper RD, Waterson DGE, Frances SP, Beebe NW, Pluess B, Sweeney AW: **Malaria vectors of Papua New Guinea.** *Int J Parasitol* 2009, **39**:1495–1501.
9. Cattani JA, Tulloch JL, Vrbova H, Jolley D, Gibson FD, Moir JS, Heywood PF, Alpers MP, Stevenson A, Clancy R: **The epidemiology of malaria in a**

- population surrounding Madang, Papua New Guinea. *Am J Trop Med Hyg* 1986, **35**:3–15.
10. Lalloo DG, Trevett J, Paul M, Korinhona A, Laurensen IF, Mapao J, Nwokolo N, Danga-Christian B, Black J, Saweri A, Naraqi S, Warrell DA: **Severe and complicated falciparum malaria in Melanesian adults in Papua New Guinea.** *Am J Trop Med Hyg* 1996, **55**:119–124.
11. Genton B, Baea K, Lorry K, Ginny M, Wines B, Alpers M: **Parasitological and clinical efficacy of standard treatment regimens against *Plasmodium falciparum*, *P. vivax* and *P. malariae* in Papua New Guinea.** *P N G Med J* 2005, **48**:141–150.
12. Hetzel MW, Gideon G, Lote N, Makita L, Siba P, Mueller I: **Ownership and usage of mosquito nets after four years of large-scale free distribution in Papua New Guinea.** *Malar J* 2012, **11**:192.
13. Seddon R: *Disease*. Geneva: Profile CCM Papua New Guinea – Malaria. WHO; 2011.
14. Teklehaimanot A, Mejia P: **Malaria and poverty.** *Ann N Y Acad Sci* 2008, **1136**:32–37.
15. Mueller I, Sie A, Ousari M, Iga J, Yala S, Ivivi R, Reeder JC: **The epidemiology of malaria in the PNG highlands: 5. Aseki, Menyama and Wau-Bulolo, Morobe Province.** *P N G Med J* 2007, **50**:111–122.
16. Crane G, Pryor D: **Malaria and the tropical splenomegaly syndrome in New Guinea, transactions of the tropical splenomegaly syndrome in the Anga of Morobe Province.** *P N G Med J* 1985, **28**:27–34.
17. Prothero RM: **Migration and malaria risk.** *Health, Risk & Society* 2001, **3**:19–38.
18. Rodríguez-Morales AJ, Delgado L, Martínez N, Franco-Paredes C: **Impact of imported malaria on the burden of disease in northeastern Venezuela.** *J Travel Med* 2006, **13**:15–20.
19. Lin E, Kiniboro B, Gray L, Dobbie S, Robinson L, Laumaea A, Schöpflin S, Stanic D, Betuela I, Blood-Zikursh M, Siba P, Felger I, Schofield L, Zimmerman P, Mueller I: **Differential patterns of infection and disease with *P. falciparum* and *P. vivax* in young Papua New Guinean children.** *PLoS One* 2010, **5**:e9047.
20. Michon P, cole-Tobian JL, Dabod E, Choepflin S, Igu J, Susapu M, Tarongka N, Zimmerman PA, Reeder JC, Beeson JG, Schofield L, King CL, Mueller I: **The risk of malarial infections and disease in Papua New Guinean children.** *Am J Trop Med Hyg* 2007, **76**:997–1008.
21. Ebsworth P, Bryan JH, Foley DH: **Ecological distribution of mosquito larvae of the *Anopheles punctulatus* group on Niolam (Lihir) Island, Papua New Guinea.** *J Am Mosq Control Assoc* 2001, **17**:181–185.
22. Zubair L, Galappaththy GN, Yang H, Chandimala J, Yahiya Z, Amerasinghe P, et al: **Epochal changes in the association between malaria epidemics and El Niño in Sri Lanka.** *Malar J* 2008, **7**:140.
23. Riët OJ, Vounatsou P, Gunawardena DM, Galappaththy GN, Amerasinghe PH: **Temporal correlation between malaria and rainfall in Sri Lanka.** *Malar J* 2008, **7**:77.

doi:10.1186/1475-2875-12-98

Cite this article as: Mitjà et al.: Malaria epidemiology in Lihir Island, Papua New Guinea. *Malaria Journal* 2013 **12**:98.

Submit your next manuscript to BioMed Central and take full advantage of:

- Convenient online submission
- Thorough peer review
- No space constraints or color figure charges
- Immediate publication on acceptance
- Inclusion in PubMed, CAS, Scopus and Google Scholar
- Research which is freely available for redistribution

Submit your manuscript at
www.biomedcentral.com/submit

