

Research article

Open Access

Performance of in-hospital mortality prediction models for acute hospitalization: Hospital Standardized Mortality Ratio in Japan

Hiroaki Miyata*¹, Hideki Hashimoto², Hiromasa Horiguchi³, Shinya Matsuda⁴, Noboru Motomura⁵ and Shinichi Takamoto⁵

Address: ¹Department of Healthcare Quality Assessment, Graduate School of Medicine, University of Tokyo, Japan, ²Department of Health Economics and Epidemiology Research, School of Public Health, University of Tokyo, Japan, ³Department of Health Management and Policy, Graduate School of Medicine, University of Tokyo, Japan, ⁴Department of Preventive Medicine and Community Health, University of Occupational and Environmental Health, Fukuoka, Japan and ⁵Department of Cardiothoracic Surgery, Faculty of Medicine, University of Tokyo, Japan

Email: Hiroaki Miyata* - h-m@umin.ac.jp; Hideki Hashimoto - hidehashimoto-circ@umin.ac.jp; Hiromasa Horiguchi - hiromasa-tky@umin.ac.jp; Shinya Matsuda - smatsuda@med.uoeh-u.ac.jp; Noboru Motomura - noboru@motomura.org; Shinichi Takamoto - takamoto-tho@h.u-tokyo.ac.jp

* Corresponding author

Published: 7 November 2008

Received: 7 August 2008

BMC Health Services Research 2008, 8:229 doi:10.1186/1472-6963-8-229

Accepted: 7 November 2008

This article is available from: <http://www.biomedcentral.com/1472-6963/8/229>

© 2008 Miyata et al; licensee BioMed Central Ltd.

This is an Open Access article distributed under the terms of the Creative Commons Attribution License (<http://creativecommons.org/licenses/by/2.0>), which permits unrestricted use, distribution, and reproduction in any medium, provided the original work is properly cited.

Abstract

Objective: In-hospital mortality is an important performance measure for quality improvement, although it requires proper risk adjustment. We set out to develop in-hospital mortality prediction models for acute hospitalization using a nation-wide electronic administrative record system in Japan.

Methods: Administrative records of 224,207 patients (patients discharged from 82 hospitals in Japan between July 1, 2002 and October 31, 2002) were randomly split into preliminary (179,156 records) and test (45,051 records) groups. Study variables included Major Diagnostic Category, age, gender, ambulance use, admission status, length of hospital stay, comorbidity, and in-hospital mortality. ICD-10 codes were converted to calculate comorbidity scores based on Quan's methodology. Multivariate logistic regression analysis was then performed using in-hospital mortality as a dependent variable. C-indexes were calculated across risk groups in order to evaluate model performances.

Results: In-hospital mortality rates were 2.68% and 2.76% for the preliminary and test datasets, respectively. C-index values were 0.869 for the model that excluded length of stay and 0.841 for the model that included length of stay.

Conclusion: Risk models developed in this study included a set of variables easily accessible from administrative data, and still successfully exhibited a high degree of prediction accuracy. These models can be used to estimate in-hospital mortality rates of various diagnoses and procedures.

Background

Numerous studies have shown that the quality of healthcare is variable and often inadequate [1-3]. Initiatives to

measure healthcare quality are an important focus for policymakers who believe that such measurements can drive quality-improvement programs [4]. The measurement of

healthcare quality includes process and outcome measurements [5]. Outcome evaluation, including in-hospital mortality, requires adequate risk-adjustment for different patient mixes to make appropriate evaluations of healthcare performance [6]. Because of the clear definition of outcome and influential patient conditions, disease-specific risk adjustment models have been developed to a certain extent in several specialties (e.g. cardiovascular diseases) and have been available for various quality improvement activities [7-10].

Although disease-specific risk adjustment may be useful for quality improvement of a specific type of care, more generic case-mix risk-standardized outcomes are required for generalized quality evaluation across specialties [11]. In the United States, several generic case-mix measures are available in commercial as well as non-commercial sources (e.g. APACHE, MedisGroup, Adjusted Clinical Group, Diagnostic Cost Groups, and the RxRisk model) [12-14], and have been applied to categorizing patients according to resource needs. However, many of these systems require detailed clinical and/or administrative data that involve extensive data collection. Furthermore, most of these case-mix measures target healthcare costs rather than clinical outcomes.

To alleviate the burden of data collection, risk prediction models for in-hospital mortality using administrative data have been proposed [15,27-29]. One study used a modified version of the Charlson Index [16] as a summary score of co-existing diagnoses. A recent international comparative study [17] demonstrated that the estimated comorbidity index could predict the chance of in-hospital death with relatively high precision (c-index of approximately 0.80), although the accuracy was suboptimal when Japanese data were analyzed. In this study, we developed a new prediction model for in-hospital mortality by using the same electronic dataset with national standardized format used in the aforementioned study. We successfully exceeded previously demonstrated predictive precision by including patient demographics and multiple administrative variables. Our study demonstrates a potential use of the developed prediction model for benchmarking the quality of healthcare across various performance units with the national database.

Methods

Data source

We used a dataset provided by the Ministry of Health, Labor, and Welfare that was originally used to evaluate a patient classification system newly introduced to 80 university affiliated hospitals and 2 national center hospitals for reimbursement since 2003. The new classification system, called Diagnosis Procedure Combination (DPC), includes information regarding up to two major diag-

noses and up to six co-existing diagnoses. The 2003 version of the DPC patient classification system includes 16 major diagnosis categories (MDC) and 575 disease sub-categories which are coded in ICD-10 format. The dataset also included additional information on patient demographics, use and types of surgical procedures, emergency/elective hospitalization, length of stay (LOS), and discharge status including in-hospital death [18-20]. The dataset originally included information derived from hospital administrative and clinical information provided by participating hospitals to the Ministry research group, then was made anonymous and fed back to the hospitals for benchmarking purposes. Records for 282,064 patients who were discharged from 82 hospitals between July 1, 2002 and October 31, 2002 were distributed and made available for public use as of June 2008. Following the inclusion criteria of previous studies on Hospital Standardized Mortality Ratio (HSMR) [21,22], we excluded MDC categories with mortality rates of less than 0.5% from our analysis. The data (n = 224,207) were then randomly assigned further into two subsets that were split 80/20, one for model development and the other for validation tests. The development dataset included 179,156 records and the validation dataset included 45,051 records. The datasets were made anonymous and prepared by the government sector for public use. Thus, data use was officially approved and protection of confidential information is ensured.

Model building

We started with a prediction model by referring to the Canadian model of HSMR as mentioned earlier [21,22]. The model includes age as the ordinal variable (under 60, 60-69, 70-79, 80-89, and 90 and over), gender, use of an ambulance at admission, admission status (emergency/elective), LOS, MDC, and comorbidities (model 1). We also tested another prediction model which omitted LOS (model 2). The rationale is that the model without LOS should be a "pure" prediction model since LOS can be regarded as an outcome affected by patient characteristics and hospital care quality. Several diagnosis-specific models also consider the duration of hospitalization as a part of outcome and do not include it as a predictor variable [23,24]. Based on Quan's methodology [15], the ICD-10 code of each co-existing diagnosis was converted into a score, and was summed up for each patient case to calculate a Charlson Comorbidity Index score. Scores were then classified into five categories: 0, 1-2, 3-6, 7-12, and 13 and over.

We did not include surgical treatment status as a risk parameter because the decision of whether or not to operate on a patient with a certain medical condition would vary and depend on the clinical judgment of each hospital

team. Also, surgery is not a treatment option in certain areas of medicine.

Analytical Methods

A multivariate logistic regression analysis was performed to predict in-hospital mortality by using the development dataset. Tests of model performance and model fitness were conducted using the test dataset. The prediction accuracy of the logistic models was determined using the c-index [25], and the c-index of the full (models 1 and 2) and partial models were compared. A c-index value of 0.5 indicates that the model is no better than random chance in predicting death, and a value of 1.0 suggests perfect discrimination. The models were calibrated by plotting observed versus predicted deaths based on risk. All analyses were conducted with SPSS version 15.0J (SPSS Japan, Inc).

Results

Patient Demographics in the Models

Table 1 shows in-hospital mortality by MDCs in the original full dataset. We excluded 6 out of 15 diagnostic categories due to low mortality rates (< 0.5%). The 9 remaining diagnostic categories (n = 224,207) accounted for almost 99% of in-hospital mortality in total acute hospitalization cases. We further grouped 4 MDCs with lowest mortality into one, resulting in 6 MDCs for the following analysis.

Of the 179,156 patients included in the development dataset, 53.2% were male, 35.9% had emergency status at admission, and 8.9% used an ambulance (Table 2). Nearly half (46.6%) of the patients were under 60 years of age at admission, and 9.2% were 80 years or over. The digestive system, hepatobiliary system, and pancreas

Table 1: Discharge mortality rate in each Major Diagnostic Categories (n = 282064)

	number of patients	discharge mortality	Discharge mortality rate (%)	Contributing proportion to all discharge mortality (n = 6117)	cumulative mortality rate	MDC code	category in prediction models
Digestive System, CHepatobiliary System And Pancreas	51514	1932	3.8	31.6	31.6	6	
Respiratory System	30283	1719	5.7	28.1	59.7	4	
Blood and Blood Forming Organs and Immunological Disorders	6070	592	9.8	9.7	69.4	13	
Kidney, Urinary Tract and Male Reproductive System	24415	417	1.7	6.8	76.2	11	others
Nervous System	16192	360	2.2	5.9	82.1	1	
Circulatory System	29408	282	1.0	4.6	86.7	5	
Female Reproductive System, Pregnancy, Childbirth And Puerperium	25659	246	1.0	4.0	90.7	12	others
Injuries, Burns and Others	19113	206	1.1	3.4	94.1	16	others
Breast	4752	151	3.2	2.5	96.6	9	others
Musculoskeletal System And Connective Tissue	16801	142	0.8	2.3	98.9	7	others
Endocrine, Nutritional And Metabolic System	10828	47	0.4	0.8	99.6	10	excluded
Skin, Subcutaneous Tissue	4458	9	0.2	0.1	99.8	8	excluded
Ear, Nose, Mouth And Throat	14086	5	0.04	0.1	99.9	3	excluded
Pediatric disease	3497	5	0.14	0.1	100.0	15	excluded
Eye	19768	3	0.02	0.0	100.0	2	excluded
Newborn And Other Neonates (Perinatal Period)	5220	1	0.02	0.0	100.0	14	excluded
Total	282064	6117	2.2				

Table 2: Characteristics of patients in learning dataset and test dataset (n = 224207)

		All patients (n = 224207)		Learning dataset (n = 179156)		Test dataset (n = 45051)	
		Patients	%	Patients	%	Patients	%
Major Diagnostic Category	Nervous System	16192	7.2	12996	7.3	3196	7.1
	Respiratory System	30284	13.5	24277	13.6	6007	13.3
	Circulatory System	29407	13.1	23570	13.2	5837	13.0
	Digestive System, CHepatobiliary System And Pancreas	51514	23.0	41125	23.0	10389	23.1
	Blood and Blood Forming Organs and Immunological Disorders	6070	2.7	4829	2.7	1241	2.8
	Others	90740	40.5	72359	40.4	18381	40.8
Sex	male	119216	53.2	95343	53.2	23873	53.0
Age (years)	under60	104341	46.5	83518	46.6	20823	46.2
	60-69	47703	21.3	38148	21.3	9555	21.2
	70-79	51481	23.0	41104	22.9	10377	23.0
	80-89	18033	8.0	14305	8.0	3728	8.3
	90-	2649	1.2	2081	1.2	568	1.3
Status emergency Use of an ambulance		80515	35.9	64282	35.9	16233	36.0
Total score of Charlson Index	score0	20052	8.9	15996	8.9	4056	9.0
	score1,2	153710	68.6	122898	68.6	30812	68.4
	score3-6	50996	22.7	40812	22.8	10184	22.6
	score7-12	13742	6.1	10856	6.1	2886	6.4
	score13-	4095	1.8	3234	1.8	861	1.9
Length of stay (days)	under10	1664	0.7	1356	0.8	308	0.7
	10-19	109769	49.0	87979	49.1	21790	48.4
	20-29	52871	23.6	42114	23.5	10757	23.9
	30-	26190	11.7	20824	11.6	5366	11.9
Hospital mortality		35377	15.8	28239	15.8	7138	15.8
		6047	2.7	4804	2.7	1243	2.8

made up the largest share (22%) of MDCs, followed by the respiratory system (13.5%), circulatory system (13.1%), and nervous system (7.2%). The majority of patients (68.6%) had a total score of 0 for the Charlson Comorbidity Index, and only 2.5% of patients had a score higher than 6.

Prediction Models (development dataset; n = 179,156)

Table 3 shows the in-hospital mortality prediction model with LOS as a predictor (Model 1). Using those with a LOS under 10 days as a reference, the odds ratio of in-hospital death for patients with longer LOS increased linearly; the odds ratio for patients with LOS ≥ 30 days reached 4.35 (4.01-4.72). Using the neurological MDC as a reference, MDCs for respiratory, digestive, hepatology, and hematology diseases showed a significantly higher odds ratio for in-hospital death, whereas the cardiology MDC showed a significantly lower odds ratio. Older age, gender, use of an ambulance at admission, and emergency admission status also showed significantly higher odds ratios. Finally, scores for Charlson Index categories exhibited an increasing linear trend in odds ratio as scores increased.

Table 4 shows the prediction model without LOS (model 2). The overall statistical significance of odds ratios was completely identical to that of model 1, although the magnitude was somewhat smaller for MDCs and larger for Charlson Index categories.

Model Performance (test dataset; n = 45,051)

Table 2 compares patient characteristics in the test dataset (n = 45,051 patients) to those of the development dataset. The two datasets were almost identical in the distribution of patient characteristics and case mix. In-hospital mortality rates were 2.68% and 2.76% for the development and test datasets, respectively.

Table 5 shows the c-indexes for models 1 and 2, and those using a partial set of predictors. C-index values were fairly high in both models (0.841 and 0.869 for models 1 and 2, respectively). A partial model which only included patient characteristics had a c-index of 0.727, and the addition of MDC increased the c-index to 0.786. Further including the comorbidity index resulted in only a marginal increase to 0.841. The model that included more

Table 3: MODEL1 Hospital mortality prediction model with length of stay (n = 179156)

		odds ratio	95% CI		p
			lower	upper	
Sex	Male	1.20	1.13	1.28	0.00
Age	under60, 60–69, 70–79, 80–89, 90-	1.47	1.43	1.51	0.00
Major Diagnostic Category	Nervous System	*			0.00
	Respiratory System	3.97	3.47	4.55	0.00
	Circulatory System	0.69	0.58	0.83	0.00
	Digestive System, CHepatobiliary System And Pancreas	3.27	2.85	3.74	0.00
	Blood and Blood Forming Organs and Immunological Disorders	6.77	5.73	7.98	0.00
	Others	1.27	1.10	1.46	0.05
Status emergency		3.72	3.47	3.99	0.00
Use of an ambulance		1.82	1.68	1.98	0.00
Total score of Charlson Index	score0	*			0.00
	score1,2	1.44	1.33	1.57	0.00
	score3–6	4.07	3.72	4.45	0.00
	score7–12	8.25	7.32	9.29	0.00
	score13-	15.05	12.86	17.61	0.00
Length of Stay	under10	*			0.00
	10–19	1.39	1.26	1.52	0.00
	20–29	1.90	1.71	2.11	0.00
	30-	4.35	4.01	4.72	0.00

information on comorbidities showed a higher c-index. Figures 1 and 2 demonstrate the goodness of fit regarding the models (i.e., how well the predicted mortality rates match the observed mortality rates among patient subgroups of risk). Close agreement between the predicted and observed mortality rates with our models was seen across various patient risk subgroups analyzed.

Discussion

The prediction model of in-hospital mortality developed in this study is fairly consistent with observed mortality. Results also suggest that inclusion of both comorbidity and other demographic/clinical characteristics of patients

account for the better performance of our model compared to a previously described model [17]. When administrative data are used in clinical outcomes research, algorithms to code comorbidities are essential for defining comorbidities. Charlson comorbidity measurement tools [16] are widely used with administrative data to determine the burden of the disease or case-mix. Past studies suggest that the original Charlson Index by chart review and its adaptations for use with administrative databases discriminate mortality similarly [15,17]. The database used in this study assigns to each patient one to six diagnostic codes. Counting multiple comorbidities markedly enhanced accuracy compared to counting

Table 4: MODEL2 Hospital mortality prediction model without length of stay (n = 179156)

		odds ratio	95% CI		p
			lower	upper	
Sex	Male	1.19	1.12	1.26	0.00
Age	under60, 60–69, 70–79, 80–89, 90-	1.58	1.54	1.62	0.00
Major Diagnostic Category	Nervous System	*			0.00
	Respiratory System	3.40	2.98	3.89	0.00
	Circulatory System	0.56	0.47	0.67	0.00
	Digestive System, CHepatobiliary System And Pancreas	2.66	2.32	3.03	0.00
	Blood and Blood Forming Organs and Immunological Disorders	8.09	6.88	9.52	0.00
	Others	1.15	1.00	1.32	0.05
Status emergency		3.72	3.51	3.27	3.76
Use of an ambulance		1.82	1.87	1.72	2.03
Total score of Charlson Index	score0	*			0.00
	score1,2	1.63	1.50	1.77	0.00
	score3–6	5.30	4.86	5.77	0.00
	score7–12	10.89	9.70	12.23	0.00
	score13-	19.65	16.87	22.90	0.00

Table 5: Hospital mortality prediction model performance metrics

	C-index (95%CI)
Model 1 (with length of hospital stay)	0.869 (0.860–0.879)
Model 2 (without length of hospital stay)	0.841 (0.830–0.852)
Patients characteristics only (age, sex, status emergency, use of an ambulance)	0.727 (0.713–0.742)
Patients characteristics with MDC	0.786 (0.773–0.799)
Charlson Index only main diagnosis	0.585 (0.567–0.603)
Charlson Index with up to 4 diagnosis	0.639 (0.621–0.692)
Charlson Index with up to 6 diagnosis	0.675 (0.657–0.692)

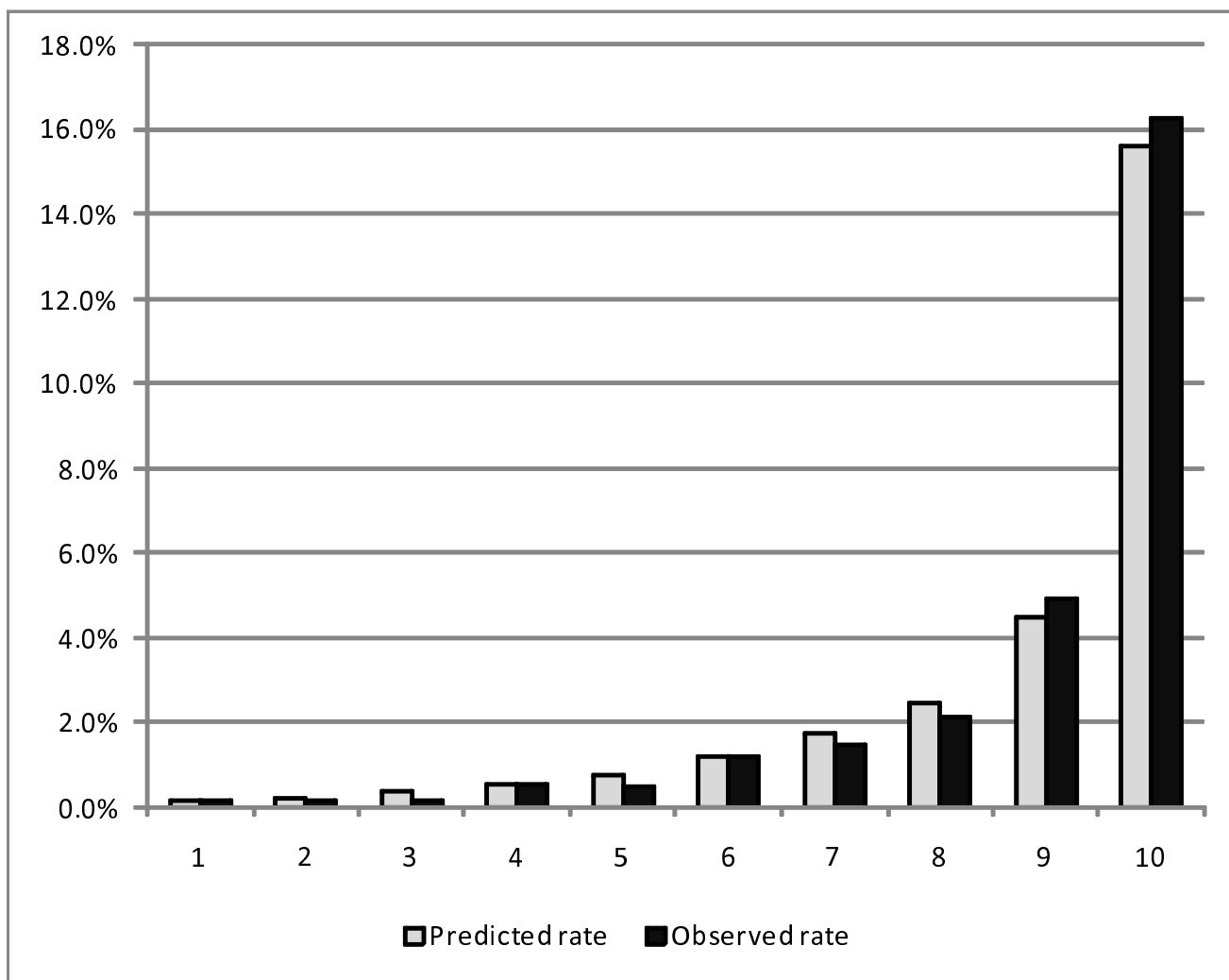


Figure 1
Model I hospital mortality prediction model calibration (n = 45051). * Figure 1 shows the result of the goodness of fit test regarding the model I based on test dataset (n = 45051).

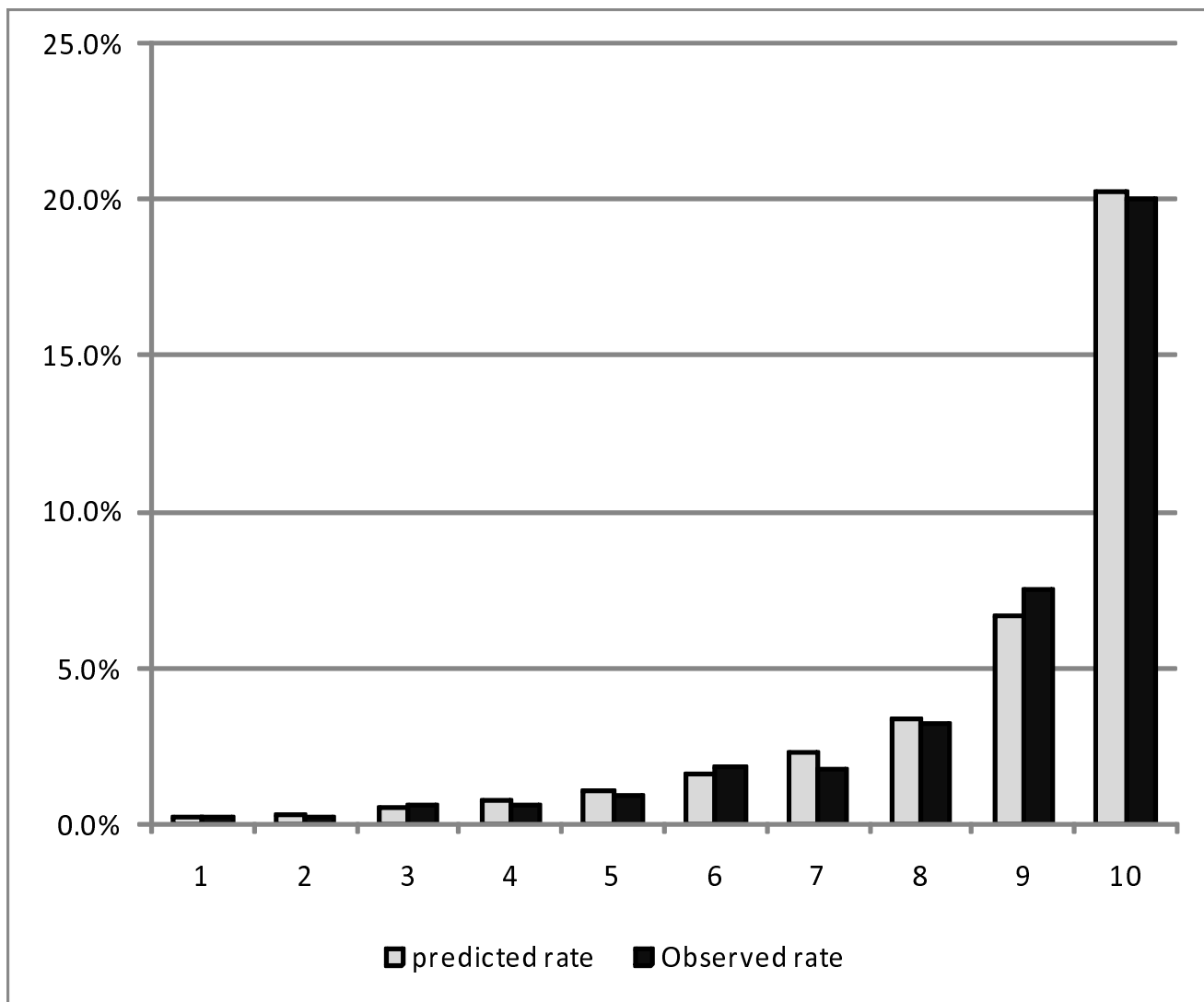


Figure 2
Model2 hospital mortality prediction model calibration(n = 45051). * Figure 2 shows the result of the goodness of fit test regarding the model 2 based on test dataset (n = 45051).

comorbidity based on a single ICD-10 code. In addition to comorbidities based on ICD-10 codes, MDCs were also incorporated into our models. By including MDCs, our model could better reflect the characteristics of major patient conditions among all co-existing diagnoses. This may also help to explain the improved performance of our model compared to former prediction models (c-index: 0.69–0.71) which incorporated only the Charlson Index in the analysis of Japanese data [17].

Recent studies in the U.S. introduced a new risk prediction model that includes extended administrative data with lab test results [30,31]. Although the inclusion of detailed clinical data may further improve prediction perform-

ance, it requires a sophisticated standardized information system on a nationwide scale. Our prediction model exhibited a comparable level of precision, using variables easily accessible in conventional administrative electronic record systems. As we demonstrated, inclusion of patient demographics, conditions at admission, and the category of major diagnosis with a summary score of comorbidities may be useful and efficient in improving model performance.

In the present study, we developed two models that include and exclude LOS. It is possible that a hospital may promote premature discharge in order to lower in-hospital mortality, thereby adjusting for LOS to allow for a fair

comparison of hospital performance. However, the duration of hospitalization is a parameter reflecting various factors other than in-hospital mortality risk, such as the quality of hospital management and socio-economic conditions that facilitate earlier discharge (e.g. availability of informal care at home). Since no major difference in accuracy was observed between the two models, we believe that the use of model 1, which excludes LOS, would be more suitable to adjust for the likelihood of in-hospital death purely due to patient conditions.

In contrast to the risk factor of age, gender did not have a pronounced impact on mortality in our study. Previous studies on cardiovascular surgery in Japan have also shown that the impact of gender on in-hospital mortality is negligible even in risk prediction models with detailed clinical variables [9]. The odds ratio of the circulatory system category was unexpectedly low and may require some explanation. The average risk of cardiovascular hospitalization may have been relatively low in this study because many patients are hospitalized for cardiac catheterization as a post-intervention evaluation in Japan. Thus, an alternative model that categorizes hospitalization for evaluation separately may increase performance in Japanese cases and deserves further consideration in future studies.

A number of limitations of this study are worth noting. Exclusion of 6 low mortality MDCs might bias the performance of our models. Given the c-index for model 2 ($n = 282,064$) was 0.854, we believe that our model can be useful for hospital mortality analysis in all types of disease. Nevertheless, it would be necessary to update the hospital prediction model periodically, given that the relative importance of factors contributing to mortality may change due to future medical innovations in diagnosis and therapy.

Conclusion

This study is one of the few Japanese studies that verifies and demonstrates the accuracy of in-hospital mortality prediction models that take into account all diseases. As standardized hospital mortality rates could be used as indicators of quality of care and in setting national standards, risk adjustment in relation to in-hospital mortality is thought to be useful in implementing hospital-based efforts aimed at improving the quality of medical treatment [26]. The risk model described in this study demonstrates a good degree of discrimination and calibration. In addition to its statistical evaluation, it is important that the model can be readily used for risk prediction by clinicians in the field. A major task for the future is to consider how to improve this model in order to make it more detailed, its analytical qualities even more convincing, and its use more compelling.

Competing interests

The authors declare that they have no competing interests.

Authors' contributions

HM conceived of the study and designed the protocol. HM and HH1 wrote the paper. HH2 managed data collection and data cleaning. All authors have read and approved the final manuscript.

Acknowledgements

The authors express thanks to following researchers in the Study Group on Diagnosis Procedure Combination that made DPC public data available.

Makoto Anan, Kiyohide Fushimi, Yuichi Imanaka, Koichi B. Ishikawa, Kenji Hayashida, and Kazuaki Kuwabara

Funding Sources

None

References

- Jencks SF, Huff ED, Cuerdon T: **Change in the quality of care delivered to Medicare beneficiaries, 1998-1999 to 2000-2001.** *JAMA* 2003, **289**:305-12.
- McGlynn EA, Asch SM, Adams J, et al.: **The quality of health care delivered to adults in the United States.** *N Engl J Med* 2003, **348**:2635-45.
- Institute of Medicine: **Crossing the quality chasm: a new health system for the 21st century.** Washington, D.C.: National Academies Press; 2001.
- Galvin R, Milstein A: **Large employers' new strategies in health care.** *N Engl J Med* 2002, **347**:939-42.
- Donabedian A: **Explorations in Quality Assessment and Monitoring. The Definition of Quality and Approaches to Its Assessment.** In *Ann Arbor Volume 1*. MI: Health Administration Press; 1980.
- Iezzoni LI: **Risk adjustment for measuring health care outcomes.** Chicago, IL: Health Administration Press; 2003.
- Bradley EH, Herrin J, Elbel B, et al.: **Hospital quality for acute myocardial infarction: correlation among process measures and relationship with short-term mortality.** *JAMA* 2006, **296**(1):72-78.
- Krumholz HM, Wang Y, Mattera JA, et al.: **An administrative claims model suitable for profiling hospital performance based on 30-day mortality rates among patients with an acute myocardial infarction.** *Circulation* 2006, **113**(13):1683-1692.
- Motomura N, Miyata H, Tsukihara H, Takamoto S: **Risk Model of Thoracic Aortic Surgery in 4707 Cases from a Nationwide Single-race Population, via a Web-based Data Entry System: The First Report of 30-day and 30-day Operative Outcome Risk Models for Thoracic Aortic Surgery.** *Circulation* 2008, **118**:S153-S159.
- Miyata H, Motomura N, Ueda U, Mastuda H, Takamoto S: **Effect of procedural volume on outcome of CABG surgery in Japan: Implication toward minimal volume standards and public reporting.** *Journal of Thoracic and Cardiovascular Surgery* 2008, **135**:1306-12.
- Rosen Ak, Loveland S, Anderson JJ, Rothendler JA, Hankin CS, Rakavski CC, Moskowitz MA, Berlowitz DR: **Evaluating diagnosis-based case-mix measures: how well do they apply to the VA population?** *Medical Care* 2001, **39**(7):692-704.
- Starfield B, Weiner J, Mumford L, et al.: **Ambulatory Care Groups: a categorization of diagnoses for research and management.** *Health Serv Res* 1991, **26**:53-74.
- Ellis RP, Ash A: **Refinements to the diagnostic cost group (DCG) model.** *Inquiry* 1995, **32**:418-429.
- Fishman PA, Goodman MJ, Hornbrook MC, Meenan RT, Bachman DJ, Rosetti MCO: **Risk adjustment using automated ambulatory**

- pharmacy data: **The RxRisk Model**. *Medical Care* 2003, **41(1)**:84-99.
15. Quan H, Sundararajan V, Halfon P, Fong A, Burnand B, Luthi JC, Saunders LD, Beck CA, Feasby TE, Ghali WA: **Coding algorithms for defining comorbidities in ICD-9-CM and ICD-10 administrative data**. *Medical Care* 2005, **43**:1130-39.
 16. Charlson ME, Pompei P, Ales KL, et al.: **A new method of classifying prognostic comorbidity in longitudinal studies: development and validation**. *J Chronic Dis* 1987, **40**:373-383.
 17. Sundararajan V, Quan H, Halfon P, Fushimi K, Luthi JC, Burnand B, Ghali W: **Cross-national comparative performance of three versions of the ICD-10 Charlson Index**. *Med Care* 2007, **45**:1210-1215.
 18. Matsuda S, Fushimi K, Hashimoto H, Kuwabara K, Imanaka Y, Horiguchi H, Ishikawa KB, Anan M, Ueda K: **The Japanese Case-Mix Project: Diagnosis Procedure Combination (DPC)**. *Proceedings of the 19th International Case Mix Conference PCSIE, 8-11 October 2003; Washington, DC 2003*:121-124.
 19. Okamura S, Kobayashi R, Sakamaki T: **Case-mix payment in Japanese medical care**. *Health Policy* 2005, **74**:282-286.
 20. Fushimi K, Hashimoto H, Imanaka Y, Kuwabara K, Horiguchi H, Ishikawa KB, Matsuda S: **Functional mapping of hospitals by diagnosis-dominant case-mix analysis**. *BMC Health Serv Res* 7:5013. 2007 Apr 10;
 21. Canadian Institute for Health Information: **HSMR: A New Approach for Measuring Hospital Mortality Trends in Canada**. Ottawa: CIHI; 2007.
 22. Heijink R, Koolman X, Pieter D, Veen A, Jarman B, Westert G: **Measuring and explaining mortality in Dutch hospitals; The hospital standardized mortality rate between 2003 and 2005**. *BMC Health Services Research* 2008, **8**:73.
 23. Anderson HV, Shaw ES, Brindis RG, McKay CR, Klein LW, Krone RJ, Ho KKL, Rumsfeld JS, Smith SC, Weintraub WS: **Risk-adjusted mortality analysis of percutaneous coronary interventions by American College of Cardiology/American Heart Association guidelines recommendations**. *Am J Cardiol* 2007, **99**:189-196.
 24. Shroyer AL, Coombs LP, Peterson ED, et al.: **The Society of Thoracic Surgeons: 30-day operative mortality and morbidity risk models**. *Ann Thorac Surg* 2003, **75(6)**:1856-1864.
 25. Ash A, Schwartz M: **Evaluating the performance of risk-adjustment methods: dichotomous variables**. In *Risk adjustment for measuring health care outcomes*. Ann Arbor Edited by: Iezzoni L. MI: Health Administration Press; 1994:313-46.
 26. Jarman B, Bottle A, Aylin P, Browne M: **Monitoring changes in hospital standardised mortality ratios**. *BMJ* 2005, **330**:329.
 27. Jarman B, Gault S, Alves B, Hider A, Dolan S, Cook A, Hurwitz B, Iezzoni L: **Explaining differences in English hospital death rates using routinely collected data**. *BMJ* 1999, **318**:1515-20.
 28. Lakhani A, Coles J, Eayres D, Spence C, Ratchet B: **Creative use of existing clinical and health outcomes data to assess NHS performance in England: Part I – performance indicators closely linked to clinical care**. *BMJ* 2005, **330**:1426-1431.
 29. Aylin P, Bottle A, Majeed A: **Use of administrative data or clinical databases as predictors of risk of death in hospital: comparison of models**. *BMJ* 2007, **334**:1044.
 30. Escobar GJ, Greene JD, Scheirer P, Gardner MN, Draper D, Kipnis P: **Risk-adjusting hospital inpatient mortality using automated inpatient, outpatient, and laboratory databases**. *Medical Care* 2008, **46**:232-39.
 31. Tabak YP, Johannes RS, Silber JH: **Using automated clinical data for risk adjustment: Development and validation of six disease-specific mortality predictive models for pay-for-performance**. *Medical Care* 2008, **45**:789-805.

Pre-publication history

The pre-publication history for this paper can be accessed here:

<http://www.biomedcentral.com/1472-6963/8/229/prepub>

Publish with **BioMed Central** and every scientist can read your work free of charge

"BioMed Central will be the most significant development for disseminating the results of biomedical research in our lifetime."

Sir Paul Nurse, Cancer Research UK

Your research papers will be:

- available free of charge to the entire biomedical community
- peer reviewed and published immediately upon acceptance
- cited in PubMed and archived on PubMed Central
- yours — you keep the copyright

Submit your manuscript here:
http://www.biomedcentral.com/info/publishing_adv.asp

