

RESEARCH ARTICLE

Open Access

# Cost-effectiveness analysis of adjuvant chemotherapies in patients presenting with gastric cancer after D2 gastrectomy

Bin Wu<sup>1</sup>, Te Li<sup>2</sup>, Jian Cai<sup>3</sup>, Yuejuan Xu<sup>4</sup> and Gang Zhao<sup>5\*</sup>

## Abstract

**Background:** To analyze and compare the economic outcomes of adjuvant chemotherapy with capecitabine plus oxaliplatin (referred to as the XELOX strategy) and of S-1 (the S-1 strategy) for gastric cancer patients after D2 gastrectomy.

**Methods:** A Markov model was developed to simulate the lifetime disease course associated with stage II or III gastric cancer after D2 gastrectomy. The lifetime quality-adjusted life years (QALYs), associated costs, and incremental cost-effectiveness ratios (ICERs) were estimated. The clinical data were derived from the results of pilot studies. Direct costs were estimated from the perspective of the Chinese healthcare system, and the utility data were measured from end-point observations of Chinese patients. Sensitivity analyses were used to explore the impact of uncertainty on the model's outcomes.

**Results:** The combined adjuvant chemotherapy strategy with XELOX yielded the greatest increase in QALYs over the course of the disease (8.1 QALYs compared with 7.8 QALYs for the S-1 strategy and 6.2 for surgery alone). The incremental cost per QALY gained using the XELOX strategy was significantly lower than that for the S-1 strategy (\$3,502 vs. \$6,837, respectively). The results were sensitive to the costs of oxaliplatin and the hazard ratio of relapse-free survival.

**Conclusion:** The observations reported herein suggest that adjuvant therapy with capecitabine plus oxaliplatin is a highly cost-effective strategy and more favorable treatment option than the S-1 strategy in patients with stage II or III gastric cancer who have undergone D2 gastrectomy.

**Keywords:** Gastric cancer, Adjuvant chemotherapy, Economic analysis, Cost-effectiveness

## Background

Despite the declining incidence of gastric cancer, it remains the second leading cause of cancer deaths worldwide, with approximately 736,000 deaths and 988,000 new cases each year [1]. East Asia, including China, Korea, and Japan, has one of the highest incidences and mortality rates of gastric cancer [2-4]. D2 gastrectomy is the most widely used surgical treatment for localized gastric cancer, and long-term follow-up has demonstrated a reduction in gastric cancer-related deaths in patients who have undergone D2 gastrectomy compared with D1 gastrectomy

[5-7]. As a result, D2 gastrectomy is preferred in Asia for patients presenting with resectable gastric cancer [8].

Although surgery is the most efficient treatment for operable cancer, recurrence may result in cases with poor prognosis. As an important component of resectable gastric cancer therapy, adjuvant chemotherapy could improve patient outcomes, although no consensus about the preferred treatment has been reached [9-11]. According to the guidelines of the National Comprehensive Cancer Network (NCCN), both capecitabine plus oxaliplatin and S-1 are recommended as adjuvant treatments for gastric cancer [12].

Capecitabine is a new oral drug derived from fluorouracil (FU), which is widely used in the therapy of breast, gastrointestinal, and head and neck cancers [13-15]. A

\* Correspondence: zhaogangrjgs@126.com

<sup>5</sup>Department of General Surgery, Ren Ji Hospital, School of Medicine, Shanghai Jiao Tong University, Shanghai, China

Full list of author information is available at the end of the article

regimen consisting of oxaliplatin plus capecitabine is very effective and tolerable in patients with gastric cancer [16]. By contrast, S-1 is an orally active combination of tegafur, gimeracil, and oteracil at a molar ratio of 1:0.4:1 and is used as a novel mode of neoadjuvant chemotherapy [2,17,18]. As relatively new adjuvant chemotherapies, both modes of therapy have the potential to decrease recurrence rates and achieve survival benefits for patients compared with surgery alone [19-21]. However, both modes of therapy markedly increase the cost of the entire treatment approach for gastric cancer, and widespread use of these modes would be limited, particularly in health resource-poor countries such as China [22].

Cost-effectiveness analyses can improve resource allocation efficiency by identifying therapies that provide the greatest health benefits at acceptable cost. However, clinical trials that feature health economics assessments are scarce. Therefore, we have used a mathematical modeling approach to conduct health economics analyses.

Within this study, we have developed a health economics model to evaluate the long-term cost-effectiveness of two adjuvant chemotherapies (the adjuvant S-1 and XELOX strategies) compared with surgery alone in patients presenting with gastric cancer and undergoing D2 gastrectomy in China. The model integrates the best available evidence in terms of costs and clinical outcomes resulting from the use of adjuvant therapies to determine whether such strategies truly represent a health budgetary advantage in the context of the Chinese healthcare system.

## Methods

### Analytical overview and model structure

In this study, we used a Markov cohort model programmed using R software (version 2.15.1; R Development Core Team, Vienna, Austria) to estimate and compare the lifetime direct medical costs and health benefits associated with surgery only or the use of the adjuvant chemotherapies listed below for patients presenting with gastric cancer after D2 gastrectomy. As shown in Figure 1, there were 3 different health states according to the health outcomes in the model: relapse-free survival (RFS), disease recurrence, and death. The predominant adjuvant therapies for gastric cancer patients, S-1 (the S-1 strategy) and capecitabine plus oxaliplatin (the XELOX strategy), were included in the treatment regimens, and the outcomes of these therapies were compared with surgery only (Surgery strategy). The future costs and benefits were discounted using a 3% annual discount rate.

We assumed that the clinical characteristics of the hypothetical gastric cancer cohorts were consistent with published studies, which had a mean age of 59.5 [2,23]. The clinical stage of all gastric cancers was II or III, as confirmed by pathology, and all patients underwent curative D2 gastrectomy. The initial health status of the

patients was RFS. In the Markov models, one patient was always in one of a series of different health states, called Markov states. All events were represented as movements from one state to another [24]. The cycle length of the model was 1 week. At the completion of each cycle, patients either remained in their assigned health state or progressed to a new health state. The probability of RFS and overall survival (OS) for patients in this model were determined according to the RFS and OS survival data reported in clinical trials [25].

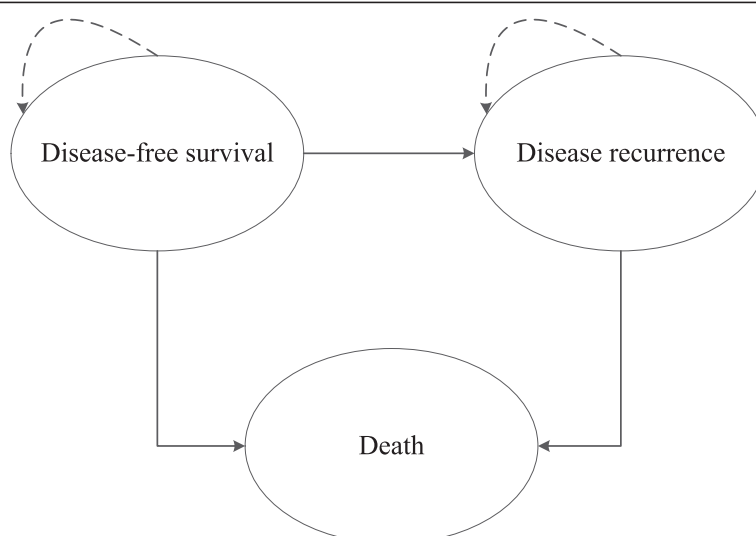
### Clinical data and adjusted indirect comparison

We performed a literature search of the following electronic databases to identify pivotal clinical trials pertaining to adjuvant chemotherapies in patients presenting with gastric cancer and undergoing D2 gastrectomy: PubMed, EMBASE, CINAHL, AltHealthWatch, the Cochrane Library, and the National Library of Science and Technology. The search encompassed the periods from database inception to the end of July 2013. However, no clinical trial directly comparing these three strategies was identified. Therefore, an indirect comparison of key clinical trials was performed. Clinical effectiveness data, including the HR, were extracted from the two pivotal multicenter randomized-controlled clinical trials where patients received surgery only as a common comparator [2,23]. Each of these trials constituted level 1 evidence [26]. Weibull survival models were fitted to the Kaplan-Meier RFS and OS data for surgery only. The transition parameters and proportions were based on randomized clinical trials to the greatest possible extent (Table 1).

The trial reported by the ACTS-GC Group randomized patients presenting with stage II or III gastric cancer who had undergone gastrectomy with extended (D2) lymph-node dissection to surgery followed by adjuvant therapy with S-1 (n = 530) or surgery alone (n = 529). OS at 5 years was 71.7% in the S-1 group and 61.1% in the surgery-alone group (HR, 0.669; 95% CI, 0.540-0.828). RFS at 5 years was 65.4% in the S-1 group and 53.1% in the surgery-alone group (HR, 0.653; 95% CI, 0.537-0.793) [2].

In the CLASSIC trial, 1035 patients were randomized (520 to receive oral capecitabine plus intravenous oxaliplatin and surgery compared with 515 to receive surgery alone). Five-year disease-free survival (DFS) was 68% in the chemotherapy and surgery group and 53% in the surgery-alone group (HR, 0.58, 95% CI 0.47-0.72;  $P < 0.0001$ ). Five-year OS was 78% in the XELOX group and 69% in the surgery-alone group (HR, 0.66, 95% CI 0.51-0.85;  $P = .0015$ ) [23,27].

Indirect comparisons of the three strategies were conducted using the surgery-only survival rate from the reports of the ACTS-GC Group as the reference because the trial reported five-year outcomes. Weibull survival



**Figure 1** Schematic depiction of the health economic model.

models were fitted to the Kaplan-Meier RFS and OS data from the reports of the ACTS-GC Group for the surgery-only strategy. The estimated Weibull scale ( $\lambda$ ) and shape ( $\gamma$ ) parameters are shown in Table 1. The Weibull survival curves of the two adjuvant strategies were derived using the HRs, as previously described by Hoyle, M. *et al.* [28]. The RFS and OS HRs between the alternative adjuvant therapy strategies and surgery-only strategy were derived from the previously mentioned published studies.

Patients could die of natural causes during the RFS period at any point beyond the time horizon of the trial follow-ups. The model used a normal life table from the life tables available to WHO member states (2011) to adjust the mortality risk for patients in RFS [29].

#### Medical costs and utility

The collection of cost and utility data was approved by the ethics committee of Renji Hospital, and the survey qualified as involving only “minimal risks” to the participants. The survey was completely anonymous, and questionnaire responses were not linked with the participants’ identity in the survey process. Verbal informed consent regarding the goals of the study and willingness to participate was received from the potential respondents. This procedure was approved by the ethics committee of Renji Hospital.

Costs were estimated from the perspective of the Chinese healthcare system and reported in 2013 US dollar equivalents. The following direct medical cost components were considered: treatment-related medicine, monitoring and administration, inpatient care, palliative

**Table 1** Clinical data

Parameters	Values	Description and reference
<b>Weibull survival model of RFS for surgery only</b>		
1-97 weeks	Scale = 0.001554; Shape = 1.202; $r^2 = 0.9955$	[2]
Beyond 97 weeks	Scale = 0.02754; Shape = 0.5736; $r^2 = 0.9792$	[2]
<b>Weibull survival model of OS for surgery only</b>		
1-141 weeks	Scale = 0.00005097; Shape = 1.755; $r^2 = 0.9977$	[2]
Beyond 141 weeks	Scale = 0.005259; Shape = 0.8171; $r^2 = 0.9935$	[2]
<b>HR of RFS (compared with surgery only)</b>		
Adjuvant with S-1	0.653 (95% CI: 0.537-0.793)	[2]
Adjuvant with XELOX strategy <sup>#</sup>	0.58 (95% CI: 0.47-0.72)	[27]
<b>HR of OS (compared with surgery only)</b>		
Adjuvant with S-1	0.669 (95% CI: 0.54-0.828)	[2]
Adjuvant with XELOX strategy	0.66 (95% CI: 0.51-0.85)	[27]

<sup>#</sup>We assumed that DFS in the CLASSIC trial was not better than RFS.

end-of-life care, and management of serious adverse events. All unit costs of the health resources were estimated using data from the local health system or the National Development and Reform Commission (NDRC) of China [30].

The estimated treatment costs were based on the following schedules for administration of S-1 or XELOX strategies to patients with RFS after D2 gastrectomy. S-1 was administered as a dose of 40 mg/m<sup>2</sup> twice each day for 4 weeks, followed by 2 weeks of no chemotherapy; this cycle was repeated for 1 year. The treatment regimen for the XELOX strategy consisted of eight 3-week cycles, during which a 2-h intravenous infusion of oxalipatin was given at a dose of 130 mg/m<sup>2</sup> on day 1 and oral capecitabine was given at a dose of 1000 mg/m<sup>2</sup> twice daily on days 1 to 14 of a 3-week cycle. The costs related to SAEs and other costs in the course of adjuvant chemotherapy were derived from a cost analysis study that reported the monetary costs of the two regimens in Chinese gastric cancer patients who had received adjuvant chemotherapy [31]. After cancer progression, salvage chemotherapy and supportive care were available. Approximately 13.5% patients received supportive care, and 86.5% patients received salvage chemotherapy after disease relapse [25]. Based on the literature and expert opinion, the median number of 3-week treatment cycles was seven [25]. The overall costs related to salvage chemotherapy and supportive care were estimated from 133 records of patients who presented with recurrent gastric cancer and received salvage chemotherapy or supportive care at four teaching hospitals in China from January 2010 to April 2013 (the Renji Hospital, the Second Hospital of Nanjing, the Taixing People's Hospital and the Yuxi People's Hospital). To estimate the dosage of the therapeutic agents, we assumed that a typical patient weighed 65 kg and had a height of 1.64 m, resulting in a body surface area (BSA) of 1.72 m<sup>2</sup> [32]. To simplify the model, we assumed that unused drugs in opened vials were discarded. In addition, the current analysis included the cost of palliative end-of-life care. This cost was estimated from 42 records of patients who died from advanced gastric cancer.

The outcome used in this analysis was QALYs. Utility scores ranged from 0.0 to 1.0, with 1.0 representing perfect health and 0.0 representing death. Two panels, one comprising 36 patients with gastric cancer after D2 gastrectomy (disease duration: 4.5 ± 3.7 years) and one comprising 50 patients with recurrent gastric cancer (disease duration: 0.7 ± 0.5 years), were enrolled in the study to complete an interview to empirically measure the utility scores of each health state subgroup in the model. This measurement was performed using the time trade-off (TTO) elicitation technique, in which patients were asked how many additional years they expected to live and how many of those years (if any) they would

trade in return for receiving a technology that would guarantee permanent perfect health, based on a standard protocol derived from the methods reported by Redelmeier DA [33]. Health state utility scores are listed in Table 2. QALYs were estimated for each weekly cycle as the number of patients in each health state multiplied by their utility scores. Discounted QALYs that had accrued in each cycle were summed over the lifetime years to determine the total discounted QALYs amassed by the cohort.

### Sensitivity analysis

To evaluate the uncertainty of parameter values and the robustness of the model, univariate sensitivity analyses were performed for each parameter in the model over the ranges. The results were presented as a tornado diagram based on the impact of the variable on the incremental net health benefit, using 1 × per capita GDP of China as the cost-effectiveness threshold, according to the World Health Organization (WHO) recommendation [34-36]. Probabilistic sensitivity analyses (PSA) were used to simultaneously evaluate the impact of uncertainty across all parameters, in which distributions were assigned to the input parameters of the model (lognormal distributions for costs, beta distributions for probability parameters and utilities). Using these distributions, 1,000 iterations of 1,000 simulated patients were determined. The outcomes projected from all 1,000 simulations were used to plot acceptability curves to estimate the willingness-to-pay (WTP) threshold for an incremental unit of effectiveness.

## Results

### Validation analyses

The model-derived survival probabilities calculated at specific time points satisfactorily matched those from the clinical trial (Table 3). The RFS and OS data for the different strategies at 3 years and 5 years varied from -5.9% to 2.1% between the model outcomes and the trial data (Table 3). The model outcomes did not exceed the 95% CI of the trial data. Model-derived survival curves did not significantly differ from the results of the clinical trials (Figure 2).

### Base-case analyses

Our model estimated the costs and health outcomes of the different strategies. The adjuvant XELOX strategy yielded the greatest increase in QALYs over the course of the disease (8.1 compared to 7.8 QALYs for the S-1 strategy and 6.2 for the surgery-alone strategy), which can be largely explained by the RFS associated with each strategy. Compared to adjuvant therapy with the S-1 strategy, the incremental cost per QALY gained by using the XELOX strategy was significantly lower: \$3,502 vs. \$6,837 (see Table 4 and Figure 2, and Table 4 and Figure 3, respectively).

**Table 2 Base-case cost estimates (\$, year 2013 values) and utilities**

Parameter	Median	Range	Description and reference
<b>Costs</b>			
Cost of capecitabine per 500 mg	6.6	Fixed	Local charge
Cost of S-1 per 20 mg	9.6	7.9 - 10.1	Local charge
Cost of oxaliplatin per 50 mg	88.9	77.3 - 464.5	Local charge
Cost of follow-up per unit	56.5	42.3 - 70.6	Calculation
Cost of tests per 6-weeks of adjuvant with S-1	197.8	15.9 - 317.5	[31]
Cost of salvage chemotherapy per 3-week cycle	2334.6	1429.3 - 3323.2	Calculation
Cost of palliative end-of-life care	1460.3	1055.3 - 2085.7	Calculation
Cost of supportive care per cycle	115.2	31.7 - 317.5	Calculation
Cost of ADR per 6-week period of adjuvant with S-1	42.3	7.9 - 79.4	[31]
Cost of ADR per 3-week cycle of adjuvant with XELOX strategy	68.9	15.9 - 158.7	[31]
Cost of hospitalization per 3-week cycle of adjuvant with XELOX strategy	373	238.1 - 793.7	[31]
<b>Utilities</b>			
Utility of disease-free survival	0.88	0.8 - 0.97	Measured
Utility of recurrent disease	0.42	0.28 - 0.63	Measured

Key: "&" Values were measured by time trade-off (TTO).

### Sensitivity analyses

The one-way sensitivity analysis revealed that some model variables had a substantial impact on the results of adjuvant therapy using the XELOX strategy compared with surgery alone, including the HR of RFS and the costs of oxaliplatin and supportive care (Figure 4). At the upper boundary of the HR of RFS, the cost of oxaliplatin, the discount rate and the cost per QALY gained (\$) exceeds the very cost-effective threshold (\$6,100). Other factors, including the HR of OS and costs related to supportive care, salvage chemotherapy and the management of ADRs had moderate or minimal impact on the cost per QALY gained. None of

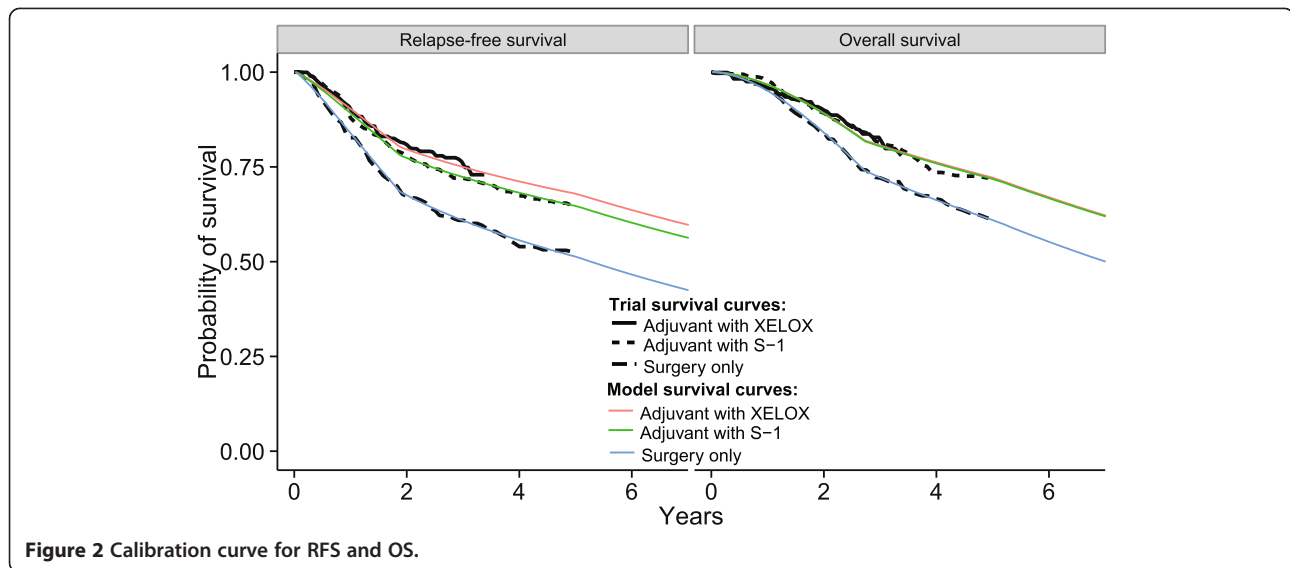
the variable parameters lead to an ICER exceeding a value of \$18,300 per additional QALY gained (which represents three times the per capita GDP of China).

The plot data from the PSA of 1,000 simulations revealed the probabilities of meeting the ICER thresholds of \$6,100 per additional QALY for the XELOX strategy compared with the S-1 and surgery-only strategies (see Figure 5). The probabilities of achieving cost-effectiveness with the XELOX strategy were more than two-thirds compared with the S-1 and surgery-only strategies.

The cost-effectiveness acceptability curves (CEACs) revealed the preferred strategies for gastric cancer when

**Table 3 Survival probabilities from the model outcomes and trial data**

	Model outcome	Trial data	Difference
<b>Disease-free survival</b>			
Surgery only at 3 years	60.8%	59.6% (95% CI, 54.9 - 64.3%)	1.2%
Adjuvant with S-1 at 3 years	72.3%	72.2% (95% CI, 67.9 - 76.4%)	0.1%
Adjuvant with XELOX strategy at 3 years	75.0%	74% (95% CI, 69 - 79%)	1.0%
Surgery only at 5 years	51.2%	53.1% (95% CI, 48.7 - 57.4%)	-1.9%
Adjuvant with S-1 at 5 years	64.6%	65.4% (95% CI, 61.2 - 69.5%)	-0.8%
Adjuvant with XELOX strategy at 5 years	67.9%	68%	-0.1%
<b>Overall survival</b>			
Surgery only at 3 years	72.2%	70.1% (95% CI, 65.5 - 74.6%)	2.1%
Adjuvant with S-1 at 3 years	80.4%	80.1% (95% CI, 76.1 - 84.0%)	0.3%
Adjuvant with XELOX strategy at 3 years	80.7%	83% (95% CI, 79 - 87%)	-2.3%
Surgery only at 5 years	60.9%	61.1% (95% CI, 56.8 - 65.3%)	-0.2%
Adjuvant with S-1 at 5 years	71.8%	71.7% (95% CI, 67.8 - 75.7%)	0.1%
Adjuvant with XELOX strategy at 5 years	72.1%	78%	-5.9%



**Figure 2** Calibration curve for RFS and OS.

accounting for a range of cost-per-QALY thresholds (Figure 6). The CEAC plot demonstrated that the XELOX strategy could achieve nearly two-thirds the likelihood of cost-effectiveness when the threshold level was the per capita GDP of China in 2012 (\$6,100).

### Discussion

The current analysis is the first to evaluate the health and economic outcomes of different adjuvant regimens in gastric cancer patients treated with D2 gastrectomy. We determined that adjuvant therapies provide substantial health benefits relative to surgery only by increasing the QALYs (Table 4). This increase in QALYs, in turn, could be contributed to improvements in the RFS and OS rates [2,23]. The total costs associated with the use of adjuvant chemotherapy for the S-1 and XELOX strategies were \$24,503.1 and \$18,379.6, respectively, both of which are significantly higher than the cost of surgery only (\$13,638.2). However, our cost-effectiveness analysis revealed that the ICERs of the S-1 and XELOX strategies

versus the Surgery only strategy are \$6,837 and \$ 3,502, respectively, per additional QALY gained. According to the WHO recommendation for the cost-effectiveness threshold, both adjuvant strategies are cost-effective because their ICERs are lower than the threshold of \$18,300 per additional QALY gained (which represents three times the per capita GDP of China in 2012) [34-36]. In particular, the ICER of the XELOX strategy in the base-case analysis was less than one times the per capita GDP of China in 2012, indicating that adjuvant therapy with the XELOX strategy would be very cost-effective in the Chinese setting based on the WHO recommendation.

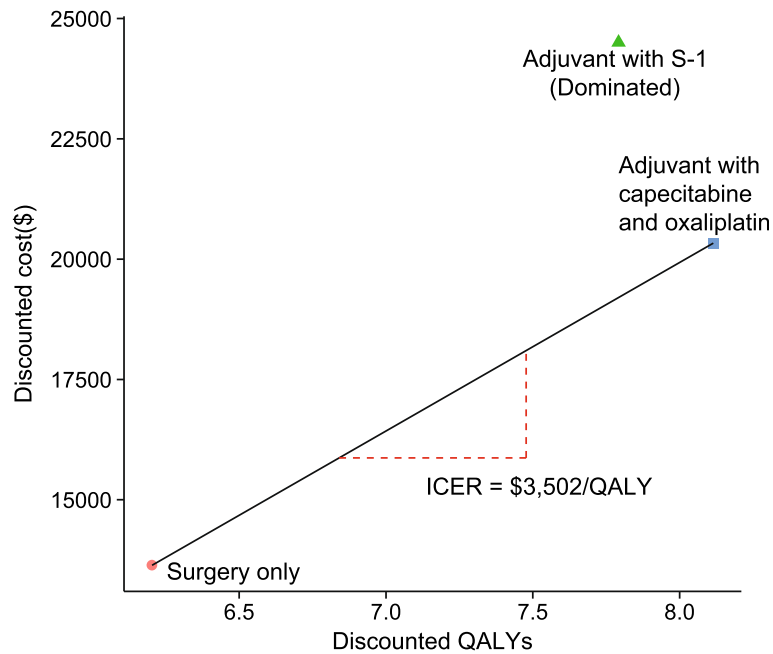
As shown in Table 4 and Figure 3, the XELOX strategy may provide greater health benefits and relatively lower costs compared with the S-1 strategy, indicating that the S-1 strategy would be dominant. These results were further confirmed by probabilistic sensitivity analyses and cost-effectiveness acceptability curves (see Figures 5 and 6).

Only three other economic analyses of adjuvant chemotherapy for the treatment of patients with stage II-III B gastric cancer with D2 gastrectomy have been conducted, all in Japanese or Chinese settings [37-39]. These reports determined that adjuvant chemotherapy with S-1 or capecitabine plus oxaliplatin after D2 gastrectomy for patients with resectable gastric cancer was a favorable recommendation in accordance with long-term cost-effectiveness compared with D2 gastrectomy alone. On the basis of the current clinical trial and from the perspective of the Chinese healthcare system, the results of these studies are consistent with ours. However, the result reported by Tan *C et al.* suggest that adjuvant treatment with XELOX strategy is a cost-saving strategy over the long term, despite the higher total cost of the XELOX strategy compared with that of surgery alone.

**Table 4** Summary of cost and outcome results in the base-case analysis

Strategy	Surgery only	Adjuvant S-1	Adjuvant XELOX
Cost of relapse-free state	445.8	14,776.3	13,468.3
Cost of disease recurrent state	12,248.6	8,984.7	6,166.6
Cost of death from gastric cancer	1,174.8	1,101.4	1,091.7
Total cost (\$)	13,638.2	24,503.1	20,331.6
QALYs	8.1	10.8	11.5
Incremental cost per QALY*		6,837	3,502

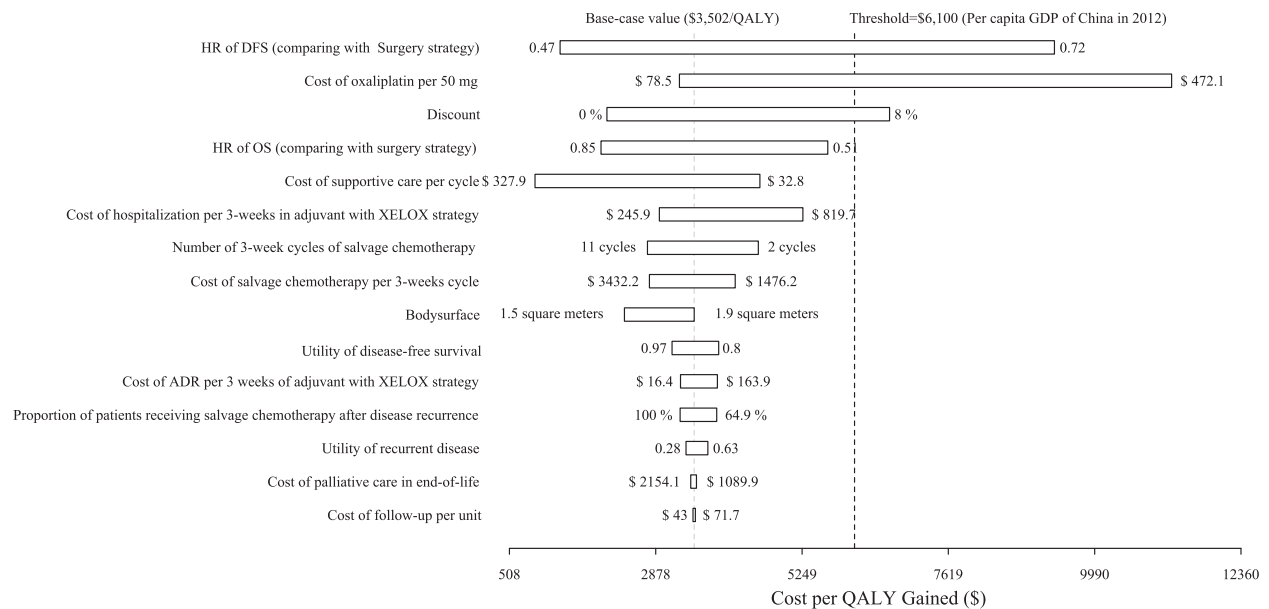
Key: "\*" compared with Surgery only.



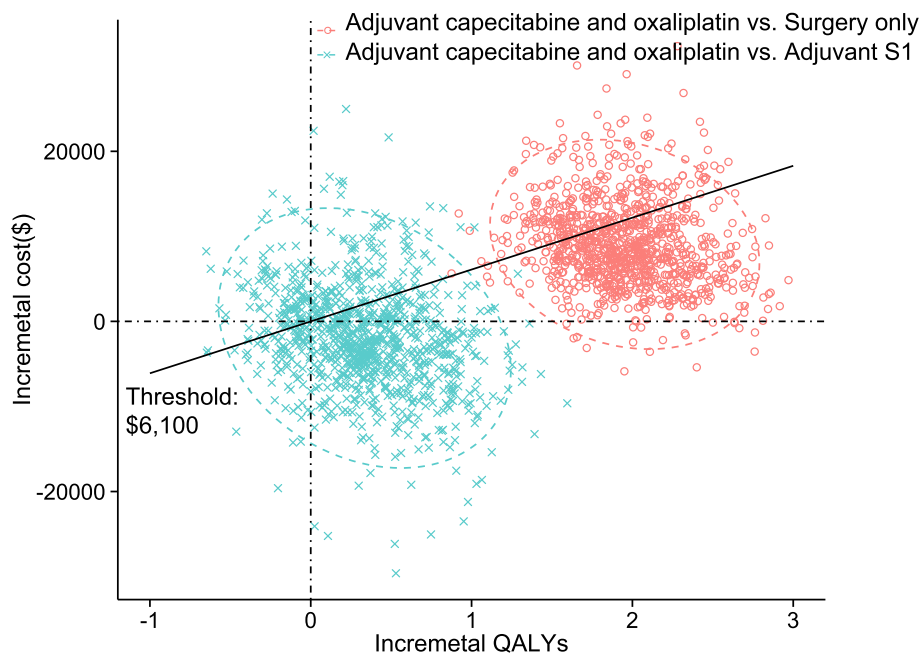
**Figure 3 The cost-effectiveness of strategies for gastric cancer patients.** The oblique line connects surgery only and the most cost-effective strategies. Strategies above the horizontal lines were dominated or extended dominated. In the cost-effective plane, the values of the most incremental cost-effectiveness ratios (ICER) are shown.

Tan *C et al.* determined that the total costs of the surgery-only strategy were \$87,004 and \$65,894, respectively, far higher than our evaluation (\$13,638.2) and the finding (\$9,346) reported by Hisashige *A et al.* [37-39]. This discrepancy may be due to the considerable assumption

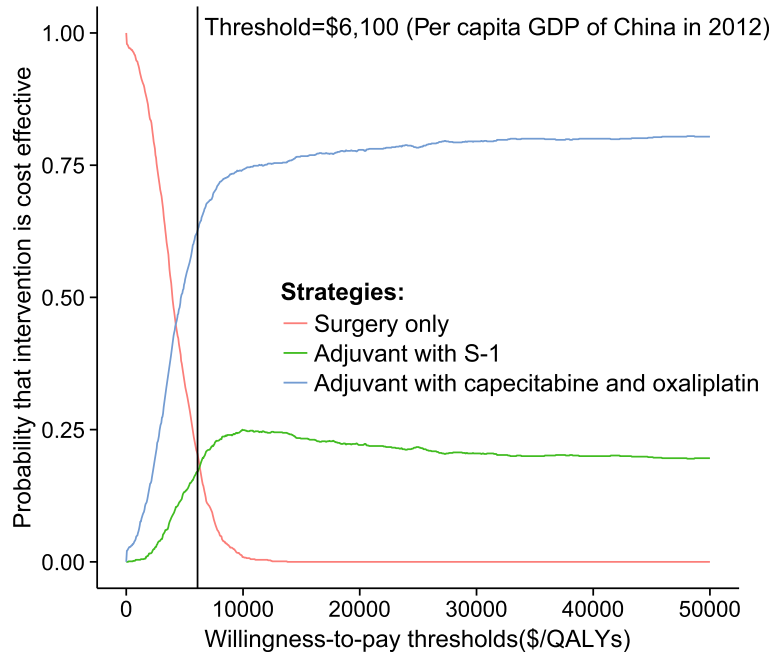
made by Tan *C et al.* that in the situation of tumor recurrence or new occurrences of gastric cancer, cycles of intravenous paclitaxel (at 80 mg/m<sup>2</sup>, three times per week) would be administered every 4 weeks as a first-line chemotherapy for advanced gastric cancer [37,38]. However,



**Figure 4 A tornado diagram representing the net health benefits (in QALYs with WTP = \$6,100).** The diagram was determined by a one-way sensitivity analysis of the XELOX strategy vs. surgery only for patients presenting with gastric cancer. The vertical line represents the base-case value for the net health benefit with WTP = \$6,100. Key: RFS (relapse-free survival); OS (overall survival); HR (hazard ratio).



**Figure 5** The probabilistic results of the incremental cost-effectiveness difference. The XELOX, S-1, and surgery-only strategies were compared. The y-axis represents the incremental costs. The x-axis represents the incremental QALYs gained. The ellipses surround 95% of the estimates. The dots below the ICER threshold (the oblique lines) reflect simulations in which the cost per additional QALY gained for the XELOX strategy was below the ICER threshold.



**Figure 6** The cost-effectiveness acceptability curves for the three strategies. The y-axis indicates the probability that a strategy is cost-effective across the WTP per QALY gained threshold (x-axis). The bold vertical dashed line represents the threshold for China.



according to the gastric cancer guidelines of the National Comprehensive Cancer Network, clinical trials and our assumptions in previous work, paclitaxel (80 mg/m<sup>2</sup>) is administered as a second-line chemotherapy for advanced gastric cancer and is repeated weekly for 3 of every 4 weeks [12,40,41].

As reported by Tan *C et al.* the cost of oxaliplatin per 50 mg is a substantial consideration [37]. When brand-name oxaliplatin (Eloxatin®, produced by Sanofi-Aventis) was used in the XELOX strategy, the ICER of the XELOX strategy increased to \$10,469 per additional QALY gained. The cost of generic oxaliplatin is only one-quarter that of brand-name oxaliplatin, and the generic is now widely accepted and prescribed in Chinese clinical practice. Although the sensitivity analysis indicated that the XELOX strategy was cost-effective (using brand-name oxaliplatin), we suggest the use of generic oxaliplatin to further conserve limited healthcare resources. Another important influential factor was RFS, which would improve the ICER of the XELOX strategy by decreasing the HR. This finding indicates that it is more cost-effective to treat subgroups with more favorable prognostic factors, such as nodal status 1 or 2, with the XELOX strategy compared with the Surgery strategy [23]. The cost-effectiveness threshold of \$18,300/QALY was robust and revealed that treatment with an adjuvant therapy using the XELOX strategy was cost-effective.

The results of this analysis must be interpreted carefully within the limitations of the data and study design. First, we used a two-parameter Weibull survival model to extend the tails of survival beyond the follow-up time horizon [42]. Table 3 and Figure 2 show the estimated survival rates fitted to the nonparametric Kaplan-Meier survival rates from the trials, which support the validity of our model. However, there are no long-term (>5 years) RFS and OS data available for patients receiving adjuvant chemotherapy, which could influence the results. Although one-way sensitivity analyses were conducted to evaluate the uncertainty in model outcomes arising from the parameters, this lack of long-term data represents another limitation of our research approach. The current analysis must be updated when long-term outcomes are reported. Second, new therapies are rapidly being developed for managing gastric cancer, including treatment with trastuzumab for HER2-positive gastric cancer; this approach improved the survival of patients with HER2-positive advanced gastric or gastro-esophageal junction cancer [43]. However, these new agents tend to be more expensive than current therapies. Although the current analysis could not trace all medical resources associated with potential new agents in the future, the findings from the one-way sensitivity analyses indicate that the ICER of adjuvant chemotherapy would be improved by increased resource utilization after disease relapse. Third,

owing to the absence of head-to-head trials for both of the adjuvant strategies for the adjuvant therapy of gastric cancer patients following D2 gastrectomy compared in this study, an indirect comparison was conducted, another inevitable weakness of the present analysis. The patient characteristics in the CLASSIC trial and in the trial reported by the ACTS-GC Group were assumed to be similar in our indirect comparisons, and the results of the indirect comparison were imputed into the analytical model. Nevertheless, as no data directly comparing the effectiveness of the S-1 and XELOX strategies in large RCTs are available, many investigators worldwide accept indirect comparisons using robust methods. Further studies will be required to directly determine the clinical efficacy of these adjuvant strategies. Fourth, because of the absence of RFS data in the CLASSIC trial, we replaced the RFS data with DFS data to compare the outcomes of the XELOX and S-1 strategies. It could be inferred that the XELOX strategy would have more a favorable RFS than the S-1 strategy because there are more DFS than RFS events; events such as the development of a second primary cancer would lead to more favorable economic outcome [44]. Fifth, the results of this analysis should be carefully interpreted because several factors such as the costs associated with death, the patterns of clinical practice and the availability of health care resources limit the transferability of economic evaluations across jurisdictions. Finally, owing to the nature of the study design, we did not measure exact costs, such as the costs associated with adverse events and palliative care. A cost-of-illness study should be conducted in the future. We believe that our results have theoretical and reference value and provide valuable policy-making data to guide the allocation of health resources in China.

## Conclusions

Taken together, our results indicate that adjuvant therapy with the S-1 or XELOX strategy is a cost-effective option for gastric cancer after D2 gastrectomy and that the XELOX strategy is potentially a very cost-effective alternative to the S-1 strategy or surgery alone, particularly when generic oxaliplatin is used.

## Competing interests

The authors declare that they have no competing interests.

## Authors' contributions

WB and ZG adapted the model, conducted the analyses, interpreted the results and wrote the manuscript. Dr. LT, JC and YX contributed to data collection and manuscript preparation. Dr. ZG supervised the study, contributed to the interpretation of the results, reviewed the manuscript and is the guarantor of the overall content. All authors read and approved the final manuscript.

#### Sources of financial support

This work was supported by the Key Discipline and Specialty Foundation of the Shanghai Municipal Commission of Health and Family Planning (Grant No. 2012ZDXK003) and partly supported by grants from the Shanghai Municipal Commission of Health and Family Planning (NO. 2011241) and the Shanghai Science and Technology Committee (NO.13ZR1425200). The funders had no role in the design of the study, collection and analysis of data, decision to publish, or preparation of the manuscript.

#### Author details

<sup>1</sup>Department of Pharmacy, Ren Ji Hospital, School of Medicine, Shanghai Jiao Tong University, Shanghai, China. <sup>2</sup>Department of Pharmacy, Yuxi People's Hospital, affiliated with the Kunming Medical College, Nieer Road 21, Yuxi, China. <sup>3</sup>Department of Clinical Oncology, Taixing People's Hospital, affiliated with the School of Medicine, Yangzhou University, Changzheng Road 1, Taixing, China. <sup>4</sup>Department of Clinical Oncology, the Second Hospital of Nanjing, affiliated with the Medical School of South East University, Zhongfu Road 1, Nanjing, China. <sup>5</sup>Department of General Surgery, Ren Ji Hospital, School of Medicine, Shanghai Jiao Tong University, Shanghai, China.

Received: 17 January 2014 Accepted: 10 December 2014

Published: 19 December 2014

#### References

- Jemal A, Bray F, Center MM, Ferlay J, Ward E, Forman D: **Global cancer statistics.** *CA Cancer J Clin* 2011, **61**(2):69–90.
- Sasako M, Sakuramoto S, Katai H, Kinoshita T, Furukawa H, Yamaguchi T, Nashimoto A, Fujii M, Nakajima T, Ohashi Y: **Five-year outcomes of a randomized phase III trial comparing adjuvant chemotherapy with S-1 versus surgery alone in stage II or III gastric cancer.** *J Clin Oncol* 2011, **29**(33):4387–4393.
- Matsuda T, Marugame T, Kamo K, Katanoda K, Ajiki W, Sobue T: **Cancer incidence and incidence rates in Japan in 2006: based on data from 15 population-based cancer registries in the monitoring of cancer incidence in Japan (MCIJ) project.** *Jpn J Clin Oncol* 2012, **42**(2):139–147.
- Ahn JY, Jung HY, Choi JY, Kim MY, Lee JH, Choi KS, Kim DH, Choi KD, Song HJ, Lee GH, Kim JH, Park YS: **Natural course of noncurative endoscopic resection of differentiated early gastric cancer.** *Endoscopy* 2012, **44**(12):1114–1120.
- Songun I, Putter H, Kranenbarg EM, Sasako M, van de Velde CJ: **Surgical treatment of gastric cancer: 15-year follow-up results of the randomised nationwide Dutch D1D2 trial.** *Lancet Oncol* 2010, **11**(5):439–449.
- Wu CW, Hsiung CA, Lo SS, Hsieh MC, Chen JH, Li AF, Lui WY, Whang-Peng J: **Nodal dissection for patients with gastric cancer: a randomised controlled trial.** *Lancet Oncol* 2006, **7**(4):309–315.
- Meyer HJ, Wilke H: **Treatment strategies in gastric cancer.** *Dtsch Arztebl Int* 2011, **108**(41):698–705. quiz 706.
- Yonemura Y, Wu CC, Fukushima N, Honda I, Bandou E, Kawamura T, Kamata T, Kim BS, Matsuki N, Sawa T, Noh SH, East Asia Surgical Oncology G: **Randomized clinical trial of D2 and extended paraaortic lymphadenectomy in patients with gastric cancer.** *Int J Clin Oncol* 2008, **13**(2):132–137.
- Group G, Paoletti X, Oba K, Burzykowski T, Michiels S, Ohashi Y, Pignon JP, Rougier P, Sakamoto J, Sargent D, Sasako M, Van Cutsem E, Buyse M: **Benefit of adjuvant chemotherapy for resectable gastric cancer: a meta-analysis.** *Jama* 2010, **303**(17):1729–1737.
- Sakuramoto S, Sasako M, Yamaguchi T, Kinoshita T, Fujii M, Nashimoto A, Furukawa H, Nakajima T, Ohashi Y, Imamura H, Higashino M, Yamamura Y, Kurita A, Arai K, Group A-G: **Adjuvant chemotherapy for gastric cancer with S-1, an oral fluoropyrimidine.** *N Engl J Med* 2007, **357**(18):1810–1820.
- Bang YJ: **Adjuvant chemotherapy: an option for Asian patients only?** *Recent Results Cancer Res* 2012, **196**:291–305.
- National Comprehensive Cancer Network: **NCCN clinical practice guidelines in oncology: gastric cancer guideline 2013 V2 (English).** [http://www.nccn.org/professionals/physician\\_gls/pdf/gastric.pdf](http://www.nccn.org/professionals/physician_gls/pdf/gastric.pdf). Accessed 10 July 2013.
- Iwata H, Fujii H, Masuda N, Mukai H, Nishimura Y, Katsura K, Ellis CE, Gagnon RC, Nakamura S: **Efficacy, safety, pharmacokinetics and biomarker findings in patients with HER2-positive advanced or metastatic breast cancer treated with lapatinib in combination with capecitabine: results from 51 Japanese patients treated in a clinical study.** *Breast Cancer* 2013, May 21. [Epub ahead of print].
- Dellas K, Hohler T, Reese T, Wurschmidt F, Engel E, Rodel C, Wagner W, Richter M, Arnold D, Dunst J: **Phase II trial of preoperative radiochemotherapy with concurrent bevacizumab, capecitabine and oxaliplatin in patients with locally advanced rectal cancer.** *Radiat Oncol* 2013, **8**(1):90.
- Gupta S, Khan H, Barik S, Negi MP: **Clinical benefits of concurrent capecitabine and cisplatin versus concurrent cisplatin and 5-fluorouracil in locally advanced squamous cell head and neck cancer.** *Drug Discov Ther* 2013, **7**(1):36–42.
- Oh DY, Bang YJ: **Adjuvant and neoadjuvant therapy for gastric cancer.** *Curr Treat Options Oncol* 2013, **14**(3):311–320.
- Shirasaka T, Shimamoto Y, Ohshimo H, Yamaguchi M, Kato T, Yonekura K, Fukushima M: **Development of a novel form of an oral 5-fluorouracil derivative (S-1) directed to the potentiation of the tumor selective cytotoxicity of 5-fluorouracil by two biochemical modulators.** *Anticancer Drugs* 1996, **7**(5):548–557.
- Diasio RB: **Clinical implications of dihydropyrimidine dehydrogenase inhibition.** *Oncology (Williston Park)* 1999, **13**(7 Suppl 3):17–21.
- Macdonald JS, Smalley SR, Benedetti J, Hundahl SA, Estes NC, Stemmermann GN, Haller DG, Ajani JA, Gunderson LL, Jessup JM, Martenson JA: **Chemoradiotherapy after surgery compared with surgery alone for adenocarcinoma of the stomach or gastroesophageal junction.** *N Engl J Med* 2001, **345**(10):725–730.
- Cunningham D, Allum WH, Stenning SP, Thompson JN, Van de Velde CJ, Nicolson M, Scarffe JH, Lofts FJ, Falk SJ, Iveson TJ, Smith DB, Langley RE, Verma M, Weeden S, Chua YJ, Participants MT: **Perioperative chemotherapy versus surgery alone for resectable gastroesophageal cancer.** *N Engl J Med* 2006, **355**(1):11–20.
- Jatoi A, Murphy BR, Foster NR, Nikkevich DA, Alberts SR, Knost JA, Fitch TR, Rowland KM Jr: **Oxaliplatin and capecitabine in patients with metastatic adenocarcinoma of the esophagus, gastroesophageal junction and gastric cardia: a phase II study from the North Central Cancer Treatment Group.** *Ann Oncol* 2006, **17**(1):29–34.
- Wagstaff A, Yip W, Lindelow M, Hsiao WC: **China's health system and its reform: a review of recent studies.** *Health Econ* 2009, **18**(Suppl 2):S7–S23.
- Bang YJ, Kim YW, Yang HK, Chung HC, Park YK, Lee KH, Lee KW, Kim YH, Noh SI, Cho JY, Mok YJ, Kim YH, Ji J, Yeh TS, Button P, Sirzen F, Noh SH, investigators Ct: **Adjuvant capecitabine and oxaliplatin for gastric cancer after D2 gastrectomy (CLASSIC): a phase 3 open-label, randomised controlled trial.** *Lancet* 2012, **379**(9813):315–321.
- Bonenkamp JJ, Songun I, Hermans J, Sasako M, Welvaart K, Plukker JT, van Elk P, Obertop H, Gouma DJ, Taat CW, van Lanschot J, Meyer S, de Graaf PW, von Meyenfeldt MF, Tilanus H: **Randomised comparison of morbidity after D1 and D2 dissection for gastric cancer in 996 Dutch patients.** *Lancet* 1995, **345**(8952):745–748.
- Moon YW, Rha SY, Jeung HC, Kim C, Hong MH, Chang H, Roh JK, Noh SH, Kim BS, Chung HC: **Outcomes of multiple salvage chemotherapy for advanced gastric cancer: implications for clinical practice and trial design.** *Cancer Chemother Pharmacol* 2010, **66**(4):797–805.
- Barbui C, Dua T, van Ommeren M, Yasamy MT, Fleischmann A, Clark N, Thornicroft G, Hill S, Saxena S: **Challenges in developing evidence-based recommendations using the GRADE approach: the case of mental, neurological, and substance use disorders.** *PLoS Med* 2010, **7**(8):e1000322.
- Noh SH, Park SR, Yang H-K, Chung HC, Chung I-J, Lee KH, Kim H-H, Ji J, Chen J-S, Lim Y, Ha S, Bang Y-J: **O-0007adjuvant capecitabine and Oxaliplatin (xelox) for gastric cancer after D2 gastrectomy: final results from the classic trial.** *Annals of Oncology* 2013, **24**(suppl 4):iv14.
- Hoyle M, Green C, Thompson-Coon J, Liu Z, Welch K, Moxham T, Stein K: **Cost-effectiveness of temsirolimus for first line treatment of advanced renal cell carcinoma.** *Value Health* 2010, **13**(1):61–68.
- Life tables for WHO Member States: [http://www.who.int/healthinfo/statistics/mortality\\_life\\_tables/en/](http://www.who.int/healthinfo/statistics/mortality_life_tables/en/). Accessed 2012 September 18.
- National Development and Reform Commission: <http://www.ndrc.gov.cn/>. Accessed 2013 July 16.
- He J, Wen F, Yin X, Zhang P, Du Z, He X, Zhou Y, Tang R, Li M, Li Q: **Cost analysis of S1 and XELOX as adjuvant therapy for gastric cancer.** *Anticancer Drugs* 2013, **24**(7):754–758.
- Wu B, Dong B, Xu Y, Zhang Q, Shen J, Chen H, Xue W: **Economic evaluation of first-line treatments for metastatic renal cell carcinoma: a cost-effectiveness analysis in a health resource-limited setting.** *PLoS One* 2012, **7**(3):e32530.

33. Redelmeier DA, Detsky AS: A clinician's guide to utility measurement. *Prim Care* 1995, **22**(2):271–280.
34. List of Chinese Administrative Divisions by GDP per Capita; [http://en.wikipedia.org/wiki/List\\_of\\_Chinese\\_administrative\\_divisions\\_by\\_GDP\\_per\\_capita](http://en.wikipedia.org/wiki/List_of_Chinese_administrative_divisions_by_GDP_per_capita). Accessed October 28, 2011.
35. Eichler HG, Kong SX, Gerth WC, Mavros P, Jonsson B: Use of cost-effectiveness analysis in health-care resource allocation decision-making: how are cost-effectiveness thresholds expected to emerge? *Value Health* 2004, **7**(5):518–528.
36. Murray CJ, Evans DB, Acharya A, Baltussen RM: Development of WHO guidelines on generalized cost-effectiveness analysis. *Health Econ* 2000, **9**(3):235–251.
37. Chongqing T, Liubao P, Xiaohui Z, Jianhe L, Xiaomin W, Gannong C, Siying W, Lihui O, Ziyang Z: Cost-utility analysis of the newly recommended adjuvant chemotherapy for resectable gastric cancer patients in the 2011 Chinese national comprehensive cancer network (NCCN) clinical practice guidelines in oncology: gastric cancer. *Pharmacoeconomics* 2014, **32**(3):235–243.
38. Tan C, Peng L, Zeng X, Li J, Wan X, Chen G, Yi L, Luo X, Zhao Z: Economic evaluation of first-line adjuvant chemotherapies for resectable gastric cancer patients in china. *PLoS One* 2013, **8**(12):e83396.
39. Hisashige A, Sasako M, Nakajima T: Cost-effectiveness of adjuvant chemotherapy for curatively resected gastric cancer with S-1. *BMC Cancer* 2013, **13**:443.
40. Ando T, Hosokawa A, Kajiuura S, Itaya Y, Ueda A, Fujinami H, Nishikawa J, Kobayashi T, Horikawa N, Tsukioka Y, Yabushita K, Note M, Ogawa K, Sugiyama T: Efficacy of weekly paclitaxel in patients with advanced gastric cancer refractory to docetaxel-based chemotherapy. *Gastric Cancer* 2012, **15**(4):427–432.
41. Wu B, Ye M, Chen H, Shen JF: Costs of Trastuzumab in combination with chemotherapy for HER2-positive advanced gastric or gastroesophageal junction cancer: an economic evaluation in the Chinese context. *Clin Ther* 2012, **34**(2):468–479.
42. Wilson DL: The analysis of survival (mortality) data: fitting Gompertz, Weibull, and logistic functions. *Mech Ageing Dev* 1994, **74**(1–2):15–33.
43. Bang YJ, Van Cutsem E, Feyereislova A, Chung HC, Shen L, Sawaki A, Lordick F, Ohtsu A, Omuro Y, Satoh T, Aprile G, Kulikov E, Hill J, Lehle M, Ruschoff J, Kang YK: Trastuzumab in combination with chemotherapy versus chemotherapy alone for treatment of HER2-positive advanced gastric or gastro-oesophageal junction cancer (ToGA): a phase 3, open-label, randomised controlled trial. *Lancet* 2010, **376**(9742):687–697.
44. Birgisson H, Wallin U, Holmberg L, Glimelius B: Survival endpoints in colorectal cancer and the effect of second primary other cancer on disease free survival. *BMC Cancer* 2011, **11**:438.

doi:10.1186/1471-2407-14-984

Cite this article as: Wu et al.: Cost-effectiveness analysis of adjuvant chemotherapies in patients presenting with gastric cancer after D2 gastrectomy. *BMC Cancer* 2014 **14**:984.

Submit your next manuscript to BioMed Central and take full advantage of:

- Convenient online submission
- Thorough peer review
- No space constraints or color figure charges
- Immediate publication on acceptance
- Inclusion in PubMed, CAS, Scopus and Google Scholar
- Research which is freely available for redistribution

Submit your manuscript at  
[www.biomedcentral.com/submit](http://www.biomedcentral.com/submit)

