

RESEARCH ARTICLE

Open Access

Human cancer cells express Slug-based epithelial-mesenchymal transition gene expression signature obtained *in vivo*

Dimitris Anastassiou^{2,6*}, Viktoria Rumjantseva⁶, Weiyi Cheng^{2,6}, Jianzhong Huang⁶, Peter D Canoll³, Darrell J Yamashiro^{1,3,5†} and Jessica J Kandel^{1,4,5*†}

Abstract

Background: The biological mechanisms underlying cancer cell motility and invasiveness remain unclear, although it has been hypothesized that they involve some type of epithelial-mesenchymal transition (EMT).

Methods: We used xenograft models of human cancer cells in immunocompromised mice, profiling the harvested tumors separately with species-specific probes and computationally analyzing the results.

Results: Here we show that human cancer cells express *in vivo* a precise multi-cancer invasion-associated gene expression signature that prominently includes many EMT markers, among them the transcription factor Slug, fibronectin, and α -SMA. We found that human, but not mouse, cells express the signature and Slug is the only upregulated EMT-inducing transcription factor. The signature is also present in samples from many publicly available cancer gene expression datasets, suggesting that it is produced by the cancer cells themselves in multiple cancer types, including nonepithelial cancers such as neuroblastoma. Furthermore, we found that the presence of the signature in human xenografted cells was associated with a downregulation of adipocyte markers in the mouse tissue adjacent to the invasive tumor, suggesting that the signature is triggered by contextual microenvironmental interactions when the cancer cells encounter adipocytes, as previously reported.

Conclusions: The known, precise and consistent gene composition of this cancer mesenchymal transition signature, particularly when combined with simultaneous analysis of the adjacent microenvironment, provides unique opportunities for shedding light on the underlying mechanisms of cancer invasiveness as well as identifying potential diagnostic markers and targets for metastasis-inhibiting therapeutics.

Keywords: Epithelial-mesenchymal transition, Cancer stem cells, Cancer invasiveness

Background

It has been hypothesized [1-3] that cancer cells become invasive and migratory by undergoing some type of epithelial-mesenchymal transition (EMT) reactivating early embryogenesis programs. Each type of EMT is assumed to be orchestrated by different unknown combinations of multiple interacting transcription factors and signaling pathways. A set of genes comprising an “EMT core signature” was recently derived [4] after triggering

EMTs in different ways and observing the resulting shared changes in gene expression. However, the details of the specific types of EMT associated with cancer invasion remain elusive and complicated by the difficulty of detecting signs of EMT in human cancer cells, and the topic remains controversial.

A multi-cancer gene expression signature involving a large set of genes, several among them being EMT markers coordinately overexpressed only in a subset of malignant samples that have exceeded a particular staging threshold specific to each cancer type was recently identified [5]. The signature is present in numerous publicly available datasets from multiple cancer types from all solid tumor types that we tried, including nonepithelial

* Correspondence: da8@columbia.edu; jjk47@columbia.edu

† Contributed equally

¹Institute for Cancer Genetics, Columbia University, New York, NY, USA

²Center for Computational Biology and Bioinformatics, Columbia University, New York, NY, USA

Full list of author information is available at the end of the article

cancers such as neuroblastoma and Ewing's sarcoma but not in leukemia. Examples of heat maps are shown for breast [see Additional file 1], colon [see Additional file 2], Ewing's sarcoma [see Additional file 3], lung [see Additional file 4], ovarian [see Additional file 5], neuroblastoma [see Additional file 6] and leukemia [see Additional file 7], demonstrating the remarkable co-expression of the genes in solid tumors. Among the overexpressed genes are the EMT inducing transcription factor Slug (SNAI2), various collagens and proteinases, α -SMA, fibronectin, fibroblast activation protein, and many extracellular matrix glycoproteins, suggesting a fibroblastic nature after passing through a Slug-based EMT.

The signature, however, has its own special characteristics, one of which is that the strongly co-expressed genes *COL11A1*, *THBS2* and *INHBA* have a prominent presence. Collagen *COL11A1* was found to be a reliable proxy for the signature: in each solid tumor dataset that we tried, the list of genes whose expression is most highly correlated (using measures such as mutual information [6] or Pearson correlation) with that of *COL11A1* consistently includes the other genes of the signature at the top, with the only exception of glioblastoma in which *COL11A1* is not as prominently co-expressed with the other genes, though the signature is still present otherwise. Notably, E cadherin (*CDH1*) is not downregulated at least at the mRNA level. Furthermore, the signature contains numerous other EMT associated genes. Table 1 identifies the known EMT markers among the list of the 64 genes corresponding to the 100 most overexpressed probe sets previously reported [5], of the signature. Highlighted by bold typeface among these 64 are 20 known EMT-associated genes, 17 coming from the list of 91 upregulated "EMT core signature" [4] genes (*COL5A2*, *FAP*, *POSTN*, *COL1A2*, *COL3A1*, *FBN1*, *TNFAIP6*, *MMP2*, *GREM1*, *BGN*, *CDH11*, *SPOCK1*, *DCN*, *COPZ2*, *THY1*, *PCOLCE*, *PRRX1*) plus the obvious EMT markers *SNAI2*, *FNI*, *ACTA2*. Four additional genes (underlined but not bold in Table 1), *PDGFRB*, *SPARC*, *INHBA*, *COL6A2*, have also been reported as EMT-related [7], for a total of 24 EMT factors. Even without including these additional seven genes, the *P* value of encountering 17 out of 64 genes taken from the list of the 91 EMT core signature genes is 2×10^{-22} . Therefore, this fibroblastic signature is the result, at least in part, of an EMT.

The initiation of significant signature overexpression after reaching a particular cancer-type-specific stage suggests an underlying biological mechanism associated with cancer invasion. Given the heterogeneity of cells in tumors, it could also reflect the superposition of several mechanisms. Among other possibilities, the fibroblast-like cells producing the signature could be derived from multiple sources, such as the bone marrow, the local stroma, or the cancer cells after undergoing a mesenchymal

Table 1 Top genes overexpressed in the fibroblastic signature (see text for designation with boldface and underline)

Rank	Probe set	Gene	Rank	Probe set	Gene
1	37892_at	COL11A1	33	202998_s_at	LOXL2
2	203083_at	THBS2	34	201438_at	COL6A3
3	217428_s_at	COL10A1	35	209596_at	MXRA5
4	221729_at	COL5A2	36	213764_s_at	MFAP5
5	210511_s_at	<u>INHBA</u>	37	204589_at	NUAK1
6	213909_at	<u>LRRC15</u>	38	217762_s_at	RAB31
7	212488_at	COL5A1	39	201150_s_at	TIMP3
8	204619_s_at	VCAN	40	221541_at	CRISPLD2
9	209955_s_at	FAP	41	205422_s_at	ITGBL1
10	202311_s_at	COL1A1	42	207173_x_at	CDH11
11	203878_s_at	MMP11	43	213338_at	TMEM158
12	210809_s_at	POSTN	44	202363_at	SPOCK1
13	202404_s_at	COL1A2	45	204051_s_at	SFRP4
14	202952_s_at	ADAM12	46	202283_at	SERPINF1
15	215076_s_at	COL3A1	47	209335_at	DCN
16	215446_s_at	LOX	48	219655_at	C7orf10
17	210495_x_at	FN1	49	219561_at	COPZ2
18	201792_at	AEBP1	50	219773_at	NOX4
19	212353_at	SULF1	51	204464_s_at	EDNRA
20	202766_s_at	FBN1	52	200974_at	ACTA2
21	219087_at	ASPN	53	202273_at	<u>PDGFRB</u>
22	200665_s_at	<u>SPARC</u>	54	61734_at	RCN3
23	202450_s_at	CTSK	55	213139_at	SNAI2
24	206026_s_at	TNFAIP6	56	220988_s_at	C1QTNF3
25	222020_s_at	HNT	57	205713_s_at	COMP
26	206439_at	EPYC	58	201105_at	LGALS1
27	201069_at	MMP2	59	213869_x_at	THY1
28	205479_s_at	PLAU	60	202465_at	PCOLCE
29	218469_at	GREM1	61	209156_s_at	<u>COL6A2</u>
30	201261_x_at	BGN	62	221447_s_at	GLT8D2
31	213125_at	OLFML2B	63	204114_at	NID2
32	201744_s_at	LUM	64	205991_s_at	PRRX1

transition. A fundamental question, therefore, is which among the genes of the signature are expressed by the cancer cells and which are expressed by the adjacent microenvironment.

We also observed that there is a striking similarity [8] between the set of genes in the signature and a subset of the genes that are known to be lower expressed when mouse embryonic fibroblasts are reprogrammed into induced pluripotent stem cells [9]. Because it is known [10] that a mesenchymal-epithelial transition (MET) is part of the reprogramming of mouse fibroblasts into stem cells, we reasoned that, conversely, the signature may correspond to some kind of EMT-related transition

from a stem-like state to a fibroblast-like state used in early embryogenesis. Therefore, we hypothesized that many among the genes in the signature may be expressed by cancer stem cells (CSCs) passing through some type of EMT. Furthermore, because of the prominent presence of inhibin-A (*INHBA*) in the signature, we hypothesized that activin A (*INHBA* dimer) signaling may be responsible for the signature.

To test these two hypotheses and to identify which among the genes of the signature, if any, are expressed by the cancer cells, we used xenograft models implanting human cancer cell lines into NCR nude mice. Since the signature was clearly found in neuroblastoma [see Additional file 6], in which we already had successful experience of xenograft experimentation, we used a neuroblastoma cell line even though it is not strictly an epithelial tumor, as this could shed further light on the complex biological underlying mechanisms. Some of the implanted cancer cell lines were in their original form, some were engineered to express *INHBA*, and some were engineered to express the activin antagonist follistatin (*FST*). Each of the resulting growing tumors was harvested and profiled for gene expression twice using human and mouse microarrays separately. Our results validated the first hypothesis, but not the second: Most of the genes of the signature were found in human, but not mouse, cells, and their presence was independent of any transfections, indicating that activin signaling does not play a causal role.

Specifically, our experiments confirmed that the genes of the signature, *Slug* being prominent among them, are co-expressed across samples to various degrees covering a continuous range of values including some samples with large expression of these genes. This result is consistent with the publicly available cancer gene expression datasets. Figure 1 shows that *Slug* is indeed co-expressed with the key genes *COL11A1* and *THBS2* in various cancer types, but not leukemia. The remarkable continuity of the dots shown in the scatter plots of Figure 1A-C suggests a dynamic and potentially reversible process as the human cancer cells pass through a mesenchymal transition process.

Methods

Tumor implantation

An inoculum of 106 NGP neuroblastoma cells containing FUW-Luciferase plasmid (kindly donated by Dr. Adolfo Ferrando) suspended in 0.1 mL of phosphate-buffered saline (PBS) was injected into the left kidney of 18 mice. The NGP cell line was originally obtained from Garrett Brodeur, Children's Hospital of Philadelphia. All cells were authenticated by short tandem repeat profiling analysis. Some of the implanted cells had previously been stably co-transfected with either *FST*-pReceiver-Lv105 or *INHBA* pReceiver-Lv105 (GeneCopoeia; Rockville, MD).

Seven mice were implanted with *INHBA*-transfected NGP cells, six with *FST* and five with control NGP cells. All mice experiments and breeding were conducted according to protocols approved by the Columbia University IACUC.

Harvesting of specimens

Mice were sacrificed when estimated tumor weight reached 1.5 g followed by collection of contralateral kidney and tumor. Tumor tissue was snap frozen for RNA isolation.

Microarrays and probes preparation

HG-U133A 2.0 (human genome) and 430 A2.0 (mouse genome) Gene Chips (Affymetrix, Santa Clara, CA) were used to investigate gene expression in xenograft tumors. The cRNA probes were synthesized as recommended by Affymetrix, purified using RNeasy and fragmented according to the Affymetrix protocol, and 15 µg of biotinylated cRNA were hybridized to the microarrays. The samples were scanned with Affymetrix Gene Chip Scanner 3000.

RNA isolation and semiquantitative reverse transcription-PCR

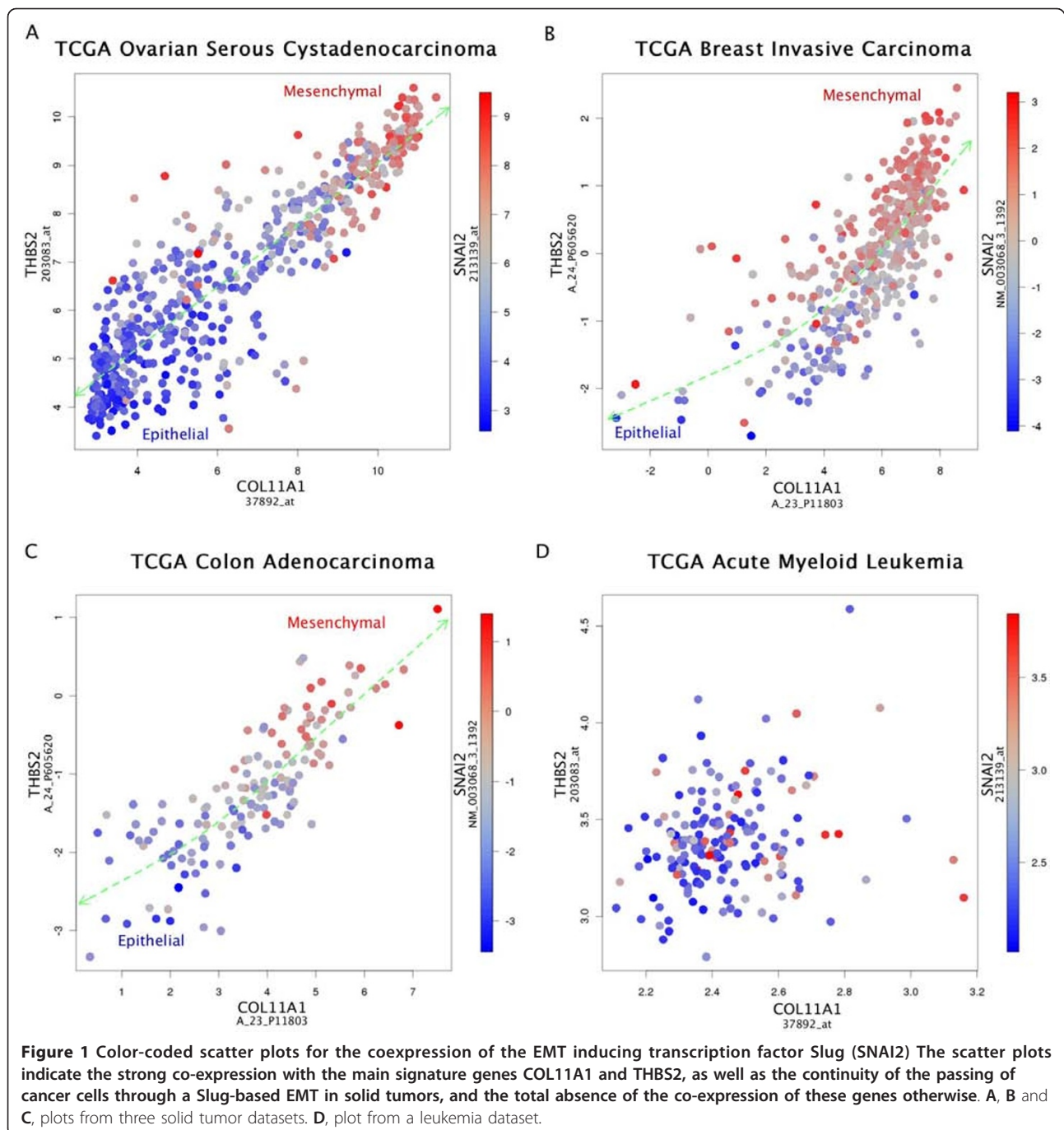
Total RNA was isolated from tumors using Qiagen miR-Neasy mini kit (Qiagen, Germantown, MD) followed by reverse transcription using SuperScript First-Strand synthesis System for RT-PCR from Invitrogen according to manufacture recommendations (Carlsbad, CA, USA). Relative expression of human versus mouse *COL11A1* (Hs00266273_m1, Ms00483387_m1) genes in tumor xenografts were examined by RT-PCR. Products were detected by Hot Start-IT Probe qPCR Master Mix from USB Affymetrix (Santa Clara, CA) according to manufacture instructions and analyzed by Stratagene Mx3005p real time PCR machine. After scanning, expression values for genes were determined using MxPro 410 (Agilent Technologies, Inc., Santa Clara, CA). Human *HPRT*, *CYC*, *GAPD* and mouse *GAPD*, *ACTB*, *GUSB* expression values were used to correct for sample variations in RT-PCR efficiency and errors in quantitation.

Microarray dataset

The data set, corresponding to 18 tumors profiled separately with human and mouse microarrays, has been deposited in NCBI's Gene Expression Omnibus (GEO) and is available through accession number GSE34481. Data were RMA normalized using the Bioconductor open source software.

Differential expression analysis

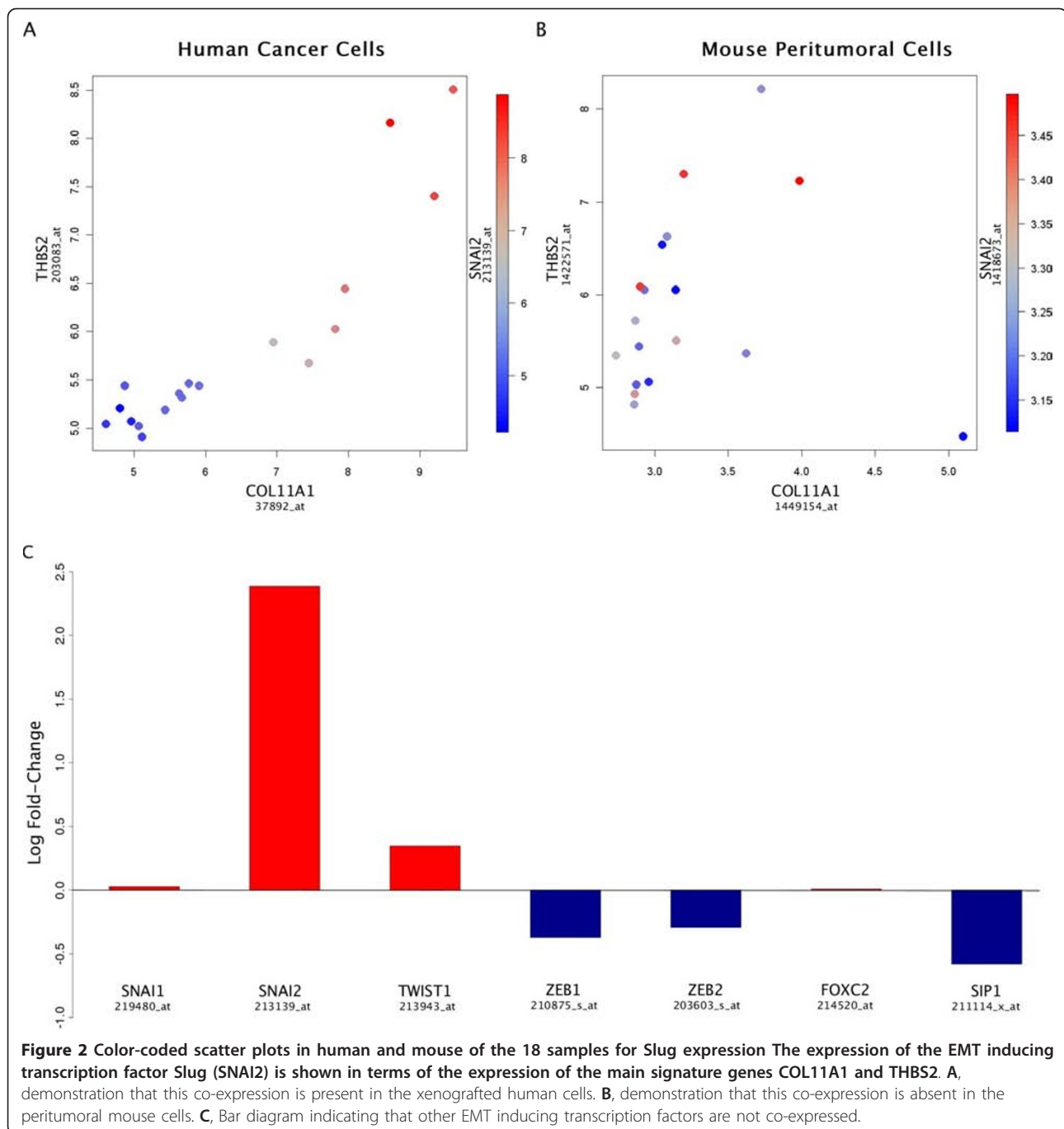
We regrouped the 18 samples, according to the expression level of human *COL11A1*, into seven samples with



high or intermediate COL11A1 expression values, and even with low COL11A1 expression values. Based on this partition, we performed differential expression analysis using significance analysis of microarrays (SAM) [11], implemented in the Bioconductor package samr. We define the significantly differentially expressed gene as those having both a Q value less than 0.05 and a fold-change greater than 2.

Results

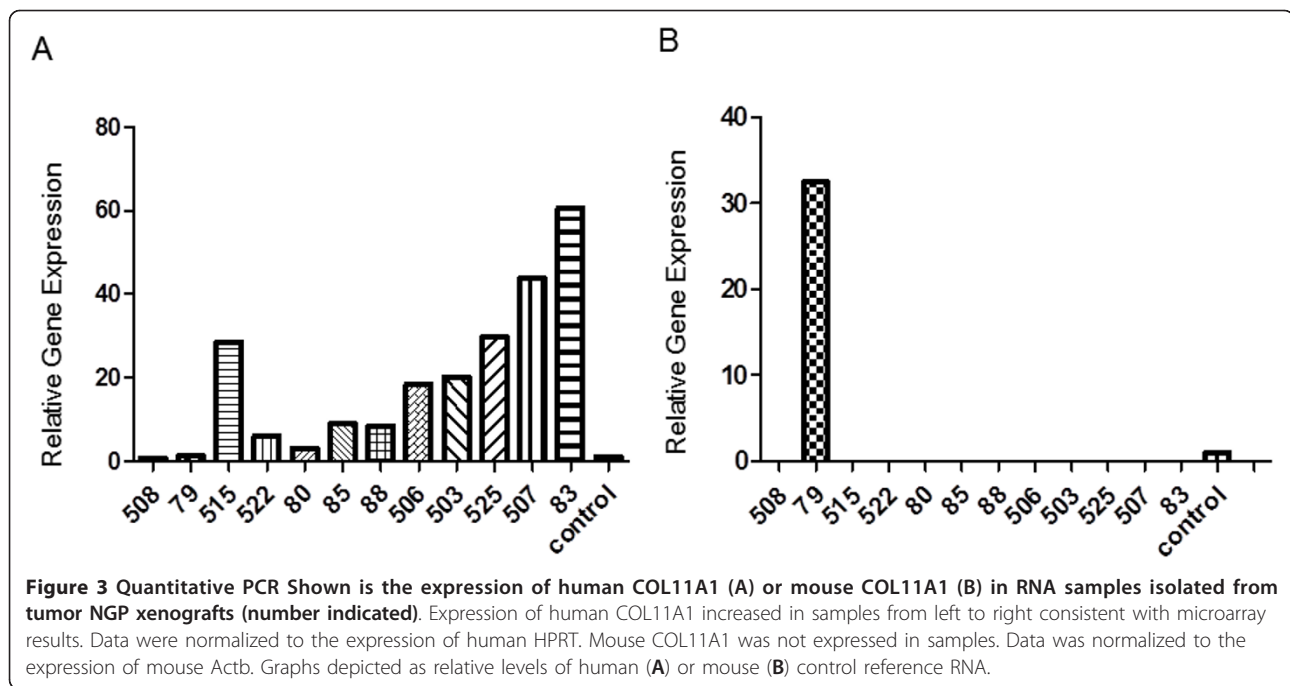
We found very different expression levels (Figure 2) for most genes in human and mouse, suggesting that interspecies hybridization is minimal, as previously reported [12], which was confirmed with real-time PCR (see Materials and Methods and Figure 3). Using COL11A1 as a proxy, we ranked the 18 samples accordingly and investigated if most of the genes in Table 1 were



co-expressed with *COL11A1*. We found that this was indeed the case in human cells only. For example, Figures 2A-B show color-coded scatter plots in human and mouse of the 18 samples for the expression of Slug (*SNAI2*) in terms of the expression of the main genes of the signature, *COL11A1* and *THBS2* (same as in the scatter plots of Figure 1 suggesting an identical biological process) demonstrating that this co-expression is clearly present in the human cells, but absent in the

mouse cells. Specifically, seven samples had high or intermediate levels of co-expressed genes in the human cells, while the remaining 11 have relatively lower levels.

Based on this partition, we identified 398 significantly (both $Q < 0.05$ and $FC > 2$) up-regulated genes, 29 among which (*COL11A1*, *THBS2*, *COL5A2*, *COL5A1*, *VCAN*, *COL1A1*, *COL3A1*, *FN1*, *SULF1*, *FBN1*, *ASPN*, *SPARC*, *CTSK*, *MMP2*, *BGN*, *LUM*, *LOXL2*, *COL6A3*, *TIMP3*, *CDH11*, *SERPINF1*, *EDNRA*, *ACTA2*, *PDGFRB*, *SNAI2*,



LGALS1, *GLT8D2*, *NID2*, *PRRX1*) belong to the set of 64 genes in Table 1 ($P = 10^{-27}$), as well as *VIM* (vimentin). The presence in this list of *SNAI2* (Slug), *ACTA2* (α -SMA), *FNI* (fibronectin), *VIM* (vimentin), together with many of the other EMT markers mentioned above, indicates that some human cancer cells underwent EMT. Other EMT-inducing transcription factors (Snail, Twist, *ZEB1*, *ZEB2*, *SIP1*, *FOXC2*) were not upregulated (Figure 2CC), while the upregulation of *SNAI2* (Figure 2A) was very significant ($Q < 3 \times 10^{-4}$ and $FC = 5.22$).

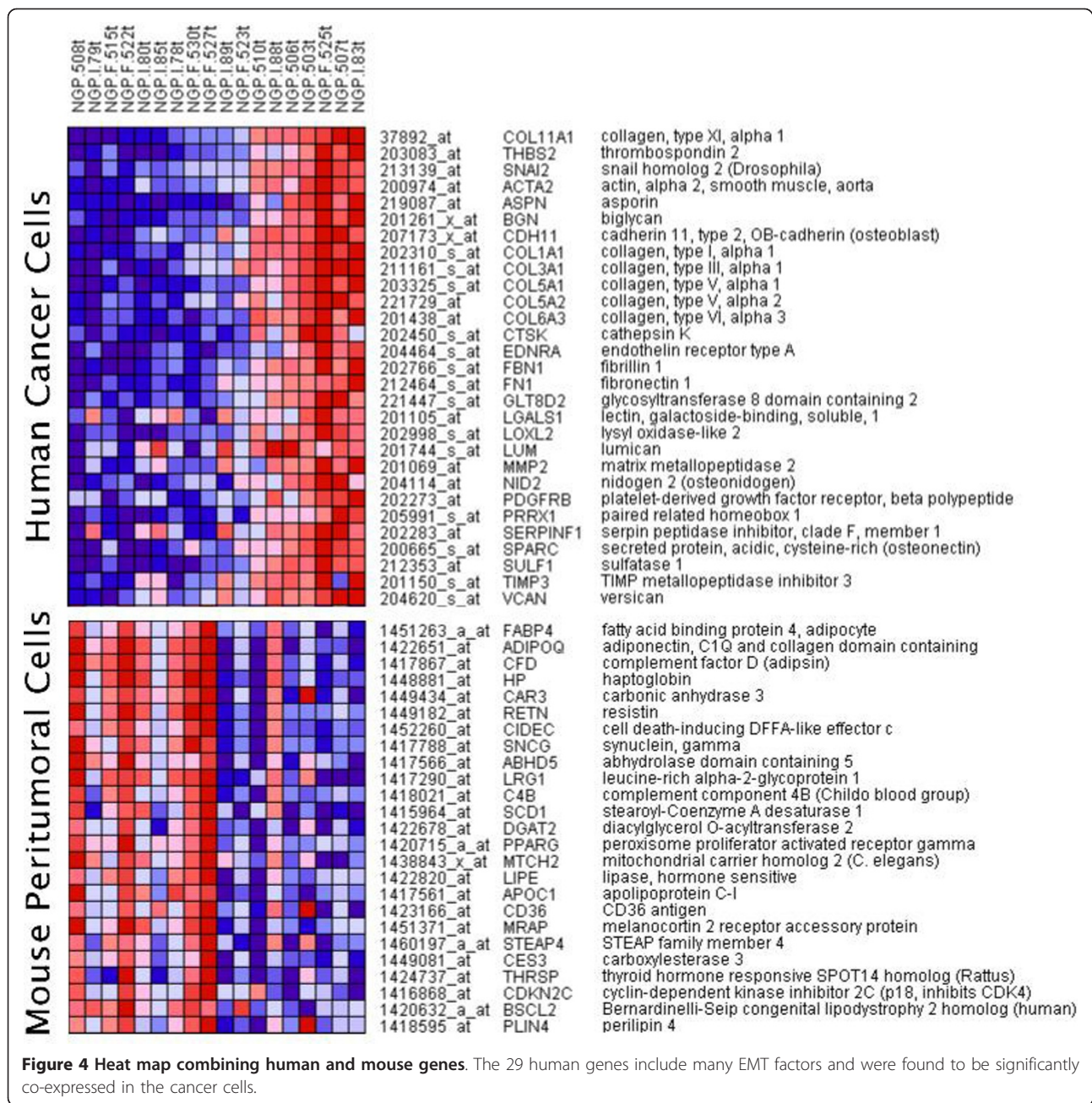
The heat map in Figure 4 shows the co-expression of the above 29 significantly upregulated genes. *INHBA*, the third prominent gene of the signature in addition to *COL11A1* and *THBS2*, is not included in the list, because its expression was manipulated by the transfections with consistent results. Furthermore, the transfections of cancer cells with either *INHBA* (labeled I) or *FST* (labeled F) did not have any effect on the presence of the signature (the corresponding expression levels were consistent with the transfections and did not affect the expression of the other genes in the signature).

These same 29 genes are used in the heat maps shown in the Additional files, suggesting that the same signature may be expressed in all solid tumors, even in non-epithelial tumors, such as neuroblastoma and Ewing's sarcoma. Therefore, our results imply that the underlying mesenchymal transition process is more general than what EMT is presumed to be.

We next analyzed the mouse microarray data to identify genes correlated with the presence of the cancer EMT signature in the human cells. We found 32 significantly (both

$Q < 0.05$ and $FC > 2$) downregulated mouse genes in the presence of the human cancer EMT signature. Among them, the top two genes with the highest fold change (12.3 and 11.8 respectively) were the adipocyte markers adiponectin (*ADIPOQ*) and adipisin (*CFD*). We observed that these genes were strongly co-regulated with many other adipocyte markers, including fatty acid binding protein 4 (*FABP4*) aka *aP2*. This cluster of adipocyte markers whose downregulation in the mouse cells is strongly associated with the upregulation of the EMT signature genes in human cells is also shown in the heat map of Figure 4. Many among these genes are known as adipocyte differentiation markers, and their downregulation is consistent with the finding that adipocytes are dedifferentiated as they encounter adjacent invading cancer cells in a "vicious cycle" [13] of a complex interaction facilitating cancer cell invasiveness. The observed downregulation of adipocyte markers in the adjacent mouse tissue, associated with the EMT-specific gene expression of the human cells provides a potential molecular control mechanism of microenvironmental contextual interactions in accordance with previously published results.

In summary, we have shown that a precise multi-cancer EMT signature present in numerous publicly available datasets was found in our xenograft experiments not to be expressed by the stromal cells, but instead by the human cancer cells themselves in vivo. Prior to our experiments, this was an open question. Indeed, similar signatures were usually referred to as "stromal," because they contain genes, such as α -SMA, that are typically found in stromal cells such as fibroblasts. Therefore,



our results are consistent with the hypothesis that an EMT can convert cancer cells into mesenchymal, fibroblast-like cells that may well assume the duties of cancer-associated fibroblasts in some tumors [14]. Of additional significance is the knowledge of the precise composition of this particular Slug-based signature (as found both in our xenograft experiments as well as numerous cancer datasets) as it provides opportunities for identifying potential targets for inhibiting the underlying biological mechanism of mesenchymal transition of cancer cells.

Discussion

The quality of “stemness” in cells appears to be closely interconnected with the ability to pass through transitions to and from mesenchymal characteristics. Indeed, EMT generates cells with properties of stem cells [15] and, conversely, MET is involved in the reprogramming of fibroblasts into stem cells [10]. Therefore, we speculate [8] that the cancer mesenchymal transition signature identified in this work may initiate from CSCs, which may even appear spontaneously [16]. It is also possible that the adipocytes of the stroma adjacent to

the tumor are dedifferentiated into a mesenchymal stem cell-like state and, together with other mesenchymal stem cells derived from the bone marrow [17] interact with the invading fibroblastic cancer cells in a manner that reactivates a particular early embryonic developmental program.

Not all genes in Table 1 are upregulated in the human cells. For example, *PLAU* (urokinase plasminogen activator) is slightly upregulated only in mouse cells consistently with its assumed role of being secreted by reactive stromal cells as a pro-enzyme that activates itself and other proteases in the presence of cancer cells.

Another prominent gene of the signature observed in public databases that was not upregulated in the human xenografted cells is *MMP11* (matrix metalloproteinase 11, aka stromelysin 3), in agreement with the hypothesis [13,18,19] that *MMP11* is expressed in the adipocytes of the adjacent reactive stroma, indicating that the full version of the cancer mesenchymal transition signature may be stabilized by contextual microenvironmental signals when cancer cells encounter adipocytes triggering their dedifferentiation, apoptosis, or metabolism [13]. The expression in cancer cells of the adipocyte enhancer binding protein 1 (*AEBP1*), a prominent gene of the signature known to bind in the promoter region of the adipocyte fatty-acid protein *FABP4* may play an important role in that respect, as may also the presence of oxidative stress and TNF signaling suggested by the presence of *TNFAIP6* and *C1QTNF3* in the signature.

The hypothesis that the mesenchymal transition signature is triggered by adipocytes is consistent with the facts [5] that in breast cancer the signature overexpression appears immediately upon reaching invasive stage I, while in ovarian cancer overexpression appears only when the tumor is already well into stage III as in omental metastasis, because ovarian cancer initially progresses by disseminating locally across mesothelial surfaces and probably carried by the physiological movement of peritoneal fluid to the peritoneum and omentum, a fatty structure [20].

The remarkable continuity of the signature (Figures 1 and 2) suggests that it may reflect a reversible process in which the mesenchymal markers in the cancer cells may appear and disappear depending on microenvironmental contextual signals. Its potential reversal is consistent with the possibility that passing through this mesenchymal transition at some point is a requirement for the initial stage of all metastases, even though the signature is significantly observed only in a subset of high-stage extracted samples at any given time. In other words, the lack of the signature in a particular extracted sample does not imply that cancer is not invasive, because the signature may have appeared earlier. However, the presence of the signature implies that the cancer is invasive; therefore a potential

related biomarker product would have high selectivity, but not sensitivity.

Conclusions

Many among the genes of the signature expressed by the human xenografted cells have previously been individually identified as associated with metastatic potential in cancer. Such associations can now largely be explained by the fact that these genes are expressed by the cancer cells themselves undergoing a mesenchymal transition. The known precise composition of the signature, particularly when combined with its separation in a species-specific manner in xenograft models, provides multiple and unique opportunities for understanding the underlying biological mechanisms and identifying diagnostic and prognostic markers as well as potential targets for metastasis-inhibiting therapeutics.

Additional material

Additional file 1: Heat map of breast cancer data set This file contains the heat map of the TCGA breast cancer data set for the genes of the mesenchymal transition signature.

Additional file 2: Heat map of colon cancer data set This file contains the heat map of the TCGA colon cancer data set for the genes of the mesenchymal transition signature.

Additional file 3: Heat map of Ewing's sarcoma data set This file contains the heat map of a Ewing's sarcoma data set (GEO accession number GSE12102) for the genes of the mesenchymal transition signature.

Additional file 4: Heat map of lung cancer data set This file contains the heat map of the TCGA lung cancer data set for the genes of the mesenchymal transition signature.

Additional file 5: Heat map of ovarian cancer data set This file contains the heat map of the TCGA ovarian cancer data set for the genes of the mesenchymal transition signature.

Additional file 6: Heat map of neuroblastoma data set This file contains the heat map of a neuroblastoma data set (GEO accession number GSE3960) for the genes of the mesenchymal transition signature.

Additional file 7: Heat map of leukemia data set This file contains the heat map of the TCGA leukemia data set for the genes of the mesenchymal transition signature.

Author details

¹Institute for Cancer Genetics, Columbia University, New York, NY, USA.

²Center for Computational Biology and Bioinformatics, Columbia University, New York, NY, USA. ³Department of Pathology and Cell Biology, Columbia University, New York, NY, USA. ⁴Department of Surgery, Columbia University, New York, NY, USA. ⁵Department of Pediatrics, Columbia University, New York, NY, USA. ⁶Department of Electrical Engineering, Columbia University, New York, NY, USA.

Authors' contributions

JJK, DJY and DA designed the experiments. VR performed the genetic experiments. WYC performed the computational experiments. All authors contributed to the analysis and interpretation of data. DA drafted the initial version of the manuscript. All authors contributed to the formulation of the final manuscript, which they read and approved.

Competing interests

The authors declare that they have no competing interests.

Received: 16 September 2011 Accepted: 30 December 2011

Published: 30 December 2011

References

1. Hay ED: An overview of epithelio-mesenchymal transformation. *Acta Anat (Basel)* 1995, **154**(1):8-20.
2. Thiery JP: Epithelial-mesenchymal transitions in tumour progression. *Nat Rev Cancer* 2002, **2**(6):442-454.
3. Kalluri R, Weinberg RA: The basics of epithelial-mesenchymal transition. *J Clin Invest* 2009, **119**(6):1420-1428.
4. Taube JH, Herschkowitz JI, Komurov K, Zhou AY, Gupta S, Yang J, Hartwell K, Onder TT, Gupta PB, Evans KW, et al: Core epithelial-to-mesenchymal transition interactome gene-expression signature is associated with claudin-low and metaplastic breast cancer subtypes. *Proc Natl Acad Sci USA* 2010, **107**(35):15449-15454.
5. Kim H, Watkinson J, Varadan V, Anastassiou D: Multi-cancer computational analysis reveals invasion-associated variant of desmoplastic reaction involving INHBA, THBS2 and COL11A1. *BMC Med Genomics* 2010, **3**:51.
6. Cover TM, Thomas JA: Elements of information theory. Hoboken, N.J.: Wiley-Interscience; 2006.
7. Jechlinger M, Grunert S, Tamir IH, Janda E, Ludemann S, Waerner T, Seither P, Weith A, Beug H, Kraut N: Expression profiling of epithelial plasticity in tumor progression. *Oncogene* 2003, **22**(46):7155-7169.
8. Cheng WY, Kim H, Kandel J, Anastassiou D: Cancer invasion associated gene expression signature is present in differentially expressed genes in the reprogramming of fibroblasts into stem cells. 2011, Available from Nature Precedings.
9. Boue S, Paramonov I, Barrero MJ, Izpisua Belmonte JC: Analysis of human and mouse reprogramming of somatic cells to induced pluripotent stem cells. What is in the plate? *PLoS One* 2010, **5**(9).
10. Polo JM, Hochedlinger K: When fibroblasts MET iPSCs. *Cell Stem Cell* 2010, **7**(1):5-6.
11. Tusher VG, Tibshirani R, Chu G: Significance analysis of microarrays applied to the ionizing radiation response. *Proc Natl Acad Sci USA* 2001, **98**(9):5116-5121.
12. Samuels AL, Peeva VK, Papa RA, Firth MJ, Francis RW, Beesley AH, Lock RB, Kees UR: Validation of a mouse xenograft model system for gene expression analysis of human acute lymphoblastic leukaemia. *BMC Genomics* 2010, **11**:256.
13. Motrescu ER, Rio MC: Cancer cells, adipocytes and matrix metalloproteinase 11: a vicious tumor progression cycle. *Biol Chem* 2008, **389**(8):1037-1041.
14. Hanahan D, Weinberg RA: Hallmarks of cancer: the next generation. *Cell* 2011, **144**(5):646-674.
15. Mani SA, Guo W, Liao MJ, Eaton EN, Ayyanan A, Zhou AY, Brooks M, Reinhard F, Zhang CC, Shipitsin M, et al: The epithelial-mesenchymal transition generates cells with properties of stem cells. *Cell* 2008, **133**(4):704-715.
16. Chaffer CL, Brueckmann I, Scheel C, Kaestli AJ, Wiggins PA, Rodrigues LO, Brooks M, Reinhardt F, Su Y, Polyak K, et al: Normal and neoplastic nonstem cells can spontaneously convert to a stem-like state. *Proc Natl Acad Sci USA* 2011, **108**(19):7950-7955.
17. Quante M, Tu SP, Tomita H, Gonda T, Wang SS, Takashi S, Baik GH, Shibata W, Diprete B, Betz KS, et al: Bone marrow-derived myofibroblasts contribute to the mesenchymal stem cell niche and promote tumor growth. *Cancer Cell* 2011, **19**(2):257-272.
18. Andarawewa KL, Motrescu ER, Chenard MP, Gansmuller A, Stoll I, Tomasetto C, Rio MC: Stromelysin-3 is a potent negative regulator of adipogenesis participating to cancer cell-adipocyte interaction/crosstalk at the tumor invasive front. *Cancer Res* 2005, **65**(23):10862-10871.
19. Dirat B, Bochet L, Dabek M, Daviaud D, Dauvillier S, Majed B, Wang YY, Meulle A, Salles B, Le Gondec S, et al: Cancer-associated adipocytes exhibit an activated phenotype and contribute to breast cancer invasion. *Cancer Res* 2011, **71**(7):2455-2465.
20. Lengyel E: Ovarian cancer development and metastasis. *Am J Pathol* 2010, **177**(3):1053-1064.

Pre-publication history

The pre-publication history for this paper can be accessed here:
http://www.biomedcentral.com/1471-2407/11/529/prepub

doi:10.1186/1471-2407-11-529

Cite this article as: Anastassiou et al.: Human cancer cells express Slug-based epithelial-mesenchymal transition gene expression signature obtained in vivo. *BMC Cancer* 2011 **11**:529.

Submit your next manuscript to BioMed Central
and take full advantage of:

- Convenient online submission
- Thorough peer review
- No space constraints or color figure charges
- Immediate publication on acceptance
- Inclusion in PubMed, CAS, Scopus and Google Scholar
- Research which is freely available for redistribution

Submit your manuscript at
www.biomedcentral.com/submit

