

RESEARCH ARTICLE

Open Access

Phosphorylated Smad2 in Advanced Stage Gastric Carcinoma

Osamu Shinto¹, Masakazu Yashiro^{1,2*}, Takahiro Toyokawa¹, Takafumi Nishii¹, Ryoji Kaizaki¹, Taro Matsuzaki¹, Satoru Noda¹, Naoshi Kubo¹, Hiroaki Tanaka¹, Yosuke Doi¹, Masaichi Ohira¹, Kazuya Muguruma¹, Tetsuji Sawada¹, Kosei Hirakawa¹

Abstract

Background: Transforming growth factor β (TGF β) receptor signaling is closely associated with the invasion ability of gastric cancer cells. Although Smad signal is a critical integrator of TGF β receptor signaling transduction systems, not much is known about the role of Smad2 expression in gastric carcinoma. The aim of the current study is to clarify the role of phosphorylated Smad2 (p-Smad2) in gastric adenocarcinomas at advanced stages.

Methods: Immunohistochemical staining with anti-p-Smad2 was performed on paraffin-embedded specimens from 135 patients with advanced gastric adenocarcinomas. We also evaluated the relationship between the expression levels of p-Smad2 and clinicopathologic characteristics of patients with gastric adenocarcinomas.

Results: The p-Smad2 expression level was high in 63 (47%) of 135 gastric carcinomas. The p-Smad2 expression level was significantly higher in diffuse type carcinoma ($p = 0.007$), tumours with peritoneal metastasis ($p = 0.017$), and tumours with lymph node metastasis ($p = 0.047$). The prognosis for p-Smad2-high patients was significantly ($p = 0.035$, log-rank) poorer than that of p-Smad2-low patients, while a multivariate analysis revealed that p-Smad2 expression was not an independence prognostic factor.

Conclusion: The expression of p-Smad2 is associated with malignant phenotype and poor prognosis in patients with advanced gastric carcinoma.

Background

Transforming growth factor β (TGF β) is a multifunctional cytokine and one of most important pathways for cancer cells [1,2]. TGF β binds to two different serine/threonine kinase receptors (T β R), termed type I and type II. The activated T β R type I kinase phosphorylates Smad2 and Smad3. Phosphorylated Smad2 (p-Smad2) and p-Smad3 are oligomerized with Smad4, migrate into nucleus and regulate transcription [1,3]. In normal epithelial cells, TGF β is a potent inhibitor of proliferation, and it has been considered a tumour suppressor. Although TGF β acts as a tumour suppressor in early-stage tumours, during tumour progression the TGF β antiproliferative function is lost, and in certain cases TGF β becomes an oncogenic factor inducing cell

proliferation, invasion, angiogenesis, and immune suppression [4,5]. It has been reported that TGF β can signal not only through Smad-dependent, but also Smad-independent pathways [6]. Because of the dual aspects of TGF β in oncogenesis, Smad signal might be a critical integrator of TGF β receptor signaling transduction systems, although the significance of Smad expression is still controversial. Bruna et al. 2007 demonstrated that high TGF β -Smad activity is present in aggressive, highly proliferative gliomas and confers poor prognosis in patients with glioma [7], while a lack of Smad expression appears to be correlated with tumour development and poor prognosis in patients with esophageal squamous cell carcinoma [8] breast cancer [9] and colorectal cancer [10]. Not much is known regarding the prognostic value of Smad2 expression in gastric carcinoma, while several reports of serum levels of TGF β [11,12] suggested that TGF β can induce invasion and metastasis in gastric carcinoma. Understanding the significance of

* Correspondence: m9312510@med.osaka-cu.ac.jp

¹Department of Surgical Oncology, Osaka City University Graduate School of Medicine, 1-4-3 Asahi-machi, Abeno-ku, Osaka, Japan

Full list of author information is available at the end of the article

Smad2 might be useful in gastric cancer. In this study, therefore, we investigated the p-Smad2 expression of gastric carcinoma to clarify the role of p-Smad2 in advanced gastric adenocarcinomas.

Methods

Patients

We examined surgical samples from patients at the Osaka City University Hospital, Osaka, Japan. A total of 135 patients who had undergone resection of primary gastric tumours and were confirmed histologically to have advanced gastric cancer, were enrolled in this study. "Advanced cancer" indicates cancer invasion of the muscularis propria or serosa. None of the patients had undergone preoperative radiation or chemotherapy. Pathological diagnoses and classifications followed the Japanese Classification of Gastric Carcinoma [13]. Hepatic metastasis and peritoneal metastasis were examined at laparotomy. Peritoneal lavage cytology of the abdominal cavity was performed at laparotomy, and exfoliated cancer cells were microscopically examined. Depth of tumour invasion, differentiation, lymph node metastasis, venous invasion and lymphatic invasion were based on microscopic examination of materials obtained by surgical resection. The histological classification was based on the predominant pattern of tumour. The histological subtypes were: papillary adenocarcinoma, well-differentiated tubular adenocarcinoma and moderately-differentiated tubular adenocarcinoma, regarded as intestinal-type. The subtypes were: solid poorly-differentiated adenocarcinoma, non-solid poorly-differentiated adenocarcinoma, signet-ring cell carcinoma and mucinous carcinoma, regarded as diffuse-type. Lymph node metastasis was decided on the regional lymph nodes metastasis. The regional lymph nodes of the stomach are classified into three stations numbered as described in the Japanese classification [13] that depending upon the location of the primary tumour. As the number of increase, it indicated that spread to distant lymph nodes. The study protocol conformed to the ethical guidelines of the Declaration of Helsinki (1975). This study was approved by the Osaka City University ethics committee. Informed consent was obtained from all patients prior to entry.

Immunohistochemical techniques

All the H&E-stained slides of the surgical specimens were reviewed, and the representative section of the tumour that included the site of deepest invasion was selected for the immunohistochemical study.

A rabbit polyclonal anti-human P-Smad2 antibody (Chemicon International, Themecula, CA. 1:2000) was used to detect p-Smad2. The methods for immunohistochemical staining of p-Smad2 have been

described in the manufacturer's instructions. In brief, the slides were deparaffinized, and were heated for 20 min at 105°C by autoclave in Target Retrieval Solution (Dako, Carpinteria, CA). Sections were then incubated with 3% hydrogen peroxide to block endogenous peroxidase activity. The specimens were incubated with p-Smad2 antibody (1:2,000) overnight at 4°C. The sections were incubated with biotinylated goat anti-rabbit immunoglobulin G for 30 min, followed by three washes with PBS. The slides were treated with streptavidin-peroxidase reagent, and were incubated in PBS diaminobenzidine and 1% hydrogen peroxide v/v, followed by counterstaining with Mayer's hematoxylin. We previously reported the expression level of p-Smad2 in gastric cancer cell lines [14]. The omission of the primary antibody served as negative controls.

Immunohistochemical determination of p-Smad2

P-Smad2 staining was evaluated at the invasion front of gastric cancers. Both hematoxylin and eosin staining were used as a reference slide to select cancer areas at the invading front. The existence of cancer cells was continuously examined from the serosa to the mucosa under a microscope. The invading front was determined at the lesion where cancer cells were first found from serosal side. P-Smad2 staining was evident in the nuclei of cancer cells. The percentage of p-Smad2 immunopositive cells was determined by counting 3 areas randomly chosen in the tissue in a total of 300 nuclei of cancer cells. Evaluation was made by two double-blinded independent observers who were unaware of clinical data and histologic diagnoses. The percentage of nucleus stained cells for p-Smad2 was also determined. There were 15 (11%) cases of a discrepant evaluation between the two independent observers. In those cases, we rechecked and discussed and the final score was obtained by consensus.

Staining was scored using the Allred scoring system as described previously [15]. For semi-quantitative analysis of p-Smad2 immuno-reactivity, the intensity of staining and percentage of tumour stained cells were evaluated in representative high-power ($\times 400$) and low-power fields ($\times 200$) using optical microscopy: intensity was scored 0-3 (0 = no immunoreactivity, 1 = weak, 2 = moderate, and 3 = intense immunoreactivity) and proportion was scored 0-5 (0 = 0%; 1 = 1-20%; 2 = 21-40%; 3 = 41-60%; 4 = 61-80%; 5 = 81-100%). The two scores were then added to obtain the final result of 0-8. The median score of all cases was 6.07. Then the cut-off point was determined 6; p-Smad2 expression was considered high expression when scores were ≥ 7 and low expression when scores were < 7 .

Statistical analysis

Comparative analyses of the data were performed using the Chi-square test or Fisher's exact test. The survival durations were calculated using the Kaplan-Meier method and analyzed by the log-rank test to compare the cumulative survival durations in the patient groups. Cox proportional-hazards regression was used to compute univariate and multivariate hazards ratios for the study parameters. A p-value of less than 0.05 was defined as being statistically significant. SPSS 10.0 software (SPSS Japan, Tokyo, Japan) was used for the analyses.

Results

Relationship between clinicopathological features and phospho-Smad2 expression

Phospho-Smad2 was mainly immunolocalized in the nuclei of cancer cells (Figure 1A). The intensity of staining and percentage of stained tumour cells were variable. Regarding intensity, score 0 was found in no cases (0%), score 1 in 55 cases (41%), score 2 in 33 cases (24%), and score 3 in 47 (35%) cases. Upon evaluation of positive cell percentages, score 0 was found in no cases (0%), score 1 in 2 cases (1%), score 2 in 11 cases (8%), score 3 in 16 cases (12%), score 4 in 43 cases (32%), and score 5 in 63 cases (47%). The total Allred scores varied from 2 to 8. The high expression level of p-Smad2 was found in 63 (47%) of 135 gastric carcinomas. The relationships between p-Smad2 expression and clinicopathological features of the tumours are shown in Table 1. P-Smad2 expression level was significantly high in diffuse type carcinoma ($p = 0.011$) and significantly correlated with peritoneal metastasis ($p = 0.017$), lymph node metastasis by Japanese classification [13] or UICC classification [16] ($p = 0.047$, $p = 0.004$) and peritoneal cytology ($p = 0.026$). "Peritoneal cytology" means peritoneal lavage cytology at laparotomy as a standard method for the detection of free tumor cells and a useful predictor of peritoneal recurrence in gastric cancer. In 12 cases, peritoneal cytology was not performed. Then the total number of peritoneal cytology was 123 cases. There was no statistically significant association between the phospho-Smad2 expression and either hepatic metastasis, venous invasion or lymphatic invasion. The number of metastatic lymph nodes in high-expression group (median = 12.3) was significantly ($p = 0.002$) higher than that in low-expression group (median = 5.77), while no difference of the number of affected lymph nodes was shown between low-p-Smad2 groups (median = 41.1) and high-p-Smad2 groups (median = 44.4).

Phospho-Smad2 relates with poor prognosis in gastric cancer

In this series of advanced gastric cancer, survival of phospho-Smad2 high level expression patients was

significantly poorer than that of phospho-Smad2 low level expression patients ($p = 0.035$, Figure 1B). In univariate analysis, high phospho-Smad2 expression ($p = 0.048$), morphological type 4 ($p < 0.001$), diffuse-type tumours ($p < 0.001$), lymph node metastasis ($p < 0.001$), peritoneal metastasis ($p < 0.001$), peritoneal free cancer cells ($p < 0.001$), lymphatic invasion ($p = 0.006$) and clinical stage IV ($p < 0.001$) were significantly associated to poor patient survival (Table 2). In multivariate analysis, morphologic type 4, diffuse-type tumours and clinical stage IV were statistically independent prognostic factors, but phospho-Smad2 was not (Table 3).

Discussion

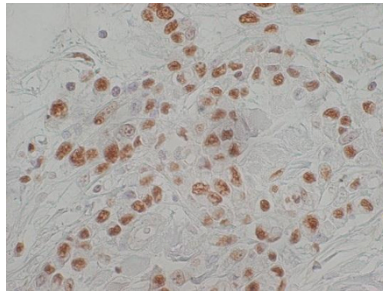
P-Smads2 is a primary step and intracellular signaling effector for the mediation of intracellular signaling of TGF β [1]. In early-stage tumours TGF β acts as a tumours suppressor, while in advanced tumours it becomes an oncogenic factor. Because of the dual role of TGF β in oncogenesis, depending on the type and stage of the tumour, we focused our study on p-Smad2 expression on the advanced stage of gastric cancer. P-Smad2 expression levels of cancer cells were high in 63 (47%) of 135 gastric carcinomas, suggesting that some types of gastric carcinomas were strongly-affected by TGF β . In the present study, p-Smad2 expression in tumour cells was significantly higher in diffuse-type tumours and in cases with peritoneal metastasis, free peritoneal cancer cells and lymph node metastasis. Moreover, p-Smad2 high expression predicted poor survival. These findings suggest that p-Smad2 is associated to malignant phenotype and is a molecular biomarker of disease outcome in advanced gastric cancer.

P-Smad2 expression levels of cancer cells were high in diffuse-type gastric carcinoma also known as a scirrhous type. There are two types of gastric cancer: diffuse type and intestinal type, according to the Laurén classification [17]. The characteristic clinical features of diffuse-type gastric carcinoma, a diffusely infiltrating type of gastric carcinoma, include a high frequency of metastasis to the LNs [18-20] and to the peritoneum [21-23]. The expression level of TGF β in scirrhous gastric carcinoma was related with poor prognosis [24]. Tumor cells in scirrhous carcinoma produce more TGF β than non-scirrhous carcinoma [25,26]. TGF β signals might play an important role for the metastatic spread of cancer cells such as migration, and invasion, as previously reported [2,11,27]. In fact, Overexpression of Smad2 was associated with metastasis, and was correlated with poor prognosis of gastric tumors especially diffuse-type gastric carcinoma. TGF β -Smad2 signaling may have an important role in the progression of diffuse-type gastric carcinoma. The activated Smad2 level might be associated with the different clinical phenotype of

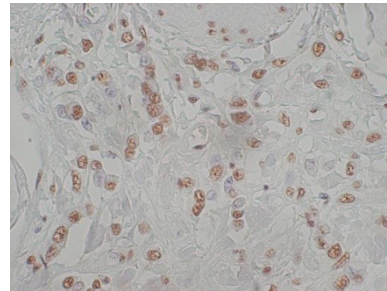
A

Immunohistochemical determination of p-Smad2

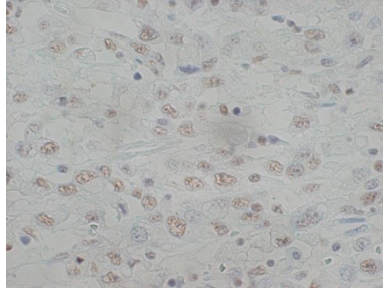
Intensity score 3



Intensity score 2



Intensity score 1



B

The overall survival of patients based on p-Smad2 expression

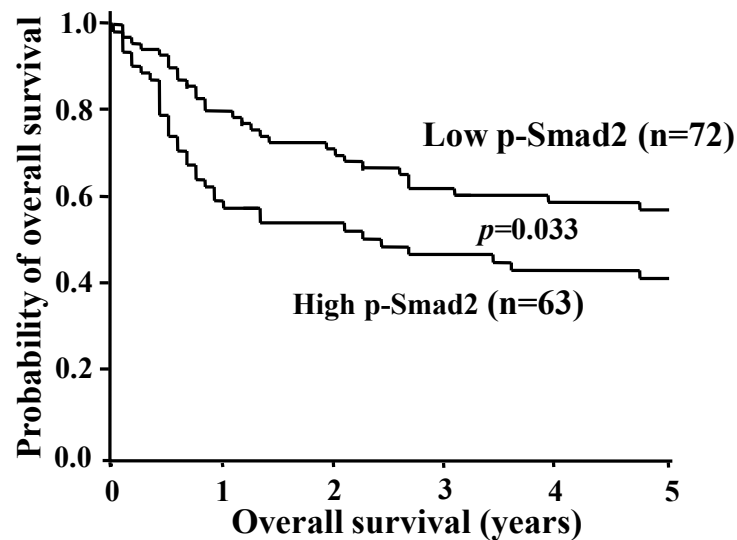


Figure 1 (A), Immunohistochemical determination of p-Smad2. P-Smad2 was found in the nuclei of cancer cells. The Immunoreactive intensity score of p-Smad2 staining in tumour cells was evaluated using the positive and negative controls. Score 3 means high intensity as same as the positive control. Immunoreactivity, score 1 = weak, score 2 = moderate, and score 3 = intense. ($\times 400$). **(B)**, The overall survival of patients based on p-Smad2 expression. The Kaplan-Meier survival curve shows the overall survival in relation to the p-Smad2 expression in 135 patients with gastric carcinoma. A statistically significant difference in the survival was observed between the high p-Smad2 groups and low p-Smad2 groups ($p = 0.035$; log-rank).

Table 1 Relationships between p-Smad2 and clinicopathological features in 135 gastric cancer cases

| Parameter | P-Smad2 | | p-Value | |
|---|-----------------|--------------|------------|-------|
| | High (n = 63) | Low (n = 72) | | |
| Gender | | | | |
| | Male | 39 (41.9%) | 54 (58.1%) | N.S. |
| | Female | 24 (57.1%) | 18 (42.9%) | |
| Morphologic feature ⁺ | | | | |
| | Type 1 | 6 (37.5%) | 10 (62.5%) | 0.025 |
| | Type 2 | 14 (35.0%) | 26 (65.0%) | |
| | Type 3 | 17 (45.9%) | 20 (54.1%) | |
| | Type 4 | 26 (61.9%) | 16 (38.1%) | |
| T stage | | | | |
| | 2 | 7 (25.9%) | 20 (74.1%) | 0.031 |
| | 3 | 52 (50.0%) | 52 (50.0%) | |
| | 4 | 4 (100.0%) | 0 (0.00%) | |
| Differentiation | | | | |
| | Intestinal-type | 15 (31.2%) | 33 (68.8%) | 0.011 |
| | Diffuse-type | 48 (55.2%) | 39 (44.8%) | |
| Lymph node metastasis ⁺ (Japanese classification) | N0 and N1 | 34 (40.5%) | 50 (59.5%) | 0.047 |
| | N2 and N3 | 29 (56.9%) | 22 (43.1%) | |
| Lymph node metastasis ⁺⁺ (UICC classification) | N0 and N1 | 31 (36.9%) | 53 (63.1%) | 0.004 |
| | N2 and N3 | 32 (62.7%) | 19 (37.3%) | |
| Hepatic metastasis | | | | |
| | Negative | 62 (47.0%) | 70 (53.0%) | N.S. |
| | Positive | 1 (33.3%) | 2 (66.7%) | |
| Peritoneal metastasis | | | | |
| | Negative | 48 (42.1%) | 66 (57.9%) | 0.017 |
| | Positive | 15 (71.4%) | 6 (28.6%) | |
| Peritoneal cytology ⁺⁺⁺ | | | | |
| | Negative | 36 (40.4%) | 53 (59.6%) | 0.026 |
| | Positive | 22 (64.7%) | 12 (35.3%) | |
| Lymphatic invasion | | | | |
| | Ly0 and ly1 | 26 (40.6%) | 38 (59.4%) | N.S. |
| | Ly2 and ly3 | 37 (52.1%) | 34 (47.9%) | |
| Venous invasion | | | | |
| | Negative | 50 (45.5%) | 60 (54.5%) | N.S. |
| | Positive | 13 (52.0%) | 12 (48.0%) | |
| Clinical stage | | | | |
| | I | 2 (22.2%) | 7 (77.8%) | 0.022 |
| | II | 15 (39.5%) | 23 (60.5%) | |
| | III | 18 (40.0%) | 27 (60.0%) | |
| | IV | 28 (68.7%) | 15 (31.3%) | |

⁺ Classification according to the General Rules for Gastric Cancer Study of the Japanese Research Society for Gastric Cancer [13]. Type 1 is defined as a polypoid tumor; type 2 as polypoid tumor with ulceration and with sharply demarcated margins; type 3 as ulcerated carcinoma with cancer infiltration into the surrounding wall; type 4 as diffusely infiltrating flat carcinoma in which ulceration is usually not a marked feature.

⁺⁺ Nodal stage was assessed by the Union Internationale Contre le Cancer (UICC) tumor node metastasis (TNM) classification [16] and by classification according to the general rules for gastric cancer study of the Japanese Research Society for Gastric Cancer. In the TNM classification, nodal stage was classified according to the number of involved regional LNs as follows: pN0, no LN spread; pN1, 1 to 6 diseased LNs; pN2, 7 to 15; and pN3, more than 15. In the Japanese classification, nodal stage was classified according to the extent of positive LN into n0, n1, n2, and n3 and is considered to reflect the anatomic pathway of lymphatic spread. n1 is defined as proximate regional LN disease, and n2 or n3 are defined as distant.

⁺⁺⁺ In 12 cases, peritoneal cytology was not performed (Total 123 cases).

Table 2 Univariate analysis with respect to overall survival (n = 135)

| Parameter | Risk ratio | 95% Confidence interval | p-Value |
|---|------------|-------------------------|---------|
| P-Smad2 expression | 1.650 | 1.005–2.710 | 0.048 |
| Low vs. high | | | |
| Morphologic feature | 5.354 | 3.199–8.963 | <0.001 |
| Type 1, 2, and 3 vs. type 4 | | | |
| Differentiation | 3.883 | 2.020–7.463 | <0.001 |
| Intestinal-type vs. Diffuse-type | | | |
| Lymph node metastasis (Japanese classification) | 3.269 | 1.978–5.403 | <0.001 |
| N0 and N1 vs. N2 and N3 | | | |
| Peritoneal dissemination | 5.534 | 3.056–8.738 | <0.001 |
| Negative vs. positive | | | |
| Peritoneal cytology | 5.937 | 3.468–10.166 | <0.001 |
| Negative vs. positive | | | |
| Lymphatic invasion | 2.055 | 1.234–3.421 | 0.006 |
| Ly0 and ly1 vs. ly2 and ly3 | | | |
| Clinical Stage | 6.901 | 4.088–11.651 | <0.001 |
| I, II, and III vs. IV | | | |

malignancy between the diffuse-type and intestinal-type in gastric carcinoma.

Immunohistochemical is a good method of choice for the evaluation of protein expression within a particular tissue, since it is possible to distinguish the cell types stained, as well as the number of cells and intensity of the immunohistochemical stained. Both analyses must be combined and it was done. Allred score system evaluates a combination of intensity and proportion, potentially increasing the prognostic value of the analysis by the intensity alone or the proportion alone in this study. Allred scores of 7–8 were considered suitable for the identification of aggressive advanced gastric carcinoma. Allred score system for p-Smad2 expression might be suitable for accurately assessing p-Smad2-expressing tumor cells, and might be adequate for predicting the

outcome of patients with gastric cancer. P-Smad2 staining was evaluated at the invasion front of gastric cancers. P-Smad2 expression in nuclei of cancer cells was continuously examined from the serosa to the mucosa under a microscope. Few difference of p-Smad2 staining was found between infiltrative front and surface lesions in the same cases. And, the tumor cells at the invading front might play an important role for distant metastasis. Therefore, p-Smad2 expression of the tumor cells was evaluated at the invading front.

Since the activated Smad2 was associated with the malignant phenotype of gastric cancer, it is possible that inhibition of p-Smad2 signaling in gastric carcinoma may yield beneficial effects through inhibition of invasion and metastasis of cancer. Although, the TGFβ pathway is being evaluated as a therapeutic target in gastric

Table 3 Multivariate analysis with respect to overall survival (n = 135)

| Parameter | Risk ratio | 95% Confidence interval | p-Value |
|---|------------|-------------------------|---------|
| P-Smad2 expression | 0.627 | 0.347–1.133 | 0.122 |
| Low vs. high | | | |
| Morphologic feature | 2.325 | 1.221–4.388 | 0.010 |
| Type 1, 2, and 3 vs. type 4 | | | |
| Differentiation | 2.807 | 1.251–6.298 | 0.012 |
| Intestinal-type vs. Diffuse-type | | | |
| Lymph node metastasis (Japanese classification) | 1.387 | 0.689–2.794 | 0.360 |
| N0 and N1 vs. N2 and N3 | | | |
| Peritoneal dissemination | 1.097 | 0.549–2.193 | 0.793 |
| Negative vs. positive | | | |
| Lymphatic invasion | 1.394 | 0.805–2.413 | 0.235 |
| Ly0 and ly1 vs. ly2 and ly3 | | | |
| Clinical Stage | 4.382 | 1.924–9.978 | <0.001 |
| I, II, and III vs. IV | | | |

cancer [28,29], the complex roles of TGF β in tumor progression might make it difficult to select the patients that will benefit from an anti-TGF β therapy. The determination of p-Smad2 expression by the Allred score system might improve patient selection and the development of successful targeted therapies, although it will be necessary to confirm that the p-Smad2 Allred score also provides significant prognostic power for gastric cancer patients in a prospective study.

Conclusion

P-Smad2 appears to play a crucial role in advanced gastric carcinoma and may be a useful prognostic marker of poor prognosis.

Acknowledgements

We thank Masako Shinkawa (Osaka City University Graduate School of Medicine) for technical assistance.

Author details

¹Department of Surgical Oncology, Osaka City University Graduate School of Medicine, 1-4-3 Asahi-machi, Abeno-ku, Osaka, Japan. ²Oncology Institute of Geriatrics and Medical Science, Osaka City University Graduate School of Medicine, 1-4-3 Asahi-machi, Abeno-ku, Osaka, Japan.

Authors' contributions

OS conceived the design of the study, performed the statistical analysis and drafted the manuscript. MY conceived the design of the study and performed the statistical analysis. TT, RK, TN, TM, SN, and YD performed the statistical analysis and collected the material sampling. NK, HT, MO, KM, and TS collected the material sampling. KH participated in its design and coordination.

Sources of support

This study was supported in part by Grants-in Aid for Scientific Research (Nos. 18591475, 20591073, and 18390369) from the Ministry of Education, Science, Sports, Culture and Technology of Japan, by a JSGE Grant-in Aid for Scientific Research, by a Grant-in Aid for Kobayashi Foundation for Innovative Cancer Chemotherapy, by a Grant-in Aid for the Sagawa Foundation for Cancer Research, and by a Grant-in Aid for the Osaka Medical Research Foundation for Incurable Diseases

Competing interests

The authors declare that they have no competing interests.

Received: 11 April 2010 Accepted: 26 November 2010

Published: 26 November 2010

References

- Miyazono K, Suzuki H, Imamura T: Regulation of TGF-beta signaling and its roles in progression of tumors. *Cancer Sci* 2003, **94**(3):230-234.
- Massague J: TGFbeta in Cancer. *Cell* 2008, **134**(2):215-230.
- Massague J, Seoane J, Wotton D: Smad transcription factors. *Genes Dev* 2005, **19**(23):2783-2810.
- Derynck R, Zhang YE: Smad-dependent and Smad-independent pathways in TGF-beta family signalling. *Nature* 2003, **425**(6958):577-584.
- Derynck R, Akhurst RJ, Balmain A: TGF-beta signaling in tumor suppression and cancer progression. *Nat Genet* 2001, **29**(2):117-129.
- Moustakas A, Heldin CH: Non-Smad TGF-beta signals. *J Cell Sci* 2005, **118**(Pt 16):3573-3584.
- Bruna A, Darken RS, Rojo F, Ocana A, Penuelas S, Arias A, Paris R, Tortosa A, Mora J, Baselga J, et al: High TGFbeta-Smad activity confers poor prognosis in glioma patients and promotes cell proliferation depending on the methylation of the PDGF-B gene. *Cancer Cell* 2007, **11**(2):147-160.
- Fukuchi M, Nakajima M, Miyazaki T, Masuda N, Osawa H, Manda R, Tsukada K, Kato H, Kuwano H: Lack of activated Smad2 in transforming growth factor-beta signaling is an unfavorable prognostic factor in patients with esophageal squamous cell carcinoma. *J Surg Oncol* 2006, **94**(1):51-56.
- Xie W, Mertens JC, Reiss DJ, Rimm DL, Camp RL, Haffty BG, Reiss M: Alterations of Smad signaling in human breast carcinoma are associated with poor outcome: a tissue microarray study. *Cancer Res* 2002, **62**(2):497-505.
- Xie W, Rimm DL, Lin Y, Shih WJ, Reiss M: Loss of Smad signaling in human colorectal cancer is associated with advanced disease and poor prognosis. *Cancer J* 2003, **9**(4):302-312.
- Saito H, Tsujitani S, Oka S, Kondo A, Ikeguchi M, Maeta M, Kaibara N: An elevated serum level of transforming growth factor-beta 1 (TGF-beta 1) significantly correlated with lymph node metastasis and poor prognosis in patients with gastric carcinoma. *Anticancer Res* 2000, **20**(6B):4489-4493.
- Lin Y, Kikuchi S, Obata Y, Yagyu K: Serum levels of transforming growth factor beta1 are significantly correlated with venous invasion in patients with gastric cancer. *J Gastroenterol Hepatol* 2006, **21**(2):432-437.
- Japanese Gastric Cancer A: Japanese Classification of Gastric Carcinoma - 2nd English Edition. *Gastric Cancer* 1998, **1**(1):10-24.
- Shinto O, Yashiro M, Kawajiri H, Shimizu K, Shimizu T, Miwa A, Hirakawa K: Inhibitory effect of a TGFbeta receptor type-I inhibitor, KI26894, on invasiveness of scirrhous gastric cancer cells. *Br J Cancer* 102(5):844-851.
- Allred DC, Harvey JM, Berardo M, Clark GM: Prognostic and predictive factors in breast cancer by immunohistochemical analysis. *Mod Pathol* 1998, **11**(2):155-168.
- Sobin LH, Fleming ID: TNM Classification of Malignant Tumors, fifth edition (1997). Union Internationale Contre le Cancer and the American Joint Committee on Cancer. *Cancer* 1997, **80**(9):1803-1804.
- Lauren P: The Two Histological Main Types of Gastric Carcinoma: Diffuse and So-Called Intestinal-Type Carcinoma. an Attempt at a Histo-Clinical Classification. *Acta Pathol Microbiol Scand* 1965, **64**:31-49.
- Nakazawa K, Yashiro M, Hirakawa K: Keratinocyte growth factor produced by gastric fibroblasts specifically stimulates proliferation of cancer cells from scirrhous gastric carcinoma. *Cancer Res* 2003, **63**(24):8848-8852.
- Fujihara T, Yashiro M, Inoue T, Sawada T, Kato Y, Ohira M, Nishiguchi Y, Ishikawa T, Sowa M, Chung KH: Decrease in ICAM-1 expression on gastric cancer cells is correlated with lymph node metastasis. *Gastric Cancer* 1999, **2**(4):221-225.
- Hippo Y, Yashiro M, Ishii M, Taniguchi H, Tsutsumi S, Hirakawa K, Kodama T, Aburatani H: Differential gene expression profiles of scirrhous gastric cancer cells with high metastatic potential to peritoneum or lymph nodes. *Cancer Res* 2001, **61**(3):889-895.
- Yashiro M, Chung YS, Kubo T, Hato F, Sowa M: Differential responses of scirrhous and well-differentiated gastric cancer cells to orthotopic fibroblasts. *Br J Cancer* 1996, **74**(7):1096-1103.
- Tendo M, Yashiro M, Nakazawa K, Yamada N, Hirakawa K: Inhibitory effect of a selective cyclooxygenase inhibitor on the invasion-stimulating activity of orthotopic fibroblasts for scirrhous gastric cancer cells. *Cancer Sci* 2005, **96**(7):451-455.
- Takemura S, Yashiro M, Sunami T, Tendo M, Hirakawa K: Novel models for human scirrhous gastric carcinoma in vivo. *Cancer Sci* 2004, **95**(11):893-900.
- Kinugasa S, Abe S, Tachibana M, Hishikawa Y, Yoshimura H, Monden N, Dhar DK, Nagasue N, Nagaoka S: Overexpression of transforming growth factor-beta1 in scirrhous carcinoma of the stomach correlates with decreased survival. *Oncology* 1998, **55**(6):582-587.
- Mahara K, Kato J, Terui T, Takimoto R, Horimoto M, Murakami T, Mogi Y, Watanabe N, Kohgo Y, Niitsu Y: Transforming growth factor beta 1 secreted from scirrhous gastric cancer cells is associated with excess collagen deposition in the tissue. *British journal of cancer* 1994, **69**(4):777-783.
- Yoshida K, Yokozaki H, Niimoto M, Ito H, Ito M, Tahara E: Expression of TGF-beta and procollagen type I and type III in human gastric carcinomas. *International journal of cancer* 1989, **44**(3):394-398.
- Yang L, Moses HL: Transforming growth factor beta: tumor suppressor or promoter? Are host immune cells the answer? *Cancer research* 2008, **68**(22):9107-9111.
- Kawajiri H, Yashiro M, Shinto O, Nakamura K, Tendo M, Takemura S, Node M, Hamashima Y, Kajimoto T, Sawada T, et al: A novel transforming growth factor beta receptor kinase inhibitor, A-77, prevents the

peritoneal dissemination of scirrhous gastric carcinoma. *Clin Cancer Res* 2008, **14**(9):2850-2860.

29. Kano MR, Bae Y, Iwata C, Morishita Y, Yashiro M, Oka M, Fujii T, Komuro A, Kiyono K, Kaminishi M, et al: **Improvement of cancer-targeting therapy, using nanocarriers for intractable solid tumors by inhibition of TGF-beta signaling.** *Proc Natl Acad Sci USA* 2007, **104**(9):3460-3465.

Pre-publication history

The pre-publication history for this paper can be accessed here:
<http://www.biomedcentral.com/1471-2407/10/652/prepub>

doi:10.1186/1471-2407-10-652

Cite this article as: Shinto et al.: Phosphorylated Smad2 in Advanced Stage Gastric Carcinoma. *BMC Cancer* 2010 **10**:652.

**Submit your next manuscript to BioMed Central
and take full advantage of:**

- Convenient online submission
- Thorough peer review
- No space constraints or color figure charges
- Immediate publication on acceptance
- Inclusion in PubMed, CAS, Scopus and Google Scholar
- Research which is freely available for redistribution

Submit your manuscript at
www.biomedcentral.com/submit

