

RESEARCH ARTICLE

Open Access

Atorvastatin treatment attenuates renal injury in an experimental model of ischemia–reperfusion in rats

Kefei Wu¹, Wenjing Lei², Jianwei Tian² and Hongyan Li^{1*}

Abstract

Background: Recent studies in animal models have shown that statins can protect against renal failure independent of their lipid-lowering actions, and there is also an association between statin use and improved renal function after suprarenal aortic clamping. We investigated the hypothesis that post-ischemic acute renal failure could be ameliorated with atorvastatin (ATO) treatment and the possible molecular mechanisms in a model of ischemia–reperfusion (IR) in rats.

Methods: Twenty-four male Sprague–Dawley rats were divided into three groups: sham, IR, and IR + ATO. ATO was given by a single intraperitoneal injection (10 mg/kg) 30 min before reperfusion in the IR + ATO group. The IR group and sham group received saline vehicle via the intraperitoneal route.

Results: After 24 h of IR, serum creatinine levels were increased in the IR group compared with the sham group ($p < 0.001$). ATO treatment reduced the elevation of serum creatinine level by 18% ($p < 0.05$) and significantly increased the creatinine clearance rate ($p < 0.001$). Concentrations of advanced oxidation protein products and malondialdehyde were reduced in the ATO group, approaching levels observed in sham-group rats. ATO treatment alleviated pathological changes in renal tubular cells. Protein and mRNA levels of intercellular adhesion molecule-1 and monocyte chemoattractant protein-1 were reduced significantly.

Conclusions: These data suggest that direct protection of injured kidneys by ATO was possible even though the drug was injected 30 min before reperfusion, and that ATO may reduce IR injury by anti-inflammatory effects and by reducing oxidation stress.

Background

The major causes of acute renal failure (ARF) are acute renal ischemia–reperfusion injury due to hemorrhage, severe injury, shock, or kidney transplantation. The mortality associated with ARF in critically ill patients remains high even though application of intensive care and blood purification has provided advanced treatment and a better prognosis for ARF patients [1,2]. Various agents, including dopamine, atrial natriuretic peptide, insulin-like growth factor, and endothelial receptor antagonists have been found to be effective in animals but ineffective in clinical studies [3–6]. It is necessary to

explore and find more efficient and practical methods for timely prevention and cure.

ARF is a complex disorder resulting from heterogeneous pathogenic factors. Recent studies have shown that reactive oxygen species (ROS), inflammatory mediators such as intracellular adhesion molecule (ICAM-1) and monocyte chemoattractant protein-1 (MCP-1) [7,8] as well as infiltration of inflammatory cells are implicated in renal ischemia–reperfusion injury [2]. In several studies, the effects of statins in ischemia–reperfusion models of renal protection have been related to their anti-inflammatory, antioxidant, and vascular actions [9–11]. Although these findings suggest an association between statin use and preserved renal function in ARF scenarios such as suprarenal aortic clamping, kidney transplantation, and critically ill patients in the intensive care unit [12,13], they carry little significance in patients with

* Correspondence: lihy0726@126.com

¹Division of Nephrology, Huadu Hospital, Southern Medical University, Guangzhou, People's Republic of China

Full list of author information is available at the end of the article

unpredictable ARF caused by hemorrhage, severe injury, or shock. In these studies, statin intervention has been several days before ischemia–reperfusion injury. However, the effects of statin intervention after ischemia–reperfusion injury are not fully understood and it is of significance to the clinical treatment of ARF. Todorovic et al. reported that a single intravenous bolus injection of simvastatin after ischemia could relieve tubular necrosis, suggesting that intervention after ARF may improve the prognosis [14]. Therefore, the present study was undertaken to examine the effects and mechanisms of atorvastatin (ATO) after renal ischemia–reperfusion injury with focuses on tubular damage, necrosis, inflammation and oxidant stress in rats.

Methods

All animal procedures were approved by the Animal Experiment Committee of Southern Medical University (Guangzhou City, China).

Animals

Male Sprague–Dawley rats (initial weight, 200–250 g; Southern Medical University Animal Experiment Center, Guangzhou City, China) were maintained under standardized conditions and fed a standard rodent diet, with free access to tap water.

Model of ischemia–reperfusion injury

Surgery was undertaken with general anesthesia with 3% napental (30 mg/kg body weight (BW); Southern Medical University Reagent Center). Surgery was performed as described previously [15]. Bilateral flank incisions were made and the left renal pedicle occluded for 60 min, during which time a right nephrectomy was carried out.

The treatment group, i.e., the ischemia–reperfusion + atorvastatin (IR + ATO) group of rats, was given single-dose intraperitoneal ATO (10 mg/kg BW) 30 min before reperfusion. The control group (IR group) received saline vehicle via the intraperitoneal route and underwent a clipping procedure and contralateral nephrectomy as described above. The third group received saline treatment and underwent a sham operation (sham group). That is, bilateral flank incisions were made, the left renal pedicle dissected (but not clamped), and the right kidney removed. Afterwards, the incisions were closed and animals was allowed to recover.

Samples

All animals were anesthetized for 60 min and killed 24 h later. Each group contained eight rats. Blood samples were obtained before surgery and at the time of killing. Urine samples were obtained from metabolism cages 24 h after surgery. Rats were perfused, *via* the aorta, with

100 mL of cold phosphate-buffered saline, and their kidneys removed.

Measurement of serum levels of creatinine (Scr) and the creatinine clearance rate (Ccr)

Scr levels were measured and the Ccr calculated using a Toshiba Automatic Biochemistry Analyzer (Toshiba, Tokyo, Japan). Ccr was calculated on the basis of urinary creatinine, serum creatinine, urine volume, and body weight using the following formula [16]:

$$\text{Ccr} = \text{urinary creatinine } (\mu\text{mol/L}) \times \text{urinary volume (mL/kg/min)} / \text{Scr } (\mu\text{mol/L}).$$

Morphological examination

Tissue for light microscopy was fixed in 10% phosphate-buffered formalin and embedded in paraffin. Five-micrometer-thick sections were processed for staining using periodic acid-Schiff and hematoxylin and eosin (H&E). Morphological analyses were undertaken by an experienced pathologist blinded to the tissue source. The following parameters were chosen to indicate morphological damage to the kidney after ischemia–reperfusion: loss of brush border; formation of tubular casts; tubular dilatation. These parameters were evaluated on a scale of 0–4: not present (0); mild (1); moderate (2); severe (3); very severe (4). Tubular necrosis was graded from none (0) to confluent (4). The extent of cortical necrosis was graded from 0 to 3: no necrosis (0); necrosis confined to the inner third of the cortex (primarily in the S3 segment of the proximal tubules) (1); necrosis extending into the upper third of the cortex (2); extensive necrosis of all areas of the cortex and in which necrotic tubules are present near the kidney surface (3). Each parameter was determined on six or more rats.

Measurement of advanced oxidation protein products (AOPPs)

Plasma levels of AOPP were determined as described previously [17]. To exclude the interference of the turbidity of lipids upon light absorption, samples were diluted 1:5 in PBS and centrifuged (10,000 × g, 1 h, 4°C). Samples below the lipid layer were used for AOPP measurement.

Measurement of malondialdehyde (MDA) levels

The MDA level in the serum was detected using a method described previously [18] and spectrophotometry (UV–Vis Spectrometer 6105; Jenway, Stone, UK). About 2.5 mL of trichloroacetic acid was added to 0.5 mL plasma and the tube left to stand for 10 min at room temperature. After centrifugation at 3500 rpm for 10 min, the supernatant was decanted and the precipitate washed with sulfuric acid. Then, 2.5 mL sulfuric acid

and 3 mL thiobarbituric acid (TBA) in sodium sulfate were added to this precipitate. The coupling of lipid peroxide with TBA was carried out by heating in a boiling water-bath for 30 min. After cooling in cold water, the resulting chromogen was extracted with 4 mL of n-butyl alcohol by vigorous shaking. Separation of the organic phase was facilitated by centrifugation at 3000 rpm for 10 min and its absorbance at 530 nm determined.

Immunohistochemical analyses

Expression of ICAM-1 and MCP-1 was assessed by immunohistochemical analyses as described previously [19]. Sections (thickness, 4 mm) were cut from paraffin blocks, mounted on polylysine-coated slides, and stained (H&E) for light microscopy. Sections were also dewaxed in xylene, rehydrated in a descending series of alcohols, and blocked for endogenous peroxidase and avidin/biotin activities. After blocking with 3% bovine serum albumin (BSA) in phosphate-buffered saline (PBS), sections were incubated with a rabbit polyclonal anti-mouse antibody against ICAM-1 and MCP-1 (1:150 dilution; Santa Cruz Biotechnology, Santa Cruz, CA, USA) overnight at 4°C. Sections were then washed and incubated with a secondary antibody (goat anti-rabbit) using the Evison + Labeled Polymer kit (Dako, Glostrup, Denmark) for 30 min followed by incubation with avidin-biotin-peroxidase complex (Dako) and development with diaminobenzidine chromogen for 5 min. Finally, sections were rinsed in distilled water, counterstained with hematoxylin (Dako), and mounted on glass slides before evaluation under the microscope. Semi-quantitative analyses of immunohistochemistry were undertaken by image analysis software (Image Pro Plus; Media Cybernetics, Rockville, MD, USA).

Reverse transcriptase-polymerase chain reaction (RT-PCR)

Detection of ICAM-1 and MCP-1 mRNA in renal tissue was undertaken. Briefly, total RNA of the renal tissue samples was extracted with an RNA Extraction Agent (TaKaRa Bio, Shiga, Japan) following manufacturer instructions. cDNA was synthesized using a TaKaRa Bio Reverse Transcription kit following manufacturer instructions. RT-PCR was performed using the SYBR Green kit of the TaKaRa Bio Reaction System according to the manufacturer's instructions. The primers for ICAM-1 were: sense, 5'-GCGACCACGGAGCCAATTCTCAT-3'; anti-sense, 5'-TCAGGACCCTAGTCGGAAGATCGAA-3'. The primers for MCP-1 were: sense, 5'-ACGCTTCTGGGCCTGTTGTTCA-3'; anti-sense, 5'-TGGGGCATTAAGTGCATCTGGCT-3'; glyceraldehyde 3-phosphate dehydrogenase was used as the internal control. The result (Ct) from ABI7500 Fast system was analyzed and compared using the $2^{-\Delta\Delta Ct}$ method.

Statistical analyses

One-way analysis of variance (ANOVA) was used to compare the different mean values in the three experimental groups. The least-square difference or Dunnett's T3 test (equal variance not assumed) was used to ascertain significant differences among the groups. Scr was analyzed by repeated-measures ANOVA followed by Dunnett's T3 multiple comparison test. Histological evaluation was assessed by the Kruskal-Wallis test followed by the Rank sum test for multiple comparison. $p < 0.05$ was considered significant. Data are the mean \pm SD. SPSS version 13.0 (SPSS, Chicago, IL, USA) was used for all analyses.

Results

Scr levels were decreased and Ccr levels increased in the IR + ATO group

Sixty minutes of ischemia and subsequent reperfusion caused a decline in renal function, and Scr levels were increased significantly, compared with the sham-operated group ($270.75 \pm 46.84 \mu\text{mol/L}$ vs $61.23 \pm 8.49 \mu\text{mol/L}$; $p < 0.001$) (Figure 1). Decreases in renal function were ameliorated by ATO treatment, which demonstrated increases in Scr levels 24 h after surgery ($189.00 \pm 31.85 \mu\text{mol/L}$), compared with sham-operated animals ($p < 0.05$). Right nephrectomy alone (sham operation) did not increase creatinine levels.

To substantiate the effects of ATO treatment on renal function after ischemia, we analyzed the Ccr (Figure 2). The Ccr in sham-operated animals was $0.127 \pm 0.034 \text{ mL/min}$ and reduced to $0.015 \pm 0.004 \text{ mL/min}$ after ischemia-reperfusion injury. ATO significantly ameliorated these decreases ($0.031 \pm 0.006 \text{ mL/min}$; $p < 0.001$).

Pathological changes in renal tubular cells were alleviated in IR + ATO groups

The morphological changes in tissues during different experiments are shown in Table 1. Representative examples of these experiments are presented in Figure 3. Ischemia-reperfusion injury caused severe damage to epithelial cells of the proximal tubule in the renal cortex. Loss of the brush border and detachment of epithelial cells from the basement membrane caused tubular obstruction, tubular casts, and necrosis (Figure 3B). After ATO treatment, tubular necrosis was markedly reduced and the pathological changes described above mitigated (Figure 3C). Kidneys from sham-operated rats are shown in Figure 3A.

Expression of AOPP and MDA were down-regulated in IR + ATO groups

AOPP concentrations in the IR group ($74.13 \pm 16.81 \mu\text{mol/L}$) differed significantly ($p < 0.001$) from those in the sham group ($43.25 \pm 5.10 \mu\text{mol/L}$) and the ATO

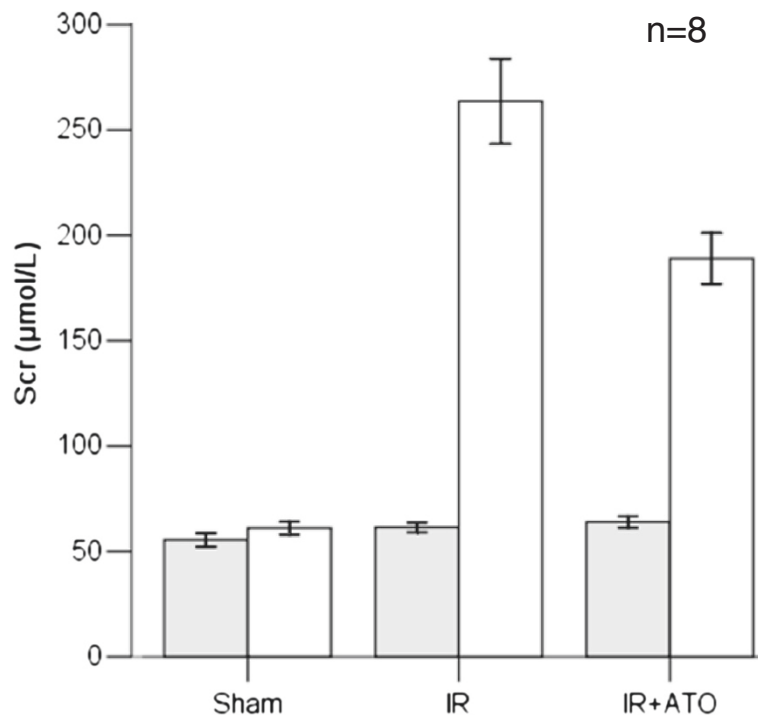


Figure 1 Scr before (shaded square symbol) and 24 h after (□) ischemia–reperfusion injury. Ischemia–reperfusion injury and treatment with saline vehicle resulted in significant elevation of the Scr level after 24 h. Treatment with ATO after ischemia–reperfusion injury (IR + ATO) reduced the impairment of kidney function compared with the IR group (one-way ANOVA test; $p < 0.05$; $n = 8$). A right nephrectomy without ischemia of the contralateral kidney (sham) did not increase the Scr level after 24 h.

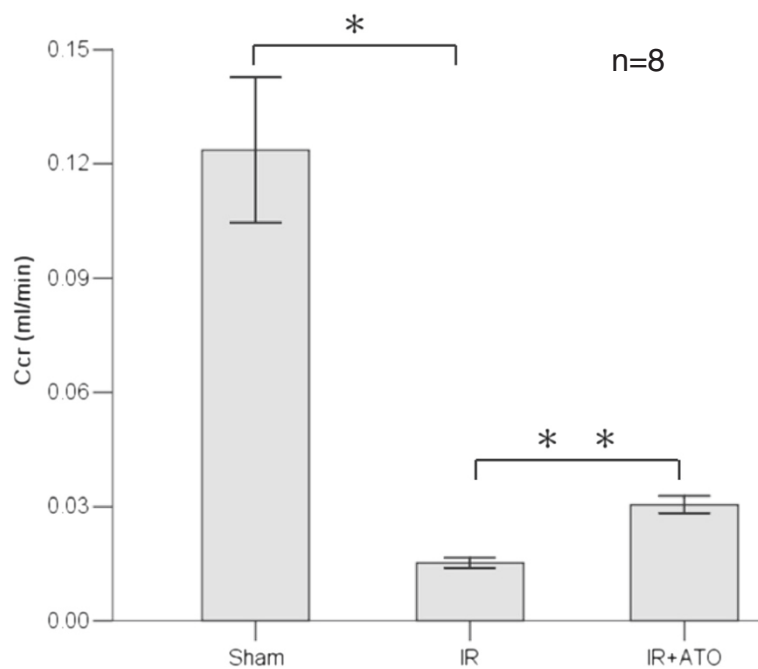


Figure 2 Ccr after 60 min of ischemia without treatment (IR) or with ATO pretreatment (IR + ATO), compared with sham-operated control animals (sham). IR induced decreases in the Ccr (one-way ANOVA test; $*p < 0.001$, compared with the sham group; $n = 8$). Treatment with ATO increased the Ccr (one-way ANOVA test; $**p < 0.001$, compared with the IR group; $n = 8$).

Table 1 Quantitative evaluation of morphological kidney damage

Group	N	Brush border loss	Tubule dilatation	Casts	Necrosis	Extent of necrosis
Sham	6	3.75 ^a	3.92 ^a	3.83 ^a	3.67 ^a	4.25 ^a
IR	6	15.33 ^a	15.33 ^a	15.00 ^a	15.42 ^a	14.50 ^a
IR + ATO	6	9.42 ^a	9.25 ^a	9.67 ^a	9.42 ^a	9.75 ^a

Histologic evaluation of kidney after renal ischemia.

Morphology was scored according to loss of brush borders of proximal tubules, cast formation within tubules, tubule dilatation, and tubule necrosis.

Kruskal–Wallis test. Values represent mean rank. ^a $p < 0.05$; $n = 6$. There is a significant difference between the three groups and according to the rank sum test, and multiple comparison test (values represent the mean, subset for $\alpha = 0.05$).

group ($53.03 \pm 8.99 \mu\text{mol/L}$). AOPP levels were significantly decreased in the ATO group compared with the IR group ($p < 0.005$) (Figure 4A). Serum levels of MDA in the IR group ($13.86 \pm 0.99 \text{ nmol/L}$) differed significantly from those in the sham group ($9.57 \pm 1.41 \text{ nmol/L}$) and the ATO group ($12.04 \pm 1.97 \text{ nmol/L}$). They were decreased significantly in the ATO group compared with the IR group ($p < 0.05$) (Figure 4B).

Protein and mRNA levels of ICAM-1 and MCP-1 were reduced in IR + ATO groups

We addressed the effects of ATO on expression of ICAM-1 and MCP-1. Post-ischemic changes were reflected by the upregulation of adhesion molecules. Representative immunohistologic-stained specimens are shown in Figure 5.

Ischemia–reperfusion injury induced massive upregulation of expression of ICAM-1 and MCP-1 in renal tubules and the cortical peritubular interstitium (Figures 5B and E). ATO blocked ICAM-1 upregulation in the renal tubule and cortical peritubular interstitium (Figure 5C), as well as perivascular and endothelial upregulation of MCP-1 expression (Figure 5F). Expression of ICAM-1 and MCP-1 in control sections from the corresponding areas in the kidneys of sham-operated rats is shown in Figures 5A and D. Ischemia–reperfusion injury caused significant elevation of expression of ICAM-1 and MCP-1, and ATO decreased the upregulation of the expression of ICAM-1 and MCP-1 in the IR group ($p < 0.05$) (Figure 5).

Next, we examined the mRNA changes of ICAM-1 and MCP-1 in the kidneys of rats from each group. Ischemia–reperfusion injury caused significant elevation of expression of ICAM-1 and MCP-1 (Figure 6). ATO

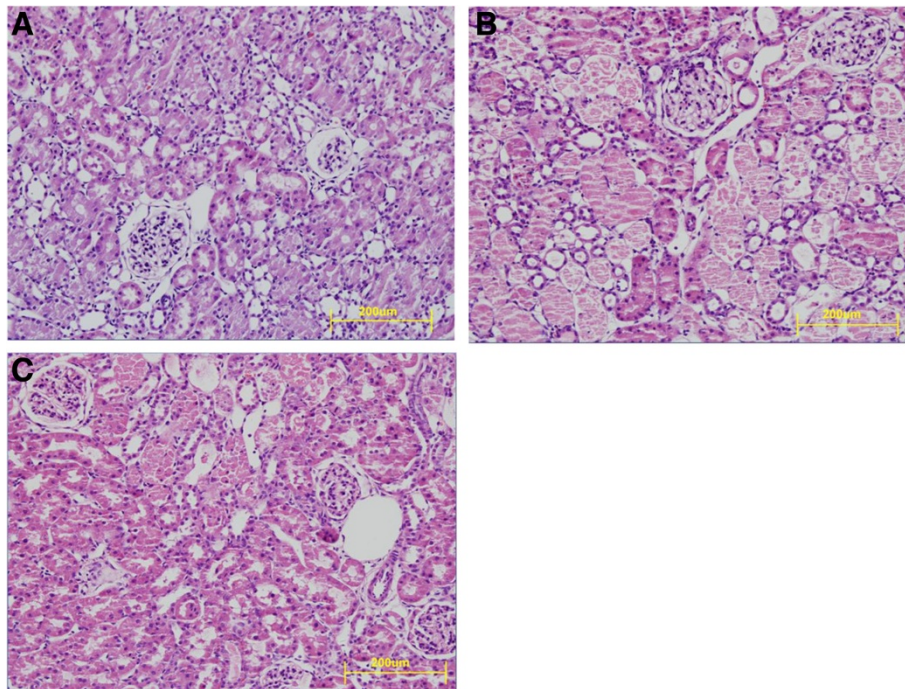


Figure 3 Morphological damage in the renal cortex of proximal tubules. Ischemia–reperfusion caused severe damage, with loss of the brush border, tubular dilatation, detachment of epithelial cells from the basement membrane, and necrosis of tubular casts. (B) ATO treatment (IR + ATO) markedly reduced the pathological changes noted above. (C) Control animals after right nephrectomy without ischemia (sham) exhibited almost no abnormalities in the contralateral kidney. (A) H&E. Magnification, $\times 40$ in A–C.

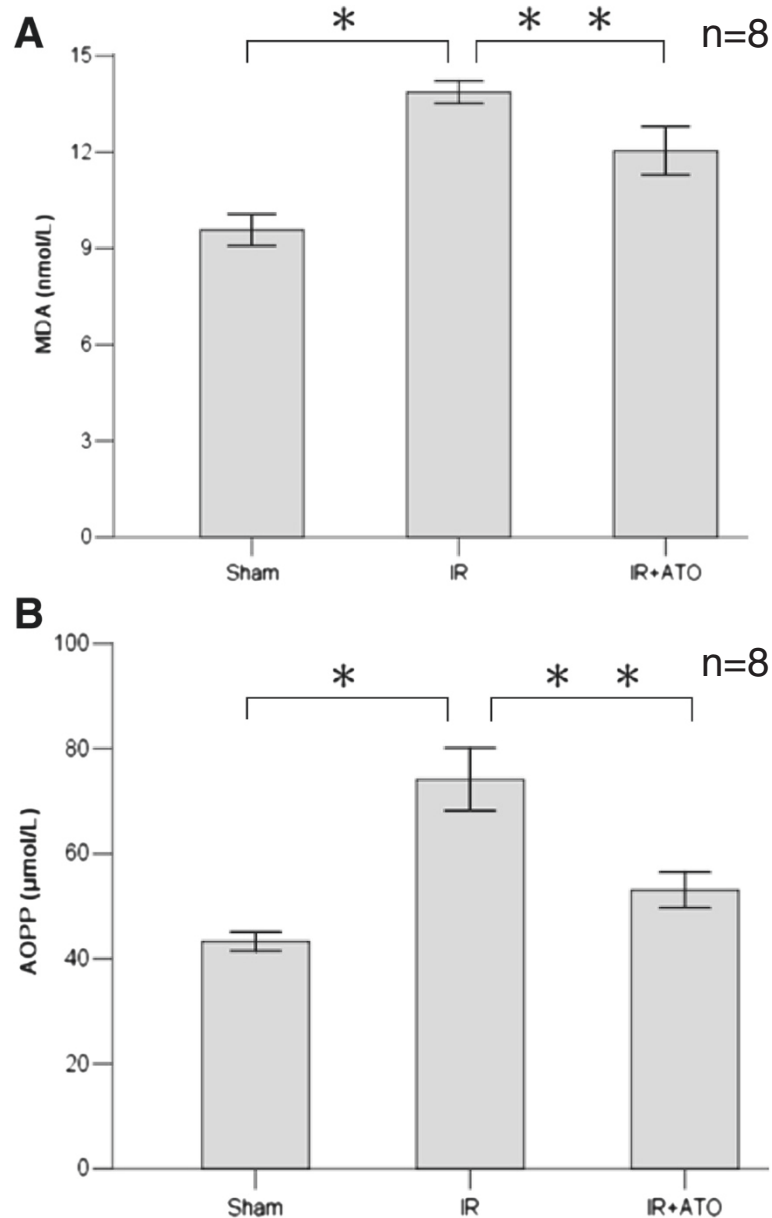


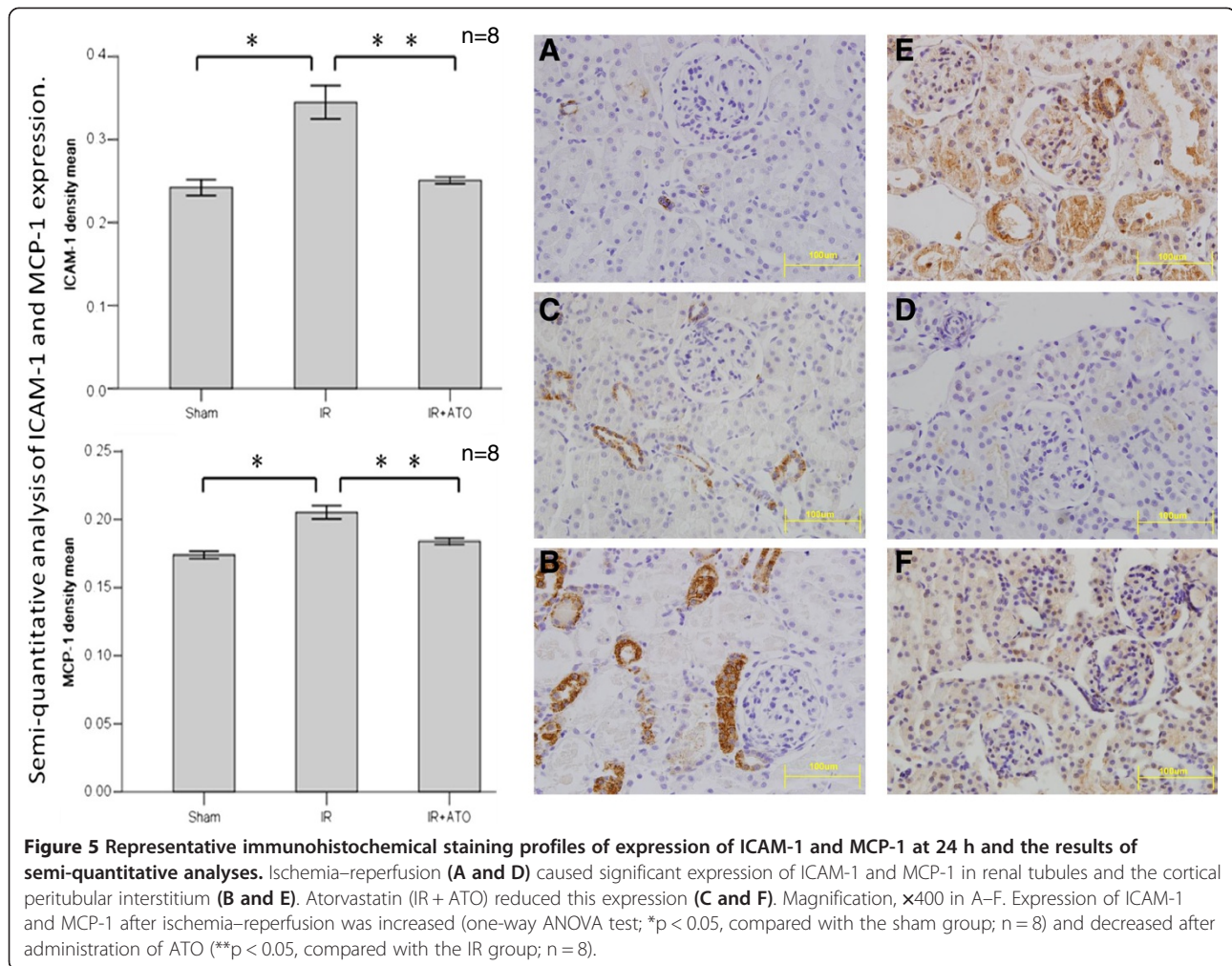
Figure 4 AOPP and MDA levels in different groups. **A** Ischemia–reperfusion induced increases in AOPP levels (one-way ANOVA test; * $p < 0.001$, compared with the sham group; $n = 8$). Treatment with ATO significantly decreased AOPP levels (** $p < 0.005$; compared with the IR group; $n = 8$). **B** MDA levels after ischemia–reperfusion were increased (one-way ANOVA test; * $p < 0.001$, compared with the sham group; $n = 8$) and were decreased after administration of ATO (** $p < 0.05$, compared with the ischemia–reperfusion group; $n = 8$).

decreased the upregulation of expression of ICAM-1 and MCP-1 mRNA in the IR group. The kidneys of the sham-operation group showed extremely low expression of these molecules.

Discussion

The present study demonstrated that, according to the selected biochemical and histological parameters of renal dysfunction, ATO treatment 30 min after ischemia mitigated the course of ischemic ARF in rats. This observation

was supported by several key findings. ATO treatment 30 min after ischemia significantly ameliorated post-ischemic acute tubular necrosis and considerably limited the structural damage after ischemia. Histologically, ATO treatment reduced the damage to proximal tubules in the renal cortex. Untreated animals demonstrated typical changes: loss of the brush border, destruction of epithelial cells, “naked” basement membranes, and tubular obstruction. The major changes in tubules (loss of nuclei and appearance of tubular debris and casts) were remarkable.



Moreover, ATO treatment reduced the serum levels of creatinine and increased the Ccr, which are indicators of impaired glomerular function. As mentioned above, despite intervention being after ischemic injury, ARF could be ameliorated with statin treatment.

There are several possible mechanisms for the protective effects of ATO. Recent studies have shown that ROS, certain inflammatory mediators (e.g., ICAM-1, MCP-1 [7,8]), and infiltration of inflammatory cells are related to renal ischemia–reperfusion injury [9]. During ischemia–reperfusion injury, reperfused tissues generate a great deal of ROS through activation of xanthine oxidase and NADPH oxidase. ROS not only elicit injury to reperfused tissue directly, they also amplify the effect of injury of ROS through peroxidation (oxidative stress). This view is consistent with the notion that oxidative stress increases in critically ill patients with acute kidney injury (AKI) [20].

AOPPs are derived from oxidation-modified albumin (its aggregates or fragments), and are recognized as markers of oxidative damage to proteins, the intensity of

oxidative stress, and inflammation [21]. Accumulation of AOPPs is probably *via* a redox-sensitive inflammatory pathway that causes deterioration in renal dysfunction [22] and it is also a prognostic biomarker for recovery from AKI after coronary artery bypass grafting [23]. Furthermore, ROS also cause renal-cell injury by lipid peroxidation, which results in increased membrane permeability in cells, mitochondria, and lysosomes. MDA is one of several low-molecular-weight end products formed *via* the decomposition of certain primary and secondary lipid peroxidation products [24]. MDA is a reliable estimator of lipid peroxidation [25].

We found that ischemia–reperfusion injury led to an increase in levels of AOPP and MDA that were decreased by ATO treatment. These results suggest that the protection afforded by ATO may be mediated by reducing oxidative stress, particularly by decreasing the production of oxygen free radicals and lipid peroxidation in cells.

Inflammation is another important factor causing ischemia–reperfusion renal damage. Infiltration of inflammatory cells in ischemia–reperfusion injury is

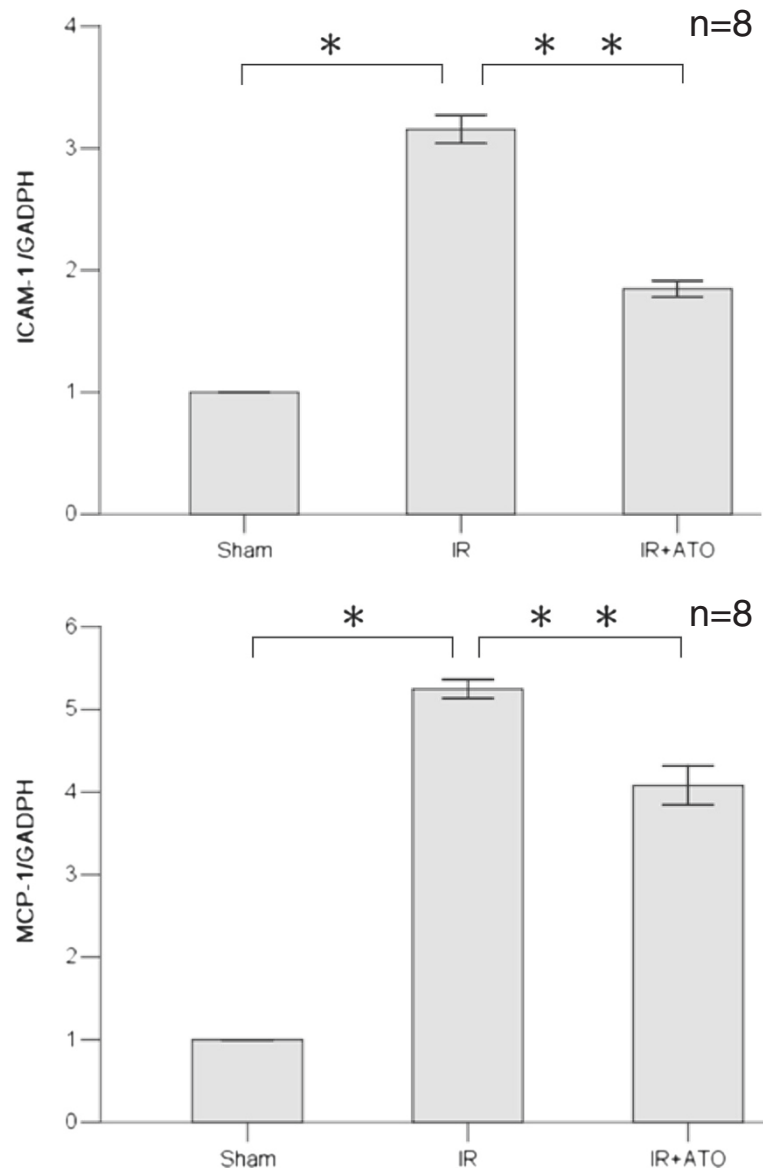


Figure 6 Quantitative RT-PCR analyses of ICAM-1 mRNA and MCP-1 mRNA gene expression in kidneys. Ischemia–reperfusion caused severe increase in expression of ICAM-1 and MCP-1 mRNAs (one-way ANOVA test; * $p < 0.001$ compared with the sham group; $n = 8$). ATO reduced this upregulation (** $p < 0.001$, compared with the IR group; $n = 8$).

accompanied by significant upregulation of expression of adhesion molecules [7,8]. Upregulation of expression of ICAM-1 and MCP-1 in glomeruli, renal tubules, and the peritubular interstitium was also prevented by ATO treatment. Our results showed that even administration of ATO after ischemic ARF elicited anti-inflammatory actions.

The most prominent injury to renal proximal tubular cells is likely to occur during the first 2–4 h of the reperfusion period. Sixty minutes of ischemia does not increase MDA levels, whereas 15 min of reperfusion results in a large increase in kidney lipid peroxidation and

aggravates cell injury [14,15]. Hence, ATO administration 30 min before reperfusion can protect the kidney.

In other studies, statin intervention has been several days before ischemia–reperfusion injury [26,27] but, in the present study, drug intervention was after renal ischemia. AKI is an unpredictable event, so the present study has more clinical relevance compared with previous studies. Haylor et al. reported that even if ATO was administered after clamping the renal hilus but before kidney reperfusion, renal ischemia–reperfusion injury can be improved because of direct inhibition of activated caspase-3 in rats [28]. Our results are consistent with

the findings of that study but we studied whether ATO treatment after renal ischemia also had anti-inflammatory and anti-oxidative stress effects. In their study, ATO did not change Scr levels but in the present study Scr levels were decreased and Ccr levels increased in ATO groups. This finding may be because we determined Scr levels 24 h after reperfusion, whereas in their study it was at 4 h. Scr levels and the Ccr are the most important indices of renal function. Taken together, the renal protection afforded by ATO is not obvious 4 h after reperfusion but its effects continue for ≥ 4 h. The present study showed that renal function could obviously recover in 24 h even if ATO was given after ischemia.

Conclusions

We demonstrated that ATO given after renal ischemia has anti-inflammatory and anti-oxidative stress effects. Treatment of ATO ameliorated renal ischemia-reperfusion injury in vivo. Levels of Scr, AOPP, MDA, ICAM-1, and MCP-1 were reduced but the Ccr increased. Our results suggest that acute administration of ATO after ARF can reduce renal damage and promote recovery of kidney function.

Competing interests

The authors declare that they have no competing interests.

Authors' contributions

HY conceived of the study, participated in its design and coordination, and helped to draft the manuscript. KF participated in the design of the study, carried out the laboratory experiments, analyzed the data, interpreted the results, and wrote the manuscript. JW and WJ carried out the laboratory experiments. All authors approved the final version of the manuscript.

Acknowledgments

We thank Zhiqiang Liu and Manqiu Yang (Nanfang Hospital, Southern Medical University, Guangzhou, People's Republic of China) for technical advice; Nan Jia (Nanfang Hospital) for technical assistance; and Huifeng Zhang (Southern Medical University, People's Republic of China) for statistical analyses. This work was supported by Guangdong Science and Technology Plan Foundation Grant (2010B060900009) to Dr Li.

Author details

¹Division of Nephrology, Huadu Hospital, Southern Medical University, Guangzhou, People's Republic of China. ²Institute of Nephrology Diseases, Nanfang Hospital, Southern Medical University, Guangzhou, People's Republic of China.

Received: 11 March 2013 Accepted: 10 January 2014

Published: 15 January 2014

References

1. Uchino S, Kellum JA, Bellomo R, Doig GS, Morimatsu H, Morgera S, Schetz M, Tan I, Bouman C, Macedo E, Gibney N, Tolwani A, Ronco C: **Acute renal failure in critically ill patients: a multinational, multicenter study.** *JAMA* 2005, **294**:813–818.
2. Schrier RW, Wang W, Poole B, Mitra A: **Acute renal failure: definitions, diagnosis, pathogenesis, and therapy.** *J Clin Invest* 2004, **114**:5–14.
3. Kellum JA, Decker JM: **Use of dopamine in acute renal failure: a meta-analysis.** *Crit Care Med* 2001, **29**:1526–1531.
4. Allgren RL, Marbury TC, Rahman SN, Weisberg LS, Fenves AZ, Lafayette RA, Sweet RM, Genter FC, Kurnik BR, Conger JD, Sayegh MH: **Anaritide in acute tubular necrosis: auriculin anaritide acute renal failure study group.** *N Engl J Med* 1997, **336**:828–834.
5. Hirschberg R, Kopple J, Lipsett P, Benjamin E, Minei J, Albertson T, Munger M, Metzler M, Zaloga G, Murray M, Lowry S, Conger J, McKeown W, O'shea M, Baughman R, Wood K, Haupt M, Kaiser R, Simms H, Warnock D, Summer W, Hintz R, Myers B, Haenftling K, Capra W, et al: **Multicenter clinical trial of recombinant human insulin-like growth factor I in patients with acute renal failure.** *Kidney Int* 1999, **55**:2423–2432.
6. Brinkmann V, Davis MD, Heise CE, Albert R, Cottens S, Hof R, Bruns C, Prieschl E, Baumruker T, Hiestand P, Foster CA, Zollinger M, Lynch KR: **The immune modulator FTY720 targets sphingosine 1-phosphate receptors.** *J Biol Chem* 2002, **277**:21453–21457.
7. Friedewald JJ, Rabb H: **Inflammatory cells in ischemic acute renal failure.** *Kidney Int* 2004, **66**:486–491.
8. Li H, Nord EP: **CD40 ligation stimulates MCP-1 and IL-8 production, TRAF6 recruitment, and MAPK activation in proximal tubule cells.** *Am J Physiol Renal Physiol* 2002, **282**:F1020–F1033.
9. Gueler F, Rong S, Park JK, Fiebeler A, Menne J, Elger M, Mueller DN, Hampich F, Dechend R, Kunter U, Luft FC, Haller H: **Postischemic acute renal failure is reduced by short-term statin treatment in a rat model.** *J Am Soc Nephrol* 2002, **13**:2288–2298.
10. Sabbatini M, Pisani A, Uccello F, Serio V, Serù R, Paternò R, Cianciaruso B, Fuiano G, Andreucci M: **Atorvastatin improves the course of ischemic acute renal failure in aging rats.** *J Am Soc Nephrol* 2004, **15**:901–909.
11. Yokota N, O'Donnell M, Daniels F, Burne-Taney M, Keane W, Kasiske B, Rabb H: **Protective effect of HMG-CoA reductase inhibitor on experimental renal ischemia-reperfusion injury.** *Am J Nephrol* 2003, **23**:13–17.
12. Schouten O, Kok NF, Boersma E, Bax JJ, Feringa HH, Vidakovic R, van Eps RG S, van Sambeek MR, Poldermans D: **Effects of statins on renal function after aortic cross clamping during major vascular surgery.** *Am J Cardiol* 2006, **97**:1383–1385.
13. D'Amico G: **Statins and renal diseases: from primary prevention to renal replacement therapy.** *J Am Soc Nephrol* 2006, **17**:S148–S152.
14. Todorovic Z, Nestic Z, Stojanović R, Basta-Jovanović G, Radojevic-Skodrić S, Velicković R, Chatterjee PK, Thiernemann C, Prostran M: **Acute protective effects of simvastatin in the rat model of renal ischemia-reperfusion injury: it is never too late for the pretreatment?** *J Pharmacol Sci* 2008, **107**:465–470.
15. Paller MS, Hoidal JR, Ferris TF: **Oxygen free radicals in ischemic acute renal failure in the rat.** *J Clin Invest* 1984, **74**:1156–1164.
16. Xue W, Lei J, Li X, Zhang R: **Trigonella foenum graecum seed extract protects kidney function and morphology in diabetic rats via its antioxidant activity.** *Nutr Res* 2011, **31**:555–562.
17. Witko-Sarsat V, Friedlander M, Capeillère-Blandin C, Nguyen-Khoa T, Nguyen AT, Zingraff J, Jungers P, Descamps-Latscha B: **Advanced oxidation protein products as a novel marker of oxidative stress in uremia.** *Kidney Int* 1996, **49**:1304–1313.
18. Satoh K: **Serum lipid peroxide in cerebrovascular disorders determined by a new colorimetric method.** *Clin Chim Acta* 1978, **90**:37–43.
19. Taal MW, Chertow GM, Rennke HG, Gurnani A, Jiang T, Shahsafaei A, Troy JL, Brenner BM, Mackenzie HS: **Mechanisms underlying renoprotection during renin-angiotensin system blockade.** *Am J Physiol Renal Physiol* 2001, **280**:F343–F355.
20. Lentini P, de Cal M, Cruz D, Chronopoulos A, Soni S, Nalesso F, Zanella M, Garzotto F, Brendolan A, Piccinni P, Ronco C: **The role of advanced oxidation protein products in intensive care unit patients with acute kidney injury.** *J Crit Care* 2010, **25**:605–609.
21. Piwowar A: **Advanced oxidation protein products. Part I. Mechanism of the formation, characteristics and property.** *Pol Merkuri Lekarski* 2010, **28**:166–169.
22. Li HY, Hou FF, Zhang X, Chen PY, Liu SX, Feng JX, Liu ZQ, Shan YX, Wang GB, Zhou ZM, Tian JW, Xie D: **Advanced oxidation protein products accelerate renal fibrosis in a remnant kidney model.** *J Am Soc Nephrol* 2007, **18**:528–538.
23. Liang X, Chen Y, Zhuang J, Zhang M, Xiong W, Guo H, Jiang F, Hu P, Guo D, Shi W: **Advanced oxidation protein products as prognostic biomarkers for recovery from acute kidney injury after coronary artery bypass grafting.** *Biomarkers* 2012, **17**:507–512.
24. Janero DR: **Malondialdehyde and thiobarbituric acid-reactivity as diagnostic indices of lipid peroxidation and peroxidative tissue injury.** *Free Radic Biol Med* 1990, **9**:515–540.
25. Botsoglou NA, Fletouris DJ, Papageorgiou GE, Florou-Paner P, Mantis AJ: **Rapid, sensitive, and specific thiobarbituric acid method for measuring**

lipid peroxidation in animal tissue, food, and feedstuff samples. *J Agric Food Chem* 1994, **42**:1931–1937.

26. Tucci Junior S, Molina CA, Cassini MF, Leal DM, Schineider CA, Martins AC: **Lovastatin protects mitochondrial and renal function in kidney ischemia-reperfusion in rats.** *Acta Cir Bras* 2012, **27**:477–481.
27. Gottmann U, Brinkkoetter PT, Hoeger S, Gutermann K, Coutinho ZM, Ruf T, Hui S, Liu Z, Schnuelle P, van der Woude FJ, Braun C, Yard BA: **Atorvastatin donor pretreatment prevents ischemia/reperfusion injury in renal transplantation in rats: possible role for aldose-reductase inhibition.** *Transplantation* 2007, **84**:755–762.
28. Haylor JL, Harris KP, Nicholson ML, Waller HL, Huang Q, Yang B: **Atorvastatin improving renal ischemia reperfusion injury via direct inhibition of active caspase-3 in rats.** *Exp Biol Med (Maywood)* 2011, **236**:755–763.

doi:10.1186/1471-2369-15-14

Cite this article as: Wu et al.: Atorvastatin treatment attenuates renal injury in an experimental model of ischemia–reperfusion in rats. *BMC Nephrology* 2014 **15**:14.

Submit your next manuscript to BioMed Central and take full advantage of:

- Convenient online submission
- Thorough peer review
- No space constraints or color figure charges
- Immediate publication on acceptance
- Inclusion in PubMed, CAS, Scopus and Google Scholar
- Research which is freely available for redistribution

Submit your manuscript at
www.biomedcentral.com/submit

