

Research article

Open Access

## Novel and *de novo* *PKD1* mutations identified by multiple restriction fragment-single strand conformation polymorphism (MRF-SSCP)

Wanna Thongnoppakhun<sup>1</sup>, Chanin Limwongse<sup>1,2</sup>, Kriengsak Vareesangthip<sup>3</sup>, Chintana Sirinavin<sup>1,2</sup>, Duangkamon Bunditworapoom<sup>2</sup>, Nanyawan Rungroj<sup>1</sup> and Pa-thai Yenchitsomanus\*<sup>1,4</sup>

Address: <sup>1</sup>Division of Molecular Genetics, Department of Research and Development, Faculty of Medicine Siriraj Hospital, Mahidol University, Bangkok 10700, Thailand, <sup>2</sup>Division of Medical Genetics, Department of Medicine, Faculty of Medicine Siriraj Hospital, Mahidol University, Bangkok 10700, Thailand, <sup>3</sup>Division of Nephrology, Department of Medicine, Faculty of Medicine Siriraj Hospital, Mahidol University, Bangkok 10700, Thailand and <sup>4</sup>Division of Medical Molecular Biology, Department of Research and Development, Faculty of Medicine Siriraj Hospital, Mahidol University, Bangkok 10700, Thailand

Email: Wanna Thongnoppakhun - siwtn@mucc.mahidol.ac.th; Chanin Limwongse - siclw@mucc.mahidol.ac.th; Kriengsak Vareesangthip - sikwn@mucc.mahidol.ac.th; Chintana Sirinavin - sicsr@mucc.mahidol.ac.th; Duangkamon Bunditworapoom - g4237439@student.mahidol.ac.th; Nanyawan Rungroj - nrungroj@yahoo.com; Pa-thai Yenchitsomanus\* - grpye@mucc.mahidol.ac.th

\* Corresponding author

Published: 03 February 2004

Received: 20 November 2003

BMC Medical Genetics 2004, 5:2

Accepted: 03 February 2004

This article is available from: <http://www.biomedcentral.com/1471-2350/5/2>

© 2004 Thongnoppakhun et al; licensee BioMed Central Ltd. This is an Open Access article: verbatim copying and redistribution of this article are permitted in all media for any purpose, provided this notice is preserved along with the article's original URL.

### Abstract

**Background:** We have previously developed a long RT-PCR method for selective amplification of full-length *PKD1* transcripts (13.6 kb) and a long-range PCR for amplification in the reiterated region (18 kb) covering exons 14 and 34 of the *PKD1* gene. These have provided us with an opportunity to study *PKD1* mutations especially in its reiterated region which is difficult to examine. In this report, we have further developed the method of multiple restriction fragment-single strand conformation polymorphism (MRF-SSCP) for analysis of *PKD1* mutations in the patients with autosomal dominant polycystic kidney disease (ADPKD). Novel and *de novo* *PKD1* mutations are identified and reported.

**Methods:** Full-length *PKD1* cDNA isolated from the patients with ADPKD was fractionated into nine overlapping segments by nested-PCR. Each segment was digested with sets of combined restriction endonucleases before the SSCP analysis. The fragments with aberrant migration were mapped, isolated, and sequenced. The presence of mutation was confirmed by the long-range genomic DNA amplification in the *PKD1* region, sequencing, direct mutation detection, and segregation analysis in the affected family.

**Results:** Five *PKD1* mutations identified are two frameshift mutations caused by two di-nucleotide (c. 5225\_5226delAG and c.9451\_9452delAT) deletions, a nonsense (Q1828X, c.5693C>T) mutation, a splicing defect attributable to 31 nucleotide deletion (g.33184\_33214del31), and an in-frame deletion (L3287del, c.10070\_10072delCTC). All mutations occurred within the reiterated region of the gene involving exons 15, 26, 15, 19 and 29, respectively. Three mutations (one frameshift, splicing defect, and in-frame deletion) are novel and two (one frameshift and nonsense) known. In addition, two mutations (nonsense and splicing defect) are possibly *de novo*.

**Conclusion:** The MRF-SSCP method has been developed to analyze PCR products generated by the long RT-PCR and nested-PCR technique for screening *PKD1* mutations in the full-length cDNA. Five mutations identified were all in the reiterated region of this gene, three of which were novel. The presence of *de novo* *PKD1* mutations indicates that this gene is prone to mutations.

## Background

Autosomal dominant polycystic kidney disease (ADPKD; MIM# 173900) is a potentially fatal disease and one of the most common inherited disorders in humans, affecting approximately 1 per 1,000 individuals. The characteristic abnormality is the presence of multiple fluid-filled cysts in both kidneys causing defective functions, ultimately leading to end stage renal disease (ESRD) [1]. Liver cysts and other extra-renal manifestations such as cerebral aneurysm and mitral valve defect, can also be observed [2]. Two known genes are responsible for this disease: *PKD1* (MIM# 601313) at 16p13.3 [3-6] and *PKD2* (MIM# 173910) at 4q21-23 [7]. The presence of the third locus responsible for this disease is still controversial [8,9]. A majority of cases (85%) is caused by mutations in *PKD1*.

*PKD1* gene spans >50 kb of genomic DNA, containing 46 exons and transcribing ~14-kb mRNA [3-6] that encodes a large membrane-associated glycoprotein, polycystin-1, comprising 4,302 amino acids. The protein possibly participates in the signal-transduction pathway by coordinating with polycystin-2, the product of *PKD2*, in mediating mechanosensory calcium mobilization by function as flow-sensitive mechanosensors in the primary cilium of renal epithelium [10]. A failure of fluid-flow sensation of the cells may disturb tissue morphogenesis, triggering abnormal cell proliferation and cyst formation. Renal cysts are likely to develop after a second-hit or somatic mutation, which inactivates the inherited normal allele of the same locus, or occasionally an allele of another counterpart locus (i.e. *PKD2* or vice versa), giving rise to a trans-heterozygous event [11].

To date, at least 250 unique *PKD1* mutations have been identified as listed in the Human Gene Mutation Database (HGMD, <http://uwcmml1s.uwcm.ac.uk/uwcm/mg/search/120293.html>) [12] and also reported more recently [13-15]. Three-fourths of mutations in this gene result in truncated protein products, suggesting its inactivation or loss-of-function mechanism. Most previous studies have found unclear genotype-phenotype correlations for *PKD1* mutations. However, a recent report has shown the significant correlation between the position of mutation and disease severity (more severe in more 5' mutation), raising the questions whether *PKD1* mutations simply inactivate all products of the gene [16]. Mutation databases from worldwide population and additional experiments would be useful to unravel the precise mechanism by which *PKD1* mutations cause diverse phenotypes.

Analysis of *PKD1* mutations is labor-intensive, time-consuming, and expensive because of its large size, the presence of a very high GC content, and most severely the presence of more than six homologous genes, which are

highly homologous to the 5' region (exons 1-33) of *PKD1* [4,17]. The latter has made mutation detection in this gene much more difficult. The methods successfully developed for mutation analysis of this gene are based on discrimination of *PKD1* from the non-functional homologous genes, by enrichment of *PKD1* sequence while suppressing the homologous ones to undetectable levels. *PKD1* mutations occur throughout the gene with apparently no mutational "hot-spots", rendering characterization of all disease causing *PKD1* mutations in various ethnic groups essential for comprehension of molecular mechanism of the disease and for providing diagnostic genetic testing. Our group aim to fulfill *PKD1*-mutation database of Thai patients and have previously developed a long RT-PCR technique for isolation of the entire coding sequence of *PKD1* (~13 kb) for the analysis of its mutations without interference from the homologous sequences [18]. The analysis of *PKD1* transcript provides an opportunity for *ex vivo* study of splicing defects prior to identification of causative mutations. In addition, a long-range PCR (LR-PCR) for amplification of *PKD1*-specific genomic sequence with the length of about 18 kb in the reiterated region covering exons 14-33 has also been established for further analysis of *PKD1* [19]. Using these techniques, we have previously identified and reported two mutations causing splicing defects of *PKD1* transcripts in Thai families with ADPKD [19,20].

To increase efficiency of screening and identification for other types of mutations in the reiterated region of *PKD1*, we have further developed a multiple restriction fragment-single strand conformation polymorphism (MRF-SSCP) method [21], in addition to the long RT-PCR and LR-PCR techniques. Since the SSCP method is more efficient for screening mutation in a short fragment (less than 300 bp), we used different sets of restriction endonucleases for digestions of each *PKD1*-cDNA segment so that the entire segment was efficiently screened. We have applied this procedure for screening and identifying *PKD1* mutations in Thai patients with ADPKD. Here, we report three novel and two recurrent mutations of *PKD1* identified in Thai patients; two mutations are possibly *de novo*.

## Methods

### ADPKD families and linkage study

Ten unrelated Thai families with ADPKD attending our clinics at Divisions of Medical Genetics and Nephrology, Department of Medicine, Faculty of Medicine Siriraj Hospital, Bangkok, were included in this study. ADPKD was diagnosed according to established clinical and genetic criteria [22]. Research investigation was conducted in accordance with the Faculty of Medicine Siriraj Hospital Ethics Committee's guidelines and in accordance with the Helsinki Declaration. Blood samples were collected after informed consent for RNA and DNA preparations. Link-

**Table 1: PCR primers and conditions for amplifications of PKD1 cDNA and DNA**

Primer	Primer Sequence (5'→3')	Nucleotide Position	Location in PKD1 Transcript	PCR Product Size (bp)	Annealing Temperature (°C)	Mg <sup>2+</sup> Conc. (mM)
<b>cDNA amplification</b>						
<b>TH1F</b>	<b>CTGGGGACGGCGGGCCATGCG</b>	<b>175–196<sup>a</sup></b>	<b>5' UTR</b>	<b>13,634</b>	<b>68</b>	<b>1.2</b>
<b>TH1B</b>	<b>GGCCTGGGGCAAGGGAGGATGACAA</b>	<b>13808–13784<sup>a</sup></b>	<b>3' UTR</b>			
SI1F	ACGGCGGGGCCATGCGCGCGTCCCTAAC	181–210 <sup>a</sup>	5'UTR	1,554	72	3.0
SI1B	CAGTGCTCGGCTGGCTGGGTGGCTCC	1734–1705 <sup>a</sup>	Exon 7			
SI2F	AGGAGCCTAGACGTGTGGATCG	1595–1616 <sup>a</sup>	Exon 6–7	1,678	65	1.5
SI2B	CCTGCATCCTGTTCATCCGCTC	3272–3251 <sup>a</sup>	Exon 13			
SI3F	CATCAACGACAAGCAGTCCCT	3115–3135 <sup>a</sup>	Exon 12	1,575	60	1.5
SI3B	CCACGGCCACAGCAGAGAA	4689–4670 <sup>a</sup>	Exon 15			
SI4F	ATCTCTGCTGCCAATGACTCAG	4562–4583 <sup>a</sup>	Exon 15	1,473	60	1.5
SI4B	GGGAAGCTGTGGAGAAAC	6034–6015 <sup>a</sup>	Exon 15			
SI5F	TCAATGCCTCCAACGCAGTCAGC	5808–5830 <sup>a</sup>	Exon 15	1,663	65	1.5
SI5B	GTCTCATCCAGCCAGCGTCTTG	7470–7447 <sup>a</sup>	Exon 18			
SI6F	AGCAGCGGCTCCAAGCGAG	7400–7418 <sup>a</sup>	Exon 17	1,506	65	3.0
SI6R	CACAACGGAGTTGGCGGAGT	8905–8886 <sup>a</sup>	Exon 23			
SI7F	CCTTTCCTTTGGCTATATCAG	8709–8730 <sup>a</sup>	Exon 23	1,518	60	1.5
SI7B	CCAGGTAGACGGATAGACAAC	10226–10205 <sup>a</sup>	Exon 30			
SI8F	GCCACCTGCTGCGTTCTCCT	10052–10071 <sup>a</sup>	Exon 29	1,539	65	1.5
SI8B	CGTCCCCGAGCCATTGTGAG	11590–11571 <sup>a</sup>	Exon 40			
SI9F	CTTCAGCACCAGCGATTACGACGTT	11533–11557 <sup>a</sup>	Exon 40	1,650	65	1.5
SI9B	AGAAAGTAATACTGAGCGGTGCCACTC	13182–13155 <sup>a</sup>	3' UTR			
<b>Genomic DNA amplification</b>						
<b>SI3.1F</b>	<b>GCAACGTCACCGTGAAC TACAACGTAACCG</b>	<b>26340–26369<sup>b</sup></b>	<b>Exon 13</b>	<b>18,099</b>	<b>61</b>	<b>1.0</b>
<b>Ex34B</b>	<b>GAGCAGGTCCGTTTCCATGTGGGTGTCTTG</b>	<b>44438–44409<sup>b</sup></b>	<b>Exon 34</b>			
SI4.2F	CTTCCCACCAACACACGGTACAGC	29064–29039	Exon 15	486	62	1.0
SI4.2B	AGGCCACTCACAGGCACCTGCACATC'	29523–29498	Exon 15			
SI4.1F	AGCCAACGCCACCGTGGAA	29476–29494 <sup>b</sup>	Exon 15	372	60	1.5
SI4.1B	GCAGCCAGCAGGATCTGAAAATG	29847–29825 <sup>b</sup>	Exon 15			
SI6.1F	CGCTGTGCACGCCCTCACACCAAGGT	32835–32861 <sup>b</sup>	Exon 18	480	60	1.5
SI6.1B	GTGCAGCCAGACTGTGAGCCCCGTTGC	33314–33288 <sup>b</sup>	Exon 20			
SI7.2F	GGAGTTACCATCTGAACCTCTCCAG	38978–39002 <sup>b</sup>	Exon 25	698	60	1.0
SI7.2B	CAGGATGAACACACGAGCCCTTCACAC	39675–39649 <sup>b</sup>	IVS 26			
SI8L	TTCTTTGACAAGCACATCTGGC	41600–41579	Exon 29	336	57	1.0
SI7B	CCAGGTAGACGGGATAGACAAC	41915–41894	Exon 30			

<sup>a</sup>The nucleotide positions are according to HUMPKD1A, GenBank Accession No. L33243. <sup>b</sup>The nucleotide positions are according to HUMPKD1GEN, GenBank Accession No. L39891. Bold faces are primers for long-range PCR of which products were used as PKD1-specific templates for nested PCRs.

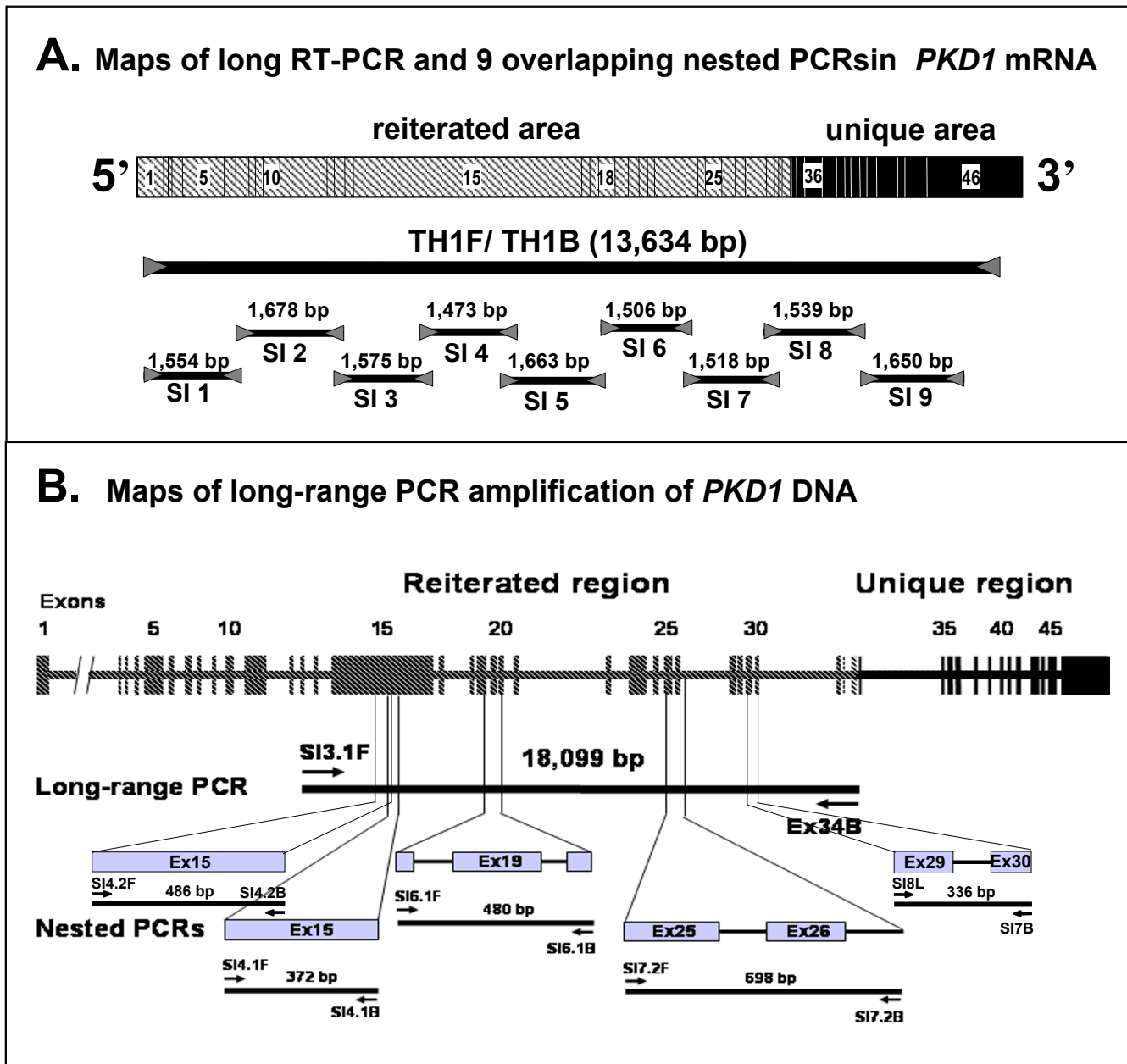
age analysis was performed by using 5 polymorphic DNA markers on chromosome 16p including D16S85 (3' HVR), SM7, 16AC2.5, SM6, and KG8 as previously described [19].

**Full-length PKD1 cDNA amplification by long RT-PCR**

RNA prepared from fresh blood sample was used for full-length PKD1 cDNA (~13 kb) amplification by long RT-PCR. The full-length cDNA was then fractionated into nine overlapping fragments by nested-PCR methods as previously described [18]. The sizes of nested-PCR fragments were 1,473–1,678 bp (Table 1 and Figure 1A). The product with abnormal size as shown by agarose gel electrophoresis was further analyzed by restriction endonuclease mapping and sequencing to directly identify abnormal RNA splicing.

**Screening of PKD1 mutation by MRF-SSCP**

The nested-PCR fragments from PKD1 cDNA showing no abnormality in size were further screened for mutation by a multiple restriction fragment-single strand conformation polymorphism (MRF-SSCP) method. This method firstly developed by Lee et al. [21] was modified to use silver staining instead of radioactive detection. A relatively large PCR-product (1–2 kb) for SSCP method could be analyzed since it was fractionated into several short fragments by combined digestions with restriction endonucleases. The restriction enzymes were selected by consideration of their restriction maps on the sequences so that each digestion produced 6–7 fragments with the average size about 200–300 bp and resulted in a discrete size distribution on the SSCP gel. Each nested-PCR fragment was digested with at least two sets of combined restriction endonucleases to generate overlapping-digested products, in order to approximate the position of



**Figure 1**  
**A.** Schematic illustration of *PKD1* mRNA, long RT-PCR product, and nine overlapping nested-PCR fragments (SI 1–SI 9) used for the MRF-SSCP analysis. **B.** Maps of the regions in *PKD1* amplified by long-range PCR and nested-PCR.

mutation in the shifted fragment on the SSCP gel (Table 2).

The digestion of nested-PCR fragments was performed in a final volume of 25  $\mu$ l, containing 10  $\mu$ l of DNA, 2.5  $\mu$ l of 10 $\times$  buffer, and 2–5 units of enzymes (e.g. *Ava* II + *Hinf*

I or *Bgl* I + *Hha* I), in the presence or absence of BSA. The reaction mixture was incubated either at 37, 60 or 65 $^{\circ}$ C according to the enzymes used and following the manufacturer's recommendations. Five  $\mu$ l of the digested-PCR product were mixed with 5  $\mu$ l of 5 $\times$  TBE and 10  $\mu$ l of SSCP-loading dye (95% formamide, 0.05% bromophenol

**Table 2: MRF-SSCP for mutation analysis of the full-length PKD1 cDNA**

PCR Fragment from PKD1-cDNA	Size (bp) before endonuclease digestion	Restriction endonuclease used	Restriction fragment length (bp) in MRF-SSCP (5' > 3')
SI 1	1,554	<i>Pvu</i> II+ <i>Xcm</i> I+ <i>Ava</i> II	209, 318, 99, 249, 294, 385
		<i>Afl</i> III+ <i>Sac</i> I+ <i>Ava</i> II	209, 282, 384, 238, 312, 129
SI 2	1,678	<i>Pvu</i> II+ <i>Hinf</i> I	429, 93, 366, 277, 295, 218
		<i>Sma</i> I+ <i>Bgl</i> I	108, 245, 292, 605, 123, 306
SI 3	1,575	<i>Bgl</i> I+ <i>Hinf</i> I	233, 81, 424, 198, 325, 202, 112
		<i>Taq</i> I	429, 215, 187, 243, 501
SI 4	1,473	<i>Bgl</i> I+ <i>Hha</i> I	131, 159, 96, 380, 108, 476, 123
		<i>Ava</i> II	178, 252, 475, 204, 253, 111
SI 5	1,663	<i>Sau</i> 3A I+ <i>Bgl</i> I	127, 387, 377, 188, 226, 169, 189
		<i>Ava</i> II+ <i>Bgl</i> I	116, 324, 423, 216, 141, 85, 358
SI 6	1,506	<i>Ava</i> II+ <i>Bgl</i> I	173, 307, 294, 402, 187, 143
		<i>Bst</i> U I+ <i>Bst</i> E II	313, 344, 265, 190, 70, 239, 85
SI 7	1,518	<i>Bst</i> U I+ <i>Hinf</i> I	112, 287, 424, 389, 201, 105
		<i>Ava</i> II+ <i>Hinf</i> I	197, 202, 398, 315, 192, 109, 105
SI 8	1,539	<i>Pvu</i> II+ <i>Pst</i> I+ <i>Bst</i> E II	337, 199, 233, 505, 218, 185
		<i>Taq</i> I+ <i>Bgl</i> I	190, 141, 222, 344, 474, 98, 208
SI 9	1,650	<i>Pvu</i> II	190, 351, 81, 180, 453, 135, 12, 248
		<i>Taq</i> I+ <i>Bgl</i> I	288, 318, 197, 529, 84, 234

blue, 0.05% xylene cyanol, 20 mM EDTA and 10 mM NaOH). The total mixture was heat-denatured at 95°C for 10 min before loading onto the vertical electrophoresis set (size: 17 × 15 × 0.8 cm<sup>3</sup>) of 10% polyacrylamide gel containing 5% glycerol. The electrophoresis was run at a constant current (20 mA) and room temperature for 4–7 h; the running time was longer for a larger size of the digested fragments. DNA fragments on the gel were stained with silver nitrate [23]. After that, the gel was placed between two sheets of cellophane, left at room temperature to dry, and kept as a record.

The fragment with mobility shift was amplified with a newly designed pair of primers. The PCR product was purified and subjected to a direct sequencing using ABI PRISM™ BigDye™ Terminator Cycle Sequencing Ready Reaction Kit and ABI PRISM 310 Automated DNA Sequencer (PE Applied Biosystems, Foster City, CA, USA).

#### Genomic DNA analysis

A long-range PCR (LR-PCR) was performed to amplify genomic DNA in the *PKD1* region covering the nucleotide positions 26340–44438 (18,099 bp). The amplified product was then used as template for nested-PCRs (Figure 1B). The primers used for nested-PCRs are listed in Table 1. The methods for LR-PCR and nested-PCR have been previously described [19]. Briefly, the reaction was performed in a total volume of 25-μl containing 2 μl of the diluted LR-PCR product, 400 nM of each primer, 200 μM dNTP mixture, 10 mM Tris-HCl (pH 8.3), 50 mM KCl, 1.25 unit AmpliTaqGold™ (PE Applied Biosystems) or

IMMOLASE™ DNA polymerase (Bioline USA Inc.), 10% DMSO, and an optimal concentration of MgCl<sub>2</sub>. The nested-PCR product was purified for DNA sequencing to confirm the nucleotide change observed in the *PKD1* cDNA.

Once the mutation was identified, a simple detection method was developed for direct mutation and segregation analysis in the affected family. In addition, the mutation was examined in 56 DNA samples from unrelated normal individuals (112 chromosomes). The disease-causing mutation should not be observed in these normal DNA samples.

#### Results

Of ten families studied, ADPKD was found to be *PKD1*-linked or probable *PKD1*-linked by linkage (haplotype) analysis using 5 polymorphic markers in the *PKD1* region on chromosome 16p in eight families. The results of haplotype analysis in two families were inconclusive because of small number of family members.

The RNA samples from the probands of these ten families were analyzed by the long RT-PCR and nested-PCR methods. The result showed an about 200 bp shorter nested-PCR fragment (SI 6) of *PKD1* cDNA from the proband (II-3) of family PK066, indicating an abnormal *PKD1*-mRNA splicing. No abnormality in size was, however, observed for all nested-PCR fragments of *PKD1* cDNA from the other probands; they were then further analyzed by the MRF-SSCP method. A nonsense mutation and small dele-

**Table 3: PKD1 mutations in Thai families identified by our group**

Family	Mutation	Location	RNA Splicing Defect (experimentally determined)	Effect on Polycystin-I (theoretically deduced)	Reference
PK015 <sup>a</sup>	IVS13-2A>T	IVS13	Del the first 74 nt of exon 14	FS at 1055 (PKD IV-terminal deletion)	Thongnoppakhun et al., 2000 [19]
PK039 <sup>a</sup>	c.5225_5226delAG (g.29124_29125delAG)	Exon 15	-	FS at 1672 (PKD XI – terminal deletion)	This study, Watnick et al., 1999[24], Rossetti et al., 2002 [15]
PK031 <sup>a,b</sup>	Q1828X (c.5693C>T)	Exon 15	-	Stop at 1828 (PKD XIII-terminal deletion)	This study, Rossetti et al., 2002 [15]
PK066 <sup>b</sup>	g.33184_33214del31 (31bpE19119-2 to E19119+29 or c.7913_7914+29del31)	Ex19-IVS19	Exon 19 skipping	FS at 2498 (REJ module-terminal deletion)	This study (Novel)
PK069 <sup>a</sup>	c.9451_9452delAT (g.39376_39377delAT)	Exon 26	-	FS at 3082 (TM I-terminal deletion)	This study (Novel)
PK002 <sup>a</sup>	L3287del (c.10070_10072delCTC or g.41669_41671delCTC)	Exon 29	-	Inframe deletion of L3287 (TM 2)	This study (Novel)
PK009 <sup>a</sup>	IVS43+14del20	IVS43	Exon 43 skipping	Inframe deletion of 3904–4001 (TM 7–9)	Rungroj et al., 2001 [20]

<sup>a</sup> Segregation of mutation with disease phenotype <sup>b</sup> *De novo* mutation is likely. Reference sequences for DNA and mRNA of *PKD1* are GenBank Accession No. L39891 and L33243, respectively.

tions causing either frameshift or inframe translations were identified in the probands of four families. The details of mutation identified in the five probands and their families are summarized in Table 3 and described below.

#### Splicing defect

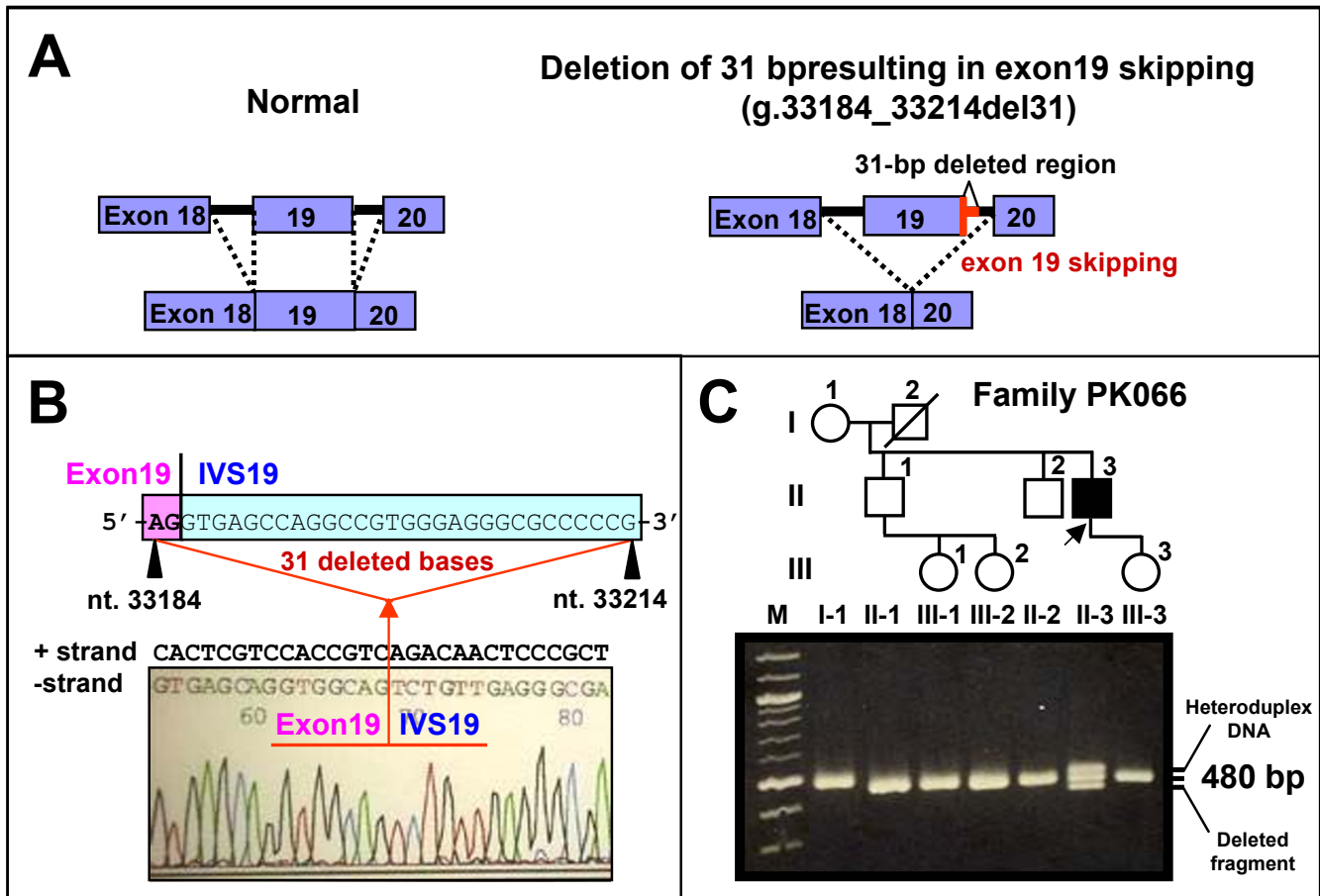
The proband (II-3) of family PK066 was the only one in this family who had the disease with chronic renal failure at the age of 54 years. His father died from coronary heart disease at the age of 70 years and his mother was still healthy at the age of 81 years. It was possible that the haplotype carrying defective *PKD1* in the patient might be inherited from his father (data not shown). As it seems that the father did not have the disease, a *de novo* *PKD1* mutation in this family was suspected. The analysis of nested-PCR fragments of *PKD1* cDNA from the proband (II-3) of this family showed a possible deletion of about 200 bp in one fragment (SI 6), which was amplified by SI6F/SI6R primers (in the region between the nucleotides 7400 and 8905), in one allele. The location of possible deletion site was examined by restriction endonuclease mapping on the nested-PCR fragment (data not shown) and by amplification with additional pair of primers (SI6.1F/SI6.1B), covering between the nucleotides 7657 and 7978 in the region of exons 18–20, for direct sequencing. The results showed that an entire sequence of exon 19 was missing from the deleted nested-PCR fragment (Figure 2A). Further analysis of genomic DNA of *PKD1* revealed a novel 31-bp deletion in the region between the nucleotides 33184–33214 (g.33184\_33214del31),

involving the last two nucleotides of exon 19 and twenty-nine nucleotides in the first part of intron 19, causing skipping of all sequence of exon 19 (Figure 2A and 2B).

Direct detection of this 31-bp deletion in genomic DNA samples of the family members could be conducted by LR-PCR of *PKD1* and nested PCR using the pair of SI6.1F/SI6.1B primers. The result showed that only the proband carried this novel deletion; none of other six family members including the patient's mother had the mutation; thus, it is likely to be a *de novo* *PKD1* mutation (Figure 2C).

#### Nonsense mutation

In family PK031, the proband (I-1) was 55 years old who had ADPKD at 43 years. His son and daughter also had multiple renal cysts; however, other 55 members in the family were not affected by this disease, indicating that the proband had a *de novo* *PKD1* mutation that was inherited to his son and daughter. The MRF-SSCP analysis of nested-PCR fragment amplified with SI4F/SI4B primers (fragment SI 4) from *PKD1* cDNA of the proband (I-1) of the family PK031 showed mobility shifts of restriction fragments digested with *Bgl* I + *Hha* I and also with *Ava* II (Figure 3A). These were also confirmed by the SSCP analysis of individual restriction fragments isolated from agarose gels before the analysis (data not shown). The mobility shifts occurred within the restriction fragments with the sizes of 476 and 253 bp when digested with *Bgl* I + *Hha* I and with *Ava* II, respectively (Figure 3A), corresponding to nucleotides between the positions 5670 and



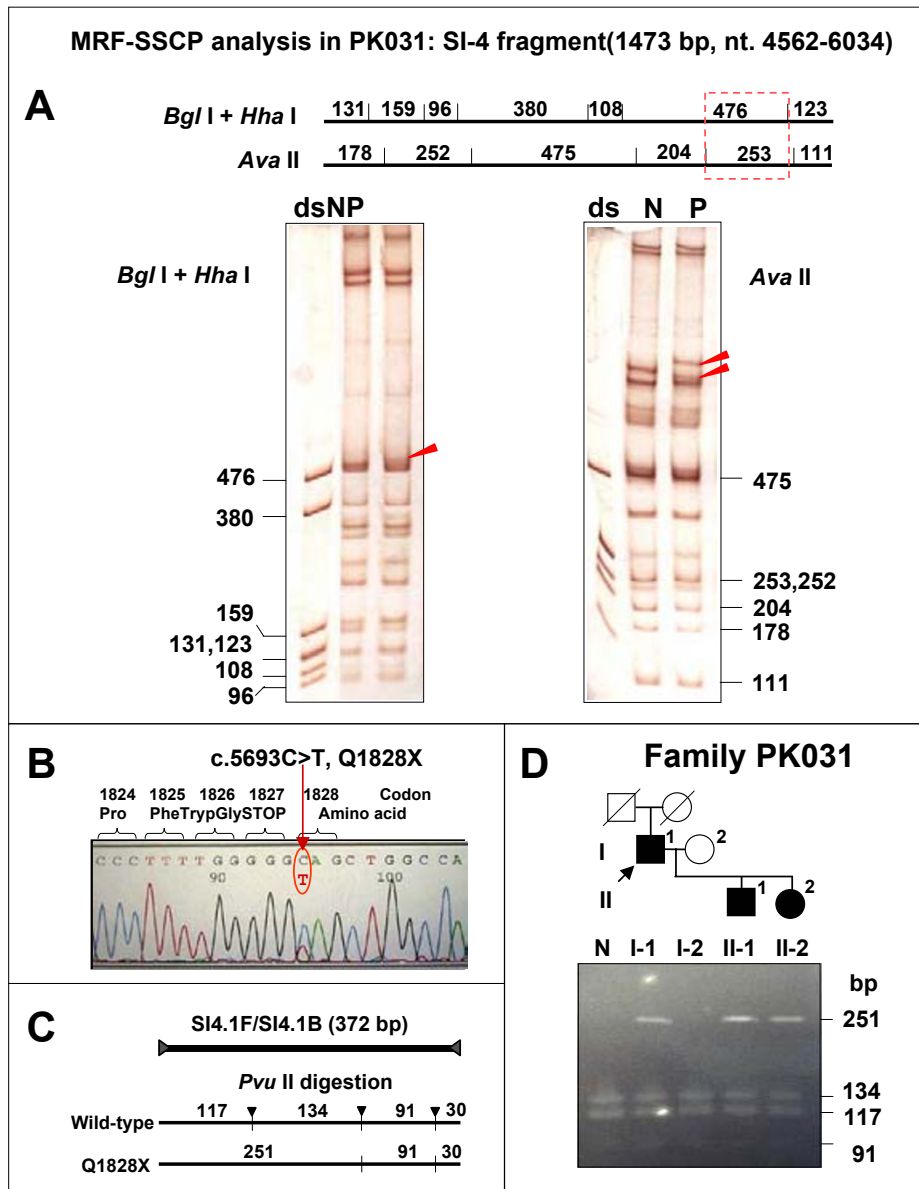
**Figure 2**  
**Novel PKD1-splicing defect identified in family PK066. A. Diagram showing splicing defect resulted from a deletion of 31 bp in PKD1.** The deletion of 31 bp (g.33184\_33214del31) involves the end of exon 19, splice-donor site and a part of intron 19, resulting in exon 19 skipping in the PKD1-RNA transcripts. **B. Direct sequencing analysis of PKD1-genomic DNA from the proband.** The sequencing result shows the 31-nucleotide deletion including the two last nucleotides in exon 19 and the first twenty-nine nucleotides in adjacent intron 19 (g.33184\_33214del31) as compared with the sequence of HUMPKD1GEN, GenBank Accession No. L39891. **C. Direct detection of the 31-bp deletion (g.33184\_33214del31) in the family PK066.** The detection of 31-bp deletion (g.33184\_33214del31) in members of the family PK066 was directly performed by genomic DNA amplification. Only the proband (II-3) in this family carries the deletion. M represents 100 bp ladder-DNA markers.

5911 of PKD1 cDNA. The sequence in this region was selectively amplified by a new pair of primers (SI4.1F/SI4.1B) for sequencing analysis. A single nucleotide substitution (c.5693C>T) resulting in a nonsense mutation where a codon for glutamine (CAG) was changed to a stop codon (TAG) at the position 1828 (Q1828X) in exon 15 of PKD1 was observed (Figure 3B). The mutation with the nucleotide substitution was confirmed by sequencing analysis of the PKD1 gene (g.29591C>T). This mutation abolishes a restriction site of Pvu II endonuclease.

Mutation segregation study by Pvu II digestion in the PK031 family demonstrated that three affected members (I-1, II-1, and II-2) carried this mutation while one non-affected member (I-2) did not (Figure 3C and 3D).

**Frameshift mutations**

In family 039, the proband (I-2) had polycystic kidney disease at the age of 48 years and died of renal failure one year later. The patient's sister (I-1) and her daughter (II-1) were diagnosed as having the disease at 55 and 38 years, respectively. Two (I-1 and I-2) out of three affected persons in this family exhibited renal stone. The patient's sis-



**Figure 3**  
**Nonsense mutation (Q1828X) identified in family PK031. A. MRF-SSCP analysis in SI 4 fragment from the patient of family PK031.** The restriction maps of *Bgl* I + *Hha* I and *Ava* II digestions of SI 4 fragment (upper). The dotted square area indicates the region with mobility shifts in the MRF-SSCP analysis of SI 4 fragment from the patient. The SSCP patterns (lower) of SI 4 fragment digested with *Bgl* I + *Hha* I (left) and *Ava* II (right) show mobility shifts of single-stranded DNAs (pointed) in the patient's sample (P) compared with that of normal control (N). Double-stranded DNA fragment-size markers (ds) were included for each set. The mobility shifts were observed in the fragments with the sizes of 476 bp in the first set and 253 bp in the second one. The two fragments were located in the same region within the positions 5670–5911. **B. Direct sequencing analysis of PKD1-cDNA from the patient of family PK031.** The sequencing profile shows a nucleotide substitution (c.5693C>T), resulting in a nonsense mutation; CAG (glutamine) was changed to TAG (stop) at codon 1828 (Q1828X). **C. Restriction map of RFLP analysis for g.29591C>T (Q1828X) in PKD1-genomic DNA.** Four DNA fragments with the sizes of 117, 134, 91 and 30 bp are obtained from the normal allele, whereas only 3 fragments with the sizes of 251, 91 and 30 bp are generated from the mutant allele carrying the g.29591C>T mutation because of the loss of a *Pvu* II recognition site at the position 29593. **D. Results of direct detection for g.29591C>T (or Q1828X) mutation by *Pvu* II digestion in members of the family PK031.** The appearance of 251-bp fragment in I-1, II-1, and II-2 indicates the presence of Q1828X mutation. The mother (I-2) did not have the 251-bp fragment; thus, she did not carry the mutation. N is normal control sample digested with the same enzyme.



ter (I-1) also had severe hypertension causing serious headache but no intracranial aneurysm was detected by magnetic resonance angiography. The MRF-SSCP analysis of nested-PCR fragments amplified with SI4F/SI4B primers (SI 4) from *PKD1* cDNA of an affected person (I-1) in this family revealed mobility shifts of restriction fragments digested with either *Ava* II or *Bgl* I + *Hha* I (Figure 4A). A deletion of AG di-nucleotides (c.5225\_5226delAG) at codon 1672, resulting in a frameshift translation starting from this codon (Figure 4B) was finally identified. The di-nucleotide deletion was confirmed by sequencing of genomic DNA in exon 15 of *PKD1* (g.29124\_29125delAG). This mutation has been previously reported in many Caucasian families [15,24] and its correlation to cerebral aneurysm phenotype was questioned [24]. This mutation abolishes an *Eco*0109 I restriction site. Mutation segregation analysis by *Eco*0109 I digestion of amplified genomic DNA samples in the family PK039 showed that three affected members (I-1, I-2, and II-1) carried the mutation while a non-affected person (II-2) did not (Figure 4C).

The proband (II-1) of the family PK069 attended our renal clinics with the problem of end-stage chronic kidney disease at the age of 42 years. She was found to have polycystic kidney disease and since then she commenced on hemodialysis. Three of her siblings (II-2, II-3, and II-5) also had the disease but with normal renal function. Her father was still healthy at the age of 81 years. Her mother died of cervical cancer at the age of 38 years. PKD might be inherited from her mother. Mobility shifts were found in the MRF-SSCP analysis of SI 7 fragment from *PKD1* cDNA of the proband (II-1) (Figure 4D). The final sequence analysis in both cDNA and *PKD1*-specific DNA indicated a deletion of AT at codons 3080 and 3081 (c.9451\_9452delAT or g.39376\_39377delAT), resulting in a frameshift translation starting from codon 3082 (Figure 4E). This mutation abolishes an *Afl* III restriction site. Analysis of the mutation by *Afl* III digestion in the available members of family PK069 demonstrated that all four affected persons (II-1, II-2, II-3, and II-5) carried the mutation while two unaffected members (I-1 and II-4) did not (Figure 4F).

#### **In-frame deletion**

The proband (II-2) of family PK002 was diagnosed as having ADPKD at 24 years old. He developed ESRD at the age of 50 years old and has been commenced on hemodialysis at frequency of three times a week since then. He is now aged 56 years old. His father (I-1) experienced a long-standing hypertension and died at the age of 52 years. His elder sister (II-1) manifested polycystic kidney disease at the age of 37 years. She is now aged 60, being suffered from chronic renal failure (serum creatinine level 6 mg/dl). Further ultrasound work-up

revealed renal cysts in 3 out of 7 members in the subsequent generation. Obvious mobility shifts in the MRF-SSCP analysis were observed in SI-7 PCR product from *PKD1* cDNA of an affected member (II-1) of this family when compared with the normal counterparts (Figure 5A). Direct sequencing revealed an in-frame deletion of CTC from c.10070\_10072 (or g.41669\_41671), resulting in a single amino acid (leucine) deletion at the position 3287 (L3287del) (Figure 5B).

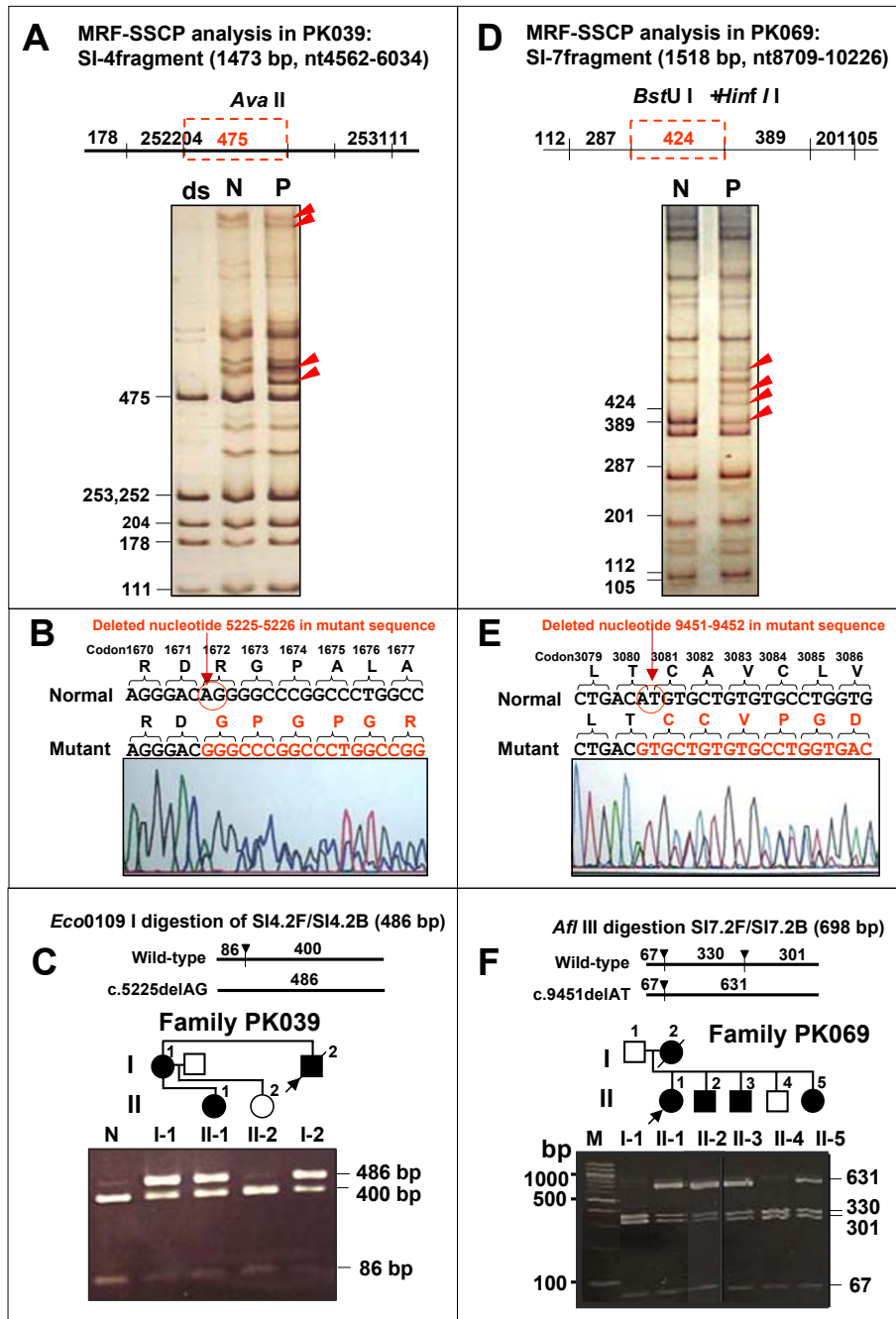
Sequence alignments of polycystin-1 among distant species from human through worm (*Caenorhabditis elegans*) reveal that L3287 is highly conserved (Figure 5C). In addition, screening in our control set of 112 normal chromosomes did not show the L3287del in *PKD1*. The L3287del mutation could directly be detected by the heteroduplex analysis of the amplified *PKD1*-specific fragment. The presence of L3287del mutation in five affected members (II-1, II-2, III-2, III-4, and III-6) but its absence in eight unaffected members of PK002 family were demonstrated (Figure 5D).

#### **Single nucleotide polymorphisms**

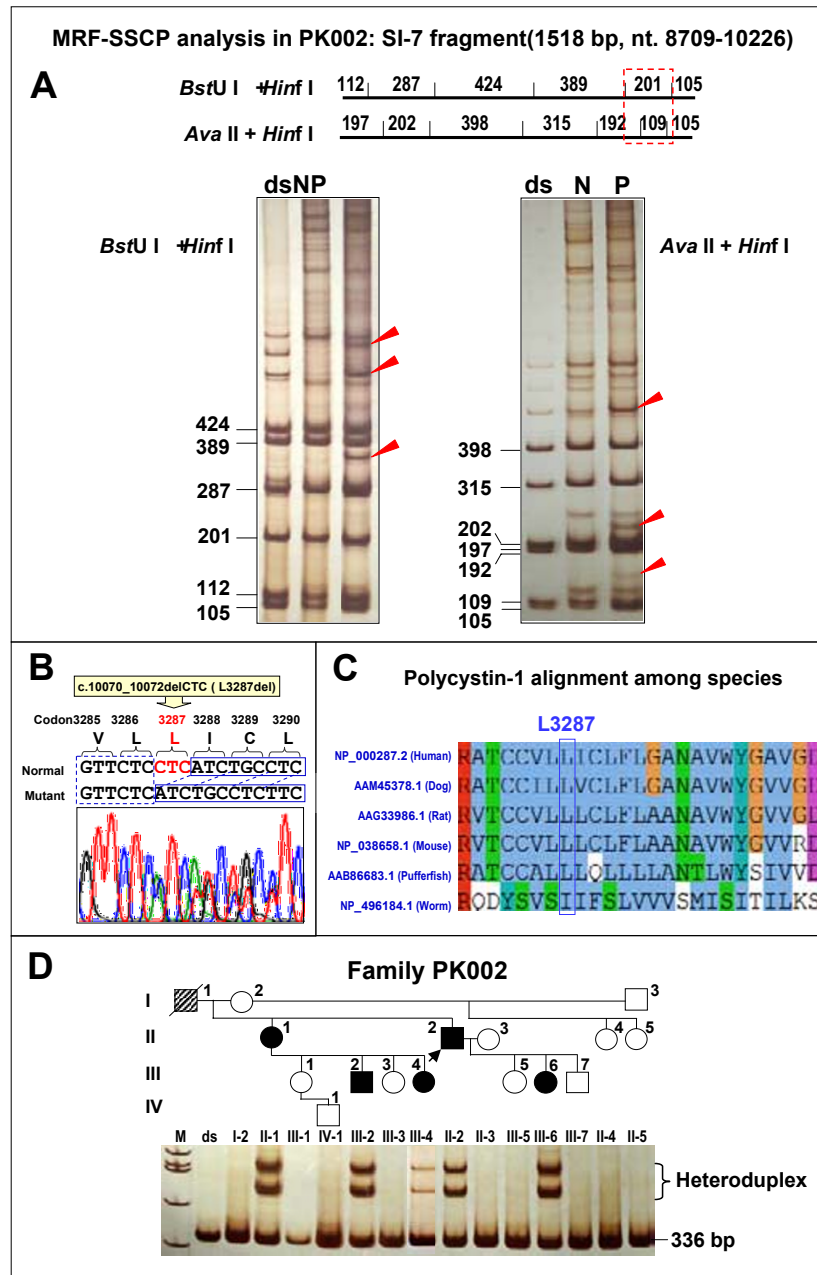
Using the MRF-SSCP analysis for screening the entire *PKD1*-cDNA sequence, we found a considerable number of mobility shifts of single-stranded DNA fragments. Many of these mobility shifts were not taken for further analysis because they were common in several patients as well as in normal control individuals. Thus, they were likely to be common single nucleotide polymorphisms (SNPs). In the cases that the mobility shifts were unique in the patients or in families possible to be mutations, they were then subjected to the detailed analysis. However, instead of being disease mutations, several SNPs in the *PKD1* gene were identified as presented in Table 4.

#### **Discussion**

We have developed a long RT-PCR method for amplification and isolation of the entire *PKD1*-coding sequence from its RNA transcripts prepared from peripheral blood lymphocytes, avoiding the interference from transcripts of *PKD1*-homologous genes [18]. This amplified full-length *PKD1* cDNA is a useful material for mutation analysis. Since the amplified product was originated from *PKD1* mRNA, abnormal transcripts resulted from mutations causing defective RNA splicing can directly be analyzed without the requirement for additional expression experiment. In addition, this amplified product can also be used for analysis of other *PKD1* mutations. An LR-PCR for genomic-DNA amplification of 18 kb covering exons 13–34 region of *PKD1* has also been developed for confirmatory mutation analysis in genomic DNA [19]. In our previous works, we have demonstrated the use of long RT-PCR and nested-PCR procedure and LR-PCR method for characterization of two *PKD1* mutations causing splicing



**Figure 4**  
**Frameshift deletions found in families PK039 (A-C) and PK069 (D-F).** **A, D.** MRF-SSCP analyses of SI-4 and SI-7 fragments from the patients of families PK039 and PK069, respectively. The maps of restriction fragments obtained from digestions of PCR fragments by sets of endonucleases in two families are shown (upper). The MRF-SSCP analyses (lower) of the patients (P) from both families show mobility shifts of single-stranded DNAs (pointed) when compared with those of normal controls (N). These fragments are located in the dotted box of the upper map. **B, E.** Sequencing analyses of PKD1-cDNA from the two patients. The sequencing profiles of both families show different types of two nucleotide deletions (c. 5225\_5226delAG and c.9451\_9452delAT), resulting in frameshift translation, as compared with the normal sequence. **C, F.** Direct detection of the two deletions (g.29124\_29125delAG and g.39376\_39377delAT) in members of the families PK039 and PK069, respectively. The di-nucleotide deletions in PKD1 genomic-DNA in members of both families were detected by restriction analyses. The two mutations abolish recognition sites of Eco0109 I and Afl III, respectively. The presence of larger fragment in each case indicates the existence of mutation.



**Figure 5**  
**Novel in-frame deletion (L3287del) identified in family PK002. A. MRF-SSCP analysis of SI 7 fragment of the patient.** The restriction map shows multiple fragment sizes obtained from digestions with two sets of restriction endonucleases (upper). The dotted square indicates the region with mobility shifts in the digested SI 7 fragment from the patient of family PK002. The SSCP patterns generated from digestions with two sets of enzymes (lower) and mobility shifts of single-stranded DNA (pointed) are shown. **B. Direct sequencing analysis of PKDI-cDNA from the patient.** The sequencing profile shows a deletion of three nucleotides (CTC; c.10070\_10072del), resulting in an in-frame mutation. The CTC deletion causes missing of leucine at position 3287 in polycystin-I (L3287del). **C. Multiple sequence alignment of polycystin-I from human, dog, rat, mouse, pufferfish and worm by using ClustalW program [33].** Amino acid residues around L3287 are shown. L3287 is highly conserved among distant species in which only in *C. elegans* that the residue is replaced by isoleucine, which is in the same group of amino acid. **D. Direct detection for L3287del in members of the family PK002 by SSCP analysis.** The L3287del could be detected by the presence of heteroduplex DNAs on the SSCP analysis. In the family PK002, five members carried the mutation while nine did not. M is standard DNA markers and ds is double-stranded DNA of a normal control.

**Table 4: PKD1 polymorphisms detected in Thai population**

Polymorphism	Location	Nucleotide change	Amino acid change	Frequency (%)	Detection method	Presence in HGs <sup>a</sup>
c.10078C>T	Exon 29	g.41677C>T	C3289C	16.4 (18/110)	BsmA I (+)	Yes
c.10120C>T	Exon 29	g.41719C>T	G3303G	4.5 (5/110)	Hph I (+)	Yes
c.10158G>A	Exon 30	g.41847G>A	S3316N	15.5 (17/110)	Bsp I 286 I (-)	Yes
c.10318C>T	Exon 31	g.43666C>T	S3369S	0.9 (1/114)	Pvu II (-)	No
IVS41+20C>T	IVS41	g.49833C>T	-	1.0 (4/400)	ASA <sup>b</sup>	No

<sup>a</sup>Analyzed from multiple alignment of *PKD1*-genomic DNA with 6 homologous genes or pseudogenes [17,34]. <sup>b</sup>Allele specific amplification.

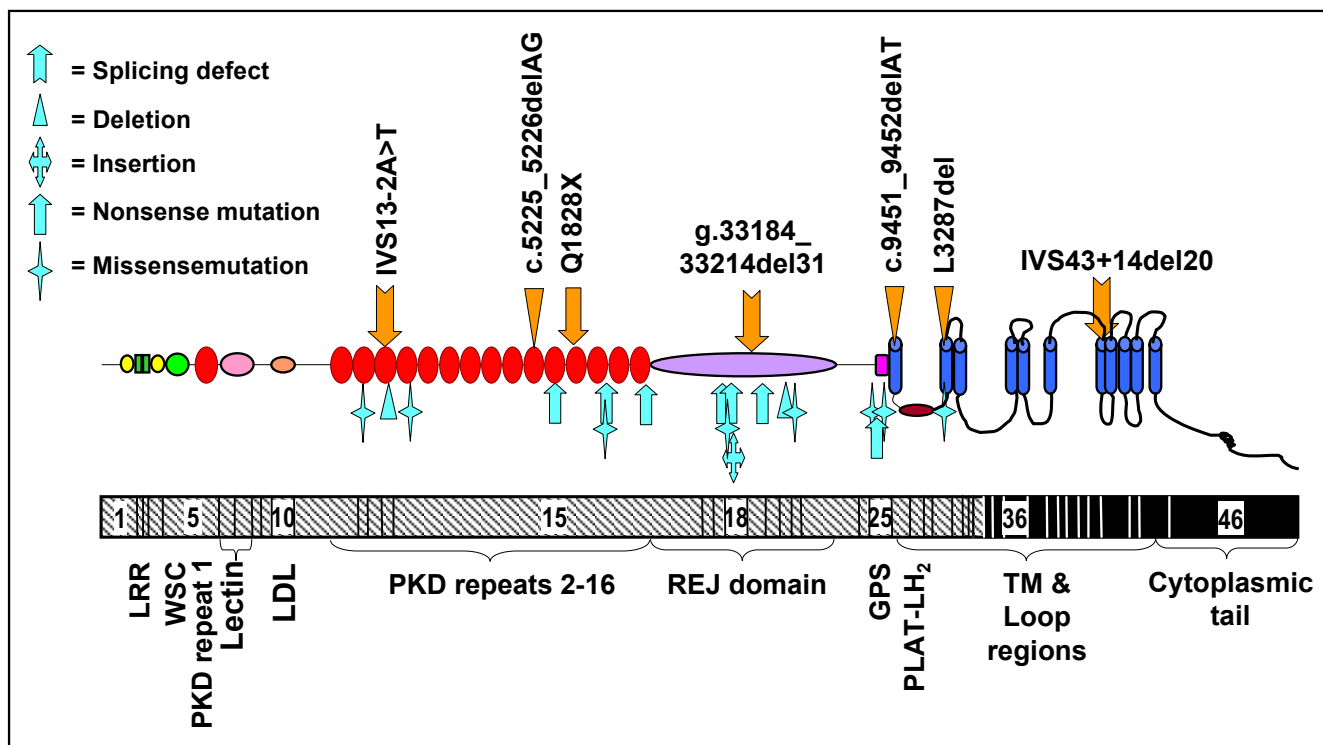
defects in two Thai families [19,20]. The advantage of simultaneous characterization of abnormal RNA splicing with the mutation has also been demonstrated in a recent work by Burtey et al. [25] who developed a method for *PKD1* mutation screening by RT-PCR and reported three splicing defects out of six mutations identified. Unlike our RT-PCR and nested-PCR method that require only 10 PCR reactions per one sample, the recently reported method [25] needs as many as 57 PCR reactions per one sample.

Another advantage of the method that we developed is that it uses reagents and equipments available in general molecular genetic laboratory. In addition, the mutation screening method can be modified to increase efficiency and to be suitable for each laboratory. However, several disadvantages are present in analysis of *PKD1* transcript including difficulty in sample handling and storage because of its unstable nature making it unpopular for routine service laboratory, complicated experimental procedure in cDNA synthesis, and presence of false-positive results due to contamination of atypical illegitimate products which sometimes puzzle interpretation of result and make it necessary to analyze of *PKD1*-genomic DNA for confirmation of mutation.

In this study, we have further applied the developed long RT-PCR followed by nested PCR and long-range genomic-DNA amplification for analysis of mutation in the reiterated region of *PKD1* in Thai families with ADPKD. The MRF-SSCP technique has been developed and preliminarily used for screening other types of mutations. This method is able to screen mutation in a long cDNA fragment (>1 kb) amplified by nested PCR and it is feasible to use for mutation screening in the entire sequence of *PKD1* cDNA, reducing the numbers of PCR reactions and SSCP gels required for the analysis. In the application of long RT-PCR and mutation screening by MRF-SSCP in our study, we could detect *PKD1* mutations in 5 out of 10 families (50%). The limitation of detection rate may be due to low sensitivity of SSCP for mutation screening in long cDNA fragments (>300 bp) usually present after the digestion of PCR products with restriction enzymes and also probably due to the use of only single SSCP condition. However, this detection rate is comparable to that of

protein-truncation test (PTT) which is about 52% [26,27] although it is lower than that of DGGE [28-30] and DHPLC [15] which are about 60% and 70%, respectively. In the MRF-SSCP analysis, false-positive mobility shifts of the digested-cDNA fragments were found to be about 10%, which could be mainly eliminated by repeating the screening experiment or performing the analysis in more than one affected members in the same family. Although PTT method can screen for a relatively large cDNA fragments (~2 kb) and the detected alterations are almost all pathogenic mutations, its major disadvantage is that missense mutations, which are a significant source of *PKD1* mutation [27] or small in-frame changes are not detected. Thus, it may not be an ideal screening method for detection of all types of *PKD1* mutations. DGGE and DHPLC are the methods of choice provided that the equipments are available and the detection conditions are well optimized. Direct sequencing of the entire *PKD1* gene is however very expensive if mutation screening is not initially performed and it may not be appropriate for such a large gene as *PKD1*.

Using the previously reported and this newly developed method, we have identified three novel (splicing, frameshift and in-frame) mutations and two known (nonsense and frameshift) alterations in five Thai families with ADPKD (Table 3 and Figure 6). Two of these (splicing and nonsense) changes are possibly *de novo* mutations. All these mutations located in the reiterated region which were confirmed by analyses of *PKD1*-genomic DNA using LR-PCR method and direct sequencing. A novel splicing defect that was identified in family PK066 is g.33184\_33214del31 which resulted in exon 19 skipping, most likely because of the deletion of splice-donor site of intron 19. Missing of exon 19 sequence in *PKD1* mRNA will cause a frameshift in polycystin-1 translation. The predicted protein would have a novel 50 amino-acid sequence after the residue 2497 and would terminate at the position 2548. Thus, the mutant protein would lack almost half of polycystin-1 in its C-terminus starting from the REJ module. The second novel mutation is a frameshift deletion (c.9451\_9452delAT) identified in family PK069, resulting in a frameshift translation after codon 3081. Novel 95 amino acids would be observed in



**Figure 6**  
**Distribution of PKD1 mutations identified in Thai patients with ADPKD.** Diagrams of polycystin-1 (upper) and PKD1 gene (lower) show domain structures and coding regions for the protein domains, respectively. Seven PKD1 mutations (above polycystin-1) were identified by our groups, while the other eighteen (under polycystin-1) were also reported in Thai patients by Phakdeekitcharoen et al. [31,32]. Majority of the mutations locate in the regions encoding PKD repeats, REJ and the beginning TM domains.

this mutant protein before premature termination at the position 3177, truncating all the C-terminus of polycystin-1 beginning from TM 1. The third novel mutation identified in family PK002 is an in-frame deletion (L3287del) affecting a highly conserved residue in TM2 domain of polycystin-1. The proband in the family had ESRD and the youngest affected member (III-6) was diagnosed at 7 years old (Figure 5). The frameshift mutation due to di-nucleotide deletion in exon 15 (c.5225\_5226delAG) found in family PK039 has been previously reported in several unrelated Caucasian families [15,24]. The di-nucleotide deletion causes frameshift translation beginning at codon 1672, introducing novel 97 amino acids and premature termination at codon 1768. This mutation might associate with cerebral aneurysm [24] but this association was not seen in this reported Thai family. Instead, it is suspected to correlate to ESRD as observed in the proband. A nonsense (Q1828X) mutation in exon 15 identified in family PK031 has recently been reported in a European family (P 293) in which another nonsense mutation (S2164X) was concur-

rently identified on the same chromosome [15]. This nonsense (Q1828X) mutation in the Thai family should occur independently as a *de novo* event in the patient and inherited to his son and daughter, since this mutation and ADPKD were not observed in other 55 members of his kindred.

PKD1 mutations reported so far in Thai families appear to be heterogeneous, similar to other ethnic origins worldwide. However, some degree of clustering of mutations in the regions encoding the PKD repeats and REJ domain of polycystin-1 is noticed (Figure 6) [19,20,31,32]. The mutations that we identified in this and previous studies [19,20] consisted of splicing, frameshift, in-frame and nonsense alterations. We have not yet observed missense mutations which have already been reported in Thai patients with ADPKD by Phakdeekitcharoen et al. [31,32]. It is possible that our method has a low sensitivity for detecting missense mutation. However, as several single nucleotide polymorphisms (SNPs) could be identified (Table 4), we believe that our method is capable to also

identify this type of mutation. It is likely that no detectable missense mutation in our study may occur by chance. No relationship between specific mutation and clinical manifestations was found from our data, similar to that observed in many other reports. With our long RT-PCR and nested PCR and the mutation screening by MRF-SSCP method or other modifications to increase screening efficiency such as the use of DHPLC [15], we expect to identify majority of *PKD1* mutations, if not all, in our patients for the benefits of better understanding of pathogenesis of ADPKD, development of rapid molecular genetic diagnosis, and improvement of preventive measure for the complications related to the disease.

### Conclusions

This study is the first report using the long RT-PCR method in combination with MRF-SSCP for mutation screening of *PKD1* cDNA and total five mutations were identified within the reiterated region. Three mutations (splicing defect, frameshift alteration and in-frame deletion) are novel. Two mutations (splicing defect and nonsense change) are possibly *de novo*. *PKD1* mutations reported so far in Thai patients with ADPKD are heterogeneous but mutations in a majority group of patients are still unknown, requiring further characterization.

### Competing interests

None declared

### Authors' contributions

WT set up and carried out the molecular genetic studies, co-ordinated experimental work, and drafted the manuscript. CL as a clinical geneticist was responsible for clinical examinations, providing genetic counselling and consultation to the ADPKD patients and families, collecting clinical and family data. KV as a nephrologist was responsible for clinical and nephrological investigations, collections of clinical data and blood samples. CS as the first clinical geneticist initiated the medical care and clinical genetic studies, diagnosed and recruited the ADPKD families. DB took part in *PKD1* mutation analysis. NR performed the linkage analysis. PY co-ordinated research activity, designed experimental studies, participated in discussion and interpretation of results, and corrected the manuscript. All authors have already read and approved the final version of the manuscript.

### Acknowledgements

We thank all ADPKD patients, family members, and laboratory personnel who participated and donated blood samples for the study. We also thank staff members of the Renal Unit, Department of Medicine, Faculty of Medicine Siriraj Hospital, for helping in the blood sample collection. This work was supported by the Thailand Research Fund (TRF) Post-Doctoral Research Grant (to WT), Mahidol University and National Research Coun-

cil of Thailand (NRCT) (to CL), and the National Center for Genetic Engineering and Biotechnology (BIOTEC), Thailand (to PY).

### References

1. Dalgaard OZ: **Bilateral polycystic disease of the kidneys: a follow-up of two hundred and eighty four patients and their families.** *Acta Med Scand* 1957, **328**:1-255.
2. Gabow PA: **Autosomal dominant polycystic kidney disease.** *N Engl J Med* 1993, **329**:332-342.
3. The European Polycystic Kidney Disease Consortium: **The polycystic kidney disease 1 gene encodes a 14 kb transcript and lies within a duplicated region on chromosome 16.** *Cell* 1994, **77**:881-894.
4. Hughes J, Ward CJ, Peral B, Aspinwall R, Clark K, San Millan JL, Gamble V, Harris PC: **The polycystic kidney disease 1 (*PKD1*) gene encodes a novel protein with multiple cell recognition domains.** *Nat Genet* 1995, **10**:151-160.
5. Burn TC, Connors TD, Dackowski WR, Petry LR, Van Raay TJ, Millholland JM, Venet M, Miller G, Hakim RM, Landes GM et al.: **Analysis of the genomic sequence for the autosomal dominant polycystic kidney disease (*PKD1*) gene predicts the presence of a leucine-rich repeat. The American PKD1 Consortium (APKD Consortium).** *Hum Mol Genet* 1995, **4**:575-582.
6. The International Polycystic Kidney Disease Consortium: **Polycystic kidney disease: the complete structure of the *PKD1* gene and its protein.** *Cell* 1995, **81**:289-298.
7. Mochizuki T, Wu G, Hayashi T, Xenophontos SL, Veldhuisen B, Saris JJ, Reynolds DM, Cai Y, Gabow PA, Pierides A, Kimberling WJ, Breuning MH, Deltas CC, Peters DJ, Somlo S: ***PKD2*, a gene for polycystic kidney disease that encodes an integral membrane protein.** *Science* 1996, **272**:1339-1342.
8. Daoust MC, Reynolds DM, Bichet DG, Somlo S: **Evidence for a third genetic locus for autosomal dominant polycystic kidney disease.** *Genomics* 1995, **25**:733-736.
9. Paterson AD, Pei Y: ***PKD3*-to be or not to be?** *Nephrol Dial Transplant* 1999, **14**:2965-2966.
10. Nauli SM, Alenghat FJ, Luo Y, Williams E, Vassilev P, Li X, Elia AE, Lu W, Brown EM, Quinn SJ, Ingber DE, Zhou J: **Polycystins 1 and 2 mediate mechanosensation in the primary cilium of kidney cells.** *Nat Genet* 2003, **33**:129-137.
11. Pei Y, Paterson AD, Wang KR, He N, Hefferton D, Watnick T, Germino GG, Parfrey P, Somlo S, St George-Hyslop P: **Bilineal disease and trans-heterozygotes in autosomal dominant polycystic kidney disease.** *Am J Hum Genet* 2001, **68**:355-363.
12. Krawczak MCD: **The Human Gene Mutation Database. The Institute of Medical Genetics in Cardiff, The University of Wales College of Medicine, Trends Genet** 1997, **13**:121-122.
13. Ding L, Zhang S, Qiu W, Xiao C, Wu S, Zhang G, Cheng L: **Novel mutations of *PKD1* gene in Chinese patients with autosomal dominant polycystic kidney disease.** *Nephrol Dial Transplant* 2002, **17**:75-80.
14. Eo HS, Lee JG, Ahn C, Cho JT, Hwang DY, Hwang YH, Lee EJ, Kim YS, Han JS, Kim S, Lee JS, Jeoung DI, Lee SE, Kim UK: **Three novel mutations of the *PKD1* gene in Korean patients with autosomal dominant polycystic kidney disease.** *Clin Genet* 2002, **62**:169-174.
15. Rossetti S, Chauveau D, Walker D, Saggari-Malik A, Winearls CG, Torres VE, Harris PC: **A complete mutation screen of the ADPKD genes by DHPLC.** *Kidney Int* 2002, **61**:1588-1599.
16. Rossetti S, Burton S, Strmecki L, Pond GR, San Millan JL, Zerres K, Barratt TM, Ozen S, Torres VE, Bergstralh EJ, Winearls CG, Harris PC: **The position of the polycystic kidney disease 1 (*PKD1*) gene mutation correlates with the severity of renal disease.** *J Am Soc Nephrol* 2002, **13**:1230-1237.
17. Bogdanova N, Markoff A, Gerke V, McCluskey M, Horst J, Dworniczak B: **Homologues to the first gene for autosomal dominant polycystic kidney disease are pseudogenes.** *Genomics* 2001, **74**:333-341.
18. Thongnopphakun W, Wilairat P, Vareesangthip K, Yenchitsomanus PT: **Long RT-PCR Amplification of the entire coding sequence of the polycystic kidney disease 1 (*PKD1*) gene.** *Bio-techniques* 1999, **26**:126-132.
19. Thongnopphakun W, Rungroj N, Wilairat P, Vareesangthip K, Siri-navin C, Yenchitsomanus PT: **A novel splice-acceptor site mutation (*IVS13-2A>T*) of polycystic kidney disease 1 (*PKD1*)**



- gene resulting in an RNA processing defect with a 74-nucleotide deletion in exon 14 of the mRNA transcript. *Hum Mutat* 2000, **15**:115.
20. Rungroj N, Thongnoppakhun W, Vareesangthip K, Sirinavin C, Wilairat P, Yenchitsomanus PT: **Molecular defect of PKD1 gene resulting in abnormal RNA processing in a Thai family.** *J Med Assoc Thai* 2001, **84**:1308-1316.
  21. Lee HH, Lo WJ, Choo KB: **Mutational analysis by a combined application of the multiple restriction fragment-single strand conformation polymorphism and the direct linear amplification DNA sequencing protocols.** *Anal Biochem* 1992, **205**:289-293.
  22. Ravine D, Gibson RN, Walker RG, Sheffield LJ, Kincaid-Smith P, Danks DM: **Evaluation of ultrasonographic diagnostic criteria for autosomal dominant polycystic kidney disease I.** *Lancet* 1994, **343**:824-827.
  23. Beidler JL, Hilliard PR, Rill RL: **Ultrasensitive staining of nucleic acids with silver.** *Anal Biochem* 1982, **126**:374-380.
  24. Watnick T, Phakdeekitcharoen B, Johnson A, Gandolph M, Wang M, Briefel G, Klinger KW, Kimberling W, Gabow P, Germino GG: **Mutation detection of PKD1 identifies a novel mutation common to three families with aneurysms and/or very-early-onset disease.** *Am J Hum Genet* 1999, **65**:1561-1571.
  25. Burtsey S, Lossi AM, Bayle J, Berland Y, Fontes M: **Mutation screening of the PKD1 transcript by RT-PCR.** *J Med Genet* 2002, **39**:422-429.
  26. Peral B, Gamble V, Strong C, Ong AC, Sloane-Stanley J, Zerres K, Winearls CG, Harris PC: **Identification of mutations in the duplicated region of the polycystic kidney disease I gene (PKD1) by a novel approach.** *Am J Hum Genet* 1997, **60**:1399-1410.
  27. Rossetti S, Strmecki L, Gamble V, Burton S, Sneddon V, Peral B, Roy S, Bakkaloglu A, Komel R, Winearls CG, Harris PC: **Mutation analysis of the entire PKD1 gene: genetic and diagnostic implications.** *Am J Hum Genet* 2001, **68**:46-63.
  28. Perrichot RA, Mercier B, Simon PM, Whebe B, Cledes J, Ferec C: **DGGE screening of PKD1 gene reveals novel mutations in a large cohort of 146 unrelated patients.** *Hum Genet* 1999, **105**:231-239.
  29. Perrichot R, Mercier B, Quere I, Carre A, Simon P, Whebe B, Cledes J, Ferec C: **Novel mutations in the duplicated region of PKD1 gene.** *Eur J Hum Genet* 2000, **8**:353-359.
  30. Peters DJ, Ariyurek Y, van Dijk M, Breuning MH: **Mutation detection for exons 2 to 10 of the polycystic kidney disease I (PKD1)-gene by DGGE.** *Eur J Hum Genet* 2001, **9**:957-960.
  31. Phakdeekitcharoen B, Watnick TJ, Ahn C, Whang DY, Burkhart B, Germino GG: **Thirteen novel mutations of the replicated region of PKD1 in an Asian population.** *Kidney Int* 2000, **58**:1400-1412.
  32. Phakdeekitcharoen B, Watnick TJ, Germino GG: **Mutation analysis of the entire replicated portion of PKD1 using genomic DNA samples.** *J Am Soc Nephrol* 2001, **12**:955-963.
  33. Thompson JD, Higgins DG, Gibson TJ: **CLUSTAL W: improving the sensitivity of progressive multiple sequence alignment through sequence weighting, position-specific gap penalties and weight matrix choice.** *Nucleic Acids Res* 1994, **22**:4673-4680.
  34. Loftus BJ, Kim UJ, Sneddon VP, Kalush F, Brandon R, Fuhrmann J, Mason T, Crosby ML, Barnstead M, Cronin L, Deslattes Mays A, Cao Y, Xu RX, Kang HL, Mitchell S, Eichler EE, Harris PC, Venter JC, Adams MD: **Genome duplications and other features in 12 Mb of DNA sequence from human chromosome 16p and 16q.** *Genomics* 1999, **60**:295-308.

### Pre-publication history

The pre-publication history for this paper can be accessed here:

<http://www.biomedcentral.com/1471-2350/5/2/prepub>

Publish with **BioMed Central** and every scientist can read your work free of charge

"BioMed Central will be the most significant development for disseminating the results of biomedical research in our lifetime."

Sir Paul Nurse, Cancer Research UK

Your research papers will be:

- available free of charge to the entire biomedical community
- peer reviewed and published immediately upon acceptance
- cited in PubMed and archived on PubMed Central
- yours — you keep the copyright

Submit your manuscript here:  
[http://www.biomedcentral.com/info/publishing\\_adv.asp](http://www.biomedcentral.com/info/publishing_adv.asp)

