

Database

Open Access

A suite of web applications to streamline the interdisciplinary collaboration in secondary data analyses

Ricardo Pietrobon*¹, Ulrich Guller², Henrique Martins³, Andreia P Menezes⁴, Laurence D Higgins⁵ and Danny O Jacobs⁶

Address: ¹Center for Excellence in Surgical Outcomes, Duke University Medical Center, Duke University, Durham, NC, USA, ²Center for Excellence in Surgical Outcomes, University Hospital Basel, Department of General Surgery and Surgical Research, Basel, Switzerland, ³Duke University Health System, Rio Claro/Sao Paulo, Brazil, ⁴Reliable International Research, Center for Excellence in Surgical Outcomes, Campina Grande do Sul/ Parana – Brazil, ⁵Department of Surgery, Duke University Medical Center, Durham, NC, USA and ⁶Department of Internal Medicine, University of North Carolina at Chapel Hill, NC, USA

Email: Ricardo Pietrobon* - rpietro@duke.edu; Ulrich Guller - uguller@yahoo.com; Henrique Martins - henrique@duke.edu; Andreia P Menezes - amenezes@duke.edu; Laurence D Higgins - l.higgins@duke.edu; Danny O Jacobs - Danny.Jacobs@duke.edu

* Corresponding author

Published: 14 December 2004

Received: 10 May 2004

BMC Medical Research Methodology 2004, **4**:29 doi:10.1186/1471-2288-4-29

Accepted: 14 December 2004

This article is available from: <http://www.biomedcentral.com/1471-2288/4/29>

© 2004 Pietrobon et al; licensee BioMed Central Ltd.

This is an Open Access article distributed under the terms of the Creative Commons Attribution License (<http://creativecommons.org/licenses/by/2.0>), which permits unrestricted use, distribution, and reproduction in any medium, provided the original work is properly cited.

Abstract

Background: We describe a system of web applications designed to streamline the interdisciplinary collaboration in outcomes research.

Description: The outcomes research process can be described as a set of three interrelated phases: design and selection of data sources, analysis, and output. Each of these phases has inherent challenges that can be addressed by a group of five web applications developed by our group. QuestForm allows for the formulation of relevant and well-structured outcomes research questions; Research Manager facilitates the project management and electronic file exchange among researchers; Analysis Charts facilitate the communication of complex statistical techniques to clinicians with varying previous levels of statistical knowledge; Literature Matrices improve the efficiency of literature reviews. An outcomes research question is used to illustrate the use of the system.

Conclusions: The system presents an alternative to streamline the interdisciplinary collaboration of clinicians, statisticians, programmers, and graduate students.

Background

In the last decade, the number of relevant data sources available for outcomes research has grown exponentially. In contrast, the number of individual researchers with clinical and statistical expertise required to explore these data sets increase at a much slower pace. As a result, an immense quantity of valuable clinical data are left

untouched, never becoming clinical publications that could potentially improve health care.

The disproportion between data volume and number of qualified researchers can be explained by the growing complexity involved in outcomes research projects using secondary data analyses. Researchers have to formulate of

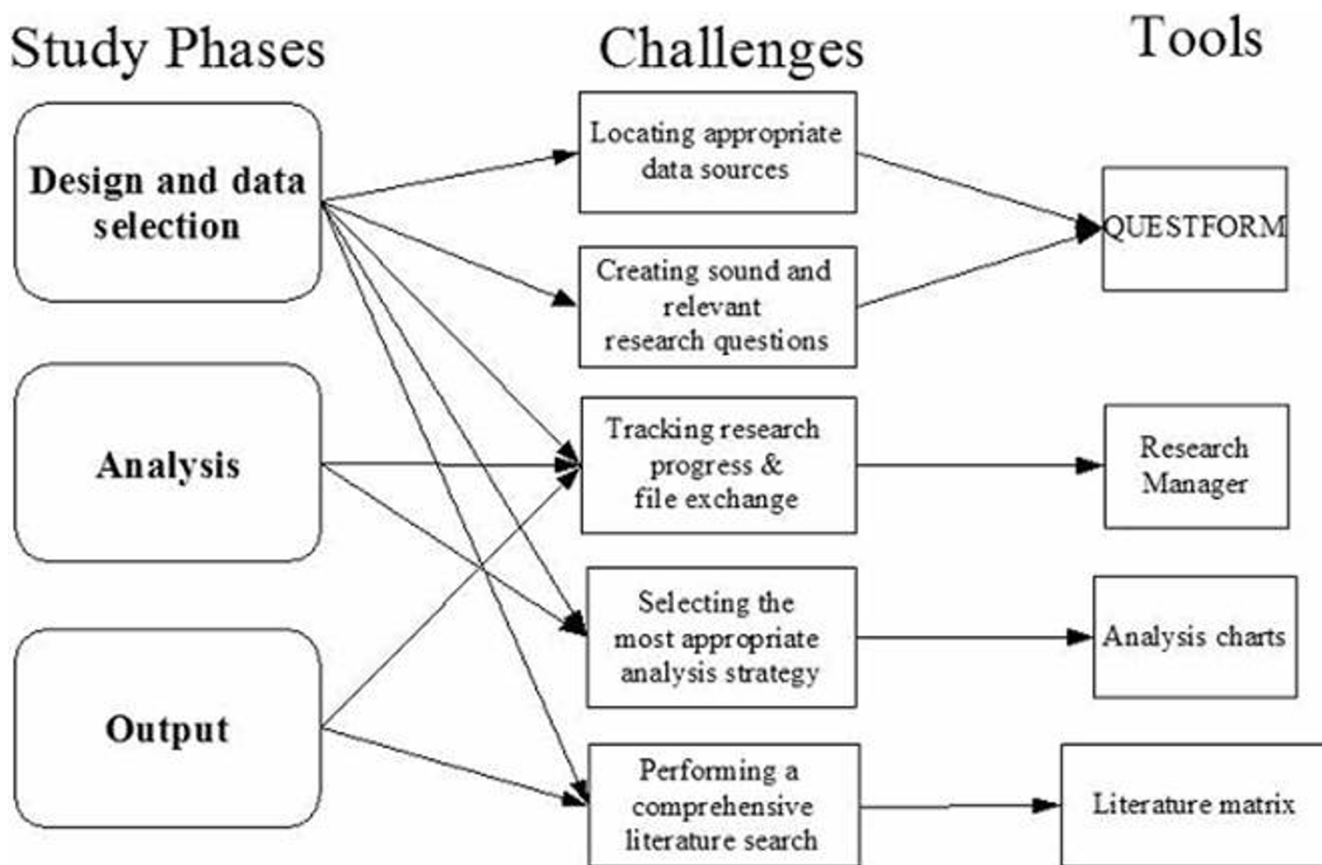


Figure 1
Research phases, challenges, and respective tools

a clinically relevant and methodologically sound research question, find appropriate data sources, perform statistical analyses, and generate a final manuscript that will be submitted for peer-review. Frequently, individual researchers have the training and time to perform a few of these steps, but the integration of all tasks calls for an interdisciplinary systems approach [1,2]. This interdisciplinary effort, however, is often challenged by communication problems among researchers with different backgrounds, particularly when physicians with an exclusive clinical education attempt to work in collaboration with quantitative researchers such as statisticians [3]. As a consequence, the output of such collaboration is either scarce or absent.

This article describes a suite of web applications developed to facilitate the process of converting outcome databases into clinical manuscripts, to streamline the interdisciplinary collaboration of researchers, and to connect all different steps of the outcomes research process. To illustrate its use, we will describe how a research

project has been conducted using this system from its early phase of research question formulation to the completion of the final manuscript.

Construction and content

The system of Web applications is composed by five different tools: QuestForm, Research Manager, Analysis Charts, and Literature Matrices. These tools were designed to assist researchers in each of the phases encountered in an outcomes research project involving secondary data analysis (Figure 1). All tools are freely available at a designated web site <http://www.ceso.duke.edu>. The following sections will describe each of the Web applications and their application in the answer of a real outcomes research question.

QuestForm

General description

QuestForm, an acronym for "Question Formulation", is an application designed to assist researchers in the location of clinical databases and formulation of outcome

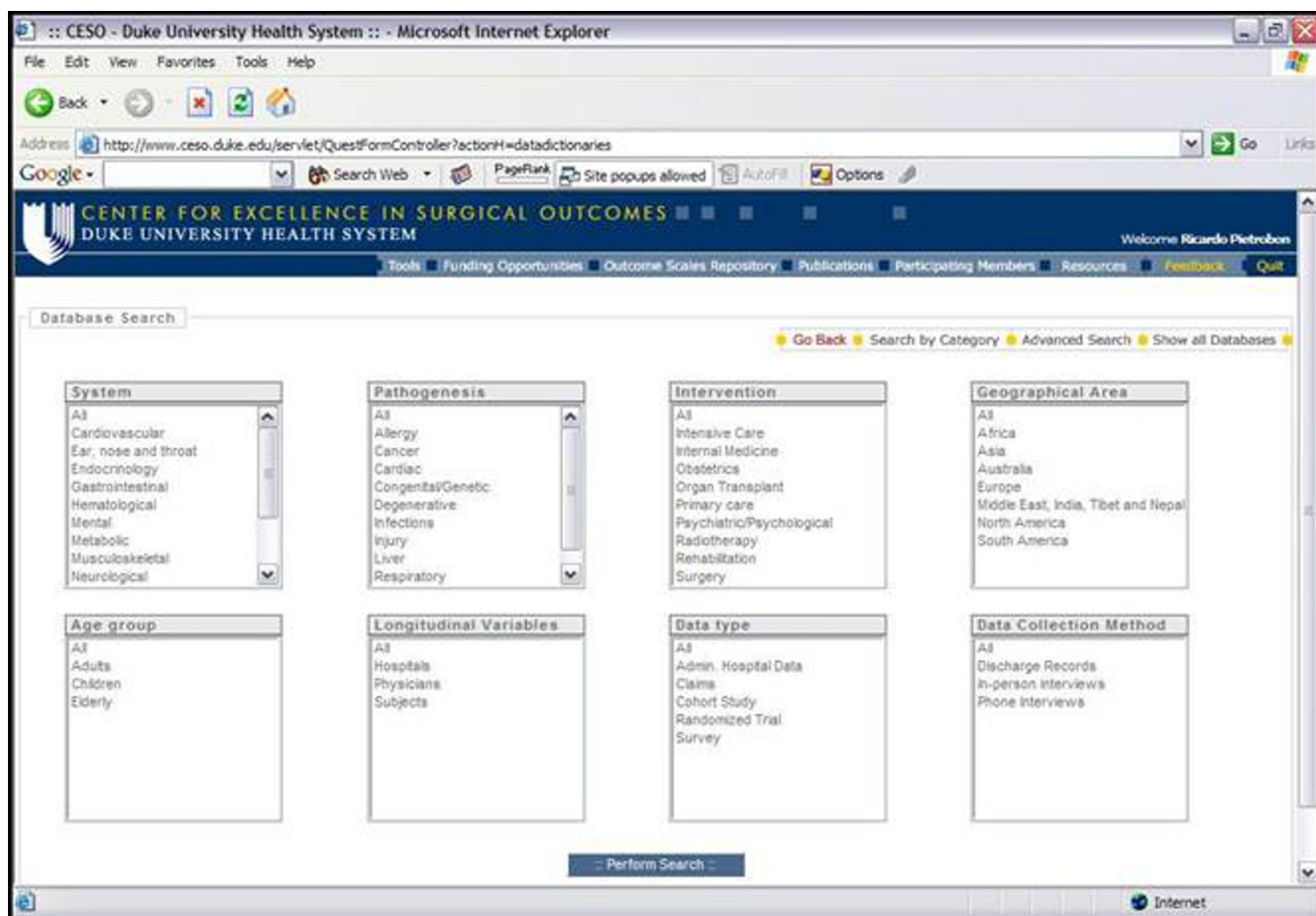


Figure 2
QuestForm application – Database search engine

research questions (Figure 2). Clinical databases contain raw data (observations from individual patients) from national administrative claim data, cohort studies, clinical trials, and registries (see <http://www.ceso.duke.edu> for an updated list). All databases have been de-identified and do not contain protected health information as specified by the Health Insurance Portability and Accountability Act (<http://www.hhs.gov/ocr/hipaa/>, accessed on Aug/04/2004). The application is built using Extensible HyperText Markup Language 1.0 (XHTML) [4], Java, and a relational database (MySQL 4.0)[5].

QuestForm starts by presenting researchers with three main strategies to find research databases: use of pre-determined key words that describe the database as a unit (Figure 2), user-defined key words to describe variables present in the data dictionary of each database, and the presentation of a complete list of all databases. Once databases are located, researchers can read an overall summary

about the database including details about number of subjects, sampling strategy, data ownership, and overall characteristics of the study population and associated procedures (Figure 3). Researchers then determine that the database most appropriate to answer the research question at hand, a JAVA screen is displayed for research question formulation (Figure 4). This screen presents all variables displayed in hierarchical categories. Variables are presented with the corresponding question and alternative responses. All variables can be inserted into a research question (Question Diagram) divided into the classical categories for an epidemiological question: Outcomes, Predictors, Confounders, Inclusion and Exclusion Criteria. Search engines are provided for ICD9-CM diagnosis and procedure codes (Figure 5), which can also be inserted into the Question Diagram. Finally, previously formulated Question Diagrams can be shared among researchers. This latter functionality allows researchers to both share Question Diagrams among members of the

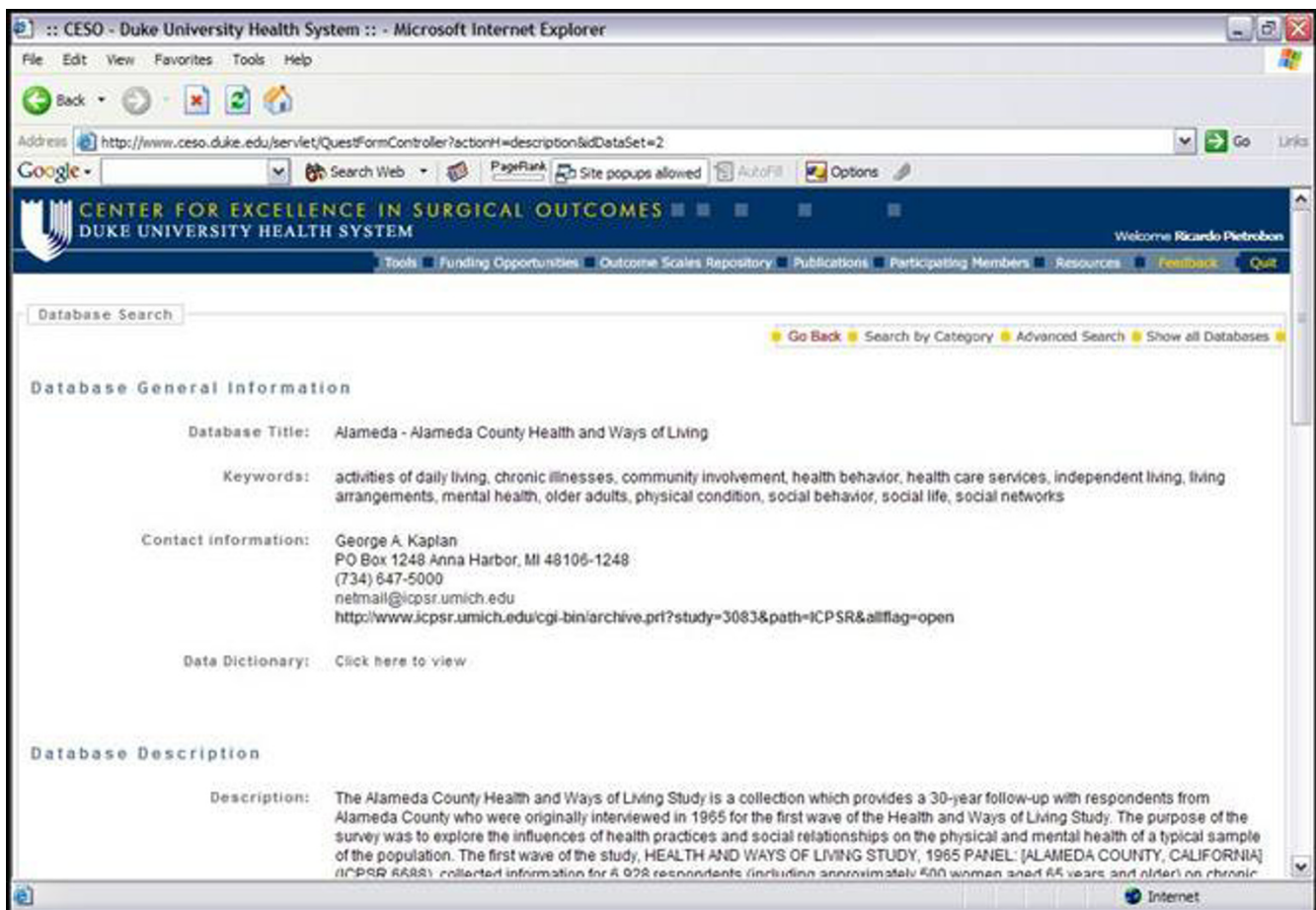


Figure 3
QuestForm application – Overall description of the database

ongoing project as well as share previously formulated Question Diagrams with researchers from other teams. Once the question is fully formulated, researchers can save the question as in a graphical format known as Question Diagram.

Outcomes research application

Dr. Guller initiated the project searching for an existing database that would allow him to compare surgical outcomes between laparoscopic and open appendectomy procedures in the treatment of acute appendicitis. The outcomes were pre-specified as mortality and infection, although other existing outcomes would also be of interest. Although there are multiple single-institution studies attempting to answer this question [6,7], few studies have taken a population approach to test whether one procedure is superior to the other.

As a first step, Dr. Guller searched across previously formulated Question Diagrams to evaluate whether other studies could have used a similar research design. Since none was found in QuestForm, Dr. Guller searched across more than forty different databases for an existing database that would have the variables to answer his research question. After navigating through multiple data dictionaries, Dr. Guller found that the Nationwide Inpatient Sample (NIS) Release 6, 1997 [8] presented the variables and an adequate number of patients to answer his question.

Once the database was located, Dr. Guller selected the outcomes of interest (length of hospital stay, in-hospital complications, in-hospital mortality, rate of routine discharge), main predictors (laparoscopic versus open procedures), and confounders (age, gender, race, household income, comorbidity, hospital volume, location of the hospital, teaching status of hospital, and appendix

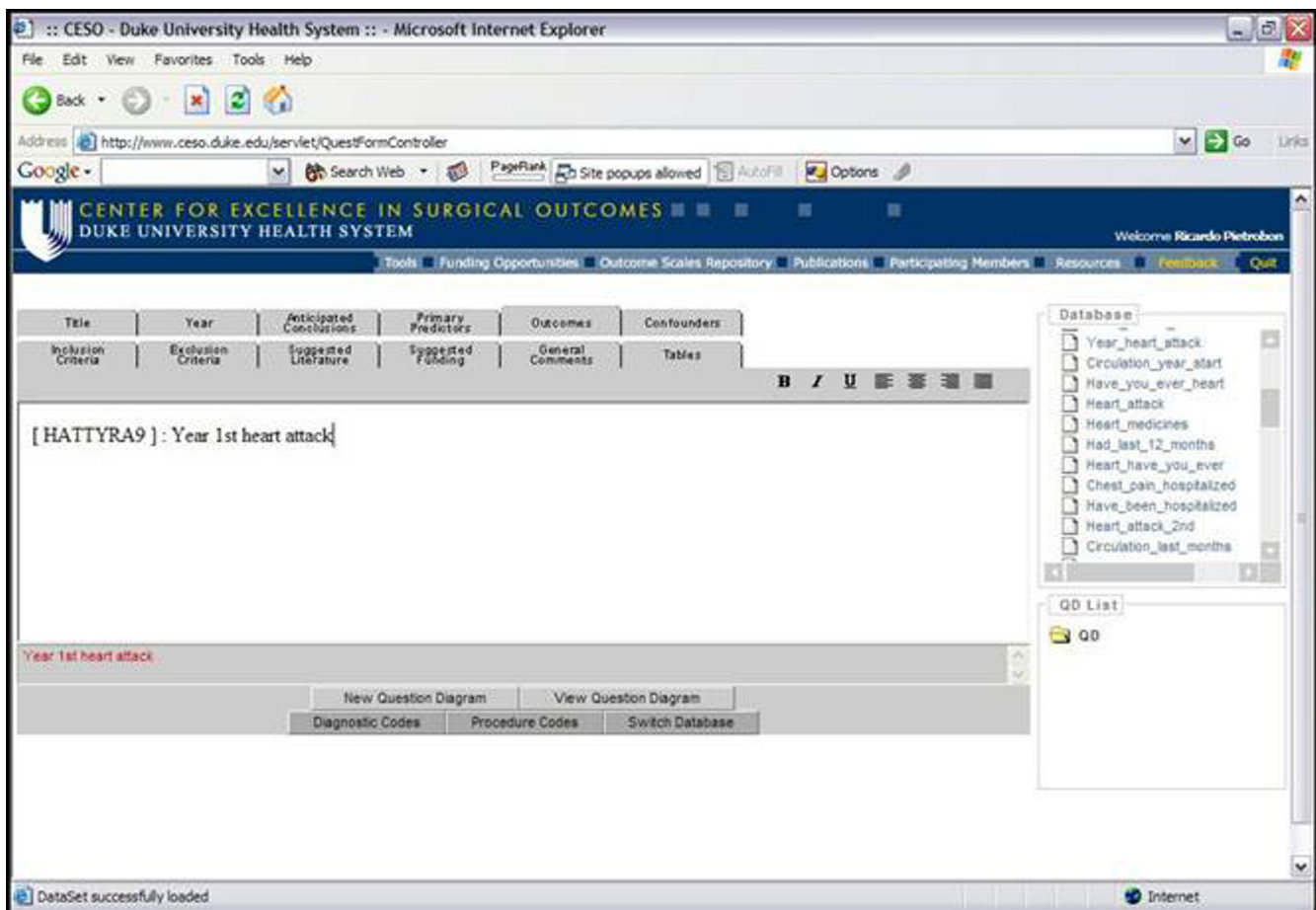


Figure 4
QuestForm application – Formulation of a Question Diagram

perforation), inserting each of them into the research question fields in QuestForm. Using built-in search engines for ICD9 codes, Dr. Guller created the definition for each of the above-mentioned variables and defined the inclusion and exclusion criteria. The final research question was then saved as a Question Diagram and immediately submitted to Dr. Pietrobon for feasibility evaluation. Dr. Pietrobon judged that the project was feasible and could be completed using the database indicated by Dr. Guller. At this point, the project was initiated and a detailed project management plan was established using Research Manager.

Research manager

Research Manager is a Web application developed by our group designed to facilitate the project management of clinical research projects. Similar to QuestForm, Research Manager is licensed under the GNU Public License [10], which allows individuals to copy, modify, and freely distribute the software as long as the source code is provided.

Research Manager provides multiple features to facilitate project management of clinical research projects. All projects are displayed by category (e.g., cardiology, general surgery, etc) with a brief description. The internal content of all projects is password protected. All internal tasks within a project are assigned to individual researchers. Project administrators initially assign deadlines that can be modified by task leaders within three days. All participating members of the project receive weekly reports containing details about the activity and the latest electronic file within each task (Figure 6). These files can include research questions, data analysis files, synthesis of a literature review, and manuscript drafts. Project members can also customize the application to receive updates for every single file uploaded to Research Manager in real time if they decide to closely track the project. Expired tasks are marked in the weekly report sent to the entire team, thus providing an incentive for investigators to keep tasks within planned deadlines.

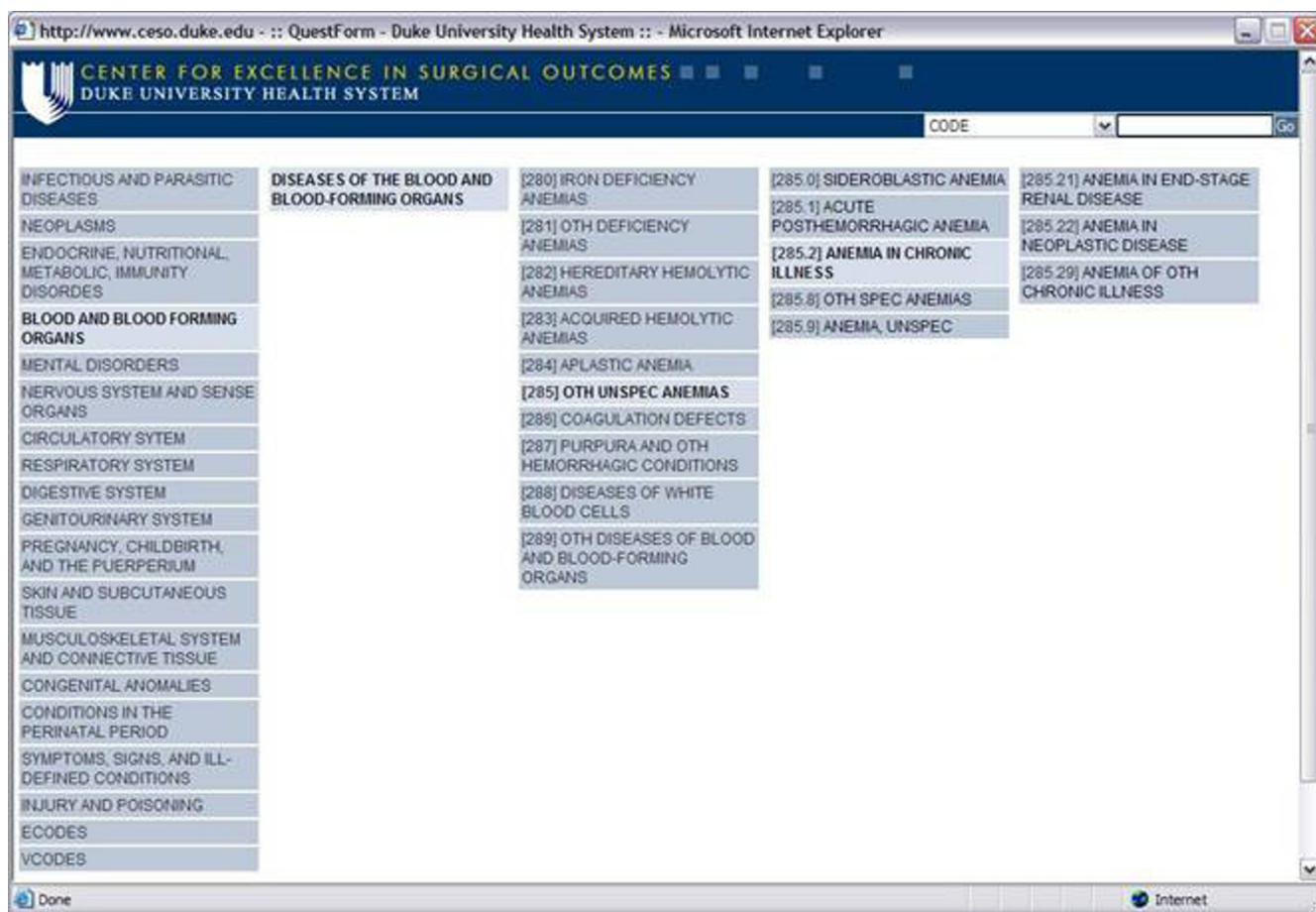


Figure 5
QuestForm application – Search engine for ICD9 codes

Research Manager helps identifying such problems and enables their early elimination, thus avoiding delays in the project completion. Finally, since weekly reports are generated to all participating members, Research Manager also provides peer-incentive for project members to complete their tasks in a timely manner.

Outcomes research application

Once the Question Diagram was evaluated by the clinical epidemiologist, this project was transferred to Research Manager. Contact information for each of the researchers involved and deadlines for completion of the main phases of the research process were set, including data extraction and cleaning, data analysis, literature review, and manuscript writing. Weekly reports were generated to update investigators on all tasks of the project, including different versions of the statistical analysis, modifications in the research question, and manuscript sections.

With an established project plan, the statistician in charge selected the best methods for analysis. Since the database is a random sample of the United States and requires special survey analysis methods, it was necessary that all involved researchers understood the statistical approach by using Analysis Charts.

Analysis charts

Analysis Chart is a tool designed to enhance the understanding of statistical methods to a format that is understandable by clinical researchers with different previous levels of statistical knowledge. As such, it is important in the design as well as the analysis phases of a project (Figure 7). The application was built using Extensible HyperText Markup Language (XHTML 1.0) [4] in combination with Cascading Style Sheets [11].

Analysis charts are composed by cascading links that display information about quantitative methods in progres-

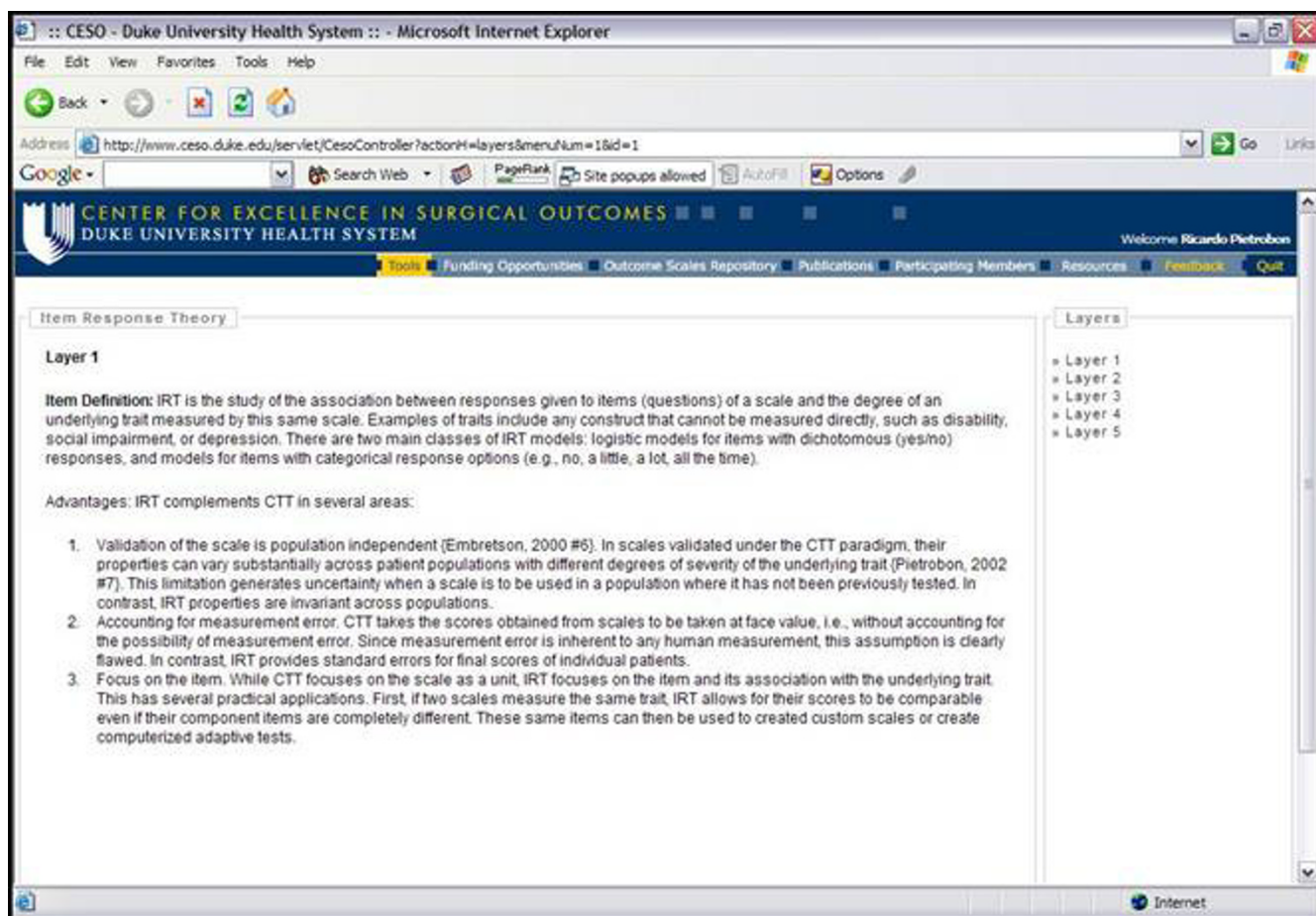


Figure 7
Analysis Chart

results were deemed to be accurate, Dr. Pietrobon started the literature review using a Literature Matrix.

Literature matrices

Literature matrices consist of a comprehensive but not necessarily exhaustive review of the literature focused on a narrow clinical topic (Figure 8). Each article is analyzed using the following criteria: study objectives, data sources, outcome variables, primary predictor variables, confounders, statistical analysis, results, established knowledge, and shortcomings. Each literature matrix is saved as an XHTML file that can be visualized in web browsers as well as imported in any commercial or open source spreadsheet applications such as Microsoft Excel® or Open Office Calc [12].

The advantage of the Literature Matrix as implemented in the Web suite is its availability over the web to the whole outcomes research community. This allows Literature Matrices to be constantly updated, with authors receiving

their due credit in a list of contributors. Literature Matrices also enable researchers to obtain a complete summary of the literature without going through the cumbersome process of copying and reading a manuscript for the first time. In contrast, researchers' time can be spent more efficiently in reviewing what has already been compiled and attempting to expand the Literature Matrix with other relevant bibliographic references.

Outcomes research application

In order to evaluate the literature, a graduate student performed a thorough literature search. All relevant articles were copied, read, and the data extracted according to the established categories. Once the Literature Matrix had been completed, Drs. Guller compared the current project results with results published in the literature. The structured information in Literature Matrices also allowed Dr. Guller to compare the strengths and weaknesses of the current project in relation to previous publications. Once

No.	Reference	Objective	Data_Sources	Inclusion/Exclusion	Outcomes	Main_Effects	Statistical_Analyses	Results
1	Journal of Arthroplasty	factors that predict the length of stay on surgical service after hip and knee	admitted to the Albany Medical Center for elective total hip/total knee	*Fracture, neoplasms excluded	*Length of stay *Need for rehabilitation	Marital status, BMI, COPD, diabetes, organic heart disease, RA, prior joint	Pearson's correlation coefficient	with increased length of stay (p= .0011) and need for discharge to rehabilitation
2	Journal of Arthroplasty	orthopedic literature to determine the effect of patient	identified via MEDLINE from 1966 onward with keywords (TJ, TKA on 60 patients in Singapore General Hospital between 1993	not evaluate the effect of patient characteristics on the outcome < 2 patients (< knees) died of unrelated causes. *2 patients were	function as defined as limitation in activity *mean knee Score *Mean Function Score *Incidence of UTI	weight, Marital status and social support, socioeconomic	Meta-analysis	? *Prolonged operating time (>2 hours) in diabetic patients increase risk factor for deep joint infections when four or
3	Journal of Arthroplasty	to determine the effects of medical and musculoskeletal comorbidity on	treated consecutively with total knee arthroplasty were		*postoperative nonsurgical complications level or accuracy	*surgical time *cost of implants and supplies *need for surgical intensive cat unit	Pearson's correlation coefficient, Questionnaires	more risk factors has significantly lowered 3-month short form physical
4	Journal of Arthroplasty	specific preoperative and postoperative parameters regarding their relationship between baseline pain and functional status	total knee endoprotheses implanted under standard conditions in 203 beneficiaries receiving total hip replacement (ICD 85 51)	hip fracture *Bilateral replacement with an interval of one month or less	*total and specific hospital	*Concomitant Diseases *Lutz and Klose Risk Score *American Society of age gender	analysis of variance (ANOVA)	with increased number of nonsurgical perioperative complications patients who had pain with walking, who had severe pain with walking, who participated in
5	Journal of Arthroplasty	relationship between baseline pain and functional status	total knee endoprotheses implanted under standard conditions in 203 beneficiaries receiving total hip replacement (ICD 85 51)	hip fracture *Bilateral replacement with an interval of one month or less	*total and specific hospital	*Concomitant Diseases *Lutz and Klose Risk Score *American Society of age gender	analysis of variance (ANOVA)	with increased number of nonsurgical perioperative complications patients who had pain with walking, who had severe pain with walking, who participated in
6	Journal of Arthroplasty	relationship between baseline pain and functional status	total knee endoprotheses implanted under standard conditions in 203 beneficiaries receiving total hip replacement (ICD 85 51)	hip fracture *Bilateral replacement with an interval of one month or less	*total and specific hospital	*Concomitant Diseases *Lutz and Klose Risk Score *American Society of age gender	analysis of variance (ANOVA)	with increased number of nonsurgical perioperative complications patients who had pain with walking, who had severe pain with walking, who participated in
7	Journal of Arthroplasty	relationship between baseline pain and functional status	total knee endoprotheses implanted under standard conditions in 203 beneficiaries receiving total hip replacement (ICD 85 51)	hip fracture *Bilateral replacement with an interval of one month or less	*total and specific hospital	*Concomitant Diseases *Lutz and Klose Risk Score *American Society of age gender	analysis of variance (ANOVA)	with increased number of nonsurgical perioperative complications patients who had pain with walking, who had severe pain with walking, who participated in

Figure 8 Literature Matrix

this phase was completed, Dr. Guller proceeded to the final writing of the manuscript using Output Templates.

Outcomes research application

At the end of the project, Dr. Guller combined the Question Diagram, Analysis Chart, and Literature Matrices to write the final manuscript. While Analysis Charts provided the information concerning the statistical techniques used in this study, Literature Matrices provided the basis for comparison of the study results against previous publications. Although not included in the final manuscript, Dr. Guller also had access to multiple analysis files through Research Manager to orient him in each of the steps taken during the research question formulation, data analysis, and literature review.

Use of web application by clinical researchers

The use of web applications by individual clinical researchers can be summarized in Figure 9.

Utility

Since the concept of streamlining the interdisciplinary collaboration preceded the existence of the current suite of web applications, different versions of the central idea have been gradually applied since the second half of 2002. Although our usability, qualitative, and economic studies to evaluate this application are still ongoing, we have noticed a significant improvement in the number and quality of our publications as evidenced by the increasing acceptance rates of our manuscripts for publication in peer-reviewed journals. The Web applications are currently used in research projects involving Duke University and other universities in the United States and abroad, where they have been shown to facilitate inter-institutional collaborations.

Discussion

Improving the efficiency of an interdisciplinary approach to secondary data analyses has multiple potential benefits.

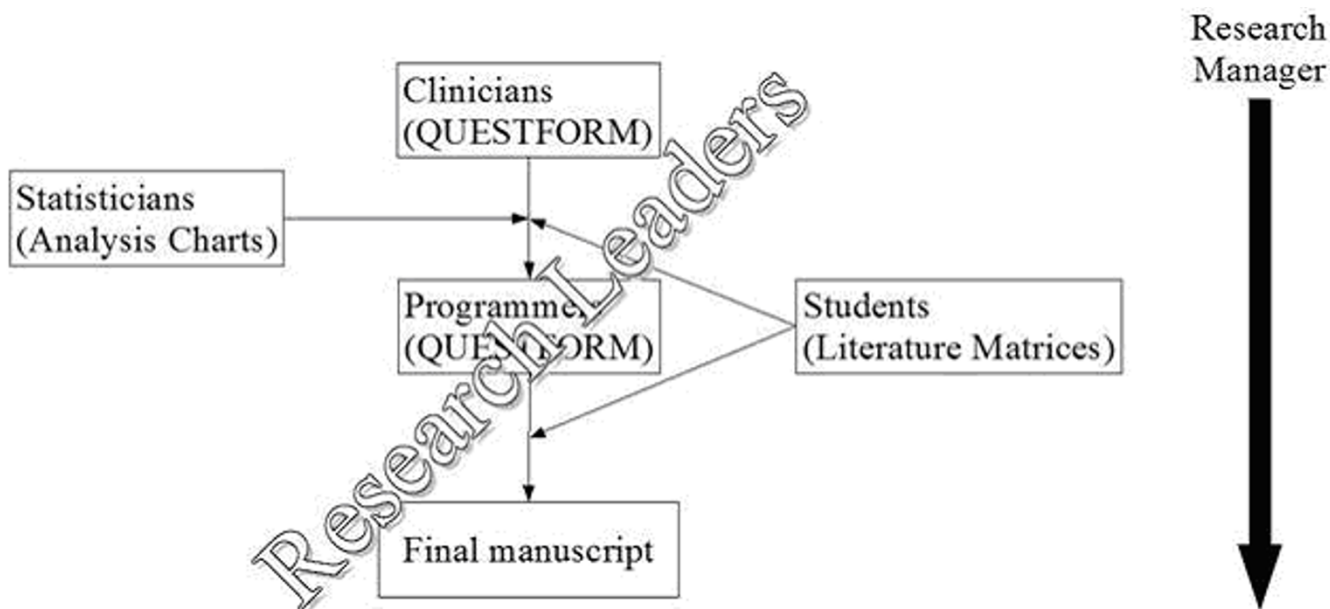


Figure 9
Integration between UR tools and clinical researchers

These include an increase in the overall clinical significance of the final publication, decrease in the number of failed projects, decrease in the time for completion of individual projects, improvement in the education of future outcomes researchers, decrease in the cost-benefit ratio for individual outcomes research projects, and, perhaps most importantly, an automation of repetitive tasks. This last factor is crucial since eliminating repetitive tasks will allow researchers to concentrate on the design of innovative projects [2].

Surprisingly, few systems and applications have been described to solve the problem of complex interdisciplinary collaboration between clinicians and statisticians. Isolated approaches have usually focused on specific portions of the outcomes research process, without attempting to integrate them into a cohesive system. For example, Marshall [13] has proposed the use of a secure Internet web site for collaborative medical research and data collection. While this system seems to achieve its proposed objectives, it does not improve the process of guiding teams in the translation of data into useful clinical information. Other systems have approached the process in a more comprehensive manner. The Research Toolbox [14], for example, is a software application that combines databases for literature searches in addition to providing templates for the scientific output. The system is applicable to any type of research, but lacks the ability to connect

researchers over the World Wide Web. It also does not address the formulation of research questions from existing databases, selection of statistical techniques, exchange of manuscripts, or project management. Finally, the Web-based Medical Information Retrieval System (WebMIRS) project, funded by the National Library of Medicine [15], allows researchers not only to evaluate the database content but also to perform the data extraction of specific subsets of the data set. In spite of its high performance as a research tool, WebMIRS is currently restricted to one single publicly available database (National Health and Examination Survey – NHANES), and does not contribute to other phases of the outcomes research process.

Although this newly developed system of applications provides a significant improvement in the way secondary data analyses are conducted, it still has limitations. First, because of the lack of a formal evaluation of the effectiveness of this system, we are unable to quantify its real time and cost saving benefits. Second, the system is currently restricted to secondary analyses and does not allow for the planning of prospective data collection. Although one of the main advantages of formulating a research question based on existing data sets is the bounded nature of the process, future applications should attempt to create rules and algorithms that may guide prospective data collection.

Conclusion

In summary, we have experienced that this system has significant advantages over the traditional manner of conducting outcomes research based on secondary data analyses. This tool may have important applications, not only resulting in an improvement in the overall efficiency of the outcomes research process, but also affecting the way new outcomes researchers are trained and introduced to a research environment.

Availability and requirements

The Web application is available at <http://www.ceso.duke.edu>

Abbreviations

XHTML Extensible HyperText Markup Language 1.0

JAVA: by Sun Microsystems

ICD9-CM: International Classification of Diseases, Ninth Revision – Clinical Modification

NIS: Nationwide Inpatient Sample

GNU: GNU's Not linux General Public License

WebMIRS: Web-based Medical Information Retrieval System

NHANES: National Health and Examination Survey

UR: Uniform Resource

Competing interests

The author(s) declare that they have no competing interests

Authors' contributions

Ricardo Pietrobon – design, manuscript drafting

Ulrich Guller – design, manuscript revision for important intellectual content

Henrique Martins – design, manuscript revision for important intellectual content, software programming

Andreia P Menezes – design, manuscript revision for important intellectual content

Laurence D. Higgins – design, manuscript revision for important intellectual content

Danny O. Jacobs – design, manuscript revision for important intellectual content

Acknowledgements

We thank Juliana and Guilherme Serzedello for assistance with manuscript formatting.

References

- Moses L, Louis TA: **Statistical consulting in clinical research: the two-way street.** *Stat Med* 1984, **3(1)**:1-5.
- Kong SX, Wertheimer Al: **Outcomes research: collaboration among academic researchers, managed care organizations, and pharmaceutical manufacturers.** *Am J Manag Care* 1998, **4(1)**:28-34.
- Cheung YB, Tan SB, Khoo KS: **The need for collaboration between clinicians and statisticians: some experience and examples.** *Ann Acad Med Singapore* 2001, **30(5)**:552-5.
- W3C, XHTML 1.0 The Extensible HyperText Markup Language (Second Edition)** [<http://www.w3.org/TR/xhtml1/>]
- MySQL** [<http://www.mysql.com/>]
- Long KH, Bannon MP, Zietlow SP, Helgeson ER, Harmsen WS, Smith CD, Ilstrup DM, Baerga-Varela Y, Sarr MG: **A prospective randomized comparison of laparoscopic appendectomy with open appendectomy: Clinical and economic analyses.** *Surgery* 2001, **129(4)**:390-400.
- Maxwell JG, Robinson CL, Maxwell TG, Maxwell BG, Smith CR, Brinker CC: **Deriving the indications for laparoscopic appendectomy from a comparison of the outcomes of laparoscopic and open appendectomy.** *Am J Surg* 2001, **182(6)**:687-692.
- The Healthcare Cost and Utilization Project Nationwide Inpatient Sample. Release 6.** 1997.
- The Ultimate Team Organisation Software (TUTOS)** [<http://www.tutos.org/>]
- GNU General Public Licenses** [<http://www.gnu.org/licenses/licenses.html>]
- W3C, Cascading Style Sheets** [<http://www.w3.org/Style/CSS/>]
- OpenOffice.org 1.02** [<http://www.openoffice.org/>]
- Marshall WW, Haley RW: **Use of a secure Internet Web site for collaborative medical research.** *Jama* 2000, **284(14)**:1843-9.
- Ltd., M.P., Research Toolbox System** [<http://www.researchtoolbox.com/>]. MCI (Pty) Ltd. Web site no longer available on October 10, 2004.
- Web-based Medical Information Retrieval System** [<http://archive.nlm.nih.gov/proj/webmirs/index.php>]

Pre-publication history

The pre-publication history for this paper can be accessed here:

<http://www.biomedcentral.com/1471-2288/4/29/prepub>

Publish with **BioMed Central** and every scientist can read your work free of charge

"BioMed Central will be the most significant development for disseminating the results of biomedical research in our lifetime."

Sir Paul Nurse, Cancer Research UK

Your research papers will be:

- available free of charge to the entire biomedical community
- peer reviewed and published immediately upon acceptance
- cited in PubMed and archived on PubMed Central
- yours — you keep the copyright

Submit your manuscript here:
http://www.biomedcentral.com/info/publishing_adv.asp

