

RESEARCH ARTICLE

Open Access

Transcriptional control by two leucine-responsive regulatory proteins in *Halobacterium salinarum* R1

Rita Schwaiger¹, Christoph Schwarz², Katarina Furtwängler¹, Valery Tarasov¹, Andy Wende³ and Dieter Oesterhelt*¹

Abstract

Background: Archaea combine bacterial-as well as eukaryotic-like features to regulate cellular processes. *Halobacterium salinarum* R1 encodes eight leucine-responsive regulatory protein (Lrp)-homologues. The function of two of them, *lrp* (OE3923F) and *lrpA1* (OE2621R), were analyzed by gene deletion and overexpression, including genome scale impacts using microarrays.

Results: It was shown that Lrp affects the transcription of multiple target genes, including those encoding enzymes involved in amino acid synthesis, central metabolism, transport processes and other regulators of transcription. In contrast, LrpA1 regulates transcription in a more specific manner. The *aspB3* gene, coding for an aspartate transaminase, was repressed by LrpA1 in the presence of L-aspartate. Analytical DNA-affinity chromatography was adapted to high salt, and demonstrated binding of LrpA1 to its own promoter, as well as L-aspartate dependent binding to the *aspB3* promoter.

Conclusion: The gene expression profiles of two archaeal Lrp-homologues report in detail their role in *H. salinarum* R1. LrpA1 and Lrp show similar functions to those already described in bacteria, but in addition they play a key role in regulatory networks, such as controlling the transcription of other regulators. In a more detailed analysis ligand dependent binding of LrpA1 was demonstrated to its target gene *aspB3*.

Background

The basal transcription apparatus in Archaea shows similarity to the eukaryotic RNA polymerase (RNAP) II system [1-4]. Archaeal promoter sequences and the core proteins RNA polymerase (RNAP), TATA-binding protein (TBP), and the transcription factor IIB homologue (TFB) are structurally and functionally related to their eukaryotic counterparts [2,5]. Although the basal transcriptional complex is composed of eukaryotic-like components, archaeal regulatory proteins are often homologous to bacterial regulators [6]. One group of bacterial regulators which have been found in all archaeal genomes belongs to the Lrp/AsnC family (leucine-responsive regulatory protein (Lrp), asparagine synthase C (AsnC)). *Escherichia coli* Lrp is the most extensively studied member in bacteria [7,8] and controls the expression of up to 75 target genes. As a global regulator of transcription, Lrp is believed to coordinate cellular

metabolism in response to nutritional and environmental alterations [9]. Most of these genes are involved in amino acid metabolism. Lrp can bind to DNA in its homodimeric form and either represses or activates transcription, modulated by the effector molecule L-leucine. Negative autoregulation of Lrp, however, occurs in a leucine independent way [10].

Genes encoding putative Lrp/AsnC-homologues have been studied in several archaea [11], including *Methanocaldococcus jannaschii* [12-14], *Sulfolobus* species [15-17] and *Pyrococcus* species [18,19]. As demonstrated for the *Sulfolobus solfataricus* Ss-Lrp and Lrs14, those Lrp/AsnC-homologues were shown to bind to their own promoter regions, thereby repressing transcription [20-22]. Besides controlling its own gene expression, *Sulfolobus solfataricus* Ss-LrpB positively regulates the pyruvate ferredoxin oxidoreductase (POR) encoding operon and two permease genes [23,24]. Another Lrp-like protein, LysM from *S. solfataricus*, regulates the expression of the *lysWXJK* operon encoding lysine biosynthetic enzymes. In fact, *in vitro* binding of LysM to the *lysW* promoter takes place only if lysine is absent [25]. Footprint analysis

* Correspondence: oesterhe@biochem.mpg.de

¹ Max Planck Institute of Biochemistry, Department of Membrane Biochemistry, Am Klopferspitz 18, 82152 Martinsried, Germany
Full list of author information is available at the end of the article

of the Sa-Lrp gene from *Sulfolobus acidocaldarius* revealed multiple binding sites in the promoter region [26], a pattern that had been described earlier for bacterial Lrp proteins [27]. Leucine has been suggested as a possible cofactor for Sa-Lrp under certain physiological conditions [26].

In *M. jannaschii*, not only do the Lrp-like proteins Ptr1 and Ptr2 regulate their own transcription, but Ptr2 can activate transcription of the ferredoxin (*fdx*) and the rubredoxin (*rb2*) genes by facilitating recruitment of TBP to their promoters [13]. In a *Pyrococcus furiosus* cell-free transcription system, LrpA exerts negative autoregulation of its own transcription [19] by interfering with the recruitment of RNA polymerase [28]. Crystal structures determined for several bacterial and archaeal Lrp-like proteins (for an overview, see [29]) show that they contain a N-terminal helix-turn-helix DNA-binding domain (HTH). A flexible hinge connects this domain with the C-terminal oligomerization and effector binding domain [30-32]. The latter forms a so-called RAM-domain (regulation of amino acid metabolism-domain) [33], designed to bind an effector molecule in the interface between the two dimers. A structure alignment of archaeal and bacterial Lrp-homologues is shown in additional file 1.

In halophilic archaea relatively little is known about Lrp-like-regulators. The current study focuses on the Lrp-like-regulators, LrpA1 and Lrp in *H. salinarum* R1. To identify Lrp-targets, deletion mutants (Δlrp , $\Delta lrpA1$) as well as strains upregulated in these genes (*lrp*, *lrpA1*) were compared pairwise against the parental strain R1 by DNA-microarrays. These results demonstrated that Lrp exerts a global transcriptional control in this organism. On the other hand, LrpA1 was shown to possess a specific regulatory function targeting the aspartate transaminase gene (*aspB3*). We demonstrated effector molecule dependent binding of LrpA1 to the *aspB3* promoter by DNA-affinity chromatography, as well as effector molecule dependent gene expression of *aspB3* by northern analysis.

Results

Specific transcriptional control by LrpA1 in *H. salinarum* R1

Of the eight Lrp-homologues found *H. salinarum*, *lrpA1* and *lrp* are located next to genes involved in amino acid metabolism (*aspB3* aspartate transaminase, *glnA* glutamine synthetase), suggestive of a direct regulatory influence. To confirm this, and to identify other possible targets of LrpA1 we used DNA-microarrays. Two genetic approaches, either a deletion strain of *lrpA1* ($\Delta lrpA1$) or an overexpressing strain (*lrpA1*), were compared pairwise against the *H. salinarum* R1 parental strain. Target genes showing reciprocal regulatory changes between the deletion strain and the overexpression strain, reflect the regulatory effects of LrpA1 (Table 1). The deletion and

overexpressing strains grew as well as the parental strain in complex medium (additional file 2). The deletion mutant was verified by southern blot analysis (additional file 3). Induction of *lrpA1* transcription in the overexpressing strain was shown by microarray-analysis. Level of LrpA1 expression was 24-fold higher in overexpression mutant than in wild type (Table 1) and a complete list of significantly differentially expressed genes is presented in (additional file 4)

As expected, transcription of *aspB3*, the gene adjacent to *lrpA1*, was affected by the absence or overexpression of *lrpA1*. In the *lrpA1* background (Table 1), *aspB3* showed slight repression, while deletion of *lrpA1* led to strong induction. Another LrpA1 target gene identified by the microarray analysis was *tfbB*, the basal transcriptional regulator gene. This gene was repressed by LrpA1-overexpression. Additionally, strong repression was found for OE6130F, the gene encoding a hypothetical protein of unknown function. OE6130F is located on the plasmid PHS2. Its adjacent genes are OE6128R encoding a conserved hypothetical protein and OE6133R encoding a transposase.

In the $\Delta lrpA1$ mutant, induction of *aspB3* and OE6130F was confirmed by RT-qPCR, which showed reductions in transcript levels of 19- and 28-fold, respectively (additional file 5)

Organisation of *lrpA1* and *aspB3* operons of *H. salinarum* R1

Since the DNA-microarray analysis showed that *aspB3* is the most prominent target for LrpA1, we performed further investigations on the regulation of *aspB3* by LrpA1. *lrpA1* and *aspB3* are orientated in opposite directions and have separate promoters. In other halophilic organisms, like *Natronomonas pharaonis*, *Haloquadratum walsbyi* and *Haloarcula marismortui*, these genes are orientated in the same direction and share one common promoter (Fig 1).

The transcription start sites and 3'ends of *lrpA1* and *aspB3*, were located using 5'3'-RACE, based on the circularisation of RNA. *lrpA1* was found to be transcribed as a leaderless mRNA, starting at the first G of the start codon, GTG (Fig. 2). The putative TATA-box of *lrpA1* is located -27 bp upstream of the transcriptional start site (Fig. 2). Possible regulator protein binding sites were found at positions -31 to -25 and -12 to -6. In *M. jannaschii* AT rich inverted repeat sequences have been demonstrated to be DNA-binding motifs for Lrp-like transcriptional regulators [12]. Another cis-element in the *lrpA1* promoter is two adenines at position -11/-10, consistent with the basal promoter motif previously described [34]. As a consequence of the overlap of these genes, the *lrpA1* 3' untranslated region (3'UTR) shows complementarity to the ORF of *aspB3* over 25 bp (Fig. 2), a consequence of the overlap of these genes. No uridine

Table 1: Differentially expressed genes in $\Delta lrpA1$ and *lrpA1*

ID	$\Delta lrpA1$	<i>lrpA1</i>	gene	name
	-fold change	-fold change		
<i>Transcriptional regulators (REG)</i>				
OE2621R	-3.2	24.4	<i>lrpA1</i>	transcription regulator LrpA1
<i>Amino acid metabolism (AA)</i>				
OE2619F	5.1	-1.2	<i>aspB3</i>	aspartate transaminase
<i>Transcription (TC)</i>				
OE2084R	1.4	-2.4	<i>tfbB</i>	transcription initiation factor TFB
<i>Miscellaneous (MIS)</i>				
OE6130F	6.7	-6.3	-	conserved hypothetical protein

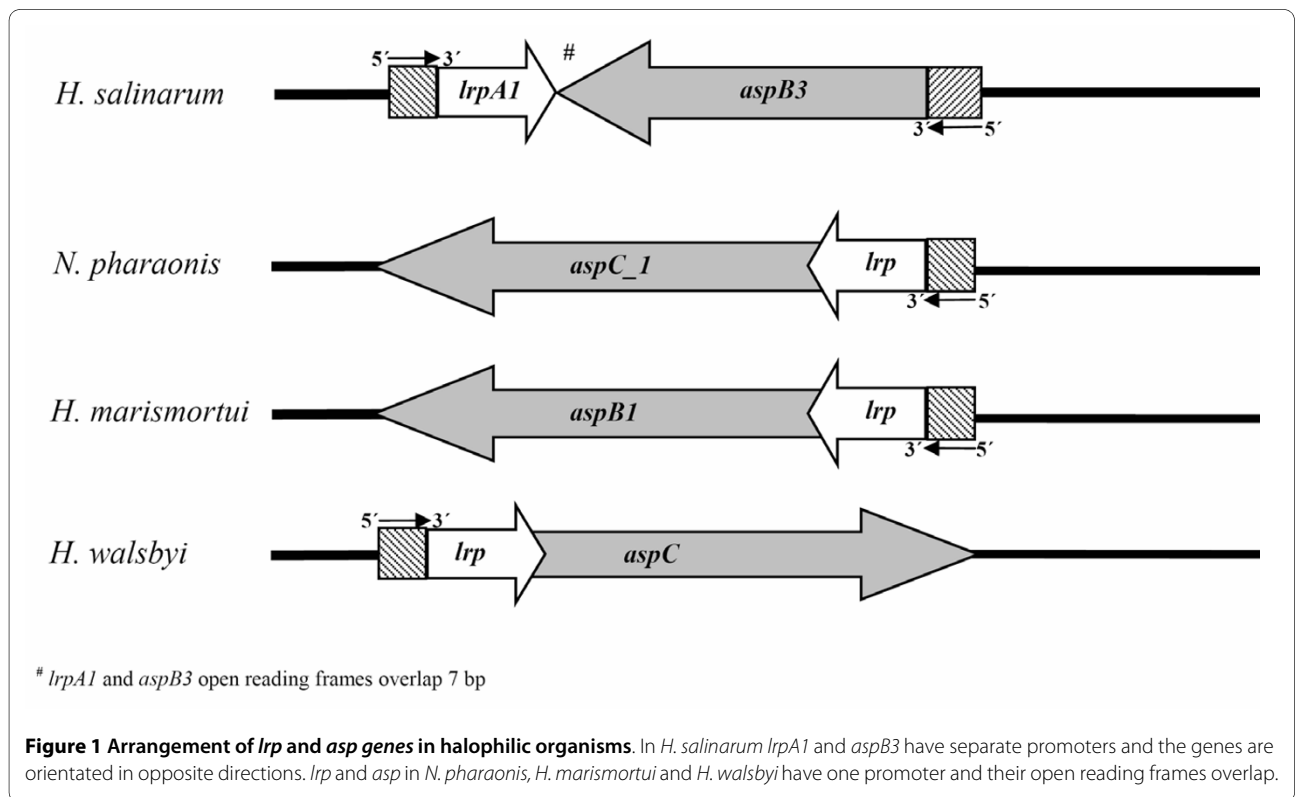
rich terminator sequence was identified for the *lrpA1* transcript (Fig. 2).

In contrast to *lrpA1*, the *aspB3* transcript has a 5'UTR leader sequence of 31 bp, without a Shine-Dalgarno sequence upstream of the AUG start codon (Fig. 2). Inspection upstream of the *aspB3* transcription start site revealed, that the *aspB3* promoter does not contain a consensus TATA-box at the expected position (-24 to -27). The 3'UTR of *aspB3* included a 127 bp terminal

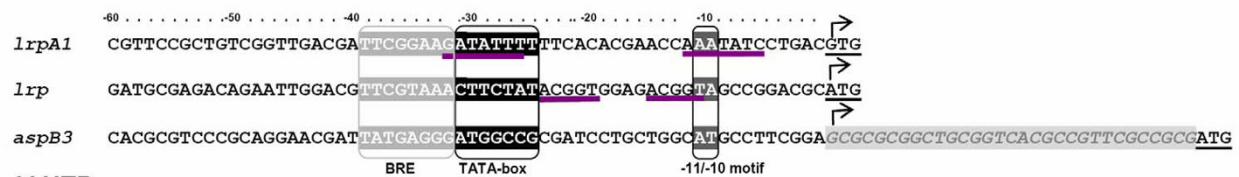
sequence that is complementary to the 3'end of *lrpA1*. No characteristic termination signal was detected in this region (Fig. 2).

LrpA1 binds to the *aspB3* and to its own promoter

Several bacterial and archaeal Lrp-homologues are known to bind to their own promoter as well as to the promoters of target genes [10,11,35]. The binding of LrpA1 to its own promoter and to the *aspB3* promoter



Promoter



3' UTR



Figure 2 Mapping of 5'UTR (*lrpA1*, *lrp*, *aspB3*) and 3'UTR (*lrpA1*, *aspB3*). The transcriptional start site is marked by an arrow, the start codon is underlined. Putative TATA-box, BRE-element and the -11/-10-motif are boxed. Possible DNA-binding motifs are underlined (violet). The 5'leader sequence of *aspB3* is shaded in grey. 3'UTR of *lrpA1* and *aspB3* are shaded in grey, the stop codon is underlined.

region was examined using analytical DNA-affinity chromatography, adapted to halophilic conditions. Because the exact binding sites for LrpA1 in the promoter regions of *lrpA1* and *aspB3* were unknown, the complete non-coding region upstream of these two genes was amplified. These PCR products were designated as *lrpA1*_{P_{incl}} and *aspB3*_{P_{incl}}; (promoter sequence inclusive; Fig. 3A,B) with a length of 234 bp and 208 bp, respectively. An additional PCR product was generated where the inverted repeat sequence in the *lrpA1* promoter region was mutated (indicated by red asterisk in Fig. 3A). There was no corresponding inverted repeat sequence in the *aspB3* promoter (Fig. 3B). As a non-specific binding control in the assay, we used the flagellin gene *flgB1*. The DNA fragments *lrpA1*_{P_{incl}}, *aspB3*_{P_{incl}} and the control fragment *flgB1* were amplified using a biotin labelled primer and subsequently coupled to a streptavidin sepharose matrix. Heterologously expressed LrpA1, tested for correct folding by CD-spectroscopy and size exclusion chromatography (additional file 6), was then incubated with DNA fragments and eluted protein fractions analyzed on SDS-PAGE (Fig. 4).

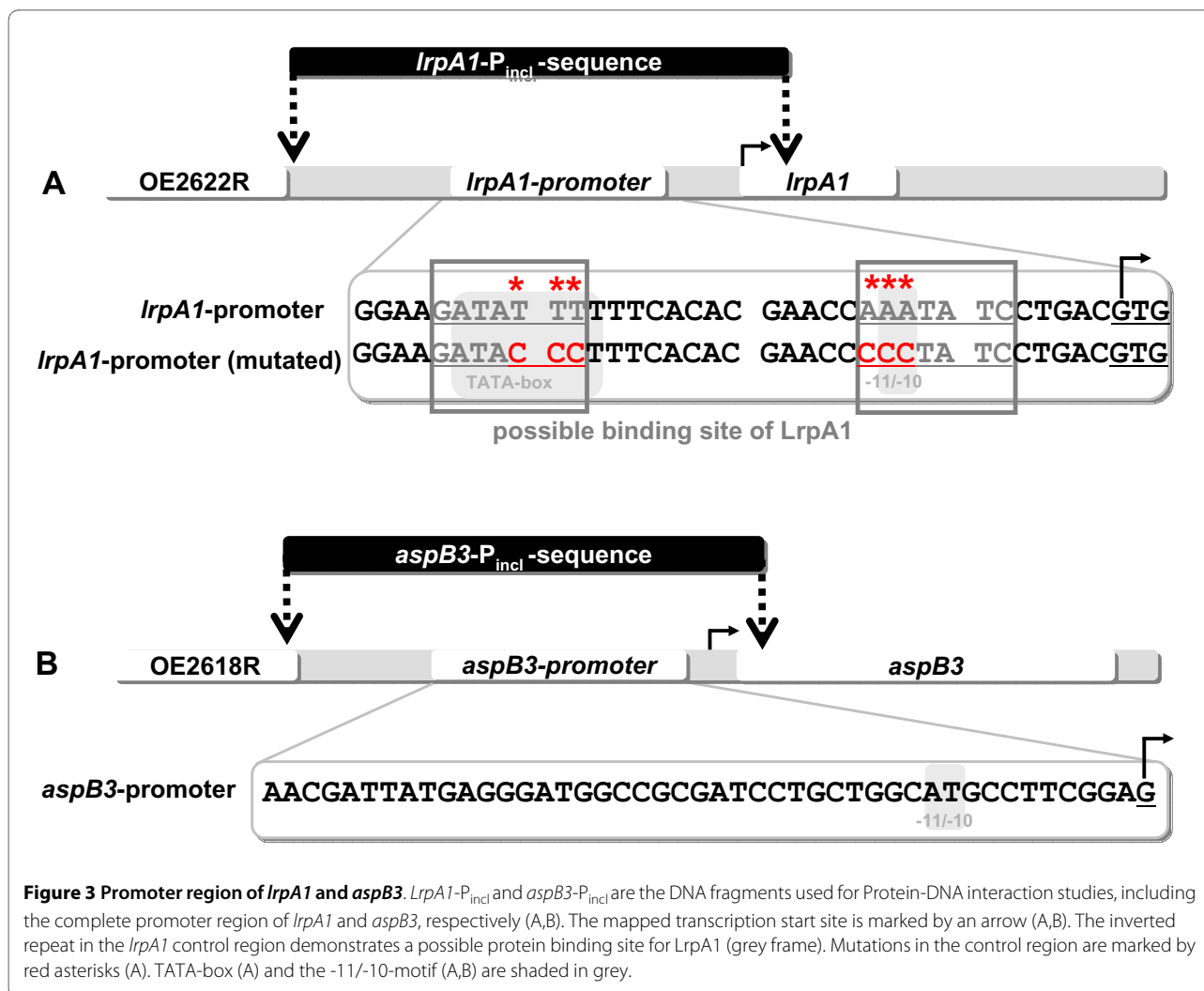
As shown in Fig. 4A, LrpA1 binds to the *lrpA1*_{P_{incl}} fragment. Mutation of the inverted repeat in this sequence (indicated by asterisks in Fig. 3A) prevented binding of LrpA1 (Fig. 4A). In conjunction with the current knowledge about other Lrp-homologues, these results suggest LrpA1 is subject to negative autoregulation [11]. A weaker binding of LrpA1 to the *aspB3*_{P_{incl}} fragment was also demonstrated (Fig. 4B). Lrp-homologues often control gene expression together with a ligand molecule. Therefore we tested aspartate as a possible effector molecule of the *aspB3* gene expression. 5 mM aspartate was added to the binding experiment, resulting in significantly enhanced binding of LrpA1 to the *aspB3*_{P_{incl}} sequence (Fig. 4B). If 5 mM arginine was used instead of aspartate, the binding efficiency of LrpA1 to the

*aspB3*_{P_{incl}} fragment was not enhanced (Fig. 4C), indicating that the interaction shows specificity for aspartate. Table 2 shows the relative binding efficiencies of LrpA1 to sepharose-bound DNA fragments calculated from 3 independent binding experiments. Both lanes, the monomer and the dimer, were included in our calculations of band densities. According to the estimated molecular weight, the upper band represents protein dimers. The presence of LrpA1 dimers after treatment with heat and SDS indicates that they are stable to these denaturing conditions. Thus, LrpA1-DNA binding studies showed that LrpA1 binds to its own promoter, as well as to the *aspB3* promoter enhanced by aspartate (Fig. 4).

LrpA1 regulates transcription of *aspB3* in an aspartate dependent manner

H. salinarum possesses three different aspartate transaminases, AspB1, AspB2 and AspB3 (see sequence comparison in additional file 7). All belong to subgroup Ib of the aspartate transaminases [36], and share 35, 37 and 32% sequence identity, respectively, with the *Thermus thermophilus* enzyme [37]. Aspartate transaminases catalyze the reversible conversion of aspartate and oxoglutarate to oxaloacetate and glutamate.

Since LrpA1 appears to regulate the expression of *aspB3*, we first investigated the transcription of *lrpA1* during different growth phases using northern blot hybridization and a specific probe against *lrpA1* (429 bp) (Fig. 5). In the wild type strain, *lrpA1* transcripts remained constant at cell densities of 0.2 to 0.8 (OD₆₀₀). Although the *lrpA1* transcript could be detected during stationary phase, its amount decreased (Fig. 5). These results show that *lrpA1* transcripts accumulate during exponential growth. Therefore, to test the regulation of *aspB3* by LrpA1 in an aspartate and glutamate dependent manner, wild type and the Δ *lrpA1* cells were cultivated up to cell densities in the range of 0.2 to 0.8 (OD₆₀₀) either in

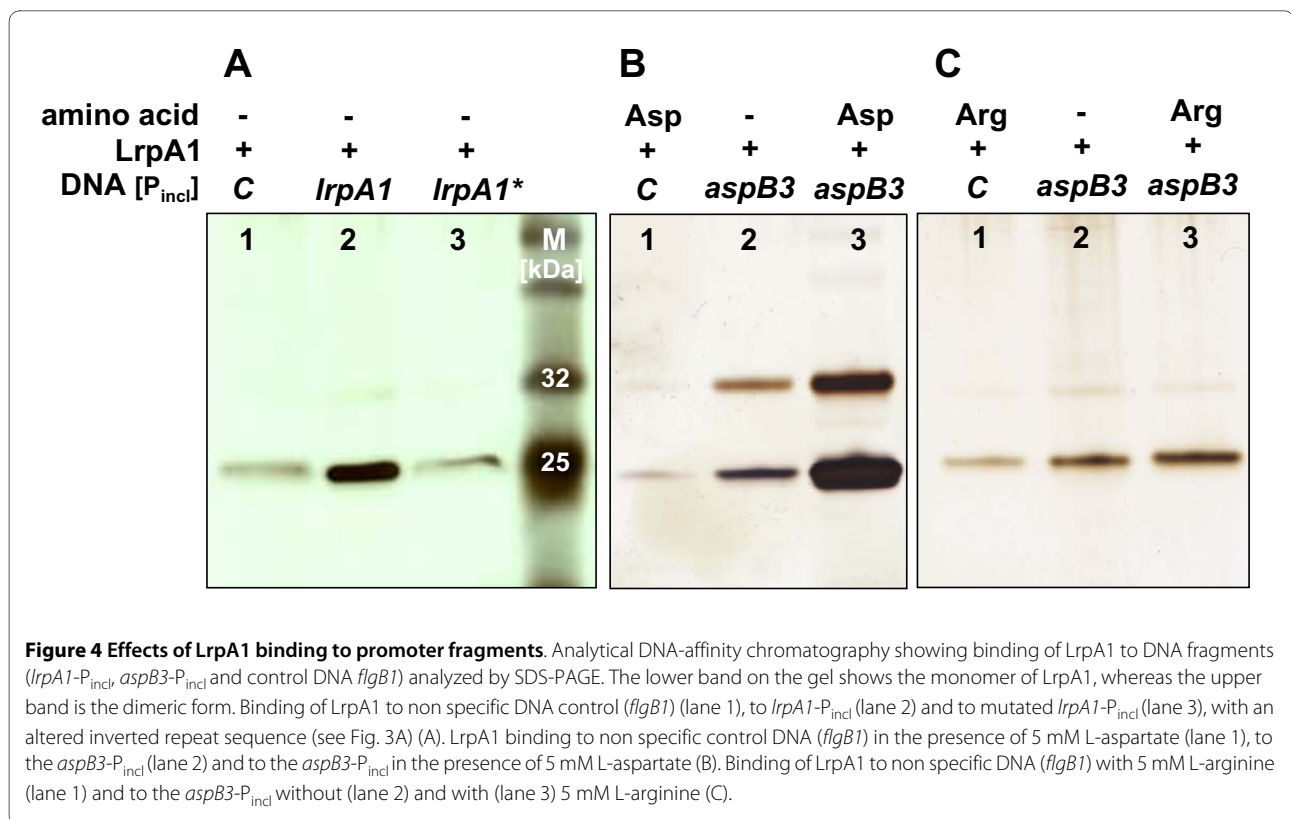


a complex medium or in a synthetic medium, in the presence or absence of aspartate or glutamate. RNA was extracted and analyzed on northern blots using an *aspB3* specific probe (Fig. 6A-6B). This hybridized to a corresponding transcript with the expected size of *aspB3* (1107 nt). In complex medium, *aspB3* was slightly induced at the beginning of the exponential growth phase (Fig. 6A). In contrast, in synthetic medium supplemented with aspartate and glutamate, *aspB3* was induced in the early stationary phase (OD₆₀₀ = 0.8) (Fig. 6B-1). While in synthetic medium with aspartate a slight induction of *aspB3* was observed in the early stationary phase (Fig. 6B-2). In synthetic medium with glutamate, *aspB3* was already abundant in the early exponential growth phase (OD₆₀₀ = 0.2) (Fig. 6B-3). When both amino acids (asp, glu) were omitted, *aspB3* showed high induction at a cell density of 0.2 and slight induction at 0.8 (Fig. 6B-4).

In synthetic medium, *H. salinarum* showed similar growth behaviour whether or not aspartate was present (Fig. 6D). These results show that *aspB3* transcription is

repressed in the presence of aspartate. If there is no aspartate in the synthetic medium (Fig. 6B-3,4), or it has been metabolized in the early stationary phase, repression is released, and synthesis of aspartate from glutamate ensues.

At cell densities of $\geq 10^9$ cells/ml (OD₆₀₀ ≥ 1.0) *H. salinarum* R1 has been reported to rapidly metabolize aspartate [38]. Previously reported growth studies of *H. salinarum* R1 have shown that when media have both aspartate and glutamate present, the former amino acid is metabolized rapidly while the levels of the latter remains constant [38]. To test the regulatory effect of LrpA1 on the *aspB3* gene transcription, mRNA levels of *aspB3* were analyzed in Δ *lrpA1* cells grown with or without aspartate or glutamate (Fig. 6C). We observed an increased and constitutive transcription, independent of the added amino acids. This demonstrates unambiguously the involvement of LrpA1 in the regulation of the *aspB3* gene expression.



Multiple transcriptional control by Lrp in *H. salinarum*

Residues in the sequence of LrpA1 and Lrp predicted to be involved in ligand specificity of the binding pocket are different in both regulators (additional file 1) and therefore a different control of targets was expected. *lrp* is located next to the glutamine synthetase gene *glnA*, with-

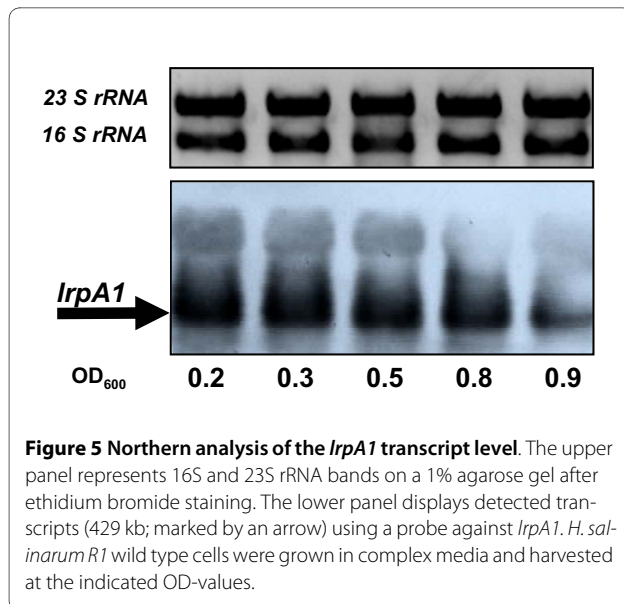
Table 2: Relative binding efficiencies of LrpA1 to sepharose-bound DNA fragments

DNA-fragment	band density	% ^a
<i>lrpA1</i> -P _{incl}	846 ± 280	100%
<i>lrpA1</i> -P _{incl} (mutated)	201 ± 33	24%
control-DNA (C)	313 ± 70	37%
<i>aspB3</i> -P _{incl} (+ 5 mM asp)	1404 ± 228	100%
<i>aspB3</i> -P _{incl}	473 ± 220	34%
control-DNA (+ 5 mM asp) (C)	92 ± 33	7%
<i>aspB3</i> -P _{incl} (+5 mM arg)	175 ± 94	100%
<i>aspB3</i> -P _{incl}	52 ± 22	77%
control-DNA (+ 5 mM arg) (C)	135 ± 69	30%

^a Average and standard deviation values are based on three separate experiments

out a sequence overlap. The mapped transcription site is at the A of the start codon ATG (Fig. 2). Target genes for Lrp were identified using the same approach as described for LrpA1 (additional file 2, 3). Target genes showing reciprocal regulatory changes between the deletion strain (Δ *lrp*) and the overexpression strain (*lrp*), suggesting the direct regulatory effects of Lrp (Table 3). Induction of *lrp* transcription in overexpressing strains was shown by microarray-analysis. In the overexpression mutant, levels of *lrp* is 46-fold higher than in wild type (Table 3). The successful overexpression of Lrp was proven by western blot analysis using a specific antibody against Lrp (additional file 8). A complete list of significantly differentially expressed genes is presented in additional file 9.

Besides genes of the amino acid metabolism, the targets affected by Lrp were genes of central intermediary metabolism, (Fig. 7; Table 3). For example, *glnA*, the gene next to *lrp*, was induced in the Lrp-overexpression strain. The glycerol dehydrogenase gene, *gldA1* was repressed by Lrp, whereas *korAB*, encoding the oxoglutarate oxidoreductase complex, which is part of the TCA-cycle was induced. Additionally the *car* gene, encoding a transducer protein involved in signal transduction processes was repressed in the presence of Lrp-overexpression. Genes involved in transcriptional regulation were also affected



by Lrp. The transcriptional regulator sirR, a homologue of the staphylococcal iron regulator repressor and the basal transcription factor gene *tfbF*, were found to be

induced by Lrp-overexpression (Fig. 7; Table 3) [39]. Lrp-overexpression produced induction of transporter genes, like *pstC2* and *phnC*, which belong to phosphate transport operons (Fig. 7; Table 3).

Discussion

Lrp-homologues have been described for several bacterial and archaeal organisms, but not yet for halophilic archaea. Here we investigated the function of a halophilic Lrp-homologue, LrpA1. Additional file 1 shows an alignment of LrpA1 with other archaeal and bacterial Lrp-homologues. High sequence similarity was observed with LrpA (PF1601) from *P. furiosus*. The low sequence identity in the ligand binding pocket, named RAM-domain (additional file 1; $\beta 3\beta 4$) between LrpA1 and Lrp suggests different regulatory mechanisms (additional file 1). The *H. salinarum* LrpA1 binding pocket belongs to a subgroup of the Lrp-like proteins, which includes some that might be effector-independent [32] and some for which the effector regulation is unknown (additional file 1). The Lrp ligand binding site shows high amino acid conservation with *S. solfataricus* LysM which probably binds lysine [25] (additional file 1). We therefore expect the *H.*

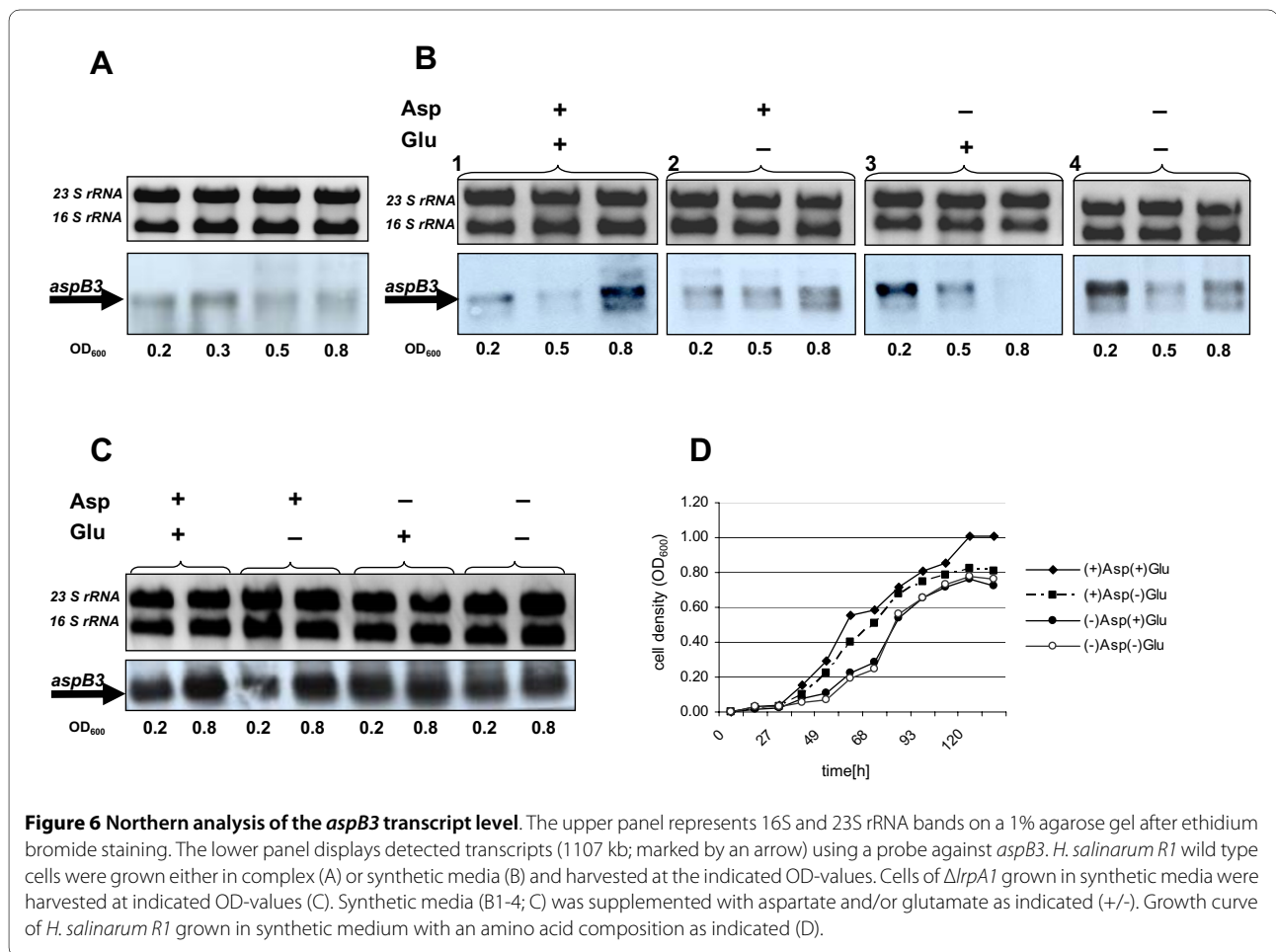


Table 3: Differentially expressed genes in Δlrp and *lrp*

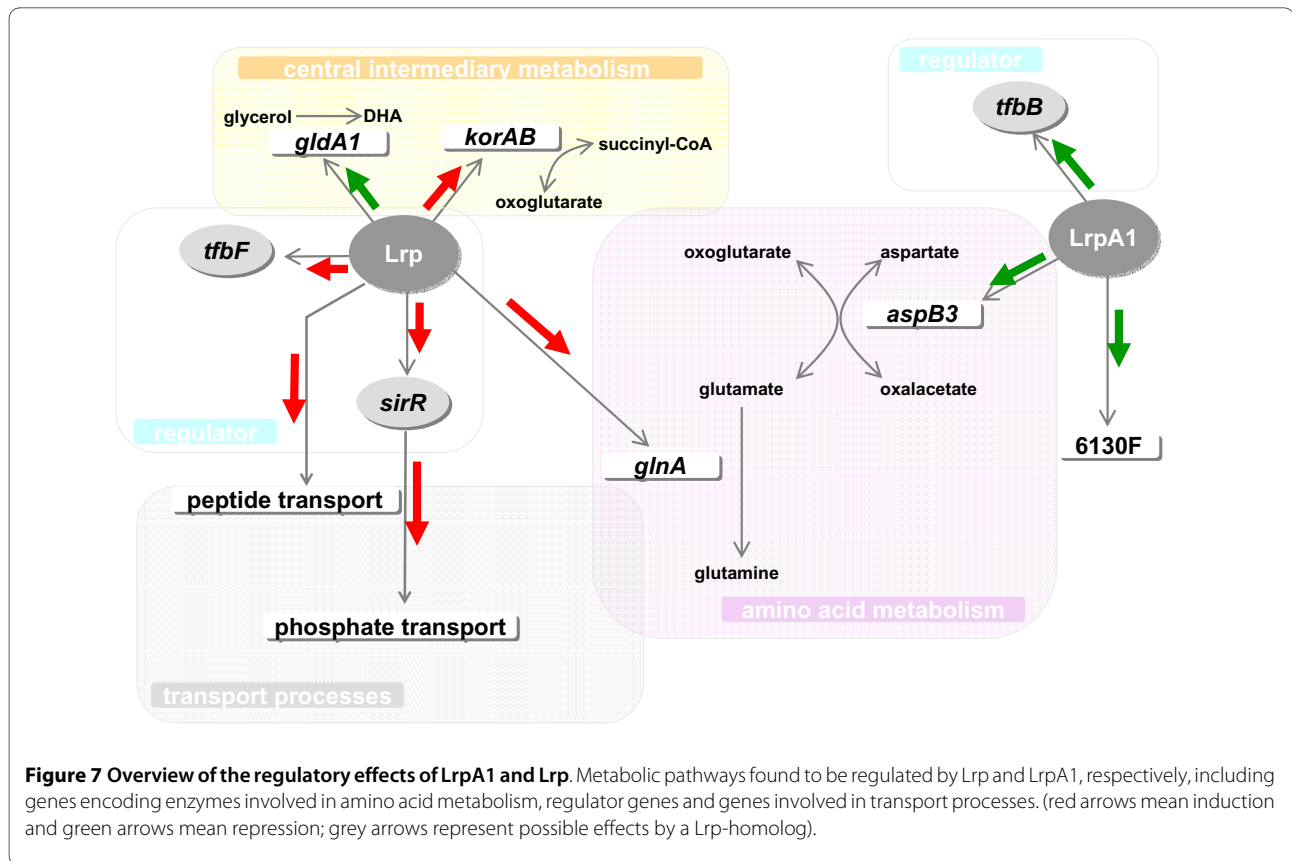
ID	Δlrp	<i>lrp</i>	gene	name
	-fold change	-fold change		
<i>Transcription (TC)</i>				
OE1478R	-1.6	1.7	<i>tfbF</i>	transcription initiation factor TFB
<i>Transport processes (TP)</i>				
OE1678R	-1.8	1.6	<i>pstC2</i>	ABC-phosphate transporter permease
OE3908R	-1.8	1.8	<i>phnC</i>	ABC-phosphate transporter ATP binding protein
OE4301R	-2.2	1.8	<i>dppF1</i>	ABC-peptide transport ATP binding protein
OE4302R	-2.4	1.9	<i>dppD1</i>	ABC-peptide transport ATP binding protein
OE4303R	-1.9	1.8	<i>dppC1</i>	ABC-peptide transport permease
OE4552F	-2.3	2.0	<i>dppB2</i>	ABC-peptide transport permease
<i>Amino acid metabolism (AA)</i>				
OE3922F	-1.5	2.1	<i>glnA</i>	glutamine synthetase
<i>Central intermediary processes (CIM)</i>				
OE1710R	-1.9	2.0	<i>korB</i>	oxoglutarate ferredoxin oxidoreductase β -subunit
OE1711R	-2.9	2.3	<i>korA</i>	oxoglutarate ferredoxin oxidoreductase α -subunit
OE5160F	2.5	-1.9	<i>gldA1</i>	glycerole dehydrogenase
<i>Signal transduction (SIG)</i>				
OE5243F	1.7	-2.7	<i>car</i>	transducer protein Car

salinarum Lrp to be a ligand dependent regulator, which is a subject of future investigation.

LrpA1 was shown to be regulated by aspartate and since this protein is a specific regulator of two different promoter sequences, *lrpA1* and *aspB3*, we hypothesize that the *lrpA1* and *aspB3* gene expression is reciprocally regulated (Fig. 8). For LrpA1, we suggest an inverted repeat in the *lrpA1* promoter as a putative protein binding site, whereas the *aspB3* promoter lacks such a sequence. At first glance, it seems surprising that LrpA1 binds to two different promoter structures, but as shown for *E. coli* Lrp, promoter target sites may share only weak sequence conservation [7]. In the exponential phase *lrpA1* expression is maximal. Since L-aspartate is present in the medium the binding of LrpA1 to the *aspB3* promoter is enhanced. Once aspartate is metabolized, small conformational changes in LrpA1 might occur that allow it to bind to the *lrpA1* promoter (Fig. 8). As the repression of the *aspB3* gene is abrogated, transcription of aspartate transaminase will be initiated in order to synthesize aspartate from glutamate (Fig. 8). This model of LrpA1 regulation could explain a direct influence of LrpA1 in regulating its neighbour gene *aspB3*. The DNA-microar-

ray data indicate that LrpA1 regulates the expression of *aspB3*.

In contrast to LrpA1, another Lrp-homologue named Lrp affects the transcription of genes encoding proteins involved not only in amino acid but also in central metabolism. For many organisms, Lrp acts as both an activator and a repressor of transcription. Like *E. coli* Lrp, the Lrp of *H. salinarum* R1 affects the regulation of amino acid metabolism and genes encoding peptide transporter *dpp* (Fig. 7; Table 3). Lrp binding sites in *H. salinarum* NRC-1, a strain that shows a 99.9% sequence identity to *H. salinarum* R1 [40], have been previously reported [40]. In NRC-1 Lrp-homologues are designated as Trh and nine of them are annotated in the genome of *H. salinarum* NRC-1. *H. salinarum* R1 LrpA1 (OE2621R) and Lrp (OE3923F) are 100% identical with the *H. salinarum* NRC-1 Trh7 and Trh4, respectively, the latter one was previously analyzed [41]. Comparison of our data with the published NRC-1 data revealed that, out of all the affected genes, only three were showing the same trends in both: the glutamine synthetase gene, *glnA*, which is located adjacent to *lrp*; the glycerol dehydrogenase gene, *gldA1* and the transducer gene, *car* (Table 3). *GldA1* was



repressed by Lrp in *H. salinarum* R1. The metabolism of glycerol is complex. It can either be converted to dihydroxyacetone (DHA) by glycerol dehydrogenase GldA1 [42], or phosphorylated by glycerol kinase to glycerol-3-phosphate. The latter can be fed into glycolysis as dihydroxyacetone phosphate (DHAP), or is converted to glycerol-1-phosphate which is used as a substrate for the production of archaeal phospholipids. However, the fate of DHA remains unclear because the corresponding kinase for the subsequent conversion of DHA to DHAP is not yet known [43]. The repression of *gldA1* might favour glycerol phosphorylation by reducing the flow of glycerol to dihydroxyacetone (DHA). Besides the three affected genes that were common between NRC-1 and R1, there were distinct targets of Lrp in strain R1. For example, activation of *korAB*, encoding the oxoglutarate oxidoreductase complex, a TCA cycle enzyme (Fig. 7; Table 3). KorAB belongs to the family of two oxoacid:ferredoxin oxidoreductases (OR) and catalyzes the oxidative decarboxylation of oxoglutarate and is part of the following conversion together with CoA to succinyl-CoA. For *S. solfataricus* Ss-LrpB, activation of the pyruvate ferredoxin oxidoreductases *por*-operon has been reported by Peeters; 2009 [24]. The OR-enzymes act on various substrates that play key roles in amino acid metabolism [44].

In *H. salinarum* R1, *korAB* induction by Lrp suggests that KorAB catalyzes the rate-determining step of the TCA-cycle. This might influence the oxoglutarate/glutamate balance and shift carbon flow towards glutamate synthesis or degradation. In the Lrp-overexpression strain, a slight induction was observed for the glutamate dehydrogenase gene, *gdhA2*. Glutamate is incorporated into the TCA-cycle by GdhA2 and metabolized by KorAB to generate further metabolites or provide reducing equivalents. As already mentioned, Lrp regulates the synthesis of glutamine from glutamate by induction of *glnA*. In *H. salinarum*, glutamate is accumulated as a carbon storage compound and as a compatible osmolyte, and reaches concentrations of 50-100 mM [45,46]. If needed, glutamate can be converted into other metabolites, e.g. amino acids.

Both regulators, LrpA1 and Lrp, influence the expression of *tfb*'s. It has been proposed earlier that different combinations of TFs and TBP's may act in an analogous way to bacterial sigma factors in order to control global gene expression in *H. salinarum* NRC-1 [46-49]. Lrp activates *tfbF*, whereas LrpA1 represses *tfbB*. In strain NRC-1, TfbF is thought to control either directly or indirectly the transcription of target genes [41].

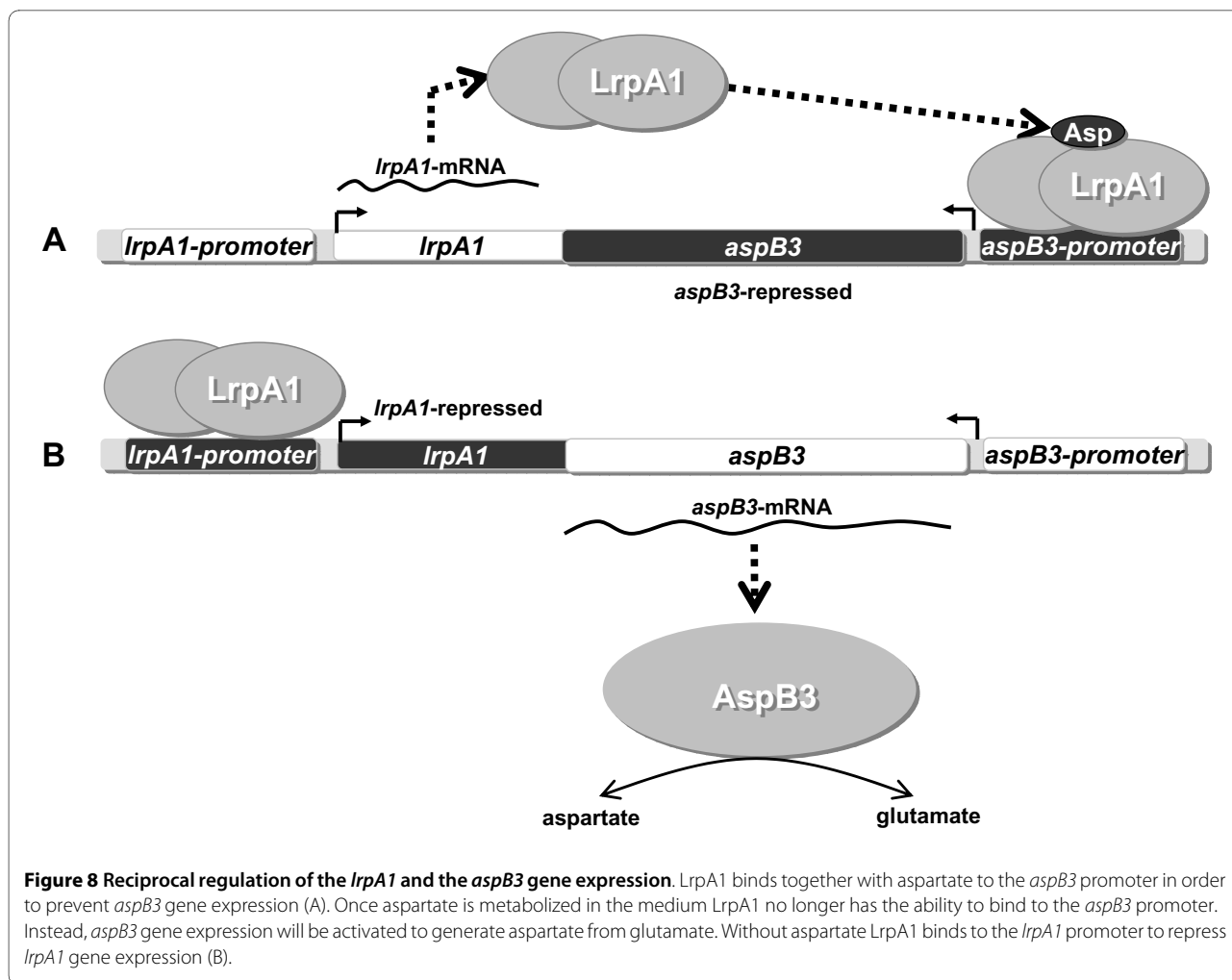


Figure 8 Reciprocal regulation of the *lrpA1* and the *aspB3* gene expression. LrpA1 binds together with aspartate to the *aspB3* promoter in order to prevent *aspB3* gene expression (A). Once aspartate is metabolized in the medium LrpA1 no longer has the ability to bind to the *aspB3* promoter. Instead, *aspB3* gene expression will be activated to generate aspartate from glutamate. Without aspartate LrpA1 binds to the *lrpA1* promoter to repress *lrpA1* gene expression (B).

The transcriptional regulator *sirR*, a homologue of the staphylococcal iron regulator repressor, was found to be induced by Lrp (Fig. 7; Table 3) [39]. SirR is described as a repressor of a putative Mn-dependent ABC-transporter in *H. salinarum* NRC-1 [50]. In R1, induction of the putative Mn-dependent ABC-transport operon (OE5144R, OE5146R, OE5147R) in a Δ *sirR* deletion strain was shown (Schwaiger, unpublished data). In the current study slight repression of the ABC-transporter gene, OE5147R was detected in the Lrp-overexpression strain, where *sirR* is induced. This is consistent with SirR acting as a repressor of the ABC-transport operon. The data also showed induction of *pstC2* and *phnC*, which belong to phosphate and phosphonate transport operons (Fig. 7; Table 3). In NRC-1, SirR is thought to take part in the regulation of phosphate transport processes [50]. Lrp might then indirectly influence phosphate metabolism by controlling *sirR* expression.

Conclusion

In summary, these studies on Lrp-like homologues in the halophilic branch of archaea have clearly demonstrated that they share a similar general function to their homologues in bacteria, i.e. they are transcriptional regulators that may have narrow or global regulatory actions. Lrp activates the gene expression of the glutamine synthetase gene *glnA*, influences peptide- and phosphate transport, as well as the central intermediary metabolism, and activates the expression of the transcriptional regulator *sirR*. By the control of *sirR* gene expression through Lrp correlation between amino acid metabolism and metal dependent processes could be demonstrated. In contrast to Lrp, LrpA1 regulates gene expression of fewer genes, amongst them the aspartate transaminase gene *aspB3*. LrpA1 was shown to bind to the *lrpA1* promoter region, as well as an aspartate dependent binding to the *aspB3* promoter region. To gain more insights into the LrpA1 and L-aspartate dependent *aspB3* gene expression, northern

blot analysis were performed, that showed an induction of the *aspB3* transcription in the absence of L- aspartate. This occurs either in a medium lacking aspartate or after aspartate is metabolized in the stationary phase. At the same time, an induction of the *lrpA1* gene expression was observed. This can be illustrated in a model that postulates a reciprocal regulation of the *lrpA1* and *aspB3* gene expression. Much remains to be understood, but the current work provides a solid foundation for further investigations of the haloarchaeal Lrp protein family and their regulatory networks.

Methods

Strains and growth conditions

H. salinarum R1 (DSM 671) and the deletion strains (Δlrp , $\Delta lrpA1$) were grown in either complex or synthetic medium, as described previously [51,52]. The *E. coli* strains DH5 α and BL21(DE3), used for cloning and protein expression, were grown in Luria-Bertani (LB) medium, supplemented with antibiotics when necessary [53].

Construction of deletion and overexpression mutants in *H. salinarum*

The construction of *lrpA1* and *lrp* deletion mutants was performed according to [54]. Briefly, oligonucleotides were used to amplify the adjacent region downstream and upstream of the gene of interest (additional file 10). The obtained PCR-products were digested with *Pst*I, fused by ligation, reamplified and cloned into pMKK100 [54] using *Bam*HI and *Xba*I restriction sites. The *lrp* and *lrpA1* strains were constructed by insertion of pKF203 and pKF204 plasmids into the *lrp* and *lrpA1* region of *H. salinarum*, respectively. The plasmids were constructed as described in additional file 11. Deletion plasmids and overexpression plasmids were introduced into *H. salinarum* by the PEG-mediated method according to [50]. Deletion mutants were generated by a two-step procedure of selecting separate single cross over events using red-blue screening as described by [54]. The correct genotype was verified by PCR and Southern blot hybridization (additional file 3). The presence of the overexpression plasmid in each transformant was determined by PCR followed by sequencing of the amplified fragments.

Isolation of total RNA

H. salinarum cells were harvested at an OD₆₀₀ of 0.2-0.8 by centrifugation for 5 min at 12000 g (4°C). The pellet was resuspended in peqGold RNAPure extraction solution (Peqlab

Biotechnology, Erlangen) and total RNA was extracted following the manufacturer's instructions. Finally, the

RNA was dissolved in DEPC (diethylpyrocarbonate)-H₂O and stored at -80°C until further use. After incubation with DNase (Promega-Kit RQ1) a DNA-free RNA sample was obtained. To confirm the absence of remaining DNA in the DNase digested RNA samples, a PCR-reaction was performed using HotStarTaq (Qiagen, Hilden) and selected gene specific oligonucleotide primers (see additional file 10 probes for southern blotting primers *lrp*). Only RNA, which did not yield any product after amplification (40 cycles) was used in subsequent RT-PCR's. RNA integrity was proven by using the 2100 Bioanalyzer (Agilent Technologies, Waldbronn) or alternatively with denaturing 1% TBE-agarose-gels containing 20 mM guanidinium thiocyanate.

Microarray analysis

Wild type R1 and the deletion strains (Δlrp , $\Delta lrpA1$) utilized for the microarray approach were grown in complex medium. Total RNA (5 μ g), isolated from cells having an OD₆₀₀ of 0.4 (4×10^8 cells/ml), was reverse transcribed into Cy3/Cy5-labeled cDNA using CyScribe First-Strand cDNA Synthesis Kit with enclosed random nonamer primers and Cy3-/Cy5-dUTP (both Amersham Biosciences, Freiburg). Labelled cDNA was hybridized to in-house fabricated whole genome DNA-microarrays [55] at 64°C overnight. To determine the fluorescence ratios the slides were scanned (GenePix 4000 B, Axon Instruments) and the data were extracted using the GenePix Pro 6 software. After background subtraction, pin-wise normalization and data evaluation by a Student's T-test, those transcripts displaying a p-value equal or lower than $5 \cdot 10^{-5}$ and a ratio of +/- 1.3 were selected as significantly regulated. A detailed description of the microarray design, experimental procedure and data-evaluation is described in [55]. We considered ratios with a p-value equal or lower than 5×10^{-5} as significant. This reflects a stringent interpretation of data as a two times less stringent p-value results in 4.8% false positives [56]. The data obtained from the microarray experiment were deposited at <http://www.ebi.ac.uk/miamexpress> under the accession number (E-MEXP-1447).

Reverse transcription-quantitative PCR and RACE

5 μ g DNA-free total RNA was reverse transcribed using 0.5 μ g random hexamer primers (Promega, Mannheim) and Superscript III reverse transcriptase (Invitrogen, Karlsruhe) according to the manufacturer's instructions. 1 μ l of the cDNA reaction mixture was quantified by using the SYBR Green PCR Master Mix Kit (Applied Biosystems, Darmstadt) in a GeneAmp 5700 Sequence Detection System (Applied Biosystems, Darmstadt) in a final reaction volume of 25 μ l. The primer pairs (additional file 10) for amplification were designed with

Primer Express 2.0 (Applied Biosystems, Darmstadt) and were added to a final concentration of 0.2 μ M. The data were analyzed via the $2^{\Delta\Delta C_t}$ -method using the mean- C_t -value of 3 replicate reactions per primer pair. The constitutively expressed gene OE4759F, encoding a S-layer glycoprotein, was chosen as internal standard. RACE (rapid amplification of cDNA ends) was essentially performed by an RNA circularization mediated method according to [34] to determine the 5'-ends and the 3'-ends of transcripts.

Northern blot hybridizations

15 μ g total RNA was separated by electrophoresis on 1% TBE-agarose-gel, containing 20 mM guanidinium thiocyanate. Gels were then equilibrated in alkaline buffer [57] and transferred onto Hybond N⁺ membrane (GE-Healthcare, München), by vacuum blotting for 3 hours. For generation of DIG-dUTP-labelled RNA-probes a PCR amplified DNA-fragment (additional file 10), including the T7-promoter sequence was generated in order to function as a template for *in vitro* transcription with T7-RNA-polymerase (DIG RNA labelling kit (SP6/T7), Roche Applied Science, Mannheim). Furthermore, hybridization and chemiluminiscent detection were carried out using the "DIG Wash and Block Buffer Set" (Roche Applied Science, Mannheim) according to "DIG system user's guide for filter hybridization" (Boehringer, Mannheim). All oligonucleotides used for generating the probes are mentioned in additional file 10.

Expression and purification of LrpA1

LrpA1 was amplified by PCR using oligonucleotides (additional file 10) including the sequence for the restriction sites of *NdeI* and *XhoI*. After digestion with these enzymes the PCR fragment was cloned into the vector pET26b (Novagen, Darmstadt). The obtained LrpA1-expression vector was transformed into *E. coli* BL21(DE3). The expressed polypeptide contained a C-terminal His₆-tag. A single colony was picked in order to inoculate 30 ml Luria-Bertani (LB) medium supplemented with 50 μ g/ml kanamycin. The culture was grown overnight in a rotary shaker at 37°C. On the next day the culture was used to inoculate 1 liter of the identical medium also supplemented with 50 μ g/ml kanamycin. Protein expression was induced with 0.6 mM isopropyl- β -D-thiogalactopyranoside (IPTG) at an OD₆₀₀ of 0.8. The cells were harvested after 3 hours of growth by centrifugation for 10 min at 5000 g (4°C). The pellet was resuspended in 30 ml buffer A (8 M urea; 100 mM NH₂PO₄; 10 mM Tris-HCl, pH 8.0) with 10 mM imidazole and disrupted by sonification (3 \times 15 sec; 50% duty cycle; Branson Sonifier). The lysate was centrifuged for

80 min at 50000 g. Subsequently, 1.5 ml of Ni-NTA fast flow matrix (Qiagen, Hilden) was added to the supernatant and was incubated on a rotary wheel for 2 h (4°C). Afterwards the Ni-NTA matrix was packed on a column, washed three times with 7.5 ml of buffer A plus 20 mM imidazole and eluted in three times 1.5 ml fractions with buffer A plus 150 mM imidazole. To restore the native conditions the purified LrpA1-His₆ was dialyzed against cell-free extract (CFE) buffer (3 M KCl; 1 M NaCl; 10 mM HEPES, pH 7.1) over night at room temperature. To prove successful refolding we performed CD spectroscopy (method see below). For the determination of multimerisation, we performed size exclusion chromatography by using a 3.2/3 Superdex 200 column (GE-Healthcare, München) on a SMART chromatography device (GE-Healthcare, München) (flow-rate 50 μ l per min CFE buffer). Presence of protein was detected at 280 nm.

Circular dichroism spectroscopy

To determine the secondary structures of LrpA1 after renaturation (see Expression and purification of LrpA1 (Methods)) we used circular dichroism in the far-UV (190-250 nm). CD-Spectra were monitored using a JASCO-J-810 spectrometer. After renaturation against the high salt CFE buffer (3 M KCl; 1 M NaCl; 5 mM MgCl₂; 10 mM HEPES, pH 7.1) LrpA1 had a final protein concentration of 1.2 mg/ml and was measured in 0.01 mm quartz cuvettes (Helma). All measurements were performed in CFE buffer at 21°C. The spectra were calculated from the average of 12 scans and repeated in two independent measurements, followed by the subtraction of spectra measured only with CFE buffer. Percentages of secondary structure were determined with the CDNN-program [58]. For secondary structure prediction we used the program "Scratch Protein Predictor"(ExPASy).

Protein-DNA-binding assay for halophilic proteins

Analytical DNA-affinity chromatography was performed by a modification of the method described by [59]. For each experiment, 150 μ l of streptavidin sepharose high performance (GE-Healthcare, München) suspension was spun down at 340 g in a column (MoBiTec M1002S, Göttingen) to remove ethanol. After five consecutive washing steps (500 μ l of binding buffer: 0.15 M NaCl; 20 mM Na₂PO₄, pH 7.5) streptavidin sepharose was incubated with biotin-labelled DNA probes (61 pmol) for 2 h at room temperature with gentle shaking. Biotinylated DNA was prepared by PCR using biotin-labelled primers (Metabion, Martinsried) for amplification of the *lrpA1* and the aspartate transaminase (*aspB3*) promoter, as well as a fragment of the *flgB1* gene as negative-control. For binding of LrpA1 to the *aspB3* promoter, reactions were per-

formed in CFE buffer (3 M KCl; 1 M NaCl; 5 mM MgCl₂; 10 mM HEPES, pH 7.1) in the presence of either 5 mM L-aspartate or 5 mM L-arginine. Columns were washed three times with CFE buffer. Unbound DNA was monitored spectrophotometrically. Protein-DNA-binding reactions were carried out by incubation of LrpA1 with the DNA-affinity matrix at room temperature for 4 h with shaking. We applied a stoichiometric excess of protein (2 nmol) relative to the molar amount of DNA (61 pmol). The mixture was then transferred to a column, centrifuged and washed twice with 200 µl CFE. LrpA1 was eluted from the DNA-Sepharose with 100 µl of 1% SDS and analyzed by SDS-PAGE (NuPAGE[®]Pre-Cast Gel System, Invitrogen) with subsequent silver staining. We performed three independent binding experiments. From these data we quantified band intensities in each single gel using densitometry (Total Lab Version 1.11). Both, monomeric as well as dimeric bands account for the depicted final values. The band with the highest intensity in each gel represents 100% (see Fig 4A lane 2, Fig 4B lane 3, Fig 4C lane 3). The two other bands with weaker binding intensity were calculated in relation to 100% highest intensity. Oligonucleotides used for the amplification of the DNA fragments are mentioned in additional file 10.

Additional material

Additional file 1 Structure-based sequence alignment of the *H. salinarum* LrpA1 (OE2621R) with other archaeal and bacterial Lrp-homologues. The percentages in parenthesis represent a sequence comparison between LrpA1 and the aligned sequences. The alignment includes *P. furiosus* LrpA (PF1601; 38%), *M. jannaschii* Ptr2 (MJ0723; 30%), *H. walsbyi* Lrp-like protein (HQ3354A; 76%), *H. salinarum* Lrp (OE3923F; 25%), *S. solfataricus* LysM (SSO0157; 21%), *B. subtilis* LrpC (BSU04250; 24%), *E. coli* AsnC (APECO1_2720; 26%), and *E. coli* Lrp (b0889; 23%). The HTH DNA-binding motif (αB-αC) and the RAM-domain (β2αDβ3β4αEβ5) are boxed, including the asparagine binding site of *E. coli* AsnC. Amino acids are shaded in grey according to sequence conservation. Conserved methionine/prolines of the LrpA1-subgroup are shaded in blue. LrpA1 shares highest sequence identity (76%) with the Lrp-like regulator (HQ3354A) from *Haloquadratum walsbyi*. A comparison between LrpA1 and other Lrp-homologues revealed 38% identity with LrpA (PF1601) from *P. furiosus*, 30% identity with Ptr2 (MJ0723) from *M. jannaschii*, 21% identity with *S. solfataricus* LysM (SSO0157) and 24% identity with LrpC (BSU04250) from *Bacillus subtilis*. *E. coli* Lrp (b0889) showed 23% and *E. coli* AsnC (APECO1_2720) 26% identity. Secondary structure elements are indicated as red α-helices and green β-strands. In both *H. salinarum* Lrp proteins the N-terminal helix-turn-helix (HTH) motif and the C-terminal regulation of amino acid metabolism (RAM)-domain were identified based on the structure of crystallized Lrp/AsnC homologues. The figure was made by using the INDONESIA alignment package (D. Madsen, P. Johansson and G.J. Kleywegt manuscript in preparation).

Additional file 2 Growth curves of Δ Lrp, Δ LrpA1, Lrp and LrpA1.

Growth curves of the deletion strains Δ Lrp and Δ LrpA1 as well as the overexpressing strains Lrp and LrpA1 were compared to the wild type strain R1. All strains were grown in complex medium. Growth occurred aerobic in the dark for the deletion strains (A) and anaerobic in the light for the overexpression strains (B). The optical density of the cultures was determined at OD₆₀₀.

Additional file 3 Southern blot analysis to verify the correct genotype of the deletion mutants (Δ LrpA1 Δ Lrp).

In a first approach deletion strains were pre-selected by PCR (oligonucleotides see additional file 10; probes for southern blotting). We used two primer pairs, one, which amplifies the entire gene to be deleted (only in wild type, not in the mutant) and another, which anneals to flanking regions up- and downstream of that ORF. Typically a mutant strain does not yield the first, but the second product of the size: (wild type amplicon-gene length). As a positive control we have used chromosomal DNA of wild type cells. To ensure that the deleted gene has not been relocated by chromosomal rearrangements we subsequently confirmed the mutant genotype by southern blotting. Genomic DNA from the PCR-positive clones as well as wild type DNA was cut with the restriction enzyme *Bgl*I. Southern blot hybridization was performed using two different types of digoxigenin labelled probes generated by PCR. (see additional file 10: flanking probe (Δ LrpA1, Δ Lrp) and gene probe (LrpA1, Lrp)). Samples were separated by denaturing agarose gel electrophoresis (1%), and vacuum blotted onto a nylon membrane. Hybridization and detection were performed with "DIG Easy Hyb" (Roche Diagnostics) according to the manufacturer's instructions. The obtained fragments are marked by an arrow (A1, 2 and B1, 2) and explained in additional table S1. Figure A shows the southern blot for the PCR-positive deletion strains Δ LrpA1. PCR-positive clones (lane 1-9), wild type DNA (lane 11) and a Dig-labelled DNA-standard (lane 12). Using two different types of probes (flanking probe A1 and gene probe A2) fragments obtained from southern blot are marked by an arrow and described in additional table S1. PCR-positive deletion strains Δ Lrp (lane 1-3), wild type DNA (4, 5) and a Dig-labelled DNA-standard (lane 7) were loaded to a 1% agarose gel (B). The resulted fragments after using the flanking probe (B1) and the gene probe (B2) are marked by an arrow and corresponding sizes are shown in additional table S1.

Additional file 4 Differentially expressed genes in Δ LrpA1. All significantly differentially expressed genes in Δ LrpA1 having a ratio higher than +/-1.7 and those between +/-1.7 and +/-1.3 are depicted in this table. The regulated genes are sorted by their Identification number (ID).

Additional file 5 RT-qPCR data compared to microarray data in Δ LrpA1 compared against wild type R1.

Additional table S2 shows a comparison of RT-qPCR data with the microarray data. Total RNA was isolated from the deletion mutant Δ LrpA1 and wild type at a cell density OD₆₀₀ 0.4. We determined the transcript amount of the genes *aspB3* and OE6130F, which encodes for a conserved hypothetical protein.

Additional file 6 Expression, oligomerization and folding of LrpA1.

Heterologous expression of the His₆-tagged *H. salinarum* LrpA1 in *E. coli* BL21 (DE3) and protein purification analyzed by SDS-PAGE. *E. coli* extracts before induction (lane 1), two and three hours after induction with 0.6 mM IPTG (lane 2, 3) and purified protein, displayed by an arrow (lane 4-6) (A). After dialysis against a high salt buffer correct folding of LrpA1 was proved by CD-spectroscopy, were 56% α-helices, 11% β-sheet, 14% β-turn and 24% random coil structure was determined (B). The theoretical calculated values for LrpA1 are 42% α-helices, 27% β-sheet and 31% random coil structure was determined. Folded LrpA1 in high salt has a predominant α-helical structure. An aberrance of ~10% between the measured and the theoretical value is in the range of error and has been shown in previous studies [60] (B). The size exclusion chromatography elution profile showed dimerization of LrpA1 after renaturation (C). Calibration standards used for this run are indicated in additional table S2 (C). LrpA1 elutes at a volume of 1.32 ml which is a corresponding molecular weight 31.1 kDa showing a LrpA1 dimer. The theoretical size of a LrpA1 monomer is 15.2 kDa.

Additional file 7 Sequence comparison of the three *H. salinarum*

aspartate transaminases. AspB1, AspB2 and AspB3 were compared with aspartate transaminases subgroup Ia (having a conserved R at the position marked by an □) and aspartate transaminases Ib (having an conserved K at the position marked by an x).

Additional file 8 Western blot analysis to detect the overexpression of *lrp* on protein level. Transcription of the *lrp* gene was under the control of the bacteriorhodopsin (*bop*) promoter resulting in the KF203 (*lrp*) mutant. The *bop* promoter is maximally induced under light exposure and anaerobic conditions. Therefore wild type cells and cells from the Lrp-overexpression strain were grown anaerobically under light exposure and harvested at an OD₆₀₀ of 0.8. For detection of the Lrp protein we used an antibody against Lrp. Proteins from strains as indicated in the figure were separated on a gradient gel (4-12%), blotted on a nitrocellulose membrane and finally subjected to an immune detection reaction with an antibody against Lrp. Low expression was observed for the wild type (lane 1), whereas significant overexpression was detected in the Lrp-overexpression strain (lane 2). Furthermore we tested the Δ *lrp* deletion mutant, grown aerobically in the dark. Using an antibody against Lrp (lane 3) no signal could be obtained, as expected.

Additional file 9 Differentially expressed genes in Δ *lrp*. All significantly differentially expressed genes in Δ *lrp* having a ratio higher than +/-1.7 and those between +/-1.7 and +/-1.3 are depicted in this table. The regulated genes are sorted by their Identification number (ID).

Additional file 10 A table of oligonucleotides. Oligonucleotides used in these experiments

Additional file 11 Scheme of integration of pKF204 into the genome of *H. salinarum* resulting in KF204 (*lrpA1*) mutant. The plasmid pKF204 contains a portion of the 5' end of the *lrpA1* gene. The *bop* promoter P_{bop} (violet box) was inserted upstream of the truncated *lrpA1* gene (black arrow). The plasmid contains a selection marker (Mev^R). After integration of pKF204 into the *H. salinarum* genome, only the *lrpA1* gene downstream the *bop* promoter is functionally transcribed, while transcription product under the native promoter is truncated and presumably not functional. The KF203 (*lrp*) mutant was constructed similarly using plasmid pKF203.

Authors' contributions

RS performed most of the experiments described in this article (microarray experiments, determination of the transcriptional start sites and 3'UTR, Northern hybridizations, DNA-binding assays) and wrote the manuscript with support of DO as the supervisor of this study. CS constructed the deletion mutants (Δ *lrpA1*, Δ *lrp*) and KF the overexpression strains (*lrpA1*, *lrp*). VT developed the halophilic DNA-binding assay and AW participated in establishing the Microarray technique for *H. salinarum* R1 in our department. All authors carefully read the manuscript.

Acknowledgements

We thank Mike Dyal-Smith, Martin Grininger and Friedhelm Pfeiffer for carefully reading the manuscript and for discussions. We also thank Patrik Johansson for making the structure alignment.

Author Details

¹Max Planck Institute of Biochemistry, Department of Membrane Biochemistry, Am Klopferspitz 18, 82152 Martinsried, Germany, ²School of Life Sciences, Arizona State University, Tempe, Arizona 85287, USA and ³QIAGEN GmbH, Qiagen Strasse 1, 40724 Hilden, Germany

Received: 21 January 2010 Accepted: 28 May 2010

Published: 28 May 2010

References

1. Langer D, Hain J, Thuriaux P, Zillig W: Transcription in archaea: similarity to that in eucarya. *Proc Natl Acad Sci USA* 1995, **92**(13):5768-5772.
2. Thomm M: Archaeal transcription factors and their role in transcription initiation. *FEMS Microbiol Rev* 1996, **18**(2-3):159-171.
3. Soppa J: Transcription initiation in Archaea: facts, factors and future aspects. *Mol Microbiol* 1999, **31**(5):1295-1305.
4. Bell SD, Magill CP, Jackson SP: Basal and regulated transcription in Archaea. *Biochem Soc Trans* 2001, **29**(Pt 4):392-395.
5. Reeve JN, Sandman K, Daniels CJ: Archaeal histones, nucleosomes, and transcription initiation. *Cell* 1997, **89**(7):999-1002.
6. Kruger K, Hermann T, Armbruster V, Pfeifer F: The transcriptional activator GvpE for the halobacterial gas vesicle genes resembles a basic region leucine zipper regulatory protein. *J Mol Biol* 1998, **279**(4):761-771.

7. Calvo JM, Matthews RG: The leucine-responsive regulatory protein, a global regulator of metabolism in *Escherichia coli*. *Microbiol Rev* 1994, **58**(3):466-490.
8. Newman EB, Lin R: Leucine-responsive regulatory protein: a global regulator of gene expression in *E. coli*. *Annu Rev Microbiol* 1995, **49**:747-775.
9. Tani TH, Khodursky A, Blumenthal RM, Brown PO, Matthews RG: Adaptation to famine: a family of stationary-phase genes revealed by microarray analysis. *Proc Natl Acad Sci USA* 2002, **99**(21):13471-13476.
10. Wang Q, Wu J, Friedberg D, Plakto J, Calvo JM: Regulation of the *Escherichia coli lrp* gene. *J Bacteriol* 1994, **176**(7):1831-1839.
11. Brinkman AB, Ettema TJ, de Vos WM, Oost J van der: The Lrp family of transcriptional regulators. *Mol Microbiol* 2003, **48**(2):287-294.
12. Ouhammouch M, Geiduschek EP: A thermostable platform for transcriptional regulation: the DNA-binding properties of two Lrp homologs from the hyperthermophilic archaeon *Methanococcus jannaschii*. *EMBO Journal* 2001, **20**(1-2):146-156.
13. Ouhammouch M, Dewhurst RE, Hausner W, Thomm M, Geiduschek EP: Activation of archaeal transcription by recruitment of the TATA-binding protein. *Proc Natl Acad Sci USA* 2003, **100**(9):5097-5102.
14. Bult CJ, White O, Olsen GJ, Zhou L, Fleischmann RD, Sutton GG, Blake JA, FitzGerald LM, Clayton RA, Gocayne JD, et al.: Complete genome sequence of the methanogenic archaeon, *Methanococcus jannaschii*. *Science* 1996, **273**(5278):1058-1073.
15. Charlier D, Roovers M, Thia-Toong TL, Durbecq V, Glansdorff N: Cloning and identification of the *Sulfolobus solfataricus* Lrp gene encoding an archaeal homologue of the eubacterial leucine-responsive global transcriptional regulator Lrp. *Gene* 1997, **201**(1-2):63-68.
16. Peeters E, Wartel C, Maes D, Charlier D: Analysis of the DNA-binding sequence specificity of the archaeal transcriptional regulator Ss-LrpB from *Sulfolobus solfataricus* by systematic mutagenesis and high resolution contact probing. *Nucleic Acids Res* 2007, **35**(2):623-633.
17. Bell SD, Jackson SP: The role of transcription factor B in transcription initiation and promoter clearance in the archaeon *Sulfolobus acidocaldarius*. *J Biol Chem* 2000, **275**(17):12934-12940.
18. Kyrpides NC, Olsen GJ, Klenk HP, White O, Woese CR: *Methanococcus jannaschii* genome: revisited. *Microb Comp Genomics* 1996, **1**(4):329-338.
19. Brinkman AB, Dahlke I, Tuininga JE, Lammers T, Dumay V, de Heus E, Lebbink JH, Thomm M, de Vos WM, Oost J van Der: An Lrp-like transcriptional regulator from the archaeon *Pyrococcus furiosus* is negatively autoregulated. *J Biol Chem* 2000, **275**(49):38160-38169.
20. Napoli A, Oost J van der, Sensen CW, Charlebois RL, Rossi M, Ciaramella M: An Lrp-like protein of the hyperthermophilic archaeon *Sulfolobus solfataricus* which binds to its own promoter. *J Bacteriol* 1999, **181**(5):1474-1480.
21. Bell SD, Jackson SP: Mechanism of autoregulation by an archaeal transcriptional repressor. *J Biol Chem* 2000, **275**(41):31624-31629.
22. Enoru-Eta J, Gigot D, Glansdorff N, Charlier D: High resolution contact probing of the Lrp-like DNA-binding protein Ss-Lrp from the hyperthermoacidophilic cyanarchaeote *Sulfolobus solfataricus* P2. *Mol Microbiol* 2002, **45**(6):1541-1555.
23. Peeters E, Willaert R, Maes D, Charlier D: Ss-LrpB from *Sulfolobus solfataricus* condenses about 100 base pairs of its own operator DNA into globular nucleoprotein complexes. *J Biol Chem* 2006, **281**(17):11721-11728.
24. Peeters E, Albers SV, Vassart A, Driessen AJ, Charlier D: Ss-LrpB, a transcriptional regulator from *Sulfolobus solfataricus*, regulates a gene cluster with a pyruvate ferredoxin oxidoreductase-encoding operon and permease genes. *Mol Microbiol* 2009, **71**(4):972-988.
25. Brinkman AB, Bell SD, Lebbink RJ, de Vos WM, Oost J van der: The *Sulfolobus solfataricus* Lrp-like protein LysM regulates lysine biosynthesis in response to lysine availability. *J Biol Chem* 2002, **277**(33):29537-29549.
26. Enoru-Eta J, Gigot D, Thia-Toong TL, Glansdorff N, Charlier D: Purification and characterization of Sa-Lrp, a DNA-binding protein from the extreme thermoacidophilic archaeon *Sulfolobus acidocaldarius* homologous to the bacterial global transcriptional regulator Lrp. *J Bacteriol* 2000, **182**(13):3661-3672.
27. Wang Q, Sacco M, Ricca E, Lago CT, De Felice M, Calvo JM: Organization of Lrp-binding sites upstream of *ilvIH* in *Salmonella typhimurium*. *Mol Microbiol* 1993, **7**(6):883-891.

28. Dahlke I, Thomm M: **A *Pyrococcus* homolog of the leucine-responsive regulatory protein, LrpA, inhibits transcription by abrogating RNA polymerase recruitment.** *Nucleic Acids Res* 2002, **30**(3):701-710.
29. Kawashima T, Aramaki H, Oyamada T, Makino K, Yamada M, Okamura H, Yokoyama K, Ishijima SA, Suzuki M: **Transcription regulation by feast/famine regulatory proteins, FFRPs, in archaea and eubacteria.** *Biol Pharm Bull* 2008, **31**(2):173-186.
30. Platko JV, Calvo JM: **Mutations affecting the ability of *Escherichia coli* Lrp to bind DNA, activate transcription, or respond to leucine.** *J Bacteriol* 1993, **175**(4):1110-1117.
31. Chen S, Rosner MH, Calvo JM: **Leucine-regulated self-association of leucine-responsive regulatory protein (Lrp) from *Escherichia coli*.** *J Mol Biol* 2001, **312**(4):625-635.
32. Leonard PM, Smits SH, Sedelnikova SE, Brinkman AB, de Vos WM, Oost J van der, Rice DW, Rafferty JB: **Crystal structure of the Lrp-like transcriptional regulator from the archaeon *Pyrococcus furiosus*.** *Embo J* 2001, **20**(5):990-997.
33. Ettema TJ, Brinkman AB, Tani TH, Rafferty JB, Oost J Van Der: **A novel ligand-binding domain involved in regulation of amino acid metabolism in prokaryotes.** *J Biol Chem* 2002, **277**(40):37464-37468.
34. Brenneis M, Hering O, Lange C, Soppa J: **Experimental Characterization of Cis-Acting Elements Important for Translation and Transcription in Halophilic Archaea.** *PLoS Genet* 2007, **3**(12):e229.
35. Geiduschek EP, Ouhammouch M: **Archaeal transcription and its regulators.** *Mol Microbiol* 2005, **56**(6):1397-1407.
36. Okamoto A, Kato R, Masui R, Yamagishi A, Oshima T, Kuramitsu S: **An aspartate aminotransferase from an extremely thermophilic bacterium, *Thermus thermophilus* HB8.** *J Biochem* 1996, **119**(1):135-144.
37. Nakai T, Okada K, Akutsu S, Miyahara I, Kawaguchi S, Kato R, Kuramitsu S, Hirotsu K: **Structure of *Thermus thermophilus* HB8 aspartate aminotransferase and its complex with maleate.** *Biochemistry* 1999, **38**(8):2413-2424.
38. Gonzalez O, Gronau S, Falb M, Pfeiffer F, Mendoza E, Zimmer R, Oesterhelt D: **Reconstruction, Modeling & Analysis of *Halobacterium salinarum* R-1 metabolism.** *Molecular Biosystems* 2007, **3**:1-13.
39. Hill PJ, Cockayne A, Landers P, Morrissey JA, Sims CM, Williams P: **SirR, a novel iron-dependent repressor in *Staphylococcus epidermidis*.** *Infect Immun* 1998, **66**(9):4123-4129.
40. Pfeiffer F, Schuster SC, Broicher A, Falb M, Palm P, Rodewald K, Ruepp A, Soppa J, Tittor J, Oesterhelt D: **Evolution in the laboratory: The genome of *Halobacterium salinarum* strain R1 compared to that of strain NRC-1.** *Genomics* 2008, **91**(4):335-346. Newman EB, Lin R: **Leucine-responsive regulatory protein: a global regulator of gene expression in *E. coli*.** *Annu Rev Microbiol* 1995, **49**:747-775
41. Bonneau R, Facciotti MT, Reiss DJ, Schmid AK, Pan M, Kaur A, Thorsson V, Shannon P, Johnson MH, Bare JC, *et al.*: **A predictive model for transcriptional control of physiology in a free living cell.** *Cell* 2007, **131**(7):1354-1365.
42. Rawal N, Kelkar SM, Altekar W: **Alternative routes of carbohydrate metabolism in halophilic archaeobacteria.** *Indian J Biochem Biophys* 1988, **25**(6):674-686.
43. Falb M, Muller K, Konigsmaier L, Oberwinkler T, Horn P, von Gronau S, Gonzalez O, Pfeiffer F, Bornberg-Bauer E, Oesterhelt D: **Metabolism of halophilic archaea.** *Extremophiles* 2008, **12**(2):177-196.
44. Schut GJ, Menon AL, Adams MW: **2-keto acid oxidoreductases from *Pyrococcus furiosus* and *Thermococcus litoralis*.** *Methods Enzymol* 2001, **331**:144-158.
45. Desmarais D, Jablonski PE, Fedarko NS, Roberts MF: **2-Sulfotrehalose, a novel osmolyte in haloalkaliphilic archaea.** *J Bacteriol* 1997, **179**(10):3146-3153.
46. Kokoeva MV, Storch KF, Klein C, Oesterhelt D: **A novel mode of sensory transduction in archaea: binding protein-mediated chemotaxis towards osmoprotectants and amino acids.** *Embo J* 2002, **21**(10):2312-2322.
47. Baliga NS, Goo YA, Ng WV, Hood L, Daniels CJ, DasSarma S: **Is gene expression in *Halobacterium* NRC-1 regulated by multiple TBP and TFB transcription factors?** *Mol Microbiol* 2000, **36**(5):1184-1185.
48. Dennis PP, Shimmin LC: **Evolutionary divergence and salinity-mediated selection in halophilic archaea.** *Microbiol Mol Biol Rev* 1997, **61**(1):90-104.
49. Coker JA, DasSarma S: **Genetic and transcriptomic analysis of transcription factor genes in the model halophilic Archaeon: coordinate action of TbpD and TfbA.** *BMC Genet* 2007, **8**:61.
50. Kaur A, Pan M, Meislin M, Facciotti MT, El-Gewely R, Baliga NS: **A systems view of haloarchaeal strategies to withstand stress from transition metals.** *Genome Res* 2006, **16**(7):841-854.
51. Cline SW, Doolittle WF: **Efficient transfection of the archaeobacterium *Halobacterium halobium*.** *J Bacteriol* 1987, **169**(3):1341-1344.
52. Oesterhelt D, Krippahl G: **Phototrophic growth of halobacteria and its use for isolation of photosynthetically-deficient mutants.** *Ann Microbiol (Paris)* 1983, **134B**(1):137-150.
53. Sambrook J, Fritsch E, Maniatis T: **Molecular Cloning. A Laboratory Manual.** In *Cold Spring Harbor* 2nd edition. NY: Cold Spring Harbor Laboratory Press; 1989.
54. Koch MK, Oesterhelt D: **MpcT is the transducer for membrane potential changes in *Halobacterium salinarum*.** *Molecular Microbiology* 2005, **55**(6):1681-1694.
55. Twellmeyer J, Wende A, Wolfertz J, Pfeiffer F, Panhuysen M, Zaigler A, Soppa J, Welzl G, Oesterhelt D: **Microarray Analysis in the Archaeon *Halobacterium salinarum* Strain R1.** *PLoS ONE* 2007, **2**(10):e1064.
56. Hung SP, Baldi P, Hatfield GW: **Global gene expression profiling in *Escherichia coli* K12. The effects of leucine-responsive regulatory protein.** *J Biol Chem* 2002, **277**(43):40309-40323.
57. Chomczynski P, Mackey K: **One-hour downward capillary blotting of RNA at neutral pH.** *Analytical Biochemistry* 1994, **221**(2):303-305.
58. Bohm G, Muhr R, Jaenicke R: **Quantitative-Analysis of Protein Far Uv Circular-Dichroism Spectra by Neural Networks.** *Protein Eng* 1992, **5**(3):191-195.
59. Kumar NV, Bernstein LR: **A new analytical scale DNA affinity binding assay for analyses of specific protein-DNA interactions.** *Anal Biochem* 2001, **299**(2):203-210.
60. Eckhoff: **Kristallisation und NMR-spektroskopische Untersuchungen an dem Twisted Dwarf Protein aus *Arabidopsis thaliana*.** 2003.

doi: 10.1186/1471-2199-11-40

Cite this article as: Schwaiger *et al.*, Transcriptional control by two leucine-responsive regulatory proteins in *Halobacterium salinarum* R1 *BMC Molecular Biology* 2010, **11**:40

Submit your next manuscript to BioMed Central and take full advantage of:

- Convenient online submission
- Thorough peer review
- No space constraints or color figure charges
- Immediate publication on acceptance
- Inclusion in PubMed, CAS, Scopus and Google Scholar
- Research which is freely available for redistribution

Submit your manuscript at
www.biomedcentral.com/submit

