

## Adoptive transfer of IL-4R $\alpha$ + macrophages is sufficient to enhance eosinophilic inflammation in a mouse model of allergic lung inflammation

Ford *et al.*

RESEARCH ARTICLE

Open Access

# Adoptive transfer of IL-4R $\alpha$ <sup>+</sup> macrophages is sufficient to enhance eosinophilic inflammation in a mouse model of allergic lung inflammation

Andrew Q Ford<sup>1</sup>, Preeta Dasgupta<sup>1</sup>, Irina Mikhailenko<sup>1</sup>, Elizabeth MP Smith<sup>1</sup>, Nancy Noben-Trauth<sup>3</sup> and Achshah D Keegan<sup>1,2\*</sup>

## Abstract

**Background:** The IL-4 receptor  $\alpha$  (IL-4R $\alpha$ ) chain has a broad expression pattern and participates in IL-4 and IL-13 signaling, allowing it to influence several pathological components of allergic lung inflammation. We previously reported that IL-4R $\alpha$  expression on both bone marrow-derived and non-bone marrow-derived cells contributed to the severity of allergic lung inflammation. There was a correlation between the number of macrophages expressing the IL-4R $\alpha$ , CD11b, and IA<sup>d</sup>, and the degree of eosinophilia in ovalbumin challenged mice. The engagement of the IL-4R $\alpha$  by IL-4 or IL-13 is able to stimulate the alternative activation of macrophages (AAM). The presence of AAM has been correlated with inflammatory responses to parasites and allergens. Therefore, we hypothesized that IL-4R $\alpha$ <sup>+</sup> AAM play an active role in allergic lung inflammation. To directly determine the role of AAM in allergic lung inflammation, M-CSF-dependent macrophages (BMM) were prepared from the bone-marrow of IL-4R $\alpha$  positive and negative mice and transferred to IL-4R $\alpha$ xRAG2<sup>-/-</sup> mice. Wild type TH2 cells were provided exogenously.

**Results:** Mice receiving IL-4R $\alpha$ <sup>+/+</sup> BMM showed a marked increase in the recruitment of eosinophils to the lung after challenge with ovalbumin as compared to mice receiving IL-4R $\alpha$ <sup>-/-</sup> BMM. As expected, the eosinophilic inflammation was dependent on the presence of TH2 cells. Furthermore, we observed an increase in cells expressing F4/80 and Mac3, and the AAM marker YM1/2 in the lungs of mice receiving IL-4R $\alpha$ <sup>+/+</sup> BMM. The BAL fluid from these mice contained elevated levels of eotaxin-1, RANTES, and CCL2.

**Conclusions:** These results demonstrate that transfer of IL-4R $\alpha$ <sup>+</sup> macrophages is *sufficient* to enhance TH2-driven, allergic inflammation. They further show that stimulation of macrophages through IL-4R $\alpha$  leads to their alternative activation and *positive contribution* to the TH2-driven allergic inflammatory response in the lung. Since an increase in AAM and their products has been observed in patients with asthma exacerbations, these results suggest that AAM may be targeted to alleviate exacerbations.

## Background

Asthma is an inflammatory disease of the lung that has increased dramatically in western countries over the past 50 years [1-3]. Asthma is characterized by airway hyperresponsiveness (AHR), mucus hypersecretion, and airflow obstruction. Airways of asthmatics exhibit chronic inflammation with infiltration of the bronchial mucosa by lymphocytes, eosinophils, macrophages, and

mast cells in conjunction with epithelial desquamation, goblet cell hyperplasia, and submucosal thickening. A number of genetically modified mouse strains have been used to understand the development of allergic inflammation in response to the model allergen ovalbumin [4-12]. T-cell deficient mice fail to develop lung inflammation and AHR, while B-cell deficient mice (and therefore IgE deficient) and mast cell deficient mice still develop these responses [5]. The importance of TH2 cells in the development of asthma in this model has been well established [13]. Treatment of mice with anti-IL-4, anti-IL-4R $\alpha$  antibodies, or soluble IL-4R $\alpha$ , inhibits

\* Correspondence: akeegan@som.umaryland.edu

<sup>1</sup>Center for Vascular and Inflammatory Diseases, University of Maryland, Baltimore, 800 W. Baltimore St., Baltimore MD 21201, USA  
Full list of author information is available at the end of the article

the development of asthma [12,13]. As would be expected, IL-4R $\alpha$ <sup>-/-</sup> mice and STAT6<sup>-/-</sup> mice also have greatly reduced asthma like symptoms in response to allergen challenge [5-11].

In the previous studies, TH2 differentiation was impaired explaining the lack of allergic inflammation. However, several groups showed that IL-4R $\alpha$ <sup>-/-</sup> mice have greatly reduced asthma like symptoms, even when purified TH2 cells were provided exogenously [7,8]. In addition, activating the receptor by transgenic expression or direct administration of IL-4 or IL-13 into the lungs in the absence of lymphocytes elicited symptoms of asthma including eosinophilia, mucus production, and AHR [7,14,15]. These results suggested that IL-4R $\alpha$  on cells other than T cells are important in the development of asthma pathology. Using a bone-marrow chimera approach, we previously showed that the expression of the IL-4R $\alpha$  chain on both bone marrow-derived and non-bone marrow-derived cells contributes to disease progression [16]. While expression of the IL-4R $\alpha$  chain on either bone marrow- or non-bone marrow-derived cell types supported eosinophilic infiltration, expression of the IL-4R $\alpha$  on both cell types resulted in the most severe inflammation [16]. Phenotypic analysis showed a strong correlation between the severity of allergic lung inflammation and the presence of IL-4R $\alpha$ <sup>+</sup> macrophages [16].

In the presence of IL-4 or IL-13, IL-4R $\alpha$ <sup>+</sup> macrophages adopt an alternative phenotype; such macrophages are termed alternatively-activated macrophages (AAM) [17-28]. These cells do not express potent pro-inflammatory mediators like the LPS/IFN $\gamma$  treated classically activated macrophages (CAM). Rather, AAM express a different set of genes including *arg 1* (arginase I), *Relmla* (Relma/FIZZ1), and the chitinase family members *Chi3L3/4* (YM1/2), *Chi3L1* (brp39) and produce the chemokines CCL2, CCL11, and CCL24 [20-29]. Furthermore, these AAM can fuse to form multinucleated giant cells (MNG) that act to sequester and degrade foreign materials [30,31]. These cells are found during TH2 responses in vivo, and are thought to be important for immune responses to helminthic parasites and for tissue repair [24-28,32].

Several in vivo studies established a correlation between the presence of AAM and inflammation. Mice infected with *Schistosoma mansoni* developed granulomatous liver pathology that correlated with high arginase activity [33]. Furthermore, *Heligmosomoides polygyrus* infection of mice elicited a TH2 response and AAM accumulated at the site of inflammation [32]. The presence of AAM also correlated with recruitment of eosinophils to the lung and peritoneal cavity in mice infected with *Nippostrongylus brasiliensis* (Nb) or with Sendai virus [34,35]. A reduction in macrophage numbers resulted in reduced eosinophilia in both models. Several strategies to delete the IL-4R $\alpha$  simultaneously on monocytic and granulocytic cells also

suggested a role for AAM in mediating eosinophilic inflammation in parasite infection models [36]. A study characterizing the amplification of AAM formation by IL-33 also established a correlation between AAM and eosinophilia in a mouse model of allergic lung inflammation [37]. In addition, increases in AAM in the lungs of female mice have been linked to the increased susceptibility of female mice to asthma as compared to male mice [38,39]. Furthermore, studies in children undergoing severe asthma exacerbations demonstrated an increase in AAM in the lung [40-42].

These previous studies demonstrated a correlation between the severity of TH2-driven inflammation and the presence of IL-4R $\alpha$ <sup>+</sup> macrophages and AAM [16,32-42]. However, they did not determine whether AAM were sufficient to amplify the inflammatory response. Since human asthmatics have elevated numbers of AAM and have increased levels of chitinase proteins in their blood and lung lavage fluid [43-49], we hypothesized that AAM directly contribute to the severity of lung pathology. To directly test this hypothesis, we prepared MCSF-dependent macrophages from the bone-marrow (BMM) of IL-4R $\alpha$ <sup>+/+</sup> or IL-4R $\alpha$ <sup>-/-</sup> mice and transferred them to IL-4R $\alpha$ xRAG2<sup>-/-</sup> recipient mice. TH2 cells were provided exogenously. Strikingly, the adoptive transfer of IL-4R $\alpha$ <sup>+/+</sup> BMM was sufficient to enhance TH2-driven allergen-induced lung inflammation. These macrophages were detected in the lung tissue and were YM1/2- and Mac3-positive indicating the macrophages were differentiating to AAM in the TH2 environment. These results demonstrate that IL-4/IL-13 responsive macrophages positively contribute to the TH2-driven allergic inflammatory response in the lung and may serve as targets to reduce allergen-induced exacerbations.

## Methods

### Reagents

Recombinant murine IL-4 (mIL-4), recombinant human IL-2 (hIL-2), recombinant human IFN $\gamma$  (hIFN $\gamma$ ), and macrophage colony stimulating factor (MCSF) were obtained from R & D Systems (Minneapolis, MN). Rat anti-mouse IL-4R $\alpha$  (CD124) M1 antibody was obtained from BD Pharmingen (Franklin Lakes, NJ). Grade V Chicken Egg Albumin (OVA) was obtained from Sigma-Aldrich (St. Louis, MO). Low-Tox<sup>®</sup>-M Rabbit Complement was obtained from Cedarlane Laboratories (Burlington, NC). Rat anti-mouse IL-12 (p40/p70) and rat anti-mouse IFN $\gamma$  were purchased from BD Pharmingen (Franklin Lakes, NJ).

### Preparation of macrophages

BALB/c, BALB/c RAG2<sup>-/-</sup>, and BALB/c DO11.10 x RAG2<sup>-/-</sup> were purchased from Taconic Farms (Hudson, NY). BALB/c IL-4R $\alpha$ <sup>-/-</sup> and BALB/c IL-4R $\alpha$ xRAG2<sup>-/-</sup>

mice were bred in the animal care facility at the University of Maryland, Baltimore (UMB) [50]. All experimental procedures were performed under the auspices of our approved animal protocol in accordance to the guidelines issued by the Institutional Animal Care and Use Committee at the University of Maryland, Baltimore.

Bone marrow was isolated from the hind limbs of mice and cultured overnight in RPMI-1640 supplemented with 10% FBS, 100 units/mL penicillin, 100 µg/mL streptomycin, 2 mM glutamine. Non-adherent cells were collected by centrifugation and cultured at  $1.0 \times 10^6$  cells/mL in the presence of 20 ng/ml MCSF to generate bone-marrow derived, MCSF-dependent macrophages (BMM). After 3 days in culture, fresh media was added. After 6 days in culture, the adherent cells were isolated using a cell scraper and collected by centrifugation. These cells were routinely > 95% F4/80<sup>+</sup>/CD11b<sup>+</sup> macrophages. BMM were washed and transferred to BALB/c IL-4RαxRAG2<sup>-/-</sup> mice by intraperitoneal (IP) injection at  $5 \times 10^6$  cells per mouse. BMM were cultured in complete RPMI at  $1 \times 10^6$  cells per ml for 48 h in the presence or absence of IL-4 (10 ng/ml). The cells were harvested using a non-enzymatic chelator (Cellgro, Mediatech, Inc. Manassas, VA) and analyzed by FACS.

#### Western blot

Spleens were harvested from recipient mice six weeks after BMM transfer or from control BALB/c mice (n = 4). Single cell suspensions were prepared and pooled. The cells were then cultured in the presence or absence of IL-4 (10 ng/ml) for 30 min. Cells were lysed and immunoprecipitated with rabbit anti-mouse STAT6 (M-20, Santa Cruz). The precipitates were washed in lysis buffer and solubilized in SDS sample buffer. The samples were separated on 7.5% SDS-polyacrylamide gels before transfer to a polyvinylidene difluoride (PVDF) membrane. The membranes were then probed with a monoclonal anti-phosphotyrosine antibody, RC20. The bound antibodies were detected using enhanced chemiluminescence (Amersham, Arlington, IL). The blots were stripped and re-probed with anti-STAT6.

#### Preparation of TH2 cells

TH2-effectors were prepared in vitro as described [16,50]. Briefly, lymph nodes were isolated from BALB/c DO11.10 × RAG2<sup>-/-</sup> mice and crushed into a single cell suspension. Spleens were isolated from BALB/c mice, crushed into a single cell suspension, and depleted of T-cells using anti-Thy 1.2 antibody (HO1349 supernatant) followed Low-Tox<sup>®</sup>-M Rabbit Complement. The T-depleted spleen cells were irradiated at 3000 RADs, and used as antigen presenting cells.

The lymph node cells ( $5.0 \times 10^5$ ) were cultured with irradiated splenocytes at a 20-fold excess in the presence

of 10 µg/mL anti-IL-12, 10 µg/mL anti-IFNγ, 50 ng/mL mL-4, and 1 µM OVA peptide. The cells were stimulated for four days and passed at a 1:5 dilution in the presence of 20 U/mL hIL-2. After 4 days of rest, the lymph node cells were restimulated as described above with a 10 fold excess of splenocytes, followed by another 4 days of rest prior to intravenous (IV) transfer to recipient mice. These cells were routinely > 10% + for IL-4 production after restimulation [16].

#### Asthma induction

TH2 cells were transferred to BALB/c IL-4RαxRAG2<sup>-/-</sup> mice intravenously at  $1.0 \times 10^7$  cells per mouse one day after the macrophage transfer. The subsequent day chicken egg ovalbumin (OVA) was adsorbed to aluminum hydroxide (Alum) at a 1:1 ratio by slow rotation for 30 min at room temperature and injected interperitoneally into the BALB/c IL-4RαxRAG2<sup>-/-</sup> mice delivering 100 µg of OVA/Alum per mouse. The mice were boosted interperitoneally with 100 µg of OVA/Alum per mouse, prepared as previously described, 14 days after the initial priming [16]. The mice were exposed, to a 1.0% (w/v) OVA/PBS solution by nebulization for 20 min on days 19, 22, and 27.

#### Evaluation of airway inflammation

Mice were anaesthetized 48 h after the last OVA challenge. Bronchial lavage was performed on each mouse by inserting a 1 mm tube into the trachea and flushing the lungs with 1 ml of PBS. The samples were centrifuged and the supernatant was used for cytokine analysis. The cellular component of the bronchoalveolar lavage (BAL) was resuspended in PBS. Total cell counts were determined. Cytospin preparations of the cells were stained with Diff-Quick (Dade Behring, Newark, DE) and differential cell counts were performed based on cell morphology and staining using light microscopic analysis.

#### Lung histology, immunohistochemistry, and immunofluorescence

The lungs were prepared for histology by perfusing the right ventricle with PBS. The samples were fixed in 10% formalin for 2 h at room temperature and then stored in 70% ethanol. Paraffin sections of the samples were produced and stained with either hematoxylin and eosin (H&E) or periodic acid Schiff (PAS). The degree of lung inflammation was scored as previously described [16] ranging from 0 (no inflammation) to 3 (maximum pathology). Immunohistochemistry was performed as described [51] using rabbit anti-mouse YM1/2 polyclonal antibody (StemCell Technologies, Vancouver, BC), rabbit anti-mouse F4/80, rabbit anti-mouse Mac-3 (BD Pharmingen), hamster anti-mouse CD3ε monoclonal antibody-PE (BD

Pharmingen), or control rabbit IgG (StemCell Technologies, Vancouver, BC).

Lung sections were also analyzed by immunofluorescence microscopy. The sections were de-paraffinized and treated with an antigen retrieval solution of 0.1 M citric acid, 0.1 M sodium citrate for 20 min. After changes in PBS, the slides were immersed in methanol/0.3% H<sub>2</sub>O<sub>2</sub> for 30 min to exhaust endogenous peroxidase activity. The sections were then preincubated with 10% Goat Serum for 20 min at room temperature, followed by Rat anti-Mouse Mac-3 (BD Pharmingen) or non-immune rat serum for 1 h at room temperature. After PBS washes, the secondary antibody Goat anti-Rat Alexa Fluor 555 (Molecular Probes by Life technologies) was applied for 30 min at room temperature. The slides were rinsed in PBS and incubated with rabbit anti-mouse YM1/2 (StemCell Technologies Inc.) or non-immune rabbit serum for 1 h at room temperature, followed by goat anti-Rabbit Alexa Fluor 488 (Invitrogen) for 30 min. The slides were rinsed in PBS and incubated with DAPI for 2 min. Fluorescently stained slides were viewed on a Nikon E-800 fluorescent microscope using a Nikon 40×/0.75 Plan Fluor objective. Blue (DAPI), red (Mac3), and green (YM1/2) images of the same field were captured by a Retiga EXi camera (Q imaging, Canada) operated by Volocity software (PerkinElmer Inc.) using identical capture settings for experimental and control slides. The 3 color images were merged. Five fields were analyzed for the total number of nuclei, total number of cells staining red only, number of cells staining green only, and number of cells with both colors (yellow). The percentage of cells in each category was calculated by dividing each number by the total number of nuclei per field.

#### FACS analysis

To prepare single cell suspensions from whole lungs, tissues were subjected to DNase (Roche) and collagenase (Worthington Biochemical) treatment for 30 min at 37°C as described previously [52]. Tissue digests then were passed through 40 µm cell strainers (BD Falcon). Cells were collected by centrifugation and washed three times in a PBS/2% FBS solution (FACS buffer). The cells were resuspended in FACS buffer and pushed through a filter cap. Fc receptors were blocked using a rat anti-mouse CD16/CD32 antibody (2.4 G2, BD Pharmingen, Franklin Lakes, NJ). Cells were then incubated for 30 min at 4°C in the presence of anti-F4/80, anti-CD11b, and anti-IL-4Rα. Cells were collected by centrifugation, washed three times and resuspended in FACS buffer. Flow cytometric analysis was performed using Becton Dickinson FACSscan™ and Becton Dickinson FACSCalibur™ machines. Live cells were gated on forward by side scatter and analyzed for F4/80 by CD11b staining. The cells expressing

high levels of both CD11b and F4/80 have been shown to be macrophages [52,53] and these cells were analyzed for expression of IL-4Rα. Data was analyzed using FlowJo software v8.5.3 (Treestar, CostaMesa, CA).

Single cell suspensions of BMM were incubated with Fc Block (2.4 G2, BD Biosciences) followed by staining with anti-Mac3-PE or isotype control. Cells left unstained or treated with isotype control antibodies were used as controls.

Antibodies used for flow cytometric analysis include: murine IL-4Rα-M1 (R-Phycoerythrin (PE) or FITC-conjugated rat anti-mouse CD124) (BD Pharmingen, Franklin Lakes, NJ), F4/80 (eBiosciences), rat anti-mouse CD11b (Integrin α<sub>m</sub> chain, Mac-1 α chain) monoclonal antibody-PE (BD Pharmingen), rat anti-mouse Mac-3-PE (BD), and rabbit anti-YM1 (StemCell Technologies, Inc).

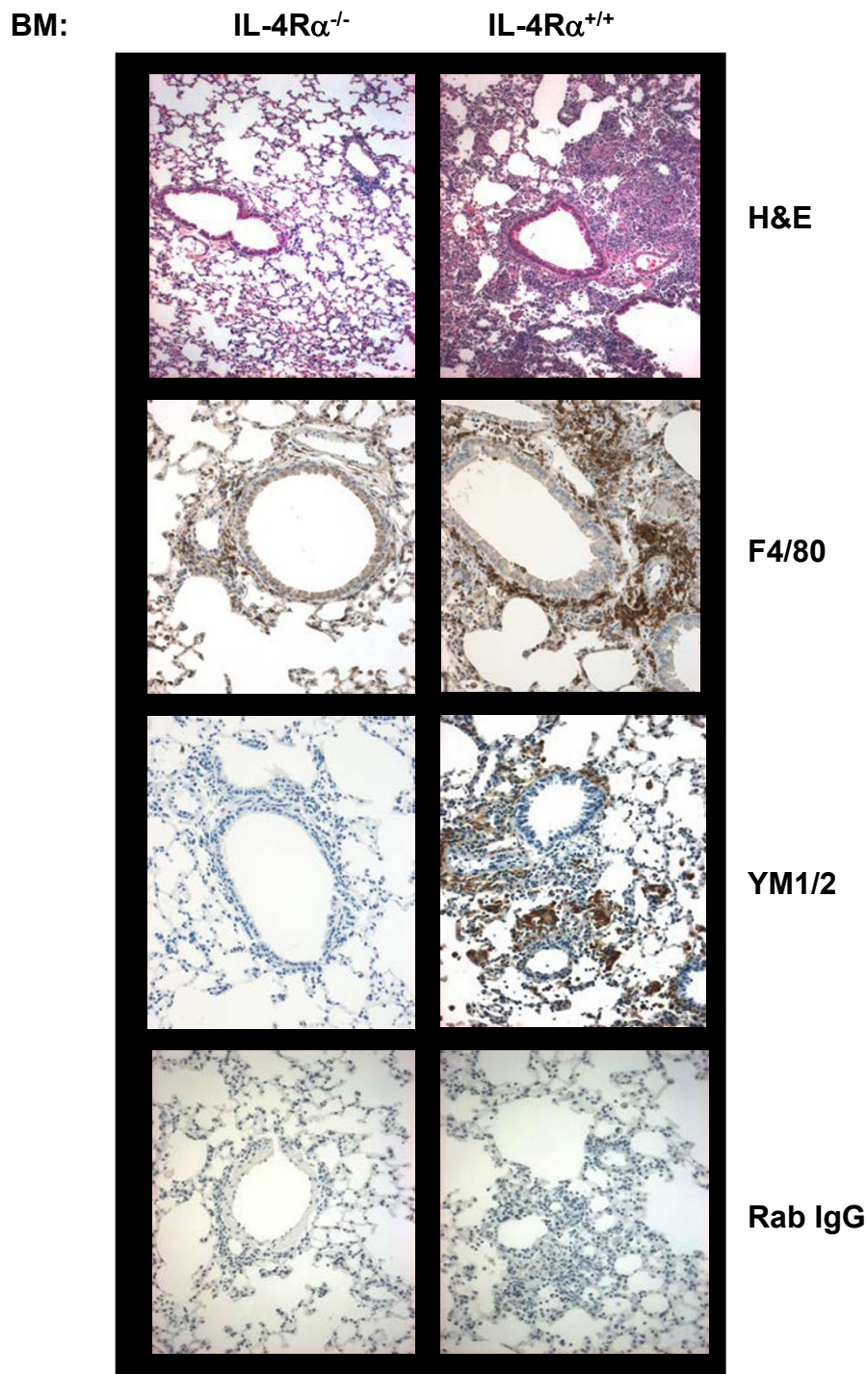
## Results

### YM1<sup>+</sup> AAM are present in lungs of Chimeric mice receiving IL-4Rα<sup>+</sup> bone-marrow and TH2 cells

Using bone-marrow chimeras, we previously demonstrated a strong correlation between the severity of allergic lung inflammation induced by the classic alum/ovalbumin prime/boost/challenge protocol and the presence of IL-4Rα<sup>+</sup> bone-marrow [16]. The enhanced inflammation was most evident when IL-4Rα<sup>+/+</sup> bone-marrow was transferred to IL-4Rα<sup>-/-</sup> recipient mice in the presence of TH2 cells. Since bone-marrow derived macrophages adopt an alternative phenotype in response to the TH2 cytokines IL-4 and IL-13 [20], we analyzed lung sections from the OVA-primed chimeric mice for the expression of macrophage markers (Figure 1). We found that lung sections from IL-4RαxRag2<sup>-/-</sup> mice receiving IL-4Rα<sup>+/+</sup> bone-marrow (BM) had greater inflammation and enhanced staining for F4/80 than lungs from mice receiving IL-4Rα<sup>-/-</sup> BM. Furthermore, the lungs of OVA-primed mice receiving IL-4Rα<sup>+/+</sup> BM showed strong staining for the AAM marker YM1/2 while lungs from mice receiving IL-4Rα<sup>-/-</sup> BM were negative for YM1/2. These results show that expression of IL-4Rα on bone-marrow derived cells is required for AAM formation during allergic lung inflammation *in vivo*.

### Transfer of IL-4Rα<sup>+</sup> BMM was sufficient to enhance TH2-driven allergic lung inflammation

Human asthmatics have elevated numbers of macrophages in their lungs and increased amounts of chitinase family members in their blood and lung lavage fluid [41-49]. An increase in AAM was observed in children undergoing severe asthma exacerbation [40]. Furthermore, the presence of AAM has been correlated with eosinophilic inflammation induced by infection and by allergen challenge [32-39]. Therefore, we hypothesized that the IL-4Rα<sup>+</sup> macrophages, capable of becoming



**Figure 1** AAM are present in the lungs of chimeric mice receiving IL-4R $\alpha$ <sup>+/+</sup> bone-marrow. Balb/c IL-4R $\alpha$ xRAG2<sup>-/-</sup> mice were irradiated and reconstituted with bone-marrow cells isolated from IL-4R $\alpha$ <sup>-/-</sup> or IL-4R $\alpha$ <sup>+/+</sup> mice as previously described [16]. Six weeks later, the mice were provided with OVA specific TH2 effectors ( $1 \times 10^7$ /mouse) by tail vein injection. They were then sensitized to 100  $\mu$ g chicken egg ovalbumin (OVA) adsorbed to aluminum hydroxide (Alum) via i.p. injection on day 0 and boosted with the same reagent on day 14. Mice were exposed to 1% OVA in PBS by nebulization for 20 min each day on days 19, 22, and 27. Lung sections from OVA/alum primed mice were prepared and stained with H&E, anti-F4/80, anti-YM1/2, or control rabbit IgG as indicated. Digital images from a representative mouse ( $n = 4$ ) for the 2 groups are shown (20X). These results are representative of 3 independent experiments.

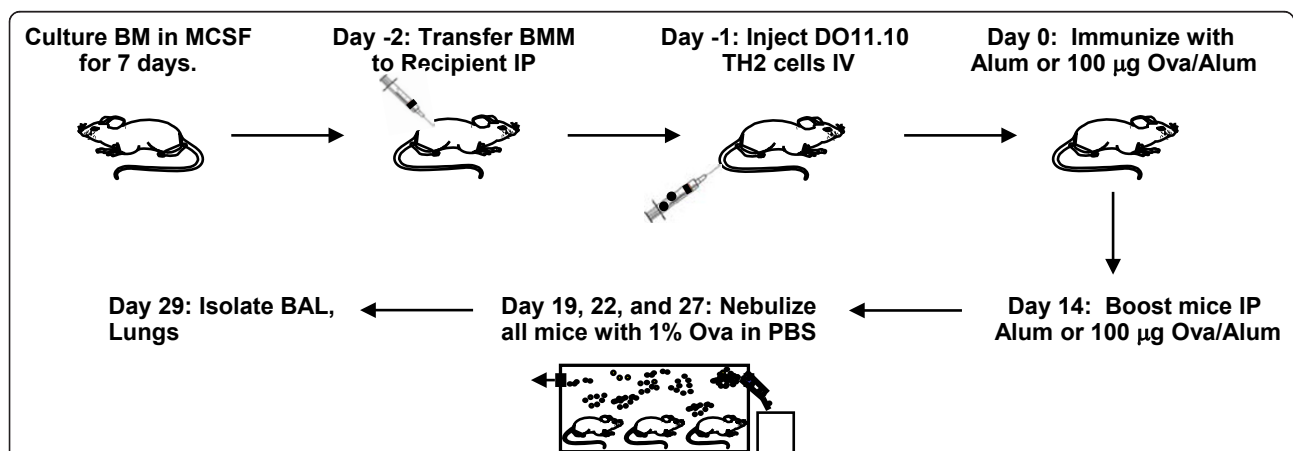
AAM in the presence of IL-4 and IL-13, actively promote allergic inflammation rather than simply acting as bystanders. To test the direct contribution of IL-4R $\alpha$ <sup>+</sup> macrophages on the severity of allergic lung inflammation, we developed a macrophage transfer approach (Figure 2). We chose this transfer approach as opposed to a macrophage depletion approach because most depletion strategies are not completely specific for macrophages and they cannot maintain the depleted state over the length of the asthma protocol [34,36,54].

We utilized bone-marrow-derived, M-CSF dependent macrophages (BMM) for transfer. We found that BMM prepared from either RAG2<sup>-/-</sup> or IL-4R $\alpha$ xRAG2<sup>-/-</sup> mice were routinely > 95% CD11b<sup>+</sup> (Figure 3A); as expected BMM isolated from RAG2<sup>-/-</sup> mice expressed the IL-4R $\alpha$  while those isolated from IL-4R $\alpha$ xRAG2<sup>-/-</sup> mice did not (Figure 3B). IL-4R $\alpha$ <sup>+</sup> BMM respond to IL-4 or IL-13 by inducing classic AAM genes while IL-4R $\alpha$ <sup>-/-</sup> BMM do not [20,55]. To determine whether transfer of BMM was feasible, we performed preliminary transfer studies. We found that IL-4R $\alpha$ <sup>+/+</sup> BMM transferred into IL-4R $\alpha$ <sup>-/-</sup> mice by IP injection could be detected in the spleen up to 6 weeks after transfer (Figure 3C). Furthermore, splenocytes from mice receiving IL-4R $\alpha$ <sup>+/+</sup> BMM, but not IL-4R $\alpha$ <sup>-/-</sup> BMM, demonstrated the tyrosine phosphorylation of STAT6 in response to in vitro IL-4 treatment, albeit at reduced levels when compared to control BALB/c splenocytes (Figure 3D). These results demonstrate that macrophages adoptively transferred intraperitoneally are capable of populating lymphoid tissue.

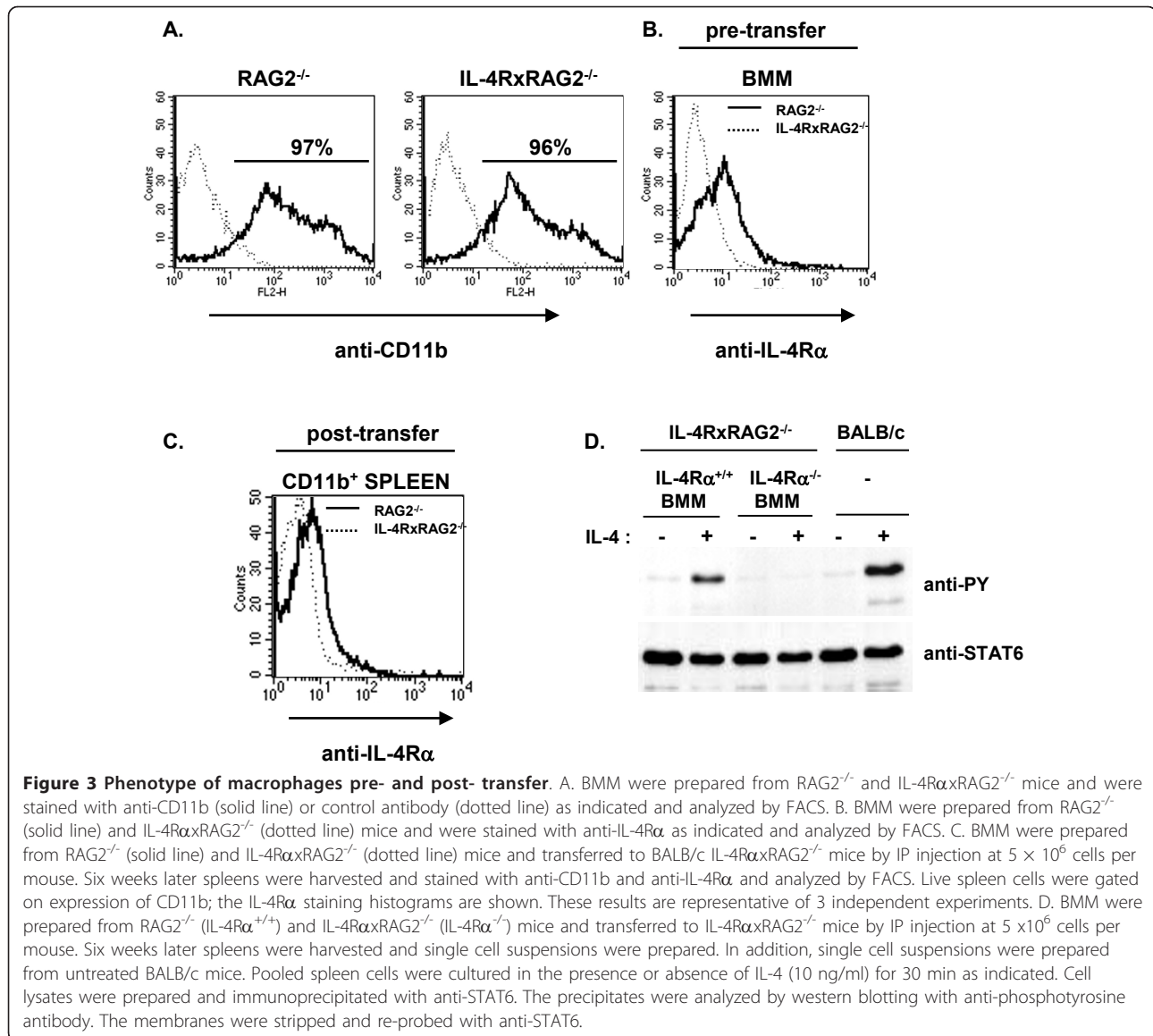
To examine the impact of these BMM on allergic inflammation in vivo, we transferred BMM prepared from IL-4R $\alpha$  positive or negative mice to IL-4R $\alpha$ xRAG2<sup>-/-</sup>

recipient mice and provided in vitro primed wild type TH2 effectors one day later by IV injection (Figure 2). These recipient mice were then immunized intraperitoneally with alum alone or OVA/alum and challenged with OVA as shown (Figure 2). The adoptive transfer of IL-4R $\alpha$ <sup>+/+</sup> BMM resulted in severe TH2-driven, OVA-induced allergic lung inflammation in IL-4R $\alpha$ xRAG2<sup>-/-</sup> recipient mice as shown in representative H&E images (Figure 4A, panels e, f), while transfer of IL-4R $\alpha$ <sup>-/-</sup> BMM resulted in lower levels of lung inflammation (Figure 4A, panels b, c). Little to no inflammation was observed in the absence of TH2-effectors, as expected (Figure 4A, panels a and d; Figure 4B). The transfer of IL-4R $\alpha$ <sup>+/+</sup> BMM greatly enhanced the amount of TH2-driven, OVA-induced inflammation around airways and blood vessels in the lungs (pathology score: 3+) as compared to transfer of IL-4R $\alpha$ <sup>-/-</sup> BMM (pathology score: 1+) (Figure 4B). Numerous airways were filled with eosinophils and mononuclear cells in the lungs of mice receiving IL-4R $\alpha$ <sup>+/+</sup> BMM (Figure 4A, panel f). Since in both cases the recipient mice lacked IL-4R $\alpha$ , the lung epithelial cells were negative for PAS staining, indicating they were not producing mucus (data not shown) [56,57].

The cellular composition in the bronchoalveolar lavage (BAL) of individual mice was evaluated by differential staining after cytopspin. Representative images are shown in Additional file 1: Figure S1. Mice that received TH2 cells alone or TH2 cells plus IL-4R $\alpha$ <sup>-/-</sup> BMM showed a similar pattern in BAL cell numbers after priming and challenge with OVA (Figure 4C). For example, in the absence of transferred macrophages there were  $6.1 \times 10^5$  macrophages and  $2.5 \times 10^5$  eosinophils recovered in the BAL while in the presence of IL-4R $\alpha$ <sup>-/-</sup> BMM this was



**Figure 2 Protocol for macrophage transfer and inflammation induction.** Bone-marrow derived macrophages (BMM) were derived from IL-4R $\alpha$ <sup>+/+</sup> or IL-4R $\alpha$ <sup>-/-</sup> mice on the RAG2<sup>-/-</sup> background as described in the Materials and Methods. BMM were washed and transferred to BALB/c IL-4R $\alpha$ xRAG2<sup>-/-</sup> mice by IP injection at  $5 \times 10^6$  cells per mouse. The next day, in vitro differentiated OVA-specific TH2 cells were injected IV at  $1 \times 10^7$  per mouse. They were then sensitized to 100 µg chicken egg ovalbumin (OVA) adsorbed to aluminum hydroxide (Alum) via i.p. injection on day 0 and boosted with the same reagent on day 14. Mice were exposed to 1% OVA in PBS by nebulization for 20 min each day on days 19, 22, and 27.



modestly increased to  $9.7 \times 10^5$  macrophages and  $3.6 \times 10^5$  eosinophils. The total cell number recovered in the BAL was increased ~1.5 fold in the presence of *IL-4Rα*<sup>-/-</sup> BMM. However, mice that received TH2 cells plus *IL-4Rα*<sup>+/+</sup> BMM showed an altered BAL cell composition. In the presence of *IL-4Rα*<sup>+/+</sup> BMM there was an increase in total BAL cells as compared to the other 2 groups and this increase was largely due to a significant increase in eosinophils. On average there were  $10.4 \times 10^5$  macrophages, similar to the *IL-4Rα*<sup>-/-</sup> BMM group, and  $9.8 \times 10^5$  eosinophils representing a greater than 2-fold increase in the number of eosinophils.

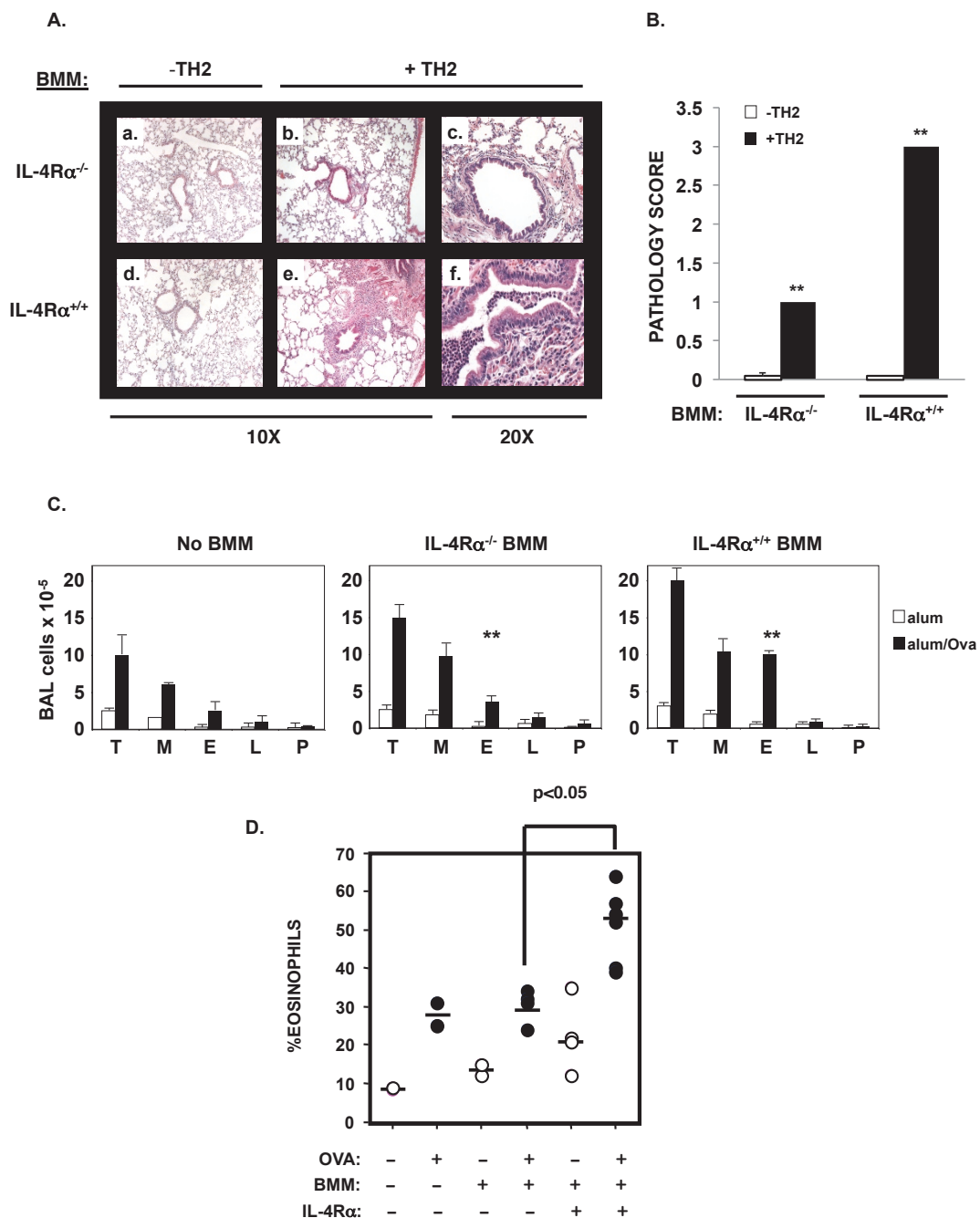
A similar trend was apparent when the percentage of eosinophils in the BAL was evaluated (Figure 4D). Transfer of TH2 effectors alone resulted in some airway eosinophilia (10% eosinophils in the BAL) in response

to inhaled OVA (Figure 4D). This level of eosinophilia was enhanced by immunization with OVA to 30%. The addition of *IL-4Rα*<sup>-/-</sup> BMM did not alter the level of TH2-driven eosinophilia. However, transfer of *IL-4Rα*<sup>+/+</sup> BMM resulted in an increase in airway eosinophilia in response to inhaled OVA (20%); this was further increased by OVA immunization to 55%. Thus, transfer of *IL-4Rα*<sup>+/+</sup> macrophages significantly enhanced TH2-dependent, OVA-stimulated airway eosinophilia.

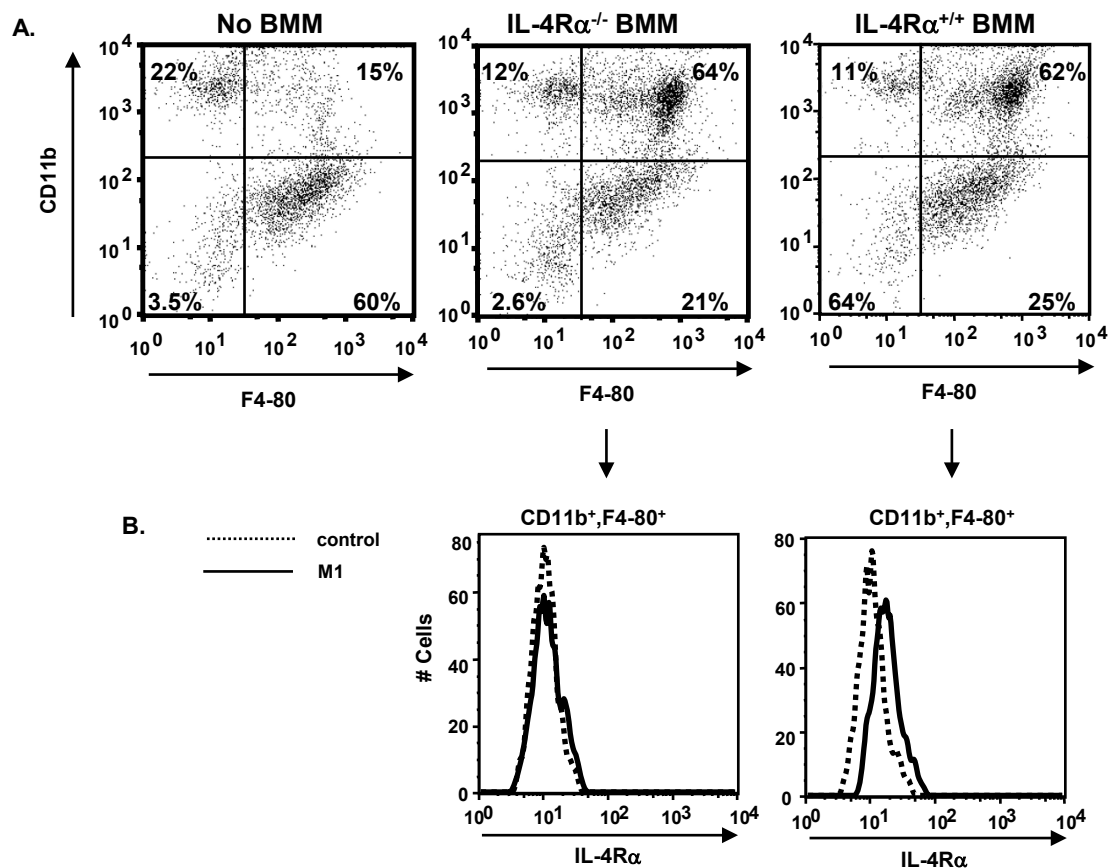
#### **IL-4Rα<sup>+</sup> BMM adopt the alternative phenotype in vivo**

Lung digests were prepared from OVA immunized and challenged mice to analyze the recruitment of the transferred BMM to the lungs (Figure 5). Mice receiving either *IL-4Rα*<sup>-/-</sup> or *IL-4Rα*<sup>+/+</sup> BMM showed an increase in the total numbers of lung cells recovered as compared to





**Figure 4 Transfer of IL-4Rα<sup>+/+</sup> BMM enhances the TH2-driven, OVA-induced eosinophilic inflammation in the lungs and airways of mice.** BMM were prepared from IL-4Rα<sup>+/+</sup> or IL-4Rα<sup>-/-</sup> mice as described above. BMM (5 × 10<sup>6</sup>) were transferred by IP injection to IL-4RαxRAG2<sup>-/-</sup> mice on day -1. On day 0 mice were injected with PBS alone or with TH2 cells derived from D011.10 mice as indicated (1 × 10<sup>7</sup>). The mice were immunized with OVA/alum on day 1 as indicated, followed by boost and challenge as described in Figure 2. Lung sections from OVA/alum primed mice were prepared and stained with H&E. A. Several digital images (A-F) from a representative mouse from each group (n = 4) are shown at 10 and 20X. B. The slides from individual mice were evaluated for the degree of pathology (0-3) as described in Materials and Methods. The mean score for each group is represented in the form of bar graphs ± SEM. In most cases the SEM was too small to show on the graph. Significant differences between the two groups noted were determined using the Student's *T*-test. \*\* (*p* < 0.01). C. BMM were prepared as described above and transferred by IP injection to IL-4RαxRAG2<sup>-/-</sup> mice on day -1. On day 0 all mice were injected with TH2 cells derived from D011.10 mice (1 × 10<sup>7</sup>). The mice were immunized with alum or OVA/alum on day 1 as indicated, followed by boost and challenge as described in Figure 2. The BAL from individual mice (n = 3-4) was evaluated by differential counting after cytopspin. Total numbers of cells present in the BAL are represented in the form of bar graphs ± SEM (T, total cells; M, macrophages; E, eosinophils; L, lymphocytes; and P, polymorphonuclear leukocytes). \*\* Significant differences between the two groups noted were determined using the Student's *T*-test (*p* < 0.01). D. The percentage of eosinophils in the BAL isolated from the individual mice is shown with the mean of the values represented by the bar. Significant differences between groups were determined using the Student's *T*-test. \* (*p* < 0.05) These results are representative of 3 independent experiments.



**C.**

BMM	F4-80 <sup>-</sup> /Cd11b <sup>-</sup>	F4-80 <sup>+</sup> /CD11b <sup>lo</sup>	F4-80 <sup>+</sup> /CD11b <sup>hi</sup>	F4-80 <sup>-</sup> /CD11b <sup>hi</sup>
None	0.2 × 10 <sup>7</sup>	3.4 × 10 <sup>7</sup>	0.8 × 10 <sup>7</sup>	1.2 × 10 <sup>7</sup>
IL-4Rα <sup>-/-</sup>	0.4 × 10 <sup>7</sup>	3.0 × 10 <sup>7</sup>	9.0 × 10 <sup>7</sup>	1.7 × 10 <sup>7</sup>
IL-4Rα <sup>+/+</sup>	0.3 × 10 <sup>7</sup>	3.6 × 10 <sup>7</sup>	8.8 × 10 <sup>7</sup>	1.6 × 10 <sup>7</sup>

**Figure 5 Phenotype of macrophages in the lungs of recipient mice.** BMM were prepared from IL-4Rα<sup>+/+</sup> or IL-4Rα<sup>-/-</sup> mice as described above. Where indicated BMM (5 × 10<sup>6</sup>) were transferred by IP injection to IL-4RαxRAG2<sup>-/-</sup> mice on day -1. On day 0 all mice were injected with TH2 cells derived from D011.10 mice (1 × 10<sup>7</sup>). The mice were immunized with OVA/alum on day 1 as indicated, followed by boost and challenge as described in Figure 2. Lung digests were prepared from mice (n = 4) as described in Materials and Methods, pooled, and counted. Lung cells were stained with anti-CD11b, and anti-F4/80, along with anti-IL-4Rα or control IgG. A. Live cells were gated on forward by side scatter and analyzed for F4/80 by CD11b staining. B. The cells were gated for *high* expression of CD11b and F4/80 and analyzed for expression of IL-4Rα. The histograms comparing control staining (dotted line) to anti-IL-4Rα staining (solid line) of the gated cells is shown. C. The numbers of cells expressing the markers were calculated using the percentages of cells in each quadrant in Panel (A) and the total lung cells recovered. These results are representative of 2 independent experiments.

mice receiving TH2 cells alone from 5.6 × 10<sup>7</sup> to 14.0 × 10<sup>7</sup> and 14.2 × 10<sup>7</sup> total cells, respectively. Mice that received TH2 effectors alone showed few F4/80<sup>+</sup>, CD11b<sup>hi</sup> cells (15%, 0.8 × 10<sup>7</sup>) in the lungs (Figure 5A, C). Our previous reports showed that F4/80<sup>+</sup>, CD11b<sup>hi</sup> cells in the lungs are macrophages [52,53]. Mice receiving either IL-4Rα<sup>-/-</sup> or IL-4Rα<sup>+/+</sup> BMM showed an increase in the percentages and the numbers of F4/80<sup>+</sup>, CD11b<sup>hi</sup>

cells in the lungs (64%, 9.0 × 10<sup>7</sup> and 62%, 8.8 × 10<sup>7</sup>, respectively). The F4/80<sup>+</sup>, CD11b<sup>hi</sup> cells were positive for IL-4Rα expression in the mice that received IL-4Rα<sup>+/+</sup> BMM, but not in the mice that received IL-4Rα<sup>-/-</sup> BMM (Figure 5B), showing that the transferred IL-4Rα<sup>+/+</sup> BMM were able to localize to the lung.

To analyze the presence of AAM in the lung tissue, lung sections were analyzed by immunohistochemistry

(Figure 6). The lungs of mice receiving IL-4R $\alpha$ <sup>+/+</sup> BMM showed enhanced F4/80 staining of inflammatory cells surrounding airways and strong staining for YM1/2 in cells in the lung tissues and in the airways (Figure 6A). The YM1/2 staining was dependent on the presence of TH2 cells, since in their absence we did not detect any YM1/2 positive cells in the lungs of mice receiving IL-4R $\alpha$ <sup>+/+</sup> BMM (Additional file 2: Figure S2). The lungs of mice receiving IL-4R $\alpha$ <sup>-/-</sup> BMM were largely negative for YM1/2 even though they showed modest inflammation. None of these sections were positive for iNOS, a marker of classically activated macrophages (data not shown). Taken together, these results show that the IL-4R $\alpha$ <sup>+/+</sup> BMM were able to differentiate to the alternative phenotype in a TH2 environment. The lungs of mice receiving either the IL-4R $\alpha$ <sup>-/-</sup> or the IL-4R $\alpha$ <sup>+/+</sup> BMM were equally positive for CD3 staining, indicating that the T-cells were recruited to the inflamed lung in both cases (Figure 6A, B).

To characterize the YM1/2<sup>+</sup> cells further, we performed immunohistochemistry on serial sections of the same lung region using antibodies against F4/80, Mac3, and YM1/2 (Figure 7A). Previous studies had shown that parasitic infection with *Nb* induced the expression of AAM genes in Mac3<sup>+</sup> macrophages in the lung suggesting that Mac3 (also known as CD107b and lysosomal-associated membrane protein 2, LAMP2) may also be induced by IL-4 and IL-13 [58]. Indeed, we found that IL-4 treatment of BMM in vitro increased expression of Mac3 (Additional file 3: Figure S3). Furthermore, both anti-Mac3 and anti-YM1/2 stained the large mononuclear cells found in close association with eosinophils in the airways and scattered in the lung tissue; several examples are marked by the arrow heads (Figure 7A). F4/80 also stained these cells, in addition to other cells marked by the asterisk surrounding the blood vessels; inflammatory cells surrounding blood vessels were largely negative for Mac3 and YM1/2. These results suggest that both Mac3 and YM1/2 can mark AAM in the inflamed lung, while F4/80 stains AAM as well as other inflammatory cells.

To determine whether macrophages co-expressed Mac3 and YM1/2, we stained the lung sections for both and analyzed them by immunofluorescence (Figure 7B). We found that a substantial fraction (25%) of the nucleated cells in the airway expressed both Mac3 and YM1/2. We also found cells expressing either Mac3 (30%) or YM1/2 (34%) alone and cells lacking expression (11%) suggesting heterogeneity in the macrophage population. These observations show that Mac3 and YM1/2 can be co-expressed in the inflamed lung.

#### **The presence of IL-4R $\alpha$ <sup>+/+</sup> BMM enhanced the levels of TNF $\alpha$ and Chemokines in the BAL fluid**

To determine whether the presence of IL-4R $\alpha$ <sup>+/+</sup> BMM altered cytokine or chemokine production, the amount of

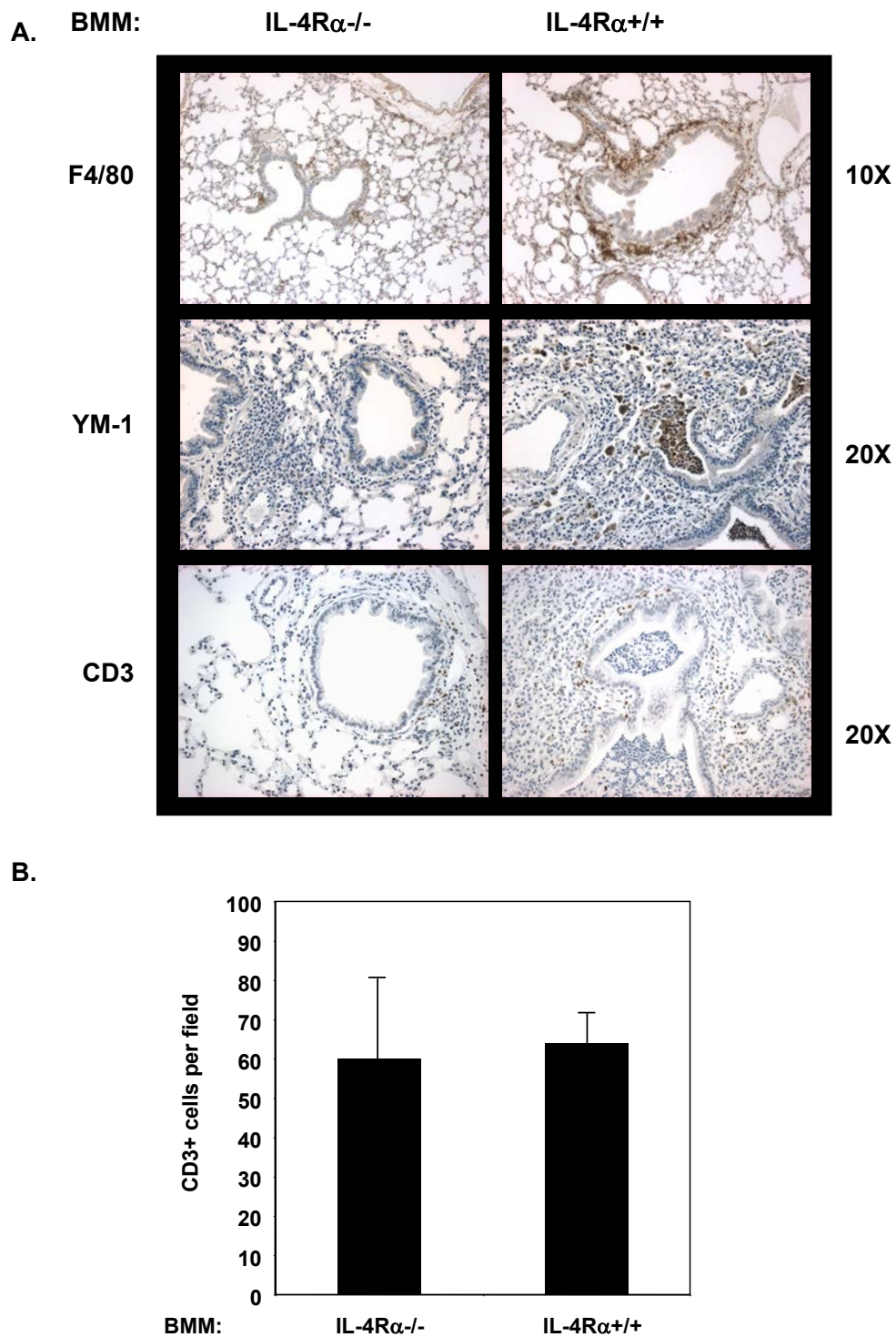
cytokines and chemokines in the BAL fluid were analyzed using Pierce Search Light multiplex analysis (Figure 8). The concentrations of IL-4 and IL-5 in the BAL fluid were similar in mice receiving IL-4R $\alpha$ <sup>-/-</sup> or IL-4R $\alpha$ <sup>+/+</sup> BMM, consistent with the presence of equal numbers of T-cells in the lung (Figure 6). There was a trend of more IL-13 in the BAL of mice receiving IL-4R $\alpha$ <sup>+/+</sup> BMM, but this was not statistically significant. TNF $\alpha$  levels in the BAL fluid were greater in mice receiving IL-4R $\alpha$ <sup>+/+</sup> BMM; the difference was statistically significant ( $p < 0.0001$ ). Furthermore, the increased levels of eotaxin-1, RANTES, and MCP-1 in mice receiving IL-4R $\alpha$ <sup>+/+</sup> BMM were statistically significant; levels of TARC were similar between the two groups.

#### **Discussion**

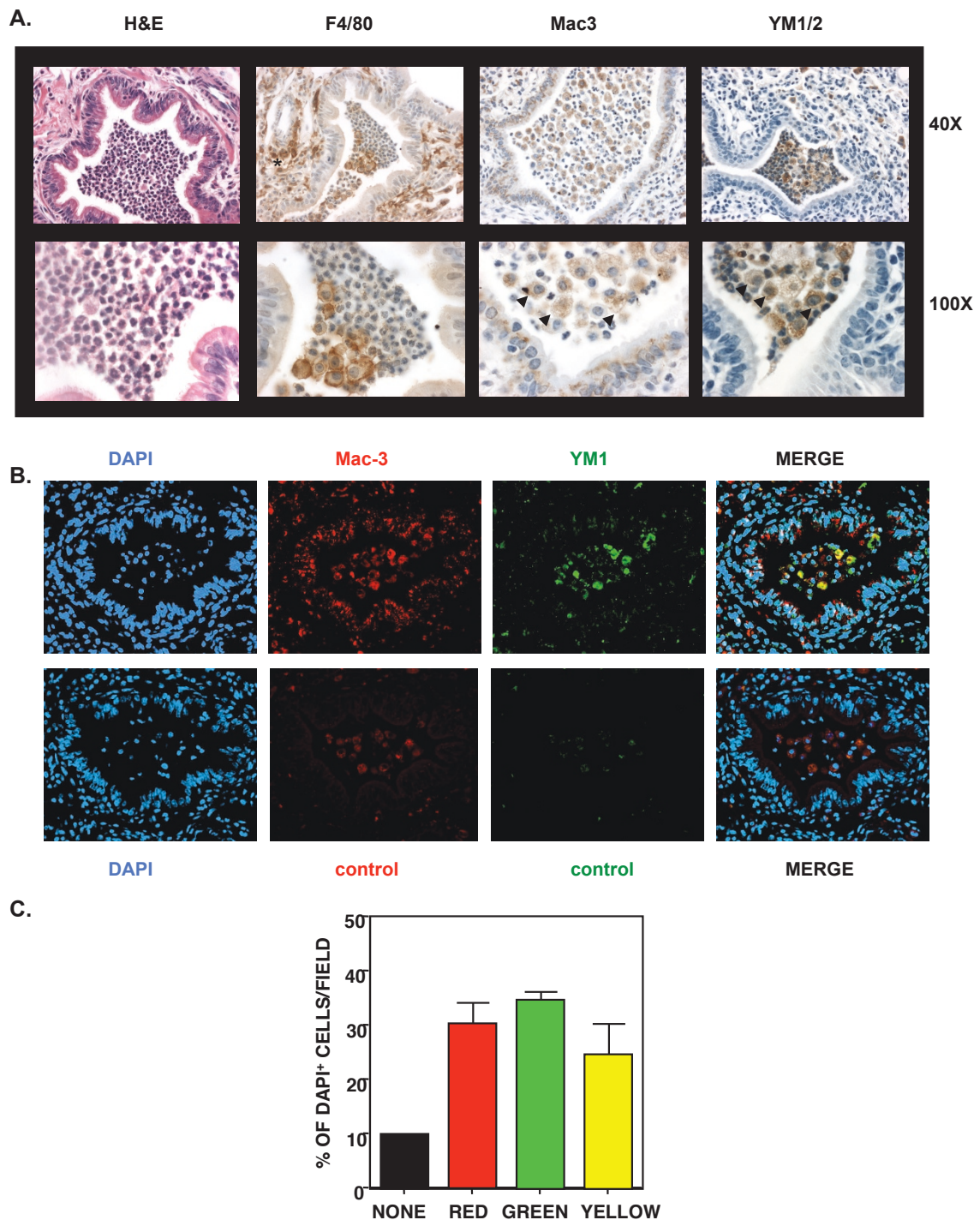
The contribution of IL-4, IL-13 and IL-4R $\alpha$  to allergic asthma disease progression and pathological characteristics has been examined in some detail [7,8,11,13]. However, the role of AAM in allergic lung inflammation has remained unclear. Several studies, including our own, have demonstrated a correlation between the presence of IL-4R $\alpha$ <sup>+</sup> macrophages and enhanced eosinophilic inflammation using infection and allergic models in mouse and man [16,32-47]. Previous studies have used clodronate loaded liposomes to deplete macrophages to demonstrate their role in infection-induced inflammation [35]. While informative, this approach is limited because clodronate can deplete any phagocytic cell, not only macrophages; the liposomes can induce a confounding inflammatory response on their own; and the depletion only lasts for 3 days [54].

In this study, we tested whether IL-4R $\alpha$ <sup>+</sup> macrophages were sufficient to enhance allergen-induced eosinophilic inflammation. Since we provided OVA-specific, primed TH2-effectors, additional exposures to OVA would mimic allergen-induced exacerbation. Using this approach, we found that adoptive transfer of IL-4R $\alpha$ <sup>+/+</sup> BMM, but not IL-4R $\alpha$ <sup>-/-</sup> BMM, significantly enhanced the TH2-dependent, OVA-induced recruitment of eosinophils to the lung. As would be expected in this model of inflammation, we found little to no inflammation in the absence of TH2 cells. Thus, in the presence of TH2 cells, transfer of IL-4R $\alpha$ <sup>+</sup> macrophages is *sufficient* to enhance inflammation. However, it is not entirely clear whether they are the primary effectors of the enhanced inflammation or whether they stimulate another cell type.

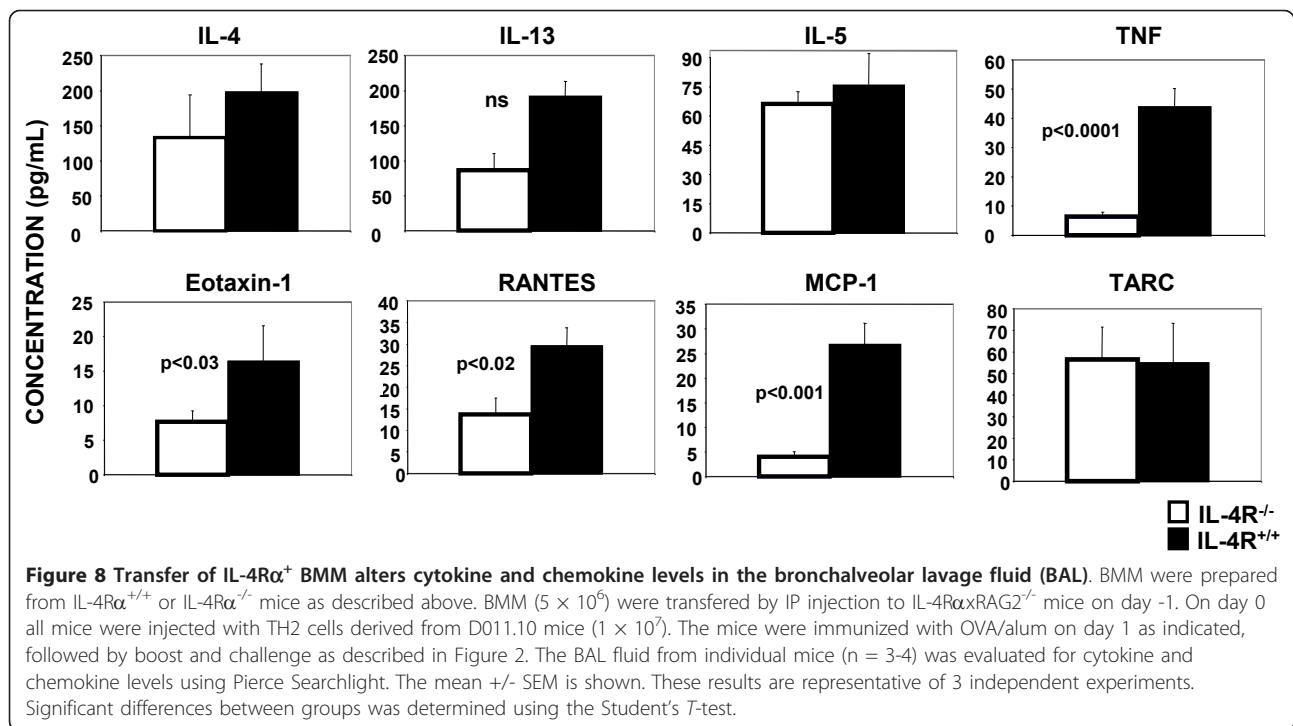
We found that lungs from OVA-challenged IL-4R $\alpha$ -deficient mice that received TH2 cells and IL-4R $\alpha$ <sup>+</sup> BMM showed positive staining for YM1/2. Immunohistochemistry of serial sections and immunofluorescence showed substantial overlap in staining of macrophages with YM1/2 and Mac3. The F4/80 staining showed a broader profile, overlapping with the YM1/2 and Mac3 staining, but also



**Figure 6** Transfer of IL-4R $\alpha$ <sup>+/+</sup> BMM leads to the presence of AAM in the lungs of mice. **A.** Lung sections from the OVA/alum primed mice shown in Figure 4 were stained with anti-F4/80, anti-YM1/2, or anti-CD3 as indicated. Images from a representative mouse from each group are shown at 10X or 20X as indicated. CD3+ cells appear brown. **B.** The CD3+ cells in each 20X field were counted (n = 5). The average number of CD3+ cells per field were calculated and graphed. Data represented as cell counts  $\pm$  SEM. These results are representative of 3 independent experiments.



**Figure 7 YM1/2 and Mac3 staining coincide in the allergic lung.** A. Serial sections of lungs from a representative OVA/alum-primed mouse that received IL-4R $\alpha$ <sup>+/+</sup> BMM were stained with H&E, anti-F4/80, anti-Mac3, or anti-YM1/2 as shown. Digital images were taken from the same region of the lung at 40X and 100X. Arrow heads highlight the staining of representative macrophages in the airways, while the asterisk highlights staining of macrophages surrounding blood vessels. B. Co-expression by immunofluorescence microscopy. A representative lung section was stained with rat anti-Mac3 and rabbit anti-YM1/2 (or control serum), followed by goat anti-Rat-PE and goat anti-rabbit-FITC. Nuclei were stained with DAPI. Digital images were captured for each color and processed as described in Materials and Methods. The 3 color images were merged into a single image. Appearance of yellow indicates expression of both Mac3 and YM1/2. C. Five fields were analyzed for the total number of nuclei, total number of cells staining red only, number of cells staining green only, and number of cells with both colors (yellow). The percentage of cells in each category was calculated by dividing each number by the total number of nuclei per field. These results are representative of 2 independent experiments.



staining other inflammatory cells, especially cells cuffing blood vessels. Our results are consistent with those from the *Nb* infection model showing that Mac3+ cells express AAM markers [58]. However, whether Mac3 will be a reliable cell surface marker for AAM in inflamed tissues remains to be firmly established. Using immunofluorescence microscopy, we observed an interesting heterogeneity in expression of Mac3 and YM1/2 with Mac3<sup>-</sup>/YM1/2<sup>-</sup>, Mac3<sup>+</sup>/YM1/2<sup>-</sup>, Mac3<sup>-</sup>, YM1/2<sup>+</sup>, and Mac3<sup>+</sup>, YM1/2<sup>+</sup> cells present in the inflamed lungs. Whether these different subsets mediate different effector functions is unknown.

AAM have been shown to participate in other TH2 mediated inflammatory responses. Mice infected with nematode parasites induced the localized development of AAM in response to IL-4 [32]. Recruitment of eosinophils to the lung and peritoneal cavity in mice infected with *Nb* was dependent on macrophages; the absence of macrophages greatly prevented eosinophil recruitment [34]. Furthermore, intratracheal administration of in vitro differentiated AAM elevated the typically low level of allergic inflammation seen in male mice [39]. Taken together, our results and those from the other parasite infection models and allergic lung inflammation models strongly suggest that AAM are important, active contributors to inflammation and are not just bystander cells responding to the TH2 cytokines.

In our BMM transfer model, all host cells were IL-4R<sup>α</sup><sup>-/-</sup>, including resident lung macrophages, and thus were unable to respond to IL-4 or IL-13. We detected IL-4R<sup>α</sup><sup>+</sup> macrophages in the lungs of mice that received

IL-4R<sup>α</sup><sup>+/+</sup> BMM by intraperitoneal injection. In addition, we detected YM1/2+ macrophages in the lungs of these mice, but not in lungs of mice that received BMM lacking the IL-4R<sup>α</sup>. These results show that the transferred BMM likely respond to the IL-4/IL-13 produced by the TH2 effectors in vivo and can localize to the lung. This is in contrast to studies using a parasite infection model reported by Jenkins et al. [59] where the majority of lung AAM was derived from proliferating resident lung cells and not from new immigrants. It is possible resident tissue macrophages proliferated in our model, however, since they lacked IL-4R<sup>α</sup>, they would not be able to differentiate into AAM. The relative contribution of AAM derived from newly arrived inflammatory macrophages versus AAM derived from resident lung macrophages to eosinophilic inflammation remains to be established.

An important question arising from these studies is how the IL-4R<sup>α</sup><sup>+</sup> macrophages actively enhance the inflammatory response. IL-4/IL-13 stimulated macrophages make a number of factors including high levels of arginase 1, and chitinase and chitinase-like family members, however their contribution to allergic inflammation is not well understood [17-20]. Deletion of arginase 1 had no effect on the level of allergic inflammation [60]. Deletion of the chitinase family member brp39 profoundly suppressed allergic inflammation by an unknown mechanism [61]. Another chitinase like family member, YM1/2 has been shown to enhance TH2 cytokine production by T-cells [62].

IL-4/IL-13 stimulation of macrophages induces the production of eotaxin 1 and 2 (CCL11 and CCL24) that are important for the chemotaxis of eosinophils [29]. This chemokine production is amplified by IL-33 leading to enhanced eosinophilic inflammation [37]. AAM also produce MDC (macrophage-derived chemokine; CCL22) and TARC (thymus and activation-regulated chemokine; CCL17) that recruit macrophages and TH2 cells respectively [20]. IL-4 stimulation of AAM has been shown to enhance the production of MIP-1 $\alpha$  (macrophage inflammatory protein-1; CCL3) a granulocyte chemokine [29]. The ability of AAM to produce chemokines may explain the enhanced recruitment of eosinophils we observed in mice receiving IL-4R $\alpha$ <sup>+/+</sup> macrophages. We observed increased amounts of eotaxin-1, RANTES, and MCP-1 in the BAL fluid of mice receiving IL-4R $\alpha$ <sup>+/+</sup> BMM, although the precise cellular source of these chemokines is not known. They could be derived from the AAM present in the lung and the BAL or they could be derived from another cell type responding to products made by the AAM.

In this regard, Medoff et al. found that an F4/80<sup>-</sup> myeloid cell type was able to produce chemokines in a STAT6-dependent manner that enhanced *both* T-cell and eosinophil recruitment to the lung [63]. Since AAM have been shown to produce IL-13, it is possible the AAM are indirectly responsible for the increase in chemokines found in the BAL by producing IL-13 that can act on other myeloid cell populations in the lung [35]. Another group has shown that AAM regulate the activity of myeloid dendritic cells in female mice, suggesting a mechanism whereby females are more susceptible to lung inflammation than males [39]. While not a focus of this study, it is possible products made by AAM enhance the antigen presenting function of dendritic cells leading to enhanced T-cell activation. Clarification of the specific myeloid/macrophage population directly responsible for the enhanced eosinophilic inflammation observed after IL-4R $\alpha$ <sup>+</sup> BMM transfer will require further investigation.

AAM may provide an environment hospitable to TH2 cells establishing a reciprocal relationship between these two cell types during the course of allergic inflammation. Such a relationship has been described as the innate-adaptive axis in asthma [35,41]. Chemokines produced by AAM such as TARC (CCL17) may enhance the recruitment of TH2 cells to the site of inflammation. Additionally, AAM increase expression of the IL-1 receptor antagonist (IL-1Ra), a decoy for IL-1 [17-20]. AAM can also produce IL-10 [17]. IL-10 suppresses IFN $\gamma$  and STAT1 regulated responses. Since IFN $\gamma$  can suppress TH2 differentiation, the IL-10 may act to perpetuate the Type 2 inflammatory response. Production of IL-1Ra and IL-13 by AAM may suppress the differentiation and function of TH17 cells [64]. In our model, where we provide high

numbers of in vitro differentiated TH2 cells exogenously, these regulatory processes may not be apparent. We did not see a difference in the number of T-cells in the lungs or a difference in the amount of IL-4 or IL-5 in the BAL fluid between the IL-4R $\alpha$ <sup>+</sup> or IL-4R $\alpha$ <sup>-</sup> transfer groups suggesting that the TH2 cells were being recruited and activated sufficiently in both settings. Additionally, there was no difference in the amount of IFN $\gamma$  in the BAL fluid, while the levels of IL-17 were below detection in all groups (data not shown).

However, we did observe a significant increase in the levels of TNF $\alpha$  in the BAL of mice receiving IL-4R $\alpha$  + BMM. While high levels of TNF $\alpha$  are typically associated with TH1- and TH17-mediated inflammatory diseases, TNF $\alpha$  levels have also been correlated with allergic inflammation in mice and with asthma severity in humans (reviewed in [65]). TNF $\alpha$  could play a role in the pathogenesis of asthma by stimulating a number of responses in inflammatory cells and structural cells including the recruitment and activation of eosinophils, the activation of mast cells, and the upregulation of adhesion molecules on endothelial and epithelial cells. The cellular source of our observed increase in TNF $\alpha$  in the BAL is unknown. Similar to the chemokines, many cell types are capable of producing TNF $\alpha$  including T-cells, macrophages, eosinophils, and epithelial cells [65]. AAM have also been shown to produce TNF $\alpha$  which can be enhanced by bacterial infection or LPS treatment [66,67]. Thus, it is possible the full set of cytokines and chemokines produced by AAM could favor TH2 dominance and promote a robust inflammatory environment in the lung.

## Conclusions

In summary, we have shown that transfer of IL-4R $\alpha$ <sup>+</sup> macrophages, but not IL-4R $\alpha$ <sup>-</sup> macrophages, is sufficient to enhance TH2-driven allergic inflammation. Since AAM were only present in the lungs of mice receiving IL-4R $\alpha$ <sup>+</sup> BMM, these findings suggest that AAM contribute to the severity of allergic lung inflammation in the ovalbumin model. This contribution could be mediated by products made by AAM including chemokines and chitinase family members. An innate:adaptive axis has recently been appreciated in mice and humans, especially during acute asthma exacerbations [35,41]. It will be informative to delineate the most important mediators produced by AAM that lead to enhanced inflammation in mouse models and in humans.

## Additional material

**Additional file 1: Figure S1 Differential staining of cells in the BAL.** BMM were prepared from BALB/c RAG2<sup>-/-</sup> (IL-4R $\alpha$ <sup>+/+</sup>) or IL-4R $\alpha$ xRAG2<sup>-/-</sup> (IL-4R $\alpha$ <sup>-/-</sup>) mice by culturing in MCSF for 7 days. These BMM (5 × 10<sup>6</sup>) were transferred by IP injection to IL-4R $\alpha$ xRAG2<sup>-/-</sup> mice on day -1. On day 0 all

mice were injected with TH2 cells derived from D011.10 mice ( $1 \times 10^7$ ). The mice were immunized with OVA/alum on day 1 as indicated, followed by boost and challenge as described in Figure 2. The cytopins of cells in the BAL were stained with Diff-Quick. Representative high power fields (100X) are shown.

**Additional file 2: Figure S2 TH2-dependence of AAM differentiation in vivo.** BMM were prepared from IL-4R $\alpha$ <sup>+/+</sup> mice and transferred ( $5 \times 10^6$ ) by IP injection to IL-4R $\alpha$ RAG2<sup>-/-</sup> mice on day -1. On day 0 mice were injected with PBS alone or with TH2 cells derived from D011.10 mice as indicated ( $1 \times 10^7$ ). The mice were immunized with OVA/alum on day 1 as indicated, followed by boost and challenge as described in Figure 2. Lung sections from OVA/alum primed mice were prepared and stained with anti-YM1/2. Images from a representative mouse from each group are shown at 40X or 100X as indicated (Arrows show YM1/2+ cells in the 100X image).

**Additional file 3: Figure S3 Increased expression of Mac3 in IL-4-treated macrophages.** BMM were prepared from IL-4R $\alpha$ <sup>+/+</sup> mice as described in Materials and Methods. The macrophages were cultured in the presence or absence of IL-4 (10 ng/ml) as indicated for 48 h. BMM were stained for Mac3 expression and analyzed by FACS.

#### List of abbreviations

AAM: alternatively-activated macrophages; AHR: airway hyperresponsiveness; BAL: bronchoalveolar lavage; BMM: bone marrow derived macrophage; CAM: classically activated macrophages; CCL2: CC chemokine ligand 2; CCL11: CC chemokine ligand 11 (eotaxin-1); CCL24: CC chemokine ligand 24 (eotaxin-2); CCR3: CC chemokine receptor 3; FACS: fluorescence-activated cell sorting;  $\gamma$ C: common gamma chain; IL-4: interleukin-4; IL-13: interleukin-13; IL-4R $\alpha$ : interleukin-4 receptor alpha chain; iNOS: inducible nitric oxide synthase; IRS-2: insulin receptor substrate-2; LPS: lipopolysaccharide; MIP-1 $\beta$ : macrophage inflammatory protein-1beta; MNG: multinucleated giant cells; OVA: ovalbumin; PBS: phosphate-buffered saline; RT-PCR: RealTime PCR; PI-3K: phosphoinositide-3 kinase; RANTES: regulated on activation normal T-cell expressed and secreted; STAT6: signal transducer and activator of transcription 6; TARC: thymus- and activation-regulated chemokine; Tg: transgenic; TH2: T-helper 2; WT: wildtype.

#### Acknowledgements

This work was supported by PHS grant AI038985 (ADK) and T32HL007698 (AQF). This work was submitted in partial fulfillment of the requirements for the Doctor of Philosophy degree, Immunology Program, Institute for Biomedical Sciences of the Columbian School of Arts and Sciences, The George Washington University. We would like to acknowledge Ms. Xiulan Qi for excellent technical assistance, Ms. Nicolas Dorsey and Dr. Mark Williams for assistance with FlowJo analysis, and Drs. Nicola M. Heller, Jose L. Moreno, and Stefanie Vogel for helpful discussions during the course of this work.

#### Author details

<sup>1</sup>Center for Vascular and Inflammatory Diseases, University of Maryland, Baltimore, 800 W. Baltimore St., Baltimore MD 21201, USA. <sup>2</sup>Marlene and Stewart Greenebaum Cancer Center and Dept of Microbiology & Immunology, University of Maryland School of Medicine, Baltimore MD 21201, USA. <sup>3</sup>Department of Biological Sciences, University of Maryland College Park, Rockville MD 20892, USA.

#### Authors' contributions

AQF and PD performed the experiments, analyzed the data, prepared the figures, and assisted with the preparation of the manuscript. EPS prepared the paraffin blocks and performed the immunohistochemistry and immunofluorescence staining. IM performed the immunofluorescence analysis, obtained the images, prepared the figure, and assisted with the preparation of the manuscript. NNT assisted in the design and execution of the experiments, and assisted with the preparation of the manuscript. ADK conceived and designed the study, assisted with the execution of the experiments, and wrote the manuscript. The authors have no competing interests to declare.

Received: 30 September 2011 Accepted: 31 January 2012  
Published: 31 January 2012

#### References

- Holt PG, Cacaubas C, Stumbles PA, Sly PD: **The role of allergy in the development of asthma.** *Nature supplement* 1999, **402**:B12-B17.
- Busse WW, Rosenwasser LJ: **Mechanisms of asthma.** *J Allergy Clin Immunol* 2003, **111**:5799-5804.
- Holgate ST, Davies DE: **2009. Rethinking the pathogenesis of asthma.** *Immunity* 2009, **31**:362-367.
- Kuperman D, Schofield B, Wills-Karp M, Grusby MJ: **STAT6-deficient mice are protected from antigen-induced airway hyperresponsiveness and mucus production.** *J Exp Med* 1998, **187**:939-945.
- Corry DB, Grunig G, Hadeiba H, Kurup VP, Warnock ML, Sheppard D, Rennick DM, Locksley RM: **Requirements for allergen-induced airway hyperactivity in T and B cell-deficient mice.** *Mol Med* 1998, **4**:344-355.
- Cohn L, Homer RJ, Marinov A, Rankin J, Bottomly K: **Induction of airway mucus production by TH2 cells: A critical role for IL-4 in cell recruitment but not mucus production.** *J Exp Med* 1997, **186**:1737-1747.
- Grunig G, Warnock M, Wakil AE, Venkayya R, Brombacher F, Rennick DM, Sheppard D, Mohrs M, Donaldson DD, Locksley RM, Corry DB: **Requirement for IL-13 independently of IL-4 in experimental asthma.** *Science* 1998, **282**:2261-2263.
- Wills-Karp M, Luyimbazi J, Xu X, Schofield B, Neben TY, Karp CL, Donaldson DD: **IL-13: Central mediator of allergic asthma.** *Science* 1998, **282**:2258-2261.
- Akimoto T, Numata F, Tamura M, Takata Y, Higashida N, Takashi T, Takeda K, Akira S: **Abrogation of bronchial eosinophilic inflammation and airway hyperactivity in STAT6 deficient mice.** *J Exp Med* 1998, **187**:1537-1542.
- Miyata S, Matsuyama T, Kodama T, Nishioka Y, Kuribayashi K, Takeda K, Akira S, Sugita M: **STAT6 deficiency in a mouse model of allergen-induced airway inflammation abolishes eosinophilia, but induced infiltration of CD8+ cells.** *Clin Exp Allergy* 1999, **29**:114-123.
- Cohn L, Homer RJ, MacLeod H, Mohrs M, Brombacher F, Bottomly K: **Th2-induced airway mucus production is dependent on IL-4R $\alpha$ , but not on eosinophils.** *J Immunol* 1999, **162**:6178-6183.
- Gavett SH, O'Hearn DJ, Karp CL, Patel EA, Schofield BH, Finkelman FD, Wills-Karp M: **Interleukin-4 receptor blockade prevents airway responses induced by antigen challenge in mice.** *Am J Physiol* 1997, **272**:L253-L261.
- Finkelman FD, Hogan SP, Hershey GK, Rothenberg ME, Wills-Karp M: **Importance of cytokines in murine allergic airway disease and human asthma.** *J Immunol* 2010, **184**:1663-1674.
- Rankin JA, Picarella DE, Geba GP, Temann UA, Prasad B, DiCosmo B, Tarallo A, Stripp B, Whitsett J, Flavell RA: **Phenotypic and physiologic characterization of transgenic mice expressing interleukin 4 in the lung: lymphocytic and eosinophilic inflammation without airway hyperactivity.** *Proc Natl Acad Sci USA* 1996, **93**:7821-7825.
- Zhu Z, Homer RJ, Wang Z, Chen Q, Geba GP, Wang J, Zhang Y, Elias JA: **Pulmonary expression of interleukin-13 causes inflammation, mucus hypersecretion, subepithelial fibrosis, physiologic abnormalities, and eotaxin production.** *J Clin Invest* 1999, **103**:779-788.
- Kelly-Welch AE, Melo MEF, Ford A, Noben-Trauth N, Smith E, Haudenschild C, Keegan AD: **Complex Role of the IL-4R $\alpha$  in a murine model of airway inflammation: Expression of the IL-4R $\alpha$  on a non-lymphocytic cell of hematopoietic origin contributes to severity of inflammation.** *J Immunol* 2004, **172**:4545-4555.
- Mosser DM: **The many faces of macrophage activation.** *J Leukoc Biol* 2003, **73**:209-212.
- Anthony RM, Rutitzky LI, Urban JF Jr, Stadecker MJ, Gause WC: **Protective immune mechanisms in helminth infection.** *Nature Rev Immunol* 2007, **7**:975-987.
- Martinez FO, Helming L, Gordon S: **Alternative activation of macrophages: An immunologic functional perspective.** *Annual Rev Immunol* 2009, **27**:451-483.
- Gordon S, Martinez FO: **Alternative activation of macrophages: Mechanism and function.** *Immunity* 2010, **32**:593-604.
- Chensue SW, Terebuh PD, Warmingington KS, Hershey SD, Evanoff HL, Kunkel SL, Higashi GI: **Role of IL-4 and IFN $\gamma$  in Schistosoma mansoni egg-induced hypersensitivity granuloma formation: orchestration, relative contribution, and relationship to macrophage function.** *J Immunol* 1992, **148**:900-914.
- Stein M, Keshav S, Harris N, Gordon S: **IL-4 potently enhances murine macrophage mannose receptor activity: a marker of alternative immunologic macrophage activation.** *J Exp Med* 1992, **176**:287-292.



23. Modolell M, Corraliza IM, Link F, Soler G, Eichmann K: **Reciprocal regulation of the nitric oxide synthase/arginase balance in mouse bone-marrow-derived macrophages by TH1 and TH2 cytokines.** *Eur J Immunol* 1995, **25**:1101-1109.
24. Raes G, De Baetseller P, Noel W, Beschin A, Brombacher F, Hassanzadeh G: **Differential expression of FIZZ1 and YM1 in alternatively versus classically activated macrophages.** *J Leukocyte Biol* 2002, **71**:597-602.
25. Loke P, Nair MG, Parkinson J, Guilano D, Blaxter M, Allen JE: **IL-4 dependent alternatively activated macrophages have a distinct in vivo gene expression phenotype.** *BMC Immunol* 2002, **3**:7-17.
26. Nair MG, Cochrane DW, Allen JE: **Macrophages in chronic type 2 inflammation have a novel phenotype characterized by the abundant expression of YM1 and FIZZ1 that can be partly replicated in vivo.** *Immunol Lett* 2003, **85**:173-177.
27. Sandler NG, Mentink-Kane MM, Cheever AW, Wynn TA: **Global gene expression profiles during acute pathogen-induced pulmonary inflammation reveal divergent roles for Th1 and Th2 responses in tissue repair.** *J Immunol* 2003, **171**:3655-3667.
28. Murray PJ, Wynn TA: **Obstacles and opportunities for understanding macrophage polarization.** *J Leuk Biol* 2010, **89**:557-563.
29. Watanabe K, Jose PJ, Rankin SM: **Eotaxin-2 generation is differentially regulated by LPS and IL-4 in monocytes and macrophages.** *J Immunol* 2002, **168**:1911-1918.
30. McNally AK, Anderson JM: **Interleukin-4 induces foreign body giant cells from human monocytes/macrophages. Differential lymphokine regulation of macrophage fusion leads to morphological variants of multinucleated giant cells.** *Am J Pathol* 1995, **147**:1487-1499.
31. Anderson JM: **Multinucleated giant cells.** *Curr Opin Hematol* 2000, **7**(1):40-47.
32. Anthony RM, Urban JF Jr, Alem F, Hamed HA, Rozo CT, Boucher JL, Van Rooijen N, Gause WC: **Memory TH2 cells induce alternatively activated macrophages to mediate protection against nematode parasites.** *Nature Med* 2006, **12**:955-960.
33. Hesse M, Modolell M, La Flamme AC, Schito M, Fuentes JM, Cheever AW, Pearce EJ, Wynn TA: **Differential regulation of nitric oxide synthase-2 and arginase-1 by type1/type 2 cytokines in vivo: granulomatous pathology is shaped by the pattern of L- arginine metabolism.** *J Immunol* 2001, **167**(11):6533-6544.
34. Voehringer D, van Rooijen N, Locksley RM: **Eosinophils develop in distinct stages and are recruited to peripheral sites by alternatively activated macrophages.** *J Leukoc Biol* 2007, **81**(6):1434-1444.
35. Kim EY, Battaile JT, Patel AC, You Y, Agapov E, Holtzman MJ: **Persistent activation of an innate immune response translates respiratory viral infection into chronic lung disease.** *Nat Med* 2008, **14**:633-640.
36. Brombacher F, Arendse B, Peterson R, Holscher A, Holscher C: **Analyzing classical and alternative macrophage activation in macrophage/neutrophil-specific IL-4R $\alpha$ -deficient mice.** *Methods Mol Biol* 2009, **531**:225-252.
37. Kurowska-Stolarska M, Stolarski B, Kewin P, Murphy G, Corrigan CJ, Ying S, Pitman N, Mirchandani A, Rana B, van Rooijen N, Shepherd M, McSharry C, McInnes IB, Xu D, Liew FY: **IL-33 amplifies the polarization of alternatively activated macrophages that contribute to airway inflammation.** *J Immunol* 2009, **183**:6469-6477.
38. Melgert BN, Postma DS, Kuipers I, Geerlings M, Luinge MA, Hylkema MN: **Female mice are more susceptible to the development of allergic airway inflammation than male mice.** *Clin Exp Allergy* 2005, **35**:1496-1503.
39. Melgert BN, Oriss TB, Qi Z, Dixon-McCarthy B, Geerlings M, Hylkema MN, Ray A: **Macrophages. Regulators of sex differences in asthma?** *Am J Respir Cell Mol Biol* 2009, **42**:595-603.
40. Subrata LS, Bizzintino J, Mamessier E, Bosco A, McKenna KL, Wikstrom ME: **Interactions between innate antiviral and atopic immunoinflammatory pathways precipitate and sustain asthma exacerbations in children.** *J Immunol* 2009, **178**:5305-5311.
41. Holt PG, Strickland DH: **Interactions between innate and adaptive immunity in asthma pathogenesis: New perspectives from studies on acute exacerbations.** *J Allergy Clin Immunol* 2010, **125**:963-972.
42. Melgert BN, Hacken NH, Rutgers B, Timens W, Postma DS, Hylkema MN: **More alternative activation of macrophages in lungs of asthmatic patients.** *J Allergy Clin Immunol* 2011, **127**:831-833.
43. Viksman MY, Bochner BS, Peebles RS, Schleimer RP, Liu MC: **Expression of activation markers on alveolar macrophages in allergic asthmatics after endobronchial or whole-lung allergen challenge.** *Clin Immunol* 2002, **104**:77-85.
44. Chupp GL, Lee CG, Jarjour N, Shim YM, Holm CT, He S, Dziura JD, Reed J, Coyle AJ, Kiener P, Cullen M, Grandsaigne M, Dombret MC, Aubier M, Pretolani M, Elias JA: **A chitinase-like protein in the lung and circulation of patients with severe asthma.** *N Engl J Med* 2007, **357**:2016-2027.
45. Ober C, Tan Z, Sun Y, Possick JD, Pan L, Nicolae R, Radford S, Parry RR, Heinzmann A, Deichmann KA, Lester LA, Gern JE, Lemanske RF Jr, Nicolae DL, Elias JA, Chupp GL: **Effect of variation in CH13L1 on serum YKL-40 level, risk of asthma, and lung function.** *N Engl J Med* 2008, **358**:1682-1691.
46. Shuhui L, Mok Y, Wong WSF: **Role of Mammalian Chitinases in Asthma.** *Int Arch Allergy Immunol* 2009, **149**:369-377.
47. Sutherland TE, Maizels RM, Allen JE: **Chitinases and chitinase-like proteins: potential therapeutic targets for the treatment of T-helper type 2 allergies.** *Clin Exp Allergy* 2009, **39**:943-955.
48. Lee CG: **Chitin, chitinases, and chitinase-like proteins in allergic inflammation and tissue remodeling.** *Yonsei Med J* 2009, **50**:22-30.
49. Ober C, Chupp GL: **The chitinase-like proteins: A review of genetic and functional studies in asthma and immune-mediated diseases.** *Curr Opin Allergy Clin Immunol* 2009, **9**:401-408.
50. Noben-Trauth N, Shultz LD, Brombacher F, Urban JF Jr, Gu H, Paul WE: **An IL-4-independent pathway for CD4+ T cell IL-4 production is revealed in IL-4 receptor-deficient mice.** *Proc Natl Acad Sci USA* 1997, **94**:10838-10843.
51. Dasgupta P, Chapoval SP, Smith EP, Keegan AD: **Transfer of in vivo primed transgenic T cells supports allergic lung inflammation and FIZZ1 and Ym1 production in an IL-4R $\alpha$  and STAT6 dependent manner.** *BMC Immunol* 2011, **12**:60.
52. Chapoval SP, Dasgupta P, Smith EP, DeTolla LJ, Lipsky MM, Kelly-Welch AE, Keegan AD: **STAT6 expression in multiple cell types mediates the cooperative development of allergic airway disease.** *J Immunol* 2011, **86**:2571-2583.
53. Chapoval SP, Lee CG, Tang C, Keegan AD, Cohn L, Bottomly K, Elias JA: **Lung vascular endothelial growth factor expression induces local myeloid dendritic cell maturation.** *Clinical Immunology* 2009, **132**(3):371-384.
54. Sunderkötter C, Nikolic T, Dillon MJ, Van Rooijen N, Stehling M, Drevets DA, Leenen PJ: **Subpopulations of mouse blood monocytes differ in maturation stage and inflammatory response.** *J Immunol* 2004, **172**(7):4410-4417.
55. Heller NM, Qi X, Juntilla I, Shirey KA, Vogel SN, Paul WE, Keegan AD: **Type 1 IL-4 Receptors Selectively Activate IRS-2 to Induce Target Gene Expression in Macrophages.** *Sci Signal* 2008, **1**:51, ra17.
56. Kuperman DA, Huang X, Koth LL, Chang GH, Dolganov GM, Zhu Z, Elias JA, Sheppard D, Erle DJ: **Direct effects of interleukin-13 on epithelial cells cause airway hyperreactivity and mucus overproduction in asthma.** *Nat Med* 2002, **8**:885-890.
57. Venkayya R, Lam M, Willkom M, Grunig G, Corry DB, Erle DJ: **The Th2 lymphocyte products IL-4 and IL-13 rapidly induce airway hyperresponsiveness through direct effects on resident airway cells.** *Am J Respir Cell Mol Biol* 2002, **26**:202-212.
58. Marsland BJ, Kurrer M, Reissmann R, Harris NL, Kopf M: ***Nippostrongylus brasiliensis* infection leads to the development of empysema associated with the induction of alternatively activated macrophages.** *Eur J Immunol* 2008, **38**:479-488.
59. Jenkins SL, Ruckerl D, Cook PC, Jones LH, Finkelman FD, van Rooijen N, MacDonald AS, Allen JE: **Local macrophage proliferation, rather than recruitment from the blood, is a signature of TH2 inflammation.** *Science* 2011, **332**:1284-1288.
60. Niese KA, Collier AR, Hajek AR, Cederbaum SD, O'Brien WE, Wills-Karp M, Rothenberg ME, Zimmermann N: **Bone marrow cell derived arginase 1 is the major source of allergen-induced lung arginase but is not required for airway hyperresponsiveness, remodeling and lung inflammatory responses in mice.** *BMC Immunol* 2009, **10**:33-38.
61. Lee CG, Hartl D, Lee GR, Koller B, Matsuura H, Da Silva CA, Sohn MH, Cohn L, Homer RJ, Kozhich AA, Humbles A, Kearley J, Coyle A, Chupp G, Reed J, Flavell RA, Elias JA: **Role of breast regression protein 39 (BRP-39)/chitinase 3-like-1 in Th2 and IL-13-induced tissue responses and apoptosis.** *J Exp Med* 2009, **206**:1149-1166.
62. Cai Y, Kumar RK, Zhou J, Foster PS, Webb DC: **Ym1/2 promotes Th2 cytokine expression by inhibiting 12/15(S)-Lipoxygenase: Identification**

- of a novel pathway for regulating allergic inflammation. *J Immunol* 2009, **182**:5393-5399.
63. Medoff BD, Seung E, Hong S, Thomas SY, Erle DJ, Luster AD: **CD11b + myeloid cells are the key mediators of Th2 cell homing into the airway in allergic inflammation.** *J Immunol* 2009, **182**:623-635.
64. Newcomb DC, Zhou W, Moore ML, Goleniewska K, Hershey GK, Kolls JK, Peebles RS Jr: **A functional IL-13 receptor is expressed on polarized murine CD4+ Th17 cells and IL-13 signaling attenuates Th17 cytokine production.** *J Immunol* 2009, **182**:5317-5321.
65. Brightling C, Berry M, Amrani Y: **Targeting TNF $\alpha$ : A novel therapeutic approach for asthma.** *Clin Rev Allergy Immunol* 2008, **12**:1-10.
66. Weng M, Huntly D, Huang I, Foye-Jackson O, Wang L, Sarkissian A, Zhou Q, Walker WA, Cherayil BJ, Ning-Shi H: **Alternatively activated macrophages in intestinal helminth infection: Effects on concurrent bacterial colitis.** *J Immunol* 2007, **179**:4721-4731.
67. Stout D, Jiang C, Matta B, Tietzel I, Watkins SK, Suttles J: **Macrophages sequentially change their functional phenotype in response to changes in microenvironmental influences.** *J Immunol* 2005, **175**:342-349.

doi:10.1186/1471-2172-13-6

**Cite this article as:** Ford et al.: Adoptive transfer of IL-4R $\alpha$ <sup>+</sup> macrophages is sufficient to enhance eosinophilic inflammation in a mouse model of allergic lung inflammation. *BMC Immunology* 2012, **13**:6.

**Submit your next manuscript to BioMed Central  
and take full advantage of:**

- Convenient online submission
- Thorough peer review
- No space constraints or color figure charges
- Immediate publication on acceptance
- Inclusion in PubMed, CAS, Scopus and Google Scholar
- Research which is freely available for redistribution

Submit your manuscript at  
[www.biomedcentral.com/submit](http://www.biomedcentral.com/submit)

