

Research article

Open Access

## Analysis of the conservation of synteny between *Fugu* and human chromosome 12

Alexandre Montpetit<sup>1,2</sup>, Michael D Wilson<sup>4</sup>, Mario Chevrette<sup>5</sup>, Ben F Koop<sup>4</sup> and Daniel Sinnett\*<sup>1,2,3</sup>

Address: <sup>1</sup>Division of Hematology-Oncology, Charles-Bruneau Cancer Center, Research Center, Sainte-Justine Hospital, 3175 Côte Ste-Catherine, Montreal, QC, H3T 1C5, Canada, <sup>2</sup>Department of Biochemistry, University of Montreal, Montreal, QC, Canada, <sup>3</sup>Department of Pediatrics, University of Montreal, Montreal, QC, Canada, <sup>4</sup>Centre for Biomedical Research, University of Victoria, Victoria, BC, V8W 2Y2, Canada and <sup>5</sup>The Research Institute of the McGill University Health Centre and Department of Surgery, McGill University, Montreal, QC, H3G 1A4, Canada

Email: Alexandre Montpetit - alexandre.montpetit@mail.mcgill.ca; Michael D Wilson - mdwilson@uvic.ca; Mario Chevrette - mchevr@po-box.mcgill.ca; Ben F Koop - bkoop@uvic.ca; Daniel Sinnett\* - daniel.sinnett@umontreal.ca

\* Corresponding author

Published: 23 July 2003

Received: 28 May 2003

BMC Genomics 2003, 4:30

Accepted: 23 July 2003

This article is available from: <http://www.biomedcentral.com/1471-2164/4/30>

© 2003 Montpetit et al; licensee BioMed Central Ltd. This is an Open Access article: verbatim copying and redistribution of this article are permitted in all media for any purpose, provided this notice is preserved along with the article's original URL.

### Abstract

**Background:** The pufferfish *Fugu rubripes* (*Fugu*) with its compact genome is increasingly recognized as an important vertebrate model for comparative genomic studies. In particular, large regions of conserved synteny between human and *Fugu* genomes indicate its utility to identify disease-causing genes. The human chromosome 12p12 is frequently deleted in various hematological malignancies and solid tumors, but the actual tumor suppressor gene remains unidentified.

**Results:** We investigated approximately 200 kb of the genomic region surrounding the *ETV6* locus in *Fugu* (*fETV6*) in order to find conserved functional features, such as genes or regulatory regions, that could give insight into the nature of the genes targeted by deletions in human cancer cells. Seven genes were identified near the *fETV6* locus. We found that the synteny with human chromosome 12 was conserved, but extensive genomic rearrangements occurred between the *Fugu* and human *ETV6* loci.

**Conclusion:** This comparative analysis led to the identification of previously uncharacterized genes in the human genome and some potentially important regulatory sequences as well. This is a good indication that the analysis of the compact *Fugu* genome will be valuable to identify functional features that have been conserved throughout the evolution of vertebrates.

### Background

The short arm of chromosome 12 is frequently deleted in a wide variety of hematological malignancies [1,2] (as well as in certain solid tumours including breast, lung, ovarian, and prostate carcinomas (reviewed in Aissani *et al.* [3]). Loss of heterozygosity studies revealed hemizygous deletions of chromosome 12p12 in 26 to 47 % of pre-B acute lymphoblastic leukemia (ALL) cases,

making it one of the most common genetic alterations found in this disease [4–6]. The frequent loss of genetic material in tumour cells is usually indicative of the inactivation of tumour suppressor genes. The construction of both high-resolution genetic and physical maps led to the delineation of the shortest commonly deleted region in ALL patients. This 1 Mb interval is flanked by the genes *ETV6* and *CDKN1B* [4,7,8] that encode a member of the

ets-like family of transcription factor (reviewed in Rubnitz *et al.* [9]) and a cyclin-dependent kinase inhibitor [10,11], respectively. Eight other genes have been mapped within this region: LRP6, encodes a member of the LDL receptor family; *GPR19* is a gene encoding the G-protein coupled receptor 19; CREBL2 encodes Cre binding protein-like 2; BCL-G is a new member of the BCL-2 family that possess proapoptotic activity; MKP-7 is a new member of the dual-specificity ser/thr and tyr phosphatase; as well as three previously uncharacterized genes, LOH1CR12, LOH2CR12 and LOH3CR12 with unknown functions [12].

The pufferfish *Fugu rubripes* (*Fugu*) is a vertebrate model for comparative genome analysis because of its 400 Mb compact genome [13]. The *Fugu* genome is about eight times smaller than its human counterpart, but has a similar gene set both in terms of total number and structure. Only 3 % of the human genome is coding, compared to nearly 20 % for *Fugu*, which greatly facilitates gene identification and cloning. *Fugu* has been successfully used to characterize functional protein domains [14,15] as well as putative regulatory elements [16–18]. If substantial linkage and synteny are conserved, *Fugu* genome could be a very useful tool for transcriptional unit mapping and comparative positional cloning of human homologous genes [19–21]. Indeed, many reports present evidence of gene order conservation (synteny) over relatively long stretches of sequence between human and *Fugu* indicating that *Fugu* could be used to identify new genes (reviewed in Venkatesh *et al.* [22]). However, other reports showed considerable differences in the order of the genes in some regions between these two species and gave rise to a controversy on the potential of *Fugu* as a model organism for positional cloning (e.g. Gilley and Fried [23]). So far too few loci have been analysed to give an actual view of the extent of conserved synteny and conserved gene order between *Fugu* and human genomes (e.g. Smith *et al.* [24]).

In the present study, we wanted to characterize the *Fugu* *ETV6* (*fETV6*) locus in order to identify genes that might have been missed previously in the human putative tumor suppressor locus. We characterized approximately 200 kb of genomic sequences around the *fETV6* locus. We identified seven genes, including three uncharacterized genes in the human genome and some potentially important regulatory sequences. However, although some synteny with chromosome 12 was conserved, extensive genomic rearrangements have occurred between the *Fugu* and human *ETV6* loci. These observations raise important questions on the usefulness of *Fugu* as a model for disease gene cloning.

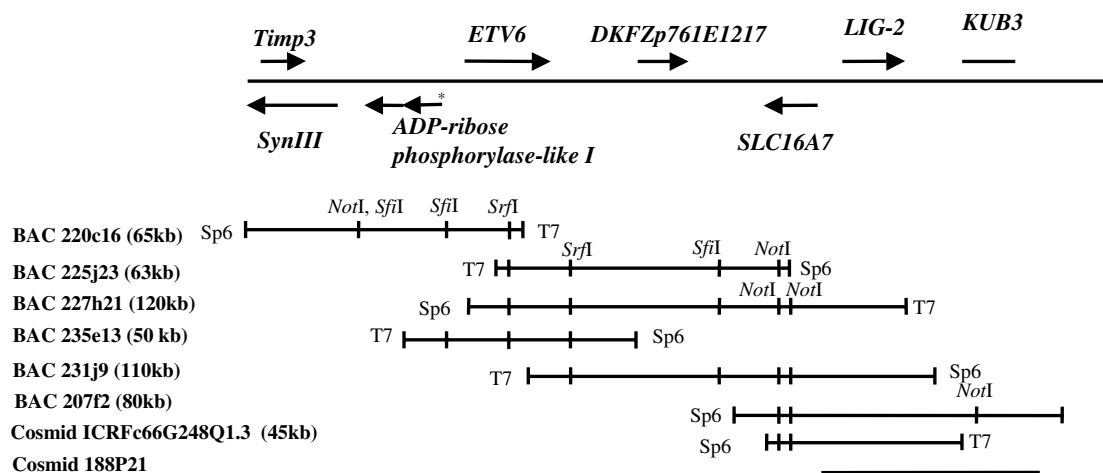
## Results

We previously isolated *Fugu* genomic clones that encompassed the *fETV6* gene [25]. To characterize the genomic regions surrounding the *fETV6* locus, 8 overlapping clones extended toward the 3' of *fETV6* were mapped by Southern blot hybridizations. The resulting physical map covering approximately 200 kb is shown in Fig. 1. To delineate the physical relationship between the human and the *fETV6* loci, we sequenced two contiguous but non-overlapping *Fugu* BAC clones 220c16 (approximately 65 kb) and 231j9 (approximately 110 kb) using a shotgun cloning strategy. 506 sequence reads corresponding to more than 400 kb were assembled into 87 contigs using DNASTar software. About 60 kb of sequence, from 22 contigs, were obtained for BAC 220c16 (GenBank acc. no. AY339212) and 95 kb of sequence, from 65 contigs, were obtained for BAC 231j9 (GenBank acc. no. AY339213). Most contigs could be precisely assembled using the *ETV6* genomic sequence (GenBank acc. no. AF340230) and shotgun reads from the cosmid clone 188P21 characterized as part as the *Fugu* genome project ([26]; see Fig 1). After assembly, we found that both BAC clones ended at a common *HindIII* site used for cloning.

### Sequence analysis of the *fETV6* locus

The NIX integrated resource was used to predict the presence of 8 putative coding sequences in the 155 kb of sequence. Blast analysis of the sequence revealed homology to several known or hypothetical proteins in addition to *ETV6* (Table 1). From the Sp6 end of the BAC 220c16 (see Fig.1) the gene order is: Tissue inhibitor of metalloproteinase 3 (*Timp3*), Synapsin III (*SynIII*), hypothetical gene similar to FLJ22693 and chromosome 12 open reading frame gene 6 (*C12ORF6*), *fETV6*, *DKFZp761E1217*, Solute carrier family 16, member 7 (*SLC16A7*), *Lig-2* as well as Ku-70-binding protein 3 (*KUB3*). With the exception of *KUB3*, the transcription orientation could be inferred (Fig 1). The human homologues of 5 of the 8 genes mapped to human chromosome 12. Most *Fugu* genes show high sequence similarity to their known human orthologues (Table 1). The number of exons and the intron/exon organization are well conserved between the 2 species (data not shown).

We found strong sequence identity to the genes *SynIII* and *Timp3* within the genomic sequences derived from the BAC 220c16 (Table 1), although only the first 5 exons of *SynIII* and the last 4 exons of *Timp3* were present in this clone. As in human, *Timp3* is located within the fifth intron of *SynIII* on the opposite strand [27]. Of note, the *Drosophila* homologues for the *Timp* and *Syn* genes are organized in the same way [27]. Because both genes map to human chromosome 22, we wanted to gain more insight in the evolution of this locus by studying the genome organisation of zebrafish, another teleost fish. We



**Figure 1**

Physical map of the *Fugu ETV6* locus. The direction of transcription of the identified genes, when known, is indicated with an arrow. BACs and cosmids used in this study are indicated under the physical map. The approximate sizes of the inserts are indicated in parentheses. The position of the Sp6 and T7 extremities of the clones and the presence of *NotI*, *SfiI* and *SrfI* restriction sites are also indicated. The asterisk (\*) indicates a putatively non-functional copy of the *ADP-ribose polymerase-like I* gene.

mapped the *ETV6* gene using a zebrafish radiation hybrid panel between the markers Z1366 and Z21743 on the zebrafish LG4 chromosome (data not shown). Z21743 was identified as *SynII*, but a closer inspection revealed similar identity (88 % vs 85 %) to *SynIII* at the protein level suggesting that this marker might indeed be *Syn III*, thus indicating that *ETV6* and *SynIII* are syntenic in zebrafish and *Fugu*, but not in human.

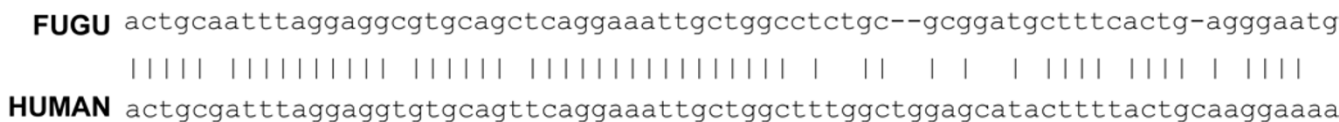
Immediately upstream of *fSynIII*, on the same strand, we identified a *Fugu* homolog of the human gene *FLJ22693* (Table 1), encoding a predicted protein that has similarity to the TRF1-interacting ankyrin-related ADP-ribose polymerase, although its actual function is unknown. Blast analysis revealed 3 human genomic clones

(AC004961, AC004849 and AC025816), all mapping to chromosome 7q33-35, that contained the hypothetical gene *FLJ22693*. This locus seems to have been involved in several rearrangements since at least six partial and two complete copies of this gene are present, although only one could encode a functional protein. Because of the relatively low homology between the human and the *Fugu* genes (47 % identity at the nucleotide level and 38 % identity at the protein level) it is possible that the actual ortholog might be different. For instance, we observed another homolog, *C12ORF6* (Gen Bank acc. no. NM\_020367) with 45% identity at the nucleotide level which lies on chromosome 12p13. However more than 8 Mb of sequence separates *C12ORF6* from *ETV6* on human

**Table 1: Predicted genes found in the *Fugu ETV6* locus**

Gene	Human Homologs (Gen Bank acc.nos.)	% identity (Nucleic acid)	% identity (Amino acid)	Human Chromosomal location <sup>a</sup>
<i>Timp3</i>	NM_00036	81 %	86%	22q13
<i>SynIII</i>	NM_003490	64 %	73%	22q13
<i>ADP-ribose polymerase-like I</i>	FLJ22693 (NM_022750)	47%	38%	7q33-35
	C12ORF6 (NM_020367)	45 %	38%	12p13
<i>ETV6</i>	NM_001987	63 %	58%	12p12
<i>DKFZp761E1217</i>	AL834160	81%	91%	12q14
<i>SLC16A7</i>	NM_004731	68 %	69%	12q14
<i>LIG-2</i>	BC012380	72 %	65%	12q13
<i>KUB3</i>	AF078164	70 %	65%	12q13

<sup>a</sup>All localizations were determined by Blast analysis <http://www.ncbi.nlm.nih.gov/blast> and by using the June 2002 version of the Human Genome Browser <http://genome.ucsc.edu>.



**Figure 2**

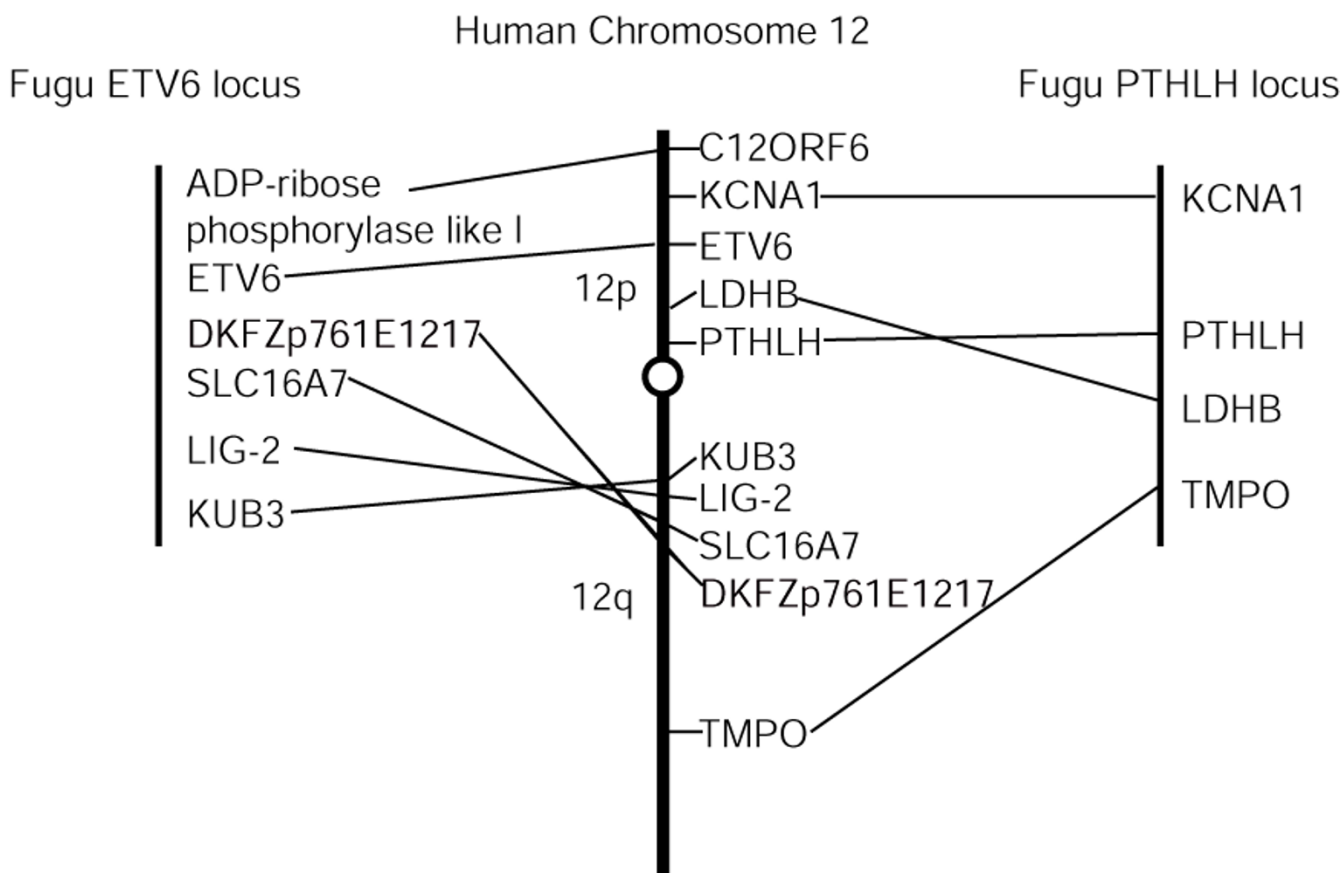
Highly conserved non-coding sequence within a *LIG-2* intron. Vertical bars indicate identical nucleotides. Dashes were introduced to maintain the maximal alignment.

chromosome 12 according to the November 2002 Assembly of the human genome.

The next *Fugu* gene, *DKFZp761E1217*, showed strong sequence identity (81%) to many uncharacterized human mRNAs (data not shown). Its function could not be inferred since no known domains are encoded by this gene. However, the clone with the greatest amino acid identity (91%; GenBank acc.no. AL834160) was located on human chromosome 12 (Table 1, Fig. 1), and is thus probably the actual ortholog. Transcribed in the opposite direction we found the *Fugu* ortholog of *SLC16A7* (solute carrier family 16 member 7) that has 6 exons encoding a monocarboxylic acid transporter that is present on chromosome 12 ([28]). The seventh gene from the left (see Fig. 1) showed significant homology (72 % identity) to a human cDNA (GenBank acc. no. BC012380) (Table 1) encoding a predicted protein with 67% sequence similarity to *LIG-1*, an integral membrane protein, that we named *LIG-2*. We observed a non-coding sequence element, within a *LIG-2* intron, that was extremely conserved between *Fugu* and human (Fig. 2). Although other *LIG-2* homologues were observed in the human genome, this conserved sequence was only conclusively identified on chromosome 12 thus identifying *LIG-2* as the true ortholog of the *Fugu* gene and illustrating that the

observed syntenic relationship could be useful for predicting human orthologs for *Fugu* genes. Finally, the ortholog of *KUB3* gene was identified within the sequencing data released from cosmid 188P21. This gene encodes a member of the Ku70-binding protein family, although its exact function is unknown [29]. Genes *DKFZp761E1217*, *SLC16A7*, *LIG-2* and *KUB3* are located on 12q13-14. The human *LIG-2* and *KUB3* genes are about 200 kb apart according to the November 2002 Assembly of the human genome while *SLC16A7* and *DKFZp761E1217* are each approximately 2 Mb away from any of the other three genes.

If we assume that *C12ORF6* is the actual ortholog of the *Fugu* gene, then synteny with human chromosome 12 is observed with 6 consecutive *Fugu* genes (*ADP-ribose polymerase-like I*, *ETV6*, *DKFZp761E1217*, *SLC16A7*, *LIG-2* and *KUB3*). However gene order is not conserved since many other human genes lie in the chromosome 12 region covered by this *Fugu* contig and many of them can be found in other *Fugu* loci (see Fig. 3). These observations suggest that multiple rearrangements, linkage breaks and gene losses occurred since the two species diverged 430 Myr ago.



**Figure 3**  
 Synteny analysis between *Fugu* and the human chromosome 12. The physical relationship between the genes present near *fETV6* (this study) and *fPTHLH* (see reference 32) loci and their homologues on the human chromosome 12 is indicated with straight lines. Distances between the genes are not to scale. KCNA1: potassium voltage-gated channel, shaker-related sub-family member 1 (NM\_000217); PTHLH: parathyroid hormonal-like hormone (NM\_002820); LDHB: lactate dehydrogenase B (NM\_002300); TMPO: thymopreietin (NM\_003276).

**Discussion**

Conservation of synteny and linkage between distant species is a characteristic that could be integrated in positional cloning strategies. *Fugu* was proposed as a vertebrate model for this purpose since its genome is extremely compact, it shares a similar gene content with humans, and many examples of conserved synteny with human have been documented (reviewed in Venkatesh *et al.* [22]). However, only a few reports could demonstrate that gene order was indeed conserved. That includes the *PAX6* region on chromosome 11p [30] and the Alzheimer disease locus on chromosome 14 [21]. Other reports have shown extensive rearrangements between human and *Fugu* genomic regions, including the surfeit locus [23] and the Hox gene cluster [31]. Additional work is needed to uncover the complete set of conserved syntenies in order

to gain insights into the extent to which gene order has been preserved within syntenic groups.

In this study, we characterized approximately 200 kb of *Fugu* genomic sequence encompassing *fETV6* in order to find new genes that would be associated with the human *ETV6* locus that is frequently rearranged in human malignancies. We found 8 genes from which 6 homologs were located on human chromosome 12 indicating that synteny was to some extent maintained throughout the evolution. However, when taken together with data from another study of *Fugu* homologs on human chromosome 12 [32], it became obvious that many chromosomal inversions have occurred since the divergence of both species 430 Myr ago (Fig. 3). Similar observations were made with other human genes present on the tumor suppressor locus on chromosome 12, including *CDKN1B*, using the

now available complete *Fugu* genomic sequence (data not shown; [33]). Our data are consistent with others suggesting that at least some regions of the *Fugu* genomes underwent substantial intrachromosomal rearrangements over evolution [22–24,26,34,35]. The presence of conserved synteny but lack of gene linkage are in line with the hypothesis that inversions were more prevalent than translocations in the evolution of fish genomes (e.g. Postlethwait *et al.* [36]). In this regard, computer simulation showed that between 4000 to 16000 chromosomal rearrangements occurred since the divergence between *Fugu* and human, which is a much greater rate than the 180 rearrangements predicted between human and mouse, even when normalized for the divergence time [37]. One plausible explanation is that when the bony fish lineage underwent a complete genome duplication it has been followed by differential gene loss. As many as 80 % of these duplicated genes were selectively lost [38–40]. This mechanism should in principle maintain synteny but not absolute gene order, which is what we observed. Noteworthy, the genes *ETV6* and *SynIII* that lie on two different human chromosomes are on the same linkage group in both *Fugu* and zebrafish. This would indicate that the observed chromosomal rearrangement is not specific to *Fugu* but rather generalized in teleost lineages, thus making these fishes a less suitable model for positional cloning of human genes.

On the other hand, our findings support the notion that *Fugu* genome is suitable to confirm gene and find putative regulatory domains in the human genomes [41]. The characterization of both coding and non-coding sequences allowed the identification of regions of synteny, thus providing tools to distinguish the actual orthologs from other homologs. In this study, by characterizing a short region of 200 kb in *Fugu*, the genomic structure of three uncharacterized genes (*LIG-2*, *ADP-ribose polymerase-like 1* and *DKFZp761E1217*) in human have been determined using the *Fugu* sequence (data not shown), indicating the importance of this model. Furthermore, one conserved non-coding sequence was identified within a *LIG-2* intron (this study) and another one in an *ETV6* intron [25]. These sequences are more conserved than the actual coding sequence indicating a putative functional significance. These sequences may act as transcriptional enhancers (e.g. Muller *et al.* [42]), although other experiments will be needed to prove it. All these characteristics show that the *Fugu* genome is a powerful tool to characterize the human genome. Thus, in addition to its importance in understanding vertebrate evolution, the availability of a complete pufferfish genome sequence [33] will also be of great importance for the annotation and characterization of the human genome.

## Conclusions

This comparative analysis led to the identification of previously uncharacterized genes in the human genome and some potentially important regulatory sequences as well. This is a good indication that the analysis of the compact *Fugu* genome will be valuable to identify functional features that have been conserved throughout the evolution of vertebrates.

## Methods

### Isolation of BAC clones

Two gridded genomic *Fugu* libraries, a cosmid library 66 in Lawrist 4 (constructed by C. Burgdorf and distributed by RZPD, Berlin, Germany) and a BAC library cloned in pBeloBAC11 (obtained from Genome Systems) were screened at low stringency with a human *ETV6* cDNA probe as described in Montpetit and Sinnott [25]. Four overlapping BAC clones, 220c16, 225j23, 227h21 and 235e13, were obtained. To construct a physical map, the genomic *Fugu* clones were digested with various endonucleases (*NotI*, *SfiI* and *SrfI*) followed by Southern hybridization with T7, Sp6 and *ETV6*-derived probes. To extend the contig toward the T7 extremity of the BAC 227h21, the sequence information generated from this end was used to design specific PCR primers (227T7F: AAGCTTGGATCTGGGTCCGTC and 227T7R: GTCCTTTCATTCACCACAG) that amplified a 200 bp fragment. The latter was used as a probe to rehybridize both *Fugu* genomic libraries. This led to the identification of three new overlapping clones, one cosmid (ICRFc66G248Q1.3) and 2 BACs (207f2 and 231j9).

### Large-scale DNA sequencing

The BACs 220c16 and 231j9 were sequenced to 3.1 and 2.2 fold redundancy, respectively, using a shotgun strategy as described in Wilson *et al.* [43]. Briefly, the clones were isolated using NucleoBond Plasmid Maxi Kits (Clontech) and randomly sheared by nebulization. Blunt ends were assured using mung bean nuclease, Klenow fragment and DNA polymerase I and fragments from 1.5 to 3 kb were size-fractionated by agarose gel electrophoresis. Fragments were ligated into *SmaI*-digested M13mp9 vector and single-stranded templates were purified using Qiagen M13 plates. Random clones from each sub-library were sequenced using dye-terminator and dye-primer chemistry (Amersham and ABI) using either ABI 373 or 377 automated DNA sequencers.

### Sequence analysis

DNASar software was used for gel trace analysis, contig assembly and to obtain global alignments of genomic data. Repeat elements were identified using RepeatMasker2 <http://ftp.genome.washington.edu/cgi-bin/RepeatMasker>. NIX package software <http://www.hgmp.mrc.ac.uk/NIX>, which integrates several dif-

ferent algorithms for exon prediction (FGenes, Genescan, Grail, Hexon, etc.) and Blast analysis (Swissprot, dbEST, Unigene, etc.) was used to identify the putative genes. All other sequence analyses were performed using BLAST or CD-Search programs on the NCBI site <http://www.ncbi.nlm.nih.gov>. Sequence from clone 188P21 was available from the *Fugu* sequencing project <http://Fugu.hgmp.mrc.ac.uk/>. Multiple sequence alignments were obtained using the ClustalW algorithm. The physical position of human genes was obtained using the November 2002 version of the Human Genome Browser <http://genome.ucsc.edu>.

### Zebrafish radiation hybrid mapping

The LN54 zebrafish radiation hybrid panel [44] was probed with primers zEX3F: GCATGCAGCCGGTGTCTT-GGA and zEX3R:GTCTCTTTGGTGAGCAGCAG corresponding to the third exon of the zebrafish *ETV6* gene (GenBank acc. no. AF339838; [25]). Mapping results were obtained at ZFIN <http://zfish.uoregon.edu/ZFIN>.

### List of Abbreviations

ALL, acute lymphoblastic leukemia; LRP6, LDL receptor protein 6; GPR19, G-protein coupled receptor 19; CREBL2, Cre-Binding protein-like 2; CDKN1B, Cyclin-dependent kinase inhibitor 1B; TIMP3, Tissue inhibitor of metalloproteinase 3; SYNIII, Synapsin III; SLC16A7, Solute carrier family 16, member 7; KUB3, KU-70-binding protein 3

### Authors' Contributions

A.M. carried out the molecular genetic studies, participated in the sequence analysis and drafted the manuscript. M.D.W. participated in the shotgun sequence and the genome sequence alignment. M.C. carried out the zebrafish genetic mapping analysis. B.F.K. coordinated the shotgun sequence of *Fugu* genomic clones. D.S. conceived this study and participated in its design and coordination. All authors read and approved the final manuscript.

### Acknowledgements

D.S. is a scholar of the Fonds de la Recherche en Santé du Québec. A.M. has received a studentship from the Canadian Institutes for Health Research (CIHR). M.D.W. is supported by the Michael Smith Foundation for Health Research. This work was supported by grants from the CIHR (D.S. and B.F.K.) and The Canadian Genetic Diseases Network (B.F.K.).

### References

- Berger R, Bernheim A, Le Coniat M, Vecchione D, Pacot A, Daniel MT and Flandrin G: **Abnormalities of the short arm of chromosome 12 in acute nonlymphocytic leukemia and dysmyelopoietic syndrome** *Cancer Genet.Cytogenet.* 1986, **19**:281-289.
- Raimondi SC, Williams DL, Callihan T, Peiper S, Rivera GK and Murphy SB: **Nonrandom involvement of the 12p12 breakpoint in chromosome abnormalities of childhood acute lymphoblastic leukemia** *Blood* 1986, **68**:69-75.
- Aissani B, Bonan C, Baccichet A and Sinnett D: **Childhood acute lymphoblastic leukemia: is there a tumor suppressor gene in chromosome 12p12.3?** *Leuk Lymphoma* 1999, **34**:231-239.
- Baccichet A and Sinnett D: **Frequent deletion of chromosome 12p12.3 in children with acute lymphoblastic leukaemia** *Br J Haematol* 1997, **99**:107-114.
- Stegmaier K, Pendse S, Barker GF, Bray-Ward P, Ward DC, Montgomery KT, Krauter KS, Reynolds C, Sklar J, Donnelly M and .: **Frequent loss of heterozygosity at the TEL gene locus in acute lymphoblastic leukemia of childhood** *Blood* 1995, **86**:38-44.
- Takeuchi S, Bartram CR, Miller CW, Reiter A, Seriu T, Zimmermann M, Schrappe M, Mori N, Slater J, Miyoshi I and Koeffler HP: **Acute lymphoblastic leukemia of childhood: identification of two distinct regions of deletion on the short arm of chromosome 12 in the region of TEL and KIP1** *Blood* 1996, **87**:3368-3374.
- Aissani B and Sinnett D: **Fine physical and transcript mapping of a 1.8 Mb region spanning the locus for childhood acute lymphoblastic leukemia on chromosome 12p12.3** *Gene* 1999, **240**:297-305.
- Baens M, Wlodarska I, Corveleyn A, Hoornaert I, Hagemeijer A and Marynen P: **A physical, transcript, and deletion map of chromosome region 12p12.3 flanked by ETV6 and CDKN1B: hypermethylation of the LRP6 CpG island in two leukemia patients with hemizygous del(12p)** *Genomics* 1999, **56**:40-50.
- Rubnitz JE, Pui CH and Downing JR: **The role of TEL fusion genes in pediatric leukemias** *Leukemia* 1999, **13**:6-13.
- Polyak K, Lee MH, Erdjument-Bromage H, Koff A, Roberts JM, Tempst P and Massague J: **Cloning of p27Kip1, a cyclin-dependent kinase inhibitor and a potential mediator of extracellular antimitogenic signals** *Cell* 1994, **78**:59-66.
- Toyoshima H and Hunter T: **p27, a novel inhibitor of G1 cyclin-Cdk protein kinase activity, is related to p21** *Cell* 1994, **78**:67-74.
- Montpetit A, Boily G and Sinnett D: **A detailed transcriptional map of the chromosome 12p12 tumour suppressor locus** *Eur.J.Hum.Genet.* 2002, **10**:62-71.
- Brenner S, Elgar G, Sandford R, Macrae A, Venkatesh B and Aparicio S: **Characterization of the pufferfish (*Fugu*) genome as a compact model vertebrate genome** *Nature* 1993, **366**:265-268.
- Baxendale S, Abdulla S, Elgar G, Buck D, Berks M, Micklem G, Durbin R, Bates G, Brenner S and Beck S: **Comparative sequence analysis of the human and pufferfish Huntington's disease genes** *Nat.Genet.* 1995, **10**:67-76.
- Caldas C, Kim MH, MacGregor A, Cain D, Aparicio S and Wiedemann LM: **Isolation and characterization of a pufferfish MLL (mixed lineage leukemia)-like gene (fMLI) reveals evolutionary conservation in vertebrate genes related to *Drosophila* trithorax** *Oncogene* 1998, **16**:3233-3241.
- Aparicio S, Morrison A, Gould A, Gilthorpe J, Chaudhuri C, Rigby P, Krumlauf R and Brenner S: **Detecting conserved regulatory elements with the model genome of the Japanese puffer fish, *Fugu rubripes*** *Proc.Natl.Acad.Sci.U.S.A* 1995, **92**:1684-1688.
- Kimura C, Takeda N, Suzuki M, Oshimura M, Aizawa S and Matsuo I: **Cis-acting elements conserved between mouse and pufferfish *Otx2* genes govern the expression in mesencephalic neural crest cells** *Development* 1997, **124**:3929-3941.
- Rowitch DH, Echelard Y, Danielian PS, Gellner K, Brenner S and McMahon AP: **Identification of an evolutionarily conserved 110 base-pair cis-acting regulatory sequence that governs *Wnt-1* expression in the murine neural plate** *Development* 1998, **125**:2735-2746.
- Elgar G, Sandford R, Aparicio S, Macrae A, Venkatesh B and Brenner S: **Small is beautiful: comparative genomics with the pufferfish (*Fugu rubripes*)** *Trends Genet.* 1996, **12**:145-150.
- Koop BF and Nadeau JH: **Pufferfish and new paradigm for comparative genome analysis** *Proc.Natl.Acad.Sci.U.S.A* 1996, **93**:1363-1365.
- Trower MK, Orton SM, Purvis IJ, Sanseau P, Riley J, Christodoulou C, Burt D, See CG, Elgar G, Sherrington R, Rogaev EI, George-Hyslop P, Brenner S and Dykes CW: **Conservation of synteny between the genome of the pufferfish (*Fugu rubripes*) and the region on human chromosome 14 (14q24.3) associated with familial Alzheimer disease (AD3 locus)** *Proc.Natl.Acad.Sci.U.S.A* 1996, **20**:1366-1369.
- Venkatesh B, Gilligan P and Brenner S: ***Fugu*: a compact vertebrate reference genome** *FEBS Lett.* 2000, **476**:3-7.

23. Gilley J and Fried M: **Extensive gene order differences within regions of conserved synteny between the Fugu and human genomes: implications for chromosomal evolution and the cloning of disease genes** *Hum.Mol.Genet.* 1999, **8**:1313-1320.
24. Smith SF, Snell P, Gruetzner F, Bench AJ, Haaf T, Metcalfe JA, Green AR and Elgar G: **Analyses of the extent of shared synteny and conserved gene orders between the genome of Fugu rubripes and human 20q** *Genome Res.* 2002, **12**:776-784.
25. Montpetit A and Sinnett D: **Comparative analysis of the ETV6 gene in vertebrate genomes from pufferfish to human** *Oncogene* 2001, **20**:3437-3442.
26. Elgar G, Clark MS, Meek S, Smith S, Warner S, Edwards YJ, Bouchireb N, Cottage A, Yeo GS, Umrانيا Y, Williams G and Brenner S: **Generation and analysis of 25 Mb of genomic DNA from the pufferfish Fugu rubripes by sequence scanning** *Genome Res.* 1999, **9**:960-971.
27. Pohar N, Godenschwege TA and Buchner E: **Invertebrate tissue inhibitor of metalloproteinase: structure and nested gene organization within the synapsin locus is conserved from Drosophila to human** *Genomics* 1999, **57**:293-296.
28. Lin RY, Vera JC, Chaganti RS and Golde DW: **Human monocarboxylate transporter 2 (MCT2) is a high affinity pyruvate transporter** *J.Biol.Chem.* 1998, **273**:28959-28965.
29. Yang CR, Yeh S, Leskov K, Odegaard E, Hsu HL, Chang C, Kinsella TJ, Chen DJ and Boothman DA: **Isolation of Ku70-binding proteins (KUBs)** 1999.
30. Miles C, Elgar G, Coles E, Kleinjan DJ, van Heyningen V and Hastie N: **Complete sequencing of the Fugu WAGR region from WT1 to PAX6: dramatic compaction and conservation of synteny with human chromosome 11p13** *Proc.Natl.Acad.Sci.U.S.A* 1998, **95**:13068-13072.
31. Aparicio S, Hawker K, Cottage A, Mikawa Y, Zuo L, Venkatesh B, Chen E, Krumlauf R and Brenner S: **Organization of the Fugu rubripes Hox clusters: evidence for continuing evolution of vertebrate Hox complexes** *Nat.Genet.* 1997, **16**:79-83.
32. Power DM, Ingleton PM, Flanagan J, Canario AV, Danks J, Elgar G and Clark MS: **Genomic structure and expression of parathyroid hormone-related protein gene (PTHrP) in a teleost, Fugu rubripes** *Gene* 2000, **30**:67-76.
33. Aparicio S, Chapman J, Stupka E, Putnam N, Chia JM, Dehal P, Christoffels A, Rash S, Hoon S, Smit A, Gelpke MD, Roach J, Oh T, Ho Y, Wong M, Detter C, Verhoef F, Predki P, Tay A, Lucas S, Richardson P, Smith SF, Clark MS, Edwards YJ, Doggett N, Zharkikh A, Tavtigian SV, Pruss D, Barnstead M, Evans C, Baden H, Powell J, Glusman G, Rowen L, Hood L, Tan YH, Elgar G, Hawkins T, Venkatesh B, Rokhsar D and Brenner S: **Whole-genome shotgun assembly and analysis of the genome of Fugu rubripes** *Science* 2002, **297**:1301-1310.
34. Boeddrich A, Burgtorf C, Roest Crollius H, Hennig S, Bernot A, Clark M, Reinhardt R, Lehrach H and Francis F: **Analysis of the spermine synthase gene region in Fugu rubripes, Tetraodon fluviatilis, and Danio rerio** *Genomics* 1999, **57**:164-168.
35. Ohta Y, Okamura K, McKinney EC, Bartl S, Hashimoto K and Flajnik MF: **Primitive synteny of vertebrate major histocompatibility complex class I and class II genes** *Proc.Natl.Acad.Sci.U.S.A* 2000, **97**:4712-4717.
36. Postlethwait JH, Woods IG, Ngo-Hazelett P, Yan YL, Kelly DP, Chu F, Huang H, Hill-Force A and Talbot WS: **Zebrafish comparative genomics and the origins of vertebrate chromosomes.** *Genome Res* 2000, **12**:1890-1902.
37. McLysaght A, Enright AJ, Skrabanek L and Wolfe KH: **Estimation of synteny conservation and genome compaction between pufferfish (Fugu) and human** *Yeast* 2000, **17**:22-36.
38. Amores A, Force A, Yan YL, Joly L, Amemiya C, Fritz A, Ho RK, Langeland J, Prince V, Wang YL, Westerfield M, Ekker M and Postlethwait JH: **Zebrafish hox clusters and vertebrate genome evolution** *Science* 1998, **282**:1711-1714.
39. Meyer A and Schartl M: **Gene and genome duplications in vertebrates: the one-to-four (-to-eight in fish) rule and the evolution of novel gene functions** *Curr.Opin.Cell Biol.* 1999, **11**:699-704.
40. Taylor JS, Braasch I, Frickey T, Meyer A and Van de Peer Y: **Genome duplication, a trait shared by 22000 species of ray-finned fish** *Genome Res* 2003, **13**:382-390.
41. Gilligan P, Brenner S and Venkatesh B: **Fugu and human sequence comparison identifies novel human genes and conserved non-coding sequences** *Gene* 2002, **294**:35.
42. Muller F, Blader P and Strahle U: **Search for enhancers: teleost models in comparative genomic and transgenic analysis of cis regulatory elements** *Bioessays* 2002, **24**:564-572.
43. Wilson MD, Riemer C, Martindale DW, Schnupf P, Boright AP, Cheung TL, Hardy DM, Schwartz S, Scherer SW, Tsui LC, Miller W and Koop BF: **Comparative analysis of the gene-dense ACHE/TFR2 region on human chromosome 7q22 with the orthologous region on mouse chromosome 5** *Nucleic Acids Res.PG.* 2001, **29**:1352-1365.
44. Hukriede NA, Joly L, Tsang M, Miles J, Tellis P, Epstein JA, Barbazuk WB, Li FN, Paw B, Postlethwait JH, Hudson TJ, Zon LI, McPherson JD, Chevrette M, Dawid IB, Johnson SL and Ekker M: **Radiation hybrid mapping of the zebrafish genome** *Proc.Natl.Acad.Sci.U.S.A* 1999, **96**:9745-9750.

Publish with **BioMed Central** and every scientist can read your work free of charge

"BioMed Central will be the most significant development for disseminating the results of biomedical research in our lifetime."

Sir Paul Nurse, Cancer Research UK

Your research papers will be:

- available free of charge to the entire biomedical community
- peer reviewed and published immediately upon acceptance
- cited in PubMed and archived on PubMed Central
- yours — you keep the copyright

Submit your manuscript here:  
http://www.biomedcentral.com/info/publishing\_adv.asp

