

RESEARCH ARTICLE

Open Access

Characterization of expressed sequence tags from developing fibers of *Gossypium barbadense* and evaluation of insertion-deletion variation in tetraploid cultivated cotton species

Yuanda Lv[†], Liang Zhao[†], Xiaoyang Xu, Lei Wang, Cheng Wang, Tianzhen Zhang and Wangzhen Guo^{*}

Abstract

Background: Cotton is the leading fiber crop worldwide. *Gossypium barbadense* is an important species of cotton because of its extra-long staple fibers with superior luster and silkiness. However, a systematic analysis and utilization of cDNA sequences from *G. barbadense* fiber development remains understudied.

Results: A total of 21,079 high quality sequences were generated from two non-normalized cDNA libraries prepared by using a mixture of *G. barbadense* Hai7124 fibers and ovules. After assembly processing, a set of 8,653 unigenes were obtained. Of those, 7,786 were matched to known proteins and 7,316 were assigned to functional categories. The molecular functions of these unigenes were mostly related to binding and catalytic activity, and carbohydrate, amino acid, and energy metabolisms were major contributors among the subsets of metabolism. Sequences comparison between *G. barbadense* and *G. hirsutum* revealed that 8,245 unigenes from *G. barbadense* were detected the similarity with those released publicly in *G. hirsutum*, however, the remaining 408 sequences had no hits against *G. hirsutum* unigenes database. Furthermore, 13,275 putative ESTs InDels loci involved in the orthologous and/or homoeologous differences between/within *G. barbadense* and *G. hirsutum* were discovered by *in silico* analyses, and 2,160 InDel markers were developed by ESTs with more than five insertions or deletions. By gel electrophoresis combined with sequencing verification, 71.11% candidate InDel loci were reconfirmed orthologous and/or homoeologous loci polymorphisms using *G. hirsutum* acc TM-1 and *G. barbadense* cv Hai7124. Blastx result showed among 2,160 InDel loci, 81 with significant function similarity with known genes associated with secondary wall synthesis process, indicating the important roles in fiber quality in tetraploid cultivated cotton species.

Conclusion: Sequence comparisons and InDel markers development will lay the groundwork for promoting the identification of genes related to superior agronomic traits, genetic differentiation and comparative genomic studies between *G. hirsutum* and *G. barbadense*.

Background

Cotton (*Gossypium* spp.) is the leading fiber crop worldwide. There are four cultivated cotton species, two diploids from Africa-Asia, *G. herbaceum* L. (Gh, A₁ genome) and *Gossypium arboreum* L. (Ga, A₂ genome), and two tetraploids from Americas, *G. hirsutum* L. (Gh, AD₁ genome)

and *G. barbadense* L. (Gb, AD₂ genome). At present, *G. hirsutum* is the most widely cultivated cotton species, accounting for more than 95% of the world cotton production (National Cotton Council, 2012, <http://www.cotton.org/econ/cropinfo/index.cfm>), followed by *G. barbadense* (accounting for 2 ~ 3%) and *G. arboreum* (accounting for 1 ~ 2%), while *G. herbaceum* is rarely cultivated. *G. hirsutum* has the characteristics of high yield, broad adaptation, and medium fiber quality. *G. barbadense* typically has a longer growing period, matures later, and produces smaller bolls that give a yield significantly lower than that

* Correspondence: moelab@njau.edu.cn

[†]Equal contributors

National Key Laboratory of Crop Genetics & Germplasm Enhancement,
Cotton Research Institute, Nanjing Agricultural University, Nanjing 210095,
China

of *G. hirsutum*. In spite of these drawbacks, however, *G. barbadense* possesses superior fiber properties, which makes it an important raw material for high-grade or special cotton fiber textiles [1].

Recently, a number of genome resources have been developed from the genus *Gossypium* including the construction of high-density tetraploid cotton genetic linkage maps [2-7], construction of large-insert BAC libraries [8,9], and analyses of expressed sequence tags (EST) related to fiber development [10,11]. Of these, EST analysis is not only the most efficient approach for gene discovery, but also an effective approach for the development of polymorphic DNA markers. As of Jan. 20, 2012, approximately 414,265 cotton EST sequences are available in Genbank ESTs database (<http://www.ncbi.nlm.nih.gov/dbEST/>). Among them, 297,214 ESTs were from *G. hirsutum*, 63,577 from *G. raimondii*, 41,781 from *G. arboreum*, while only 11,446 and 247 were from *G. barbadense* and *G. herbaceum*, respectively. Compared with great amount of EST resources from *G. hirsutum*, ESTs for *G. barbadense* are relatively scarce and have hindered the exploration of its economic importance.

Large scale transcript sequences offer an efficient resource for targeted marker development. In cotton, SSR markers have been mined widely based on existing sequences data from different cotton species [2,12-17], and applied widely in characterizing variations of genes, genome-wide mapping [18-21], and as a tool for marker-assisted selection [22-26]. In addition to SSR loci, the distribution of insertion-deletion (InDel) and single nucleotide polymorphisms (SNPs) variations are more widespread in the whole genome. Recently, InDel and SNPs are increasing in their application in studies of cotton genomics [27-29]. As an application, 223 SNP markers were mapped in 186 recombinant inbred lines from a cross between TM-1 and 3-79 [28]. Information from these large-scale markers will serve as a foundation for constructing high-density genetic maps, cloning and mapping of important genes, improving gene prediction and annotation, and elucidating the interspecific divergence in different cotton species.

In this study, we constructed two non-normalized cDNA libraries from fibers and ovules mixtures at -3 to 5 days post-anthesis (DPA) and fibers at 6 to 24 DPA, for efficient generation of unique ESTs from *G. barbadense* cv. Hai7124. In total, 21,079 ESTs were generated by a large-scale 5' end single-pass sequencing of randomly picked cDNA clones from the two libraries. Upon adding the released 11,446 *G. barbadense* EST sequences in the National Center for Biotechnology Information (NCBI), EST assembly for *G. barbadense* was performed and functional categories of unigenes were assigned. Further, by meta-analysis of fiber ESTs between *G. barbadense* and *G. hirsutum*, some putative *G. barbadense*-specific expressed

fiber genes and InDel loci of orthologous or homoeologous variation between/within *G. barbadense* and *G. hirsutum* were developed, which put the foundation for promoting the identification of genes related to superior agronomic traits, genetic differentiation and comparative genomic studies between *G. hirsutum* and *G. barbadense*.

Results

Generation of *G. barbadense* fiber ESTs

Two high-quality *G. barbadense* cotton fiber cDNA libraries were constructed using Hai7124 developing fiber tissues, one for -3 to 5 DPA (named as GB1 library) and the other for 6 to 24 DPA (named as GB2 library) respectively. Once each library was constructed, the lengths of inserts were identified by amplifying randomly 100 clones with universal T7 primers. The results showed that most of the inserts were among 0.5-1.2 kb, with an average length of 0.7 kb for the GB1 library and 0.8 kb for the GB2 library. Based on this, 22,329 cDNA clones (12,040 from GB1 library and 10,289 from GB2 library) were randomly isolated and sequenced to generate ESTs from the 5' end. After the removal of low quality sequences below the Q20 threshold, short sequences less than 100 bp in length, and those with vector sequences and poly-A tails, 21,079 high-quality sequences with scores ranging from 40 to 60 were obtained for further analysis. Most of the sequences ranged from 500 to 900 bp, with an average sequence length of 652 bp with the longest EST at 877 bp. All high quality sequences have been deposited in the dbEST division of GenBank under the accession numbers JK790134 to JK811212.

Assembly and function annotation of *G. barbadense* fiber ESTs

To reduce the redundancy and facilitate the process of gene annotation and mapping, all *G. barbadense* EST sequences available in Genbank and herein were combined for EST processing and assembly analysis. Of 32,525 ESTs, 4,938 were singletons and the remaining were assembled into 3,715 contigs, yielding 8,653 unigenes for further analysis. The average sequence length of unigenes was 712 bp, and the longest unigene was 2,331 bp. We subjected 8,653 unigenes to Blastx against the non-redundant (nr) database to identify their similarities with known proteins (Additional file 1: Table S1). In total, 7,786 (89.98%) sequences shared the high similarity with public protein sequences, of these, 7,224 (83.49%) matched known proteins and 562 (6.49%) were unknown or hypothetical proteins. The remaining 867 (10.02%) sequences had no similarities in the tested databases and might be either 3' or 5' untranslated regions (UTRs) of genes with too short of a coding sequence, or novel genes [30].

Function classification and metabolic pathway analysis of unigenes

Of the 8,653 unigenes, 7,316 were mapped to the GO hierarchy with characterized biochemical and physiological functions using Gene ontology annotation (Additional file 1: Table S1). Of these, 6,348 were mapped to GO categories, and were involved with biological processes, molecular functions, and cellular components. At a second level, the majority of the GO terms were grouped into cellular process (32.30%) and metabolic process (29.89%) categories within biological processes, binding (43.56%) and catalytic activity (31.42%) categories within molecular functions, and cell part (28.79%), cell (28.79%), and organelle (22.55%) categories within cellular components.

At a third level, the different categories were further mined. In biological processes (Figure 1a), the metabolic process was the most enriched as “cellular metabolic process” ranked first, accounting for 16.08% of the unigenes involved with biological processes. “Primary metabolic process” was second with 15.24%, and third was the “macromolecule metabolic process” with 12.63% of the unigenes. Within the molecular function category (Figure 1b), the highly enriched GO terms in “binding” were distributed in the following way: 12.09% represented “protein binding”, 10.81% were “nucleic acid binding”, 9.84% were “ion binding”, and 8.73% were

involved with “nucleotide binding”. The top three highly enriched GO terms in “catalytic activity” were 9.00% belonging to “hydrolase activity”, 7.90% on transferase activity, and 6.46% on oxidoreductase activity. Furthermore, the cellular component mostly took place in “intracellular” with 18.51%, “intracellular part” with 18.11% and “intracellular organelle” with 16.50% (Figure 1c).

In addition, by a comparison with the Kyoto Encyclopedia of Genes and Genomes database (KEGG), the metabolic-related enzymes encoded by 4,436 unigenes were also located in metabolic maps based on the KEGG pathway classification (Table 1, Additional file 2: Table S2). The metabolism category was the richest (2,192, 49.41%), followed by the categories of environmental information processing (415, 9.36%), cellular processes (294, 6.63%), genetic information processing (192, 4.33%), organismal systems (328, 7.39%) and metabolic pathways related to human diseases (1,015, 22.88%). In the category of metabolism, the mapped enzymes were mostly involved in carbohydrate metabolism (609 clusters), amino acid metabolism (330 clusters), and energy metabolism (304 clusters). In the category of cellular process, 62.59% were related to cell growth and death (184 clusters). In the category of organismal systems, the endocrine system (164, 26.45%), and immune system (124, 20.00%) were major contributors. In the category of environmental

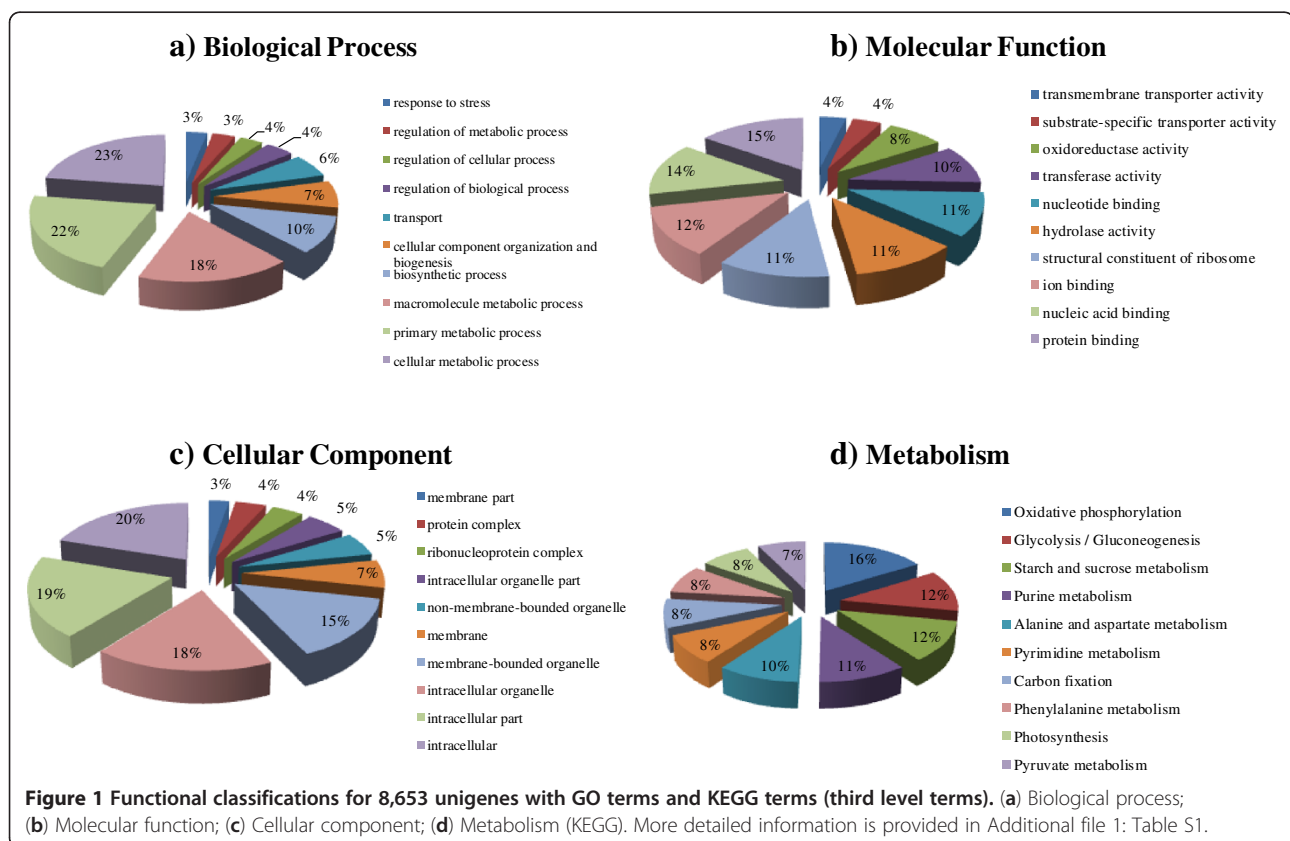


Table 1 Summary for the metabolic analysis of unigenes (second level)

| 1 Metabolism | 2192 | 49.41% |
|---|-------------|---------------|
| Carbohydrate metabolism | 609 | 13.73% |
| Energy metabolism | 304 | 6.85% |
| Lipid metabolism | 188 | 4.24% |
| Nucleotide metabolism | 170 | 3.83% |
| Amino acid metabolism | 330 | 7.44% |
| Metabolism of other amino acids | 185 | 4.17% |
| Glycan biosynthesis and metabolism | 13 | 0.29% |
| Metabolism of cofactors and vitamins | 151 | 3.40% |
| Metabolism of terpenoids and polyketides | 67 | 1.51% |
| Biosynthesis of other secondary metabolites | 91 | 2.05% |
| Xenobiotics biodegradation and metabolism | 84 | 1.89% |
| 2 Genetic information processing | 192 | 4.33% |
| Transcription | 35 | 0.79% |
| Translation | 13 | 0.29% |
| Folding, sorting and degradation | 113 | 2.55% |
| Replication and repair | 31 | 0.70% |
| 3 Environmental information processing | 415 | 9.36% |
| Signal transduction | 413 | 9.31% |
| Signaling molecules and interaction | 2 | 0.05% |
| 4 Cellular processes | 294 | 6.63% |
| Transport and catabolism | 2 | 0.05% |
| Cell motility | 69 | 1.56% |
| Cell growth and death | 184 | 4.15% |
| Cell communication | 39 | 0.88% |
| 5 Organismal systems | 328 | 7.39% |
| Immune system | 124 | 2.80% |
| Endocrine system | 164 | 3.70% |
| Nervous system | 19 | 0.43% |
| Sensory system | 2 | 0.05% |
| Development | 19 | 0.43% |
| 6 Human diseases | 1015 | 22.88% |
| Cancers | 479 | 10.80% |
| Immune diseases | 25 | 0.56% |
| Neurodegenerative diseases | 350 | 7.89% |
| Endocrine and metabolic diseases | 14 | 0.32% |
| Infectious diseases | 147 | 3.31% |

information processing, 99.76% of unigenes were involved in signal transduction. In the category of genetic information processing, folding, sorting and degradation was the majority (113, 58.85% of the category), followed by transcription (35, 18.23%) and replication and repair (31, 16.15%). At a third level, the mappings of metabolism associated with oxidative phosphorylation (16%),

glycolysis/gluconeogenesis (12%), and starch and sucrose metabolism (12%) were further tagged (Figure 1d).

Transcript abundance and highly enriched genes during fiber development

The level of representation in a cDNA library generally correlates with transcript abundance in non-normalized conditions. We assessed the distribution of contigs based on the number of assembled ESTs. Compared with singletons, most of the contigs consisted of 2 to 5 ESTs and a few were comprised of more than 100 ESTs (Figure 2). The top 10 most highly expressed unigenes and their annotations can be found in the Table 2, including non-specific lipid-transfer protein family, copper-zinc superoxide dismutase, E6, fiber protein (fb10), which was responsible for fiber development and growth in previous studies [31-35].

Comparisons with the *G. hirsutum* ESTs

ESTs data from *G. hirsutum* were downloaded from GenBank. Poly A/T sequences occurring at the end of ESTs and vectors were removed from original sequences. As a result, a set of cleaned ESTs generated from *G. hirsutum* was clustered and assembled using the CAP3 assembly program. The clustering of ESTs from *G. hirsutum* yielded 94,955 unigenes, with 25,290 contigs and 69,665 singletons, respectively.

To find putative specific expression genes in *G. barbadense*, 8,653 unigenes from *G. barbadense* were used to detect similarity with *G. hirsutum* unigenes using the Tblastx program with a significant similarity (E-value) threshold of 10^{-10} . As a result, 8,245 unigenes from *G. barbadense* were detected the similarity with *G. hirsutum*. The remaining 408 sequences had no hits against the *G. hirsutum* unigenes database.

The putative 408 specific expression genes in *G. barbadense* were assigned functions by Blastx against the nr protein database. Of these, 213 sequences had one or more similarities with proteins in the non-redundant protein database, however, 195 sequences had no significant similarity. According to ESTs abundance, we also confirmed the expression specificity/predominance of these genes by selecting seven putative genes at random to analyze their expression patterns at 10 and 20 DPA in the fiber developmental process between *G. hirsutum* acc. TM-1 and *G. barbadense* cv. Hai7124 using RT-PCR method (Additional file 3: Figure S1). These putative *G. barbadense* specific expressed genes encoded mainly for the vacuolar H⁺-atpase c subunit, profiling, anthocyanidin synthase, proline-rich protein, kinetochore protein, etc. The detailed annotation information and abundance of specific expressed genes in *G. barbadense* were listed in supplementary Additional file 4: Table S3.

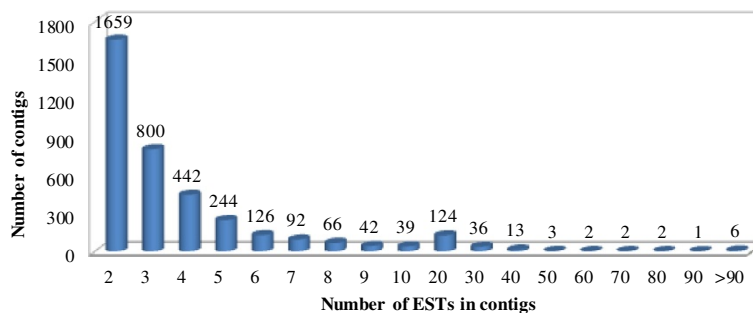


Figure 2 Distribution of contigs based on the number of assembled ESTs.

Large-scale discovery and confirmation of InDels between/within *G. barbadense* and *G. hirsutum* ESTs

InDels can lead to differentiation of species, and small InDels were widely distributed in the different species. In the study, 297,214 *G. hirsutum* and 32,525 *G. barbadense* EST sequences were assigned as two distinct data sets for all possible InDels loci based on *in silico* PCR strategy. A set of primer pairs from *G. barbadense* EST sequences were run against the *G. hirsutum* EST sequences dataset based on *in silico* PCR analysis with a threshold less than 3 mismatch bases. In total, 28,426 InDel loci derived from 18,797 *G. barbadense* ESTs were identified using a

custom InDel_pipeline.pl script. After redundancy analysis, 13,275 unique EST InDel loci were detected for further study. Of these, 6,502 contained only 1 bp InDel size, 4,613 with 2 to 4 bp, 1,125 with 5 to 10 bp, and 1,035 had more than 10 bp. The average length of the InDels was 21 bp, with the longest InDels up to 168 bp (Additional file 5: Table S4).

Based on *in silico* PCR analysis, 2,160 InDel markers were developed with InDel lengths ≥ 5 bp (Additional file 6: Table S5). To verify the accuracy and efficiency of InDel markers, 90 randomly selected InDel primer pairs were synthesized for the polymorphisms detection between/

Table 2 Top 10 highly enriched genes in fiber developmental stages

| Unigene_ID | ESTs Num. | Seq description | Length | eValue |
|-------------|-----------|---|--------|----------|
| Unigene0544 | 992 | lipid transfer protein family | 630 | 1.0E-52 |
| Unigene3080 | 445 | E6 protein | 812 | 1.0E-38 |
| Unigene2175 | 203 | histone h3 | 744 | 1.0E-70 |
| Unigene2382 | 178 | copper-zinc superoxide dismutase | 598 | 1.0E-71 |
| Unigene1298 | 162 | polyubiquitin | 1157 | 1.0E-167 |
| Unigene2429 | 146 | fiber protein fb10 | 602 | 1.0E-55 |
| Unigene1075 | 130 | alpha tubulin 1 | 1656 | 0 |
| Unigene0129 | 127 | plasma membrane intrinsic protein | 1054 | 1.0E-147 |
| Unigene2564 | 96 | arabinogalactan protein | 1036 | 1.0E-89 |
| Unigene0009 | 91 | anthocyanidin reductase | 1318 | 0 |
| Unigene0343 | 90 | vacuolar h ⁺ -atpase c subunit | 848 | 1.0E-56 |
| Unigene2530 | 78 | metallothionein-like protein | 559 | 1.0E-26 |
| Unigene0786 | 74 | xyloglucan endotransglycosylase | 1172 | 1.0E-145 |
| Unigene1516 | 69 | ribosomal protein l9 | 889 | 1.0E-95 |
| Unigene2082 | 66 | alpha expansin | 1181 | 1.0E-125 |
| Unigene1627 | 65 | 60s acidic ribosomal protein p1 | 623 | 1.0E-19 |
| Unigene1504 | 64 | dihydroflavonol 4-reductase | 1361 | 0 |
| Unigene0270 | 58 | ubq10 (polyubiquitin 10) protein binding | 909 | 1.0E-118 |
| Unigene0180 | 58 | mads-box transcription factor | 860 | 1.0E-120 |
| Unigene0658 | 38 | glyceraldehyde-3-phosphate dehydrogenase | 1349 | 1.0E-170 |

within *G. barbadense* and *G. hirsutum* using two tetraploids, *G. hirsutum* acc. TM-1 and *G. barbadense* cv. Hai7124, and two diploids, *G. herbaceum* and *G. raimondii*.

Of 90 randomly selected InDel loci, 64 primer pairs showed distinguishable orthologous and/or homoeologous polymorphisms (Figure 3), with 46.87% (from 30 InDel markers) orthologous polymorphisms (Type 1 in Figure 3) and 53.13% (from 34 InDel markers) homoeologous polymorphisms (Type 2 in Figure 3). In addition, 20 InDel primer pairs were unable to produce detectable polymorphic electrophoresis bands between *G. hirsutum* and *G. barbadense* (Type 3 in Figure 3), and 6 InDel primer pairs failed to amplify PCR products in tested cotton accessions.

Amplification information for 90 InDels markers is included in the Electronic Supplementary Additional file 7: Table S6.

For confirming the accuracy of InDel loci in the transcriptional regions, the amplification products from 9 InDel primer pairs with different types (Figure 3) were individually recovered from polyacrylamide gels and sequenced. The length of all amplicons was equal to or greater than that expected from *G. barbadense*. Sequences alignment analysis from orthologous and/or homoeologous loci amplified by 8 InDel primer pairs (Type 1 and Type 2 in Figure 3), showed that, except for size difference in intron region, InDels from the corresponding exon regions

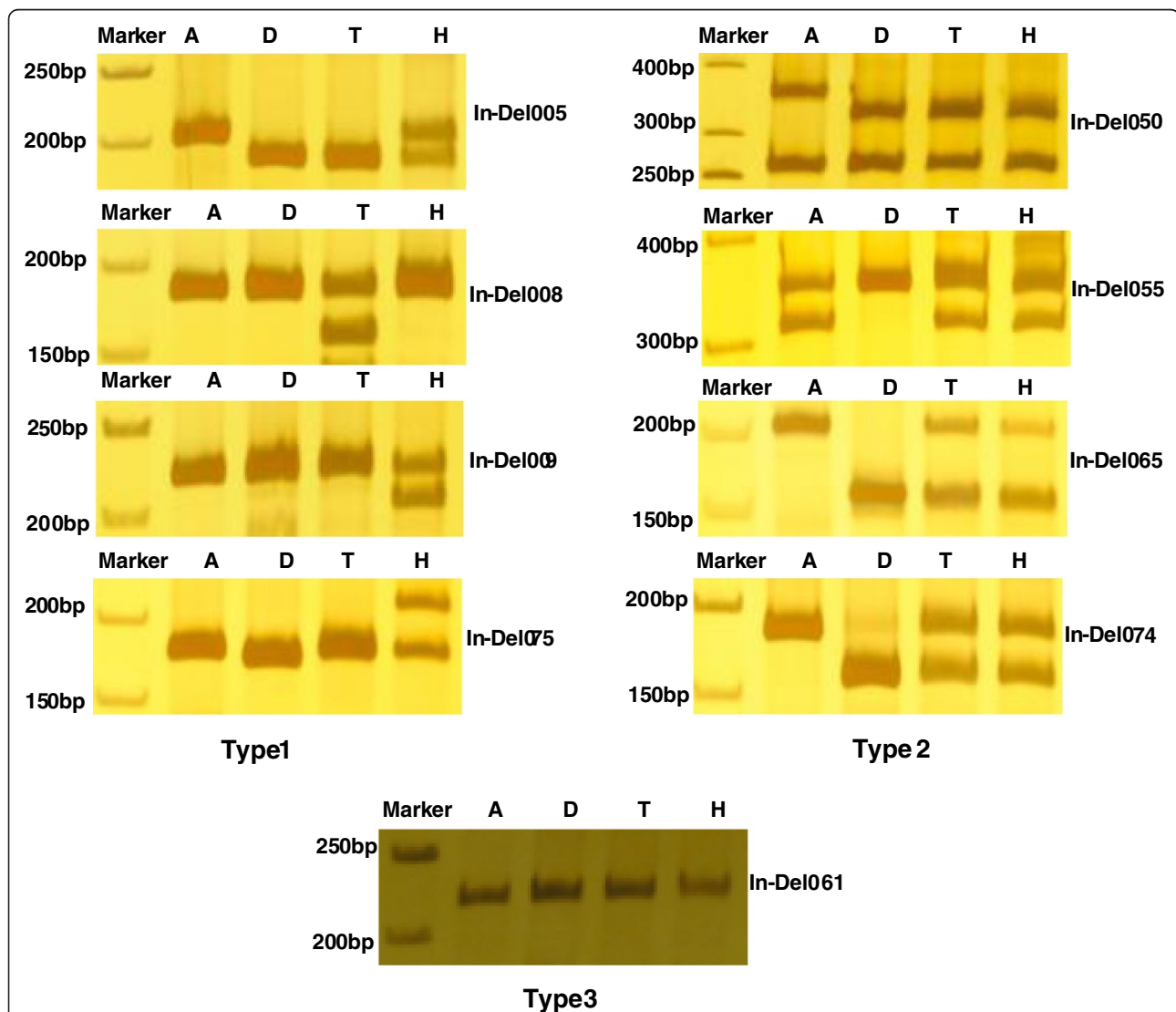


Figure 3 Electropherogram and banding patterns of InDel primer pairs in four cotton species. Type 1: Orthologous loci polymorphisms between *G. barbadense* and *G. hirsutum*. Type 2: Homoeologous loci polymorphisms within *G. barbadense* and *G. hirsutum*. Type 3: Orthologous and/or homoeologous loci monomorphisms between/within *G. barbadense* and *G. hirsutum*. Note: From left to right in electropherogram: M: marker; A: *G. herbaceum*; D: *G. raimondii*; T: *G. hirsutum* acc. TM-1; H: *G. barbadense* cv. Hai7124.

were all confirmed the existence, just like the result of *in silico* analysis. To undetectable polymorphic electrophoresis bands from InDel061, sequencing analysis also showed the complete consistency of orthologous loci from four cotton species, indicating that the InDels from the transcriptional level might be due to alternative splicing events with no difference at the genome level. As for failure PCR amplification between *G. hirsutum* and *G. barbadense*, this might be related with the reason that the primer sequence from EST spanned the intron–exon boundary of the genome and need to be confirmed in the future.

Insertion-deletion EST variation in tetraploid cultivated cotton species might be responsible for fiber quality

During fiber developmental stage, cellulose synthesis and secondary cell wall (SCW) thickening is one of the most important events for fiber quality. To further confirm whether insertion-deletion EST variation in tetraploid cultivated cotton species might be related to fiber quality difference between *G. hirsutum* and *G. barbadense*, 2,160 candidate InDel loci with InDel lengths ≥ 5 bp were further assessed by blastx against TAIR (The Arabidopsis Information Resource) database (<http://www.arabidopsis.org/index.jsp>) to identify genes involved in secondary wall synthesis. As a result, 81 InDel loci with significant function similarity with known genes associated with secondary cell wall synthesis process of *Arabidopsis thaliana* trichomes (Additional file 8: Table S7). Of them, 72 were targeted to encode the cellulose synthase related genes, such as cellulose synthase, ras-related GTP-binding family, germin-like protein, beta-1,3-glucanase, glycosyl transferase (GTs), fasciclin-like arabinogalactan (FLA), chitinase-like protein (CTL), arabinogalactan (AGP), and sucrose synthase (Sus). Other nine were targeted to encode the transcriptional factor related genes, such as myb-related protein, homeodomain protein, and zinc finger protein.

In these predicted genes, some family genes have been identified as a major role in cotton fiber secondary wall synthesis, such as *GhCesA* (cellulose synthase catalytic subunit) [36-38], *GhFLA* (fasciclin-like arabinogalactan) [39,40], *GhAGP* (Arabinogalactan protein) [41], *Rac13* [42], *GhCTL* (chitinase-like) [43], and *Sus* (sucrose synthase) [44]. The insertion-deletion EST variation of these key genes related to fiber secondary cell wall synthesis might play the important roles in fiber quality in tetraploid cultivated cotton species.

Discussion

***G. barbadense* ESTs - indispensable cotton breeding sequences resource**

G. barbadense has been used more commonly as a gene donor for the high-quality cotton fiber trait. The hybrids produced with *G. hirsutum* are expected to have the desirable characteristics including a high yield, exceptional fiber

length, fineness and strength. However, the lack of *G. barbadense* genomic resources has seriously hampered the exploration of modern functional genomic approaches for selective breeding purposes.

Expressed Sequence Tag (EST) sequencing strategies are efficient in identifying a large number of genes expressed in a given tissue, which are particularly relevant when no genomic data are available [45]. Prior to this publication, only one *G. barbadense* dataset was publicly released, which included 11,446 ESTs from *G. barbadense* cv. 3–79 fiber tissues [46]. In our study, 21,079 high quality sequences were generated from two non-normalized cDNA libraries prepared by using a mixture of Hai7124 fibers and ovules at –3 to 5 days post-anthesis (DPA) and fibers at 6 to 24 DPA. The assembly resulted in approximately 8,653 unigenes, involving 3,715 contigs and 4,938 singletons. About 83% of contigs and singletons reported here were matched with high confidence to the nr protein database. These sets of ESTs are a large contribution to enhance the number of *G. barbadense* ESTs available in public databases.

In addition, a high level of representation in a cDNA library generally correlates with transcript abundance in non-normalized conditions. Abundance analysis revealed that large clusters existed (high expression), such as lipid-transfer protein precursors, copper-zinc superoxide dismutase, E6, and arabinogalactan protein, which was in agreement with many previously reported cotton fiber key genes. Orford and Timmis (2000) suggested lipid transfer protein gene family might play an important role in fiber development [47]. John et al. (1996) described the isolation of the E6 gene that was expressed preferentially in cotton fiber tissues on the 15th and 24th days after flowering [33]. Superoxide dismutases, commonly found in all oxygen-consuming organisms, are a class of metal enzymes, which can remove superoxide anion radicals. Hu et al. (2007) reported that the copper/zinc superoxide dismutase mRNA expressing level showed regular changing in the fiber developmental process [32]. Other highly expressed genes such as anthocyanidin reductase [35], pectate lyase [34], arabinogalactan protein [41] and fiber protein fb10 also were found to play an important role in the cotton fiber development.

Comparative analysis between *G. hirsutum* and *G. barbadense*

Comparative analysis of ESTs from fiber development between *G. hirsutum* and *G. barbadense* will facilitate the identification of genes related to the important agronomic traits such as fiber growth and development. TblastX comparisons between *G. barbadense* fiber sequences and those from *G. hirsutum* released publicly in GenBank revealed that 8,245 unigenes (95.3%) from *G. barbadense* were detected as similarities with those from

G. hirsutum. The remaining 408 sequences had no hits against the *G. hirsutum* unigenes database. Though the E-Value setting, UTRs regions' interference, and insufficient coverage of *G. hirsutum* ESTs database might inevitably cause certain false positives in the process of similarity analyses, the expression predominance of selected seven unigenes in *G. barbadense* was confirmed experimentally by comparing 10 and 20 DPA fiber tissues between *G. hirsutum* acc. TM-1 and *G. barbadense* cv. Hai7124. Based on the fact that *G. barbadense* possesses superior fiber quality, key genes related to fiber quality in *G. barbadense* may be exploited in cotton molecular breeding programs for improving fiber quality. The predominantly expressed sequences found here will provide an insight into exploring interspecific fiber quality divergence between *G. barbadense* and *G. hirsutum*. Further function confirmation of these sequences will be verified by experimental analyses.

Elite genes can be mined effectively by large-scale discovery of InDels between *G. barbadense* and *G. hirsutum*

Currently, there is an increasing focus on polymorphisms of short insertions and deletions (InDels) types in genomic research of model species such as humans [48], mice [49] and rice [50]. InDels have been recognized as an abundant source of genetic markers that are widely spread across the genome, and can be genotyped with simple size separation based on PCR amplification and gel electrophoresis analyses. Thus, the InDel molecular markers were highly informative sequence-based markers suitable for high-density map construction, genome-wide association studies, genomic selection, and alignment of the whole genome sequence information.

In allopolyploids, mutational variation may arise between homologous sequences within individual subgenomes and between homoeologous sequences among subgenomes, in addition to paralogous variation between duplicated gene copies [51]. When information regarding genomic sequences is not rich, InDels polymorphism of tetraploid cotton species obtained by computational analysis might include both homologous and homoeologous loci variation. Nevertheless, mining these differences will be useful for verifying the function of the target genes and elucidating evolution in polyploid. In the study, we first reported the feasibility of using large-scale ESTs sequence data from different cotton species to extract putative insertion and deletion polymorphisms. 13,275 InDel loci were identified between *G. barbadense* and *G. hirsutum*, and 2,160 potential Gh-Gb InDel markers were further developed for genotyping and evolutionary research. Further, the InDel-derived ESTs/genes related to fiber growth and development was detected. In the paper, we found some genes involved in secondary cell wall synthesis process with potential EST InDel loci, such as those encoding

cellulose synthase, sucrose synthase, beta-1,3-glucanase, glycosyl transferase, fasciclin-like arabinogalactan protein, arabinogalactan protein, chitinase-like protein, and other transcriptional factor genes involved in secondary cell wall synthesis. In *Arabidopsis*, InDel mutations of cellulose synthase genes in secondary cell wall synthesis had been known to cause structural weaknesses in vascular bundles presumably due to cellulose deficiency [52,53]. So, the deep research of these genes will accelerate our understanding to fiber growth and development process in cotton.

Due to the fact that all InDel loci were discovered based on transcriptional level and all *G. barbadense* ESTs were collected from different stages of fiber development, Gh-Gb InDels enriched many genes related to cotton fiber development, which could greatly promote their deep research for structural and expressional differences related to the fiber development processes in *G. barbadense* and *G. hirsutum*. By randomly selecting 90 InDels primer pairs to conduct PCR analysis of genomic DNA, with the sequencing confirmation from 9 InDel loci in four cotton species, more than 70% InDel polymorphic loci (64/90 = 71.11%) were detected effectively. From the result, not only homologous and homoeologous loci difference were found, but also some evolutionary events could be inferred. The diversity among the allotetraploid cottons such as orthologous and/or homoeologous polymorphisms could be traced back to ancient diploid ancestors by banding patterns analysis, which indicated the independent evolution or different degrees of colonization by comparing *G. barbadense* and *G. hirsutum*, with two diploids, *G. herbaceum* and *G. raimondii*, as controls [4].

Taken together, InDel molecular detection provides a new tool for effectively mining genes related to superior agronomic traits, and selecting appropriate *G. barbadense* or *G. hirsutum* germplasm in cotton breeding. It also offers a novel model for the study of the origin, evolution, and genetic differentiation of *G. barbadense* and *G. hirsutum* and their adaptation to various environmental changes.

Conclusion

Transcriptome analysis from different tissues and organs provides the basis for functional genomics research. In the present work, we constructed two *G. barbadense* fiber cDNA libraries and obtained 21,079 high-quality sequences. A systematic analysis and utilization of ESTs was further performed including assembling, annotation, GO classification and comparative analysis with *G. hirsutum*. The resulting dataset yielded nearly 8,653 putative unigenes, from which over 80% had similarities with publicly available proteins. Furthermore, putative ESTs InDels loci involved in the orthologous and/or homoeologous difference between/within *G. barbadense* and *G. hirsutum* were discovered by *in silico* analysis and confirmed by experimental analysis. The large-scale *G. barbadense* ESTs in the study

were a significant contribution for public *G. barbadense* ESTs databases, and either expression or candidate EST InDel difference will provide a new tool for effectively mining genes related to superior agronomic traits. These data will provide a solid foundation for molecular breeding, functional genomics studies, and comparative genomics analysis in *Gossypium*. With the continuous growth of sequence information from non-model organisms such as cotton, we suggest that InDels will be a crucial source for next-generation mapping of key genes in these accessions.

Methods

Plant materials

G. barbadense cv. Hai7124, a commercial Sea-island *Verticillium*-resistant cultivar, was planted under standard field conditions at Jiangpu Breeding Station, Nanjing Agricultural University, Jiangsu Province, China, using normal farming practices in 2008. All necessary permits were obtained for the described field studies from Nanjing Agricultural University. Developing ovules of Hai7124 were excised from each boll at -3, 0, 3, 5, 6, 9, 12, 15, 18, 21, and 24 day post-anthesis (DPA) and used for RNA extraction. Of these, the samples at -3 to 5 DPA were collected from mixture of fibers and ovules, and the samples from 6 to 24 DPA were derived from fiber cells dissected from the ovules. All harvested plant materials were immediately frozen in liquid nitrogen and stored at -70°C.

Construction of cDNA libraries and generation of ESTs

Total RNA from different fiber developmental stages was extracted using the CTAB-sour phenol extraction method [54]. Poly (A) + mRNA was purified from total RNA using an mRNA purification kit (Qiagen, Dusseldorf, Germany). A cDNA library was made using a smartTM cDNA library construction kit (Clontech Laboratories, Inc. Mountain View, USA, www.clontech.com). Automated DNA sequencing of >10,000 random cDNAs for each library from the 5' -termini using universal T7 primers was performed with a Big Dye Terminator sequencing kit using Applied Biosystems (ABI) 3730 automated sequencers (Life Technologies Co., California, USA, www.lifetechnologies.com).

EST processing and assembly

All *G. barbadense* EST sequences from NCBI and produced here were combined for EST processing and assembly analysis. The chromatogram traces were performed by Phred [55] for base-calling and poor quality segment trimming. A Phred quality score of 20 (corresponding to an error probability of 1%) was used for trimming the sequence based on quality, in order to retain a high quality sequence. The sequences that passed quality trimming were further masked vector and adapter sequences using the program Cross_Match [55] from the NCBI Univec database (<ftp://ftp.ncbi.nih.gov/pub/UniVec/>) with the

following parameters: minmatch 20, minscore 20. PolyA tails and the "X" character were also removed by the EST_trimmer.pl script (http://pgrc.ipk-gatersleben.de/misa/download/est_trimmer.pl). After processing, sequences less than 100 bp were excluded from the analysis. ESTs larger than 100 bp length and Q20 quality after removing vectors, adapters, and ploy-A tails were performed to generate a unigene set using Cap3 [56] with the minimum overlapping length parameters >45 bp and overlapping identity percentage >90%. Cap3 assembly results were parsed using cap3_extractor.py script to identify those genes with the highest transcription abundance. All contigs and singletons were used for the further annotation.

Function annotation and classification

The unigenes (contigs and singletons) were subjected to a similarity analysis using Blastx [57] against the NCBI nr (non-redundant) protein database. Blastx were performed at expectation value of 1e-05 to filter out nonspecific high-scoring segment pairs respectively.

The set of unigenes were submitted for GO (Gene ontology) [58] annotation to the Blast2GO program [59] with the default parameters. The program extracted the GO terms associated with homologies identified with BLAST and returned a list of GO annotations represented as hierarchical categories of increasing specificity.

Unigenes were assigned into metabolic pathways with the tools supplied by the Kyoto Encyclopedia of Genes and Genomes (KEGG) [60]. The unigenes were processed using the bi-directional "best hit" method (forward and reverse reads) to assign orthologs. KAAS (KEGG Automatic Annotation Server, <http://www.genome.jp/kegg/kaas/>) provided a functional annotation of putative genes by Blast comparisons against the KEGG GENES database. The output included KO (KEGG Orthology) assignments and automatically generated KEGG pathways.

Comparisons to the *G. hirsutum* ESTs

For comparative analysis of fiber cDNAs between *G. barbadense* and *G. hirsutum*, 297,214 ESTs from *G. hirsutum* released in NCBI were downloaded in FASTA format and saved on a local computer. Tblastx program was used to screen for differential genes between *G. barbadense* and *G. hirsutum* with an expectation value of 1e-10. Differential genes then were assigned a putative function using Blastx against the nr protein database.

Large-scale discovery of InDels between/within *G. barbadense* and *G. hirsutum* ESTs

As of Jan. 20, 2012, approximately 414,271 cotton EST sequences were available in Genbank ESTs database (<http://www.ncbi.nlm.nih.gov/dbEST/>). Of them, 329,749 ESTs from the two tetraploid cultivated cotton species, with 297,214 from *G. hirsutum* and 32,525 from *G.*

barbadense (11,446 publically available in Genbank, 21,079 from our study), were assigned respectively as two distinct data sets for mining all possible InDels loci. *In silico* (virtual) PCR strategy was used to predict the possible InDel difference among orthologous and/or homoelogenous loci between/within *G. barbadense* and *G. hirsutum*. In detail, each *G. barbadense* EST was first randomly cut into several segments about 300 bp for designing nested PCR primer pairs, which ensured the amplified regions to cover the whole EST sequence. Then, the set of primer pairs from *G. barbadense* EST sequences were run against the *G. hirsutum* EST sequences dataset based on *in silico* PCR analysis with a threshold less than 3 mismatch bases. At last, PCR products at given region with different size were used for mining potential InDel difference among orthologous and/or homoelogenous loci between/within *G. barbadense* and *G. hirsutum*. As a result, InDel size larger than 5 bp was preferentially selected to confirm the reality by the gel electrophoresis combined with sequencing analysis, and homology analysis against previous reported genes associated with secondary wall synthesis of *Arabidopsis thaliana* trichomes [61-65] were performed by querying The Arabidopsis Information Resource (TAIR) database using Blastx alignment program by an E-value cutoff of 1e-5.

Forward and reverse flanking primer pairs based on *G. barbadense* ESTs were designed using Primer3 [66] by running the software in a batch mode. The primers varied in length from 18 to 20 bp (the optimal length 20 bp), with GC contents varying between 45% and 65% (50% GC content optimal). The lengths for target amplicon varied uniformly from 100 to 250 bp, and melting temperatures ranged from 57°C to 62°C with an optimal temperature of 58°C. All InDel primer pairs were synthesized by GenScript Inc. (Nanjing, China).

Hai7124 (*G. barbadense*) and TM-1 (genetic standard line in *G. hirsutum*) were used as parents for detecting orthologous and/or homoelogenous loci polymorphisms between/within *G. barbadense* and *G. hirsutum*, with the two diploid progenitors, *G. herbaceum* and *G. raimondii*, as controls. The genomic DNA extraction followed that of Paterson et al. [67]. The InDels were amplified by a PTC-225 machine (MJ Research, USA), and gel electrophoresis of the amplicon was performed according to the methods described by Zhang et al. (2000) [68]. After *in silico* PCR analysis and gel electrophoresis confirmation, the accuracy of InDel loci was further evaluated by selecting at random the amplification products to sequence. For sequencing analysis, standard PCR reactions were performed using High-fidelity ExTaq DNA polymerase (TaKaRa Biotechnology Dalian Co., Ltd., China). The PCR products were cloned into the pMD18-T Vector (TaKaRa) according to the manufacturer's instructions and sequenced from plasmid DNA templates. At least three positive clones were

chosen to sequence. Sequencing was performed by GenScript Inc. (Nanjing, China).

Additional files

Additional file 1: Table S1. Functional annotation and classification summary for 8653 unigenes. Note: These unigenes were submitted to nr (non-redundant) protein database and assigned with GO (Gene Ontology) and KO (KEGG) terms.

Additional file 2: Table S2. Statistic analysis of KEGG classification with corresponding metabolism maps. Note: KO (KEGG) annotation and metabolism maps were performed with BLAST2GO. Classification showed in second level and third level.

Additional file 3: Figure S1. Experimental verification of candidate unigenes expressed specifically in *G. barbadense* using RT-PCR.

Additional file 4: Table S3. Function annotation of 408 putative *G. barbadense*-specific unigenes. Note: 408 unigenes without significant match to any sequence in the current *G. hirsutum* EST databases were identified and finished function annotation against nr (non-redundant) protein database.

Additional file 5: Table S4. Summary for putative Gb-Gh InDel loci by *in silico* analysis. Notes: The information on insert size both in *G. barbadense* (Gb) and *G. hirsutum* (Gh), and size range was supplied in the table.

Additional file 6: Table S5. 2,160 InDel markers developed by using InDel >=5 bp EST sequences between *G. barbadense* and *G. hirsutum*.

Additional file 7: Table S6. PCR amplification and banding patterns of randomly selected 90 InDel markers. Note: 1: No difference in tested accessions; 3: showed orthologous and/or homoelogenous loci polymorphism in tested accessions.

Additional file 8: Table S7. Function identification related to secondary wall synthesis using sequences detected InDels by blastx analysis with databases from Arabidopsis.

Competing interests

The authors declare that they have no competing interests.

Authors' contributions

Experiments were designed by WZG with suggestions from TZZ. Experiments were performed by YDL, LZ and LW. Bioinformatics analyses were performed by YDL and CW. LZ and XYX carried out experimental confirmation. YDL and WZG drafted the manuscript, and WZG revised the manuscript. All authors read and approved the final manuscript.

Acknowledgments

This program was financially supported in part by National Science Foundation in China (30730067, 30871558), and a project funded by the Priority Academic Program Development of Jiangsu Higher Education Institutions.

Received: 3 October 2012 Accepted: 6 March 2013

Published: 13 March 2013

References

1. Fryxell PA: A revised taxonomic interpretation of *Gossypium* L. (Malvaceae). *Rheede* 1992, **2**:108-165.
2. Han ZG, Guo WZ, Song XL, Zhang TZ: Genetic mapping of EST-derived microsatellites from the diploid *Gossypium arboreum* in allotetraploid cotton. *Mol Genet Genomics* 2004, **272**(3):308-327.
3. Rong J, Abbey C, Bowers JE, Brubaker CL, Chang C, Chee PW, Delmonte TA, Ding X, Garza JJ, Marler BS: A 3347-locus genetic recombination map of sequence-tagged sites reveals features of genome organization, transmission and evolution of cotton (*Gossypium*). *Genetics* 2004, **166**(1):389.
4. Guo W, Cai C, Wang C, Zhao L, Wang L, Zhang T: A preliminary analysis of genome structure and composition in *Gossypium hirsutum*. *BMC Genomics* 2008, **9**:314.

5. Yu Y, Yuan D, Liang S, Li X, Wang X, Lin Z, Zhang X: **Genome structure of cotton revealed by a genome-wide SSR genetic map constructed from a BC₁ population between *Gossypium hirsutum* and *G. barbadense*.** *BMC Genomics* 2011, **12**:15.
6. Wang CB, Guo WZ, Cai CP, Zhang TZ: **Characterization, development and exploitation of EST-derived microsatellites in *Gossypium raimondii* Ulbrich.** *Chin Sci Bull* 2006, **51**:557–561.
7. Guo W, Cai C, Wang C, Han Z, Song X, Wang K, Niu X, Wang C, Lu K, Shi B, et al: **A microsatellite-based, gene-rich linkage map reveals genome structure, function and evolution in *Gossypium*.** *Genetics* 2007, **176**(1):527–541.
8. Yin J, Guo W, Yang L, Liu L, Zhang T: **Physical mapping of the Rf₁ fertility-restoring gene to a 100 kb region in cotton.** *Theor Appl Genet* 2006, **112**(7):1318–1325.
9. Hu Y, Lu Y, Ma D, Guo W, Zhang T: **Construction and characterization of a bacterial artificial chromosome library for the A-genome of cotton (*G. arboreum* L.).** *J Biomed Biotechnol* 2010, **2010**: 457137.
10. Taliercio E, Boykin D: **Analysis of gene expression in cotton fiber initials.** *BMC Plant Biol* 2007, **7**(1):22.
11. Udall JA, Swanson JM, Haller K, Rapp RA, Sparks ME, Hatfield J, Yu Y, Wu Y, Dowd C, Arpat AB: **A global assembly of cotton ESTs.** *Genome Res* 2006, **16**:441–450.
12. Qureshi SN, Saha S, Kantety RV, Jenkins JN: **EST-SSR: a new class of genetic markers in cotton.** *J Cotton Sci* 2004, **8**:112–123.
13. Saha M, Mian M, Eujayl I, Zwonitzer J, Wang L, May G: **Tall fescue EST-SSR markers with transferability across several grass species.** *Theor Appl Genet* 2004, **109**(4):783–791.
14. Han Z, Wang C, Song X, Guo W, Gou J, Li C, Chen X, Zhang T: **Characteristics, development and mapping of *Gossypium hirsutum* derived EST-SSRs in allotetraploid cotton.** *Theor Appl Genet* 2006, **112**(3):430–439.
15. Taliercio E, Allen RD, Essenberg M, Klueva N, Nguyen H, Patil MA, Payton P, Millena ACM, Phillips AL, Pierce ML, et al: **Analysis of ESTs from multiple *Gossypium hirsutum* tissues and identification of SSRs.** *Genome* 2006, **49**(4):306–319.
16. Lv Y, Cai C, Wang L, Lin S, Zhao L, Tian L, Lv J, Zhang T, Guo W: **Mining, characterization, and exploitation of EST-derived microsatellites in *Gossypium barbadense*.** *Chinese Sci Bull* 2010, **55**(18):1889.
17. Lai D, Li H, Fan S, Song M, Pang C, Wei H, Liu J, Wu D, Gong W, Yu S: **Generation of ESTs for flowering gene discovery and SSR marker development in upland cotton.** *PLoS One* 2011, **6**(12):e28676.
18. Nguyen TB, Giband M, Brottier P, Risterucci AM, Lacape JM: **Wide coverage of the tetraploid cotton genome using newly developed microsatellite markers.** *Theor Appl Genet* 2004, **109**(1):167–175.
19. Abdurakhmonov IY, Abdullaev AA, Saha S, Buriev ZT, Arslanov D, Kuryazov Z, Mavlonov GT, Rizaeva SM, Reddy UK, Jenkins JN, et al: **Simple sequence repeat marker associated with a natural leaf defoliation trait in tetraploid cotton.** *J Hered* 2005, **96**(6):644–653.
20. Song X, Wang K, Guo W, Zhang J, Zhang T: **A comparison of genetic maps constructed from haploid and BC₁ mapping populations from the same crossing between *Gossypium hirsutum* L. and *Gossypium barbadense* L.** *Genome* 2005, **48**(3):378–390.
21. Frelichowski JJ, Palmer MB, Main D, Tomkins JP, Cantrell RG, Stelly DM, Yu J, Kohel RJ, Ulloa M: **Cotton genome mapping with new microsatellites from Acala 'Maxxa' BAC-ends.** *Mol Genet Genomics* 2006, **275**(5):479–491.
22. Paterson AH, Saranga Y, Menz M, Jiang CX, Wright RJ: **QTL analysis of genotype x environment interactions affecting cotton fiber quality.** *Theor Appl Genet* 2003, **106**(3):384–396.
23. Shen Q, Liu DS, Gao Y, Chen Y: **Surface properties of bamboo fiber and a comparison with cotton linter fibers.** *Colloids Surf B Biointerfaces* 2004, **35**(3–4):193–195.
24. Guo WZ, Zhang TZ, Ding YZ, Zhu YC, Shen XL, Zhu XF: **Molecular marker assisted selection and pyramiding of two QTLs for fiber strength in upland cotton.** *Acta Genetica Sinica* 2005, **32**(12):1275–1285.
25. Park YH, Alabady MS, Ulloa M, Sickler B, Wilkins TA, Yu J, Stelly DM, Kohel RJ, El-Shihy OM, Cantrell RG: **Genetic mapping of new cotton fiber loci using EST-derived microsatellites in an interspecific recombinant inbred line cotton population.** *Mol Genet Genomics* 2005, **274**(4):428–441.
26. Ulloa M, Saha S, Jenkins JN, Meredith WJ, McCarty JJ, Stelly DM: **Chromosomal assignment of RFLP linkage groups harboring important QTLs on an intraspecific cotton (*Gossypium hirsutum* L.) Joinmap.** *J Hered* 2005, **96**(2):132–144.
27. Grover CE, Yu Y, Wing RA, Paterson AH, Wendel JF: **A phylogenetic analysis of Indel dynamics in the cotton genus.** *Mol Biol Evol* 2008, **25**(7):1415–1428.
28. Van Deynze A, Stoffel K, Lee M, Wilkins TA, Kozik A, Cantrell RG, Yu JZ, Kohel RJ, Stelly DM: **Sampling nucleotide diversity in cotton.** *BMC Plant Biol* 2009, **9**:125.
29. Ganai MW, Altmann T, Roder MS: **SNP identification in crop plants.** *Curr Opin Plant Biol* 2009, **12**(2):211–217.
30. Thiel T, Michalek W, Varshney RK, Graner A: **Exploiting EST databases for the development and characterization of gene-derived SSR-markers in barley (*Hordeum vulgare* L.).** *Theor Appl Genet* 2003, **106**(3):411–422.
31. Ma DP, Liu HC, Tan H, Creech RG, Jenkins JN, Chang YF: **Cloning and characterization of a cotton lipid transfer protein gene specifically expressed in fiber cells.** *Biochim Biophys Acta* 1997, **1344**:111–114.
32. Hu GH, Yu SX, Fan SL, Song MZ: **Cloning and expressing of a gene encoding cytosolic copperEinc superoxide dismutase in the Upland cotton.** *Agri Sci China* 2007, **6**(5):536–544.
33. John ME: **Structural characterization of genes corresponding to cotton fiber mRNA, E6: reduced E6 protein in transgenic plants by antisense gene.** *Plant Mol Biol* 1996, **30**(2):297–306.
34. Solbak AI, Richardson TH, McCann RT, Kline KA, Bartnek F, Tomlinson G, Tan X, Parra-Gessert L, Frey GJ, Podar M, et al: **Discovery of pectin-degrading enzymes and directed evolution of a novel pectate lyase for processing cotton fabric.** *J Biol Chem* 2005, **280**(10):9431.
35. Xie DY, Sharma SB, Paiva NL, Ferreira D, Dixon RA: **Role of anthocyanidin reductase, encoded by BANYULS in plant flavonoid biosynthesis.** *Science* 2003, **299**(5605):396.
36. Pear JR, Kawagoe Y, Schreckengost WE, Delmer DP, Stalker DM: **Higher plants contain homologs of the bacterial celA genes encoding the catalytic subunit of cellulose synthase.** *Proc Natl Acad Sci* 1996, **93**(22):12637–12642.
37. Jacob-Wilk D, Kurek I, Hogan P, Delmer DP: **The cotton fiber zinc-binding domain of cellulose synthase A1 from *Gossypium hirsutum* displays rapid turnover in vitro and in vivo.** *Proc Natl Acad Sci* 2006, **103**(32):12191–12196.
38. Betancur L, Singh B, Rapp RA, Wendel JF, Marks MD, Roberts AW, Haigler CH: **Phylogenetically distinct cellulose synthase genes support secondary wall thickening in *Arabidopsis* shoot trichomes and cotton fiber.** *J Integr Plant Biol* 2010, **52**(2):205–220.
39. Huang GQ, Xu WL, Gong SY, Li B, Wang XL, Xu D, Li XB: **Characterization of 19 novel cotton FLA genes and their expression profiling in fiber development and in response to phytohormones and salt stress.** *Physiol Plant* 2008, **134**(2):348–359.
40. Liu D, Tu L, Li Y, Wang L, Zhu L, Zhang X: **Genes encoding fasciclin-like arabinogalactan proteins are specifically expressed during cotton fiber development.** *Plant Mol Biol Rep* 2008, **26**(2):98.
41. Gong SY, Huang GQ, Sun X, Li P, Zhao LL, Zhang DJ, Li XB: **GhAGP31, a cotton non-classical arabinogalactan protein, is involved in response to cold stress during early seedling development.** *Plant Biol (Stuttg)* 2012, **14**(3):447–457.
42. Trainin T, Shmuel M, Delmer DP: **In vitro prenylation of the small gtpase Rac13 of cotton.** *Plant Physiol* 1996, **112**(4):1491–1497.
43. Zhang D, Hrmova M, Wan CH, Wu C, Balzen J, Cai W, Wang J, Densmore LD, Fincher GB, Zhang H, et al: **Members of a new group of chitinase-like genes are expressed preferentially in cotton cells with secondary walls.** *Plant Mol Biol* 2004, **54**(3):353–372.
44. Brill E, van Thournout M, White RG, Llewellyn D, Campbell PM, Engelen S, Ruan YL, Arioli T, Furbank RT: **A novel isoform of sucrose synthase is targeted to the cell wall during secondary cell wall synthesis in cotton fiber.** *Plant Physiol* 2011, **157**(1):40–54.
45. Legeai F, Malpel S, Montagne N, Monsempes C, Cousserans F, Merlin C, Francois MC, Maibeche-Coisne M, Gavory F, Poulain J, et al: **An expressed sequence tag collection from the male antennae of the Noctuid moth *Spodoptera littoralis*: a resource for olfactory and pheromone detection research.** *BMC Genomics* 2011, **12**:86.
46. Yuan D, Tu L, Zhang X: **Generation, annotation and analysis of first large-scale expressed sequence tags from developing fiber of *Gossypium barbadense* L.** *PLoS One* 2011, **6**(7):e22758.
47. Orford SJ, Timmis JN: **Expression of a lipid transfer protein gene family during cotton fibre development.** *Biochim Biophys Acta* 2000, **1483**:275–284.
48. Mills RE, Luttig CT, Larkins CE, Beauchamp A, Tsui C, Pittard WS, Devine SE: **An initial map of insertion and deletion (INDEL) variation in the human genome.** *Genome Res* 2006, **16**(9):1182–1190.
49. Ogurtsov AY, Sunyaev S, Kondrashov AS: **Indel-based evolutionary distance and mouse-human divergence.** *Genome Res* 2004, **14**(8):1610–1616.

50. Liu F, Xu W, Tan L, Xue Y, Sun C, Su Z: **Case study for identification of potentially indel-caused alternative expression isoforms in the rice subspecies japonica and indica by integrative genome analysis.** *Genomics* 2008, **91**(2):186–194.
51. Kaur S, Francki MG, Forster JW: **Identification, characterization and interpretation of single-nucleotide sequence variation in allopolyploid crop species.** *Plant Biotechnol J* 2012, **10**(2):125–138.
52. Brown DM, Zeef LA, Ellis J, Goodacre R, Turner SR: **Identification of novel genes in *Arabidopsis* involved in secondary cell wall formation using expression profiling and reverse genetics.** *Plant cell* 2005, **17**:2281–2295.
53. Persson S, Wei H, Milne J, Page GP, Somerville CR: **Identification of genes required for cellulose synthesis by regression analysis of public microarray data sets.** *Proc Acad Sci USA* 2005, **102**:8633–8638.
54. Jiang JX, Zhang TZ: **Extraction of total RNA in cotton tissues with CTAB-acidic phenolic method.** *Cotton Sci* 2003, **15**(3):166–167.
55. Ewing B, Hillier L, Wendl MC, Green P: **Base-calling of automated sequencer traces using phred I. Accuracy assessment.** *Genome Res* 1998, **8**(3):175–185.
56. Huang X, Madan A: **CAP3: A DNA sequence assembly program.** *Genome Res* 1999, **9**(9):868.
57. Altschul SF, Madden TL, Schaffer AA, Zhang J, Zhang Z, Miller W, Lipman DJ: **Gapped BLAST and PSI-BLAST: a new generation of protein database search programs.** *Nucleic Acids Res* 1997, **25**:3389–3402.
58. Gene Ontology Consortium: **The Gene Ontology (GO) project in 2006.** *Nucleic Acids Res* 2006, **34**(Database issue):D322–D6.
59. Conesa A, Gotz S: **Blast2GO: A comprehensive suite for functional analysis in plant genomics.** *Intl J Plant Genomics* 2008, **2008**:619832.
60. Kanehisa M, Goto S: **KEGG: Kyoto Encyclopedia of Genes and Genomes.** *Nucleic Acids Res* 2000, **28**:27–30.
61. Brown DM, Zhang Z, Stephens E, Dupree P, Turner SR: **Characterization of IRX10 and IRX10-like reveals an essential role in glucuronoxylan biosynthesis in *Arabidopsis*.** *Plant J* 2009, **57**(4):732–746.
62. Lee C, O'Neill MA, Tsumuraya Y, Darvill AG, Ye ZH: **The irregular xylem9 mutant is deficient in xylan xylosyltransferase activity.** *Plant Cell Physiol* 2007, **48**(11):1624–1634.
63. Wu AM, Hornblad E, Voxeur A, Gerber L, Rihouey C, Lerouge P, Marchant A: **Analysis of the *Arabidopsis* IRX9/IRX9-L and IRX14/IRX14-L pairs of glycosyltransferase genes reveals critical contributions to biosynthesis of the hemicellulose glucuronoxylan.** *Plant Physiol* 2010, **153**(2):542–554.
64. Zhong R, Pena MJ, Zhou GK, Nairn CJ, Wood-Jones A, Richardson EA, Morrison WR, Darvill AG, York WS, Ye ZH: ***Arabidopsis* fragile fiber8, which encodes a putative glucuronyltransferase, is essential for normal secondary wall synthesis.** *Plant Cell* 2005, **17**(12):3390–3408.
65. Zhong R, Lee C, Ye ZH: **Evolutionary conservation of the transcriptional network regulating secondary cell wall biosynthesis.** *Trends Plant Sci* 2010, **15**(11):625–632.
66. Rozen S, Skaletsky H: **Primer3 on the WWW for general users and for biologist programmers.** *Methods Mol Biol* 2000, **132**:365–386.
67. Paterson A, Brubaker C, Wendel J: **A rapid method for extraction of cotton (*Gossypium* spp.) genomic DNA suitable for RFLP or PCR analysis.** *Plant Mol Biol Rep* 1993, **11**(2):122–127.
68. Zhang J, Wu YT, Guo WZ, Zhang TZ: **Fast screening of microsatellite markers in cotton with PAGE/silver staining.** *Acta Gossypii Sinica* 2000, **12**(5):267–269.

doi:10.1186/1471-2164-14-170

Cite this article as: Lv et al.: Characterization of expressed sequence tags from developing fibers of *Gossypium barbadense* and evaluation of insertion-deletion variation in tetraploid cultivated cotton species. *BMC Genomics* 2013 **14**:170.

Submit your next manuscript to BioMed Central and take full advantage of:

- Convenient online submission
- Thorough peer review
- No space constraints or color figure charges
- Immediate publication on acceptance
- Inclusion in PubMed, CAS, Scopus and Google Scholar
- Research which is freely available for redistribution

Submit your manuscript at
www.biomedcentral.com/submit

