

RESEARCH ARTICLE

Open Access

Functional conservation of a forebrain enhancer from the elephant shark (*Callorhynchus milii*) in zebrafish and mice

Ryan B MacDonald¹, Mélanie Debais-Thibaud¹, Kyle Martin^{1,3}, Luc Poitras¹, Boon-Hui Tay², Byrappa Venkatesh² and Marc Ekker*¹

Abstract

Background: The phylogenetic position of the elephant shark (*Callorhynchus milii*) is particularly relevant to study the evolution of genes and gene regulation in vertebrates. Here we examine the evolution of *Dlx* homeobox gene regulation during vertebrate embryonic development with a particular focus on the forebrain. We first identified the elephant shark sequence orthologous to the URE2 *cis*-regulatory element of the mouse *Dlx1/Dlx2* locus (herein named CmURE2). We then conducted a comparative study of the sequence and enhancer activity of CmURE2 with that of orthologous regulatory sequences from zebrafish and mouse.

Results: The CmURE2 sequence shows a high percentage of identity with its mouse and zebrafish counterparts but is overall more similar to mouse URE2 (MmURE2) than to zebrafish URE2 (DrURE2). In transgenic zebrafish and mouse embryos, CmURE2 displayed enhancer activity in the forebrain that overlapped with that of DrURE2 and MmURE2. However, we detected notable differences in the activity of the three sequences in the diencephalon. Outside of the forebrain, CmURE2 shows enhancer activity in areas such as the pharyngeal arches and dorsal root ganglia where its' counterparts are also active.

Conclusions: Our transgenic assays show that part of the URE2 enhancer activity is conserved throughout jawed vertebrates but also that new characteristics have evolved in the different groups. Our study demonstrates that the elephant shark is a useful outgroup to study the evolution of regulatory mechanisms in vertebrates and to address how changes in the sequence of *cis*-regulatory elements translate into changes in their regulatory activity.

Background

Changes in gene expression patterns, via changes in *cis*-regulatory elements, or in the *trans*-acting factors binding to these elements, has contributed to the development of novel morphological structures during evolution [1]. The high degree of conservation in the coding region of genes necessary to establish the animal body plan has been extensively documented. The growing wealth of metazoan genome sequence data has also provided evidence for the conservation of sequences outside the coding regions of genes, the Conserved Non-coding Elements (CNEs) that tend to be located close to developmental genes [2,3]. However, whether the conservation of

CNE sequence is necessary for any conservation of CNE regulatory activity remains debateable. Recent studies have identified regulatory sequences with very little sequence conservation that have the ability to activate transcription in highly similar tissues [4-7]. Furthermore, highly conserved regulatory sequences can drive transcription in highly divergent patterns [8-10]. Therefore, it remains challenging to predict regulatory activity based solely upon sequence similarity, or vice versa. Currently, a great effort has been made in systematically characterizing the CNEs in the mouse genome allowing for comparison with other model and non-model organisms [11].

Dlx homeobox genes of vertebrates are involved in the development of the forebrain, visceral arches, sensory organs, and limbs [12]. They are organized as three convergently transcribed bigene clusters, present in most

* Correspondence: mekker@uottawa.ca

¹ Center for Advanced Research in Environmental Genomics, Department of Biology, University of Ottawa, Ottawa, ON, K1N 6N5, Canada
Full list of author information is available at the end of the article

jawed vertebrates: *Dlx1/Dlx2*, *Dlx3/Dlx4* and *Dlx5/Dlx6* [13]. The three bigene clusters most likely originate from the duplications of an ancestral bigene cluster occurring as whole genome duplication events throughout vertebrate evolution [14]. A similar bigene arrangement of *Dlx* genes has been reported in the ascidian *Ciona intestinalis* [15], suggesting that the ancestral bigene existed prior to vertebrate radiation. The bigene organization of *Dlx* genes appears to be important for the concerted expression of the two genes within each cluster as *cis*-regulatory elements (CREs) have been identified in the relatively short (~3-15 kb) intergenic regions separating the two genes of each cluster [16,17].

Of the six *Dlx* genes found in tetrapod vertebrates, the *Dlx1/Dlx2* and *Dlx5/Dlx6* clusters are involved in forebrain development. We have previously reported three CREs from the intergenic regions of these two bigene clusters in mouse: I12b from the *Dlx1/Dlx2* locus and I56i and I56ii from the *Dlx5/Dlx6* locus [16,17]. However, CREs regulating *Dlx* expression can also be found outside the intergenic region and we reported one such CRE named Upstream regulatory element 2 (URE2), located approximately 12 kb upstream of the mouse *Dlx1* gene [18]. We have previously shown some degree of conservation in the function of some *Dlx* CREs between mouse and zebrafish but it is not clear when these CREs and their associated regulatory mechanisms originated during vertebrate evolution [16,17].

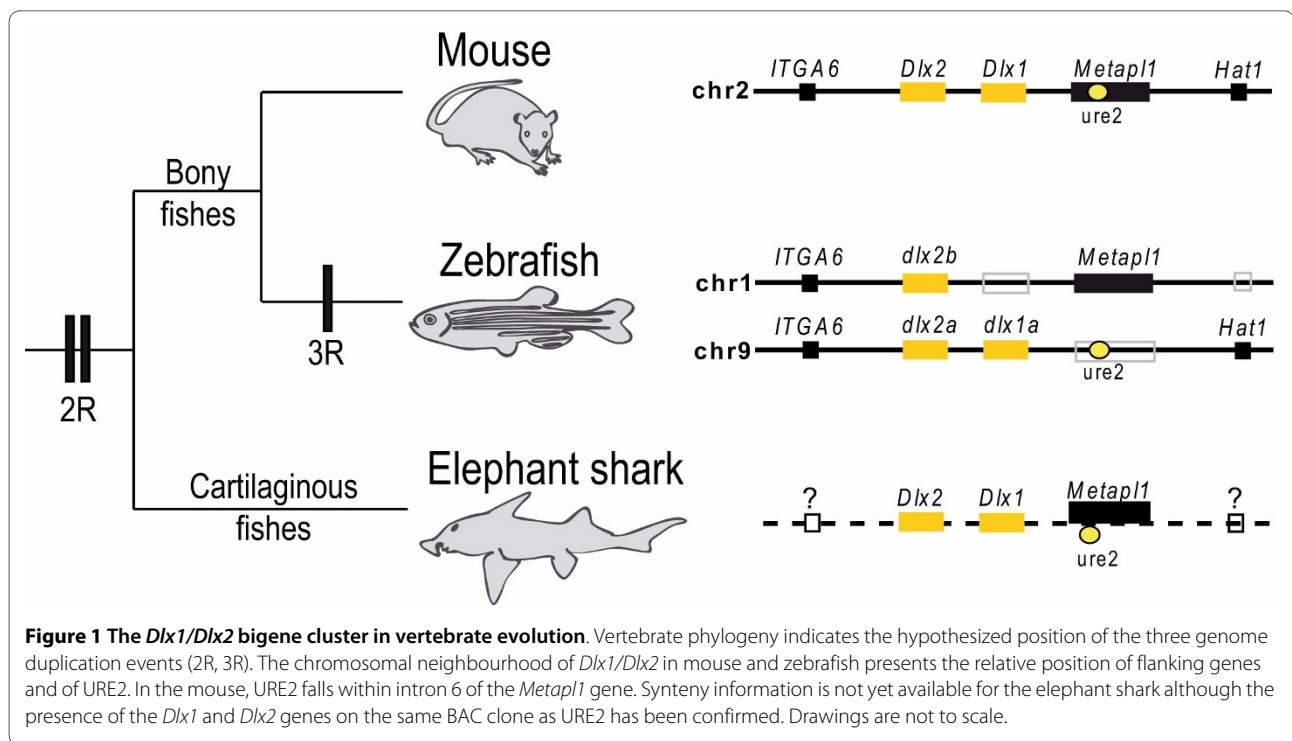
As a cartilaginous fish, the elephant shark (*Callorhynchus milii*) occupies an interesting phylogenetic position as the sister group to bony fishes and tetrapods. Its relatively small genome of 910 Mbp and the availability of a low coverage genome (~1.4 ×) make this species a useful cartilaginous fish model to examine conservation of CREs [19]. Large scale comparison of the conserved non-coding regions between the elephant shark and the human and/or zebrafish genomes has revealed that more CNEs are shared between human and elephant shark than between human and zebrafish [19,20]. These data are consistent with the observation of greater conservation in gene synteny between human and elephant shark genomes than between human and zebrafish genomes [19]. This may seem counterintuitive given that mammals share a more recent common ancestor with teleost fishes than with cartilaginous fishes. However, this situation likely results from the 'fish-specific' whole genome duplication event that occurred before the teleost radiation and led to loss or modification of CNEs and a high level of genome re-organization in this group [19,21]. Detailed analysis of the conservation of CNEs associated with the *Hox* clusters in the elephant shark, human, and fugu yielded various hypotheses on the possible correlation between the level of sequence conservation of vertebrate CNEs and their functional variation [21].

Here, we report the identification of an elephant shark sequence orthologous to the conserved regulatory element URE2 associated with *Dlx1* and *Dlx2* genes. Sequence comparisons show a high level of conservation within gnathostomes, with higher similarity between elephant shark and mouse URE2 than between elephant shark and zebrafish URE2. We show that the enhancer activity of the elephant shark URE2 (CmURE2) in transgenic mouse and zebrafish is highly similar to that of its orthologous mouse and zebrafish counterparts in transgenic assays. In addition, CmURE2 shows more similarity in sequence and function to the orthologous mouse sequence than to the zebrafish sequence, in agreement with the hypothesis of additional genome and gene regulation remodelling due to the subsequent teleost specific genome duplication.

Results

Sequence and synteny conservation near the *Dlx1/Dlx2* bigene cluster

The *Dlx* genes of most tetrapod vertebrates described thus far are organized as three *Dlx* bigene clusters. As a result of the whole genome duplication event occurring in ancestral teleost fish, several other *dlx* genes have been identified in zebrafish; (i) an additional *dlx1a/dlx2a* bigene cluster located on chromosome 9, and (ii) a *dlx2*-related gene, *dlx2b*, located on chromosome 1, which is not physically linked to a *dlx1*-like gene [22,23]. Conserved synteny between the *dlx*-containing regions of zebrafish chromosomes 1 and 9 supports the hypothesis that *dlx1a/dlx2a* and *dlx2b* arose from the duplication of a large chromosomal region, followed by the loss of the *dlx1*-like gene from the b cluster. Furthermore, the synteny is also conserved with a region of mouse chromosome 2 that contains the nearby genes *ITGA6*, *Metap11* and *Hat1* (Figure 1). The presence of CREs within these genomic regions may contribute to the conservation of these synteny blocks [24-26]. In the mouse, the MmURE2 CRE, previously reported to be involved in *Dlx1/Dlx2* regulation and located 12 kb upstream of *Dlx1*, falls within the sixth intron of the *Metap11* gene [18]. This conserved sequence is able to drive reporter expression in the mouse forebrain [11,18,27]. In zebrafish, DrURE2 is located in a similar position upstream of the *dlx1a* gene but the unique *metap11* ortholog is found in synteny with *dlx2b* on chromosome 1. No URE2-like sequence can be identified on zebrafish chromosome 1 (see synteny description at [28]) which rules out the possibility of a URE2 enhancer-like sequence acting on the *metap11* gene and suggests that the remaining *dlx2b* gene is not under the regulation of a URE2 sequence, except if the sequence has been highly remodelled after the duplication while still retaining its function. This, as well as the loss of other regulatory elements associated with the



dlx1a-dlx2a bigene cluster [17], may account for the reduced domains of expression in comparison to *dlx2a* [29,30].

To investigate the corresponding genomic region in a cartilaginous fish species, we searched the elephant shark genome for *Dlx* - and URE2-like sequences. We found independent reads including putative Cm*Dlx1*, Cm*Dlx2*, Cm*Metap1*, CmURE2 as well as CmI12a, a second *Dlx1/Dlx2* regulatory element. After screening a BAC library for the putative Cm*Dlx1* sequence, we isolated a BAC clone from which we could also PCR-amplify Cm*Dlx2*, the two putative enhancer sequences, CmURE2 and CmI12a, and exons 9 and 10 of the Cm*Metap1* gene (Figure 1).

We produced an alignment of the elephant shark, mouse, and zebrafish URE2 sequences (1017 bp, Figure 2), approximately half of which could be aligned with no ambiguity (517 bp). The CmURE2 sequence closely resembles its mouse and zebrafish counterparts (Figure 2) with 85% identity between MmURE2 and CmURE2, 75% identity between MmURE2 and DrURE2, and 73% identity between DrURE2 and CmURE2. We then aligned the orthologous URE2 sequences extracted from the Ensembl Genome Browser (release 56, [31]) for three other tetrapod species (a frog, *Xenopus tropicalis* ; a lizard, *Anolis carolinensis* ; a bird, *Gallus gallus*) and three other teleost species (the medaka, *Oryzias latipes* ; and two pufferfish, *Takifugu rubripes* and *Tetraodon nigroviridis*) (Additional File 1). Again, the elephant shark URE2 sequence was significantly (t-test; $p < 0.05$) more

similar to tetrapod sequences (mean: 82.5%) than to teleost sequences (mean: 71.5%). When testing for relative substitution rates with the elephant shark as an outgroup, the null hypothesis of equivalent substitution rates could be confidently rejected ($p = 0$) when comparing zebrafish and mouse URE2 sequences or medaka and *Xenopus* URE2. In both cases a higher substitution rates was obtained in teleosts compared to tetrapods. These results strongly suggest that the elephant shark sequence is more similar to tetrapod sequences than to teleost sequences, most probably due to higher mutation rates in the latter clade.

The elephant shark URE2 sequence acts as a forebrain regulatory element in transgenic zebrafish and mice

To determine if the CmURE2 sequence can act as a regulatory element and to compare its activity with its zebrafish and mouse counterparts, we prepared a series of reporter constructs in which the URE2 sequences are placed upstream of a cassette containing a β -globin minimal promoter and either the *GFP* or *lacZ* reporter gene. The resulting constructs were tested in both transgenic (Tg) zebrafish and mice.

In zebrafish, the Tg-DrURE2 drove GFP expression in the telencephalon and diencephalon starting at approximately 24 hpf (Figure 3A). This expression was observed in two independent lines of transgenic zebrafish and persisted until 96 hpf (Figure 3B-F), a time where GFP expression was also noted weakly in the pharyngeal arches (Figure 3E, F). Similarly, the CmURE2 sequence

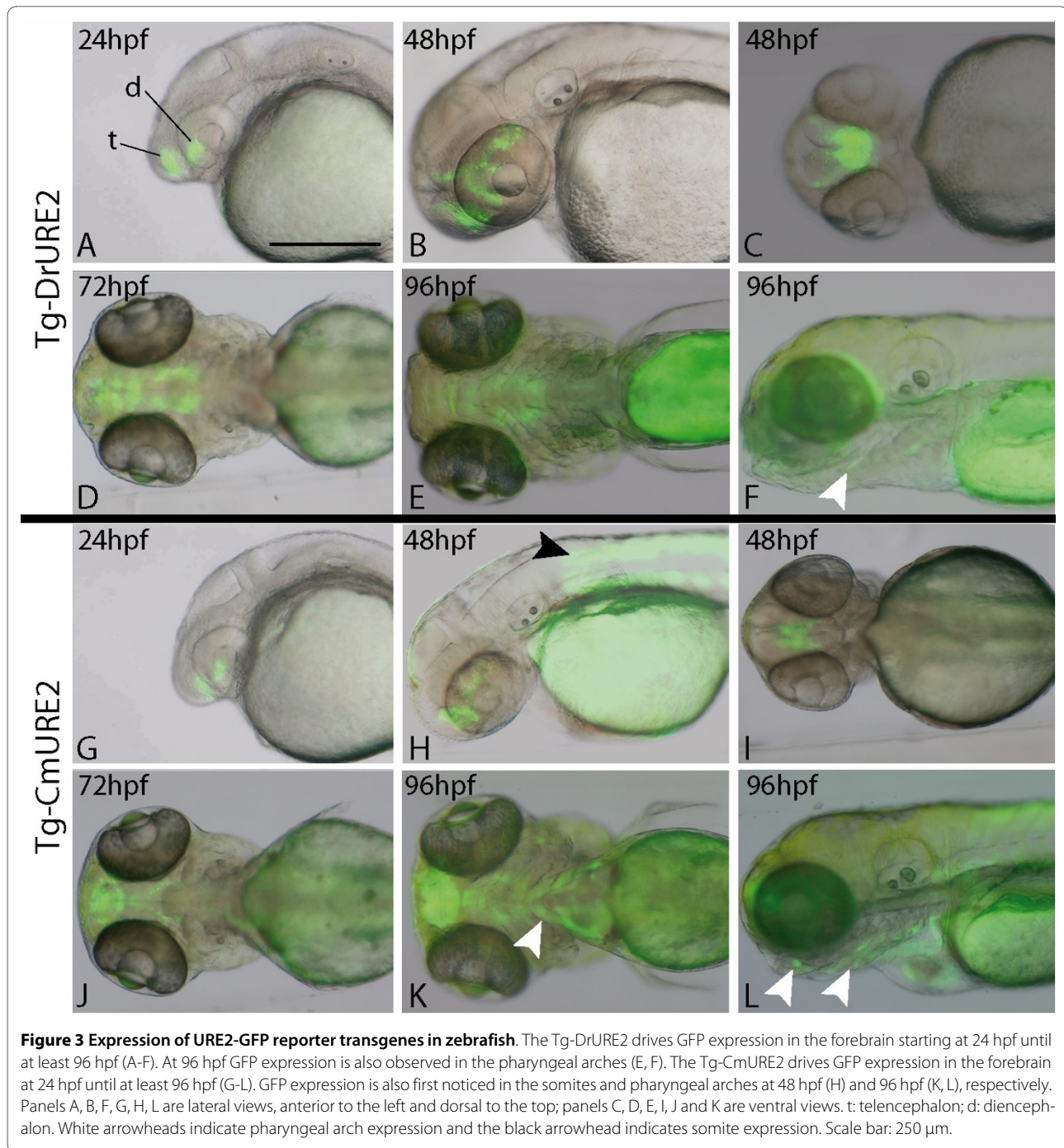


Figure 2 Sequence alignment of the elephant shark (Cm), mouse (Mm) and zebrafish (Dr) URE2 sequences. Alignable regions are highlighted grey, identical sequences (> 10 bp) between all three species are boxed, and the primers used to amplify these sequences are highlighted orange.

targeted GFP expression to the forebrain of zebrafish embryos and larvae from 24 hpf until at least 96 hpf (Figure 3G-3K), with pharyngeal arch expression of the reporter transgene observed at the later time points in two independent transgenic lines (Figure 3K, L). Overall, the examination of live embryos indicated that the spatial distribution of the GFP protein was generally similar for both constructs suggesting similar activities for the elephant shark and zebrafish sequences in the brain and visceral arches (Table 1). One site of Tg-CmURE2 activity that is not observed with Tg-DrURE2, and is not consistent with endogenous *dlx1a* or *dlx2a* expression, is the somites at 2 dpf (Figure 3H, black arrowhead) continuing until at least 4 dpf (Figure 3L).

We then examined the activity of the URE2 elements in the forebrain in greater detail and compared this with the endogenous expression of the zebrafish *dlx1a/2a* genes. The endogenous *dlx* expression domains correspond to the subpallium of the telencephalon and to specific regions of the diencephalon (preoptic area, prethalamus, and hypothalamus) (Figure 4A-C) [30]. Comparative *in*

situ hybridization analysis of the *GFP* transcripts identifies highly comparable expression with endogenous *dlx2a* (Figure 4A, B) and *GFP* in Tg-DrURE2 embryos (Figure 4D, E). However differences in transgene expression could be pointed in the Tg-CmURE2 line with no apparent detection of *GFP* expression in the prethalamus, as well as very restricted expression in the hypothalamus (Figure 4H, I). Anti-GFP immunohistochemistry on sections of transgenic embryos confirmed that the prethalamus expression was completely absent from Tg-CmURE2 embryos, while expression in the pre-optic area is comparable between Tg-CmURE2 and Tg-DrURE2 (Figure 4F, J). More posterior in the hypothalamus, the transgene was expressed only in a restricted lateral domain in the Tg-CmURE2 transgenic line, while the GFP expression domain was larger in the Tg-DrURE2 line (Figure 4G, K). Immuno-localization of the GFP in these two lines also allowed us to detect GFP in the muscles associated to the visceral arches, as well as muscles in the tail (data not shown), consistent with the fluorescence patterns described in Figure 3. Examination of primary transgenic



zebrafish obtained with a similar construct containing the mouse MmURE2 sequence indicates that it behaves similarly to its elephant shark and zebrafish counterparts with expression in the telencephalic and diencephalic domains (Additional File 2). Notably, the transgene could also be detected in visceral arches at 5 dpf, in a pattern similar to that observed for Tg-DrURE2 and Tg-CmURE2 (Additional File 2C).

Similar constructs using *LacZ* as the reporter gene were tested in primary transgenic mouse embryos at E11.5. The three URE2 enhancers had very similar activities in the forebrain (Figure 5; Table 1). All three URE2 sequences targeted expression to the telencephalon and diencephalon (Figure 5A-I). Forebrain expression of the reporter constructs was observed in 4/5 and 4/4 primary transgenic embryos obtained with CmURE2-*lacZ* and DrURE2-*lacZ*, respectively (Additional File 3). Outside

Table 1: Summary of URE2 reporter gene expression patterns

	Tg-DrURE2					Tg-CmURE2					Tg-MmURE2	
	1 dpf	2 dpf	3 dpf	4 dpf	E11.5	1 dpf	2 dpf	3 dpf	4 dpf	E11.5	2-4 dpf	E11.5
Telencephalon	+	+	+	+	+	+	+	+	+	+	+	+
Diencephalon	+	+	+	+	+	+	+	+	+	+	+	+
Visceral arches	-	-	+	+	-	-	-	+	+	-	+	+
Dorsal root ganglia	na	na	na	na	-	na	na	na	na	+	na	+
Somite muscles	-	-	-	-	na	-	+	+	+	na	na	na
Fin/limb buds	-	-	-	-	-	-	-	-	-	-	na	+

Summary of reporter gene expression patterns under regulation by the zebrafish, elephant shark or mouse URE2 sequences (respectively Tg-DrURE2, Tg-CmURE2, Tg-MmURE2) in zebrafish embryos staged from 1 to 4 days post-fertilization (dpf) in case of stable transgenic lines, 2 to 4 dpf in case of primary transgenic expression (Tg-MmURE2) and in mouse embryos aged E11.5 (one stable transgenic line for Tg-MmURE2, primary transgenic expression for Tg-DrURE2 and Tg-CmURE2).

the forebrain, the mouse and elephant shark URE2 sequences showed more similarities in their activities compared to zebrafish URE2: both CmURE2 and MmURE2 could target expression to the dorsal root ganglia in primary transgenic embryos (CmURE2-lacZ, n = 1/5; Additional File 3) or in two independent transgenic lines (MmURE2-lacZ, Figure 5A and 19). The DrURE2-lacZ transgene was not expressed in the dorsal root ganglia (n = 0/4). The mouse URE2 element was the only one able to target expression to the branchial arches and to the apical ectodermal ridge of limb buds.

Discussion

Locus and sequence conservation among jawed vertebrates

In this study we identify a conserved regulatory region associated with *Dlx* genes in the elephant shark. Conserved synteny could not be precisely determined because the elephant shark genome is not assembled. However, the sequence identified as CmURE2 is located on the BAC clone containing the elephant shark *Dlx1*, *Dlx2* and *Metap11* genes, similar to what is observed in all other jawed vertebrates for which genomic data are available (Ensembl Release 56, [31]). The putative conservation of the bigene cluster organisation between bony vertebrates and cartilaginous fish is consistent with the hypothesis that an ancestral chordate bigene cluster has been duplicated twice before the radiation of jawed vertebrates [32,33]. The identification of a URE2 sequence in vicinity of the elephant shark *Dlx1* and *Dlx2* genes also indicates this locus was linked to these genes in the ancestor of all jawed vertebrates. A search for sequences

orthologous to this URE2 enhancer in species outside of jawed vertebrates did not yield any significant hit with the BLASTn tool from the NCBI sequence browser [34] or the BLAT tool in the UCSC genome browser [35] on the lamprey (*Petromyzon marinus*), tunicate (*Ciona intestinalis*) or lancelet (*Branchiostoma floridae*) genomes, even though *Dlx* genes have been identified in these organisms and bigene *Dlx* tandems are present in lamprey and tunicate [15,33,36]. The high level of URE2 sequence conservation observed in jawed vertebrates suggests that it has evolved under high evolutionary constraints and that its enhancer activity likely emerged in the jawed vertebrate ancestor, after divergence of the cyclostomes, i.e., more than 400 Myrs ago. Interestingly, this reflects the trend observed for a number of other vertebrate CNEs [5].

Enhancer activity, conservation, and variation

The most prominent expression domain of a transgene under the regulation of MmURE2 or DrURE2 has been shown to be the forebrain, more precisely in the ventral telencephalon and diencephalon, in agreement with the pattern of endogenous expression of *Dlx1* and *Dlx2* genes [17]. Both zebrafish transgenic lines obtained with DrURE2 and CmURE2 driving expression of GFP produced comparable expression patterns, suggesting the regulatory activity of these orthologous sequences in developing forebrain and visceral arches is likely to be conserved. This overall conservation of the enhancer activity, along with a high level of identity between the two sequences, implicates conservation of transcription binding sites allowing the CmURE2 to retain activity in

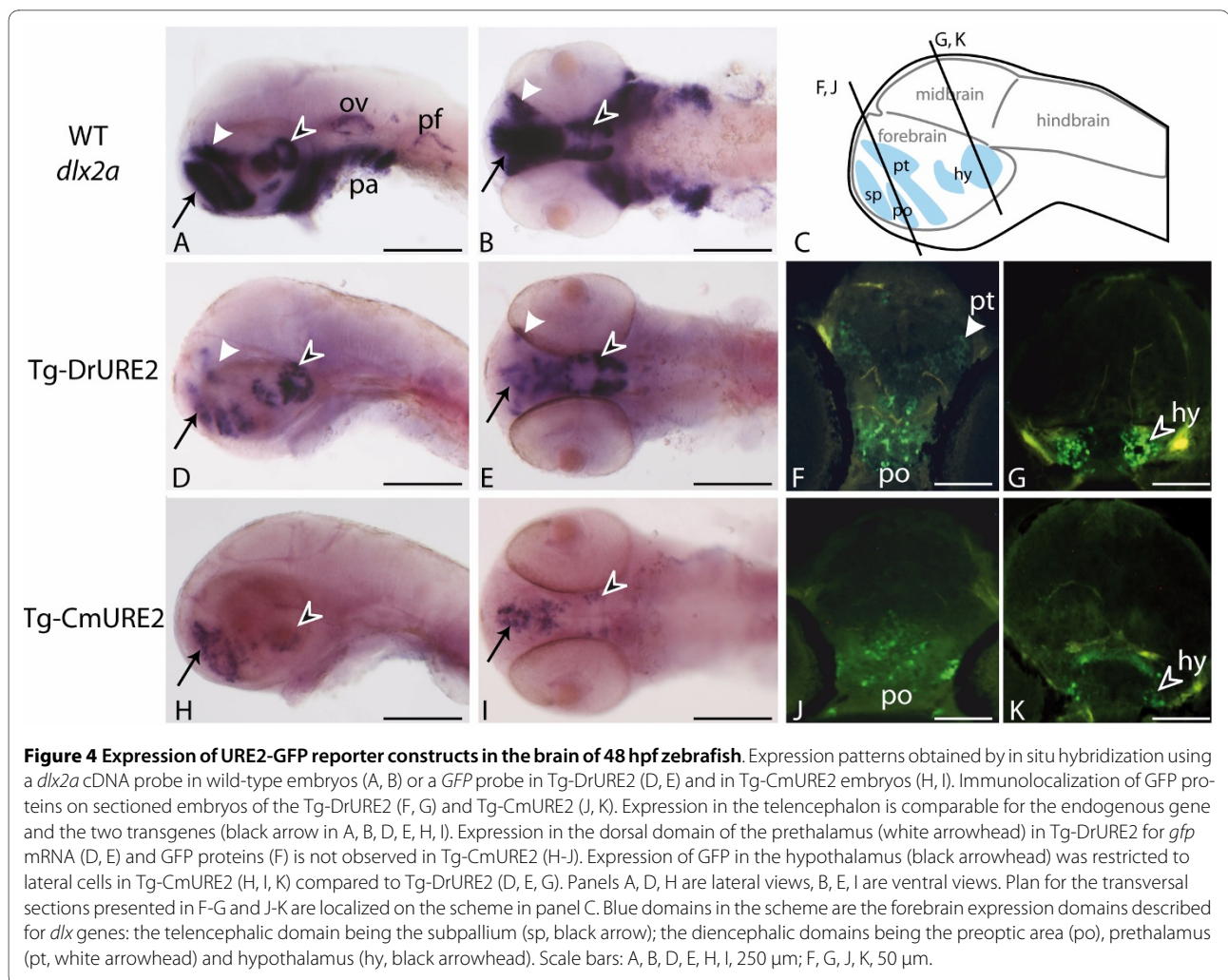


Figure 4 Expression of URE2-GFP reporter constructs in the brain of 48 hpf zebrafish. Expression patterns obtained by in situ hybridization using a *dlx2a* cDNA probe in wild-type embryos (A, B) or a GFP probe in Tg-DrURE2 (D, E) and in Tg-CmURE2 embryos (H, I). Immunolocalization of GFP proteins on sectioned embryos of the Tg-DrURE2 (F, G) and Tg-CmURE2 (J, K). Expression in the telencephalon is comparable for the endogenous gene and the two transgenes (black arrow in A, B, D, E, H, I). Expression in the dorsal domain of the prethalamus (white arrowhead) in Tg-DrURE2 for *gfp* mRNA (D, E) and GFP proteins (F) is not observed in Tg-CmURE2 (H-J). Expression of GFP in the hypothalamus (black arrowhead) was restricted to lateral cells in Tg-CmURE2 (H, I, K) compared to Tg-DrURE2 (D, E, G). Panels A, D, H are lateral views, B, E, I are ventral views. Plan for the transversal sections presented in F-G and J-K are localized on the scheme in panel C. Blue domains in the scheme are the forebrain expression domains described for *dlx* genes: the telencephalic domain being the subpallium (sp, black arrow); the diencephalic domains being the preoptic area (po), prethalamus (pt, white arrowhead) and hypothalamus (hy, black arrowhead). Scale bars: A, B, D, E, H, I, 250 μ m; F, G, J, K, 50 μ m.

the developing zebrafish and mouse brain. The results obtained with the DrURE2 transgenic zebrafish lines show that the activity of this enhancer recapitulates part of the *dlx1a/dlx2a* endogenous expression pattern in the forebrain. Similarly MmURE2 transgenic mouse lines recapitulate endogenous *Dlx1/Dlx2* expression in this domain [18]. Thus, the conservation of URE2 regulatory sequences correlates with conservation of their activity.

However, differences could be identified in the diencephalic expression domains (prethalamus and hypothalamus) between the two transgenic lines. These discrepancies suggest that while the overall activity is conserved, the URE2 enhancer also shows some degree of modularity across the vertebrate phylogeny. Accordingly, the differences between CmURE2 and DrURE2 sequences could account for the differential expression pattern in the prethalamus and hypothalamus between different vertebrate species, whereas these sequence differences do not modify the enhancer activity in the telencephalon. In turn, these results suggest that these two *Dlx* gene expression domains (telencephalon and dien-

cephalon), even though both regulated by a unique functional URE2 enhancer, are perhaps the result of two distinct genetic pathways.

The DrURE2 and CmURE2 sequences also drive expression in the developing telencephalon and diencephalon of transgenic mice, a pattern comparable to the endogenous MmURE2 enhancer. Again, this highlights the conservation of the regulatory cascade leading to *Dlx* gene expression in the developing forebrain of mice. In this species, the function of URE2 in the forebrain seems to be completely conserved despite variation in the sequences, which highly contrasts with our results from transgenic assays in zebrafish where expression in the diencephalon seems to be sensitive to sequence variations. Our results suggest that a distinct genetic pathway is specifically involved in teleost diencephalon development that would not be shared with mouse. This new pathway could have emerged after the additional genome duplication event occurring before teleosts radiation, which seeded many paralogous developmental genes that have the potential to be co-opted (or recruited) as new

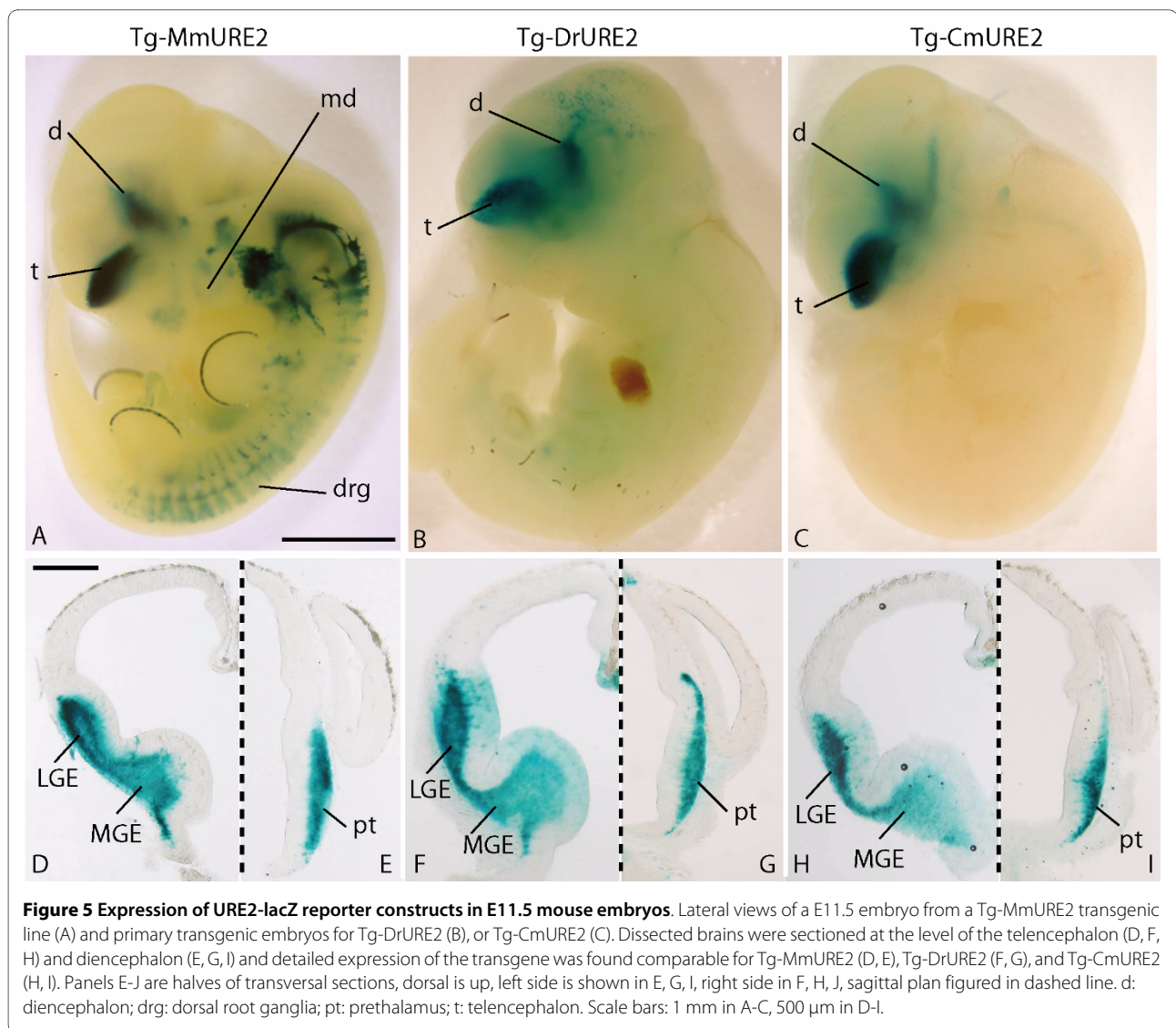


Figure 5 Expression of URE2-lacZ reporter constructs in E11.5 mouse embryos. Lateral views of a E11.5 embryo from a Tg-MmURE2 transgenic line (A) and primary transgenic embryos for Tg-DrURE2 (B), or Tg-CmURE2 (C). Dissected brains were sectioned at the level of the telencephalon (D, F, H) and diencephalon (E, G, I) and detailed expression of the transgene was found comparable for Tg-MmURE2 (D, E), Tg-DrURE2 (F, G), and Tg-CmURE2 (H, I). Panels E-J are halves of transversal sections, dorsal is up, left side is shown in E, G, I, right side in F, H, J, sagittal plan figured in dashed line. d: diencephalon; drg: dorsal root ganglia; pt: prethalamus; t: telencephalon. Scale bars: 1 mm in A-C, 500 μ m in D-I.

independent upstream signals interacting with the zebrafish URE2 enhancer. However, we cannot rule out the possibility that subtle changes in zebrafish transcription factor binding specificity may account for the apparent divergence of the CmURE2 enhancer function in the zebrafish forebrain, compared to the mouse forebrain.

The URE2 sequences studied here are also able to drive expression in the developing branchial arches. More specifically, the MmURE2 can drive expression in the hyoid arch mesenchyme in transgenic mice, while DrURE2 and CmURE2 did not produce any branchial signal in our primary transgenic embryos. DrURE2 and CmURE2, and possibly MmURE2, were able to drive GFP expression in muscles of the growing mandible and of the posterior-most visceral arches in transgenic zebrafish. The GFP fluorescence pattern obtained in zebrafish visceral arches (mandible and branchial arches shows expression in the muscles associated with the arches, rather than expres-

sion in the chondrogenic mesenchyme, where the *dlx* genes are known to be transcribed [37]. This expression pattern is unlikely to be an insertion artefact because it could be observed in two independent insertions for both DrURE2 and CmURE2 transgenic lines. GFP expression in arches muscles could be the result of endogenous URE2 activity that was not reported in previous studies on *dlx* gene expression patterns [37]. Alternatively, detection of GFP in these muscle cells could be the result of GFP stability in cell lineages derived from cells where *dlx* genes are endogenously transcribed.

Lineage-specific modifications may account for the differences observed in the branchial arches between mouse and zebrafish, such as the mammal-specific loss or teleost-specific gain of upstream signal targeting in the visceral arch mesenchyme. These hypotheses could be tested by biochemical and molecular techniques comparing the ability of different activators from the different

lineages to enhance expression in response to these signals on the orthologous CREs. In this respect, it will be interesting to characterize the various transcription factors that interact with the MmURE2 sequence and contribute to expression in the brain or visceral arches. In mouse assays, the Tg-MmURE2 and Tg-CmURE2 sequences were able to consistently drive expression not only in the developing brain, but also in the dorsal root ganglia. None of the Tg-DrURE2 primary embryos (n = 0/4) had expression in these structures, suggesting that MmURE2 and CmURE2 share some enhancer activity that has been lost by DrURE2 consistent with absence of *dlx1a/dlx2a* expression in dorsal root ganglia.

URE2 evolution in vertebrates

As no expression data is available from the elephant shark, we cannot correlate the CmURE2 enhancer activity to the endogenous *Dlx1* and *Dlx2* expression patterns. It is therefore difficult to propose an overview of the evolution of the URE2 enhancer in vertebrates. However, our results show that the genomic organisation of the *Dlx1/Dlx2* bigene cluster with a URE2 sequence in the vicinity is conserved amongst all jawed vertebrates. The three URE2 sequences coming either from a cartilaginous fish (the elephant shark), a teleost fish (the zebrafish), or a tetrapod (the mouse) are able to drive expression in the forebrain with apparent complete robustness. These results highlight the strong selective constraint that may have acted against the modification of the regulatory sequences and the *trans*-activating protein domains, which interact with these enhancers, during jawed vertebrate evolution. However our results also show that URE2 enhancer activity in visceral arches and diencephalon is only partially conserved and has accumulated evolutionary modifications leading to variations from one organism to another. In particular, the lack of regulatory activity of CmURE2 and DrURE2 in the visceral arches of the mouse could be the result of lineage-specific sequence modification in transcription factor binding sites during tetrapod evolution, possibly leading to modifications of the regulatory cascade involving the URE2-*Dlx1*-*Dlx2* module in the branchial arches.

Conclusions

As a chondryctyan, the elephant shark provides a useful model to carry out comparative studies with jawed vertebrates to evaluate the relative contributions of changes in coding sequences and in CREs. These changes may have led to morphological innovations, such as the tripartite brain and branchial arches of jawed vertebrates. The use of the elephant shark had been limited to comparative DNA sequence analysis [21]. Here, we have shown that CREs from the elephant shark can be successfully tested in teleost and tetrapod experimental models. Whereas

transgenes with elephant shark CREs cannot yet be tested endogenously, as transgenesis in this species has yet to be developed, it may be possible to obtain gene expression data in elephant shark for comparative purposes. Such expression studies would further increase the usefulness of the elephant shark in evolutionary developmental biology as an outgroup of bony vertebrates (zebrafish and mouse) showing not only a conserved genome structure but also, as highlighted here, conserved gene regulatory mechanisms.

Methods

Sequence identification and manipulation

The sequence of the previously identified regulatory sequence URE2 from the mouse was blasted against the 1.4 × coverage survey-sequencing data of the elephant shark genome [38]. One significant hit allowed us to identify the homologous sequence to the mouse URE2 (MmURE2) in the elephant shark genome (CmURE2). A BAC from the elephant shark genome library (IMCB_Eshark BAC library) was isolated by 3-step PCR screening of the pooled BAC DNA using primers for the elephant shark *Dlx1* gene (CTCCTCTCCCTTCAG-CAGCAG and ATTACCTGTGTCTGTGTGAGTCC). This BAC was used as a template for PCR with primers designed for *Dlx2* gene (GAGAAATGCCGACAGAT-CAGCTC and CCACCATAGGCTGATGTTGTATG) and the CmURE2 enhancer (AAAGCTCCAGAATTCT-TATTCA and GTCTGCTGGTTTATGGTAAAG) and the *Metap1* gene (exons 9/10: GCTCGAACTGGGCT-GATCTA and TGGACAGCAATTTCCAATGA: exon 7: AATGGACTGCAAGTTTGCCC and GCAGCCCT-TATCCAGTAGAA) that were hypothesized to be in a region of conserved synteny with the URE2 sequence in other vertebrate genomes (Figure 1).

Orthologous URE2 sequences were retrieved from the Ensembl genome browser (release 56) by blast with the zebrafish URE2 sequence (DrURE2) against the genome of seven other species: mouse, *Mus musculus*; chicken, *Gallus gallus*; anole lizard, *Anolis carolinensis*; xenopus, *Xenopus tropicalis*; medaka, *Oryzias latipes*; fugu *Takifugu rubripes*; Tetraodon *Tetraodon nigroviridis*. The sequences were first aligned with ClustalW implemented in BioEdit and the alignment was then refined by eye (total 1097 nucleotidic sites, see Suppl. Figure 1) [39]. In a zebrafish/mouse/elephant shark sequences comparison, we defined by eye the unambiguously aligned regions within the alignment of the three sequences (see Figure 2, final 578 bp). Percentages of identity were calculated and conserved regions were identified by BioEdit software (minimum segment length, 10 bp; gaps limited to 2 by segment and only 2 consecutive gaps allowed). In the comparisons of all nine species, only positions with gaps were excluded (final 705 bp) before the percentages of

identity were calculated between two sequences or before relative substitution rate tests were evaluated with the MEGA software [40].

Transgene constructs

For transgenic zebrafish, the URE2 element was inserted into the multiple cloning site of a vector that contained a β -globin minimal promoter-GFP cassette. The URE2 sequence is located immediately upstream of the β -globin-GFP fragment and the resulting URE2- β -globin-GFP DNA fragment is flanked at both ends by Tol2 recombinase recognition sequences [41]. For transgenic mice, the URE2 element was inserted into the multiple cloning site of the p1230 construct [42]. Microinjection of transgene constructs into fertilized mouse eggs and production of transgenic mice were carried out as previously described [16]. For the production of transgenic zebrafish, approximately 125 ng of a tol2 *transposase* mRNA synthesized *in vitro* with 50 ng/ml of DNA construct was co-injected along with the transgene constructs into fertilized zebrafish embryos at the one-cell stage. At least two independent lines of transgenic zebrafish were produced, unless otherwise indicated.

Animals

Zebrafish were raised at 28°C under a 14:10 hour light-dark cycle as previously described [43]. All animal manipulations were performed according to guidelines from the Canadian Council for Animal Care.

In situ hybridization

Zebrafish for RNA *in situ* hybridizations and fluorescence imaging were treated with 0.0015% 1-phenyl 2-thiourea (PTU) to inhibit melanogenesis. Whole mount *in situ* hybridizations were carried out following previously described protocol with digoxigenin-labelled cRNA probes synthesized on previously described templates *dlx2a* [29] and *gfp* [44]. Coloration was achieved with Nitro-Blue Tetrazolium Chloride (NBT) and 5-Bromo-4-Chloro-3-Indolylphosphate P-Toluidine Salt (BCIP) solution [45].

Microscopy and Immunohistochemistry

Whole mount images were taken on a Nikon NBZ 1500 dissecting microscope with a Nikon DXM 1200 C digital camera. Immunohistochemistry was carried out as previously described [17], on cryosections at a thickness of 10 μ m. Primary antibody: Rabbit anti-GFP (1:1000, Invitrogen, A-11122). Secondary antibodies: Goat anti-rabbit Alexa Fluor488 (1:300, Invitrogen, A11008). Signals were visualized on a Nikon Eclipse E3600 stereomicroscope for fluorescent stains.

Additional material

Additional file 1 Jawed vertebrate URE2 sequences alignment and similarity.

A. Alignment of URE2 sequences from tetrapods (Mm: *Mus musculus*; Gg: *Gallus gallus*; Ac: *Anolis carolinensis*; Xt: *Xenopus tropicalis*) and teleosts (Dr: *Danio rerio*; Ol: *Oryzias latipes*; Tn: *Tetraodon nigroviridis*; Tr: *Takifugu rubripes*) with elephant shark (Cm) URE2 sequence highlighted grey. B. Percentage of identity between two sequences after gap exclusion in the previous alignment

Additional file 2 Primary transgenic zebrafish embryos with *gfp* expressed under MmURE2 sequence.

GFP fluorescence could be detected in the forebrain (fb) of primary transgenic zebrafish at 2 dpf (A) and 3 dpf (B) after injection of the construct. GFP fluorescence was also detected in the visceral arches (va) of 4 dpf old embryos after injection (C).

Additional file 3 Primary transgenic mice with *LacZ* expressed under CmURE2 (A-E), DrURE2 (F-H) sequences to be compared with *LacZ* expression in a stable transgenic line under MmURE2 regulation (G), at E11.5. d: diencephalon, drg: dorsal root ganglia, md: mandibular arch, t: telencephalon.

Authors' contributions

RBM contributed to the production of constructs, transgenic mice and zebrafish lines/primary embryos, to the analysis of transgenic lines and to the writing of the manuscript; MDT contributed to sequence analyses, transgenic animal analyses and to the writing of the manuscript; KM contributed to the production of gene constructs and transgenic zebrafish lines; LP contributed to the production of constructs used in transgenesis and of the mouse transgenic line; BHT screened and identified the elephant BAC clone; BV provided access to elephant shark sequences and to BAC clones, contributed to the analyses of the data and to the writing of the manuscript; ME contributed to the design of the study, to the analyses of the data and to the writing of the manuscript. All authors have read and approved the final manuscript.

Acknowledgements

We thank Clément Gilbert for his help with sequence analysis and improvement of the manuscript. This work was supported by a Discovery Grant from the Natural Sciences and Engineering Research Council of Canada and by CIHR MOP-14460. Work in BV's lab was supported by the Agency for Science, Technology and Research, Singapore.

Author Details

¹Center for Advanced Research in Environmental Genomics, Department of Biology, University of Ottawa, Ottawa, ON, K1N 6N5, Canada, ²Institute of Molecular and Cell Biology, A*STAR, Biopolis, 138673, Singapore and ³Department of Zoology, Oxford University, Oxford, UK

Received: 15 January 2010 Accepted: 26 May 2010

Published: 26 May 2010

References

1. Prud'homme B, Gompel N, Carroll SB: **Emerging principles of regulatory evolution.** *Proc Natl Acad Sci USA* 2007, **104**(Suppl 1):8605-8612.
2. Siepel A, Bejerano G, Pedersen JS, Hinrichs AS, Hou M, Rosenbloom K, Clawson H, Spieth J, Hillier LW, Richards S, et al.: **Evolutionarily conserved elements in vertebrate, insect, worm, and yeast genomes.** *Genome Res* 2005, **15**(8):1034-1050.
3. Sandelin A, Bailey P, Bruce S, Engstrom PG, Klos JM, Wasserman WW, Ericson J, Lenhard B: **Arrays of ultraconserved non-coding regions span the loci of key developmental genes in vertebrate genomes.** *BMC Genomics* 2004, **5**(1):99.
4. Visel A, Prabhakar S, Akiyama JA, Shoukry M, Lewis KD, Holt A, Plajzer-Frick I, Afzal V, Rubin EM, Pennacchio LA: **Ultraconservation identifies a small subset of extremely constrained developmental enhancers.** *Nat Genet* 2008, **40**(2):158-160.
5. McEwen GK, Goode DK, Parker HJ, Woolfe A, Callaway H, Elgar G: **Early evolution of conserved regulatory sequences associated with development in vertebrates.** *PLoS Genet* 2009, **5**(12):e1000762.
6. Fisher S, Grice EA, Vinton RM, Bessling SL, McCallion AS: **Conservation of RET regulatory function from human to zebrafish without sequence similarity.** *Science* 2006, **312**(5771):276-279.

7. Weirauch MT, Hughes TR: Conserved expression without conserved regulatory sequence: the more things change, the more they stay the same. *Trends Genet* 2009, **26**(2):66-74.
8. Navratilova P, Fredman D, Hawkins TA, Turner K, Lenhard B, Becker TS: Systematic human/zebrafish comparative identification of cis-regulatory activity around vertebrate developmental transcription factor genes. *Dev Biol* 2009, **327**(2):526-540.
9. Navratilova P, Fredman D, Lenhard B, Becker TS: Regulatory divergence of the duplicated chromosomal loci *sox11a/b* by subpartitioning and sequence evolution of enhancers in zebrafish. *Mol Genet Genomics* 2009, **283**(2):171-184.
10. Blader P, Lam CS, Rastegar S, Scardigli R, Nicod JC, Simplicio N, Plessy C, Fischer N, Schuurmans C, Guillemot F, *et al.*: Conserved and acquired features of neurogenin1 regulation. *Development* 2004, **131**(22):5627-5637.
11. VISTA enhancer browser [<http://enhancer.lbl.gov/>]
12. Panganiban G, Rubenstein JL: Developmental functions of the Distal-less/Dlx homeobox genes. *Development* 2002, **129**(19):4371-4386.
13. Ellies DL, Langille RM, Martin CC, Akimenko MA, Ekker M: Specific craniofacial cartilage dysmorphogenesis coincides with a loss of *dlx* gene expression in retinoic acid-treated zebrafish embryos. *Mech Dev* 1997, **61**(1-2):23-36.
14. Dehal P, Boore JL: Two rounds of whole genome duplication in the ancestral vertebrate. *PLoS Biol* 2005, **3**(10):e314.
15. Caracciolo A, Di Gregorio A, Aniello F, Di Lauro R, Branno M: Identification and developmental expression of three Distal-less homeobox containing genes in the ascidian *Ciona intestinalis*. *Mech Dev* 2000, **99**(1-2):173-176.
16. Zerucha T, Stuhmer T, Hatch G, Park BK, Long Q, Yu G, Gambarotta A, Schultz JR, Rubenstein JL, Ekker M: A highly conserved enhancer in the *Dlx5/Dlx6* intergenic region is the site of cross-regulatory interactions between *Dlx* genes in the embryonic forebrain. *J Neurosci* 2000, **20**(2):709-721.
17. Ghanem N, Jarinova O, Amores A, Long Q, Hatch G, Park BK, Rubenstein JL, Ekker M: Regulatory roles of conserved intergenic domains in vertebrate *Dlx* bigene clusters. *Genome Res* 2003, **13**(4):533-543.
18. Ghanem N, Yu M, Long J, Hatch G, Rubenstein JL, Ekker M: Distinct cis-regulatory elements from the *Dlx1/Dlx2* locus mark different progenitor cell populations in the ganglionic eminences and different subtypes of adult cortical interneurons. *J Neurosci* 2007, **27**(19):5012-5022.
19. Venkatesh B, Kirkness EF, Loh YH, Halpern AL, Lee AP, Johnson J, Dandona N, Viswanathan LD, Tay A, Venter JC, *et al.*: Survey sequencing and comparative analysis of the elephant shark (*Callorhynchus milii*) genome. *PLoS Biol* 2007, **5**(4):e101.
20. Venkatesh B, Kirkness EF, Loh YH, Halpern AL, Lee AP, Johnson J, Dandona N, Viswanathan LD, Tay A, Venter JC, *et al.*: Ancient noncoding elements conserved in the human genome. *Science* 2006, **314**(5807):1892.
21. Ravi V, Lam K, Tay BH, Tay A, Brenner S, Venkatesh B: Elephant shark (*Callorhynchus milii*) provides insights into the evolution of Hox gene clusters in gnathostomes. *Proc Natl Acad Sci USA* 2009, **106**(38):16327-16332.
22. Stock DW, Ellies DL, Zhao Z, Ekker M, Ruddle FH, Weiss KM: The evolution of the vertebrate *Dlx* gene family. *Proc Natl Acad Sci USA* 1996, **93**(20):10858-10863.
23. Amores A, Force A, Yan YL, Joly L, Amemiya C, Fritz A, Ho RK, Langeland J, Prince V, Wang YL, *et al.*: Zebrafish *hox* clusters and vertebrate genome evolution. *Science* 1998, **282**(5394):1711-1714.
24. Engstrom PG, Ho Sui SJ, Drivenes O, Becker TS, Lenhard B: Genomic regulatory blocks underlie extensive microsynteny conservation in insects. *Genome Res* 2007, **17**(12):1898-1908.
25. Engstrom PG, Fredman D, Lenhard B: Ancora: a web resource for exploring highly conserved noncoding elements and their association with developmental regulatory genes. *Genome Biol* 2008, **9**(2):R34.
26. Kikuta H, Laplante M, Navratilova P, Komisarczuk AZ, Engstrom PG, Fredman D, Akalin A, Caccamo M, Sealy I, Howe K, *et al.*: Genomic regulatory blocks encompass multiple neighboring genes and maintain conserved synteny in vertebrates. *Genome Res* 2007, **17**(5):545-555.
27. Potter GB, Petryniak MA, Shevchenko E, McKinsey GL, Ekker M, Rubenstein JL: Generation of Cre-transgenic mice using *Dlx1/Dlx2* enhancers and their characterization in GABAergic interneurons. *Mol Cell Neurosci* 2009, **40**(2):167-186.
28. SYNORTH [<http://synorth.genereg.net/>]
29. Akimenko MA, Ekker M, Wegner J, Lin W, Westerfield M: Combinatorial expression of three zebrafish genes related to distal-less: part of a homeobox gene code for the head. *J Neurosci* 1994, **14**(6):3475-3486.
30. Mueller T, Wullmann MF, Guo S: Early teleostean basal ganglia development visualized by zebrafish *Dlx2a*, *Lhx6*, *Lhx7*, *Tbr2* (*eomesa*), and *GAD67* gene expression. *J Comp Neurol* 2008, **507**(2):1245-1257.
31. Ensembl Genome Browser [<http://uswest.ensembl.org/>]
32. Stock DW: The *Dlx* gene complement of the leopard shark, *Triakis semifasciata*, resembles that of mammals: implications for genomic and morphological evolution of jawed vertebrates. *Genetics* 2005, **169**(2):807-817.
33. Neidert AH, Virupannavar V, Hooker GW, Langeland JA: Lamprey *Dlx* genes and early vertebrate evolution. *Proc Natl Acad Sci USA* 2001, **98**(4):1665-1670.
34. NCBI sequence browser [<http://blast.ncbi.nlm.nih.gov/Blast.cgi>]
35. UCSC genome browser [<http://genome.ucsc.edu/>]
36. Holland ND, Panganiban G, Henyey EL, Holland LZ: Sequence and developmental expression of *AmphiDlx*, an amphioxus Distal-less gene transcribed in the ectoderm, epidermis and nervous system: insights into evolution of craniate forebrain and neural crest. *Development* 1996, **122**(9):2911-2920.
37. Verreijdt L, Debais-Thibaud M, Borday-Birraux V, Heyden C Van der, Sire JY, Huysseune A: Expression of the *dlx* gene family during formation of the cranial bones in the zebrafish (*Danio rerio*): differential involvement in the visceral skeleton and braincase. *Dev Dyn* 2006, **235**(5):1371-1389.
38. Elephant shark Genome Project [<http://esharkgenome.imcba-star.edu.sg/>]
39. Thompson JD, Higgins DG, Gibson TJ: CLUSTAL W: improving the sensitivity of progressive multiple sequence alignment through sequence weighting, position-specific gap penalties and weight matrix choice. *Nucleic Acids Res* 1994, **22**(22):4673-4680.
40. Kumar S, Tamura K, Nei M: MEGA: Molecular Evolutionary Genetics Analysis software for microcomputers. *Comput Appl Biosci* 1994, **10**(2):189-191.
41. Fisher S, Grice EA, Vinton RM, Bessling SL, Urasaki A, Kawakami K, McCallion AS: Evaluating the biological relevance of putative enhancers using Tol2 transposon-mediated transgenesis in zebrafish. *Nat Protoc* 2006, **1**(3):1297-1305.
42. Yee SP, Rigby PW: The regulation of myogenin gene expression during the embryonic development of the mouse. *Genes Dev* 1993, **7**(7A):1277-1289.
43. Westerfield M: *The Zebrafish Book*. Eugene: University of Oregon Press; 1995.
44. Dorsky RI, Sheldahl LC, Moon RT: A transgenic *Lef1/beta-catenin*-dependent reporter is expressed in spatially restricted domains throughout zebrafish development. *Dev Biol* 2002, **241**(2):229-237.
45. Thisse C, Thisse B, Schilling TF, Postlethwait JH: Structure of the zebrafish *snail1* gene and its expression in wild-type, spadetail and no tail mutant embryos. *Development* 1993, **119**(4):1203-1215.

doi: 10.1186/1471-2148-10-157

Cite this article as: MacDonald *et al.*, Functional conservation of a forebrain enhancer from the elephant shark (*Callorhynchus milii*) in zebrafish and mice *BMC Evolutionary Biology* 2010, **10**:157