

Research article

Open Access

## Studies on the actin-binding protein HSI in platelets

Steven G Thomas\*<sup>1,2</sup>, Simon DJ Calaminus<sup>2</sup>, Jocelyn M Auger<sup>2</sup>,  
Stephen P Watson<sup>2</sup> and Laura M Machesky<sup>1</sup>

Address: <sup>1</sup>School of Biosciences, University of Birmingham, Edgbaston, Birmingham, B15 2TT, UK and <sup>2</sup>Centre for Cardiovascular Sciences, Institute of Biomedical Research, The Medical School, University of Birmingham, Edgbaston, Birmingham, UK

Email: Steven G Thomas\* - [s.thomas@bham.ac.uk](mailto:s.thomas@bham.ac.uk); Simon DJ Calaminus - [SDC379@bham.ac.uk](mailto:SDC379@bham.ac.uk); Jocelyn M Auger - [J.M.Auger@bham.ac.uk](mailto:J.M.Auger@bham.ac.uk); Stephen P Watson - [S.P.Watson@bham.ac.uk](mailto:S.P.Watson@bham.ac.uk); Laura M Machesky - [L.M.Machesky@bham.ac.uk](mailto:L.M.Machesky@bham.ac.uk)

\* Corresponding author

Published: 9 November 2007

Received: 18 June 2007

*BMC Cell Biology* 2007, **8**:46 doi:10.1186/1471-2121-8-46

Accepted: 9 November 2007

This article is available from: <http://www.biomedcentral.com/1471-2121/8/46>

© 2007 Thomas et al; licensee BioMed Central Ltd.

This is an Open Access article distributed under the terms of the Creative Commons Attribution License (<http://creativecommons.org/licenses/by/2.0>), which permits unrestricted use, distribution, and reproduction in any medium, provided the original work is properly cited.

### Abstract

**Background:** The platelet cytoskeleton mediates the dramatic change in platelet morphology that takes place upon activation and stabilizes thrombus formation. The Arp2/3 complex plays a vital role in these processes, providing the protrusive force for lamellipodia formation. The Arp2/3 complex is highly regulated by a number of actin-binding proteins including the haematopoietic-specific protein HSI and its homologue cortactin. The present study investigates the role of HSI in platelets using HSI<sup>-/-</sup> mice.

**Results:** The present results demonstrate that HSI is not required for platelet activation, shape change or aggregation. Platelets from HSI<sup>-/-</sup> mice spread normally on a variety of adhesion proteins and have normal F-actin and Arp2/3 complex distributions. Clot retraction, an actin-dependent process, is also normal in these mice. Platelet aggregation and secretion is indistinguishable between knock out and littermates and there is no increase in bleeding using the tail bleeding assay.

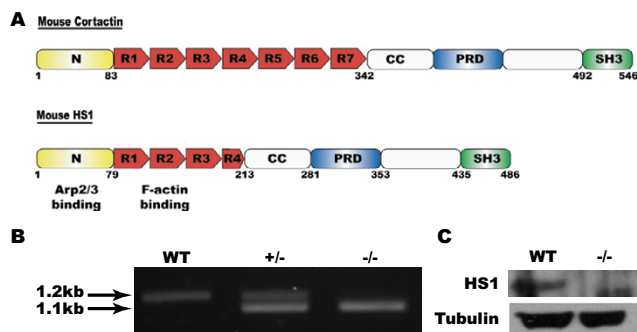
**Conclusion:** This study concludes that HSI does not play a major role in platelet function. It is possible that a role for HSI is masked by the presence of cortactin.

### Background

The platelet is highly dependent upon its actin cytoskeleton for proper functioning. Dramatic re-arrangements of the actin cytoskeleton mediates spreading on matrix proteins and is required for normal thrombus formation [1,2]. At rest, the discoid shape of a platelet is maintained by a microtubule coil, a spectrin-based skeleton immediately below the plasma membrane, and a network of 2000 – 5000 actin filaments held rigid by the cross-linking proteins filamin and  $\alpha$ -actinin [3-5]. Following Ca<sup>2+</sup> elevation, the actin-severing protein gelsolin is released from barbed ends leading to relaxing of the discoid shape and a large increase in the number of free barbed ends for

polymerisation [6]. Concomitant activation of the Arp2/3 complex, a seven-membered protein complex which nucleates actin filaments, leads to a massive increase in the F-actin content of platelets. This provides the protrusive force for filopodia and lamellipodia formation that gives the platelet its characteristic spread morphology [7].

The Arp2/3 complex is regulated by a number of proteins which allow for tight spatial and temporal regulation of its activity, including haematopoietic lineage cell-specific protein 1 (HS1) and its homologue cortactin (for reviews see [8,9]) (Figure 1A). HS1 is expressed in cells of a haematopoietic lineage, whereas cortactin is ubiquitously



**Figure 1**  
**Domain organisation of HSI<sup>-/-</sup> and genotyping of knockout mice.** (A) Schematic representation of mouse cortactin and HSI proteins. N – terminal acidic domain, R1, R2, etc – Cortactin repeats, CC – coiled coil helical domain, PRD – proline rich domain, SH3 – C-terminal Src homology domain. Numbers indicate amino acid number. (B) Genotyping of HSI knockout mice by PCR. WT – wild type, HSI<sup>+/-</sup> – heterozygote, HSI<sup>-/-</sup> – homozygote. (C) Western blot of platelet extracts from WT and HSI<sup>-/-</sup> mice probed with  $\alpha$ -HSI (top panel) and  $\alpha$ -tubulin (bottom panel).

expressed. Both proteins are regulated by tyrosine phosphorylation and have Arp2/3-binding, F-actin binding repeat, coiled coil, proline rich and C-terminal SH3 domains. However, cortactin has 6.5 F-actin binding repeats [8], whereas HSI only has 3.5 and this changes the way in which the protein interacts with Arp2/3-induced F-actin arrays [10]. Similarly, the tyrosine residues which are phosphorylated are not conserved between the two proteins indicating that there are differences in their regulation [11,12].

HS1 is tyrosine phosphorylated downstream of T- and B-cell receptor activation [13] and following thrombin-stimulation of platelets [14]. Subsequent to phosphorylation in platelets, HSI translocates to the plasma membrane [14] where it is postulated to be involved in the morphological changes observed during apoptosis [14,15]. In B- and T-cells, tyrosine phosphorylation is involved in the migration of HSI to lipid rafts where it is proposed to mediate actin assembly [16]. HSI<sup>-/-</sup> mice have normal lymphocyte development but are deficient in the proliferative response induced by immunoreceptor engagement. Gomez et al [17] have shown that in HSI<sup>-/-</sup> T-cells the immune synapse, an F-actin and Arp2/3 containing structure [18], begins to form but is disorganised and does not persist. These studies indicate that HSI may play a role in both signalling to actin assembly following signal perception and in maintenance of dendritic actin arrays downstream of Arp2/3 activation. In this study we utilised an HSI gene knockout mouse (HSI<sup>-/-</sup>) to ask whether HSI contributes to signalling by the platelet col-

lagen receptor, GPVI, which signals through the same pathway as that used by immunoreceptors and also by other classes of platelet surface receptors.

## Results and discussion

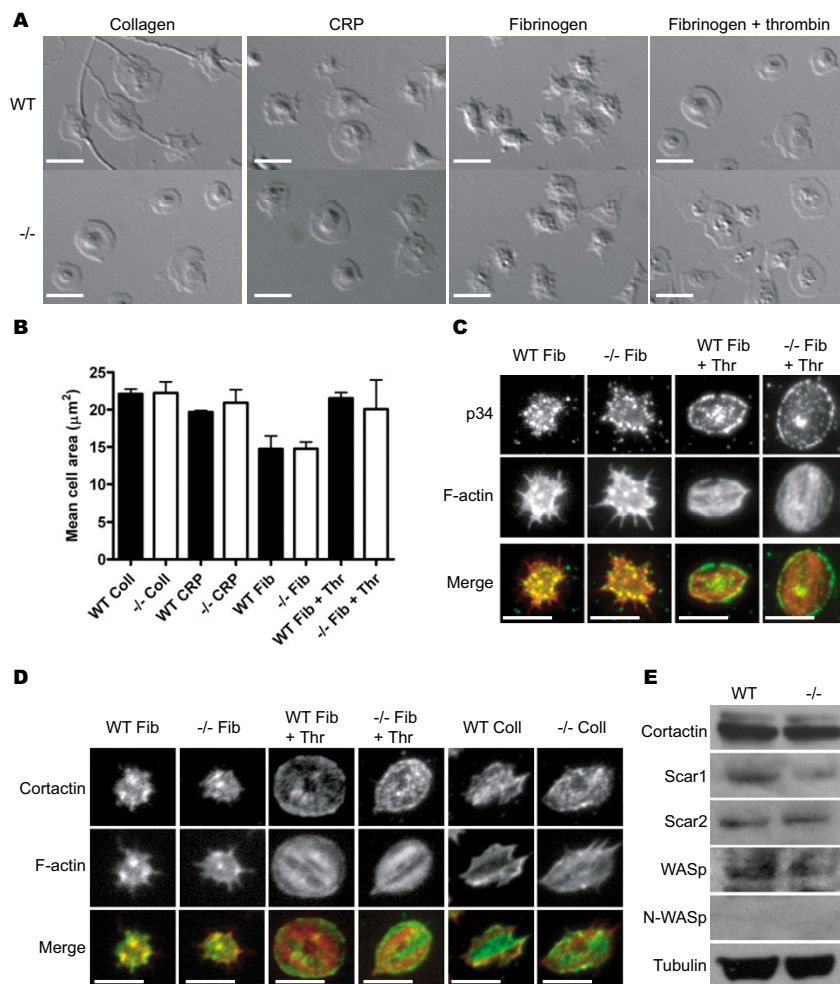
### Genotyping

Wild type mice were identified by the production of a 1.2 kb PCR fragment using primers HS1-3'KO-S and HS1-KO-end-3' (Figure 1B). HSI<sup>-/-</sup> genotypes were detected by amplification of a 1.1 kb fragment resulting from insertion of the Lac-Z cassette into the gene [13] using primers HS1-3'KO-S and Lac-Z-3' (Figure 1B). Confirmation that HSI protein was not expressed in these mice was obtained by western blotting using a rabbit polyclonal antibody raised against HSI [17] (Figure 1C).

### Platelet spreading and actin organization

As an F-actin and Arp2/3 binding protein, HSI is predicted to play a role in the F-actin and Arp2/3 dependent processes of platelet shape change and spreading. To test this, the surface area of spread platelets was measured at 45 min after addition to immobilized agonists. Spreading of HSI<sup>-/-</sup> platelets on CRP, collagen, fibrinogen or a combination of fibrinogen and thrombin was indistinguishable to that of wild type (WT) platelets both in terms of morphology and surface area (Figure 2A and 2B). Spreading on fibrinogen alone was dominated by the presence of filopodia, whereas under all other conditions it was dominated by the presence of lamellipodia (Figure 2A & 2C). In T-cells, it has been shown that the early signaling events downstream of the T-cell receptor that lead to formation of the immune synapse are intact in HSI<sup>-/-</sup> mice, but that there is defective signaling to actin assembly and in maintenance of T-cell receptor signaling [17]. With this in mind, we monitored spreading at a later time point of 90 min, but again saw no change in platelet morphology on all surfaces relative to controls (not shown). In the case of platelets that had spread on fibrinogen alone, lamellipodia had begun to fill in the gaps between the filopodia and this accounts for the small increase in surface area relative to the 45 min time point; however, this was the same for both WT and HSI<sup>-/-</sup> (data not presented). We have also observed platelet spreading in real time and again saw no difference between HSI<sup>-/-</sup> and WT in the dynamics of spreading (not shown).

To further analyse spreading, HSI<sup>-/-</sup> platelets were immunostained for the Arp2/3 complex and F-actin. HSI<sup>-/-</sup> platelets displayed normal actin organization following spreading on fibrinogen, namely bright foci of F-actin and filopodia, that was indistinguishable from wild type platelets (Figure 2C). The Arp2/3 complex in these platelets, as identified using an antibody to the 34 kDa subunit, was localized primarily to the actin foci and to the cytoplasm. When platelets were spread on fibrinogen in the presence



**Figure 2**

**Analysis of platelet spreading and F-actin organization.** Washed platelets ( $2 \times 10^7$  platelets/ml) from WT and HSI<sup>-/-</sup> mice were added to cover slips coated with collagen (100  $\mu\text{g/ml}$ ), CRP (10  $\mu\text{g/ml}$ ) or fibrinogen (100  $\mu\text{g/ml}$ )  $\pm$  thrombin (1 U/ml) and allowed to settle for 45 or 90 min at 37°C. Spread platelets were fixed in formalin and imaged using DIC. Representative images of platelets at 45 min are shown in (A). Mean platelet area was measured. No significant difference was observed between WT and HSI<sup>-/-</sup> platelets on any surface at 45 min (B). Platelets spread on fibrinogen  $\pm$  thrombin for 45 min (C) were labeled with  $\alpha$ -p34 for Arp2/3 complex (top panel), and rhodamine phalloidin for F-actin (middle panel). The merged images are shown in the bottom panel. (D) Spread platelets were also labeled with  $\alpha$ -cortactin (top panel) and rhodamine phalloidin (middle panel). Merged images are shown in the bottom panel. Protein extracts from WT and HSI<sup>-/-</sup> mice were blotted (E) for cortactin, WASp, Scar/WAVE1, Scar/WAVE 2 and N-WASp. Blots were also probed for tubulin to check loading. Scale bars = 5  $\mu\text{M}$ .

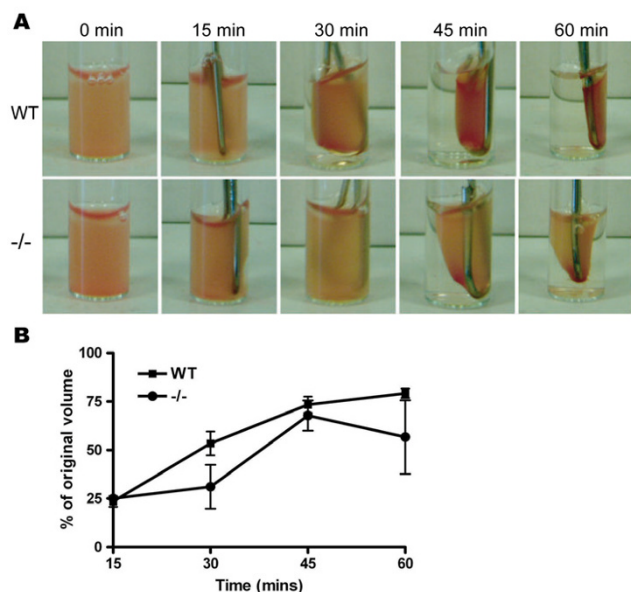
of thrombin, cells from both genotypes contained actin-rich stress fibers and the Arp2/3 complex was localized predominantly to the peripheral edge of the lamella (Figure 2C) although some foci of Arp2/3 were also observed in the cytoplasm. Again, no difference was observed between the WT and HSI<sup>-/-</sup> platelets. Spread platelets were also immunostained for cortactin (Figure 2D) to establish whether a lack of HS1 altered the distribution of cortactin. No differences were apparent between the two samples when spread on fibrinogen  $\pm$  thrombin or collagen indi-

cating that cortactin distribution is normal in these cells. Together these data indicate that, in platelets, the reorganization of F-actin and Arp2/3 complex which underpins cell spreading does not require the activity of HS1.

It is feasible that other activators of the Arp2/3 complex are able to compensate for the loss of HS1 in platelets. We probed western blots of platelet protein extracts for cortactin, WASp, Scar/WAVE1 and Scar/WAVE2 to determine if there was any up-regulation of these proteins. The

expression of cortactin, Scar/WAVE2 and WASp was the same in both WT and HS1<sup>-/-</sup> platelets indicating that there was no compensatory up-regulation of these proteins (Figure 2E). We did observe a small reduction in the level of Scar/WAVE1 in HS1<sup>-/-</sup> platelets compared to WT. However, we do not feel that this would be likely to have any significant effect as previous studies have shown that platelets from Scar/WAVE1 null mice have a relatively mild phenotype specifically downstream of GPVI signaling [19] and in the current study, no difference in the response of WT and HS1<sup>-/-</sup> platelets to CRP was observed. We have also demonstrated that there is no platelet defect in the Scar/WAVE1 heterozygote (unpublished data). Western blots were also probed for N-WASp. No band was observed on these blots indicating that N-WASp, if present in platelets, is expressed at low levels (below the detection limit of this antibody on western blot) and that a lack of a HS1<sup>-/-</sup> phenotype is not due to an increase in N-WASp expression.

The processes of clot retraction and thrombus stability which follow initial thrombus formation are known to be dependent on actin and myosin [2,20]. Accordingly we tested whether clot retraction was impaired in the absence of HS1 using platelet rich plasma from wild type and mutant mice. Images of representative clots taken at 15 min time intervals are shown in Figure 3A. The % of



**Figure 3**  
**Clot retraction assays in WT and HS1<sup>-/-</sup> PRP.** (A) Time course of clot contraction and (B) the volume of serum excluded at each time point. No significant difference was observed between WT and HS1<sup>-/-</sup> platelet rich plasma at any time point (n = 3).

serum remaining in the tube after the clot was removed was measured for each time point. Whilst there appears to be a slight delay in clot retraction at 30 min, over the three replicates performed we observed no significant difference between the genotypes at any of the time points taken (Figure 3B). Nevertheless, clots formed in PRP from HS1<sup>-/-</sup> mice were still able to retract to a similar level to that observed in WT PRP.

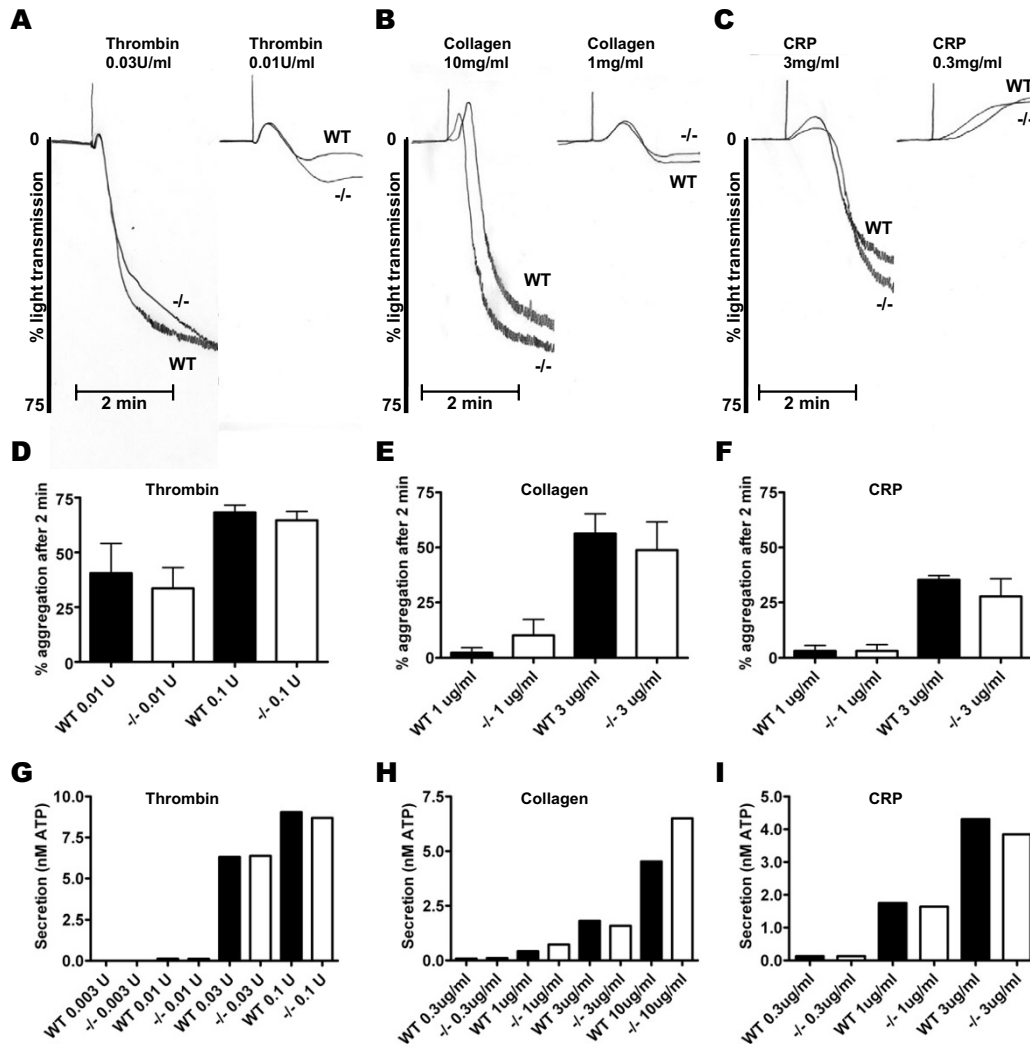
#### Platelet aggregation and secretion

The number of platelets was measured following removal of whole blood from terminally-narcosed mice. WT mice had a mean platelet number of  $496 \pm 36 \times 10^3/\text{mm}^3$  whilst HS1<sup>-/-</sup> mice had a mean of  $423 \pm 36 \times 10^3/\text{mm}^3$ . There was no significant difference ( $P = 0.124$ ) between these two numbers demonstrating that HS1<sup>-/-</sup> is not essential for platelet formation.

In view of the fact that the actin assembly contributes to activation of PLC $\gamma$  2 downstream of the major platelet signaling receptor for collagen, the immunoglobulin GPVI [21], we investigated platelet aggregation and secretion responses to collagen and the GPVI-specific agonist CRP alongside responses to thrombin using WT and HS1<sup>-/-</sup> platelets. Representative traces for aggregation to maximal and threshold concentrations of each of the three agonists are shown in Figure 4A, B, and 4C. Essentially, no significant difference in the pattern or extent of aggregation was observed between the two genotypes for all three agonists (Figure 4D, E & 4F). Secretion of ATP from these platelets was monitored simultaneously with aggregation using luciferin luminescence. Again, no difference was observed in ATP secretion between WT and HS1<sup>-/-</sup> platelets in response to the three agonists (Figure 4G, H & 4I). This data, in conjunction with the spreading data presented above, indicates that abrogation of HS1 does not impair the ability of platelets to respond to stimuli and to successfully transduce the signals required for shape change, aggregation and secretion.

#### Role of HS1 in thrombus formation in vivo and in vitro

We extended our studies to flow-based test systems to further investigate possible differences between WT and HS1<sup>-/-</sup> platelets. The ability of platelets to adhere and form aggregates under high shear rates ( $1000\text{s}^{-1}$ ) was tested using *in vitro* flow experiments. No difference was observed between WT and HS1<sup>-/-</sup> blood in the visual appearance of the aggregates formed during these experiments (Figure 5A & 5B). Analysis of surface area coverage of platelets in 10 random field of view quantified using fluorescently labeled platelets (Figure 5C & 5D) confirmed that there was no significant difference between the genotypes ( $P = 0.669$ , ns).

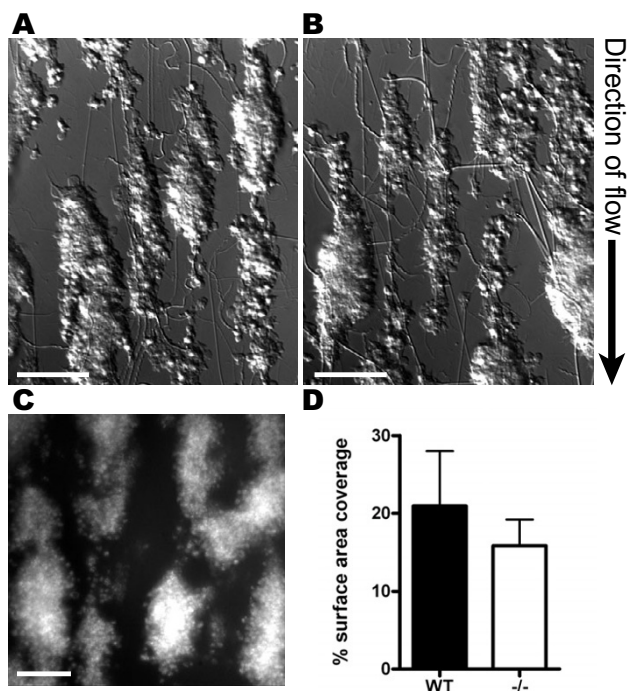


**Figure 4**

**Aggregation and secretion response of WT and HSI<sup>-/-</sup> platelets.** (A) – (C) Representative aggregation traces for WT and HSI<sup>-/-</sup> platelets in response to maximal and threshold concentrations of thrombin, collagen and CRP. (D – I) Percentage aggregation and ATP secretion of WT and HSI<sup>-/-</sup> platelets was determined after 2 min stimulation with varying concentrations of thrombin (D & G), collagen (E & H) and CRP (F & I). For % aggregation the mean ± SEM of 3 different mice is presented. For ATP secretion, mean ± SEM from 1 representative experiment is shown (WT – Black bars, HSI<sup>-/-</sup> – White bars). No significant difference was observed between WT and HSI<sup>-/-</sup> platelets for any of the agonists tested.

We also tested the bleeding time using a tail bleeding assays on HSI<sup>-/-</sup> (n = 10) and WT (n = 12) mice. For these studies, the tail was laid flat and the volume of blood that dripped from the tail following removal of a 3 mm portion was recorded. The data collected was expressed as volume of blood lost in 10 min (Figure 6). No significant difference was observed between the two genotypes in the volume of blood lost in 10 min (P = 0.852, ns) demonstrating that absence of HS1 does not result in a bleeding disorder.

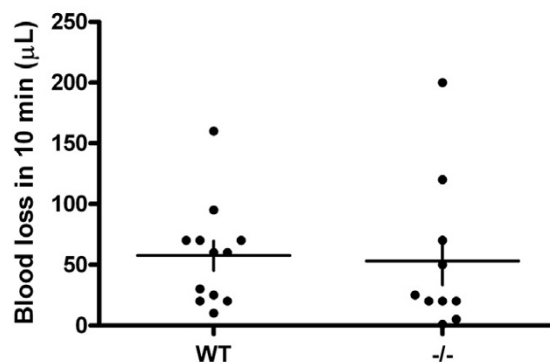
After this work was submitted, Kahner *et al* [22], published a paper which described tyrosine phosphorylation of HS1 in human platelets downstream of GPVI. This manuscript also described a mild bleeding phenotype for the HSI<sup>-/-</sup> mice using tail bleed and FeCl<sub>3</sub> *in vivo* injury models. Further, this study also reported a small increase in the time taken for platelets to change shape in response to convulxin and PAR-4 agonists although aggregation appeared normal. They also observed reduced dense granule secretion in null mice. It is feasible that these relatively small differences could be due to HS1's role in actin dynamics, although the authors do not discuss their



**Figure 5**  
**In vitro flow assays.** Whole blood from WT (A) or HSI<sup>-/-</sup> (B) mice was flowed over collagen at a shear rate of 1000 s<sup>-1</sup> for 4 min. Aggregates were fixed in formalin and imaged using DIC. Flow experiments were also carried out with DiOC<sub>6</sub> labeled platelets (representative image shown in C) and the mean surface area of aggregates was calculated from fluorescence images (D). Means ± SEM are plotted (n = 3). No significant difference was observed between surface area coverage of WT and HSI<sup>-/-</sup> platelets (P = 0.669). Scale bars = 20 μM

results in relation to the actin cytoskeleton and indeed do not propose a mechanism for this defect. There is no clear explanation for the differences observed in the present study, although it should be emphasized that the relatively mild nature of the phenotype described by Kahner *et al* [22] emphasizes that the role of HS1, if any, is relatively mild. It is possible that differences between the two studies could be related to subtle differences in the genetic composition of the mice due to in-breeding (and therefore the presence of modifier genes), although it should be noted that both studies were performed on C57BL/6 background and the results were compared to those obtained on littermate controls.

The absence of a phenotype for HSI<sup>-/-</sup> platelets is surprising in light of the work by Kahner *et al* [22], bearing in mind that it has a relatively limited tissue expression profile [23] and that it undergoes tyrosine phosphorylation in activated platelets [14]. It is possible that cortactin and



**Figure 6**  
**Bleeding time measurements in WT and HSI<sup>-/-</sup> mice.** HSI<sup>-/-</sup> mice show no significant difference in bleeding as determined by volume of blood lost in 10 min following removal of the terminal 3 mm of the tail (P = 0.852). Closed circles represent individual data points, horizontal bars the mean and vertical bars the SEM. (n = 12 for WT and 10 for HSI<sup>-/-</sup>).

HS1 could be functionally redundant as they share a very similar domain structure and that cortactin is highly expressed in megakaryocytes and platelets [24]. In contrast, B and T-cells, which show a distinct phenotype in the absence of HS1, express a low level of cortactin. It is therefore important to extend this work to platelets deficient in cortactin and in both cortactin and HS1.

## Methods

### Mice

HS1<sup>-/-</sup> mice were a kind gift from Drs Takeshi Watanabe and Diasuke Kitamura (Kumamoto University, Japan). Mice were back-crossed into the C57BL/6 background and bred as heterozygotes. All experiments were performed on mice aged 6 – 10 weeks of age using litter-matched controls (designated WT). Observation of the mice revealed no obvious defects in development and HSI<sup>-/-</sup> mice were visually undistinguishable from WT or heterozygote mice. Genotyping of mice was carried out by PCR on genomic DNA extracted from ear clippings taken at 3 weeks after birth. Primers HS1-3'KO-S (5'-GAGAGGAAAGGTA-GACACCAG-3') and HS1-KO-end-3' (5'-GGCATGGAT-GGCTGCTGGAC-3') were used to identify wild type mice. HSI<sup>-/-</sup> mice were identified using primers HS1-3'KO-S and reverse primer Lac-Z-3' (5'-CATGCTTGAACAAC-GAGCGC-3'). All animals were maintained using housing and husbandry in accordance with local and national legal regulations.

**Preparation of murine platelets**

Blood was drawn from CO<sub>2</sub> terminally-narcosed mice under anesthetic from the hepatic portal vein and taken into ACD at a ratio of 1:10 or, for aggregation studies performed in platelet rich plasma (PRP), into sodium citrate. Platelet numbers in whole blood were determined using an ABX Micros 60 (ABX Diagnostics, Montpellier, France). PRP and washed platelets were prepared as previously described [19].

**DIC and fluorescence microscopy of spread platelets**

Cover slips were incubated with a suspension of fibrinogen (100 µg mL<sup>-1</sup>), collagen (100 µg mL<sup>-1</sup>) or collagen related peptide (CRP, 100 µg mL<sup>-1</sup>) overnight at 4 °C. Surfaces were washed and then blocked with denatured BSA (5 mg mL<sup>-1</sup>) for 1 h at room temperature followed by subsequent washing with PBS before use in spreading assays. Platelets (2 × 10<sup>7</sup> mL<sup>-1</sup>) were layered on immobilized proteins and allowed to adhere for 45 or 90 min at 37 °C. Surfaces were then washed with PBS to remove non-adherent cells before fixation with 10% formalin, neutral buffered, for 10 min at room temperature. Platelet morphology was imaged as previously described [19]. The platelet surface area of spread platelets was computed using a java plugin for the Image J software package as previously described [25].

Immunolocalization of F-actin, Arp2/3 complex and cortactin was carried out as follows. Fixed platelets were made permeable in 0.1% Triton X-100 in PBS for 5 min, washed 3× in PBS and then incubated in α-p34 or α-cortactin for 60 min at room temperature (1 in 500 dilution in PBS). Coverslips were washed 3× in PBS and then incubated for 30 min with goat α-rabbit-488 or goat α-mouse-fit and rhodamine phalloidin (1 in 500 and 1 in 1000, respectively). Samples were washed and mounted in Mowiol and imaged using a Zeiss 63× oil immersion Plan-Apochromat lens on a Zeiss Axioskop2 microscope. Digital images were captured by a Qicam Fast digital camera (Qimaging corporation) using Openlab 4.0.3 software (Improvision).

**Clot retraction assays**

Whole murine blood was anti-coagulated with sodium citrate and PRP prepared as above. The platelet count was adjusted to 3 × 10<sup>8</sup>/ml with HEPES-Tyrodes containing CaCl<sub>2</sub> (2 mM) and fibrinogen (2 mg/ml). 400 µl of this mix was placed into an aggregometer tube and incubated at 37 °C for 5 min. 2 µl of mouse erythrocytes were added for colour contrast. Thrombin (10 U/ml) was added and mixed with a paper-clip and clot retraction was allowed to proceed at 37 °C for 1 hour with the paper-clip present. At appropriate time points photographic images of retracting clots were recorded and the clot was pulled out with the

paper-clip and the remaining serum volume measured. These experiments were performed blind.

**Platelet aggregation studies**

Platelet aggregation was monitored using 300 µL of 2 × 10<sup>8</sup> mL<sup>-1</sup> of either PRP (for CRP and collagen) or washed platelets (for thrombin). Stimulation of platelets was performed in a Chrono-Log aggregometer (Chrono-Log, Havertown, PA, USA) with continuous stirring at 1200 rpm at 37 °C as previously described [21].

**In Vitro Flow studies**

For *in vitro* flow studies, mouse blood was prepared and treated as described by Calaminus *et al.* [19]. Platelet adhesion results are expressed as the percentage of surface area covered by platelets.

**Tail bleed assays**

Experiments were conducted on 20–35 g male and female WT (n = 12), and HS1<sup>-/-</sup> (n = 10) mice. Mice were anaesthetized with isoflurane via a face mask throughout the experiment and subsequently injected with the analgesic buprenorphine (ip). The animal was laid flat on a box of height 15 cm and the tail was laid horizontally along the box with the tip (1 cm) protruding horizontally over the edge. The terminal 3 mm of tail was removed using a sharp razor blade and blood was collected in a graduated 3 ml blood tube containing 1.5 ml H<sub>2</sub>O. Mice were allowed to bleed until they lost either 15% blood volume (which was calculated prior to the experiment based on the animal weight and assuming a blood volume of 70 ml/kg) or for 20 min. Data were presented as the volume (µl) of blood lost in 10 min.

**Data Analysis**

Results are shown as mean ± SEM from at least 3 experiments unless otherwise stated. Statistical comparisons were made using Student's test or a non-parametric test.

**Authors' contributions**

SGT designed and carried out the experiments and wrote the manuscript. SDJC assisted with carrying out the experiments. JMA performed the tail bleed and *in vitro* flow experiments. SPW and LMM conceived the study, assisted in designing the experiments and in writing the manuscript. All authors read and approved the final manuscript.

**Acknowledgements**

This work was supported by the BHF and Wellcome Trust. SGT is funded on a BHF project grant to LMM (PG/04/108/17760). SDJC is funded through a BHF Studentship. JMA is funded by the Wellcome Trust. SPW holds a BHF Chair. LMM holds a MRC Senior Research Fellowship (G117/569). The authors would like to acknowledge Diasuke Kitamura for the HS1<sup>-/-</sup> mice and Dan Billadeau for the kind gift of the HS1 antibody.

## References

1. Fox JE, Phillips DR: **Inhibition of actin polymerization in blood platelets by cytochalasins.** *Nature* 1981, **292(5824)**:650-652.
2. Shattil SJ, Kashiwagi H, Pampori N: **Integrin Signaling: The Platelet Paradigm.** *Blood* 1998, **91(8)**:2645-2657.
3. Fox JE, Boyles JK, Berndt MC, Steffen PK, Anderson LK: **Identification of a membrane skeleton in platelets.** *J Cell Biol* 1988, **106(5)**:1525-1538.
4. Boyles J, Fox JE, Phillips DR, Stenberg PE: **Organization of the cytoskeleton in resting, discoid platelets: preservation of actin filaments by a modified fixation that prevents osmium damage.** *J Cell Biol* 1985, **101(4)**:1463-1472.
5. Hartwig JH, DeSisto M: **The cytoskeleton of the resting human blood platelet: structure of the membrane skeleton and its attachment to actin filaments.** *J Cell Biol* 1991, **112(3)**:407-425.
6. Lind SE, Janmey PA, Chaponnier C, Herbert TJ, Stossel TP: **Reversible binding of actin to gelsolin and profilin in human platelet extracts.** *J Cell Biol* 1987, **105(2)**:833-842.
7. Li Z, Kim ES, Bearer EL: **Arp2/3 complex is required for actin polymerization during platelet shape change.** *Blood* 2002, **99(12)**:4466-4474.
8. Daly RJ: **Cortactin signalling and dynamic actin networks.** *Biochem J* 2004, **382(Pt 1)**:13-25.
9. Huang Y, Burkhardt JK: **T-cell-receptor-dependent actin regulatory mechanisms.** *J Cell Sci* 2007, **120(5)**:723-730.
10. Hao JJ, Zhu J, Zhou K, Smith N, Zhan X: **The coiled-coil domain is required for HSI to bind to F-actin and activate Arp2/3 complex.** *J Biol Chem* 2005, **280(45)**:37988-37994.
11. Brunati AM, Donella-Deana A, James P, Quadroni M, Contri A, Marin O, Pinna LA: **Molecular features underlying the sequential phosphorylation of HSI protein and its association with c-Fgr protein-tyrosine kinase.** *J Biol Chem* 1999, **274(11)**:7557-7564.
12. Huang C, Liu J, Haudenschild CC, Zhan X: **The Role of Tyrosine Phosphorylation of Cortactin in the Locomotion of Endothelial Cells.** *J Biol Chem* 1998, **273(40)**:25770-25776.
13. Taniuchi I, Kitamura D, Maekawa Y, Fukuda T, Kishi H, Watanabe T: **Antigen-receptor induced clonal expansion and deletion of lymphocytes are impaired in mice lacking HSI protein, a substrate of the antigen-receptor-coupled tyrosine kinases.** *Embo J* 1995, **14(15)**:3664-3678.
14. Brunati AM, Deana R, Folda A, Massimino ML, Marin O, Ledro S, Pinna LA, Donella-Deana A: **Thrombin-induced tyrosine phosphorylation of HSI in human platelets is sequentially catalyzed by Syk and Lyn tyrosine kinases and associated with the cellular migration of the protein.** *J Biol Chem* 2005, **280(22)**:21029-21035.
15. Chen YR, Kori R, John B, Tan TH: **Caspase-mediated cleavage of actin-binding and SH3-domain-containing proteins cortactin, HSI, and HIP-55 during apoptosis.** *Biochem Biophys Res Commun* 2001, **288(4)**:981-989.
16. Hao JJ, Carey GB, Zhan X: **Syk-mediated tyrosine phosphorylation is required for the association of hematopoietic lineage cell-specific protein I with lipid rafts and B cell antigen receptor signalosome complex.** *J Biol Chem* 2004, **279(32)**:33413-33420.
17. Gomez TS, McCarney SD, Carrizosa E, Labno CM, Comiskey EO, Nolz JC, Zhu P, Freedman BD, Clark MR, Rawlings DJ, Billadeau DD, Burkhardt JK: **HSI Functions as an Essential Actin-Regulatory Adaptor Protein at the Immune Synapse.** *Immunity* 2006, **24(6)**:741.
18. Billadeau DD, Burkhardt JK: **Regulation of cytoskeletal dynamics at the immune synapse: new stars join the actin troupe.** *Traffic* 2006, **7(11)**:1451-1460.
19. Calaminus SD, McCarty OJ, Auger JM, Pearce AC, Insall RH, Watson SP, Machesky LM: **A major role for Scar/WAVE-1 downstream of GPVI in platelets.** *J Thromb Haemost* 2007, **5(3)**:535-541.
20. Suzuki-Inoue K, Hughes CE, Inoue O, Kaneko M, Cuyun-Lira O, Takafuta T, Watson SP, Ozaki Y: **Involvement of Src kinases and PLCg2 in clot retraction.** *Thromb Res* 2007, **120(2)**:251.
21. McCarty OJT, Larson MK, Auger JM, Kalia N, Atkinson BT, Pearce AC, Ruf S, Henderson RB, Tybulewicz VLJ, Machesky LM, Watson SP: **Rac1 Is Essential for Platelet Lamellipodia Formation and Aggregate Stability under Flow.** *J Biol Chem* 2005, **280(47)**:39474-39484.
22. Kahner BN, Dorsam RT, Mada SR, Kim S, Stalker TJ, Brass LF, Daniel JL, Kitamura D, Kunapuli SP: **Hematopoietic lineage cell specific protein I (HSI) is a functionally important signaling molecule in platelet activation.** *Blood* 2007, **110(7)**:2449-2456.
23. Kitamura D, Kaneko H, Miyagoe Y, Ariyasu T, Watanabe T: **Isolation and characterization of a novel human gene expressed specifically in the cells of hematopoietic lineage.** *Nucleic Acids Res* 1989, **17(22)**:9367-9379.
24. Miglarese MR, Mannion-Henderson J, Wu H, Parsons JT, Bender TP: **The protein tyrosine kinase substrate cortactin is differentially expressed in murine B lymphoid tumors.** *Oncogene* 1994, **9(7)**:1989-1997.
25. McCarty OJT, Zhao Y, Andrew N, Machesky LM, Staunton D, Frampton J, Watson SP: **Evaluation of the role of platelet integrins in fibronectin-dependent spreading and adhesion.** *J Thromb Haemost* 2004, **2(10)**:1823-1833.

Publish with **BioMed Central** and every scientist can read your work free of charge

"BioMed Central will be the most significant development for disseminating the results of biomedical research in our lifetime."

Sir Paul Nurse, Cancer Research UK

Your research papers will be:

- available free of charge to the entire biomedical community
- peer reviewed and published immediately upon acceptance
- cited in PubMed and archived on PubMed Central
- yours — you keep the copyright

Submit your manuscript here:  
[http://www.biomedcentral.com/info/publishing\\_adv.asp](http://www.biomedcentral.com/info/publishing_adv.asp)

