

Research article

Open Access

## Intracellular diffusion restrictions in isolated cardiomyocytes from rainbow trout

Niina Sokolova, Marko Vendelin and Rikke Birkedal\*

Address: Laboratory of Systems Biology, Institute of Cybernetics, Tallinn University of Technology, Akadeemia 21, 12618 Tallinn, Estonia

Email: Niina Sokolova - [niina@sysbio.ioc.ee](mailto:niina@sysbio.ioc.ee); Marko Vendelin - [markov@sysbio.ioc.ee](mailto:markov@sysbio.ioc.ee); Rikke Birkedal\* - [rikke@sysbio.ioc.ee](mailto:rikke@sysbio.ioc.ee)

\* Corresponding author

Published: 17 December 2009

Received: 17 July 2009

*BMC Cell Biology* 2009, **10**:90 doi:10.1186/1471-2121-10-90

Accepted: 17 December 2009

This article is available from: <http://www.biomedcentral.com/1471-2121/10/90>

© 2009 Sokolova et al; licensee BioMed Central Ltd.

This is an Open Access article distributed under the terms of the Creative Commons Attribution License (<http://creativecommons.org/licenses/by/2.0>), which permits unrestricted use, distribution, and reproduction in any medium, provided the original work is properly cited.

### Abstract

**Background:** Restriction of intracellular diffusion of adenine nucleotides has been studied intensively on adult rat cardiomyocytes. However, their cause and role *in vivo* is still uncertain. Intracellular membrane structures have been suggested to play a role. We therefore chose to study cardiomyocytes from rainbow trout (*Oncorhynchus mykiss*), which are thinner and have fewer intracellular membrane structures than adult rat cardiomyocytes. Previous studies suggest that trout permeabilized cardiac fibers also have diffusion restrictions. However, results from fibers may be affected by incomplete separation of the cells. This is avoided when studying permeabilized, isolated cardiomyocytes. The aim of this study was to verify the existence of diffusion restrictions in trout cardiomyocytes by comparing ADP-kinetics of mitochondrial respiration in permeabilized fibers, permeabilized cardiomyocytes and isolated mitochondria from rainbow trout heart. Experiments were performed at 10, 15 and 20°C in the absence and presence of creatine.

**Results:** Trout cardiomyocytes hypercontracted in the solutions used for mammalian cardiomyocytes. We developed a new solution in which they retained their shape and showed stable steady state respiration rates throughout an experiment. The apparent ADP-affinity of permeabilized cardiomyocytes was different from that of fibers. It was higher, independent of temperature and not increased by creatine. However, it was still about ten times lower than in isolated mitochondria.

**Conclusions:** The differences between fibers and cardiomyocytes suggest that results from trout heart fibers were affected by incomplete separation of the cells. However, the lower ADP-affinity of cardiomyocytes compared to isolated mitochondria indicate that intracellular diffusion restrictions are still present in trout cardiomyocytes despite their lower density of intracellular membrane structures. The lack of a creatine effect indicates that trout heart lacks mitochondrial creatine kinase tightly coupled to respiration. This argues against diffusion restriction by the outer mitochondrial membrane. These results from rainbow trout cardiomyocytes resemble those from other low-performance hearts such as neonatal rat and rabbit hearts. Thus, it seems that metabolic regulation is related to cardiac performance, and it is likely that rainbow trout can be used as a model animal for further studies of the localization and role of diffusion restrictions in low-performance hearts.

## Background

In permeabilized preparations of mammalian oxidative muscles such as red skeletal muscle and the heart, diffusion of ADP and phosphate from the surrounding medium to the adenine nucleotide translocase (ANT) in the inner mitochondrial membrane is restricted [1,2]. Especially the diffusion restriction of ADP in adult rat cardiomyocytes has received much attention, because the compromised energetic balance induced by ischemia-reperfusion damage is associated with diminished diffusion restrictions [3,4].

The existence of diffusion restrictions is indicated by that the apparent ADP-affinity of mitochondria *in situ* in permeabilized fibers and cardiomyocytes is much lower ( $K_{M_{ADP}} \sim 300 \mu\text{M}$  in rat fibers and cardiomyocytes) than the ADP-affinity of isolated mitochondria ( $K_{M_{ADP}} < 20 \mu\text{M}$ ) [5-7]. It was first proposed that this was due to low permeability of the outer mitochondrial membrane, which is partially overcome by creatine kinase (CK) [8,9]. In addition to the outer mitochondrial membrane, some diffusion restrictions also reside in the cytosol. They lead to a preferential metabolic channeling of ADP from ATPases to mitochondria [10]. Likewise, ATP from mitochondria is channeled to the sarcoplasmic reticulum (SR)  $\text{Ca}^{2+}$ -ATPase (SERCA) and myosin ATPase [11]. This led to the hypothesis that cytosolic diffusion restrictions divide cardiomyocytes into subcellular compartments termed "intracellular energetic units" (ICEUs) [12-14]. Their confinement of ADP and ATP in small compartments with short diffusion distances enhances the functional coupling between adjacent energy producing mitochondria and energy consuming ATPases.

It is still not clear what causes the diffusion restrictions in rat cardiomyocytes. The importance of the outer mitochondrial membrane has recently regained attention in studies on isolated brain mitochondria suggesting that its permeability is regulated by tubulin [15,16]. Possible candidates for cytosolic diffusion restrictions are membrane structures such as SR and t-tubules [12,14]. But also cytoskeletal components such as tubulin have been proposed [6]. These structures are rather densely packed in adult rat cardiomyocytes. In contrast, cardiomyocytes from rainbow trout (*Oncorhynchus mykiss*) have a relatively simple morphology. They are only 2-5  $\mu\text{m}$  thick [17,18], have no t-tubules and a sparsely developed SR [19]. Below the sarcolemma is a single ring of myofilaments surrounding a central core of mitochondria [18,20]. Thus, if t-tubules and SR cause diffusion restriction, we would expect diffusion restrictions to be much smaller in trout cardiomyocytes.

Previous studies on rainbow trout permeabilized cardiac fibers suggest that despite their simple morphology, they

also have intracellular diffusion restrictions. As in rat permeabilized fibers, their apparent ADP-affinity is much lower than that expected for isolated mitochondria, but it is increased by the addition of creatine. Furthermore, a competitive assay with excess pyruvate kinase activity only partially inhibits mitochondrial respiration [21,22]. However, the results from permeabilized fibers may be affected by incomplete cell separation, and/or clustering of fibers on top of the stirrer during oxygraphy measurements. These are avoided with permeabilized cardiomyocytes, since the single cells disperse evenly in the oxygraphy medium. Rat permeabilized fibers and cardiomyocytes have similar ADP-kinetics [6], which reaffirm the reliability of the results. However, trout permeabilized fibers have given contradictory results, because creatine lowers the apparent  $K_{M_{ADP}}$  [21,23], but there does not seem to be a mitochondrial CK tightly coupled to respiration [22]. The aim of this study was to control the existence of diffusion restrictions in trout cardiomyocytes by comparing the apparent ADP-affinity in permeabilized cardiac fibers, permeabilized isolated cardiomyocytes and isolated mitochondria. An effect of temperature on diffusion restrictions in terms of apparent  $K_{M_{ADP}}$  was found previously on both trout and rat cardiac fibers [23,24]. This is important for the rainbow trout which lives at a temperature range of 2-23°C. Furthermore, due to the different temperature sensitivity of metabolism and diffusion speed, the effect of temperature allows us to draw conclusions about the importance of diffusion distance as one of the restricting factors. Therefore, the experiments were performed at 10, 15 and 20°C. Additionally, because CK may play an important role in facilitating ADP-diffusion across diffusion restriction barriers, the experiments were performed in both the absence and presence of creatine.

The experiments were complicated by hypercontraction of isolated trout cardiomyocytes in the R(respiration)-solution used previously for permeabilized fibers. This solution was originally developed for mammalian tissue and will be referred to as "mammalian R-solution". Therefore, we first had to develop a new "fish R-solution" for trout cardiomyocytes, in which they maintained shape and showed stable steady state respiration rates throughout each experiment. The results on cardiomyocytes were different from those on fibers suggesting that results from trout fibers were affected by incomplete separation of the cells. However, the apparent ADP-affinity of cardiomyocytes was still about an order of magnitude higher than that of isolated mitochondria. This indicates that trout cardiomyocytes still have diffusion restrictions despite their low density of intracellular membrane structures. However, in cardiomyocytes, creatine did not lower the apparent  $K_{M_{ADP}}$  suggesting that there is no mitochondrial creatine kinase tightly coupled to respiration to overcome diffusion restrictions.

## Methods

### Animals

Rainbow trout were obtained from local fish farms (Simuna Ivax OÜ, Lääne-Virumaa, and Forkala OÜ, Roosna-Alliku, Estonia). They were kept in a 1200 liter fresh-water tank at  $15 \pm 1^\circ\text{C}$ , and fed regularly with commercial fish food. They were allowed to acclimatize for at least 3 weeks before the experiments. All procedures were approved by the Estonian National Committee for Ethics in Animal Experimentation (Estonian Ministry of Agriculture). The fish was stunned by a single blow to the head followed immediately by a cut of the spine. The heart was excised and immediately transferred to ice-cold solution to minimize ischemia.

### Preparation of permeabilized cardiac fibers

The excised heart was transferred to ice-cold isolation solution (see composition below). The ventricle was isolated and the spongy layer and compact layer were separated. The spongy tissue was cut into six smaller pieces, which were transferred to fresh S(skinning)-solution in a petri-dish on ice. Each piece was carefully dissected using fine tweezers (Dumont 3, Dumostar, World Precision Instruments) to separate the tissue into thin bundles of cells that were interconnected. The fibers were permeabilized by incubation for 30 min under continuous mixing in S-solution containing  $50 \mu\text{g/ml}$  saponin at  $4^\circ\text{C}$ . After this, they were washed twice for 10 min in S-solution without saponin and stored at  $4^\circ\text{C}$  in S-solution until use within less than 3 hours.

### Isolation of cardiomyocytes

The isolation of trout cardiomyocytes has been described previously [18]. The heart was excised with atrium and bulbus arteriosus and transferred to ice-cold isolation solution (see composition below). A cannula was inserted through the bulbus arteriosus into the ventricle and the heart was perfused in retrograde manner with isolation solution for 8-10 min to wash the heart free from blood and to lower extracellular  $\text{Ca}^{2+}$ -concentration. After washing, the heart was perfused with isolation solution containing  $0.5 \text{ mg/ml}$  trypsin,  $0.75 \text{ mg/ml}$  collagenase A and  $0.75 \text{ mg/ml}$  BSA for 18-20 min to digest the extracellular matrix and dissociate the cardiomyocytes. After digestion, the heart was taken off the cannula and cut into smaller pieces. The cardiomyocytes were suspended with a 1 ml pipette, where the tip had been cut off in order to minimize mechanical damage. The cell suspension was filtered through nylon tissue, and healthy cells were isolated by sedimentation. The isolation procedure was carried out at room temperature, and the isolated cells were kept in isolation solution at  $4^\circ\text{C}$  until use within at least 3 hours.

### Isolation of mitochondria

Mitochondria were isolated by differential centrifugation of tissue homogenate similar to in Bouzidi et al. [25]. The

heart was excised and transferred to buffer A (see composition below). The atrium and bulbus arteriosus were cut off and the ventricle was blotted dry and weighed. After one more wash in fresh buffer A it was blotted dry again and cut into smaller pieces ( $2 \times 2 \text{ mm}$ ), which were incubated for 5 min in 2.5 ml buffer A containing 1 mg subtilisin per g ventricular muscle. At the end of incubation, 12.5 ml buffer A was added and the sample was centrifuged at 15000 g for 5 min. The resulting pellet was re-suspended in 15 ml buffer A and centrifuged at 15000 g for 5 min. The washed pellet was re-suspended in 15 ml buffer A and transferred to a glass homogenizer with a Teflon pestle. The suspension was homogenized at 500 rpm in three rounds of 1-2 seconds and centrifuged for 5 min at 1000 g. The supernatant was retained, while the pellet was re-suspended in 10 ml buffer A, homogenized at 750 rpm in three rounds of 1-2 seconds and centrifuged for 5 min at 1000 g. The two supernatants were spun at 14000 g for 10 min. Each pellet was re-suspended in 0.9 ml buffer A and centrifuged for 5 min at 2000 g. The resulting supernatants were then centrifuged for 15 min at 8000 g, and the pellets containing the mitochondria were resuspended in 0.4 ml buffer A. The isolation of mitochondria was carried out at  $0-4^\circ\text{C}$ , and the isolated mitochondria were kept on ice until use within 3 hours.

### Recording of ADP-stimulated oxygen consumption

Oxygen consumption of the sample was recorded in an Oroboros oxygraph-2k (Oroboros Instruments, Austria), and the rate of oxygen consumption ( $\text{nmol O}_2 \text{ ml}^{-1} \text{ min}^{-1}$ ) was calculated by software developed in our laboratory. To prepare permeabilized fibers for oxygraphy measurements, they were washed twice for 5 min in the R-solution used for oxygraphy. This was either the mammalian R-solution used previously [21-23] and composed for mammalian permeabilized fibers, or the new fish R-solution (see compositions below). These washes served to remove all adenine nucleotides, creatine and phosphocreatine that were present in the S-solution, in which the fibers were kept until use. For isolated cardiomyocytes and isolated mitochondria, which were kept in solutions without these components, a known volume of suspension was added to the oxygraph chamber with fish R-solution. Isolated cardiomyocytes were permeabilized in the oxygraph chamber by the addition of  $20 \mu\text{g ml}^{-1}$  saponin to the chamber at least 4-10 min before the first recordings. This concentration of saponin was chosen on the basis of preliminary experiments, where cells were incubated with 1 mM ADP, and the increase in respiration rate was followed in time until it reached steady state. Among the different saponin-concentrations tested, we observed that  $20 \mu\text{g ml}^{-1}$  led to a steady state respiration rate within 4-10 min (longer time at cold temperature) that was maintained for more than 30 min (results not shown).

Oxygen consumption was stimulated by stepwise increases in the ADP-concentration. For most experiments, 8  $\mu\text{M}$  cytochrome c and 30  $\mu\text{M}$  atractyloside was added at the end of the ADP-titration to test the intactness of the outer and inner mitochondrial membrane, respectively. At the end of the experiments, permeabilized fibers were taken out of the chamber to determine their dry weight, and allow for the expression of their respiration rate as  $\text{nmol O}_2 \text{ min}^{-1} \text{ mg dw}^{-1}$ . For isolated cardiomyocytes and isolated mitochondria, an aliquot of the suspension was frozen to later determine the protein concentration by a standard bicinchoninic acid (BCA) colorimetric assay (Thermo Scientific). Knowing the volume of suspension added to the oxygraph, respiration rate was calculated as  $\text{nmol O}_2 \text{ min}^{-1} \text{ mg protein}^{-1}$ .

### Solutions

S(skinning)-solution for preparation of permeabilized fibers (originally developed by [26]) was composed of (mM):  $\text{CaK}_2\text{EGTA}$  2.77,  $\text{K}_2\text{EGTA}$  7.23,  $\text{MgCl}_2$  6.56, imidazole 20, taurine 20, dithiothreitol 0.5, KOH 50, MES 50,  $\text{Na}_2\text{ATP}$  5.7, phosphocreatine 15, pH adjusted to 7.1 with KOH.

Isolation solution for isolation of cardiomyocytes [18] was composed of (mM): NaCl 100, KCl 10,  $\text{KH}_2\text{PO}_4$  1.2,  $\text{MgSO}_4$  4, taurine 50, glucose 20, Hepes 10, pH adjusted to 6.9 with NaOH.

Buffer A for isolation of mitochondria [25] was composed of (mM): sucrose 70, mannitol 220, EDTA 1, Hepes 10, pH adjusted to 7.4 with KOH, 0.5% bovine serum albumin (BSA) added immediately before use.

Mammalian R(respiration)-solution (originally developed by [26]) was composed of (mM):  $\text{CaK}_2\text{EGTA}$  2.77,  $\text{K}_2\text{EGTA}$  7.23,  $\text{MgCl}_2$  1.38, imidazole 20, taurine 20, dithiothreitol 0.5,  $\text{K}_2\text{HPO}_4$  3, KOH 90, NaOH 10, MES 100, glutamate 5, malate 2, pH adjusted to 7.1 with KOH, 0.2% BSA added immediately before use.

Fish R(respiration)-solution was composed of (mM): KCl 20, K-lactobionate 85,  $\text{MgCl}_2$  3,  $\text{KH}_2\text{PO}_4$  5, EGTA 0.4, dithiothreitol 0.3, glutamate 5, malate 2, taurine 20, Hepes 20, pH adjusted to 7.1 with KOH, 0.2% BSA added immediately before use.

### Imaging of isolated cardiomyocytes

Isolated rat cardiomyocytes were provided from other experiments in our laboratory. For transmission images, the cells were mixed in isolation solution and imaged under a Nikon Ti-U microscope with a 60 $\times$ /NA 1.2 water-immersed objective. For confocal images, rat and trout cardiomyocytes were kept in  $\text{Ca}^{2+}$ -free Ringer and isolation solution, respectively, containing 30 mM BDM (2,3-

butanedione monoxime). The sarcolemma and mitochondria were labeled by incubation for at least 15 min with the membrane potential sensitive dye Di-8-ANEPPS (5  $\mu\text{M}$ ; Invitrogen), and the mitochondrial potential sensitive dye Mitotracker Red (1  $\mu\text{M}$ ; Invitrogen), respectively. Three-dimensional confocal images (z-stacks) were acquired on a Zeiss LSM 510 confocal microscope with a 63 $\times$ /NA 1.2 water-immersed objective. The images were deconvolved by software developed in our laboratory using the point spread function recorded at 543 nm [27].

### Data and statistics

Normalized kinetic parameters such as basal respiration rate in the absence of ADP ( $V_0$ ), maximal respiration rate at saturating ADP ( $V_{\text{max}}$ ), acceptor control ratio ( $\text{ACR} = V_{\text{max}}/V_0$ ), and the ADP-affinity in terms of the Michaelis-Menten constant ( $K_{\text{M ADP}}$ ) were calculated using in-house software.

All values are presented as mean  $\pm$  SEM, and statistical tests are described in the legends of the respective figures and tables.

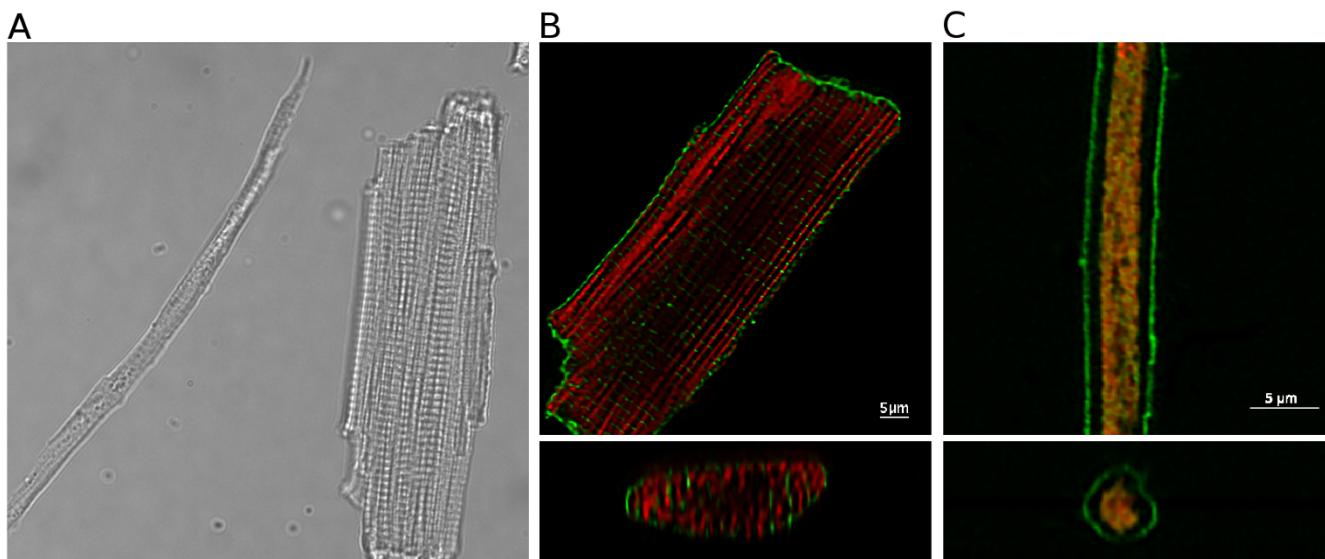
## Results

### Morphology of rainbow trout compared to rat cardiomyocytes

To illustrate the size and morphology differences between trout and rat cardiomyocytes, we recorded transmission images of the two cell types together. A representative example is shown in Fig. 1A. For more detail, we recorded confocal images of cells, where the sarcolemma was labeled with the potential sensitive indicator di-8-ANEPPS (green) and mitochondria were labeled with the potential sensitive Mitotracker Red CMXRos (red). The deconvolved images and reconstructed cross sections are shown for rat and trout cardiomyocytes in Fig. 1B and 1C, respectively. These pictures illustrate that rat cardiomyocytes have several parallel rows of mitochondria that are organized as in a crystal lattice in all three dimensions [20]. This regular arrangement correlates with that of the interspersed parallel rows of myofilaments [28]. Notice also the t-tubular invaginations of the sarcolemma that extend into the center of the cell. In contrast, trout cardiomyocytes have a central core of mitochondria, which are organized rather chaotically [20]. The gap from the mitochondrial core to the sarcolemma is occupied by a single layer of myofilaments. Of note is the small diameter compared to rat cardiomyocytes and the absence of t-tubules.

### Development of a new intracellular solution for trout cardiomyocytes

Recording of respiration of isolated cardiomyocytes was complicated with the use of "mammalian R-solution" used in previous studies on permeabilized trout cardiac fibers [21-23]. The mammalian R-solution was originally



**Figure 1**  
**Comparison of trout and rat cardiomyocytes.** (A) Transmission image of trout and rat cardiomyocytes next to each other in the same solution. Trout cardiomyocytes can be very long, and only half of the trout cardiomyocyte was within the camera field of view. (B, C) Deconvolved confocal images of rat cardiomyocyte (B) and trout cardiomyocyte (C) labeled with di-8-ANEPPS (green; labeling sarcolemma) and mitotracker Red CMXRos (red; labeling mitochondria). The upper image shows one image from a confocal z-stack, and lower image shows re-constructed cross section. Note different size of the scale bars.

developed for studies on mammalian tissue, but permeabilized trout fibers had an acceptable ACR in this solution (Table 1). However, when isolated trout cardiomyocytes were permeabilized in this solution, their mitochondria swelled immediately followed by hypercontraction and the formation of blebs around the hypercontracted cells. We developed a new "fish R-solution" in which isolated trout cardiomyocytes maintained their morphology and showed stable steady-state respiration rates at all concentrations of ADP (Fig. 2). Interestingly, a few preliminary experiments to test this solution showed that when rat cardiomyocytes were permeabilized in the fish R-solution,

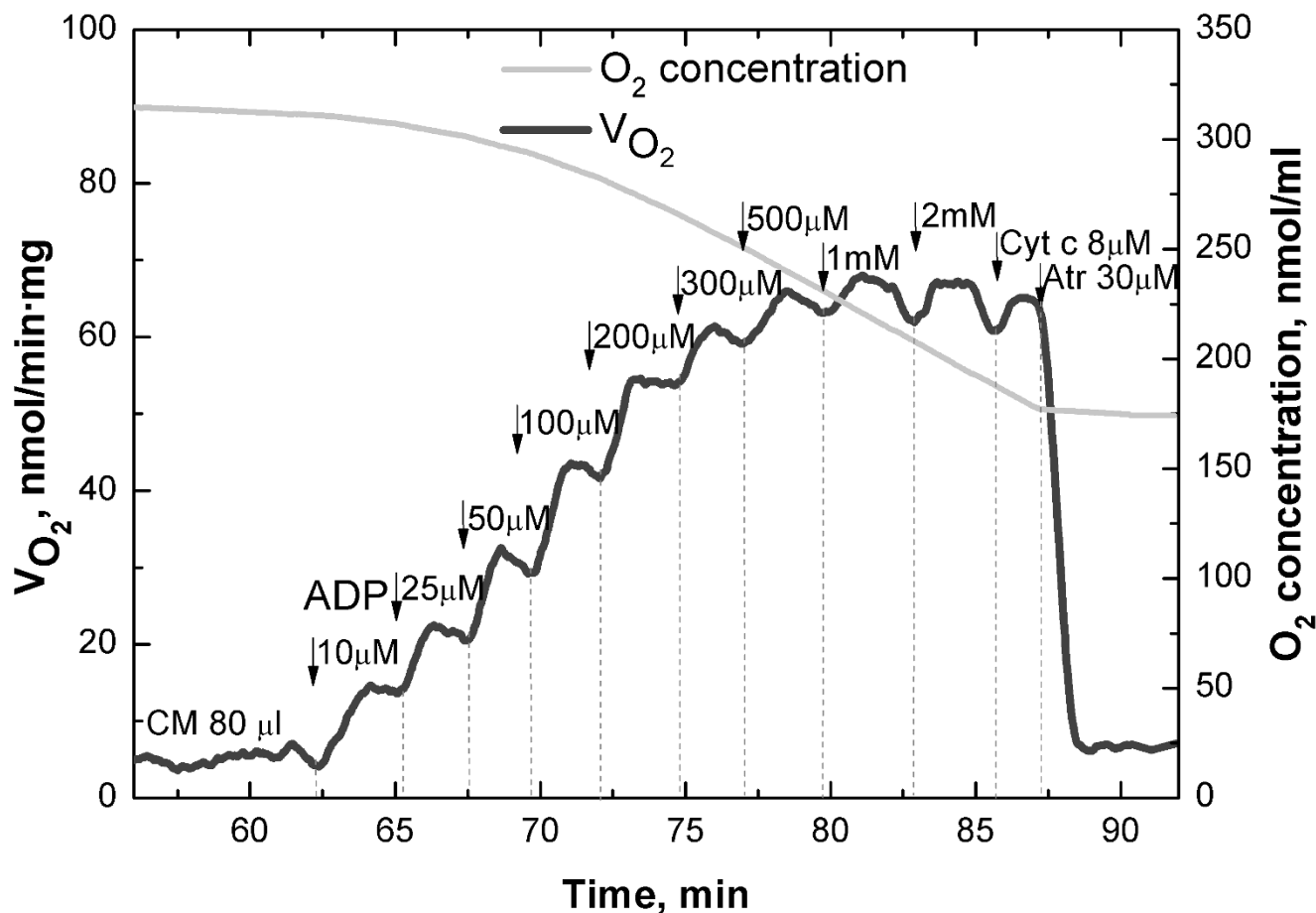
they hypercontracted and oxygen consumption was virtually absent.

The new intracellular solution for trout cardiomyocytes was developed by trial and error. An important observation in this development was that trout cardiomyocytes maintained their overall morphology in a solution with high KCl [29]. Although their mitochondria swelled due to the high chloride concentration, they did not hypercontract. Thus, this solution was used as a starting point to approach the MRO5 solution, which is recommended for permeabilized cells [30]. The composition of the final fish

**Table 1: ADP-kinetics of respiration in permeabilized fibres in mammalian R-solution**

Temp	Creatine	n	V <sub>0</sub>	V <sub>max</sub>	ACR	K <sub>M ADP</sub>
10°C	-	5	2.28 ± 0.21	17.95 ± 2.59	7.90 ± 0.91	509 ± 57
	+	5	2.15 ± 0.25	15.88 ± 2.59	7.38 ± 0.68	252 ± 48
15°C	-	5	3.39 ± 0.45	22.17 ± 3.46	6.62 ± 0.85	399 ± 34
	+	5	3.30 ± 0.49	19.37 ± 3.69	5.82 ± 0.77	200 ± 17 *
20°C	-	5	5.48 ± 0.18	24.22 ± 1.97	4.42 ± 0.32	178 ± 32
	+	5	5.21 ± 0.45	22.71 ± 3.78	4.26 ± 0.39	129 ± 30

Respiration was stimulated by increasing concentrations of ADP, and the kinetic parameters were calculated: V<sub>0</sub> (nmol O<sub>2</sub> min<sup>-1</sup> mg dw<sup>-1</sup>) is the basal respiration rate before addition of ADP; V<sub>max</sub> (nmol O<sub>2</sub> min<sup>-1</sup> mg dw<sup>-1</sup>) is the maximal respiration rate at saturating ADP; ACR = V<sub>max</sub>/V<sub>0</sub>; K<sub>M ADP</sub> (μM) is the ADP-concentration at which V = V<sub>max</sub>/2. V<sub>max</sub> and K<sub>M ADP</sub> were calculated by a hyperbolic fit of the data. Experiments were performed at three different temperatures in the absence and presence of creatine. Number of experiments is given in column n. At each temperature, results in the absence and presence of creatine were compared by a paired Students t-test. \* denotes P < 0.05 significantly different in the presence of creatine. The effect of creatine at 10°C was almost significant (P = 0.0533). Temperature-dependency was assessed by a one-way ANOVA in the absence and presence of creatine, respectively. Temperature had a significant effect on V<sub>0</sub> (P < 0.001), ACR (P < 0.05) and K<sub>M ADP</sub> in the absence of creatine (P < 0.001).



**Figure 2**

**Example of respiration of permeabilized cardiomyocytes.** Representative example recorded at 10°C in the absence of creatine showing the respiration rate of permeabilized trout cardiomyocytes (CM) during stepwise increases in ADP-concentration as indicated. Note that the respiration rate was relatively stable at each step of the ADP-titration, that cytochrome c did not increase respiration rate, and that atractyloside brought respiration rate down to the same level as the basal respiration rate before addition of ADP.

R-resolution is shown in Table 2, where it is compared to the mammalian R-solution, the high KCl-solution [29] and MiR05 [30]. Compared to the MiR05 solution, the main difference is that the fish R-solution contains more K-lactobionate, 20 mM KCl and no sucrose. The concentration of K-lactobionate could be varied between 20 and 130 mM without any gross effect on the oxygraph results (not shown). We chose an intermediate concentration of 85 mM, so that total K<sup>+</sup>-concentration was 110 mM. This is close to the concentration in the mammalian R-solution, the 108 mM in sheep purkinje cells [31], and the 118 mM in frog heart (calculated from [32] using an activity coefficient of 0.73 [33]). The presence of sucrose did not seem to affect the results, so we left it out to keep the osmolarity between that of the mammalian R-solution and MiR05 (Table 2). We speculate whether KCl was important. In some cell types, chloride transport through

a mitochondrial chloride intracellular channel (mtCLIC) is believed to be important for maintaining mitochondrial membrane potential [34]. The addition of 20 mM KCl gave a total Cl<sup>-</sup>-concentration of 26 mM, which is very close to the 25 mM reported for chicken cultured cardiomyocytes [35] and calculated for frog ventricle (using an activity of 17.6 mM [36] and an activity coefficient of 0.7 as in [35]). With a physiological level of chloride, we could be sure that mitochondrial CK (if present) would not dissociate from the inner mitochondrial membrane, as it is known to happen in solutions with high KCl [37]. The 0.3 mM dithiothreitol in the fish R-solution ensures that the thiol-group of Cys-282 in the active site CK is reduced, which is crucial for CK function [38]. Ionic strength is intermediate between that of the mammalian R-solution and the MiR05 (Table 2).

**Table 2: Comparison of intracellular solutions**

Compound	Mammalian R-solution	KCl	MiR05	Fish R-solution
CaK <sub>2</sub> EGTA	2.77			
K <sub>2</sub> EGTA	7.23			
Imidazole	20			
K-MES	100			
KCl		125		20
Sucrose			110	
K-lactobionate			60	85
MgCl <sub>2</sub>	1.38	3	3	3
K <sub>2</sub> HPO <sub>4</sub> /KH <sub>2</sub> PO <sub>4</sub>	3	5	10	5
Taurine	20		20	20
Dithiothreitol	0.3	0.3		0.3
EGTA		0.4	0.5	0.4
Hepes		20	20	20
Glutamate	5	5	5	5
Malate	2	2	2	2
BSA	2 mg/ml	2 mg/ml	1 mg/ml	2 mg/ml
pH	7.1	7.1	7.1	7.1
Ionic strength	142	142	95	122
Osmolarity	288	323	330	301

Composition of the mammalian R-solution, KCl-solution (Oroboros, Austria), mitomed MiR05 (Oroboros, Austria) used for mammalian cardiomyocytes and the fish R-solution developed for the present study on permeabilized trout cardiomyocytes. All units are in mM except osmolarity, which is in mOsm.

We were able to compare the ADP-kinetics of respiration in mammalian R-solution and fish R-solution in permeabilized fibers, which survived in both solutions. The results are shown in Table 1 and 3, respectively. In agreement with previous studies, the results from permeabilized fibers had two apparent  $K_{M,ADP}$  values in the absence of creatine [23], but for simplicity we show only the apparent  $K_{M,ADP}$  obtained by fitting with a single hyperbolic equation.  $K_{M,ADP}$  was higher in the fish R-solution only at 15°C in the absence of creatine ( $P < 0.05$ ). However, the main difference was that fibers had a better performance at high temperatures in fish R-solution:  $V_0$  was lower at 20°C ( $P < 0.001$  and  $P < 0.01$  in the absence and presence of creatine, respectively), and ACR was higher at both 15 and 20°C ( $P < 0.05$  in the absence of creatine at both temperatures, and  $P < 0.01$  and  $0.001$  in the presence of creatine at 15 and 20°C, respectively). The remainder of this article focuses on the oxygraphy data obtained using this fish R-solution.

#### ADP-kinetics of respiration in permeabilized fibers

The ADP-kinetics of respiration in permeabilized fibers is shown in Table 3 and Fig. 3.  $V_0$ ,  $V_{max}$  and ACR were similar in the absence and presence of creatine at each temperature.  $V_0$  increased with temperature, whereas  $V_{max}$  and ACR were temperature-independent.  $K_{M,ADP}$  was lowered by creatine, and this was significant at 10 and 15°C.  $K_{M,ADP}$  decreased with temperature, but the temperature-effect was only significant in the absence of creatine (Table 3).

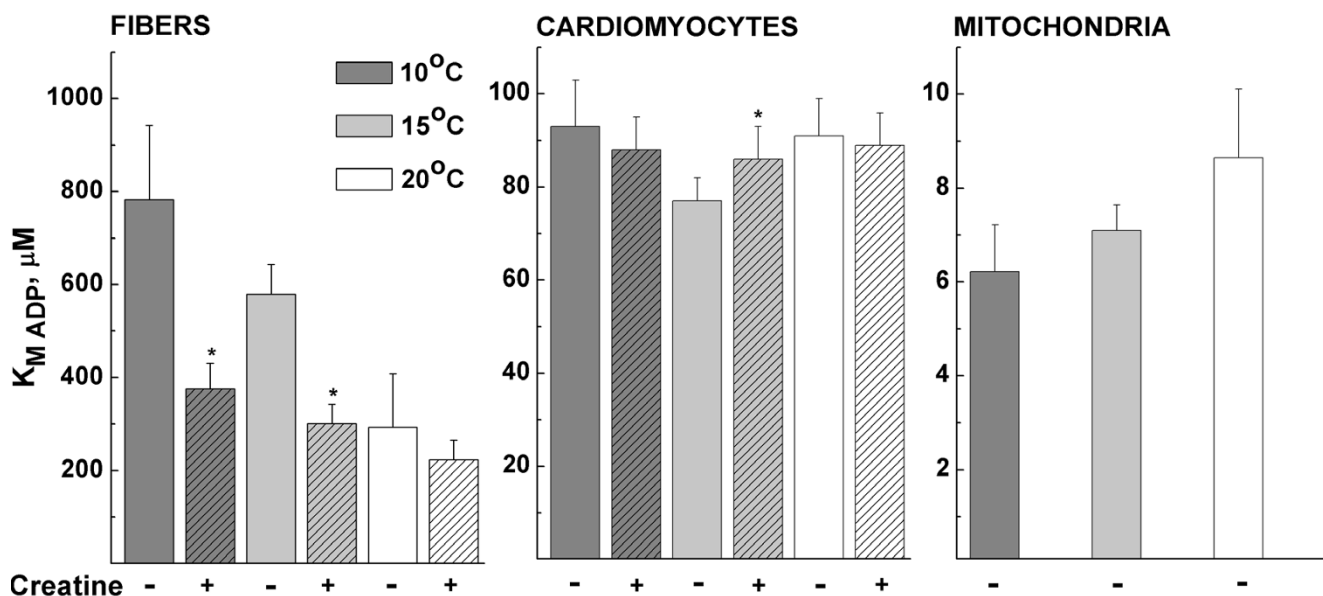
#### ADP-kinetics of respiration in permeabilized cardiomyocytes

The ADP-kinetics of respiration in permeabilized isolated cardiomyocytes is shown in Table 4 and Fig. 3.  $V_0$  was slightly higher and ACR slightly lower in the presence than in the absence of creatine at 15 and 20°C (Table 4). However, the most important result is the apparent  $K_{M,ADP}$ , which is interesting to compare with that of fibers

**Table 3: ADP-kinetics of respiration in permeabilized fibres in fish R-solution**

Temp	Creatine	n	$V_0$	$V_{max}$	ACR	$K_{M,ADP}$
10°C	-	6	2.34 ± 0.21	24.85 ± 3.44	10.68 ± 1.22	783 ± 160
	+	6	2.01 ± 0.19	22.6 ± 3.83	11.03 ± 1.62	376 ± 55 *
15°C	-	5	2.78 ± 0.32	29.13 ± 3.16	10.66 ± 1.01	579 ± 64
	+	5	2.51 ± 0.08	27.25 ± 2.22	10.96 ± 1.11	301 ± 42 *
20°C	-	5	3.35 ± 0.07	28.06 ± 3.37	8.40 ± 1.05	293 ± 115
	+	5	3.37 ± 0.15	30.59 ± 1.83	9.10 ± 0.52	224 ± 42

Notation and statistical tests are as in Table 1. \* denotes  $P < 0.05$  significantly different in the presence of creatine. Temperature had a significant effect on  $V_0$  ( $P < 0.05$  and  $P < 0.001$  in the absence and presence of creatine, respectively) and  $K_{M,ADP}$  in the absence of creatine ( $P < 0.05$ ).



**Figure 3**  
**Apparent ADP-affinity in fibers, cardiomyocytes and mitochondria.** The apparent  $K_{M ADP}$  of permeabilized fibers, permeabilized cardiomyocytes and isolated mitochondria as obtained by fitting the data with a single hyperbolic equation. All experiments were done at 10, 15 and 20°C, and experiments on fibers and cardiomyocytes were performed in the absence and presence of creatine as indicated below the columns. Notice the different scales on the y-axes.

(compare in Fig. 3, note different scales on the y-axes). In contrast to permeabilized fibers, permeabilized cardiomyocytes had only one apparent  $K_{M ADP}$  in the absence of creatine. This apparent  $K_{M ADP}$  was lower than in fibers and similar at all temperatures. It was not lowered by creatine and even showed a slight increase at 15°C. The fact that creatine did not lower  $K_{M ADP}$  was expected on the basis of a previous study [22], and suggests that trout cardiomyocytes do not have a mitochondrial CK, which is tightly coupled to respiration. The discrepancy between fibers and cardiomyocytes is discussed further below.

**ADP-kinetics of respiration in isolated mitochondria**

In order to make any conclusions about diffusion restrictions in trout cardiomyocytes, their apparent  $K_{M ADP}$

should be compared with that of isolated mitochondria. The ADP-stimulated respiration kinetics of isolated mitochondria is shown in Table 5 and Fig. 3. In contrast to permeabilized cardiomyocytes,  $V_{max}$  and ACR of isolated mitochondria increased with temperature (Table 5). In another study on rainbow trout skeletal oxidative muscle,  $V_{max}$  increased but ACR decreased with assay temperature [39]. We are at present unable to explain the different temperature dependence of  $V_{max}$  and ACR in permeabilized cardiomyocytes and isolated mitochondria. The main finding is that the apparent  $K_{M ADP}$  of isolated mitochondria was about an order of magnitude lower than that of permeabilized cardiomyocytes (compare in Fig. 3, note different scales on the y-axes).

**Table 4: ADP-kinetics of respiration in permeabilized cardiomyocytes**

Temp.	Creatine	n	$V_0$	$V_{max}$	ACR	$K_{M ADP}$
10°C	-	7	4.34 ± 0.37	52.63 ± 6.02	12.09 ± 0.67	93 ± 10
	+	7	5.40 ± 0.38 **	49.38 ± 4.70	9.11 ± 0.40 **	88 ± 7
15°C	-	8	5.79 ± 0.74	65.33 ± 5.95	12.64 ± 1.65	77 ± 5
	+	8	7.45 ± 0.55 *	63.99 ± 4.44	8.88 ± 0.78 *	86 ± 7 *
20°C	-	7	5.58 ± 1.13	63.21 ± 10.02	12.34 ± 1.08	91 ± 8
	+	7	6.04 ± 0.86	58.21 ± 9.02	9.56 ± 0.42	89 ± 7

Notation and statistical tests are as in Table I. \* and \*\* denote  $P < 0.05$  and  $P < 0.01$ , respectively, significantly different in the presence of creatine.



**Table 5: ADP-kinetics of respiration in isolated mitochondria**

Temp.	n	$V_0$	$V_{max}$	ACR	$K_{M ADP}$
10°C	6	11.29 ± 2.34	46.73 ± 12.22	4.05 ± 0.28	6.22 ± 0.99
15°C	6	12.33 ± 4.89	83.18 ± 18.28	7.0 ± 0.64	7.10 ± 0.55
20°C	6	16.75 ± 2.82	131.22 ± 17.29	8.03 ± 0.51	8.65 ± 1.46

Notation and statistical tests are as in Table 1.  $V_{max}$  and ACR increased with temperature ( $P < 0.01$  and  $P < 0.001$ , respectively).

## Discussion

The main aim of this study was to verify that rainbow trout cardiomyocytes have intracellular diffusion restrictions by comparing ADP-kinetics of mitochondrial respiration in permeabilized fibers, permeabilized cardiomyocytes and isolated mitochondria. The outcomes were the following: First, isolated trout cardiomyocytes hypercontracted in solutions designed for mammalian preparations, so we had to develop a new "fish R-solution". Second, the discrepancy between fibers and cardiomyocytes suggest that previous results on trout cardiac fibers were affected by incomplete separation of the cells. Third, despite the low density of intracellular membrane structures in trout cardiomyocytes (Fig. 1), diffusion of ADP from solution to the mitochondria *in situ* is restricted. Fourth, trout cardiomyocytes seem to lack a mitochondrial CK tightly coupled to respiration. The present results on trout cardiomyocytes are very similar to those from other low-performance hearts from for example neonatal rats and rabbits [40,41].

### A new intracellular solution for permeabilized trout cardiomyocytes

It was surprising that isolated cardiomyocytes hypercontracted upon permeabilization in the "mammalian R-solution" that seemed to work for fibers. Therefore, we developed a new "fish R-solution". We were able to compare these solutions on permeabilized fibers. They had a better performance in terms of a lower  $V_0$  and higher ACR at high temperatures in the fish R-solution than in the mammalian R-solution (Tables 1 and 3, statistics are given in the Results section). In the fish R-solution, isolated cardiomyocytes maintained their morphology and showed stable steady state respiration rates throughout each experiment (Fig. 2). The addition of cytochrome c at the end of the experiment did not increase respiration rate showing that the outer mitochondrial membrane was kept intact. Atractyloside brought respiration rate down to the basal respiration rate recorded in the absence of ADP showing that the inner mitochondrial membrane was also intact (Fig. 2). Taken together, this validates our use of the fish R-solution for permeabilized trout heart preparations.

### Discrepancy between fibers and cardiomyocytes

Kongas et al. suggested that the high apparent  $K_{M ADP}$  in fibers may be due to incomplete separation of the cells,

which leads to larger diffusion distances [42]. Through the window in the oxygraph chamber, we observed that fibers tend to cluster on top of the magnetic stirrer during oxygraphy measurements. This is avoided with permeabilized cardiomyocytes, where all cells are completely separated, and we observed them to be evenly distributed in the oxygraph solution. Incomplete separation of the cells is not a problem in permeabilized fibers from rat heart, which have the same apparent  $K_{M ADP}$  as permeabilized cardiomyocytes [6,43]. However, studies on trout fibers gave paradoxical results inasmuch as creatine decreased the apparent  $K_{M ADP}$  [21,23], although there seemed to be no mitochondrial CK tightly coupled to respiration [22].

The present experiments showed that  $K_{M ADP}$  in trout fibers is higher than in cardiomyocytes. It depends on temperature and is lowered by creatine, but this is not the case for permeabilized cardiomyocytes. This discrepancy suggests that results from trout fibers were affected by incomplete separation of the cells. It is difficult to separate the cells more in trout heart permeabilized fibers, because the tissue is very soft and fragile compared to rat cardiac tissue. We observed that a more thorough dissection led to mechanically damaged fibers with unstable respiration rates and a low ACR.

It has been questioned whether the high apparent  $K_{M ADP}$  in fibers could be caused by unstirred water layers immediately adjacent to the surface of the fibers or cells [42]. From the same line of thought follows whether fibers have a higher  $K_{M ADP}$  than cardiomyocytes, because they tend to cluster and thus have thicker unstirred layers than cardiomyocytes. However, two observations from our data strongly suggest that unstirred layers are not the main cause of diffusion restriction. First, the apparent  $K_{M ADP}$  should increase with temperature, because metabolic rate ( $Q_{10} \sim 2$  [44]) would be more limited by diffusion speed ( $Q_{10} \sim 1.3$  [45]) at higher temperatures. In contrast, we observe a decrease in  $K_{M ADP}$  with temperature in fibers (Fig. 3A) and no effect of temperature in cardiomyocytes (Fig. 3B). Second, stimulation of cytosolic CK with creatine would also have an effect in isolated cardiomyocytes. In contrast, creatine only lowers  $K_{M ADP}$  in fibers (Fig. 3A) and not in cardiomyocytes (Fig. 3B). Thus, neither the higher  $K_{M ADP}$  in cardiomyocytes compared to isolated mitochondria nor the higher  $K_{M ADP}$  in fibers compared to cardiomyocytes can be explained by unstirred layers.

One possible explanation for the higher and temperature-dependent  $K_{M,ADP}$  in fibers could be that perforated sarcolemma is still left to restrict ADP-diffusion between cells. This may become stiffer at colder temperatures and restrict ADP-diffusion more resulting in a higher  $K_{M,ADP}$ . This would also explain why creatine lowers apparent  $K_{M,ADP}$  in fibers but not cardiomyocytes. Diffusion across the barriers formed by the sarcolemma in fibers is facilitated by stimulation of cytosolic CK, whereas this is not the case in permeabilized cardiomyocytes. This hypothesis could be confirmed by experiments using raster image correlation spectroscopy (RICS) to study diffusion restriction. We recently used this method to determine the diffusion of fluorescent ATP in adult rat cardiomyocytes. Diffusion was anisotropic, being 2 times slower in the longitudinal direction and 3.5 times slower in the transverse direction compared to solution [46]. However, this method only gave information on the overall diffusion coefficients in cells versus solution. It needs further development before it can be used to distinguish diffusion coefficients in different cellular compartments and localize the additional diffusion barriers in fibers compared to cardiomyocytes. Although the exact cause of the discrepancy between fibers and cardiomyocytes is not completely resolved, we conclude that trout cardiac fibers, which have been used in previous studies [21-23], do not give reliable information about intracellular diffusion restrictions in trout cardiomyocytes.

#### **ADP diffusion restrictions and role of creatine kinase in rainbow trout cardiomyocytes**

The apparent  $K_{M,ADP}$  of permeabilized trout cardiomyocytes is independent of temperature and not lowered by creatine. The  $K_{M,ADP}$  is  $\sim 80$ - $90 \mu\text{M}$ , and this is about ten times higher than of isolated mitochondria (Tables 4 and 5 and Fig. 3). Thus, diffusion of ADP from the medium to the ANT in the inner mitochondrial membrane is restricted. The present study does not give any precise information as to the cause and localization of diffusion restrictions. The magnitude of diffusion restriction in terms of  $K_{M,ADP}$  is about three times smaller in trout than in rat cardiomyocytes. Thus, t-tubules and SR may still restrict diffusion in rat cardiomyocytes. From the present experiments, we can only conclude that they are not the only cause of diffusion restriction.

Our results suggest that trout heart lacks a mitochondrial CK, because creatine does not lower the apparent  $K_{M,ADP}$  (Table 4 and Fig. 3). This is in agreement with a previous study [22]. Additionally, the positive charge of mitochondrial CK in rat heart seems to be a prerequisite for binding to the inner mitochondrial membrane [9], but preliminary experiments with isoelectric focusing suggest that trout heart does not express a positively charged CK isoform (R. Birkedal, unpublished observation). Further

experiments will be required to determine whether trout heart expresses a mitochondrial CK. However, the expression of mitochondrial CK does not always correlate with functional coupling to respiration [47]. In tissues such as rat ventricle and oxidative skeletal muscle, where mitochondrial CK (Mi-CK) is tightly coupled to respiration [48], diffusion restriction by the outer mitochondrial membrane will enhance this coupling [49]. Indeed, mathematical modeling of data from rat heart suggests a moderate restriction of diffusion by the outer mitochondrial membrane and a stronger restriction of diffusion in the cytosol, probably formed by SR together with crowding of cytoplasmic proteins [50]. However, diffusion restriction by the outer mitochondrial membrane seems unfavorable in tissues that lack a tight coupling of mitochondrial CK to respiration. This is the case for adult rat atrium, which expresses Mi-CK [47,48], neonatal rat and rabbit ventricle, which do not express Mi-CK [40], and according to the present results also trout ventricle. More experiments and development of a mathematical model for trout cardiomyocytes are needed to quantify diffusion restriction by the outer mitochondrial membrane and cytosolic factors, but the present results argue against diffusion restriction by the outer mitochondrial membrane in trout cardiomyocytes.

#### **Rainbow trout as a model animal to study diffusion restrictions in low-performance hearts**

The magnitude of diffusion restriction and the importance of CK in cardiomyocytes seem to relate to metabolism and cardiac mechanical performance. Recent studies have addressed diffusion restriction and metabolic regulation in beating and non-beating HL-1 cardiomyocytes in culture derived from AT-1 mouse atrial tumor cells [51]. Both express cardiac isoforms of connexin, desmin and several ion channels [52,53], but their morphology is vastly different. The cells are flattened out against the two-dimensional surface on which they are grown. Mitochondria form a reticular network, which seems to have some relation to the sarcomeres found in beating cells [52,54]. In non-beating cells, sarcomeres are absent [53]. Their metabolic phenotype is glycolytic [55], and the apparent  $K_{M,ADP}$  is low ( $\sim 50$  and  $25 \mu\text{M}$  for beating and non-beating cells, respectively) [54]. Indeed, the characteristics of cultured cardiomyocytes are affected by contractile activity and mechanical load [56], and it seems that for studies of intracellular diffusion restrictions, they cannot yet replace cardiomyocytes that are freshly isolated from working hearts.

Rainbow trout cardiomyocytes seem to have a phenotype that is intermediate between cultured cardiomyocytes and adult mammalian ventricular myocytes. Interestingly, they have these characteristics in common with cardiomyocytes from other low-performance hearts, e.g. neonatal

rats and rabbits. Their apparent  $K_{M,ADP}$  is close to 100  $\mu\text{M}$  and they lack Mi-CK coupled to respiration [40,41]. Compared to adult mammalian cardiomyocytes, they show greater hypoxia tolerance [57] and rely more on glycolytic energy production [40,58], but less so than the cultured cells. In addition, trout and neonatal rabbit cardiomyocytes have similar morphology (compare Fig. 1 with [59,60]) and possibly also excitation-contraction coupling [61,62]. Thus, it seems that cardiomyocytes from low-performance hearts are very similar independent of species. It is likely that knowledge about the role of diffusion restrictions and CK in trout cardiomyocytes can be extrapolated to other low-performance hearts.

## Conclusions

A new solution was developed for permeabilized trout cardiomyocytes. The results suggest that previous data from permeabilized trout heart fibers were affected by incomplete separation of the cells. This seems to be specific for trout cardiac fibers. The higher apparent  $K_{M,ADP}$  in fibers could be due to remains of sarcolemma between cells in a fiber bundle. However, even in permeabilized trout cardiomyocytes, which have a very small diameter and low density of intracellular membrane structures, diffusion of ADP from the surrounding medium to the ANT in the inner mitochondrial membrane is restricted. Our results exclude the hypothesis that the main cause of this restriction is unstirred layers. Trout cardiomyocytes do not have a mitochondrial CK coupled to respiration. This argues against diffusion restriction by the outer mitochondrial membrane. Whereas it may be important in rat cardiomyocytes, it is more likely that the diffusion restrictions in trout cardiomyocytes reside in the cytosol. The characteristics of rainbow trout heart are very similar to those of other low-performance hearts such as neonatal rat and rabbit hearts. Most probably, rainbow trout can be used as a model animal to study further the localization and physiological importance of intracellular diffusion restrictions in low-performance hearts in general.

## List of abbreviations

ACR: acceptor control ratio ( $= V_{\max}/V_0$ ); ADP: adenosine diphosphate; ANT: adenine nucleotide translocase; ATP: adenosine triphosphate; BSA: bovine serum albumin; ICEU: intracellular energetic unit;  $K_{M,ADP}$ : mitochondrial Michaelis-Menten constant for ADP; mtCLIC: mitochondrial chloride intracellular channel; SR: sarcoplasmic reticulum; SERCA: sarco-endoplasmic reticulum  $\text{Ca}^{2+}$ -ATPase;  $V_0$ : basal respiration rate before addition of ADP;  $V_{\max}$ : maximal respiration rate.

## Authors' contributions

NS performed all the experimental work. MV participated in design of the study and revision of the manuscript. RB conceived, designed and coordinated the study, and

drafted the manuscript. All authors have read and approved the manuscript.

## Acknowledgements

We wish to thank Mervi Sepp for writing the software for analysis of oxygenography data, and Martin Laasmaa for writing the software to deconvolve confocal images.

The research was supported by Wellcome Trust Fellowship no. WT081755 MA and the Estonian Science Foundation grant no. ETF8041 (Ph.D. stipend for N. S.).

## References

1. Kuznetsov AV, Tiivel T, Sikk P, Kaambre T, Kay L, Daneshrad Z, et al.: **Striking differences between the kinetics of regulation of respiration by ADP in slow-twitch and fast-twitch muscles in vivo.** *Eur J Biochem* 1996, **241**:909-915.
2. Scheibye-Knudsen M, Quistorff B: **Regulation of mitochondrial respiration by inorganic phosphate; comparing permeabilized muscle fibers and isolated mitochondria prepared from type-1 and type-2 rat skeletal muscle.** *Eur J Appl Physiol* 2009, **105**:279-287.
3. Kay L, Saks VA, Rossi A: **Early alteration of the control of mitochondrial function in myocardial ischemia.** *J Mol Cell Cardiol* 1997, **29**:3399-3411.
4. Kay L, Rossi A, Saks V: **Detection of early ischemic damage by analysis of mitochondrial function in skinned fibers.** *Mol Cell Biochem* 1997, **174**:79-85.
5. Saks VA, Khuchua ZA, Vasilyeva EV, Belikova OY, Kuznetsov AV: **Metabolic compartmentation and substrate channelling in muscle cells. Role of coupled creatine kinases in in vivo regulation of cellular respiration--a synthesis.** *Mol Cell Biochem* 1994, **133-134**:155-192.
6. Appaix F, Kuznetsov A, Usson Y, Kay L, Andrienko T, Olivares J, et al.: **Possible role of cytoskeleton in intracellular arrangement and regulation of mitochondria.** *Experimental Physiology* 2003, **88**:175-190.
7. Saks VA, Veksler VI, Kuznetsov AV, Kay L, Sikk P, Tiivel T, et al.: **Permeabilized cell and skinned fiber techniques in studies of mitochondrial function in vivo.** *Mol Cell Biochem* 1998, **184**:81-100.
8. Saks VA, Kuznetsov AV, Khuchua ZA, Vasilyeva EV, Belikova JO, Kesvatera T, et al.: **Control of cellular respiration in vivo by mitochondrial outer membrane and by creatine kinase. A new speculative hypothesis: possible involvement of mitochondrial-cytoskeleton interactions.** *J Mol Cell Cardiol* 1995, **27**:625-645.
9. Wallimann T, Wyss M, Brdiczka D, Nicolay K, Eppenberger HM: **Intracellular compartmentation, structure and function of creatine kinase isoenzymes in tissues with high and fluctuating energy demands: the 'phosphocreatine circuit' for cellular energy homeostasis.** *Biochem J* 1992, **281(Pt 1)**:21-40.
10. Seppet EK, Kaambre T, Sikk P, Tiivel T, Vija H, Tonkonogi M, et al.: **Functional complexes of mitochondria with Ca, MgATPases of myofibrils and sarcoplasmic reticulum in muscle cells.** *Biochim Biophys Acta* 2001, **1504**:379-395.
11. Kaasik A, Veksler V, Boehm E, Novotova M, Minajeva A, Ventura-Clapier R: **Energetic crosstalk between organelles: architectural integration of energy production and utilization.** *Circ Res* 2001, **89**:153-159.
12. Saks VA, Kaambre T, Sikk P, Eimre M, Orlova E, Paju K, et al.: **Intracellular energetic units in red muscle cells.** *Biochem J* 2001, **356**:643-657.
13. Saks V, Kuznetsov A, Andrienko T, Usson Y, Appaix F, Guerrero K, et al.: **Heterogeneity of ADP Diffusion and Regulation of Respiration in Cardiac Cells.** *Biophys J* 2003, **84**:3436-3456.
14. Vendelin M, Eimre M, Seppet E, Peet N, Andrienko T, Lemba M, et al.: **Intracellular diffusion of adenosine phosphates is locally restricted in cardiac muscle.** *Mol Cell Biochem* 2004, **256-257**:229-241.
15. Monge C, Beraud N, Kuznetsov AV, Rostovtseva T, Sackett D, Schlatterner U, et al.: **Regulation of respiration in brain mitochondria and synaptosomes: restrictions of ADP diffusion in situ, roles**

- of tubulin, and mitochondrial creatine kinase. *Mol Cell Biochem* 2008, **318**:147-165.
16. Rostovtseva TK, Sheldon KL, Hassanzadeh E, Monge C, Saks V, Bezrukov SM, et al: **Tubulin binding blocks mitochondrial voltage-dependent anion channel and regulates respiration.** *Proc Natl Acad Sci USA* 2008, **105**:18746-18751.
  17. Hove-Madsen L, Tort L: **L-type Ca<sup>2+</sup> current and excitation-contraction coupling in single atrial myocytes from rainbow trout.** *Am J Physiol* 1998, **275**:R2061-R2069.
  18. Vornanen M: **L-type Ca<sup>2+</sup> current in fish cardiac myocytes: effects of thermal acclimation and beta-adrenergic stimulation.** *J Exp Biol* 1998, **201**:533-547.
  19. Santer RM: **The organization of the sarcoplasmic reticulum in teleost ventricular myocardial cells.** *Cell Tissue Res* 1974, **151**:395-402.
  20. Birkedal R, Shiels HA, Vendelin M: **Three-dimensional mitochondrial arrangement in ventricular myocytes: from chaos to order.** *Am J Physiol Cell Physiol* 2006, **291**:C1148-C1158.
  21. Birkedal R, Gesser H: **Regulation of mitochondrial energy production in cardiac cells of rainbow trout (*Oncorhynchus mykiss*).** *J Comp Physiol [B]* 2004, **174**:255-262.
  22. Birkedal R, Gesser H: **Intracellular compartmentation of cardiac fibres from rainbow trout and Atlantic cod--a general design of heart cells.** *Biochim Biophys Acta* 2006, **1757**:764-772.
  23. Birkedal R, Gesser H: **Creatine kinase and mitochondrial respiration in hearts of trout, cod and freshwater turtle.** *J Comp Physiol [B]* 2003, **173**:493-499.
  24. Toleikis A, Majiene D, Trumbeckaite S, Dagys A, Jasaitis A: **The effect of collagenase and temperature on mitochondrial respiratory parameters in saponin-skinned cardiac fibers.** *Biosci Rep* 1996, **16**:513-519.
  25. Bouzidi MF, Enjolras N, Carrier H, Vial C, Lopez-Mediavilla C, Burt-Pichat B, et al: **Variations of muscle mitochondrial creatine kinase activity in mitochondrial diseases.** *Biochim Biophys Acta* 1996, **1316**:61-70.
  26. Veksler VI, Kuznetsov AV, Sharov VG, Kapelko VI, Saks VA: **Mitochondrial respiratory parameters in cardiac tissue: a novel method of assessment by using saponin-skinned fibers.** *Biochim Biophys Acta* 1987, **892**:191-196.
  27. Cannell MB, McMorland A, Soeller C: **Image Enhancement by Deconvolution.** In *Handbook of Biological Confocal Microscopy* Edited by: Pawley JB. New York: Springer; 2006:488-500.
  28. Segretain D, Rambourg A, Clermont Y: **Three dimensional arrangement of mitochondria and endoplasmic reticulum in the heart muscle fiber of the rat.** *Anat Rec* 1981, **200**:139-151.
  29. **MiPNet Protocols 2.3.C - Selected Media and Chemicals for Respirometry with Mitochondria and Permeabilized Cells** [[http://www.oroboros.at/fileadmin/user\\_upload/OROBOROS\\_Handbook/2.3.C-Chemicals-Media.pdf](http://www.oroboros.at/fileadmin/user_upload/OROBOROS_Handbook/2.3.C-Chemicals-Media.pdf)]
  30. **MiPNet Protocols 2.3.A - Mitochondrial Respiration Medium - MiR05** [[http://www.oroboros.at/fileadmin/user\\_upload/OROBOROS\\_Handbook/2.3.A-Medium-MiR06.pdf](http://www.oroboros.at/fileadmin/user_upload/OROBOROS_Handbook/2.3.A-Medium-MiR06.pdf)]
  31. Gow IF, Ellis D: **Effect of lithium on the intracellular potassium concentration in sheep heart Purkinje fibres.** *Exp Physiol* 1990, **75**:427-430.
  32. Walker JL, Ladle RO: **Frog heart intracellular potassium activities measured with potassium microelectrodes.** *Am J Physiol* 1973, **225**:263-267.
  33. Dick DA, McLaughlin SG: **The activities and concentrations of sodium and potassium in toad oocytes.** *J Physiol* 1969, **205**:61-78.
  34. Arnould T, Mercy L, Houbion A, Vankoningsloo S, Renard P, Pascal T, et al: **mtCLIC is up-regulated and maintains a mitochondrial membrane potential in mtDNA-depleted L929 cells.** *FASEB J* 2003, **17**:2145-2147.
  35. Piwnica-Worms D, Jacob R, Horres CR, Lieberman M: **Transmembrane chloride flux in tissue-cultured chick heart cells.** *J Gen Physiol* 1983, **81**:731-748.
  36. Ladle RO, Walker JL: **Intracellular chloride activity in frog heart.** *J Physiol* 1975, **251**:549-559.
  37. Kuznetsov AV, Khuchua ZA, Vassil'eva EV, Medved'eva NV, Saks VA: **Heart mitochondrial creatine kinase revisited: the outer mitochondrial membrane is not important for coupling of phosphocreatine production to oxidative phosphorylation.** *Arch Biochem Biophys* 1989, **268**:176-190.
  38. Buechter DD, Medzihradzky KF, Burlingame AL, Kenyon GL: **The active site of creatine kinase. Affinity labeling of cysteine 282 with N-(2,3-epoxypropyl)-N-amidinoglycine.** *J Biol Chem* 1992, **267**:2173-2178.
  39. Guderley H, St Pierre J: **Seasonal cycles of mitochondrial ADP sensitivity and oxidative capacities in trout oxidative muscle.** *J Comp Physiol [B]* 1999, **169**:474-480.
  40. Hoerter JA, Ventura-Clapier R, Kuznetsov A: **Compartmentation of creatine kinases during perinatal development of mammalian heart.** *Mol Cell Biochem* 1994, **133-134**:277-286.
  41. Tiivel T, Kadaya L, Kuznetsov A, Kaambre T, Peet N, Sikk P, et al: **Developmental changes in regulation of mitochondrial respiration by ADP and creatine in rat heart in vivo.** *Mol Cell Biochem* 2000, **208**:119-128.
  42. Kongas O, Yuen TL, Wagner MJ, van Beek JH, Krab K: **High K(m) of oxidative phosphorylation for ADP in skinned muscle fibers: where does it stem from?** *Am J Physiol Cell Physiol* 2002, **283**:C743-C751.
  43. Seppet EK, Eimre M, Andrienko T, Kaambre T, Sikk P, Kuznetsov AV, et al: **Studies of mitochondrial respiration in muscle cells in situ: use and misuse of experimental evidence in mathematical modelling.** *Mol Cell Biochem* 2004, **256-257**:219-227.
  44. Hill RW, Wyse GA: *Animal Physiology* 2nd edition. New York: HarperCollinsPublishers Inc; 1989.
  45. Hubley MJ, Locke BR, Moerland TS: **Reaction-diffusion analysis of the effects of temperature on high-energy phosphate dynamics in goldfish skeletal muscle.** *J Exp Biol* 1997, **200(Pt 6)**:975-988.
  46. Vendelin M, Birkedal R: **Anisotropic diffusion of fluorescently labeled ATP in rat cardiomyocytes determined by raster image correlation spectroscopy.** *Am J Physiol Cell Physiol* 2008, **295**:C1302-C1315.
  47. Anflous K, Veksler V, Mateo P, Samson F, Saks V, Ventura-Clapier R: **Mitochondrial creatine kinase isoform expression does not correlate with its mode of action.** *Biochem J* 1997, **322(Pt 1)**:73-78.
  48. Ventura-Clapier R, Kuznetsov A, Veksler V, Boehm E, Anflous K: **Functional coupling of creatine kinases in muscles: species and tissue specificity.** *Mol Cell Biochem* 1998, **184**:231-247.
  49. Vendelin M, Lemba M, Saks VA: **Analysis of functional coupling: mitochondrial creatine kinase and adenine nucleotide translocase.** *Biophys J* 2004, **87**:696-713.
  50. Ramay HR, Vendelin M: **Diffusion restrictions surrounding mitochondria: A mathematical model of heart muscle fibers.** *Biophys J* 2009, **97**:443-52.
  51. Claycomb WC, Lanson NA Jr, Stallworth BS, Egeland DB, Delcarpio JB, Bahinski A, et al: **HL-1 cells: a cardiac muscle cell line that contracts and retains phenotypic characteristics of the adult cardiomyocyte.** *Proc Natl Acad Sci USA* 1998, **95**:2979-2984.
  52. White SM, Constantin PE, Claycomb WC: **Cardiac physiology at the cellular level: use of cultured HL-1 cardiomyocytes for studies of cardiac muscle cell structure and function.** *Am J Physiol Heart Circ Physiol* 2004, **286**:H823-H829.
  53. Pelloux S, Robillard J, Ferrera R, Bilbaut A, Ojeda C, Saks V, et al: **Non-beating HL-1 cells for confocal microscopy: application to mitochondrial functions during cardiac preconditioning.** *Prog Biophys Mol Biol* 2006, **90**:270-298.
  54. Anmann T, Guzun R, Beraud N, Pelloux S, Kuznetsov AV, Kogerman L, et al: **Different kinetics of the regulation of respiration in permeabilized cardiomyocytes and in HL-1 cardiac cells. Importance of cell structure/organization for respiration regulation.** *Biochim Biophys Acta* 2006, **1757**:1597-1606.
  55. Eimre M, Paju K, Pelloux S, Beraud N, Roosimaa M, Kadaja L, et al: **Distinct organization of energy metabolism in HL-1 cardiac cell line and cardiomyocytes.** *Biochim Biophys Acta* 2008, **1777**:514-524.
  56. Mitcheson JS, Hancox JC, Levi AJ: **Cultured adult cardiac myocytes: future applications, culture methods, morphological and electrophysiological properties.** *Cardiovasc Res* 1998, **39**:280-300.
  57. Singer D: **Neonatal tolerance to hypoxia: a comparative-physiological approach.** *Comp Biochem Physiol A Mol Integr Physiol* 1999, **123**:221-234.
  58. Christensen M, Hartmund T, Gesser H: **Creatine kinase, energy-rich phosphates and energy metabolism in heart muscle of different vertebrates.** *J Comp Physiol [B]* 1994, **164**:118-123.

59. Sedarat F, Xu L, Moore ED, Tibbits GF: **Colocalization of dihydropyridine and ryanodine receptors in neonate rabbit heart using confocal microscopy.** *Am J Physiol Heart Circ Physiol* 2000, **279**:H202-H209.
60. Dan P, Lin E, Huang J, Biln P, Tibbits GF: **Three-dimensional distribution of cardiac Na<sup>+</sup>-Ca<sup>2+</sup> exchanger and ryanodine receptor during development.** *Biophys J* 2007, **93**:2504-2518.
61. Birkedal R, Shiels HA: **High [Na<sup>+</sup>]<sub>i</sub> in cardiomyocytes from rainbow trout.** *Am J Physiol Regul Integr Comp Physiol* 2007, **293**:R861-R866.
62. Huang J, Hove-Madsen L, Tibbits GF: **Ontogeny of Ca<sup>2+</sup>-induced Ca<sup>2+</sup> release in rabbit ventricular myocytes.** *Am J Physiol Cell Physiol* 2008, **294**:C516-C525.

Publish with **BioMed Central** and every scientist can read your work free of charge

*"BioMed Central will be the most significant development for disseminating the results of biomedical research in our lifetime."*

Sir Paul Nurse, Cancer Research UK

Your research papers will be:

- available free of charge to the entire biomedical community
- peer reviewed and published immediately upon acceptance
- cited in PubMed and archived on PubMed Central
- yours — you keep the copyright

Submit your manuscript here:  
[http://www.biomedcentral.com/info/publishing\\_adv.asp](http://www.biomedcentral.com/info/publishing_adv.asp)

