

Software

Open Access

## Lightweight genome viewer: portable software for browsing genomics data in its chromosomal context

Jeremiah J Faith<sup>1</sup>, Andrew J Olson<sup>2</sup>, Timothy S Gardner<sup>3</sup> and Ravi Sachidanandam<sup>\*2</sup>

Address: <sup>1</sup>Bioinformatics Program, Boston University, USA, <sup>2</sup>Cold Spring Harbor Laboratory, USA and <sup>3</sup>Department of Biomedical Engineering, Boston University, USA

Email: Jeremiah J Faith - faith@bu.edu; Andrew J Olson - olson@cshl.edu; Timothy S Gardner - tgardner@bu.edu; Ravi Sachidanandam\* - sachidan@cshl.edu

\* Corresponding author

Published: 18 September 2007

Received: 30 April 2007

BMC Bioinformatics 2007, 8:344 doi:10.1186/1471-2105-8-344

Accepted: 18 September 2007

This article is available from: <http://www.biomedcentral.com/1471-2105/8/344>

© 2007 Faith et al; licensee BioMed Central Ltd.

This is an Open Access article distributed under the terms of the Creative Commons Attribution License (<http://creativecommons.org/licenses/by/2.0>), which permits unrestricted use, distribution, and reproduction in any medium, provided the original work is properly cited.

### Abstract

**Background:** Lightweight genome viewer (lwgv) is a web-based tool for visualization of sequence annotations in their chromosomal context. It performs most of the functions of larger genome browsers, while relying on standard flat-file formats and bypassing the database needs of most visualization tools. Visualization as an aide to discovery requires display of novel data in conjunction with static annotations in their chromosomal context. With database-based systems, displaying dynamic results requires temporary tables that need to be tracked for removal.

**Results:** lwgv simplifies the visualization of user-generated results on a local computer. The dynamic results of these analyses are written to transient files, which can import static content from a more permanent file. lwgv is currently used in many different applications, from whole genome browsers to single-gene RNAi design visualization, demonstrating its applicability in a large variety of contexts and scales.

**Conclusion:** lwgv provides a lightweight alternative to large genome browsers for visualizing biological annotations and dynamic analyses in their chromosomal context. It is particularly suited for applications ranging from short sequences to medium-sized genomes when the creation and maintenance of a large software and database infrastructure is not necessary or desired.

### Background

Genome browsers are the primary tools for the visualization of raw genomic sequence data and annotations. Typically, these software systems are web-based and present an image with "tracks" of information that describe the underlying genome sequence. The tracks include features such as SNPs, ESTs, linkage-disequilibrium, and splice variants. Navigation through these annotations is done by

zooming and scrolling along the track and the underlying sequence information.

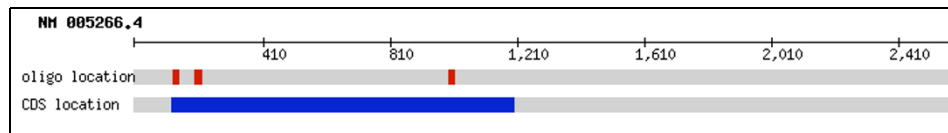
Initially, most organisms with complete genomes had their own custom-built genome browser software [1-3]. More recently, there has been a push towards feature-rich species-generic genome browsers that can be reused for new genomes. The result is a small number of high quality genome browsers that are used across many species [3-7].

All of these browsers use a large set of annotations, which are input into a relational database. A collection of scripts then read the information for the genome region a user wants to view and presents the annotations corresponding to that region.

The large software systems used by genome browsers often require specialized knowledge for installation and maintenance. The requirement of a relational database complicates the genome browsers' applicability in dynamic contexts that change frequently. In addition, running a full-fledged genome browser on a personal computer is not trivial.

Here we present *lightweight genome viewer* (lwgv), a genomic sequence annotation visualizer that requires only a single text file and executable to run. This simplicity

and independence from a database backend facilitates the dynamic creation of genome views based on user-chosen analyses. lwgv allows "include" files, which provide an object-oriented, plug-n-play, architecture for managing tracks and building text files for more complex viewer applications. We have successfully used lwgv to visualize RNAi oligos on their corresponding genes [8], to present a linkage disequilibrium map of chromosome 19 [9], and to display feature annotations for the GeneSeer [10]. We also present a new application of lwgv to dynamically visualize changes in gene expression along a genome using any combination of the over 500 prokaryotic microarrays available in the *Many Microbe Microarrays Database* (M<sup>3D</sup>). lwgv is an ideal tool for the presentation of dynamic analyses and sequence annotations without resorting to the creation and maintenance of a large database and software infrastructure.

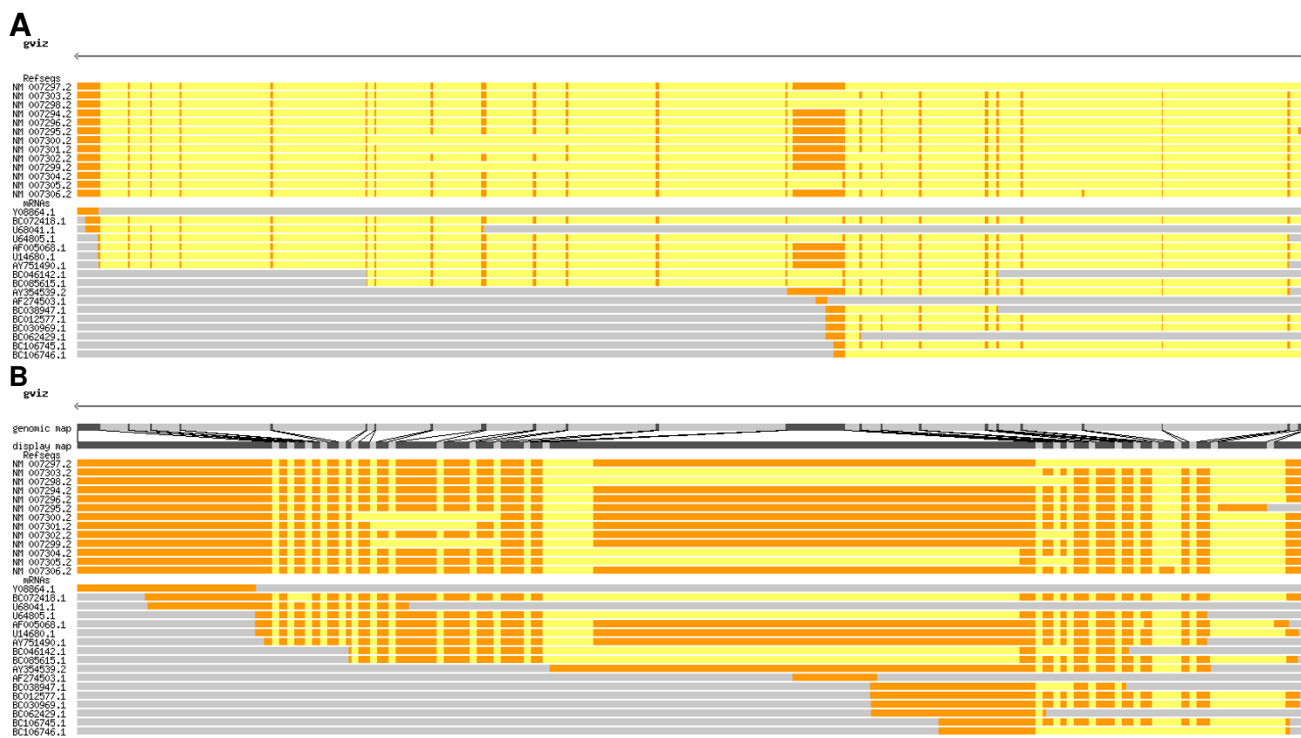


highlighted regions correspond to features in track: **oligo\_location**

```
GCAAAAAGCG TGGGCAGTTG GAGAAGAAGC AGCCAGAGTG TGAAGAAGCC CACGGAAGGA AAGTCCAGGG AGGAGGAAAA
GAAGCAGAAG TTTTGGCATC TGTTCCCTGG CTGTGCCAAG ATGGGCATT GGAGCTTCTT GGGAAATTC CTGGAGGAAG
TACACAAGCA CTCGACCGTG GTAGGCAAGG TCTGGCTCAC TGCTCTCTTC ATATTCCGTA TGCTCGTGTCT GGGCAGAGCT
GCTGAGTCTT CCTGGGGGGA TGAGCAGGCT GATTTCCGGT GTGATACGAT TCAGCCTGGC TGCCAGAATG TCTGTACGA
CCAGGCTTTC CCCATCTCCC ACATTCGCTA CTGGGTGCTG CAGATCATCT TCGTCTCCAC GCCCTCTCTG GTGTACATGG
GCCACGCCAT GCACACTGTG CGCATGCAGG AGAAGCGCAA GCTACGGGAG GCCGAGAGGG CCAAAGAGGT CCGGGGCTCT
GGCTCTTACG AGTACCCGGT GGCAGAGAAG GCAGAACTGT CCTGCTGGGA GGAAGGGAAT GGAAGGATTG CCCTCCAGGG
CACTCTGCTC AACACCTATG TGTGCAGCAT CCTGATCCGC ACCACCATGG AGGTGGGCTT CATTTGTGGC CAGTACTTCA
TCTACGGAAT CTCTCTGACC ACCCTGCATG TCTGCCGAG GAGTCCCTGT CCCCACCCGG TCAACTGTTA CGTATCCCGG
CCCACAGAGA AGAATGTCTT CATTGTCTTT ATGCTGGCTG TGGCTGCATG GTCCCTCTCT CTTAGCCTGG CTGAACTCTA
CCACCTGGGC TGAAGAAGA TCAGACAGCG ATTTGTCAA CCGCGGCAGC ACATGGCTAA GTGCCAGCTT TCTGGCCCTT
CTGTGGGCAT AGTCCAGAGC TGCACACCAC CCCCAGACT TAATCAGTGC CTGGAGAATG GCCCTGGGGG AAAATTCCTT
AATCCCTTCA GCAATAATAT GGCCTCCCAA CAAAACACAG ACAACCTGGT CACCGAGCAA GTACGAGGT AGGAGCAGAC
TCCTGGGGAA GGTTCATCC AGGTTCTGTTA TGGCCAGAAG CCTGAGGTGC CCAATGGAGT CTCACCAGGT CACCGCTTC
CCCATGCTCA TCATAGTGAC AAGCGAGCTC TTAGTAAGGC CAGCAGCAAG GCAAGGTGAG ATGACCTATC AGTGTGACCC
TCCCTTATGG GAGGATCAGG ACCAGGTGGG AACAAAGGAG GCTCAGAGAA GAAAGACGTG TCCCTTCTGA ACTGATGCTT
TCTCACTGTC ATCACTGCTT GGCTCCTTTG AGCCCGGGT CTCAATGACG TTGCTCATT AATTCTAGAA CTATAACCAG
GGCTCTGGGA TAGTAAGAGA GGTGACAACC CACCCAGACT GCAGTTCCTT CCCCACCTC TACCCAGTAT ACGAAGCCTT
TCAGATTACT CATGAAACAG GGTAGAGGGA AAGAAGGAA GCATGGCAAA AGCTGGCCTG GAAGGGATAG CCAGAGGAT
AGAATGACTC TCTCTTACA TACCAGCAGC ATACCAATG CGTTCTCTAA GTTCTCTACT CTTGACCTG ATCACCCTCC
CTCCTCCAAG GAAGAGCTCA AAGTTCCCAG CCAATAGACA GCATGAATCA AGGAACTTGC ATTATATGTG CTCTTGAATC
TGTTGTCTCC ATGGACCATT CCTCGGAGTA GTGGTGAGAT GGCCTTGGT TGCCCTTGGC TTCTCTCTCC TCTACTCAGC
CTTAAAAGG GCTTCTTGA ACTTTACCAG CAGCCTCAGC TTTACAAATG CCTTGGTATG TACCTCTGGC AAATGCCCCA
CCTTGGTGAT GTTGAACCTT TTCCTTCTGC TAGGGTGATC ACCTAGCCTG TGCAGGTGTC AGCCCTGCTA GGGAGTCACT
GTACACACAA ACTCTACTGG AATTCCCTGCC AACATCTGTC ACCCTGCAGC TCCTTTACAG TTCAATCCAA TGATAGAAAC
CATCCCTTCC CTCTCTCTCC TGGCTGTCCA CCCAGCCATT CCTTGAAGGC CTTACCAACA GGAATATCCA AGAAGCTGTT
GTCCCTTCTC GAACCTGAC CAGATCATCA GCCACTGAGG CCAGTGGAA TTTCCCGAGC CTTGTTAAA CAAGAAAGC
ATTGTACCTC TCAGATTTCC CTTGTGGAAA AAAAAATTCT GCTGTGAAGA TGAATAAAA AATGGAGAGA AAACACTGGA
AAACTATTTT CCCTCCTTAT TTAATTCCTT TGCTGACTGC CAACTTAGTG CCAAGAGGAG GTGTGATGAC AGCTATGGAG
GCCCCAGAT CTCTCTCTCC TGGAGGCTTT AGCAGGGGCA AGGAAATFAGT AGGGGAATCT CCAGCTCTCT TGGCAGGGCC
TTTATTTAAA GAGCGCAGG ATTCCTATGT CTCCCTAGTG CCCCTAATGA GACTGCCAAG TGGGGGCTGT AGAAAAGCCT
TGCCTTCCCC AGGGATTGGC CTGGTCTCTG TATTCAGTGG ATCCATAATG GGTGTCTGTT GTTTTGGATG AAGGTAAAGC
ATGCTTGGAA TTGG
```

Figure 1

A screenshot of the results from a siRNA design visualization demonstrates how lwgv represents sequence features on tracks. In this case, the features of interest are the coding sequence (CDS) of the gene being used for RNAi and the location of the designed oligos on that CDS. lwgv also allows the sequence itself to be displayed and colored according to the information in the track.



**Figure 2**  
 Example of the trackCorrelate function to help visualize splice variants. RefSeq and other mRNAs from the human gene BRCA1 are shown aligned to the genome (a) and after compressing introns (b). After compression, it is much easier to see the different isoforms and, for example, discover that mRNAs BC072418.1 and AF005068.1 are not represented among the RefSeqs.

**Implementation**

lwgv runs as a web-based CGI program. Genome features are represented as color-coded tracks on a web browser, and detailed information about each feature can be shown by "mousing-over" them (Figure 1). These features are described in a text-file written in a simple descriptive language. In addition, we offer translators that accept standard annotation formats including BED, WIG, PSL, GFF, and GenBank. Each track, or feature within a track, can have its own unique color, and features across tracks can have lines connecting them to show, for example, the boundaries of homologous sequences across two species or to compare alternative splice sites (Figure 2). In addition to tracks, the sequence viewer can represent numerical information along a genome using line plots, smooth line plots (using cubic splines), or histograms. Basic properties like image width, track height, and navigation buttons are all configurable. Commonly used feature sets and configuration parameters can be stored in separate files and included into an annotation file with an "#include" statement to prevent regenerating the same features in contexts where only part of the analysis data is dynamic.

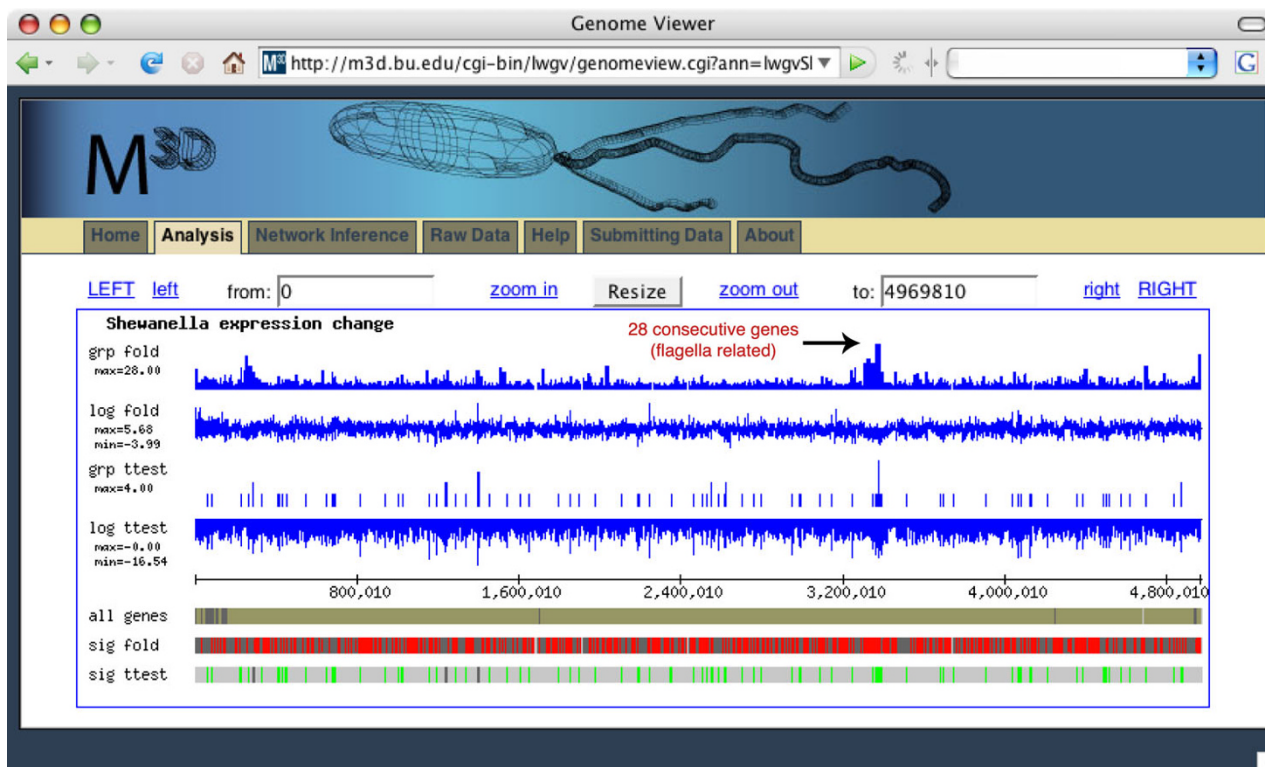
**Results and discussion**

**lwgv as a traditional genome browser**

Although lwgv is not as feature rich as database-driven genome browsers, it is sufficiently fast to be used in place of a genome browser in many contexts where the number of tracks and features is not too large (e.g. less than 10 tracks with less than 10000 features each). For example, lwgv was used to display a linkage disequilibrium map of human chromosome 19 [9,11]. lwgv is a good replacement for traditional genome browsers when quick setup is needed and the visualization demands require only simple tracks and graphs. Larger software packages, such as the UCSC Genome Browser [12], should be used when more advanced browsing features are needed (e.g. expandable tracks, the ability to dynamically add/remove tracks, and the ability to navigate large genomes by clicking on regions of a chromosome image).

**lwgv as a short sequence viewer**

Most software applications for visualizing short DNA sequences are standalone-applications that are only available commercially or are devoted to a specific task such as restriction enzyme digestion [13]. lwgv is well suited for



**Figure 3**

lwgv is used with the *Many Microbe Microarrays Database* to allow users to dynamically display expression changes in their chromosomal context. In this example, significant expression changes between *E. coli* cells grown in rich media and *E. coli* cells grown in rich media with norfloxacin antibiotic are shown with lwgv. In this chromosomal context, it is immediately clear that several large regions of the genome have significantly changed expression levels between these two conditions. For example, over 28 consecutive genes and intergenic regions related to flagella have a significant fold change (track *grp fold*). These significantly changed genes are displayed on track *sig fold*.

visualizing annotations of short stretches of DNA. For example, we use lwgv to show the location of the RNAi knockdown clones from the Hannon-Elledge shRNA libraries [8,14]. For this task, it is only necessary to show individual genes and the location of each shRNA designed for those genes. With lwgv, this task can be done by reading the available shRNAs for a particular gene from the database of all shRNAs and generating the corresponding annotations such as exon boundaries and shRNA binding sites into a temporary file to be read by lwgv. This dynamic approach allows one to update the shRNA database without having to sync a second database for a genome viewer.

lwgv is particularly well suited to dynamically display a user's analysis of a particular region of DNA. We previously developed a web application where biologists can design their own RNAi oligos [15]. lwgv provides a simple way to show the locations of the RNAi oligo designs on the user's sequence (Figure 1). For traditional genome

browsers, this would require either generating (and subsequently deleting) a new database or table for each user or developing a lot of workaround code to allow the genome browser to operate from a database that has many discontinuous sequences from different species. With lwgv, the user's sequence can be visualized by generating the appropriate temporary file with their sequence and the location of the siRNA oligos on their sequence. These temporary files can be deleted when they are past a pre-determined expiration date.

#### **lwgv as a dynamic microarray analysis tool**

Common microarray analysis procedures yield lists of genes, whose expression changes significantly in response to an environmental or genetic perturbation. The functional role for most of these expression changes is typically unknown, and the often-large number of changed genes hinders human interpretation of their role. In many species, genes with similar functional roles often exhibit chromosomal proximity and therefore operate as a co-

expressed module, even when part of distinct operons and transcription units [16,17]. To facilitate the sharing, discovery, and analysis of expression data in a genome localization context, we created an *lwg* application where users can dynamically choose any two sets of microarray experiments in *M<sup>3D</sup>* and view gene expression changes in their chromosomal context (Figure 3). *M<sup>3D</sup>* includes Affymetrix microarray compendia for multiple microbes including *S. oneidensis*, *E. coli*, and *S. cerevisiae*, and it also provides visualization and data download tools [18,19]. *lwg* is also packaged with a script that allows any expression data in the commonly used GPR format to be visualized in a genome context.

## Conclusion

*lwg* is a lightweight genome browser that can be used in small-scale projects and individual labs. Scientists and laboratories with little computing infrastructure can use *lwg* since it does not require databases or other software.

## Availability and requirements

*lwg* is distributed under the GPL license.

**Project name:** *lwg*

**Project homepage:** <http://lwg.sourceforge.net>

**Operating systems:** linux and mac os x

**Programming languages:** C

**Other requirements:** apache, cgic, gd graphics library, lex (flex), yacc (bison)

**Any restrictions to use by non-academics:** none

*lwg* is distributed as a source code tarball and installs with the standard unix `./configure` and `make` commands. Details about installing *lwg*, writing tracks, and customizing the output can be found in the manual and README files distributed with the software.

## Competing interests

The author(s) declares that there are no competing interests.

## Authors' contributions

JJF and RS developed the initial source code. AO wrote parsers for converting other genome browser annotations into the *lwg* format. All authors contributed bug fixes and minor additions to the software. All authors contributed to writing the manuscript. All authors read and approved the final manuscript.

## Acknowledgements

Manufacturers of America Foundation, the United States Department of Energy Office of Science (BER) grant number DE-FG02-04ER63803, the Whitaker Foundation, and the DART Neurogenomic Alliance at CSHL.

## References

1. Consortium TFB: **FlyBase--the Drosophila database. The Fly-Base Consortium.** *Nucleic Acids Res* 1994, **22(17)**:3456-3458.
2. Stein L, Sternberg P, Durbin R, Thierry-Mieg J, Spieth J: **WormBase: network access to the genome and biology of Caenorhabditis elegans.** *Nucleic Acids Res* 2001, **29(1)**:82-86.
3. Stein LD, Mungall C, Shu S, Caudy M, Mangone M, Day A, Nickerson E, Stajich JE, Harris TW, Arva A, Lewis S: **The generic genome browser: a building block for a model organism system database.** *Genome Res* 2002, **12(10)**:1599-1610.
4. Hinrichs AS, Karolchik D, Baertsch R, Barber GP, Bejerano G, Clawson H, Diekhans M, Furey TS, Harter RA, Hsu F, Hillman-Jackson J, Kuhn RM, Pedersen JS, Pohl A, Raney BJ, Rosenbloom KR, Siepel A, Smith KE, Sugnet CV, Sultan-Qurraie A, Thomas DJ, Trumbower H, Weber RJ, Weirauch M, Zweig AS, Haussler D, Kent WJ: **The UCSC Genome Browser Database: update 2006.** *Nucleic Acids Res* 2006, **34(Database issue)**:D590-8.
5. Hubbard TJ, Aken BL, Beal K, Ballester B, Caccamo M, Chen Y, Clarke L, Coates G, Cunningham F, Cutts T, Down T, Dyer SC, Fitzgerald S, Fernandez-Banet J, Graf S, Haider S, Hammond M, Herrero J, Holland R, Howe K, Howe K, Johnson N, Kahari A, Keefe D, Kokocinski F, Kulesha E, Lawson D, Longden I, Melsopp C, Megy K, Meidl P, Ouerdin B, Parker A, Prlic A, Rice S, Rios D, Schuster M, Sealy I, Severin J, Slater G, Smedley D, Spudich G, Trevanion S, Vilella A, Vogel J, White S, Wood M, Cox T, Curwen V, Durbin R, Fernandez-Suarez XM, Flicek P, Kasprzyk A, Proctor G, Searle S, Smith J, Ureta-Vidal A, Birney E: **Ensembl 2007.** *Nucleic Acids Res* 2007, **35(Database issue)**:D610-7.
6. Karp PD, Ouzounis CA, Moore-Kochlacs C, Goldovsky L, Kaipa P, Ahren D, Tsoka S, Darzentas N, Kunin V, Lopez-Bigas N: **Expansion of the BioCyc collection of pathway/genome databases to 160 genomes.** *Nucleic Acids Res* 2005, **33(19)**:6083-6089.
7. Peterson JD, Umayam LA, Dickinson T, Hickey EK, White O: **The Comprehensive Microbial Resource.** *Nucleic Acids Res* 2001, **29(1)**:123-125.
8. Paddison PJ, Silva JM, Conklin DS, Schlach M, Li M, Aruleba S, Balija V, O'Shaughnessy A, Gnoj L, Scobie K, Chang K, Westbrook T, Cleary M, Sachidanandam R, McCombie WR, Elledge SJ, Hannon GJ: **A resource for large-scale RNA-interference-based screens in mammals.** *Nature* 2004, **428(6981)**:427-431.
9. Phillips MS, Lawrence R, Sachidanandam R, Morris AP, Balding DJ, Donaldson MA, Studebaker JF, Ankeney WM, Alfisi SV, Kuo FS, Camisa AL, Pazorov V, Scott KE, Carey BJ, Faith J, Katari G, Bharti HA, Cyr JM, Derohannessian V, Elosua C, Forman AM, Grecco NM, Hock CR, Kuebler JM, Lathrop JA, Mockler MA, Nachtman EP, Restine SL, Varde SA, Hozza MJ, Gelfand CA, Broxholme J, Abecasis GR, Boyce-Jacino MT, Cardon LR: **Chromosome-wide distribution of haplotype blocks and the role of recombination hot spots.** *Nat Genet* 2003, **33(3)**:382-387.
10. Olson AJ, Tully T, Sachidanandam R: **GeneSeer: a sage for gene names and genomic resources.** *BMC Genomics* 2005, **6**:134.
11. **Chromosome 19 Linkage Map** [<http://katahdin.cshl.org:9331/chr19/>]
12. **UCSC Genome Browser** [<http://hgdownload.cse.ucsc.edu/downloads.html>]

13. Vincze T, Posfai J, Roberts RJ: **NEBcutter: A program to cleave DNA with restriction enzymes.** *Nucleic Acids Res* 2003, **31(13)**:3688-3691.
14. Olson A, Sheth N, Lee JS, Hannon G, Sachidanandam R: **RNAi Codex: a portal/database for short-hairpin RNA (shRNA) gene-silencing constructs.** *Nucleic Acids Res* 2006, **34(Database issue)**:D153-7.
15. **RNAi Central** [<http://katahdin.cshl.org:9331/homepage/siRNA/RNAi.cgi?type=shRNA>]
16. Cohen BA, Mitra RD, Hughes JD, Church GM: **A computational analysis of whole-genome expression data reveals chromosomal domains of gene expression.** *Nat Genet* 2000, **26(2)**:183-186.
17. Spellman PT, Rubin GM: **Evidence for large domains of similarly expressed genes in the Drosophila genome.** *J Biol* 2002, **1(1)**:5.
18. **Many Microbe Microarrays Database** [<http://m3d.bu.edu/>]
19. Faith JJ, Hayete B, Thaden JT, Mogno I, Wierzbowski J, Cottarel G, Kasif S, Collins JJ, Gardner TS: **Large-Scale Mapping and Validation of Escherichia coli Transcriptional Regulation from a Compendium of Expression Profiles.** *PLoS Biol* 2007, **5(1)**:e8.

Publish with **BioMed Central** and every scientist can read your work free of charge

*"BioMed Central will be the most significant development for disseminating the results of biomedical research in our lifetime."*

Sir Paul Nurse, Cancer Research UK

Your research papers will be:

- available free of charge to the entire biomedical community
- peer reviewed and published immediately upon acceptance
- cited in PubMed and archived on PubMed Central
- yours — you keep the copyright

Submit your manuscript here:  
[http://www.biomedcentral.com/info/publishing\\_adv.asp](http://www.biomedcentral.com/info/publishing_adv.asp)

