

Database

Open Access

ProMEX: a mass spectral reference database for proteins and protein phosphorylation sites

Jan Hummel¹, Michaela Niemann¹, Stefanie Wienkoop¹, Waltraud Schulze¹, Dirk Steinhäuser¹, Joachim Selbig², Dirk Walther¹ and Wolfram Weckwerth*^{1,2}

Address: ¹Max Planck Institute of Molecular Plant Physiology, Am Mühlenberg 1, 14424 Potsdam, Germany and ²University of Potsdam, Institute of Biochemistry and Biology, c/o MPI-MP, Am Mühlenberg 1, 14424 Potsdam, Germany

Email: Jan Hummel - hummel@mpimp-golm.mpg.de; Michaela Niemann - niemann@mpimp-golm.mpg.de; Stefanie Wienkoop - wienkoop@mpimp-golm.mpg.de; Waltraud Schulze - schluze@mpimp-golm.mpg.de; Dirk Steinhäuser - steinhauser@mpimp-golm.mpg.de; Joachim Selbig - selbig@mpimp-golm.mpg.de; Dirk Walther - walther@mpimp-golm.mpg.de; Wolfram Weckwerth* - weckwerth@mpimp-golm.mpg.de

* Corresponding author

Published: 23 June 2007

Received: 30 January 2007

BMC Bioinformatics 2007, 8:216 doi:10.1186/1471-2105-8-216

Accepted: 23 June 2007

This article is available from: <http://www.biomedcentral.com/1471-2105/8/216>

© 2007 Hummel et al; licensee BioMed Central Ltd.

This is an Open Access article distributed under the terms of the Creative Commons Attribution License (<http://creativecommons.org/licenses/by/2.0>), which permits unrestricted use, distribution, and reproduction in any medium, provided the original work is properly cited.

Abstract

Background: In the last decade, techniques were established for the large scale genome-wide analysis of proteins, RNA, and metabolites, and database solutions have been developed to manage the generated data sets. The Golm Metabolome Database for metabolite data (GMD) represents one such effort to make these data broadly available and to interconnect the different molecular levels of a biological system [1]. As data interpretation in the light of already existing data becomes increasingly important, these initiatives are an essential part of current and future systems biology.

Results: A mass spectral library consisting of experimentally derived tryptic peptide product ion spectra was generated based on liquid chromatography coupled to ion trap mass spectrometry (LC-IT-MS). Protein samples derived from *Arabidopsis thaliana*, *Chlamydomonas reinhardtii*, *Medicago truncatula*, and *Sinorhizobium meliloti* were analysed. With currently 4,557 manually validated spectra associated with 4,226 unique peptides from 1,367 proteins, the database serves as a continuously growing reference data set and can be used for protein identification and quantification in uncharacterized biological samples. For peptide identification, several algorithms were implemented based on a recently published study for peptide mass fingerprinting [2] and tested for false positive and negative rates. An algorithm which considers intensity distribution for match correlation scores was found to yield best results. For proof of concept, an LC-IT-MS analysis of a tryptic leaf protein digest was converted to mzData format and searched against the mass spectral library. The utility of the mass spectral library was also tested for the identification of phosphorylated tryptic peptides. We included *in vivo* phosphorylation sites of *Arabidopsis thaliana* proteins and the identification performance was found to be improved compared to genome-based search algorithms. Protein identification by ProMEX is linked to other levels of biological organization such as metabolite, pathway, and transcript data. The database is further connected to annotation and classification services via BioMoby.

Conclusion: The ProMEX protein/peptide database represents a mass spectral reference library with the capability of matching unknown samples for protein identification. The database allows text searches based on metadata such as experimental information of the samples, mass spectrometric instrument parameters or unique protein identifier like AGI codes. ProMEX integrates proteomics data with other levels of molecular organization including metabolite, pathway, and transcript information and may thus become a useful resource for plant systems biology studies. The ProMEX mass spectral library is available at <http://promex.mpimp-golm.mpg.de/>.

Background

Large-scale protein analysis is closely linked to mass spectrometric techniques. Peptide fragmentation in an ion trap mass spectrometer (IT-MS) is one of the most used approaches for protein identification in complex samples [3]. One such technique, referred to as "shotgun proteomics", can be exploited for rapid screening and – in combination with further fractionation – comprehensive qualitative protein identification in complex samples [4,5]. Proteins are extracted from tissues and analysed after separation on gel electrophoresis or directly via tryptic digestion. Thousands or tens of thousands of peptide mass spectra are generated in a typical analysis. For high throughput identification, these mass spectra can be matched against theoretical amino acid sequences derived from the annotated or predicted proteome of an organism. However, in many of the available algorithms, only the appearance of specific mass fragments in a CID-MS, but not their intensity distribution is considered specifically, because it can not easily be predicted from the amino acid sequence of peptides alone. Therefore, the approach of establishing a mass spectral reference library as used routinely in metabolic and metabolite profiling by gas chromatography coupled to mass spectrometry appears promising [6-8]. We investigate here the utility of a mass spectral reference library by implementing a database consisting of 4,557 manually validated tryptic peptide product ion spectra of divers plant proteins generated by LC-IT-MS and mass fragment intensity correlation search for protein identification.

Construction and content

Creation of the mass spectral library

A library of 4,557 manually validated peptide/phosphopeptide product ion spectra from approximately 330,000 collision-induced dissociation (CID) fragment spectra analysed in various LC-MS/MS analyses from recent studies was generated [4,5,9-12]. These CID spectra were annotated with Sequest and Mascot using the filter and search criteria as described in these studies [4,5,9-12]. In addition to the filtering, the resulting spectra were further validated manually using the SILVER web application [13].

ProMEX database system

ProMEX was designed as a web-based service in a Linux/Apache environment using Perl-CGI for HTML page generation. A Microsoft SQL Server 2005® was utilised as the relational database backend for storing the library spectra as well as the query spectra uploaded by the user. Algorithms for comparing spectra to identify matching hits were implemented using the Common Language Runtime (CLR) .Net framework using the C# programming language. Library mass spectra as well as user-uploaded query spectra are saved using a User-defined Data Type (UDT) in

the database permitting us to calculate the score values directly within the database by using standard T-SQL to access the spectra. Using indices to select matching library spectra according to a given precursor ion mass and a charge state of a user-submitted product ion spectra and taking advantage of the server's memory management system, we achieved high performance and efficient memory usage.

Because of the server's limitation of the UDT size to 8,000 Bytes, it was necessary to limit the product ion spectra to maximally 1,000 fragment peaks each (1,000 peaks with 4 Byte m/z and 4 Byte *intensity* each). Upon evaluating the intensity distribution (Figure 1), we assessed the dependence of the identification process on the level of noise removal; i.e. peaks with very low intensity. Applying the receiver operating characteristic (ROC) analysis, peptide identification accuracy was observed to be robust with regard to noise filtering and a level of 2% relative peak intensity was chosen as a conservative threshold for noise removal (Figure 2).

As described in [2], the performance of peak-list comparison is influenced by several factors, most importantly by the choice of the distance measurement itself. Here, we found a modified dot product [7] distance measure

$$D(x, y) = 1 - \sum_{i \in A, k \in B} w \left(\left(\frac{m}{z} \right)_i^x, \left(\frac{m}{z} \right)_k^y \right) I_i^x I_k^y$$

to perform best on the mass spectra used in this study where x and y denote the two spectra to be compared,

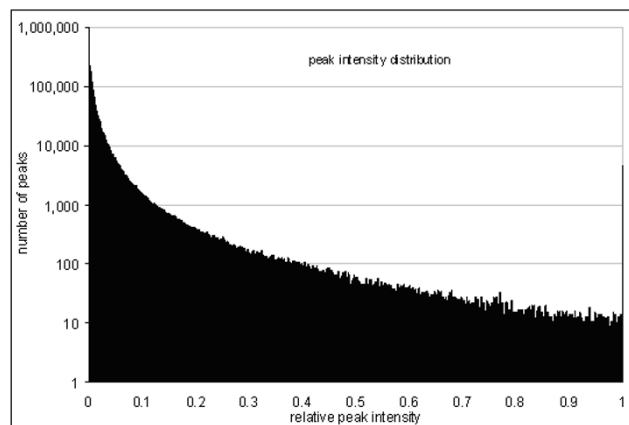


Figure 1
Peak intensity distribution from product ion spectra. 70% of all fragment peaks have a relative intensity less or equal 0.02. The peak on the right hand side originates from the prior scaling of all spectra to a maximum peak intensity of 1.

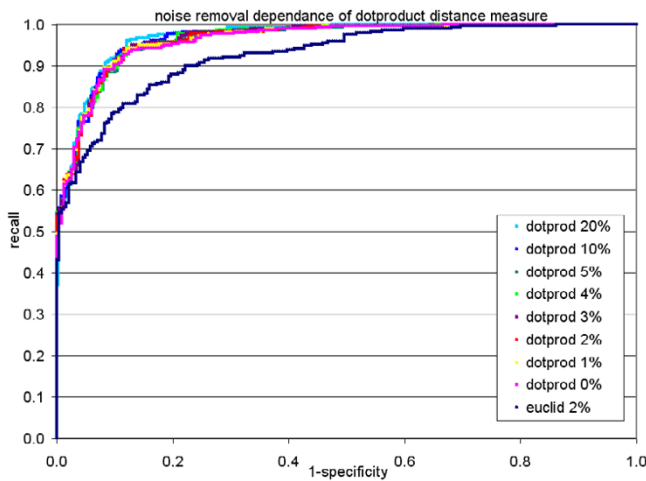


Figure 2
 Assessment of the effect of noise removal on the identification performance illustrated by the receiver operating characteristic (ROC). The identification rate is robust against different levels of peak noise filters up to 10%. We decided to use a conservative noise removal level of 2%. Recall (true positives) reflects the number of correctly identified peptides based on SEQUEST search, whereas 1 specificity corresponds to all ProMEX peptide identifications which did not match to the SEQUEST identifications. As a comparison, results from using the Euclidean distance are also included which proved to be inferior to the dot product.

$\left(\frac{m}{z}\right)_i^x$ are the mass-charge ratios and \hat{I}_i^x are the normalised intensity values of the i -th peak in the spectrum x , likewise for spectrum y and index k . A and B are the total number of peaks in the spectra x and y , respectively. The term

$$w\left(\left(\frac{m}{z}\right)_i^x, \left(\frac{m}{z}\right)_k^y\right) = \begin{cases} 1 - \frac{\left| \left(\frac{m}{z}\right)_i^x - \left(\frac{m}{z}\right)_k^y \right|}{a} & ; \left| \left(\frac{m}{z}\right)_i^x - \left(\frac{m}{z}\right)_k^y \right| \leq a \\ 0 & ; \left| \left(\frac{m}{z}\right)_i^x - \left(\frac{m}{z}\right)_k^y \right| > a \end{cases}$$

is a windowed, linear weighting factor accounting for the match accuracy with regard to mass-charge ratio difference of fragment peaks x_i and y_k where a corresponds to the *fragment ion mass tolerance* specified by the user. The same strategy was applied in a recent mass spectral match algorithm [2]. Because all peaks are normalised to

$$\hat{I} = \frac{I}{\sqrt{\sum_{j=1}^l I_j^2}}$$

where I refers to the raw intensities of a given spectrum with l peaks including only those peaks above the noise threshold discussed above, D is always within the range of $(0, 1)$ with values closer to zero indicating better matches between two spectra. The dot product distance is calculated looping through both MS/MS spectra x and y under comparison sorted in ascending order according to their m/z ratios and using a reference pointing to the next fragment peak for a potential fragment match for each peak list. In case the mass difference between those referenced peaks is less than or equal to the fragment ion mass tolerance a , both referenced peaks are used in Eq. 1 with their respective intensities. Otherwise a zero-intensity peak is "matched" to that referenced peak. In the first case, both peak reference pointers are incremented simultaneously, whereas only the index pointing to the peak with the smaller m/z ratio is incremented in the latter case. We iterate that loop until all peaks are checked off.

To balance flexible process parameterisation and performance of mass spectra identification, we limited the user interface to a subset of parameters (Figure 3):

- *Precursor ion mass tolerance* defines a window for considering two distinct MS/MS spectra coming from the same parent ion;
- *Fragment ion mass tolerance* defines a window for considering two ion peaks from different peak lists as identical;
- *Threshold* defines a threshold value to ignore mass spectra hits above this score value; i.e. spectra are not considered as matching.

ProMEX is able to handle uploads of merged MS/MS text files (dta or mgf) [14] or mzData <http://psidev.sourceforge.net/ms/> standard <http://psidev.sourceforge.net/ms/xml/mzdata/mzdata.xsd>. User-uploaded data are verified and parsed using Perl, and the spectra submitted as queries to the database. Spectra contained in the library are sorted according to their matching score ignoring hits above a given score threshold value. The hit list of identified proteins is further augmented by information contained in the database including peptide annotations, information regarding the biological experiment, instrument settings as well as links to online resources of the National Center for Biotechnology Information (NCBI), the Kyoto Encyclopedia of Genes and Genomes (KEGG), and the Comprehensive Systems-Biology Database (CSB.DB) (Figure 4).

Considering widespread use of the BioMOBY <http://www.biomoby.org/> environment in web-based bioinformatics and as a common framework for biological resources, we implemented a service *getTrypticPeptideSe-*

ProMEX
Protein Mass spectra EXtraction

Max Planck Institute
of Molecular
Plant Physiology

home
ms query
text query
help

FRAGMENT SPECTRA

Please paste in your fragment spectra either in [mzData](#) or [dta](#) format ([Examples](#)).

Or select a local file for upload

query parameters		
threshold	precursor ion mass tolerance	fragment ion mass tolerance
<input type="text" value="0.5"/>	<input type="text" value="2.0"/>	<input type="text" value="400.0"/> <input type="radio"/> absolut <input type="radio"/> ppm
<input type="button" value="submit mass spectra"/>	<input type="button" value="default values"/>	

The search may take a while.

last reviewed at 2007-04-05 by hummel@mpimp-qolm.mpg.de W3C XHTML 1.0 W3C CSS

Figure 3

Screenshot of the ProMEX user interface. Input can be inserted into the textbox or uploaded as file using the file selection dialog.

quenceByAGI that returns a list of experimentally measured tryptic peptides for *Arabidopsis* genes identified by their *Arabidopsis* Genome Initiative (AGI) code.

To obtain maximal performance and limit temporary disk space usage, all uploaded spectra, results, and session information will be deleted within 24 hours after transmission. Using current standard hardware equipment, a typical ProMEX analysis of a 196 MB merged dta file with >30,000 MS/MS spectra is completed within approximately 13 minutes.

Utility and Discussion


Mass spectral library and experimental meta-information

A library containing 4,557 measured peptide MS/MS spectra from 1,367 distinct proteins represented by 4,226 peptides including the corresponding experimental information was created. In case of replicated fragment spectra contained in the database – a small fraction of all spectra, only the best matching spectrum is returned. In addition to existing algorithms which use mass spectral library searches such as GPM X!Hunter http://www.the_gpm.org or SpectraST [6], we attempted to link the identification process to experimental meta-information and quantification. The latter is facilitated by the possibility to

upload complete LC-MS runs in mzData format and to search them against the database. The result of peptide/protein identifications is accompanied by a semiquantitative measure called spectral count giving the possibility to estimate the relative abundance of proteins in the sample [4,15] (see also below). Furthermore, we optimised the database search to allow analyses of large file sizes (up to 200 Mbyte and more, see below) which to our knowledge is not yet implemented in other databases. The peptide spectra presently stored in the database were mainly derived from *Arabidopsis thaliana*, *Medicago truncatula*, *Chlamydomonas reinhardtii* and *Sinorhizobium meliloti*, acquired in 18 experiments through fragmentation with LCQ, LTQ or Orbitrap mass spectrometers [5,9,10,12].

ProMEX mass spectral library search of unknown samples

For the analysis of protein identification efficiency of ProMEX, LC/MS analyses were processed by both ProMEX and SEQUEST <http://fields.scripps.edu/sequest/>. The disadvantage of ProMEX may lie in the use of an inherently incomplete dataset compared to a genomic database. On the other hand, a mass spectral library consisting of experimentally observed and validated spectra as implemented in ProMEX can be expected to provide clear advantages over genome-based prediction of mass spectra [6].



home
ms query
text query
help

ProMEX
Protein Mass spectra EXtraction

Max Planck Institute
of Molecular
Plant Physiology



Details for At1g13440

protein	peptide count	total ion count	library peptide id	sequence	ion count	query spectra id	peptide ranking	score
At1g13440 NCBI CSDB KEGG	4	8	1319_00846	-.FGIVEGLMTTVHSITATQK.-	3	19091	1	0.000
						19263	5	0.378
						19061	6	0.422
			1319_00814	-.VPTVDVSVWDLTVR.-	2	13480	2	0.001
			1319_01120	-.DAPMFVGVGNEHEYK.-	1	13339	4	0.364
			1319_01367	K.GILGYTEDDWSTDFVGDNR.S	2	14036	7	0.428
						14357	8	0.464

properties of peptide library entry 1319_00846

property	value
reference	At1g13440
protein info	68414.m01570 glyceraldehyde 3-phosphate dehydrogenase, cytosolic,
peptide sequence	-.FGIVEGLMTTVHSITATQK.-
XCorr	4.42
fragment tolerance	0.3
ions	23/36
modification	(M* +15.999) (C# +57.022) Enzyme:Trypsin (2)
charge	2
(M+H)+	2033.07
instrument	linear iontrap
experiment description	3

mass spectra identifying peptide 1319_00846

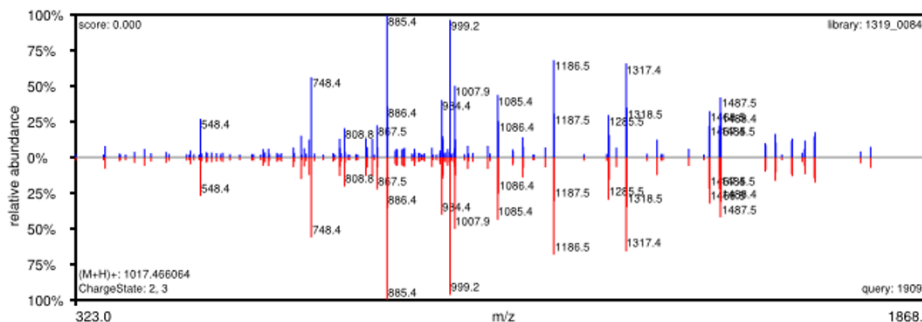


Figure 4

Screenshot of the result page showing four identified peptides associated with the candidate hit protein *At1g13440* which was tagged in the sample by 8 submitted fragment spectra. For visual inspection of the spectra match, a north-south-plot of the library versus query spectra is shown below.

To set a suitable default cutoff threshold for the search algorithm implemented in ProMEX, two different distance measures – the dot product and Euclidean distance – were compared by searching mzData files of LC-MS analyses against the ProMEX mass spectral library. The results were compared to the SEQUEST result file ("true positives"). Figure 2 illustrates the gain of correct predictions by the dot product in comparison to the Euclidean distance. Because of the better performance, the dot product distance was chosen and the default threshold value was set to 0.5. In Figure 5, the resulting peptide identifica-

tion output was examined for the number of false hits against true positive peptide hits (list of peptides identified by SEQUEST) as a function of threshold score for the dot product distance. Using the default threshold, the false peptide detection rate was found to be less than 1%, while the number of false negatives reached a level of 25% in our dataset.

For 86 proteins, the list of protein identifications was identical in both systems. From subsequent searches, it became clear that the specificity for peptide identification

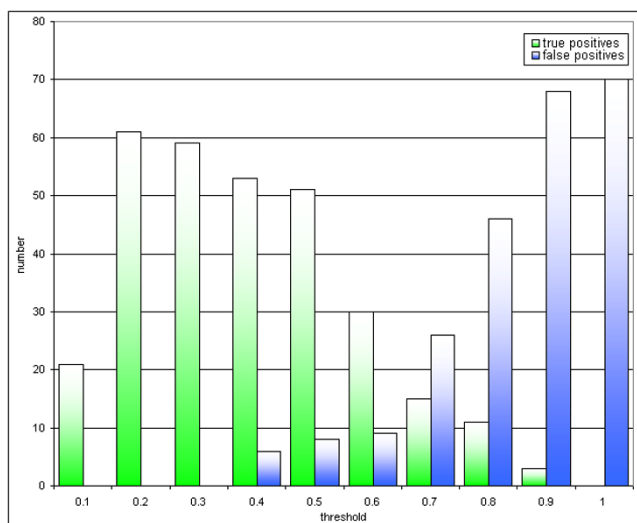


Figure 5
Comparison of peptide identification rate as a function of match score. True positive identifications are all matches found by SEQUEST and ProMEX. False positives are defined as residual peptide identifications by ProMEX which did not match to the SEQUEST hits. The default threshold value for ProMEX was set to 0.5 according to this diagram.

increases with ProMEX because fragment intensity distributions in product ion spectra are taken into account as an additional parameter.

Very importantly, spectra which are not assigned by SEQUEST or MASCOT can easily be included in the ProMEX mass spectral library as unknowns. This allows recognizing these spectra again in new analyses which is not possible by using algorithms based on genome-derived theoretical mass spectra. Another potential advantage of a mass spectral reference database lies in the identification of phosphorylated peptides which usually give very ambiguous results in genome-based database searches [11,16]. For proof of concept, we included CID-MS of synthetic phosphopeptides in the ProMEX reference database which were based on *in vivo* and *in vitro* protein phosphorylation sites detected in *Arabidopsis thaliana* samples [11,17-19]. Subsequently, we were able to identify these phosphopeptides in a set of different plant samples. Several of these peptides were not identified reproducibly with genome-based search algorithms like SEQUEST.

Protein quantification using ProMEX

ProMEX provides a quantitative estimate for the abundance of a protein/peptide in the sample. In case a complete LC/MS run is uploaded in mzData-format the ProMEX result table has an entry for each protein/peptide how often it was identified. This measure is similar to spectral count (SC) [4,15] and has been shown to be a val-

uable parameter for semi-quantitative mass spectrometry analysis.

Identifying bottlenecks and limits

Setting the threshold too high or uploading LC/MS runs with large numbers of mass spectra results in computation times proportional to the number of submitted spectra in parallel to an overwhelming number of matches which is difficult to handle using a web server and HTMLformatted output. It may also appear that implementing such a tool with high computational demands as a web-based service may not be the best choice and client-site applications may be more suitable. On the other hand, this approach requires only a web browser to be accessible for the research community, thereby facilitating access to large amounts of available reference data. Some of the shortcomings could be addressed by utilizing a computer cluster and parallelising the task of scoring or by limiting the allowed file upload size. However, data file sizes will likely increase in the future. Therefore, restricting to file size may not be a viable option. Another option might be to implement a Microsoft Windows binary for a local computer utilization.

The ProMEX library will be extended by the ongoing proteomic analyses. Considering quality assurance reasons, an automated upload facility is not yet intended. However, linking ProMEX to other databases with similar background in plant proteomics research as well as databases such as peptide atlas <http://www.peptideatlas.org/> is an ongoing project and greatly appreciated by the authors. Further, other groups are encouraged to submit their data directly to the ProMEX database curators for inclusion. In the future we aim to apply further quality algorithms to improve the library based on spectral replicate analyses.

Interconnecting different molecular levels through databases – a systems biology approach

As described earlier, ProMEX provides also meta-information for every mass spectrum, thereby allowing the user to trace back the experimental origin of the protein appearance. Additionally, the protein identification is linked to transcript and metabolite data via CSB.DB and the Metabolome database (GMD) [1,20]. Gene expression databases such as AtGenExpress can be directly searched with AGI codes of identified proteins looking for correlations with other genes. Metabolite data together with experimental data and reaction pathways are linked automatically via the AGI code of the identified protein. By accessing this interconnected information network data interpretation becomes more convenient. Even more important is that due to the unbiased nature of such large-scale data sets the immediate understanding is complicated. Therefore data storage in a useful way is in our expe-

rience indispensable to allow subsequent interpretation in the light of new biochemical knowledge. Thus, the data have to be made available for the community to revalidate, reconfirm or explore new information. These linked databases are probably one of the most important challenges for systems biology in the future.

Conclusion

Here we present the plant proteomics reference database ProMEX. The database consists of tryptic peptide/phosphopeptide fragmentation mass spectra and has the potential to include all different kinds of mass spectra as demonstrated with phosphorylation site mass spectra. Search algorithms are implemented which allow the identification of proteins/peptides based on mass spectral library matching. In case complete LC/MS runs are uploaded as mzData formats it is possible to obtain semiquantitative information in form of the cumulative sum of spectra per peptide and protein. The database allows text searches based on metadata like experimental information of the samples, mass spectrometric instrument parameters or unique protein identifier like AGI codes. ProMEX integrates proteomics data with other levels of molecular organization by linking the peptide-identification to metabolite, pathway, and transcript databases. Based on these capabilities we will exploit the search function of the database in future and extend the approach to metabolite spectra.

Availability and requirements

Project name: ProMEX

Project home page: <http://promex.mpimp-golm.mpg.de/>

Operating system(s): Available as web-based service, accessible via any web-browser

License: The service is freely available.

The BioMOBY web service *getTrypticPeptideSequenceByAGI* is listed in mobycentral under the creator *bioinformatics.mpimpgolm.mpg.de*.

The content of the peptide and experiment tables will be made available upon request either as *mdf* file for a Microsoft SQL Server Express database (freely downloadable) or as comma separated value (*csv*) file.

Authors' contributions

JH implemented the database and the search algorithms, and wrote parts of the manuscript. SW tested the service, validated the results and wrote parts of the manuscript. MN selected the mass spectra, assisted to set up the database and wrote parts of the manuscript. DS was involved in the design of the project. JS and DW supervised the

project and wrote parts of the manuscript. WW conceived and initiated a mass spectral reference library for the investigation of experimental mass fragment intensity distributions and compound identification, designed the study, and wrote parts of the manuscript.

Acknowledgements

Jan Hummel is grateful to Björn Usadel and Dirk Haase for technical support regarding BioMOBY, and Witold E. Wolski for assistance with mass spectra comparisons. Finally, we want to thank the four anonymous reviewers for their kind and constructive help with this manuscript.

References

1. Kopka J, Schauer N, Krueger S, Birkemeyer C, Usadel B, Bergmuller E, Dormann P, Weckwerth W, Gibon Y, Stitt M, Willmitzer L, Fernie AR, Steinhauser D: **GMD@CSB.DB: the Golm Metabolome Database.** *Bioinformatics* 2005, **21(8)**:1635-1638.
2. Wolski W, Lalowski M, Martus P, Herwig R, Giavalisco P, Gobom J, Sickmann A, Lehrach H, Reinert K: **Transformation and other factors of the peptide mass spectrometry pairwise peak-list comparison process.** *BMC Bioinformatics* 2005, **6(1)**:285.
3. Washburn MP, Wolters D, Yates JR: **Large-scale analysis of the yeast proteome by multidimensional protein identification technology.** *Nat Biotechnol* 2001, **19(3)**:242-247.
4. Wienkoop S, Larrainzar E, Niemann M, Gonzalez E, Lehmann U, Weckwerth W: **Stable isotope-free quantitative shotgun proteomics combined with sample pattern recognition for rapid diagnostics - a case study in *Medicago truncatula* nodules.** *Journal of Separation Science* 2006, **29**:2793-2801.
5. Wienkoop S, Gliński M, Tanaka N, Tolstikov V, Fiehn O, Weckwerth W: **Linking protein fractionation with multidimensional monolithic RP peptide chromatography/mass spectrometry enhances protein identification from complex mixtures even in the presence of abundant proteins.** *Rapid Communications of Mass Spectrometry* 2004, **18**:643-650.
6. Lam H, Deutsch EW, Eddes JS, Eng JK, King N, Stein SE, Aebersold R: **Development and validation of a spectral library searching method for peptide identification from MS/MS.** *Proteomics* 2007, **7(5)**:655-667.
7. Stein SE, Scott DR: **Optimization and Testing of Mass-Spectral Library Search Algorithms for Compound Identification.** *J Am Soc Mass Spectr* 1994, **5(9)**:859-866.
8. Stein SE: **An integrated method for spectrum extraction and compound identification from gas chromatography/mass spectrometry data.** *J Am Soc Mass Spectr* 1999, **10(8)**:770-781.
9. Weckwerth W, Wenzel K, Fiehn O: **Process for the integrated extraction identification, and quantification of metabolites, proteins and RNA to reveal their co-regulation in biochemical networks.** *Proteomics* 2004, **4(1)**:78-83.
10. Morgenthal K, Wienkoop S, Scholz M, Selbig J, Weckwerth W: **Correlative GC-TOF-MS based metabolite profiling and LC-MS based protein profiling reveal time-related systemic regulation of metabolite-protein networks and improve pattern recognition for multiple biomarker selection.** *Metabolomics* 2005, **1(2)**:109-121.
11. Wolschin F, Weckwerth W: **Combining metal oxide affinity chromatography (MOAC) and selective mass spectrometry for robust identification of in vivo protein phosphorylation sites.** *Plant methods [electronic resource]* 2005, **1(1)**:9.
12. Wienkoop S, Zoeller D, Ebert B, Simon-Rosin U, Fisahn J, Gliński M, Weckwerth W: **Cell-specific protein profiling in *Arabidopsis thaliana* trichomes: identification of trichome-located proteins involved in sulfur metabolism and detoxification.** *Phytochemistry* 2004, **65(11)**:1641-1649.
13. Elias JE, Gibbons FD, King OD, Roth FP, Gygi SP: **Intensity-based protein identification by machine learning from a library of tandem mass spectra.** *Nat Biotechnol* 2004, **22(2)**:214-219.
14. Eng JK, McCormack AL, Yates JR: **An Approach to Correlate Tandem Mass-Spectral Data of Peptides with Amino-Acid-Sequences in a Protein Database.** *J Am Soc Mass Spectr* 1994, **5(11)**:976-989.

15. Liu H, Sadygov RG, Yates JR 3rd: **A model for random sampling and estimation of relative protein abundance in shotgun proteomics.** *Anal Chem* 2004, **76(14)**:4193-4201.
16. Wolschin F, Weckwerth W: **Methionine oxidation in peptides-a source for false positive phosphopeptide identification in neutral loss driven MS(3).** *Rapid Commun Mass Spectrom* 2006, **20(16)**:2516-2518.
17. Wolschin F, Lehmann U, Glinski M, Weckwerth W: **An integrated strategy for identification and relative quantification of site-specific protein phosphorylation using liquid chromatography coupled to MS2/MS3.** *Rapid Commun Mass Spectrom* 2005, **19(24)**:3626-3632.
18. Glinski M, Romeis T, Witte CP, Wienkoop S, Weckwerth W: **Stable isotope labeling of phosphopeptides for multiparallel kinase target analysis and identification of phosphorylation sites.** *Rapid Commun Mass Spectrom* 2003, **17(14)**:1579-1584.
19. Glinski M, Weckwerth W: **Differential multisite phosphorylation of the trehalose-6-phosphate synthase gene family in Arabidopsis thaliana - A mass spectrometry-based process for multiparallel peptide library phosphorylation analysis.** *Mol Cell Proteomics* 2005, **4(10)**:1614-1625.
20. Steinhauser D, Usadel B, Luedemann A, Thimm O, Kopka J: **CSB.DB: a comprehensive systems-biology database.** *Bioinformatics* 2004, **20(18)**:3647-3651.

Publish with **BioMed Central** and every scientist can read your work free of charge

"BioMed Central will be the most significant development for disseminating the results of biomedical research in our lifetime."

Sir Paul Nurse, Cancer Research UK

Your research papers will be:

- available free of charge to the entire biomedical community
- peer reviewed and published immediately upon acceptance
- cited in PubMed and archived on PubMed Central
- yours — you keep the copyright

Submit your manuscript here:
http://www.biomedcentral.com/info/publishing_adv.asp

