

# Heavy-quark form factors in the large $\beta_0$ limit

Andrey G. Grozin<sup>1,2,3,4,a</sup>

<sup>1</sup> Budker Institute of Nuclear Physics, Novosibirsk, Russia

<sup>2</sup> Institut für Theoretische Teilchenphysik, Karlsruher Institut für Technologie, Karlsruhe, Germany

<sup>3</sup> THEP, Institut für Physik, Universität Mainz, Mainz, Germany

<sup>4</sup> Novosibirsk State University, Novosibirsk, Russia

Received: 27 April 2017 / Accepted: 23 June 2017 / Published online: 7 July 2017

© The Author(s) 2017. This article is an open access publication

**Abstract** Heavy-quark form factors are calculated at  $\beta_0\alpha_s \sim 1$  to all orders in  $\alpha_s$  at the first order in  $1/\beta_0$ . Using the inversion relation generalized to vertex functions, we reduce the massive on-shell Feynman integral to the HQET one. This HQET vertex integral can be expressed via a  ${}_2F_1$  function; the  $n$ th term of its  $\varepsilon$  expansion is explicitly known. We confirm existing results for  $n_f^{L-1}\alpha_s^L$  terms in the form factors (up to  $L = 3$ ), and we present results for higher  $L$ .

## 1 Introduction

Quark form factors are building blocks for various production cross sections and decay widths in QCD. Massive quark form factors are known up to two loops [1]; recently they have been calculated at three loops in the large  $N_c$  limit [2].

We shall consider heavy-quark form factors in the large  $\beta_0$  limit, where  $\beta_0\alpha_s \sim 1$ , and  $1/\beta_0$  is an expansion parameter (see the reviews [3–5]). A bare form factor can be written as

$$F = 1 + \sum_{L=1}^{\infty} \sum_{n=0}^{L-1} a_{Ln} \beta_0^n \left( \frac{g_0^2}{(4\pi)^{d/2}} \right)^L. \quad (1)$$

Keeping terms with the highest degree of  $\beta_0$  in each order of perturbation theory, we get

$$F = 1 + \frac{1}{\beta_0} f \left( \frac{\beta_0 g_0^2}{(4\pi)^{d/2}} \right) + \mathcal{O} \left( \frac{1}{\beta_0^2} \right). \quad (2)$$

The leading coefficients  $a_{L,L-1}$  can easily be obtained from  $n_f^{L-1}$  terms (Fig. 1). We shall consider only the first  $1/\beta_0$  order.<sup>1</sup>

<sup>1</sup> In some cases it is possible to obtain results for  $1/\beta_0^2$  corrections; see, e.g. [6–8].

<sup>a</sup> e-mail: A.G.Grozin@inp.nsk.su

## 2 Heavy-quark bilinear currents

We consider the QCD currents

$$J_0 = \bar{Q}_0 \Gamma Q_0 = Z(\alpha_s^{(n_f)}(\mu)) J(\mu), \quad \Gamma = \gamma^{[\mu_1} \dots \gamma^{\mu_n]}, \quad (3)$$

where  $Q_0$  is a bare heavy-quark field. The antisymmetrized product of  $n$   $\gamma$  matrices has the property

$$\gamma^\mu \Gamma \gamma_\mu = \eta(d - 2n) \Gamma, \quad \eta = (-1)^n. \quad (4)$$

All results for form factors of this current will explicitly depend on  $n$  and  $\eta$ .

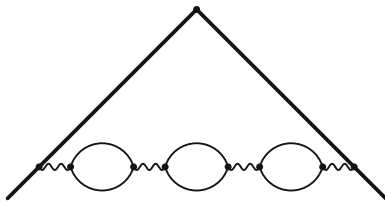
In situations when the initial heavy-quark momentum  $p_1$  and the final one  $p_2$  can be written as  $p_{1,2} = m v_{1,2} + k_{1,2}$  ( $m$  is the on-shell mass,  $v_{1,2}^2 = 1$ ) with small residual momenta  $k_{1,2} \ll m$ , these currents can be expanded in HQET ones [9, 10]:

$$J(\mu) = \sum_{i=0}^2 H_i(\mu, \mu') \tilde{J}_i(\mu') + \frac{1}{2m} \sum_i G_i(\mu, \mu') \tilde{O}_i(\mu') + \mathcal{O} \left( \frac{1}{m^2} \right), \quad (5)$$

where the leading HQET currents are

$$\tilde{J}_{i0} = \bar{h}_{v_2 0} \Gamma_i h_{v_1 0} = \tilde{Z}(\alpha_s^{(n_f)}(\mu)) \tilde{J}_i(\mu), \quad \Gamma_i = \Gamma, \quad \not{v}_1 \Gamma + \Gamma \not{v}_2, \quad \not{v}_1 \Gamma \not{v}_2, \quad (6)$$

and the  $\tilde{O}_i$  are local and bilocal dimension-4 HQET operators with appropriate quantum numbers. Here  $h_{v,2,0}$  are two (unrelated) bare fields describing HQET quarks with the velocities  $v_{1,2}$  having small (variable) residual momenta; the HQET Lagrangian explicitly contains  $v_{1,2}$ . These reference velocities can be changed by arbitrary small vectors of order  $k_i/m$  (reparametrization invariance). The HQET



**Fig. 1** Diagrams producing the highest degree of  $n_f$  in each order of perturbation theory

current renormalization constant  $\tilde{Z}$  does not depend on the Dirac structure and is a function of the Minkowski angle  $\vartheta$ :  $v_1 \cdot v_2 = \cosh \vartheta = w$ .

For our purpose it is convenient to choose  $v_{1,2} = p_{1,2}/m$ , i.e., both residual momenta  $k_{1,2} = 0$ . Then the matrix elements of  $\tilde{O}_i$  vanish: non-zero expressions for these matrix elements (having dimensionality of energy) cannot be constructed, because we have no non-zero dimensionful parameters. The coefficients  $H_i$  in (5) can be obtained by matching the on-shell matrix elements ( $k_{1,2} = 0$ ) in QCD and HQET:

$$\langle Q(p_2 = m\tilde{v}_2) | J_0 | Q(p_1 = mv_1) \rangle = \sum_{i=0}^2 F_i \bar{u}_2 \Gamma_i u_1,$$

$$\langle Q(k_2 = 0) | \tilde{J}_{i0} | Q(k_1 = 0) \rangle = \tilde{F}_i \bar{u}_2 \Gamma_i u_1, \quad \tilde{F}_i = 1, \tag{7}$$

where  $u_{1,2}$  are the Dirac spinors of the initial quark and the final one (all loop corrections to  $\tilde{F}_i$  vanish because they contain no scale). Therefore the bare matching coefficients (in the relation similar to (5) but for the bare currents) are  $H_i^0 = F_i/\tilde{F}_i = F_i$ . The renormalized matching coefficients are

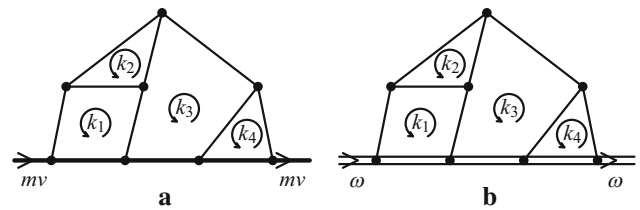
$$H_i(\mu, \mu') = H_i^0 \frac{\tilde{Z}(\alpha_s^{(n_f)}(\mu'))}{Z(\alpha_s^{(n_f)}(\mu))} = \frac{F_i \tilde{Z}}{\tilde{F}_i Z}. \tag{8}$$

UV divergences cancel in the ratio  $F_i/Z$  as well as in the ratio  $\tilde{F}_i/\tilde{Z}$ . Both  $F_i$  and  $\tilde{F}_i$  contain IR divergences which cancel in the ratio  $F_i/\tilde{F}_i$  because HQET is constructed to reproduce the IR behaviour of QCD ( $\tilde{F}_i$  have no loop corrections because their UV and IR divergences cancel each other).

The dependence of  $H_i(\mu, \mu')$  on  $\mu$  and  $\mu'$  is determined by the RG equations. Their solution can be written as

$$H_i(\mu, \mu') = \hat{H}_i \left( \frac{\alpha_s^{(n_f)}(\mu)}{\alpha_s^{(n_f)}(\mu_0)} \right)^{\gamma_{n0}/(2\beta_0^{(n_f)})} K_{\gamma_n^{(n_f)}}(\alpha_s^{(n_f)}(\mu))$$

$$\times \left( \frac{\alpha_s^{(n_f)}(\mu')}{\alpha_s^{(n_f)}(\mu_0)} \right)^{-\tilde{\gamma}_0/(2\beta_0^{(n_f)})} K_{-\tilde{\gamma}}^{(n_f)}(\alpha_s^{(n_f)}(\mu')), \tag{9}$$



**Fig. 2** On-shell massive self-energy integrals and off-shell HQET ones

where for any anomalous dimension  $\gamma(\alpha_s) = \gamma_0\alpha_s/(4\pi) + \gamma_1(\alpha_s/(4\pi))^2 + \dots$  we define

$$K_\gamma(\alpha_s) = \exp \int_0^{\alpha_s} \frac{d\alpha_s}{\alpha_s} \left( \frac{\gamma(\alpha_s)}{2\beta(\alpha_s)} - \frac{\gamma_0}{2\beta_0} \right)$$

$$= 1 + \frac{\gamma_0}{2\beta_0} \left( \frac{\gamma_1}{\gamma_0} - \frac{\beta_1}{\beta_0} \right) \frac{\alpha_s}{4\pi} + \dots \tag{10}$$

Matrix elements of the currents with  $n = 0, 1$  can be written via smaller numbers of form factors:

$$\langle Q(mv_2) | J | Q(mv_1) \rangle = F^S \bar{u}_2 u_1,$$

$$F^S = F_0 + 2F_1 + (2w - 1)F_2, \tag{11}$$

where  $F_i$  with  $n = 0, \eta = 1$  are used, and

$$\langle Q(mv_2) | J^\mu | Q(mv_1) \rangle = (F_1^V + F_2^V) \bar{u}_2 \gamma^\mu u_1$$

$$- F_2^V \bar{u}_2 u_1 \frac{(v_1 + v_2)^\mu}{2}, \tag{12}$$

$$F_1^V = F_0 + 2F_1 - (2w - 3)F_2,$$

$$F_2^V = -4(F_1 + F_2), \tag{13}$$

where  $F_i$  with  $n = 1, \eta = -1$  are used.

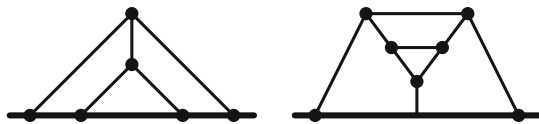
### 3 Inversion relations

On-shell massive self-energy integrals with one massive line and any number of massless ones in some cases can be expressed via similar off-shell HQET integrals. Suppose all massless lines can be drawn at one side of the massive one and the resulting graph is planar (e.g., the diagram in Fig. 2a). Lines of such a diagram subdivide the plane into a number of polygonal cells (plus the exterior); with each cell we can associate a loop momentum (flowing counter-clockwise). Then outer massless edges of the diagram correspond to the denominators  $-k_i^2 - i0$ ; inner massless edges to  $-(k_i - k_j)^2 - i0$ ; and massive edges to  $m^2 - (k_i + mv)^2 - i0$  (Table 1). The corresponding HQET diagram (Fig. 2b) has HQET denominators  $-2k_i \cdot v - 2\omega - i0$  instead of massive ones. First we perform a Wick rotation of all loop momenta  $k_{i0} \rightarrow ik_{i0}$  (in the  $v$  rest frame). Then, in Euclidean momentum space, we invert each loop momentum [11]:

$$k_i \rightarrow \frac{k_i}{k_i^2}. \tag{14}$$

**Table 1** Inversion relations

	Minkowski	Euclidean	Inversion
Outer massless	$-k_i^2 - i0$	$k_i^2$	$\frac{1}{k_i^2}$
Inner massless	$-(k_i - k_j)^2 - i0$	$(k_i - k_j)^2$	$\frac{(k_i - k_j)^2}{k_i^2 k_j^2}$
Massive	$-k_i^2 - 2m v \cdot k_i - i0$	$k_i^2 - 2imk_{i0}$	$m \frac{-2\omega - 2ik_{i0}}{k_i^2}$
HQET	$-2\omega - 2k_i \cdot v - i0$	$-2\omega - 2ik_{i0}$	$m^{-1} \frac{k_i^2 - 2ik_{i0}}{k_i^2}$
Measure	$d^d k_i$	$i d^d k$	$i \frac{d^d k_i}{(k_i^2)^d}$



**Fig. 3** Examples of on-shell massive diagrams which cannot be transformed to off-shell HQET ones by inversion relations

Inversion transforms massive denominators to HQET ones (and vice versa) if we identify

$$-2\omega = m^{-1}, \tag{15}$$

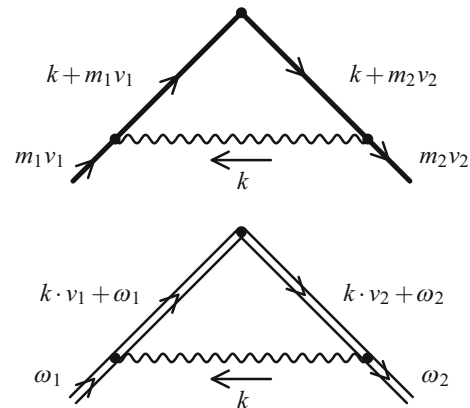
see Table 1. As a result, a massive on-shell diagram (Fig. 2a) becomes  $m^{-\sum n_i}$  (the sum runs over all massive line segments,  $n_i$  are their indices, i.e. the powers of the denominators) times the off-shell HQET diagram (Fig. 2b) with  $\omega = -(2m)^{-1}$  (15). The indices of all inner massless edges, as well as of all massive edges (which become HQET ones), remain intact (see Table 1). From the same table it is clear that the index of an outer massless edge becomes  $d - \sum n_i$ , where the sum runs over all edges of the cell to which this outer edge belongs (they can be all massless, or one of them can be massive). If there is a cell  $k_i$  bounded only by inner massless edges, and maybe one massive one, then the denominator  $(k_i^2)^{d-\sum n_j}$  will appear (Fig. 3). This denominator does not correspond to any line, and hence the resulting integral is not a Feynman integral at all; in this case, the discussed relation becomes rather useless (though formally correct). The inversion relations [11] were used, e.g., in [12–14].

The inversion relations can be generalized to similar vertex integrals; the masses of the initial particle and the final one may differ. At one loop (Fig. 4), the integrals

$$M(n_1, n_2, n; \vartheta; m_1, m_2) = \int \frac{d^d k}{i\pi^{d/2}} \tag{16}$$

$$\times \frac{1}{[-k^2 - 2m_1 v_1 \cdot k - i0]^{n_1} [-k^2 - 2m_2 v_2 \cdot k - i0]^{n_2} (-k^2 - i0)^n},$$

$$I(n_1, n_2, n; \vartheta; \omega_1, \omega_2) = \int \frac{d^d k}{i\pi^{d/2}}$$



**Fig. 4** One-loop vertex integrals

$$\times \frac{1}{[-2k \cdot v_1 - 2\omega_1 - i0]^{n_1} [-2k \cdot v_2 - 2\omega_2 - i0]^{n_2} (-k^2 - i0)^n} \tag{17}$$

are related by

$$M(n_1, n_2, n; \vartheta; m_1, m_2) = m_1^{-n_1} m_2^{-n_2} \times I(n_1, n_2, d - n_1 - n_2 - n; \vartheta; -(2m_1)^{-1}, -(2m_2)^{-1}). \tag{18}$$

The integrals  $I$  (17) have been investigated in [15]. Here we need only the integrals  $M$  (16) with  $m_1 = m_2$ ; they reduce to the integrals  $I$  (17) with  $\omega_1 = \omega_2$ , which are especially simple [15]:

$$I(n_1, n_2, n; \vartheta; \omega, \omega) = (-2\omega)^{d-n_1-n_2-2n} I(n_1 + n_2, n) \times {}_3F_2 \left( \begin{matrix} n_1, n_2, \frac{d}{2} - n \\ \frac{n_1+n_2}{2}, \frac{n_1+n_2+1}{2} \end{matrix} \middle| \frac{1 - \cosh \vartheta}{2} \right), \tag{19}$$

where

$$I(n_1, n) = \frac{\Gamma(-d + n_1 + 2n)\Gamma(d/2 - n)}{\Gamma(n_1)\Gamma(n)} \tag{20}$$

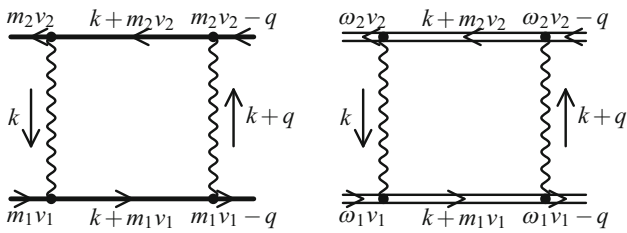


Fig. 5 Box diagrams

is the one-loop HQET self-energy integral. We only need integer  $n_{1,2}$ ; in this case all  $I$  reduce by IBP to 2 master integrals [15]:  $I(1, 0, n)$  (trivial) and  $I(1, 1, n)$  (given by (19)).

Inversion relations can be generalized to diagrams with more external legs. For example, the one-loop massive box diagram with two on-shell legs and the corresponding off-shell HQET one (Fig. 5)

$$M(n_1, n_2, n_3, n_4; \vartheta; m_1, m_2; q^2, q \cdot v_1, q \cdot v_2) = \int \frac{d^d k}{i\pi^{d/2}} \times \frac{1}{(-k^2 - 2m_1 v_1 \cdot k)^{n_1} (-k^2 - 2m_2 v_2 \cdot k)^{n_2} (-(k+q)^2)^{n_3} (-k^2)^{n_4}}, \tag{21}$$

$$I(n_1, n_2, n_3, n_4; \vartheta; \omega_1, \omega_2; q^2, q \cdot v_1, q \cdot v_2) = \int \frac{d^d k}{i\pi^{d/2}} \times \frac{1}{(-2k \cdot v_1 - 2\omega_1)^{n_1} (-2k \cdot v_2 - 2\omega_2)^{n_2} (-(k+q)^2)^{n_3} (-k^2)^{n_4}} \tag{22}$$

are related by

$$M(n_1, n_2, n_3, n_4; \vartheta; m_1, m_2; q^2, q \cdot v_1, q \cdot v_2) = m_1^{-n_1} m_2^{-n_2} (-q^2)^{n_3} I(n_1, n_2, n_3, d - n_1 - n_2 - n_3 - n_4; \vartheta; -(2m_1)^{-1}, -(2m_2)^{-1}; 1/q^2, q \cdot v_1/(-q^2), q \cdot v_2/(-q^2)). \tag{23}$$

### 4 Large- $\beta_0$ limit

We need only terms with the highest degree of  $n_f$ ; therefore, there is no need to distinguish between  $n_f$  and  $n_l = n_f - 1$ , or any  $n_f + \text{const}$ . The gluon propagator can be written as

$$D_{\mu\nu}(k) = \frac{1}{k^2(1 - \Pi(k^2))} \left( g_{\mu\nu} - \frac{k_\mu k_\nu}{k^2} \right), \tag{24}$$

where the gluon self-energy is

$$\Pi(k^2) = \beta_0 \frac{g_0^2}{(4\pi)^{d/2}} e^{-\gamma\epsilon} \frac{D(\epsilon)}{\epsilon} (-k^2)^{-\epsilon}, \tag{25}$$

$$D(\epsilon) = e^{\gamma\epsilon} \frac{(1-\epsilon)\Gamma(1+\epsilon)\Gamma^2(1-\epsilon)}{(1-2\epsilon)(1-\frac{2}{3}\epsilon)\Gamma(1-2\epsilon)} = 1 + \frac{5}{3}\epsilon + \dots$$

At this leading large  $\beta_0$  order, the coupling constant renormalization is simple:

$$\beta_0 \frac{g_0^2}{(4\pi)^{d/2}} e^{-\gamma\epsilon} = b Z_\alpha(b) \mu^{2\epsilon},$$

$$b = \beta_0 \frac{\alpha_s(\mu)}{4\pi}, \quad Z_\alpha = \frac{1}{1 + b/\epsilon}. \tag{26}$$

The bare QCD matrix elements can be written in the form [6, 16]

$$F_i = \delta_{i0} + \frac{1}{\beta_0} \sum_{L=1}^{\infty} \frac{f_i(\epsilon, L\epsilon)}{L} \Pi(-m^2)^L + \mathcal{O}\left(\frac{1}{\beta_0^2}\right). \tag{27}$$

It is convenient to write the functions  $f_i(\epsilon, u)$  in the form usual for on-shell massive QCD problems (see [5])

$$f_i(\epsilon, u) = C_F \frac{e^{\gamma\epsilon}}{D(\epsilon)} \frac{\Gamma(1-2u)\Gamma(1+u)}{\Gamma(3-u-\epsilon)} N_i(\epsilon, u). \tag{28}$$

We calculate the vertex function (Fig. 1) and multiply it by  $Z_Q^{\text{os}}$  with the  $1/\beta_0$  accuracy (see [5]). Reducing on-shell massive QCD integrals to off-shell HQET ones by the inversion relation (18) and then to the master integrals by IBP [15], we obtain

$$N_0(\epsilon, u) = \left[ -\eta u \frac{n-2+\epsilon}{w-1} - 2(w+1)u(n-2)^2 - u(\eta u + 4(w+1)\epsilon)(n-2) + 2(2-u)(w+(w+1)u) - (6w+2u+\eta u^2)\epsilon + 2(w-(w+1)u)\epsilon^2 \right] F$$

$$+ \eta u \frac{n-2+\epsilon}{w-1} + 2(n-2)^2 + 4\epsilon(n-2) - 6(1-u^2) + 2(1-u)(5+2u)\epsilon - 2(1-2u)\epsilon^2,$$

$$N_1(\epsilon, u) = u \left[ \eta w \frac{n-2+\epsilon}{w-1} - \eta u(n-2) - 2 + u + \epsilon - \eta u \epsilon \right] F - \eta u \frac{n-2+\epsilon}{w-1},$$

$$N_2(\epsilon, u) = \eta u \frac{n-2+\epsilon}{w-1} \times [1 - (1+(w-1)u)F], \tag{29}$$

where

$$F = {}_2F_1 \left( 1, 1+u \mid \frac{1-w}{2} \right) \tag{30}$$

(the same function appears also in the one-loop self-energy integral with arbitrary masses  $m_{1,2}$  and arbitrary  $p^2$ , where

both indices are equal to 1 [17]). At  $\vartheta = 0$  this result agrees with the result of [18] at  $m_1 = m_2$ ; see also [5].<sup>2</sup>

Re-expressing the bare form factors (27) via the renormalized coupling we obtain

$$F_i = \delta_{i0} + \frac{1}{\beta_0} \sum_{L=1}^{\infty} \frac{f_i(\varepsilon, L\varepsilon)}{L} \left[ D(\varepsilon) \left( \frac{\mu^2}{m^2} \right)^\varepsilon \frac{b}{\varepsilon + b} \right]^L. \tag{31}$$

We should have (see (8))

$$\log F_0 = \log(Z(\alpha_s(\mu))/\tilde{Z}(\alpha_s(\mu))) + \log H(\mu, \mu) : \tag{32}$$

negative degrees of  $\varepsilon$  go to  $\log(Z/\tilde{Z})$ , non-negative ones to  $\log H$ . The function

$$f_0(\varepsilon, u) D(\varepsilon)^{u/\varepsilon} \left( \frac{\mu^2}{m^2} \right)^u = \sum_{n,m=0}^{\infty} f_{nm} \varepsilon^n u^m \tag{33}$$

is regular at the origin; expanding  $(b/(\varepsilon+b))^L$  in  $b$ , we obtain a quadruple sum. In the coefficient of  $\varepsilon^{-1}$  all  $f_{nm}$  except  $f_{n0}$  cancel; differentiating this coefficient in  $\log b$  (and using the fact that  $F$  (30) at  $u = 0$  is  $\vartheta/\sinh \vartheta$ ) we obtain the anomalous dimension corresponding to  $Z/\tilde{Z}$  [6, 16]:

$$\gamma_n - \tilde{\gamma} = -2 \frac{b}{\beta_0} f_0(-b, 0) + \mathcal{O}\left(\frac{1}{\beta_0^2}\right). \tag{34}$$

These anomalous dimensions at the  $1/\beta_0$  order are [19, 20]

$$\gamma_n = 4C_F \frac{b}{\beta_0} \frac{(1 + \frac{2}{3}b)\Gamma(2 + 2b)}{(1 + b)^2(2 + b)\Gamma^3(1 + b)\Gamma(1 - b)} \times (n - 1)(3 - n + 2b) + \mathcal{O}\left(\frac{1}{\beta_0^2}\right), \tag{35}$$

$$\tilde{\gamma} = 4C_F \frac{b}{\beta_0} \frac{(1 + \frac{2}{3}b)\Gamma(2 + 2b)}{(1 + b)\Gamma^3(1 + b)\Gamma(1 - b)} (\vartheta \coth \vartheta - 1) + \mathcal{O}\left(\frac{1}{\beta_0^2}\right). \tag{36}$$

Our results satisfy this requirement ( $f_{1,2}(-b, 0) = 0$  because the QCD current  $J$  does not mix with currents with other Dirac structures).

<sup>2</sup> There are a few typos in Sect. 8.8 of [5]. The unnumbered formula below (8.93) should read

$$R_0 = \cosh(Lu), \quad R_1 = \frac{\sinh[(1 - 2u)L/2]}{\sinh(L/2)}.$$

In the second formula in (8.95), the coefficient of  $R_0$  should contain an extra factor 3. In both formulae in (8.96), their right-hand sides should be  $1 + \alpha_s$  correction.

In the coefficient of  $\varepsilon^0$  all  $f_{nm}$  except  $f_{n0}$  and  $f_{0m}$  cancel. The coefficients  $f_{n0}$  form  $K_{\gamma_n - \tilde{\gamma}}(\alpha_s(\mu))$ , see (9); we have [6]

$$\hat{H}_i = \delta_{i0} + \frac{1}{\beta_0} \int_0^\infty du e^{-u/b} S_i(u) + \mathcal{O}\left(\frac{1}{\beta_0^2}\right), \tag{37}$$

where the Borel images of the perturbative series for  $\hat{H}_i$  are

$$S_i(u) = \frac{1}{u} \left[ \left( e^{5/3} \frac{\mu_0^2}{m^2} \right)^u f_i(0, u) - f_i(0, 0) \right]. \tag{38}$$

The integral (37) is not well defined because of poles at the integration contour. The leading renormalon ambiguities are given by the residues at  $u = 1/2$  [21] (see also [5]). It is easy to calculate these residues because  $F$  (30) at  $u = 1/2$  is just  $2/(w + 1)$ :

$$\Delta H_0 = \left( \frac{4}{w + 1} - 3 \right) \frac{\Delta \bar{\Lambda}}{2m}, \quad \Delta H_1 = \frac{1}{w + 1} \frac{\Delta \bar{\Lambda}}{2m}, \tag{39}$$

$$\Delta H_2 = 0,$$

where

$$\Delta \bar{\Lambda} = -2 \frac{C_F}{\beta_0} e^{5/6} \Lambda_{\overline{\text{MS}}}. \tag{40}$$

As demonstrated in [21], matrix elements of the QCD currents between ground-state mesons (pseudoscalar or vector) are unambiguous: the IR renormalon ambiguities of the leading matching coefficients  $H_i$  are compensated by the UV renormalon ambiguities in the matrix elements of the  $1/m$  suppressed HQET operators  $\tilde{O}_i$  in (5) (see also [5]).

The hypergeometric function  $F$  (30) has been expanded in  $u$  to all orders [17], the coefficients are expressed via Nielsen polylogarithms  $S_{nm}(x)$ . The result [17] is written for the case of an Euclidean angle<sup>3</sup>; its analytical continuation to Minkowski angles is

$$F = \frac{1}{\sinh \vartheta (2 \cosh(\vartheta/2))^{2u}} \left[ \frac{\sinh(\vartheta u)}{u} - e^{-\vartheta u} \sum_{n=1}^{\infty} u^n \sum_{m=1}^n (-2)^{n-m} S_{m, n-m+1}(-e^\vartheta) + e^{\vartheta u} \sum_{n=1}^{\infty} u^n \sum_{m=1}^n (-2)^{n-m} S_{m, n-m+1}(-e^{-\vartheta}) \right]. \tag{41}$$

It is possible to re-express this expansion in terms of Nielsen polylogarithms of just one argument, see [23], but then the symmetry  $\vartheta \rightarrow -\vartheta$  will not be explicit.

<sup>3</sup> M. Yu. Kalmykov has informed me that there is a typo: the power of  $\cos \vartheta$  in (2.7) should be  $1 + 2\varepsilon$ . This typo has been corrected in [22].

**Acknowledgements** I am grateful to M. Steinhauser for useful comments and hospitality in Karlsruhe, where the major part of this work was done; to J. M. Henn for useful discussions and hospitality in Mainz; and to M. Yu. Kalmykov for bringing Ref. [17] to my attention and discussions related to it.

**Open Access** This article is distributed under the terms of the Creative Commons Attribution 4.0 International License (<http://creativecommons.org/licenses/by/4.0/>), which permits unrestricted use, distribution, and reproduction in any medium, provided you give appropriate credit to the original author(s) and the source, provide a link to the Creative Commons license, and indicate if changes were made. Funded by SCOAP<sup>3</sup>.

**Appendix A: Anticommuting  $\gamma_5$  and 't Hooft–Veltman  $\gamma_5$**

For flavour-nonsinglet currents one may use the anticommuting  $\gamma_5$  without encountering contradictions; they are related to the currents with the 't Hooft–Veltman  $\gamma_5$  by a finite renormalization [24–26]:

$$(\bar{q}\gamma_5^{\text{AC}}\Gamma_n\tau q)_\mu = Z_{2-n}(\alpha^{(n_f)}(\mu))(\bar{q}\gamma_5^{\text{HV}}\Gamma_n\tau q)_\mu, \tag{A.1}$$

where  $\tau$  is a flavour matrix with  $\text{Tr } \tau = 0$ . The currents with  $\gamma_5^{\text{AC}}\Gamma_n$  have anomalous dimensions  $\gamma_n$ , because they can be obtained from the case of massless quarks;  $\gamma_5^{\text{HV}}\Gamma_n$  is just  $\Gamma_{4-n}$  with reshuffled components. Equating the derivatives in  $d \log \mu$  we obtain

$$Z_{2-n}(\alpha_s) = K_{\gamma_n-\gamma_{4-n}}^{(n_f)}(\alpha_s), \tag{A.2}$$

where the anomalous dimensions  $\gamma_n$  and  $\gamma_{4-n}$  differ starting from two loops. In particular,  $Z_0(\alpha_s) = 1$ . In HQET currents with  $\gamma_5^{\text{AC}}$  and with  $\gamma_5^{\text{HV}}$  have the same anomalous dimension  $\tilde{\gamma}$ , and the finite renormalization factor similar to (A.2) is 1. In the large  $\beta_0$  limit (see (35))

$$Z_n(\alpha_s) = \exp\left[-\frac{8n}{\beta_0} \times \int_0^b db \frac{(1 + \frac{2}{3}b)\Gamma(2 + 2b)}{(1 + b)^2(2 + b)\Gamma^3(1 + b)\Gamma(1 - b)} + \mathcal{O}\left(\frac{1}{\beta_0^2}\right)\right]. \tag{A.3}$$

At the leading  $1/\beta_0$  order we may use these formulae for flavour singlet currents, too. The matrix  $\gamma_5^{\text{AC}}\Gamma_n$  has the same property (4) but with  $\eta = -(-1)^n$ . From our results (27)–(29) we see that, indeed,

$$\hat{H}_{\gamma_5^{\text{AC}}\Gamma_n} = \hat{H}_{\Gamma_n}|_{\eta \rightarrow -\eta} = \hat{H}_{\gamma_5^{\text{HV}}\Gamma_n} = \hat{H}_{\Gamma_{4-n}}. \tag{A.4}$$

Matrix elements of the currents with  $\gamma_5^{\text{AC}}$  and  $n = 0, 1$  can be written via smaller numbers of form factors:

$$\langle Q(mv_2)|J|Q(mv_1)\rangle = F^P \bar{u}_2 \gamma_5^{\text{AC}} u_1, \tag{A.5}$$

$$F^P = F_0 - 2F_1 - (2w + 1)F_2,$$

where  $F_i$  with  $n = 0, \eta = -1$  are used, and

$$\langle Q(mv_2)|J^\mu|Q(mv_1)\rangle = F_1^A \bar{u}_2 \gamma_5^{\text{AC}} \gamma^\mu u_1 + F_2^A \bar{u}_2 \gamma_5^{\text{AC}} u_1 \frac{(v_2 - v_1)^\mu}{2},$$

$$F_1^A = F_0 + 2F_1 + (2w - 1)F_2,$$

$$F_2^A = 4(F_1 - F_2), \tag{A.6}$$

where  $F_i$  with  $n = 1, \eta = 1$  are used.

The divergence of the axial current is

$$i\partial_\mu(\bar{Q}_0\gamma_5^{\text{AC}}\gamma^\mu Q_0) = 2m_0\bar{Q}_0\gamma_5^{\text{AC}}Q_0, \tag{A.7}$$

where the bare mass  $m_0 = Z_m^{\text{os}}m$ . Taking the matrix element of this equation we obtain

$$F_1^A + \frac{w - 1}{2}F_2^A = Z_m^{\text{os}}F^P. \tag{A.8}$$

The on-shell mass renormalization constant  $Z_m^{\text{os}}$  at the first  $1/\beta_0$  order is given by the formula similar to (27), (28) with  $N_m(\varepsilon, u) = -2(3 - 2\varepsilon)(1 - u)$ ; see, e.g., [5]. And indeed, from (29), (A.5)–(A.6) we obtain

$$N_1^A + \frac{w - 1}{2}N_2^A = N^P + N_m. \tag{A.9}$$

**5 Appendix B: Expansion of the hypergeometric function  $F$**

We can also find several terms of this expansion using the Mathematica package HypExp [27, 28] (which uses HPL [29, 30]). This results in

$$F = \frac{1}{\sinh \vartheta} \left[ \vartheta - H_{-+}(\tau)u - (H_{-+-}(\tau) - 2H_{-++}(\tau)l) \frac{u^2}{2} - (H_{-+---}(\tau) - 2H_{-+-}(\tau)l + 2H_{-++}(\tau)l^2) \frac{u^3}{3} - \left( H_{-+----}(\tau) - 2H_{-+---}(\tau)l + 2H_{-+-}(\tau)l^2 - \frac{4}{3}H_{-+}(\tau)l^3 \right) \frac{u^4}{4} - \left( H_{-+-----}(\tau) - 2H_{-+----}(\tau)l + 2H_{-+---}(\tau)l^2 - \frac{4}{3}H_{-+-}(\tau)l^3 + \frac{2}{3}H_{-++}(\tau)l^4 \right) \frac{u^5}{5} - \left( H_{-+-----}(\tau) - 2H_{-+----}(\tau)l + 2H_{-+---}(\tau)l^2 - \frac{4}{3}H_{-+---}(\tau)l^3 + \frac{2}{3}H_{-+-}(\tau)l^4 - \frac{4}{15}H_{-+}(\tau)l^5 \right) \frac{u^6}{6} - \dots \right], \tag{B.10}$$



where

$$\begin{aligned} \tau &= \tanh \frac{\vartheta}{2}, \quad l = \frac{1}{2} H_-(\tau) = \log \cosh \frac{\vartheta}{2}, \\ H_+(\tau) &= \vartheta, \end{aligned} \tag{B.11}$$

and  $H_{\dots}(\tau)$  are harmonic polylogarithms (see [29–31]). Only one new polylogarithm appears at each order.

In order to compare the expansion coefficients in (41) and in (B.10), we need to transform them to harmonic polylogarithms of the same argument, which we choose as  $x = e^{-\vartheta}$ . In (41), we first rewrite  $S_{nm}(-x^{-1})$  via  $S_{nm}(-x)$  using the formula from [23]; then we rewrite  $S_{nm}(-x)$  via  $H_{\dots}(-x)$  and then via  $H_{\dots}(x)$ ; we rewrite  $\log \cosh(\vartheta/2)$  (B.11) via  $H_{\dots}(x)$ ; and finally we re-express products of harmonic polylogarithms via their linear combinations. In (B.10) we rewrite harmonic polylogarithms with  $\pm$  indices [30] via normal ones with indices  $0, \pm 1$ ; substitute  $\tau = (1-x)/(1+x)$  and re-express via  $H_{\dots}(x)$ ; and finally convert products of harmonic polylogarithms to sums. All these steps are done in Mathematica using HPL [29,30]. We have checked that all the coefficients presented in (B.10) agree with (41).

### Appendix C: Vector form factors

The vector form factors  $F_{1,2}^V$  (13) can be written in the form (27), (28); from (29), (13) we obtain

$$\begin{aligned} N_1^V(\varepsilon, u) &= 2[2w + u - 3u^2 - 3w\varepsilon + 2wu\varepsilon - (w - 3)u^2\varepsilon \\ &\quad + w\varepsilon^2 - (w + 1)u\varepsilon^2]F \\ &\quad - 2[2 + u - 3u^2 - 3\varepsilon + 2u\varepsilon \\ &\quad + 2u^2\varepsilon + \varepsilon^2 - 2u\varepsilon^2], \end{aligned} \tag{C.12}$$

$$N_2^V(\varepsilon, u) = 4u(1 + u - 2u\varepsilon)F. \tag{C.13}$$

All loop corrections to  $F_1^V$  vanish at  $\vartheta = 0$ , and hence  $N_1^V = 0$  at  $w = 1$ .

The form factor  $F_1^V = H_1^V/\tilde{Z}$ , where  $\tilde{Z}$  at the  $1/\beta_0$  order is determined by the anomalous dimension (36), and  $H_1^V$  contains only non-negative powers of  $\varepsilon$ . We choose  $\mu = \mu' = \mu_0 = m$ .  $H_1^V$  at  $\varepsilon = 0$  is given by the coefficients  $f_{n0}$  (which produce  $K_{-\tilde{\gamma}}$  (10)) and  $f_{0n}$  (which produce  $\hat{H}_1^V$  (37));  $\varepsilon^n$  terms ( $n > 0$ ) require all  $f_{nm}$ . Writing the expansion (B.10) as  $F = f_0 - f_1u - f_2u^2/2 - f_3u^3/3 - \dots$  we obtain up to four loops

$$\begin{aligned} H_1^V &= 1 + C_F \frac{b}{\beta_0} \left\{ -2wf_1 + (3w + 1)f_0 - 4 \right. \\ &\quad \left. - \left( wf_2 + (3w + 1)f_1 - \left( \frac{\pi^2}{6} + 8 \right) wf_0 + \frac{\pi^2}{6} + 8 \right) \varepsilon \right. \\ &\quad \left. - \left( \frac{2}{3}wf_3 + \frac{3w + 1}{2}f_2 + \left( \frac{\pi^2}{6} + 8 \right) wf_1 \right. \right. \end{aligned}$$

$$\begin{aligned} &\quad \left. + \left( \frac{2}{3}\zeta_3w - \frac{\pi^2}{4}w - \frac{\pi^2}{12} - 16w \right) f_0 - \frac{2}{3}\zeta_3 + \frac{\pi^2}{3} + 16 \right) \varepsilon^2 \\ &\quad - \left( \frac{w}{2}f_4 + \left( w + \frac{1}{3} \right) f_3 + \left( \frac{\pi^2}{12} + 4 \right) wf_2 \right. \\ &\quad \left. - \left( \frac{2}{3}\zeta_3w - \frac{\pi^2}{4}w - \frac{\pi^2}{12} - 16w \right) f_1 \right. \\ &\quad \left. - \left( \frac{\pi^4}{80}w - \zeta_3w - \frac{1}{3}\zeta_3 + \frac{2}{3}\pi^2w + 32w \right) f_0 \right. \\ &\quad \left. + \frac{\pi^4}{80} - \frac{4}{3}\zeta_3 + \frac{2}{3}\pi^2 + 32 \right) \varepsilon^3 + \dots \\ &\quad - b \left[ wf_2 + \left( \frac{19}{3}w + 1 \right) f_1 - \frac{1}{3} \left( 2\pi^2w + \frac{209}{6}w + \frac{1}{2} \right) f_0 \right. \\ &\quad \left. + \frac{2}{3} \left( \pi^2 + \frac{53}{3} \right) \right. \\ &\quad \left. + \left( 2wf_3 + \frac{1}{2} \left( \frac{47}{3}w + 3 \right) f_2 + \left( \frac{3}{2}\pi^2w + \frac{281}{9}w + \frac{1}{3} \right) f_1 \right. \right. \\ &\quad \left. \left. - \left( 8\zeta_3w + \frac{131}{36}\pi^2w + \frac{3}{4}\pi^2 + \frac{5813}{108}w - \frac{203}{36} \right) f_0 \right. \right. \\ &\quad \left. \left. + 8\zeta_3 + \frac{79}{18}\pi^2 + \frac{1301}{27} \right) \varepsilon \right. \\ &\quad \left. + \left( \frac{7}{2}wf_4 + \frac{1}{3} \left( \frac{103}{3}w + 7 \right) f_3 \right. \right. \\ &\quad \left. \left. + \frac{1}{3} \left( \frac{19}{4}\pi^2w + \frac{317}{3}w + 1 \right) f_2 \right. \right. \\ &\quad \left. \left. + \frac{1}{3} \left( 46\zeta_3w + \frac{271}{12}\pi^2w + \frac{19}{4}\pi^2 + \frac{6677}{18}w - \frac{203}{6} \right) f_1 \right. \right. \\ &\quad \left. \left. - \frac{1}{3} \left( \frac{199}{80}\pi^4w + \frac{317}{3}\zeta_3w + 23\zeta_3 + \frac{1693}{36}\pi^2w + \frac{5}{12}\pi^2 \right. \right. \right. \\ &\quad \left. \left. \left. + \frac{129389}{216}w - \frac{6563}{72} \right) f_0 \right. \right. \\ &\quad \left. \left. + \frac{1}{3} \left( \frac{199}{80}\pi^4 + \frac{386}{3}\zeta_3 + \frac{427}{9}\pi^2 + \frac{27425}{54} \right) \right) \varepsilon^2 + \dots \right] \\ &\quad - b^2 \left[ \frac{4}{3}wf_3 + \left( \frac{19}{3}w + 1 \right) f_2 \right. \\ &\quad \left. + \frac{1}{3} \left( 4\pi^2w + \frac{203}{3}w + 1 \right) f_1 \right. \\ &\quad \left. - \frac{1}{3} \left( 28\zeta_3w + \frac{38}{3}\pi^2w + 2\pi^2 + \frac{4919}{54}w - \frac{139}{6} \right) f_0 \right. \\ &\quad \left. + \frac{1}{3} \left( 28\zeta_3 + \frac{44}{3}\pi^2 + \frac{1834}{27} \right) \right. \\ &\quad \left. + \left( 6wf_4 + 4 \left( \frac{52}{9}w + 1 \right) f_3 \right. \right. \\ &\quad \left. \left. + \frac{1}{2} \left( 7\pi^2w + \frac{1171}{9}w + \frac{5}{3} \right) f_2 \right. \right. \\ &\quad \left. \left. + \left( 44\zeta_3w + \frac{359}{18}\pi^2w + \frac{7}{2}\pi^2 + \frac{5366}{27}w - \frac{310}{9} \right) f_1 \right. \right. \end{aligned}$$

$$\begin{aligned}
 & -\left(\frac{92}{45}\pi^4 w + \frac{1114}{9}\zeta_3 w + 22\zeta_3 + \frac{4075}{108}\pi^2 w + \frac{17}{36}\pi^2\right. \\
 & \left. + \frac{258445}{972}w - \frac{9473}{108}\right) f_0 \\
 & + \frac{1}{9}\left(\frac{92}{5}\pi^4 + 1312\zeta_3 + \frac{2063}{6}\pi^2 + \frac{43297}{27}\right)\varepsilon + \dots \Big] \\
 & -b^3\left[3wf_4 + 2\left(\frac{19}{3}w + 1\right)f_3 + \left(2\pi^2 w + \frac{203}{6}w + \frac{1}{2}\right)f_2\right. \\
 & \left. + \left(24\zeta_3 w + \frac{38}{3}\pi^2 w + 2\pi^2 + \frac{4955}{54}w - \frac{139}{6}\right)f_1\right. \\
 & \left. - \left(\frac{71}{60}\pi^4 w + \frac{233}{3}\zeta_3 w + 12\zeta_3 + \frac{203}{9}\pi^2 w + \frac{\pi^2}{3}\right.\right. \\
 & \left. \left. + \frac{34937}{324}w - \frac{6007}{108}\right)f_0\right. \\
 & \left. + \frac{1}{3}\left(\frac{71}{20}\pi^4 + 269\zeta_3 + \frac{206}{3}\pi^2 + \frac{4229}{27}\right) + \dots \right] \\
 & + \dots \Big\}. \tag{C.14}
 \end{aligned}$$

The form factor  $F_2^V = H_2^V$  is finite at  $\varepsilon = 0$  (this requirement explains why  $N_2^V$  (C.13) vanishes at  $u = 0$ ). We obtain

$$\begin{aligned}
 F_2^V = C_F \frac{b}{\beta_0} & \left\{ 2f_0 - 2(f_1 - 4f_0)\varepsilon \right. \\
 & - \left( f_2 + 8f_1 - \left( \frac{\pi^2}{6} + 16 \right) f_0 \right) \varepsilon^2 \\
 & - \frac{2}{3} \left( f_3 + 6f_2 + \left( \frac{\pi^2}{4} + 24 \right) f_1 + \left( \zeta_3 - \pi^2 - 48 \right) f_0 \right) \varepsilon^3 \\
 & + \dots \\
 & - b \left[ 2f_1 - \frac{25}{3}f_0 + \left( 3f_2 + \frac{74}{3}f_1 - \frac{1}{2} \left( 3\pi^2 + \frac{961}{9} \right) f_0 \right) \varepsilon \right. \\
 & \left. + \frac{1}{3} \left( 14f_3 + 86f_2 + \left( \frac{19}{2}\pi^2 + \frac{1105}{3} \right) f_1 \right. \right. \\
 & \left. \left. - \left( 46\zeta_3 + \frac{233}{6}\pi^2 + \frac{23545}{36} \right) f_0 \right) \varepsilon^2 + \dots \right] \\
 & - b^2 \left[ 2f_2 + \frac{50}{3}f_1 - \frac{1}{3} \left( 4\pi^2 + \frac{317}{3} \right) f_0 \right. \\
 & \left. + \left( 8f_3 + \frac{149}{3}f_2 + \left( 7\pi^2 + \frac{1912}{9} \right) f_1 \right. \right. \\
 & \left. \left. - \left( 44\zeta_3 + \frac{521}{18}\pi^2 + \frac{18451}{54} \right) f_0 \right) \varepsilon + \dots \right] \\
 & - b^3 \left[ 4f_3 + 25f_2 + \left( 4\pi^2 + \frac{317}{3} \right) f_1 \right. \\
 & \left. - \left( 24\zeta_3 + \frac{50}{3}\pi^2 + \frac{8609}{54} \right) f_0 + \dots \right] + \dots \Big\}. \tag{C.15}
 \end{aligned}$$

Using HPL [29,30] we have successfully reproduced all  $n_l^{L-1}\alpha_s^L$  terms with  $L = 1, 2, 3$  in  $F_{1,2}^V$  from [2].

**References**

1. W. Bernreuther, R. Bonciani, T. Gehrmann, R. Heinesch, T. Leineweber, P. Mastrolia, E. Remiddi, Two-loop QCD corrections to the heavy quark form-factors: the vector contributions. Nucl. Phys. B **706**, 245 (2005). [arXiv:hep-ph/0406046](#)
2. J.M. Henn, A.V. Smirnov, V.A. Smirnov, M. Steinhauser, Massive three-loop form factor in the planar limit. JHEP **01**, 074 (2017). [arXiv:1611.07535](#) [hep-ph]
3. M. Beneke, Renormalons. Phys. Rep. **317**, 1 (1999). [arXiv:hep-ph/9807443](#)
4. M. Beneke, V.M. Braun, Renormalons and power corrections, in *At the Frontier of Particle Physics: Handbook of QCD*, ed. by M.A. Shifman (World Scientific, Singapore, 2001), vol 3, p. 1719. [arXiv:hep-ph/0010208](#)
5. A.G. Grozin, Heavy quark effective theory. in *Springer Tracts in Modern Physics*, vol 201, Chap 8 (Springer, Berlin, 2004). [arXiv:hep-ph/0311050](#)
6. D.J. Broadhurst, Large  $N$  expansion of QED: asymptotic photon propagator and contributions to the muon anomaly, for any number of loops. Z. Phys. C **58**, 339 (1993)
7. A.G. Grozin, J.M. Henn, G.P. Korchemsky, P. Marquard, The three-loop cusp anomalous dimension in QCD and its supersymmetric extensions. JHEP **01**, 140 (2016). [arXiv:1510.07803](#) [hep-ph]
8. A.G. Grozin, Leading and next-to-leading large- $n_f$  terms in the cusp anomalous dimension and quark-antiquark potential. PoS **LL 2016**, 053 (2016). [arXiv:1605.03886](#) [hep-ph]
9. A.F. Falk, B. Grinstein, Heavy meson pair production in  $e^+e^-$  annihilation from the static quark effective theory. Phys. Lett. B **249**, 314 (1990)
10. M. Neubert, Short distance expansion of heavy quark currents. Phys. Rev. D **46**, 2212 (1992)
11. D.J. Broadhurst, A.G. Grozin, Multiloop calculations in heavy quark effective theory, in *New Computing Techniques in Physics Research*, ed. by B.H. Denby, D. Perret-Gallix (World Scientific, Singapore, 1995), p. 217. [arXiv:hep-ph/9504400](#)
12. A. Czarnecki, K. Melnikov, Threshold expansion for heavy light systems and flavor off diagonal current correlators. Phys. Rev. D **66**, 011502 (2002). [arXiv:hep-ph/0110028](#)
13. A.G. Grozin, Lectures on multiloop calculations. Int. J. Mod. Phys. A **19**, 473 (2004). [arXiv:hep-ph/0307297](#)
14. A.G. Grozin, *Lectures in QED and QCD*, Chap 10 (World Scientific, Singapore, 2007)
15. A.G. Grozin, A.V. Kotikov, HQET heavy-heavy vertex diagram with two velocities. [arXiv:1106.3912](#) [hep-ph]
16. A. Palanques-Mestre, P. Pascual, The  $1/N_f$  expansion of the  $\gamma$  and  $\beta$  functions in QED. Commun. Math. Phys. **95**, 277 (1984)
17. A.I. Davydychev, M. Yu. Kalmykov, New results for the  $\varepsilon$  - expansion of certain one-, two- and three-loop Feynman diagrams. Nucl. Phys. B **605**, 266 (2001). [arXiv:hep-th/0012189](#)
18. M. Neubert, Higher order perturbative corrections to  $b \rightarrow c$  transitions at zero recoil. Phys. Lett. B **341**, 367 (1995). [arXiv:hep-ph/9409453](#)
19. D.J. Broadhurst, A.G. Grozin, Matching QCD and HQET heavy-light currents at two loops and beyond. Phys. Rev. D **52**, 4082 (1995). [arXiv:hep-ph/9410240](#)
20. M. Beneke, V.M. Braun, Power corrections and renormalons in Drell-Yan production. Nucl. Phys. B **454**, 253 (1995). [arXiv:hep-ph/9506452](#)



21. M. Neubert, C.T. Sachrajda, Cancellation of renormalon ambiguities in the heavy quark effective theory. Nucl. Phys. B **438**, 235 (1995). [arXiv:hep-ph/9407394](#)
22. A.I. Davydychev, M. Yu. Kalmykov, Massive Feynman diagrams and inverse binomial sums. Nucl. Phys. B **699**, 3 (2004). [arXiv:hep-th/0303162](#)
23. A. Devoto, D.W. Duke, Table of integrals and formulae for Feynman diagram calculations. Riv. Nuovo Cim. **7N6**, 1 (1984), formulas (2.1.7)–(2.1.9). <http://functions.wolfram.com/ZetaFunctionsandPolylogarithms/PolyLog3/17/01/>
24. S.A. Larin, J.A.M. Vermaseren, The  $\alpha_s^3$  corrections to the Bjorken sum rule for polarized electroproduction and to the Gross-Llewellyn Smith sum rule. Phys. Lett. B **259**, 345 (1991)
25. S.A. Larin, The renormalization of the axial anomaly in dimensional regularization, in *Quarks-92*, ed. by D.Yu. Grigoriev, V.A. Matveev, V.A. Rubakov, P.G. Tinyakov (World Scientific, Singapore, 1993), p. 201. [arXiv:hep-ph/9302240](#)
26. S.A. Larin, Phys. Lett. B **303**, 113 (1993)
27. T. Huber, D. Maître, HypExp, a mathematica package for expanding hypergeometric functions around integer-valued parameters. Comput. Phys. Commun. **175**, 122 (2006). [arXiv:hep-ph/0507094](#)
28. T. Huber, D. Maître, HypExp 2, expanding hypergeometric functions about half-integer parameters. Comput. Phys. Commun. **178**, 755 (2008). [arXiv:0708.2443](#) [hep-ph]
29. D. Maître, HPL, a mathematica implementation of the harmonic polylogarithms. Comput. Phys. Commun. **174**, 222 (2006). [arXiv:hep-ph/0507152](#)
30. D. Maître, Extension of HPL to complex arguments. Comput. Phys. Commun. **183**, 846 (2012). [arXiv:hep-ph/0703052](#)
31. E. Remiddi, J.A.M. Vermaseren, Harmonic polylogarithms. Int. J. Mod. Phys. A **15**, 725 (2000). [arXiv:hep-ph/9905237](#)