

Non-simplified SUSY: $\tilde{\tau}$ -coannihilation at LHC and ILC

M. Berggren^{1,a}, A. Cakir^{1,2}, D. Krücker¹, J. List¹, I.-A. Melzer-Pellmann¹, B. Safarzadeh Samani^{1,3}, C. Seitz¹, S. Wayand⁴

¹ DESY, Notkestraße 85, 22607 Hamburg, Germany

² Department of Physics Engineering, Istanbul Technical University, 34469 Istanbul, Turkey

³ IPM, P.O. Box 19395-5531, Tehran, Iran

⁴ KIT IEKP, CS Geb. 30.23 Wolfgang-Gaede-Str. 1, 76131 Karlsruhe, Germany

Received: 19 August 2015 / Accepted: 1 February 2016 / Published online: 4 April 2016

© The Author(s) 2016. This article is published with open access at Springerlink.com

Abstract If new phenomena beyond the Standard Model will be discovered at the LHC, the properties of the new particles could be determined with data from the High-Luminosity LHC and from a future linear collider like the ILC. We discuss the possible interplay between measurements at the two accelerators in a concrete example, namely a full SUSY model which features a small $\tilde{\tau}_1$ -LSP mass difference. Various channels have been studied using the Snowmass 2013 combined LHC detector implementation in the Delphes simulation package, as well as simulations of the ILD detector concept from the Technical Design Report. We investigate both the LHC and the ILC capabilities for discovery, separation and identification of various parts of the spectrum. While some parts would be discovered at the LHC, there is substantial room for further discoveries at the ILC. We finally highlight examples where the precise knowledge about the lower part of the mass spectrum which could be acquired at the ILC would enable a more in-depth analysis of the LHC data with respect to the heavier states.

1 Introduction

Supersymmetry (SUSY) [1–6] is one of the best motivated theories beyond the Standard Model (SM). In the past, at LEP, Tevatron and the early LHC, results were mainly interpreted in the constrained minimal supersymmetric extension of the Standard Model (CMSSM) [7,8], while later LHC search results are mostly presented in a simplified model approach [9–11]. Simplified models offer more flexibility for comparing to predictions of different theoretical models, though they might not describe reality well, as they usually contain only one decay with 100% branching ratio. In contrast, a real SUSY signal might comprise a large spectrum

of SUSY particles and the higher states of the spectrum may have many decay modes leading to potentially long decay chains. This means that the simplified approach in general does not apply beyond the direct production of the next-to-lightest SUSY particle (NLSP) and the interpretation of exclusion limits formulated in the simplified approach is non-trivial. Furthermore, also several production channels may be open, making SUSY the most serious background to itself. This becomes especially relevant for interpreting a future discovery of a non-SM signal.

In this paper, we investigate how a well-motivated full-spectrum R -parity [12] conserving SUSY model could lead to signals beyond the SM at the LHC and at a future linear collider like the ILC. A key feature of the investigated models is a $\tilde{\tau}$ -NLSP with a small mass difference of about 10 GeV to the $\tilde{\chi}_1^0$, the lightest SUSY particle (LSP) of the model. Such scenarios were favoured by fits to all pre-LHC experimental data within the CMSSM [13], since the small mass difference allows one to match the observed Dark Matter relic density via a sizeable $\tilde{\tau}$ -coannihilation contribution. The $\tilde{\tau}$ -coannihilation remains among the favoured regions of parameter space in the CMSSM and in the Non-Universal Higgs Mass Model (NUHM2) when including LHC data [14].

Within the context of constrained models, the masses of the fermion-partner particles (sfermions) in kinematic reach of the ILC are excluded with high confidence. However, this exclusion is in most cases based on the strongly interacting sector, which in constrained models is coupled to the electroweak sector by GUT-scale mass unification. Without the restriction of *mass* unification, the part of the spectrum which is of interest to electroweak and flavour precision observables as well as dark matter, i.e. which is decisive for the fit outcome, is not at all in conflict with LHC results. This applies in particular to the $\tilde{\tau}_1$ with a small mass difference from the

^a e-mail: mikael.berggren@desy.de

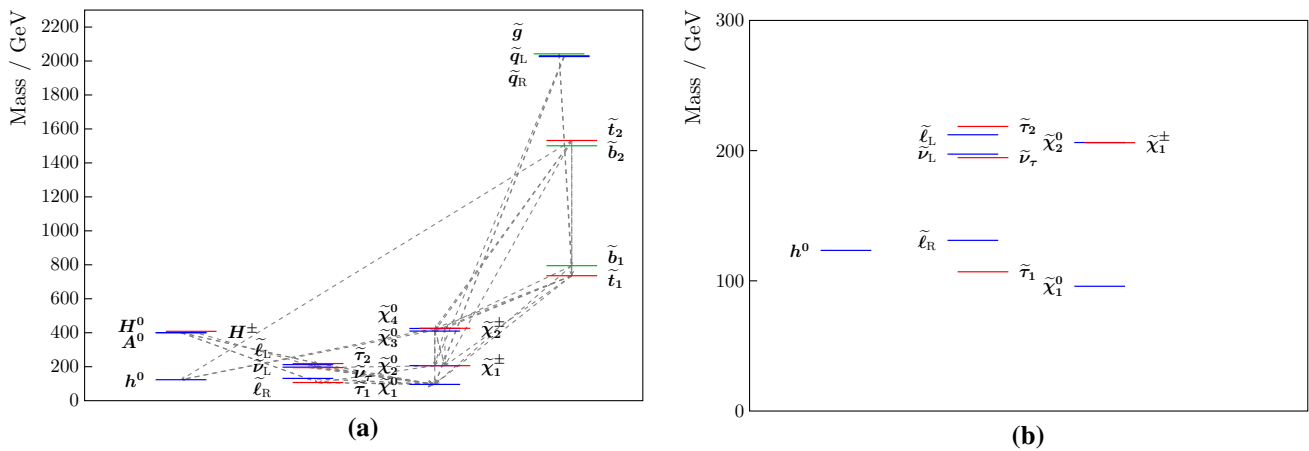


Fig. 1 Full spectrum of STC8 and decay modes with a branching fraction of at least 10 % (a). The lower part of the spectrum of the STC scenarios, which features $M_{\tilde{\tau}_1} - M_{\tilde{\chi}_1^0} \approx 10$ GeV (b)

LSP: although first limits on direct $\tilde{\tau}$ pair production from the LHC have been presented [15, 16], they rapidly lose sensitivity if the $\tilde{\tau}$ is not degenerate with the \tilde{e} and $\tilde{\mu}$, and has a small mass difference from the LSP. In fact, the current limit on the $\tilde{\tau}$ without other assumptions on the mass difference from the LSP than that it is larger than m_τ nor with any assumptions on the $\tilde{\tau}$ mixing angle comes from the DELPHI experiment at LEP and is $M_{\tilde{\tau}} > 26.3$ GeV [17, 18]. Due the key feature of a small $\tilde{\tau}$ -LSP mass difference and the resulting sizeable $\tilde{\tau}$ -coannihilation contribution the series of CP -conserving model points considered here is called STC [19].

Motivated by solving the naturalness problem within the general MSSM [20, 21], the SUSY partner particles of third-generation quarks in STC have been chosen to be lighter than those of the first- and second-generation squarks. When the first- and second-generation squarks and the gluino are rather heavy, $\gtrsim 2$ TeV, the size of the total SUSY cross section at the LHC strongly depends on the mass of the lightest top squark. We therefore consider in particular two model points, called STC8 and STC10, whose physical spectra differ only by the mass parameter of the partners of the right-handed third-generation squarks at a scale of 1 TeV. The mass parameter of the right-handed third-generation squarks is set to 800 and 1000 GeV, resulting in physical masses of the top squark of $m_{\tilde{t}_1} \approx 740$ GeV and $m_{\tilde{t}_1} \approx 940$ GeV, and of the bottom squark of $m_{\tilde{b}_1} \approx 800$ GeV and $m_{\tilde{b}_1} \approx 1000$ GeV, respectively.

$\tilde{\tau}$ -coannihilation at the LHC has been studied before either in context of mSugra, relying on rather light gluinos with a mass of about 850 GeV [22–24], or more recently the very specific decay chain of $\tilde{t}_1 \rightarrow \tilde{b}\tilde{\tau}_1\tilde{\nu}_\tau$ [25], which has a branching ratio of less than 10 % in the full model investigated here, cf. Sect. 2.

Figure 1a introduces the full mass spectrum of the benchmark scenario STC8, while Fig. 1b zooms into the part of the

spectrum accessible at the ILC with $E_{\text{cms}} = 500$ GeV. The lightest Higgs boson features SM-like branching ratios and has a mass in agreement with the LHC discovery within the typical theoretical uncertainty of ± 3 GeV on MSSM Higgs-boson mass calculations.

The dashed lines in Fig. 1a indicate those decay chains of the various sparticles which have branching fractions of at least 10 %. The grey-scale of the lines indicates the size of the branching ratio. Only very few particles, namely the first and second generation squarks, the sneutrinos and the lighter set of charged sleptons have decay modes with 100 % branching ratio.

In particular the top and bottom squarks, but also the superpartners of the uncoloured bosons, called electroweakinos in the following, have various decay modes, none of them with a branching ratio larger than 50 %, but many with less than 10 %. This plethora of decay modes makes it challenging to separate the various production modes and identify each sparticle.

The final goals of this study comprise the following questions for both LHC and the ILC in the example of the STC scenarios:

- Which signature will lead to the first discovery of a discrepancy from the SM? How much integrated luminosity and operation time will be needed?
- Which other signatures will be observable?
- Which production modes of which particles contribute to this signal?
- Can we tell how many particles are involved?
- Which observables (masses, BRs, cross sections) can be measured and with which precision?
- Can we show that it is SUSY?
- Can the $\tilde{\chi}_1^0$ be identified as a Dark Matter particle?

In the next section, we will discuss the benchmark model and its phenomenology in more detail. In Sect. 3 we will review its possible discovery in different analyses at LHC and summarise the obtained simulation results, while we will do the same in Sect. 4 for the ILC case. In Sect. 5, we employ the combined results from LHC and ILC in order to investigate the questions raised above, before concluding in Sect. 6.

2 Collider phenomenology of the STC scenarios

In this section we present the parameters of the benchmark models in more detail, summarising the masses of the most important SUSY particles, their production cross sections and branching ratios. Based on this information, the phenomenology at the LHC and ILC will be discussed.

A corner-stone of SUSY is that the couplings of the standard-model particles and their supersymmetric partners are the same, so that on tree-level the production cross sections only depend on the masses and mixing angles of the produced and exchanged sparticles.

In the case of the LHC studies, we assumed $E_{\text{cms}} = 14 \text{ TeV}$ and an integrated luminosity up to 300 fb^{-1} . We also consider the high-luminosity upgrade of the LHC, the HL-LHC, assumed also to be running at $E_{\text{cms}} = 14 \text{ TeV}$, but delivering a total integrated luminosity of 3 ab^{-1} .

For the ILC studies, the conditions presented in the Technical Design Report (TDR) [26] were used. This means that the bulk of the data would be recorded at $E_{\text{cms}} = 500 \text{ GeV}$, with an integrated luminosity of 250 fb^{-1} per year. We extrapolate our results to the running scenarios recently published by the Joint Working Group on ILC Beam Parameters [27]. Since the ILC beam energy is tunable, we also consider the option of running at different, lower energies, and performing energy scans around thresholds. Very important are the opportunities offered by the electron and positron beam polarisation, for which the baseline design of the ILC foresees absolute values of 80 and 30 %, respectively. As SUSY is a chiral theory, the possibility to have polarised initial conditions is a very powerful tool to disentangle different states, to enhance signal while reducing SM background, and to study helicity-dependent predictions of the theory.

2.1 Mass spectrum and decay modes

The masses of the most important sparticles in the benchmark points STC8 and STC10 are listed in Table 1. The two models differ mainly in the masses of the lighter bottom squark (\tilde{b}_1) and the lighter top squark (\tilde{t}_1). These sparticles are important for analyses at the LHC, where both would be accessible at the chosen masses and will be searched for with dedicated analyses. A bottom squark with a mass as in the STC8 model is on the edge of already being detected at the LHC with a

Table 1 Sparticle masses for the models STC8 and STC10. The mass of the first two generation squarks (\tilde{q}) varies by a few GeV, their average mass is listed. We use $\tilde{\ell}$ when we refer to the first and second generation sleptons, while the third generation is listed separately

Sparticle	Mass (GeV)		Sparticle	Mass (GeV)	
	STC8	STC10		STC8	STC10
\tilde{b}_1	795	1008	$\tilde{\tau}_1$	107	107
\tilde{b}_2	1500	1500	$\tilde{\tau}_2$	219	219
\tilde{t}_1	736	944	$\tilde{\nu}_\tau$	196	196
\tilde{t}_2	1532	1537	$\tilde{\chi}_1^0$	96	96
\tilde{g}	2042	2042	$\tilde{\chi}_2^0$	206	206
\tilde{q}	2028	2028	$\tilde{\chi}_3^0$	410	410
$\tilde{\ell}_L$	212	212	$\tilde{\chi}_4^0$	425	426
$\tilde{\ell}_R$	131	131	$\tilde{\chi}_1^\pm$	206	206
$\tilde{\nu}_L$	198	198	$\tilde{\chi}_2^\pm$	426	427

Table 2 Branching ratios (BR) of the gluinos and the third generation squarks in the models STC8 and STC10. Only branching ratios above 1 % are shown

Decay	BR (%)		Decay	BR (%)	
	STC8	STC10		STC8	STC10
$\tilde{g} \rightarrow \tilde{t}_1$	37.8	35.5	$\tilde{g} \rightarrow \tilde{b}\tilde{b}_1$	39.1	36.9
$\tilde{g} \rightarrow \tilde{t}_2$	11.5	13.8	$\tilde{g} \rightarrow \tilde{b}\tilde{b}_2$	11.5	13.7
$\tilde{t}_1 \rightarrow \tilde{t}\tilde{\chi}_1^0$	13.2	9.9	$\tilde{b}_1 \rightarrow \tilde{b}\tilde{\chi}_1^0$	58.2	51.4
$\tilde{t}_1 \rightarrow \tilde{t}\tilde{\chi}_2^0$	4.5	4.3	$\tilde{b}_1 \rightarrow \tilde{b}\tilde{\chi}_2^0$	3.1	3.0
$\tilde{t}_1 \rightarrow \tilde{t}\tilde{\chi}_3^0$	22.4	24.3	$\tilde{b}_1 \rightarrow \tilde{b}\tilde{\chi}_3^0$	10.7	12.1
$\tilde{t}_1 \rightarrow \tilde{t}\tilde{\chi}_4^0$	12.0	15.1	$\tilde{b}_1 \rightarrow \tilde{b}\tilde{\chi}_4^0$	9.2	10.5
$\tilde{t}_1 \rightarrow \tilde{b}\tilde{\chi}_1^+$	10.8	9.8	$\tilde{b}_1 \rightarrow \tilde{t}\tilde{\chi}_1^-$	5.1	5.2
$\tilde{t}_1 \rightarrow \tilde{b}\tilde{\chi}_2^+$	37.1	36.5	$\tilde{b}_1 \rightarrow \tilde{t}\tilde{\chi}_2^-$	13.7	17.9

centre-of-mass energy of 8 TeV and an integrated luminosity of 20 fb^{-1} [28, 29], provided that the branching ratio of the direct decay $\tilde{b} \rightarrow \tilde{b}\tilde{\chi}_1^0$ is 100 %. However, this is usually not the case for a full-spectrum model like the one we investigate here, unless the \tilde{b} is the NLSP. In particular, in our scenarios, the branching fraction of this decay is about 60 % in STC8 and about 50 % in STC10, as listed in Table 2. The analogous decay of the \tilde{t} has a branching fraction of only about 10 %. This will make it very hard to select a \tilde{t} sample in a specific decay mode as a prerequisite to identify a kinematic edge.

The actual masses of the $\tilde{\ell}_L$ and $\tilde{\mu}_L$ in STCx have been excluded by the ATLAS experiment for the case of 100 % branching ratio for the direct decay to the corresponding lepton and the LSP [30]. As can be seen in Table 3, the STCx branching ratios for these decays are quite close to 100 %, thus this particular part of the spectrum is most likely excluded. It should be noted, however, that this large BR is a special case due to the small mass difference of only 6 GeV between the $\tilde{\ell}_L$ and the $\tilde{\chi}_1^\pm / \tilde{\chi}_2^0$, which leads to a strong phase

Table 3 Branching ratios (BR) of the sleptons in the models STC8 and STC10. We use $\tilde{\ell}$ when we refer to the first and second generation sleptons, while the third generation is listed separately

Decay	BR (%)		Decay	BR (%)	
	STC8	STC10		STC8	STC10
$\tilde{\ell}_R \rightarrow l\tilde{\chi}_1^0$	100	100	$\tilde{\tau}_1 \rightarrow \tau\tilde{\chi}_1^0$	100	100
$\tilde{\ell}_L \rightarrow l\tilde{\chi}_1^0$	95.3	95.4	$\tilde{\tau}_2 \rightarrow \tau\tilde{\chi}_1^0$	81.3	81.5
$\tilde{\ell}_L \rightarrow l\tilde{\chi}_2^0$	1.7	1.6	$\tilde{\tau}_2 \rightarrow \tau\tilde{\chi}_2^0$	3.4	3.4
$\tilde{\ell}_L \rightarrow \nu_l\tilde{\chi}_1^\pm$	3.0	3.0	$\tilde{\tau}_2 \rightarrow \nu_\tau\tilde{\chi}_1^\pm$	6.2	6.2
			$\tilde{\tau}_2 \rightarrow \tilde{\tau}_1 Z$	9.1	9.0
			$\tilde{\nu}_\tau \rightarrow \nu_\tau\tilde{\chi}_1^0$	94.2	94.6
			$\tilde{\nu}_\tau \rightarrow \tilde{\tau}_1 W$	5.8	5.4

space suppression for the cascade decays $\tilde{\ell}_L \rightarrow l\tilde{\chi}_2^0$ and $\tilde{\ell}_L \rightarrow \nu_l\tilde{\chi}_1^\pm$. With increasing mass difference, the branching ratio for the direct decay $\tilde{\ell}_L \rightarrow l\tilde{\chi}_1^0$ drops rapidly in favour of these cascade decays. Therefore, the results of this study remain highly relevant in the broader picture. Cases where the specific mass and branching ratio combination of the $\tilde{\ell}_L$ plays a role will be pointed out.

The STCx masses of the right-handed sleptons are by far not excluded, although their BR to lepton and LSP is 100%. This has to be attributed to their smaller mass difference from the LSP, which leads to softer leptons and thus a significantly smaller acceptance. Among the other slepton decays listed in Table 3, it is interesting to note that the $\tilde{\nu}_\tau$ features 5% of visible decays to $\tilde{\tau}_1 W$.

Table 4 lists the decay modes of the electroweakinos. The largest branching ratios of about 70% occur for $\tilde{\chi}_1^\pm \rightarrow \tilde{\tau}_1\nu_\tau$ and $\tilde{\chi}_2^0 \rightarrow \tilde{\tau}_1\tau$, both always followed by $\tilde{\tau}_1 \rightarrow \tau\tilde{\chi}_1^0$. Since the $\tilde{\tau}_1$ NLSP is only about 10 GeV more massive than the $\tilde{\chi}_1^0$ LSP, the τ leptons from the $\tilde{\tau}_1$ are typically very soft, making these decays challenging to detect. Although the mass splitting between $\tilde{\chi}_2^0$ ($\tilde{\chi}_1^\pm$) and LSP is large enough to allow decays to on-shell Z (W^\pm) bosons, these decay modes occur only at the level of a few percent due to the presence of the light sleptons. Electroweakino production with cascade decays via sleptons has been searched for by ATLAS [15, 16] and CMS [31]. While these searches are sensitive to the mass ranges studied here if either (a) decays proceed democratically via all three lepton flavours or (b) exclusively via a $\tilde{\tau}$, but with a mass half-way between chargino-1/neutralino-2 and the LSP, they rapidly lose sensitivity if the decays proceed predominantly via a light $\tilde{\tau}_1$ with a small mass difference, as is the case here. Thus, neither the light sleptons nor the $\tilde{\tau}_2$ of the STC scenarios have been probed by the LHC to date.

The heavier neutralinos $\tilde{\chi}_3^0$ and $\tilde{\chi}_4^0$, however, feature sizeable branching ratios to $\tilde{\chi}_1^\pm W^\pm$ of about 60 and 50%, respectively, while the $\tilde{\chi}_2^\pm$ decays most frequently to $\tilde{\chi}_2^0 W^\pm$, $\tilde{\chi}_1^\pm Z$ and $\tilde{\chi}_1^0 h^0$ with branching fractions of about 30, 25 and 20%,

Table 4 Branching ratios (BR) of the charginos and neutralinos in the models STC8 and STC10

Decay	BR (%)		Decay	BR (%)	
	STC8	STC10		STC8	STC10
$\tilde{\chi}_1^+ \rightarrow \tilde{\mu}_R^+ \nu_\mu$	0.2	0.2	$\tilde{\chi}_2^0 \rightarrow \tilde{e}_R^\pm e^\mp$	2.1	2.1
$\tilde{\chi}_1^+ \rightarrow \tilde{\tau}_1 \nu_\tau$	67.9	67.5	$\tilde{\chi}_2^0 \rightarrow \tilde{\mu}_R^\pm \mu^\mp$	2.1	2.2
$\tilde{\chi}_1^+ \rightarrow \tilde{\nu}_e e^+$	6.6	6.8	$\tilde{\chi}_2^0 \rightarrow \tilde{\tau}_1^\pm \tau^\mp$	73.2	72.9
$\tilde{\chi}_1^+ \rightarrow \tilde{\nu}_\mu \mu^+$	6.6	6.8	$\tilde{\chi}_2^0 \rightarrow \tilde{\nu}_e \nu_e$	5.7	5.8
$\tilde{\chi}_1^+ \rightarrow \tilde{\nu}_\tau \tau^+$	11.3	11.5	$\tilde{\chi}_2^0 \rightarrow \tilde{\nu}_\mu \nu_\mu$	5.7	5.8
$\tilde{\chi}_1^+ \rightarrow \tilde{\chi}_1^0 W^+$	7.2	7.0	$\tilde{\chi}_2^0 \rightarrow \tilde{\nu}_\tau \nu_\tau$	9.5	9.7
			$\tilde{\chi}_2^0 \rightarrow \tilde{\chi}_1^0 Z$	1.2	1.1
$\tilde{\chi}_2^+ \rightarrow \tilde{e}_L^+ \nu_e$	4.6	4.6	$\tilde{\chi}_3^0 \rightarrow \tilde{\chi}_1^\pm W^\mp$	58.3	58.4
$\tilde{\chi}_2^+ \rightarrow \tilde{\mu}_L^+ \nu_\mu$	4.6	4.6	$\tilde{\chi}_3^0 \rightarrow \tilde{\chi}_1^0 Z$	10.3	10.2
$\tilde{\chi}_2^+ \rightarrow \tilde{\tau}_2 \nu_\tau$	5.1	5.1	$\tilde{\chi}_3^0 \rightarrow \tilde{\chi}_2^0 Z$	23.2	23.2
$\tilde{\chi}_2^+ \rightarrow \tilde{\nu}_e e^+$	1.7	1.7	$\tilde{\chi}_3^0 \rightarrow \tilde{\chi}_1^0 h^0$	2.2	2.2
$\tilde{\chi}_2^+ \rightarrow \tilde{\nu}_\mu \mu^+$	1.7	1.7	$\tilde{\chi}_3^0 \rightarrow \tilde{\chi}_2^0 h^0$	1.2	1.2
$\tilde{\chi}_2^+ \rightarrow \tilde{\nu}_\tau \tau^+$	2.5	2.5	$\tilde{\chi}_4^0 \rightarrow \tilde{\tau}_2^\pm \tau^\mp$	3.2	3.2
$\tilde{\chi}_2^+ \rightarrow \tilde{\chi}_1^0 W^+$	7.8	7.7	$\tilde{\chi}_4^0 \rightarrow \tilde{\nu}_e \nu_e$	4.3	4.3
$\tilde{\chi}_2^+ \rightarrow \tilde{\chi}_2^0 W^+$	28.3	28.3	$\tilde{\chi}_4^0 \rightarrow \tilde{\nu}_\mu \nu_\mu$	4.3	4.3
$\tilde{\chi}_2^+ \rightarrow \tilde{\chi}_1^+ Z$	25.0	25.0	$\tilde{\chi}_4^0 \rightarrow \tilde{\nu}_\tau \nu_\tau$	4.3	4.3
$\tilde{\chi}_2^+ \rightarrow \tilde{\chi}_1^0 h^0$	18.8	18.8	$\tilde{\chi}_4^0 \rightarrow \tilde{\chi}_1^\pm W^\mp$	51.9	52.0
			$\tilde{\chi}_4^0 \rightarrow \tilde{\chi}_1^0 Z$	2.3	2.2
			$\tilde{\chi}_4^0 \rightarrow \tilde{\chi}_2^0 Z$	2.0	2.0
			$\tilde{\chi}_4^0 \rightarrow \tilde{\chi}_1^0 h^0$	6.7	6.7
			$\tilde{\chi}_4^0 \rightarrow \tilde{\chi}_2^0 h^0$	15.8	15.9

respectively. Thus, although the $\tilde{\tau}_1$ is the NLSP, in particular the heavier electroweakinos have sizeable branching fractions to other final states than the notoriously difficult τ -lepton. This also means that signatures with electrons or muons in the final state can originate either from slepton or electroweakino production.

2.2 Production cross sections at the LHC

The cross sections for the main production processes of STC8 at the LHC are given in Table 5 for $E_{\text{cms}} = 14$ TeV, while Table 6 lists the cross sections which are considerably different in STC10. All cross sections have been calculated with PROSPINO2 [32, 33]. The particles produced with the largest production cross sections are the neutralinos and charginos. Nevertheless, their observation at the LHC is challenging due to their various decay chains via the $\tilde{\tau}_1$, which lead to very soft τ leptons due to the small mass difference between the $\tilde{\tau}_1$ and the LSP. The cross sections for direct selectron and smuon pair production is sizeable as well, such that these could be discovered in final states with two leptons and missing transverse energy.

In addition, in the direct decay $\tilde{b}_1 \rightarrow b\tilde{\chi}_1^0$ leads to a characteristic edge in the contranverse mass distribution [34, 35],

Table 5 Production cross sections for the benchmark model STC8 at LHC with $E_{\text{cms}} = 14 \text{ TeV}$. The leading order (LO), next-to-leading order (NLO) and the K -factor between LO and NLO are shown

Process	LO (fb)	NLO (fb)	$K_{\text{NLO/LO}}$
$pp \rightarrow \tilde{g} \tilde{g}$	0.18	0.67	3.58
$pp \rightarrow \tilde{q} \tilde{q}$	5.1	6	1.16
$pp \rightarrow \tilde{q} \tilde{g}$	3	5.4	1.80
$pp \rightarrow \tilde{q} \tilde{q}$	16.4	25.4	1.54
$pp \rightarrow \tilde{b}_1 \tilde{b}_1$	22.8	38.3	1.67
$pp \rightarrow \tilde{b}_2 \tilde{b}_2$	0.2	0.37	1.90
$pp \rightarrow \tilde{t}_1 \tilde{t}_1$	37.7	62.7	1.66
$pp \rightarrow \tilde{t}_2 \tilde{t}_2$	0.16	0.31	1.94
$pp \rightarrow \tilde{\ell}_L \tilde{\ell}_L$	15.5	19.4	1.25
$pp \rightarrow \tilde{\ell}_R \tilde{\ell}_R$	32.4	41.8	1.29
$pp \rightarrow \tilde{\nu}_e \tilde{\nu}_e$	19.4	24.6	1.26
$pp \rightarrow \tilde{\ell} \tilde{\nu}_\ell$	63.3	79.6	1.26
$pp \rightarrow \tilde{\tau}_1 \tilde{\tau}_1$	59.1	77.4	1.30
$pp \rightarrow \tilde{\tau}_2 \tilde{\tau}_2$	11.7	14.6	1.24
$pp \rightarrow \tilde{\tau}_1 \tilde{\tau}_2$	34.7	44.7	1.28
$pp \rightarrow \tilde{\nu}_\tau \tilde{\nu}_\tau$	20.4	25.9	1.26
$pp \rightarrow \tilde{\tau} \tilde{\nu}_\tau$	73.9	93.6	1.26
$pp \rightarrow \tilde{\chi}_1^0 \tilde{\chi}_1^0$	0.34	0.42	1.25
$pp \rightarrow \tilde{\chi}_i^0 \tilde{\chi}_j^0$ (except $\tilde{\chi}_1^0 \tilde{\chi}_1^0$)	15.8	19.6	1.24
$pp \rightarrow \tilde{\chi}_1^\pm \tilde{\chi}_1^\pm$	585	747	1.28
$pp \rightarrow \tilde{\chi}_k^\pm \tilde{\chi}_m^\pm$ (except $\tilde{\chi}_1^\pm \tilde{\chi}_1^\pm$)	17.3	20.2	1.17
$pp \rightarrow \tilde{\chi}_1^0 \tilde{\chi}_1^\pm$	10.0	12.9	1.29
$pp \rightarrow \tilde{\chi}_1^0 \tilde{\chi}_2^\pm$	1.07	1.36	1.27
$pp \rightarrow \tilde{\chi}_2^0 \tilde{\chi}_1^\pm$	1170	1492	1.28
$pp \rightarrow \tilde{\chi}_2^0 \tilde{\chi}_2^\pm$	3.51	4.33	1.23
$pp \rightarrow \tilde{\chi}_3^0 \tilde{\chi}_1^\pm$	6.10	7.63	1.25
$pp \rightarrow \tilde{\chi}_3^0 \tilde{\chi}_2^\pm$	22.0	27.0	1.25
$pp \rightarrow \tilde{\chi}_4^0 \tilde{\chi}_1^\pm$	3.45	4.25	1.25
$pp \rightarrow \tilde{\chi}_4^0 \tilde{\chi}_2^\pm$	24.4	29.8	1.25

Table 6 Cross sections of the processes in the model STC10 at LHC with $E_{\text{cms}} = 14 \text{ TeV}$. Only cross sections significantly different from those of STC8 given in Table 5 are listed. The leading order (LO), next-to-leading order (NLO) and the K -factor between LO and NLO are shown

Process	LO (fb)	NLO (fb)	$K_{\text{NLO/LO}}$
$pp \rightarrow \tilde{b}_1 \tilde{b}_1$	4.4	7.7	1.74
$pp \rightarrow \tilde{t}_1 \tilde{t}_1$	7.08	12.0	1.72

which depends on the masses of \tilde{b} and $\tilde{\chi}_1^0$. This edge is of high interest for determining the parameters of the model and could be observed if the direct decay mode can be selected with sufficiently high purity. In STC8, the cross section for \tilde{b}_1 pair production is sizeable, which gives hope to be able to observe the edge. Due to the larger \tilde{b}_1 mass in STC10, the

edge position is in a region with lower SM backgrounds, but on the other hand the cross section is lower. Thus, observing the edge will be challenging. Due to the rapidly decreasing cross section, we expect that bottom-squarks with masses well beyond 1 TeV cannot be seen at the LHC.

The top squark with masses as chosen here will also be produced at the LHC, but it will be difficult to distinguish direct top-squark production from its production in the decay of the gluino (\tilde{g}). The masses of the heavier coloured sparticles, the gluino and the squarks of the first and second generation (\tilde{q}), are chosen such that they will also be produced at reasonably rates at the LHC, and dedicated analyses will be able to detect them with the full luminosity delivered by the LHC.

The by far largest cross section in electroweakino production, above 1 pb, is obtained for $\tilde{\chi}_2^0 \tilde{\chi}_1^\pm$ production. This channel will therefore certainly be discovered at the LHC, by a multi-lepton search. The cross sections for other electroweak processes is lower, the largest cross section for neutralino-neutralino production appears for $\tilde{\chi}_3^0 \tilde{\chi}_4^0$ production with almost 14 fb. While the lighter electroweakinos could be well discovered at the ILC, the LHC searches would profit from the exact mass and cross-section information of these in order to specifically search for the heavier electroweakinos that would not be accessible at the ILC at a centre-of-mass energy of 500 GeV. One example is the production of $\tilde{\chi}_2^\pm$, which will be discussed later.

2.3 Production cross sections at the ILC

The key feature of the STCx models for the ILC is the mass spectrum of the sleptons and the lighter electroweakinos, and thus at tree-level STC8 and STC10 are identical from the ILC point-of-view. Figure 2 shows the polarised cross sections¹ for various STC processes in e^+e^- collisions as a function of the centre-of-mass energy. In the part kinematically accessible at the ILC, they do not differ among the two models. While a few processes open up already below $E_{\text{cms}} = 250 \text{ GeV}$ and thus would be accessible even when running near the Higgs-strahlung threshold, a plethora of thresholds of slepton, sneutrino and electroweakino production appears between $E_{\text{cms}} = 250$ and 500 GeV. In most cases, these can be observed and even distinguished from each other in the clean ILC environment. The ability to operate at any desired centre-of-mass energy between 200 and 500 GeV (or even 1 TeV) and to switch the sign of the beam polarisations are unique tools to identify each of these processes. The low SM background levels allow in many cases a full and unique kinematic reconstruction of cascade decays.

¹ Here, and in the following, \mathcal{P}_{p^-, p^+} denotes the beam-polarisation configuration $\mathcal{P}(e^-, e^+) = (p^-, p^+)$, with p^- and p^+ given in percent [for brevity fully left (right) handed beams are denoted by L(R)].

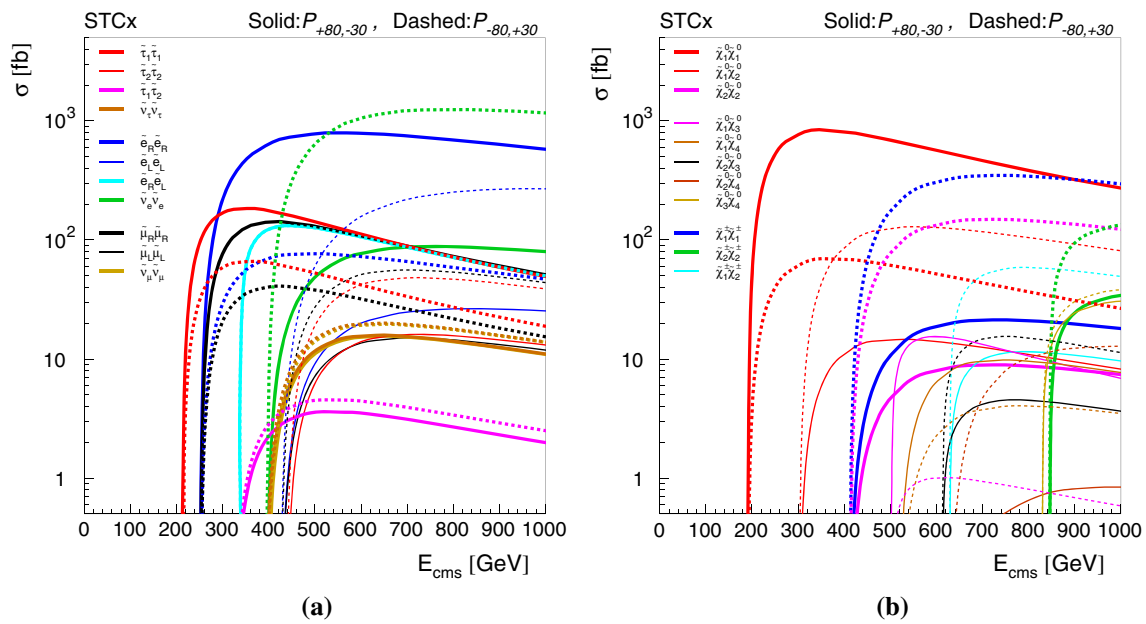


Fig. 2 STC8 cross sections for sparticle production as a function of E_{cms} at the ILC, separated in **a** sfermion production, and **b** electroweakino production

Table 7 Production cross sections for the benchmark model STC8 at the ILC, for different degrees of beam polarisation. The ILC TDR beam spectrum is used with a nominal centre-of-mass energy is 500 GeV. All channels accessible at this energy are shown. Channels with no detectable final states are marked with (*). In addition, the cross section for $e^+e^- \rightarrow \tilde{e}_R^+ \tilde{e}_L^- (\tilde{e}_L^+ \tilde{e}_R^-)$ is 335.85 fb for $\mathcal{P}_{R,R} (\mathcal{P}_{L,L})$; for all other processes the cross section vanishes for both $\mathcal{P}_{L,L}$ and $\mathcal{P}_{R,R}$

Process	$\mathcal{P}_{R,L}$ (fb)	$\mathcal{P}_{L,R}$ (fb)	$\mathcal{P}_{+80,-30}$ (fb)	$\mathcal{P}_{-80,+30}$ (fb)
$e^+e^- \rightarrow \tilde{\chi}_1^0 \tilde{\chi}_1^0 (*)$	1203.57	34.47	705.29	62.29
$e^+e^- \rightarrow \tilde{\chi}_1^\pm \tilde{\chi}_1^\mp$	0.38	259.37	9.30	151.74
$e^+e^- \rightarrow \tilde{\chi}_1^0 \tilde{\chi}_2^0$	11.97	206.67	14.24	121.32
$e^+e^- \rightarrow \tilde{\chi}_2^0 \tilde{\chi}_2^0$	0.03	115.71	4.07	67.69
$e^+e^- \rightarrow \tilde{e}_L \tilde{e}_L$	8.01	84.07	7.63	49.46
$e^+e^- \rightarrow \tilde{e}_R \tilde{e}_R$	1313.73	52.32	770.36	76.59
$e^+e^- \rightarrow \tilde{\mu}_L \tilde{\mu}_L$	8.05	39.11	6.08	23.16
$e^+e^- \rightarrow \tilde{\mu}_R \tilde{\mu}_R$	222.47	52.23	131.97	38.34
$e^+e^- \rightarrow \tilde{\nu}_\tau \tilde{\nu}_\tau$	16.93	22.02	10.67	13.47
$e^+e^- \rightarrow \tilde{\nu}_e \tilde{\nu}_e (*)$	15.86	973.97	43.37	570.33
$e^+e^- \rightarrow \tilde{\nu}_\mu \tilde{\nu}_\mu (*)$	15.93	20.71	10.04	12.67
$e^+e^- \rightarrow \tilde{\tau}_1 \tilde{\tau}_1$	244.33	77.61	145.65	53.95
$e^+e^- \rightarrow \tilde{\tau}_1 \tilde{\tau}_2$	5.46	7.10	3.44	4.34
$e^+e^- \rightarrow \tilde{\tau}_2 \tilde{\tau}_2$	7.14	26.10	5.09	15.52
$e^+e^- \rightarrow \tilde{e}_L \tilde{e}_R$	0.00	0.00	127.62	127.62

In particular at the ILC running at $E_{\text{cms}} = 500$ GeV, all sleptons and the lighter set of electroweakinos of the STC8 scenarios can be produced. $\tilde{\chi}_3^0$ and $\tilde{\chi}_4^0$ become accessible in associated production around $E_{\text{cms}} = 600$ GeV. Pair production of $\tilde{\chi}_2^\pm$ appears at around $E_{\text{cms}} = 850$ GeV. At this energy, also pair-production of $\tilde{\chi}_3^0$ and $\tilde{\chi}_4^0$ is possible; however because these two states are mainly Higgsino, the rate is very low. At $E_{\text{cms}} = 500$ GeV, the cross sections are sizeable, as can be seen in Table 7. Only one of the kinematically allowed processes, $e^+e^- \rightarrow \tilde{\tau}_1 \tilde{\tau}_2$, would have a production cross section below 10 fb for both beam-polarisation configurations.

The total SUSY cross section is well over 1 pb in both cases.

3 LHC projections

The searches for new physics beyond the Standard Model at the LHC are either kept as inclusive as possible, or tailored to search for a specific scenario of new physics. We follow here a representative selection of typical studies, starting with search for an excess of large hadronic activity caused by the heavy new particles, in connection with large missing

transverse energy due to the escaping lightest SUSY particles (LSPs). Such searches have been performed by both the ATLAS and the CMS Collaborations based on data taken at 7 and 8 TeV with and without b-tagging requirements [36–49] in the full-hadronic final state. Exclusive searches for top and bottom squarks rely on the use of special variables, as the production cross section for third-generation sparticles is about an order of magnitude lower than the one for first- or second-generation squarks of similar mass and the signal is hidden below a large background by SM top-quark production. We discuss here a full-hadronic search for direct bottom-squark production, similar to searches performed by both the ATLAS and the CMS Collaborations based on data taken at 7 and 8 TeV [28, 29, 50], where it is assumed that the pair-produced bottom-squark decays directly to a bottom quark and the lightest neutralino which is the LSP. Furthermore, we present the results of a search for direct top squark production in the single-lepton channel, also similar to previously published analyses by CMS and ATLAS [51–53]. Multi-lepton searches are sensitive to decays of the electroweak-produced sparticles, e.g. in the case of neutralino-chargino production, as discussed for 7 and 8 TeV by the ATLAS and CMS collaborations [31, 54, 55]. The recent results are interpreted in the SMS approach which reflects a best case scenario, assuming a branching ratio of 100% for one specific decay. In nature the 100% are not realised, as also shown for our benchmark models in Table 2. For such cases the bounds for the chargino and neutralinos are weaker. We also present the results of a multi-lepton search and the possible interpretation in the case of a signal by the discussed model. We note that a large variety of search modes for 3rd generation squarks has also been discussed in phenomenological papers, including for instance [56–60]. However, these are not directly applicable to the scenario under study in this paper.

The detector response is simulated using the DELPHES 3.0.9 fast simulation program [61], both for signal and background events. This DELPHES version has been used for the Snowmass studies and is able to include pile-up from minimum bias collisions that are randomly selected from a file containing inelastic proton–proton interactions produced with PYTHIA6 [62]. These events are randomly distributed along the beam axis (also called z -axis) according to a Gaussian distribution with a width of 5 cm. If the z -position of a pile-up vertex is less than the 1 mm from the primary vertex (corresponding to the resolution), the pile-up interaction is not separated from the primary vertex, and all particles from both the pile-up and the primary interactions are included in the object reconstruction. For pile-up interactions with a larger z -vertex difference from the primary vertex, the subtraction of charged pile-up particles within the tracker volume is applied with an efficiency of unity. The FastJet area method [63] is applied to correct measurements of jets and energy in the calorimeters for the contribution from neutral

pile-up particles and charged pile-up particles outside the tracker acceptance.

About 10–100 million events per background process that were produced for the Snowmass effort [64] with MADGRAPH5 [65], including up to four extra partons from initial and final state radiation, matched to PYTHIA6 for fragmentation and hadronisation, are used in this paper. The background cross section is normalised to next-to-leading order (NLO) in the background production process, which is based on the work in preparation for the Snowmass summer study 2013 and discussed in more detail in Refs. [64, 66, 67]. While we studied all the major sources of background events, background processes with low cross sections that might become relevant at 3000 fb^{-1} are not included. The signal samples are generated with PYTHIA6 and passed through the DELPHES simulation. For PYTHIA6 the tune Z2* [68] is used. The signal cross sections are calculated at NLO with PROSPINO2 [32, 33].

Assuming systematic uncertainties of the same order as in the existing 8 TeV analyses, we determine for each search the discovery sensitivity, using the Binomial significance Z_{Bi} [69–71] in RooStats [72]. Here, the sensitivity is calculated in a frequentist way in one-sided Gaussian standard deviations, performing a hypothesis test between background-only and signal-plus-background, where the uncertainty on the background estimate is taken as Poisson distributed.

3.1 Full-hadronic search

Heavy squark and gluino production in R-parity conserving SUSY scenarios can lead to long decay chains with multiple jets and therefore a large amount of hadronic energy, and large missing transverse momentum. A typical search for such a scenario is based on the variable H_{T} , the scalar sum of the momenta of all jets with $p_{\text{T}} > 50 \text{ GeV}$ and $|\eta| < 2.5$, and missing hadronic transverse energy (MHT), which is defined as absolute value of the negative vectorial sum of all jets with $p_{\text{T}} > 30 \text{ GeV}$ and $|\eta| < 5$. The SM background to this SUSY search arises mainly from the following processes: $Z(\nu\nu) + \text{jets}$ events, and $W(l\nu) + \text{jets}$ events from W , or $\bar{t}t + \text{jets}$, where at least one W boson decays leptonically. The $W(l\nu) + \text{jets}$ events pass the search selection when the e/μ escapes detection or when a top decays hadronically. QCD multijet events also contribute to the background when jet-energy mismeasurements or leptonic decays of heavy-flavour hadrons inside jets produce large MHT. However, the QCD background generally becomes negligible at very high MHT as required here.

The analysis follows the baseline selections motivated by the 8 TeV analysis [46], requiring at least three jets with $p_{\text{T}} > 50 \text{ GeV}$ and $|\eta| < 2.5$, $H_{\text{T}} > 1000 \text{ GeV}$ and $\text{MHT} > 500 \text{ GeV}$. In order to remove the QCD background, events

Table 8 LHC all-hadronic inclusive search: background and signal event yields corresponding to 300 fb^{-1} . The notation “V” refers to W, Z and γ . Four signal regions (SR) are shown here

Signal regions	$t\bar{t}$ + jets	V + jets	VV + jets	Top + jets	Total SM	STC8	STC10
SR A: $H_T > 2000 \text{ GeV}$; $MHT > 1500 \text{ GeV}$	0.29	43	2.1	0.01	45	45	35
SR B: $H_T > 2000 \text{ GeV}$; $MHT > 1000 \text{ GeV}$; $n(\text{Bjets}) \geq 2$	4.4	14	0.92	0.15	20	51	35
SR C: $H_T > 3500 \text{ GeV}$; $MHT > 1000 \text{ GeV}$	0.49	9.5	0.54	0.01	10	8.4	7.6
SR D: $H_T > 3000 \text{ GeV}$; $MHT > 1500 \text{ GeV}$	0.1	6.3	0.41	0.002	6.8	8.2	7.2

are required to satisfy the following cuts for the azimuthal angle difference between the leading jets and MHT direction: $|\Delta\phi(j_n, \text{MHT})| > 0.5$ for $n = 1, 2$ and $|\Delta\phi(j_3, \text{MHT})| > 0.3$. Events are vetoed when they contain isolated muons satisfying $p_T > 10 \text{ GeV}$ and $|\eta| < 2.4$ or electrons with $p_T > 10 \text{ GeV}$ and $|\eta| < 2.5$, which suppresses mainly the $t\bar{t}$ and $W(l\nu)$ + jets background. The baseline cut flow is given in the Appendix, in Table 9.

The recent searches by the CMS Collaboration split the events from the baseline selection into several exclusive search regions according to their H_T , MHT and b-tag multiplicity, while for this study we keep only four well-motivated signal regions listed in Table 8. The most promising signal region targeting the inclusive production of heavy gluinos and squarks of all generations is SR A, where we require $H_T > 2000 \text{ GeV}$ and $MHT > 1500 \text{ GeV}$. Figure 3a, b shows the H_T and MHT distribution for this selection. Two other signal regions, SR C and SR D, are characterised by higher H_T requirements and reject too much signal, which could be taken as a hint on the (not too high) squark or gluino mass. In SR A we find 45 (35) signal events for STC8 (STC10) over 45 background events for an integrated luminosity of 300 fb^{-1} . About 80% of these signal events are first- and second-generation squarks. Assuming a systematic uncertainty of 20%, we determine a discovery sensitivity of about 3σ .

Another signal region, SR B, defined by $H_T > 2000 \text{ GeV}$, $MHT > 1000 \text{ GeV}$ and $N_{\text{b-tags}} \geq 2$, is tailored to SUSY signals with a light third generation, being sensitive to either gluinos decaying through (virtual) top or bottom squarks or to directly produced third-generation squarks. The results for this signal region are shown in Fig. 3c, d. We find 51 (35) signal events in STC8 (STC10), expecting 20 background events for 300 fb^{-1} . A discovery sensitivity of 5σ will be reached with 200 fb^{-1} , assuming a systematic uncertainty of 20%. The signal consists mainly of gluino-associated ($\tilde{g}\tilde{g}$ and $\tilde{g}\tilde{q}$) and direct heavy-squark production (about 65% of the final events).

Further studies of the kinematic variables may shed more light on the nature of the new physics seen in this scenario and are discussed in the following sections.

3.2 Search for direct bottom-squark production in the final states with two b-quark and missing energy

In this section, we investigate the discovery potential for third-generation squarks in the final state with two b-jets and missing energy in the LHC. Of particular interest for this search is the decay $\tilde{b}_1 \rightarrow b\tilde{\chi}_1^0$, which is the dominant decay mode of bottom squark in the investigated models, with branching fractions of more than 50%. Assuming that the bottom squarks are pair-produced, a final state containing exactly two b-quarks and two neutralinos is expected for about 25% of the signal events. As the masses of the $\tilde{\chi}_1^\pm$ and the $\tilde{\chi}_1^0$ are not degenerate, the contribution of the top squark to this final state is small the STCx models.

Two jets which originate directly from bottom-squark production should exhibit sizeable transverse momentum. Figure 4a, b display the p_T of the two leading jets for all the standard-model processes and the signal. When the bottom squark decays directly to a b quark and a neutralino, the resulting b-jet p_T is on average harder than for SM and other SUSY processes. Therefore, we require the events to contain exactly two central jets with $|\eta| < 2.4$ and $p_T > 300$ and 200 GeV , respectively. Events including any additional jet with $p_T > 70 \text{ GeV}$ are rejected. In addition, both leading jets are required to be identified as originating from a bottom quark.

By vetoing events with at least one lepton with $p_T > 10 \text{ GeV}$, we suppress the main standard-model background processes such as $t\bar{t}$ and W + jets. The distribution of the missing energy for the events passing the above requirement is shown in Fig. 4c. We require missing transverse energy to be $E_T^{\text{miss}} > 450 \text{ GeV}$.

The $t\bar{t}$ and W + jets backgrounds are suppressed further by requiring the minimum invariant transverse mass m_T of

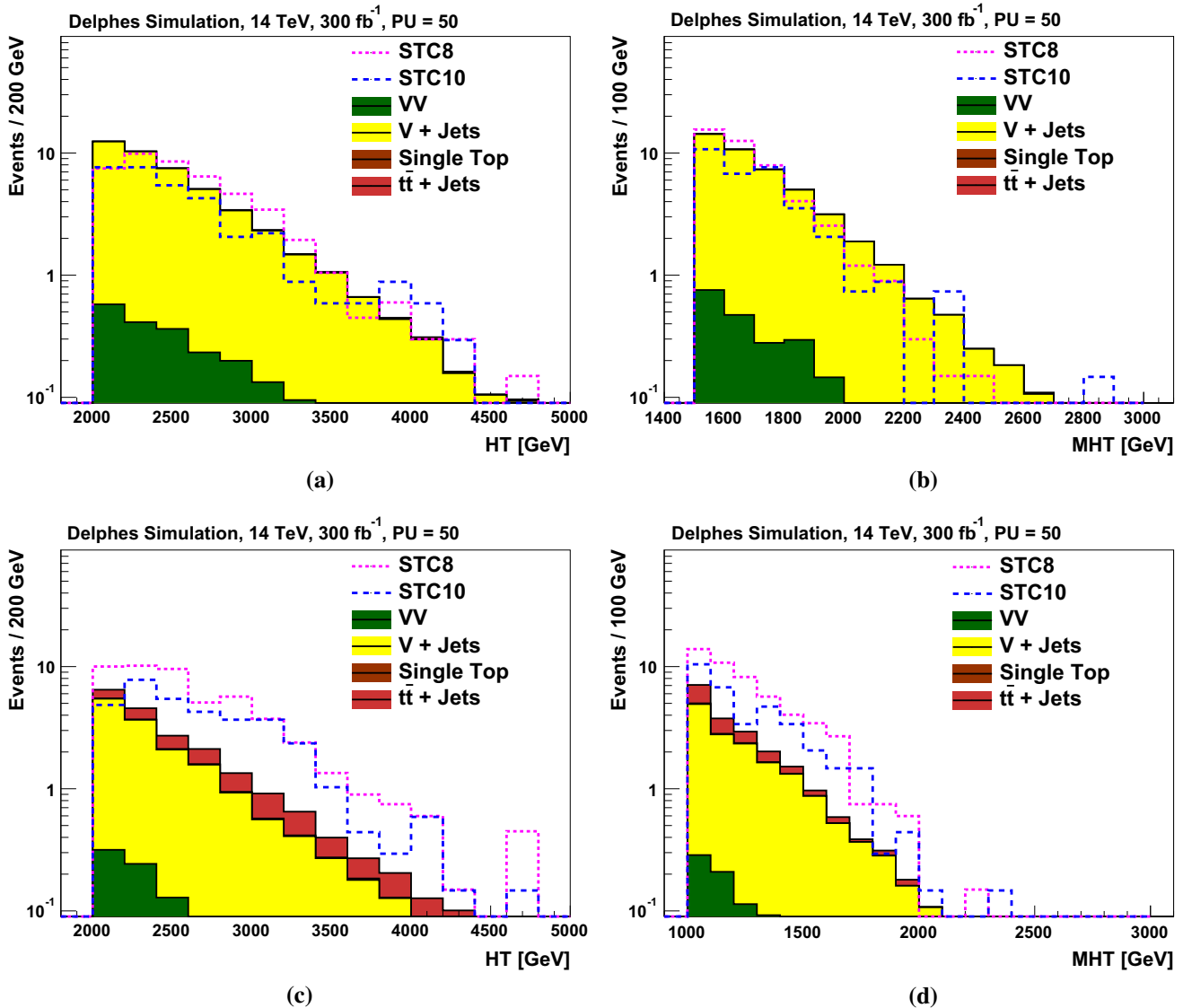


Fig. 3 LHC all-hadronic inclusive search: H_T and MHT for signals and SM backgrounds after all selection requirements are applied. **a, b** Inclusive search region SR A; **c, d** signal region SR B including the requirement of at least two b-tagged jets

one of the two leading jets (jet_i) and the missing transverse momentum to be greater than 500 GeV. The invariant transverse mass is a quantity that is often used in LHC analyses, and it is defined as function of the transverse momenta of two objects a and b as follows:

$$m_T(p_T^a, p_T^b) = \sqrt{2p_T^a p_T^b (1 - \cos(\Delta\phi(p_T^a, p_T^b)))}. \quad (1)$$

The distribution of $\min(m_T(p_T^{jet_1}, E_T^{miss}), m_T(p_T^{jet_2}, E_T^{miss}))$ as shown in Fig. 4d is expected to have a kinematic edge at the mass of the top quark when the jet and E_T^{miss} originate from semileptonic decay of a top quark. A cutoff is shown in the Appendix, in Table 10.

With an integrated luminosity of 300 fb^{-1} , we find 74 (44) signal events in STC8 (STC10) for a background yield of 28 events. 73% of the selected signal events in the STC8 scenario are from direct bottom-squark production with the desired decay, $\tilde{b}_1 \rightarrow b\tilde{\chi}_1^0$. In STC10, this number reduces to 58% due to higher contamination from decays to b quarks and $\tilde{\chi}_2^0, \tilde{\chi}_3^0, \text{ or } \tilde{\chi}_4^0$. In both scenarios, we observe about 5% SUSY background due to \tilde{t}_1 decays. The other bottom-squark decay modes and all events originating from top-squark decays are treated as SUSY background in this analysis. Assuming a systematic uncertainty of 15%, this channel reaches a discovery sensitivity of 5σ with about 90 and 300 fb^{-1} of data for STC8 and STC10, respectively.

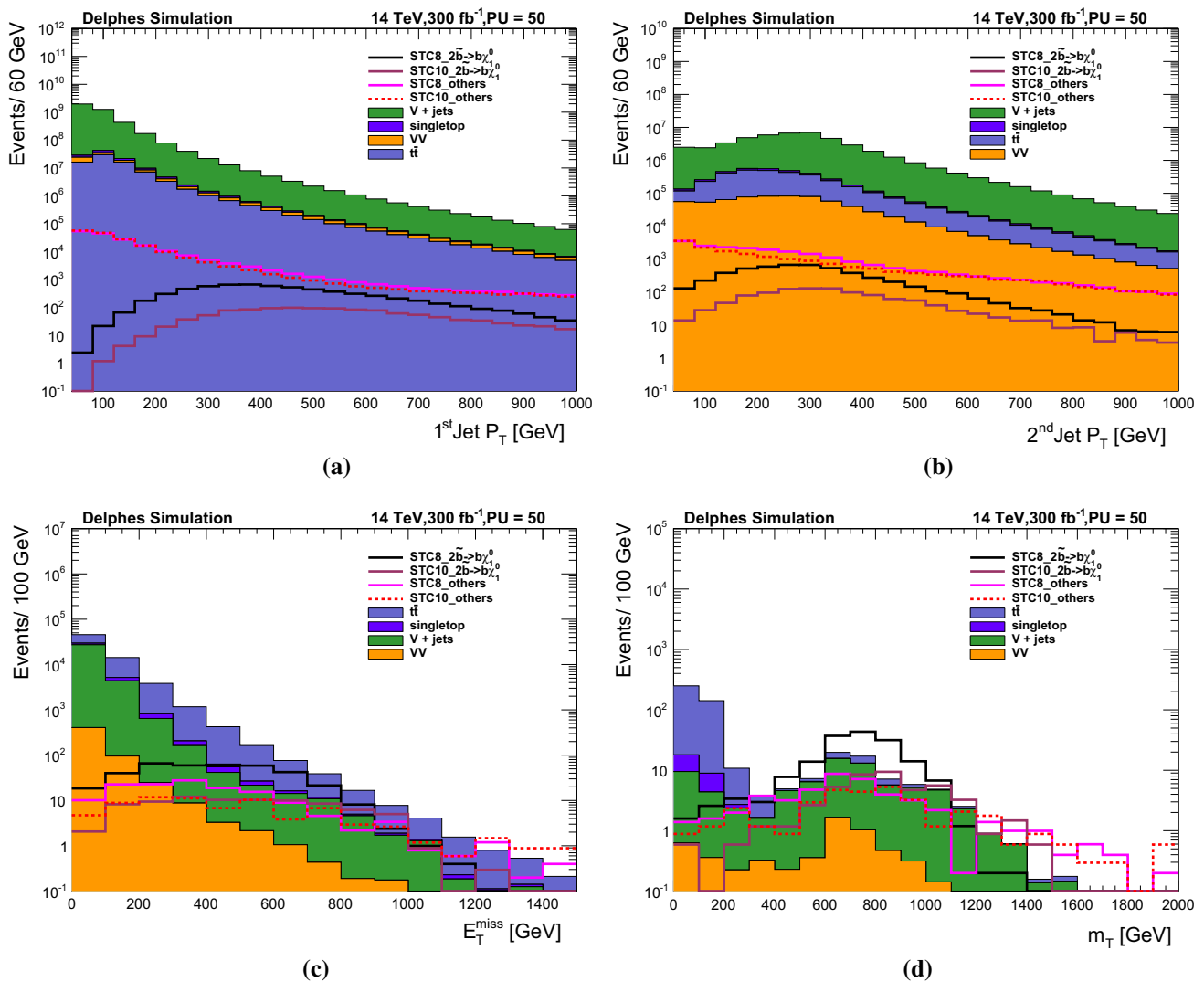


Fig. 4 LHC bottom-squark search: **a** p_T of the leading jet for events with exactly two central jets; **b** p_T of the next-to-leading jet after applying the leading jet p_T requirement; **c** E_T^{miss} after requiring for exactly two b-tagged jets; **d** m_T after requiring for exactly two b-tagged jets and

$E_T^{\text{miss}} > 450 \text{ GeV}$. All signal events where at least one bottom squark do not decay to $\bar{b}_1 \rightarrow b\tilde{\chi}_1^0$, plus all other SUSY processes are classified as “STC other”

3.3 Search for direct top-squark production in the single-lepton channel

In this section, we discuss the search for direct top-squark pair production. Previously conducted searches by the CMS collaboration [53] focus on simplified SUSY models, where only the process of interest is considered while all other sparticles masses are assumed to be out of reach. In these simplified models two top squarks are produced, which decay into either $t\tilde{\chi}_1^0$ or $b\tilde{\chi}_1^\pm$, with varying branching ratios. The two STC models considered here, however, only a very small fraction of events where two top squarks are produced exhibit the sought-after decay process. As an example, in the STC8 model only 1.6 % of $t_1\bar{t}_1^*$ events are expected to have a decay mode $\tilde{t}_1\tilde{t}_1^* \rightarrow (t\tilde{\chi}_1^0)(\bar{t}\tilde{\chi}_1^0)$.

Additionally, bottom-squark pair production enters as a sizeable intrinsic SUSY background when one of the bottom squarks decays to $b\tilde{\chi}_1^0$ and the other one decays to $t\tilde{\chi}_1^\pm$. Gluino and squark production also enter as an intrinsic background with top quarks in the decay chain resulting in similar signatures as expected for the process of interest. Thus, we face two major challenges in this analysis, one being a large SM background and the other one being the background from other SUSY processes.

The analysis method follows the aforementioned search performed by the CMS collaboration at 8 TeV [53], but with tighter selection requirements. We require a single isolated electron or muon with $p_T > 30 \text{ GeV}$ and $|\eta| < 2.4$. Events are vetoed if there are additional isolated leptons with $p_T > 20 \text{ GeV}$. In addition, we require at least five jets with $p_T >$

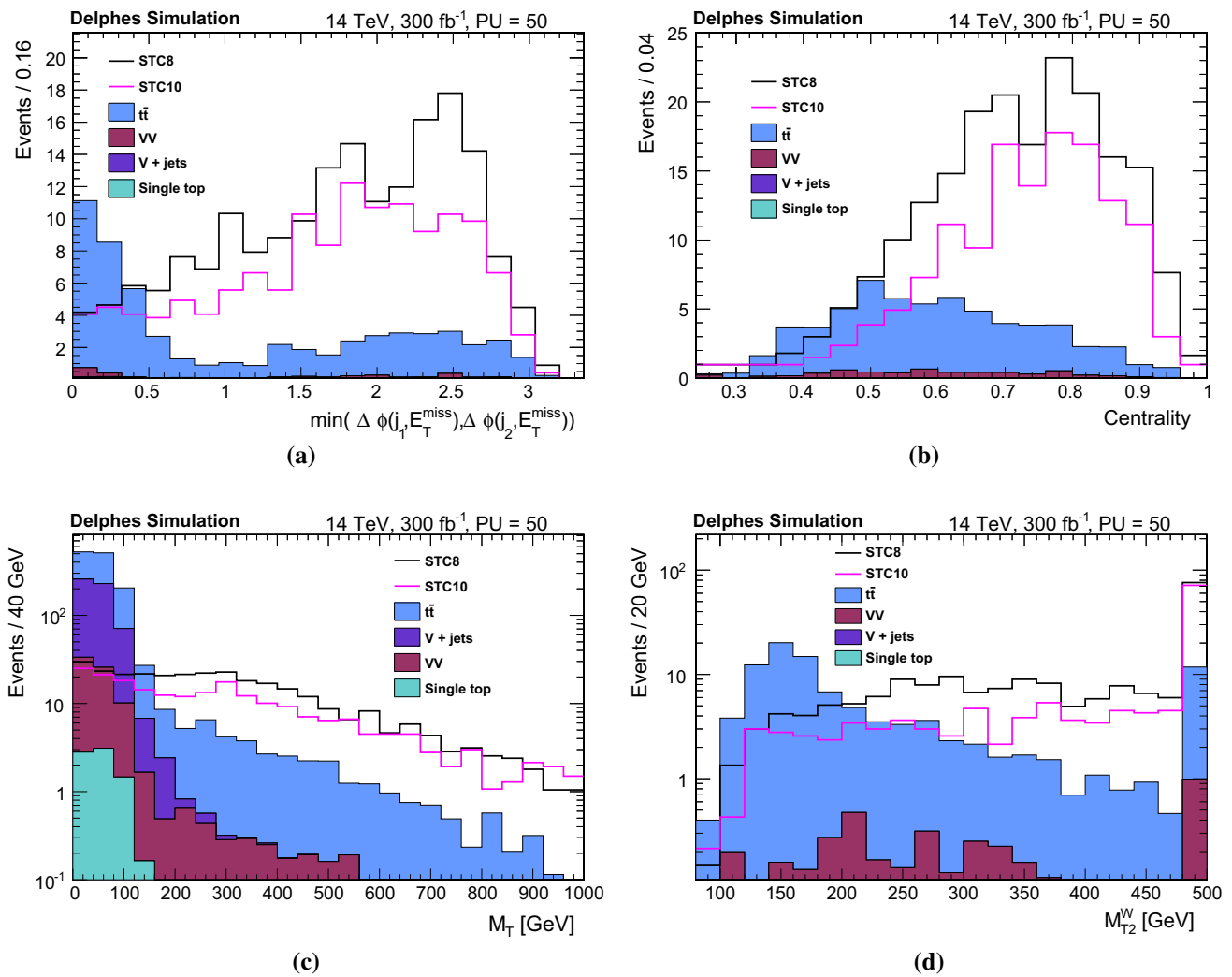


Fig. 5 LHC top-squark search: comparison of **a** $\Delta\phi$, **b** centrality, **c** m_T , and **d** m_{T2}^W for signals and SM backgrounds after all selection requirements are applied except on the variables themselves. The last bin in in

the variable m_{T2}^W holds all events where the minimisation, which is performed during the calculation of the variable, does not converge within a reasonable amount of steps

40 GeV and $|\eta| < 2.4$, which enhances the fraction of $\tilde{t}_1\tilde{t}_1^*$ events with respect to $\tilde{b}_1\tilde{b}_1^*$ events. One or two of these jets must satisfy at least a medium b-tag requirement. To further reduce the SM background, we require $E_T^{\text{miss}} > 400$ GeV.

Additionally, we introduce an angular variable $\min \Delta\phi$, the minimum azimuthal angle between the leading or sub-leading jet and the E_T^{miss} . For this variable we require events to have a value greater than 0.8 in order to reduce backgrounds from SM processes. Another variable that aids in reducing backgrounds is centrality, defined as the sum of the p_T of the lepton and jets divided by their total momentum $\frac{\sum_i \text{jet}_i(p_T) + \text{lepton}(p_T)}{\sum_i \text{jet}_i(p) + \text{lepton}(p)}$. For SUSY events we expect this variable to be shifted towards higher values, while SM backgrounds are less central. Events are selected that satisfy centrality > 0.6 .

After requiring the transverse mass, m_T , calculated with Eq. (1) for the system consisting of the lepton p_T and the missing transverse momentum vector, to satisfy $m_T > 260$ GeV, the background arises predominantly from two sources: $t\bar{t}$ events in which both W bosons decay leptonically but one lepton is lost, and diboson events. In order to suppress the $t\bar{t}$ background, we require m_{T2}^W , defined as the minimum “mother” particle mass compatible with all the transverse momenta and mass-shell constraints [73], to be above 260 GeV. By construction, for the dilepton $t\bar{t}$ background without mismeasurement effects, m_{T2}^W has an endpoint at the top quark mass, while for semi-leptonic $t\bar{t}$ events and signal it has a large tail. Figure 5 shows the $\Delta\phi$, centrality, m_T , and the m_{T2}^W distributions after all previously mentioned selection criteria are applied, except on the variables themselves. A outflow can be found in the Appendix, in Table 11.

After all selection requirements, we find for 300 fb^{-1} 155 (STC8) and 113 (STC10) signal events with a very low background of 28 events. Assuming a systematic uncertainty of 15 %, the STC8 model could be discovered with 5σ with an integrated luminosity of 25 fb^{-1} , and STC10 with 40 fb^{-1} . While the search targets direct top-squark pair production, the final composition of the selected events contains only about 42 % of this type for STC8 and 23 % for STC10. The additional events originate from squark-gluino production and bottom-squark pair production.

3.4 Search in the multi-lepton channel

In the STCx models, the cross section for direct $\tilde{\chi}_2^0 \tilde{\chi}_1^\pm$ production in proton–proton collisions amounts to more than 1 pb. The golden channel for the discovery of this process is the multi-lepton channel, with final states containing three or more prompt leptons. The leptons for the signal are produced by slepton mediated decays or by leptonic decays of W or Z bosons which are produced in the decay chain. However, in the STC8 model the $\tilde{\tau}_1$ is the NLSP and almost mass degenerated with $\tilde{\chi}_1^0$, leading to soft leptons in the dominant decay modes of $\tilde{\chi}_2^0$ and $\tilde{\chi}_1^\pm$ decays via $\tilde{\tau}_1$ (cf. Table 4). Most of these leptons will not pass the selection criteria, and thus we expect only a small sensitivity to these decay modes.

In the following we define the lepton to be either an isolated muon or an isolated electron, which includes the leptonic decay modes of the τ leptons. As hadronic decays of τ leptons are not optimally modelled in the used DELPHES version, we do not consider these here. All leptons must have a transverse momentum $p_T > 10 \text{ GeV}$. In order to comply with the trigger, the leading (sub-leading) lepton must satisfy $p_T > 25 \text{ GeV}$ (15 GeV). We present here the analysis of the three-lepton final state requiring exactly three leptons. The analysis of events with four or more leptons does not increase the sensitivity and is not discussed further.

The WZ and ZZ production are summarised as VV background. Non-prompt backgrounds cover all events which include leptons from misidentified objects (also known as ‘fake’ sources), or leptons which are not produced by the hard scattering. For example, dileptonic decays of $t\bar{t}$, where one of the b-jets produces an isolated lepton, leads to final states with three leptons. All other processes which contribute to the three- or four-lepton final states, e.g. SM Higgs-boson production or triple-boson production, are summarised as rare backgrounds. The signal is subdivided into four production mechanisms, the direct chargino-neutralino production of the second-lowest mass electroweakinos $\tilde{\chi}_2^0 \tilde{\chi}_1^\pm$, and the production of at least one higher-mass chargino, $\tilde{\chi}_2^\pm$, summarised as $\tilde{\chi}_2^\pm \tilde{\chi}_m^0$. Other direct production modes of charginos and/or neutralinos are comprised in ‘other EWK’, while we label all events from other sources than electroweakino production,

such as slepton-pair production or production of coloured SUSY particles, as ‘noEWK’.

The main background in the three-lepton final state originates from WZ production, where both bosons decay into leptons. The transverse mass, calculated with Eq. (1) for the missing transverse energy and the p_T of the lepton from the W boson, is used to suppress this kind of background. The second most important background are three-lepton events from non-prompt sources. Most of those events stem either from $t\bar{t}$ or Drell–Yan events. The latter are suppressed by the requirement of large E_T^{miss} , whereas the $t\bar{t}$ events are reduced by a b-jet veto. In order to maximise the sensitivity we use a three-dimensional binning in the variables $m_{\ell+\ell-}$ (invariant mass closest to m_Z), E_T^{miss} and m_T . In Fig. 6 the expected distributions for SM and STC8 are shown as well as definition of our search regions. The events are further separated by the value of the invariant mass of the opposite-sign same-flavour lepton pair: $m_{\ell+\ell-} < 75 \text{ GeV}$, $75 \text{ GeV} < m_{\ell+\ell-} < 105 \text{ GeV}$ and $m_{\ell+\ell-} > 105 \text{ GeV}$.

Overall we define 45 independent search regions, which are listed in the Appendix in Table 12 and which all contribute to the final sensitivity. The applied uncertainties include lepton uncertainties (3 % per lepton), uncertainties on the E_T^{miss} shape (15–25 %) and uncertainties of the MC statistics (0–30 %). When combining all search regions, we can discover STC8 with less than 200 fb^{-1} . The most sensitive individual regions are at medium m_T (200–400 GeV) and medium E_T^{miss} (200–400 GeV), either requiring $m_{\ell+\ell-}$ to be around the Z-boson mass, which is mainly driven by direct $\tilde{\chi}_2^0 \tilde{\chi}_1^\pm$ production followed by $\tilde{\chi}_2^0 \rightarrow Z \tilde{\chi}_1^0$, or for $m_{\ell+\ell-}$ higher than the Z-boson mass. In the latter signal region long-chain decays of the higher-mass neutralinos and charginos give important contributions, whereas the role of decays of the $\tilde{\chi}_2^0$ via smuon or selectron is reduced due to their kinematic edge at $m_{\ell+\ell-} < 110 \text{ GeV}$.

4 ILC projections

Due to the clean conditions at an e^+e^- collider, the searches for SUSY at the ILC are exclusive, with separate analyses adapted to each specific channel searched for.

Out of the plethora of exclusive processes, in particular pair production of sleptons has been analysed in context of this paper, assuming an integrated luminosity of 1000 fb^{-1} at $E_{\text{cms}} = 500 \text{ GeV}$, which corresponds to four years of data taking at the design luminosity of the ILC. The data is assumed to be collected in two equal-size samples, with beam polarisations of $\mathcal{P}_{+80,-30}$ or $\mathcal{P}_{-80,+30}$, respectively. The beam conditions described in the ILC TDR [26] are applied for the simulation. We use the same SM background samples as for the detector benchmarking, presented in the ILC TDR [74]. These samples are produced with v.1.95 of the

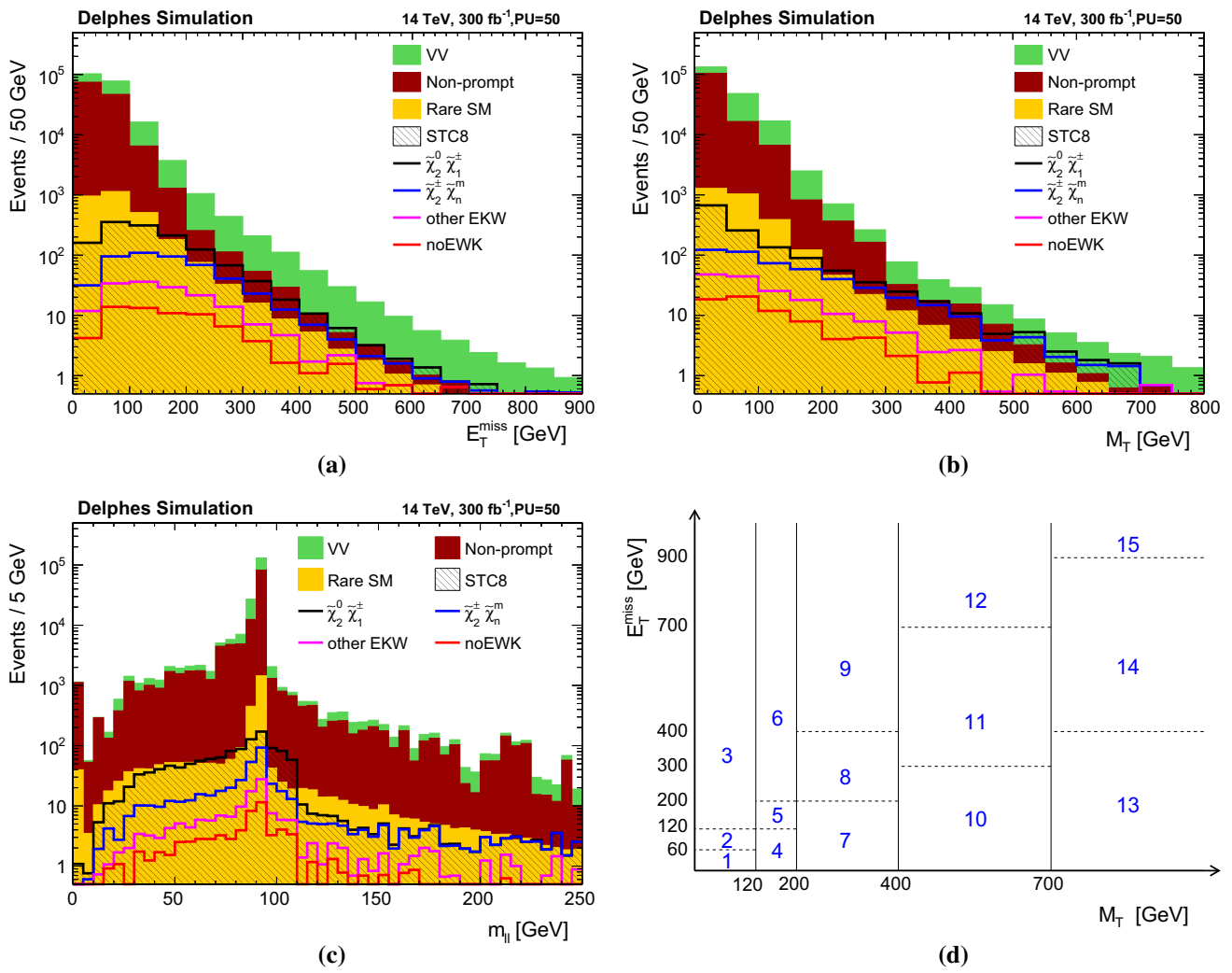


Fig. 6 LHC Multi-lepton search: E_T^{miss} (a), M_T (b) and $m_{\ell\ell}$ (c) distribution for three lepton events. Figure d illustrates the numbering scheme of the search regions. Detailed results for these are given in the Appendix, in Table 12

WHIZARD [75] event generator. For one background category, $\gamma\gamma$ processes, the statistics in the TDR sample was insufficient, and a dedicated simulation, using the same version of WHIZARD is done to extend also this sample to correspond to the above-mentioned integrated luminosity of 500 fb⁻¹ per polarisation. Under these conditions the total expected SM background is 1270 million events. The SUSY signal is also generated with WHIZARD 1.95, using the same settings as for the SM samples, with the exception that the study of the threshold scans of $\tilde{\mu}_R$ and \tilde{e}_R , where the signal is generated using PYTHIA6.422 [62]. The detector simulation used is the fast simulation program SGV [76], adapted to the ILD detector concept at ILC [74]. In this program, the detector geometry is described in a complete but simplified model, and it is used to calculate the helix parameters and covariances for all charged particles individually. The calculation includes description of the point resolutions at each layer, the mag-

netic field, and the effect of multiple scattering. In addition, brems-strahlung and γ conversions in the tracker material is simulated at each layer. The measurements by the calorimeter system are in a first pass simulated parametrically for each particle reaching it. In a second pass, the individual showers are split or merged by a procedure adjusted to as well as possible emulate the performance of the particle-flow algorithm as implemented in the full simulation and reconstruction of the ILD detector.

Beyond slepton-pair production, we summarise the results from previous studies performed on similar benchmark models and discuss them in the context of STCx. Most of these studies have been performed in full GEANT4-based simulation of the ILD detector concept, using samples simulated for the ILD LoI [77].

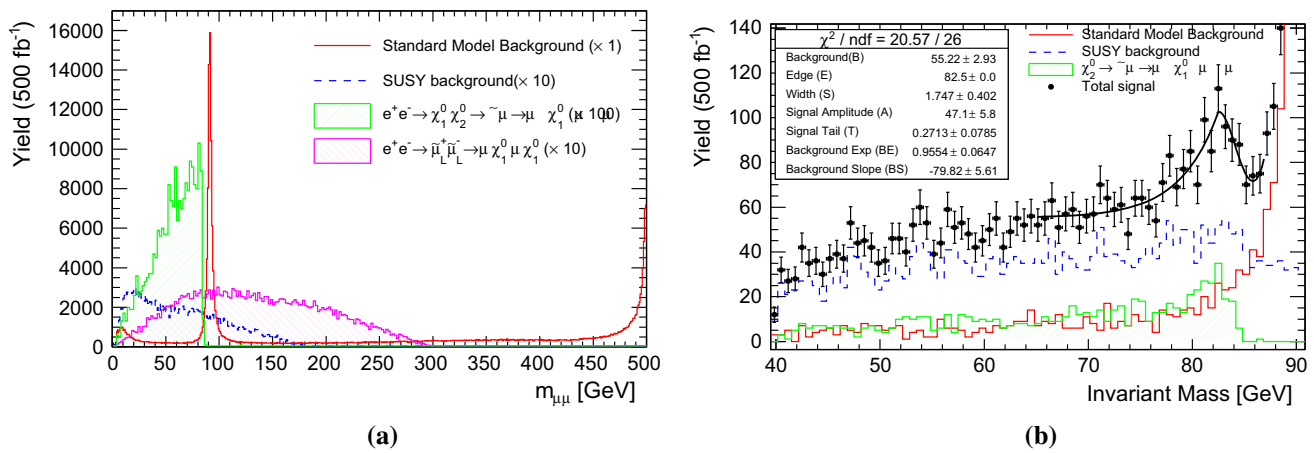


Fig. 7 Determination of the $\tilde{\chi}_2^0$ mass from the di-muon invariant mass spectrum, with the full spectrum for inclusive di-muon sample (a) and a zoom into signal region after dedicated selection (b). From [80]

4.1 Analysis of direct electroweakino production

At the ILC, direct electroweakino production occurs at rates in the order of 100 pb, cf. Fig. 2. At a centre-of-mass energy of 500 GeV, $\tilde{\chi}_1^0\tilde{\chi}_1^0$, $\tilde{\chi}_1^0\tilde{\chi}_2^0$, $\tilde{\chi}_2^0\tilde{\chi}_2^0$ and $\tilde{\chi}_1^\pm\tilde{\chi}_1^\pm$ are kinematically accessible in the STCx scenarios. By measuring their polarised production cross sections and the masses of the involved sparticles, the parameters of the electroweakino sector (M_1 , M_2 , μ , $\tan\beta$) can be determined [78], given sufficient precision of the experimental observations.

As a particular challenge of the STCx models, the $\tilde{\chi}_2^0$ and $\tilde{\chi}_1^\pm$ decay dominantly via the $\tilde{\tau}_1$ NLSP. Nevertheless, almost all electroweakinos have branching fractions at the few percent level to other final states than the notoriously difficult τ lepton. The use of beam polarisation and tunable E_{cms} will further enhance the power of the observations and allow to disentangle production modes with very similar final states.

4.1.1 $\tilde{\chi}_1^0\tilde{\chi}_2^0$ production

The dominating decay $\tilde{\chi}_2^0 \rightarrow \tilde{\tau}_1\tau$, with a branching ratio of about 70%, leads to the same final state content ($\tau^+\tau^-\tilde{\chi}_1^0\tilde{\chi}_1^0$) as for $\tilde{\tau}_1$ pair production. However, they can be disentangled by their different beam polarisation dependency and kinematic properties. The di- τ invariant mass can be employed to measure the mass of the $\tilde{\chi}_2^0$. This channel has been studied based on four-vector smearing, indicating that precisions of 1-2 GeV could be achievable [79]. In our scenario, the di- τ final state also receives background from $\tilde{\chi}_1^\pm\tilde{\chi}_1^\pm \rightarrow \tilde{\tau}_1\nu_\tau\tilde{\tau}_1\nu_\tau$, which features a similar cross section \times BR at $E_{\text{cms}} = 500$ GeV. The two processes can in principle be disentangled by the different kinematic features, but the achievable resolutions would need to be studied. However,

thanks to the tunable centre-of-mass energy of the ILC, this problem can be avoided altogether by collecting data below the threshold for chargino-pair production, in our case e.g. between $E_{\text{cms}} = 350$ and 400 GeV, or by scanning the $\tilde{\chi}_1^0\tilde{\chi}_2^0$ production threshold.

More recently, it has been shown in full GEANT4-based simulation of the ILD detector that the contribution from $\tilde{\chi}_1^0\tilde{\chi}_2^0 \rightarrow \mu\mu\tilde{\chi}_1^0\tilde{\chi}_1^0$, which is about a factor of 10 smaller, leads to competitive mass and cross-section measurements. Figure 7 shows for instance the invariant mass spectrum of the two muons before [(a), signal is scaled by a factor of 100] and after event selection (b). From this channel alone, the mass of the $\tilde{\chi}_2^0$ can be determined to a precision of about 1 GeV for an integrated luminosity of 500 fb⁻¹ collected with $\mathcal{P}_{-80,+60}$, depending on the assumed precision for the mass of $\tilde{\mu}_R$ and $\tilde{\chi}_1^0$ [80].

Within the same study, the corresponding uncertainty on $\sigma(e^+e^- \rightarrow \tilde{\chi}_1^0\tilde{\chi}_2^0) \times BR(\tilde{\chi}_2^0 \rightarrow \mu\mu\tilde{\chi}_1^0)$ has been determined to about 20%, while the precision on $\sigma(e^+e^- \rightarrow \tilde{\chi}_1^0\tilde{\chi}_2^0) \times BR(\tilde{\chi}_2^0 \rightarrow \tau\tau\tilde{\chi}_1^0)$ has been estimated to 2% [79]. We thus conclude that the corresponding studies of the di- τ channel should be repeated with up-to-date simulation of the expected detector and accelerator performance.

4.1.2 $\tilde{\chi}_1^\pm\tilde{\chi}_1^\pm$ production

As discussed above, the final states of $\tilde{\chi}_1^\pm$ pair production will be dominated by di- τ plus missing four-momentum final states from $\tilde{\chi}_1^\pm \rightarrow \tilde{\tau}_1\nu_\tau$ or $\tilde{\chi}_1^\pm \rightarrow \tilde{\nu}_\tau\tau$ followed by an invisible decay of $\tilde{\nu}_\tau$, thus be similar to those from $\tilde{\chi}_1^0\tilde{\chi}_2^0$. While at $E_{\text{cms}} = 500$ GeV the cross section \times BR should be clearly measurable above the $\tilde{\chi}_1^0\tilde{\chi}_2^0$ background, especially once the latter is known from running below the $\tilde{\chi}_1^\pm\tilde{\chi}_1^\pm$ threshold, kinematic mass reconstruction in this channel needs further

study, like in the case of $\tilde{\chi}_1^0 \tilde{\chi}_2^0$. However, there are several alternatives to measure the mass:

On one hand, the $\tilde{\chi}_1^\pm$ features a branching ratio of about 7% to $\tilde{\chi}_1^0 W^\pm$. Events where this decay, followed by $W \rightarrow q\bar{q}'$, occurs for one of the $\tilde{\chi}_1^\pm$, while the other could e.g. decay to $\tilde{\tau}_1 \nu_\tau$, give a very unique signature. The edges in the energy spectrum of the W bosons can then be used to determine the mass of the $\tilde{\chi}_1^\pm$ if the $\tilde{\chi}_1^0$ mass is known (see Sect. 4.2). This reconstruction method has been studied in full detector simulation by ILD [77,81] and SiD [82] for a SUSY scenario where the sleptons are heavier than the electroweakinos and thus both $\tilde{\chi}_1^\pm \rightarrow \tilde{\chi}_1^0 W$ and $\tilde{\chi}_2^0 \rightarrow \tilde{\chi}_1^0 Z$ have branching ratios close to unity. These studies achieved mass resolutions of about 1.5 % for the $\tilde{\chi}_1^\pm$ based on 125×10^3 $\tilde{\chi}_1^\pm \rightarrow \tilde{\chi}_1^0 W$ decays, assuming the $\tilde{\chi}_1^0$ mass is known from another source. In STCx, with an integrated luminosity of 500 fb^{-1} , only 11×10^3 decays would be available and the $\tilde{\chi}_1^0$ mass would be known to permille level precision from slepton-pair production, cf. Sect. 4.2.1. However, backgrounds would also be lower, since (a) the branching ratio for $\tilde{\chi}_2^0 \rightarrow \tilde{\chi}_1^0 Z$ is 100 times lower than in the original scenario of these studies and (b) the dominating SM background does not originate from fully hadronic W pairs anymore, but from semi-leptonic ones, where the charge of the lepton in conjunction with the forward-backward asymmetry provides an additional, very effective suppression mechanism [83]. But even neglecting these expected benefits, the pure scaling according to the number of decays yields a projected uncertainty of 5 % on the $\tilde{\chi}_1^\pm$ mass. With the full running program of the ILC [27], this would shrink to about 2.5 %.

In addition, the decays $\tilde{\chi}_1^\pm \rightarrow \tilde{\nu}_e e$ and $\tilde{\chi}_1^\pm \rightarrow \tilde{\nu}_\mu \mu$ give important information not only on the $\tilde{\chi}_1^\pm$ mass, but also on the mass of the mostly invisible $\tilde{\nu}$. Since the mass difference between $\tilde{\chi}_1^\pm$ and $\tilde{\nu}$ is only 10 GeV, lower as well as the upper edge of the lepton energy spectrum are significantly below the lower edge from pair production of the left-handed sleptons (cf. 4.2.1), at 8 and 16 GeV, respectively. Pair production of the right-handed selectrons is heavily suppressed by the appropriate choice of beam polarisation. Selectron and smuon backgrounds can be reduced further by selecting chargino decays to different lepton flavours in the two decay chains of an event. While $\tilde{\tau}_1$ -pair production leads to different flavour leptons in the final state, the decay leptons of the τ decays will be distributed over a wide range of energies (cf. Fig 12), whereas the signal leptons lead to a sharp-edged, narrow box with the above edge positions. With the branching ratios of STCx, about 20×10^3 decays to $\tilde{\nu}_\ell \ell$ will be available from 500 fb^{-1} of data. Since this is similar in size to the available statistics for e.g. the $\tilde{\mu}_L$ (cf. Sect. 4.2.1), with steeper edges due to the smaller range of lepton energies, a precision of 1 % or better should be achievable for both the $\tilde{\chi}_1^\pm$ and the $\tilde{\nu}$ mass.

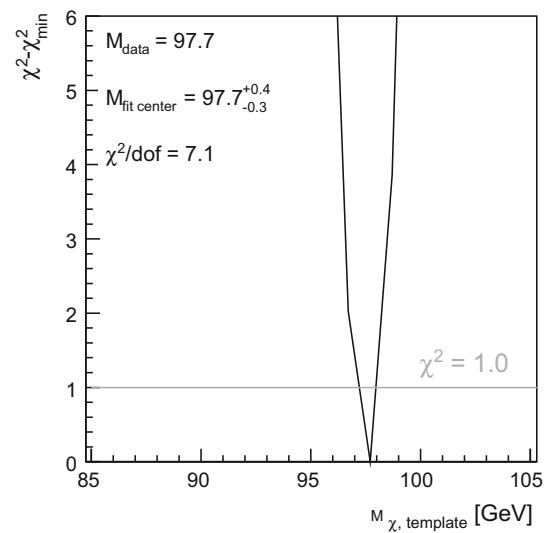


Fig. 8 Determination of $m_{\tilde{\chi}_1^0}$ from a template fit to the photon energy spectrum in $e^+e^- \rightarrow \tilde{\chi}_1^0 \tilde{\chi}_1^0 \gamma$. From [85]

4.1.3 Radiative $\tilde{\chi}_1^0 \tilde{\chi}_1^0$ production

Additional information can be gained from the analysis of radiative $\tilde{\chi}_1^0 \tilde{\chi}_1^0$ production, employing a similar technique as in WIMP dark matter searches in mono-photon signatures [84]. This has been studied in full GEANT4-based simulation of the ILD detector concept in [85]. With an integrated luminosity of 500 fb^{-1} , equally split between all four beam helicity combinations for $|P(e^-, e^+)| = (80, 30 \%)$, the unpolarised cross section as well as the cross section for purely right-handed electrons and left-handed positrons could be determined with a precision of about 5 % each. The mass of the $\tilde{\chi}_1^0$ could be determined to about 2 GeV, completely dominated by a rather conservative estimate of the systematic uncertainty due to the limited knowledge of the shape of the beam energy spectrum.

As can be seen in Fig. 8, the statistical precision, here from a template fit to the energy spectrum of the ISR photons, is much lower already with this rather modest luminosity assumed in the study. A more detailed analysis of the impact of the beam energy spectrum should be performed in the future.

4.2 Analysis of direct slepton production

By studying slepton-pair production in the continuum (i.e. well above the threshold), one takes advantage of the known initial state at the ILC: in general, the endpoints of the energies of the standard-model particles X and Y (both assumed to have negligible mass) in the process² $e^+e^- \rightarrow \tilde{X}\tilde{Y} \rightarrow$

² Usually, X and Y are particle and anti-particle.

$XY\tilde{\chi}_1^0\tilde{\chi}_1^0$ can be found to be

$$E_{i(\min)}^{\max} = \frac{M_{\tilde{\tau}_i}}{2} \left(1 - \left(\frac{M_{\tilde{\chi}_1^0}}{M_{\tilde{\tau}_i}} \right)^2 \right) (\gamma_{(-)}^+ \gamma \beta)$$

$$= \frac{M_{\tilde{\tau}_i}}{2} \left(1 - \left(\frac{M_{\tilde{\chi}_1^0}}{M_{\tilde{\tau}_i}} \right)^2 \right) \left(\frac{E_{\tilde{\tau}_i}^{lab}}{M_{\tilde{\tau}_i}} \right)_{(-)}^+ \frac{|\tilde{p}_{\tilde{\tau}_i}^{lab}|}{M_{\tilde{\tau}_i}} \quad (2)$$

where i is either X or Y . Note that due to momentum conservation, $\tilde{p}_{\tilde{X}}^{lab} = -\tilde{p}_{\tilde{Y}}^{lab}$. If the two sparticles have the same mass, so that $M_{\tilde{X}} = M_{\tilde{Y}} = M_{\tilde{\tau}_i}$, also $E_{\tilde{X}}^{lab} = E_{\tilde{Y}}^{lab} = E_{\text{cms}}/2$, and $|\tilde{p}_{\tilde{\tau}_i}^{lab}| = \sqrt{(E_{\text{cms}}/2)^2 - M_{\tilde{\tau}_i}^2}$. Hence, in the case of slepton pair production, $e^+e^- \rightarrow \tilde{\ell}\tilde{\ell}' \rightarrow \ell\ell\tilde{\chi}_1^0\tilde{\chi}_1^0$, one finds that

$$E_{\ell(\min)}^{\max} = \frac{E_{\text{cms}}}{4} \left(1 - \left(\frac{M_{\tilde{\chi}_1^0}}{M_{\tilde{\ell}}} \right)^2 \right) \left(1_{(-)}^+ \sqrt{1 - 4 \left(\frac{M_{\tilde{\ell}}}{E_{\text{cms}}} \right)^2} \right) \quad (3)$$

i.e. by determining these two endpoints, and using the knowledge of E_{cms} , both $M_{\tilde{\chi}_1^0}$ and $M_{\tilde{\ell}}$ can be determined. Even in the case where the slepton is a $\tilde{\tau}$, the endpoint of the spectrum of the τ decay products can be used to determine $M_{\tilde{\tau}}$, provided $M_{\tilde{\chi}_1^0}$ is known from e.g. the \tilde{e}_R and $\tilde{\mu}_R$ spectra, measured from the same data.

The key characteristics of slepton production and decay, which single them out from the background, are:

- only two leptons in the final state
- large missing energy and momentum
- large acollinearity, with little correlation to the energy of the lepton
- central production
- no forward-backward asymmetry

Different backgrounds dominate for the lighter and the heavier sleptons: for the $\tilde{\tau}_1$, the background from photon-photon processes is important, while $WW \rightarrow \ell\nu\ell\nu$ is less so; the opposite is true for the $\tilde{\tau}_2, \tilde{e}_L$ and $\tilde{\mu}_L$. For \tilde{e} and $\tilde{\mu}$, the lower endpoints of the spectra are high enough - both for the right-handed and left-handed states - that the photon-photon background does not pose a problem. The mass measurement relies on the detection of edges or endpoint in the spectrum of the SM decay products. Therefore, the SUSY background is less important, since it is only important that it is small and/or flat in a narrow region around the edges. In the case of \tilde{e} and $\tilde{\mu}$ the SUSY background is indeed found to be both small and flat in these regions. In the case of the $\tilde{\tau}$, the SUSY background is dominated by $\tilde{\chi}_1^\pm\tilde{\chi}_1^\mp$ and $\tilde{\chi}_2^0\tilde{\chi}_2^0$ production with cascade decays over $\tilde{\tau}$ sleptons, which all yield an upper

kinematic limit of the produced τ leptons well below those of both $\tilde{\tau}_1$ and $\tilde{\tau}_2$ pair production, so they have little influence on the determination of the upper endpoints of the spectra.

These considerations lead to the following selection criteria, valid for all slepton studies: The events should contain less than 10 charged particles, and two lepton candidates. The total charge should vanish, while each of the lepton-candidates should have opposite charge. The mass of each of the candidates should be less than $M_{\tilde{\tau}}$. The total visible energy in the event, E_{vis} , should not exceed 300 GeV, and the missing mass, M_{miss} , should be larger than 200 GeV. No particle in the event should have momentum above 180 GeV. Lepton-candidates are found using the DELPHI τ -finder [17], which is designed to identify both isolated electrons or muons, and decays of τ leptons. It is also robust against extra activity in the detector coming from beam-beam effects and overlaid low- p_T $\gamma\gamma$ events.

4.2.1 Selectrons and smuons

As can be seen in Fig. 2, the selectron pair production cross section is huge in our scenario due to the t -channel neutralino exchange, allowing a very precise determination of the masses and polarised cross sections in a short time. At larger integrated luminosities, very precise measurements of the selectron and LSP masses can be obtained from the edges of the spectrum. In addition to the generic slepton selection criteria presented above, it is also demanded that both lepton candidates are identified as electrons. To separate \tilde{e}_R and \tilde{e}_L , the beam-polarisation is helpful: for $\mathcal{P}_{+80,-30}$, \tilde{e}_R production is enhanced, while \tilde{e}_L production is suppressed. For $\mathcal{P}_{-80,+30}$, the situation is the opposite. In addition, since \tilde{e}_L is appreciably heavier than \tilde{e}_R , the decay products of the former are less boosted, and hence the detected leptons tend to be less back-to-back in \tilde{e}_L events. A cut on the transverse momentum of one electron with respect to the other one, $p_{T1(2)}^{\text{rel}}$ is therefore applied to further separate the two cases: $p_{T1}^{\text{rel}} + p_{T2}^{\text{rel}}$ should be less than 30 GeV for \tilde{e}_R candidates, and larger than 100 GeV for \tilde{e}_L candidates. With these cuts, the selection efficiency is 51 % for \tilde{e}_R and 47 % for \tilde{e}_L .

Figure 9 shows the spectra of electron energies in selected di-electron events after collecting 500 fb^{-1} of data for each of the beam-polarisations $\mathcal{P}_{-80,+30}$ and $\mathcal{P}_{+80,-30}$. The \tilde{e}_R signal stands out above quite small SM and SUSY background for beam-polarisation $\mathcal{P}_{+80,-30}$. The \tilde{e}_L signal is less clean both due to smaller signal cross section (cf. Fig. 2), larger background and lower efficiency, but is nevertheless quite prominent. In particular, both edges are detectable. This will still be the case even for substantially smaller branching ratios for the direct decay to lepton and LSP, compatible with LHC limits.

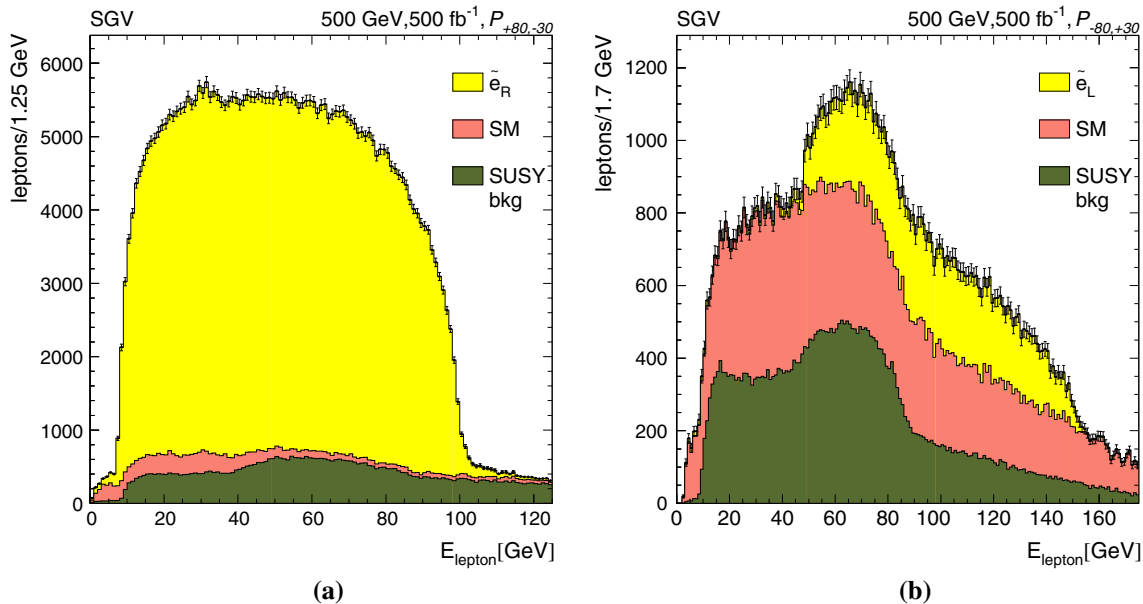


Fig. 9 Electron spectra from selectron decays and background, with electrons from \tilde{e}_R decays (a) and electrons from \tilde{e}_L decays (b)

The position of the edges is determined by sub-dividing the full data sample in sub-sets, and finding the most and least energetic lepton in each sub-set, after excluding a certain fraction of the extreme cases. The size of the sub-samples, and the fraction to be excluded is optimised to yield the lowest possible uncertainty on the endpoints. The resulting endpoints averaged over the sub-samples show a bias. This bias has been corrected for by means of a toy Monte Carlo procedure; the uncertainty on the SUSY masses is determined with this procedure as well. In this way, we obtain $M_{\tilde{\chi}_1^0} = 95.47 \pm 0.16$ GeV and $M_{\tilde{e}_r} = 126.20 \pm 0.21$ GeV from the \tilde{e}_R spectrum. The true masses in STCx are $M_{\tilde{\chi}_1^0} = 95.59$ GeV and $M_{\tilde{e}_R} = 126.24$ GeV.

The large SUSY background to \tilde{e}_L is mostly $\tilde{e}_R \tilde{e}_L$ production.³ This channel gives important information on the neutralino mixing, since e.g. in the case of light Higgsinos the t -channel would be strongly suppressed by the small electron Yukawa coupling. In particular, if both beams are given left-handed polarisations, only the $e^+ e^- \rightarrow \tilde{e}_R \tilde{e}_L^+$ process is possible. As this reaction proceeds exclusively via neutralino exchange in the t -channel, its size gives insight to the neutralino mixing [86].

Figure 10 shows the spectra of muon energies in di-muon events, under the same conditions ($\int \mathcal{L} dt = 500 \text{ fb}^{-1}$ at each of the beam-polarisations). In this analysis, the generic selection is supplemented by demanding that both lepton candidates are identified as muons. The same criteria as for \tilde{e} are

³ Equation (2) shows that the lighter state receives a lower fraction of the total initial energy than the heavier state in $\tilde{e}_R \tilde{e}_L$ production, so that the upper edge from the \tilde{e}_R decay is lower than what it is in the symmetric case in $\tilde{e}_R \tilde{e}_R$ production seen in Fig. 9a.

used to separate $\tilde{\mu}_R$ and $\tilde{\mu}_L$ candidates. The selection efficiency is larger for $\tilde{\mu}$ than for \tilde{e} : it is 65 and 60 % for $\tilde{\mu}_R$ and $\tilde{\mu}_L$, respectively. This is due to the t -channel contribution to \tilde{e} : even though the sleptons aren't highly boosted, their decay products nevertheless carry the imprint of the initial slepton angular distribution. Therefore, the cuts designed to remove backgrounds at low angles to the beam-axis or with low missing transverse momentum tend to remove more \tilde{e} events than $\tilde{\mu}$ ones. Using the same procedure to extract the edges, the LSP and smuon masses can be determined to $M_{\tilde{\chi}_1^0} = 95.47 \pm 0.38$ GeV and $M_{\tilde{\mu}_R} = 126.10 \pm 0.51$ GeV, once again in good agreement with the true masses in the STCx model: $M_{\tilde{\chi}_1^0} = 95.59$ GeV and $M_{\tilde{\mu}_R} = 126.16$ GeV. It can be noted that, as expected, the SUSY background to $\tilde{\mu}_L \tilde{\mu}_L$ production is much lower than for $\tilde{e}_L \tilde{e}_L$ production, and that a significant signal would be expected even if the branching ratio to the direct decay would only be a few percent. Combining the measurement of the LSP mass from the right-handed selectron and smuon analyses yields an uncertainty of $\sigma_{M_{\tilde{\chi}_1^0}} = 147$ MeV, ie. slightly above 1 permille.

In addition to the mass determination from the spectrum edges, the mass of both \tilde{e}_R and $\tilde{\mu}_R$ can be determined by scanning the production threshold near 250 GeV, as illustrated by Fig. 11. Close to threshold, the cross section is obviously small, but on the other hand, the signal is very clean: since the sleptons are produced almost at rest, and they undergo two-body decays, the decay products are almost mono-energetic. In addition, in STCx the mass-difference between the LSP and \tilde{e}_R and $\tilde{\mu}_R$ is rather large, so that even in a decay at rest the produced leptons have momentum ~ 25 GeV. Hence, by selecting events with two opposite-sign, same-flavour lep-

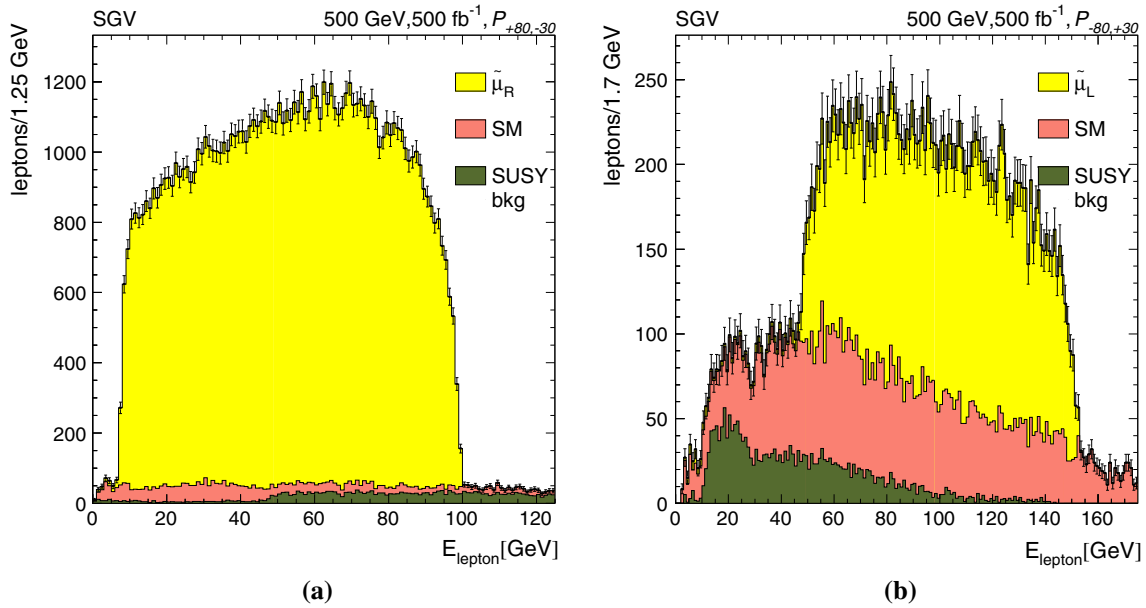


Fig. 10 Muon spectra from smuon decays and background. **a** Muons from $\tilde{\mu}_R$ decays and **b** muons from $\tilde{\mu}_L$ decays

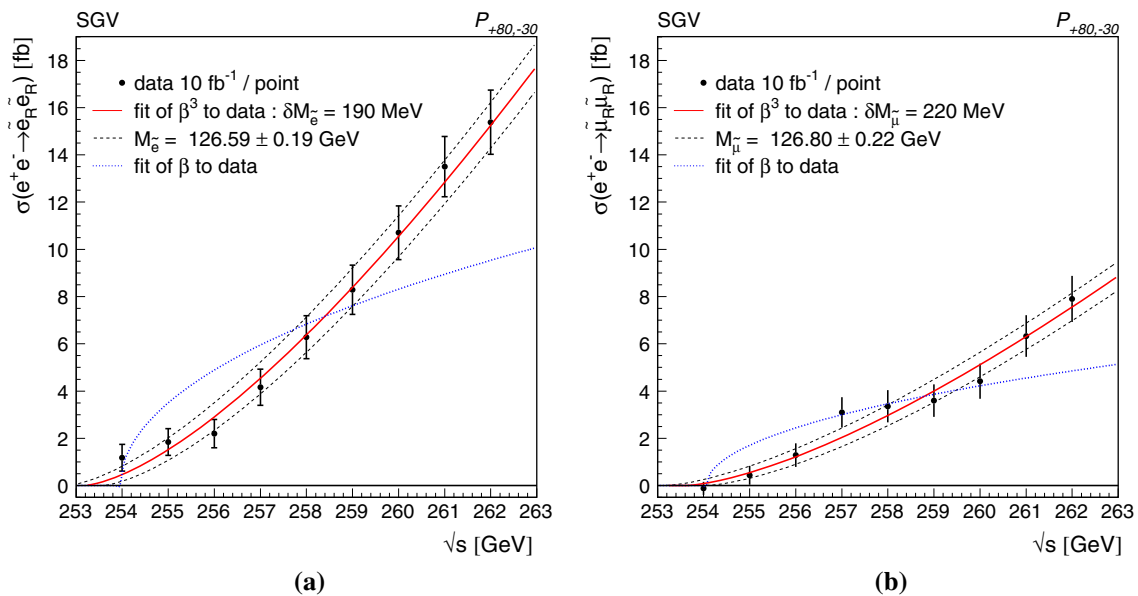


Fig. 11 Threshold scans at the $e^+e^- \rightarrow \tilde{e}_R\tilde{e}_R$ (a) and $e^+e^- \rightarrow \tilde{\mu}_R\tilde{\mu}_R$ (b) thresholds

tons with large acoplanarity, and with momentum in a narrow window, a large efficiency, low background sample can be obtained, and an significant excess of events can be obtained quite close to the threshold. For STCx, it was demanded that the two leptons should have momentum between 20 and 37 GeV, and both the acoplanarity and the acollinearity angles should be below 3.1 radians. With these cuts, the efficiency for the signal is between 85 and 95 %, and the signal-to-background ratio is above 1 for almost all points, the exception being the lowest E_{cms} for the $\tilde{\mu}_R$.

Sleptons are scalars – if not the new physics the observations have revealed is not supersymmetry. Therefore, it is certain that slepton-pairs are produced in a P-wave, and hence that the rise of the cross section with increasing E_{cms} is proportional to $\beta^3 = \left[1 - 4(M_{\tilde{\ell}}/E_{\text{cms}})^2\right]^{3/2}$. Investing a few months of ILC beam-time,⁴ the mass of \tilde{e}_R can be determined

⁴ Note that this centre-of-mass energy range is also optimal for studying the properties of the Higgs boson with the model-independent recoil-mass method.

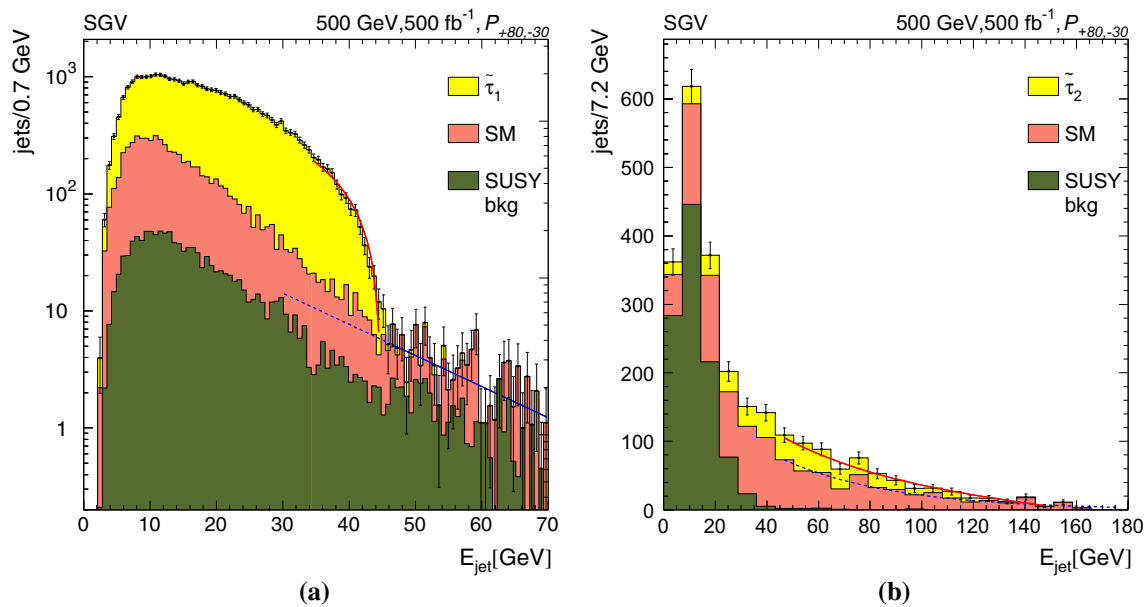


Fig. 12 The τ -jet spectra in $\tilde{\tau}_1$ decays and SM as well as SUSY background, with an endpoint fit (a), and τ -jet spectra in $\tilde{\tau}_2$ decays and background, with endpoint fit (b)

to ~ 190 MeV, and at the same time that of $\tilde{\mu}_R$ to ~ 220 MeV, by fitting the observed background-subtracted cross section to $\beta^3(E_{\text{cms}})$.

In addition, one can test the hypothesis that the observed states are spin-1/2 particles, rather than scalars. If the particles indeed have spin-1/2, the pairs are produced in an S-wave, and the rise of the cross section with increasing E_{cms} would be proportional to β rather than β^3 . The dashed curve in Fig. 11 is the best fit of $\beta(E_{\text{cms}})$ to the data. For the \tilde{e}_R case the fit-probability is $< 10^{-9}$, while it is 7×10^{-5} in the $\tilde{\mu}_R$ case. The spin-1/2 hypothesis would therefore be excluded by the data.

4.2.2 The $\tilde{\tau}$ -sector

Especially in $\tilde{\tau}$ -coannihilation scenarios, a precise determination of the $\tilde{\tau}$ sector is essential in order to be able to predict the expected relic density with sufficient precision to test whether the $\tilde{\chi}_1^0$ is indeed the dominant Dark Matter constituent. The $\tilde{\tau}_1$ -pair production is different from \tilde{e}_R - or $\tilde{\mu}_R$ -pair production in several aspects: The mass difference to the LSP is much smaller, meaning that the τ spectrum is softer than the spectrum of the leptons in \tilde{e}_R or $\tilde{\mu}_R$ decays. In addition, τ leptons decay, further softening the spectrum of observed particles, and making the particle identification requirements less effective in background suppression. This leads to a signal that much more resembles that of $\gamma\gamma$ events, but also more resembles di-boson events decaying to $\nu\tau\nu$. The generic slepton selection therefore needs to be supplemented by several further criteria to reduce these sources

of background: The requirements on E_{vis} and M_{miss} are strengthened to < 120 and > 250 GeV, respectively, and the visible mass, M_{vis} , should be below $M_Z - 5$, which reduces the di-boson background. The cosine of the direction of the missing momentum is required to be between -0.8 and 0.8 , M_{vis} should be above 20 GeV, and the total energy observed below 30 degrees to the beam-axis should not exceed 2 GeV. This selection reduces the $\gamma\gamma$ background, which is then further decreased by a cut on the likelihood that the event is a $\gamma\gamma$ event. Finally, to reduce the SUSY background from \tilde{e}_R - or $\tilde{\mu}_R$ -pair production, as well as from di-boson events, it is required that the event is not identified as a di-electron or di-muon event. With these cuts, the selection efficiency for $\tilde{\tau}_1$ -pair production is 17%.

Only the upper endpoint can be measured in $\tilde{\tau}_1$ production: due to the decay of the τ , the lower endpoint is only visible as a knee in the spectrum of the decay-products of the τ . Because of the small mass-difference between the $\tilde{\tau}_1$ and $\tilde{\chi}_1^0$, this knee is in a region where the spectrum is strongly distorted by the cuts removing the $\gamma\gamma$ background. Contrary to the case for \tilde{e} or $\tilde{\mu}$, the upper kinematic limit is not an edge, but the endpoint of the spectrum of τ decay-products. This endpoint is determined by fitting the background in the region well above the endpoint and then fitting a signal contribution in the data above the extrapolated background fit.

Figure 12 shows the energy-spectrum at $E_{\text{cms}} = 500$ GeV of selected τ -jets for an integrated luminosity of 500 fb^{-1} , and polarisation $\mathcal{P}_{+80,-30}$. In the case of $\tilde{\tau}_1$ production, the endpoint could be determined to be $E_{\text{endpoint}} = 44.49^{+0.11}_{-0.09}$ GeV, corresponding to an uncertainty of $M_{\tilde{\tau}_1}$ of

200 MeV, if an uncertainty on the LSP mass of ~ 100 MeV is assumed. Similarly, the $\tilde{\nu}_\tau$ mass could be determined with an uncertainty of 5 GeV.

In [83], where a model quite similar to STCx has been studied, it is found that, in addition to $M_{\tilde{\tau}_1}$, the production cross section for both these modes can be determined at the level of 4%, and the polarisation of τ -leptons from the $\tilde{\tau}_1$ decay, which gives access to the $\tilde{\tau}$ and $\tilde{\chi}_1^0$ mixing,⁵ could be measured with an accuracy better than 10% from shape of the π spectrum in the $\tau \rightarrow \pi^+ \nu_\tau$ mode or to better than 5% by a template fit of $R = E_\pi/E_{jet}$ in the $\tau^- \rightarrow \rho^- \nu_\tau \rightarrow \pi^- \pi^0 \nu_\tau$ (and c.c.) mode.

4.2.3 The sneutrinos

While the vast majority of sneutrino decays proceeds to a completely invisible final state, the $\tilde{\nu}_\tau$ has a branching fraction of about 5% to $\tilde{\tau}_1 W$. In this situation there are two possible strategies: (a) search for the completely invisible final state via its recoil against a hard photon from initial state radiation in analogy to Sect. 4.1.3 and (b) select $\tilde{\nu}_\tau$ pair events where at least one visible decay occurs. Neither case has yet been studied in detailed simulations, but we will sketch the strategies here.

In the case of the ISR recoil, the situation is more difficult than for $\tilde{\chi}_1^0$ -pair production since the cross section for the low-background polarisation $\mathcal{P}_{+80,-30}$ is about one order of magnitude smaller than for the $\tilde{\chi}_1^0$ case. At the same time, due to the larger mass of the sneutrinos, the energies of the photons are smaller, thus buried in the steep shoulder of the $\tilde{\chi}_1^0$ spectrum [87]. Therefore, the $\mathcal{P}_{-80,+30}$ combination seems more promising. In this case, the sneutrino-pair production cross section is an order of magnitude larger than the cross section of $\tilde{\chi}_1^0$ pair production, and of roughly the same size as the $\tilde{\chi}_1^0$ cross section in the other polarisation, cf. Table 7. The price to pay is a background from SM neutrino-pair production which is about a factor of 5 larger than in the $\mathcal{P}_{+80,-30}$ case [84]. This means that the control of systematic uncertainties becomes even more important than in the classic $\tilde{\chi}_1^0$ case. However, due to the lower photon energy endpoint, a large part of the photon energy spectrum will be signal free, which should give an excellent possibility to constrain absolute normalisation uncertainties as well as shape uncertainties, arising e.g. due to the finite knowledge of the beam energy spectrum. Therefore, based on the experience from radiative neutralino production, we expect that both cross-section and mass measurements are possible, but would need a quantitative study.

The visible decays of the $\tilde{\nu}_\tau$ lead to a rather unique final state with a τ , a (hadronic) W and large missing four-

momentum. SM background from $WW \rightarrow \tau \nu_\tau q \bar{q}'$ as well as the main SUSY background from $\tilde{\chi}_1^\pm \tilde{\chi}_1^\pm \rightarrow \tilde{\tau}_1 \nu_\tau \tilde{\chi}_1^0 W$ can be reduced very effectively by choosing $\mathcal{P}_{+80,-30}$, since the polarisation dependence for the pure s -channel $\tilde{\nu}_\tau$ is much weaker. Furthermore, both backgrounds feature different kinematics from the signal, since the τ and the W stem from different hemispheres, and not from the same as in the signal case, which can be exploited efficiently once the masses of the $\tilde{\tau}_1$ and $\tilde{\chi}_1^\pm$ have been measured. The SM WW background can be further suppressed by exploiting the forward-backward asymmetry [83]. Once a sufficiently clean signal has been selected, the $\tilde{\nu}_\tau$ mass can be determined from the endpoints of the W energy spectrum (cf. Sect. 4.1.2), based on the $\tilde{\tau}_1$ mass measured in direct $\tilde{\tau}_1$ -pair production as described above. Similar to the ISR recoil case, this analysis seems feasible, but it awaits a detailed simulation study for quantitative conclusions.

Thus, the currently most obvious way to access the $\tilde{\nu}$ mass are the $\tilde{\chi}_1^\pm$ cascade decays discussed in Sect. 4.1.2.

4.3 Analysis of sleptons in cascade decays

A particularly interesting channel for the determination of slepton properties is $e^+e^- \rightarrow \tilde{\chi}_2^0 \tilde{\chi}_2^0$ and the $\tilde{\chi}_2^0$ decay to $\tilde{\mu}_R \mu$ (or equivalently to $\tilde{e}_R e$), even if the branching ratio is at the level of a few percent as in STCx. These cascade decays can be fully kinematically constrained at the ILC, and would promise to yield even lower uncertainties on the $\tilde{\mu}_R$ and \tilde{e}_R masses than the threshold scans, of the order of 25 MeV. This is estimated on an earlier study in a scenario with about twice as large branching ratios for the considered decay mode, where a precision of 10 MeV [88] was found. The corresponding distribution of the reconstructed $\tilde{\mu}_R$ mass is shown in Fig. 13a, including all SM and SUSY backgrounds.

Also for the study of the $\tilde{\tau}_1$, the channel $e^+e^- \rightarrow \tilde{\chi}_2^0 \tilde{\chi}_2^0$ and the $\tilde{\chi}_2^0$ decay to $\tilde{\tau}_1 \tau$ is quite powerful. This decay channel has a much larger branching ratio than the electron and muon channels, but the presence of the neutrinos in the decay of the τ prevent the exact kinematic reconstruction of the events. However, approximate reconstruction is still possible, as shown in Fig. 13b. Potentially, this method could yield comparable results to a threshold scan.

5 LHC-ILC interplay

In this section, we employ the simulation studies based on the STCx scenarios to illustrate how discoveries and measurements at the LHC and a future linear collider like the ILC could work together to gain as precise knowledge as possible about the origin of the Beyond-the-Standard-Model (BSM) observations.

⁵ Interaction of sfermions and gauginos conserve chirality, while the Yukawa interaction of the Higgsinos flips chirality.

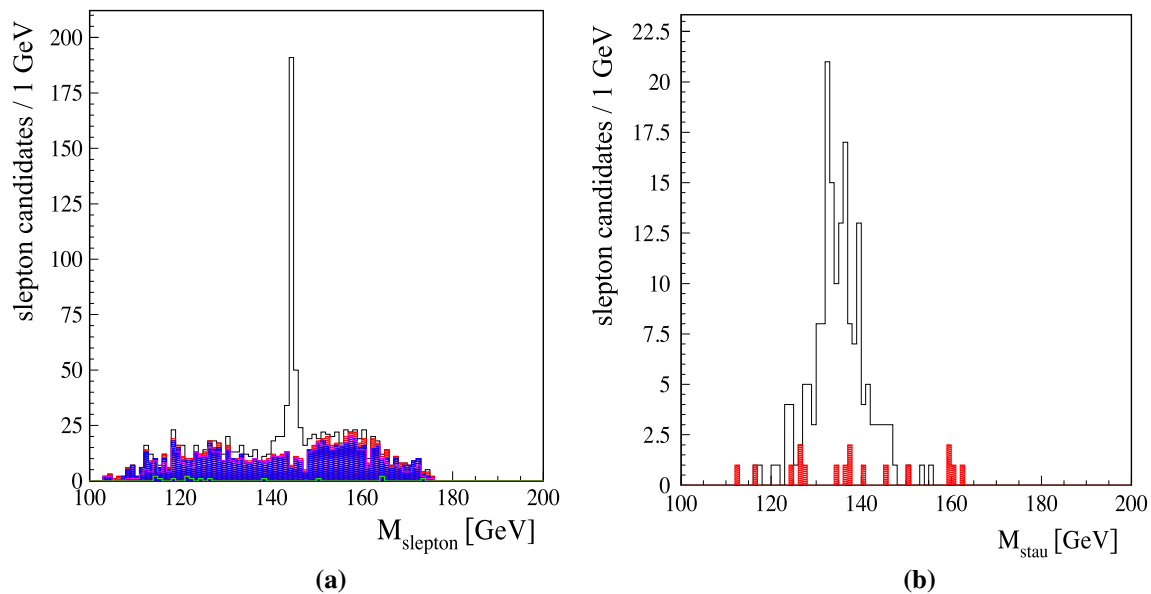


Fig. 13 Reconstruction of slepton masses from $\tilde{\chi}_2^0 \tilde{\chi}_2^0 \rightarrow \tilde{l} \tilde{l} l$ in SPS1a, which has a very similar spectrum to our case. We show the reconstructed $\tilde{\mu}_R$ mass (a) and the reconstructed $\tilde{\tau}_1$ mass (b). From [88]

5.1 Discoveries at the LHC

By construction, several sectors of the STCx spectra offer discovery opportunities at the LHC. For instance the left-handed selectron and smuon could be seen early if their branching ratio for the direct decay $\tilde{\ell}_L \rightarrow l \tilde{\chi}_1^0$ is large, cf. Sect. 2.1. The right-handed sleptons, on the other hand, are much harder to detect at the LHC, due to the – for the same mass values – lower production rates, and in particular in the STCx points due to their smaller mass difference, which leads to softer leptons in the visible final state. The $\tilde{\tau}_1$ and $\tilde{\tau}_2$ will be very hard to observe.

Figure 14 summarises the significances obtained by the analyses presented in Sect. 3 as a function of the integrated luminosity and as a function of the assumed systematic uncertainty on the background estimate. The first significant deviation of the coloured sector of the STCx scenarios from the SM would appear in the single-lepton channel at the LHC, caused by a mix of top- and bottom-squark pair production, as well as squark-gluino production. Assuming a systematic uncertainty of 15% on the background prediction, a 5σ deviation could be visible with less than 50 fb^{-1} . The amount of integrated luminosity required rises strongly with the masses of the top and bottom squarks, as can be seen by comparing Fig. 14a with the lower top and bottom-squark masses in model STC8 to Fig. 14c, where the same is shown for the model STC10 with 200 GeV higher top- and bottom-squark masses. From the existing LHC analyses, one would not necessarily expect a specialised search for direct top-squark production to be one of the first discovery channels. However, the limits on direct top-squark production are usually determined

for one or maybe two decay channels, assuming that direct top-squark pair production is the only production mechanism of SUSY particles, while in the full models there are several production and decay channels contributing to the discovered signal. In our case, we see also decays of top and bottom squarks to final states with higher-mass neutralinos and charginos, and contributions from gluino-pair production. If, however, the gluino mass would be higher, the direct top- and bottom-squark production would be the main contribution, leading to a lower significance and later discovery.

In the case of STC8, the dedicated search for bottom squarks decaying directly into a b-quark jet and the LSP would report a 5σ deviation from the SM with about 90 fb^{-1} (assuming a systematic uncertainty of 15%). With the higher bottom-squark mass of STC10, however, a substantially larger amount of integrated luminosity, 300 fb^{-1} , would be required. This is due to the fact that the bottom-squark selection has a much higher purity, in particular it is less sensitive to gluino-squark production than the top-squark search. Thus the difference in integrated luminosity required to observe a signal in these channels does not necessarily correlate with the masses of the targeted squarks.

After an integrated luminosity of 150 fb^{-1} , the multi-lepton channel would report a 5σ deviation from the SM in either STC8 or STC10. Since b-tagging does not play a role in this analysis, it will be highly likely that this deviation is not caused by third-generation partners, but by lighter sparticles, i.e. electroweakinos and/or sleptons. The variation of the excess over the numerous signal regions gives a hint that several different sparticles with sizeable mass differences contribute to the overall signal. For the expected

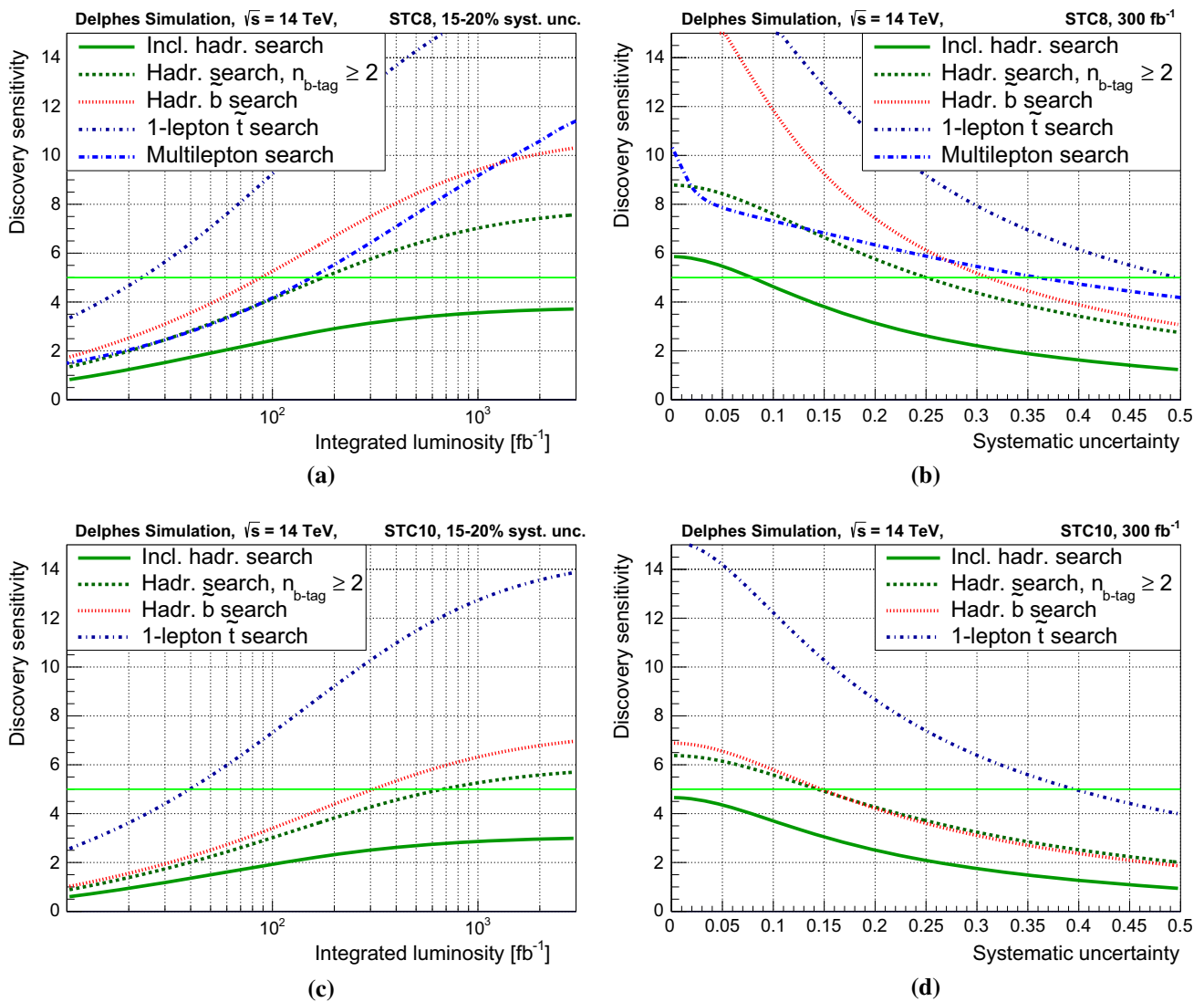


Fig. 14 LHC searches: expected significance as a function of luminosity and of the systematic uncertainty, respectively, for the two signal scenarios STC8 (a, b) and STC10 (c, d). For plot a, c we assume a systematic uncertainty of 15% for the bottom- and top-squark search,

and 20% for the other searches. As the spectrum of the electroweak sparticles is the same for STC8 and STC10, we show the multi-lepton analysis which focuses on the electroweakinos only for STC8

significance shown in Fig. 14 we combine the results of all search regions [89–91]. The prediction for the non-prompt background is the most controversial part of this analysis, since the fake rate has to be assumed. With the fake rate increased by a factor of 2, the discovery would require an integrated luminosity of 200 fb⁻¹ instead of 150 fb⁻¹.

A further hint towards the existence of rather light third-generation partners would come a little later from the inclusive hadronic search: While this channel would remain at the 2 to 3 σ -level before the High-Luminosity LHC when no b-tagging is applied, this could be enhanced in the case of STC8 to the 5 σ -level after less than 200 fb⁻¹ by requiring two jets to be identified as b-quark jets, as shown in Fig 14. In STC10,

about 600 fb⁻¹ would be needed for a discovery in this channel. In addition, it will be extremely difficult to separate the contributions from direct top- and bottom-squark production and gluino decays via the third-generation squarks in this analysis.

All search channels show strong dependency on systematical uncertainties at different pile-up and higher luminosity scenarios, as shown in Fig. 14b, d. In particular the single-lepton stop (Sect. 3.3) and the hadronic searches would profit significantly from an improved understanding of the background level beyond the 15–20% assumed as default here. The hadronic search requiring two b-tagged jets (Sect. 3.2) and the hadronic bottom-squark search (Sect. 3.1)

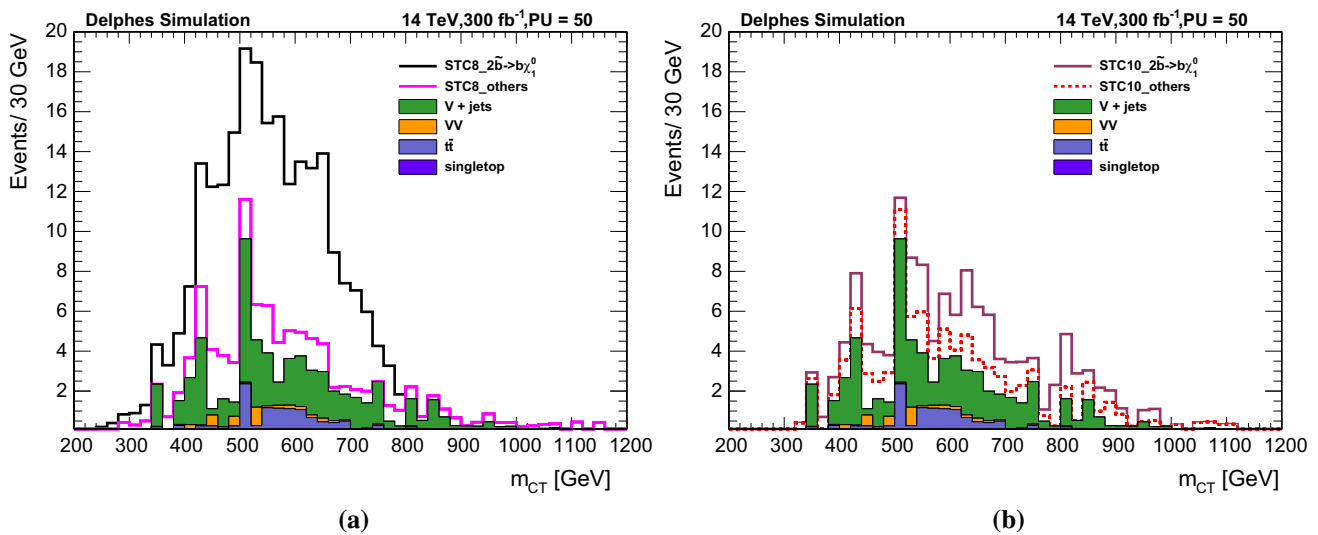


Fig. 15 LHC bottom-squark search: comparison of the m_{CT} distribution for signal and background from SM and other SUSY processes for STC8 (a) and STC10 (b). All SUSY processes from the STCx models are considered, with the signal being stacked on top of the stacked background

are most susceptible to systematic uncertainties. For STC8-like masses, they would miss the 5σ -level with 300 fb^{-1} if the systematic uncertainty on the background was larger than 25 and 30%, respectively, while in the case of STC10 a 5σ discovery is only possible if the backgrounds are controlled to better than 15%. The single-lepton search is, not surprisingly, more robust and would still reach 5σ with uncertainties of 50% in the case of STC8 and 40% in the case of STC10. The sensitivity of the multi-lepton search depends on the significance in the 45 different search bins. With decreasing systematic uncertainty, the contribution of the low m_T signal regions gains significance, leading to a steeper rise in the sensitivity for very small systematic uncertainties, as shown in Fig. 14c. However, we expect systematic uncertainties of the order of 20% for this analysis.

5.2 Signal characterisation at the LHC

Once a clear deviation from the SM has been discovered, the immediate question will be the origin of this deviation. Given the fact that at this stage neither the masses of the produced particles, nor their decay chains and branching ratios are known, it seems highly unlikely that the contributing production modes could be identified at that stage.

The most promising candidates for isolation of a sufficiently pure sample of an individual decay chain are the direct slepton decays $\tilde{\ell}_L \rightarrow l\tilde{\chi}_1^0$ and the direct bottom-squark decay $\tilde{b}_1 \rightarrow b\tilde{\chi}_1^0$. These could then be used to obtain information on the masses of the produced particles via kinematic edges.

For instance, the so-called boost-corrected contramass (m_{CT}) [34,35], which is defined as

$$m_{CT}^2(j_1, j_2) = [E_T(j_1) + E_T(j_2)]^2 - [\vec{p}_T(j_1) - \vec{p}_T(j_2)]^2 = 2p_T(j_1)p_T(j_2)(1 + \cos \Delta\phi(j_1, j_2)),$$

can be used for extracting information from events in which two heavy particles decay into a visible part j_i and missing energy. This mass is invariant under equal and opposite boosts of the parent particles in the transverse plane. For parent particles produced with small transverse boosts, m_{CT} is bound from above by an analytic combination of particle masses.

In the case of the direct bottom-squark decay, the distribution of the contramass of the two jets, $m_{CT}(j_1, j_2)$, is expected to show an edge at

$$m_{CT}^{\text{edge}} = (m_{\tilde{b}_1}^2 - m_{\tilde{\chi}_1^0}^2)/m_{\tilde{b}_1}, \tag{4}$$

which equals 780 GeV for STC8, and 1000 GeV for STC10.

The expected distributions are shown in Fig. 15 for an integrated luminosity of 300 fb^{-1} after the selection presented in Sect. 3.2. With this amount of integrated luminosity, the edge position in model STC8 could be determined, while for STC10 this would be possible only with the luminosity that can be reached at the HL-LHC, 3000 fb^{-1} .

The edge is smeared out by the jet energy resolution, which has still to be determined for the 14 TeV data with the corresponding jet reconstruction at higher pile-up. Assuming a resolution of 10% for $p_T(j) = 300 - 500\text{ GeV}$ jets (which is a typical transverse momentum for jets from bottom-squark decays, as shown in Fig. 4), motivated by a corresponding 7 TeV measurement [92], we can deduce a resolution of about 15% for the m_{CT} variable, corresponding to about 120 GeV in STC8 and 150 GeV in STC10. The edge position gets further diluted or even biased by the SM background as well

as by the SUSY background, in combination with fluctuations due to low statistics. While the situation could be partly improved by removing the SM background based on prediction from simulation, which is expected to be well understood with 300 fb^{-1} of data, the SUSY background remains a priori unknown and can distort the determined endpoint as shown in the following.

In order to determine the mass edge, one could e.g. exploit a typical edge-finder like the so-called edge-to-bump method [93]. To test the capability of this method for the model STC8, we generate 1000 times pseudo-data from the distribution shown in Fig. 15a, and determine the edge position with the edge-to-bump method. The mean of the fitted value is at 832 GeV with an RMS of 114 GeV , which is compatible with the expected value of 780 GeV . This RMS is expected from the resolution of the m_{CT} variable. With ten times more statistics from the HL-LHC, this uncertainty could be reduced roughly by a factor of 3. Without further knowledge about the $\tilde{\chi}_1^0$, the determined endpoint can be interpreted as lower limit on the bottom-squark mass using Eq. (4), assuming a mass-less neutralino, of $832 \pm 114 \text{ GeV}$. Higher masses of the neutralino would lead to higher bottom-squark masses.

Analogously, an edge in the contranverse mass spectrum would be expected from the decays of \tilde{e}_L and $\tilde{\mu}_L$ near $m_{CT}^{\text{edge}}(l_1, l_2) = 175 \text{ GeV}$. Without any information from ILC, this would yield a lower limit on the slepton mass.

5.3 Discoveries at the ILC

The first channel to manifest itself at the ILC depends on the assumed running scenario. If the ILC starts out as a Higgs factory at $E_{\text{cms}} = 250 \text{ GeV}$, then $e^+e^- \rightarrow \tilde{\tau}_1\tilde{\tau}_1$ and $\tilde{\chi}_1^0\tilde{\chi}_1^0\gamma$ would be the first observable channels, while \tilde{e}_R - and $\tilde{\mu}_R$ -pair production is just beyond reach. The measurement of the $\tilde{\tau}$ mass, however, would be challenging close to threshold, since both upper and lower edge of the τ -lepton energy spectrum would be in the region affected by background from multi-peripheral two-photon processes.

On the other hand, the LSP mass and pair-production cross section could be measured at least with a few percent precision from the energy (or recoil mass) spectrum of the accompanying initial state radiation photons as discussed in Sect. 4.1.3. Although that study has been performed at a higher centre-of-mass energy, the quality of the mass determination is expected to be comparable at $E_{\text{cms}} = 250 \text{ GeV}$, since the photon energy spectrum less spread out while the size of the cross section is similar. Since the neutralino pair-production is dominated by t -channel selectron exchange, the mass of the lighter selectron and its helicity can be determined from the measurement of the polarised cross sections. However, this requires a sizeable amount of integrated lumi-

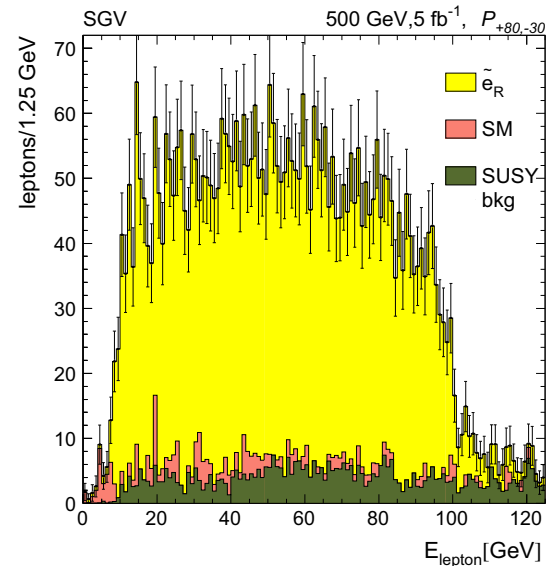


Fig. 16 Energy spectrum of events with e^+e^- and missing four-momentum. The assumed luminosity of 5 fb^{-1} corresponds to 1 week data taking at design luminosity

nosity collected with right-handed electrons and left-handed positrons in order to control the SM neutrino background.

In the recently published running scenario [27], the ILC starts up in its TDR baseline configuration at $E_{\text{cms}} = 500 \text{ GeV}$. In this case, the picture changes drastically with already a modest amount of data, since very first evidence for BSM at the ILC would be observed after a few days of running from selectron pair production. Figure 16 shows the selectron signal expected with only 5 fb^{-1} , allowing already a first determination of both the selectron and the LSP masses according to the technique described in Sect. 4. Since the lighter set of sleptons must have a 100% branching ratio to lepton and LSP, their production cross sections can be measured unambiguously. In particular for the selectron and smuon case, where the mixing is typically small, the coupling can be extracted once the mass is known, thus enabling the first verification that the couplings of the exotic states equal those of their SM partners – a fundamental property of supersymmetry!

Beyond the specific case of STCx, any sparticle lighter than half the centre-of-mass energy of an e^+e^- collider will be observable. If furthermore, like in the STCx models, R -parity is conserved so that the LSP is stable, the NLSP will have a 100% BR to the LSP and the corresponding SM particle. This means that the search for NLSP pair production at the ILC can be seen as a loop-hole free search for SUSY [94]. The case of a general STC-like model, where the NLSP is the $\tilde{\tau}_1$, is illustrated in Fig. 17, showing the exclusion and discovery reach for the NLSP at the ILC is shown in the plane of the only free parameters, i.e. $M_{\tilde{\chi}_0^0}$ and M_{NLSP} . It should be pointed out that the case with the NLSP being the $\tilde{\tau}_1$ is one

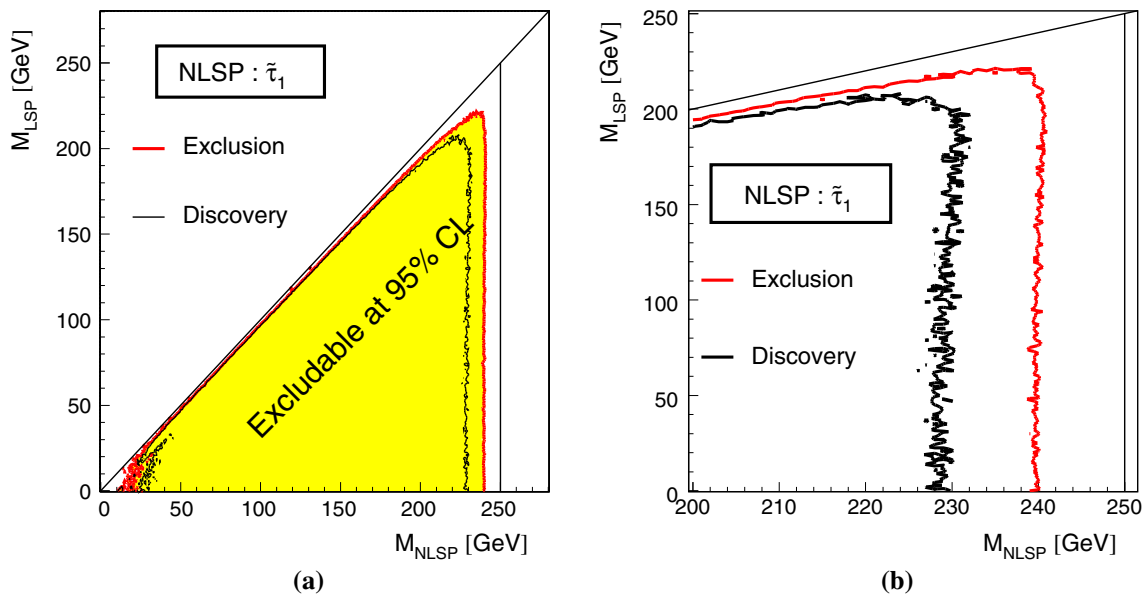


Fig. 17 Discovery reach for a $\tilde{\tau}_1$ NLSP after collecting 500 fb^{-1} at $E_{\text{cms}} = 500 \text{ GeV}$ at the ILC. *Left plot a* full scale, *right plot b* zoom to last few GeV before the kinematic limit. From [94]

of the most experimentally difficult ones, due to the need to detect τ -leptons in the final state.

5.4 Signal characterisation at the ILC

According to the currently favoured running scenario for the ILC [27], 500 fb^{-1} would be collected at $E_{\text{cms}} = 500 \text{ GeV}$ within the first 4 years of operation. For these data, a sharing between the four possible configurations with different polarisation signs is foreseen: 40 % of the data would be collected at each of the configurations $\mathcal{P}_{-80,+30}$ and $\mathcal{P}_{+80,-30}$, while 10 % would be collected at each of the $\mathcal{P}_{-80,-30}$ and $\mathcal{P}_{+80,+30}$ ones. This would allow a first assessment of all SUSY particles with masses below 250 GeV, including their masses and mixings, with a precision typically a factor 1.6 worse than the values quoted in Sect. 4.

After the initial run at $E_{\text{cms}} = 500 \text{ GeV}$, it is foreseen the lower the centre-of-mass energy to scan the top-pair production threshold and to run near the Zh threshold for a high-precision determination of the Higgs-boson mass and its coupling to the Z boson. These runs would also be of high interest for SUSY spectroscopy:

Running near the Zh threshold could include a scan of the threshold for pair production of the lighter sleptons as shown in Fig. 11, which provides mass measurements of the \tilde{e}_R and $\tilde{\mu}_R$ with precisions of 190 MeV and 220 MeV, respectively. The shape of the threshold as well as angular distributions identify the produced partners of electrons and muon as scalar particles [95].

At or slightly above the $t\bar{t}$ threshold, the cross section for $\tilde{\tau}_1\tilde{\tau}_2$ mixed production could be measured with high precision due to the absence of the $\tilde{\tau}_2$ -pair production background which limits the purity of this measurement at $E_{\text{cms}} = 500 \text{ GeV}$. This provides an interesting possibility to determine the $\tilde{\tau}$ mixing and $\tan\beta$. Together with the masses of the $\tilde{\tau}_1$ and the $\tilde{\chi}_1^0$ and the $\tilde{\chi}_1^\pm$ mixing determined at $E_{\text{cms}} = 500 \text{ GeV}$ (cf. Sects. 4.2.2 and 4.2.1), these are important inputs for the prediction of the dark matter relic density within the MSSM, since in the STCx scenarios LSP pair annihilation and $\tilde{\tau}_1$ -coannihilation contribute about equally to the cosmic dark matter annihilation. By comparing the predicted value for the relic density to the cosmologically observed one, the $\tilde{\chi}_1^0$ can be either identified as the sole constituent of dark matter, or as being responsible for only a fraction of the observed relic density. This has been explicitly demonstrated in a SUSY scenario with an electroweak sector very similar to the STCx cases [96].

After a luminosity upgrade, the integrated luminosity at 500 GeV is then foreseen to be increased to 4 ab^{-1} , with the same polarisation sharing as before, enabling a full BSM precision program, which reaches the permille-level for many observables. While the currently assumed running scenario is based on guaranteed measurements only, it will be adjusted to future discoveries by scheduling further threshold scans as well as runs at dedicated energies not far above important thresholds. Such special runs give e.g. important information for parameter determination in the neutralino sector, which in turn enables predictions of the masses of the kinematically not accessible states [97]. The results of the initial run at

$E_{\text{cms}} = 500$ GeV will give decisive input to determining the detailed running strategy.

5.5 Combining ILC and LHC

With ILC information on the lower part of the spectrum, the situation at the LHC changes drastically. While the clear advantage of the LHC is the larger kinematic reach for the production of the more heavy sparticles, disentangling their signals is challenging due to the multitude of decay modes, most of them with small branching ratios. Thus the information from the ILC might provide the key to access all the information contained in the LHC data, on one hand by exploiting the knowledge of the lower parts of the decay chain in the data analysis, on the other by combining LHC and ILC results in global pMSSM fits. This has been pointed out in several previous studies [96, 98, 99]. Most of them, however, are based on scenarios with a light, sub-TeV, coloured sector, which is by now excluded by LHC measurements. Thus we highlight here the specific possibilities arising in the more challenging STCx benchmark points.

First of all, the determined edge position from bottom-squark pair production could be turned into a measurement of the bottom-squark mass by adding the information from ILC about the $\tilde{\chi}_1^0$ mass, which can be determined at the ILC with a negligible uncertainty. Using Eq. (4), we find a bottom-squark mass of 843 ± 115 GeV, which is compatible with the true value of 795 GeV, as well as with the value obtained for a mass-less LSP. Even with HL-LHC precision of 30–40 GeV, the hypothesis of a mass-less LSP would yield a bottom-squark mass compatible with the model value. However, already for an LSP mass of 200 GeV which could still be accessed at the ILC with $E_{\text{cms}} = 500$ GeV from radiative neutralino production (cf. Sect. 4.1.3), the bias due to the zero-mass hypothesis rises to 50 GeV and thus surpasses the statistical uncertainty on $m_{\text{CT}}^{\text{edge}}$.

In addition, we could use the measured bottom-squark mass to calculate the cross section for this process and compare it with the cross section times branching fraction determined above from counting the events in the signal region. While the mass determination is independent of the spin of the newly discovered particle, the measured event rate that can be related to the cross section (times branching fraction) depends on the spin of the new particle and therefore help identify whether the newly discovered particle is actually a SUSY particle or not. Final conclusions could only be drawn if the branching fraction can be determined in addition. For the latter, input from the ILC on the lower-mass sparticle spectrum might be exploited as well.

In the electroweakino sector, since now not only the masses, but also the mixings and decay modes of the lighter electroweakinos are known, they enable a significant

improvement of the analyses of LHC data. In the case of the multi-lepton analysis, the signal contribution from the lighter electroweakinos can be subtracted, giving access to the heavier electroweakinos not accessible at the ILC with $E_{\text{cms}} = 500$ GeV.

One example is given in the following. We want to study the decay of a $\tilde{\chi}_2^\pm \rightarrow \tilde{\chi}_1^\pm Z \rightarrow \ell^\pm \tilde{\nu} \ell^+ \ell^-$. Therefore, we select events with three leptons and a large amount of missing transverse energy. The opposite-sign same-flavour lepton pair $\ell^+ \ell^-$ covers the full information as regards the Z boson and can be identified by requiring the invariant mass as close as possible to the Z-boson mass. In the following we refer to the remaining lepton ℓ^\pm from the $\tilde{\chi}_1^\pm$ decay when mentioning the lepton, and assume that the masses of the $\tilde{\chi}_1^\pm$ and $\tilde{\nu}$ will be known with sufficient precision from ILC measurements, as discussed in Sect. 4.1.2. The invisible decay products of the $\tilde{\nu}$ lead to signatures with sizeable missing transverse energy. Unfortunately this is not the only source of missing transverse energy, since the decay of the other initial sparticles will also produce at least one LSP, hiding the information on the momentum of the $\tilde{\nu}$. In order to avoid this, we boost into the $\tilde{\chi}_1^\pm$ rest frame, where the lepton has a fixed energy E' which can be calculated by requiring energy conservation:

$$E'_{\text{lep}} = \frac{(M_{\tilde{\chi}_1^\pm})^2 + (m_{\text{lep}})^2 - (m_{\tilde{\nu}})^2}{2M_{\tilde{\chi}_2^\pm}} \approx 8.6 \text{ GeV}, \quad (5)$$

with the masses known from ILC: $M_{\tilde{\chi}_1^\pm} = 206.1$ GeV, $m_{\tilde{\nu}} = 197.3$ GeV and $m_{\text{lep}} \approx 0$ GeV. The transformation from the lab frame into the $\tilde{\chi}_1^\pm$ rest frame is done via the boost vector $\vec{\beta}$:

$$E'_{\text{lep}} = \gamma E_{\text{lep}} - \gamma \vec{\beta} \cdot \vec{P}_{\text{lep}}, \quad (6)$$

with $\gamma = 1/\sqrt{1 - \vec{\beta}^2}$. This vector has three degrees of freedom, the magnitude and two angles. For the angles we assume that the boost is parallel to the lepton. This is a good approximation in most cases, since the $\tilde{\chi}_1^\pm$ decay does not add much to the boost of the lepton. With this assumption we can calculate γ :

$$\gamma = \frac{1}{2} \left(\frac{E'_{\text{lep}}}{E_{\text{lep}}} + \frac{E_{\text{lep}}}{E'_{\text{lep}}} \right), \quad (7)$$

and we have the full information on the boost vector $\vec{\beta}$. As a next step we boost the $\tilde{\chi}_1^\pm$ back into the lab frame ($\vec{P}_{\tilde{\chi}_1^\pm} = +\gamma \vec{\beta} M_{\tilde{\chi}_1^\pm}$). As last step we add the four-momenta of the Z boson and the $\tilde{\chi}_1^\pm$ in order to calculate the invariant mass of $\tilde{\chi}_2^\pm$.

Figure 18 shows the $M_{\tilde{\chi}_2^\pm}$ by using the MC level information as well as reconstructed objects. The resolution gets

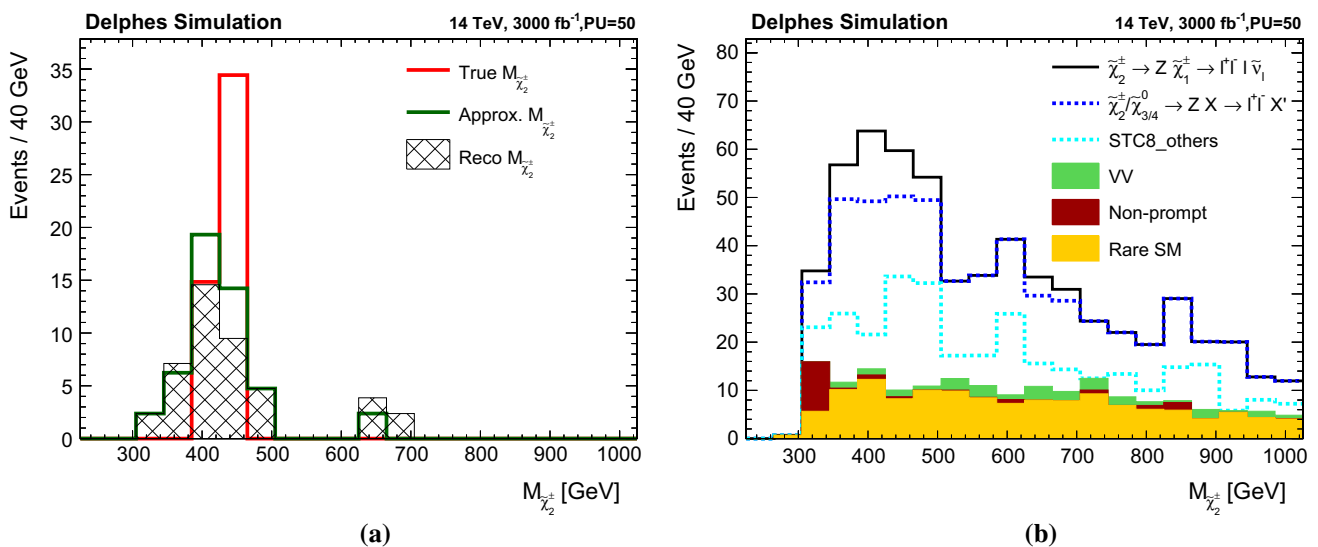


Fig. 18 $\tilde{\chi}_2^\pm$ mass information at LHC. The left plot **a** shows the MC truth information of the invariant mass obtained with the procedure described in the text as well the reconstructed $M_{\tilde{\chi}_2^\pm}$ for those events.

The right plot **b** shows the reconstructed $M_{\tilde{\chi}_2^\pm}$ for all events we would expect. There the SM and the SUSY events are stacked together

smearred by two different effects: first, the E'_{lep} is not fixed because of the natural widths of the $\tilde{\chi}_1^\pm$ and the $\tilde{\nu}$. Second, the boost vector $\vec{\beta}$ is not perfectly parallel to the lepton. Therefore, we expect to measure the $M_{\tilde{\chi}_2^\pm}$ to be 412 ± 43 GeV. In order to suppress the SM background we require exactly three leptons ($p_T = 25/15/10$ GeV), one opposite-sign same-flavour lepton pair with an invariant mass between 84 GeV and 96 GeV, at least one b-tagged jet ($p_T > 100$ GeV and $\eta < 2.4$), more than three jets ($p_T > 40$ GeV and $\eta < 2.4$) where the leading jet has $p_T > 120$ GeV and $E_T^{miss} > 200$ GeV. With this selection our signal consists dominantly of $\tilde{\chi}_2^\pm$ produced by stop decays, which has the best signal to background ratio. With a slightly softer selection we would also have sensitivity to direct $\tilde{\chi}_2^\pm \tilde{\chi}_m^n$ production, which also can be accessible at HL-LHC. Per construction the $M_{\tilde{\chi}_2^\pm}$ must be larger than $\sqrt{(M_{\tilde{\chi}_1^\pm})^2 + (M_Z)^2} > 200$ GeV. As first observation we see much more SUSY events than we would expect from our targeted decay chain. Most of these events include heavy electroweakinos ($\tilde{\chi}_2^\pm, \tilde{\chi}_3^0, \tilde{\chi}_4^0$) decaying via Z bosons. The third lepton stems from the other decay products, which in most cases are τ leptons. This signature carry mass information about the heavy charginos and would be worth to be studied with the hadronic τ lepton final states. The other SUSY events passing this selection contains slepton decays, which has a kinematic edge signature close to the Z mass. This kind of background could be studied further if one requires the invariant mass of the opposite-sing same-flavour lepton pair exactly at the position of the edge. Overall the peak from our targeted decay chain around 420 GeV is visible.

The obtained knowledge of the $\tilde{\chi}_2^\pm$ and $\tilde{\chi}_{3,4}^0$ masses in turn would add significantly to the physics case of a 1-TeV-upgrade of the ILC, or of an even higher energy e^+e^- collider like CLIC. Furthermore, the full knowledge of the electroweakino masses, mixings and decay modes could provide the decisive information to isolate a signal from top-squark production, e.g. in its largest decay mode $\tilde{t}_1 \rightarrow b\tilde{\chi}_2^\pm$, enabling a determination of the \tilde{t}_1 mass.

6 Conclusions

In this paper we discussed the complementarity and interplay of a proton-proton collider, the LHC, and an electron-positron collider, the ILC, in discovering new particles and in determining their properties. As example we used an R -parity and CP conserving supersymmetric model where the $\tilde{\tau}_1$ is the next-to-lightest supersymmetric particle and has a small mass difference of about 10 GeV to the lightest supersymmetric particle, the LSP, which is the lightest neutralino $\tilde{\chi}_1^0$. In such a scenario, $\tilde{\tau}_1$ -coannihilation allows for a sufficiently small dark matter relic density. All sleptons and electroweakinos have masses below 500 GeV, while the lightest coloured sparticles, the lighter top and bottom squarks, have masses around 800 or 1000 GeV. All other coloured sparticles are much heavier, up to 2 TeV.

We showed that such a scenario can easily be discovered at the LHC running at 13/14 TeV. In particular, this is true for the heavier selectrons and smuons, the heavier electroweakinos, as well as the lighter top and bottom squarks, if their

masses are not much higher than a TeV. Depending on the search channel, on the exact masses and on the achieved control of systematic uncertainties, the integrated luminosities to discover deviations from the SM expectation due to production of these sparticles range from 50 to 1000 fb⁻¹. The earliest discovery would come from the single-lepton stop search, followed by hadronic searches including b-tags. Inclusive hadronic searches would require systematic uncertainties to be controlled better than 10 % in order to achieve a 5σ discovery.

However, in most cases the observed deviations from the SM expectation cannot be attributed to a single process, but result from a mixture of e.g. diverse electroweakino processes or, in the case of the coloured sector, of stop, sbottom and gluino production. The best chances are to identify a single process with sufficiently high purity, in order to learn something about the properties of the produced sparticles originating from direct decays of the produced sparticle to its standard-model partner and the LSP. For the investigated scenarios, the direct decay has a sizeable branching fraction in the case of the heavier sleptons and the lighter bottom squark. Here, a kinematic edge can be isolated e.g. in the contranverse mass distribution. Without further knowledge of the mass of the LSP, the position of this edge can be converted into a lower limit on the sparticle mass.

As example, we analysed the case of $\tilde{b}_1 \rightarrow b\tilde{\chi}_1^0$, and found that the edge in the contranverse mass distribution for the model with bottom-squark mass could be determined with an uncertainty of about 115 GeV with an integrated luminosity of 300 fb⁻¹ at 14 TeV. Assuming that systematic uncertainties play only a minor role, this could be improved to about 30 GeV at the High-Luminosity LHC. For higher bottom-squark masses of about 1 TeV, the discovery is still possible, however, the uncertainties on the mass determination will be significantly larger due to strongly reduced number of signal events.

The ILC on the other hand would complement these spectacular discoveries at the LHC with a systematic precision analysis of the lower part of the spectrum, actually discovering some of the lighter states. In this paper, we especially present up-to-date detector simulation studies of the slepton sector at the ILC, both in the continuum and in threshold scans. In particular a sufficiently light selectron will lead to a striking signal within a few weeks of ILC operation. Already after the 500 fb⁻¹ collected in the first 4 years of ILC operation, this would allow a permille-level determination of the LSP mass, and the masses of the right-handed sleptons, improving further with the 4 ab⁻¹ foreseen for the full ILC program. In conjunction with threshold scans and operation with different beam polarisations, all sleptons and the lighter half of the electroweakino spectrum can be characterised with at least percent-level precision, including masses and mixing angles. This would demonstrate that the observed

new particles are indeed of a supersymmetric nature, and at least some of the parameters of the underlying SUSY model can be determined.

This information from the ILC then creates new opportunities to analyse the LHC data. Obviously, a precise determination of the LSP mass from the ILC can be employed to turn edge determinations into mass measurements. Even better, the detailed information from the ILC can be used in the analysis of the data themselves to disentangle the contributions of different production modes and to reconstruct quantities which are sensitive to masses of the heavier sparticles with more complex decay chains. As an example, we illustrated this in the case of the $\tilde{\chi}_2^\pm$. With the knowledge of the masses of the $\tilde{\chi}_1^\pm$ and the $\tilde{\nu}$ from the ILC, the signal can be isolated from the electroweakino mix and its mass can be reconstructed on an event-by-event basis with a resolution of about 50 GeV with an integrated luminosity of 300 fb⁻¹ at 14 TeV, with corresponding improvements at the High-Luminosity LHC.

Although we studied the capabilities and the interplay of LHC and ILC based on a specific example, many aspects are transferable to other scenarios which comprise new particles in the kinematic reach both colliders. In this context, it should be noted that the LHC in many cases the sensitivity to the lightest new physics states is significantly smaller than to some of the heavier states, and that some of the lighter states might even await explicit discovery at a lepton collider. We finally conclude that the combination of LHC and ILC data could reveal significantly more information as regards the properties and the origin of new particles than the results from either collider alone.

Acknowledgments We would like to thank the WHIZARD authors, the LC Generator Group as well as the ILD MC production team for their help in producing the large samples of events used in this work. The results presented could not be achieved without the National Analysis Facility and we thank the NAF team for their continuous support. We thankfully acknowledge the support by the DFG through the SFB 676 “Particles, Strings and the Early Universe”.

Open Access This article is distributed under the terms of the Creative Commons Attribution 4.0 International License (<http://creativecommons.org/licenses/by/4.0/>), which permits unrestricted use, distribution, and reproduction in any medium, provided you give appropriate credit to the original author(s) and the source, provide a link to the Creative Commons license, and indicate if changes were made. Funded by SCOAP³.

7 Appendix

Cutflow tables and numbers of events in the signal regions for the different LHC searches are given in this appendix. The cutflow and event yields of the SM backgrounds and the signal samples for several signal regions in the hadronic search are shown in Table 9.

Table 9 LHC all-hadronic inclusive search: background and signal event yields corresponding to 300/fb. The vector boson denoted by “V” refers to W, Z and γ

Cutflow	$t\bar{t}$ + jets	V + jets	VV + jets	Top + jets	Total SM	STC8	STC10
Preselection	3.93×10^7	3.94×10^8	4.5×10^6	5.7×10^6	4.43×10^8	27695	11510
HT > 1000 GeV	1.6×10^6	1.04×10^7	236392	120527	12.3×10^6	8261	3246
MHT > 500 GeV	8503	108477	4795	483	122458	3502	1895
$ \Delta\phi(\text{Jets, MHT}) $	1094	22256	934	43	24328	912	519

Table 10 LHC bottom-squark search: event yields for the different SM processes and STC models after applying each cut, the numbers are normalised to total 300 fb^{-1}

Cutflow	VV + jets	$t\bar{t}$ + jets	V + jets	Top + jets	Total SM	STC8	STC10
Preselection	86940500	173553000	11212700000	34843100	11508036600	1160340	1202280
Lepton(e, μ)veto	63661400	86844100	9884430000	24245100	10059180600	936391	974139
N-Jets ≥ 2	19224300	77540200	3895480000	16818900	4009063400	191599	185023
1st Jet $p_T > 300 \text{ GeV}$	688728	2606200	42888600	388099	46571627	27418	18690
2nd Jet $p_T > 200 \text{ GeV}$	437937	1602890	31104200	237408	33382435	15593	9458
2nd Jet $p_T < 70 \text{ GeV}$	124572	207703	9029620	60479	9422374	2801	2130
N-bjets = 2	543	29836	32045	3290	65715	521	159
$E_T^{\text{miss}} > 450 \text{ GeV}$	5.9	386	72	14	478	214	82
$m_T > 500 \text{ GeV}$	4.1	12	51	0.27	67	184	72
$H_T > 850 \text{ GeV}$	1.4	2.8	24	0.05	28	74	44

Table 11 LHC top-squark search: the event yields for the inclusive signal samples and several SM processes with 300 fb^{-1} at 14 TeV with 50 pile-up interactions

Cutflow	VV + jets	Cutflow	VV + jets	Top + jets	Total SM	STC8	STC10
Exactly 1 lepton	10141300	43887300	548959000	7665270	610652870	114405	112180
Njets ≥ 5	57851	3298680	827110	29067	4212708	4149	1911
1 or 2 b jets	19249	2405190	232049	21492	2677980	2642	1040
$E_T^{\text{miss}} > 400 \text{ GeV}$	219	5339	1601	62	7222	642	410
$\Delta\phi > 0.8$	194	3990	1397	45	5629	536	338
Centrality > 0.6	117	2275	822	24	3240	418	282
$m_T > 260 \text{ GeV}$	4	94	0	0	98	194	134
$m_{T2}^W > 260 \text{ GeV}$	2	26	0	0	28	155	113

The cutflow with the number of expected signal and background events for the bottom-squark search is given in Table 10.

Table 11 shows the expected number of SM background and SUSY signal events after each step of the event selection for the top-squark search.

The number of expected events for each search region in the multi-lepton channel is given in Table 12.

Table 12 LHC multi-lepton search: expected events for an integrated luminosity of $\mathcal{L} = 300 \text{ fb}^{-1}$. The definition of the search channels (ch) is given in the text and Fig. 6. EWK refers here to electroweakly produced SUSY particles

Ch	Total SM \pm unc.	STC8	Z_{Bi}	$\tilde{\chi}_1^0 \tilde{\chi}_1^\pm$	$\tilde{\chi}_2^\pm \tilde{\chi}_m^n$	Other EWK	No EWK
$m_{\ell^+\ell^-} < 75 \text{ GeV}$							
1	10900 \pm 3300	88	<0.5	76	7	3	2
2	5900 \pm 960	130	<0.5	110	10	10	0
3	1390 \pm 340	140	<0.5	110	20	10	10
4	1290 \pm 210	26	<0.5	16	7	2	2
5	348 \pm 121	19	<0.5	10	6	2	1
6	45.1 \pm 32.4	8.5	<0.5	2.3	4.5	0.5	1.2
7	469 \pm 125	26	<0.5	9	12	4	2
8	29.6 \pm 6.8	9.6	0.9	2.5	5.7	0.6	0.8
9	1.26 \pm 0.41	1.0	<0.5	0.2	0.6	0.0	0.3
10	21.4 \pm 3.2	6.6	1.0	1.2	4.6	0.6	0.1
11	4.48 \pm 1.72	2.7	0.6	0.5	1.9	0.3	0.0
12	0.0262 \pm 0.0095	0.3	<0.5	0.0	0.15	0.15	0.0
13	1.06 \pm 0.19	1.1	0.6	0.0	0.4	0.6	0.0
14	0.89 \pm 0.263	0.3	<0.5	0.0	0.3	0.0	0.0
15	0.0137 \pm 0.0048	0	<0.5	0	0	0	0
$75 \text{ GeV} < m_{\ell^+\ell^-} < 105 \text{ GeV}$							
1	111000 \pm 16000	97	<0.5	79	11	5	3
2	45900 \pm 7700	170	<0.5	140	20	10	10
3	7490 \pm 1390	210	<0.5	140	50	10	10
4	4640 \pm 490	26	<0.5	12	10	2	1
5	994 \pm 278	31	<0.5	13	13	4	1
6	55.4 \pm 40.3	16	<0.5	2	10	2	2
7	444 \pm 75	30	<0.5	9	17	2	1
8	26.2 \pm 5.0	26	2.9	6	16	4	2
9	1.91 \pm 0.47	2.0	1.0	0.2	1.5	0.0	0.4
10	16.4 \pm 1.4	6.7	1.4	0.9	4.7	0.8	0.4
11	5.01 \pm 0.93	3.0	1.0	0.6	1.6	0.0	0.8
12	0.058 \pm 0.0176	0.12	<0.5	0.0	0.0	0.0	0.12
13	1.77 \pm 0.2	0.15	<0.5	0.0	0.15	0.0	0.0
14	2.32 \pm 0.35	0.31	<0.5	0.0	0.31	0.0	0.0
15	0.113 \pm 0.034	0	<0.5	0	0	0	0
$m_{\ell^+\ell^-} > 105 \text{ GeV}$							
1	2380 \pm 320	22	<0.5	11	7	3	1
2	1720 \pm 240	34	<0.5	18	10	4	2
3	614 \pm 157	61	<0.5	21	24	10	6
4	217 \pm 47	10	<0.5	3	6	1	1
5	57.6 \pm 11.5	11	0.7	2	6	3	1
6	13.7 \pm 3.5	8.0	1.2	1.4	3.9	1.8	0.8
7	70.2 \pm 6.0	15	1.4	1	13	2	0
8	12.6 \pm 2.7	15	2.6	2	10	2	1
9	0.812 \pm 0.174	1.4	1.0	0.2	0.7	0.2	0.4
10	11.7 \pm 1.4	3.5	0.8	0.2	2.3	1.1	0.0
11	1.94 \pm 0.41	2.8	1.4	0.3	1.5	0.3	0.7
12	0.0391 \pm 0.0114	0	<0.5	0	0	0	0
13	1.36 \pm 0.14	0	<0.5	0	0	0	0
14	0.674 \pm 0.176	0.78	<0.5	0.0	0.15	0.15	0.47
15	0.0137 \pm 0.0055	0.24	<0.5	0.0	0.0	0.0	0.24

References

1. S.P. Martin, A supersymmetry primer. Adv.Ser. Direct. High Energy Phys. **18**, 1 (1997). [arXiv:hep-ph/9709356v6](#)
2. J. Wess, B. Zumino, Supergauge transformations in four dimensions. Nucl. Phys. B **70**, 39 (1974)
3. H.P. Nilles, Supersymmetry, supergravity and particle physics. Phys. Rep. **110**, 1 (1984)
4. H.E. Haber, G.L. Kane, The search for supersymmetry: probing physics beyond the standard model. Phys. Rep. **117**, 75 (1987)
5. R. Barbieri, S. Ferrara, C.A. Savoy, Gauge models with spontaneously broken local supersymmetry. Phys. Lett. B **119**, 343 (1982)
6. S. Dawson, E. Eichten, C. Quigg, Search for supersymmetric particles in hadron-hadron collisions. Phys. Rev. D **31**, 1581 (1985)
7. G.L. Kane, C. Kolda, L. Roszkowski, J.D. Wells, Study of constrained minimal supersymmetry. Phys. Rev. D **49**, 6173–6210 (1994). doi:[10.1103/PhysRevD.49.6173](#)
8. A.H. Chamseddine, R. Arnowitt, P. Nath, Locally supersymmetric grand unification. Phys. Rev. Lett. **49**, 970–974 (1982). doi:[10.1103/PhysRevLett.49.970](#)
9. N. Arkani-Hamed, P. Schuster, N. Toro, J. Thaler, L.-T. Wang et al., MARMOSSET: the path from LHC data to the new standard model via on-shell effective theories. Report no.: FERMILAB-FN-0800-CD. [arXiv:hep-ph/0703088](#)
10. J. Alwall, P. Schuster, N. Toro, Simplified models for a first characterization of new physics at the LHC. Phys. Rev. D **79**, 075020 (2009). [arXiv:0810.3921](#)
11. D. Alves et al., Simplified models for LHC new physics searches. J. Phys. G **39**, 105005 (2012). [arXiv:1105.2838](#)
12. G.R. Farrar, P. Fayet, Phenomenology of the production, decay, and detection of new hadronic states associated with supersymmetry. Phys. Lett. B **76**, 575 (1978)
13. O. Buchmueller, R. Cavanaugh, A. De Roeck, J. Ellis, H. Flacher et al., Likelihood functions for supersymmetric observables in frequentist analyses of the CMSSM and NUHM1. Eur. Phys. J. C **64**, 391–415 (2009). [arXiv:0907.5568](#) [hep-ph]
14. O. Buchmueller, R. Cavanaugh, A. De Roeck, J. Ellis, H. Flacher et al., The NUHM2 after LHC Run 1. Eur. Phys. J. C **74**, 3212 (2014). [arXiv:1408.4060](#) [hep-ph]
15. ATLAS Collaboration, G. Aad et al., Search for the electroweak production of supersymmetric particles in \sqrt{s} collisions with the ATLAS detector. Report no.: CERN-PH-EP-2015-218. [arXiv:1509.07152](#) [hep-ex]
16. ATLAS Collaboration, G. Aad et al., Search for the direct production of charginos, neutralinos and staus in final states with at least two hadronically decaying taus and missing transverse momentum in $pp = 8$ TeV with the ATLAS detector. JHEP **1410**, 96 (2014). [arXiv:1407.0350](#) [hep-ex]
17. DELPHI Collaboration, J. Abdallah et al., Searches for supersymmetric particles in e^+e^- collisions up to 208-GeV and interpretation of the results within the MSSM. Eur. Phys. J. C **31**, 421–479 (2003). [arXiv:hep-ex/0311019](#)
18. Particle Data Group Collaboration, K. Olive et al., Review of particle physics. Chin. Phys. C **38**, 090001 (2014)
19. H. Baer, J. List, Post LHC8 SUSY benchmark points for ILC physics. Phys. Rev. D **88**, 055004 (2013). [arXiv:1307.0782](#) [hep-ph]
20. S. Dimopoulos, G.F. Giudice, Naturalness constraints in supersymmetric theories with nonuniversal soft terms. Phys. Lett. B **357**, 573–578 (1995). [arXiv:hep-ph/9507282](#)
21. G. Ross, SUSY: Quo Vadis? Eur. Phys. J. C **74**, 2699 (2014)
22. R.L. Arnowitt, B. Dutta, T. Kamon, N. Kolev, D.A. Toback, Detection of SUSY in the stau-neutralino coannihilation region at the LHC. Phys. Lett. B **639**, 46–53 (2006). [arXiv:hep-ph/0603128](#)
23. R.L. Arnowitt, A. Aurisano, B. Dutta, T. Kamon, N. Kolev, P. Simeon, D.A. Toback, P. Wagner, Indirect measurements of the stau-neutralino $1(0)$ mass difference and mSUGRA in the coannihilation region of mSUGRA models at the LHC. Phys. Lett. B **649**, 73–82 (2007)
24. R.M. Godbole, M. Guchait, D.P. Roy, Using Tau polarization to probe the stau co-annihilation region of mSUGRA Model at LHC. Phys. Rev. D **79**, 095015 (2009). [arXiv:0807.2390](#) [hep-ph]
25. Z.-H. Yu, X.-J. Bi, Q.-S. Yan, P.-F. Yin, Detecting light stop pairs in coannihilation scenarios at the LHC. Phys. Rev. D **87**(5), 055007 (2013). [arXiv:1211.2997](#) [hep-ph]
26. C. Adolphsen, M. Barone, B. Barish, K. Buesser, P. Burrows et al., The international linear collider technical design report—volume 3.II: accelerator baseline design. ISBN 978-3-935702-77-5. [arXiv:1306.6328](#) [physics.acc-ph]
27. ILC Parameters Joint Working Group Collaboration, T. Barklow, J. Brau, K. Fujii, J. Gao, J. List, N. Walker, K. Yokoya, ILC operating scenarios. Report nos.: ILC-NOTE-2015-068, DESY 15–102, IHEP-AC-2015-002, KEK Preprint 2015–17, SLAC-PUB-16309. [arXiv:1506.07830](#) [physics.hep-ex]
28. ATLAS Collaboration, G. Aad et al., Search for direct third-generation squark pair production in final states with missing transverse momentum and two b collisions with the ATLAS detector. JHEP **1310**, 189 (2013). [arXiv:1308.2631](#) [hep-ex]
29. CMS Collaboration, Search for direct production of bottom squark pairs. Technical Report CMS-PAS-SUS-13-018 (CERN, Geneva 2014)
30. ATLAS Collaboration, G. Aad et al., Search for direct production of charginos, neutralinos and sleptons in final states with two leptons and missing transverse momentum in pp 8 TeV with the ATLAS detector. JHEP **1405**, 071 (2014). [arXiv:1403.5294](#) [hep-ex]
31. CMS Collaboration, V. Khachatryan et al., Searches for electroweak production of charginos, neutralinos, and sleptons decaying to leptons and W, Z , and Higgs bosons in pp collisions at 8 TeV. Eur. Phys. J. C **74**(9), 3036 (2014). [arXiv:1405.7570](#) [hep-ex]
32. W. Beenakker, R. Hopker, M. Spira, P. Zerwas, Squark and gluino production at hadron colliders. Nucl. Phys. B **492**, 51–103 (1997). [arXiv:hep-ph/9610490](#)
33. W. Beenakker, M. Klasen, M. Kramer, T. Plehn, M. Spira et al., The Production of charginos/neutralinos and sleptons at hadron colliders. Phys. Rev. Lett. **83**, 3780 (1999). [arXiv:hep-ph/9906298](#)
34. D. Tovey, On measuring the masses of pair-produced semi-invisibly decaying particles at hadron colliders. JHEP **0804**, 034 (2008). [arXiv:0802.2879](#)
35. G. Polesello, D.R. Tovey, Supersymmetric particle mass measurement with the boost-corrected contranverse mass. JHEP **1003**, 030 (2010). [arXiv:0910.0174](#) [hep-ph]
36. ATLAS Collaboration, G. Aad et al., Search for new phenomena in final states with large jet multiplicities and missing transverse momentum using $\sqrt{s} = 7$ collisions with the ATLAS detector. JHEP **1111**, 099 (2011). [arXiv:1110.2299](#) [hep-ex]
37. ATLAS Collaboration, G. Aad et al., Search for squarks and gluinos using final states with jets and missing transverse momentum with the ATLAS detector in $\sqrt{s} = 7$ TeV proton-proton collisions. Phys. Lett. B **710**, 67–85 (2012). [arXiv:1109.6572](#) [hep-ex]
38. ATLAS Collaboration, G. Aad et al., Search for squarks and gluinos with the ATLAS detector in final states with jets and missing transverse momentum using 4.7 fb^{-1} TeV proton-proton collision data. Phys. Rev. D **87**, 012008 (2013). [arXiv:1208.0949](#) [hep-ex]
39. ATLAS Collaboration, G. Aad et al., Hunt for new phenomena using large jet multiplicities and missing transverse momentum with ATLAS in 4.7 fb^{-1} TeV proton-proton collisions. JHEP **1207**, 167 (2012). [arXiv:1206.1760](#) [hep-ex]
40. ATLAS Collaboration, G. Aad et al., Search for top and bottom squarks from gluino pair production in final states with missing

- transverse energy and at least three b-jets with the ATLAS detector. *Eur. Phys. J. C* **72**, 2174 (2012). [arXiv:1207.4686](#) [hep-ex]
41. ATLAS Collaboration, G. Aad et al., Search for squarks and gluinos with the ATLAS detector in final states with jets and missing transverse momentum using $\sqrt{s} = 8$ TeV proton-proton collision data. *JHEP* **1409**, 176 (2014). [arXiv:1405.7875](#) [hep-ex]
 42. ATLAS Collaboration, G. Aad et al., Search for new phenomena in final states with large jet multiplicities and missing transverse momentum at $\sqrt{s}=8$ TeV proton-proton collisions using the ATLAS experiment. *JHEP* **1310**, 130 (2013). [arXiv:1308.1841](#) [hep-ex]
 43. ATLAS Collaboration, G. Aad et al., Search for strong production of supersymmetric particles in final states with missing transverse momentum and at least three $b=8$ TeV proton-proton collisions with the ATLAS detector. *JHEP* **1410**, 24 (2014). [arXiv:1407.0600](#) [hep-ex]
 44. CMS Collaboration, S. Chatrchyan et al., Search for new physics with jets and missing transverse momentum in pp collisions at $\sqrt{s} = 7$ TeV. *JHEP* **08**, 155 (2011). [arXiv:1106.4503](#) [hep-ex]
 45. CMS Collaboration, S. Chatrchyan et al., Search for New Physics in the Multijet and Missing Transverse Momentum Final State in Proton-Proton Collisions at $\sqrt{s} = 7$ TeV. *Phys. Rev. Lett.* **109**, 171803 (2012). [arXiv:1207.1898](#) [hep-ex]
 46. CMS Collaboration, S. Chatrchyan et al., Search for new physics in the multijet and missing transverse momentum final state in proton-proton collisions at $\sqrt{s} = 8$ TeV. *JHEP* **1406**, 055 (2014). [arXiv:1402.4770](#) [hep-ex]
 47. CMS Collaboration, S. Chatrchyan et al., Search for supersymmetry in events with b jets and missing transverse momentum at the LHC. *JHEP* **1107**, 113 (2011). [arXiv:1106.3272](#) [hep-ex]
 48. CMS Collaboration, S. Chatrchyan et al., Search for supersymmetry in events with b-quark jets and missing transverse energy in pp collisions at 7 TeV. *Phys. Rev. D* **86**, 072010 (2012). [arXiv:1208.4859](#) [hep-ex]
 49. CMS Collaboration, S. Chatrchyan et al., Search for gluino mediated bottom- and top-squark production in multijet final states in pp collisions at 8 TeV. *Phys. Lett. B* **725**, 243 (2013). [arXiv:1305.2390](#) [hep-ex]
 50. ATLAS Collaboration, G. Aad et al., Search for scalar bottom quark pair production with the ATLAS detector in pp TeV. *Phys. Rev. Lett.* **108**, 181802 (2012). [arXiv:1112.3832](#) [hep-ex]
 51. ATLAS Collaboration, G. Aad et al., Search for direct top squark pair production in final states with one isolated lepton, jets, and missing transverse momentum in $\sqrt{s} = 7$ of ATLAS data. *Phys. Rev. Lett.* **109**, 211803 (2012). [arXiv:1208.2590](#) [hep-ex]
 52. ATLAS Collaboration, G. Aad et al., Search for top squark pair production in final states with one isolated lepton, jets, and missing transverse momentum in $\sqrt{s} =$ collisions with the ATLAS detector. *JHEP* **1411**, 118 (2014). [arXiv:1407.0583](#) [hep-ex]
 53. CMS Collaboration, S. Chatrchyan et al., Search for top-squark pair production in the single-lepton final state in pp collisions at $\sqrt{s} = 8$ TeV. *Eur. Phys. J. C* **73**(12), 2677 (2013). [arXiv:1308.1586](#) [hep-ex]
 54. ATLAS Collaboration, G. Aad et al., Search for supersymmetry in events with four or more leptons in $\sqrt{s} = 8$ TeV pp collisions with the ATLAS detector. *Phys. Rev. D* **90**(5), 052001 (2014). [arXiv:1405.5086](#) [hep-ex]
 55. ATLAS Collaboration, G. Aad et al., Search for direct production of charginos and neutralinos in events with three leptons and missing transverse momentum in $\sqrt{s} =$ collisions with the ATLAS detector. *JHEP* **1404**, 169 (2014). [arXiv:1402.7029](#) [hep-ex]
 56. M. Graesser, J. Shelton, Probing supersymmetry with third-generation cascade decays. *JHEP* **06**, 039 (2009). [arXiv:0811.4445](#) [hep-ph]
 57. N. Desai, B. Mukhopadhyaya, Signals of supersymmetry with inaccessible first two families at the large hadron collider. *Phys. Rev. D* **80**, 055019 (2009). [arXiv:0901.4883](#) [hep-ph]
 58. H. Baer, V. Barger, A. Lessa, X. Tata, Supersymmetry discovery potential of the LHC at $s^{**}(1/2) = 10$ -TeV and 14-TeV without and with missing E(T). *JHEP* **09**, 063 (2009). [arXiv:0907.1922](#) [hep-ph]
 59. H. Li, W. Parker, Z. Si, S. Su, Sbottom signature of the supersymmetric golden region. *Eur. Phys. J. C* **71**, 1584 (2011). [arXiv:1009.6042](#) [hep-ph]
 60. S. Bornhauser, M. Drees, S. Grab, J.S. Kim, Light stop searches at the LHC in events with two b-jets and missing energy. *Phys. Rev. D* **83**, 035008 (2011). [arXiv:1011.5508](#) [hep-ph]
 61. J. de Favereau, C. Delaere, P. Demin, A. Giammanco, V. Lematre et al., DELPHES 3, A modular framework for fast simulation of a generic collider experiment. *JHEP* **1402**, 057 (2014). [arXiv:1307.6346](#) [hep-ex]
 62. T. Sjostrand, S. Mrenna, P.Z. Skands, PYTHIA 6.4 physics and manual. *JHEP* **0605**, 026 (2006). [arXiv:hep-ph/0603175](#) [hep-ph]
 63. M. Cacciari, G.P. Salam, Pileup subtraction using jet areas. *Phys. Lett. B* **659**, 119–126 (2008). [arXiv:0707.1378](#) [hep-ph]
 64. A. Avetisyan, J.M. Campbell, T. Cohen, N. Dhirgra, J. Hirschauser et al., Methods and results for standard model event generation at $\sqrt{s} = 14$ TeV, 33 TeV and 100 TeV proton colliders (a snowmass whitepaper), in *Community Summer Study 2013: Snowmass on the Mississippi (CSS2013)* (Minneapolis, 2013). [arXiv:1308.1636](#) [hep-ex]
 65. J. Alwall, M. Herquet, F. Maltoni, O. Mattelaer, T. Stelzer, MadGraph 5: going beyond. *JHEP* **1106**, 128 (2011). [arXiv:1106.0522](#) [hep-ph]
 66. J. Anderson, A. Avetisyan, R. Brock, S. Chekanov, T. Cohen et al., Snowmass energy frontier simulations, in *Community Summer Study 2013: Snowmass on the Mississippi (CSS2013)* (Minneapolis, 2013). [arXiv:1309.1057](#) [hep-ex]
 67. A. Avetisyan, S. Bhattacharya, M. Narain, S. Padhi, J. Hirschauser et al., Snowmass energy frontier simulations using the open science grid (a snowmass 2013 whitepaper), in *Community Summer Study 2013: Snowmass on the Mississippi (CSS2013)* (Minneapolis, 2013). [arXiv:1308.0843](#) [hep-ex]
 68. R. Field, Early LHC underlying event data—findings and surprises, in *Hadron Collider Physics. Proceedings, 22nd Conference, HCP2010* (Toronto, 2010). [arXiv:1010.3558](#) [hep-ph]
 69. R.D. Cousins, J.T. Linnemann, J. Tucker, Evaluation of three methods for calculating statistical significance when incorporating a systematic uncertainty into a test of the background-only hypothesis for a Poisson process. *Nucl. Instrum. Methods Phys. Res. Sect. A* **595**, 480 (2008). [arXiv:physics/0702156](#)
 70. K. Cranmer, Statistical challenges for searches for new physics at the LHC, in *Statistical Problems in Particle Physics, Astrophysics and Cosmology*. Proceedings, Conference, PHYSTAT05 (Oxford 2005), pp. 112–123. [arXiv:physics/0511028](#)
 71. J. Linnemann, Measures of significance in HEP and astrophysics, in *Statistical Problems in Particle Physics, Astrophysics, and Cosmology*. Proceedings, Conference, PHYSTAT 2003, vol. C030908 (Stanford, 2003), p. MOBT001. [arXiv:physics/0312059](#)
 72. L. Moneta, K. Belasco, K.S. Cranmer, S. Kreiss, A. Lazzarro et al., The RooStats project. *PoS ACAT2010*, 057 (2010). [arXiv:1009.1003](#) [physics.data-an]
 73. Y. Bai, H.-C. Cheng, J. Gallicchio, J. Gu, Stop the top background of the stop search. *JHEP* **1207**, 110 (2012). [arXiv:1203.4813](#) [hep-ph]
 74. T. Behnke, J.E. Brau, P.N. Burrows, J. Fuster, M. Peskin et al., The international linear collider technical design report—volume 4: detectors. ISBN 978-3-935702-78-2. [arXiv:1306.6329](#) [physics.ins-det]

75. W. Kilian, T. Ohl, J. Reuter, WHIZARD: simulating multi-particle processes at LHC and ILC. *Eur. Phys. J. C* **71**, 1742 (2011). [arXiv:0708.4233](#) [hep-ph]
76. M. Berggren, SGV 3.0—a fast detector simulation, in *International Workshop on Future Linear Colliders (LCWS11)* (Granada, 2011). [arXiv:1203.0217](#) [physics.ins-det]
77. Linear Collider ILD Concept Group Collaboration, T. Abe et al., The international large detector: letter of intent. [arXiv:1006.3396](#) [hep-ex]
78. S. Choi, J. Kalinowski, G.A. Moortgat-Pick, P. Zerwas, Analysis of the neutralino system in supersymmetric theories: addendum. Report nos.: DESY-02-020, IFT-02-03. [arXiv:hep-ph/0202039](#)
79. M. Ball, Rekonstruktion von Neutralinos mit TESLA. Diploma thesis, University of Hamburg (2003). <https://bib-pubdb1.desy.de/record/295174/>. Accessed 22 Feb 2016
80. N. D’Ascenzo, Study of the neutralino sector and analysis of the muon response of a highly granular hadron calorimeter at the international linear collider. Ph.D. thesis, University of Hamburg (2009). <http://www-library.desy.de/cgi-bin/showprep.pl?desy-thesis-09-004>. Accessed 17 Feb 2016
81. T. Suehara, J. List, Chargino and neutralino separation with the ILD experiment. Report no.: DESY-09-099. [arXiv:0906.5508](#) [hep-ex]
82. H. Aihara, P. Burrows, M. Oreglia, E. Berger, V. Guarino et al., SiD letter of intent. Report nos.: SLAC-R-989, FERMILAB-LOI-2009-01, FERMILAB-PUB-09-681-E. [arXiv:0911.0006](#) [physics.ins-det]
83. P. Bechtle, M. Berggren, J. List, P. Schade, O. Stempel, Prospects for the study of the τ -system in SPS1a’ at the ILC. *Phys. Rev. D* **82**, 055016 (2010). [arXiv:0908.0876](#) [hep-ex]
84. C. Bartels, M. Berggren, J. List, Characterising WIMPs at a future e^+e^- linear collider. *Eur. Phys. J. C* **72**, 2213 (2012). [arXiv:1206.6639](#) [hep-ex]
85. C. Bartels, WIMP search and a Cherenkov detector prototype for ILC polarimetry. Ph.D. thesis, University of Hamburg (2011). <http://www-library.desy.de/preparch/desy/thesis/desy-thesis-11-034.pdf>. Accessed 17 Feb 2016
86. G. Moortgat-Pick, T. Abe, G. Alexander, B. Ananthanarayan, A. Babich et al., The role of polarized positrons and electrons in revealing fundamental interactions at the linear collider. *Phys. Rep.* **460**, 131–243 (2008). [arXiv:hep-ph/0507011](#)
87. C. Bartels, O. Kittel, U. Langenfeld, J. List, Measurement of radiative neutralino production, in *International Workshop on Future Linear Colliders (LCWS11)* (Granada, 2011) [arXiv:1202.6324](#) [hep-ph]
88. M. Berggren, Reconstructing sleptons in cascade-decays at the linear collider, in *Proceedings of LCWS04* (Paris, April 2004), pp. 907–910. [arXiv:hep-ph/0508247](#)
89. A.L. Read, Presentation of search results: the cl s technique. *J Phys G: Nucl Part Phys* **28**(10), 2693 (2002). <http://stacks.iop.org/0954-3899/28/i=10/a=313>
90. T. Junk, Confidence level computation for combining searches with small statistics. *Nucl. Instrum. Meth. A* **434**, 435–443 (1999). [arXiv:hep-ex/9902006](#)
91. The ATLAS Collaboration, The CMS Collaboration, The LHC Higgs Combination Group, Procedure for the LHC Higgs boson search combination in Summer 2011. Technical report CMS-NOTE-2011-005. ATL-PHYS-PUB-2011-11, CERN, Geneva, Aug (2011). <https://cds.cern.ch/record/1379837>. Accessed 17 Feb 2016
92. CMS Collaboration, Jet energy resolution in CMS at $\sqrt{s}=7$ TeV. Technical report CMS-PAS-JME-10-014 (2011)
93. D. Curtin, Mixing it up with MT2: unbiased mass measurements at hadron colliders. *Phys. Rev. D* **85**, 075004 (2012). [arXiv:1112.1095](#) [hep-ph]
94. M. Berggren, Simplified SUSY at the ILC, in *Community Summer Study 2013: Snowmass on the Mississippi (CSS2013)* (Minneapolis, 2013). [arXiv:1308.1461](#) [hep-ph]
95. A. Freitas, H.-U. Martyn, U. Nauenberg, P. Zerwas, Sleptons: masses, mixings, couplings, in *Linear Colliders. Proceedings, International Conference, LCWS 2004* (Paris, 2004), pp. 939–946. [arXiv:hep-ph/0409129](#)
96. P. Bechtle, K. Desch, M. Uhlenbrock, P. Wienemann, Constraining SUSY models with Fittino using measurements before, with and beyond the LHC. *Eur. Phys. J. C* **66**, 215–259 (2010). [arXiv:0907.2589](#) [hep-ph]
97. A. Bharucha, J. Kalinowski, G. Moortgat-Pick, K. Rolbiecki, G. Weiglein, One-loop effects on MSSM parameter determination via chargino production at the LC. *Eur. Phys. J. C* **73**(6), 2446 (2013). [arXiv:1211.3745](#) [hep-ph]
98. LHC/LC Study Group Collaboration, G. Weiglein et al., Physics interplay of the LHC and the ILC. *Phys. Rep.* **426**, 47–358 (2006). [arXiv:hep-ph/0410364](#)
99. G. Blair, A. Freitas, H.-U. Martyn, G. Polesello, W. Porod et al., Reconstructing supersymmetry at ILC/LHC. *Acta Phys. Polon. B* **36**, 3445–3462 (2005). [arXiv:hep-ph/0512084](#)