

CORPORATE PROFILE



Empowering Engineering Refinement

LMS International NV
 Interleuvenlaan 68
 3001 Leuven, Belgium
 +32 16 384 200, Fax +32 16 384 350
 Email: info@lms.be,
 Website: www.lmsintl.com

LMS N. America
 5455 Corporate Drive, Suite 303
 Troy, MI 48098
 (248) 952-5664, Fax (248) 952-1610

LMS provides the integrated testing, modeling, and simulation solutions that help engineers to optimize the acoustic, structural dynamic and durability performance of their products. We help them to improve their productivity at all stages of the development process, to work within the ever tighter constraints of time and money - and reach new standards of product refinement and customer satisfaction. Additionally, LMS provides support and advanced engineering services. LMS is certified to ISO 9001 quality standards, and employs over 450 people in 13 subsidiaries around the world.

It is our mission to ultimately make 'Design-Right-First-Time' possible and practicable for refinement engineering. We will enable the engineering team to systematically improve, refine, and optimize dynamic performance from the initial design to completion in a coherent way. To link design variables to measurable phenomena at the product level. To make well-informed, concept-level decisions, examine more candidate designs, reduce the number of expensive prototypes, and avoid the flawed concept altogether.

The overall solution portfolio of LMS comprises

- MTEST solutions - "Integrated Test Lab": Mobile Testing, Acoustic & Structural Testing, Physical Prototype Refinement and Durability Lab Simulation
- MCAE - Virtual Prototyping Solutions: Vibro-acoustic CAE, Fatigue CAE, Virtual Prototype Refinement

LMS Computer-Aided Testing Solutions

LMS testing solutions can be used in the laboratory, the test cell, or the field - and are scalable for use by the research specialist, the engineer, or the technician. The measurement

front-end, based on LMS SCADAS III or HP VXI hardware, can range from only a few channels, to a fully distributed architecture with over a thousand channels and massively parallel DSP power.

LMS Computer-Aided Engineering Solutions

LMS has a range of CAE tools that enable you to accurately predict dynamic performance at the 'virtual' prototype stage.

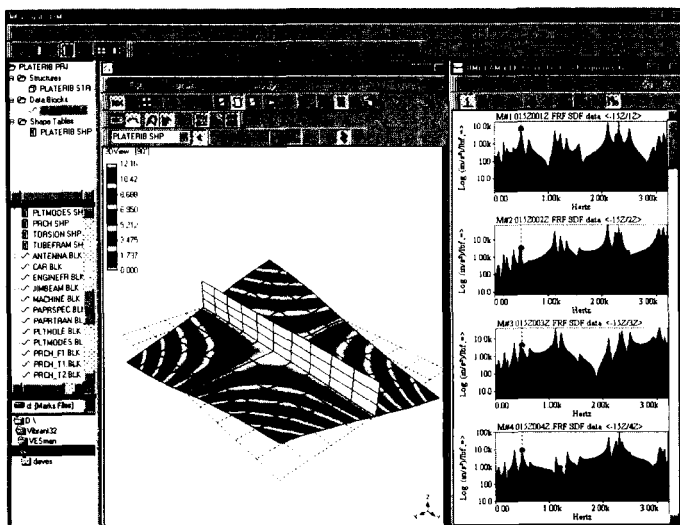
Some LMS products have become *de facto* industrial standards. Many stretch the state-of-the-art. LMS also provide unique tools for test-prediction correlation and hybrid modeling.

LMS Engineering Services

LMS Engineering Services provide a broad range of activities, from full project responsibility and product co-developments, to overload contracting, technology transfer, contract research, and engineering methods auditing. Our expertise ranges throughout the product development cycle: from concept and initial design optimization, to detailed modeling and predictive studies, to prototype refinement by hardware testing. ■

ME'scopeVES™

VISUAL ENGINEERING SERIES



- Operating Deflection Shapes
- Modal Analysis
- Acoustic Intensity & Sound Power
- Vibro-Acoustic Animation
- Structural Modifications
- Strain, Temperature, Pressure. . .

THE ALL NEW 32-bit **ME'scopeVES™** makes it even easier for you to spatially display and animate engineering test data. Our unique graphics and Digital Movies™ allow you to document test results so that others can understand them.

Ph: (209) 984-4970 • Fax: (209) 984-5415
 Web: www.vibetech.com



Vibrant Technology, Inc.