

Labour market statistics: December 2011



Coverage: **UK**

Date: **14 December 2011**

Geographical Area: **UK and GB**

Theme: **Labour Market**

For August to October 2011:

- The employment rate for those aged from 16 to 64 was 70.3 per cent, down 0.2 on the quarter.
- There were 29.11 million people in employment aged 16 and over, down 63,000 on the quarter. The number of people employed in the public sector fell by 67,000 on the quarter to reach 5.99 million. The number of people employed in the private sector rose by 5,000 on the quarter to reach 23.12 million.
- The unemployment rate was 8.3 per cent of the economically active population, up 0.4 on the quarter. There were 2.64 million unemployed people, up 128,000 on the quarter. The unemployment rate is the highest since 1996 and the number of unemployed people is the highest since 1994.
- The inactivity rate for those aged from 16 to 64 was 23.2 per cent, down 0.1 on the quarter. There were 9.33 million economically inactive people aged from 16 to 64, down 54,000 on the quarter.
- Total pay (including bonuses) rose by 2.0 per cent on a year earlier, down 0.3 on the three months to September 2011 (with both the private and public sectors showing lower pay growth).
- Regular pay (excluding bonuses) rose by 1.8 per cent on a year earlier, up 0.1 on the three months to September 2011.

In this Bulletin

This Statistical Bulletin contains the latest estimates for employment, unemployment, economic inactivity, claimant count, average earnings, labour productivity, vacancies and labour disputes. All estimates discussed in this Statistical Bulletin are seasonally adjusted except where otherwise stated.

Regional estimates are available from the [Regional Labour Market Statistical Bulletin](#).

New this month:

Labour Force Survey and Average Weekly Earnings estimates for August to October 2011.

Workforce Jobs and Public Sector Employment for September 2011.

Claimant count estimates for November 2011.

Vacancies estimates for September to November 2011.

Labour disputes estimates for October 2011.

Summary of labour market statistics published on 14 December 2011

A video explaining this story is available on the [ONS You Tube channel](#).

The **employment rate** for those aged from 16 to 64 for the three months to October 2011 was 70.3 per cent, down 0.2 percentage points on the quarter. The **number of people in employment aged 16 and over** fell by 63,000 on the quarter and by 14,000 on the year to reach 29.11 million. The number of employees fell by 252,000 over the quarter to reach 24.77 million. The number of self-employed people increased by 166,000 on the quarter to reach 4.14 million. This is the highest number of self-employed people since comparable records began in 1992. The number of people in other categories of employment increased by 23,000 over the quarter to reach 201,000.

The number of **people employed in the public sector** fell by 67,000 between June and September 2011 to reach 5.99 million, the lowest figure since September 2003. The number of people employed in the private sector increased by 5,000 on the quarter to reach 23.12 million.

The **unemployment rate** for the three months to October 2011 was 8.3 per cent of the economically active population, up 0.4 on the quarter. The last time the unemployment rate was higher was in the three months to January 1996. The total **number of unemployed people** increased by 128,000 over the quarter to reach 2.64 million. The number of unemployed people has not been higher since the three months to September 1994. The unemployment rate for people aged from 16 to 24 increased by 1.2 percentage points over the quarter to reach 22.0 per cent of the economically active population for that age group. The number of unemployed people aged from 16 to 24 increased by 54,000 over the quarter to reach 1.03 million; this figure includes 297,000 people in full-time education who were looking for part-time work. The unemployment level and rate for people aged from 16 to 24 are the highest since directly comparable records began in 1992. However earlier data, calculated on a slightly different basis, indicates that the level of youth unemployment was higher in the mid-1980s.

The **inactivity rate** for those aged from 16 to 64 for the three months to October 2011 was 23.2 per cent, down 0.1 on the quarter. The **number of economically inactive people** aged from 16 to 64 fell by 54,000 over the quarter to reach 9.33 million. This quarterly fall in economic inactivity mainly occurred among women. The inactivity rate for women aged from 16 to 64 fell by 0.2 percentage points over the quarter to reach 29.1 per cent, the lowest figure since comparable records began in 1971.

There were 1.60 million people claiming **Jobseeker's Allowance** (JSA) in November 2011, up 3,000 on October. The number of people claiming JSA for up to six months fell by 14,000 between October and November to reach 946,800.

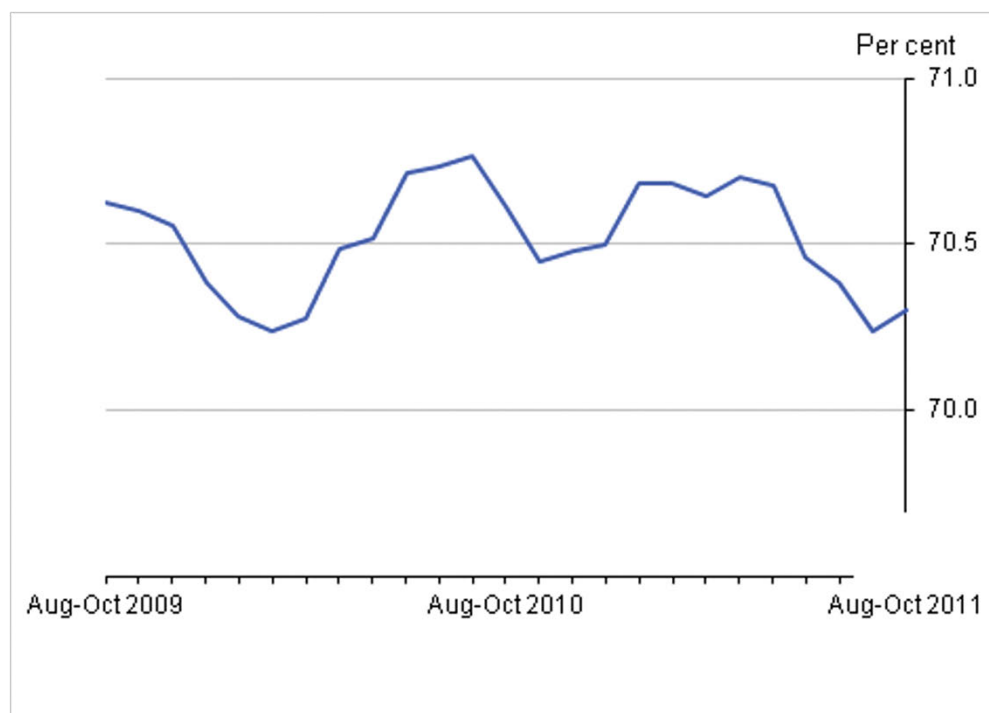
The whole economy **earnings annual growth rate for total pay** (including bonuses) fell by 0.3 percentage points between the three months to September 2011 and the three months to October to reach 2.0 per cent. The annual growth rate for the private sector fell from 2.4 per cent to 2.1 per cent and the public sector growth rate fell from 2.3 per cent to 2.1 per cent.

The whole economy **earnings annual growth rate for regular pay** (excluding bonuses) increased by 0.1 percentage point to reach 1.8 per cent in the three months to October 2011.

Employment

Employment measures the number of people in paid work and differs from the number of jobs because some people have more than one job. A comparison between estimates of employment and jobs is available in an [article published on the website](#). The employment rate for those aged from 16 to 64 was 70.3 per cent in the three months to October 2011, down 0.2 percentage points on the three months to July 2011 and down 0.3 percentage points from a year earlier.

Employment rate (aged 16 to 64), seasonally adjusted



Source: Labour Force Survey - Office for National Statistics

Download chart

[XLS](#) [XLS format](#)
(26 Kb)

The employment rate for men aged from 16 to 64 was 75.2 per cent, down 0.3 percentage points on the previous quarter. The corresponding employment rate for women was 65.5 per cent, virtually unchanged on the previous quarter.

The number of people in employment was 29.11 million in the three months to October 2011, down 63,000 from the three months to July 2011 and down 14,000 on a year earlier. The number of people in full-time employment was 21.28 million in the three months to October 2011, down 55,000 from the three months to July 2011. Of this total, 13.60 million were men and 7.69 million were women. The number of people in part-time employment was 7.82 million in the three months to October 2011, down 8,000 from the three months to July 2011. Of this total, 1.98 million were men and 5.84 million were women.

The number of people in public sector employment was 5.99 million in September 2011, down 67,000 from June 2011. The number of people in private sector employment in September 2011 was 23.12 million, up 5,000 from June 2011. Further information on public sector employment is available in the [Public Sector Employment Statistical Bulletin](#).

Employment by country of birth and nationality (not seasonally adjusted)

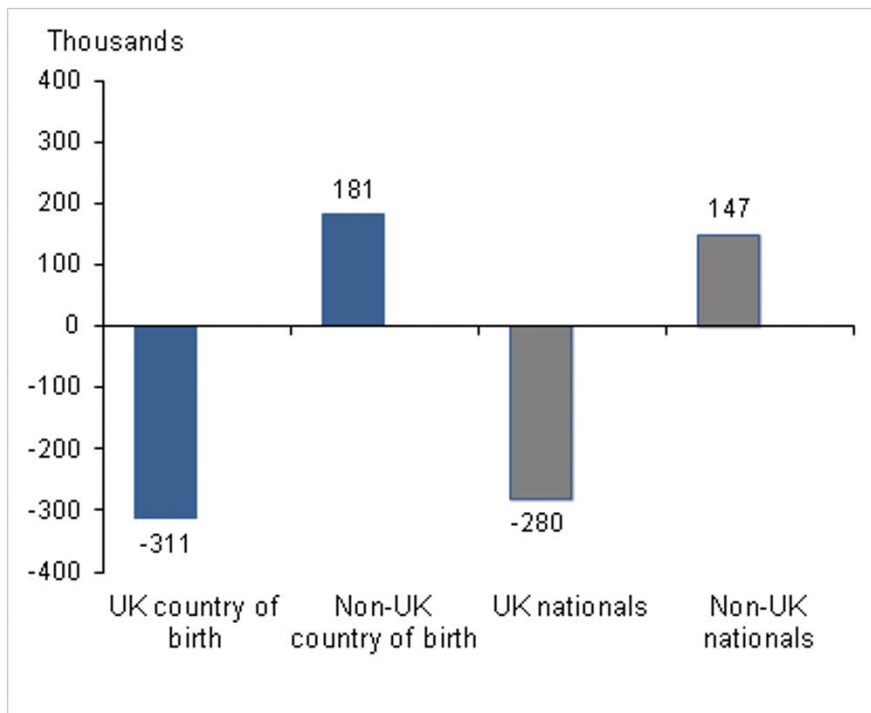
ONS publishes estimates of employment by both country of birth and by nationality. The number of non-UK born people in employment is greater than the number of non-UK nationals in employment, as the non-UK born series includes many UK nationals. The estimates relate to the number of people in employment rather than the number of jobs. These statistics have sometimes been incorrectly interpreted as indicating the proportion of new jobs that are taken by foreign migrants.

The number of UK nationals in employment was 26.60 million in the three months to September 2011, down 280,000 on a year earlier. The number of non-UK nationals in employment was 2.56 million, up 147,000 from a year earlier.

The employment rate for UK nationals aged from 16 to 64 was 70.7 per cent in the three months to September 2011, down 0.6 percentage points on a year earlier. The corresponding employment rate for non-UK nationals was 68.3 per cent, unchanged on a year earlier.

The number of UK born people in employment was 25.08 million in the three months to September 2011, down 311,000 on a year earlier. The number of non-UK born people in employment was 4.08 million, up 181,000 from a year earlier.

The employment rate for UK born people aged from 16 to 64 was 71.1 per cent in the three months to September 2011, down 0.5 percentage points on a year earlier. The corresponding employment rate for non-UK born people was 67.3 per cent, down 0.5 percentage points on a year earlier.

Employment by country of birth and nationality, changes on year (not seasonally adjusted)

Source: Labour Force Survey - Office for National Statistics

Download chart

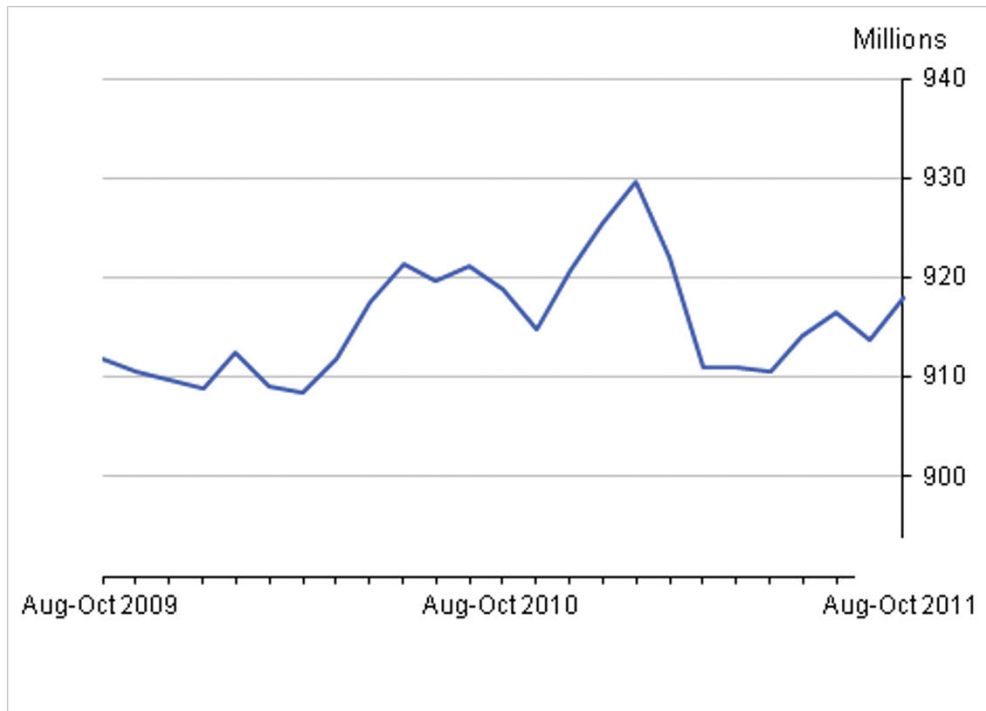
[XLS](#) [XLS format](#)

(25 Kb)

Actual hours worked

Actual hours worked measures the number of hours worked in the economy. Total hours worked per week were 918.0 million in the three months to October 2011, up 3.8 million from the three months to July 2011. Average weekly hours worked in the three months to October 2011 were 31.6, up 0.2 from the three months to July 2011.

Total weekly hours, seasonally adjusted



Source: Labour Force Survey - Office for National Statistics

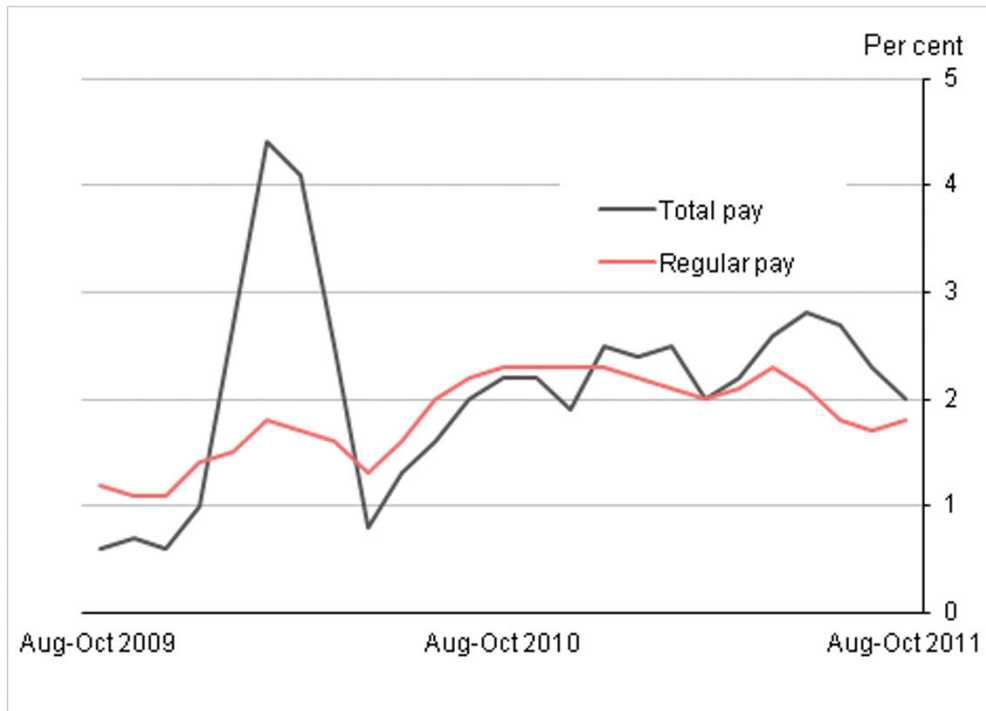
Download chart

[XLS](#) [XLS format](#)

(26.5 Kb)

Earnings

Earnings measures the money received in return for work done, gross of tax. The estimates relate to Great Britain and include salaries but not unearned income, benefits in kind or arrears of pay. Average total pay (including bonuses) was £464 per week in October 2011. In the three months to October 2011 total pay rose by 2.0 per cent on a year earlier, down 0.3 from the three months to September. Average regular pay (excluding bonuses) was £438 per week in October 2011. In the three months to October 2011 regular pay rose by 1.8 per cent on a year earlier, up 0.1 from the three months to September.

GB whole economy average earnings annual growth rates, seasonally adjusted

Source: Monthly Wages and Salaries Survey - Office for National Statistics

Download chart

[XLS](#) [XLS format](#)

(26 Kb)

Average total pay (including bonuses) in the **private sector** was £461 per week in October 2011. In the three months to October 2011 total pay in the private sector rose by 2.1 per cent on a year earlier. Average regular pay (excluding bonuses) in the private sector was £427 per week in October 2011. In the three months to October 2011 regular pay in the private sector rose by 1.8 per cent on a year earlier.

Average total pay (including bonuses) in the **public sector** was £478 per week in October 2011. In the three months to October 2011 total pay in the public sector rose by 2.1 per cent on a year earlier. Average total pay in the public sector, excluding financial services, was £468 per week in October 2011. In the three months to October 2011 total pay in the public sector, excluding financial services, rose by 1.7 per cent on a year earlier. Average regular pay (excluding bonuses) in the public sector was £474 per week in October 2011. In the three months to October 2011 regular pay in the public sector rose by 2.1 per cent on a year earlier. Average regular pay in the public sector, excluding financial services, was £466 per week in October 2011. In the three months to October 2011 regular pay in the public sector, excluding financial services, rose by 1.8 per cent on a year earlier.

Labour productivity

Whole economy output per worker is the ratio of output and employment while unit labour costs is the ratio of total labour costs to output. Whole economy output per worker was unchanged between the first and second quarters of 2011. Whole economy unit labour costs increased by 0.3 per cent between the first two quarters of 2011. Further information is available in the [Labour Productivity Statistical Bulletin](#).

Output per worker and unit labour costs, percentage change on quarter (seasonally adjusted)



Source: Office for National Statistics

Download chart

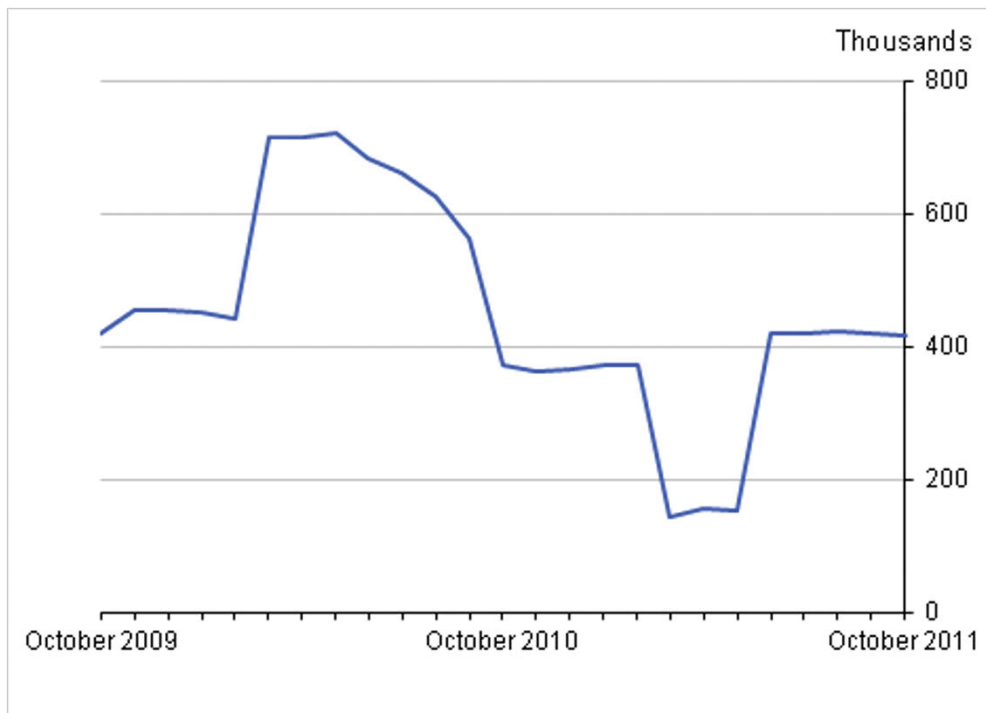
[XLS](#) [XLS format](#)

(22 Kb)

Labour disputes (not seasonally adjusted)

Labour disputes measures disputes (ie, strikes) connected with terms and conditions of employment. In October 2011, there were 11,000 working days lost from thirteen stoppages. In the twelve months to October 2011, there were 417,000 working days lost from 135 stoppages.

Working days lost cumulative 12 month totals, not seasonally adjusted



Source: Labour Disputes Statistics - Office for National Statistics

Download chart

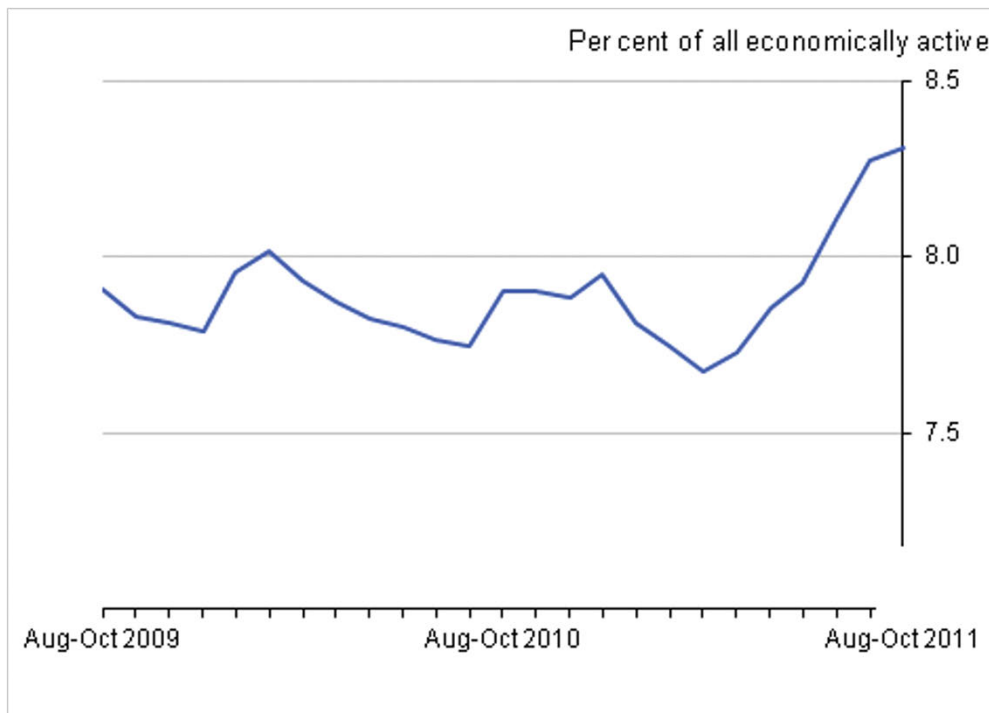
[XLS](#) [XLS format](#)

(26.5 Kb)

Unemployment

Unemployment measures people without a job who have been actively seeking work and are available to start work if a job is offered. The unemployment rate was 8.3 per cent in the three months to October 2011, up 0.4 percentage points from the three months to July 2011 and from a year earlier. Unemployment rates are calculated, in accordance with international guidelines, as the percentage of all economically active people in the relevant population group.

Unemployment rate (aged 16+), seasonally adjusted



Source: Labour Force Survey - Office for National Statistics

Download chart

[XLS](#) [XLS format](#)

(26 Kb)

The number of unemployed people was 2.64 million in the three months to October 2011, up 128,000 from the three months to July 2011 and up 139,000 from a year earlier. The number of unemployed men was 1.53 million in the three months to October 2011, up 83,000 from the three months to July 2011. The number of unemployed women was 1.10 million in the three months to October 2011, up 45,000 from the three months to July 2011. The number of people unemployed for over one year was 868,000 in the three months to October 2011, up 19,000 from the three months to July 2011. The number of people unemployed for over two years was 430,000 in the three months to October 2011, up 15,000 from the three months to July 2011.

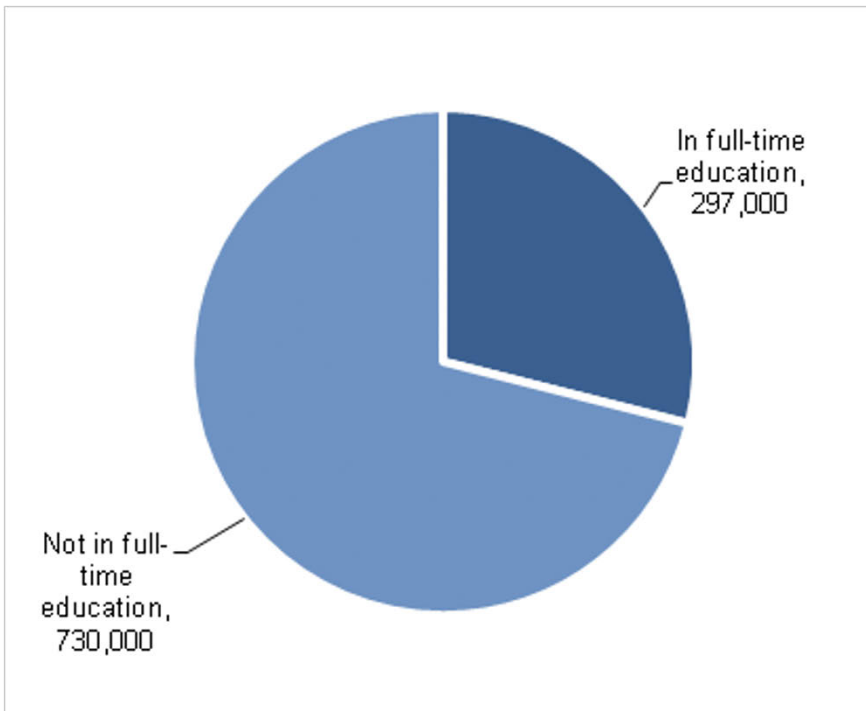
Youth unemployment

The unemployment rate for 16 to 24 year olds was 22.0 per cent of the economically active population for that age group in the three months to October 2011, up 1.2 percentage points from the three months to July 2011. There were 1.03 million unemployed 16 to 24 year olds in the three months to October 2011, up 54,000 from the three months to July 2011.

The number of unemployed 16 to 17 year olds increased by 8,000 on the quarter to reach 211,000 and the number of unemployed 18 to 24 year olds rose by 46,000 on the quarter to reach 815,000.

In accordance with international guidelines, people in full-time education are included in the youth unemployment estimates if they have been looking for work within the last four weeks and are available to start work within the next two weeks. Excluding people in full-time education, there were 730,000 unemployed 16 to 24 year olds in the three months to October 2011, up 21,000 from the three months to July 2011. The unemployment rate for 16 to 24 year olds not in full-time education was 20.7 per cent of the economically active population, up 0.8 percentage points from the three months to July 2011.

Youth unemployment (aged 16 to 24) August to October 2011, seasonally adjusted



Source: Labour Force Survey - Office for National Statistics

Download chart

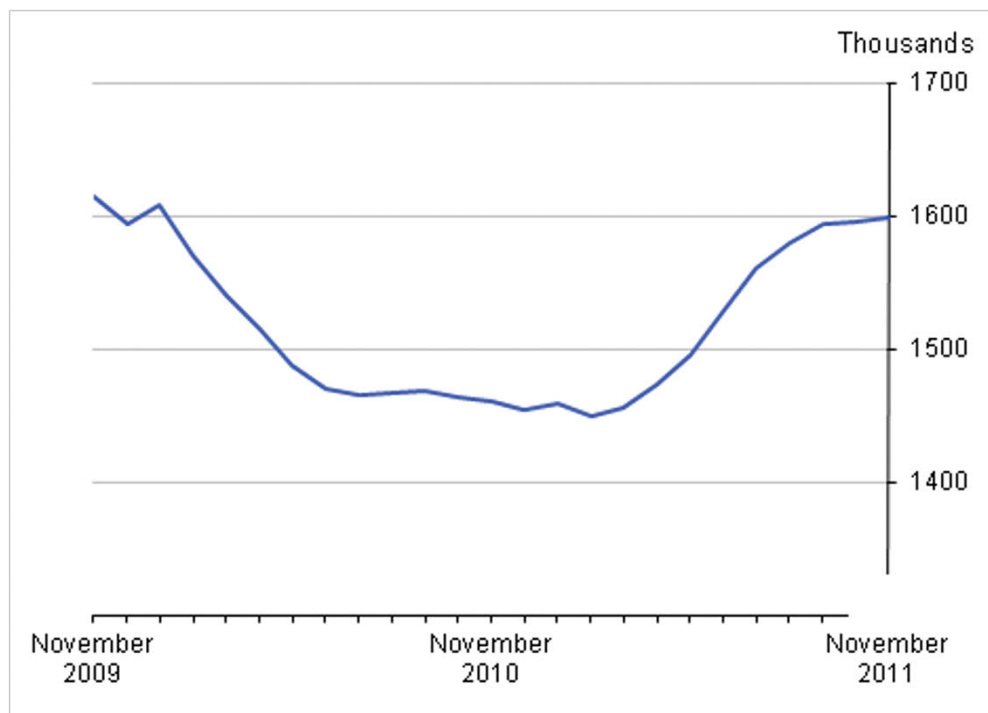
[XLS](#) [XLS format](#)
(25 Kb)

Claimant count

The claimant count measures the number of people claiming Jobseeker's Allowance (JSA) and differs from unemployment (which measures people who meet the internationally agreed definition of unemployment). The claimant count can be affected by changes to the overall benefits system. For example, from late 2008 until mid-2011 changes in eligibility rules for Lone Parent Income Support resulted in fewer lone parents (predominantly women) being able to claim that benefit resulting in more lone parents claiming JSA while they look for work. From April 2011, the Dept. for Work and Pensions has been re-assessing claimants of Incapacity Benefit (IB) resulting in some people who have been declared ineligible for IB claiming JSA while they look for work. The effect of this exercise on the claimant count so far is likely to have been small.

The claimant count in November 2011 was 1.60 million, up 3,000 on the previous month and up 138,600 on a year earlier. The claimant count rate was 5.0 per cent, unchanged on the previous month but up 0.4 percentage points from a year earlier.

Claimant count, seasonally adjusted



Source: Office for National Statistics, Work and Pensions

Download chart

[XLS](#) [XLS format](#)
(25.5 Kb)

Comparison between unemployment and the claimant count

Unemployment is measured using the Labour Force Survey and estimates are published for three month average rolling time periods. Unemployed people in the UK are:

- without a job, have actively sought work in the last four weeks and are available to start work in the next two weeks or;
- out of work, have found a job and are waiting to start it in the next two weeks

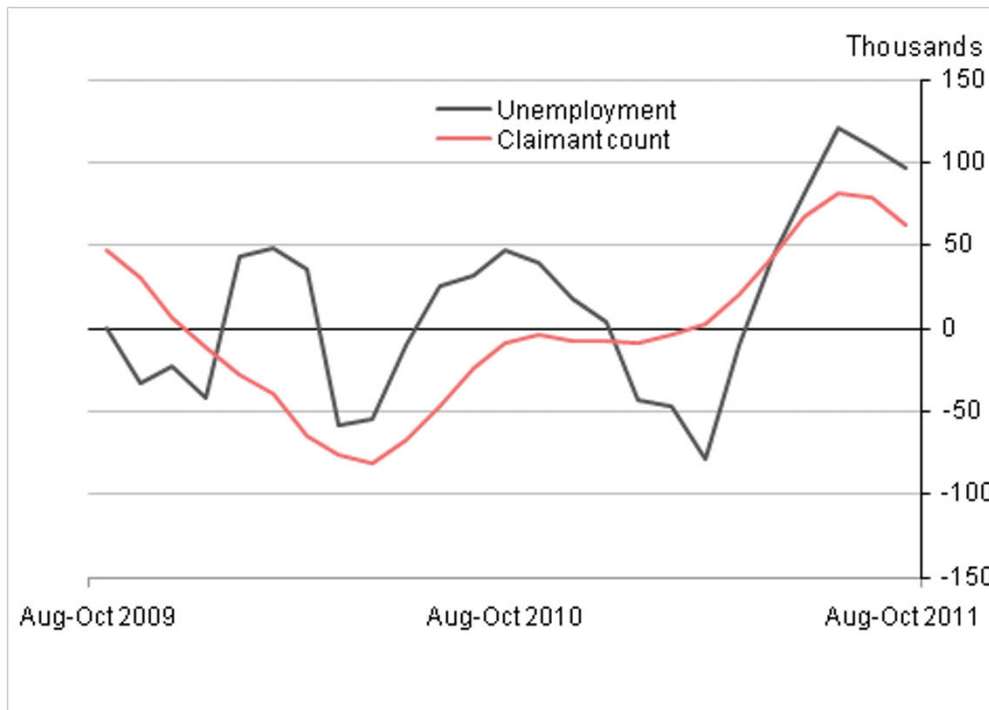
People who meet these criteria are classified as unemployed irrespective of whether or not they claim Jobseeker's Allowance or other benefits.

The claimant count measures the number of people claiming unemployment-related benefits: since October 1996 this has been the number of people claiming Jobseeker's Allowance (JSA). Some JSA claimants will not be classified as unemployed. For example, people in employment working less than 16 hours a week can be eligible to claim JSA depending on their income.

The chart below and the associated spreadsheet compare movements in unemployment and the claimant count for the same three-monthly average time periods. The unemployment estimates shown in this comparison exclude unemployed people in the 16 to 17 and 65 and over age groups as well as unemployed people aged from 18 to 24 in full-time education. This provides a more meaningful comparison with the claimant count than total unemployment because people in these population groups are not usually eligible to claim JSA.

When unemployment and the claimant count are compared for the same time periods (three-monthly averages) and for the same age groups (people aged from 18 to 64), the movements in the two series over the latest quarter are fairly close. For this age group, between May-July and August-October 2011, unemployment increased by 96,000 and the claimant count increased by 62,000. The chart below, and the associated spreadsheet, compares quarterly changes in unemployment and the claimant count for people aged from 18 to 64 for the last two years.

Quarterly changes in unemployment and the claimant count for those aged from 18 to 64 (seasonally adjusted)



Source: Office for National Statistics, Work and Pensions

Notes:

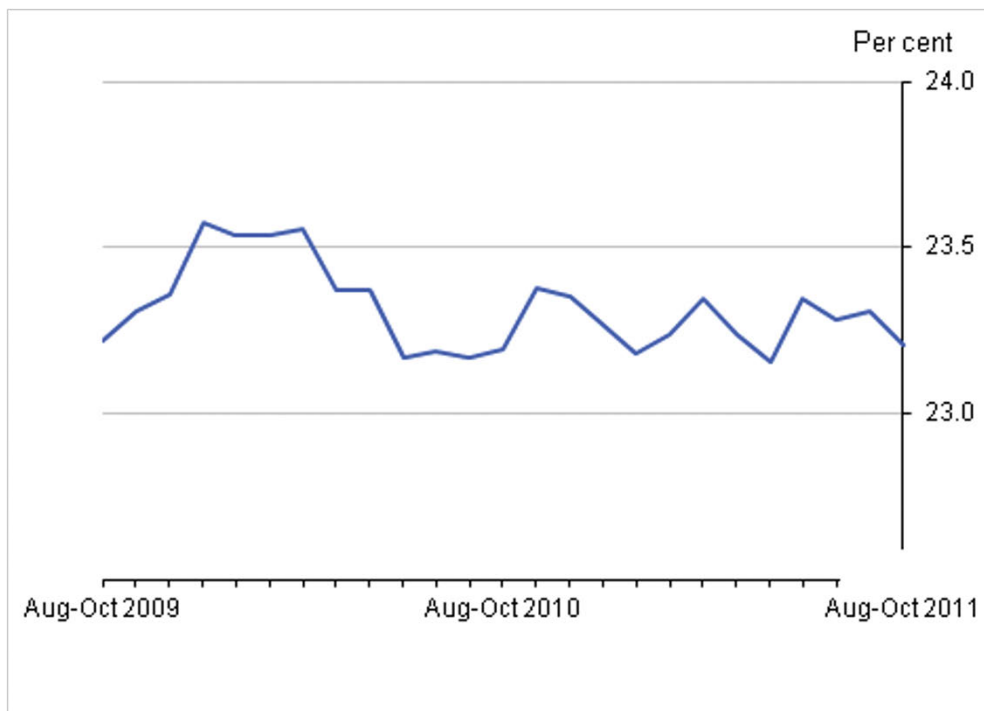
1. Unemployment estimates are sourced from the Labour Force Survey (a survey of households). The unemployment figures in this chart exclude unemployed people aged from 18 to 24 in full-time education.
2. Claimant count estimates are sourced from administrative data from Jobcentre Plus (part of the Dept. for Work and Pensions).

Download chart[XLS](#) [XLS format](#)

(64.5 Kb)

Economic inactivity

Economically inactive people are not in employment but do not meet the internationally accepted definition of unemployment because they have not been seeking work and/or they are unable to start work. The economic inactivity rate for those aged from 16 to 64 was 23.2 per cent in the three months to October 2011, down 0.1 percentage point on the three months to July 2011 but unchanged from a year earlier. The number of economically inactive people aged from 16 to 64 fell by 54,000 over the quarter but rose by 37,000 over the year, to reach 9.33 million in the three months to October 2011.

Economic inactivity rate (aged 16 to 64), seasonally adjusted

Source: Labour Force Survey - Office for National Statistics

Download chart[XLS](#) [XLS format](#)

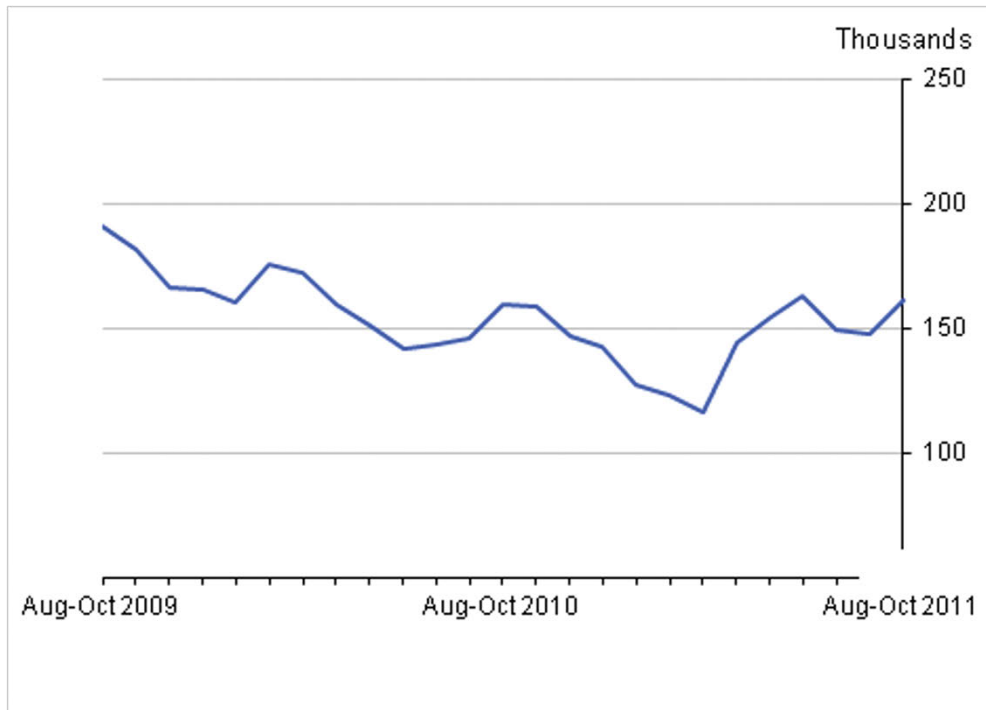
(26 Kb)

Redundancies

Redundancies measures the number of people who have been made redundant or have taken voluntary redundancy. In the three months to October 2011, 161,000 people had become redundant in the three months before the Labour Force Survey interviews, down 1,000 from the three months

to July 2011 but up 2,000 from a year earlier. The redundancy rate was 6.5 per 1,000 employees, unchanged on the previous quarter but up 0.1 percentage point on a year earlier.

Redundancies, seasonally adjusted



Source: Labour Force Survey - Office for National Statistics

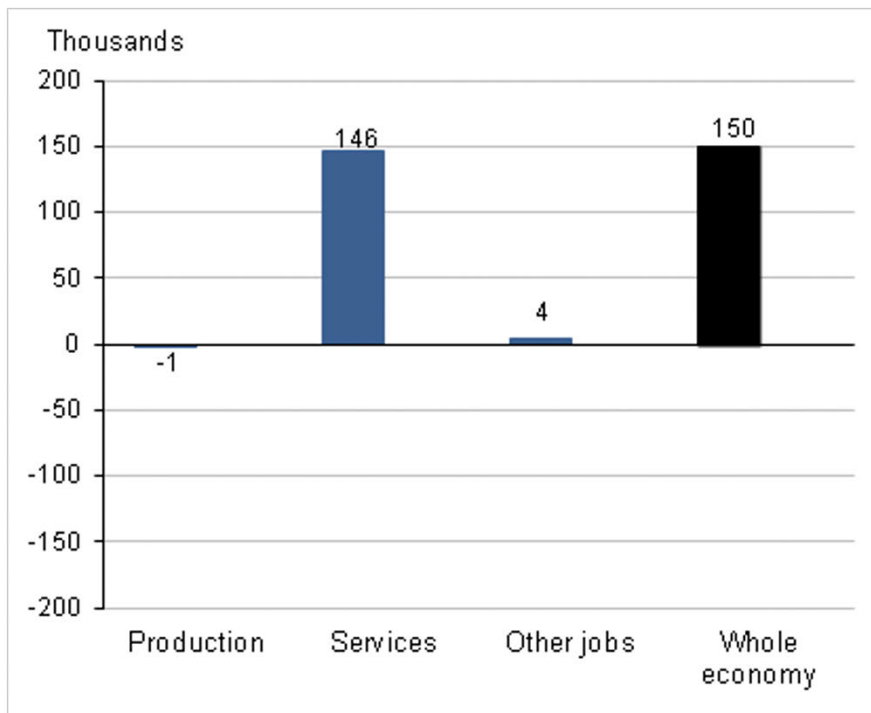
Download chart

[XLS](#) [XLS format](#)

(26 Kb)

Jobs

Workforce jobs measures the number of filled jobs in the economy. It differs from the number of people in employment as some people have more than one job. A comparison between estimates of employment and jobs is available in an [article published on the website](#). There were 31.27 million workforce jobs in September 2011, up 150,000 over the quarter and up 89,000 on a year earlier. The sector showing the largest increase in jobs over the quarter was administrative and support services activities which increased by 66,000 to reach 2.40 million.

Workforce jobs changes on quarter between June and September 2011, seasonally adjusted

Source: Office for National Statistics

Download chart

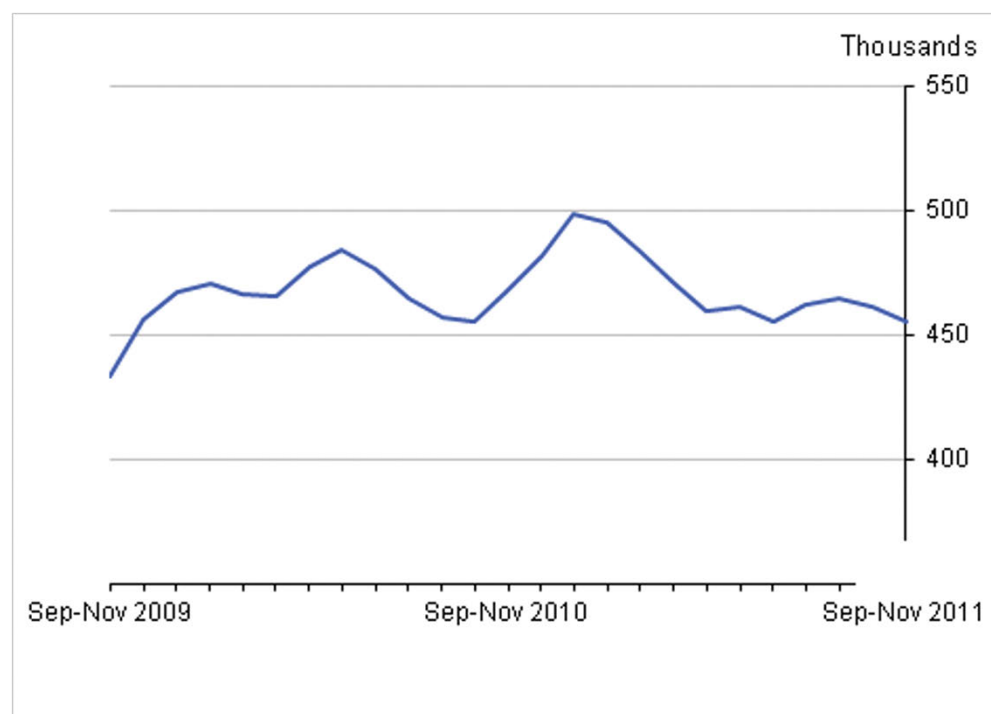
[XLS](#) [XLS format](#)

(25 Kb)

Vacancies

Vacancies are defined as positions for which employers are actively seeking to recruit outside their business or organisation. There were 455,000 job vacancies in the three months to November 2011, down 8,000 on the three months to August 2011 and down 13,000 on a year earlier. There were 1.7 vacancies per 100 employee jobs in the three months to November 2011, virtually unchanged on the previous quarter but down 0.1 percentage point on the year.

Vacancies, seasonally adjusted



Source: Vacancy Survey - Office for National Statistics

Download chart

[XLS](#) [XLS format](#)
(26 Kb)

Data tables

The [Index of Data tables](#) lists all of the regularly published labour market spreadsheets. These spreadsheets can be accessed from hyperlinks within this [Index](#). The pdf version of this Statistical Bulletin includes all of the tables which appeared in the old style Labour Market Statistical Bulletin pdf files as published by ONS before the introduction of the new website on 27 August 2011.

Revisions

One indication of the reliability of the key indicators in this Statistical Bulletin can be obtained by monitoring the size of revisions. Data tables [EMP17](#), [UNEM04](#), [JOBS05](#) and [CLA04](#) record the size and pattern of revisions over the last five years. These indicators only report summary measures for revisions. The revised data itself may be subject to sampling or other sources of error. The ONS standard presentation is to show five years worth of revisions (60 observations for a monthly series, 20 for a quarterly series).

Labour market statistics are revised in line with the [revisions policy](#).

Sampling variability and seasonal adjustment

Sampling variability

[Data table A11](#) shows sampling variabilities, calculated on not seasonally adjusted data, for the **Labour Force Survey**. These sampling variability ranges represent '95 per cent confidence intervals'. It is expected that in 95 per cent of samples the range would contain the true value.

The sampling variability of the three month average **vacancies** level (95 per cent confidence interval) is around +/- 1.5 per cent of that level.

The sampling variabilities of the whole economy single month **Average Weekly Earnings** growth rates (95 per cent confidence intervals) are as follows:

+/- 0.6 percentage points excluding bonuses.

+/- 0.7 percentage points including bonuses (April to November)

+/- 0.9 percentage points including bonuses (December to March)

Seasonal adjustment

Like many economic indicators, the labour market is affected by factors that tend to occur at around the same time every year; for example school leavers entering the labour market in July and whether Easter falls in March or April. In order to compare movements other than annual changes in labour market statistics, such as since the previous quarter or since the previous month, the data are seasonally adjusted to remove the effects of seasonal factors and the arrangement of the calendar. All estimates discussed in this Statistical Bulletin are seasonally adjusted except where otherwise stated.

Relevant links

Regional and local area labour market statistics

Regional and local area labour market statistics are available from the [Regional Labour Market Statistical Bulletin](#) and the associated data tables and from the [NOMIS® website](#).

Labour market statistics videos and short stories

A number of videos relating to labour market statistics are available on the [ONS You Tube channel](#). A number of stories relating to labour market statistics are available from [NOMIS®](#).

Summary Quality Report

A Summary Quality Report for labour market statistics is available on the [Quality Reports for Business Statistics page](#) of the website.

Statistical contacts

Richard Clegg 01633 455400 (Briefing)

Nick Palmer 01633 455839 (Labour Force Survey)

Jonathan Knight 01633 455253 (Claimant count, vacancies and benefits)

David Matthews 01633 456756 (Workforce jobs & public sector employment)

Eric Crane 01633 455092 (Earnings)

Gaganan Awano 01633 456299 (Labour productivity)

James Scruton 01633 456724 (Labour disputes)

E-mail labour.market@ons.gov.uk

Background notes

1. This month's Statistical Bulletin

There have been revisions to estimates of public sector employment back to the start of the time series in 1999. These revisions take account of late information, updates to seasonal factors, classification changes and re-referencing of survey estimates. There have been small revisions to estimates of vacancies per 100 employee jobs back to the start of the series in 2001 resulting from the correction of a minor error in the calculation of these estimates.

2. Next month's Statistical Bulletin

The presentation of [table CLA03](#), showing estimates of lone parent claimants of Jobseeker's Allowance, will be improved. The table will be expanded to include a new age breakdown. Lone parents who are currently eligible for income support until their youngest child reaches seven, will become ineligible once their youngest child reaches five, from early 2012. This continues the process of reducing the age of eligibility from 16 which started in November 2008. Although this is not a change in the eligibility for Jobseeker's Allowance, it is likely to have an impact on the level of the Claimant Count as lone parents who were not previously looking for work may start to do so. Estimates showing the number of lone parents in the Claimant Count by age of youngest child, spanning the period from before the rule change, are shown at data [table CLA03](#) and at worksheet 10(1) of data [table A01](#).

[Table LABD03](#) (Stoppages of work) will be improved to show information on the cause of disputes in the most recent month, which will be presented alongside the currently published twelve month totals. There will also be additional information made available on disputes continuing from earlier months.

3. Publication policy

Publication dates for 2012 can be found in the Background Notes to the [November 2011 edition of this Statistical Bulletin](#). A list of the job titles of those given [pre-publication access](#) to the contents of this Statistical Bulletin is available on the website.

National Statistics are produced to high professional standards set out in the Code of Practice for Official Statistics. They undergo regular quality assurance reviews to ensure that they meet customer needs. They are produced free from any political interference.

© Crown Copyright 2011.

You may use or re-use this information (not including logos) free of charge in any format or medium, under the terms of the Open Government Licence. To view this licence, visit <http://www.nationalarchives.gov.uk/doc/open-government-licence/> or write to the Information Policy Team, The National Archives, Kew, London TW9 4DU, or email psi@nationalarchives.gov.uk.

Next Publication Date:

18 January 2012

Issuing Body:

Office for National Statistics

Media Contact Details:

Telephone: 0845 604 1858
(8.30am-5:30pm Weekdays)

Emergency out of hours (limited service): 07867 906553

Email:

media.relations@ons.gsi.gov.uk

Summary of labour market statistics published on 14 December 2011

Series	Reference period	Latest estimate	Last time higher	Last time lower	Comparable data start in
Employment level (aged 16+)	Aug-Oct 2011	29.107 million	May-Jul 2011 (29.169 million)	Jul-Sep 2011 (29.069 million)	Jan-Mar 1971
Employment rate (aged 16 to 64)	Aug-Oct 2011	70.3 per cent	Jun-Aug 2011 (70.4 per cent)	Jul-Sep 2011 (70.2 per cent)	Jan-Mar 1971
Unemployment level (aged 16+)	Aug-Oct 2011	2.638 million	Jul-Sep 1994 (2.639 million)	Jul-Sep 2011 (2.622 million)	Jan-Mar 1971
Unemployment rate (aged 16+)	Aug-Oct 2011	8.3 per cent	Nov-Jan 1996 (8.4 per cent)	Jun-Aug 2011 (8.1 per cent)	Jan-Mar 1971
Youth unemployment level (aged 16-24)	Aug-Oct 2011	1.027 million	Never (*)	Jul-Sep 2011 (1.016 million)	Mar-May 1992
Youth unemployment rate (aged 16-24)	Aug-Oct 2011	22.0 per cent	Never	Jul-Sep 2011 (21.9 per cent)	Mar-May 1992
Inactivity level (aged 16 to 64)	Aug-Oct 2011	9.325 million	Jul-Sep 2011 (9.364 million)	Apr-Jun 2011 (9.300 million)	Jan-Mar 1971
Inactivity rate (aged 16 to 64)	Aug-Oct 2011	23.2 per cent	Jul-Sep 2011 (23.3 per cent)	Apr-Jun 2009 (23.1 per cent)	Jan-Mar 1971
Claimant Count level	November 2011	1.599 million	January 2010 (1.608 million)	October 2011 (1.596 million)	January 1971
Claimant Count rate	November 2011	5.0 per cent	August 1997 (5.1 per cent)	August 2011 (4.9 per cent)	January 1971
Average Earnings (total pay)	Aug-Oct 2011	2.0 per cent	Jul-Sep 2011 (2.3 per cent)	Oct-Dec 2010 (1.9 per cent)	Jan-Mar 2001
Average Earnings (regular pay)	Aug-Oct 2011	1.8 per cent	May-Jul 2011 (2.1 per cent)	Jul-Sep 2011 (1.7 per cent)	Jan-Mar 2001
Workforce jobs	September 2011	31.271 million	September 2009 (31.341 million)	June 2011 (31.121 million)	June 1959
Vacancies level	Sep-Nov 2011	455,000	Aug-Oct 2011 (461,000)	Sep-Nov 2009 (433,000)	Apr-Jun 2001
Vacancy ratio (per 100 employee jobs)	Sep-Nov 2011	1.7	Jul-Sep 2011 (1.8)	Sep-Nov 2009 (1.6)	Apr-Jun 2001

(*) The unemployment level for those aged from 16 to 24 is the highest since directly comparable records began in 1992. However earlier data, calculated on a slightly different basis, indicate that the youth unemployment level was higher in the mid-1980s.

INDEX OF TABLES

Data are also available in spreadsheet format at:

<http://www.ons.gov.uk/ons/rel/lms/labour-market-statistics/december-2011/index.html>

SUMMARY

- 1 Summary of headline Labour Force Survey indicators
- 2 Labour market status by age group

EMPLOYMENT AND JOBS

- 3 Full-time, part-time and temporary workers
- 4 Public and private sector employment
- 4(1) Public sector employment by industry
- 4(2) Public sector employment including and excluding financial corporations
- 5 Workforce jobs
- 6 Workforce jobs by industry
- 7 Actual weekly hours worked
- 7(1) Usual weekly hours of work
- 8 Employment levels by country of birth and nationality
- 8(1) Employment rates by country of birth and nationality

UNEMPLOYMENT

- 9 Unemployment by age and duration

CLAIMANT COUNT

- 10 Claimant count levels and rates
- 10(1) Claimant count: lone parent claimants by age of youngest child
- 11 Claimant count by age and duration

ECONOMIC ACTIVITY AND INACTIVITY

- 12 Economic activity by age
- 13 Economic inactivity: reasons
- 14 Educational status, economic activity & inactivity of people aged from 16 to 24

EARNINGS & LABOUR PRODUCTIVITY

- 15 Average weekly earnings – total pay
- 15(1) Average weekly earnings – bonus pay
- 16 Average weekly earnings – regular pay
- 17 Labour productivity

REGIONAL AND INTERNATIONAL SUMMARY

- 18 Regional labour market summary
- 19 International comparisons

LABOUR DISPUTES

- 20 Labour disputes

VACANCIES

- 21 Vacancies by size of business
- 21(1) Vacancies and unemployment
- 22 Vacancies by industry

REDUNDANCIES

- 23 Redundancies levels and rates
- 24 Redundancies by industry

BENEFITS

- 25 Key out of work benefits

SUMMARY

United Kingdom
(thousands) seasonally
adjusted

1 Summary of headline LFS¹ indicators

	LFS household population ¹		Headline indicators					
			Employment		Unemployment		Inactivity	
	All aged 16 & over	All aged 16 to 64	All aged 16 & over	All aged 16 to 64	All aged 16 & over	All aged 16 & over	All aged 16 to 64	All aged 16 to 64
People	MGSL	LF2O	MGRZ	LF24	MGSC	MGSX	LF2M	LF2S
Aug-Oct 2009	49,522	39,834	28,892	70.6	2,480	7.9	9,248	23.2
Aug-Oct 2010	49,911	40,045	29,121	70.6	2,499	7.9	9,288	23.2
Nov-Jan 2011	50,002	40,088	29,159	70.5	2,518	7.9	9,329	23.3
Feb-Apr 2011	50,095	40,133	29,239	70.6	2,430	7.7	9,368	23.3
May-Jul 2011	50,187	40,176	29,169	70.5	2,510	7.9	9,380	23.3
Aug-Oct 2011	50,279	40,181	29,107	70.3	2,638	8.3	9,325	23.2
<i>Change on quarter</i>	92	5	-63	-0.2	128	0.4	-54	-0.1
<i>Change %</i>	0.2	0.0	-0.2		5.1		-0.6	
<i>Change on year</i>	368	136	-14	-0.3	139	0.4	37	0.0
<i>Change %</i>	0.7	0.3	0.0		5.6		0.4	
Men	MGSM	YBTG	MGSA	MGSV	MGSD	MGSY	YBSO	YBTM
Aug-Oct 2009	24,148	19,824	15,404	75.4	1,535	9.1	3,359	16.9
Aug-Oct 2010	24,360	19,934	15,620	75.8	1,458	8.5	3,377	16.9
Nov-Jan 2011	24,411	19,958	15,633	75.7	1,477	8.6	3,391	17.0
Feb-Apr 2011	24,463	19,982	15,703	75.9	1,412	8.3	3,412	17.1
May-Jul 2011	24,514	20,005	15,632	75.5	1,451	8.5	3,457	17.3
Aug-Oct 2011	24,564	20,010	15,573	75.2	1,535	9.0	3,448	17.2
<i>Change on quarter</i>	50	5	-59	-0.3	83	0.5	-9	0.0
<i>Change %</i>	0.2	0.0	-0.4		5.7		-0.3	
<i>Change on year</i>	203	76	-47	-0.6	76	0.4	71	0.3
<i>Change %</i>	0.8	0.4	-0.3		5.2		2.1	
Women	MGSN	LF2P	MGSB	LF25	MGSE	MGSZ	LF2N	LF2T
Aug-Oct 2009	25,374	20,010	13,488	65.9	945	6.5	5,890	29.4
Aug-Oct 2010	25,550	20,111	13,501	65.4	1,041	7.2	5,912	29.4
Nov-Jan 2011	25,591	20,130	13,526	65.4	1,041	7.1	5,938	29.5
Feb-Apr 2011	25,633	20,151	13,536	65.4	1,017	7.0	5,956	29.6
May-Jul 2011	25,674	20,171	13,537	65.4	1,058	7.3	5,923	29.4
Aug-Oct 2011	25,715	20,172	13,534	65.5	1,103	7.5	5,878	29.1
<i>Change on quarter</i>	41	1	-4	0.0	45	0.3	-45	-0.2
<i>Change %</i>	0.2	0.0	0.0		4.2		-0.8	
<i>Change on year</i>	165	61	33	0.0	63	0.4	-34	-0.3
<i>Change %</i>	0.6	0.3	0.2		6.0		-0.6	

Source: Labour Force Survey
Labour market statistics enquiries: labour.market@ons.gov.uk

1. The Labour Force Survey (LFS) is a survey of the population of private households, student halls of residence and NHS accommodation.
2. The headline employment rate is the number of people aged 16 to 64 in employment divided by the population aged 16 to 64.
3. The headline unemployment rate is the number of unemployed people (aged 16+) divided by the economically active population (aged 16+). The economically active population is defined as those in employment plus those who are unemployed.
4. The headline inactivity rate is the number of economically inactive people aged 16 to 64 divided by the population aged 16 to 64.

Note on headline employment, unemployment and inactivity rates

The headline employment and inactivity rates are based on the population aged 16 to 64 but the headline unemployment rate is based on the economically active population aged 16 and over. The employment and inactivity rates for those aged 16 and over are affected by the inclusion of the retired population in the denominators and are therefore less meaningful than the rates for those aged from 16 to 64. However, for the unemployment rate for those aged 16 and over, no such effect occurs as the denominator for the unemployment rate is the economically active population which only includes people in work or actively seeking and able to work.

Note on headline employment, unemployment and inactivity levels

The headline employment and unemployment levels are for those aged 16 and over; they measure all people in work or actively seeking and able to work. However, the headline inactivity level is for those aged 16 to 64. The inactivity level for those aged 16 and over is less meaningful as it includes elderly people who have retired from the labour force.

SUMMARY

2(1) Labour market status by age group

United Kingdom (thousands) seasonally adjusted

	Aged 16 and over						Aged 16-64					
	Employment		Unemployment		Inactivity		Employment		Unemployment		Inactivity	
	Level	Rate	Level	Rate	Level	Rate	Level	Rate	Level	Rate	Level	Rate
People	MGRZ	MGSR	MGSC	MGSX	MGSI	YBTC	LF2G	LF24	LF2I	LF2Q	LF2M	LF2S
Aug-Oct 2009	28,892	58.3	2,480	7.9	18,150	36.7	28,132	70.6	2,454	8.0	9,248	23.2
Aug-Oct 2010	29,121	58.3	2,499	7.9	18,291	36.6	28,276	70.6	2,481	8.1	9,288	23.2
Nov-Jan 2011	29,159	58.3	2,518	7.9	18,325	36.6	28,261	70.5	2,498	8.1	9,329	23.3
Feb-Apr 2011	29,239	58.4	2,430	7.7	18,427	36.8	28,352	70.6	2,412	7.8	9,368	23.3
May-Jul 2011	29,169	58.1	2,510	7.9	18,508	36.9	28,307	70.5	2,489	8.1	9,380	23.3
Aug-Oct 2011	29,107	57.9	2,638	8.3	18,534	36.9	28,248	70.3	2,608	8.5	9,325	23.2
Change on quarter	-63	-0.2	128	0.4	26	0.0	-59	-0.2	119	0.4	-54	-0.1
Change %	-0.2		5.1		0.1		-0.2		4.8		-0.6	
Change on year	-14	-0.5	139	0.4	244	0.2	-28	-0.3	127	0.4	37	0.0
Change %	0.0		5.6		1.3		-0.1		5.1		0.4	
Men	MGSA	MGSS	MGSD	MGSY	MGSJ	YBTD	YBSF	MGSV	YBSI	YBTJ	YBSO	YBTM
Aug-Oct 2009	15,404	63.8	1,535	9.1	7,209	29.9	14,950	75.4	1,515	9.2	3,359	16.9
Aug-Oct 2010	15,620	64.1	1,458	8.5	7,282	29.9	15,113	75.8	1,444	8.7	3,377	16.9
Nov-Jan 2011	15,633	64.0	1,477	8.6	7,301	29.9	15,103	75.7	1,463	8.8	3,391	17.0
Feb-Apr 2011	15,703	64.2	1,412	8.3	7,347	30.0	15,170	75.9	1,400	8.4	3,412	17.1
May-Jul 2011	15,632	63.8	1,451	8.5	7,430	30.3	15,111	75.5	1,438	8.7	3,457	17.3
Aug-Oct 2011	15,573	63.4	1,535	9.0	7,456	30.4	15,044	75.2	1,518	9.2	3,448	17.2
Change on quarter	-59	-0.4	83	0.5	26	0.0	-67	-0.3	80	0.5	-9	0.0
Change %	-0.4		5.7		0.3		-0.4		5.6		-0.3	
Change on year	-47	-0.7	76	0.4	174	0.5	-69	-0.6	74	0.4	71	0.3
Change %	-0.3		5.2		2.4		-0.5		5.1		2.1	
Women	MGSB	MGST	MGSE	MGSZ	MGSK	YBTE	LF2H	LF25	LF2J	LF2R	LF2N	LF2T
Aug-Oct 2009	13,488	53.2	945	6.5	10,941	43.1	13,182	65.9	939	6.6	5,890	29.4
Aug-Oct 2010	13,501	52.8	1,041	7.2	11,008	43.1	13,162	65.4	1,037	7.3	5,912	29.4
Nov-Jan 2011	13,526	52.9	1,041	7.1	11,024	43.1	13,158	65.4	1,035	7.3	5,938	29.5
Feb-Apr 2011	13,536	52.8	1,017	7.0	11,080	43.2	13,182	65.4	1,013	7.1	5,956	29.6
May-Jul 2011	13,537	52.7	1,058	7.3	11,078	43.1	13,196	65.4	1,051	7.4	5,923	29.4
Aug-Oct 2011	13,534	52.6	1,103	7.5	11,078	43.1	13,204	65.5	1,090	7.6	5,878	29.1
Change on quarter	-4	-0.1	45	0.3	0	-0.1	8	0.0	38	0.2	-45	-0.2
Change %	0.0		4.2		0.0		0.1		3.6		-0.8	
Change on year	33	-0.2	63	0.4	70	0.0	42	0.0	53	0.3	-34	-0.3
Change %	0.2		6.0		0.6		0.3		5.1		-0.6	
	Aged 16-17						Aged 18-24					
	Employment		Unemployment		Inactivity		Employment		Unemployment		Inactivity	
	Level	Rate	Level	Rate	Level	Rate	Level	Rate	Level	Rate	Level	Rate
People	YBTO	YBUA	YBVH	YBVK	YCAS	LWEX	YBTR	YBUD	YBVN	YBVQ	YCAV	LWFA
Aug-Oct 2009	409	26.5	197	32.5	938	60.8	3,345	57.8	748	18.3	1,693	29.3
Aug-Oct 2010	371	24.6	208	35.9	928	61.6	3,417	58.6	741	17.8	1,675	28.7
Nov-Jan 2011	354	23.6	215	37.8	930	62.1	3,382	58.0	759	18.3	1,691	29.0
Feb-Apr 2011	362	24.2	203	35.9	928	62.2	3,385	58.0	692	17.0	1,755	30.1
May-Jul 2011	347	23.4	203	36.9	934	62.9	3,345	57.3	769	18.7	1,718	29.5
Aug-Oct 2011	329	22.2	211	39.1	940	63.5	3,303	56.7	815	19.8	1,710	29.3
Change on quarter	-19	-1.2	8	2.2	6	0.6	-42	-0.7	46	1.1	-9	-0.1
Change %	-5.4		3.8		0.6		-1.3		6.0		-0.5	
Change on year	-42	-2.4	3	3.2	12	1.9	-114	-1.9	75	2.0	35	0.6
Change %	-11.4		1.7		1.3		-3.3		10.1		2.1	
Men	YBTP	YBUB	YBVI	YBVL	YCAT	LWEY	YBTS	YBUE	YBVO	YBVR	YCAW	LWFB
Aug-Oct 2009	181	22.9	107	37.2	502	63.6	1,728	58.8	468	21.3	744	25.3
Aug-Oct 2010	168	21.8	106	38.7	497	64.5	1,808	61.0	434	19.4	721	24.3
Nov-Jan 2011	164	21.3	118	41.8	486	63.3	1,781	60.1	441	19.9	740	25.0
Feb-Apr 2011	162	21.2	106	39.5	496	65.0	1,790	60.4	425	19.2	748	25.3
May-Jul 2011	150	19.8	106	41.4	504	66.3	1,754	59.2	452	20.5	757	25.5
Aug-Oct 2011	147	19.4	115	44.0	496	65.4	1,691	57.1	500	22.8	769	26.0
Change on quarter	-4	-0.4	9	2.6	-8	-0.8	-63	-2.1	48	2.3	12	0.4
Change %	-2.4		8.5		-1.6		-3.6		10.6		1.6	
Change on year	-21	-2.4	10	5.3	-2	0.9	-116	-3.9	66	3.5	48	1.6
Change %	-12.5		9.0		-0.3		-6.4		15.3		6.7	
Women	YBTQ	YBUC	YBVJ	YBVM	YCAU	LWEZ	YBTT	YBUF	YBVP	YBVS	YCAX	LWFC
Aug-Oct 2009	228	30.3	90	28.2	436	57.8	1,617	56.8	280	14.7	949	33.4
Aug-Oct 2010	203	27.6	102	33.4	430	58.5	1,609	56.1	307	16.0	954	33.2
Nov-Jan 2011	190	25.9	97	33.9	445	60.8	1,600	55.8	318	16.6	951	33.1
Feb-Apr 2011	200	27.5	97	32.7	431	59.2	1,595	55.6	267	14.4	1,006	35.1
May-Jul 2011	197	27.2	97	33.0	430	59.4	1,591	55.4	317	16.6	961	33.5
Aug-Oct 2011	182	25.2	96	34.5	444	61.5	1,611	56.2	315	16.4	940	32.8
Change on quarter	-15	-2.0	-1	1.5	14	2.1	21	0.8	-2	-0.3	-21	-0.7
Change %	-7.7		-1.3		3.3		1.3		-0.5		-2.2	
Change on year	-21	-2.4	-6	1.1	14	3.0	2	0.1	8	0.3	-13	-0.4
Change %	-10.4		-5.9		3.3		0.1		2.7		-1.4	

Source: Labour Force Survey

Labour market statistics enquiries: labour.market@ons.gov.uk

SUMMARY

2(2) Labour market status by age group

United Kingdom (thousands) seasonally adjusted

	Aged 25-34						Aged 35-49					
	Employment		Unemployment		Inactivity		Employment		Unemployment		Inactivity	
	Level	Rate	Level	Rate	Level	Rate	Level	Rate	Level	Rate	Level	Rate
People	YBTU	YBUG	YCGM	YCGP	YCAV	LWFD	YBTX	YBUJ	YCGS	YCGV	YCBB	LWFG
Aug-Oct 2009	6,228	78.2	526	7.8	1,207	15.2	10,911	81.6	628	5.4	1,840	13.8
Aug-Oct 2010	6,401	78.5	523	7.5	1,231	15.1	10,776	81.1	636	5.6	1,880	14.1
Nov-Jan 2011	6,453	78.7	525	7.5	1,225	14.9	10,740	81.0	628	5.5	1,895	14.3
Feb-Apr 2011	6,493	78.7	541	7.7	1,218	14.8	10,743	81.2	596	5.3	1,894	14.3
May-Jul 2011	6,520	78.6	554	7.8	1,226	14.8	10,722	81.2	603	5.3	1,879	14.2
Aug-Oct 2011	6,502	77.8	590	8.3	1,262	15.1	10,711	81.4	612	5.4	1,841	14.0
Change on quarter	-18	-0.7	36	0.5	36	0.3	-11	0.2	9	0.1	-37	-0.2
Change %	-0.3		6.5		2.9		-0.1		1.6		-2.0	
Change on year	100	-0.7	67	0.8	31	0.0	-66	0.3	-24	-0.2	-38	-0.2
Change %	1.6		12.9		2.5		-0.6		-3.7		-2.0	
Men	YBTV	YBUH	YCGN	YCGQ	YCAZ	LWFE	YBTY	YBUK	YCGT	YCGW	YCBC	LWFH
Aug-Oct 2009	3,409	84.9	324	8.7	280	7.0	5,716	86.6	360	5.9	524	7.9
Aug-Oct 2010	3,542	86.0	297	7.7	278	6.8	5,673	86.5	356	5.9	533	8.1
Nov-Jan 2011	3,555	85.8	298	7.7	290	7.0	5,659	86.4	355	5.9	535	8.2
Feb-Apr 2011	3,565	85.5	298	7.7	306	7.3	5,699	87.2	321	5.3	515	7.9
May-Jul 2011	3,565	85.0	320	8.2	308	7.4	5,704	87.5	318	5.3	500	7.7
Aug-Oct 2011	3,573	84.6	335	8.6	315	7.5	5,685	87.4	315	5.3	504	7.8
Change on quarter	8	-0.4	15	0.3	7	0.1	-19	-0.1	-3	0.0	4	0.1
Change %	0.2		4.5		2.2		-0.3		-1.1		0.9	
Change on year	31	-1.4	38	0.8	37	0.7	12	1.0	-41	-0.7	-29	-0.4
Change %	0.9		12.6		13.2		0.2		-11.5		-5.4	
Women	YBTW	YBUI	YCGO	YCGR	YCBA	LWFF	YBTZ	YBUL	YCGU	YCGX	YCBD	LWFI
Aug-Oct 2009	2,819	71.4	202	6.7	927	23.5	5,195	76.6	268	4.9	1,316	19.4
Aug-Oct 2010	2,859	70.8	225	7.3	953	23.6	5,104	75.8	280	5.2	1,346	20.0
Nov-Jan 2011	2,898	71.4	227	7.3	935	23.0	5,081	75.7	273	5.1	1,360	20.3
Feb-Apr 2011	2,928	71.7	244	7.7	911	22.3	5,044	75.3	275	5.2	1,379	20.6
May-Jul 2011	2,954	72.0	234	7.3	918	22.4	5,018	75.1	285	5.4	1,379	20.6
Aug-Oct 2011	2,928	70.9	255	8.0	947	22.9	5,026	75.5	297	5.6	1,337	20.1
Change on quarter	-26	-1.1	22	0.7	29	0.6	8	0.4	13	0.2	-42	-0.6
Change %	-0.9		9.3		3.1		0.2		4.5		-3.0	
Change on year	69	0.1	30	0.7	-6	-0.7	-77	-0.4	17	0.4	-9	0.1
Change %	2.4		13.3		-0.7		-1.5		6.1		-0.7	
	Aged 50-64						Age 65+					
	Employment		Unemployment		Inactivity		Employment		Unemployment		Inactivity	
	Level	Rate	Level	Rate	Level	Rate	Level	Rate	Level	Rate	Level	Rate
People	LF26	LF2U	LF28	LF2E	LF2A	LF2W	LFK4	LFK6	K5HU	K5HW	LFL4	LFL6
Aug-Oct 2009	7,239	64.8	355	4.7	3,570	32.0	760	7.8	26	3.4	8,902	91.9
Aug-Oct 2010	7,310	64.9	374	4.9	3,575	31.8	845	8.6	18	2.1	9,002	91.3
Nov-Jan 2011	7,333	64.9	371	4.8	3,588	31.8	898	9.1	20	2.2	8,996	90.7
Feb-Apr 2011	7,368	65.1	381	4.9	3,574	31.6	887	8.9	18	1.9	9,058	90.9
May-Jul 2011	7,373	64.9	360	4.7	3,622	31.9	862	8.6	21	2.3	9,128	91.2
Aug-Oct 2011	7,404	65.2	379	4.9	3,572	31.5	859	8.5	30	3.4	9,209	91.2
Change on quarter	31	0.3	19	0.2	-50	-0.4	-4	-0.1	9	1.0	80	0.0
Change %	0.4		5.3		-1.4		-0.4		46.0		0.9	
Change on year	94	0.3	5	0.0	-3	-0.3	13	-0.1	12	1.3	206	-0.1
Change %	1.3		1.3		-0.1		1.6		66.9		2.3	
Men	MGUX	YBUN	MGVM	MGXF	MGWB	LWFK	MGVA	YBUQ	MGVP	MGXI	MGWE	LWFN
Aug-Oct 2009	3,917	71.5	256	6.1	1,308	23.9	454	10.5	20	4.3	3,850	89.0
Aug-Oct 2010	3,924	71.1	251	6.0	1,347	24.4	507	11.4	14	2.7	3,905	88.2
Nov-Jan 2011	3,944	71.2	251	6.0	1,341	24.2	530	11.9	14	2.5	3,910	87.8
Feb-Apr 2011	3,954	71.2	251	6.0	1,346	24.2	533	11.9	13	2.3	3,935	87.8
May-Jul 2011	3,937	70.7	241	5.8	1,388	24.9	522	11.6	14	2.5	3,973	88.1
Aug-Oct 2011	3,948	71.0	253	6.0	1,363	24.5	529	11.6	16	3.0	4,009	88.0
Change on quarter	11	0.2	12	0.3	-25	-0.4	8	0.1	3	0.5	35	-0.1
Change %	0.3		5.0		-1.8		1.5		21.0		0.9	
Change on year	25	-0.1	2	0.0	16	0.1	23	0.2	2	0.3	103	-0.2
Change %	0.6		0.6		1.2		4.5		14.9		2.6	
Women	LF27	LF2V	LF29	LF2F	LF2B	LF2X	LFK5	LFK7	K5HV	K5HX	LFL5	LFL7
Aug-Oct 2009	3,322	58.5	100	2.9	2,262	39.8	306	5.7	*	*	5,052	94.2
Aug-Oct 2010	3,387	59.0	123	3.5	2,228	38.8	339	6.2	*	*	5,097	93.7
Nov-Jan 2011	3,388	58.9	120	3.4	2,247	39.0	368	6.7	*	*	5,086	93.1
Feb-Apr 2011	3,414	59.1	129	3.7	2,229	38.6	354	6.5	*	*	5,123	93.5
May-Jul 2011	3,436	59.4	119	3.4	2,234	38.6	341	6.2	*	*	5,155	93.7
Aug-Oct 2011	3,456	59.7	126	3.5	2,209	38.1	329	5.9	14	4.0	5,200	93.8
Change on quarter	20	0.3	7	0.2	-25	-0.4	-11	-0.3	*	*	45	0.1
Change %	0.6		5.7		-1.1		-3.3		*	*	0.9	
Change on year	69	0.6	3	0.0	-19	-0.7	-9	-0.3	*	*	103	0.1
Change %	2.0		2.8		-0.9		-2.7		*	*	2.0	

Source: Labour Force Survey

Labour market statistics enquiries: labour.market@ons.gov.uk

EMPLOYMENT AND JOBS

3 Full-time, part-time & temporary workers

United Kingdom (thousands of people aged 16 and over), seasonally adjusted

	All in employment					Full-time and part-time workers ¹							
	Total	Employees	Self employed	Unpaid family workers	Government supported training & employment programmes	Total people working full-time	Total people working part-time	Employees working full-time	Employees working part-time	Self-employed people working full-time	Self-employed people working part-time	Total workers with second jobs	
						6	7	8	9	10	11	12	
1	2	3	4	5	6	7	8	9	10	11	12		
People	MGRZ	MGRN	MGRQ	MGRT	MGRW	YCBE	YCBH	YCBK	YCBN	YCBQ	YCBT	YCBW	
Aug-Oct 2009	28,892	24,838	3,866	86	102	21,204	7,688	18,254	6,584	2,899	966	1,142	
Aug-Oct 2010	29,121	24,918	3,971	104	128	21,170	7,951	18,188	6,730	2,927	1,043	1,112	
Nov-Jan 2011	29,159	24,947	3,986	98	128	21,238	7,922	18,287	6,661	2,899	1,087	1,152	
Feb-Apr 2011	29,239	25,049	3,983	90	117	21,286	7,953	18,368	6,681	2,874	1,108	1,145	
May-Jul 2011	29,169	25,019	3,973	88	90	21,339	7,831	18,404	6,615	2,898	1,075	1,131	
Aug-Oct 2011	29,107	24,767	4,139	112	89	21,284	7,823	18,216	6,551	3,015	1,123	1,138	
Change on quarter	-63	-252	166	24	0	-55	-8	-188	-64	118	49	7	
Change %	-0.2	-1.0	4.2	27.0	-0.3	-0.3	-0.1	-1.0	-1.0	4.1	4.5	0.6	
Change on year	-14	-151	168	8	-39	114	-129	28	-179	88	80	26	
Change %	0.0	-0.6	4.2	7.3	-30.3	0.5	-1.6	0.2	-2.7	3.0	7.7	2.4	
Men	MGSA	MGRO	MGRR	MGRU	MGRX	YCBF	YCBI	YCBL	YCBO	YCBR	YCBU	YCBX	
Aug-Oct 2009	15,404	12,549	2,763	34	57	13,550	1,854	11,152	1,397	2,368	395	496	
Aug-Oct 2010	15,620	12,688	2,806	45	81	13,567	2,053	11,176	1,511	2,358	448	463	
Nov-Jan 2011	15,633	12,727	2,793	33	80	13,610	2,023	11,245	1,483	2,337	456	489	
Feb-Apr 2011	15,703	12,794	2,810	27	72	13,643	2,060	11,292	1,502	2,331	479	483	
May-Jul 2011	15,632	12,727	2,820	35	50	13,611	2,021	11,252	1,475	2,341	479	496	
Aug-Oct 2011	15,573	12,574	2,915	41	44	13,595	1,978	11,137	1,437	2,432	482	494	
Change on quarter	-59	-153	95	5	-6	-16	-43	-115	-38	91	4	-2	
Change %	-0.4	-1.2	3.4	15.5	-12.5	-0.1	-2.1	-1.0	-2.6	3.9	0.8	-0.3	
Change on year	-47	-113	108	-4	-37	29	-75	-39	-74	74	34	31	
Change %	-0.3	-0.9	3.9	-9.6	-46.0	0.2	-3.7	-0.3	-4.9	3.1	7.6	6.8	
Women	MGSA	MGRP	MGRS	MGRV	MGRY	YCBG	YCBJ	YCBM	YCBP	YCBS	YCBV	YCBY	
Aug-Oct 2009	13,488	12,289	1,103	52	44	7,654	5,834	7,102	5,186	531	571	646	
Aug-Oct 2010	13,501	12,231	1,164	59	47	7,603	5,898	7,012	5,219	569	595	649	
Nov-Jan 2011	13,526	12,220	1,193	65	48	7,627	5,899	7,042	5,178	562	631	663	
Feb-Apr 2011	13,536	12,255	1,173	63	45	7,643	5,892	7,076	5,179	544	629	662	
May-Jul 2011	13,537	12,292	1,153	53	40	7,728	5,810	7,152	5,140	557	596	635	
Aug-Oct 2011	13,534	12,193	1,224	71	45	7,689	5,845	7,079	5,114	583	641	643	
Change on quarter	-4	-99	71	18	6	-39	35	-73	-26	26	45	8	
Change %	0.0	-0.8	6.2	34.7	15.1	-0.5	0.6	-1.0	-0.5	4.8	7.5	1.3	
Change on year	33	-38	60	12	-2	86	-53	67	-104	14	46	-5	
Change %	0.2	-0.3	5.1	20.2	-3.4	1.1	-0.9	1.0	-2.0	2.5	7.7	-0.8	
	Temporary employees (reasons for temporary working)						Part-time workers (reasons for working part-time) ²						
	Total	Could not find permanent job	% that could not find permanent job	Did not want permanent job	Had a contract with period of training	Some other reason	Total ³	Could not find full-time job	% that could not find full-time job	Did not want full-time job	Ill or disabled	Student or at school	
	13	14	15	16	17	18	19	20	21	22	23	24	25
People	YCBZ	YCCC	YCCF	YCCI	YCCL	YCCO	YCCR	YCCU	YCCX	YCDA	YCDD	YCDG	YCDJ
Aug-Oct 2009	1,428	5.8	467	32.7	362	85	514	7,549	1,006	13.3	5,162	188	1,149
Aug-Oct 2010	1,578	6.3	589	37.3	364	92	533	7,771	1,159	14.9	5,265	163	1,131
Nov-Jan 2011	1,554	6.2	580	37.3	336	94	544	7,749	1,167	15.1	5,298	165	1,066
Feb-Apr 2011	1,595	6.4	580	36.3	358	93	564	7,792	1,214	15.6	5,274	185	1,066
May-Jul 2011	1,561	6.2	579	37.1	351	86	545	7,990	1,284	16.7	5,145	179	1,023
Aug-Oct 2011	1,524	6.2	601	39.4	323	85	514	7,675	1,273	16.6	5,152	181	1,018
Change on quarter	-36	-0.1	23	2.4	-28	-1	-31	-15	-11	-0.1	7	3	-4
Change %	-2.3		3.9		-7.9	-0.7	-5.6	-0.2	-0.9		0.1	1.5	-0.4
Change on year	-53	-0.2	12	2.1	-41	-7	-18	-96	114	1.7	-113	19	-113
Change %	-3.4		2.1		-11.1	-7.5	-3.4	-1.2	9.8		-2.1	11.4	-10.0
Men	YCCA	YCCD	YCCG	YCCJ	YCCM	YCCP	YCCS	YCCV	YCCY	YCDB	YCDE	YCDH	YCDK
Aug-Oct 2009	672	5.4	247	36.8	137	49	238	1,792	430	24.0	775	77	491
Aug-Oct 2010	756	6.0	315	41.6	150	49	242	1,959	514	26.3	862	71	497
Nov-Jan 2011	737	5.8	301	40.8	145	52	239	1,939	505	26.0	873	73	471
Feb-Apr 2011	770	6.0	313	40.7	147	51	259	1,982	545	27.5	874	83	460
May-Jul 2011	767	6.0	310	40.3	154	47	256	1,953	583	29.8	858	72	421
Aug-Oct 2011	733	5.8	310	42.3	135	42	246	1,920	560	29.2	852	66	422
Change on quarter	-35	-0.2	0	1.9	-20	-5	-10	-34	-23	-0.7	-7	-5	1
Change %	-4.5		0.0		-12.8	-10.1	-4.0	-1.7	-3.9		-0.8	-7.6	0.3
Change on year	-24	-0.1	-5	0.7	-16	-7	4	-39	46	2.9	-11	-5	-75
Change %	-3.1		-1.6		-10.5	-13.9	1.6	-2.0	8.9		-1.2	-6.4	-15.1
Women	YCCB	YCC E	YCC H	YCC K	YCC N	YCC Q	YCC T	YCC W	YCC Z	YCC D	YCC F	YCC I	YCC L
Aug-Oct 2009	757	6.2	220	29.1	225	36	276	5,757	576	10.0	4,387	111	659
Aug-Oct 2010	821	6.7	274	33.4	214	43	290	5,813	645	11.1	4,403	92	634
Nov-Jan 2011	817	6.7	279	34.2	191	42	305	5,811	663	11.4	4,425	92	595
Feb-Apr 2011	825	6.7	266	32.3	211	43	305	5,810	669	11.5	4,400	101	606
May-Jul 2011	793	6.5	269	33.9	197	39	289	5,736	701	12.2	4,287	107	602
Aug-Oct 2011	792	6.5	292	36.8	189	43	268	5,755	713	12.4	4,301	115	596
Change on quarter	-2	0.0	23	2.9	-8	4	-20	19	12	0.2	14	8	-6
Change %	-0.2		8.4		-4.0	10.6	-7.1	0.3	1.7		0.3	7.6	-0.9
Change on year	-30	-0.2	17	3.4	-25	0	-22	-57	68	1.3	-102	23	-38
Change %	-3.6		6.3		-11.6	-0.2	-7.6	-1.0	10.6		-2.3	25.2	-6.0

Relationship between columns: 1= 2+3+4+5; 1=6+7; 2=8+9; 3=10+11; 13=15+17+18+19; 20=9+11 ;14=13/2; 16=15/3; 22=21/20

Source: Labour Force Survey

Labour market statistics enquiries: labour.market@ons.gov.uk

1. The split between full-time and part-time employment is based on respondents' self-classification.

2. These series cover Employees and Self-employed only. These series include some temporary employees recorded in columns 13 to 19.

3. The total includes those who did not give a reason for working part-time and it therefore does not equal the sum of columns 21, 23, 24 and 25.

EMPLOYMENT AND JOBS

4 Public and private sector employment

United Kingdom (thousands of people aged 16 and over), seasonally adjusted

	Public sector ¹		Private sector ²		Total employment ³
	(000s)	(%)	(000s)	(%)	(000s)
	1	2	3	4	5
	G7AU	G9BZ	G7K5	G9C2	G7GO
Sep 09 (r)	6,353	22.0	22,539	78.0	28,892
Dec 09 (r)	6,352	22.0	22,490	78.0	28,842
Mar 10 (r)	6,323	21.9	22,539	78.1	28,862
Jun 10 (r)	6,292	21.6	22,853	78.4	29,145
Sep 10 (r)	6,263	21.5	22,858	78.5	29,121
Dec 10 (r)	6,214	21.3	22,945	78.7	29,159
Mar 11 (r)	6,180	21.1	23,059	78.9	29,239
Jun 11 (r)	6,054	20.8	23,115	79.2	29,169
Sep 11	5,987	20.6	23,120	79.4	29,107
Change on quarter	-67	-0.2	5	0.2	-63
Change %	-1.1		0.0		-0.2
Change on year	-276	-0.9	262	0.9	-14
Change %	-4.4		1.1		0.0

Enquiries 01633 456756

Source: Labour Force Survey (LFS) and returns from public sector organisations

Relationship between columns: 2 = 1/5*100; 3 = 5-1; 4 = 3/5*100

See footnotes under table 4(2)

4(1) Public sector employment by industry

United Kingdom (thousands of people aged 16 and over), seasonally adjusted

	Construction	HM Forces ⁴	Police (including civilians)	Public administration	Of which: Civil Service ⁵	Education	National Health Service	Other health and social work	Other (including financial corporations) ¹	Total public sector employment ^{1 6}
	1	2	3	4	5	6	7	8	9	10
	G7ER	G7EU	G7EX	G7F2	G7D6	G7F5	G7FG	G7FJ	G7FM	G7AU
Sep 09 (r)	50	199	295	1,230	534	1,664	1,598	362	944	6,353
Dec 09 (r)	51	198	295	1,226	533	1,678	1,614	364	928	6,352
Mar 10 (r)	50	199	294	1,225	528	1,675	1,606	359	916	6,323
Jun 10 (r)	49	197	292	1,213	522	1,689	1,596	360	907	6,292
Sep 10 (r)	49	196	289	1,191	514	1,684	1,591	353	903	6,263
Dec 10 (r)	47	195	285	1,187	506	1,665	1,595	350	892	6,214
Mar 11 (r)	46	194	282	1,176	513	1,652	1,591	349	889	6,180
Jun 11 (r)	45	193	277	1,133	488	1,632	1,565	342	874	6,054
Sep 11	44	191	273	1,117	479	1,602	1,557	330	865	5,987
Change on quarter	-1	-2	-4	-16	-9	-30	-8	-12	-9	-67
Change %	-2.2	-1.0	-1.4	-1.4	-1.8	-1.8	-0.5	-3.5	-1.0	-1.1
Change on year	-5	-5	-16	-74	-35	-82	-34	-23	-38	-276
Change %	-10.2	-2.6	-5.5	-6.2	-6.8	-4.9	-2.1	-6.5	-4.2	-4.4

Enquiries 01633 456756

Source: returns from public sector organisations

See footnotes under table 4(2)

4(2) Public sector employment including and excluding financial corporations

United Kingdom (thousands of people aged 16 and over), seasonally adjusted

	Public sector excluding financial corporations	Publicly owned financial corporations ⁷	Total public sector employment ¹
	K8PE	K8PD	G7AU
	Sep 09 (r)	6,124	229
Dec 09 (r)	6,134	218	6,352
Mar 10 (r)	6,105	218	6,323
Jun 10 (r)	6,071	221	6,292
Sep 10 (r)	6,047	216	6,263
Dec 10 (r)	6,002	212	6,214
Mar 11 (r)	5,965	215	6,180
Jun 11 (r)	5,840	214	6,054
Sep 11	5,781	206	5,987
Change on quarter	-59	-8	-67
Change %	-1.0	-3.9	-1.1
Change on year	-266	-10	-276
Change %	-4.4	-4.8	-4.4

Enquiries 01633 456756

Source: returns from public sector organisations

1. This series includes publicly owned financial corporations. Royal Bank of Scotland Group plc and Lloyds Banking Group plc are classified to the public sector from 13 October 2008. They are therefore included in the public sector estimates from December 2008 onwards but not for earlier periods.

2. Estimated as the difference between LFS total employment and the data from public sector organisations.

3. LFS employment data for March refer to February-April, June refers to May-July, September refers to August-October and December refers to November-January.

4. This series excludes locally engaged staff stationed outside the United Kingdom.

5. This series excludes the Northern Ireland Civil Service.

6. This series does not exactly equal the sum of columns 1 to 4 and 6 to 9 because each series is independently seasonally adjusted.

7. This series includes publicly owned financial corporations, excluding insurance and pension funding, as defined by Section 64 of Standard Industrial Classification 2007.

EMPLOYMENT AND JOBS

5 Workforce jobs

United Kingdom (thousands), seasonally adjusted

	Workforce jobs	Employee jobs	Self-employment jobs ¹	HM Forces	Government-supported trainees ¹
	1	2	3	4	5
	DYDC	BCAJ	DYZN	LOJX	LOJU
Sep 09	31,341	26,876	4,218	199	47
Dec 09	31,240	26,776	4,218	198	47
Mar 10	31,242	26,689	4,305	199	49
Jun 10	31,201	26,615	4,341	198	47
Sep 10	31,182	26,605	4,338	197	43
Dec 10	31,233	26,618	4,377	195	44
Mar 11	31,262	26,698	4,340	194	31
Jun 11 (r)	31,121	26,557	4,341	193	30
Sep 11	31,271	26,536	4,513	192	30
<i>Change on quarter</i>	<i>150</i>	<i>-20</i>	<i>172</i>	<i>-1</i>	<i>-1</i>
<i>Change %</i>	<i>0.5</i>	<i>-0.1</i>	<i>4.0</i>	<i>-0.6</i>	<i>-1.7</i>
<i>Change on year</i>	<i>89</i>	<i>-69</i>	<i>176</i>	<i>-5</i>	<i>-13</i>
<i>Change %</i>	<i>0.3</i>	<i>-0.3</i>	<i>4.0</i>	<i>-2.5</i>	<i>-31.2</i>

Relationship between columns: 1=2+3+4+5

See footnotes under table 6

6 Workforce jobs by industry

Standard Industrial Classification (2007)

United Kingdom (thousands), seasonally adjusted

SIC 2007 sections	All jobs	Agriculture, forestry & fishing	Mining & quarrying	Manufacturing	Electricity, gas, steam & air conditioning supply	Water supply, sewerage, waste & remediation activities	Construction	Wholesale & retail trade; repair of motor vehicles and motor cycles	Transport & storage	Accommodation & food service activities	Information & communication
	A-S	A	B	C	D	E	F	G	H	I	J
	DYDC	JWR5	JWR6	JWR7	JWR8	JWR9	JWS2	JWS3	JWS4	JWS5	JWS6
Sep 09	31,341	418	63	2,618	123	164	2,168	4,814	1,519	1,939	1,155
Dec 09	31,240	402	62	2,609	120	161	2,180	4,760	1,497	1,916	1,161
Mar 10	31,242	429	63	2,570	138	158	2,110	4,751	1,459	1,889	1,131
Jun 10	31,201	463	60	2,557	143	158	2,158	4,755	1,477	1,904	1,114
Sep 10	31,182	460	62	2,535	132	153	2,137	4,759	1,472	1,927	1,124
Dec 10	31,233	473	62	2,554	135	159	2,129	4,791	1,457	1,898	1,137
Mar 11	31,262	437	59	2,545	148	170	2,095	4,799	1,494	1,894	1,174
Jun 11 (r)	31,121	437	58	2,525	137	171	2,089	4,752	1,481	1,938	1,181
Sep 11	31,271	459	60	2,511	148	169	2,071	4,777	1,474	1,982	1,193
<i>Change on quarter</i>	<i>150</i>	<i>22</i>	<i>3</i>	<i>-14</i>	<i>11</i>	<i>-1</i>	<i>-18</i>	<i>25</i>	<i>-7</i>	<i>44</i>	<i>12</i>
<i>Change %</i>	<i>0.5</i>	<i>5.1</i>	<i>4.6</i>	<i>-0.6</i>	<i>8.2</i>	<i>-0.9</i>	<i>-0.8</i>	<i>0.5</i>	<i>-0.5</i>	<i>2.2</i>	<i>1.0</i>
<i>Change on year</i>	<i>89</i>	<i>-1</i>	<i>-2</i>	<i>-25</i>	<i>16</i>	<i>16</i>	<i>-65</i>	<i>17</i>	<i>2</i>	<i>55</i>	<i>68</i>
<i>Change %</i>	<i>0.3</i>	<i>-0.2</i>	<i>-3.5</i>	<i>-1.0</i>	<i>12.3</i>	<i>10.4</i>	<i>-3.1</i>	<i>0.4</i>	<i>0.1</i>	<i>2.9</i>	<i>6.1</i>
SIC 2007 sections	Financial & insurance activities	Real estate activities	Professional scientific & technical activities	Administrative & support service activities	Public admin & defence; compulsory social security ²	Education	Human health & social work activities	Arts, entertainment & recreation	Other service activities	Total services	
	K	L	M	N	O	P	Q	R	S	G-S	
	JWS7	JWS8	JWS9	JWT2	JWT3	JWT4	JWT5	JWT6	JWT7	JWT8	
Sep 09	1,136	456	2,341	2,285	1,779	2,718	3,956	834	851	25,785	
Dec 09	1,133	445	2,346	2,298	1,776	2,735	3,967	818	852	25,705	
Mar 10	1,095	457	2,427	2,366	1,778	2,720	4,016	848	836	25,773	
Jun 10	1,125	452	2,356	2,320	1,757	2,719	4,027	850	806	25,662	
Sep 10	1,135	443	2,350	2,322	1,735	2,715	4,060	868	791	25,701	
Dec 10	1,136	416	2,362	2,343	1,720	2,672	4,102	869	818	25,721	
Mar 11	1,139	426	2,373	2,317	1,700	2,682	4,084	882	842	25,807	
Jun 11 (r)	1,135	416	2,394	2,330	1,658	2,645	4,077	872	826	25,704	
Sep 11	1,124	417	2,446	2,395	1,632	2,620	4,040	879	872	25,851	
<i>Change on quarter</i>	<i>-11</i>	<i>1</i>	<i>52</i>	<i>66</i>	<i>-25</i>	<i>-26</i>	<i>-36</i>	<i>7</i>	<i>46</i>	<i>146</i>	
<i>Change %</i>	<i>-1.0</i>	<i>0.3</i>	<i>2.2</i>	<i>2.8</i>	<i>-1.5</i>	<i>-1.0</i>	<i>-0.9</i>	<i>0.8</i>	<i>5.6</i>	<i>0.6</i>	
<i>Change on year</i>	<i>-12</i>	<i>-26</i>	<i>96</i>	<i>73</i>	<i>-103</i>	<i>-96</i>	<i>-20</i>	<i>11</i>	<i>82</i>	<i>150</i>	
<i>Change %</i>	<i>-1.0</i>	<i>-5.8</i>	<i>4.1</i>	<i>3.1</i>	<i>-5.9</i>	<i>-3.5</i>	<i>-0.5</i>	<i>1.3</i>	<i>10.4</i>	<i>0.6</i>	

Workforce jobs enquiries 01633 456776
Sources: Employer surveys, Labour Force Survey and administrative sources

1. Workforce Jobs figures are a measure of jobs rather than people. For this reason estimates of self-employment jobs and government supported trainee jobs differ from estimates of people in self-employment and in government supported training and employment programmes shown at Table 3.

2. This series is not exclusively a public sector series as it includes some private sector jobs. See table 4 for estimates of public and private sector employment.

EMPLOYMENT AND JOBS

7 Actual weekly hours worked

United Kingdom (hours worked by people aged 16 and over), seasonally adjusted

People	Average (mean) actual weekly hours worked					
	Total weekly hours (millions) ^{1,2}	All workers ¹		Full-time workers ³	Part-time workers ³	Second Jobs
	YBUS	YBUV	YBUY	YBVB	YBVE	
Aug-Oct 2009	911.8	31.6	36.9	15.4	9.4	
Aug-Oct 2010	918.8	31.6	37.1	15.7	9.7	
Nov-Jan 2011	925.4	31.8	37.4	15.7	9.6	
Feb-Apr 2011	910.9	31.2	36.7	15.5	9.6	
May-Jul 2011	914.2	31.4	36.8	15.6	9.4	
Aug-Oct 2011	918.0	31.6	37.1	15.5	9.4	
<i>Change on quarter</i>	3.8	0.2	0.3	-0.1	0.0	
<i>Change %</i>	0.4	0.6	0.8	-0.7	-0.5	
<i>Change on year</i>	-0.7	0.0	0.0	-0.2	-0.4	
<i>Change %</i>	-0.1	-0.1	0.0	-1.5	-4.0	
Men	YBUT	YBUW	YBUZ	YBVC	YBVF	
Aug-Oct 2009	558.6	36.3	38.7	15.5	10.2	
Aug-Oct 2010	565.0	36.2	39.0	15.5	11.3	
Nov-Jan 2011	571.0	36.6	39.3	15.4	11.1	
Feb-Apr 2011	560.1	35.7	38.5	15.1	10.8	
May-Jul 2011	562.5	36.0	38.8	15.1	10.2	
Aug-Oct 2011	563.7	36.2	39.0	15.0	10.3	
<i>Change on quarter</i>	1.2	0.2	0.2	-0.2	0.1	
<i>Change %</i>	0.2	0.5	0.6	-1.0	0.8	
<i>Change on year</i>	-1.3	0.0	0.1	-0.5	-1.0	
<i>Change %</i>	-0.2	0.0	0.1	-3.5	-8.7	
Women	YBUU	YBUX	YBVA	YBVD	YBVG	
Aug-Oct 2009	353.2	26.2	33.7	15.4	8.8	
Aug-Oct 2010	353.7	26.2	33.8	15.8	8.7	
Nov-Jan 2011	354.4	26.2	33.9	15.7	8.5	
Feb-Apr 2011	350.8	26.0	33.4	15.7	8.7	
May-Jul 2011	351.7	26.0	33.4	15.8	8.8	
Aug-Oct 2011	354.3	26.2	33.7	15.7	8.6	
<i>Change on quarter</i>	2.6	0.2	0.4	-0.1	-0.1	
<i>Change %</i>	0.7	0.7	1.1	-0.6	-1.5	
<i>Change on year</i>	0.6	0.0	-0.1	-0.1	0.0	
<i>Change %</i>	0.2	-0.1	-0.2	-0.9	-0.3	

Source: Labour Force Survey

Labour market statistics enquiries: labour.market@ons.gov.uk

1. Main and second job.

2. Total actual weekly hours worked including paid and unpaid overtime.

3. Main job only. The split between full-time and part-time employment is based on respondents' self-classification.

7(1) Usual weekly hours of work¹

United Kingdom, seasonally adjusted

	All in Employment (%)			Employees (%)			Self-Employed (%)		
	People	Men	Women	People	Men	Women	People	Men	Women
Aug-Oct 2010									
Less than 6 Hours	1.6	1.0	2.3	1.2	0.7	1.8	3.1	1.7	6.6
6 up to 15 hours	7.1	3.7	11.0	6.7	3.4	10.1	9.0	4.7	19.3
16 up to 30 hours	19.7	9.6	31.5	19.8	8.5	31.6	19.4	14.4	31.4
31 up to 45 hours	52.6	58.6	45.6	55.0	62.1	47.5	37.9	43.1	25.6
Over 45 hours	19.0	27.1	9.7	17.3	25.3	9.0	30.6	36.1	17.1
Total (thousands)	29,121	15,620	13,501	24,918	12,688	12,231	3,971	2,806	1,164
May-Jul 2011									
Less than 6 Hours	1.6	0.9	2.3	1.2	0.7	1.7	3.2	1.7	7.1
6 up to 15 hours	6.7	3.5	10.4	6.3	3.1	9.7	8.6	5.1	17.1
16 up to 30 hours	19.7	9.6	31.4	19.7	8.4	31.4	19.9	15.0	31.9
31 up to 45 hours	52.8	58.3	46.5	55.2	61.7	48.5	38.4	43.1	26.9
Over 45 hours	19.2	27.7	9.4	17.6	26.0	8.8	29.9	35.1	17.1
Total (thousands)	29,169	15,632	13,537	25,019	12,727	12,292	3,973	2,820	1,153
Aug-Oct 2011									
Less than 6 Hours	1.6	1.0	2.4	1.2	0.7	1.7	3.4	1.7	7.3
6 up to 15 hours	6.8	3.6	10.5	6.4	3.3	9.7	8.5	4.6	17.7
16 up to 30 hours	19.9	9.5	31.8	19.8	8.3	31.7	20.4	15.0	33.3
31 up to 45 hours	52.4	58.2	45.7	54.8	61.6	47.8	38.1	43.2	25.7
Over 45 hours	19.3	27.7	9.6	17.7	26.1	9.0	29.7	35.4	16.0
Total (thousands)	29,107	15,573	13,534	24,767	12,574	12,193	4,139	2,915	1,224

1. Total usual weekly hours worked by people aged 16 and over in main job including paid and unpaid overtime.

Source: Labour Force Survey

Labour market statistics enquiries: labour.market@ons.gov.uk

EMPLOYMENT AND JOBS

8 Employment levels¹ by country of birth and nationality

United Kingdom (thousands of people aged 16 and over) not seasonally adjusted

By country of birth	Total ²	UK	Non UK	EU14 ³	EUA8 ⁴	USA	Africa excluding South Africa	South Africa	Australia and New Zealand	India	Pakistan and Bangladesh
	MGMTM	JF6F	JF6G	JJR3	JJR5	JJR7	JJR9	JJS3	JJS5	JJS7	JJS9
Jul - Sep 2005	28,953	26,014	2,937	629	192	89	497	134	128	288	188
Jul - Sep 2006	29,174	25,911	3,258	618	305	107	528	152	136	327	206
Jul - Sep 2007	29,370	25,806	3,566	680	444	94	558	136	135	304	253
Jul - Sep 2008	29,497	25,762	3,730	662	516	78	583	160	131	347	263
Jul - Sep 2009	28,980	25,276	3,693	671	500	94	551	137	135	346	240
Oct - Dec 2009	28,975	25,236	3,732	662	478	101	543	145	142	371	247
Jan - Mar 2010	28,726	25,012	3,709	664	500	102	554	145	140	361	232
Apr - Jun 2010	28,918	25,053	3,860	692	554	105	560	148	133	399	238
Jul - Sep 2010	29,295	25,391	3,901	660	586	92	602	152	130	397	236
Oct - Dec 2010	29,194	25,278	3,911	639	619	92	590	162	118	370	249
Jan - Mar 2011	29,142	25,089	4,044	705	629	102	600	160	110	380	250
Apr - Jun 2011	29,159	25,003	4,149	718	661	88	628	151	111	398	290
Jul - Sep 2011	29,172	25,080	4,082	655	677	90	636	142	125	376	283
Change on year	-123	-311	181	-5	91	-2	34	-10	-5	-21	47
Change %	-0.4	-1.2	4.6	-0.7	15.5	-1.9	5.6	-6.5	-3.7	-5.3	20.0
By nationality	MGMTM	JF6H	JF6I	JJR4	JJR6	JJR8	JJS2	JJS4	JJS6	JJS8	JJT2
Jul - Sep 2005	28,953	27,293	1,659	496	176	68	181	73	90	121	53
Jul - Sep 2006	29,174	27,210	1,961	473	298	88	223	95	103	159	67
Jul - Sep 2007	29,370	27,203	2,157	531	431	72	229	63	110	154	75
Jul - Sep 2008	29,497	27,167	2,323	518	504	59	245	82	100	172	103
Jul - Sep 2009	28,980	26,702	2,272	537	482	72	206	77	98	148	83
Oct - Dec 2009	28,975	26,671	2,297	535	469	77	216	82	98	163	88
Jan - Mar 2010	28,726	26,459	2,262	527	490	81	213	69	95	166	81
Apr - Jun 2010	28,918	26,502	2,414	561	545	75	218	65	100	199	85
Jul - Sep 2010	29,295	26,881	2,412	538	576	70	232	67	89	190	80
Oct - Dec 2010	29,194	26,777	2,414	525	609	68	229	64	76	176	88
Jan - Mar 2011	29,142	26,636	2,501	590	614	74	216	66	63	189	81
Apr - Jun 2011	29,159	26,573	2,580	595	651	65	219	64	70	188	105
Jul - Sep 2011	29,172	26,601	2,559	547	669	72	237	55	79	163	108
Change on year	-123	-280	147	9	94	1	5	-12	-10	-27	28
Change %	-0.4	-1.0	6.1	1.6	16.3	1.7	2.0	-17.6	-11.1	-14.1	34.6

Source: Labour Force Survey

Labour market statistics enquiries: labour.market@ons.gov.uk

1. Those aged 16 and over.

2. This series is the not seasonally adjusted equivalent of the total employment series MGRZ appearing at Table 1. The series does not equal the sum of the "UK" and "Non-UK" series because the total includes people who did not state their country of birth or nationality.

3. Austria, Belgium, Denmark, Finland, France, Germany, Greece, Ireland, Italy, Luxembourg, Netherlands, Portugal, Spain and Sweden.

4. Czech Republic, Estonia, Hungary, Latvia, Lithuania, Poland, Slovak Republic, Slovenia.

8(1) Employment rates¹ by country of birth and nationality

United Kingdom not seasonally adjusted

By country of birth	Total ²	UK	Non UK	EU14 ³	EUA8 ⁴	USA	Africa excluding South Africa	South Africa	Australia and New Zealand	India	Pakistan and Bangladesh
	LF9D	LFM6	LFM7	LFM8	LFM9	LFN2	LFN3	LFN4	LFN5	LFN6	LFN7
Jul - Sep 2005	73.3	74.3	65.7	72.2	80.7	76.0	64.7	78.1	86.9	68.4	41.2
Jul - Sep 2006	73.1	73.9	67.3	75.6	81.3	73.4	63.7	83.5	83.8	67.9	45.1
Jul - Sep 2007	72.9	73.7	68.0	74.1	82.8	72.9	65.7	85.0	86.7	66.9	46.8
Jul - Sep 2008	72.7	73.5	68.1	73.8	84.0	65.7	64.2	84.9	82.5	68.9	48.1
Jul - Sep 2009	70.9	71.6	66.6	72.2	82.5	70.3	59.3	76.8	84.6	68.1	44.8
Oct - Dec 2009	70.7	71.5	66.3	71.0	83.1	73.2	60.2	76.6	85.5	68.8	45.7
Jan - Mar 2010	70.0	70.7	65.7	70.5	81.0	69.4	61.9	75.5	85.0	69.1	45.4
Apr - Jun 2010	70.3	70.9	66.5	70.4	82.7	68.7	60.9	78.9	80.9	72.8	46.6
Jul - Sep 2010	71.1	71.6	67.8	70.6	82.3	69.9	62.2	79.6	83.7	73.8	46.2
Oct - Dec 2010	70.7	71.2	67.3	71.1	82.6	67.9	62.8	80.8	87.2	71.8	48.0
Jan - Mar 2011	70.4	71.0	67.3	71.4	81.7	69.2	61.6	81.7	83.8	71.1	48.6
Apr - Jun 2011	70.4	71.0	67.2	72.9	82.1	69.4	61.2	82.9	84.1	71.4	49.4
Jul - Sep 2011	70.5	71.1	67.3	71.9	82.4	66.9	61.8	82.5	85.0	70.9	49.3
Change on year	-0.6	-0.5	-0.5	1.4	0.2	-3.0	-0.4	3.0	1.4	-2.8	3.1
By nationality	LF9D	LFN8	LFN9	LFO2	LFO3	LFO4	LFO5	LFO6	LFO7	LFO8	LFO9
Jul - Sep 2005	73.3	73.9	64.4	70.1	80.5	73.6	57.6	77.8	85.7	69.1	33.7
Jul - Sep 2006	73.1	73.4	68.6	73.4	81.5	75.1	59.5	87.7	88.0	70.0	45.6
Jul - Sep 2007	72.9	73.3	68.3	73.5	83.4	77.9	59.3	87.7	88.6	68.9	40.0
Jul - Sep 2008	72.7	73.1	68.8	72.7	84.0	68.4	59.4	87.4	84.2	71.6	46.8
Jul - Sep 2009	70.9	71.2	67.8	71.3	83.0	71.3	52.7	82.3	87.1	67.2	45.5
Oct - Dec 2009	70.7	71.1	66.8	69.4	83.8	76.8	53.8	80.6	85.2	63.4	46.8
Jan - Mar 2010	70.0	70.4	65.6	69.1	82.2	69.7	56.8	75.6	81.1	64.5	45.2
Apr - Jun 2010	70.3	70.6	66.8	69.6	83.0	66.7	56.5	77.5	80.3	69.5	48.1
Jul - Sep 2010	71.1	71.4	68.3	70.2	82.5	69.3	57.7	84.2	82.1	71.7	46.5
Oct - Dec 2010	70.7	71.0	67.9	70.6	83.1	64.2	60.2	86.4	90.8	69.0	49.2
Jan - Mar 2011	70.4	70.7	67.8	71.8	82.4	65.3	57.2	89.5	86.1	70.7	46.9
Apr - Jun 2011	70.4	70.7	67.6	72.2	82.6	67.8	55.1	89.5	89.1	71.2	50.4
Jul - Sep 2011	70.5	70.7	68.3	70.9	83.0	66.5	57.3	88.0	85.1	71.7	53.7
Change on year	-0.6	-0.6	0.0	0.7	0.5	-2.9	-0.3	3.8	3.0	0.0	7.2

Source: Labour Force Survey

Labour market statistics enquiries: labour.market@ons.gov.uk

1. People aged from 16 to 64.

2. This series is the not seasonally adjusted equivalent of the 16-64 employment rate series LF24 appearing at Table 1. It includes people who did not state their country of birth or nationality.

3. Austria, Belgium, Denmark, Finland, France, Germany, Greece, Ireland, Italy, Luxembourg, Netherlands, Portugal, Spain and Sweden.

4. Czech Republic, Estonia, Hungary, Latvia, Lithuania, Poland, Slovak Republic, Slovenia.

UNEMPLOYMENT

9(2) Unemployment by age and duration

United Kingdom (thousands), seasonally adjusted

	25-49							50 and over						
	All	Rate(%) ¹	Up to 6 months	Over 6 and up to 12 months	All over 12 months	% over 12 months	All over 24 months	All	Rate(%) ¹	Up to 6 months	Over 6 and up to 12 months	All over 12 months	% over 12 months	All over 24 months
	1	2	3	4	5	6	7	8	9	10	11	12	13	14
People	MGVI	MGXB	YBYH	YBYK	YBYN	YBYQ	YBYT	YBVT	YBVW	YBYW	YBYZ	YBZC	YBZF	YBZI
Aug-Oct 2009	1,154	6.3	574	267	313	27.1	126	382	4.6	161	102	119	31.0	59
Aug-Oct 2010	1,159	6.3	502	221	436	37.6	187	392	4.6	153	68	171	43.5	76
Nov-Jan 2011	1,153	6.3	508	199	446	38.7	196	391	4.5	148	72	170	43.6	78
Feb-Apr 2011	1,137	6.2	487	205	445	39.1	204	398	4.6	157	66	175	44.0	95
May-Jul 2011	1,157	6.3	512	199	445	38.5	218	380	4.4	156	66	158	41.7	101
Aug-Oct 2011	1,203	6.5	547	218	438	36.4	231	409	4.7	167	71	170	41.7	99
Change on quarter	46	0.2	34	18	-7	-2.1	13	28	0.3	12	5	12	0.0	-2
Change %	4.0		6.7	9.2	-1.6		5.9	7.5		7.4	7.4	7.5		-2.0
Change on year	44	0.2	45	-3	2	-1.2	44	17	0.1	15	3	0	-1.9	23
Change %	3.8		8.9	-1.4	0.5		23.5	4.3		9.5	3.9	-0.1		30.4
Men	MGVJ	MGXC	YBYI	YBYL	YBYO	YBYR	YBYU	YBVU	YBVX	YBYX	YBZA	YBZD	YBZG	YBZJ
Aug-Oct 2009	685	7.0	317	171	196	28.7	84	276	5.9	111	75	90	32.8	45
Aug-Oct 2010	653	6.6	253	116	284	43.4	133	266	5.7	95	46	125	47.2	55
Nov-Jan 2011	653	6.6	253	107	292	44.8	138	265	5.6	94	47	124	47.0	58
Feb-Apr 2011	618	6.3	231	103	284	46.0	147	264	5.6	93	45	126	47.8	70
May-Jul 2011	639	6.4	256	102	280	43.9	152	254	5.4	97	44	114	44.7	75
Aug-Oct 2011	650	6.6	274	110	266	40.9	159	269	5.7	101	46	122	45.2	71
Change on quarter	11	0.1	18	8	-14	-2.9	7	15	0.3	5	2	8	0.4	-4
Change %	1.7		6.9	7.5	-5.1		4.4	5.9		4.8	5.6	6.9		-5.6
Change on year	-3	-0.1	21	-6	-18	-2.5	25	4	0.0	7	1	-4	-2.0	16
Change %	-0.5		8.1	-5.4	-6.2		19.0	1.4		7.0	1.4	-2.9		28.6
Women	MGVK	MGXD	YBYJ	YBYM	YBYP	YBYS	YBYV	YBVV	YBVY	YBYW	YBZB	YBZE	YBZH	YBZK
Aug-Oct 2009	470	5.5	257	96	117	24.9	41	106	2.8	51	27	28	26.5	14
Aug-Oct 2010	506	6.0	249	105	152	30.1	53	126	3.3	58	23	45	36.0	21
Nov-Jan 2011	500	5.9	255	92	154	30.7	58	126	3.2	55	25	46	36.5	19
Feb-Apr 2011	519	6.1	256	102	161	31.0	57	134	3.4	64	22	49	36.5	25
May-Jul 2011	518	6.1	256	97	165	31.8	66	126	3.2	59	22	45	35.4	26
Aug-Oct 2011	553	6.5	273	108	172	31.1	72	140	3.6	66	25	49	34.9	28
Change on quarter	35	0.4	17	11	7	-0.7	6	13	0.3	7	2	4	-0.5	2
Change %	6.7		6.6	10.9	4.3		9.4	10.6		11.7	10.9	9.0		8.6
Change on year	47	0.5	24	3	20	1.0	19	13	0.3	8	2	3	-1.0	7
Change %	9.3		9.7	3.1	12.9		35.0	10.5		13.6	8.9	7.4		35.1

Relationship between columns: 1=3+4+5; 8=10+11+12.

1. Denominator = economically active for that age group.

Source: Labour Force Survey
Labour market statistics enquiries: labour.market@ons.gov.uk

CLAIMANT COUNT

10 Claimant count¹ levels and rates

United Kingdom (thousands)
seasonally adjusted

		Claimant count (all aged 18+)		Inflows: all aged 18+ (standardised)	Outflows: all aged 18+ (standardised)	Claimant count (all aged 16+) (not seasonally adjusted)	
		Level	Rate (%) ²	Level	Level	Level	Rate (%) ²
		BCJD	BCJE	DPRD	DPRE	BCJA	BCJB
People	2010						
	November	1,460.0	4.5	326.1	329.2	1,413.3	4.4
	December	1,454.6	4.5	324.6	333.7	1,425.2	4.4
	2011						
	January #	1,458.3	4.5	324.4	341.5	1,505.1	4.7
	February	1,449.8	4.5	323.9	328.3	1,538.2	4.8
	March	1,456.2	4.5	327.4	324.7	1,526.9	4.8
	April #	1,473.1	4.6	331.1	314.4	1,520.8	4.7
	May	1,495.6	4.7	309.1	291.5	1,504.9	4.7
	June	1,526.9	4.8	323.6	298.3	1,493.1	4.6
	July #	1,560.6	4.9	320.3	288.5	1,541.8	4.8
	August	1,579.7	4.9	320.7	297.7	1,576.8	4.9
	September	1,593.1	5.0	315.6	297.1	1,578.6	4.9
	October # (r)	1,595.6	5.0	307.5	300.6	1,562.5	4.9
	November (p)	1,598.6	5.0	301.7	299.9	1,558.8	4.9
	<i>Change on month</i>	3.0	0.0	-5.8	-0.7	-3.7	0.0
	<i>Change %</i>	0.2		-1.9	-0.2	-0.2	
<i>Change on year</i>	138.6	0.4	-24.4	-29.3	145.5	0.5	
<i>Change %</i>	9.5		-7.5	-8.9	10.3		
		DPAE	DPAH	GDZX	GEYR	DPAA	DPAC
Men	2010						
	November	1,022.0	5.9	218.2	227.3	986.5	5.7
	December	1,013.0	5.8	217.5	229.1	1,001.8	5.8
	2011						
	January #	1,008.3	5.8	214.1	234.6	1,050.7	6.1
	February	992.6	5.7	212.4	223.5	1,062.8	6.1
	March	991.1	5.7	216.0	219.9	1,048.7	6.0
	April #	997.9	5.7	219.0	213.1	1,034.2	6.0
	May	1,011.2	5.8	203.0	194.4	1,020.4	5.9
	June	1,029.8	5.9	213.1	198.7	1,007.5	5.8
	July #	1,049.5	6.0	210.6	190.8	1,027.2	5.9
	August	1,060.5	6.1	210.4	196.8	1,042.3	6.0
	September	1,067.8	6.1	206.1	196.3	1,041.6	6.0
	October # (r)	1,068.5	6.2	200.2	197.5	1,035.5	6.0
	November (p)	1,069.5	6.2	197.1	196.9	1,039.9	6.0
	<i>Change on month</i>	1.0	0.0	-3.1	-0.6	4.4	0.0
	<i>Change %</i>	0.1		-1.5	-0.3	0.4	
<i>Change on year</i>	47.5	0.3	-21.1	-30.4	53.4	0.3	
<i>Change %</i>	4.6		-9.7	-13.4	5.4		
		DPAF	DPAI	GEYS	GEYT	DPAB	DPAD
Women	2010						
	November	438.0	3.0	107.9	101.9	426.8	2.9
	December	441.6	3.0	107.1	104.6	423.3	2.9
	2011						
	January #	450.0	3.0	110.3	106.9	454.3	3.1
	February	457.2	3.1	111.5	104.8	475.4	3.2
	March	465.1	3.1	111.4	104.8	478.3	3.2
	April #	475.2	3.2	112.1	101.3	486.6	3.3
	May	484.4	3.3	106.1	97.1	484.5	3.3
	June	497.1	3.4	110.5	99.6	485.5	3.3
	July #	511.1	3.5	109.7	97.7	514.6	3.5
	August	519.2	3.5	110.3	100.9	534.5	3.6
	September	525.3	3.6	109.5	100.8	537.1	3.6
	October # (r)	527.1	3.6	107.3	103.1	527.0	3.6
	November (p)	529.1	3.6	104.6	103.0	518.9	3.5
	<i>Change on month</i>	2.0	0.0	-2.7	-0.1	-8.1	-0.1
	<i>Change %</i>	0.4		-2.5	-0.1	-1.5	
<i>Change on year</i>	91.1	0.6	-3.3	1.1	92.1	0.6	
<i>Change %</i>	20.8		-3.1	1.1	21.6		

1. The claimant count measures the number of people claiming Jobseeker's Allowance.

Source: Jobcentre Plus administrative system

The level measures the number of claimants on the second Thursday of each month (the "count date").

The flows figures are collected for 4 or 5 week periods between count dates; the figures are then standardised to a 4 1/3 week month. The levels and flows are independently seasonally adjusted. For these reasons, movements in the flows do not tally exactly with movements in the levels.

2. Denominator = Claimant count + Workforce jobs.

More detailed estimates are available from Nomis® at:

<http://www.nomisweb.co.uk>

Months where there are 5 weeks between count dates; the rest are 4 week periods.

Labour market statistics enquiries: labour.market@ons.gov.uk

CLAIMANT COUNT

10(1) Lone Parent¹ Claimants of Jobseeker's Allowance by Age of Youngest Child² (Experimental Statistics)

Great Britain
not seasonally adjusted

	Claimant Count (all aged 16+) ⁴	Experimental Statistics ³				
		Lone Parents on Claimant Count ⁵	Age of Youngest Child			
			Age 0-6 JDA2	Age 7-9 JDA3	Age 10-11 JDA4	Age 12-15 JDA5
People 2010	BCJG	JD9Z				
October #	1,359,300	76,755	6,840	2,570	26,800	40,545
November	1,356,400	80,680	6,860	7,275	26,675	39,865
December	1,368,300	85,320	6,770	12,835	26,305	39,415
2011						
January #	1,445,400	97,050	6,905	22,765	27,460	39,920
February	1,477,700	106,255	6,980	32,015	27,620	39,645
March	1,467,000	112,600	7,230	39,055	27,340	38,975
April #	1,461,600	118,195	7,360	44,875	27,200	38,760
May	1,446,300	118,655	7,380	46,270	26,900	38,100
June	1,434,400	118,775	7,360	47,320	26,615	37,480
July #	1,481,200	121,950	7,655	49,605	26,775	37,915
August	1,515,000	123,805	7,905	50,715	26,655	38,530
September	1,517,200	121,695	7,860	50,190	25,865	37,785
October #	1,502,500	122,660	8,260	50,945	25,585	37,865
<i>Change on month</i>		965	400	755	-280	80
<i>Change %</i>		0.8	5.1	1.5	-1.1	0.2
<i>Change on year</i>		45,905	1,420	48,375	-1,215	-2,680
<i>Change %</i>		59.8	20.8	1,882.3	-4.5	-6.6

Source: Jobcentre Plus administrative system and HM Revenue & Customs child benefit data
Labour market statistics enquiries: labour.market@ons.gov.uk

1. Lone Parents are defined as those claiming Child Benefit for at least one child aged under 16 at the Jobseeker's Allowance (JSA) count date (second Thursday of the month) who have their marital status recorded as single, widowed, divorced or separated.
2. Age of youngest child relates to the age of the youngest child at the JSA count date.
3. These figures are experimental statistics and may be subject to retrospective changes as and when the Department for Work and Pensions (DWP) receive updated Child Benefit data.
4. The number of people claiming JSA in Great Britain. These figures are different from the figures at table 10 (series BCJA) which relate to the UK. Series BCJA (shown at Table 10) and BCJG (shown above) also include clerical claims which are not used in producing the subsequent lone parent series and are therefore slightly different to JSA figures published by the DWP on similar tables in their publications. Therefore, there may be some lone parents included in the GB total but not included in the subsequent breakdowns.
5. Some JSA claimants have their marital status coded as "not known". Such claimants who are claiming Child Benefit for at least one child aged under 16 may be lone parents but are not recorded as such in the above table.

The estimates for Lone Parent claimants shown in the above table are produced a month later than the Claimant Count estimates shown at table 10.

From 24 November 2008 most lone parents with older children are no longer entitled to Income Support if they are only claiming it because they are a lone parent. Instead those able to work may be entitled to claim Jobseeker's Allowance. This change has been introduced for most lone parents with (i) a youngest child aged 12 or over from 24 November 2008, (ii) a youngest child aged 10 or over from 26 October 2009, (iii) a youngest child aged 7 or over from 25 October 2010.

Further estimates of lone parents claiming JSA are available from DWP at <http://statistics.dwp.gov.uk/asd/>

Months where there are 5 weeks between count dates. All the rest are 4 week periods.

CLAIMANT COUNT

11(1) Claimant count¹ by age and duration²

United Kingdom (thousands), seasonally adjusted

	All aged 18 and over							18-24					
	All claimants aged 18+	Computerised claims: All aged 18+ ²	Up to 6 months	Over 6 and up to 12 months	All over 12 months	Percentage claiming over 12 months	All over 24 months	All computerised claims ²	Up to 6 months	Over 6 and up to 12 months	All over 12 months	Percentage claiming over 12 months	All over 24 months
	1	2	3	4	5	6	7	8	9	10	11	12	13
People	BCJD	AGLX	AGLZ	AGMC	AGMD	AGMY	AGMZ	AGNA	AGNB	AGNC	AGND	AGNE	AGNF
2010													
November	1,460.0	1,454.9	959.6	249.9	245.4	16.9	55.6	414.7	341.9	50.7	22.1	5.3	3.0
December	1,454.6	1,449.3	963.2	248.2	237.9	16.4	56.0	410.3	338.8	50.3	21.2	5.2	3.4
2011													
January #	1,458.3	1,452.6	966.3	255.1	231.2	15.9	57.0	415.1	342.0	53.0	20.1	4.8	3.9
February	1,449.8	1,444.4	959.4	259.1	225.9	15.6	57.0	412.1	338.5	54.4	19.2	4.7	4.2
March	1,456.2	1,451.3	966.0	264.0	221.3	15.2	57.1	415.1	339.6	57.7	17.8	4.3	4.3
April #	1,473.1	1,468.4	980.2	270.8	217.4	14.8	57.9	423.2	345.0	61.4	16.8	4.0	4.6
May	1,495.6	1,491.0	993.4	281.0	216.6	14.5	59.0	430.3	349.2	64.6	16.5	3.8	4.8
June	1,526.9	1,522.6	1,008.5	294.5	219.6	14.4	60.8	441.1	355.5	68.8	16.8	3.8	4.9
July #	1,560.6	1,556.3	1,008.0	319.4	228.9	14.7	62.9	459.1	358.3	82.0	18.8	4.1	5.1
August	1,579.7	1,575.5	1,004.8	332.8	237.9	15.1	65.4	467.8	359.0	87.6	21.2	4.5	5.3
September	1,593.1	1,588.9	989.5	350.8	248.6	15.6	67.8	474.9	355.5	94.5	24.9	5.2	5.2
October # (r)	1,595.6	1,592.3	960.8	369.0	262.5	16.5	71.1	479.7	346.7	103.0	30.0	6.3	5.2
November (p)	1,598.6	1,595.2	946.8	373.1	275.3	17.3	73.9	484.0	342.8	107.8	33.4	6.9	5.1
Change on month	3.0	2.9	-14.0	4.1	12.8	0.8	2.8	4.3	-3.9	4.8	3.4	0.6	-0.1
Change %	0.2	0.2	-1.5	1.1	4.9		3.9	0.9	-1.1	4.7	11.3		-1.9
Change on year	138.6	140.3	-12.8	123.2	29.9	0.4	18.3	69.3	0.9	57.1	11.3	1.6	2.1
Change %	9.5	9.6	-1.3	49.3	12.2		32.9	16.7	0.3	112.6	51.1		70.0
Men	DPAE	AGNG	AGXK	ELNP	ELON	GBHG	IKBS	JLGC	JLGD	JLGE	JLGF	JLGG	JLGH
2010													
November	1,022.0	1,018.4	653.5	177.6	187.3	18.4	45.0	282.1	230.4	35.5	16.2	5.7	2.1
December	1,013.0	1,009.3	652.7	176.1	180.5	17.9	45.4	278.2	227.6	35.1	15.5	5.6	2.4
2011													
January #	1,008.3	1,004.1	649.7	179.5	174.9	17.4	46.1	281.5	229.8	36.9	14.8	5.3	2.8
February	992.6	988.9	637.4	181.5	170.0	17.2	46.1	277.5	225.6	37.7	14.2	5.1	3.0
March	991.1	987.5	637.4	184.8	165.3	16.7	45.9	278.6	225.6	39.8	13.2	4.7	3.1
April #	997.9	994.5	643.6	189.4	161.5	16.2	46.3	283.8	229.4	42.1	12.3	4.3	3.3
May	1,011.2	1,008.1	653.0	194.5	160.6	15.9	47.0	288.6	232.5	44.1	12.0	4.2	3.5
June	1,029.8	1,026.8	662.8	201.7	162.3	15.8	48.3	295.6	236.8	46.7	12.1	4.1	3.6
July #	1,049.5	1,046.7	662.4	216.3	168.0	16.1	49.9	307.9	238.5	55.9	13.5	4.4	3.8
August	1,060.5	1,057.7	661.2	222.5	174.0	16.5	51.4	313.0	238.3	59.7	15.0	4.8	3.9
September	1,067.8	1,065.0	650.4	233.1	181.5	17.0	53.1	317.9	235.8	64.4	17.7	5.6	3.9
October # (r)	1,068.5	1,066.4	630.2	244.8	191.4	17.9	55.3	321.5	230.0	70.2	21.3	6.6	3.9
November (p)	1,069.5	1,067.3	620.2	247.5	199.6	18.7	57.2	324.6	227.1	73.6	23.9	7.4	3.8
Change on month	1.0	0.9	-10.0	2.7	8.2	0.8	1.9	3.1	-2.9	3.4	2.6	0.7	-0.1
Change %	0.1	0.1	-1.6	1.1	4.3		3.4	1.0	-1.3	4.8	12.2		-2.6
Change on year	47.5	48.9	-33.3	69.9	12.3	0.3	12.2	42.5	-3.3	38.1	7.7	1.6	1.7
Change %	4.6	4.8	-5.1	39.4	6.6		27.1	15.1	-1.4	107.3	47.5		81.0
Women	DPAF	JLGI	JLGK	JLGJ	JLGL	JLGM	JLGN	JLGO	JLGP	JLQQ	JLGR	JLGS	JLGT
2010													
November	438.0	436.5	306.1	72.3	58.1	13.3	10.6	132.6	111.5	15.2	5.9	4.4	0.9
December	441.6	440.0	310.5	72.1	57.4	13.0	10.6	132.1	111.2	15.2	5.7	4.3	1.0
2011													
January #	450.0	448.5	316.6	75.6	56.3	12.6	10.9	133.6	112.2	16.1	5.3	4.0	1.1
February	457.2	455.5	322.0	77.6	55.9	12.3	10.9	134.6	112.9	16.7	5.0	3.7	1.2
March	465.1	463.8	328.6	79.2	56.0	12.1	11.2	136.5	114.0	17.9	4.6	3.4	1.2
April #	475.2	473.9	336.6	81.4	55.9	11.8	11.6	139.4	115.6	19.3	4.5	3.2	1.3
May	484.4	482.9	340.4	86.5	56.0	11.6	12.0	141.7	116.7	20.5	4.5	3.2	1.3
June	497.1	495.8	345.7	92.8	57.3	11.6	12.5	145.5	118.7	22.1	4.7	3.2	1.3
July #	511.1	509.6	345.6	103.1	60.9	12.0	13.0	151.2	119.8	26.1	5.3	3.5	1.3
August	519.2	517.8	343.6	110.3	63.9	12.3	14.0	154.8	120.7	27.9	6.2	4.0	1.4
September	525.3	523.9	339.1	117.7	67.1	12.8	14.7	157.0	119.7	30.1	7.2	4.6	1.3
October # (r)	527.1	525.9	330.6	124.2	71.1	13.5	15.8	158.2	116.7	32.8	8.7	5.5	1.3
November (p)	529.1	527.9	326.6	125.6	75.7	14.3	16.7	159.4	115.7	34.2	9.5	6.0	1.3
Change on month	2.0	2.0	-4.0	1.4	4.6	0.8	0.9	1.2	-1.0	1.4	0.8	0.5	0.0
Change %	0.4	0.4	-1.2	1.1	6.5		5.7	0.8	-0.9	4.3	9.2		0.0
Change on year	91.1	91.4	20.5	53.3	17.6	1.0	6.1	26.8	4.2	19.0	3.6	1.5	0.4
Change %	20.8	20.9	6.7	73.7	30.3		57.5	20.2	3.8	125.0	61.0		44.4

Relationship between columns: 2= 3+4+5; 6= 5/2; 8= 9+10+11; 12= 11/8.

Source: Jobcentre Plus administrative system

1. The number of people claiming Jobseeker's Allowance.

Labour market statistics enquiries: labour.market@ons.gov.uk

2. Only computerised claims are analysed by age and duration on a monthly basis. The figures in column 2 onwards therefore differ from the figures in column 1 and in table 10. The differences reflect numbers of clerically processed claims, which currently amount to less than 1 per cent of the total claimant count, and minor effects of rounding.

Months where there are 5 weeks between count dates. All the rest are 4 week periods.

CLAIMANT COUNT

11(2) Claimant count¹ by age and duration²

United Kingdom (thousands), seasonally adjusted

People	25-49						50 and over					
	All computerised claims ²	Up to 6 months	Over 6 and up to 12 months	All over 12 months	Percentage claiming over 12 months	All over 24 months	All computerised claims ²	Up to 6 months	Over 6 and up to 12 months	All over 12 months	Percentage claiming over 12 months	All over 24 months
	14	15	16	17	18	19	20	21	22	23	24	25
	JLGU	JLGV	JLGW	JLGX	JLGY	JLGZ	JLHA	JLHB	JLHC	JLHD	JLHE	JLHF
2010												
November	816.4	490.2	157.9	168.3	20.6	37.3	223.8	127.5	41.3	55.0	24.6	15.3
December	815.3	495.6	156.5	163.2	20.0	37.4	223.7	128.8	41.4	53.5	23.9	15.2
2011												
January #	816.0	497.4	159.8	158.8	19.5	37.6	221.5	126.9	42.3	52.3	23.6	15.5
February	812.2	495.1	161.6	155.5	19.1	37.5	220.1	125.8	43.1	51.2	23.3	15.3
March	815.7	499.7	162.8	153.2	18.8	37.6	220.5	126.7	43.5	50.3	22.8	15.2
April #	822.7	506.6	164.9	151.2	18.4	38.0	222.5	128.6	44.5	49.4	22.2	15.3
May	834.6	513.7	170.2	150.7	18.1	38.6	226.1	130.5	46.2	49.4	21.8	15.6
June	850.5	520.0	177.8	152.7	18.0	39.9	231.0	133.0	47.9	50.1	21.7	16.0
July #	862.2	515.7	188.3	158.2	18.3	41.3	235.0	134.0	49.1	51.9	22.1	16.5
August	868.9	511.3	194.8	162.8	18.7	42.9	238.8	134.5	50.4	53.9	22.6	17.2
September	873.4	501.8	203.7	167.9	19.2	44.7	240.6	132.2	52.6	55.8	23.2	17.9
October # (r)	871.9	486.6	211.3	174.0	20.0	46.8	240.7	127.5	54.7	58.5	24.3	19.1
November (p)	870.7	479.0	210.7	181.0	20.8	48.9	240.5	125.0	54.6	60.9	25.3	19.9
<i>Change on month</i>	-1.2	-7.6	-0.6	7.0	0.8	2.1	-0.2	-2.5	-0.1	2.4	1.0	0.8
<i>Change %</i>	-0.1	-1.6	-0.3	4.0		4.5	-0.1	-2.0	-0.2	4.1		4.2
<i>Change on year</i>	54.3	-11.2	52.8	12.7	0.2	11.6	16.7	-2.5	13.3	5.9	0.7	4.6
<i>Change %</i>	6.7	-2.3	33.4	7.5		31.1	7.5	-2.0	32.2	10.7		30.1
Men	AGMA	JLHG	JLHH	JLHI	JLHJ	JLHK	JLHL	JLHM	JLHN	JLHO	JLHP	JLHQ
2010												
November	581.9	337.6	113.7	130.6	22.4	31.0	154.4	85.5	28.4	40.5	26.2	11.9
December	577.0	338.7	112.5	125.8	21.8	31.1	154.1	86.4	28.5	39.2	25.4	11.9
2011												
January #	570.8	335.3	113.5	122.0	21.4	31.2	151.8	84.6	29.1	38.1	25.1	12.1
February	561.6	328.7	114.3	118.6	21.1	31.1	149.8	83.1	29.5	37.2	24.8	12.0
March	559.7	328.7	115.2	115.8	20.7	31.0	149.2	83.1	29.8	36.3	24.3	11.8
April #	560.9	330.5	116.7	113.7	20.3	31.2	149.8	83.7	30.6	35.5	23.7	11.8
May	567.8	336.0	118.8	113.0	19.9	31.5	151.7	84.5	31.6	35.6	23.5	12.0
June	576.9	340.4	122.4	114.1	19.8	32.5	154.3	85.6	32.6	36.1	23.4	12.2
July #	582.6	338.2	127.1	117.3	20.1	33.5	156.2	85.7	33.3	37.2	23.8	12.6
August	586.3	337.0	128.9	120.4	20.5	34.5	158.4	85.9	33.9	38.6	24.4	13.0
September	587.7	330.5	133.3	123.9	21.1	35.7	159.4	84.1	35.4	39.9	25.0	13.5
October # (r)	585.5	319.3	137.9	128.3	21.9	37.1	159.4	80.9	36.7	41.8	26.2	14.3
November (p)	583.4	313.8	137.3	132.3	22.7	38.5	159.3	79.3	36.6	43.4	27.2	14.9
<i>Change on month</i>	-2.1	-5.5	-0.6	4.0	0.8	1.4	-0.1	-1.6	-0.1	1.6	1.0	0.6
<i>Change %</i>	-0.4	-1.7	-0.4	3.1		3.8	-0.1	-2.0	-0.3	3.8		4.2
<i>Change on year</i>	1.5	-23.8	23.6	1.7	0.2	7.5	4.9	-6.2	8.2	2.9	1.0	3.0
<i>Change %</i>	0.3	-7.0	20.8	1.3		24.2	3.2	-7.3	28.9	7.2		25.2
Women	JLHR	JLHS	JLHT	JLHU	JLHV	JLHW	JLHX	JLHY	JLHZ	JLIA	JLIB	JLIC
2010												
November	234.5	152.6	44.2	37.7	16.1	6.3	69.4	42.0	12.9	14.5	20.9	3.4
December	238.3	156.9	44.0	37.4	15.7	6.3	69.6	42.4	12.9	14.3	20.5	3.3
2011												
January #	245.2	162.1	46.3	36.8	15.0	6.4	69.7	42.3	13.2	14.2	20.4	3.4
February	250.6	166.4	47.3	36.9	14.7	6.4	70.3	42.7	13.6	14.0	19.9	3.3
March	256.0	171.0	47.6	37.4	14.6	6.6	71.3	43.6	13.7	14.0	19.6	3.4
April #	261.8	176.1	48.2	37.5	14.3	6.8	72.7	44.9	13.9	13.9	19.1	3.5
May	266.8	177.7	51.4	37.7	14.1	7.1	74.4	46.0	14.6	13.8	18.5	3.6
June	273.6	179.6	55.4	38.6	14.1	7.4	76.7	47.4	15.3	14.0	18.3	3.8
July #	279.6	177.5	61.2	40.9	14.6	7.8	78.8	48.3	15.8	14.7	18.7	3.9
August	282.6	174.3	65.9	42.4	15.0	8.4	80.4	48.6	16.5	15.3	19.0	4.2
September	285.7	171.3	70.4	44.0	15.4	9.0	81.2	48.1	17.2	15.9	19.6	4.4
October # (r)	286.4	167.3	73.4	45.7	16.0	9.7	81.3	46.6	18.0	16.7	20.5	4.8
November (p)	287.3	165.2	73.4	48.7	17.0	10.4	81.2	45.7	18.0	17.5	21.6	5.0
<i>Change on month</i>	0.9	-2.1	0.0	3.0	1.0	0.7	-0.1	-0.9	0.0	0.8	1.0	0.2
<i>Change %</i>	0.3	-1.3	0.0	6.6		7.2	-0.1	-1.9	0.0	4.8		4.2
<i>Change on year</i>	52.8	12.6	29.2	11.0	0.9	4.1	11.8	3.7	5.1	3.0	0.7	1.6
<i>Change %</i>	22.5	8.3	66.1	29.2		65.1	17.0	8.8	39.5	20.7		47.1

Relationship between columns: 14 = 15+16+17; 18 = 17/14; 20 = 21+22+23; 24 = 23/20.

Source: Jobcentre Plus administrative system

1. The number of people claiming Jobseeker's Allowance.

Labour market statistics enquiries: labour.market@ons.gov.uk

2. Only computerised claims are analysed by age and duration on a monthly basis. The figures in column 2 onwards therefore differ from the figures in column 1 and in table 10. The differences reflect numbers of clerically processed claims, which currently amount to less than 1 per cent of the total claimant count, and minor effects of rounding.

Months where there are 5 weeks between count dates. All the rest are 4 week periods.

ECONOMIC ACTIVITY AND INACTIVITY

12 Economic activity by age

United Kingdom (thousands), seasonally adjusted

	All aged 16 & over	16 - 64	16 - 17	18 - 24	25 - 34	35 - 49	50 - 64	65+
	1	2	3	4	5	6	7	8
Economically active levels								
People	MGSF	LF2K	YBZL	YBZO	YBZR	YBZU	LF3A	LFK8
Aug-Oct 2009	31,372	30,586	605	4,093	6,754	11,539	7,594	786
Aug-Oct 2010	31,620	30,757	578	4,157	6,924	11,413	7,684	863
Nov-Jan 2011	31,677	30,759	569	4,141	6,979	11,367	7,703	918
Feb-Apr 2011	31,669	30,764	564	4,078	7,034	11,339	7,749	905
May-Jul 2011	31,679	30,796	551	4,114	7,074	11,325	7,733	883
Aug-Oct 2011	31,745	30,856	540	4,118	7,092	11,323	7,783	889
Change on quarter	65	60	-11	4	18	-1	50	6
Change %	0.2	0.2	-2.0	0.1	0.3	0.0	0.6	0.7
Change on year	125	99	-39	-39	168	-89	99	26
Change %	0.4	0.3	-6.7	-0.9	2.4	-0.8	1.3	3.0
Men	MGSG	YBSL	YBZM	YBZP	YBZS	YBZV	YBZY	YCAE
Aug-Oct 2009	16,939	16,465	288	2,196	3,733	6,076	4,172	474
Aug-Oct 2010	17,078	16,557	273	2,241	3,839	6,029	4,175	521
Nov-Jan 2011	17,110	16,566	281	2,223	3,853	6,014	4,195	544
Feb-Apr 2011	17,115	16,569	267	2,215	3,862	6,020	4,205	546
May-Jul 2011	17,084	16,549	256	2,207	3,886	6,022	4,178	535
Aug-Oct 2011	17,108	16,562	262	2,192	3,908	6,000	4,201	546
Change on quarter	24	14	5	-15	23	-22	23	11
Change %	0.1	0.1	2.1	-0.7	0.6	-0.4	0.6	2.0
Change on year	30	5	-12	-50	69	-29	26	25
Change %	0.2	0.0	-4.2	-2.2	1.8	-0.5	0.6	4.8
Women	MGSH	LF2L	YBZN	YBZQ	YBZT	YBZW	LF3B	LFK9
Aug-Oct 2009	14,433	14,120	318	1,897	3,021	5,462	3,422	313
Aug-Oct 2010	14,542	14,199	305	1,916	3,085	5,384	3,509	342
Nov-Jan 2011	14,567	14,193	287	1,918	3,125	5,354	3,508	374
Feb-Apr 2011	14,553	14,195	297	1,863	3,172	5,319	3,544	359
May-Jul 2011	14,596	14,248	294	1,908	3,188	5,303	3,555	348
Aug-Oct 2011	14,637	14,294	278	1,927	3,184	5,324	3,582	343
Change on quarter	41	46	-16	19	-4	21	26	-5
Change %	0.3	0.3	-5.6	1.0	-0.1	0.4	0.7	-1.4
Change on year	95	95	-27	11	99	-60	72	1
Change %	0.7	0.7	-8.9	0.6	3.2	-1.1	2.1	0.2
Economic activity rates (%)¹								
People	MGWG	LF22	YCAC	YCAJ	YCAM	YCAP	LF2C	LFL2
Aug-Oct 2009	63.3	76.8	39.2	70.7	84.8	86.2	68.0	8.1
Aug-Oct 2010	63.4	76.8	38.4	71.3	84.9	85.9	68.2	8.7
Nov-Jan 2011	63.4	76.7	37.9	71.0	85.1	85.7	68.2	9.3
Feb-Apr 2011	63.2	76.7	37.8	69.9	85.2	85.7	68.4	9.1
May-Jul 2011	63.1	76.7	37.1	70.5	85.2	85.8	68.1	8.8
Aug-Oct 2011	63.1	76.8	36.5	70.7	84.9	86.0	68.5	8.8
Change on quarter	0.0	0.1	-0.6	0.1	-0.3	0.2	0.4	0.0
Change on year	-0.2	0.0	-1.9	-0.6	0.0	0.2	0.3	0.1
Men	MGWH	MGSP	YCAH	YCAK	YCAN	YCAQ	MGWQ	MGWT
Aug-Oct 2009	70.1	83.1	36.4	74.7	93.0	92.1	76.1	11.0
Aug-Oct 2010	70.1	83.1	35.5	75.7	93.2	91.9	75.6	11.8
Nov-Jan 2011	70.1	83.0	36.7	75.0	93.0	91.8	75.8	12.2
Feb-Apr 2011	70.0	82.9	35.0	74.7	92.7	92.1	75.8	12.2
May-Jul 2011	69.7	82.7	33.7	74.5	92.6	92.3	75.1	11.9
Aug-Oct 2011	69.6	82.8	34.6	74.0	92.5	92.2	75.5	12.0
Change on quarter	0.0	0.0	0.8	-0.4	-0.1	-0.1	0.4	0.1
Change on year	-0.5	-0.3	-0.9	-1.6	-0.7	0.4	-0.1	0.2
Women	MGWI	LF23	YCAI	YCAL	YCAO	YCAR	LF2D	LFL3
Aug-Oct 2009	56.9	70.6	42.2	66.6	76.5	80.6	60.2	5.8
Aug-Oct 2010	56.9	70.6	41.5	66.8	76.4	80.0	61.2	6.3
Nov-Jan 2011	56.9	70.5	39.2	66.9	77.0	79.7	61.0	6.9
Feb-Apr 2011	56.8	70.4	40.8	64.9	77.7	79.4	61.4	6.5
May-Jul 2011	56.9	70.6	40.6	66.5	77.6	79.4	61.4	6.3
Aug-Oct 2011	56.9	70.9	38.5	67.2	77.1	79.9	61.9	6.2
Change on quarter	0.1	0.2	-2.1	0.7	-0.6	0.6	0.4	-0.1
Change on year	0.0	0.3	-3.0	0.4	0.7	-0.1	0.7	-0.1

Relationship between columns: 1= 2+8; 2=3+4+5+6+7.

1. Denominator = all persons in the relevant age group.

Source: Labour Force Survey
Labour market statistics enquiries: labour.market@ons.gov.uk

ECONOMIC ACTIVITY AND INACTIVITY

13 Economic inactivity: reasons

United Kingdom (thousands), seasonally adjusted

	Economic inactivity by reason (aged 16 to 64)							Wanting/not wanting a job (aged 16 to 64)		
	Student	Looking after family / home	Temporary sick	Long-term sick	Discouraged	Retired	Other	Does not want a job	Wants a job ¹	
People	1	2	3	4	5	6	7	8	9	10
	LF2M	LF63	LF65	LF67	LF69	LFL8	LF6B	LF6D	LFL9	LFM2
Aug-Oct 2009	9,248	2,221	2,313	181	2,150	82	1,533	767	6,913	2,336
Aug-Oct 2010	9,288	2,222	2,259	176	2,200	67	1,534	830	6,923	2,365
Nov-Jan 2011	9,329	2,210	2,292	165	2,183	78	1,562	839	6,969	2,360
Feb-Apr 2011	9,368	2,290	2,303	171	2,164	84	1,543	813	7,049	2,319
May-Jul 2011	9,380	2,244	2,349	166	2,161	78	1,575	807	7,032	2,348
Aug-Oct 2011	9,325	2,297	2,306	175	2,159	70	1,565	754	7,103	2,223
Change on quarter	-54	53	-43	9	-2	-8	-10	-53	71	-125
Change %	-0.6	2.4	-1.8	5.5	-0.1	-10.8	-0.6	-6.6	1.0	-5.3
Change on year	37	75	47	-1	-41	3	31	-77	180	-142
Change %	0.4	3.4	2.1	-0.5	-1.9	3.9	2.0	-9.2	2.6	-6.0
Men	YBSO	BEEEX	BEAQ	BEDI	BEDL	YCFP	BEDR	BEDU	YBWA	YBWD
Aug-Oct 2009	3,359	1,133	213	91	1,109	45	444	323	2,363	996
Aug-Oct 2010	3,377	1,110	197	78	1,138	34	469	350	2,345	1,032
Nov-Jan 2011	3,391	1,092	197	70	1,160	48	468	357	2,387	1,004
Feb-Apr 2011	3,412	1,143	198	79	1,142	48	460	342	2,425	987
May-Jul 2011	3,457	1,157	205	75	1,155	45	485	334	2,456	1,001
Aug-Oct 2011	3,448	1,195	209	80	1,113	41	494	316	2,519	929
Change on quarter	-9	38	3	5	-43	-5	9	-18	63	-72
Change %	-0.3	3.3	1.7	7.2	-3.7	-10.3	1.9	-5.4	2.6	-7.2
Change on year	71	84	12	2	-25	7	25	-34	174	-103
Change %	2.1	7.6	5.9	2.8	-2.2	19.1	5.3	-9.6	7.4	-10.0
Women	LF2N	LF64	LF66	LF68	LF6A	LFM3	LF6C	LF6E	LFM4	LFM5
Aug-Oct 2009	5,890	1,088	2,100	90	1,041	37	1,090	444	4,550	1,340
Aug-Oct 2010	5,912	1,111	2,062	97	1,062	33	1,065	480	4,578	1,333
Nov-Jan 2011	5,938	1,118	2,096	96	1,023	30	1,094	482	4,581	1,356
Feb-Apr 2011	5,956	1,147	2,105	92	1,021	37	1,083	471	4,624	1,332
May-Jul 2011	5,923	1,087	2,144	91	1,006	33	1,090	473	4,576	1,347
Aug-Oct 2011	5,878	1,102	2,098	94	1,047	29	1,070	437	4,584	1,294
Change on quarter	-45	15	-46	4	41	-4	-19	-35	8	-53
Change %	-0.8	1.4	-2.2	4.1	4.1	-11.4	-1.8	-7.4	0.2	-3.9
Change on year	-34	-9	35	-3	-16	-4	6	-43	5	-39
Change %	-0.6	-0.8	1.7	-3.1	-1.5	-11.8	0.5	-8.9	0.1	-2.9
Percentage of economically inactive aged from 16 to 64 (%)										
People	LF6V	LF6X	LF6Z	LF73	LF75	LF77	LF79	LF7B	LF7D	LF7F
Aug-Oct 2009	100	24.0	25.0	2.0	23.2	0.9	16.6	8.3	74.7	25.3
Aug-Oct 2010	100	23.9	24.3	1.9	23.7	0.7	16.5	8.9	74.5	25.5
Nov-Jan 2011	100	23.7	24.6	1.8	23.4	0.8	16.7	9.0	74.7	25.3
Feb-Apr 2011	100	24.4	24.6	1.8	23.1	0.9	16.5	8.7	75.2	24.8
May-Jul 2011	100	23.9	25.0	1.8	23.0	0.8	16.8	8.6	75.0	25.0
Aug-Oct 2011	100	24.6	24.7	1.9	23.2	0.7	16.8	8.1	76.2	23.8
Men	BEBP	BEEH	BEEK	BEEN	BEEQ	BEET	BEEW	BEEZ	BEAS	BEGT
Aug-Oct 2009	100	33.7	6.3	2.7	33.0	1.4	13.2	9.6	70.4	29.6
Aug-Oct 2010	100	32.9	5.8	2.3	33.7	1.0	13.9	10.4	69.4	30.6
Nov-Jan 2011	100	32.2	5.8	2.1	34.2	1.4	13.8	10.5	70.4	29.6
Feb-Apr 2011	100	33.5	5.8	2.3	33.5	1.4	13.5	10.0	71.1	28.9
May-Jul 2011	100	33.5	5.9	2.2	33.4	1.3	14.0	9.7	71.0	29.0
Aug-Oct 2011	100	34.7	6.1	2.3	32.3	1.2	14.3	9.2	73.1	26.9
Women	LF6W	LF6Y	LF72	LF74	LF76	LF78	LF7A	LF7C	LF7E	LF7G
Aug-Oct 2009	100	18.5	35.7	1.5	17.7	0.6	18.5	7.5	77.2	22.8
Aug-Oct 2010	100	18.8	34.9	1.6	18.0	0.6	18.0	8.1	77.4	22.6
Nov-Jan 2011	100	18.8	35.3	1.6	17.2	0.5	18.4	8.1	77.2	22.8
Feb-Apr 2011	100	19.3	35.3	1.5	17.1	0.6	18.2	7.9	77.6	22.4
May-Jul 2011	100	18.4	36.2	1.5	17.0	0.6	18.4	8.0	77.3	22.7
Aug-Oct 2011	100	18.7	35.7	1.6	17.8	0.5	18.2	7.4	78.0	22.0

Relationship between columns : 1=2+3+4+5+6+7+8; 1=9+10.

Source: Labour Force Survey
Labour market statistics enquiries: labour.market@ons.gov.uk

1. This series comprises those who say they would like a regular paid job, but who do not meet the internationally agreed definition of unemployment because they have not been looking for work in the last four weeks and/or they were unable to start working within two weeks.

ECONOMIC ACTIVITY AND INACTIVITY

14 Educational status, economic activity and inactivity of people aged from 16 to 24

August to October 2011

United Kingdom (thousands) seasonally adjusted

	All aged 16 to 24				In full-time education (FTE)				Not in full-time education (FTE) ¹			
	Total	Employed	Unemployed	Economically inactive	Total	Employed ²	Unemployed ²	Economically inactive	Total	Employed	Unemployed	Economically inactive
	1	2	3	4	5	6	7	8	9	10	11	12

Levels

People													
16-17	1,480	329	211	940	1,225	240	151	834	255	89	60	106	
18-24	5,828	3,303	815	1,710	1,841	588	145	1,108	3,987	2,715	670	602	
16-24	7,308	3,631	1,027	2,650	3,066	828	297	1,942	4,242	2,804	730	708	
Men													
16-17	757	147	115	496	605	94	77	434	152	52	39	61	
18-24	2,961	1,691	500	769	910	244	83	582	2,051	1,447	417	187	
16-24	3,718	1,838	615	1,265	1,515	338	160	1,017	2,203	1,499	456	248	
Women													
16-17	722	182	96	444	620	146	75	400	102	36	21	44	
18-24	2,867	1,611	315	940	930	344	62	525	1,936	1,268	253	415	
16-24	3,589	1,793	411	1,385	1,551	489	137	925	2,039	1,304	274	460	

Changes on quarter

People													
16-17	-5	-19	8	6	-5	-16	19	-8	0	-3	-11	14	
18-24	-5	-42	46	-9	66	9	14	43	-70	-51	32	-52	
16-24	-10	-61	54	-3	61	-7	33	35	-71	-54	21	-38	
Men													
16-17	-3	-4	9	-8	-6	-9	18	-16	3	5	-9	8	
18-24	-3	-63	48	12	33	0	14	19	-36	-63	34	-7	
16-24	-6	-67	57	4	27	-9	33	4	-33	-58	24	0	
Women													
16-17	-2	-15	-1	14	1	-7	0	8	-3	-8	-1	6	
18-24	-2	21	-2	-21	32	9	0	23	-34	12	-2	-44	
16-24	-4	6	-3	-7	33	1	0	31	-37	4	-3	-38	

Rates(%)³

People													
16-17		22.2	39.1	63.5		19.6	38.7	68.1		34.9	40.2	41.6	
18-24		56.7	19.8	29.3		31.9	19.8	60.2		68.1	19.8	15.1	
16-24		49.7	22.0	36.3		27.0	26.4	63.3		66.1	20.7	16.7	
Men													
16-17		19.4	44.0	65.4		15.6	44.8	71.8		34.4	42.5	40.3	
18-24		57.1	22.8	26.0		26.8	25.5	64.0		70.6	22.4	9.1	
16-24		49.4	25.1	34.0		22.3	32.1	67.1		68.1	23.3	11.3	
Women													
16-17		25.2	34.5	61.5		23.5	34.0	64.5		35.7	36.7	43.5	
18-24		56.2	16.4	32.8		36.9	15.2	56.4		65.5	16.7	21.4	
16-24		50.0	18.6	38.6		31.5	21.8	59.7		64.0	17.4	22.6	

Changes on quarter

People													
16-17		-1.2	2.2	0.6		-1.2	4.5	-0.3		-1.1	-3.3	5.4	
18-24		-0.7	1.1	-0.1		-0.7	1.4	0.2		-0.1	1.0	-1.0	
16-24		-0.8	1.2	0.0		-0.8	2.4	-0.1		-0.2	0.8	-0.6	
Men													
16-17		-0.4	2.6	-0.8		-1.3	8.7	-1.9		2.7	-8.0	4.2	
18-24		-2.1	2.3	0.4		-1.0	3.4	-0.2		-1.8	2.1	-0.2	
16-24		-1.7	2.4	0.2		-1.0	5.3	-1.0		-1.6	1.6	0.2	
Women													
16-17		-2.0	1.5	2.1		-1.2	1.1	1.2		-6.4	3.0	7.1	
18-24		0.8	-0.3	-0.7		-0.4	-0.3	0.6		1.7	-0.2	-1.9	
16-24		0.2	-0.2	-0.1		-0.6	0.0	0.8		1.4	-0.2	-1.4	

Relationship between columns: 1=5+9; 2=6+10; 3=7+11; 4=8+12.

Source: Labour Force Survey

Labour market statistics enquiries: labour.market@ons.gov.uk

1. Not in full-time education includes people in part-time education and/or some form of training. Estimates of the number of young people who are not in employment, education or training ("NEET") cannot therefore be derived from this table.

2. People in full-time education are employed if they have a part-time job or unemployed if they are looking for part-time employment.

3. Denominator = all persons in the relevant age group for economically active, total in employment and economically inactive; economically active for unemployment.

EARNINGS & LABOUR PRODUCTIVITY

15 Average Weekly Earnings - total pay¹

Standard Industrial Classification (2007)

Great Britain, seasonally adjusted

	Whole Economy (100%) ²			Private sector (78%) ^{2,4,5}			Public sector (22%) ^{2,4,5}		
	Weekly Earnings (£)	% changes year on year		Weekly Earnings (£)	% changes year on year		Weekly Earnings (£)	% changes year on year	
		Single month	3 month average ³		Single month	3 month average ³		Single month	3 month average ³
	KAB9	KAC2	KAC3	KAC4	KAC5	KAC6	KAC7	KAC8	KAC9
Oct 09	445	0.1	0.6	442	-0.7	-0.3	457	3.7	3.7
Aug 10	453	2.1	1.6	450	1.9	1.2	466	2.7	2.8
Sep 10 (r)	454	2.2	2.0	451	2.1	1.9	467	2.4	2.6
Oct 10 (r)	455	2.2	2.2	451	2.1	2.0	468	2.5	2.5
Nov 10	456	2.1	2.2 (r)	452	2.0	2.0	468	2.1	2.3
Dec 10	458	1.3	1.9 (r)	451	1.3	1.8 (r)	469	2.7	2.4
Jan 11	456	4.0	2.5	451	4.3	2.5	470	2.0	2.3
Feb 11	457	1.8	2.4	452	1.4	2.3	471	2.0	2.2
Mar 11	461	1.7	2.5	458	1.6	2.4	473	2.4	2.1
Apr 11	460	2.5	2.0	456	2.7	1.9	473	2.2	2.2
May 11	462	2.5	2.2	458	2.5	2.2	473	1.8	2.1
Jun 11	462	2.9	2.6	459	3.4	2.9	475	2.5	2.1
Jul 11	463	2.8	2.8	460	2.9	2.9	477	2.7	2.3
Aug 11 (r)	463	2.2	2.7	460	2.3	2.9	476	2.2	2.5
Sep 11	463	1.9	2.3	460	1.9	2.4	477	2.1	2.3
Oct 11 (p)	464	2.0	2.0	461	2.2	2.1	478	2.0	2.1
	Services, SIC 2007 sections G-S (85%) ²			Finance and business services, SIC 2007 sections K-N (20%) ²			Public sector excluding financial services (21%) ^{2,5}		
	Weekly Earnings (£)	% changes year on year		Weekly Earnings (£)	% changes year on year		Weekly Earnings (£)	% changes year on year	
		Single month	3 month average ³		Single month	3 month average ³		Single month	3 month average ³
	K5BZ	K5C2	K5C3	K5C4	K5C5	K5C6	KAD8	KAD9	KAE2
Oct 09	431	0.3	0.7	565	-0.9	-0.5	452	2.7	2.7
Aug 10 (r)	439	2.1	1.5	585	3.6	1.9	459	2.2	2.2
Sep 10 (r)	441	2.3	2.0	591	4.8	3.6	460	1.9	2.1
Oct 10 (r)	441	2.3	2.2	591	4.6	4.3	461	2.1	2.1
Nov 10	442	2.3	2.3	591	3.7	4.4 (r)	461	1.8	1.9
Dec 10	441	1.9	2.2 (r)	591	2.5	3.6 (r)	461	2.2	2.0
Jan 11	441	4.5	2.9	587	11.4	5.7	462	1.6	1.9
Feb 11	442	1.9	2.7	589	3.5	5.6	462	1.5	1.7
Mar 11	447	2.4	2.9	605	6.0	6.8	463	1.5	1.5
Apr 11	446	2.9	2.4	604	5.4	5.0	464	1.5	1.5
May 11	448	2.8	2.7	610	3.8	5.0	465	1.5	1.5
Jun 11	449	3.4	3.0	613	7.4	5.5	465	1.4	1.5
Jul 11	450	3.1	3.1	613	6.1	5.7	467	1.7	1.5
Aug 11 (r)	450	2.5	3.0	607	3.8	5.8	468	1.9	1.7
Sep 11 (r)	450	2.0	2.5	608	3.0	4.3	468	1.8	1.8
Oct 11 (p)	451	2.3	2.3	610	3.2	3.3	468	1.4	1.7
	Manufacturing, SIC 2007 section C (9%) ²			Construction, SIC 2007 section F (4%) ²			Wholesaling, retailing, hotels & restaurants, SIC 2007 sections G & I (23%) ²		
	Weekly Earnings (£)	% changes year on year		Weekly Earnings (£)	% changes year on year		Weekly Earnings (£)	% changes year on year	
		Single month	3 month average ³		Single month	3 month average ³		Single month	3 month average ³
	K5CA	K5CB	K5CC	K5CD	K5CE	K5CF	K5CG	K5CH	K5CI
Oct 09	505	1.4	1.5	541	0.9	0.7	292	2.3	1.7
Aug 10	525	4.2	4.0	530	-1.8	-0.5	296	2.0 (r)	1.9
Sep 10 (r)	525	3.9	4.2	532	-0.1	-0.9	296	1.6	1.9
Oct 10 (r)	525	3.9	4.0	531	-1.9	-1.3	295	1.1	1.6
Nov 10	523	2.8	3.5	530	-2.1	-1.4	296	1.2	1.3
Dec 10	524	1.3	2.7 (r)	516	-4.7	-2.9 (r)	296	1.1	1.1 (r)
Jan 11	529	2.3	2.1	540	-0.5	-2.4	297	1.2	1.2
Feb 11	520	0.2	1.3	548	1.4	-1.3	295	-0.9	0.5
Mar 11	550	0.3	0.9	555	-1.7	-0.3	302	-3.6	-1.2
Apr 11	528	1.6	0.7	533	-0.9	-0.4	298	0.8	-1.3
May 11	528	1.3	1.1	539	0.5	-0.7	299	2.6	-0.1
Jun 11	530	2.1	1.7	544	2.4	0.7	302	3.1	2.2
Jul 11	530	1.7	1.7	540	1.8	1.6	300	2.0	2.6
Aug 11 (r)	530	1.1	1.7	543	2.5	2.2	299	1.2	2.1
Sep 11 (r)	535	2.0	1.6	544	2.1	2.2	299	1.0	1.4
Oct 11 (p)	531	1.2	1.4	540	1.8	2.2	301	2.2	1.4

Source: Monthly Wages & Salaries Survey

Earnings enquiries: 01633 456773

1. Estimates of total pay include bonuses but exclude arrears of pay.

2. The figure in brackets is the percentage of whole economy employment in that sector or industry for the latest time period.

3. The three month average figures are the changes in the average seasonally adjusted values for the three months ending with the relevant month compared with the same period a year earlier.

4. From July 2009 Royal Bank of Scotland Group plc and Lloyds Banking Group plc are classified to the public sector; previously they are in the private sector.

5. From June 2010 English sixth form colleges are classified to the public sector; previously they are in the private sector.

EARNINGS & LABOUR PRODUCTIVITY

15(1) Average Weekly Earnings - bonus pay

Standard Industrial Classification (2007)

Great Britain, seasonally adjusted

	Whole Economy (100%) ¹						Private sector (78%) ^{1,3,4}			Public sector (22%) ^{1,3,4}		
	Weekly Earnings (£)	% changes year on year			Weekly Earnings (£)	% changes year on year		Weekly Earnings (£)	% changes year on year			
		Single month	3 month average ²			Single month	3 month average ²		Single month	3 month average ²		
	KAF4	KAF5	KAF6	KAF7	KAF8	KAF9	KAG2	KAG3	KAG4			
Oct 09	25	-16.3	-15.0	31	-15.2	-12.9	3	-5.8	-12.6			
Aug 10 (r)	24	-5.3	-6.6	29	-7.1	-8.6	4	43.6	17.0			
Sep 10 (r)	26	3.8	-2.9	33	5.2	-2.6	3	-24.3	-2.3			
Oct 10 (r)	26	3.0	0.5	32	3.0	0.3	4	22.5	8.3			
Nov 10	25	-4.3	0.8 (r)	32	-4.5	1.1 (r)	3	2.3	-1.5 (r)			
Dec 10	24	-8.4	-3.3 (r)	31	-7.4	-3.1 (r)	3	26.9	16.5 (r)			
Jan 11	25	23.8	1.9	32	33.7	4.5	4	-11.7	3.1			
Feb 11	24	-5.3	1.7	31	-3.2	5.0	4	-5.2	0.3			
Mar 11	31	4.1	6.2	35	0.2	7.7	3	-16.2	-11.2			
Apr 11	27	12.2	3.6	34	11.9	2.8	4	2.1	-6.8			
May 11	25	0.7	5.5	35	0.5	3.9	4	-5.1	-6.8			
Jun 11	30	24.9	12.5	37	28.0	12.6	4	12.3	2.9			
Jul 11	31	37.2	20.4	38	31.5	18.7	6	144.0	37.1			
Aug 11 (r)	29	21.6	27.8	36	23.1	27.5	4	1.1	40.1			
Sep 11 (r)	27	4.0	20.1	34	2.8	18.4	4	34.2	48.5			
Oct 11 (p)	28	7.6	10.7	34	7.1	10.5	3	-31.4	-1.9			
	Services, SIC 2007 sections G-S (85%) ¹						Finance and business services, SIC 2007 sections K-N (20%) ¹			Public sector excluding financial services (21%) ^{1,4}		
	Weekly Earnings (£)	% changes year on year		Weekly Earnings (£)	% changes year on year		Weekly Earnings (£)	% changes year on year				
		Single month	3 month average ²		Single month	3 month average ²		Single month	3 month average ²			
	K5CS	K5CT	K5CU	K5CV	K5CW	K5CX	KAH3	KAH4	KAH5			
Oct 09	26	-17.5	-14.6	69	-21.2	-18.7	2	-41.0	-37.1			
Aug 10 (r)	24	-5.7	-6.7	67	1.9	-8.6	2	4.2	-9.0			
Sep 10 (r)	27	1.9	-3.4	77	15.4	4.1	2	-46.5	-27.0			
Oct 10 (r)	26	1.4	-0.8	75	9.5	9.0	2	-3.7	-21.0			
Nov 10	26	-3.5	-0.1 (r)	74	1.0	8.4 (r)	2	-6.6	-23.0 (r)			
Dec 10	25	-9.6	-4.0 (r)	64	-17.1	-2.7 (r)	2	-6.8	-5.6 (r)			
Jan 11	26	33.7	3.9	68	47.2	4.8	2	-23.9	-12.9			
Feb 11	25	-3.3	4.0	68	-2.9	3.5	2	-2.8	-12.0			
Mar 11	29	0.5	7.7	78	10.3	14.5	2	-60.3	-38.1			
Apr 11	28	9.3	2.0	78	15.6	7.6	1	24.7	-31.2			
May 11	27	3.1	4.1	79	-9.3	4.3	1	-21.6	-35.3			
Jun 11	30	23.3	11.7	85	39.1	12.1	1	-40.4	-19.3			
Jul 11	32	38.8	21.0	96	49.6	22.3	2	17.8	-18.7			
Aug 11 (r)	30	24.7	28.8	76	13.5	33.7	2	-4.0	-13.3			
Sep 11 (r)	28	4.3	21.7	73	-4.3	18.1	2	16.5	9.8			
Oct 11 (p)	29	9.9	12.5	72	-4.2	1.1	1	-31.6	-8.1			
	Manufacturing, SIC 2007 section C (9%) ¹			Construction, SIC 2007 section F (4%) ¹			Wholesaling, retailing, hotels & restaurants, SIC 2007 sections G & I (23%) ¹					
	Weekly Earnings (£)	% changes year on year		Weekly Earnings (£)	% changes year on year		Weekly Earnings (£)	% changes year on year				
		Single month	3 month average ²		Single month	3 month average ²		Single month	3 month average ²			
	K5D3	K5D4	K5D5	K5D6	K5D7	K5D8	K5D9	K5DA	K5DB			
Oct 09	16	-26.7	-16.6	21	-8.2	-22.8	17	10.9	8.0			
Aug 10 (r)	19	3.4	0.9	15	-29.1	-21.6	16	-11.4	-6.1			
Sep 10 (r)	19	11.0	9.1	19	13.0	-12.8	16	-8.4	-6.3			
Oct 10 (r)	22	44.0	18.2	11	-45.9	-23.3	17	-2.8	-7.6			
Nov 10	18	-12.2	11.7 (r)	15	-28.7	-23.2 (r)	16	-6.1	-5.8 (r)			
Dec 10	19	2.5	8.7 (r)	13	-34.0	-36.2 (r)	18	11.5	0.7			
Jan 11	24	32.9	6.9	18	-9.9	-24.2	18	-1.6	1.0			
Feb 11	17	-15.6	5.7	25	46.5	-1.5	16	-15.1	-2.5			
Mar 11	30	-1.1	3.6	27	-17.3	0.2	21	-22.6	-14.5			
Apr 11	22	15.5	-0.9	18	14.1	6.6	18	-10.1	-16.7			
May 11	20	3.3	4.7	17	-4.7	-6.4	18	10.0	-10.2			
Jun 11	21	37.9	17.5	20	33.8	13.6	21	39.4	10.7			
Jul 11	20	0.8	12.2	15	-8.9	5.9	20	21.9	23.2			
Aug 11 (r)	18	-8.0	8.2	15	-0.3	7.9	19	16.1	25.5			
Sep 11 (r)	21	8.3	0.4	19	4.0	-1.5	18	13.8	17.3			
Oct 11 (p)	18	-20.0	-7.2	17	49.4	14.2	19	13.9	14.6			

Source: Monthly Wages & Salaries Survey
Earnings enquiries: 01633 456773

1. The figure in brackets is the percentage of whole economy employment in that sector or industry for the latest time period.

2. The three month average figures are the changes in the average seasonally adjusted values for the three months ending with the relevant month compared with the same period a year earlier.

3. From July 2009 Royal Bank of Scotland Group plc and Lloyds Banking Group plc are classified to the public sector; previously they are in the private sector.

4. From June 2010 English sixth form colleges are classified to the public sector; previously they are in the private sector.

EARNINGS & LABOUR PRODUCTIVITY

16 Average Weekly Earnings - regular pay¹

Standard Industrial Classification (2007)

Great Britain, seasonally adjusted

	Whole Economy (100%) ²			Private sector (78%) ^{2,4,5}			Public sector (22%) ^{2,4,5}		
	Weekly Earnings (£)	% changes year on year		Weekly Earnings (£)	% changes year on year		Weekly Earnings (£)	% changes year on year	
		Single month	3 month average ³		Single month	3 month average ³		Single month	3 month average ³
	KAI7	KAI8	KAI9	KAJ2	KAJ3	KAJ4	KAJ5	KAJ6	KAJ7
Oct 09	420	1.0	1.2	410	0.1	0.3	453	3.8	3.8
Aug 10	428	2.3	2.0	418	2.4	1.7	460	1.9	2.3
Sep 10	429	2.2	2.2	418	2.0	2.2 (r)	463	2.5	2.2
Oct 10	429	2.3	2.3	419	2.2	2.2	464	2.5	2.3
Nov 10	430	2.5	2.3	420	2.4	2.2	466	2.4	2.5
Dec 10	430	2.0	2.3	419	1.8	2.1	466	2.5	2.5
Jan 11	433	2.3	2.3	422	2.1	2.1	468	2.5	2.5
Feb 11	432	2.2	2.2	421	2.1	2.0	468	2.1	2.4
Mar 11	433	1.8	2.1	422	1.4	1.9	470	2.8	2.5
Apr 11	433	2.2	2.0	422	2.1	1.9	469	2.2	2.4
May 11	434	2.4	2.1	424	2.6	2.1	469	1.8	2.2
Jun 11	434	2.2	2.3	423	2.2	2.3	470	2.3	2.1
Jul 11	434	1.8	2.1	424	1.8	2.2	470	1.9	2.0
Aug 11	435	1.6	1.8	425	1.5	1.9	471	2.2	2.1
Sep 11	436	1.8	1.7	426	1.9 (r)	1.7	473	2.0	2.0
Oct 11 (p)	438	2.0	1.8	427	2.0	1.8	474	2.1	2.1
	Services, SIC 2007 sections G-S (85%) ²			Finance and business services, SIC 2007 sections K-N (20%) ²			Public sector excluding financial services (21%) ^{2,5}		
	Weekly Earnings (£)	% changes year on year		Weekly Earnings (£)	% changes year on year		Weekly Earnings (£)	% changes year on year	
		Single month	3 month average ³		Single month	3 month average ³		Single month	3 month average ³
	K5DL	K5DM	K5DN	K5DO	K5DP	K5DQ	KAK6	KAK7	KAK8
Oct 09	404	1.1	1.3	495	1.0	1.1	449	2.9	2.9
Aug 10 (r)	413	2.4	1.9	513	3.8	3.0	455	1.5	1.7
Sep 10 (r)	414	2.3	2.3	515	4.2	3.8	458	2.2	2.0
Oct 10 (r)	414	2.4	2.4	517	4.5	4.2	459	2.3	2.0
Nov 10	415	2.6	2.5	518	4.2	4.3	460	2.3	2.3
Dec 10	416	2.5	2.5	523	5.0	4.6	461	2.3	2.3
Jan 11	418	2.7	2.6	529	5.5	4.9	462	2.4	2.3
Feb 11	418	2.6	2.6	526	5.6	5.4	462	2.0	2.2
Mar 11	418	2.2	2.5	526	3.8	4.9	464	2.6	2.3
Apr 11	419	2.7	2.5	528	4.8	4.7	462	1.8	2.1
May 11	420	2.8	2.5	531	5.4	4.6	463	1.6	2.0
Jun 11	420	2.5	2.7	530	5.3	5.2	463	2.1	1.8
Jul 11	420	1.9	2.4	530	3.8	4.8	463	1.7	1.8
Aug 11	420	1.7	2.0	530 (r)	3.1	4.1	464	2.1	2.0
Sep 11 (r)	422	1.9	1.8	533	3.4	3.4	466	1.7	1.8
Oct 11 (p)	423	2.2	1.9	536	3.7	3.4	466	1.5	1.8
	Manufacturing, SIC 2007 section C (9%) ²			Construction, SIC 2007 section F (4%) ²			Wholesaling, retailing, hotels & restaurants, SIC 2007 sections G & I (23%) ²		
	Weekly Earnings (£)	% changes year on year		Weekly Earnings (£)	% changes year on year		Weekly Earnings (£)	% changes year on year	
		Single month	3 month average ³		Single month	3 month average ³		Single month	3 month average ³
	K5DU	K5DV	K5DW	K5DX	K5DY	K5DZ	K5E2	K5E3	K5E4
Oct 09	488	2.2	2.0	522	1.2	1.7	275	1.9	1.4
Aug 10	505	4.3	4.2 (r)	506	-1.1	0.0	279	2.6	2.3
Sep 10 (r)	504	3.6	4.1	512	-0.5	-0.7	279	2.1	2.3
Oct 10 (r)	504	3.3	3.7	517	-0.8	-0.8	278	1.3	2.0
Nov 10	504	3.2	3.4	516	-1.0	-0.8	279	1.6	1.6 (r)
Dec 10	505	1.2	2.6 (r)	507	-2.7	-1.5	277	0.5	1.1
Jan 11	505	1.5	2.0	524	0.0	-1.2	279	1.4	1.2
Feb 11	505	1.0	1.2	524	0.3	-0.8	278	0.4	0.8
Mar 11	507	0.6	1.0	527	0.5	0.3	278	-0.1	0.6
Apr 11	506	1.0	0.9	516	-1.2	-0.1	281	1.6	0.6
May 11	508	1.2	0.9	519	0.6	0.0	281	2.2	1.2
Jun 11	509	1.2	1.1	525	1.4	0.3	281	1.0	1.6
Jul 11	510	1.7	1.4	522	2.1	1.4	281	0.9	1.4
Aug 11	511	1.3	1.4	519	2.6	2.0	281	0.6	0.8
Sep 11 (r)	513	1.8	1.6	522	2.0	2.2	281	0.5	0.6
Oct 11 (p)	512	1.7	1.6	522	0.9	1.8	283	1.6	0.9

Source: Monthly Wages & Salaries Survey

Earnings enquiries: 01633 456773

1. Estimates of regular pay exclude bonuses and arrears of pay.

2. The figure in brackets is the percentage of whole economy employment in that sector or industry for the latest time period.

3. The three month average figures are the changes in the average seasonally adjusted values for the three months ending with the relevant month compared with the same period a year earlier.

4. From July 2009 Royal Bank of Scotland Group plc and Lloyds Banking Group plc are classified to the public sector; previously they are in the private sector.

5. From June 2010 English sixth form colleges are classified to the public sector; previously they are in the private sector.

EARNINGS & LABOUR PRODUCTIVITY

17 Labour productivity¹

United Kingdom
Seasonally adjusted

	Whole economy				Manufacturing ²			Services ²	
	Output per worker	Output per job	Output per hour	Unit labour costs	Unit wage costs	Output per job	Output per hour	Output per job	Output per hour
Indices (2008=100)									
	A4YM	LNNN	LZVB	LNNL	DIX4	DJ4P	DJK6	DJE3	DJP9
2009 Q2	96.9	96.8	97.5	105.7	103.7	97.3	98.3	98.0	98.5
2009 Q3	97.2	97.1	98.5	105.3	104.5	96.7	98.8	98.2	99.6
2009 Q4	97.8	97.8	98.9	106.3	104.9	98.0	99.2	98.9	100.0
2010 Q1	98.2	98.3	99.4	107.5	104.7	101.5	101.8	99.1	100.4
2010 Q2	98.5	98.4	99.2	106.5	101.3	103.3	102.9	98.8	99.7
2010 Q3	98.6	98.6	99.4	105.5	100.7	104.7	104.5	98.7	99.8
2010 Q4	98.3	98.3	99.0	105.8	100.4	105.1	104.1	98.5	99.6
2011 Q1	98.3	98.1	99.2	106.2	100.4	106.4	104.1	98.4	100.0
2011 Q2	98.3	98.3	100.6	106.5	99.2	107.4	107.9	98.6	101.1
Per cent change on quarter a year ago									
	A4YN	LNNP	LZVD	DMWN	DJ4J	DJ4R	DJK8	DJE5	DJQ3
2009 Q2	-4.0	-4.0	-3.7	7.0	3.9	-3.1	-2.6	-2.6	-2.6
2009 Q3	-2.4	-2.5	-1.1	4.5	4.7	-3.7	-2.1	-1.3	0.1
2009 Q4	0.2	0.2	1.0	3.7	1.4	0.7	1.8	0.8	1.6
2010 Q1	1.8	2.1	1.8	4.1	0.1	6.1	3.4	1.7	1.7
2010 Q2	1.7	1.7	1.7	0.8	-2.4	6.2	4.7	0.9	1.3
2010 Q3	1.4	1.5	1.0	0.2	-3.6	8.3	5.7	0.6	0.2
2010 Q4	0.5	0.5	0.1	-0.5	-4.3	7.3	5.0	-0.4	-0.4
2011 Q1	0.1	-0.2	-0.2	-1.2	-4.1	4.9	2.3	-0.7	-0.4
2011 Q2	-0.2	-0.2	1.4	0.0	-2.1	4.0	4.9	-0.2	1.4
Per cent change on previous quarter									
	A4YO	DMWR	TXBB	DMWO	DJ4I	DJ4Q	DJK7	DJE4	DJQ2
2009 Q2	0.5	0.6	-0.1	2.3	-0.8	1.8	-0.2	0.5	-0.2
2009 Q3	0.3	0.3	1.0	-0.3	0.8	-0.6	0.6	0.2	1.1
2009 Q4	0.6	0.7	0.5	1.0	0.3	1.3	0.3	0.7	0.4
2010 Q1	0.4	0.5	0.5	1.1	-0.2	3.6	2.6	0.2	0.4
2010 Q2	0.4	0.2	-0.3	-0.9	-3.2	1.8	1.0	-0.3	-0.6
2010 Q3	0.1	0.1	0.3	-0.9	-0.5	1.4	1.6	-0.1	0.0
2010 Q4	-0.3	-0.3	-0.5	0.2	-0.3	0.4	-0.4	-0.2	-0.2
2011 Q1	0.0	-0.2	0.3	0.4	0.0	1.2	0.0	-0.1	0.4
2011 Q2	0.0	0.2	1.3	0.3	-1.2	0.9	3.7	0.1	1.1

1. More detailed estimates are available in the Labour Productivity Statistical Bulletin at:

<http://www.ons.gov.uk/ons/rel/productivity/labour-productivity/q2-2011/index.html>

2. The manufacturing and services series are as defined by Standard Industrial Classification 2007 (SIC 2007).

Source: Office for National Statistics

Labour productivity and unit labour cost enquiries

Tel: 01633 456299

E-mail: productivity@ons.gsi.gov.uk

REGIONAL AND INTERNATIONAL SUMMARY

18(1) Regional summary of labour market headline indicators¹

Thousands, seasonally adjusted

Headline estimates for August to October 2011

	Economically active		Employment		Unemployment		Economically inactive	
	Aged 16+	Aged 16-64	Aged 16+	Aged 16-64	Aged 16+	Aged 16+	Aged 16-64	Aged 16-64
	Level	Rate (%) ²	Level	Rate (%) ²	Level	Rate (%) ³	Level	Rate (%) ²
	1	2	3	4	5	6	7	8
North East	1,267	73.9	1,118	65.1	148	11.7	437	26.1
North West	3,448	75.6	3,146	69.0	301	8.7	1,079	24.4
Yorkshire and The Humber	2,649	74.9	2,396	67.7	253	9.5	861	25.1
East Midlands	2,310	77.9	2,127	71.7	182	7.9	635	22.1
West Midlands	2,632	74.4	2,390	67.5	243	9.2	880	25.6
East of England	3,040	80.1	2,822	74.2	218	7.2	731	19.9
London	4,267	75.6	3,844	68.0	423	9.9	1,347	24.4
South East	4,425	79.2	4,153	74.2	272	6.1	1,123	20.8
South West	2,686	79.1	2,509	73.8	177	6.6	685	20.9
England	26,723	76.9	24,506	70.4	2,216	8.3	7,779	23.1
Wales	1,456	74.6	1,323	67.8	133	9.1	481	25.4
Scotland	2,702	77.8	2,474	71.1	229	8.5	754	22.2
Great Britain	30,881	76.9	28,303	70.4	2,578	8.3	9,014	23.1
Northern Ireland	864	73.1	804	67.9	60	6.9	311	26.9
United Kingdom	31,745	76.8	29,107	70.3	2,638	8.3	9,325	23.2

Change on quarter (change since May to July 2011)⁴

	Economically active		Employment		Unemployment		Economically inactive	
	Aged 16+	Aged 16-64	Aged 16+	Aged 16-64	Aged 16+	Aged 16+	Aged 16-64	Aged 16-64
	Level	Rate (%) ²	Level	Rate (%) ²	Level	Rate (%) ³	Level	Rate (%) ²
North East	-3	-0.1	-15	-0.8	12	1.0	1	0.1
North West	33	0.6	14	0.3	19	0.5	-28	-0.6
Yorkshire and The Humber	-18	-0.6	-27	-0.8	9	0.4	20	0.6
East Midlands	-30	-0.4	-26	-0.3	-4	-0.1	11	0.4
West Midlands	3	0.0	-1	0.0	4	0.1	-1	0.0
East of England	13	0.3	-13	-0.5	26	0.8	-9	-0.3
London	20	0.0	7	-0.2	13	0.3	4	0.0
South East	12	0.0	-4	-0.3	16	0.3	-1	0.0
South West	20	0.7	19	0.7	2	0.0	-24	-0.7
England	51	0.1	-45	-0.2	96	0.3	-28	-0.1
Wales	10	0.6	-1	0.1	11	0.7	-13	-0.6
Scotland	2	0.3	-22	-0.4	25	0.9	-11	-0.3
Great Britain	63	0.1	-69	-0.2	132	0.4	-52	-0.1
Northern Ireland	2	0.2	6	0.6	-4	-0.5	-2	-0.2
United Kingdom	65	0.1	-63	-0.2	128	0.4	-54	-0.1

Change on year (change since August to October 2010)

	Economically active		Employment		Unemployment		Economically inactive	
	Aged 16+	Aged 16-64	Aged 16+	Aged 16-64	Aged 16+	Aged 16+	Aged 16-64	Aged 16-64
	Level	Rate (%) ²	Level	Rate (%) ²	Level	Rate (%) ³	Level	Rate (%) ²
North East	1	-0.1	-23	-1.5	24	1.9	1	0.1
North West	18	0.3	-4	-0.1	22	0.6	-16	-0.3
Yorkshire and The Humber	9	-0.3	1	-0.4	7	0.2	14	0.3
East Midlands	25	0.7	30	1.0	-5	-0.3	-20	-0.7
West Midlands	-39	-1.3	-45	-1.4	5	0.3	45	1.3
East of England	47	0.9	28	0.4	19	0.5	-31	-0.9
London	62	0.0	17	-0.7	44	0.9	19	0.0
South East	-16	-0.9	-14	-0.9	-2	0.0	53	0.9
South West	-12	-0.4	-35	-1.0	22	0.9	13	0.4
England	93	-0.1	-44	-0.5	137	0.5	78	0.1
Wales	6	0.9	-3	0.6	8	0.5	-17	-0.9
Scotland	-2	0.2	0	0.2	-2	-0.1	-5	-0.2
Great Britain	96	-0.1	-46	-0.4	142	0.4	56	0.1
Northern Ireland	28	1.8	32	2.1	-3	-0.6	-19	-1.8
United Kingdom	125	0.0	-14	-0.3	139	0.4	37	0.0

Relationship between columns: 1=3+5

Source: Labour Force Survey

1. Labour Force Survey is tabulated by region of residence.

Labour market statistics enquiries: labour.market@ons.gov.uk

2. Denominator = all persons aged 16 to 64.

3. Denominator = Total economically active.

4. Quarter on quarter changes at regional level are particularly subject to sampling variability and should be interpreted in the context of changes over several quarters rather than in isolation.

REGIONAL AND INTERNATIONAL SUMMARY

18(2) Regional labour market summary

Thousands, seasonally adjusted

	Employer Surveys ¹		Jobcentre Plus administrative system ¹					
	Workforce jobs ² (September 2011)		Claimant count ³ (November 2011)					
	Total		Total		Men		Women	
	Level	Rate (%) ⁴	Level	Rate (%) ⁴	Level	Rate (%) ⁴	Level	Rate (%) ⁴
North East	1,143	89.8	7.3	62.0	9.2	27.8	4.9	
North West	3,287	199.9	5.7	136.9	7.2	63.0	4.0	
Yorkshire and The Humber	2,465	161.2	6.2	110.6	7.7	50.6	4.3	
East Midlands	2,176	108.4	4.9	72.4	6.0	36.0	3.6	
West Midlands	2,571	169.7	6.3	114.6	7.8	55.1	4.5	
East of England	2,872	117.3	4.0	76.3	4.8	41.0	3.0	
London	4,933	237.7	4.8	145.2	5.5	92.5	4.1	
South East	4,393	142.5	3.2	94.4	4.0	48.1	2.4	
South West	2,602	90.1	3.3	60.8	4.3	29.3	2.3	
England	26,442	1316.6	4.8	873.2	5.9	443.4	3.6	
Wales	1,357	78.1	5.5	54.0	7.1	24.1	3.7	
Scotland	2,611	143.0	5.3	99.1	6.9	43.9	3.5	
Great Britain	30,409	1537.7	4.9	1026.3	6.1	511.4	3.6	
Northern Ireland	836	60.9	6.9	43.2	8.9	17.7	4.4	
United Kingdom	31,271	1598.6	5.0	1069.5	6.2	529.1	3.6	

Changes on period (period specified below):

	Workforce jobs ² (Change on June 2011)		Jobcentre Plus administrative system ¹					
	Total		Claimant count ³ (Change on October 2011)					
	Total		Total		Men		Women	
	Level	Rate (%) ⁴	Level	Rate (%) ⁴	Level	Rate (%) ⁴	Level	Rate (%) ⁴
North East	3	0.5	0.0	0.1	0.0	0.4	0.1	
North West	-17	0.7	0.0	0.4	0.0	0.3	0.0	
Yorkshire and The Humber	7	0.5	0.0	0.3	0.0	0.2	0.0	
East Midlands	-5	0.8	0.0	0.5	0.0	0.3	0.0	
West Midlands	20	-0.6	0.0	-0.6	0.0	0.0	0.0	
East of England	31	0.5	0.0	0.3	0.0	0.2	0.0	
London	101	1.1	0.0	0.5	0.0	0.6	0.0	
South East	-19	-0.6	0.0	-0.3	0.0	-0.3	0.0	
South West	16	0.6	0.0	0.4	0.0	0.2	0.0	
England	138	3.5	0.0	1.6	0.0	1.9	0.0	
Wales	0	-0.3	0.0	-0.2	0.0	-0.1	0.0	
Scotland	11	-0.5	0.0	-0.5	0.0	0.0	0.0	
Great Britain	149	2.7	0.0	0.9	0.0	1.8	0.0	
Northern Ireland	2	0.3	0.0	0.1	0.0	0.2	0.0	
United Kingdom	150	3.0	0.0	1.0	0.0	2.0	0.0	

Labour market statistics enquiries: labour.market@ons.gov.uk

1. Workforce jobs are tabulated by region of workplace. Claimant count is tabulated by region of claimant's residence.

2. HM Forces stationed abroad are included in the UK jobs estimates but not in the regional jobs estimates.

3. Count of claimants of Jobseeker's Allowance.

4. Denominator = Claimant count + Workforce jobs.

19 International comparisons

As published by EUROSTAT: (not seasonally adjusted)				As published by EUROSTAT on 30 November 2011 (seasonally adjusted)					
	Latest period	Employment rate (%) ^{1,2}	Change on year %		Latest Period	Unemployment rate (%) ³	Change on period %	Change on year %	
European Union (EU)				European Union (EU)					
Austria	YXSN	Apr-Jun 11	72.1	0.7	Austria	ZXDS	Oct 11	4.1	0.2
Belgium	YXSO	Apr-Jun 11	62.5	1.0	Belgium	ZXDI	Oct 11	6.6	-0.1
Bulgaria	A495	Apr-Jun 11	58.2	-2.0	Bulgaria	A492	Oct 11	12.1	0.2
Cyprus	A4AC	Apr-Jun 11	69.0	-0.8	Cyprus	A4AN	Oct 11	8.2	0.3
Czech Republic	A4AD	Apr-Jun 11	65.7	0.8	Czech Republic	A4AO	Oct 11	6.7	0.1
Denmark	YXSP	Jul-Sep 11	73.8	0.0	Denmark	ZXDJ	Sep 11	7.6	0.1
Estonia	A4AE	Jul-Sep 11	67.2	5.1	Estonia	A4AP	2011 Q3	11.3	-1.4
Finland	YXSQ	Apr-Jun 11	70.1	0.9	Finland	ZXDU	Oct 11	7.8	0.0
France	YXSR	Apr-Jun 11	64.1	0.1	France	ZXDN	Oct 11	9.8	0.0
Germany	YXSS	Apr-Jun 11	72.5	1.5	Germany	ZXDK	Oct 11	5.5	-0.2
Greece	YXST	Apr-Jun 11	56.4	-3.7	Greece	ZXDL	Aug 11	18.3	0.6
Hungary	A4AF	Apr-Jun 11	55.8	0.5	Hungary	A4AQ	Oct 11	9.8	-0.1
Ireland	YXSU	Apr-Jun 11	59.5	-0.9	Ireland	ZXDO	Oct 11	14.3	0.0
Italy	YXSV	Apr-Jun 11	57.3	0.1	Italy	ZXDP	Oct 11	8.5	0.2
Latvia	A4AG	Apr-Jun 11	61.4	2.5	Latvia	A4AR	2011 Q2	16.2	-0.1
Lithuania	A4AH	Jul-Sep 11	61.4	2.9	Lithuania	A4AS	2011 Q3	15.0	-0.5
Luxembourg	YXSW	Apr-Jun 11	63.8	-0.8	Luxembourg	ZXDQ	Oct 11	4.7	-0.1
Malta	A4AI	Apr-Jun 11	57.3	1.3	Malta	A4AT	Oct 11	6.7	0.1
Netherlands	YXSX	Apr-Jun 11	74.7	0.0	Netherlands	ZXDR	Oct 11	4.8	0.3
Poland	A4AJ	Apr-Jun 11	59.7	0.4	Poland	A4AU	Oct 11	9.9	0.1
Portugal	YXSY	Jul-Sep 11	64.5	-1.0	Portugal	ZXDT	Oct 11	12.9	0.1
Romania	A494	Apr-Jun 11	58.8	-1.3	Romania	A48Z	Oct 11	7.3	-0.4
Slovak Republic	A4AK	Apr-Jun 11	59.6	1.0	Slovak Republic	A4AV	Oct 11	13.6	0.1
Slovenia	A4AL	Apr-Jun 11	64.4	-2.1	Slovenia	A4AW	Oct 11	7.9	0.0
Spain	YXSZ	Jul-Sep 11	57.9	-1.0	Spain	ZXDM	Oct 11	22.8	0.3
Sweden	YXTA	Jul-Sep 11	75.4	1.3	Sweden	ZXDV	Oct 11	7.5	0.2
United Kingdom	ANZ6	Apr-Jun 11	69.4	0.1	United Kingdom ⁴	ZXDW	Aug 11	8.3	0.2
Total EU⁵	A496	Apr-Jun 11	64.5	0.3	Total EU⁵	A493	Oct 11	9.8	0.1
Eurozone ⁵	YXTC	Apr-Jun 11	64.5	0.3	Eurozone ⁵	ZXDH	Oct 11	10.3	0.1
As published by national statistical offices				As published by national statistical offices (seasonally adjusted)					
Canada (NSA)	IUUK	Jul-Sep 11	73.0	0.5	Canada	ZXDZ	Nov 11	7.4	0.1
Japan (NSA) ⁶	YXTF	Jul-Sep 11	70.2	-0.1	Japan ⁶	ZXDY	Oct 11	4.5	0.4
United Kingdom (SA)	LF24	Aug-Oct 11	70.3	-0.3	United Kingdom ⁴	MGSX	Aug-Oct 11	8.3	0.4
United States (NSA)	YXTE	Jul-Sep 11	66.5	-0.2	United States	ZXDZ	Nov 11	8.6	-0.4

Sources: Eurostat, national statistical offices.
Labour market statistics enquiries: labour.market@ons.gov.uk

1. The UK employment rate shown in the lower part of the table - as published by the Office for National Statistics - is seasonally adjusted; all other employment rates are unadjusted.

2. All employment rates for EU countries published by EUROSTAT (including the rate for the UK) are based on the population aged 15-64. The rates for Canada and Japan are also based on the population aged 15-64, but the rate for the US is for those aged 16-64. The employment rate for the UK published by the Office for National Statistics is based on the population aged 16-64.

5. The "Total EU" series consist of all 27 EU countries. The Eurozone figures consist of the following EU countries: Austria, Belgium, Cyprus, Estonia, Finland, France, Germany, Greece, Ireland, Italy, Luxembourg, Malta, Netherlands, Portugal, Slovak Republic, Slovenia and Spain.

6. The Japanese employment rate from January-March 2011 and the unemployment rate between March and August 2011 exclude those regions of Japan affected by the March 2011 earthquake and tsunami.

3. Unemployment rates published by EUROSTAT for most EU countries (but not for the UK), are calculated by extrapolating from the most recent LFS data using monthly registered unemployment data. A standard population basis (15-74) is used by EUROSTAT except for Spain, Italy and the UK (16-74). The unemployment rate for the US is based on those aged 16 and over, but the rates for Canada and Japan are for those aged 15 and over. All unemployment rates are seasonally adjusted.

4. The unemployment rate for the UK published by EUROSTAT is based on the population aged 16-74 but the unemployment rate for the UK published by the Office for National Statistics is based on those aged 16 and over. There are other minor definitional differences.

20 Labour disputes

United Kingdom, not seasonally adjusted

	Working days lost (thousands) ^{1,2}	Working days lost in the Public Sector (thousands) ^{1,2}	Working days lost in the Private Sector (thousands) ^{1,2}	Number of stoppages ^{3,4}	Number of stoppages in the Public Sector ⁴	Number of stoppages in the Private Sector ⁴	Workers involved (thousands) ^{1,3}
	1	2	3	4	5	6	7
	BBFW	F8XZ	F8Y2	BLUU	F8Y3	F8Y4	BLUT
2009 Oct	204	199	5	10	5	5	178
2010 Oct	13	12	2	11	4	7	11
Nov	24	24	1	11	6	5	13
Dec	7	2	5	15	7	8	4
2011 Jan (p)	9	4	5	17	9	8	4
Feb (p)	2	1	1	12	7	5	2
Mar (p)	49	16	34	11	7	4	38
Apr (p)	13	5	9	15	10	5	6
May (p)	11	2	9	20	15	5	2
Jun (p)	272	261	11	30	21	9	311
Jul (p)	5	4	1	13	8	5	4
Aug (p)	5	3	2	12	6	6	4
Sep (p)	7	4	3	19 (r)	10	9 (r)	6
Oct (p)	11	10	1	13	8	5	12
Cumulative totals 12 months to:							
Oct 10	372	314	58	97	50	47	133
Oct 11 (p)	417	337	80	135	84	51	397

Relationship between columns 1=2+3; 4=5+6

Source: ONS Labour Disputes Inquiry
Labour disputes enquiries 01633 456724

1. Estimates of working days lost and workers involved are shown to the nearest thousand. Unrounded estimates of less than 500 therefore round to zero.

2. Due to rounding the working days lost for the public and private sectors may not add up to the total working days lost.

3. The latest 12 month cumulative totals for the figures in these columns will not necessarily equal the sum of the 12 months as some disputes continue for over one month. These disputes appear in each month's data, but only once in the total.

4. These series exclude disputes which do not result in a stoppage of work, those involving fewer than ten workers or lasting less than one day unless the total number of working days lost in the dispute is 100 or more.

VACANCIES

21 Vacancies¹ by size of business

United Kingdom (thousands), seasonally adjusted

	All Vacancies	Number of employees				
		1-9	10-49	50-249	250-2499	2500+
		AP2Y	ALY5	ALY6	ALY7	ALY8
Levels						
Sep-Nov 2009	433	49	47	49	94	194
Sep-Nov 2010	(r) 468	74	56	59	82	198
Oct-Dec 2010	481	69	54	58	84	216
Nov-Jan 2011	498	73	55	58	87	225
Dec-Feb 2011	495	71	59	57	90	219
Jan-Mar 2011	483	73	59	56	90	206
Feb-Apr 2011	470	69	62	56	90	193
Mar-May 2011	459	72	57	56	89	185
Apr-Jun 2011	461	71	57	56	91	186
May-Jul 2011	455	68	54	56	90	187
Jun-Aug 2011	(r) 462	70	56	56	92	188
Jul-Sep 2011	(r) 464	69	59	58	91	187
Aug-Oct 2011	(r) 461	68	57	60	88	189
Sep-Nov 2011	(p) 455	64	58	58	86	189
Change on quarter	* -8	-6	2	1	-6	1
Change %	* -1.6	-8.6	4.1	2.3	-6.2	0.3
Change on year	-13	-10	2	-2	5	-9
Change %	-2.9	-12.9	4.1	-3.0	6.0	-4.7

1. Excludes Agriculture, Forestry and Fishing.

Source: ONS Vacancy Survey

Labour market statistics enquiries: labour.market@ons.gov.uk

* Change on previous non-overlapping three month rolling average time period.

21(1) Vacancies¹ and Unemployment

United Kingdom (thousands), seasonally adjusted

	All Vacancies ¹	Unemployment ²	Number of unemployed people per vacancy
	AP2Y	MGSC	JPC5
Levels			
Aug-Oct 2009	425	2,480	5.8
Aug-Oct 2010	455	2,499	5.5
Nov-Jan 2011	498	2,518	5.1
Feb-Apr 2011	470	2,430	5.2
May-Jul 2011	455	2,510	5.5
Aug-Oct 2011	461 (r)	2,638	5.7
Change on quarter	6	128	0.2
Change %	1.4	5.1	
Change on year	6	139	0.2
Change %	1.3	5.6	

Source: ONS Vacancy Survey/ Labour Force Survey

Labour market statistics enquiries: labour.market@ons.gov.uk

1. Excludes Agriculture, Forestry and Fishing.

2. Unemployment estimates are produced from the Labour Force Survey (LFS) and are always one period behind the ONS Vacancy Survey estimates. This table therefore shows estimates for the same periods as shown in table 1 (which shows LFS estimates).

VACANCIES

22 Vacancies by industry

Standard Industrial Classification (2007)

United Kingdom (thousands), seasonally adjusted

SIC 2007 sections	All vacancies ¹	Mining & quarrying	Manu- facturing	Electricity, gas, steam & air conditioning supply ²	Water supply, sewerage, waste & remediation activities ²	Construction	Wholesale & retail trade; repair of motor vehicles and motor cycles	Transport & storage	Accommoda- tion & food service activities	Information & communica- tion
	B-S	B	C	D	E	F	G	H	I	J
	AP2Y	JP9H	JP9I	JP9J	JP9K	JP9L	JP9M	JP9N	JP9O	JP9P
Levels (thousands)										
Sep-Nov 2009	433	1	29	2	1	9	81	17	41	25
Sep-Nov 2010 (r)	468	1	33	3	1	12	93	22	42	27
Oct-Dec 2010	481	1	34	3	1	13	95	21	43	28
Nov-Jan 2011	498	1	36	3	1	14	96	20	45	30
Dec-Feb 2011	495	1	38	3	1	13	95	20	47	31
Jan-Mar 2011	483	2	40	3	2	13	92	20	45	33
Feb-Apr 2011	470	2	42	3	2	12	91	20	44	33
Mar-May 2011	459	2	40	3	2	11	91	20	43	33
Apr-Jun 2011	461	2	39	3	1	11	93	21	45	32
May-Jul 2011	455	2	36	3	2	10	92	21	44	32
Jun-Aug 2011 (r)	462	2	36	3	2	10	91	21	44	33
Jul-Sep 2011 (r)	464	2	36	3	2	11	93	20	43	31
Aug-Oct 2011 (r)	461	2	36	3	1	10	92	19	43	31
Sep-Nov 2011 (p)	455	2	34	3	2	9	92	19	43	30
Change on quarter *	-8	0	-2	0	0	-1	1	-2	-1	-3
Change % *	-1.6	12.5	-4.2	13.8	0.0	-10.6	1.2	-10.6	-2.7	-9.4
Change on year	-13	1	2	0	0	-2	-1	-3	1	3
Change %	-2.9	38.5	4.6	10.0	25.0	-19.1	-1.3	-13.5	1.7	9.5
Vacancies per 100 employee jobs										
	AP2Z	JPA2	JPA3	JPA4	JPA5	JPA6	JPA7	JPA8	JPA9	JPB2
Sep-Nov 2009 (r)	1.6	1.2	1.2	2.2	0.6	0.7	1.8	1.4	2.3	2.5
Sep-Nov 2010 (r)	1.8	2.5	1.4	2.3	0.8	0.9	2.1	1.8	2.4	2.9
Oct-Dec 2010 (r)	1.8	2.5	1.4	2.1	0.8	1.0	2.2	1.7	2.5	3.0
Nov-Jan 2011 (r)	1.9	2.7	1.5	2.1	0.9	1.1	2.2	1.7	2.5	3.2
Dec-Feb 2011 (r)	1.9	2.7	1.6	2.2	0.9	1.0	2.2	1.7	2.7	3.3
Jan-Mar 2011 (r)	1.8	2.8	1.7	2.3	1.3	1.0	2.1	1.7	2.6	3.4
Feb-Apr 2011 (r)	1.8	3.0	1.8	2.2	1.4	0.9	2.1	1.6	2.5	3.4
Mar-May 2011 (r)	1.7	3.0	1.7	2.3	1.4	0.9	2.1	1.6	2.5	3.4
Apr-Jun 2011 (r)	1.7	3.2	1.6	2.3	1.0	0.8	2.1	1.7	2.6	3.4
May-Jul 2011 (r)	1.7	3.2	1.5	2.2	1.0	0.8	2.1	1.7	2.5	3.4
Jun-Aug 2011 (r)	1.8	3.0	1.5	2.3	1.0	0.8	2.1	1.7	2.5	3.5
Jul-Sep 2011 (r)	1.8	3.2	1.5	2.3	1.1	0.8	2.1	1.6	2.5	3.3
Aug-Oct 2011 (r)	1.7	3.2	1.5	2.5	1.0	0.8	2.1	1.6	2.5	3.2
Sep-Nov 2011 (p)	1.7	3.4	1.5	2.6	1.0	0.7	2.1	1.5	2.5	3.2
Change on quarter *	0.0	0.4	-0.1	0.3	0.0	-0.1	0.0	-0.2	-0.1	-0.3
Change on year	-0.1	0.9	0.1	0.2	0.2	-0.2	0.0	-0.2	0.0	0.3

SIC 2007 sections	Financial & insurance activities	Real estate activities ²	Professional scientific & technical activities	Administrative & support service activities	Public admin & defence; compulsory social security	Education	Human health & social work activities ²	Arts, entertainment & recreation ²	Other service activities	Total services
	K	L	M	N	O	P	Q	R	S	G-S
	JP9Q	JP9R	JP9S	JP9T	JP9U	JP9V	JP9W	JP9X	JP9Y	JP9Z
Levels (thousands)										
Sep-Nov 2009	22	5	30	24	17	51	59	10	8	400
Sep-Nov 2010 (r)	31	6	39	28	19	30	59	10	13	430
Oct-Dec 2010	33	5	40	28	32	30	55	9	12	442
Nov-Jan 2011	33	5	42	28	44	30	50	8	12	458
Dec-Feb 2011	33	6	41	28	38	28	50	9	11	451
Jan-Mar 2011	31	5	42	31	27	28	51	11	10	437
Feb-Apr 2011	29	5	42	31	16	27	53	11	9	422
Mar-May 2011	28	5	44	30	10	28	51	11	8	413
Apr-Jun 2011	28	5	44	30	9	29	52	10	9	416
May-Jul 2011	26	5	41	33	8	30	50	12	9	413
Jun-Aug 2011 (r)	26	5	44	33	8	30	53	13	10	420
Jul-Sep 2011 (r)	26	5	44	32	8	30	53	14	11	421
Aug-Oct 2011 (r)	26	6	46	32	8	31	55	13	9	419
Sep-Nov 2011 (p)	26	6	43	33	9	30	55	11	9	414
Change on quarter *	0	2	-2	0	0	0	2	-1	-1	-7
Change % *	-0.4	34.0	-4.3	0.6	3.6	0.3	3.6	-8.8	-9.5	-1.5
Change on year	-5	0	4	5	-11	1	-4	1	-4	-16
Change %	-15.6	3.3	9.3	16.8	-55.4	1.7	-6.8	14.0	-31.7	-3.7
Vacancies per 100 employee jobs										
	JPB3	JPB4	JPB5	JPB6	JPB7	JPB8	JPB9	JPC2	JPC3	JPC4
Sep-Nov 2009 (r)	2.1	1.3	1.7	1.2	1.1	2.1	1.6	1.6	1.5	1.8
Sep-Nov 2010 (r)	3.0	1.6	2.1	1.4	1.3	1.2	1.6	1.5	2.4	1.9
Oct-Dec 2010 (r)	3.1	1.4	2.1	1.3	2.1	1.2	1.5	1.3	2.3	2.0
Nov-Jan 2011 (r)	3.2	1.4	2.2	1.4	2.9	1.2	1.4	1.2	2.4	2.0
Dec-Feb 2011 (r)	3.1	1.4	2.2	1.4	2.5	1.2	1.3	1.4	2.2	2.0
Jan-Mar 2011 (r)	3.0	1.3	2.3	1.5	1.8	1.1	1.4	1.6	1.9	1.9
Feb-Apr 2011 (r)	2.8	1.3	2.3	1.5	1.0	1.1	1.4	1.7	1.8	1.9
Mar-May 2011 (r)	2.7	1.2	2.4	1.5	0.6	1.1	1.4	1.6	1.5	1.8
Apr-Jun 2011 (r)	2.6	1.2	2.3	1.5	0.6	1.2	1.4	1.5	1.7	1.9
May-Jul 2011 (r)	2.5	1.2	2.2	1.6	0.5	1.2	1.4	1.8	1.8	1.8
Jun-Aug 2011 (r)	2.5	1.2	2.4	1.6	0.5	1.2	1.4	1.9	1.8	1.9
Jul-Sep 2011 (r)	2.5	1.4	2.4	1.6	0.5	1.2	1.4	2.1	2.0	1.9
Aug-Oct 2011 (r)	2.5	1.5	2.5	1.5	0.5	1.2	1.5	2.1	1.7	1.9
Sep-Nov 2011 (p)	2.5	1.6	2.3	1.6	0.6	1.2	1.5	1.7	1.6	1.8
Change on quarter *	0.0	0.4	-0.1	0.0	0.0	0.0	0.1	-0.2	-0.2	0.0
Change on year	-0.5	0.1	0.2	0.2	-0.7	0.0	-0.1	0.2	-0.8	-0.1

1. Excludes Agriculture, Forestry and Fishing.

Source: ONS Vacancy Survey

2. Not seasonally adjusted. These series do not display seasonality. Therefore the unadjusted series is the best estimate of a 'seasonally adjusted' series.

* Change on previous non-overlapping three month rolling average time period.

Labour market statistics enquiries: labour.market@ons.gov.uk

REDUNDANCIES

23 Redundancies levels and rates¹

United Kingdom, (seasonally adjusted)

	People (aged 16 and over)		Men (aged 16 and over)		Women (aged 16 and over)	
	Level (000s) ²	Rate ¹	Level (000s) ²	Rate ¹	Level (000s) ²	Rate ¹
	BEAO	BEIR	BEIU	BEIX	BEJA	BEJD
Aug-Oct 2009	191	7.7	126	10.0	65	5.3
Aug-Oct 2010	159	6.4	99	7.8	60	4.9
Nov-Jan 2011	143	5.7	91	7.2	52	4.2
Feb-Apr 2011	116	4.6	73	5.7	43	3.5
May-Jul 2011	162	6.5	88	6.9	75	6.1
Aug-Oct 2011	161	6.5	84	6.6	77	6.3
<i>Change on quarter</i>	-1	0.0	-4	-0.2	3	0.2
<i>Change %</i>	-0.6		-4.1		3.4	
<i>Change on year</i>	2	0.1	-15	-1.2	17	1.4
<i>Change %</i>	1.3		-15.1		28.5	

Source: Labour Force Survey

Labour market statistics enquiries: labour.market@ons.gov.uk

1. The redundancy rate is the ratio of the redundancy level for the given quarter to the seasonally adjusted number of employees in the previous quarter, multiplied by 1,000.

2. The redundancies levels as derived directly from the Labour Force Survey do not currently display seasonality. For this reason series BEAO is currently identical to the not seasonally adjusted series BEYV shown at Table 24.

24 Redundancies by industry¹

United Kingdom (thousands of people aged 16 and over), not seasonally adjusted

SIC 2007 sections	Total redundancies ²	Manufacturing		Construction		Wholesale & retail trade; repair of motor vehicles and motor cycles	Transport & storage, accommodation & food service activities, information & communication	Financial & insurance and real estate activities	Prof. scientific & technical activities, admin & support service activities	Public Administration etc., education, human health and social work activities ³	Total services ⁴
		C	F	G	H,I,J						
	BEYV	JWV6	JWV7	JWV8	JWV9	JWW2	JWW3	JWW4	JWW5	JWW6	JWW7
Jul-Sep 2009	205	39	38	25	28	18	33	16	16	126	
Jul-Sep 2010	146	18	18	22	24	*	23	29	107		
Oct-Dec 2010	147	15	24	20	20	12	23	20	104		
Jan-Mar 2011	123	13	17	24	18	*	21	16	91		
Apr-Jun 2011	154	19	19	15	28	10	19	35	114		
Jul-Sep 2011	147	15	18	20	25	*	16	38	110		
<i>Change on year</i>	2	-3	0	-2	1	*	-6	9	3		
<i>Change %</i>	1.2	-17.8	2.2	-10.6	3.7	*	-28.2	29.1	2.8		

Source: Labour Force Survey

Labour market statistics enquiries: labour.market@ons.gov.uk

1. The estimates in this table are for calendar quarters only whereas the estimates at Table 23 are for rolling three-monthly time periods.

2. The total series includes those people who did not state their industry. The series also includes SIC 2007 categories A (Agriculture, forestry and fishing), B (Mining and quarrying), D (Electricity, gas, etc.) and E (Water supply, sewerage, etc.). These sectors are not shown separately in this table as the sample size is too small to provide reliable estimates. See footnote 2 at Table 23.

3. Includes both public and private sectors.

4. Other Services are not shown separately in this table as the sample size is too small to provide reliable estimates.

Benefits

25 Key out of work benefits¹

Great Britain and abroad (thousands),
not seasonally adjusted

Statistical Groups²

Number of claimants	Total ³	GB Jobseeker ^{3,4}	Employment & Support Allowance and incapacity benefits ⁵	Lone Parent ⁶	Other Income related ⁷
	J9CL	BCJG	J9CM	J9CN	J9CO
May 09	5,042.0	1,516.9	2,621.4	720.5	183.2
Aug 09	5,081.6	1,548.7	2,632.7	715.7	184.5
Nov 09	5,019.2	1,516.9	2,618.4	695.7	188.2
Feb 10	5,098.3	1,600.2	2,614.8	692.0	191.4
May 10	4,931.4	1,447.0	2,613.1	679.2	192.2
Aug 10	4,867.3	1,397.0	2,606.6	672.4	191.4
Nov 10	4,783.2	1,356.4	2,586.4	648.3	192.0
Feb 11	4,861.9	1,477.7	2,578.7	613.8	191.8
May 11	4,799.1	1,446.3	2,570.2	595.4	187.2
<i>Change on year</i>	-132.4	-0.7	-42.9	-83.8	-5.0
<i>Change %</i>	-2.7	-0.1	-1.6	-12.3	-2.6

Proportions (%) ^{8,9}	Total ³	GB Jobseeker ^{3,4}	Employment & Support Allowance and incapacity benefits ⁵	Lone Parent ⁶	Other Income related ⁷
	JVZ9	JW22	JW23	JW24	JW25
May 09	12.9	3.9	6.7	1.8	0.5
Aug 09	13.0	4.0	6.8	1.8	0.5
Nov 09	12.9	3.9	6.7	1.8	0.5
Feb 10	13.0	4.1	6.7	1.8	0.5
May 10	12.6	3.7	6.7	1.7	0.5
Aug 10	12.4	3.6	6.7	1.7	0.5
Nov 10	12.2	3.5	6.6	1.7	0.5
Feb 11	12.4	3.8	6.6	1.6	0.5
May 11	12.2	3.7	6.6	1.5	0.5
<i>Change on year</i>	-0.3	0.0	-0.1	-0.2	0.0

Source: Dept. for Work & Pensions (DWP)
Labour market statistics enquiries: labour.market@ons.gov.uk

1. This table includes the key out of work statistical groups, showing all claimants. Carers, who are not subject to labour market activation policies in the same way as other groups, are not included.
2. Claimants have been assigned to a statistical group according to a hierarchy to avoid double counting of claimants. The order is shown in the table (ie, Jobseeker followed by incapacity benefits, etc.). For example, a person claiming both incapacity benefits and Lone Parent benefit will be recorded under the former but not the latter.
3. The estimates for Jobseekers claimants shown in this table are for Great Britain (GB) and are consistent with the not seasonally adjusted estimates for the United Kingdom shown at Table 10 (Claimant Count). However the figures are different from the estimates of jobseekers claimants shown at Table 1.1 of the Dept. for Work & Pensions (DWP) Quarterly Statistical Summary. This is because of methodological differences between the Benefits estimates produced by the DWP and the Claimant Count estimates produced by the Office for National Statistics.
4. "Jobseekers" are recipients of Jobseeker's Allowance.
5. This series includes claimants of Employment and Support Allowance, Incapacity Benefit and Severe Disablement Allowance.
6. "Lone parents" are single recipients of Income Support with a child under qualifying age.
7. "Other Income related" covers recipients of Income Support or Pension Credit who are not included in "incapacity benefits" or "Lone parents".
8. Proportions of population receiving state benefits have been calculated using residence based populations for those aged 16 to 64 for both men and women. The age at which women reach state pension age has been gradually increasing from 60 since April 2010. Movements in the time series over this period will partly reflect these changing eligibility criteria.
9. The jobseekers proportions shown in this table are different from the non seasonally adjusted claimant count rate shown at Table 10 as the denominator for the latter is workforce jobs plus claimant count.