

SCIENTIFIC REPORTS



OPEN

Quantitative analysis of echogenicity for patients with thyroid nodules

Ming-Hsun Wu¹, Chiung-Nien Chen¹, Kuen-Yuan Chen¹, Ming-Chih Ho¹, Hao-Chih Tai¹, Yu-Hsin Wang², Argon Chen³ & King-Jen Chang^{1,4}

Received: 29 February 2016

Accepted: 03 October 2016

Published: 20 October 2016

Hypoechoogenicity has been described qualitatively and is potentially subject to intra- and inter-observer variability. The aim of this study was to clarify whether quantitative echoic indexes (EIs) are useful for the detection of malignant thyroid nodules. Overall, 333 participants with 411 nodules were included in the final analysis. Quantification of echogenicity was performed using commercial software (AmCAD-UT; AmCad BioMed, Taiwan). The coordinates of three defined regions, the nodule, thyroid parenchyma, and strap muscle regions, were recorded in the database separately for subsequent analysis. And the results showed that ultrasound echogenicity (US-E), as assessed by clinicians, defined hypoechoogenicity as an independent factor for malignancy. The EI, adjusted EI (EI_{N-T}; EI_{N-M}) and automatic EI_{(N-R)/R} values between benign and malignant nodules were all significantly different, with lower values for malignant nodules. All of the EIs showed similar percentages of sensitivity and specificity and had better accuracies than US-E. In conclusion, the proposed quantitative EI seems more promising to constitute an important advancement than the conventional qualitative US-E in allowing for a more reliable distinction between benign and malignant thyroid nodules.

Thyroid nodules are very common diseases¹. The clinical importance of thyroid nodules lies primarily with the possibility of thyroid cancer, which occurs in approximately 5% of all thyroid nodules^{2,3}. Among the imaging modalities, high-resolution ultrasonography (US) is the most sensitive diagnostic modality for the detection of thyroid nodules⁴. This modality has provided the possibility of distinguishing thyroid tumors and predicting their prognosis based on various ultrasound characteristics of the thyroid nodule⁵⁻⁹. However, there has been no clear consensus on the standardized terminology for thyroid US, and most of the characteristics are qualitative and subjective, making it difficult to be universally defined or applied clinically¹⁰.

Among ultrasound features, several studies have mentioned hypoechoogenicity as an important finding suggestive of malignancy^{11,12}. However, current studies have revealed that approximately 30–55% of benign nodules are also hypoechoic and most hypoechoic nodules are benign considering the high prevalence of benign lesions, thereby decreasing the usefulness of this US feature¹³⁻¹⁵. Marked hypoechoogenicity can be a more specific and more reliable criterion for a malignant thyroid nodule than hypoechoogenicity in a broader sense with a specificity of 92–94%^{15,16}. A serious concern is that ultrasound echogenicity assessed by clinicians (US-E) has been described qualitatively and is potentially subject to intra-observer and inter-observer variability⁷. Thus, a quantitative echoic value (EI) more objective and measurable is desired for clinical use.

To overcome the shortcomings of subjective judgment concerning the sonographic characteristics used in diagnosis, we have proposed computerized quantification methods to characterize the calcifications, heterogeneity and vascularity to make the diagnosis more objective¹⁷⁻¹⁹. Additionally, the aim of this study was to collect and quantify more US information; thus, quantitative echoic indexes (EIs) are proposed to study echogenicity.

Materials and Methods

Participants. The Institutional Review Board of National Taiwan University Hospital approved the prospective study, and informed consent was obtained from all of the participants. The methods were carried out in accordance with the approved guidelines. There were 353 patients with 443 thyroid nodules recruited from

¹Department of Surgery, National Taiwan University Hospital, Taipei, Taiwan. ²AmCad BioMed Corporation, Taipei, Taiwan. ³Graduate Institute of Industrial Engineering, National Taiwan University, Taipei, Taiwan. ⁴Department of Surgery, Cheng Ching General Hospital, Taichung City, Taiwan. Correspondence and requests for materials should be addressed to A.C. (email: achen@ntu.edu.tw)

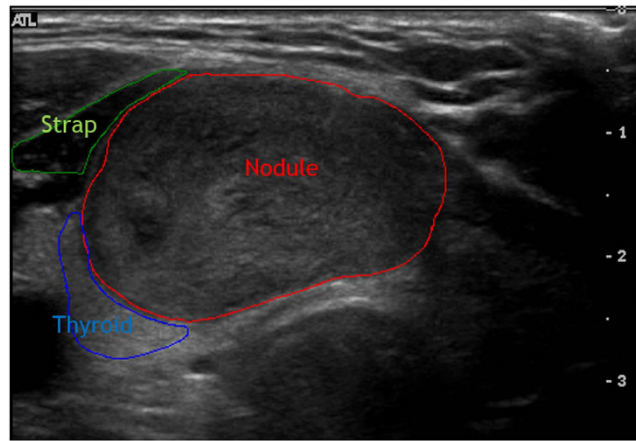


Figure 1. A representative image to delineate the regions of the nodule, thyroid, and strap muscle.

August 2007 to February 2011 who underwent thyroidectomy because of thyroid carcinoma, a suspicious thyroid nodule, follicular neoplasm or symptomatic nodular goiter diagnosed by ultrasound and fine needle aspiration cytology (FNA) results. The diagnosis results were based on the histopathological examinations of surgical specimens that were reviewed by pathologists. Those nodules with sizes larger than the array (5.2 cm) were excluded in the image assessment. Multinodular goiters without a separable nodule under ultrasound were also excluded. Therefore, 333 participants with 411 nodules participated in the final analysis.

Equipment and ultrasound procedures. All of the sonograms were acquired using a commercial ultrasound device (HDI 5000; Philips Healthcare, Bothell, WA) using a multifrequency linear probe (L12-5). The B-mode images, with the dynamic range of 170 dB, had widths equal to 5.2 cm, while the depths were at least 3.9 cm.

The procedure was performed with the participant in the supine position and the neck hyperextended. The images were captured using the maximum diameter of the nodule. Image analysis was conducted off-line using the Dicom format of images on a separate computer. Quantification of echogenicity was performed using commercial software (AmCAD-UT, AmCad BioMed., Taiwan). The analysis method using the software is described below in detail.

Analysis of echogenicity. During the analysis of ultrasound images, the boundaries of the nodules were defined by two thyroid specialists (K. Y. Chen and M. H. Wu) without knowledge of the FNA cytology or surgical pathology results. To select the references for comparison with the nodule echogenicity²⁰, the regions of the strap muscle and thyroid were also manually selected by the sonographers using computer software. The coordinates of the three defined regions, the nodule, thyroid parenchyma, and strap muscle regions, were recorded in the database separately for subsequent analysis. Examples of the images with the selected regions are shown in Fig. 1.

Next, the average gray values inside the selected regions of the nodule, thyroid and muscle, denoted as μ_{nodule} , μ_{thyroid} and μ_{muscle} , respectively, were calculated. For the nodule part, the anechoic area and hyperechoic foci, clinically deemed as the cyst area and calcifications, respectively, were removed before calculation of the average. The gray values of these pixels can be regarded as outliers based on our previous study¹⁸, and they do not contribute to the echogenicity of the nodule. The average gray value for the remaining part of the nodule (μ_{nodule}) was denoted as the echogenicity index of the nodule (EI_N). According to the literature^{15,16,21}, μ_{thyroid} and μ_{muscle} can be used as references to analyze the nodule echogenicity. The ultrasound feature of the nodule can be classified as “hypoechoogenicity” when μ_{nodule} is smaller than μ_{thyroid} or as “marked hypoechoogenicity” when μ_{nodule} is smaller than μ_{muscle} . The differences between μ_{nodule} and μ_{muscle} and between μ_{nodule} and μ_{thyroid} were recorded, respectively, to represent the adjusted EI of the nodule and were denoted as EI_{N-M} and EI_{N-T} respectively.

In addition to the comparison to the manually selected references as aforementioned, an automatic calculated reference to the nodule for the echogenicity index was provided with the commercial software. Based on the anatomic knowledge that strap muscles are located mostly in the anterior region of the neck, the anterior region is defined as the area outside the contoured nodule and above the nodule center. Moreover, only those pixels in the anterior region with a gray value smaller than the average were included and defined as the outside reference to resemble the gray level similar to that of the muscle, which is generally darker than other tissue parts. Figure 2 shows the outside references calculated using the software for the same examples of images in Fig. 1.

An indicator variable R_{ij} is defined as:

$$R_{ij} = \begin{cases} 1 & \text{if } GR_{ij} \leq L \\ 0 & \text{otherwise} \end{cases}, \quad (1)$$

where GR_{ij} is the gray value of the pixel (i, j), and L is the average of the non-zero gray values of all pixels in the anterior region. The average gray value of the outside reference (μ_{ref}) was then calculated as follows:

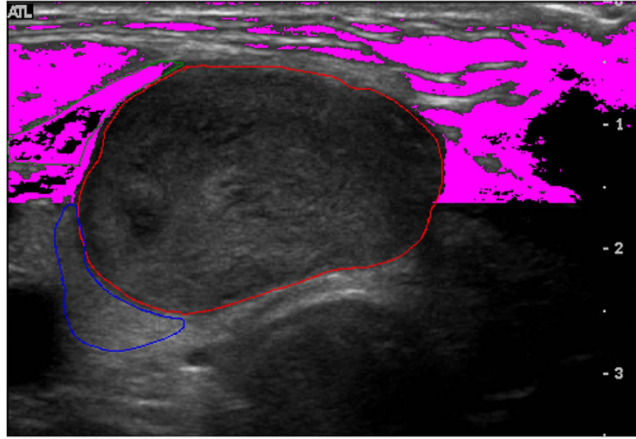


Figure 2. Autonomic references was calculated using the software for the same examples of images in Fig. 1.

$$\mu_{ref} = \frac{\sum_{i,j} R_{ij} G_{ij}}{\sum_{i,j} R_{ij}}. \quad (2)$$

Finally, the automatic EI was obtained by

$$EI_{(N-R)/R} = \frac{\mu_{nodule} - \mu_{ref}}{\mu_{ref}}, \quad (3)$$

denoted as $EI_{(N-R)/R}$, and used for further analysis.

Statistical analysis. Statistical analysis was performed using a software package (SPSS, version 12.0 for Windows; SPSS, Chicago, III.). Fisher's exact test was used for the comparisons of two binary variables, and Student's t test was used for comparisons of quantitative variables. The ultrasound features were compared with the histological diagnosis results to determine the sensitivity, specificity, negative predictive value, and positive predictive value. A p value less than 0.05 was considered to indicate statistical significance. A receiver operating characteristic curve (ROC) was also generated, and the area under the curve (AUC) was calculated to determine the diagnostic performance of the quantitative EI. In addition, multiple logistic regression analysis with significant variables in the univariate logistic regression model was performed to determine independent US predictors for malignancy from the US characteristics that showed statistical significance.

Inter-observer agreement was assessed for US characteristics using the Cohen kappa statistic. The interpretation of kappa values: 0.00–0.20 indicated slight agreement; 0.21–0.40, fair agreement; 0.41–0.60, moderate agreement; 0.61–0.80, substantial agreement; and 0.80–1.00, almost perfect agreement^{15,22}.

Results

Of the 333 patients in our study, 269 were female, and 64 were male, with an average age of 48.37 years. The oldest patient is 81 years old and youngest is 11 years old. In total, 254 of 411 (61.8%) nodules were benign (225 were nodular goiter, and 29 were follicular adenoma), and 157 of 411 (38.2%) nodules were malignant with 7 follicular thyroid cancers (FTCs), 7 medullary thyroid cancers (MTCs), 2 anaplastic thyroid cancers (ATCs), 1 lymphoma and 140 papillary thyroid cancers (PTCs).

Conventional ultrasound features of the benign and malignant nodules. For malignancy, 56.1% were smaller than 2 cm, 89.8% were US-E hypoechoic, 82.17% had an irregular margin, 43.31% had microcalcification, and 96.82% were heterogeneous. All of these ultrasound features showed significant differences between the malignant and benign tumors (Table 1).

EI values of benign and malignant nodules. The average $\mu_{thyroid}$, μ_{muscle} and μ_{ref} values were 41.31, 18.59 and 21.72, respectively. The EI_{N_T} adjusted EI (EI_{N-T} & EI_{N-M}) and automatic EI ($EI_{(N-R)/R}$) values between the benign and malignant nodules were all significantly different, with lower values for malignant nodules ($p < 0.001$, $AUC = 0.735, 0.7043$ & $0.7698; 0.77$) (Table 2).

In a univariate logistic regression analysis, either US-E hypoechoic or low EIs (cut-off set at median or zero) were statistically significant predictors of thyroid malignancy (Table 3).

US-E hypoechoic or EI_{N-T} less than zero (the same as that defined by conventional “hypoechoic”) was combined with other significant features for multiple logistic regression analysis to determine independent US predictors for malignancy. It showed that each of them (US-E defined hypoechoic or EI_{N-T} less than zero) was an independent predictor of thyroid malignancy (ORs: 3.51 and 3.69, respectively).

| Parameter | Benign Nodules (n = 254) | Malignant Nodules (n = 157) | P Value |
|------------------------------------|--------------------------|-----------------------------|---------|
| Size | | | <0001 |
| Major Diameter \geq 2 cm | 178 (70.08%) | 69 (43.95%) | |
| Major Diameter < 2 cm | 76 (29.92%) | 88 (56.05%) | |
| Side | | | 0.9007 |
| Isthmus | 5 (1.97%) | 4 (2.55%) | |
| Left | 119 (46.85%) | 75 (47.77%) | |
| Right | 130 (51.18%) | 78 (49.68%) | |
| US-E | | | <0001 |
| Hypoechoogenicity | 173 (68.11%) | 141 (89.81%) | |
| Hyperchoogenicity/Isoechoogenicity | 81 (31.89%) | 16 (10.19%) | |
| Margin | | | 0.0017 |
| Well defined | 81 (31.89%) | 28 (17.83%) | |
| Irregular | 173 (68.11%) | 129 (82.17%) | |
| Microcalcification | | | <0001 |
| Present | 46 (18.11%) | 68 (43.31%) | |
| Absent | 208 (81.89%) | 89 (56.69%) | |
| Echotexture | | | 0.016 |
| Homogeneous | 24 (9.45%) | 5 (3.18%) | |
| Heterogeneous | 230 (90.55%) | 152 (96.82%) | |

Table 1. Analysis of different US Characteristics of Benign and Malignant Thyroid Nodules.

| Parameter | Benign Nodules (n = 254) | Malignant Nodules (n = 157) | P Value |
|---------------|--------------------------|-----------------------------|---------|
| EIN | 39.84 \pm 16.23 | 27.39 \pm 14.76 | <0001 |
| Adjusted EIs | | | |
| EIN-T | -1.64 \pm 18.44 | -13.65 \pm 14.88 | <0001 |
| EIN-M | 22.45 \pm 15.41 | 6.86 \pm 15.69 | <0001 |
| Automatic EIs | | | |
| EI(N-R)/R | 1.04 \pm 0.9 | 0.22 \pm 0.71 | <0001 |

Table 2. Analysis of EIs of Benign and Malignant Thyroid Nodules.

Diagnostic performance of EIs and conventional ultrasound features. The US-E hypoechoogenicity had a sensitivity of 89.8%, specificity of 31.9% and accuracy of 54% in the diagnosis of malignant nodules. EI_{N-T} less than zero had a sensitivity of 79.6%, a specificity of 52.4% and an accuracy of 62.8%. Among EIs, EI_{N-M} less than zero, as defined by conventional “marked hypoechoogenicity”, had the highest accuracy at 70.3% (Table 4).

Agreement of the Echogenicity Characteristic of the Thyroid Nodules. Among 411 nodules in our study, there are 138 nodules with the echogenicity disagreed by US-E and EI_{N-T} . We evaluated the hypoechoogenicity as defined by the computer system (EI_{N-T} less than zero) and clinician (US-E) and showed that they had slight agreement (kappa value 0.25). The mean $|EI_{N-T}|$ in patients with disagreement for the definition of hypoechoogenicity was significantly lower than that in patients with agreement for the definition of hypoechoogenicity ($p < 0.0001$).

Because the strap muscle is thought to be a relatively consistent and reliable reference, we further classified nodules into four groups according to the quartile of the EI_{N-M} value. Figure 3 shows the prevalence of cancer in the four EI_{N-M} groups, and the prevalence of malignancy was significantly increased when the value of EI_{N-M} was decreased.

EIs with different histology. EI_{N-M} and automatic EI ($EI_{(N-R)/R}$) values with different histology are shown in Fig 4. The value was high in follicular adenoma and nodular goiter and low in PTC and FTC. There were significant differences between the follicular neoplasms including differences between follicular adenoma and carcinoma.

Discussion

We proposed a computerized method to evaluate ultrasound echogenicity quantitatively. From our study, using EI values, a statistically significant difference was observed between the benign and malignant nodules. The results of this quantitative evaluation also supported the usefulness of echogenicity in the diagnosis of thyroid nodules. To our knowledge, this is the first study to report that the quantitative measurement of ultrasound echogenicity could be a helpful approach in the diagnosis of thyroid nodules using a computerized method.

| Characteristic | beta Coefficient | Odds ratio | 95% confidence interval | P value |
|-----------------------------|------------------|------------|-------------------------|---------|
| Univariate | | | | |
| Major Diameter <2 cm | 1.094 | 2.99 | 1.97–4.52 | <0.0001 |
| US-E Hypoechoogenicity | 1.4173 | 4.13 | 2.31–7.37 | <0.0001 |
| Irregular Margin | 0.7688 | 2.16 | 1.33–3.51 | 0.002 |
| Microcalcification | 1.2396 | 3.45 | 2.21–5.41 | <0.0001 |
| Heterogenous Echotexture | 1.1544 | 3.17 | 1.19–8.49 | 0.0216 |
| EIN(less than median) | 1.7592 | 5.81 | 3.72–9.07 | <0.0001 |
| EIN-T(less than median) | 1.2091 | 3.35 | 2.2–5.1 | <0.0001 |
| EIN-M(less than median) | 1.6401 | 5.16 | 3.32–8 | <0.0001 |
| EI(N-R)/R(less than median) | 1.6906 | 5.42 | 3.49–8.44 | <0.0001 |
| EIN-T(less than zero) | 1.4571 | 4.29 | 2.71–6.8 | <0.0001 |
| EIN-M(less than zero) | 1.9319 | 6.9 | 3.81–12.5 | <0.0001 |
| EI(N-R)/R(less than median) | 1.6906 | 5.42 | 3.49–8.44 | <0.0001 |
| Mutivariate | | | | |
| Major Diameter <2 cm | 1.0615 | 2.89 | 1.84–4.54 | <0.0001 |
| US-E Hypoechoogenicity | 1.255 | 3.51 | 1.89–6.53 | <0.0001 |
| Irregular Margin | 0.3829 | 1.47 | 0.86–2.52 | 0.1641 |
| Microcalcification | 1.2353 | 3.44 | 2.11–5.6 | <0.0001 |
| Heterogenous Echotexture | 0.6845 | 1.98 | 0.67–5.88 | 0.2168 |
| Major Diameter <2 cm | 0.8452 | 2.33 | 1.47–3.7 | 0.0004 |
| EIN-T(less than zero) | 1.3062 | 3.69 | 2.24–6.09 | <0.0001 |
| Irregular Margin | 0.5469 | 1.73 | 1–2.99 | 0.0511 |
| Microcalcification | 1.1994 | 3.32 | 2.03–5.44 | <0.0001 |
| Heterogenous Echotexture | 0.8065 | 2.24 | 0.77–6.56 | 0.1414 |

Table 3. Results of Analysis of US Characteristics and EIs for Detection Malignant Thyroid Nodules.

| Characteristic | Sensitivity | Specificity | PPV | NPV | Accuracy |
|-----------------------------|-------------|-------------|--------|--------|----------|
| US-E Hypoechoogenicity | 0.8981 | 0.3189 | 0.449 | 0.8351 | 0.5401 |
| Microcalcification | 0.4331 | 0.8189 | 0.5965 | 0.7003 | 0.6715 |
| Irregular Margin | 0.8217 | 0.3189 | 0.4272 | 0.7431 | 0.5109 |
| Heterogenous Echotexture | 0.9682 | 0.0945 | 0.3979 | 0.8276 | 0.4282 |
| EIN(less than median) | 0.7516 | 0.6575 | 0.5756 | 0.8107 | 0.6934 |
| EIN-T(less than zero) | 0.7962 | 0.5236 | 0.5081 | 0.8061 | 0.6277 |
| EIN-M(less than zero) | 0.3312 | 0.9331 | 0.7536 | 0.693 | 0.7032 |
| EI(N-R)/R(less than median) | 0.7452 | 0.6496 | 0.568 | 0.8049 | 0.6861 |

Table 4. Diagnostic performance of different US Characteristics and EIs.

The prevalence of cancer in the four EI_{N-M} groups according to the quartile of the EI_{N-M} value

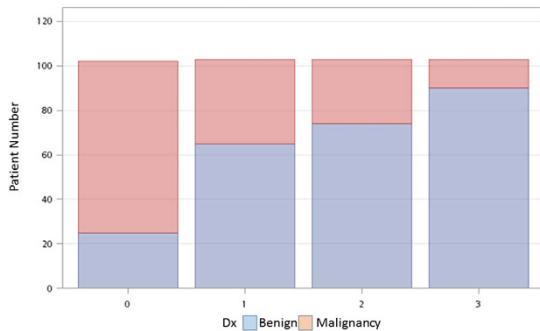


Figure 3. Nodules were classified into four groups according to the quartile of the EI_{N-M} value. It shows the prevalence of cancer in the four EI_{N-M} groups, and the prevalence of malignancy was significantly increased when the value of EI_{N-M} was decreased . (p < 0.001).

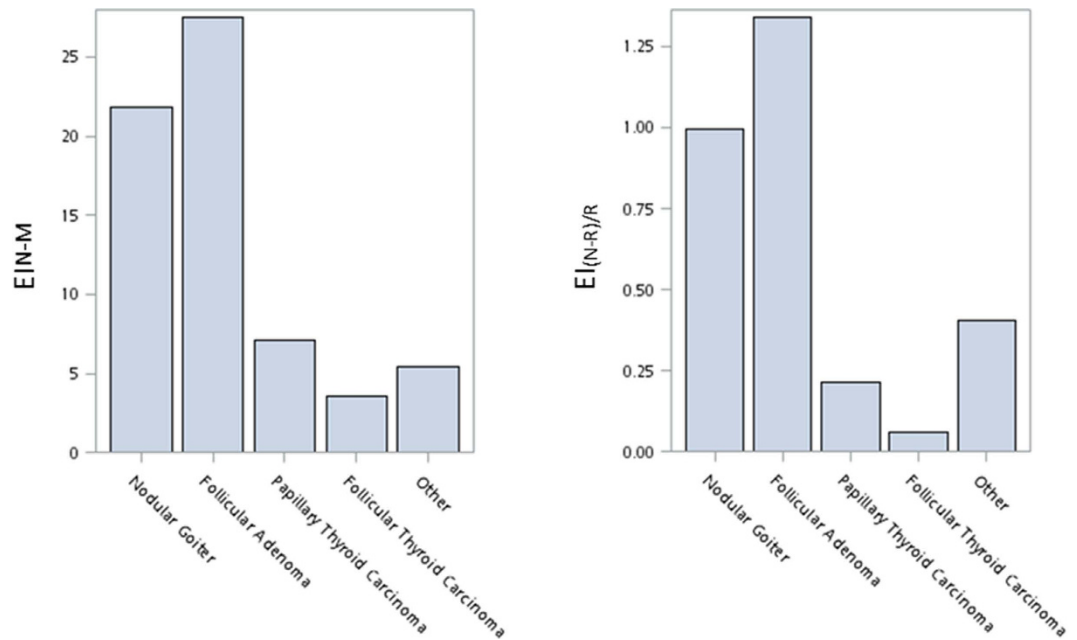


Figure 4. It shows that echogenicity index (EI_{N-M} and automatic EI ($EI_{(N-R)/R}$) values for lesions classified as nodular goiter (n = 225), follicular adenoma (n = 29), papillary thyroid cancer (n = 140), follicular thyroid cancer (n = 7), and others (medullary thyroid cancers (n = 7), anaplastic thyroid cancers (n = 2) and lymphoma (n = 1)).

The presence of microcalcifications, hypoechogenicity, irregular margins, and a solid composition with a heterogeneous pattern suggests a malignancy potential for thyroid nodules^{3,5,23,24}. However, the sensitivity and specificity of these US findings varied in the literature^{5,25}. Additionally, the problem regarding the use of these conventional US features is usually no standardized lexicon and terminology for characterization^{7,13}, leading to poor reliability for the presence of some features such as the echogenicity, pattern of composition and border^{7,26}. In addition, different qualities and levels of clinical experience and interpretation of these findings cause variable results of the diagnostic accuracy.

We found in the current study that, among the clinician-assessed features, US-E hypoechogenicity and microcalcification, rather than irregular margin and a heterogeneous pattern, were independent predictors for malignancy. Our study found that the frequency of US-E hypoechogenicity was significantly different between benign and malignant nodules, where US-E hypoechoic nodules included the majority (89.8%) of malignant nodules. Among the US markers studied, the US-E hypoechogenicity gained the highest OR. This is consistent with findings of Moon *et al.*¹⁵. Additionally, EI_{N-T} , calculated by the computer system, when less than zero, has the same meaning as traditionally defined hypoechogenicity. Furthermore, we found EI_{N-T} to be an independent predictive factor for thyroid malignancy. We double confirmed the importance of echogenicity using qualitative and quantitative methods.

Echogenicity was traditionally assessed or described by clinician judgment. Because both benign and malignant thyroid nodules exhibited a hypoechoic pattern to different degrees, it is difficult to detect subtle differences by qualitative assessment. Most US-E hypoechoic nodules are benign considering the high prevalence of benign lesions¹⁴, and the comparison of echogenicity without quantification does not provide much useful information^{7,27}.

Our EI_{N-M} , when less than zero, can be classified as the traditional term “marked hypoechogenicity”. We found that EI_{N-M} (specificity: 93%; accuracy: 70.3%; ROC: 0.7698) was a more specific and reliable criterion for the diagnosis of malignant thyroid nodules than EI_{N-T} (specificity: 52%; accuracy: 62.8%; ROC: 0.7043). This result is also consistent with those in other studies that found hypoechogenicity to be highly specific for diagnosing malignant nodules^{15,16}.

Furthermore, in the present study, because a quantitative EI_{N-M} value can be divided among different categories, we found it to be inversely correlated with the frequency of thyroid malignancy. When combined with other quantitative parameters, EI_{N-M} should improve the US characterization of nodules and help to better establish risk groups and a reporting data system for thyroid lesions in the stratification of the malignant risk of nodules^{28,29}.

Using quantitative analysis, we found that EI_{N-T} (less than zero) had better specificity and accuracy but was less sensitive than US-E hypoechogenicity, indicating that more tumors were assessed as hypoechoic by clinicians than by the computerized system. The analysis also revealed that US-E hypoechogenicity and EI_{N-T} (less than zero) showed a slight agreement. This relatively low interviewer reliability between the clinician and computerized system was consistent with the findings of previous studies^{7,15}. A smaller difference in echogenicity between μ_{module} and μ_{thyroid} (low $|EI_{N-T}|$) had a significantly higher disagreement for the definition of hypoechogenicity by the clinician and computerized system. The latter finding indicates that small subtle differences can only be

differentiated by computer systems. EI seems more operator independent and more reproducible than the subjective term of US-E.

A lower EI value implies that the nodule is hypoechoic or markedly hypoechoic on the grayscale sonography, which has been defined as a suspicious sonographic feature in several guidelines^{30,31}. It reflects the fact that a larger proportion of hypoechoic and markedly hypoechoic nodules are found in the malignant group than in the benign group. It is shown that the presence of hypoechoogenicity, represented by EI_{N-T} and US-E in this study, showed a relatively high sensitivity (79.6~89.8%) but a lower specificity (31.9~52.4%) while the presence of marked hypoechoogenicity, represented by EI_{N-M} in this study, was very specific (93.3%) but not sensitive (33.1%). EI_{N-T} and US-E, with which comparisons are made against the thyroid parenchyma, have a higher sensitivity than EI_{N-M}, with which comparisons are made against the strap muscle, because the echo level of the thyroid parenchyma is usually much higher than that of the strap muscle. The results also agree with the previous study¹⁵. As for the sensitivity difference between EI_{N-T} and US-E, it is due to the disparity of the clinician perception from the computer calculation, It can be seen that the US-E is more sensitive while the EI_{N-T} is more specific to detect the malignancy. In other words, the echo level of the nodule perceived by clinicians is easier, as compared to the objectively computerized index, to be lower than the echo level of the surrounding thyroid parenchyma. In clinical situation, the interpretation of sonograms is subjective, with the inter-observer variability being unavoidable in the sonographic assessment of thyroid nodules, and sonographic interpretation is particularly affected by how much experience an operator has¹. Operators from a single institution with different experience in thyroid imaging diagnosis have been shown to result in a significant inter-observer variability when differentiating benign and malignant thyroid nodules with grayscale sonography^{32,33}.

With the automatic selection of the outside reference by the computer system, we can also calculate the automatic EI_{(N-R)/R} with an accuracy near 70% and an AUC near 77%, consistent with the result of EI_{N-M}. Additionally, these findings suggest that manual procedures to operate the software such as selecting the ROI of reference will be more automated in the future.

Previous studies have identified certain ultrasonic features that predict follicular cancer^{34,35}. The present study indicates that there are significant differences in the EI values between follicular adenoma and carcinoma. The result hints a possible clinical application of EI to differentiate follicular neoplasms by FNA cytopathologic diagnoses. A further prospective study will be needed to confirm the finding.

This analysis of echogenicity can be easily and quickly performed within one minute. User-friendly quantification of ultrasound image echogenicity, as described in this paper, is feasible in routine clinical practice and can be used not only for diagnoses but also as a follow-up tool for a tumor.

Although the results obtained using this method for the quantitative measurement of ultrasonic echogenicity are promising, the diagnostic performance by this single feature is still not sufficiently accurate for diagnoses. It might be improved by combining it with other ultrasonic features of computerized methods. Therefore, future studies to combine the computerized EI values with other computerized ultrasonic features are needed.

In conclusion, most conventional US markers of malignancy have been proven to be significant; however, none has ensured both high sensitivity and specificity. The proposed quantitative EI seems more promising to constitute an important advancement compared with conventional qualitative US-E in allowing for a more reliable distinction between benign and malignant thyroid nodules.

References

- Filetti, S., Durante, C. & Torlontano, M. Nonsurgical approaches to the management of thyroid nodules. *Nat Clin Pract Endocrinol Metab* **2**, 384–394 (2006).
- Nam-Goong, I. S. *et al.* Ultrasonography-guided fine-needle aspiration of thyroid incidentaloma: correlation with pathological findings. *Clinical Endocrinology* **60**, 21–28 (2004).
- Papini, E. *et al.* Risk of malignancy in nonpalpable thyroid nodules: predictive value of ultrasound and color-Doppler features. *J Clin Endocrinol Metab* **87**, 1941–1946, doi: 10.1210/jcem.87.5.8504 (2002).
- American Thyroid Association Guidelines Taskforce on Thyroid, N. *et al.* Revised American Thyroid Association management guidelines for patients with thyroid nodules and differentiated thyroid cancer. *Thyroid* **19**, 1167–1214, doi: 10.1089/thy.2009.0110 (2009).
- Khoo, M. L., Asa, S. L., Witterick, I. J. & Freeman, J. L. Thyroid calcification and its association with thyroid carcinoma. *Head & neck* **24**, 651–655, doi: 10.1002/hed.10115 (2002).
- Peccin, S. *et al.* Ultrasonography: is it useful in the diagnosis of cancer in thyroid nodules? *Journal of endocrinological investigation* **25**, 39–43 (2002).
- Wienke, J. R., Chong, W. K., Fielding, J. R., Zou, K. H. & Mittelstaedt, C. A. Sonographic features of benign thyroid nodules: interobserver reliability and overlap with malignancy. *J Ultrasound Med* **22**, 1027–1031 (2003).
- Mandel, S. J. Diagnostic use of ultrasonography in patients with nodular thyroid disease. *Endocr Pract* **10**, 246–252, doi: M4G0W0FK220NDLYN [pii] (2004).
- Frates, M. C. *et al.* Prevalence and distribution of carcinoma in patients with solitary and multiple thyroid nodules on sonography. *J Clin Endocrinol Metab* **91**, 3411–3417 (2006).
- Chan, S. T., Brook, F., Ahuja, A., Brown, B. & Metreweli, C. Alteration of thyroid blood flow during the normal menstrual cycle in healthy Chinese women. *Ultrasound Med Biol* **24**, 15–20 (1998).
- Tutuncu, Y. *et al.* The frequency of malignancy and the relationship between malignancy and ultrasonographic features of thyroid nodules with indeterminate cytology. *Endocrine* **45**, 37–45, doi: 10.1007/s12020-013-9922-1 (2014).
- Kim, J. Y., Kim, S. Y. & Yang, K. R. Ultrasonographic criteria for fine needle aspiration of nonpalpable thyroid nodules 1–2 cm in diameter. *European journal of radiology* **82**, 321–326, doi: 10.1016/j.ejrad.2012.10.017 (2013).
- Cronan, J. J. Thyroid nodules: is it time to turn off the US machines? *Radiology* **247**, 602–604, doi: 10.1148/radiol.2473072233 (2008).
- Bonavita, J. A. *et al.* Pattern recognition of benign nodules at ultrasound of the thyroid: which nodules can be left alone? *AJR. American journal of roentgenology* **193**, 207–213, doi: 10.2214/AJR.08.1820 (2009).
- Moon, W. J. *et al.* Benign and malignant thyroid nodules: US differentiation—multicenter retrospective study. *Radiology* **247**, 762–770, doi: 10.1148/radiol.2473070944 (2008).
- Kim, E. K. *et al.* New sonographic criteria for recommending fine-needle aspiration biopsy of nonpalpable solid nodules of the thyroid. *AJR. American journal of roentgenology* **178**, 687–691, doi: 10.2214/ajr.178.3.1780687 (2002).

17. Chen, K. Y. *et al.* Computerized quantification of ultrasonic heterogeneity in thyroid nodules. *Ultrasound Med Biol* **40**, 2581–2589, doi: 10.1016/j.ultrasmedbio.2014.06.009 (2014).
18. Chen, K. Y. *et al.* Computerized detection and quantification of microcalcifications in thyroid nodules. *Ultrasound Med Biol* **37**, 870–878, doi: S0301-5629(11)00137-2 [pii] b10.1016/j.ultrasmedbio.2011.03.002 (2011).
19. Wu, M. H. *et al.* Quantitative analysis of dynamic power Doppler sonograms for patients with thyroid nodules. *Ultrasound Med Biol* **39**, 1543–1551, doi: 10.1016/j.ultrasmedbio.2013.03.009 (2013).
20. Moon, W. J. *et al.* Ultrasonography and the ultrasound-based management of thyroid nodules: consensus statement and recommendations. *Korean journal of radiology* **12**, 1–14, doi: 10.3348/kjr.2011.12.1.1 (2011).
21. Smith-Bindman, R. *et al.* Risk of thyroid cancer based on thyroid ultrasound imaging characteristics: results of a population-based study. *JAMA internal medicine* **173**, 1788–1796, doi: 10.1001/jamainternmed.2013.9245 (2013).
22. Landis, J. R. & Koch, G. G. The measurement of observer agreement for categorical data. *Biometrics* **33**, 159–174 (1977).
23. Brito, J. P. *et al.* The accuracy of thyroid nodule ultrasound to predict thyroid cancer: systematic review and meta-analysis. *J Clin Endocrinol Metab* **99**, 1253–1263, doi: 10.1210/jc.2013-2928 (2014).
24. Alexander, E. K. *et al.* Thyroid nodule shape and prediction of malignancy. *Thyroid: official journal of the American Thyroid Association* **14**, 953–958, doi: 10.1089/thy.2004.14.953 (2004).
25. Frates, M. C. *et al.* Management of thyroid nodules detected at US: Society of Radiologists in Ultrasound consensus conference statement. *Radiology* **237**, 794–800, doi: 10.1148/radiol.2373050220 (2005).
26. Park, S. H. *et al.* Interobserver agreement in assessing the sonographic and elastographic features of malignant thyroid nodules. *AJR Am J Roentgenol* **193**, W416–W423, doi: 10.2214/AJR.09.2541 (2009).
27. Iannuccilli, J. D., Cronan, J. J. & Monchik, J. M. Risk for malignancy of thyroid nodules as assessed by sonographic criteria: the need for biopsy. *Journal of ultrasound in medicine: official journal of the American Institute of Ultrasound in Medicine* **23**, 1455–1464 (2004).
28. Park, J. Y. *et al.* A proposal for a thyroid imaging reporting and data system for ultrasound features of thyroid carcinoma. *Thyroid* **19**, 1257–1264, doi: 10.1089/thy.2008.0021 (2009).
29. Horvath, E. *et al.* An ultrasonogram reporting system for thyroid nodules stratifying cancer risk for clinical management. *J Clin Endocrinol Metab* **94**, 1748–1751, doi: 10.1210/jc.2008-1724 (2009).
30. Pitoia, F. & Miyauchi, A. 2015 American Thyroid Association Guidelines for Thyroid Nodules and Differentiated Thyroid Cancer and Their Implementation in Various Care Settings. *Thyroid* **26**, 319–321, doi: 10.1089/thy.2015.0530 (2016).
31. Gharib, H. *et al.* American Association of Clinical Endocrinologists, American College of Endocrinology, and Associazione Medici Endocrinologi Medical Guidelines for Clinical Practice for the Diagnosis and Management of Thyroid Nodules—2016 Update. *Endocr Pract* **22**, 622–639, doi: 10.4158/EP161208.GL (2016).
32. Park, C. S. *et al.* Observer variability in the sonographic evaluation of thyroid nodules. *J Clin Ultrasound* **38**, 287–293, doi: 10.1002/jcu.20689 (2010).
33. Choi, S. H., Kim, E. K., Kwak, J. Y., Kim, M. J. & Son, E. J. Interobserver and intraobserver variations in ultrasound assessment of thyroid nodules. *Thyroid* **20**, 167–172, doi: 10.1089/thy.2008.0354 (2010).
34. Lee, S. H. *et al.* Predictive factors of malignancy in thyroid nodules with a cytological diagnosis of follicular neoplasm. *Endocrine pathology* **24**, 177–183, doi: 10.1007/s12022-013-9263-x (2013).
35. Pompili, G. *et al.* Management of thyroid follicular proliferation: an ultrasound-based malignancy score to opt for surgical or conservative treatment. *Ultrasound in medicine & biology* **39**, 1350–1355, doi: 10.1016/j.ultrasmedbio.2013.02.464 (2013).

Acknowledgements

We acknowledge the statistical assistance provided by the Taiwan Clinical Trial Statistical Center, Training Center, and Pharmacogenomics Laboratory (founded by the National Research Program for Biopharmaceuticals (NRPB) at the Ministry of Science and Technology of Taiwan; MOST 104-2325-B-002-032). We acknowledge the Department of Medical Research in National Taiwan University Hospital.

Author Contributions

M.-H.W., C.-N.C., K.-Y.C., M.-C.H., H.-C.T., A.C. and K.-J.C. planned and developed the experiments; M.-H.W. and K.-Y.C. performed the ultrasound; Quantification of echogenicity was performed by Y.-H.W. and A.C. M.-H.W., C.-N.C. and A.C. managed the project and wrote the paper.

Additional Information

Competing financial interests: The authors declare no competing financial interests.

How to cite this article: Wu, M.-H. *et al.* Quantitative analysis of echogenicity for patients with thyroid nodules. *Sci. Rep.* **6**, 35632; doi: 10.1038/srep35632 (2016).



This work is licensed under a Creative Commons Attribution 4.0 International License. The images or other third party material in this article are included in the article's Creative Commons license, unless indicated otherwise in the credit line; if the material is not included under the Creative Commons license, users will need to obtain permission from the license holder to reproduce the material. To view a copy of this license, visit <http://creativecommons.org/licenses/by/4.0/>

© The Author(s) 2016