

SCIENTIFIC REPORTS



OPEN

Age and gender specific estimation of visceral adipose tissue amounts from radiological images in morbidly obese patients

Received: 26 October 2015

Accepted: 10 February 2016

Published: 24 March 2016

Nicolas Linder^{1,2,*}, Alexander Schaudinn^{1,2,*}, Nikita Garnov^{1,2}, Matthias Blüher^{2,3}, Arne Dietrich^{2,4}, Tatjana Schütz^{2,4}, Stefanie Lehmann², Ulf Retschlag², Thomas Karlas^{2,5}, Thomas Kahn¹ & Harald Busse¹

Image-based quantifications of visceral adipose tissue (VAT) volumes from segmented VAT areas are increasingly considered for risk assessment in obese patients. The goal of this study was to determine the power of partial VAT areas to predict total VAT volume in morbidly obese patients (BMI > 40 kg/m²) as a function of gender, age and anatomical landmarks. 130 morbidly obese patients (mean BMI 46.5 kg/m²; 94 females) underwent IRB-approved MRI. Total VAT volumes were predicted from segmented VAT areas (of single or five adjacent slices) at common axial landmark levels and compared with the measured ones ($V_{\text{VAT-T}}$, about 40 slices between diaphragm and pelvic floor). Standard deviations σ_1 and σ_5 of the respective VAT volume differences served as measures of agreement. Mean $V_{\text{VAT-T}}$ was 4.9 L for females and 8.1 L for males. Best predictions were found at intervertebral spaces L3-L4 for females ($\sigma_5 = 688$ ml, $\sigma_1 = 832$ ml) and L1-L2 for males ($\sigma_5 = 846$ ml, $\sigma_1 = 992$ ml), irrespective of age. In conclusion, VAT volumes in morbidly obese patients can be reliably predicted by multiplying the segmented VAT area at a gender-specific lumbar reference level with a fixed scaling factor and effective slice thickness.

Obesity is a worldwide increasing healthcare problem. In the United States, for example, over two thirds of the adult population are either overweight (33%, BMI: 25–30 kg/m²), obese (35%, 30–40 kg/m²) or morbidly obese (6%, > 40 kg/m²)¹. While prevalence of obesity is still rising, in particular the morbid form², more and more is known about its association with an increased overall mortality, often caused by cardiovascular diseases, diabetes or hypertension^{3,4}.

Visceral adipose tissue (VAT) on the other hand, through its role as an active endocrine tissue, has been considered to be the most dyslipidemic and atherogenic fat depot in the human body^{5,6}. There is a considerable interest to identify robust markers that allow one to clinically assess risk factors for obesity and monitor related therapeutic interventions. The amount of VAT is one of the currently most promising parameters in that respect.

Quantification of abdominal VAT volumes by cross-sectional imaging, typically by computed tomography (CT) or magnetic resonance imaging (MRI), however, is generally time-consuming^{7–9}. Various methods have already been proposed to estimate total VAT volumes from simple measurements on a limited number of slices. Studies using single or five slice VAT areas for VAT volume prediction have mainly focused on patients with BMI values below 40 kg/m² and data for the morbidly obese are lacking^{10–16}.

The goal of this study was therefore to assess the predictive power of simple VAT areas at various anatomical landmarks and to determine the potential impact of cofactors gender and age in a relatively large number of

¹Department of Diagnostic and Interventional Radiology, Leipzig University Hospital, Liebigstrasse 20, Leipzig, Germany. ²Integrated Research and Treatment Center (IFB) Adiposity Diseases, Leipzig University Medical Center, Leipzig, Germany. ³Department of Internal Medicine, Neurology and Dermatology, Division of Endocrinology and Nephrology, Leipzig University Hospital, Leipzig, Germany. ⁴Department of Visceral, Transplantation, Thoracic and Vascular Surgery, Division of Bariatric Surgery, Leipzig University Hospital, Leipzig, Germany. ⁵Department of Internal Medicine, Neurology and Dermatology, Division of Gastroenterology and Rheumatology, Leipzig University Hospital, Leipzig, Germany. *These authors contributed equally to this work. Correspondence and requests for materials should be addressed to H.B. (email: harald.busse@medizin.uni-leipzig.de)

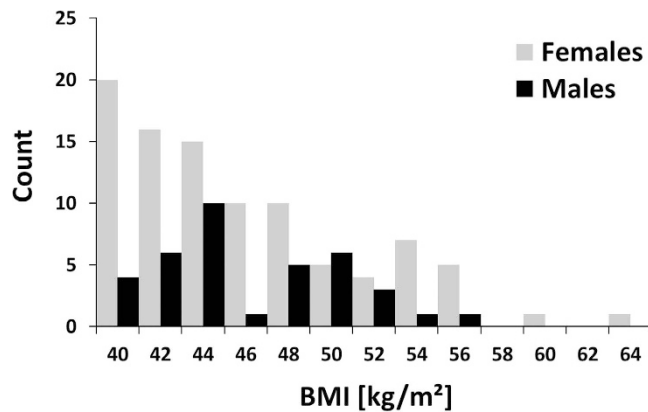


Figure 1. Histogram of BMI distribution for females and males. Mean BMI values were 46.4 ± 5.4 (40.3–64.1) kg/m^2 and 46.6 ± 4.3 (range 40.1–57.0) kg/m^2 , respectively.

morbidly obese patients. This work also reports corresponding scaling factors for VAT volume prediction from simple VAT areas that might be valuable for further clinical studies.

Materials and Methods

Study population. 130 morbidly obese patients (18.6–70.7 years old, Caucasian), consisting of 94 females with a mean BMI of 46.4 (range, 40.3–64.1) kg/m^2 and 36 males with a mean BMI of 46.6 (range, 40.1–57.0) kg/m^2 , were recruited from a dedicated hospital-wide research and treatment program on obesity. Data collection, analysis and publication were approved by the Institutional Review Board (IRB) of the Leipzig University Faculty of Medicine, Leipzig, Germany (reference numbers 283/11-ff, 284/10-ff, 363/10-ff, 363/11-ff) and informed consent was obtained from all subjects. Methods were carried out in accordance with the approved guidelines. Demographic parameters age, weight, height and BMI can be found in Supplementary Table S1. The distribution of BMI values is illustrated in Fig. 1 for both genders.

Magnetic Resonance Imaging. Patients were examined in a 1.5-T MRI scanner (Achieva XR, Philips Healthcare, Best, Netherlands) in supine position, using the whole-body coil and a two-point Dixon sequence. Data were acquired in two contiguous stacks of 25 images between pelvic floor and diaphragm using a breath-hold technique to reduce motion artefacts. Other imaging parameters were: slice thickness 10 mm, interslice gap 0.5 mm, repetition time $TR = 76$ ms, echo times $TE = 2.3$ and 4.6 ms, flip angle = 70° , field of view = $530 \text{ mm} \times 530 \text{ mm}$, acquisition matrix = 216×177 , reconstruction matrix = 480×480 , total acquisition time $TA = 10 \times 13$ seconds plus breathing intervals.

Image Analysis. MRI data were analysed on a standard PC (Dual-Core CPU, 2.60 GHz, 3.25 GB RAM). Total VAT volume ($V_{\text{VAT-T}}$) was quantified between pelvic floor and diaphragm¹⁷ using a custom-made, previously described software tool under MATLAB (MathWorks, Natick, MA, USA)⁹. In short, VAT boundaries were segmented automatically in the opposed-phase images and edited manually by two experienced radiology residents where corrections were deemed necessary (Fig. 2a). The histogram of the MRI signal intensities (SI) is computed for each slice and typically shows two distinct peak regions resulting from non-fat and fat tissue contributions with a local minimum in between (Fig. 2b). In a previous analysis of our MRI data¹³, best visual agreement between histogram-based (mask) and anatomical fat regions was often observed (by an expert medical reader) for threshold positions some distance away (towards the “fat peak”) from that minimum. The default SI threshold for the separation of fat from not-fat pixels was therefore set half way between local minimum and “fat peak”. This threshold was manually adjusted whenever the colour overlay of the corresponding VAT mask (Fig. 2c) did not match sufficiently well with the anatomical features. Total VAT volume ($V_{\text{VAT-T}}$) was calculated from the segmented VAT areas by multiplying the respective pixel count with the pixel area and with the effective slice thickness.

VAT areas of single or five contiguous axial slices ($A_{\text{VAT-1}}$ or $A_{\text{VAT-5}}$), centered at specific anatomic landmarks, were considered as potential predictors of $V_{\text{VAT-T}}$. The landmarks consisted of five intervertebral spaces between L1 and S1 (L1-L2 to L4-L5 and L5-S1), the umbilicus (UM) as well as the femoral heads (FH) (Fig. 2d). For five-slice analysis, four additional slices were selected symmetrically around the anatomical level of the single-slice approach, except for the femoral head level where all slices were placed above the actual anatomic landmark.

Single-slice VAT areas and summed ones (over five adjacent slices) were then plotted against $V_{\text{VAT-T}}$ for each anatomical landmark and a linear fit through the origin was performed defining specific slopes that can then be taken as fixed scaling or conversion factors f_1 or f_5 . For a given number of slices (and a specific landmark), total VAT volumes can then be simply estimated from measured VAT areas according to the following equations:

$$V_{\text{VAT-1}} = A_{\text{VAT-1}} \cdot ST \cdot 1/f_1 \quad (1)$$

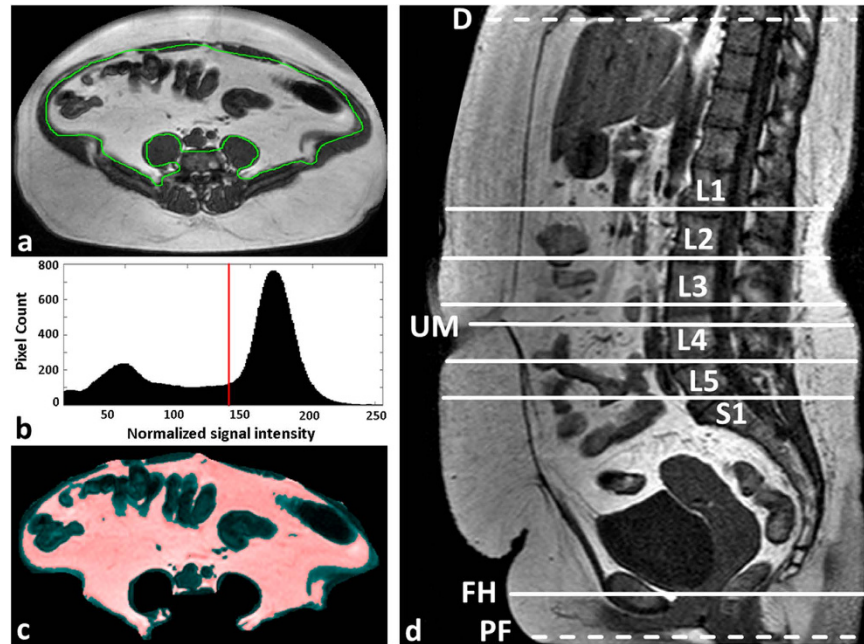


Figure 2. Semi-automated quantification of VAT volume. (a) Automatic segmentation and manual correction of the VAT contour (green). (b) Histogram of normalized MRI signal intensities (SI) of all pixels within the VAT ROI. All pixels with SI above the predefined but adjustable threshold (red line, typically between lean and fat peaks) are considered as VAT. (c) MR image of ROI with VAT pixels overlaid semi-transparently in red. (d) Quantitative VAT areas A_{VAT} were assessed on axial MRI slices at the following reference positions (landmarks): umbilicus (UM), femoral heads (FH), and intervertebral discs L1-L2, L2-L3, L3-4, L4-5 and L5-S1. Total VAT volume (V_{VAT}) was analysed between pelvic floor (PF) and diaphragm (D).

$$V_{\text{VAT-5}} = A_{\text{VAT-5}} \cdot \text{ST} \cdot 1/f_5 \quad (2)$$

where $A_{\text{VAT-1}}$ and $A_{\text{VAT-5}}$ are the measured VAT areas (in one and five slices, respectively), ST is the effective slice thickness (nominal slice thickness plus interslice gap), f_1 and f_5 are the above scaling factors and $V_{\text{VAT-1}}$ and $V_{\text{VAT-5}}$ are the estimated total VAT volumes.

Potential variation of the results with age was addressed by restricting the analysis to three nearly equally sized subgroups for each gender. This resulted in different cut-off ages between male (Group I: < 40.4 years, $n = 12$, Group II: 41.3–51.3 years, $n = 12$, and Group III: > 51.3 years, $n = 12$) and female subgroups (Group I: < 39.2 years, $n = 31$, Group II: 39.6 – 50.8 years, $n = 32$, and Group III: > 50.9 years, $n = 31$).

Statistical Analysis. Statistical measures of agreement were the coefficient of determination R^2 of a linear fit through the origin and the standard deviations σ_1 or σ_5 of the differences between volume predictions $V_{\text{VAT-1}}$ or $V_{\text{VAT-5}}$ and actual $V_{\text{VAT-T}}$ (Bland-Altman analysis). Correlation between BMI and total VAT volume was analysed with Pearson's correlation coefficient r . All statistical analyses were performed using SPSS 18 (Chicago, IL). Statistical P values under 0.05 were considered to be significant.

Results

Total VAT volumes ($V_{\text{VAT-T}}$), single and five-slice VAT areas ($A_{\text{VAT-1}}$ or $A_{\text{VAT-5}}$) could be determined for all patients and reference points. $V_{\text{VAT-T}}$ values in males were significantly higher compared to females (8.1 ± 3.1 ; range 3.6–15.0 L compared to 4.9 ± 1.7 ; range 1.4–10.2 L). The correlation between BMI and total VAT volume $V_{\text{VAT-T}}$ was poor for both females (Pearson's $r = 0.196$, $P = 0.06$) and males (Pearson's $r = 0.392$, $P < 0.05$).

A gender-specific distribution of single-slice VAT areas ($A_{\text{VAT-1}}$) across the whole study population is illustrated in Fig. 3 for different axial heights h_{ref} relative to the reference position at intervertebral space L3-L4 (positive values for more cranial positions). Largest median VAT areas were found at $h_{\text{ref}} = -1.05$, 1.05 and 2.10 cm in females and, more cranial, at $h_{\text{ref}} = 3.15$, 4.20 and 7.35 cm in males (non-integer values caused by interslice gap of 0.5 mm).

Coefficients of determination (R^2) between reference $V_{\text{VAT-T}}$ and VAT areas ($A_{\text{VAT-1}}$ or $A_{\text{VAT-5}}$) ranged from 0.48 to 0.90 for males and from 0.44 to 0.89 for females (shown in Supplementary Table S2). Highest values for single-slice estimates were observed at L1-L2 ($R^2 = 0.90$) in men and at L3-L4 ($R^2 = 0.87$) in women. Agreement for five-slice estimates was generally better with highest values again at L1-L2 in men ($R^2 = 0.93$) and at L3-L4 in women ($R^2 = 0.89$). Sample linear fits through the origin are shown in Fig. 4 for both genders.

Gender-specific scaling factors f between $A_{\text{VAT-1}}$ or $A_{\text{VAT-5}}$ areas and measured $V_{\text{VAT-T}}$ at the respective optimum positions were roughly 15% higher for females (one slice: 0.045 vs. 0.039; five slices: 0.222 vs. 0.194). Specific VAT

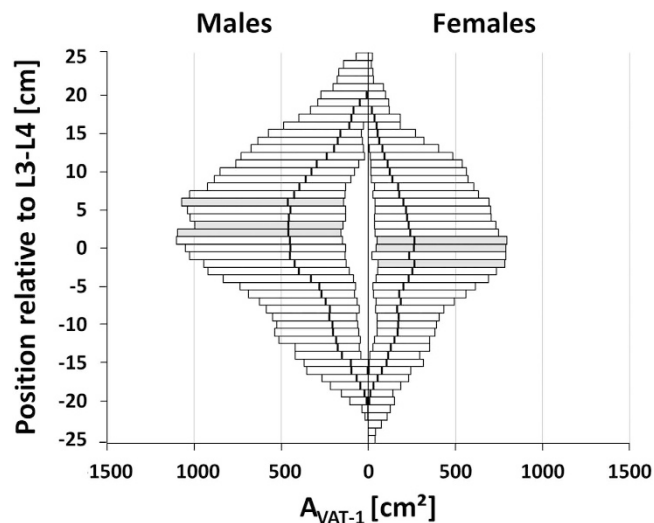


Figure 3. Distribution of visceral fat areas A_{VAT-1} for males (left) and females (right), across all subjects as a function of the axial height h_{ref} relative to the reference position at intervertebral space L3-L4 (positive values for more cranial positions). Bars indicate the range between minimum (MIN) and maximum (MAX) A_{VAT-1} values; the bold vertical lines are the median values (MED). Single slice positions with largest median VAT areas are highlighted in gray (females: $h_{ref} = -1.05, 1.05$ and 2.1 cm; males: $h_{ref} = 3.15, 4.20$ and 7.35 cm).

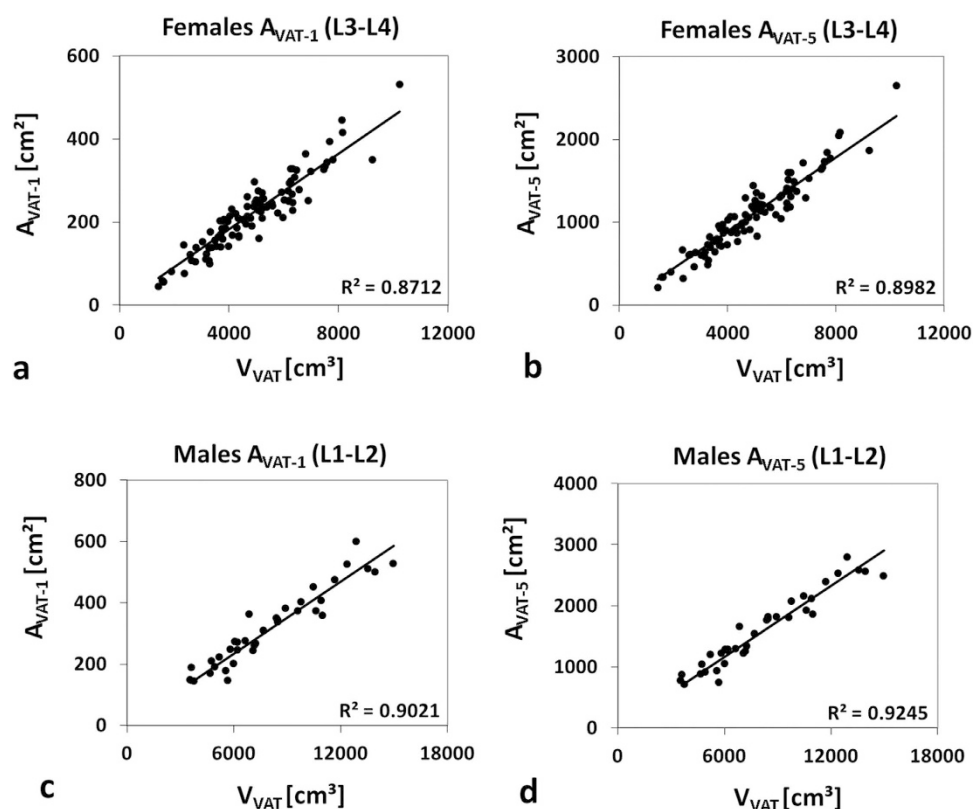


Figure 4. Illustration of (best) agreement between total VAT volume (V_{VAT}) and segmented VAT areas (A_{VAT-1} and A_{VAT-5}). Solid lines represent linear fits through origin. Best agreement was found in females (a,b) and males (c,d) at intervertebral levels L3-L4 and L1-L2, respectively. A_{VAT-5} showed slightly better agreement than A_{VAT-1} in both genders.

areas (A_{VAT-1} or A_{VAT-5}) may then be converted to VAT volume estimates (V_{VAT-1} or V_{VAT-5}). Supplementary Fig. S3 shows an example for a substantial VAT difference between two patients with the same BMI.

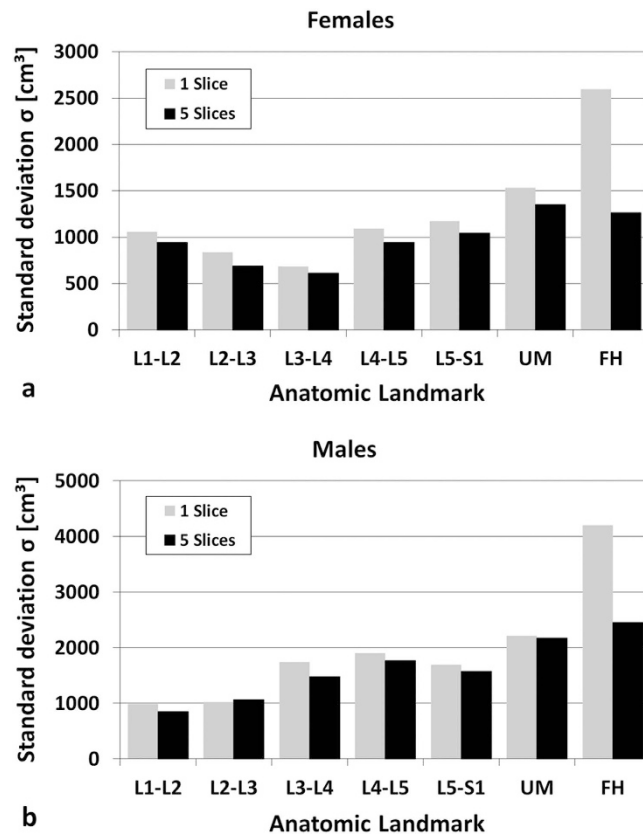


Figure 5. Standard deviations [cm³] σ_1 (gray) and σ_5 (black) of the differences between measured (V_{VAT-T}) and estimated VAT volumes (V_{VAT-1} and V_{VAT-5}), at predefined anatomic reference positions for females (a) ($n = 94$) and males (b) ($n = 36$).

Bland-Altman analysis revealed mean VAT differences (bias) between -89 and $+260$ ml for males and between -82 and $+126$ ml for females. As an example, Supplementary Fig. S4 shows two Bland-Altman plots for VAT estimation by five slices around the umbilical and the optimum lumbar level (L3-L4) in females.

Standard deviations of the differences between measured (V_{VAT}) and estimated VAT volumes (V_{VAT-1} and V_{VAT-5}) are shown in Fig. 5. Standard deviations σ_1 ranged from 685 to 2,595 ml in females and from 989 to 4,204 ml in males while σ_5 values ranged from 611 ml to 1,352 ml and from 850 ml to 2,452 ml, respectively. Accuracies varied with anatomical level and showed best agreement at L1-L2 for males with $\sigma_5(L1-L2) = 850$ ml and $\sigma_1(L2-L3) = 989$ ml. Minimal standard deviation in females was found at L3-L4 with $\sigma_5(L3-L4) = 611$ ml and $\sigma_1(L3-L4) = 685$ ml. Values of σ_5 were generally smaller than σ_1 , except for level L2-L3 in males. Quantitative agreement at the umbilical level was poor ($\sigma_1 = 2,225$ and $\sigma_5 = 2,186$ ml in males; $\sigma_1 = 1,533$ ml and $\sigma_5 = 1,352$ ml in females). Largest standard deviations were found at the femoral heads for both settings.

Analysis of three equally sized subgroups showed no major variation of either σ , R^2 or f values with age (shown in Supplementary Table S5). The lowest σ values of all age groups were again observed at L3-L4 in females. For single slice analysis in males, subgroups I and II (<51.3 years) showed the smallest σ value at L2-L3, slightly lower than that at L1-L2.

Discussion

We have described and validated a clear-cut method to estimate VAT volumes from segmented VAT areas of a limited number of axial images in morbidly obese patients (mean BMI: 46.6 kg/m²). Similar to previous results in less obese patients¹⁰⁻¹⁶, best agreement was generally observed for intervertebral spaces above L4-L5 and also depended on gender (here L3-L4 in females and L1-L2 in males). Maislin *et al.*¹⁰ and Demerath *et al.*¹¹, in contrast, did not find any gender effect in their cohorts.

Besides the differences seen between genders, the optimum reference also seems to depend on the degree of obesity (BMI range). While previous data in male patients with BMIs between 25 and 40 kg/m² showed best correlations at L2-L3¹⁵, the present study suggests a more cranial level (L1-L2) for morbidly obese patients. In females, VAT areas at L3-L4 best predicted total VAT volumes independent of BMI. Both gender and BMI group should therefore be considered for reliable estimation of total VAT volumes.

The slight axial offset between both genders is most likely attributable to a difference in average body shape showing the bulk of the visceral fat at more cranial positions in males (Fig. 3). The higher accuracy could then be simply explained by the larger VAT fraction that is used for computation. In cases, where a gender-specific analysis in morbidly obese patients is not feasible, a single (common) reference might be needed which would

then be L2-L3. While this choice will only be second best, the corresponding penalties in accuracy appear to be acceptable.

Anatomic landmarks like the umbilicus or femoral heads provided only poor estimates of VAT volumes. Standard deviations, in particular at the femoral head level were almost twice as large. For the umbilical level, this could be caused by the large positional variation between subjects with respect to skeletal landmarks. For the femoral head level, findings are most likely explained by the relative small VAT amounts in the pelvic cavity that are less representative for the entire VAT volume. Our results agree well with previous ones in overweight to severely obese patients¹³ but disagree with findings by Schwenzer *et al.*¹⁴ who found relatively strong correlations at the umbilical level. This incoherence can be attributed to the underlying BMI difference (46.6 ± 5.1 here vs. 29.7 ± 5.2 kg/m² in their group) and a different patient position during examination (prone vs. supine).

Analyses within three age subgroups essentially confirmed the gender-specific references found overall. Therefore, we do not see a need for age-specific analyses which is also in line with findings in less obese patients¹³.

The extension to five slices yielded slightly better accuracies at the same best and second-best landmarks which can be simply explained by the larger amount of information contained. A previous five-slice approach in obese adolescents by Springer *et al.*¹⁵, in contrast, worked reliably for females only and also showed no improvement over single slices. Possible explanations for this incoherence could be a different choice of reference levels (umbilicus and femoral heads vs. intervertebral spaces) or the relatively small number of subjects ($n = 40$; 22 males).

Correlation of BMI with total VAT volume (both from CT or MRI) is generally poor^{14,18–20} mainly because VAT constitutes a much smaller fraction to total adipose tissue than SAT, for example, an average of only 4% (females) and 12% (males) in a recent study of 142 patients²¹. The relatively low correlation coefficients (Pearson's r) computed for our patients (0.32 for females and 0.19 for males) clearly underline the need for dedicated VAT measurements²².

Our study focussed on morbidly obese patients with a mean BMI of roughly 47 kg/m² (range 40–64 kg/m²). Maislin *et al.*¹⁰ have partially included such patients for analysis with a maximum BMI of 51.2 kg/m² but a median BMI of 32.5 kg/m² only. Our work provides gender-specific scaling factors f for two different slice numbers (1 and 5) and seven common landmarks that can be interpreted as the fraction of the partial slice volumes to the whole abdominal VAT. These factors do not depend on the specific slice thickness and can therefore be easily used by other researchers and clinicians.

One limitation is the retrospective, single-centre design of our study which was effectively determined by the IRB approval of the underlying clinical studies. Our higher number of females simply reflects the percentage upon recruitment and findings in males should therefore be interpreted slightly more carefully than those in females. Although the BMI range studied here makes up a smaller part of the overall population only¹, those patients are more likely to benefit from a reliable assessment of the risk factors and subsequent treatment. Slice-based VAT assessment is becoming an important diagnostic tool for risk stratification^{23,24} but has also been considered for VAT monitoring under various interventions^{25–28}, albeit with less success.

In conclusion, our data in morbidly obese patients suggest that VAT areas should generally be measured at axial heights above L4-L5 (in line with findings in less obese patients), preferentially centered around L3-L4 in females and L1-L2 in males. Umbilical or femoral head levels should not be considered (in neither BMI group). The second-best common reference for both genders was L2-L3. Higher BMI values in males seem to shift that level cranially (from L2-L3 to L1-L2) while that in females remained at L3-L4. We could not identify substantial differences with age but found that the analysis of more than one slice (here 5) will yield slightly better VAT measures. We believe that these findings have a high practical value and may also encourage more clinical work on the role of VAT in obesity, not only for morbid forms of the disease.

References

- Ogden, C. L., Carroll, M. D., Kit, B. K. & Flegal, K. M. Prevalence of childhood and adult obesity in the United States, 2011–2012. *JAMA* **311**, 806–814 (2014).
- Sturm, R. & Hattori, A. Morbid obesity rates continue to rise rapidly in the United States. *Int. J. Obes.* **2005** **37**, 889–891 (2013).
- Kitahara, C. M. *et al.* Association between class III obesity (BMI of 40–59 kg/m²) and mortality: a pooled analysis of 20 prospective studies. *PLoS Med.* **11**, e1001673 (2014).
- Flegal, K. M., Kit, B. K., Orpana, H. & Graubard, B. I. Association of all-cause mortality with overweight and obesity using standard body mass index categories: a systematic review and meta-analysis. *JAMA* **309**, 71–82 (2013).
- Bergman, R. N. *et al.* Why visceral fat is bad: mechanisms of the metabolic syndrome. *Obesity* **14**, 16S–19S (2006).
- Després, J.-P. & Lemieux, I. Abdominal obesity and metabolic syndrome. *Nature* **444**, 881–887 (2006).
- Machann, J. *et al.* Standardized assessment of whole body adipose tissue topography by MRI. *J. Magn. Reson. Imaging* **21**, 455–462 (2005).
- Armao, D., Guyon, J.-P., Firat, Z., Brown, M. A. & Semelka, R. C. Accurate quantification of visceral adipose tissue (VAT) using water-saturation MRI and computer segmentation: preliminary results. *J. Magn. Reson. Imaging* **23**, 736–741 (2006).
- Thörmer, G. *et al.* Software for automated MRI-based quantification of abdominal fat and preliminary evaluation in morbidly obese patients. *J. Magn. Reson. Imaging* **37**, 1144–1150 (2013).
- Maislin, G. *et al.* Single slice vs. volumetric MR assessment of visceral adipose tissue: reliability and validity among the overweight and obese. *Obesity* **20**, 2124–2132 (2012).
- Demerath, E. W. *et al.* Approximation of total visceral adipose tissue with a single magnetic resonance image. *Am. J. Clin. Nutr.* **85**, 362–368 (2007).
- Shen, W. *et al.* Visceral adipose tissue: relations between single-slice areas and total volume. *Am. J. Clin. Nutr.* **80**, 271–278 (2004).
- Schaudinn, A. *et al.* Predictive accuracy of single- and multi-slice MRI for the estimation of total visceral adipose tissue in overweight to severely obese patients: MRI prediction of visceral fat volumes. *NMR Biomed.* **28**, 583–590 (2015).
- Schwenzer, N. F. *et al.* Quantitative analysis of adipose tissue in single transverse slices for estimation of volumes of relevant fat tissue compartments: a study in a large cohort of subjects at risk for type 2 diabetes by MRI with comparison to anthropometric data. *Invest. Radiol.* **45**, 788–794 (2010).
- Springer, F. *et al.* Predicting volumes of metabolically important whole-body adipose tissue compartments in overweight and obese adolescents by different MRI approaches and anthropometry. *Eur. J. Radiol.* **81**, 1488–1494 (2012).

16. Irlbeck, T. *et al.* Association between single-slice measurements of visceral and abdominal subcutaneous adipose tissue with volumetric measurements: the Framingham Heart Study. *Int. J. Obes.* **34**, 781–787 (2010).
17. Shen, W. *et al.* Adipose tissue quantification by imaging methods: a proposed classification. *Obes. Res.* **11**, 5–16 (2003).
18. Camhi, S. M. *et al.* The relationship of waist circumference and BMI to visceral, subcutaneous, and total body fat: sex and race differences. *Obes. Silver Spring Md* **19**, 402–408 (2011).
19. Barreira, T. V. *et al.* Anthropometric correlates of total body fat, abdominal adiposity, and cardiovascular disease risk factors in a biracial sample of men and women. *Mayo Clin. Proc.* **87**, 452–460 (2012).
20. Barreira, T. V., Broyles, S. T., Gupta, A. K. & Katzmarzyk, P. T. Relationship of anthropometric indices to abdominal and total body fat in youth: sex and race differences. *Obes. Silver Spring Md* **22**, 1345–1350 (2014).
21. Schweitzer, L. *et al.* What is the best reference site for a single MRI slice to assess whole-body skeletal muscle and adipose tissue volumes in healthy adults? *Am. J. Clin. Nutr.* **102**, 58–65 (2015).
22. Bouchard, C. BMI, fat mass, abdominal adiposity and visceral fat: where is the 'beef'? *Int. J. Obes.* **31**, 1552–1553 (2007).
23. Yashima, Y. *et al.* A large volume of visceral adipose tissue leads to severe acute pancreatitis. *J. Gastroenterol.* **46**, 1213–1218 (2011).
24. Chandra, A. *et al.* The relationship of body mass and fat distribution with incident hypertension. *J. Am. Coll. Cardiol.* **64**, 997–1002 (2014).
25. Shen, W. *et al.* A single MRI slice does not accurately predict visceral and subcutaneous adipose tissue changes during weight loss. *Obesity* **20**, 2458–2463 (2012).
26. So, R. *et al.* Best single-slice measurement site for estimating visceral adipose tissue volume after weight loss in obese, Japanese men. *Nutr. Metab.* **9**, 1–9 (2012).
27. Kanaley, J. A., Giannopoulou, I. & Ploutz-Snyder, L. L. Regional differences in abdominal fat loss. *Int. J. Obes.* **31**, 147–152 (2007).
28. Brown, R. E., Kuk, J. L. & Lee, S. Measurement site influences abdominal subcutaneous and visceral adipose tissue in obese adolescents before and after exercise. *Pediatr. Obes.* **10**, 98–104 (2015).

Acknowledgements

We would like to thank Veronika Peter and Kilian Soltz for their assistance with the recruitment and examination of our subjects. We also thank Alexander Strübing from the Institute of Medical Informatics, Statistics and Epidemiology, Leipzig University, for support in data analysis. Grant support was provided by the German Federal Ministry of Education and Research under BMBF 01EO1001, including IFB ADI K7-K19, IFB ADI K7-24 and IFB ADI K7-41. We also acknowledge support from the German Research Foundation (DFG) and the University of Leipzig within the program of Open Access Publishing.

Author Contributions

N.L., A.S., N.G. and H.B. planned the study. M.B., A.D., T.S., S.L., U.R. and T.Ks. provided the clinical data and A.S., N.L. and N.G. analyzed them. N.L., A.S., N.G. and H.B. wrote the manuscript. N.L., A.S., N.G., T.Kn. and H.B. edited the manuscript. All authors reviewed the manuscript and approved publication.

Additional Information

Supplementary information accompanies this paper at <http://www.nature.com/srep>

Competing financial interests: The authors declare no competing financial interests.

How to cite this article: Linder, N. *et al.* Age and gender specific estimation of visceral adipose tissue amounts from radiological images in morbidly obese patients. *Sci. Rep.* **6**, 22261; doi: 10.1038/srep22261 (2016).



This work is licensed under a Creative Commons Attribution 4.0 International License. The images or other third party material in this article are included in the article's Creative Commons license, unless indicated otherwise in the credit line; if the material is not included under the Creative Commons license, users will need to obtain permission from the license holder to reproduce the material. To view a copy of this license, visit <http://creativecommons.org/licenses/by/4.0/>