

SCIENTIFIC REPORTS

OPEN

Alterations of Pregnant Gait during Pregnancy and Post-Partum

Qichang Mei ^{1,2,3}, Yaodong Gu ^{1,2,3} & Justin Fernandez^{2,3,4}

Physique changes during pregnancy lead to gait characteristic variations. This study aimed to analyse gait of pregnant individuals throughout pregnancy and post-partum. Sixteen healthy pregnant women volunteered as participants and had their lower limb kinematics analysed through a VICON three-dimensional motion system and plantar pressure measured with a Novel EMED force plate. Significant changes were observed in pelvic anterior motion, hip and ankle joint kinematics. Mean pressure distribution and COP trajectory deviation altered accordingly with increased pregnancy time, compared with post-partum. This longitudinal study of pregnant gait biomechanics in T2, T3 and PP reveals lower extremity kinematic and foot pressure alterations to adapt to pregnancy related changes, and the COP trajectory highlights a falling risk during pregnancy, particularly in T3.

Pregnancy is a normal condition experienced by many women that leads to anatomical and physiological alterations, affecting the musculoskeletal system and showing altered gait and posture characteristics. In the process of delivery, body weight increases greatly in the trunk (belly) during fetus growth, which leads to physique changes¹. Previous studies showed that integrated changes during pregnancy increased falling risk for pregnant women²⁻⁴. The plantar loading would redistribute as the body weight increase and centre of mass relocate, which is reported to be correlated with foot complaints^{5,6}. Thus, the motor system adjusts accordingly to compensate these changes to keep postural balance and gait stability^{2-4,7-10}.

Previous investigation of non-pregnant and pregnant women in different trimesters presented altered lower extremity kinematics and kinetics^{6,11-14}. A decreased step length and increased step width with slower walking velocity, and longer double-support time with progression of pregnant trimesters was the gait pattern observed for stability improvement^{11,13,15,16}. The trunk and lower extremity motion changed greatly during pregnancy, particularly the pelvis and hip joint¹⁶. Branco *et al.*¹⁷ found that joint kinematics showed significant decrease of hip extension and adduction and ankle plantarflexion during pregnancy. These were mainly affected by fear of balance loss during late pregnancy¹³. Due to the constantly upward-transferred centre of gravity, the ability to control trunk equilibrium declined in late pregnancy¹⁸. Significant increases in mean pelvic and ankle separation widths and anterior tilt of the pelvis during pregnancy were also found¹⁹. The so-called “duck”, “penguin” or “waddle” pregnant gait may come into being due to significant variations of joints^{18,20}.

Owing to the particular physique change to the belly, the lower extremity experienced significant changes during pregnancy²¹. Previous research showed the stiffness of the longitudinal foot arch significantly decreased during the first trimester and was not obvious during the last trimester²². Gaymer *et al.*¹² reported that midfoot plantar pressure significantly increased during late pregnancy. This may provide an explanation for the decreased stability during pregnancy, and foot pronation is observed among pregnant individuals^{5,21}. However, pregnant subjects typically adopt the strategy of increasing ankle stiffness to prevent falling³. The larger COP medial-lateral displacement is believed to be an adaptation strategy²³. What else, the redistributed plantar pressure, especially to the forefoot regions, attributed to foot pain and other complaints^{5,6,22}.

Pregnant women are at high risk of falling (28%)²⁴, showing a greatly increased hospitalization rate from falling as trimesters progress (9.4% in the first, 11.3% in the second, and 79.3% in the third trimester)². Pregnant women are 2.3 times more likely than non-pregnant or reproductive-aged women of falling²⁵. These reported findings concerning pregnant gait alterations in different trimesters were all conducted during pregnancy. Apart from basic pregnant gait character analysis, the stair ascent and descent locomotion was investigated to check the ground reaction force alteration to reveal falling risks²⁶. However, few studies have investigated gait

¹Faculty of Sports Science, Ningbo University, Ningbo, 315211, China. ²Research Academy of Grand Health Interdisciplinary, Ningbo University, Ningbo, 315211, China. ³Auckland Bioengineering Institute, University of Auckland, Auckland, 1010, New Zealand. ⁴Department of Engineering Science, University of Auckland, Auckland, 1010, New Zealand. Correspondence and requests for materials should be addressed to Y.G. (email: guyaodong@hotmail.com)

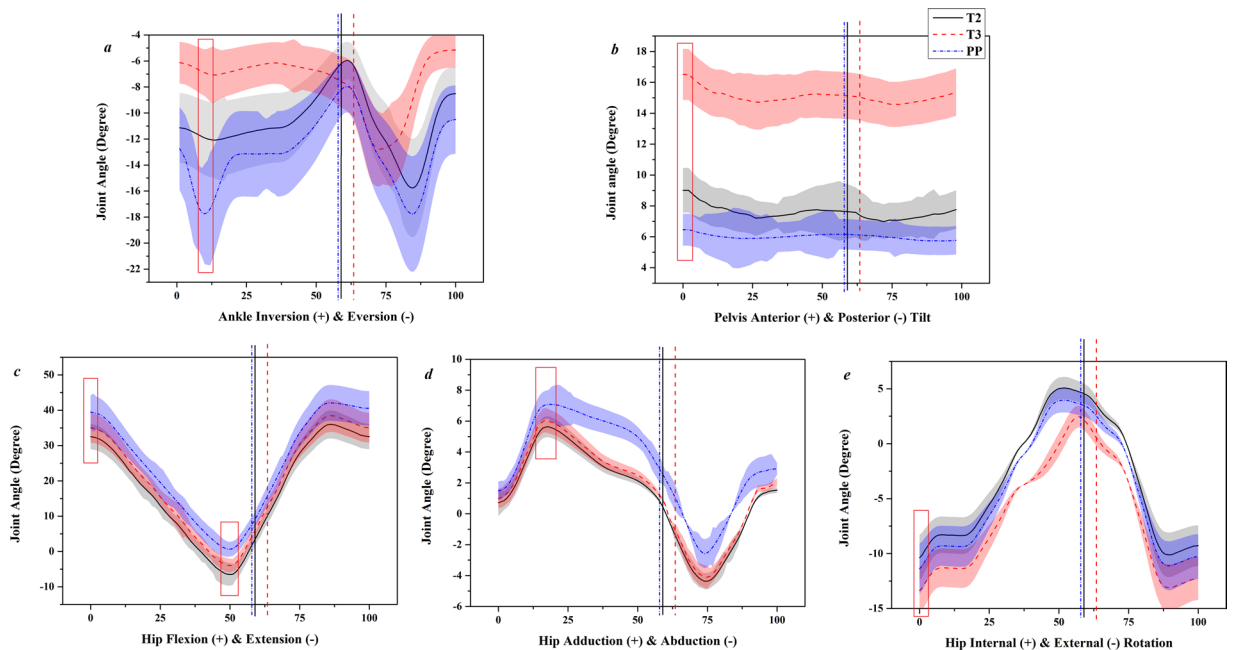


Figure 1. Mean angle curve (with SD) of ankle, pelvis and hip in a gait cycle (T2-solid black line, T3-dashed red line, and PP-dot blue line) with vertical lines indicating the stance phase and red rectangles highlighting peak value significance.

		T2	T3	PP
Ankle	Inversion	-7.28 ± 1.75	-6.13 ± 1.59	-8.02 ± 2.05
	Eversion	$-12.07 \pm 2.89^{\#}$	$-7.07 \pm 2.18^{\downarrow *}$	$-17.76 \pm 4.02^{\uparrow *}$
Pelvis	Anterior tilt	$8.46 \pm 2.09^{\downarrow \#}$	$16.70 \pm 2.18^{\uparrow *}$	6.35 ± 3.02
Hip	Flexion	32.67 ± 2.58	$34.81 \pm 3.52^{\downarrow *}$	$39.2 \pm 3.11^{\uparrow *}$
	Extension	-4.13 ± 1.31	$-2.89 \pm 1.05^{\uparrow *}$	$1.14 \pm 1.12^{\downarrow *}$
	Adduction	5.13 ± 1.57	$6.20 \pm 2.06^{\downarrow *}$	$7.74 \pm 1.66^{\uparrow *}$
	Abduction	1.03 ± 1.87	-1.38 ± 1.31	2.98 ± 1.06
	Internal rotation	4.96 ± 1.96	2.58 ± 2.16	4.33 ± 1.65
	External rotation	$-11.04 \pm 3.74^{\downarrow \#}$	$-14.05 \pm 3.96^{\uparrow *}$	-12.12 ± 4.02

Table 1. The peak angle values of ankle, pelvis and hip in the stance of T2, T3 and PP (degree, $n = 16$). Note: $\#$ represents significance between T2 and T3, $\&$ represents significance between T3 and PP, and $*$ represents significance between T2 and PP. Minus ‘-’ represents position relative defined motion axis. Arrows (\uparrow/\downarrow) mean increase or decrease between two variables.

biomechanical characteristic changes of pregnant individuals in different trimesters and post-partum, which lasts six weeks after delivery².

This study took a longitudinal perspective to study pregnant women in the second trimester (T2), third trimester (T3) and 4-month post-partum (PP), integrating kinematics with kinetics analysis of normal pregnant walking to investigate gait characteristics. It is hypothesized that pregnant individuals would present altered gait characteristics throughout trimesters and post-partum, and this is measured via evaluation of foot pressure, pelvis and lower extremity kinematics.

Results

Based on the measured stride time and stance time, the stance phase (SP) are indicated in the joint angle figures with vertical solid line for T2 (58.95%), vertical dashed line for T3 (63.42%) and vertical dot line for PP (57.82%) respectively, to illustrate walking gait alterations. Lower extremity joints show consistent tendency in the stance phase, apart from significant inversion/eversion of ankle (Fig. 1a) and anterior tilt of pelvis (Fig. 1b) in T3. The other peak angle values with significance ($p < 0.05$) are highlighted with red rectangles (Fig. 1) and illustrated in Table 1.

Peak ankle eversion angles significantly decrease from T2 to T3 ($p = 0.021$), but increases in PP compared with T2 ($p = 0.029$) and T3 ($p = 0.006$). The pelvic peak anterior tilt angle in T3 is greater than T2 ($p = 0.013$) and PP ($p = 0.009$). Peak hip flexion angle shows significance between comparison of PP with T2 ($p = 0.023$) and T3 ($p = 0.031$). Peak hip extension angle shows differences between PP with T2 ($p = 0.046$) and T3 ($p = 0.031$).

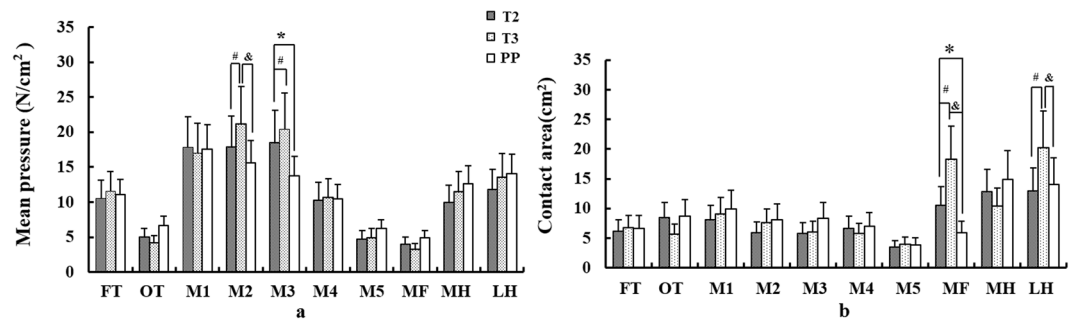


Figure 2. Comparison of mean pressure (a), contact area (b) among T2, T3 and PP. #Represents significance between T2 and T3, &represents significance between T3 and PP, and *represents significance between T2 and PP.

PP have larger peak hip adduction angle in stance than T2 ($p = 0.042$) and T3 ($p = 0.039$). Peak external rotation angle in T3 is greater than T2 ($p = 0.034$) and PP ($p = 0.036$).

In the Fig. 2a, mean pressure in M2 of T3 are significantly larger than T2 ($p = 0.038$) and PP ($p = 0.029$). Mean pressure in T3 was greater than T2 ($p = 0.039$) and PP ($p = 0.021$) in M3. As the gestational weeks progressed, an increase in MF contact area is observed ($p = 0.022$ for T2 and T3), but significant reduction in PP ($p = 0.025$ for T2 and PP, $p = 0.014$ for T3 and PP). The T3 shows larger contact area than T2 ($p = 0.042$) and PP ($p = 0.041$) in LH (Fig. 2b).

In Fig. 3, the COP trajectory presents a lateral shift in the ICP during T2 and T3 (with amplified illustration in the right corner), particularly the T3 with significantly larger average COP coordinates in the x-direction (A_x) than T2 ($p = 0.032$) and PP ($p = 0.033$). The COP Deviation (D_n) increase significantly in T3 compared with PP during the ICP ($p = 0.038$) (Table 2). However, in the FFCP, D_n of the T2 ($p = 0.019$) and T3 ($p = 0.032$) decreases greatly compared with PP. In FFP, there is significant increase of D_n in T2 ($p = 0.018$) and T3 ($p = 0.028$) compared with PP. A significant decrease in T3 compared with T2 ($p = 0.036$) was also exhibited. The A_x in T2 and T3 of FFPOP increased compared with PP ($p = 0.031$, $p = 0.029$), with observable lateral transfer. The time (in percentage) of each phase in stance also shows significant difference. The T2 and T3 are significantly larger than PP, with $p = 0.01$ and 0.00 in the ICP. In the FFP, PP is longer than T2 ($p = 0.023$) and T3 (0.015). PP has shorter FFPOP time comparing with T2 ($p = 0.032$) and T3 ($p = 0.03$). As for the velocity in each phase, PP is significantly faster than T2 ($p = 0.039$) and T3 ($p = 0.009$) in the ICP. T3 presents smaller velocity than T2 ($p = 0.024$) and PP ($p = 0.022$) in the FFCP. The T2 has slower velocity in FFP than T3 ($p = 0.038$) and PP ($p = 0.026$), and T3 is also slower than PP ($p = 0.042$). In the FFPOP, PP shows significantly faster velocity than T3 ($p = 0.028$).

Discussion

Pregnant women have been found to exhibit special gait characteristics compared with non-pregnant women in previous studies. This study aimed to analyse the gait biomechanics of pregnant women throughout pregnancy and post-partum from a longitudinal perspective.

Contrasting the smaller inversion-eversion motion range during stance (Fig. 1a) of this study with previous research¹⁷, we observed a smaller peak ankle eversion in T3 than both T2 and PP. This is consistent with a previously reported strategy of increased ankle stiffness (which leads to a smaller peak ankle eversion) to enhance postural control and gait stability³. Pelvic anterior tilt increased with trimester progression with the growth of fetus and belly^{17,19}. The decreased hip flexion and extension has been linked with reduced step length, and the decreased hip abduction and increased hip external rotation are related with larger step width^{11,17,19,20}. These alterations may attribute to the biomechanical mechanism, which pregnant women adopt for motor stability maintenance and prevention of falling.

Mean pressure in M2 and M3 significantly increased from T2 to T3, but reduced in PP. This findings showed consistency with the central shift of the COP in the forefoot (Fig. 3), which was reported with forward shift of plantar loading during pregnancy^{5,6}. The MF contact area increased from T2 to T3 but decreased in PP, which was consistent with a previous report of pregnant vs non-pregnant women¹². One possible explanation is related to foot morphology changes^{22,27}, although participants in this study with abnormal changes were excluded by gynaecologists. Another explanation may be the foot longitudinal arch drop^{5,22} and foot stiffness³ from increased body weight as pregnancy progression.

The COP trajectory indicates gait stability during stance^{17,22,28}. The gait dynamics could be inferred from the COP deviation (D_n). As D_n increased, COP dispersed greatly, indicating declined gait stability. The significantly increased D_n in T2 and T3 could be indicators of reduced gait stability and increased falling risk^{17,22}, particularly in the FFP. In the ICP, D_n of T3 deviated significantly lateral (highlighted in the right corner of Fig. 3), showed greater D_n and averaged A_x (Table 2), which may result from motor adapted shock absorption owing to greatly increased body weight (with fetus)²⁸. In the FFCP, the D_n was higher during PP, which may be related with recovered stance characteristics with non-pregnant walking^{7,22}. The D_n in T2 and T3 was consistent with COP changes in FFP and FFPOP. Specifically, T2 and T3 presented significantly larger A_x than PP, which may be indicators of laterally shifted COP and altered walking stance stability characteristics^{3,39}. The amplified medial shift of COP in ICP of T3 may be linked with foot pronation, which was believed to be a shock absorption strategy for landing stability and safety²¹. Further, the lengthened time and shortened velocity during pregnancy of ICP is key

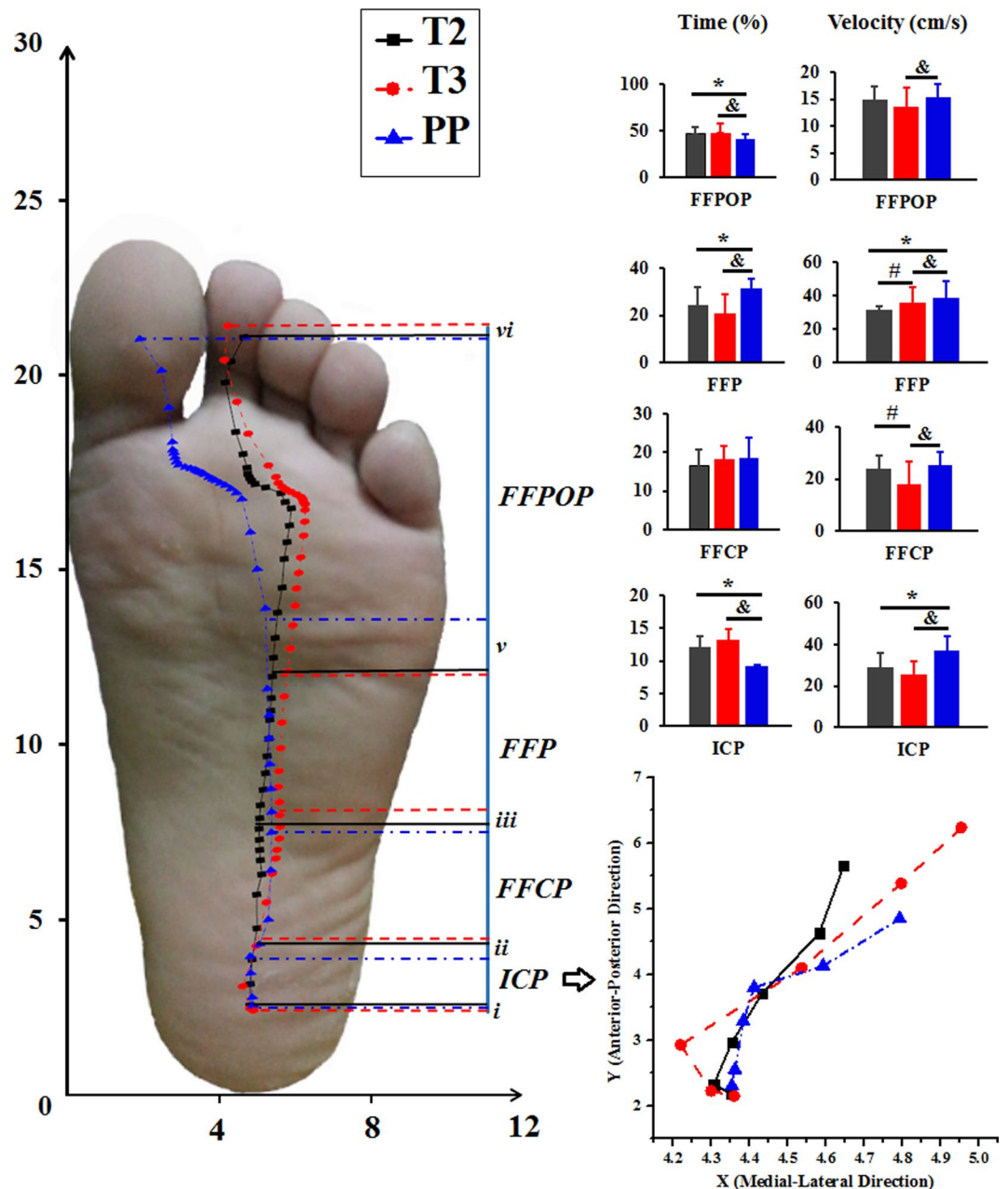


Figure 3. The illustration of COP trajectory, with indication of time (%) and velocity (cm/s), in different phases of stance. The solid black line, dashed red line and dot blue line respectively represents T2, T3 and PP. The ICP, FFCP, FFP and FFPOP means initial contact phase, forefoot contact phase, foot flat phase and forefoot push off phase, respectively. #Represents significance between T2 and T3, &represents significance between T3 and PP, and *represents significance between T2 and PP.

evidence in this study. In the FFCP and FFP, the presented COP deviation could be explained with foot rigid structure, such as the dropped foot longitudinal arch due to increased body weight during pregnancy^{3,10}. ICP of one foot occurs with FFPOP of another foot during walking (double support), both phases are closely related with gait stability (landing stability and pushing-off stability). The lengthened time and reduced velocity in ICP and FFPOP are believed to be the motion adaptation strategy for gait stability, which would also result in reduced FFCP and FFP time as compensation. Compared the COP time and velocity of the PP period in this study with previous reports of non-pregnant women^{17,21,22,29}, it was revealed that the COP trajectory was similar in both.

What deserves special attention in this study is that pregnant participants in (4 months) post-partum present similar lower extremity kinematic and COP trajectory characteristics compared with non-pregnant participants, compared with previous findings^{17,21,23}. This reveals that pregnant individuals may own flexible motion capacity to adapt pregnancy-related alterations. Based on this finding, exercise protocols could be formulated^{1,30} in future studies, to reduce incidences resulting from pregnancy^{25,31}. One limitation of this study is the lack of gait

		T2	T3	PP
ICP	A _x	4.36↓ [#]	4.52↑ ^{&}	4.35
	A _y	3.57	3.83	3.49
	D	1.13 ± 0.63	1.42 ± 0.57↑ ^{&}	0.78 ± 0.51
FFCP	A _x	5.49	6.01	5.1
	A _y	8.88	9.61	11.31
	D	1.57 ± 1.31	1.97 ± 0.95↓ ^{&}	3.04 ± 1.67*
FFP	A _x	6.23	6.79	4.7
	A _y	15.69	16.27	18.42
	D	1.53 ± 0.74↑ [#]	1 ± 0.49↑ ^{&}	0.26 ± 0.15↓ [#]
FFPOP	A _x	5.85	6.4↑ ^{&}	4.15↓ [#]
	A _y	19.66	19.1	20.05
	D	1.41 ± 0.81	1.56 ± 0.72	1.25 ± 0.46

Table 2. The averaged COP coordinates (A_n) and Deviation (D_n) in four phases of stance. Note: The C_{xn} and C_{yn} are constant centre of pressure trajectory coordinates in the medial-lateral direction (x) and anterior-posterior direction (y), and the A_{xn} and A_{yn} are averaged centre of pressure coordinates in the medial-lateral direction (x) and anterior-posterior direction (y). #Represents significance between T2 and T3, & represents significance between, T3 and PP, and * represents significance between T2 and PP. Arrows (↑/↓) mean increase or decrease between two variables.

biomechanics data in the first trimester as most women are unavailable for study via the hospital in this period due to nausea. Another limitation concerns the reversible or non-reversible changes in pregnant foot shape, which might affect plantar loading and need further analysis via collecting larger data sets throughout pregnancy and post-partum.

In conclusion, this longitudinal study of pregnant gait biomechanics in T2, T3 and PP reveals lower extremity kinematic and foot pressure alterations to adapt to pregnancy related changes, and the COP trajectory highlights a falling risk during pregnancy, particularly in T3.

Methods

Participants. Sixteen healthy pregnant women (age: 32.5 ± 3.64 years and height: 161.8 ± 5.27 cm) participated in the study during three stages, including the second trimester (T2) (21 ± 0.58 gestational weeks and weight: 57.4 ± 2.03 kg), third trimester (T3) (29 ± 0.72 gestational weeks and weight: 59.6 ± 2.36 kg) and 4-month post-partum (PP) (weight: 51.8 ± 2.21 kg), respectively. The averaged foot length and width are 228 mm and 105 mm throughout pregnancy and post-partum. This study with detailed guidelines for participants' safety and experiment protocols was approved by the Human Ethics Committee of Ningbo University (ARGH20150616), and all methods were performed in accordance with the guidelines and regulations. Prior to the test, all subjects gave informed consent knowing test procedures and requirements. All subjects presented with no injury or pain to the lower limb or foot deformities throughout the test process.

Experiment Protocols. All participants walked barefoot on a 10-meter walkway at their self-selected comfortable speed to present normal gait characters, with right foot striking on the force plate. Subjects were instructed to perform five minutes' walking for warm up, lab environment familiarization and step adjustment. A gait cycle was defined as ipsilateral heel (right foot in this study) contact ground twice. Each participant conducted five trials of walking test with synchronous collection of kinematics and plantar pressure data, which were used to obtain averaged values to minimise inter-trial errors. The collected kinematics data for analysis in this study include peak angle values in a stance and joint angle curves during a gait cycle.

An eight-camera three-dimensional motion analysis system (VICON Motion System Ltd., Oxford, England) was used to capture kinematics of the pelvis, hip, knee and ankle with a frequency of 200 Hz. The standard Plug-In Gait model with 16 reflective markers was used to define joint centre and motion axes, with marker-set locations including: anterior-superior iliac spine (Left and Right ASIS), posterior-superior iliac spine (Left and Right PSIS), lateral thigh (Left and Right THI), lateral knee (Left and Right KNE), lateral tibia (Left and Right TIB), lateral ankle (Left and Right ANK), toe (Left and Right TOE) and heel (Left and Right HEE). With the growth of fetus and belly, which could influence the location of left and right ASIS, one professional obstetrics doctor assisted locating the anatomical position during the gait test to ensure the accuracy of marker placement and pregnant participants' safety. Peak joints (pelvis, hip and ankle) angles in a stance phase were utilised for analysis, including pelvis anterior/posterior tilt, flexion/extension (dorsiflexion/plantarflexion for ankle) in the sagittal plane, abduction/adduction (inversion/eversion for ankle) in the coronal plane, and internal/external rotation in the horizontal plane^{16,17}.

A Novel EMED force plate (Novel GmbH, Munich, Germany) was fixed in the middle of the walkway to record plantar loading with a frequency of 100 Hz. The foot was divided into ten anatomic parts, including first toe (FT), 2nd to 5th or other toes (OT), first metatarsal (M1), second metatarsal (M2), third metatarsal (M3), fourth metatarsal (M4), fifth metatarsal (M5), middle foot (MF), medial heel (MH), and lateral heel (LH). Variables included mean pressure (averaged pressure distributed to each region measures from the force) and contact area (the contact area of plantar surface with the force plate)^{6,12,32} for above ten parts. Total contact area was defined as

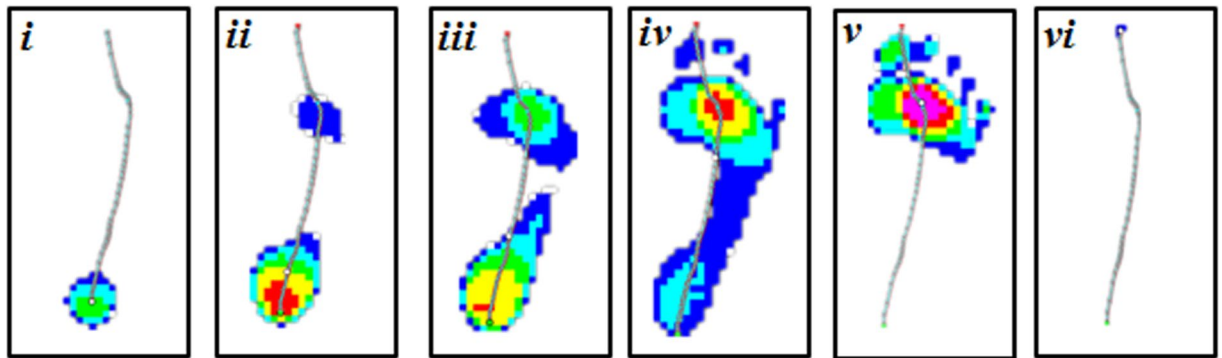


Figure 4. The illustration of cut-off points (*i* to *vi*) for stance phase division. (*i*, heel first contact; *ii*, one of the metatarsals contact; *iii*, all metatarsals head contact; *iv*, full foot contact; *v*, heel off; *vi*, toes off).

the number of EMED force plate sensors activated (with each sensor having a known area). The centre of pressure trajectory was analysed with further spatial details outline below.

The stance (100%) of the right foot was divided into four phases including six cut-off points (from *i* to *vi* in the Fig. 4) based on previous studies^{28,33,34}. The initial contact phase (ICP) begins from heel first contact (*i*) to one of the metatarsals contact (*ii*) the plate. The forefoot contact phase (FFCP) begins from one of the metatarsals contact (*ii*) to all metatarsals head contact (*iii*) the plate. The foot flat phase (FFP) begins from all metatarsals contact (*iii*), full foot contact (*iv*) to heel off (*v*) the plate. And the forefoot push off phase (FFPOP) begins from heel off (*v*) to toes off (*vi*) the plate.

The COP trajectory is resolved into coordinates x and y , which are normalized to feet width in the medial-lateral direction (x) and length in the anterior-posterior direction (y). C_{xn} and C_{yn} are variables referring to the coordinates of the centre of pressure trajectory in the medial-lateral direction (x) and anterior-posterior direction (y), respectively. A_{xn} and A_{yn} are variables referring to the averaged coordinates of the centre of pressure in the medial-lateral direction (x) and anterior-posterior direction (y), respectively.

The deviation of COP trajectory, D_n was calculated with following equation³⁵:

$$D_n = \sqrt{(C_{xn} - A_{xn})^2 + (C_{yn} - A_{yn})^2}$$

The phase time (in percentage) and velocity (in cm/s), averaged COP coordinates (Ax & Ay), and deviation (D) of collected data in second trimester (T2), third trimester (T3) and post-partum (PP) were taken to analyse and illustrate gait characteristics.

Statistical analysis. The SPSS 19.0 (SPSS Inc., Chicago, IL, USA) were utilized for statistical analysis. The kinematic and plantar pressure variables (peak angle values, mean pressure, contact area, phase duration and velocity, averaged coordinates and D) was checked and confirmed with the Shapiro-Wilk normality test. For the T2, T3 and PP data paired analysis, the Repeated Measures ANOVA analysis were conducted to check the significance of each viable. The trial to trial reliability of COP coordinates in medial-lateral (x) and anterior-posterior (y) directions was tested with intra-class correlation coefficients (ICC), all showing good reliability (>0.75)^{21,22}. All the significance level was set at 0.05.

References

- Harris, S. T., Liu, J., Wilcox, S., Moran, R. & Gallagher, A. Exercise during pregnancy and its association with gestational weight gain. *Matern. Child Health J.* **19**, 528–537 (2015).
- Inanir, A., Cakmak, B., Hisim, Y. & Demirturk, F. Evaluation of postural equilibrium and fall risk during pregnancy. *Gait Posture* **39**, 1122–1125 (2014).
- Ersal, T., McCrory, J. L. & Sienko, K. H. Theoretical and experimental indicators of falls during pregnancy as assessed by postural perturbations. *Gait Posture* **39**, 218–223 (2014).
- Artal, R. & O'Toole, M. Guidelines of the American College of Obstetricians and Gynecologists for exercise during pregnancy and the postpartum period. *Br. J. Sports Med.* **37**, 6–12 (2003).
- Mitternacht, J., Klement, A. & Lampe, R. Plantar pressure distribution during and after pregnancy. *Eur. Orthop. Traumatol.* **4**, 229–236 (2013).
- Karadag-Saygi, E., Unlu-Ozkan, F. & Basgul, A. Plantar pressure and foot pain in the last trimester of pregnancy. *Foot ankle Int.* **31**, 153–157 (2010).
- Huang, T.-H., Lin, S.-C., Ho, C.-S., Yu, C.-Y. & Chou, Y.-L. The gait analysis of pregnant women. *Biomed. Eng. Basis Commun.* **14**, 67–70 (2002).
- Butler, E. E., Colon, I., Druzyn, M. & Rose, J. An investigation of gait and postural balance during pregnancy. *Gait Posture* **24S**, S128–S129 (2006).
- McCrory, J. L., Chambers, A. J., Daftary, A. & Redfern, M. S. Dynamic postural stability in pregnant fallers and non-fallers. *BJOG An Int. J. Obstet. Gynaecol.* **117**, 954–962 (2010).
- Ribeiro, A. P., João, S. M. A. & Sacco, I. C. N. Static and dynamic biomechanical adaptations of the lower limbs and gait pattern changes during pregnancy. *Womens. Health (Lond. Engl.)* **9**, 99–108 (2013).
- Lymbery, J. K. & Gilleard, W. The stance phase of walking during late pregnancy: temporospatial and ground reaction force variables. *J. Am. Podiatr. Med. Assoc.* **95**, 247–253 (2005).

12. Gaymer, C., Whalley, H., Achten, J., Vatish, M. & Costa, M. L. Midfoot plantar pressure significantly increases during late gestation. *Foot* **19**, 114–116 (2009).
13. Blaszczyk, J. W., Opala-Berdzik, A. & Plewa, M. Adaptive changes in spatiotemporal gait characteristics in women during pregnancy. *Gait Posture* **43**, 160–164 (2016).
14. Branco, M., Santos-Rocha, R., Vieira, F., Aguiar, L. & Veloso, A. P. Three-Dimensional Kinetic Adaptations of Gait throughout Pregnancy and Postpartum. *Scientifica (Cairo)*. **2015**, 580374 (2015).
15. Forczek, W. & Staszkiwicz, R. Changes of kinematic gait parameters due to pregnancy. *Acta Bioeng. Biomech.* **14**, 113–119 (2012).
16. Branco, M. A. C., Santos-Rocha, R., Vieira, F., Aguiar, L. & Veloso, A. P. Three-dimensional kinematic adaptations of gait throughout pregnancy and post-partum. *Acta Bioeng. Biomech.* **18**, 153–162 (2016).
17. Branco, M., Santo-Rocha, R., Aguiar, L., Vieira, F. & Veloso, A. Kinematic Analysis of Gait in the Second and Third Trimesters of Pregnancy. *J. Pregnancy* **2013**, 718095 (2013).
18. Sawa, R. *et al.* Differences in trunk control between early and late pregnancy during gait. *Gait Posture* **42**, 455–459 (2015).
19. Foti, T., Davids, J. R. & Bagley, A. A Biomechanical Analysis of Gait During Pregnancy. *J. Bone Jt. Surg.* **82–A**, 625–632 (2000).
20. McCrory, J. L., Chambers, A. J., Daftary, A. & Redfern, M. S. The pregnant 'waddle': An evaluation of torso kinematics in pregnancy. *J. Biomech.* **47**, 2964–2968 (2014).
21. Ponnappula, P. & Boberg, J. S. Lower extremity changes experienced during pregnancy. *J. Foot Ankle Surg.* **49**, 452–458 (2010).
22. Segal, N. A. *et al.* Pregnancy leads to lasting changes in foot structure. *Am J Phys Med Rehabil* **92**, 232–240 (2013).
23. Zhang, Y., Lu, H., Gu, Y. & Hu, N. Characteristics of the centre of pressure progression for pregnant women during walking. *Int. J. Biomed. Eng. Technol.* **17**, 387–397 (2015).
24. McCrory, J. L., Chambers, A. J., Daftary, A. & Redfern, M. S. Ground reaction forces during gait in pregnant fallers and non-fallers. *Gait Posture* **34**, 524–528 (2011).
25. Weiss, H. B. Pregnancy-Associated Injury Hospitalizations in Pennsylvania, 1995. *Ann. Emerg. Med.* **34**, 626–636 (1999).
26. McCrory, J. L., Chambers, A. J., Daftary, A. & Redfern, M. S. Ground reaction forces during stair locomotion in pregnancy. *Gait Posture* **38**, 684–690 (2013).
27. Alvarez, R., Stokes, I. A., Asprinio, D. E., Trevino, S. & Braun, T. Dimensional changes of the feet in pregnancy. *J. Bone Joint Surg. Am.* **70**, 271–274 (1988).
28. De Cock, A., De Clercq, D., Willems, T. & Witvrouw, E. Temporal characteristics of foot roll-over during barefoot jogging: Reference data for young adults. *Gait Posture* **21**, 432–439 (2005).
29. Hu, N. Z., Mei, Q. C., Li, C. F. & Gu, Y. D. The walking plantar loading distribution of pregnant women in different trimesters. *J. Med. Imaging Heal. Informatics* **6**, 676–680 (2016).
30. American College of Obstetricians and Gynecologists. *Physical Activity and Exercise During Pregnancy and the Postpartum Period. Committee Opinion* <https://doi.org/10.1097/aog.0000000000001214> (2015).
31. Dunning, K. *et al.* Falls in Workers during Pregnancy: Risk Factors, Job Hazards, and High Risk Occupations. *Am. J. Ind. Med.* **44**, 664–672 (2003).
32. Hollander, K. *et al.* Growing-up (habitually) barefoot influences the development of foot and arch morphology in children and adolescents. *Sci. Rep.* **7**, 8079 (2017).
33. Mei, Q. C., Feng, N., Ren, X. J., Lake, M. & Gu, Y. D. Foot Loading Patterns With Different Unstable Soles Structure. *J. Mech. Med. Biol.* **15**, 1550014 (2015).
34. Chiu, M. C., Wu, H. C. & Chang, L. Y. Gait speed and gender effects on center of pressure progression during normal walking. *Gait Posture* **37**, 43–48 (2013).
35. Luximon, Y., Cong, Y., Luximon, A. & Zhang, M. Effects of heel base size, walking speed, and slope angle on center of pressure trajectory and plantar pressure when wearing high-heeled shoes. *Hum. Mov. Sci.* **41**, 307–319 (2015).

Acknowledgements

This study sponsored by National Natural Science Foundation of China (81772423), K. C. Wong Magna Fund in Ningbo University.

Author Contributions

Q.C.M. and Y.D.G. designed the study, conducted the experiment and wrote the manuscript. Q.C.M., Y.D.G. and J.F. analysed the data, checked the results and prepared all the tables and figures. Y.D.G. and J.F. polished and finally checked the manuscript.

Additional Information

Competing Interests: The authors declare that they have no competing interests.

Publisher's note: Springer Nature remains neutral with regard to jurisdictional claims in published maps and institutional affiliations.



Open Access This article is licensed under a Creative Commons Attribution 4.0 International License, which permits use, sharing, adaptation, distribution and reproduction in any medium or format, as long as you give appropriate credit to the original author(s) and the source, provide a link to the Creative Commons license, and indicate if changes were made. The images or other third party material in this article are included in the article's Creative Commons license, unless indicated otherwise in a credit line to the material. If material is not included in the article's Creative Commons license and your intended use is not permitted by statutory regulation or exceeds the permitted use, you will need to obtain permission directly from the copyright holder. To view a copy of this license, visit <http://creativecommons.org/licenses/by/4.0/>.

© The Author(s) 2018