

ARTICLE

<https://doi.org/10.1038/s41467-018-08227-1>

OPEN

Planar and van der Waals heterostructures for vertical tunnelling single electron transistors

Gwangwoo Kim¹, Sung-Soo Kim^{2,12}, Jonghyuk Jeon², Seong In Yoon¹, Seokmo Hong³, Young Jin Cho⁴, Abhishek Misra^{5,6}, Servet Ozdemir⁵, Jun Yin⁵, Davit Ghazaryan^{5,7}, Matthew Holwill⁵, Artem Mishchenko⁵, Daria V. Andreeva⁸, Yong-Jin Kim⁹, Hu Young Jeong¹⁰, A-Rang Jang^{1,3}, Hyun-Jong Chung⁴, Andre K. Geim⁵, Kostya S. Novoselov⁵, Byeong-Hyeok Sohn² & Hyeon Suk Shin^{1,3,9,11}

Despite a rich choice of two-dimensional materials, which exists these days, heterostructures, both vertical (van der Waals) and in-plane, offer an unprecedented control over the properties and functionalities of the resulted structures. Thus, planar heterostructures allow p-n junctions between different two-dimensional semiconductors and graphene nanoribbons with well-defined edges; and vertical heterostructures resulted in the observation of superconductivity in purely carbon-based systems and realisation of vertical tunnelling transistors. Here we demonstrate simultaneous use of in-plane and van der Waals heterostructures to build vertical single electron tunnelling transistors. We grow graphene quantum dots inside the matrix of hexagonal boron nitride, which allows a dramatic reduction of the number of localised states along the perimeter of the quantum dots. The use of hexagonal boron nitride tunnel barriers as contacts to the graphene quantum dots make our transistors reproducible and not dependent on the localised states, opening even larger flexibility when designing future devices.

¹Department of Energy Engineering, Ulsan National Institute of Science & Technology (UNIST), Ulsan 44919, Republic of Korea. ²Department of Chemistry, Seoul National University, Seoul 08826, Republic of Korea. ³Department of Chemistry, UNIST, Ulsan 44919, Republic of Korea. ⁴Department of Physics, Konkuk University, Seoul 05029, Republic of Korea. ⁵School of Physics and Astronomy, University of Manchester, Manchester M13 9PL, United Kingdom. ⁶Department of Physics, Indian Institute of Technology Madras, Chennai 600036, India. ⁷Department of Physics, National Research University Higher School of Economics, Staraya Basmannaya 21/4, Moscow 105066, Russian Federation. ⁸Department of Materials Science and Engineering, National University of Singapore, Singapore 117575, Singapore. ⁹Center for Multidimensional Carbon Materials, Institute of Basic Science (IBS), Ulsan 44919, Republic of Korea. ¹⁰UNIST Central Research Facilities (UCRF), UNIST, Ulsan 44919, Republic of Korea. ¹¹Low Dimensional Carbon Material Center, UNIST, Ulsan 44919, Republic of Korea. ¹²Present address: Carbon Composite Materials Research Center, Korea Institute of Science and Technology (KIST), Wanju 55324, Republic of Korea. Correspondence and requests for materials should be addressed to K.S.N. (email: kostya@manchester.ac.uk) or to B.-H.S. (email: bhsohn@snu.ac.kr) or to H.S.S. (email: shin@unist.ac.kr)

Graphene quantum dots (GQDs) and graphene nanowires have been attracting attention because of the linear spectrum obeyed by the quasiparticles^{1,2} (zero mass allows one to reach large quantisation energy, comparable with the room temperature, for relatively large quantum dots^{3,4}), small spin-orbit interaction^{5,6}, good chemical stability⁷ and the ability to support high currents. At the same time, the transport properties of such quantum dots, which are typically carved out of large sheets of graphene, are dominated by the localised edge states^{1,8,9}. Furthermore, arranging tunnelling contacts (usually carved graphene constriction) to such quantum dots with the specific, reproducible conductivity is a separate challenge.

Here we use planar^{10–12} and vertical^{13–15} heterostructures to mitigate the issues with the localised states both at the edges of the quantum dots and at the edges of the contacts. We propose to form GQDs inside the hexagonal boron nitride (hBN) matrix through catalytic-assisted substitution of boron and nitrogen atoms by carbon¹⁶. As the lattices of graphene and hBN are very similar—most of the bonds in a GQD become properly terminated, which minimises the number of such localised states. Thus, the edges of a GQD become effectively passivated with hBN. We would like to stress that our method allows the formation of GQDs with specific size, and can be extended to other structures and devices. We then used hBN tunnelling barrier and graphene electrodes in order to form contacts to such quantum dots, creating single-electron tunnelling transistors. Such method results in very precise, reproducible contact resistance and the graphene-hBN interface free of localised states.

Results

Formation of GQDs. In order to fabricate the in-plane graphene/hBN heterostructures, we used a conversion reaction on a patterned Pt-SiO₂ substrate described in ref. ¹⁶. Based on the spatially controlled conversion, the growth of in-plane GQD-hBN heterostructure was achieved on a SiO₂ substrate covered by an array of platinum (Pt) nanoparticles (NP), as illustrated in Fig. 1. The high-quality hBN monolayer was first grown on Pt foils via chemical vapour deposition (CVD), using ammonia borane as a precursor¹⁷ (the experimental details for the growth and the characterisation of monolayer hBN are provided in Methods and Supplementary Figure 1). Next, the hBN film was transferred onto an array of Pt NPs spread over SiO₂ substrate, prepared with the aid of self-patterning diblock copolymer micelles¹⁸. The Pt NPs were obtained by spin-coating of a single layer of polystyrene-block-poly(4-vinylpyridine) (PS-P4VP) micelles, with an H₂PtCl₆ precursor for Pt NPs within their cores, followed by the annealing at 400 °C. Then, the conversion of the hBN sheet to graphene on the array of Pt NPs on the SiO₂ substrate was accomplished at ~950 °C in methane/argon atmosphere. During the reaction, the hBN on top of Pt NPs was selectively converted to graphene, with the formation of uniform GQD arrays embedded in the hBN film (Supplementary Figure 2). Notably, depending on the molecular weight of the diblock copolymer, the size of the Pt NPs was controlled in the range of 7–13 nm. The scanning electron microscopy (SEM) images presented in Fig. 2a–c demonstrates the uniform arrays of Pt NPs with diameters of ~7, 10 and 13 nm (Fig. 2d–f). Next, the as-prepared GQD-hBN in-plane heterostructure was placed in aqua regia solution to remove Pt NPs (Fig. 2g–i), and finally, transferred onto arbitrary substrates for further characterisation and processing. Note, that the area of obtained GQDs is comparable to the size of the Pt NPs, as shown in Fig. 2. The removal of the Pt NPs was confirmed by X-ray photoelectron spectroscopy (XPS) and transmission electron microscopy (TEM) (Supplementary Figures 3–4)

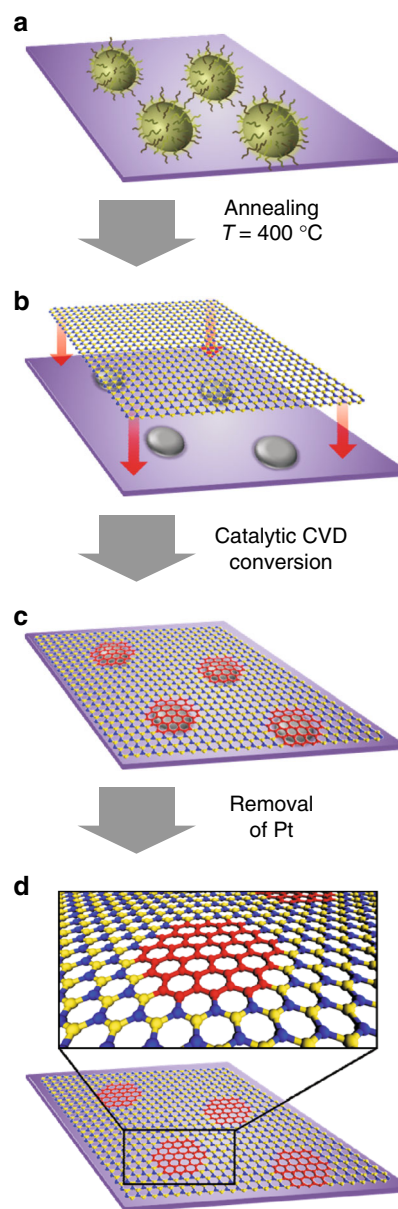


Fig. 1 The fabrication steps of GQD-hBN in-plane heterostructure based on hBN to graphene conversion catalysed by Pt NPs. **a** The self-assembly of diblock copolymer micelles PS-P4VP with H₂PtCl₆ on Si/SiO₂ substrate. **b** Transfer of hBN monolayer on SiO₂ substrate covered by Pt NPs (blue spheres—boron atoms, yellow spheres—nitrogen). **c** Formation of the GQDs on top of an array of Pt NPs by catalytically assisted CVD (red spheres—carbon atoms). **d** The obtained in-plane GQD-hBN heterostructure after the removal of Pt NPs

The formation of GQDs was confirmed by Raman spectroscopy (Fig. 3a) and electron energy loss spectroscopy (EELS) (Supplementary Figure 5). Typical Raman signals of GQDs and hBN were observed from the in-plane heterostructure of GQD-hBN transferred onto a SiO₂ substrate: the D (1345 cm⁻¹) and G (1595 cm⁻¹) bands of graphene with an intervening E_{2g} peak (1371 cm⁻¹) of an hBN^{19,20}. Furthermore, the in-plane graphene domain size (L_d) was calculated using the ratio of the integrated intensity (I_D/I_G) according to the Tuinstra-Koenig relation²¹ (Supplementary Table 1 and Supplementary Note 1), which is consistent with the size of GQDs, observed by SEM, Fig. 2. The formation of GQD-hBN heterostructures was also confirmed

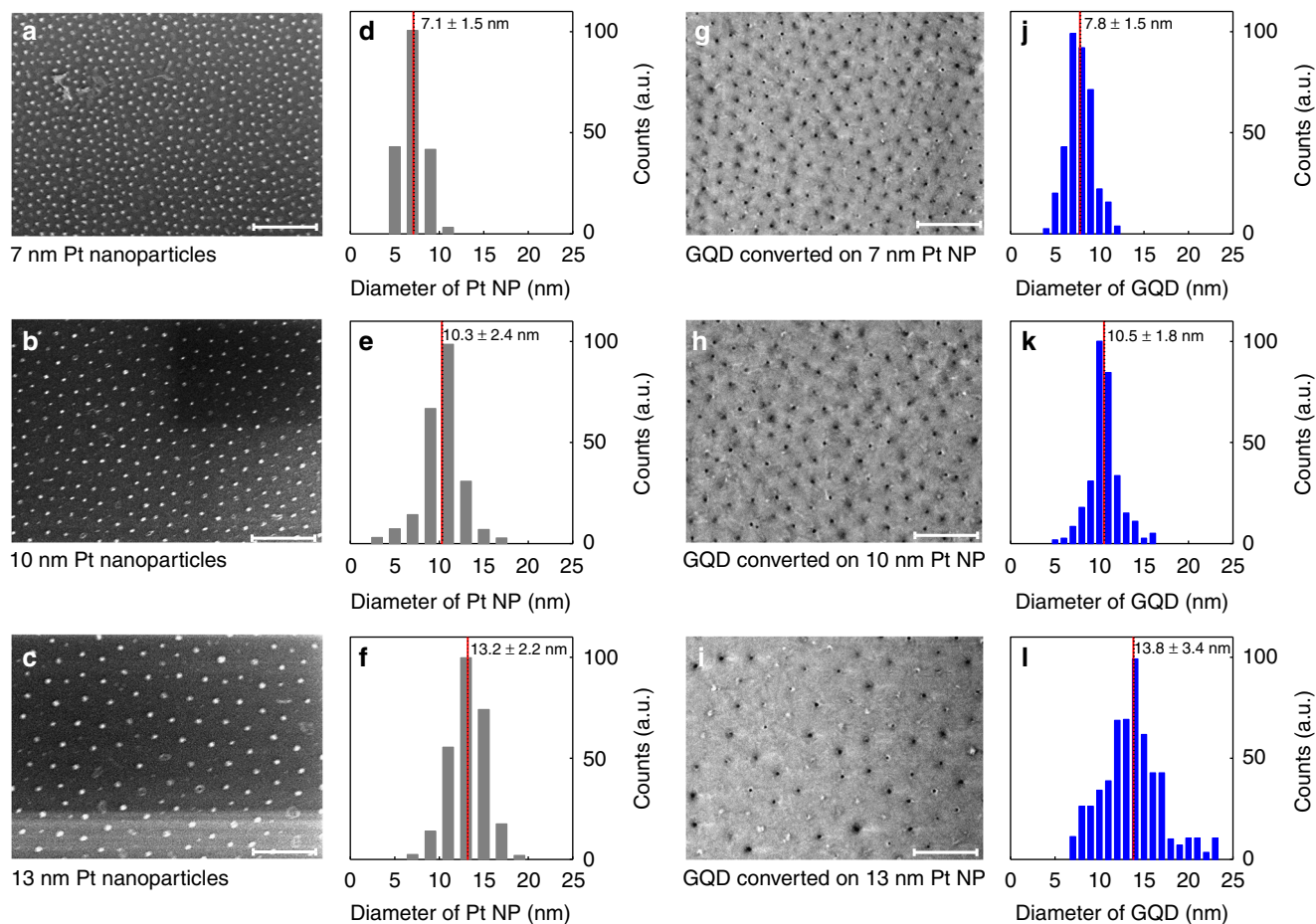


Fig. 2 Size and spatial distribution of the GQDs. **a–c**, The SEM images of 7, 10 and 13 nm sized self-assembled arrays of Pt NPs on SiO₂ substrates, respectively. Scale bar 300 nm. **d–f** Corresponding size distribution histograms of Pt NPs on SiO₂ substrates. Numbers give the average (marked by red lines) and the standard deviation. **g–i** The SEM images of GQD-hBN in-plane heterostructures prepared on pristine SiO₂. Scale bar 300 nm. **j–l** Corresponding size histograms of GQD-hBN samples. Numbers give the average (marked by red lines) and the standard deviation

from absorption bands of hBN and GQDs in the UV-vis absorption spectra (Supplementary Figure 6) and EELS mapping (Supplementary Figure 5).

In order to characterise the interface between the GQDs and hBN in our in-plane heterostructures, we performed an XPS, Fig. 3b–d, which suggests a reasonable formation of bonds among carbon, nitrogen and boron atoms^{22,23}. The obtained boron 1s peak, illustrated in Fig. 3b can be deconvoluted into two peaks with the energies of 189.7 eV and 190.4 eV, which are attributed to the B–C and B–N bonds, respectively. Notably, such a peak value of the B–N bond is very close to the measured value of boron 1s (190.5 eV) in the pristine hBN monolayers (see Supplementary Figure 1). Next, the nitrogen 1s peak, presented in Fig. 3c is composed of two peaks, corresponding to N–B bonds (397.5 eV) and N–C bonds (398.2 eV). Finally, the formation of C–B (283.2 eV) and C–N (285.0 eV) bonds were confirmed in the XPS carbon 1s spectrum (Fig. 3d). In addition, we also confirmed the C–N bonds at 1273 cm⁻¹ and the B–N bonds at 1375 cm⁻¹ in the measured infrared (IR) spectra of the GQD-hBN in-plane heterostructure (Supplementary Figure 7). The B–C bonds, which are expected to appear at ~1020 cm⁻¹, were not identified owing to an emergence of a very strong SiO₂ peak. Owing to the small size of our quantum dots—the lattice mismatch between graphene and hBN is not expected to lead to the formation of dislocations as in the case of bulk graphene/hBN planar heterostructures²⁴.

Vertical single-electron tunnelling transistors. Such GQDs embedded in an hBN matrix are ideally suited for the formation of van der Waals heterostructures^{25–27}. To this end, we prepared vertical tunnelling single-electron transistors^{28–31}, where the transparency of the contacts is controlled by tunnelling through atomically thin hBN layers, thus avoiding the issue of the localised states in the contacts⁸. Our van der Waals heterostructures of the type 30 nm_hBN/Gr/2hBN/GQD-hBN/2hBN/Gr/20 nm_hBN have been assembled on Si/SiO₂ substrate (acting as a back gate) by using dry transfer method³² (see device fabrication in Methods). Here, 30 nm_hBN stands for the hBN layer with an approximate thickness of 30 nm, Gr—for graphene, 2hBN—for 2-layer thick exfoliated hBN, GQD-hBN—for GQD-hBN lateral heterostructure. Schematic structure and the layer arrangement of our devices is presented on the inset to Fig. 4e. The GQD-hBN layer was sandwiched between two thin hBN layers to isolate the quantum dots from the contacts to ensure a long lifetime of electrons within the quantum dots, thus, to allow the detection of the single-electron energy levels. All our devices were fabricated in a symmetric configuration—with the same number of hBN layers on each side of the GQD-hBN layer. Devices with two (2hBN) and three (3hBN) layer thick hBN-tunnelling barriers have been produced. Information about all the devices measured can be found in the Supplementary Table 2.

We performed tunnelling spectroscopy on our van der Waals heterostructures, by applying a mixed signal of AC and DC bias

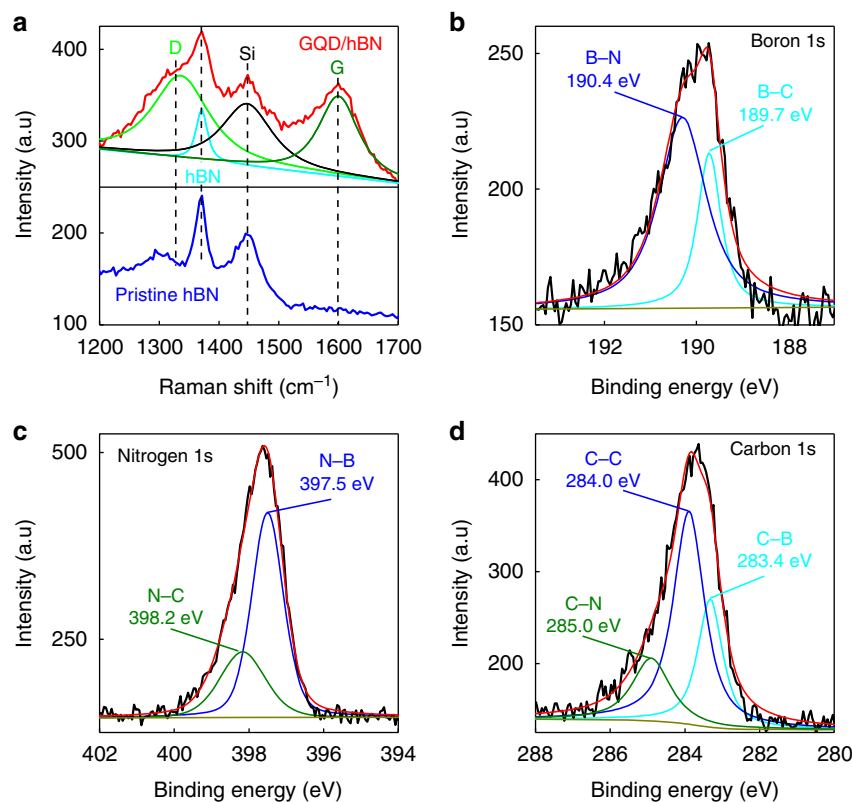


Fig. 3 Characterisation of GQD-hBN interface of the in-plane heterostructure with GQDs of the size of 7 nm. **a** Raman spectra of GQD-hBN planar heterostructure (red) and pristine hBN (blue). XPS spectra of GQD-hBN planar heterostructure: **b** boron 1s, **c** nitrogen 1s and **d** carbon 1s spectrum

voltages between the two graphene electrodes, and a gate voltage to the silicon substrate (see Methods and ref. ³³ for details). Figure 4 presents a colour map of differential conductance $G(V_g, V_b) = dI/dV_b$ as a function of the gate (V_g) and bias (V_b) voltages for one of our devices with 13 nm GQDs (examples of the tunnelling conductance for devices with 7 nm GQD are presented in Supplementary Figure 8). Two types of sharp peaks can be identified on top of the smooth background; (i) those organised into overlapping diamonds (the edges of the diamonds are marked by thin long red arrows, Fig. 4a), (ii) those following square root dependence (marked by thin long green arrows, Fig. 4a–c). We attribute the peaks with square root dependence in $G(V_g, V_b)$ to arise owing to tunnelling through the localised electronic state, and the diamond-shaped features—to Coulomb blockade diamonds owing to tunnelling through single-electron states in individual GQDs.

Each diamond corresponds to a Coulomb blockade regime in one particular GQD. For a single GQD, one would observe a sequence of diamonds that connect to each other only at vertices. As we have a large number of GQDs connected in parallel—we observe a number of overlapping diamonds³⁴. The zero-bias conductance within the diamond, Fig. 4f is given by the background tunnelling through the five-layer hBN (two layers of hBN on each side of the middle GQD-hBN layer) and is within the expected range³⁵, indicating the absence of the pin-holes in the barrier. To confirm that Coulomb diamonds are originating from the single-electron charging events happening at GQDs, heterostructures of the stack 30 nm_hBN/Gr/2hBN/CVD hBN/2hBN/Gr/20 nm_hBN were produced. In such devices, the same CVD-grown hBN as used in devices of Fig. 4 is utilised, however, this CVD hBN does not contain any GQD in it. No Coulomb diamonds were observed in such devices (see Supplementary Figure 9). Furthermore, the conductivity of such devices is

significantly lower than that for devices with GQDs, which proves that the Coulomb diamonds we observe are indeed coming from the GQDs.

In our diagrams (Fig. 4), each set of diamonds corresponds to a particular graphene quantum dot. Thus, we can estimate the number of GQDs involved in tunnelling, which gives us ~ 40 quantum dots connected in parallel for the device with 13 nm GQD. Thus, the number of GQDs we see participating in tunnelling is much smaller than the total number of GQDs within the area of the device (~ 50 GQDs per μm^2 , the total area of the device $\sim 30 \mu\text{m}^2$ for the sample with 13 nm GQD). Currently we don't have an explanation for this effect. However, it can be speculated that as it is the silicon gate (separated from the layer with GQD by ~ 300 nm of SiO_2 and hBN), which provides the most efficient screening (graphene electrodes provide only weak screening)—GQD interact strongly between themselves via Coulomb interaction. It means that the observed Coulomb diamonds are the result of the collective behaviour of several GQDs within the 300 nm radius. This would also explain the different intensities of the conductivity peaks, Fig. 4d, f.

Low-density GQDs. In order to avoid the large number of GQDs to be connected in parallel, thus obscuring the Coulomb diamonds, hBN layer with a low density of graphene islands was prepared. To this end, we used a strongly diluted micellar solution to achieve a low concentration of H_2PtCl_6 : 1 mL of the PS-P4VP copolymer solution with H_2PtCl_6 was diluted by 400 mL of pure PS-P4VP. Such mixed solution was spin-coated on the SiO_2 substrate, and the micellar film was treated by oxygen plasma to produce Pt NPs. The hBN monolayer was transferred onto the Pt NPs/ SiO_2 substrate, and the conversion reaction was performed for conversion of hBN on Pt NPs to graphene. After the aqua

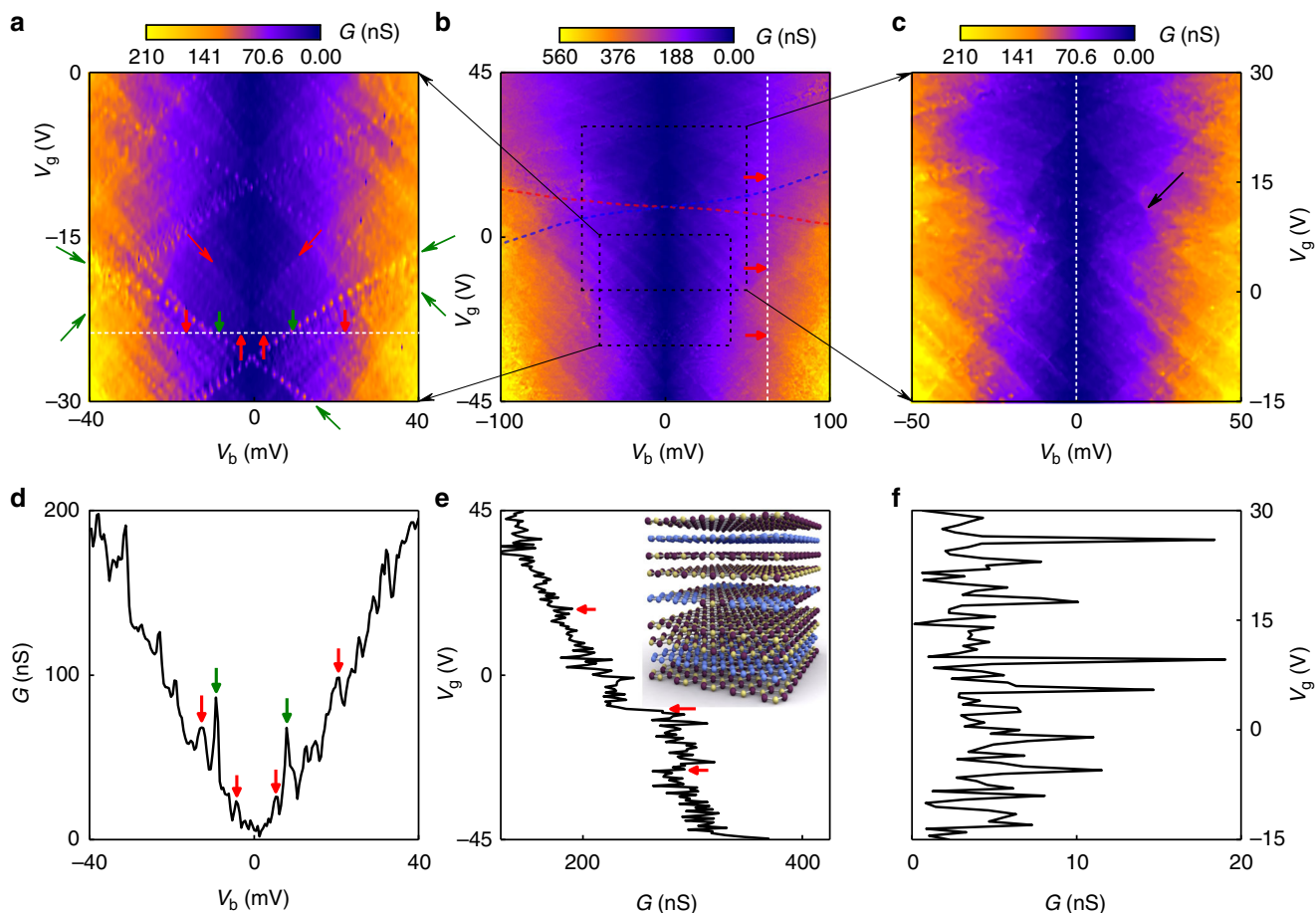


Fig. 4 Multi-channel single-electron tunnelling transistors based on the GQDs of 13 nm in size. **a** The low excitation measurements of low bias region of **b**. Thin and long green arrows indicate the tunnelling events through the localised states in the middle hBN layer. Thick and short arrows indicate the edges of the Coulomb diamonds (red), and the resonances from localised impurity states (green) crossing the white dashed line ($G(V_g = -24\text{V}, V_b)$, presented on **d**). **b** Conductance $G(V_g, V_b)$ measured at $T = 250\text{ mK}$. The red (blue) dashed line mark the event of the Fermi level in the top (bottom) graphene layer aligning with the Dirac point. Red arrows indicate the edges of the Coulomb diamonds crossing the white dashed line ($G(V_g, V_b = 63\text{ mV})$, presented on **e**). **c** The magnified plot of **b** denoting the peculiar shape of Coulomb diamonds when the Fermi level in one of the graphene contacts aligns with the Dirac point (black arrow). The dashed white line indicates the cross-section presented in **f**. **d** The plot of conductance $G(V_g = -24\text{V}, V_b)$ from **a**. Thick and short arrows indicate the same events as in **a**: the edges of the Coulomb diamonds (red), and the resonances from localised impurity states (green). **e** The conductance $G(V_g, V_b = 63\text{ mV})$ plot. Red arrows indicate the same events as in **b**: edges of the Coulomb diamonds. The inset shows the schematic structure of the van der Waals stack. Graphene contacts are separated by hexagonal boron nitride layers from the GQD-hBN layer. Carbon atoms are blue, boron—yellow, nitrogen—purple. **f** The conductance $G(V_g, V_b = 0\text{ mV})$ plot from **c** (marked by white dashed line)

regia treatment to remove Pt NPs, a GQD-hBN monolayer with a relatively long spacing (0.5–1.5 μm) between GQDs (Fig. 5a) was obtained. Note, that this method gives a non-uniform distribution of GQDs.

We used such hBN with a low density of GQDs to prepare single-electron tunnelling transistors 30 nm_hBN/Gr/2hBN/GQD-hBN/2hBN/Gr/20 nm_hBN as it has been described above (see inset to Fig. 4e). The conductance of one of such devices (with the active area of 30 μm^2) as a function of the gate and bias voltages is presented in Fig. 5b–d. Note, that the characteristic conductance for such a device is at least an order of magnitude smaller than that for devices with periodic, high-density arrays of GQDs (see the data presented on Fig. 4, note that the areas and the barrier thickness for these devices are the same). This is because the tunnelling now occurs through a smaller number of GQDs. At the same time, the Coulomb diamonds are visible much clearer in such devices (Fig. 5d) partly because of smaller number of overlapping Coulomb diamonds owing to smaller number of GQD, and partly because each GQD now act

independently, interacting only weakly with other GQDs, as the distance between them is larger than the distance to the gate.

Discussion

The schematics of the formation of the diamonds are presented in Fig. 6a–c and Supplementary Figures 11 and 12. When the size quantisation levels in the GQD are positioned outside of the bias window—no current flows through the quantum dots. At positive biases, a finite conductance is observed once the size quantisation level is below the Fermi level in the top graphene (such events are modelled by red lines in Fig. 6d) and above the Fermi level in the bottom graphene (modelled by blue lines in Fig. 6d). The combination of four of such lines gives a diamond of low conductivity. If the Fermi level in one of the graphene contacts is close to the Dirac point, where the density of states vanishes—the electrostatics dictates³⁰ that the edges of the diamonds will not be straight lines anymore and will have square root dependence in the $V_g - V_b$ coordinates (see Fig. 6d and the Supplementary Note 2

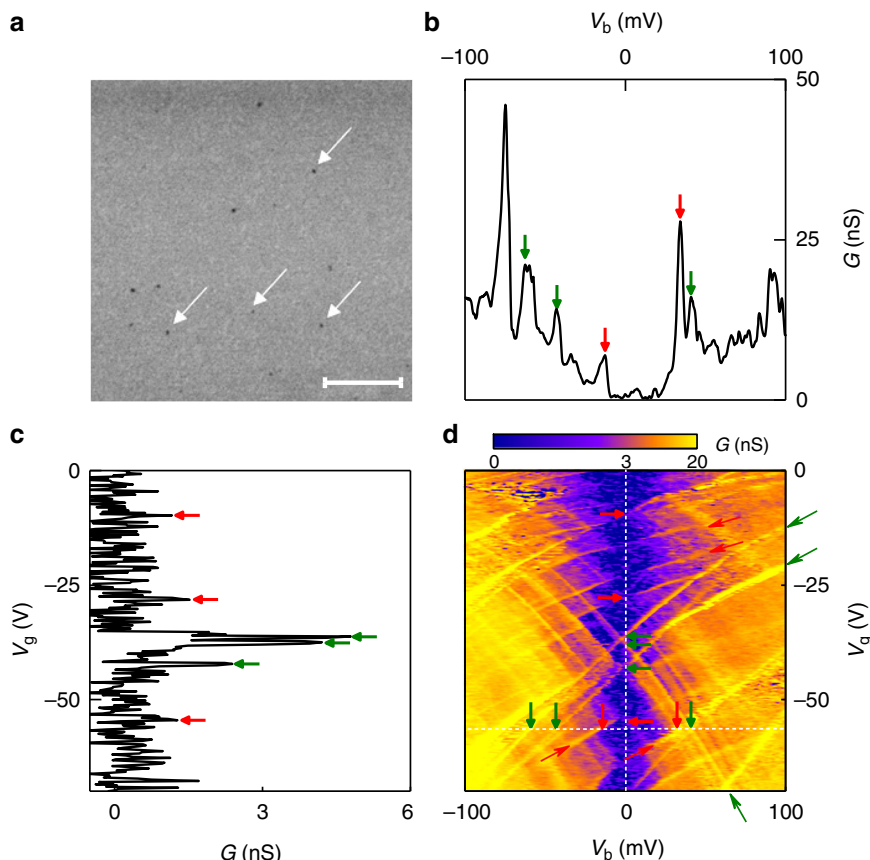


Fig. 5 Low-density non-periodic array of 10 nm QGDs embedded in hBN matrix and electron tunnelling transistors based on such QGDs. **a** SEM image of a QGD-hBN sample obtained after the transfer of hBN monolayer on Pt NPs/SiO₂ substrate and the conversion reaction. It shows QGDs with a long spacing (0.5–1.5 μm), marked by white arrows. Scale bar 1 μm. **b** The conductance $G(V_g = -56\text{V}, V_b)$ plot (extracted from **d** along the horizontal white dashed line). Arrows indicate peaks originating from boundaries of Coulomb diamonds (red) and from impurity-assisted tunnelling (green). **c** The conductance $G(V_g, V_b = 0\text{mV})$ plot (extracted from **d** along the vertical white dashed line). Arrows indicate peaks originating from boundaries of Coulomb diamonds (red) and from impurity-assisted tunnelling (green). **d** Conductance $G(V_g, V_b)$ for a device with aperiodic 10 nm QGDs measured at $T = 250\text{mK}$. Thick and short arrows indicate the crossing of the edges of the Coulomb diamonds (red arrows) and the impurity-assisted tunnelling peaks (green) with the white dashed lines. The positions of the arrows are the same as on **b** and **c**. Thin and long arrows indicate the edges of the Coulomb diamonds (red arrows) and the impurity-assisted tunnelling peaks (green arrows)

for the details of the model). Such events are indeed observed in our measurements (marked by the black arrow in Fig. 4c, also see Supplementary Note 2 and Supplementary Figure 10).

The width of the diamonds in V_b gives a characteristic charging energy required to place an extra electron into a quantum dot. Experimentally, the easiest way to determine the width of the diamonds is by taking constant bias cross-sections (such as presented in Fig. 4e) of the conductivity plot $G(V_g, V_b)$, where the edges of the diamonds are seen as distinct steps (marked by red arrows on Fig. 4b, e). The bias at which such steps disappear is then taken as the width of the diamonds. For our 13 nm (Fig. 4), 10 nm (Fig. 5) and 7 nm (Supplementary Figure 8a, b) quantum dots the charging energy was found to be of the order of $80 \pm 15\text{meV}$, $100 \pm 15\text{meV}$ and $160 \pm 20\text{meV}$, respectively, well in line with what is expected for the size quantisation for quantum dots of such a diameter^{36–38}. The fact that the size quantisation energy scales as expected with the size of the QGD serves as an additional argument that the tunnelling occurs through the states in the quantum dots.

Simultaneously with the characteristic diamonds, a few conductance peaks that approximately follow the square root behaviour have been observed. The square root behaviour is coming from the linear density of states in the graphene electrodes and

the fact that, owing to the small density of states the bottom graphene electrode does not entirely screen the electric field from the gate³⁹. We attribute these features to the tunnelling through localised states in the central QGD layer^{40,41}. Each localised state produces two lines in $G(V_g, V_b)$ —when it aligns with the Fermi level in the bottom and in the top graphene contacts. The energy positions of these lines can be fitted with very high precision (Fig. 6d). From such a fitting we can extract the energy position of the localised states with respect to the Dirac points in the graphene layers as well as their spatial positions in the barrier. Thus, we found that energetically all the localised states observed are situated in the range of $\pm 150\text{meV}$ in the vicinity of the Dirac points in the contacts. Our fitting also confirms that spatially all the localised states are indeed located in the central layer⁴² (hBN with QGDs). Note that it has been demonstrated that impurity states in the middle of the barrier contribute the strongest to the tunnelling current⁴³ (see Supplementary Figure 13 for examples of phonon- and impurity-assisted tunnelling). The number of localised states we can see in our devices is very low (between 3 and 6, depending on the particular device, see Supplementary Table 2) much lower than the number of the QGD observed. This suggests that the edges of our QGDs are well passivated and do not produce additional localised states.

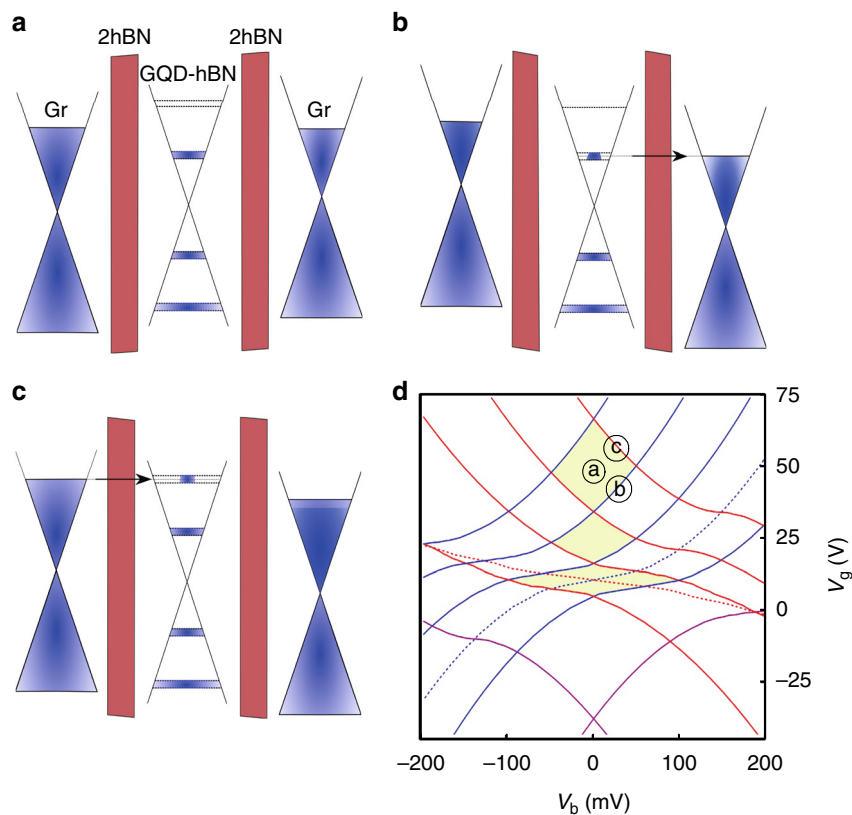


Fig. 6 Modelling of the single-electron charging effect. **a–c** Schematic representation of a single-electron charging effect. The corresponding electrostatic lines are denoted in **d**. **d** Modelling example of the alignment of the different energy levels in a device with 13 nm GQD (see Methods and Supplementary Notes 2 for the details of the modelling). Red (blue) dashed lines—Fermi level in top (bottom) graphene electrode aligning with the Dirac point. Purple lines—Fermi levels in the graphene contacts being aligned with the localised state located in the middle hBN layer with energy 140 meV below the Dirac point. The set of solid red (blue) lines correspond to single-electron energy levels in GQD aligning with the Fermi level in the top (bottom) electrode. Space between four of such lines forms a Coulomb blockade diamond. Note the distorted shape of the diamond when the Fermi level in the contacts passes through the Dirac points

In conclusion, we demonstrated a way of synthesis of GQDs embedded in the hBN matrix. Such GQDs exhibit a very low number of edge states. The geometry allows easy incorporation into van der Waals heterostructures, where we demonstrate single-electron tunnelling transistors. Our approach—the combination between the in-plane and van der Waals heterostructures—allows the fabrication of high-quality GQDs for transport experiments. The in-plane heterostructures allow fabrication of GQDs without the dangling bonds and localised states at the perimeter. At the same time, the van der Waals heterostructures allow fabrication of controlled tunnelling barriers, again without any localised states. We hope that our approach will pave the way for many other types of devices and physical phenomena to be studied.

Methods

The growth of GQDs embedded in the hBN sheet. The single layer of hBN was synthesised on Pt foil using ammonia borane as a precursor by the CVD method. Experimental details on the synthesis of CVD-grown hBN on Pt can be found in a previous report¹⁷. The Pt NPs array on a SiO₂ substrate was prepared using self-patterning diblock copolymer micelles¹⁸. A single layer of PS-P4VP micelles with H₂PtCl₆, a precursor for Pt NPs, in their cores was spin-coated on the SiO₂ substrate. To fabricate the Pt NP array, the micellar film on the SiO₂ was annealed at 400 °C for 30 min in air. The hBN layer was transferred onto the Pt NPs/SiO₂ substrate using a wet-transfer method (electrochemical delamination). Then, the hBN layer transferred on Pt NPs/SiO₂ was loaded into the centre of a vacuum quartz tube in a furnace for the conversion reaction¹⁶. The tube was pumped down to 0.21 Torr with pure argon gas (50 sccm). Then the furnace was heated to 950 °C in 40 min. During the reaction, methane gas (5 sccm) with argon (50 sccm) was

flowed as the source for graphene growth. During the reaction, the hBN region on the Pt NPs was converted to graphene, and after 10 min of growth, a uniform GQD array embedded in the hBN film was obtained.

Transfer method. The GQD-hBN film on Pt NPs/SiO₂ could be transferred to any other substrate via wet-transfer method using HF and an aqua regia solution. First, polystyrene (PS) was spin-coated on the sample, and it was immersed in an hydrogen fluoride solution (5% in deionised water) to detach the GQD-hBN film. The floating PS film was then transferred to the aqua regia solution (3:1 mixture of hydrochloric acid and nitric acid) to remove Pt NPs and then rinsed with copious amounts of DI water. Finally, the film was transferred onto the target substrate and PS was removed with toluene to obtain a GQD-hBN film on the substrate.

Characterisation. SEM (Verios 460, FEI) and atomic force microscopy (Dimension Icon, Bruker) were used to determine the surface morphology of the samples. Raman spectra were measured using a micro Raman spectroscope (alpha 300, WITec GmbH) using 532 nm. The UV-vis absorption spectra of the GQD-hBN samples were recorded on a Cary 500 UV-vis-near IR spectroscope, Agilent. XPS (K-Alpha, Thermo Fisher) and Nano-FTIR (neaSNOM, aspect) were performed to determine the composition of the GQD and confirm the formation of an interface between GQD and hBN. Low-voltage Cs aberration-corrected transmission electron microscopy (Titan Cube G2 60-300, FEI), operated at 80 kV with a mono-chromated electron beam, was used for EELS analysis. The spatial and energy resolutions for the EELS measurement are 2 nm and 1.5 eV, respectively.

Device fabrication. Optical images of the flakes at different stages of the fabrication process are presented on Supplementary Figure 14. The electrical response of the GQDs embedded in monolayer hBN was investigated by assembling vertical tunnel van der Waals heterostructures consisting of the stack of 30 nm_{hBN}/Gr/2hBN/GQD-hBN/2hBN/Gr/20 nm_{hBN} placed on an oxidised silicon wafer (300 nm of SiO₂). Here, the bottom and top layers of hBN were used for the

purpose of encapsulation. As the QGDs are embedded in the large area monolayer hBN on Si/SiO₂, the vertical heterostructure was assembled in two halves by adopting a mix of dry and wet flake transfer procedure: first, a stack of Si/SiO₂/30 nm_hBN/Gr/2hBN was prepared by standard flake exfoliation and dry transfer procedure. To prepare the other half, a stack of 2hBN/Gr/20 nm_hBN was prepared by the dry pick up procedure using a polymethyl methacrylate (PMMA) membrane. This stack on the membrane was aligned and dropped on the QGD-hBN/SiO₂/Si substrate. To release the stack from Si/SiO₂, 8% PMMA was spun on the sample and Si/SiO₂ was etched using potassium hydroxide (KOH) solution. The floated membrane was thoroughly rinsed with DI water several times to remove KOH residues from the membrane. Finally, to complete the device, this membrane containing QGD-hBN/2hBN/Gr/20 nm_hBN was dropped on the stack prepared in the first half.

For electrical characterisation of this vertical heterostructure, Cr/Au edge contacts were made on the top and bottom graphene layers using electron beam lithography followed by boron nitride etching, metal deposition and lift-off process. Electrical characterisation of graphene contacts is presented in Supplementary Figure 15. Additional tunnelling measurements with Coulomb diamonds clearly marked are presented in Supplementary Figure 16.

Data availability

The data that support the findings of this study are available from the corresponding author upon reasonable request.

Received: 5 April 2018 Accepted: 23 December 2018

Published online: 16 January 2019

References

- Stampfer, C. et al. Tunable Coulomb blockade in nanostructured graphene. *Appl. Phys. Lett.* **92**, 012102 (2008).
- Guttinger, J. et al. Electron-hole crossover in graphene quantum dots. *Phys. Rev. Lett.* **103**, 046810 (2009).
- El Fatimy, A. et al. Epitaxial graphene quantum dots for high-performance terahertz bolometers. *Nat. Nanotechnol.* **11**, 335–338 (2016).
- Ponomarenko, L. et al. Chaotic Dirac billiard in graphene quantum dots. *Science* **320**, 356–358 (2008).
- Hachiya, M. O., Burkard, G. & Egues, J. C. Nonmonotonic spin relaxation and decoherence in graphene quantum dots with spin-orbit interactions. *Phys. Rev. B* **89**, 115427 (2014).
- Volk, C. et al. Probing relaxation times in graphene quantum dots. *Nat. Commun.* **4**, 1753 (2013).
- Choi, S. H. Unique properties of graphene quantum dots and their applications in photonic/electronic devices. *J. Phys. D: Appl. Phys.* **50**, 103002 (2017).
- Stampfer, C. et al. Tunable graphene single-electron transistor. *Nano Lett.* **8**, 2378–2383 (2008).
- Ritter, K. A. & Lyding, J. W. The influence of edge structure on the electronic properties of graphene quantum dots and nanoribbons. *Nat. Mater.* **8**, 235–242 (2009).
- Levendorf, M. P. et al. Graphene and boron nitride lateral heterostructures for atomically thin circuitry. *Nature* **488**, 627–632 (2012).
- Sahoo, P. K., Memaran, S., Xin, Y., Balicas, L. & Gutierrez, H. R. One-pot growth of two-dimensional lateral heterostructures via sequential edge-epitaxy. *Nature* **553**, 63–67 (2018).
- Liu, Z. et al. In-plane heterostructures of graphene and hexagonal boron nitride with controlled domain sizes. *Nat. Nanotechnol.* **8**, 119–124 (2013).
- Geim, A. K. & Grigorieva, I. V. Van der Waals heterostructures. *Nature* **499**, 419–425 (2013).
- Novoselov, K. S., Mishchenko, A., Carvalho, A. & Castro Neto, A. H. 2D materials and van der Waals heterostructures. *Science* **353**, aac9439–aac9439 (2016).
- Huang, M. et al. Multifunctional high-performance van der Waals heterostructures. *Nat. Nanotechnol.* **12**, 1148–1154 (2017).
- Kim, G. et al. Catalytic conversion of hexagonal boron nitride to graphene for in-plane heterostructures. *Nano Lett.* **15**, 4769–4775 (2015).
- Kim, G. et al. Growth of high-crystalline, single-layer hexagonal boron nitride on recyclable platinum foil. *Nano Lett.* **13**, 1834–1839 (2013).
- Kim, S.-S. et al. Strain-assisted wafer-scale nanoporation of single-layer graphene by arrayed Pt nanoparticles. *Chem. Mater.* **27**, 7003–7010 (2015).
- Gorbachev, R. V. et al. Hunting for monolayer boron nitride: optical and Raman signatures. *Small* **7**, 465–468 (2011).
- Ding, X. L. Direct synthesis of graphene quantum dots on hexagonal boron nitride substrate. *J. Mater. Chem. C* **2**, 3717–3722 (2014).
- Cançado, L. et al. General equation for the determination of the crystallite size L_a of nanographite by Raman spectroscopy. *Appl. Phys. Lett.* **88**, 163106 (2006).
- He, J., Chen, K.-Q., Fan, Z.-Q., Tang, L.-M. & Hu, W. Transition from insulator to metal induced by hybridized connection of graphene and boron nitride nanoribbons. *Appl. Phys. Lett.* **97**, 239 (2010).
- Romanos, J. et al. Infrared study of boron-carbon chemical bonds in boron-doped activated carbon. *Carbon* **54**, 208–214 (2013).
- Lu, J., Gomes, L. C., Nunes, R. W., Neto, A. H. C. & Loh, K. P. Lattice relaxation at the interface of two-dimensional crystals: graphene and hexagonal boron-nitride. *Nano Lett.* **14**, 5133–5139 (2014).
- Withers, F. et al. Light-emitting diodes by band-structure engineering in van der Waals heterostructures. *Nat. Mater.* **14**, 301–306 (2015).
- Khestanova, E., Guinea, F., Fumagalli, L., Geim, A. K. & Grigorieva, I. V. Universal shape and pressure inside bubbles appearing in van der Waals heterostructures. *Nat. Commun.* **7**, 12587 (2016).
- Liu, X. M., Watanabe, K., Taniguchi, T., Halperin, B. I. & Kim, P. Quantum Hall drag of exciton condensate in graphene. *Nat. Phys.* **13**, 746–748 (2017).
- Britnell, L. et al. Field-effect tunneling transistor based on vertical graphene heterostructures. *Science* **335**, 947–950 (2012).
- Britnell, L. et al. Resonant tunnelling and negative differential conductance in graphene transistors. *Nat. Commun.* **4**, 1794 (2013).
- Mishchenko, A. et al. Twist-controlled resonant tunnelling in graphene/boron nitride/graphene heterostructures. *Nat. Nanotechnol.* **9**, 808–813 (2014).
- Wallbank, J. R. et al. Tuning the valley and chiral quantum state of Dirac electrons in van der Waals heterostructures. *Science* **353**, 575–579 (2016).
- Wang, L. et al. One-dimensional electrical contact to a two-dimensional material. *Science* **342**, 614–617 (2013).
- Vdovin, E. E. et al. Phonon-assisted resonant tunneling of electrons in graphene-boron nitride transistors. *Phys. Rev. Lett.* **116**, 186603 (2016).
- De Franceschi, S. et al. Single-electron tunneling in InP nanowires. *Appl. Phys. Lett.* **83**, 344–346 (2003).
- Britnell, L. et al. Electron tunneling through ultrathin boron nitride crystalline barriers. *Nano Lett.* **12**, 1707–1710 (2012).
- Chen, H. Y., Apalkov, V. & Chakraborty, T. Fock-Darwin states of Dirac electrons in graphene-based artificial atoms. *Phys. Rev. Lett.* **98**, 186803 (2007).
- Zhang, Z. Z., Chang, K. & Peeters, F. M. Tuning of energy levels and optical properties of graphene quantum dots. *Phys. Rev. B* **77**, 5 (2008).
- Zarenia, M., Pereira, J. M., Chaves, A., Peeters, F. M. & Farias, G. A. Simplified model for the energy levels of quantum rings in single layer and bilayer graphene. *Phys. Rev. B* **81**, 045431 (2010).
- Li, L. H., Tian, T., Cai, Q., Shih, C.-J. & Santos, E. J. G. Asymmetric electric field screening in van der Waals heterostructures. *Nat. Commun.* **9**, 1271 (2018).
- Chandni, U., Watanabe, K., Taniguchi, T. & Eisenstein, J. P. Evidence for defect-mediated tunneling in hexagonal boron nitride-based junctions. *Nano Lett.* **15**, 7329–7333 (2015).
- Chandni, U., Watanabe, K., Taniguchi, T. & Eisenstein, J. P. Signatures of phonon and defect-assisted tunneling in planar metal-hexagonal boron nitride-graphene junctions. *Nano Lett.* **16**, 7982–7987 (2016).
- Greenaway, M. T. et al. Tunnel spectroscopy of localised electronic states in hexagonal boron nitride. *Commun. Phys.* **1**, 94 (2018).
- Roche, I. P. et al. Impurity-assisted tunneling as a probe of the donor wavefunction in n-GaAs. *J. Phys. Condes. Matter* **2**, 4439–4454 (1990).

Acknowledgements

This work was supported by the research fund (NRF-2017R1E1A1A01074493), the IBS (IBS-R-019-D1) and the grant (CASE-2013M3A6A5073173) from the centre for Advanced Soft Electronics under the Global Frontier Research Program through the National Research Foundation by the Ministry of Science and ICT, Korea., EU Graphene Flagship Program, European Research Council Synergy Grant Hetero2D, the Royal Society, Engineering and Physical Research Council (UK), US Army Research Office (W911NF-16-1-0279). S.O. acknowledges Ph.D. studentship from EPSRC funded Graphene NOWNANO CDT. J.Y. and Ar.M. acknowledges the support of EPSRC Early Career Fellowship EP/N007131/1.

Author contributions

G.K., K.S.N. and H.S.S. designed this work. G.K., S.-S.K, J.J., Y.-J.K. and A.-R.J. prepared QGDs-hBN samples. S.I.Y. and S.H. contributed to XPS and UV-vis absorption measurements and Y.J.C. and H.-J.C. performed Nano-FTIR measurement. Ab.M. and M.H. prepared vertical heterostructures. S.O., J.Y., D.G. and Ar.M. performed transport measurements. D.V.A. characterised vertical heterostructures. H.Y.J. performed TEM and EELS measurements. G.K., A.K.G., K.S.N., B.-H.S. and H.S.S. performed data analysis, coordinated the project and wrote the manuscript.

Additional information

Supplementary Information accompanies this paper at <https://doi.org/10.1038/s41467-018-08227-1>.

Competing interests: The authors declare no competing interests.

Reprints and permission information is available online at <http://npg.nature.com/reprintsandpermissions/>

Journal peer review information: *Nature Communications* thanks the anonymous reviewers for their contribution to the peer review of this work.

Publisher's note: Springer Nature remains neutral with regard to jurisdictional claims in published maps and institutional affiliations.



Open Access This article is licensed under a Creative Commons Attribution 4.0 International License, which permits use, sharing, adaptation, distribution and reproduction in any medium or format, as long as you give appropriate credit to the original author(s) and the source, provide a link to the Creative Commons license, and indicate if changes were made. The images or other third party material in this article are included in the article's Creative Commons license, unless indicated otherwise in a credit line to the material. If material is not included in the article's Creative Commons license and your intended use is not permitted by statutory regulation or exceeds the permitted use, you will need to obtain permission directly from the copyright holder. To view a copy of this license, visit <http://creativecommons.org/licenses/by/4.0/>.

© The Author(s) 2019