

ARTICLE

p.G970D is the most frequent *CFTR* mutation in Chinese patients with cystic fibrosis

Xinlun Tian^{1,3}, Yaping Liu^{2,3}, Jun Yang^{2,3}, Han Wang², Tao Liu¹, Wenbing Xu¹, Xue Li¹, Yuanjue Zhu¹, Kai-Feng Xu¹ and Xue Zhang²

Cystic fibrosis (CF), the most common life-threatening autosomal recessive disorder in Caucasians, is caused by mutations in CF transmembrane conductance regulator gene (*CFTR*). We and others previously identified *CFTR* mutations in 20 Chinese patients with CF. In this study, eight Chinese patients with a clinical diagnosis of suspected CF were newly collected and screened for *CFTR* mutations using a combination of conventional Sanger sequencing and multiplex ligation-dependent probe amplification (MLPA) analysis. The *CFTR* mutations observed in Chinese CF patients, both reported previously and identified in the present study, were also summarized. In the newly collected patients, we identified 10 different *CFTR* mutations, including p.F508del, the most common CF-causing mutation in Caucasians, and three novel mutations (p.V1212Afs*15; p.L666* and p.A969A). Most notably, the previously reported p.G970D mutation was found in six patients, making it the most frequent *CFTR* mutation identified in Chinese CF patients thus far. In conclusion, we detected p.F508del for the first time, identified additional novel *CFTR* mutations and recorded the most frequent CF-causing mutation in Chinese CF patients.

Human Genome Variation (2016) 3, 15063; doi:10.1038/hgv.2015.63; published online 7 January 2016

INTRODUCTION

Cystic fibrosis (CF, MIM #219700), which is inherited in an autosomal recessive pattern, is the most frequent lethal genetic disorder among Caucasians, with a prevalence of ~1/2,500. The incidence of CF varies dramatically among different races. Only a few reliable estimates of the incidence in Asians are available, one of which indicates an estimated incidence of CF in Asian Pacific Islanders living in Hawaii of 1 in 90,000,¹ while the other two reports indicate an estimated incidence of CF in Japan of 1 in 350,000.^{2,3} CF is a highly variable disorder. The classic phenotypic expression of CF includes recurrent pulmonary disease, an increased sweat chloride concentration ($[Cl^-] > 60$ mmol/l), and pancreatic insufficiency (PI). Approximately 60% of all CF patients are diagnosed before 12 months of age and 90% by 10 years of age. However, some adults can present with mild or incomplete phenotypes of CF, without clinical, chemical or histological evidence of pancreatic disease; these cases have been variably referred to as non-classic, pancreatic sufficiency (PS), intermediate, borderline or atypical forms of CF.⁴

CF is caused by mutations in the CF transmembrane conductance regulator gene (*CFTR*, MIM #602421), which is expressed by most epithelial cells. *CFTR* is composed of 27 exons spanning 189 kb of DNA, encoding a protein of 1,480 amino acids. *CFTR* functions as a chloride channel. A sodium and chloride ion transport defect in the epithelial cells lining the airways of the lungs and in the sweat glands of CF patients is the fundamental defect observed in CF.⁵ Approximately 2,000 mutations in the *CFTR* gene have been identified thus far, and this number is continuously updated within the Cystic Fibrosis Genetic Analysis Consortium (CFGAC) database.⁶ All types of mutations, including missense and nonsense mutations, splicing, small and large rearrangements, frameshift and in-frame deletions/insertions, have been observed in CF patients. One mutation, p.F508del,

has been found to occur in ~70% of the *CFTR* alleles of Caucasian CF patients.⁷ However, its frequency varies considerably among human populations. Apart from p.F508del, ~20 mutations occur with a frequency >0.1%, together accounting for ~15–20% of the CF alleles of Caucasians. The effects of these mutations on *CFTR* function have been grouped into six classes: defective synthesis (Class I); defective protein processing and trafficking (Class II); defective regulation or gating (Class III); defective chloride conductance (Class IV); reduced synthesis or trafficking (Class V); and decreased stability (Class VI).⁸ Complete loss of functional *CFTR* results in classic CF, and Class I–III mutations are, therefore, generally prone to cause classic CF phenotypes, which are associated with PI, severe lung dysfunction, an increased incidence of malnutrition, and earlier mortality. Mutations that alter, but which do not abolish, the function of *CFTR* can give rise to mild or non-classic CF, and thus, Class IV–V mutations are usually associated with non-classic CF phenotypes with milder lung disease, longer survival and PS.⁹

We and others have previously reported 20 CF patients of Chinese origin with *CFTR* mutations.¹⁰ In the present study, we collected data from eight additional Chinese patients with a clinical diagnosis of suspected CF and performed sequencing of *CFTR* to identify pathogenic mutations and to confirm the diagnosis of CF. We also conducted a systematic literature review^{11–20} to summarize the mutation spectrum in Chinese CF patients.

MATERIALS AND METHODS

Patients and evaluation of clinical data

We collected data from eight CF patients at Peking Union Medical College Hospital (PUMCH). All of the patients were suspected of having CF, showing sweat chloride levels >60 mmol/l. The sweat tests were

¹Department of Respiratory Medicine, Peking Union Medical College Hospital, Beijing, China and ²McKusick-Zhang Center for Genetic Medicine, State Key Laboratory of Medical Molecular Biology, Institute of Basic Medical Sciences, Chinese Academy of Medical Sciences & Peking Union Medical College, Beijing, China.

Correspondence: X Zhang (xuezhang@pumc.edu.cn)

³These authors contributed equally to this work.

Received 15 September 2015; revised 20 October 2015; accepted 20 October 2015

conducted following the protocol described in detail in our previous study.¹⁰ All subjects signed an informed consent form allowing anonymous use of their DNA samples and clinical data for research purposes. The protocol of this study was approved by the Institutional Review Board committee at PUMCH.

DNA extraction and identification of mutations

Genomic DNA was extracted from whole-blood samples. To detect *CFTR* gene mutations, we subjected all 27 exons and the intronic boundaries to PCR-Sanger sequencing. PCR was performed under the following conditions: initial denaturation at 94 °C for 3 min, followed by 35 cycles of 94 °C for 30 s, 60 °C for 30 s and 72 °C for 30 s. The list of primer pairs used for PCR was reported previously.¹⁰ The Sanger sequencing results were analyzed using CodonCode Aligner Software (CodonCode Aligner Corporation; Centerville, MA, USA). The presence of large *CFTR* rearrangements was tested in all 27 *CFTR* exons using a commercial kit (MLPA SALSA kit; MRC-Holland, Amsterdam, The Netherlands) and the generated results were analyzed with Coffalyser software (MRC-Holland, Amsterdam, The Netherlands).

Generation of minigene constructs

The identified synonymous variant of c.2907A>C (p.A969A) is located in the neighboring region of the splicing donor site of intron 7. To study the effect of this variant on the splicing pattern, a DNA fragment of 951 bp encompassing exon 17 and the flanking intronic sequences of *CFTR* was directly amplified from the genomic DNA of a CF patient heterozygous for this variant (c.2907A>C; p.A969A). The primers (Minigene-F/R) used for the generation of the minigene constructs are listed in Supplementary Table 1. Each PCR product was digested with the *BglII* and *MluI* restriction enzymes and cloned into the pCAS2 vector, which had also been digested with *BamHI* and *MluI*²¹ (Figure 2a). All of the selected clones were sequenced, and the verified clones, referred to as the wild-type (pCFTR-c.2907A) and mutant (pCFTR-c.2907C) clones, were retained for expression experiments.

Cell culture and minigene splicing assay

HEK 293T cells were grown in a 5% CO₂ incubator at 37 °C in Dulbecco's modified Eagle's medium (Union cell resource center) supplemented with 10% fetal bovine serum (Gibco). HEK 293T cells that had been seeded at 30% confluence in 60 mm dishes 16 h before transfection were transfected with 8 µg of pCFTR-c.2907A, pCFTR-c.2907C and the empty pCAS2 vector using Lipofectamine 2000 (Invitrogen, Carlsbad, CA, USA). Twenty-four hours after transfection, cells were collected and total RNA was extracted using TRIzol (Invitrogen). Then, 1.5 µg of total RNA was reverse transcribed using a Reverse Transcription System (Promega, Madison, WI, USA), according to the manufacturer's instructions. Following RNA retrotranscription, 400 ng of complementary DNA from the three constructs mentioned above was PCR amplified using the primers (reverse transcriptase-PCR-F/R) shown in Supplementary Table 1. The PCR products were then separated on a 2% agarose gel, and individual bands were excised and sequenced using specific primers (SEQprimer-F/R) (Supplementary Table 1).

RESULTS

Clinical data for eight CF patients in PUMCH

All eight patients were of Chinese Han origin, and none of them had a family history of intermarriage with Caucasians. The concentration of chloride in all eight patients' sweat ranged from 62–140 mmol/l (109.1 ± 25.0 mmol/l). The age at diagnosis ranged from 1 to 22 years (median age, 14 years). The age of symptom onset ranged from newborn to 14 years of age (median age, 1 year). Three of the patients were male (37.5%), and three of the patients (Case C3, C6 and C7) had or might have had a family history of CF. Nearly all patients exhibited diffuse bronchiectasis predominantly affecting the upper lobes of the lung. Three patients (C4, C6 and C8) had allergic bronchopulmonary aspergillosis. Only one patient (C2) showed a positive result of Sudan III staining of the stool and was defined as having PI. Two patients (cases C1 and C3) were suspected of having PI, who manifested with recurrent diarrhea and suspected meconium

ileus, respectively, but lacked abnormal Sudan III results for the stool (Table 1). Two patients (cases C7 and C8) exhibited severe growth retardation, with a weight below the third percentile, and their heights were below the third percentile and between the tenth and twenty-fifth percentiles, respectively, according to the same age-standardized growth curve data for Chinese children.²² However, neither patient showed a positive stool Sudan III result in at least two separate tests. The body mass indexes of the two adult patients (cases C1 and C6) were only between 16.1 and 17.2, and these patients exhibited negative stool Sudan III results. The detailed clinical manifestations of the patients are shown in Table 1.

CFTR mutations identified in the present study

All eight newly identified patients underwent screening for mutations in *CFTR* coding regions and flanking sequences using direct Sanger sequencing or multiplex ligation-dependent probe amplification (MLPA). All of the patients were compound heterozygotes for *CFTR* mutations, except for case C5, in whom only one mutation was detected. In total, we identified 10 different mutations, including 3 novel mutations (c.3635delT/p.V1212Afs*15; c.1997T>G/p.L666*; c.2907A>C/p.A969A); c.1521_1523delCTT/p.F508del was found in one case in a heterozygous state; and c.2909G>A/p.G970D was detected in six cases (Table 1, Figure 1). The seven known mutations detected are uncommon *CFTR* mutations according to both the Human Gene Mutation Database (HGMD)²³ and CFGAC, with all of these mutations occurring in fewer than six reports, except for p.F508del.

Impact of the c.2909A>C mutation on CFTR mRNA splicing

Following transient transfection of the wild-type (pCFTR-c.2907A) and mutant (pCFTR-c.2907C) plasmids into HEK293 cells, mRNA analysis was performed via reverse transcriptase-PCR, and direct mRNA sequencing was carried out using specific primers (Supplementary Table 1). Electrophoresis on a 2% agarose gel showed two fragments: a normally spliced fragment with exon 17 and an aberrantly spliced fragment with exon 17 skipping (Figure 2b). The sequencing traces presented in Figure 2c showed two different fragments: the 717-bp fragment represents normal splicing with the complete exon 17; and the 466-bp fragment represents abnormal splicing, skipping exon 17.

DISCUSSION

CF is a highly allelically heterogeneous genetic disorder, for which ~2,000 putative disease-causing mutations have been reported to the CFGAC. p.F508del is the most commonly identified CF mutation, occurring in ~70% of the *CFTR* genes of CF patients. However, its frequency varies considerably among human populations. The highest frequency observed in Northern Europeans corresponds to 75–88% of CF alleles, while the frequency in Southern Europeans is 50–60%.⁷ In non-Caucasian CF patients, individuals of African descent living in the United States carry the p.F508del allele at a frequency of 48%, probably due to admixture.²⁴ Because of a misconception that CF is prevalent only in Caucasians, only a few studies on *CFTR* mutations have been carried out in Chinese CF patients, and p.F508del has never been previously reported in this group. In the present study, we detected the p.F508del mutation for the first time in one of our patients. The p.F508del mutation is a relatively ancient mutation, arising more than 52,000 years ago in Europe.²⁵ Almost all F508del alleles occur within a (TG)10-T9 haplotype, which is quite rare in Asian populations. We also examined the (TG)m-Tn haplotype in intron 9 of *CFTR* in our patients (Table 1) and observed that in patient C1, F508del was present in the (TG) 10-T9 haplotype inherited from his mother. In fact, this is not the first time that p.F508del in *CFTR* has been detected in a Chinese

Table 1. Clinical data and characteristics of *CFTR* gene mutations in eight Chinese CF patients examined in the current study

Case	C1	C2	C3	C4	C5	C6	C7	C8
Age at diagnosis	20	15	1	13	15	22	4	13
Gender	M	F	F	M	M	F	F	F
Age at onset of symptom	Several months	12 Years	4 Months	1 Year	14 Years	12 Years	3 Months	12 Years
Wt/Ht(kg/m)	52/1.74	42/1.65	8/NA	48/1.6	55/1.78	45/1.67	11/0.93	32/1.49
Family history	None	None	Yes	None	Yes	Yes	None	None
Sweat test [Cl ⁻] (mmol/l)	137	140	108.4	95.2	106.5	101.9	122.1	62
Gastrointestinal symptoms	Recurrent diarrhea, marasmus	Marasmus	Recurrent diarrhea; Meconium ileus suspected	None	None	Marasmus	Malnutrition	Malnutrition
Comorbidity	None	None	None	ABPA	None	ABPA	None	ABPA
Pulmonary function test	FEV1 43.6% PRED FEV1/FVC 56.96%	Not available	Not available	FEV1 61.4% PRED FEV1/FVC 74.5%	FEV1 81.7% PRED FEV1/FVC 77.01%	FEV1 30.2% PRED FEV1/FVC 47.98%	Not available	FEV1, 72.9% PRED FEV1/FVC 69.48% ABPA
Diagnosis before CF confirmation	Bronchiectasis	Bronchiectasis	Bartrter Syndrome	Bartrter Syndrome and bronchiectasis	Bronchiectasis	Bronchiectasis	Bronchiectasis	
PS/PI	PI suspected	PI Positive	PI suspected	PS Negative	PS Negative	PS Negative	PS Negative	PS Negative
Sudan III Staining	Negative	Negative	Negative	Negative	Negative	Negative	Negative	Negative
Sputum culture	Pseudomonas Aeruginosa	Pseudomonas Aeruginosa	Pseudomonas Aeruginosa and Methicillin Resistant Staphylococcus Epidermidis	Pseudomonas Aeruginosa	Pseudomonas Aeruginosa	Escherichia coli (extended-spectrum beta-lactamase+) and Pseudomonas Aeruginosa	Pseudomonas Aeruginosa	Negative
<i>CFTR</i> allele 1								
Nucleotide change	c.2909G>A	c.2909G>A	c.2909G>A	c.3700A>G	c.3635delT^a	c.2909G>A	c.2909G>A	c.2909G>A
Amino acid change	p.G970D	p.G970D	p.G970D	p.I1234V	p.V1212Afs*15	p.G970D	p.G970D	p.G970D
<i>CFTR</i> allele 2								
Nucleotide change	c.1521_1523delCTT	c.2374C>T	c.2125C>T	c.959-960insA	not detected ^b	c.1997T>G^a	c.263T>G	c.2907A>C^a
Amino acid change	p.F508del	p.R792*	p.R709*	p.S321Ifs*42	NA	p.L666*	p.L88*	p.A969A (ΔE17 p.N886Kfs*4)

Abbreviations: ABPA, allergic bronchopulmonary aspergillosis; CF, cystic fibrosis; *CFTR* RefSeq, NM_000492.3; F, female; FEV1, forced expiratory volume in 1s; FVC, forced vital capacity; M, male; NA, not applicable; PI, pancreatic insufficiency; pred, predicted; PS, pancreatic sufficiency; ^aNovel mutation (shown in bold) identified in the present study. ^bPerformed MLPA.

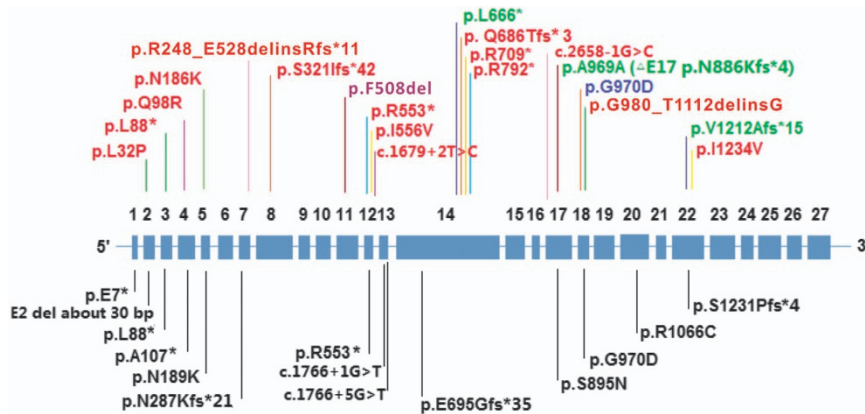


Figure 1. *CFTR* mutation spectrum in Chinese patients with CF. Upper panel: *CFTR* mutations identified in our current (eight CFs) and previous (seven CFs) (#14–20, as in Table 2) samples of Chinese CF patients collected at PUMCH. The three novel mutations identified in the current study are highlighted in green; the most common mutation found in Chinese CF patients thus far is highlighted in blue; the most common mutation found in Caucasian CF patients is highlighted in purple. Lower panel: *CFTR* mutations identified in previous studies (#1–13 as in Table 2) in Chinese patients with CF. The *CFTR* gene is shown with rescaled exons and minimized introns, and is not drawn to scale. CF, cystic fibrosis; PUMCH, Peking Union Medical College Hospital.

population; it has previously been reported that p.F508del in *CFTR* occurs in *CFTR*-related disorders such as CBAVD (congenital bilateral absence of vas deferens) in the Chinese population with a very low frequency.²⁶

In the present study, three novel mutations were identified: c.3635delT, p.V1212Afs*15; c.1997T>G, p.L666* and c.2907A>C

and p.A969A/ΔE17 p.N886Kfs*4, which are all predicted to lead to truncated proteins. These mutations are highly likely to have pathogenic potential, although there is currently no evidence from functional testing to support this possibility.

In the present study, six CF patients were found to carry the p.G970D mutation, which exhibited the highest frequency of 37.5%

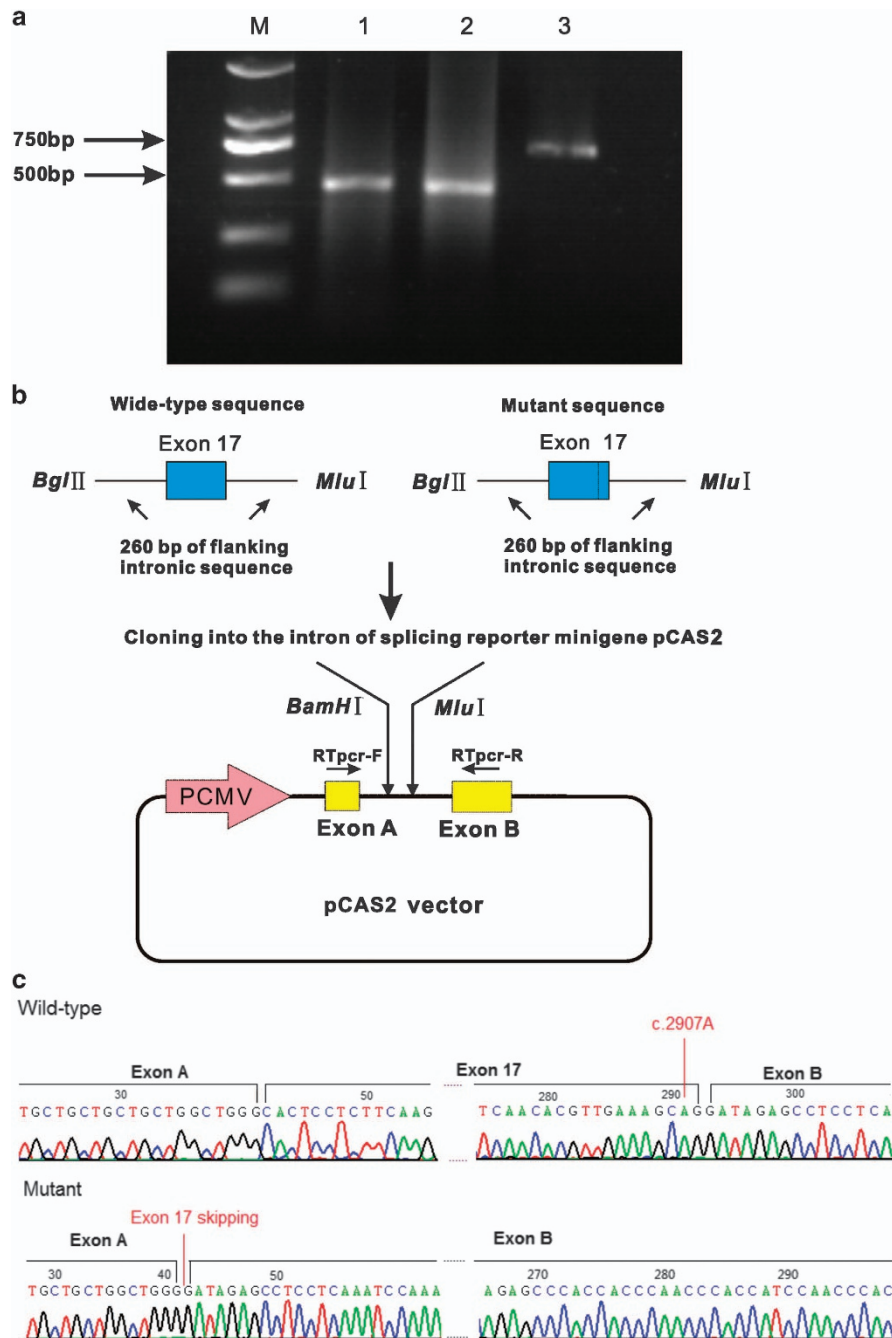


Figure 2. Impact of the c.2907A>C mutation on the *CFTR* splicing pattern. (a) The wild-type and the mutant exonic sequences of exon 17 of *CFTR* were PCR amplified from patient genomic DNA, together with ~260 bp of their 5' and 3' intronic flanking sequences, using specific primers carrying 5' tails with *Bgl*II and *Mlu*I restriction sites. The amplicons are cloned into the pCAS2 reporter vector, which is based on the pcDNA3.1 plasmid and contains a minigene composed of exon A and exon B. (b) A 2% agarose gel showing the different fragments of cDNA obtained using specific primers with total cDNA for each plasmid construct. Lanes 2, 3 and 4 represent three independent transfections of the empty, mutant (c.2907 C) and wild-type (c.2907A) constructs. Lane 1 contains the DL 2000 DNA marker (M). Two fragments are visible: the wild-type fragment, showing normal splicing with exon 17 (717 bp); and the mutant fragment, in which exon 17 is skipped (466 bp). (c) Sequencing traces of the 717 bp fragment (wild-type), with normal splicing, and the 466 bp fragment (mutant), in which exon 17 is skipped.

(6/16) in our Chinese CF patients. Previously, p.G970D had been reported in Chinese CF patients in three independent studies (Table 2), at a frequency of 7.5% (3/40). Considering these results together, p.G970D is the most frequent mutation that has been identified in Chinese CF patients, with a frequency of 16.1% (9/56) (Tables 1 and 2). p.G970D was first identified by Wagner JA in 1999¹⁵ and the same patient was later revisited by Wine JJ in

2001 in an ethnically heterogeneous population.²⁷ This patient who was assessed in these two studies was of Chinese origin. Therefore, to our knowledge, p.G970D has only been identified in Chinese CF patients thus far. The recurrence of p.G970D is likely to be due to a founder effect. We explored this possibility by analyzing the haplotypes created by a set of SNPs on chromosomes bearing p.G970 or p.D970. Within an interval of

Table 2. Characteristics of *CFTR* gene mutations in Chinese CF patients in the available published literature

Case	<i>CFTR</i> allele 1		<i>CFTR</i> allele 2	
	Nucleotide change	Amino acid change	Nucleotide change	Amino acid change
1 (ref. 9)	E2 del about 30 bp	NA	NA	NA
2 (ref. 10)	c.1766+5G>T	NA	NA	NA
3 (ref. 11)	c.1766+5G>T	NA	c.1766+5G>T	NA
4 (ref. 12)	c.1766+1G>T	NA	NA	NA
5 (ref. 13)	c.319–326delGCTTCCTA	p.A107X	c.2909G>A	p.G970D
6 (ref. 14)	c.1766+5G>T	NA	c.2083dupG	p.E695GfsX35
7 (ref. 14)	c.1766+5G>T	NA	c.2684G>A	p.S895N
8 (ref. 15)	c.19G>T	p.E7X	c.2083dupG	p.E695GfsX35
9 (ref. 15)	c.1766+5G>T	NA	c.2684G>A	p.S895N
10 (ref. 16)	c.1657C>T	p.R553X	c.1657C>T	p.R553X
11 (ref. 17)	c.567C>A	p.N189K	c.3691delT	p.S1231PfsX4
12 (ref. 18)	c.263T>G	p.L88X	c.2909G>A	p.G970D
13 (ref. 18)	c.3196C>T	p.R1066C	c.3196C>T	p.R1066C
14 (ref. 8)	c.293A>G	p.Q98R	c.293A>G	p.Q98R
15 (ref. 8)	c.95T>C	p.L32P	c.1657C>T	p.R553X
16 (ref. 8)	c.293A>G	p.Q98R	c.558C>G	p.N186K
17 (ref. 8)	c.2052 dupA	p.Q686TfsX3	ΔE18-E20 (c.2909–?_3367+?del)	p.G980_T1112 delinsG
18 (ref. 8)	c.2909G>A	p.G970D	ΔE7-E11 (c.744–?_1584+?del)	p.R248_E528 delinsRfsX11
19 (ref. 8)	c.1666A>G	p.I556V	Not detected	NA
20 (ref. 8)	c.1679+2T>C	NA	c.2658-1G>C	NA

Abbreviations: CF, cystic fibrosis; NA, not applicable.

~150 Kb, harboring p.G970D in the center, we detected an identical haplotype carrying p.D970 in six trios from the current study. Therefore, we cannot exclude the possibility of a founder effect, in spite of the fact that the six families all came from different regions of China (data not shown).

p.G970D, located within the third cytoplasmic loop of *CFTR*, impairs chloride conductance. This leads to partial function of *CFTR*,¹⁵ allowing us to group it within the category of Class IV mutations, which are generally associated with mild CF phenotypes (e.g., PS).⁸ In a total of nine cases carrying p.G970D (Tables 1 and 2), each of the patients also carried a nonsense, frameshift or deletion mutation, all of which belong to the Class I or II mutations, generally causing severe CF phenotypes (e.g., PI).⁸ Considering that Class IV mutations are phenotypically dominant when they occur in combination with class I–III mutations,⁹ we expected these nine p.G970D-carriers to present a mild CF phenotype (i.e., PS). However, three of the nine p.G970D-carriers (Tables 1 and 2) were suspected of having PI.^{15,20} This inconsistency could be explained by the fact that general tendencies⁸ are only expected to apply to patient populations, and not to individuals.²⁸

In addition to two mutations (p.F508del, p.R553*) included in the Caucasian screening panel, as shown in Tables 1 and 2, the limited numbers of studies in Chinese CF patients have indicated that all of the other mutations are only found in Asian populations, with certain mutations predominantly being detected in Chinese patients.²³ Together, these studies demonstrate that Chinese populations exhibit a unique CF mutation spectrum, consistent with our previous statement.¹⁰ For most of the mutations listed in Tables 1 and 2, we did not find any concrete data that would allow these mutations to be classified based on their biological consequences after carefully checking the literature and the CFTR2 database.²⁹ We then roughly estimated that 16 of 28 CF Chinese patients might carry one Class I or II (classic) mutation in combination with one Class III–V (mild) mutation according to the rules for categorizing *CFTR* mutations.⁸ As suggested by Ferec,⁹

these patients would be expected to present with PS more commonly than PI. The fact that 5/16 of the patients presented with PI again emphasized that general dispositions should not be used to make individual prognostic predictions. As a matter of fact, the potential for a mutation to produce clinical disease depends on multiple factors, including the type of mutation, the molecular mechanism at the cellular level and many others. Moreover, it is well-known that the presence of modifier genes in CF may benefit or harm its clinical outcome,³⁰ which could explain the variability of the CF phenotype observed in CF patients with similar genotypes.

Classic CF is determined as a childhood disease characterized by chronic lung disease, sinusitis, nasal polyposis, PI that causes malnutrition, chronic diarrhea, meconium ileus, rectal prolapse and elevated [Na⁺]_s and [Cl⁻]_s in sweat, while atypical CF is a milder form of CF disorder. Individuals with atypical CF might only exhibit dysfunction of one system, which may be much milder compared with the classic type. In a previous study,¹⁰ we suspected Chinese CF patients of exhibiting the atypical rather than the classic form of CF because only a small proportion of the patients presented with gastrointestinal symptoms; more than half of our patients exhibited allergic bronchopulmonary aspergillosis, which is far beyond the prevalence reported for Caucasians.¹⁰ Our phenotypic speculation regarding Chinese CF patients was also based on the known correlation between the *CFTR* genotype and the CF phenotype, which indicates that patients with atypical CF usually carry one severe mutation and one less common mutation.³¹ However, among all the 15 patients diagnosed at our center (including our previous reports¹⁰), 6 of the 15 CF patients (40%) were suspected of having PI, and more than half of our patients (8/15) exhibited growth retardation or marasmus. Allergic bronchopulmonary aspergillosis was slightly less common in the present group (3/8) compared with our previous study (4/7).¹⁰ Taken together, such results suggest that the phenotypic prediction made for Chinese CF patients in our previous study might be not correct, or at least it is too early to

make this prediction. The atypical clinical manifestations of Chinese patients may be due to selection bias, or to low awareness of the disease in China, or to a lack of sensitive testing methods for pancreatic exocrine insufficiency. In the future, as we collect more CF patients in China, we might be more confident in summarizing the phenotypic spectrum of Chinese CF patients.

In conclusion, we have identified several *CFTR* mutations, some of which are novel (p.V1212Afs*15; p.L666* and p.A969A), while one is frequent (p.G970D) and one has been detected for the first time (p.F508del) in Chinese patients with CF. These results indicate that, at the molecular genetic level, Chinese CF patients exhibit a unique mutation spectrum and complex genotype–phenotype correlations, similar to other ethnic populations. Sequencing of the entire *CFTR* gene followed by MLPA analysis, rather than using the targeted sequencing-based screening panel for mutations commonly found in Caucasian populations, is recommended for genetic analysis in Chinese patients with CF. Owing to the small sample size, these results are preliminary and must be confirmed in a larger study, possibly requiring a multicenter collaboration.

ACKNOWLEDGEMENTS

We thank Min Peng, Xue-feng Sun and Jiangna Han for their support in this study. We thank Zhanjun Zhang for his assistance with the sweat test. This work was supported by the Beijing Municipal Science and Technology Commission (z151100003915078 to XZ), the National Natural Science Foundation of China (81300001 to XT) and Funding for Peking Union Medical College Hospital Middle-aged and Young Researchers (I449000 to XT).

AUTHOR CONTRIBUTIONS

XZ designed and supervised the study. XT, TL, WX, XL, YZ and K-FX. performed the clinical portion of the study. YL and JY carried out sequencing and mutation analysis and performed the minigene assay. HW performed MLPA. XT, YL, JY, K-FX. and XZ wrote the manuscript. All authors revised and approved the final manuscript.

COMPETING INTERESTS

The authors declare no conflict of interest.

REFERENCES

- Wright SW, Morton NE. Genetic studies on cystic fibrosis in Hawaii. *Am J Hum Genet* 1968; **20**: 157–169.
- Imaizumi Y. Incidence and mortality rates of cystic fibrosis in Japan, 1969–1992. *Am J Med Genet* 1995; **58**: 161–168.
- Yamashiro Y, Shimizu T, Oguchi S, Shioya T, Nagata S, Ohtsuka Y. The estimated incidence of cystic fibrosis in Japan. *J Pediatr Gastroenterol Nutr* 1997; **24**: 544–547.
- Bombieri C, Claustres M, De Boeck K, Derichs N, Dodge J, Girodon E et al. Recommendations for the classification of diseases as *CFTR*-related disorders. *J Cyst Fibros* 2011; **10**: S86–S102.
- Knowles M, Stutts M, Spock A, Fischer N, Gatz J, Boucher R. Abnormal ion permeation through cystic fibrosis respiratory epithelium. *Science* 1983; **221**: 1067–1070.
- Cystic Fibrosis Mutation Database. Available at <http://www.genet.sickkids.on.ca/cfr>.
- Bobadilla JL, Macek M Jr, Fine JP, Farrell PM. Cystic fibrosis: a worldwide analysis of *CFTR* mutations—correlation with incidence data and application to screening. *Hum Mutat* 2002; **19**: 575–606.
- Bombieri C, Seia M, Castellani C. Genotypes and phenotypes in cystic fibrosis and cystic fibrosis transmembrane regulator-related disorders. *Semin Resp Crit Care Med* 2015; **36**: 180–193.
- Ferec C, Cutting GR. Assessing the Disease-Liability of Mutations in *CFTR*. *Cold Spring Harb Perspect Med* 2012; **2**: a009480.

- Liu Y, Wang L, Tian X, Xu KF, Xu W, Li X et al. Characterization of gene mutations and phenotypes of cystic fibrosis in Chinese patients. *Respirology* 2015; **20**: 312–318.
- Baihua C, Sizhong Z, Yuan Y. The first case of cf in mainland China identified by DNA analysis [J]. *Chin J Med Genet* 1995; **12**: 229–232.
- Wang M-C, Shu S-G, Chang S-M, Ho WL, Chi C-S. Cystic fibrosis in two Chinese infants in Taiwan. *Zhonghua Minguo Xiao Er Ke Yi Xue Hui Za Zhi* 1992; **34**: 314–321.
- Zielenski J, Markiewicz D, Lin SP, Huang FY, Yang Feng TL, Tsui LC. Skipping of exon 12 as a consequence of a point mutation (1898+5G → T) in the cystic fibrosis transmembrane conductance regulator gene found in a consanguineous Chinese family. *Clin Genet* 1995; **47**: 125–132.
- Crawford J, Labrinidis A, Carey WF, Nelson PV, Harvey JS, Morris CP. A splicing mutation (1898+1G → T) in the *CFTR* gene causing cystic fibrosis. *Hum Mutat* 1995; **5**: 101–102.
- Wagner JA, Vassilakis A, Yee K, Li M, Hurlock G, Krouse ME et al. Two novel mutations in a cystic fibrosis patient of Chinese origin. *Hum Genet* 1999; **104**: 511–515.
- Wu C, Shu S, Zielenski J, Chiang C, Tsui L. Novel cystic fibrosis mutation (2215insG) in two adolescent Taiwanese siblings. *J Formos Med Assoc* 2000; **99**: 564–567.
- Alper O, Shu S-G, Lee M-H, Wang B-T, Lo S-Y, Lin K-L et al. Detection of novel *CFTR* mutations in Taiwanese cystic fibrosis patients. *J Formos Med Assoc* 2003; **102**: 287–291.
- Chen H-J, Lin S-P, Lee H-C, Chen C-P, Chiu N-C, Hung H-Y et al. Cystic fibrosis with homozygous R553X mutation in a Taiwanese child. *J Hum Genet* 2005; **50**: 674–678.
- Li N, Pei P, Bu D-F, He B, Wang G-F. A novel *CFTR* mutation found in a Chinese patient with cystic fibrosis. *Chin Med J (Engl)* 2006; **119**: 103–109.
- Liu J, Peng Y, Zhao Y, Wang W, Guo Y, He J et al. [Clinical manifestations and gene analysis of 2 Chinese children with cystic fibrosis]. *Zhonghua Er Ke Za Zhi* 2012; **50**: 829–833.
- Gaildrat P, Killian A, Martins A, Tournier I, Frebourg T, Tosi M. Use of splicing reporter minigene assay to evaluate the effect on splicing of unclassified genetic variants. *Methods Mol Biol* 2010; **653**: 249–257.
- Li H, Ji CY, Zong XN, Zhang YQ. [Height and weight standardized growth charts for Chinese children and adolescents aged 0 to 18 years]. *Zhonghua Er Ke Za Zhi* 2009; **47**: 487–492.
- HGMD[®] Professional 2015, 1; Available at <http://www.hgmd.cf.ac.uk/>.
- Macek M Jr, Mackova A, Hamosh A, Hilman BC, Selden RF, Lucotte G et al. Identification of common cystic fibrosis mutations in African-Americans with cystic fibrosis increases the detection rate to 75%. *Am J Hum Genet* 1997; **60**: 1122.
- Morral N, Bertranpetit J, Estivill X, Nunes V, Casals T, Gimenez J et al. The origin of the major cystic fibrosis mutation ($\Delta F508$) in European populations. *Nat Genet* 1994; **7**: 169–175.
- Lu S, Yang X, Cui Y, Li X, Zhang H, Liu J et al. Different cystic fibrosis transmembrane conductance regulator mutations in Chinese men with congenital bilateral absence of vas deferens and other acquired obstructive azoospermia. *Urology* 2013; **82**: 824–828.
- Wine JJ, Kuo E, Hurlock G, Moss RB. Comprehensive mutation screening in a cystic fibrosis center. *Pediatrics* 2001; **107**: 280–286.
- Castellani C, Cuppens H, Macek M Jr, Cassiman JJ, Kerem E, Durie P et al. Consensus on the use and interpretation of cystic fibrosis mutation analysis in clinical practice. *J Cyst Fibros* 2008; **7**: 179–196.
- CFTR* 2 Database. Available at <http://www.cftr2.org/browse.php>.
- Zielenski J. Genotype and phenotype in cystic fibrosis. *Respiration* 2000; **67**: 117–133.
- Schram CA. Atypical cystic fibrosis Identification in the primary care setting. *Can Fam Physician* 2012; **58**: 1341–1345.



This work is licensed under a Creative Commons Attribution-NonCommercial-NoDerivs 4.0 International License. The images or other third party material in this article are included in the article's Creative Commons license, unless indicated otherwise in the credit line; if the material is not included under the Creative Commons license, users will need to obtain permission from the license holder to reproduce the material. To view a copy of this license, visit <http://creativecommons.org/licenses/by-nc-nd/4.0/>

Supplementary Information for this article can be found on the Human Genome Variation website (<http://www.nature.com/hgv>).