



LOOK AGAIN...

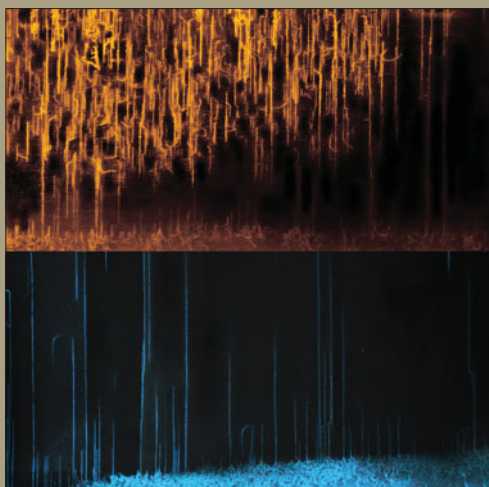
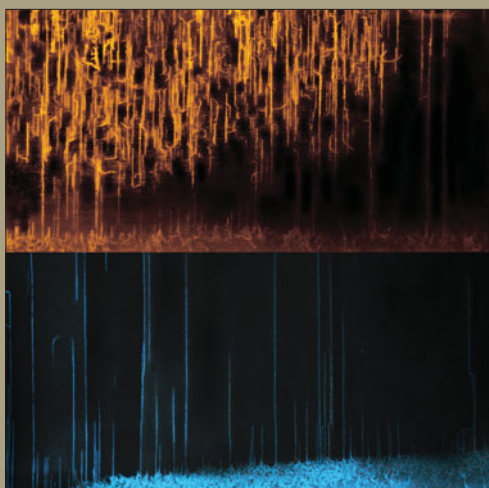
Just for Fun!

See if you can find the 8 differences in each set of images.

Carbon nanotubes disordered by the big earthquake

The upper image shows disordered carbon nanotubes grown on the day of the big earthquake in Japan in 2011, as compared to the lower image, which was obtained at normal condition.

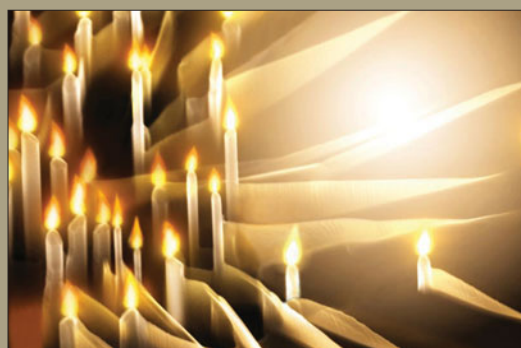
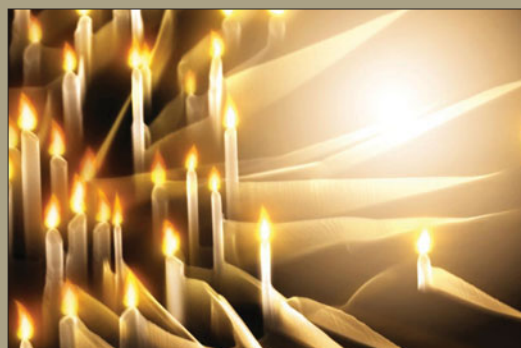
Yoshihiko Takano, National Institute for Materials Science, Japan



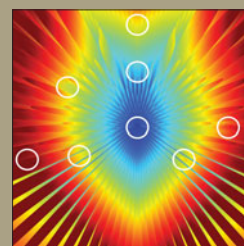
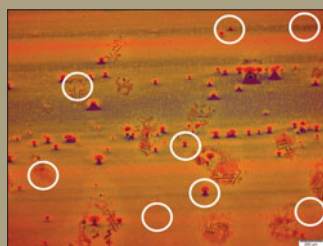
Nanowire candles

This high-magnification scanning electron microscope image shows candle-like ZnO nanowires growing through a catalyst-dripping mechanism in a chemical vapor deposition system.

Jian Shi, University of Wisconsin, USA



October 2012 answer key



The answers will be in the April 2013 issue.

Images on the top were submitted to the Materials Research Society "Science as Art" competition. Images on the bottom were modified in Adobe Photoshop for this "Look Again" activity.