

Contents lists available at [ScienceDirect](http://www.sciencedirect.com)

Pharmacological Reports

journal homepage: www.elsevier.com/locate/pharep

Corrigendum

Corrigendum to “Metformin affects macrophages' phenotype and improves the activity of glutathione peroxidase, superoxide dismutase, catalase and decreases malondialdehyde concentration in a partially AMPK-independent manner in LPS-stimulated human monocytes/macrophages” [Pharmacol. Rep. 66 (2014) 418–429]

Łukasz Bułdak^a, Krzysztof Łabuzek^{a,*}, Rafał Jakub Bułdak^b, Michał Kozłowski^a, Grzegorz Machnik^a, Sebastian Liber^a, Dariusz Suchy^a, Anna Duława-Bułdak^c, Bogusław Okopień^a



^a Department of Internal Medicine and Clinical Pharmacology, Medical University of Silesia, Katowice, Poland

^b Department of Physiology, Medical University of Silesia, Zabrze, Poland

^c Department of Anesthesiology and Intensive Care, Medical University of Silesia, Katowice, Poland

The authors regret that Fig. 7 containing representative western blots is not of sufficient quality and should be replaced. On the final steps of figure preparation the graphics technician made an incorrect attachment of blots into Fig. 7, which probably resulted from relatively low resolution of images.

In order to meet high standard of *Pharmacological Reports* and to improve clarity of data presentation we wish to perform a corrigendum of Fig. 7, which would only affect graphical representation of WB bands and not scientific merit. The authors would like to apologise for any inconvenience caused.

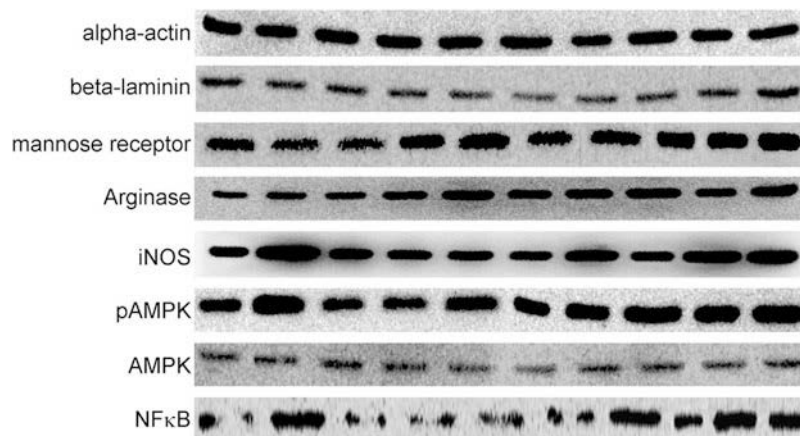


Fig. 7. Representative WB bands.

DOI of original article: <http://dx.doi.org/10.1016/j.pharep.2013.11.008>

* Corresponding author at: Clinical Pharmacology, Medical University of Silesia, Poland.

E-mail address: labuzek@labuzek.com (K. Łabuzek).

<http://dx.doi.org/10.1016/j.pharep.2017.02.010>
1734–1140/