



# A Basic Time Series Forecasting Course with Python

Alain Zemkoho<sup>1</sup>

Received: 29 October 2021 / Accepted: 16 November 2022 / Published online: 23 December 2022  
© The Author(s) 2022

## Abstract

The aim of this paper is to present a set of Python-based tools to develop forecasts using time series data sets. The material is based on a 4-week course that the author has taught for 7 years to students on operations research, management science, analytics, and statistics 1-year MSc programmes. However, it can easily be adapted to various other audiences, including executive management or some undergraduate programmes. No particular knowledge of Python is required to use this material. Nevertheless, we assume a good level of familiarity with standard statistical forecasting methods such as exponential smoothing, autoregressive integrated moving average (ARIMA), and regression-based techniques, which is required to deliver such a course. Access to relevant data, codes, and lecture notes, which serve as based for this material, is made available (see <https://github.com/abzemkoho/forecasting>) for anyone interested in teaching such a course or developing some familiarity with the mathematical background of relevant methods and tools.

**Keywords** Python · Forecasting · Exponential smoothing · ARIMA · Regression

**Mathematics Subject Classification (2020)** 90-04 · 97U50 · 97U70

## 1 Introduction

According to Makridakis et al. [1], forecasting is the *process of making predictions of the future based on past and present data and most commonly by analysis of trends, and usually needed to determine when an event will occur or a need arise, so that appropriate actions can be taken*. Broadly speaking, forecasting approaches can

---

This article is part of the Topical Collection on *Model Development for the Operations Research Classroom*.

---

✉ Alain Zemkoho  
a.b.zemkoho@soton.ac.uk

<sup>1</sup> School of Mathematical Sciences & Centre for Operational Research, Management Sciences and Information Systems (CORMSIS), University of Southampton, Building 54 Mathematical Sciences SO17 1BJ Highfield Campus, Southampton, England

be split into two categories: *qualitative* and *quantitative* forecasting methods, and we can even add a third one that we label as *semi-qualitative*, where a combination of both qualitative and quantitative methods can be employed to generate forecasts. Qualitative forecasting methods are often used in situations where historical data is not available. For more details on these concepts, interested readers are referred to the books [1, 2] and references therein.

Our focus in this paper is on quantitative methods, as we assume that historical *times series data* (i.e. data from a unit (or a group of units) observed in several successive periods) is available for the variables of interest. Within quantitative methods, we also have a number of subcategories that can be broadly labelled as *statistical methods*, which are at the foundation of the subject, and *machine learning* ones, which have been developing rapidly in recent years; see, e.g. [3–9] for a sample of applications and surveys on the subject.

The material to be presented in this paper is based on statistical forecasting methods; see, e.g. [1, 2, 10–12] for related details. Despite the fast development of machine learning techniques, they have been consistently shown through the last two *M* competitions [13, 14] to generally be outperformed by statistical methods in terms of accuracy and computational requirements; these comparisons (see relevant details in the papers [13, 14]) are done on more than 100 thousand practical data sets, related to a wide range of industries, based on the ForeDeCk database (<http://fsudataset.com/>). Note that the *M* competition series (with *M* referring to Spyros Makridakis, one of the world leaders in the field) is a famous open competition, which can also be seen as a benchmarking exercise, where competitors evaluate and compare the performance of a wide range of forecasting methods on thousands of practical data sets.

The aim of this paper is to introduce the reader to existing Python tools that can be used to deliver a practical course on basic statistical forecasting methods; namely, we will focus on the exponential smoothing, autoregressive integrated moving average (ARIMA), and regression-based methods, which are (or a combination of them) part of core techniques shown to have the best performance in the *M* competitions mentioned above.

## 1.1 Background

The material presented in this paper is based on a course named *Forecasting*, that the author has taught for the past 7 years within the School of Mathematical Sciences at the University of Southampton, based in the UK. This is an optional course, but which is very popular, and is taken by students from the eight MSc programmes listed in Table 1, spanning both the School of Mathematical Sciences and the Southampton Business School.

The course is very practical and hands on, designed to run for 16h across 4 weeks, with 2h of weekly lecture and the remaining 2h dedicated to a workshop/tutorial/computer lab, where the students are supported to go through the Python material to test and apply the methods on some practical data sets. The lectures focus on taking the students through the mathematical background of the methods that will be covered here [15]. During the computer labs, students are taken through the Python codes covered in this paper, which implement the methods that form the content

**Table 1** List of MSc programmes of origin of the students that usually take the forecasting course, which is the source of the material presented in this paper

<i>School of Mathematical Sciences</i>	<i>Southampton Business School</i>
Operational Research and Finance	Business Analytics and Management Science
Data and Decision Analytics	Logistics and Supply Chain Analytics
Operational Research	Business Analytics and Finance
Statistics	Marketing Analytics

of the lectures, and support them in using these methods to develop forecasts on practical data sets. Note that this course can easily be expanded to cover a few more weeks, as necessary, and the material can also be adapted to an undergraduate level for programmes around operations research, statistics, business analytics, and management science.

It is important to mention that before the start of the course, a brief material with a basic introduction to Python is made available to the students, in order to bring them up to speed with some basic elements of Python, in case they have had no prior exposure to the language. This brief material essentially covers the relevant Python ecosystem discussed in Section 2 and an overview of the basic steps needed to get Python up and running on their personal computers or the university machines. Additionally, note that each of the weekly computer labs, which take place during the course, is an opportunity for the instructors to guide the students on how to use the different libraries needed to implement the mathematical concepts covered in the lecture of that week.

The author has taught the course over the last 7 years, first using Excel and relevant Visual Basic for Applications (VBA) codes to enhance some of the techniques. The transition to Python was done much recently, considering the demand both from industry and students, and also to keep up with the pace of developments in data science more broadly. The motivation to prepare this paper came as a result of the transition from Excel to Python, as the author was unable to find a single book or resource relevant to prepare for a complete delivery of this course using Python.

## 1.2 Contribution of the Paper and Relevant Literature

The paper will mostly focus on the use of existing Python tools to generate forecasts, although a bit of the background on the mathematical concepts will be provided as necessary. Also, although prior knowledge of Python is not necessary, it will be assumed that the reader has some level of familiarity with methods involved in the corresponding mathematical material, as it would be required for anyone teaching such a course. The lecture notes [15] that form the material of the course discussed here are based on the books [1, 2].

As for the Python material, we only found the book [16] during the preparation of the first draft of the computing material, to be presented here, in 2019. While preparing this paper, we came across the two new books [17, 18] on the use of Python to generate forecasts on time series data. There are two common

denominators to these three books; the first is that they are mostly geared towards machine learning-based techniques for time series forecasting, with the exception of ARIMA models, which are covered in detail. Secondly, they essentially focus on the use of Python tools to generate forecasts, and hence do not specifically pay attention to the mathematical background of the methods, which are based on the corresponding Python forecasting tools.

Clearly, there are two differences between the content of this paper and what is covered in the books [16–18]. At first, considering the page limitation of an article such as this one, we also mostly only focus on the coding side of the methods; however, our presentation is essentially organized along the lines of the corresponding lecture notes [15], which provide the necessary mathematical background to develop a deep understanding of all the methods covered in this paper. Secondly, unlike in these books, we focus our attention on statistical methods, which form the basis of most of the methods which are at the heart of the successful practical implementations in the context of the M competition series, as discussed at the beginning of this introduction.

It is also important to mention that our philosophy in the preparation and delivery of the course discussed in this paper is inspired in part by the book [2]; that is, giving the reader a balanced mathematical background of the forecasting methods, while accompanying them with relevant practical software tool to use these methods on practical data sets. However, the fundamental difference is that [2] uses R while we use Python.

The lecture notes on which this course is based (i.e. [15]), as well as all the corresponding codes presented here, can be accessed online via the following link: <https://github.com/abzemkoho/forecasting>.

### 1.3 Outline of the Paper

We start the next section with an overview of the main Python packages needed to work with the tools that we will go through in this paper. Subsequently, we present tools that can be used for a basic data analysis (i.e. time, seasonal, and scatter plots, as well as correlation analysis, just to mention a few) before the start of any forecasting task based on the methods covered in this paper. Section 3 is devoted to exponential smoothing methods, which are very efficient on time series that involve trends and/or seasonality. Section 4 covers ARIMA methods; and finally, Section 5 presents tools for regression analysis and how they can be used for forecasting. Note that the exponential smoothing and ARIMA methods are blackbox techniques, as are they are built under the assumption that historical patterns in the time series will keep repeating themselves in the future. However, regression-based approaches assume that the behaviour of the time series of interest (dependent variable) is influenced by other variables (independent variables), and this is explored through linear regression to possibly build more accurate forecasts.



## 2 Preliminaries on Python and Data Analysis

### 2.1 The Necessary Python Ecosystem

No prior knowledge of Python is required to use the material in this paper. However, we assume that the reader/instructor who wants to use the tools presented here has Python up and running on their device (desktop, laptop, etc.) The codes and corresponding results are based the use of Python under Anaconda 3 with Spyder 3.6 as editor, all running on Windows 10 Enterprise (processor: Intel(R) Core(TM) i5-6300U CPU @ 2.40 GHz). The advantage of using Anaconda is that it installs Python with many important packages that are useful for time series analysis of the type covered in this paper. This therefore helps in part to reduce dependency issues between various packages used, and hence ensure that key packages are set to work nicely together. Nevertheless, all the codes presented here should be able to work smoothly on most platforms running a version 3 of Python (see <https://www.python.org/>). The main packages needed are as follows:

- SciPy;
- NumPy;
- Matplotlib;
- Pandas;
- Statsmodels.

As an *ecosystem of open-source software for mathematics, science, and engineering*, SciPy (<https://scipy.org/>) includes the NumPy library (<https://numpy.org/>) for multi-dimensional array operations and the Matplotlib library (<https://matplotlib.org/>) specifically designed for plotting.

Pandas (<https://pandas.pydata.org/>) is an open-source data analysis and manipulation tool. It is important to mention here that all the data sets used for our illustrations are stored in Excel spreadsheets. Hence, we use pandas function named `read_excel` in almost all our codes, to read data from Excel worksheets. Finally, the statsmodels library (<https://www.statsmodels.org/stable/index.html#>) is at the heart of most of the data analysis and forecasting methods presented in this paper, as it includes packages to generate forecasts using exponential smoothing, ARIMA, and regression-based methods. Occasionally, we could also use `scikit-learn` for a few tasks, such as generating some error measures.

It is also important to mention that the abovementioned libraries all work together, with NumPy and Matplotlib building on SciPy, while Statsmodels is built on top of NumPy and SciPy, integrating with Pandas for data handling, as already mentioned.

## 2.2 Basic Data Analysis Tools

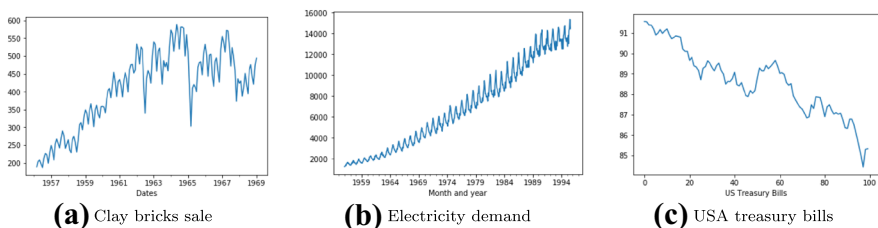
In this subsection, we discuss the following five key topics, which are crucial in the preliminary analysis of time series data sets:

- Time plots;
- Adjustments;
- Decompositions;
- Correlation analysis;
- Autocorrelation function.

A time plot is simply a two-dimensional graphical representation of a time series. A time plot is typically the starting point of any forecasting task, as it enables a first dive into the data set, to assess, for example, whether any errors or particular patterns are present in it. To build a time plot, `matplotlib` can be used after the data has been loaded using the `read_excel` function from `pandas`, as described above. Listing A.1 provides the code for the time plot in Fig. 1(a); the remaining ones are obtained just by replacing the `clay bricks` data set by the corresponding ones. Note that `read_excel` includes a number of options to specify the sheet and other information to be returned for use by the `series.plot()` command, which generates the plot.

Obviously, Fig. 1(a), (b) show a globally increasing trend, while the trend in (c) is generally decreasing. However, in the clay bricks sale, there is overall a global trend with steady increase over time up to 1965, where we start having some occasional large fluctuations which are difficult to explain, and hence, hard to predict without knowing the underlying causes. But this could be a reflection of a cyclical trend behaviour in the clay bricks sale time series.

Clearly, trend and cyclical behaviour can be easily identified from a graph. However, unlike trends and cyclical patterns, seasonality can be trickier to observe. Considering the important role that the identification of seasonality plays in developing/selecting some forecasting methods (e.g. exponential smoothing and ARIMA methods, as it will be clear in the following sections), we need to pay some attention on how to assess it. There are various ways to assess whether a time series has



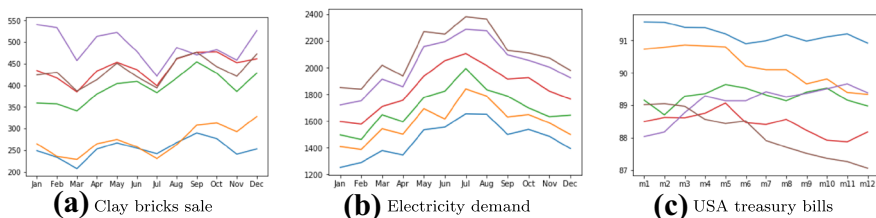
**Fig. 1** Time plots for three data sets demonstrating different patterns, with (a) showing a strong increasing trend until about 1965, a global increasing trend in (b), while we have a decreasing trend in (c). As for all the data sets used in this paper, they are drawn from material related to the book [1] and will be made available in the supplementary files

seasonality, including zooming out specific chunks of the corresponding time plots. Also, a time plot can sometimes already give an initial indication on the presence of seasonality in a time series; for example, intuitively, Fig. 1(b) already suggests that we might be having peaks and troughs occurring at regular intervals. But some further steps need to be taken to check this.

In this paper, we are going to mainly use the *seasonal plots* and the concept of *autocorrelation function (ACF)* to decide whether a time series is seasonal or not. The ACF will be defined at the end of this section. Before that, we start with the seasonal plots, which correspond to a superposition of time plots over a succession of limited time periods (e.g. 12 months in the context of monthly observations, which is what we have for most of the data sets used in our illustrations). Listing A.2 provides a code that can be used to build seasonal plots after having organized our data in months for over a few years.

Clearly, there is an indication from Fig. 2 that the clay bricks and electricity data may have seasonality, while it is unlikely to be the case for the treasury bills data. From the time plots in Fig. 1, an initial guess could have already been made about the electricity data, but maybe not necessarily for the clay bricks data. At the end of this section, we will see how the ACF plots can help to further confirm seasonality identified here.

Besides the different patterns that can be assessed using time plots, they can also enable an assessment of the need for adjustments (e.g. mathematical transformations or calendar adjustments). Ideally, the role of a mathematical transformation is to attempt to stabilize variance in a time series, where rapid changes in some parts of a time plot can affect the ability of a forecasting method to generate accurate results. For instance, the power (including the square root, as a special case) and log transformations are the most commonly used transformations in the literature; the square root can help, in the case where the time series has the shape of a second-order quadratic function, to promote a “linear” shape, which can improve the predictability capacity of some forecasting methods. On the other hand, the log (of course, applicable only for positive time series) has an additional advantage, in terms of its interpretability. For more details on these transformations and many other adjustments, which can positively impact the forecasting ability of some methods, see [2, Chapter 3]. Listings A.3, A.4, and A.5 provide appropriate codes to generate a log, square root, and calendar adjustments, respectively. The code in Listing A.5 runs on a special data set, where a calendar adjustment can be useful, as in the milk production of a cow,



**Fig. 2** Seasonal plots for the time series plotted in Fig. 1; we can see signs of relatively strong seasonality in (a) and (b), while seasonality seems weak in (c). The level variation in each of the graphs is further evidence of the increasing or decreasing trends that clearly appear in the time plots

the difference in the observations from one month to the other can essentially be due to the number of days in months. Hence, the calendar adjustment can help to remove such a calendar effect before any further analysis of this time series.

For a given time series  $\{Y_t\}_t$ , it is sometimes important to look for ways to split it by means of a decomposition function  $f$  in such way that

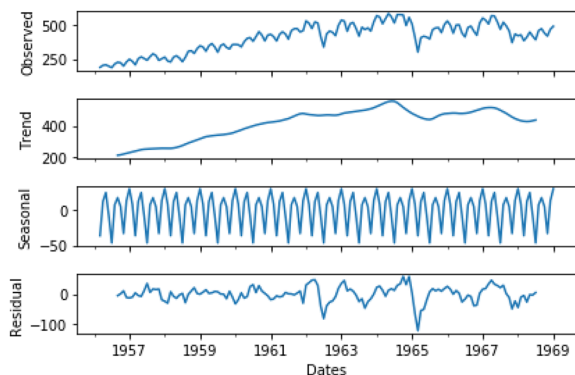
$$Y_t = f(T_t, S_t, E_t), \quad (1)$$

where for a given  $t$ ,  $T_t$  and  $S_t$  denote the trend-cycle and seasonal components, respectively, and  $E_t$  corresponds to the error that results from such a decomposition. Decompositions are useful in developing a better understanding of the constituting patterns in a time series, but not necessarily for generating forecasts. Standard selections for a decomposition function are  $f(T_t, S_t, E_t) := T_t + S_t + E_t$  (additive decomposition) and  $f(T_t, S_t, E_t) := T_t \times S_t \times E_t$  (multiplicative decomposition). The `statsmodels` function `seasonal_decompose` can be used to generate these decompositions, with the option “model” suitable for indicating the nature of the decomposition (i.e. additive or multiplicative); see Listing A.6 for an additive decomposition code (used to generate Fig. 3, for illustrative purpose) and Listing A.7 for a multiplicative one.

It is important to note that in terms of the background algorithm on how a decomposition is computed, one usually starts with the trend estimation, and then, depending on the nature of  $f(\cdot)$ , the seasonal component is estimated; interested readers are referred to the lecture notes associated to this material [15, Section 2] and references therein.

Correlation analysis comes into play when we want to explore relationships between variables in cross-sectional data. There are at least two possible tools to assess correlation between variables. Namely, scatter plots and correlation values, both concepts are strongly related in the sense that the scatter plot provides a graphical representation that can demonstrate how strong the relationship between two variables is, while the correlation is a numerical value materializing the strength level of such a relationship. As an example to illustrate these two concepts, consider a data set made of a variety of used cars and their price (based on their mileage). For instance, we might want to forecast (price) against one possible explanatory variables (mileage, here). Running the code in Listing A.8 clearly shows that the price of a car decreases as the mileage increases. Each point on the graph represents one specific vehicle.

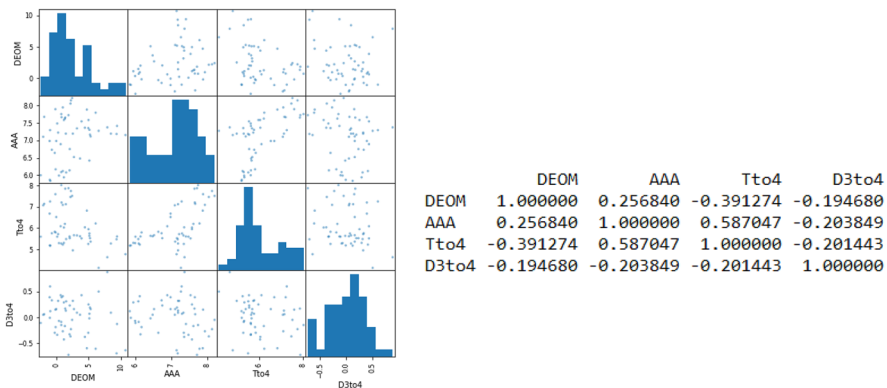
**Fig. 3** Additive decomposition graphs for the clay bricks sale time series



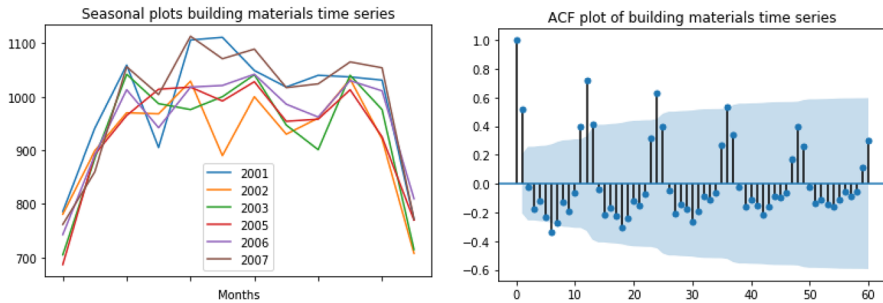
A scatter plot helps us to visualize the relationship and suggests that if one wants to forecast the price of used car, a suitable model should include mileage as an explanatory variable. In Listing A.8, the scatter plot function `scatter` from `matplotlib` is applied with arguments being the mileage and price as separate entries. Note that `pandas` also has the function `scatter_matrix`, which can generate scatter plots for many variables in one go; this could be particularly important in Section 5 when studying the regression approach to forecasting. Figure 4, for example, generated by the code Listing A.9, shows scatter plots in a matrix form for four time series.

The *correlation* is a statistic corresponding to a number between  $-1$  and  $1$  to measure the level of the linear relationship for bivariate data (i.e. when there are two variables). The `corrcoef` function from `numpy`, see Listing A.8, calculates the correlation between the mileage and prices of the cars, as discussed above. Note that in principle, `corrcoef` is generated as a symmetric matrix, hence the use of `corrrelval[1,0]` to extract the necessary value. In a situation where one is interested in evaluating the relationships between various pairs of variables, the correlation matrix enables the calculation of these values in one go, as discussed above in the context of scatter plots, as illustrated in the left-hand-side of Fig. 4; the corresponding correlation values are generated with the function `corr` from `pandas`; see the table in the right-hand-side of Fig. 4 for an illustration with four time series.

For a given time series  $Y_t$ , the concept of correlation can be extended to the time lags  $Y_t$  and  $Y_{t-k}$  of this same series. Hence, such a correlation is called *autocorrelation*. The autocorrelation is used to measure the degree of correlation between different time lags in a time series. The autocorrelation function (ACF) is crucial in assessing many properties in statistics, including seasonality, white noise, and stationarity. In this section, we limit ourselves to the use of the ACF in assessing seasonality. For its use in assessing white noise and stationarity, see Sections 3 and 4, respectively.



**Fig. 4** Left, we have the matrix of scatter plots for four times series labelled as DEOM, AAA, Tto4, and D3to4. On the right, we have the correlation matrix, which gives the correlation value that reflects the relationship in each pair in these four data sets. As it can be seen in the scatter plots, the strongest correlation is between AAA and Dto4, as confirmed by the correlation value, which is strictly larger than 0.50



**Fig. 5** Left, we have the seasonal plots for most of the years involved in the times series. On the right-hand-side, we have the ACF plot over 60 time lags

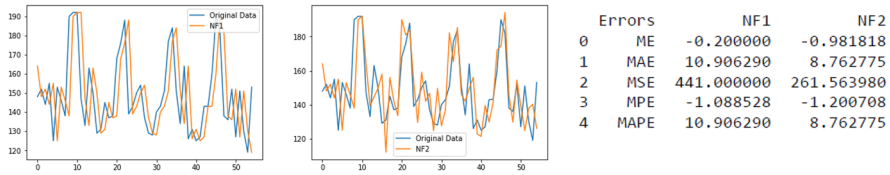
The function `plot_acf` from `statsmodels` can be used to generate ACF plots. As illustration, we use the code in Listing A.10 to generate the ACF plot for some building material data from Australia in Fig. 5. It can be seen that the seasonal plots (left-hand-side) might be slightly unclear. But the ACF plot (right-hand-side) strongly confirms the presence of seasonality, as peaks and troughs are approximately occurring at regular interval, namely, at every 12 time lags, as the data is made of monthly observations. Note that `autocorrelation_plot` from `pandas` can also be used to produce ACF plots, but instead with a curve shape; this can be seen by running the code in Listing A.10, where the relevant command is also included.

### 3 Exponential Smoothing Methods

Considering the importance of accuracy in forecasting, we start this section by discussing a few tools that can be used to assess the accuracy of a method; namely, we discuss error measures, the concept of white noise via the ACF function, and confidence intervals. After this, in Subsection 3.2, we introduce the exponential smoothing methods, which, together with the ARIMA methods, represent the most widely used forecasting techniques in practice.

#### 3.1 Accuracy Measures

As accuracy is the first main concern when forecasting, we start here by discussing how some standard error measures, i.e. the mean error (ME), mean absolute error (MAE), mean square error (MSE), percentage error (PE), mean percentage error (MPE), and the mean absolute percentage error (MAPE), can be computed using Python. To proceed, it is crucial to recall that an error measure on its own does not mean much, but rather, it can only make sense in a comparison setting of 2 or more methods. Hence, we introduce two naïve forecasting methods to illustrate how these error measures can be used in practice. We begin with a naïve forecasting, labelled as NF1, which assumes that for a times series  $\{Y_t\}$ , the forecast at time point  $t + 1$  is obtained as  $F_{t+1} = Y_t$ . Next, we consider a second naïve forecasting method labelled as NF2:



**Fig. 6** The results from NF1 and NF2 can be seen in the first and second graphs, respectively. As for the corresponding error measures, see the table in the right-hand-side

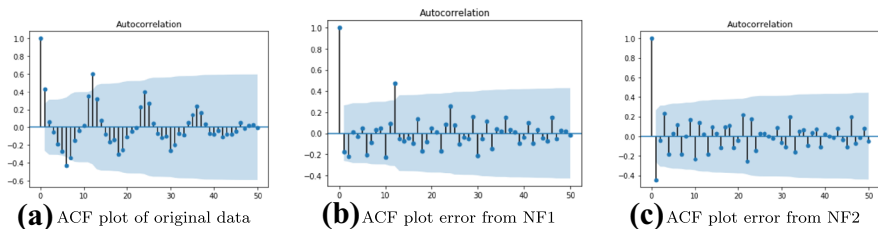
$$F_{t+1} = Y_t - S_t + S_{(t-12)+1} \quad \text{with} \quad S_t = \frac{1}{m+1}(mS_{t-12} + Y_t),$$

where  $S_t = Y_t$  for  $t = 1, \dots, 12$  and with  $m$  is the number of complete years of data available; for the initialization of the method, we set  $F_{t+1} = Y_t$  for  $t = 1, \dots, 12$ .

The code in Listing B.1 generates the results in Fig. 6, which show both the NF1 and NF2 forecast plots, as well as the corresponding error measures stated above. Note that the ME and MPE are not to be taken very seriously as their values essentially reflect the fact that positive and negative values just cancel each other throughout the range. Clearly, NF2 outperforms NF1 on almost all the measures, especially, on the positive ones (MAE, MSE, and MAPE), which are more meaningful. This is not surprising, considering the fact NF2 contains more structure capturing the nature of the data set much better than NF1, which is essentially a one-step translation of the original data set. Similar comparisons can be done for any two or more forecasting methods.

Another tool to assess the accuracy of a forecast method is the ACF of the errors. Basically, the expectation is that if the results of a forecasting methods are reasonably accurate, the time plot of the errors, seen as a time series, should be purely random. Therefore, no patterns from the original data should be preserved in the errors/residuals. Using the corresponding code in Listing B.2 on the data used for Fig. 2, we get the graphs in Fig. 7, which clearly show that the forecasts from NF1 preserve seasonality from the original time series, with the large spikes appearing after every 12th time lag. Such a pattern is not clearly obvious for NF2.

Finally, providing the confidence interval for a forecast can help decision-makers in building their management perspectives. Let  $F_{t+1}$  be the forecast from a given method, then, the corresponding lower and upper bounds can be obtained as



**Fig. 7** The original time series is seasonal as it can be seen in (a) and this pattern is preserved in the errors resulting from NF1 (b), with the spikes after each 12th time lag. However, the seasonality slightly less clear for NF2 (c)

$$LF_{t+1} := F_{t+1} - z\sqrt{MSE} \quad \text{and} \quad UF_{t+1} := F_{t+1} + z\sqrt{MSE},$$

respectively, where MSE represents the mean square error over a suitable range of the data, while  $z$  is a quantile of the normal distribution, which is a conventional number that determines the level of confidence of the corresponding interval. Standard values commonly used in practice for  $z$  can be seen in Section 2 of [15]. Figure 8, generated with the code in Listing B.3, provides the confidence intervals for the data and corresponding NF1 and NF2-based results.

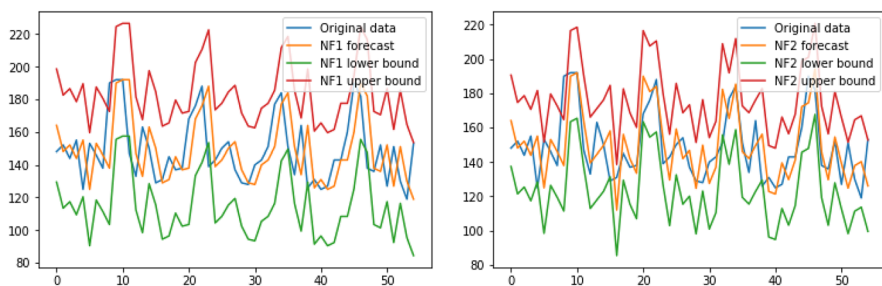
### 3.2 Exponential Smoothing Methods

There are four main types of exponential smoothing methods, which can be applied based on characteristics of our time series and sometimes also considering our intended purpose. Before diving into these methods, it is important to mention that all the related Python tools that we are going to describe here are from the `statsmodels` library. The first and simplest such method is the so-called *single exponential smoothing* (SES) method. The SES is usually applied only on time series that do not exhibit any specific pattern and can only produce one step ahead forecast.

To set the stage for the general process of all the forecasting methods that we are going to present in this paper, we are going to provide a brief overview of the mathematical background of the SES method. To proceed, let us assume that we are given a time series  $Y_1, \dots, Y_t$ , where data is available from time point  $T = 1$  up to  $T = t$ . Then, the forecast for this time series at time point  $T = t + 1$  using the SES method can be calculated as

$$F_{t+1} = (1 - \alpha)^t F_1 + \alpha \sum_{j=0}^{t-1} (1 - \alpha)^j Y_{t-j}, \tag{2}$$

where the parameter  $\alpha \in [0, 1]$ . There are various ways to initialize the method; one possibility is to select  $F_1 = Y_1$ . The first key observation that can be made on the



**Fig. 8** The confidence intervals here are obtained with the formula  $F_t \pm z\sqrt{MSE}$  with  $z$  being the parameter ensuring that the 90% chance that the forecasts would be between the lower and upper bounds provided



formula (2), and which justifies the name of this class of methods, is the fact that if one looks carefully at the factor  $(1 - \alpha)$ , we will observe that it decays exponentially as the power  $j$  increases. More interestingly, by the nature of the expression, this increase is associated with the decrease of the indices of  $Y_j$ . Hence, this means that the value of  $F_{t+1}$  relies heavily on more recent values of the time series  $Y_1, \dots, Y_t$ . This is one of the particular characteristics of any exponential smoothing methods.

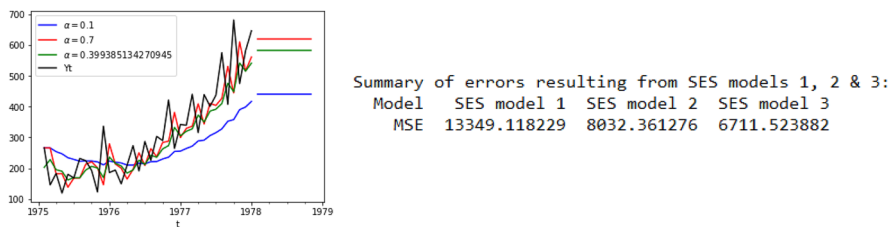
Additionally, being able to optimally select the value of the parameter  $\alpha$  is critical for the performance of the method. The strategy commonly used in this case is the least square optimization approach to select its best value. It corresponds to minimize the MSE

$$\min \frac{1}{t} \sum_{j=1}^t e_j^2 := \frac{1}{t} \sum_{j=1}^t (F_j - Y_j)^2 \quad \text{s.t.} \quad \alpha \in [0, 1], \tag{3}$$

where  $F_j, j = 1, \dots, t$  is obtained from (2). The function from statsmodels to generate forecasts using the SES method is `SimpleExpSmoothing`. Applying it, as in Listing B.4, to an example of data set generates the results in Fig. 9, where we can clearly see that the models based on manually selected values  $\alpha = 0.1$  and  $\alpha = 0.7$  for models 1 and 2, respectively, are not as good as the 3rd model, which is obtained by solving the optimization problem in (3); clearly, the MSE values in the right-hand-side table in Fig. 9 confirm that the parameter  $\alpha$  obtained from the optimization problem (3) incurs the smallest error.

The core part of the code in Listing B.4 is `SimpleExpSmoothing` imported from the subpackage `statsmodels.tsa.api` of `statsmodels`. Everything else is essentially the selection of the parameter  $\alpha$  for models 1 and 2 using the option `smoothing_level`; obviously, in the case where  $\alpha$  is optimally selected, the default selection of the `optimized` option is set at `True`. Also, recall that as the SES method can only produce a one-step forecast, the number 10 that appears in the command `fit2.forecast(10).rename(r'\alpha = 0.7')`, in the 2nd model, for example, sets the number of times that the single value of  $F_{t+1}$  is going to be repeated. This is essentially to clearly visualize the result in the graph; however, it creates an impression that the forecast values beyond  $t$  are a line.

The second basic exponential smoothing method is the Holt linear method, which builds on the same path as (2)–(3). Holt’s linear method is suited for time series



**Fig. 9** On the left, we have the forecast plots for different values of the parameter  $\alpha$ , with the 3rd being the optimal one. The table on the right provides values of the MSE for each value of the parameter

involving trend without the presence of seasonality. Hence, this method involves an estimate of the level and linear trend of the time series at a given time point. As a consequence, the Holt linear method involves level and slope parameters  $\alpha$  and  $\beta$ , respectively. These parameters can be optimized using the minimization of the MSE, similarly to what is done in (3). Similarly to SES, Holt's linear method is applied by simply calling the function named `Holt` from `statsmodels.tsa.api`. In the case where we want to set the parameters  $\alpha$  and  $\beta$  manually, we can use the options `smoothing_level` and `smoothing_slope`, respectively. To improve the forecasting performance of the Holt linear method, the `Holt` function provides an option to select the nature of the trend using the `exponential` or `damped` option, as it can be seen in the following excerpt of the Holt forecasting code in Listing B.5:

```

1 fit1 = Holt(series).fit(smoothing_level=0.5, smoothing_slope=0.5, optimized=False)
2 #-----
3 fit2 = Holt(series, exponential=True).fit(smoothing_level=0.2,
4     smoothing_slope=0.4, optimized=False)
5 #-----
6 fit3 = Holt(series, damped=True).fit()

```

Obviously, the default selection of the trend in the first model (see first line in this excerpt) is the linear trend. For more details on the different type of trends and the corresponding mathematical adjustment, see <https://www.statsmodels.org/stable/generated/statsmodels.tsa.holtwinters.Holt.html>.

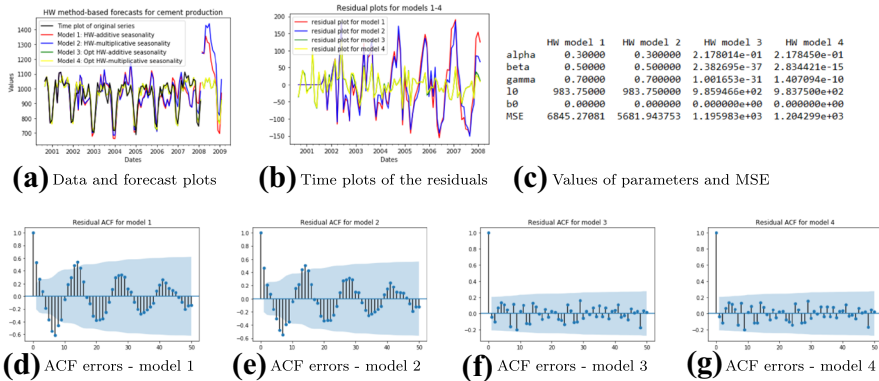
Finally, we now present the Holt-Winter forecasting method, which is suitable for time series involving both trend and seasonality. Hence, in addition to the level and trend components needed in the Holt linear method (design only for the case where trend is present in our time series), a seasonal component is needed. The seasonal component also comes with its parameter generally denoted by  $\gamma$ . As it should be the case for the previous two methods, all the parameters are required to be real numbers from the interval  $[0, 1]$ . Since the Holt-Winter method is more general than the SES and LES, the corresponding function from `statsmodels.tsa.api` is labelled as `ExponentialSmoothing`.

```

1 fit1 = ExponentialSmoothing(series, seasonal_periods=12, trend='add',
2     seasonal='add').fit(smoothing_level = 0.3,
3     smoothing_slope=0.5, smoothing_seasonal=0.7)

```

As we can see from this excerpt of the corresponding code in Listing B.6, besides the parameters  $\alpha$ ,  $\beta$ , and  $\gamma$ , represented here by `smoothing_level`, `smoothing_slope`, and `smoothing_seasonal`, which can be fixed or optimized as in the previous two exponential smoothing methods, we have the nature of the trend and seasonality, which can be additive or multiplicative. Clearly, the term *add* (resp. *mul*) is used for additive (resp. multiplicative) trend or seasonality. More details on these concepts can be found in [15, Section 2].



**Fig. 10** All the results here are generated with the codes in Listing B.6, where **a** is obtained from `ExponentialSmoothing` and **b** results from errors calculated with values extracted from the results from the `ExponentialSmoothing` function. The table in **c** is obtained by applying `mean_squared_error` from `sklearn.metrics` to forecast values extracted from the results from `ExponentialSmoothing`. The latter results can also be obtained straightforwardly from the formulas of the MSE. As for the second row **(d)–(g)**, the plots there are generated with `plot_acf` from `statsmodels`. The data set is based on cement production in Australia

We use the code in Listing B.6 to generate the results in Fig. 10, which clearly show that the optimized models 3 and 4 are the best, with the 3rd one with additive trend and seasonality being slightly better. The ACF of the residuals from each method are also included in the code, to further evaluate the performance of each method. It is clear that the residuals for models 1 and 2 retain the seasonality present in the original data set. On the other hand, Fig. 10(b), (f), and (g) just confirm that residuals seem relatively random.

## 4 ARIMA Methods

### 4.1 Preliminary Tools

As we have seen so far, the ACF plot can play an important role in showing that a time series is seasonal and also in assessing the accuracy of a forecasting method (mainly via the white noise concept). In this section, we are going to see how the ACF can also be helpful in assessing a few other properties relevant to the ARIMA method, namely, in assessing stationarity and the identification of an ARIMA model. However, to strengthen the capacity of the ACF in this role, we now introduce the concept of *partial autocorrelation function* (PACF), which is used to measure the degree of association between observations at time lags  $t$  and  $t - k$  (i.e.  $Y_t$  and  $Y_{t-k}$ , respectively) when the effects of other time lags,  $1, \dots, k - 1$ , are removed. Hence, partial autocorrelations calculate true correlations between  $Y_t, Y_{t-1}, \dots, Y_k$  and can therefore be obtained using a regression formula on these terms, while proceeding

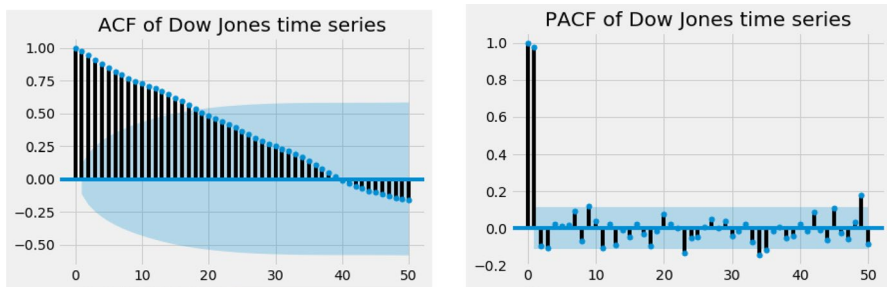
as in the least square approach in (3) or the concept of maximum likelihood estimation, which is more common in this case [2].

To get a good flavour of how the PACF can be applied, let us use it to further illustrate white noise in combination with ACF. Similarly to the ACF, as shown in Subsection 2.2, the PACF can be plotted by simply applying the function `plot_pacf` from `statsmodels.graphics.tsaplots`. The code in Listing C.1 generates the ACF and PACF for an example of white noise model. The important thing to note when this code is ran is how the ACF and PACF of a typical white noise model look like; recall that for a model to be statistically white noise, about 95% of the values of ACF and PACF are within the range  $\pm 1.96/\sqrt{n}$ , where  $n$  is the total number of observations. This range is represented by the shadow band that appears in the graphs of both the ACF and PACF.

We now turn our attention to the concept of *stationarity*, which is at the heart of the development of ARIMA methods. Recall that a time series is stationary if the distribution of the fluctuations is not time dependent. This is easy to say, but it can be tricky to actually show that a time series is stationary. We try now to provide a few tools that can be helpful in identifying stationarity in a time series. To proceed, we start by stating the following scenarios or specific tools that we are going to rely on to identify whether a time series is stationary or not:

1. A white noise time series is stationary;
2. A time series with trend or seasonality is non-stationary;
3. A cyclical time series with no trend and no seasonality is stationary;
4. A non-stationary time series can be detected by means the ACF and PACF;
5. A unit root test can be used to show that a time series is stationary.

We have just seen how to determine whether a time series is white noise, using the ACF and PACF, which can be plotted with Python using `plot_acf` and `plot_pacf`, respectively. As for the second item, we already know, see Subsection 2.2, how to identify trend and seasonality, as well as cyclical patterns, using time plots. There is an interesting way to show that a time series is non-stationary by means of its ACF and PACF plots. Basically, the autocorrelations of a stationary time series drop to zero quite quickly, while those of a non-stationary one can take a significant



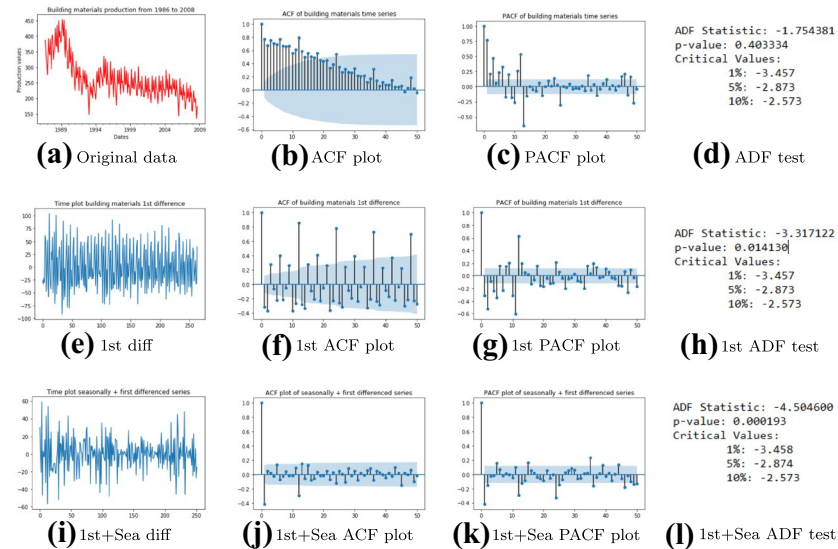
**Fig. 11** Example of non-stationary times series (Dow Jones data from January 1956 to April 1980)

number of time lags to become zero. On the other hand, the PACF of a non-stationary time series will typically have a large spike, possibly close to 1, at lag 1. This can clearly be observed in Fig. 11 generated with the code in Listing C.2.

Ultimately, if the first four points above cannot help to make a definite decision on the stationarity or non-stationarity of a time series, then we can proceed with a *unit root test*. It is important to say beforehand that this is not a magic solution to demonstrate stationarity, as there are various types of unit root tests, which can sometimes provide contradictory results. The version of the unit root test that we consider here is the augmented Dickey-Fuller (ADF) test [19], which assesses the null hypothesis that a unit root is present in a time series sample.

A simple understanding of the ADF test that is relevant to us is that it generates a number of statistics that we are going to present next. To generate these statistics, the function `adfuller` from `statsmodels.tsa.stattools` can be applied to our data set. This function simply takes in the values of the time series, as it can be seen in the example used in the code present in Listing C.3, which is used to generate the results in Fig. 12 from three different scenarios. Considering some building material production data from Australia, the first row of Fig. 12 presents the time, ACF, and PACF plots, respectively, as well as the statistics generated by the ADF test.

The ADF test (see last column of Fig. 12) generates three key categories of statistics. First, we have the ADF statistics itself, which needs to be negative and subsequently would need to be less than the 1% critical value to confirm the strength of stationary if additionally, the *P*-value is at least less than the threshold value of 0.05. We can clearly see from Fig. 12 how the ADF test helps to confirm that we go



**Fig. 12** The original time series is obviously not stationary as it can be seen in (a)–(d); after first differencing, trend is removed but the new series is still not stationary as it is seasonal; see (e) - (h). It is after both first and seasonal differencing that we obtain a stationary time series; cf. (i)–(l)

from a series, where the original and first differenced series are non-stationary to a stationary time series when first and seasonal differencing are done.

## 4.2 Models and Selection Process

A simplistic though seemingly nice way to introduce the ARIMA methods is to think about the corresponding forecast function as a polynomial  $f : \mathbb{R} \rightarrow \mathbb{R}$  defined by

$$f(x) := a_0 + a_1x + a_2x^2 + \dots + a_px^p,$$

where  $p$  is the order of the polynomial and  $a_0, a_1, \dots, a_p$  are its coefficients. To get a complete description of this polynomial, we need to start by identifying the order  $p$ , which determines the number of the coefficients  $a_0, a_1, \dots, a_p$ , which can then be subsequently calculated. This is approximately what is done to build an ARIMA model. To make things a bit precise, let us consider a non-seasonal ARIMA( $p, d, q$ ) model

$$(1 - \phi_1B - \dots - \phi_pB^p)(1 - B)^dY_t = c + (1 - \theta_1B - \dots - \theta_qB^q)e_t, \quad (4)$$

where  $B^kY_t := Y_{t-k}$  corresponds to the backshift notation. Here, the vector  $(p, d, q)$  represents the order of the model, and  $\phi_i, i = 1, \dots, p$  and  $\theta_j, j = 1, \dots, q$  are parameters/coefficients of the model. Algorithm 1 summarizes the building process of an ARIMA model, including the forecasting step.

---

### Algorithm 1 Sketch of the process of identifying and applying an ARIMA model for forecasting

---

**Step 1:** Preliminary identification of the order of the model  $(p, d, q)$  using ACF and PACF.

**Step 2:** Confirmation of the order by means of the Akaike Information Criterion (AIC).

**Step 3:** Determine the coefficients  $c, \phi_1, \dots, \phi_p$ , and  $\theta_1, \dots, \theta_q$ .

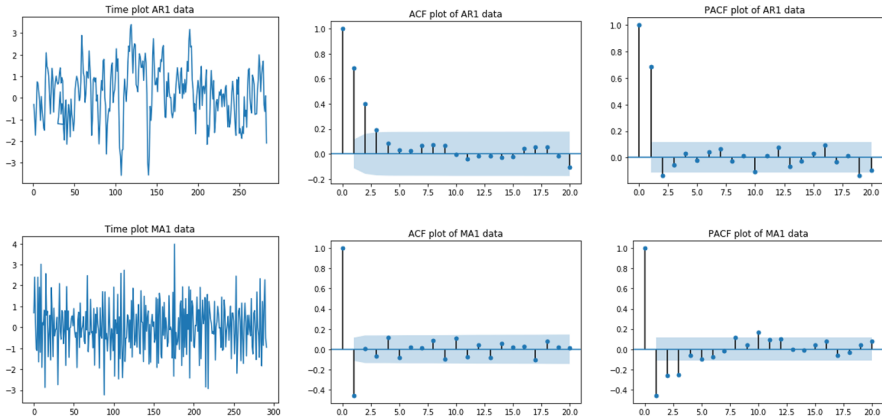
**Step 4:** Apply the order to forecast and assess the quality of the model by means of some statistics.

---

In Step 1, determining  $d$  is the most obvious thing, as it simply results from whether we need to do differencing or not to ensure that our time series is stationary. If no differencing is needed, then  $d = 0$ . Otherwise,  $d \geq 1$  simply represents how many times differencing is needed to obtain stationarity.  $p$  and  $q$  are much more trickier to obtain. An initial approximation of these numbers can be derived from the ACF and PACF plots. To proceed, let us first present graphs of the ACF and PACF of pure autoregressive and moving average models

$$\text{AR}(p) = \text{ARIMA}(p, 0, 0) \quad \text{and} \quad \text{MA}(q) = \text{ARIMA}(0, 0, q), \quad (5)$$

respectively, for an artificially generated time series example.  $\text{AR}(p)$  is obtained if the ACF of this time series is exponentially decaying or sinusoidal and there is a significant spike at lag  $p$  in the PACF, but no larger one beyond lag  $p$ . As for the pure moving average model  $\text{MA}(q)$ , the PACF is exponentially decaying or sinusoidal; and there is a significant spike at lag  $q$  in the ACF plot, but not larger than one beyond lag  $q$ . Of course, in the case of a non-stationary time series, these observations would



**Fig. 13** The first row presents the time, ACF, and PACF plots of an artificially generated autoregressive model of order 1. The second row presents analogous graphs for an artificially generated moving average of order 1

be made on ACF and PACF of “sufficiently differenced” (in the sense of leading to stationarity) data. The graphs in Fig. 13 show an AR(1) and a MA(1) in the first and second row, as generated by Listings C.4 and C.5, respectively.

Considering the fact that the approach in Step 1 can only enable the estimation of pure AR and MA models, we need a way to check whether our series exhibits a more general ARIMA( $p, d, q$ ) model with  $p > 0$  and  $q > 0$  simultaneously. The AIC, which is a function of  $p$  and  $q$ , can help us to check whether there is a model better than the one obtained from Step 1. The smaller the AIC, the better the model is. To proceed, we can use the code in Listing C.6, which runs through a combinations of values  $p, d$ , and  $q$  from the interval  $[0, 2]$  to identify the order  $(p, d, q)$  with best AIC. For the selection of  $d$ , it is straightforward to use the process described above, repeating the differencing as necessary to get the best statistics from the ADF test based on the code in Listing C.3.

In terms of the content of the code in Listing C.6, its main feature is the ARIMA function from statsmodels. This function is also going to be used for Step 4 of Algorithm 1, but one of its most interesting features is that it also generates other important information such as the AIC of the corresponding model. However, in the context of Listing C.6, its main role is to print and compare the AIC to identify the best model. When the most suitable values of the order  $(p, d, q)$  have been identified, the ARIMA function can then be applied, using this order, to generate the forecasts, as it is done for the example in Listing C.7. Running the code generates forecast plots and some important statistics, including the AIC of the model and the corresponding coefficients/parameters  $\phi_i, i = 1, \dots, p$  and  $\theta_j, j = 1, \dots, q$  as described in the equation in (4).

So far, we have considered only time series that are not necessarily seasonal. In the seasonal case, the process is the same, except that the seasonal order  $(P, D, Q)$  and periodicity  $s$  have to be provided, as indicated in the general model

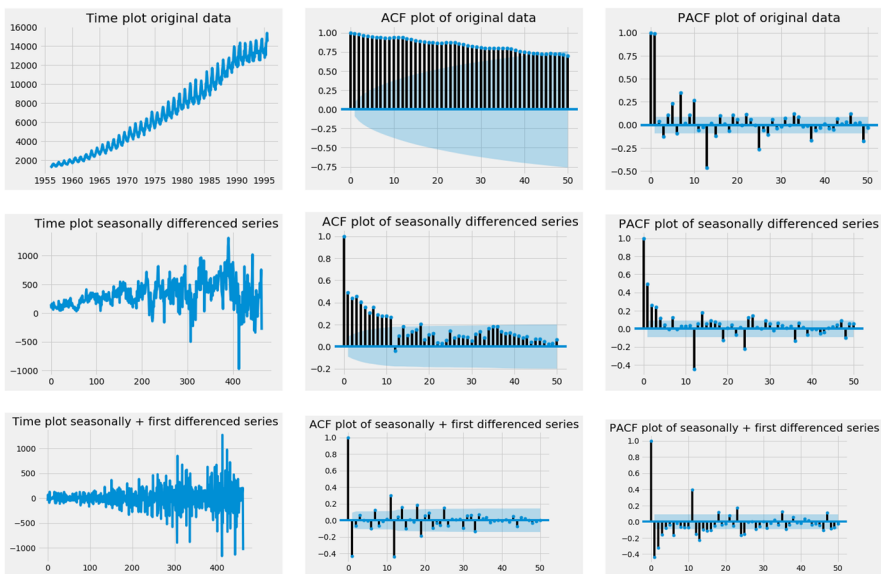
$$\text{ARIMA}(p, d, q)(P, D, Q)_s \tag{6}$$

The first key difference between the non-seasonal (4) and seasonal (6) ARIMA models is the parameter  $s$ , which represents the number of time periods per season shown by the time series; for example, for the seasonal time series examples that we have covered so far (see, e.g. Figs. 2 and 5), the patterns repeat themselves every 12 months — hence,  $s = 12$  in those cases. Similarly to  $d$  in (4),  $D$  in (6) represents the number of seasonal difference needed to remove seasonality in the time series. Furthermore, the pure seasonal autoregressive and moving average models

$$\text{ARIMA}(p, 0, 0)(P, 0, 0)_s \quad \text{and} \quad \text{ARIMA}(0, 0, q)(0, 0, Q)_s, \tag{7}$$

respectively, can be obtained in a way similar to (5) by looking whether the patterns from the ACF and PACF plots approximately repeat themselves after  $s$  time lags. For example, using the code in Listing C.8, first-order differencing and seasonal differencing can be done to remove trend and seasonality from the electricity data from Fig. 2(b). Based on the reference ACF and PACF plots in Fig. 13 (second row), this leads to the model  $\text{ARIMA}(0, 1, 1)(0, 1, 1)_{12}$  in Fig. 14 (third row), as a  $\text{MA}(1)$  pattern approximately repeats itself from the 12th time lag.

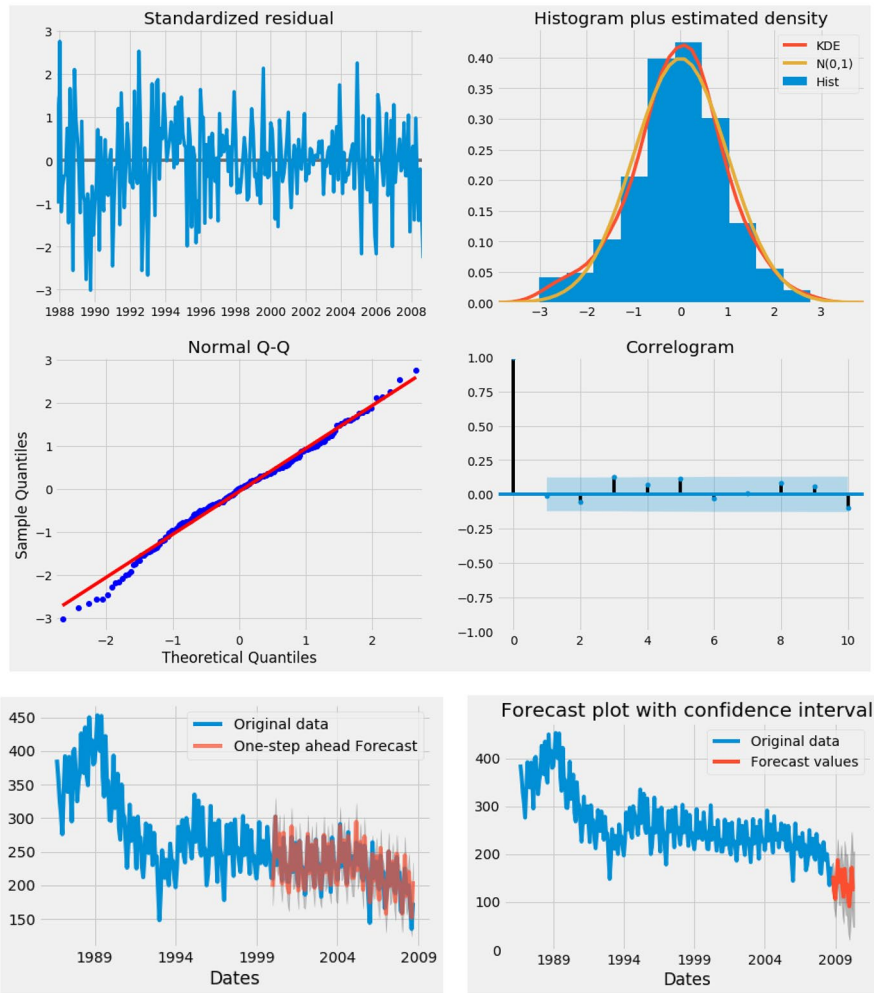
After this identification trial for a seasonal model based on the ACF and PACF plots, one can then proceed with the automatic identification process similar to the one introduced above (see Listing C.6), while using the corresponding seasonal code available in Listing C.9. Similarly, when the best seasonal order  $(p, d, q)(P, D, Q)$



**Fig. 14** These graphs generated from Listing C.8 present the changes in the electricity demand times series data in Fig. 1(b), going from the original data and its ACF and PACF plots (first row), passing by the first difference (second row) to the graphs resulting from first and seasonal differencing (third row)



with the corresponding number of time periods per season ( $s$ ) has been identified, the seasonal ARIMA function (SARIMAX) also from statsmodels (see Listing C.10) can be used to generate the forecasts. Running SARIMAX with the code available in Listing C.10 applied on building material time series from 1986 to 2008 in Australia, we get the graphs in Fig. 15 together with a number of statistics assessing the quality of the model and the results.



**Fig. 15** Summary of graphical results obtained by running the SARIMAX(1, 1, 1)(0, 1, 1)<sub>12</sub> model using the code from Listing C.10 on building material time series from 1986 to 2008 in Australia. The first four graphs assess the accuracy of the method, with (1) the residual plot, (2) the distribution of the error (close to a normal distribution), (3) the normal Q–Q plot, which compares randomly generated and independent standard normal data on the vertical axis to a standard normal population on the horizontal axis (the closest the data points are to a line suggests that the data are normally distributed), and (4) the correlogram for checking randomness in the residual. The last row shows the one-step forecasts on a section of the data for some visual assessment of accuracy, as well as the out-of-sample future forecasts over a 20-step horizon

## 5 Regression-Based Forecasting Method

The particularity of the method that we are going to discuss here is that it is *explanatory*, in comparison to the previous ones, which are blackbox methods. A regression model exploits potential relationships between the main (dependent) variable and other (independent) variables. We focus our attention here on the simplest and most commonly used relationship, which is the *linear regression*:

$$Y = b_0 + b_1X_1 + \dots + b_kX_k + e, \quad (8)$$

where  $Y$  is the dependent variable,  $X_1, \dots, X_k$  the independent variables, and  $b_0, b_1, \dots, b_k$  the coefficients/parameters, where  $b_0$  specifically is often called *intercept*. It is important to start by recalling that a regression model as (8) is not a forecasting method by itself; there is a large number of applications of regression models in statistics and econometrics; see, e.g. [20] for a detailed analysis of regression models and some flavour of a sample of applications.

To apply the regression model (8) to develop a forecast for a time series  $\{Y_t\}$ , we assume that it is influenced by other time series  $\{X_{it}\}$  for  $i = 1, \dots, n$ . To have some flavour of this, we consider the *mutual savings bank case study* from [14, a regression model can be built to forecast EOM while considering AAA and Tto4 as independent variables. For some technical reasons (see [1]), our  $Y$  is the first-order difference of EOM (denoted by DEOM), and  $X_1, X_2$ , and  $X_3$  the AAA, Tto4, and D3to4 (first-order difference of Tto4), respectively. Note that historical time series data sets are available for the variables DEOM, AAA, Tto4, and D3to4, and there are some level of relationship between these variables as it can be seen from the scatter plots and correlation matrix in Fig. 4. However, this is not enough to guarantee that the regression model resulting from this relation would be significant. The analysis of a regression model starts with the evaluation of its overall significance.

For the overall significance of a model, key statistics are the  $R^2$  (known as the coefficient of determination) and the  $P$ -value, which gives the probability of obtaining a  $F$  statistic as large as the one calculated for the data set being studied, if in fact the true slope is zero. As the  $R^2$  is a number between 0 and 1, model (8) would be considered to be significant if it is at least greater than 0.50. Hence, the overall significance of the model increases as  $R^2$  grows closer to the upper bound 1. Furthermore, from the perspective of the  $P$ -value, a regression model will be said to be significant if the  $P$ -value is smaller than the conventionally set value of 0.05; and the significance improves as the  $P$ -value decreases below this threshold.

Before we expand this discussion further, let us show how the aforementioned statistics can be obtained with Python. Our analysis of a regression model here is based on the `ols` function from `statsmodels`, which means *ordinary least squares*, given that the parameters in (8) are computed by the same least square approach introduced for the SES model in (3). As you can see in the demonstration code in Listing D.1, it is incredibly easy to use `ols`. For example, to build the basic model for our above bank case study, what is needed is to start by writing the regression equation

```
formula = 'DEOM ~ AAA + Tto4 + D3to4'
```

recalling that  $Y = DEOM$  is the dependent variable and  $X_1 = AAA$ ,  $X_2 = Tto4$ , and  $X_3 = D3to4$ , respectively, are the independent variables. The function `ols` can then be applied as follows to the combination of this formula and the data set to produce the statistics:

```
results = ols(formula, data=series).fit(),
```

where *series* corresponds to the container with the time series data sets for the dependent and independent variables. The results from this function (generated with the code in Listing D.1) are given in the table in Fig. 16.

The orange box in Fig. 16 contains the statistics of overall significance of the model from the corresponding example, where  $Y$  is represented by time series DEOM, while  $X_1$ ,  $X_2$ ,  $X_3$ , and  $X_4$ , are represented by AAA, Tto4, and D3to4, respectively. It can clearly be seen that the overall model in this example is significant, with an  $R^2$  of 0.56 and a  $P$ -value of  $7.59 \times 10^{-9}$ . But the  $R^2$  suggests that the significance is not that strong, although the  $P$ -value is relatively good from the perspective of the threshold value of 0.05.

For the individual significance of each variable involved in (8), the main statistics is the  $P$ -value. Similarly to the  $F$ -test, the `statsmodels` function `ols` (ordinary least squares) generates  $P$ -values of each  $t$ -statistic. Each of these  $P$ -values is the probability of obtaining an absolute value of the  $t$ -statistics, of a given independent variable, as large as the one calculated for the data, if the parameter is equal to zero. So, if a  $P$ -value is small, then the estimated parameter is significantly different from zero. As with  $F$ -tests, it is common to conclude that an estimated parameter is significantly different from zero (i.e. *significant*) if the  $P$ -value is smaller than 0.05. The 5th column of the green box in Fig. 16 gives the  $P$ -value of each of the 3 independent variables in the example introduced above.

OLS Regression Results

Dep. Variable:	DEOM	R-squared:	0.561
Model:	OLS	Adj. R-squared:	0.534
Method:	Least Squares	F-statistic:	20.85
Date:	Fri, 17 Sep 2021	Prob (F-statistic):	7.59e-09
Time:	16:46:31	Log-Likelihood:	-112.87
No. Observations:	53	AIC:	233.7
Df Residuals:	49	BIC:	241.6
Df Model:	3		
Covariance Type:	nonrobust		

	coef	std err	t	P> t	[0.025	0.975]
Intercept	-4.3391	3.259	-1.331	0.189	-10.888	2.210
AAA	3.3722	0.556	6.065	0.000	2.255	4.490
Tto4	-2.8316	0.390	-7.269	0.000	-3.614	-2.049
D3to4	-1.9648	0.863	-2.277	0.027	-3.699	-0.231

Omnibus:	0.440	Durbin-Watson:	1.476
Prob(Omnibus):	0.802	Jarque-Bera (JB):	0.219
Skew:	-0.157	Prob(JB):	0.896
Kurtosis:	3.002	Cond. No.	107.

Fig. 16 Key statistics to assess the overall and individual significance of a regression model

Clearly, the significance of AAA, Tto4, and D3to4 is relatively good, as it is less than the threshold value of 0.05, although that of the latter variable is weaker.

Interestingly, the green box in the table in Fig. 16 also provides the coefficients of this example (cf. second column). After we have seen how the function  $\text{ols}$  can help to generate the key statistics to assess the overall and individual significance of the model, it remains to see how the forecast can actually be derived. To be able to do this, we need the forecasts

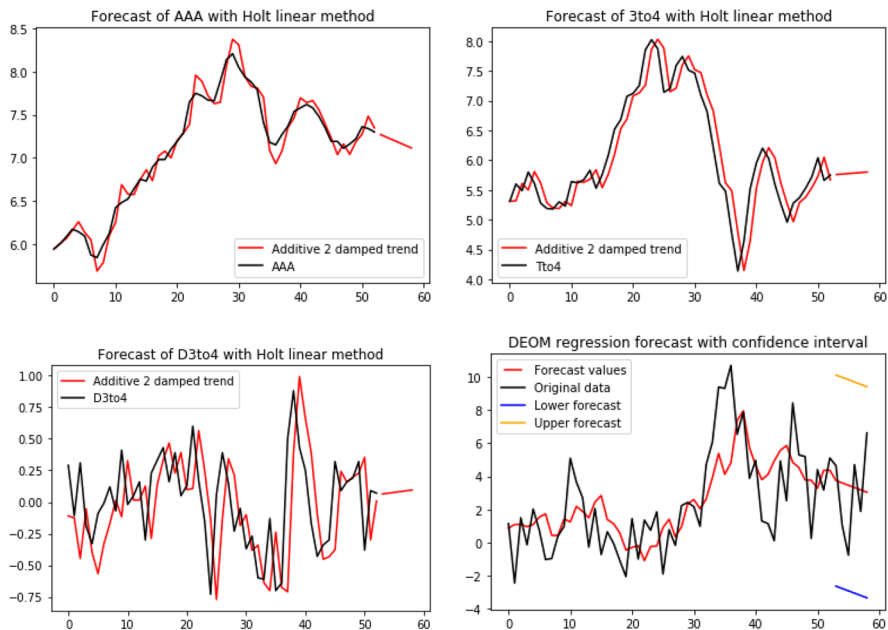
$$G_i = (G_{i1}, \dots, G_{ik}) \text{ of } X_i = (X_{i1}, \dots, X_{ik}) \text{ for } i = t + 1, \dots, t + m.$$

We can then use each of these forecasts of the independent variables in the expected value that determined the regression-based forecast for the independent variable  $Y$  using Eq. (8):

$$F_i = \hat{Y}_i = G_i \hat{b} \text{ for } i = t + 1, \dots, t + m, \tag{9}$$

where the forecasts  $G_i$  of each independent variable can be obtained by any method that is most suitable. Applying (9) to our example above (see Listing D.2), we obtain the results in Fig. 17.

To conclude this section, some quick comments are in order. First, one of the typical preliminary step when building a regression model is to conduct a correlation



**Fig. 17** Generating forecasts for the time series involved in this model, i.e. AAA, Tto4, and D3to4 for the independent variables and DEOM for the dependent variable, is quite challenging as none of data sets exhibits a clear pattern. Hence, from the exponential smoothing methods covered in Section 3, only Holt’s linear method is the most suitable, as it enables the calculation of out-of-sample forecasts over a number of time points ahead. An ARIMA method could also be used to generate forecasts for AAA, Tto4, and D3to4

analysis (e.g. scatter plots, correlation matrix), which can be done using tools that we have discussed in Subsection 2.2. This can be done here with matrix scatter plots and correlation tables; see Fig. 4. Also, often to improve an initial model as in (8) or resulting forecasting accuracy (9), a careful selection process of variables or features of the data sets can be done. Finally, the term prediction is usually confused with that of forecast. *Prediction* is much more broad, as it includes tasks such as predicting the result of a soccer game or an election, where only characteristics of the player of each team (soccer) or surveys from voters (election) not necessarily historical data can be used. Further details on these topics can be found in [1, 2, 15] and references therein.

## 6 Conclusion

This paper puts together a set of Python-based mostly off-the-shelf tools to develop forecasts for time series data using basic statistical forecasting methods, namely, exponential smoothing, ARIMA, and regression methods. It is important to mention that for each forecasting method and analysis tool described in this paper, there could be multiple Python approaches available, to undertake them, across different Python-based platforms. Secondly, within many packages, there could also be various ways to do the same thing. So, when using the material presented here, it will be useful to have a look at the most recent updates on the corresponding packages' websites (see corresponding links provided in Section 2) for other possible ways to conduct specific analysis or for the most recent updates on possible improvements to these tools.

## Appendix

### Codes on Preliminaries on Python and Data Analysis

```
1 from pandas import read_excel
2 from matplotlib import pyplot
3 series = read_excel('ClayBricks.xls', sheetname='BRICKSQ', header=0,
4                   index_col=0, parse_dates=True, squeeze=True)
5 series.plot()
6 pyplot.show()
```

Listing A.1 TimePlot

```
1 from pandas import read_excel
2 import matplotlib.pyplot as plt
3 import numpy as np
4 series = read_excel('ClayBricks.xls',
5                   sheetname='SeasonalData', header=0, index_col=0, parse_dates=True,
6                   squeeze=True)
7 x = np.array([0,1,2,3,4,5,6,7,8,9,10,11])
8 months = ['Jan', 'Feb', 'Mar', 'Apr', 'May', 'Jun', 'Jul', 'Aug', 'Sep', 'Oct', 'Nov',
9           'Dec']
10 plt.xticks(x, months)
11 plt.plot(x, series)
12 plt.show()
```

Listing A.2 SeasonalPlot

```

1 from pandas import read_excel
2 from pandas import DataFrame
3 from numpy import log
4 from matplotlib import pyplot
5 series = read_excel('Electricity.xls',
6                     sheetname='Data', header=0,
7                     index_col=0, parse_dates=True, squeeze=True)
8 dataframe = DataFrame(series.values)
9 dataframe.columns = ['electricity']
10 dataframe['electricity'] = log(dataframe['electricity'])
11 pyplot.figure(1)
12 # line plot
13 pyplot.subplot(211)
14 pyplot.plot(dataframe['electricity'])
15 # histogram
16 pyplot.subplot(212)
17 pyplot.hist(dataframe['electricity'])
18 pyplot.show()

```

Listing A.3 LogTransform

```

1 from pandas import read_excel
2 from pandas import DataFrame
3 from numpy import sqrt
4 from matplotlib import pyplot
5 series = read_excel('Electricity.xls',
6                     sheetname='Data', header=0,
7                     index_col=0, parse_dates=True, squeeze=True)
8 dataframe = DataFrame(series.values)
9 dataframe.columns = ['electricity']
10 dataframe['electricity'] = sqrt(dataframe['electricity'])
11 pyplot.figure(1)
12 # line plot
13 pyplot.subplot(211)
14 pyplot.plot(dataframe['electricity'])
15 # histogram
16 pyplot.subplot(212)
17 pyplot.hist(dataframe['electricity'])
18 pyplot.show()

```

Listing A.4 SqrtTransform

```

1 from pandas import read_excel
2 from matplotlib import pyplot
3 series = read_excel('MilkProduction.xls',
4                     sheetname='AdjustedData', header=0,
5                     index_col=0, parse_dates=True, squeeze=True) # you can include
6     various other parameters
7 series.plot()
8 pyplot.show()

```

Listing A.5 CalendarAdjustment

```

1 from pandas import read_excel
2 from matplotlib import pyplot
3 from statsmodels.tsa.seasonal import seasonal_decompose
4 series = read_excel('HouseSales.xls', sheetname='Data', header=0,
5                     index_col=0, parse_dates=True, squeeze=True)
6 result = seasonal_decompose(series, model='additive')
7 #result = seasonal_decompose(series, model='multiplicative')
8 result.plot()
9 pyplot.show()

```

Listing A.6 DecompositionAdditive

```

1 from pandas import read_excel
2 from matplotlib import pyplot
3 from statsmodels.tsa.seasonal import seasonal_decompose
4 series = read_excel('AirlineSales.xls', sheetname='Data', header=0,
5                   index_col=0, parse_dates=True, squeeze=True)
6 #result = seasonal_decompose(series, model='additive')
7 result = seasonal_decompose(series, model='multiplicative')
8 result.plot()
9 pyplot.show()

```

Listing A.7 DecompositionMultiplicative

```

1 import pandas as pd
2 import numpy as np
3 import matplotlib.pyplot as plt
4 from pandas import read_excel
5
6 #Reading the data from Excel files
7 series1 = read_excel('JapaneseCars.xls', sheet_name='Data', usecols=[0], header=0,
8                   squeeze=True, dtype=float)
9 series2 = read_excel('JapaneseCars.xls', sheet_name='Data', usecols=[1], header=0,
10                  squeeze=True, dtype=float)
11
12 #Generating the scatter plot for variables
13 Japanese = {'Mileage': series1, 'Price': series2}
14 df = pd.DataFrame(Japanese, columns=['Mileage', 'Price'])
15 plt.scatter(df.Mileage, df.Price)
16 plt.xlabel('Mileage (MPG)')
17 plt.ylabel('Price (US$)')
18 plt.title('Price/Mileage Relationship for Japanese cars')
19 plt.show()
20
21 #Calculating & printing the correlation between the 2 variables
22 correlval=np.corrcoef(series1, series2)
23 correlval=correlval[1,0]
24 print('\n\nThe correlation between the 2 variables is:{}'.format(correlval))

```

Listing A.8 ScatterPlot

```

1 from pandas import read_excel
2 import matplotlib.pyplot as plt
3 import pandas as pd
4 series = read_excel('Bank.xls', sheet_name='Data3', header=0,
5                   squeeze=True, dtype=float)
6
7 #Plotting the scatter plots of each variable against the other one
8 pd.plotting.scatter_matrix(series, figsize=(8, 8))
9 plt.show()
10
11 # Correlation matrix for all the variables, 2 by 2
12 CorrelationMatrix = series.corr()
13 print(CorrelationMatrix)
14 # As in the case of Demo 1.4, corrcoef can be used for the variables in couples.

```

Listing A.9 CorrelationMatrix

```

1 from pandas import read_excel
2 from matplotlib import pyplot
3 from pandas.plotting import autocorrelation_plot
4 from statsmodels.graphics.tsaplots import plot_acf
5 series1 = read_excel('CementProduction.xls', sheetname='Data', header=0,
6                     index_col=0, parse_dates=True, squeeze=True)
7 series2 = read_excel('CementProduction.xls', sheetname='SeasonalData', header=0,
8                     index_col=0, parse_dates=True, squeeze=True)
9 series2.plot(title='Seasonal plots building materials time series')
10 pyplot.show()
11
12 plot_acf(series1, title='ACF plot of building materials time series', lags=60)
13 pyplot.show()
14
15 autocorrelation_plot(series1)
16 pyplot.show()

```

Listing A.10 Autocorrelation

## Codes on Exponential Smoothing Methods

```

1 from pandas import read_excel
2 from matplotlib import pyplot
3 AustralianBeer = read_excel('BeerErrorsData.xls', sheet_name='NF1NF2', usecols =
4                             [1],
5                             header=0, squeeze=True, dtype=float)
6 NaiveF1 = read_excel('BeerErrorsData.xls', sheet_name='NF1NF2', usecols = [2],
7                     header=0, squeeze=True, dtype=float)
8 NaiveF2 = read_excel('BeerErrorsData.xls', sheet_name='NF1NF2', usecols=[3],
9                     header=0, squeeze=True, dtype=float)
10
11 # Joint plot of original data and NF1 forecasts
12 AustralianBeer.plot(legend=True)
13 NaiveF1.plot(legend=True)
14 pyplot.show()
15
16 # Joint plot of original data and NF2 forecasts
17 AustralianBeer.plot(legend=True)
18 NaiveF2.plot(legend=True)
19 pyplot.show()
20
21 # Evaluating the errors from both NF1 and NF2 methods
22 Error1 = AustralianBeer - NaiveF1
23 Error2 = AustralianBeer - NaiveF2
24 ME1 = sum(Error1)* 1.0/len(NaiveF1)
25 ME2 = sum(Error2)* 1.0/len(NaiveF2)
26 MAE1=sum(abs(Error1))*1.0/len(NaiveF1)
27 MAE2=sum(abs(Error2))*1.0/len(NaiveF2)
28 MSE1=sum(Error1**2)*1.0/len(NaiveF1)
29 MSE2=sum(Error2**2)*1.0/len(NaiveF2)
30
31 PercentageError1=(Error1/AustralianBeer)*100
32 PercentageError2=(Error2/AustralianBeer)*100
33 MPE1 = sum(PercentageError1)* 1.0/len(NaiveF1)
34 MPE2 = sum(PercentageError2)* 1.0/len(NaiveF2)
35 MAE1=sum(abs(PercentageError1))*1.0/len(NaiveF1)
36 MAE2=sum(abs(PercentageError2))*1.0/len(NaiveF2)
37
38 #Printing a summary of the errors in a tabular form
39 print('Summary of errors resulting from NF1 & NF2:')
40 import pandas as pd
41 cars = {'Errors': ['ME', 'MAE', 'MSE', 'MPE', 'MAPE'],
42         'NF1': [ME1, MAE1, MSE1, MPE1, MAE1],
43         'NF2': [ME2, MAE2, MSE2, MPE2, MAE2]
44        }
45 AllErrors = pd.DataFrame(cars, columns = ['Errors', 'NF1', 'NF2'])
46 print(AllErrors)

```

Listing B.1 ErrorMeasures



```

1 from pandas import read_excel
2 from matplotlib import pyplot
3 AustralianBeer = read_excel('BeerErrorsData.xls', sheet_name='NF1NF2', usecols =
4     [1],
5     header=0, squeeze=True, dtype=float)
6 NaiveF1 = read_excel('BeerErrorsData.xls', sheet_name='NF1NF2', usecols = [2],
7     header=0, squeeze=True, dtype=float)
8 NaiveF2 = read_excel('BeerErrorsData.xls', sheet_name='NF1NF2', usecols=[3],
9     header=0, squeeze=True, dtype=float)
10
11 # Plot for the original data set
12 AustralianBeer.plot(label='Original data', legend=True)
13 pyplot.show()
14
15 # Evaluating the errors from both NF1 and NF2 methods
16 Error1 = AustralianBeer - NaiveF1
17 Error2 = AustralianBeer - NaiveF2
18
19 # Plot of the error time series
20 Error1.plot(label='NF1 error plot', legend=True)
21 Error2.plot(label='NF2 error plot', legend=True)
22 pyplot.show()
23
24 # Creating an autocorrelation plot
25 from pandas.plotting import autocorrelation_plot
26 autocorrelation_plot(Error1)
27 autocorrelation_plot(Error2)
28 pyplot.show()

```

Listing B.2 ACFErrors

```

1 from pandas import read_excel
2 from matplotlib import pyplot
3 from numpy import sqrt
4 AustralianBeer = read_excel('BeerErrorsData.xls', sheet_name='NF1NF2', usecols =
5     [1],
6     header=0, squeeze=True, dtype=float)
7 NaiveF1 = read_excel('BeerErrorsData.xls', sheet_name='NF1NF2', usecols = [2],
8     header=0, squeeze=True, dtype=float)
9 NaiveF2 = read_excel('BeerErrorsData.xls', sheet_name='NF1NF2', usecols=[3],
10     header=0, squeeze=True, dtype=float)
11
12
13 # Evaluating the errors from both NF1 and NF2 methods
14 Error1 = AustralianBeer - NaiveF1
15 Error2 = AustralianBeer - NaiveF2
16 MSE1=sum(Error1**2)*1.0/len(NaiveF1)
17 MSE2=sum(Error2**2)*1.0/len(NaiveF2)
18
19 LowerForecast1 = NaiveF1 - 1.645*sqrt(MSE1)
20 UpperForecast1 = NaiveF1 + 1.645*sqrt(MSE1)
21
22 LowerForecast2 = NaiveF2 - 1.645*sqrt(MSE2)
23 UpperForecast2 = NaiveF2 + 1.645*sqrt(MSE2)
24
25 # Joint plot of original data and NF1 forecasts
26 AustralianBeer.plot(label='Original data')
27 NaiveF1.plot(label='NF1 forecast')
28 LowerForecast1.plot(label='NF1 lower bound')
29 UpperForecast1.plot(label='NF1 upper bound')
30 pyplot.legend()
31 pyplot.show()
32
33 # Joint plot of original data and NF2 forecasts
34 AustralianBeer.plot(label='Original data')
35 NaiveF2.plot(label='NF2 forecast')
36 LowerForecast2.plot(label='NF2 lower bound')
37 UpperForecast2.plot(label='NF2 upper bound')
38 pyplot.legend()
39 pyplot.show()

```

Listing B.3 ConfidenceInterval

```

1 from pandas import read_excel
2 from statsmodels.tsa.api import SimpleExpSmoothing
3 from matplotlib import pyplot
4 series = read_excel('ShampooSales.xls', sheetname='Data', header=0,
5                     index_col=0, parse_dates=True, squeeze=True)
6
7 # Simple Exponential Smoothing #
8
9 ## SES model 1: alpha = 0.1
10 fit1 = SimpleExpSmoothing(series).fit(smoothing_level=0.1, optimized=False)
11 fcast1 = fit1.forecast(10).rename(r'$\alpha=0.1$')
12 # Plot of fitted values and forecast of next 10 values, respectively
13 fit1.fittedvalues.plot(color='blue')
14 fcast1.plot(color='blue', legend=True)
15
16 ## SES model 2: alpha = 0.7
17 fit2 = SimpleExpSmoothing(series).fit(smoothing_level=0.7, optimized=False)
18 fcast2 = fit2.forecast(10).rename(r'$\alpha=0.7$')
19 # Plot of fitted values and forecast of next 10 values, respectively
20 fcast2.plot(color='red', legend=True)
21 fit2.fittedvalues.plot(color='red')
22
23 ## SES model 3: alpha automatically selected by the built-in optimization software
24 fit3 = SimpleExpSmoothing(series).fit()
25 fcast3 = fit3.forecast(10).rename(r'$\alpha=%s$'%fit3.model.params['smoothing_level'
26 ])
27 # Plot of fitted values and forecast of next 10 values, respectively
28 fcast3.plot(color='green', legend=True)
29 fit3.fittedvalues.plot(color='green')
30
31 # Plotting the original data together with the 3 forecast plots
32 series.plot(color='black', legend=True)
33 pyplot.show()
34
35 #Evaluating the errors
36 from sklearn.metrics import mean_squared_error
37 MSE1=mean_squared_error(fit1.fittedvalues, series)
38 MSE2=mean_squared_error(fit2.fittedvalues, series)
39 MSE3=mean_squared_error(fit3.fittedvalues, series)
40
41 print('Summary of errors resulting from SES models 1, 2 & 3:')
42 import pandas as pd
43 cars = {'Model': ['MSE'],
44        'SES model 1': [MSE1],
45        'SES model 2': [MSE2],
46        'SES model 3': [MSE3]
47        }
48 AllErrors = pd.DataFrame(cars, columns = ['Model', 'SES model 1', 'SES model 2', '
49 SES model 3'])
50 print(AllErrors)

```

Listing B.4 SimpleExpSmoothing

```

1 from pandas import read_excel
2 from statsmodels.tsa.api import Holt
3 from matplotlib import pyplot
4 series = read_excel('ShampooSales.xls', sheetname='Data', header=0,
5                     index_col=0, squeeze=True)
6
7 # Holt model 1: alpha = 0.8, beta=0.2
8 fit1 = Holt(series).fit(smoothing_level=0.8, smoothing_slope=0.2, optimized=False)
9 fcast1 = fit1.forecast(12).rename("Holt's linear trend")
10
11 fit2 = Holt(series, exponential=True).fit(smoothing_level=0.8, smoothing_slope=0.2,
12                                          optimized=False)
13 fcast2 = fit2.forecast(12).rename("Exponential trend")
14
15 fit3 = Holt(series, damped=True).fit(smoothing_level=0.8, smoothing_slope=0.2)
16 fcast3 = fit3.forecast(12).rename("Additive damped trend")
17
18 fit4 = Holt(series).fit(optimized=True)
19 fcast4 = fit4.forecast(12).rename("Additive 2 damped trend")
20
21 fit1.fittedvalues.plot(color='blue')
22 fcast1.plot(color='blue', legend=True)
23
24 fit2.fittedvalues.plot(color='red')
25 fcast2.plot(color='red', legend=True)
26
27 fit3.fittedvalues.plot(color='green')
28 fcast3.plot(color='green', legend=True)
29
30 fcast4.plot(color='yellow', legend=True)
31
32 series.plot(color='black', legend=True)
33 pyplot.show()
34
35 #Evaluating the errors
36 from sklearn.metrics import mean_squared_error
37 MSE1=mean_squared_error(fit1.fittedvalues, series)
38 MSE2=mean_squared_error(fit2.fittedvalues, series)
39 MSE3=mean_squared_error(fit3.fittedvalues, series)
40
41 print('Summary of errors resulting from SES models 1, 2 & 3:')
42 import pandas as pd
43 cars = {'Model': ['MSE1'],
44         'LES model 1': [MSE1],
45         'LES model 2': [MSE2],
46         'LES model 3': [MSE3]
47        }
48 AllErrors = pd.DataFrame(cars, columns = ['Model', 'LES model 1', 'LES model 2', '
49                                     LES model 3'])
50 print(AllErrors)

```

Listing B.5 Holt

```

1 from pandas import read_excel
2 import pandas as pd
3 from statsmodels.tsa.api import ExponentialSmoothing
4 from matplotlib import pyplot
5 series = read_excel('CementProduction.xls', sheetname='Data', header=0,
6                   index_col=0, parse_dates=True, squeeze=True)
7
8 # =====
9 # Holt-Winter method in different scenarios #
10 # =====
11 #
12 # Model 1: Holt-Winter method with additive trend and seasonality
13 # Here, alpha = 0.3, beta=0.5, gamma=0.7
14 # =====
15 fit1 = ExponentialSmoothing(series, seasonal_periods=12, trend='add', seasonal='add'
16                             ).fit(smoothing_level = 0.3, smoothing_slope=0.5, smoothing_seasonal=0.7)
17 fit1.fittedvalues.plot(color='red')
18
19 # =====
20 # Model 2: Holt-Winter method with additive trend and multiplicative seasonality
21 # Here, alpha = 0.3, beta=0.5, gamma=0.7
22 # =====
23 fit2 = ExponentialSmoothing(series, seasonal_periods=12, trend='add', seasonal='mul'
24                             ).fit(smoothing_level = 0.3, smoothing_slope=0.5, smoothing_seasonal=0.7)
25 fit2.fittedvalues.plot(color='blue')
26
27 # =====
28 # Model 3: Holt-Winter method with additive trend and seasonality
29 # Here, the parameters alpha, beta, and gamma are optimized
30 # =====
31 fit3 = ExponentialSmoothing(series, seasonal_periods=12, trend='add', seasonal='add'
32                             ).fit()
33 fit3.fittedvalues.plot(color='green')
34
35 # =====
36 # Model 4: Holt-Winter method with additive trend and multiplicative seasonality
37 # Here, the parameters alpha, beta, and gamma are optimized
38 # =====
39 fit4 = ExponentialSmoothing(series, seasonal_periods=12, trend='add', seasonal='mul'
40                             ).fit()
41 fit4.fittedvalues.plot(color='yellow')
42
43 print("Forecasting Cement Production with Holt-Winters method")
44 # =====
45 # Time and forecast plots
46 # =====
47 series.rename('Time plot of original series').plot(color='black', legend=True)
48 fit1.forecast(12).rename('Model 1: HW-additive seasonality').plot(color='red',
49                          legend=True)
50 fit2.forecast(12).rename('Model 2: HW-multiplicative seasonality').plot(color='blue',
51                          legend=True)
52 fit3.forecast(12).rename('Model 3: Opt HW-additive seasonality').plot(color='green',
53                          legend=True)
54 fit4.forecast(12).rename('Model 4: Opt HW-multiplicative seasonality').plot(color='
55 yellow', legend=True)
56 pyplot.xlabel('Dates')
57 pyplot.ylabel('Values')
58 pyplot.title('HW method-based forecasts for cement production')
59 pyplot.show()
60
61 # =====
62 # Evaluating the errors
63 # =====
64 from sklearn.metrics import mean_squared_error
65 MSE1=mean_squared_error(fit1.fittedvalues, series)
66 MSE2=mean_squared_error(fit2.fittedvalues, series)
67 MSE3=mean_squared_error(fit3.fittedvalues, series)
68 MSE4=mean_squared_error(fit4.fittedvalues, series)
69
70 # =====
71 # Printing the paramters and errors for each scenario
72 # =====
73 results=pd.DataFrame(index=[r"alpha", r"beta", r"gamma", r"l0", "b0", "MSE"])
74 params = ['smoothing_level', 'smoothing_slope', 'smoothing_seasonal', 'initial_level',
75          'initial_slope']
76 results["HW model 1"] = [fit1.params[p] for p in params] + [MSE1]
77 results["HW model 2"] = [fit2.params[p] for p in params] + [MSE2]
78 results["HW model 3"] = [fit3.params[p] for p in params] + [MSE3]
79 results["HW model 4"] = [fit4.params[p] for p in params] + [MSE4]

```

```

72 print(results)
73
74 #=====
75 # Evaluating and plotting the residual series for each scenario
76 #=====
77 residuals1= fit1.fittedvalues - series
78 residuals2= fit2.fittedvalues - series
79 residuals3= fit3.fittedvalues - series
80 residuals4= fit4.fittedvalues - series
81 residuals1.rename('residual plot for model 1').plot(color='red', legend=True)
82 residuals2.rename('residual plot for model 2').plot(color='blue', legend=True)
83 residuals3.rename('residual plot for model 3').plot(color='green', legend=True)
84 residuals4.rename('residual plot for model 4').plot(color='yellow', legend=True)
85 pyplot.title('Residual plots for models 1-4')
86 pyplot.show()
87
88 #=====
89 # ACF plots of the residual series for each scenario
90 #=====
91 from statsmodels.graphics.tsaplots import plot_acf
92 plot_acf(residuals1, title='Residual ACF for model 1', lags=50)
93 plot_acf(residuals2, title='Residual ACF for model 2', lags=50)
94 plot_acf(residuals3, title='Residual ACF for model 3', lags=50)
95 plot_acf(residuals4, title='Residual ACF for model 4', lags=50)
96 pyplot.show()

```

Listing B.6 ExponentialSmoothing

## Codes on ARIMA Methods

```

1 from random import gauss
2 from random import seed
3 from pandas import Series
4 from statsmodels.graphics.tsaplots import plot_acf, plot_pacf
5 from matplotlib import pyplot
6
7 # seed random number generator
8 seed(1)
9 # create white noise series
10 series = [gauss(0.0, 1.0) for i in range(1000)]
11
12 # Once created, we can wrap the list in a Pandas Series for convenience.
13 series = Series(series)
14
15 # summary statistics of the artificially generated series
16 print('Statistics of the artificially generated series:')
17 print(series.describe())
18
19 # line plot of the artificially generated series
20 series.plot(title='Time plot of a white noise model')
21 pyplot.show()
22
23 # histogram plot of the artificially generated series
24 series.hist()
25
26 # ACF plot of an artificially generated white noise time series
27 plot_acf(series, title='ACF of a white noise model', lags=50)
28
29 # PACF plot of an artificially generated white noise time series
30 plot_pacf(series, title='PACF of a white noise model', lags=50)
31 pyplot.show()

```

Listing C.1 WhiteNoiseModel

```

1 from pandas import read_excel
2 from matplotlib import pyplot
3 from statsmodels.graphics.tsaplots import plot_acf, plot_pacf
4 series = read_excel('DowJones.xls', sheet_name='Data2', header=0, index_col=0,
5 parse_dates=True, squeeze=True)
6
7 # ACF plot on 50 time lags
8 plot_acf(series, title='ACF of Dow Jones time series', lags=50)
9
10 # PACF plot on 50 time lags
11 plot_pacf(series, title='PACF of Dow Jones time series', lags=50)
12 pyplot.show()

```

Listing C.2 AcfPacfPlotNonStationarity.py

```

1 from pandas import read_excel
2 import matplotlib.pyplot as plt
3 series = read_excel('BuildingMaterials.xls', sheetname='Data', header=0,
4 index_col=0, parse_dates=True, squeeze=True)
5 series.plot(color='red')
6 plt.xlabel('Dates')
7 plt.ylabel('Production values')
8 plt.title('Building materials production from 1986 to 2008')
9 plt.show()
10 #-----
11 from pandas import read_excel
12 from matplotlib import pyplot
13 from statsmodels.graphics.tsaplots import plot_acf, plot_pacf
14 series = read_excel('BuildingMaterials.xls', sheet_name='Data', usecols = [1],
15 header=0, squeeze=True, dtype=float)
16
17 # ACF plot on 50 time lags
18 plot_acf(series, title='ACF of building materials time series', lags=50)
19
20 # PACF plot on 50 time lags
21 plot_pacf(series, title='PACF of building materials time series', lags=50)
22 pyplot.show()
23 #-----
24 # calculate stationarity test of time series data
25 #from pandas import read_csv
26 from statsmodels.tsa.stattools import adfuller
27 #series = read_csv('airline-passengers.csv', header=0, index_col=0, parse_dates=True
28 ,squeeze=True)
29 X = series.values
30 result = adfuller(X)
31 print('ADF Statistic: %f' % result[0])
32 print('p-value: %f' % result[1])
33 print('Critical Values:')
34 for key, value in result[4].items():
35     print('\t%s: %.3f' % (key, value))

```

Listing C.3 ADFtest.py

```

1 from pandas import read_excel
2 from statsmodels.graphics.tsaplots import plot_acf, plot_pacf
3 from matplotlib import pyplot
4
5 series = read_excel('DataAR1model.xls', sheet_name='ARdata', header=0, index_col=0,
6 squeeze=True)
7
8 # Time, ACF, and PACF plots for original data
9 pyplot.plot(series)
10 pyplot.title('Time plot AR1 data')
11 plot_acf(series, title='ACF plot of AR1 data', lags=20)
12 plot_pacf(series, title='PACF plot of AR1 data', lags=20)
13 pyplot.show()

```

Listing C.4 AcfPacfAR1model.py

```

1 from pandas import read_excel
2 from statsmodels.graphics.tsaplots import plot_acf, plot_pacf
3 from matplotlib import pyplot
4
5 series = read_excel('DataMA1model.xls', sheet_name='MAdata', usecols = [1],
6                   header=0, squeeze=True)
7
8 # Time, ACF, and PACF plots for original data
9 pyplot.plot(series)
10 pyplot.title('Time plot MA1 data')
11 plot_acf(series, title='ACF plot of MA1 data', lags=20)
12 plot_pacf(series, title='PACF plot of MA1 data', lags=20)
13 pyplot.show()

```

Listing C.5 AcfPacfMA1model.py

```

1 #=====
2 #Code for identifying the parameters with smallest AIC
3 #=====
4 from pandas import read_excel
5 from statsmodels.tsa.arima_model import ARIMA
6 import warnings
7 import itertools
8
9 series = read_excel('BuildingMaterials.xls', sheet_name='Data', header=0, index_col
10 =0, parse_dates=True, squeeze=True)
11
12 #define the p, d and q parameters to take any value between 0 and 2
13 p = d = q = range(0, 3)
14
15 #generate all different combinations of p, q and q triplets
16 pdq = list(itertools.product(p, d, q))
17
18 #identification of best model from different combinations of pdq
19 warnings.filterwarnings("ignore") # specify to ignore warning messages
20 best_score, best_param = float("inf"), None
21 for param in pdq:
22     try:
23         mod = ARIMA(series, param)
24         results = mod.fit()
25         if results.aic < best_score:
26             best_score, best_param = results.aic, param
27             print('ARIMA{} - AIC:{}'.format(param, results.aic))
28     except:
29         continue
30 print('The best model is ARIMA{} - AIC:{}'.format(best_param, best_score))

```

Listing C.6 AutomaticOrderARIMA.py

```

1 from pandas import read_excel
2 import matplotlib.pyplot as plt
3 from statsmodels.tsa.arima_model import ARIMA
4
5 series = read_excel('BuildingMaterials.xls', sheet_name='Data', header=0,
6                   index_col=0, parse_dates=True, squeeze=True)
7
8 #ARIMA(1,1,2) model
9 model = ARIMA(series, order=(1,1,2))
10
11 # generates ARIMA Model Results table
12 model_fit = model.fit(dispatch=0)
13 fitted = model_fit.fit(dispatch=1)
14 print(model_fit.summary())
15
16 # Actual vs Fitted
17 model_fit.plot_predict(dynamic=False)
18 plt.show()
19
20 # Forecast
21 fc, se, conf = fitted.forecast(15, alpha=0.005) # 95% conf
22
23 pred_ci = pred_uc.conf_int()
24 # plotting forecasts ahead
25 ax = series.plot(label='Original data')
26 pred_uc.predicted_mean.plot(ax=ax, label='Forecast values', title='Forecast plot
27   with confidence interval')
28 ax.fill_between(pred_ci.index,
29                pred_ci.iloc[:, 0],
30                pred_ci.iloc[:, 1], color='k', alpha=.25)
31 plt.legend()
32 plt.show()
33 #=====
34 #=====
35 # MSE evaluation
36 y_forecasted = pred.predicted_mean
37 y_truth = series['2000-01-01':]
38 # Compute the mean square error
39 MSE = ((y_forecasted - y_truth) ** 2).mean()
40 print('MSE of the forecasts is {}'.format(round(MSE, 2)))

```

Listing C.7 ARIMA.py



```
1 #removing seasonality from time series using seasonal differencing
2 from pandas import read_excel
3 from statsmodels.graphics.tsaplots import plot_acf, plot_pacf
4 from matplotlib import pyplot
5
6 series = read_excel('Electricity.xls', sheet_name='ELEC', header=0, index_col=0,
7     parse_dates=True, squeeze=True)
8
9 #time, ACF, and PACF plots for original data
10 pyplot.plot(series)
11 pyplot.title('Time plot original data')
12 plot_acf(series, title='ACF plot of original data', lags=50)
13 plot_pacf(series, title='PACF plot of original data', lags=50)
14 pyplot.show()
15
16 #seasonal difference
17 X = series.values
18 SeasDiff = list()
19 for i in range(12, len(X)):
20     value = X[i] - X[i - 12]
21     SeasDiff.append(value)
22
23 #time, ACF, and PACF plots for the seasonally differenced series
24 pyplot.plot(SeasDiff)
25 pyplot.title('Time plot seasonally differenced series')
26 plot_acf(SeasDiff, title='ACF plot of seasonally differenced series', lags=50)
27 plot_pacf(SeasDiff, title='PACF plot of seasonally differenced series', lags=50)
28 pyplot.show()
29
30 #seasonal + first difference
31 Y = SeasDiff
32 SeasFirstDiff = list()
33 for i in range(1, len(Y)):
34     value = Y[i] - Y[i - 1]
35     SeasFirstDiff.append(value)
36 pyplot.plot(SeasFirstDiff)
37 pyplot.title('Time plot seasonally + first differenced series')
38 plot_acf(SeasFirstDiff, title='ACF plot of seasonally + first differenced series',
39     lags=50)
40 plot_pacf(SeasFirstDiff, title='PACF plot of seasonally + first differenced series',
41     lags=50)
42 pyplot.show()
```

**Listing C.8** FirstPlusSeasonalDifference.py

```

1 #=====
2 #Code for identifying the parameters with smallest AIC
3 #=====
4 from pandas import read_excel
5 import matplotlib.pyplot as plt
6 import statsmodels.api as sm
7 import warnings
8 import itertools
9 plt.style.use('fivethirtyeight')
10
11 series = read_excel('BuildingMaterials.xls', sheet_name='Data', header=0, index_col
12                    =0, parse_dates=True, squeeze=True)
13
14 #Define the p, d and q parameters to take any value between 0 and 1
15 p = d = q = range(0, 2)
16
17 # Generate all different combinations of p, q and q triplets
18 pdq = list(itertools.product(p, d, q))
19
20 # Generate all different combinations of seasonal p, q and q triplets (i.e., P, D, Q
21 )
22 seasonal_pdq = [(x[0], x[1], x[2], 12) for x in list(itertools.product(p, d, q))]
23
24 # Identification of best model from different combinations of pdq and seasonal_pdq
25 warnings.filterwarnings("ignore") # specify to ignore warning messages
26 best_score, best_param, best_paramSeasonal = float("inf"), None, None
27
28 for param in pdq:
29     for param_seasonal in seasonal_pdq:
30         try:
31             mod = sm.tsa.statespace.SARIMAX(series, order=param, seasonal_order=
32             param_seasonal, enforce_invertibility=False)
33             results = mod.fit()
34             if results.aic < best_score:
35                 best_score, best_param, best_paramSeasonal = results.aic, param,
36                 param_seasonal
37             print('ARIMA{x} - AIC:{}'.format(param, param_seasonal, results.aic))
38         except:
39             continue
40 print('The best model is ARIMA{x} - AIC:{}'.format(best_param, best_paramSeasonal,
41 best_score))

```

Listing C.9 AutomaticOrderSARIMAX.py

```

1 from pandas import read_excel
2 import pandas as pd
3 import matplotlib.pyplot as plt
4 import statsmodels.api as sm
5 plt.style.use('fivethirtyeight')
6
7 #=====
8 #Loading the data set
9 df = read_excel('BuildingMaterials.xls', sheet_name='Data', header=0,
10               index_col=0, parse_dates=True, squeeze=True)
11 #=====
12
13 #=====
14 #Fitting the ARIMA model and printing related statistics
15 # ARIMA(0, 1, 1)(0,1,1)12 in this case;
16 #this one is based on MA1 model template
17 mod = sm.tsa.statespace.SARIMAX(df, order=(1,1,1), seasonal_order=(0,1,1,12))
18 results = mod.fit(dispatch=False)
19 print(results.summary())
20 #=====
21
22 #GRAPH BLOCK1=====
23 #Printing the graphical statistics of model (correlogram = ACF plot)
24 results.plot_diagnostics(figsize=(15, 12))
25 plt.show()
26 #=====
27
28 #GRAPH BLOCK2=====
29 # printing the part of forecasts fitted to original data (for accuracy evaluation)
30 # the start date has to be provided; hence should be a time within the original time
   series;
31 # in this case, it is to start on 01 January 2000
32 pred = results.get_prediction(start=pd.to_datetime('2000-01-01'), dynamic=False)
33 pred_ci = pred.conf_int()
34
35 # printing one-step ahead forecasts together with the original data set;
36 # hence, the starting point (year) of the data set is required
37 # in order to build the plot of original series
38 ax = df['1986':].plot(label='Original data')
39 pred.predicted_mean.plot(ax=ax, label='One-step ahead Forecast', alpha=.7)
40 ax.fill_between(pred_ci.index,
41               pred_ci.iloc[:, 0],
42               pred_ci.iloc[:, 1], color='k', alpha=.2)
43
44 plt.legend()
45 plt.show()
46 #=====
47
48 #GRAPH BLOCK3=====
49 # Get forecast 20 steps ahead in future
50 pred_uc = results.get_forecast(steps=20)
51 # Get confidence intervals of forecasts
52 pred_ci = pred_uc.conf_int()
53 # plotting forecasts ahead
54 ax = df.plot(label='Original data')
55 pred_uc.predicted_mean.plot(ax=ax, label='Forecast values', title='Forecast plot
   with confidence interval')
56 ax.fill_between(pred_ci.index,
57               pred_ci.iloc[:, 0],
58               pred_ci.iloc[:, 1], color='k', alpha=.25)
59
60 plt.legend()
61 plt.show()
62 #=====
63
64 #=====
65 # MSE evaluation
66 y_forecasted = pred.predicted_mean
67 y_truth = df['2000-01-01':]
68 # Compute the mean square error
69 MSE = ((y_forecasted - y_truth) ** 2).mean()
70 print('MSE of the forecasts is {}'.format(round(MSE, 2)))
71 #=====

```

Listing C.10 SARIMAX.py

## Codes on the Regression Analysis and Application to Forecasting

```

1 from pandas import read_excel
2 from statsmodels.formula.api import ols
3 series = read_excel('Bank.xls', sheet_name='Data2', header=0,
4                   squeeze=True, dtype=float)
5
6 #reading the basic variables
7 DEOM = series.DEOM
8 AAA = series.AAA
9 Tto4 = series.Tto4
10 D3to4 = series.D3to4
11
12 #Regression model(s)
13 formula = 'DEOM ~ AAA + Tto4 + D3to4'
14
15 #Ordinary Least Squares (OLS)
16 results = ols(formula, data=series).fit()
17 print(results.summary())
18
19 # Here the main table is the first one,
20 # where the main statistics are the R-squared (line 1)
21 # and the P-value; i.e., Prob (F-statistic)

```

Listing D.1 RegressionAnalysis.py

```

1 from pandas import read_excel
2 from statsmodels.tsa.api import Holt
3 #from matplotlib import pyplot
4 import matplotlib.pyplot as plt
5 import numpy as np
6 from statsmodels.formula.api import ols
7 series = read_excel('Bank.xls', sheet_name='Data2', header=0,
8                   squeeze=True, dtype=float)
9
10 # Reading the basic variables
11 DEOM = series.DEOM
12 AAA = series.AAA
13 Tto4 = series.Tto4
14 D3to4 = series.D3to4
15
16 # Forecasting for AAA using Holt's linear method
17 fit1 = Holt(AAA).fit(optimized=True)
18 fcast1 = fit1.forecast(6).rename("Additive 2 damped trend")
19 fit1.fittedvalues.plot(color='red')
20 fcast1.plot(color='red', legend=True)
21 AAA.plot(color='black', legend=True)
22 plt.title('Forecast of AAA with Holt linear method')
23 plt.show()
24
25 # Forecasting for Tto4 using Holt's linear method
26 fit2 = Holt(Tto4).fit(optimized=True)
27 fcast2 = fit2.forecast(6).rename("Additive 2 damped trend")
28 fit2.fittedvalues.plot(color='red')
29 fcast2.plot(color='red', legend=True)
30 Tto4.plot(color='black', legend=True)
31 plt.title('Forecast of 3to4 with Holt linear method')
32 plt.show()
33
34 # Forecasting for D3to4 using Holt's linear method
35 fit3 = Holt(D3to4).fit(smoothing_level=0.8, smoothing_slope=0.2, optimized=False)
36 #fit3 = Holt(D3to4).fit(optimized=True)
37 fcast3 = fit3.forecast(6).rename("Additive 2 damped trend")
38 fit3.fittedvalues.plot(color='red')
39 fcast3.plot(color='red', legend=True)
40 D3to4.plot(color='black', legend=True)
41 plt.title('Forecast of D3to4 with Holt linear method')
42 plt.show()

```

```

43
44 # Building the regression based forecast for main variable, DEOM
45 # Regression model(s)
46 formula = 'DEOM ~ AAA + Tto4 + D3to4'
47
48 # ols generate statistics and the parameters b0, b1, etc., of the model
49 results = ols(formula, data=series).fit()
50 results.summary()
51 b0 = results.params.Intercept
52 b1 = results.params.AAA
53 b2 = results.params.Tto4
54 b3 = results.params.D3to4
55
56 # putting the fitted values of the forecasts of AAA, Tto4, and D3to4 in arrays
57 a1 = np.array(fit1.fittedvalues)
58 a2 = np.array(fit2.fittedvalues)
59 a3 = np.array(fit3.fittedvalues)
60
61 # Building the fitted part of the forecast of DEOM
62 F=a1
63 for i in range(53):
64     F[i] = b0 + a1[i]*b1 + a2[i]*b2 + a3[i]*b3
65
66 # putting the values of the forecasts of AAA, Tto4, and D3to4 in arrays
67 v1=np.array(fcast1)
68 v2=np.array(fcast2)
69 v3=np.array(fcast3)
70
71 # Building the 6 values of the forecast ahead
72 E=v1
73 for i in range(6):
74     E[i] = b0 + v1[i]*b1 + v2[i]*b2 + v3[i]*b3
75
76
77 # Joining the fitted values of the forecast and the points ahead
78 K=np.append(F, E)
79
80 # Reading the original DEOM time series for all the 59 periods
81 DEOMfull0 = read_excel('Bank.xls', sheet_name='Data4', header=0,
82                       squeeze=True, dtype=float)
83
84 #####
85 # Evaluating the MSE to generate the confidence interval
86 DEOMfull = DEOMfull0.DEOMfull
87 values=DEOMfull[0:53]
88 Error = values - F
89 MSE=sum(Error**2)*1.0/len(F)
90
91 ## Lower and upper bounds of forecasts for z=1.282; see equation (2.2) in Chap 2.
92 #LowerE = E - 1.282*MSE
93 #UpperE = E + 1.282*MSE
94
95 LowerE = DEOMfull0.LowerE
96 UpperE = DEOMfull0.UpperE
97
98 print(LowerE)
99 #####
100
101 # Plotting the graphs of K and DEOMfull with legends
102 from matplotlib.legend_handler import HandlerLine2D
103 line1, = plt.plot(K, color='red', label='Forecast values')
104 line2, = plt.plot(DEOMfull, color='black', label='Original data')
105 line3, = plt.plot(LowerE, color='blue', label='Lower forecast')
106 line4, = plt.plot(UpperE, color='orange', label='Upper forecast')
107 plt.legend(handler_map={line1: HandlerLine2D(numpoints=4)})
108 plt.title('DEOM regression forecast with confidence interval')
109 plt.show()
110
111 # Proceeding as as in other demos, forecasts
112 # can be generated for other scenarios; i.e., with different combinations of
    variables

```

Listing D.2 RegressionForecast.py

**Acknowledgements** The lecture notes [15] (based on the textbooks [1, 2]), which have served as base for the mathematical background of the data analysis and forecasting tools discussed in this paper, have been developed and refined over the years thanks to contributions from many colleagues from the Southampton OR Group, in particular, I would like to mention Russell Cheng and Honora Smith for preparing and delivering the Forecasting course for many years, until the 2013–2014 academic year. The author would like to thank the referee and the guest editor for their constructive feedback, which led to improvements in the presentation of the paper.

**Funding** This work is supported by the EPSRC grant with reference EP/V049038/1 and the Alan Turing Institute under the EPSRC grant EP/N510129/1.

**Data Availability** All the data sets used for the illustrations in this paper are based on the book [1]; all the data sets related to this book are available online: <https://cloud.r-project.org/web/packages/fma/index.html>. As for the specific times series from this database used in this paper, they are available via the following link, together with all the `py` files associated to the codes in the appendix: <https://github.com/abzemkoho/forecasting>.

## Declarations

**Conflict of Interest** The author declares no competing interests.

**Open Access** This article is licensed under a Creative Commons Attribution 4.0 International License, which permits use, sharing, adaptation, distribution and reproduction in any medium or format, as long as you give appropriate credit to the original author(s) and the source, provide a link to the Creative Commons licence, and indicate if changes were made. The images or other third party material in this article are included in the article's Creative Commons licence, unless indicated otherwise in a credit line to the material. If material is not included in the article's Creative Commons licence and your intended use is not permitted by statutory regulation or exceeds the permitted use, you will need to obtain permission directly from the copyright holder. To view a copy of this licence, visit <http://creativecommons.org/licenses/by/4.0/>.

## References

1. Makridakis S, Wheelwright SC, Hyndman RJ (2008) Forecasting methods and applications. J Wiley & Sons
2. Hyndman RJ, Athanasopoulos G (2018) Forecasting: principles and practice. OTexts
3. Deng L (2014) A tutorial survey of architectures, algorithms, and applications for deep learning. APSIPA Transactions on Signal and Information Processing 3
4. Hamzaçebi C, Akay D, Kutay F (2009) Comparison of direct and iterative artificial neural network forecast approaches in multi-periodic time series forecasting. Expert Systems with Applications 36(Part 2):3839–3844
5. Robinson C, Dilkina B, Hubbs J, Zhang W, Guhathakurta S, Brown MA et al (2017) Machine learning approaches for estimating commercial building energy consumption. Appl Energy 208(Supplement C):889–904
6. Salaken SM, Khosravi A, Nguyen T, Nahavandi S (2017) Extreme learning machine based transfer learning algorithms: a survey. Neurocomputing 267:516–524
7. Voyant C, Notton G, Kalogirou S, Nivet ML, Paoli C, Motte F et al (2017) Machine learning methods for solar radiation forecasting: a review. Renew Energy 105(Supplement C):569–582
8. Zhang G, Eddy Patuwo B, Hu YM (1998) Forecasting with artificial neural networks: the state of the art. Int J Forecast 14(1):35–62
9. Zhang L, Suganthan PN (2016) A survey of randomized algorithms for training neural networks. Inf Sci 364-365(Supplement C):146-155
10. Adya M, Collopy F (1998) How effective are neural networks at forecasting and prediction? A review and evaluation. J Forecast 17(56):481–495

11. Chatfield C (1993) Neural networks: forecasting breakthrough or passing fad? *Int J Forecast* 9(1):1–3
12. Sharda R, Patil RB (1992) Connectionist approach to time series prediction: an empirical test. *J Intell Manuf* 3(1):317–323
13. Makridakis S, Spiliotis E, Assimakopoulos V (2018) Statistical and machine learning forecasting methods: concerns and ways forward. *PLoS ONE* 13(3):e0194889
14. Makridakis S, Spiliotis E, Assimakopoulos V (2018) The M4 Competition: results, findings, conclusion and way forward. *Int J Forecast* 34(4):802–808
15. Zemkoho A (2021) Forecasting. School of Mathematical Sciences, University of Southampton, Lecture Notes
16. Brownlee J (2018 ) Introduction to time series forecasting with Python. Ebook available at <https://machinelearningmastery.com/introduction-to-time-series-forecasting-with-Python/>, (Accessed on 15 Nov 2019)
17. Korstanje J (2021) Advanced forecasting with Python. Apress
18. Lazerri F (2021) Machine learning for time series forecasting with Python. J Wiley & Sons
19. Dickey DA, Fuller WA (1979) Distribution of the estimators for autoregressive time series with a unit root. *J Am Stat Assoc* 74:427–431
20. Montgomery DC, Peck EA, Vining GG (2021) Introduction to linear regression analysis. J Wiley & Sons

**Publisher's Note** Springer Nature remains neutral with regard to jurisdictional claims in published maps and institutional affiliations.