



Correction to: Designing the Swedish Crime Harm Index: an Evidence-Based Strategy

Fredrik Kärrholm¹ · Peter Neyroud² · John Smaaland¹

Published online: 2 May 2020
© Springer Nature Switzerland AG 2020

Correction to: Camb J Evid Based Polic

<https://doi.org/10.1007/s41887-020-00041-4>

There was an error in this article as originally published:
The graphic for Figure 3 appeared with the caption for Map 1, and the graphic for Map 1 appeared with the caption for Figure 3.
The original article has been corrected.

The online version of the original article can be found at <https://doi.org/10.1007/s41887-020-00041-4>

✉ Peter Neyroud
pwn22@cam.ac.uk

¹ Swedish National Police Authority, Stockholm, Sweden

² Institute of Criminology, University of Cambridge, Cambridge, England

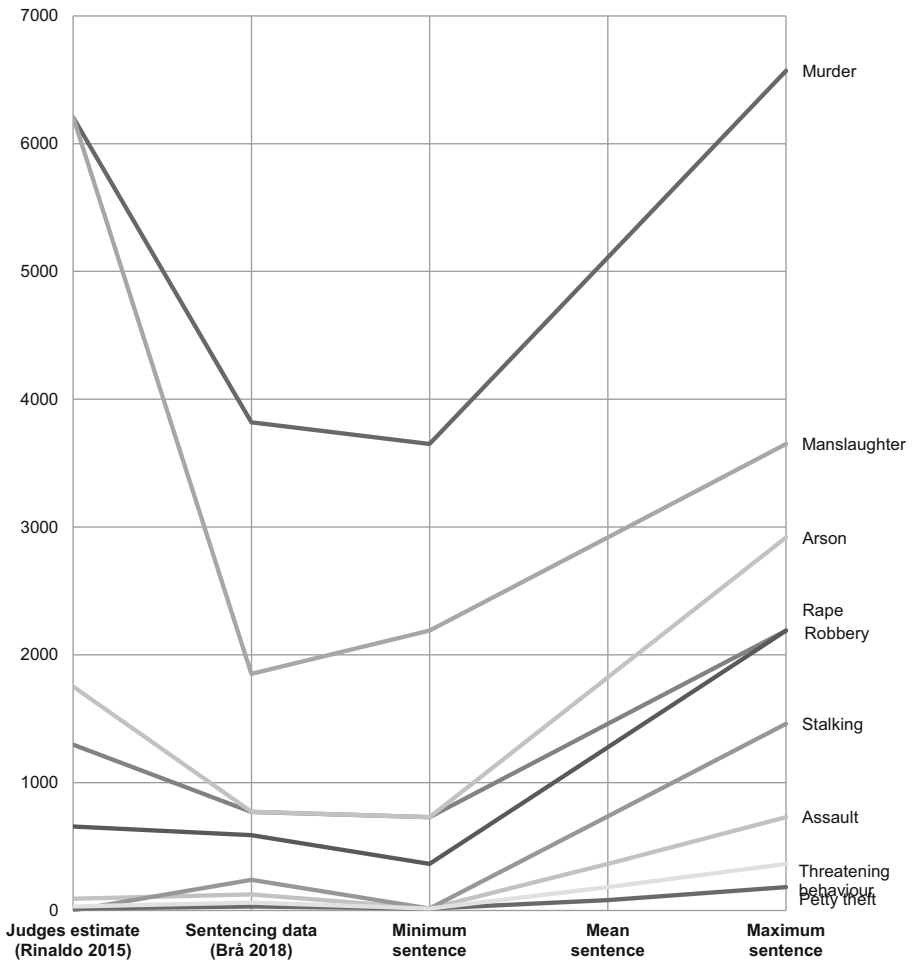


Fig. 1 Outcome of the various possible methods of creating a Swedish CHI—days of prison v offence types

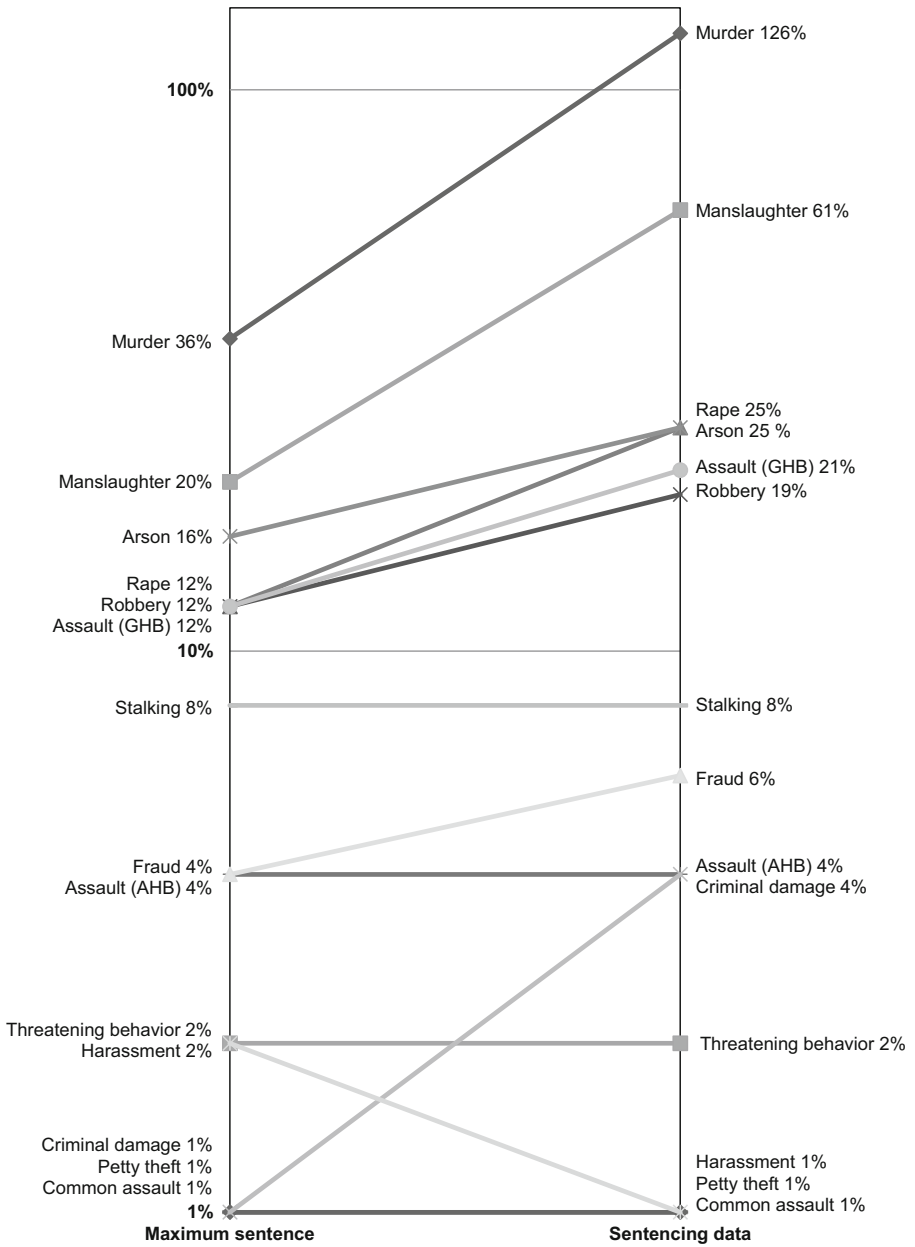
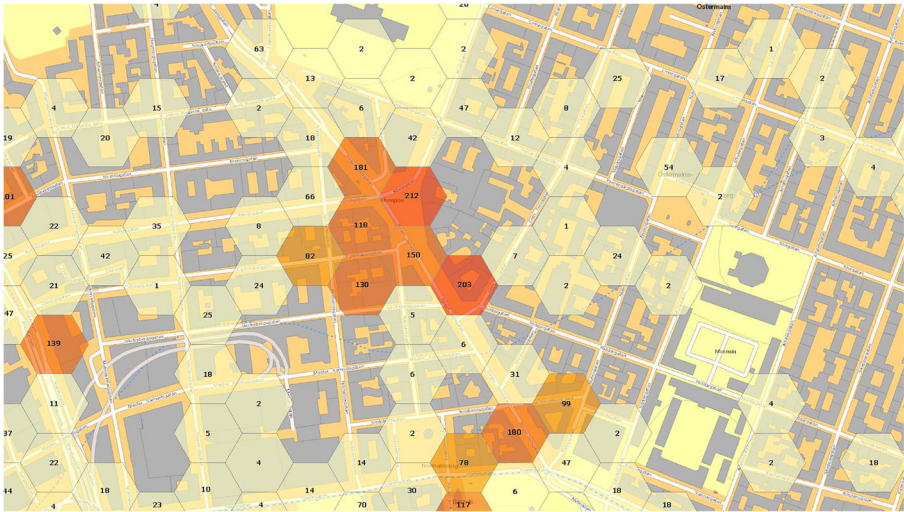
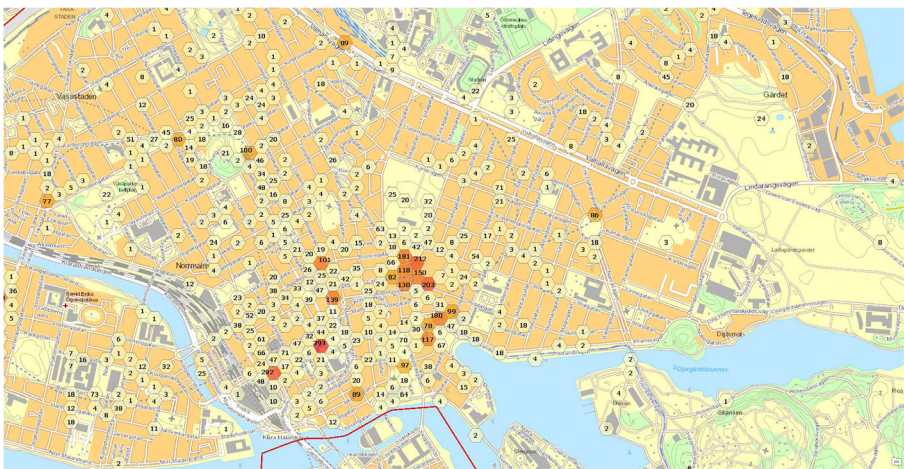


Fig. 2 Percentage difference: maximum sentence and sentencing data (logarithmic scale)



Map 1 Crime harm spots, Stockholm City, 2018, regarding public violent crimes, weekend nights (22.00–04.00)



Map 2 Crime harm spots, Stureplan in Stockholm City, 2018, regarding public violent crimes, weekend nights (22.00–04.00)

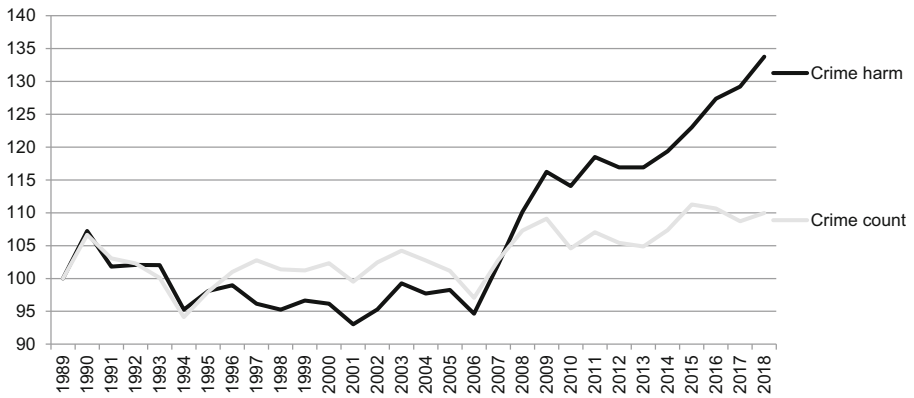


Fig. 3 Comparison between reported crime and total crime harm, 1989–2018, per capita. Crimes that results from self-initiated enforcement are excluded (traffic and narcotic crimes). Source: official statistics from The Swedish National Council for Crime Prevention and Statistics Sweden

Publisher's note Springer Nature remains neutral with regard to jurisdictional claims in published maps and institutional affiliations.