



# Correction: An Example of Combining Expert Judgment and Small Area Projection Methods: Forecasting for Water District Needs

David Swanson<sup>1,2,3</sup> · Tom Bryan<sup>4</sup> · Mark Hattendorf<sup>5</sup> · Kelly Comstock<sup>6</sup> · Lauren Starosta<sup>6</sup> · Robert Schmidt<sup>5</sup>

Accepted: 14 December 2023

© The Author(s), under exclusive licence to Springer Nature Switzerland AG 2024

**Correction to: *Spatial Demography* (2023) 11:8**

<https://doi.org/10.1007/s40980-023-00119-3>

In this article the wrong figure appeared as Fig. 2. Insert incorrectly states 'Blocks'.

---

The original article can be found online at <https://doi.org/10.1007/s40980-023-00119-3>.

---

✉ David Swanson  
dswanson@ucr.edu

<sup>1</sup> University of California Riverside, Riverside, CA 92521, USA

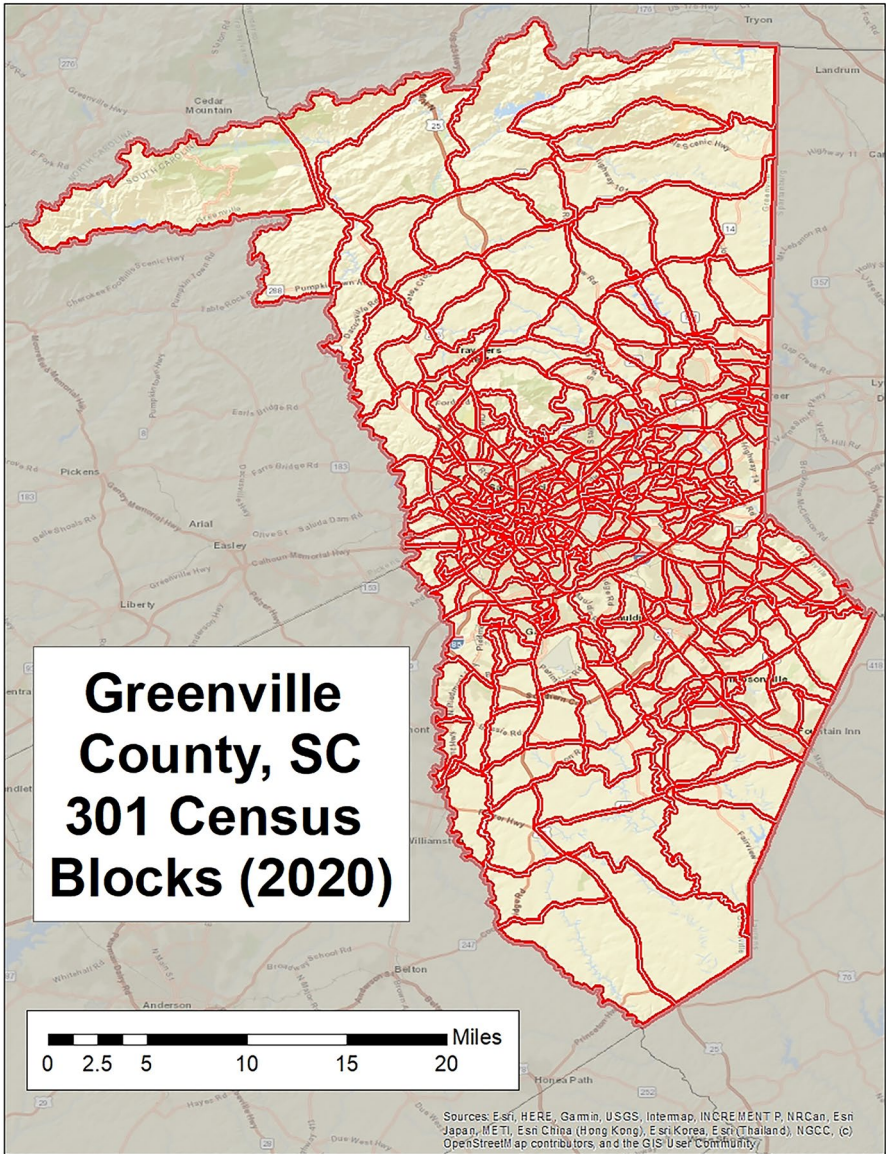
<sup>2</sup> Population Research Center, Portland State University, Portland, OR 97201, USA

<sup>3</sup> Center for Studies in Demography and Ecology, University of Washington, Seattle, WA 98195, USA

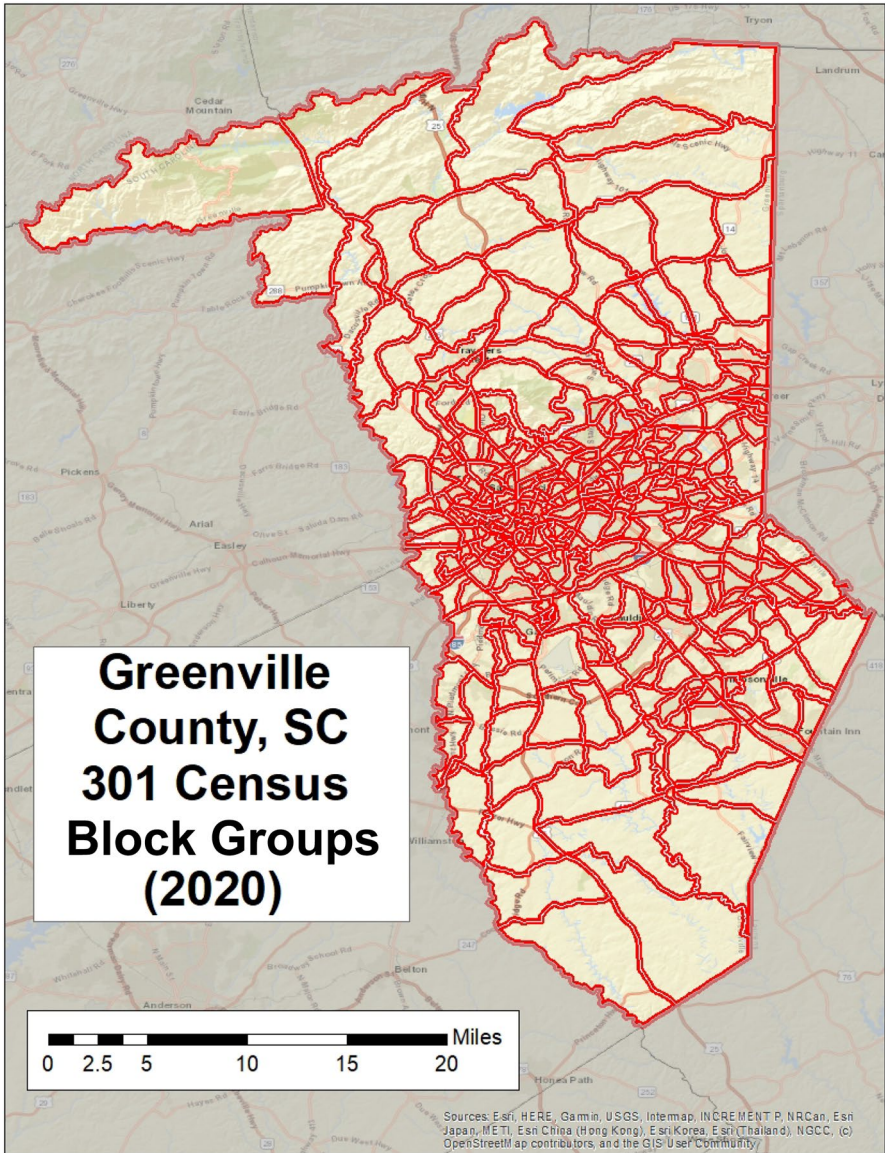
<sup>4</sup> Bryan Geodemographics, Midlothian, VA 23114, USA

<sup>5</sup> Greenville Water, Greenville, SC 29601, USA

<sup>6</sup> Brown and Caldwell, Columbia, SC 29210, USA



The figure should have appeared as shown below. Insert states 'Block groups'.



The original article has been corrected.

**Publisher's Note** Springer Nature remains neutral with regard to jurisdictional claims in published maps and institutional affiliations.