



## Correction: Time varying effects in survival analysis: a novel data-driven method for drift identification and variable selection

Zakaria Babutsidze<sup>1,2</sup> · Marco Guerzoni<sup>3,4</sup>  · Luigi Riso<sup>5</sup>

© The Author(s) 2024

**Correction: Eurasian Business Review (2024) 14:285–318**  
<https://doi.org/10.1007/s40821-024-00260-z>

In this article the wrong figure appeared as Fig. 3b.; the figure should have appeared as shown below.

---

The original article can be found online at <https://doi.org/10.1007/s40821-024-00260-z>.

✉ Marco Guerzoni  
marco.guerzoni@unimib.it

<sup>1</sup> SKEMA Business School, Université Côte d’Azur (GREDEG), Valbonne, France

<sup>2</sup> OFCE, Sciences Po, Paris, France

<sup>3</sup> DEMS-University of Milan-Bicocca, Piazza dell’Ateneo Nuovo 1, 20126 Milan, Italy

<sup>4</sup> BETA, University of Strasbourg, Strasbourg, France

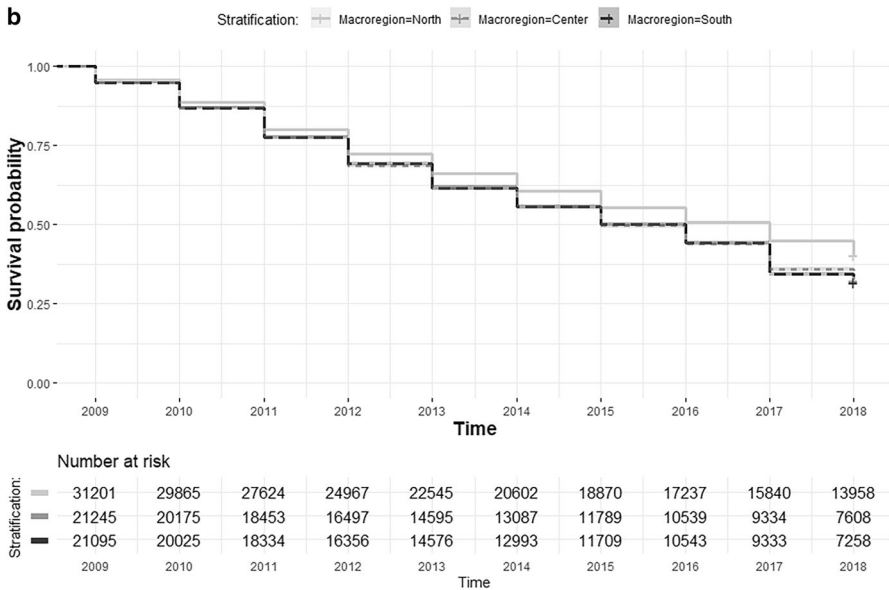
<sup>5</sup> Università Cattolica del Sacro Cuore, Milan, Italy

The incorrect Figure 3 b

a



The correct Figure 3 b.



The original article has been corrected.

**Open Access** This article is licensed under a Creative Commons Attribution 4.0 International License, which permits use, sharing, adaptation, distribution and reproduction in any medium or format, as long as you give appropriate credit to the original author(s) and the source, provide a link to the Creative Commons licence, and indicate if changes were made. The images or other third party material in this article are included in the article's Creative Commons licence, unless indicated otherwise in a credit line to the material. If material is not included in the article's Creative Commons licence and your intended use is not permitted by statutory regulation or exceeds the permitted use, you will need to obtain permission directly from the copyright holder. To view a copy of this licence, visit <http://creativecommons.org/licenses/by/4.0/>.

**Publisher's Note** Springer Nature remains neutral with regard to jurisdictional claims in published maps and institutional affiliations.